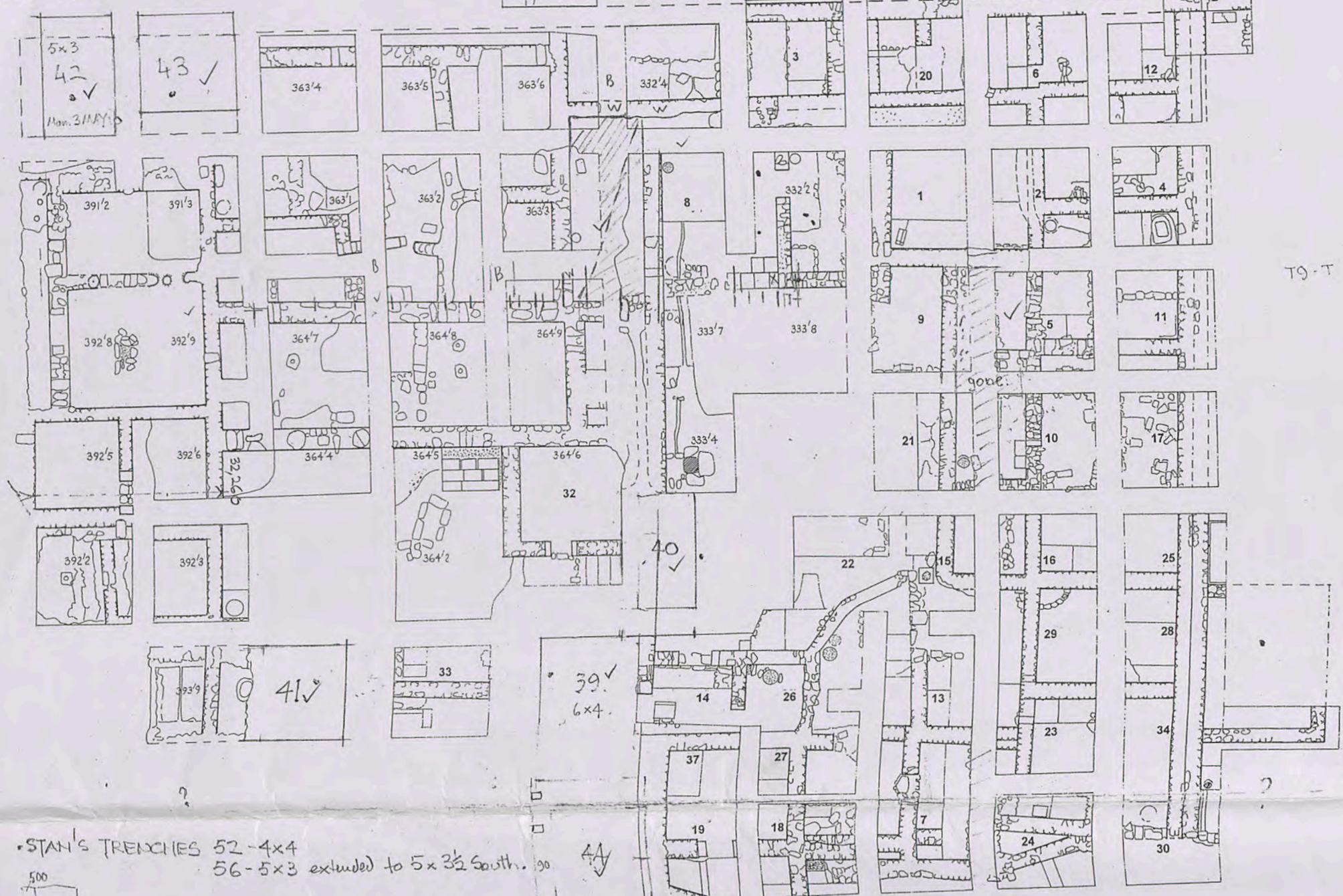
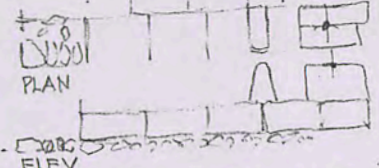
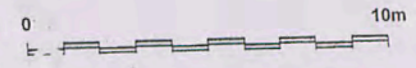
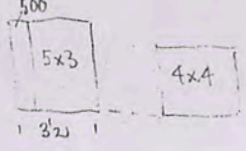


BAULK REMOVAL

30500
1760
0.2250



• STAN'S TRENCHES 52-4x4
56-5x3 extended to 5x3 1/2 South.



JEBEL KHALID 2008
AREA S

CHECK :

• GENERAL SIZE & POSITIONS OF ALL TRENCHES - >

A 5.20 N/S 5.80
B 3.50
3.8



36 moushous
East W face in bulk
with a half N-S bulk.

← Baulks in line

BR's drawings
Area S
2010