

T-61
1996
E. Clarke



A4 NOTE BOOK

No. 595

missing
• Sealing 19/5 p. 35
• 15/21
• *Coil*
• Stamped handle p. 27

JK 96 Akropolis Edward Clarke
T61 15/1996 → 10/1096.



A short note on terms used:

Locus: Area of the trench indicated by a roman numeral eg. Locus II. This is an aerial view, bounded N,S,E,W. or by walls etc.

Context: A change of context is indicated by a number, eg. Context 2. This is used to describe a texture or soil colour change vertically within the Locus.

Spit: The distance dug in a horizontal excavation is called a spit. Usually 5cm but sometimes greater. Indicated by number, Eg. Spit 4.

For example: Locus I, Context 1, Spit 1, is the beginning of the excavation, followed by Locus I, Context 1, Spit 2. If there were then a soil change then the new spit would be Locus I, Context 2, Spit 1! If the Locus is then interrupted by a boundary such as a wall then the larger one retains the old Locus number and the new area becomes a new Locus, Locus II, Context 2, Spit 1, etc. (The Locus changes, the spit number restarts, but the context stays as this is just a vertical indication of depositional layers.

Workers

Mith-he Methei

Yahiyeh

Mitchei

Hadijeh Yahiyeh

Salem Yahiyeh

Amouna Achmed

Hammed: Achmed

Sabkeh

Kramer

Ali Yahiyeh

Mahmoud Mohammed

Kahid Omar

Achmed Yahiyeh

Hadijeh Mahmoud

Hadith Mahmoud

Naimah (from police)

Abad. (the ultra-substitute)

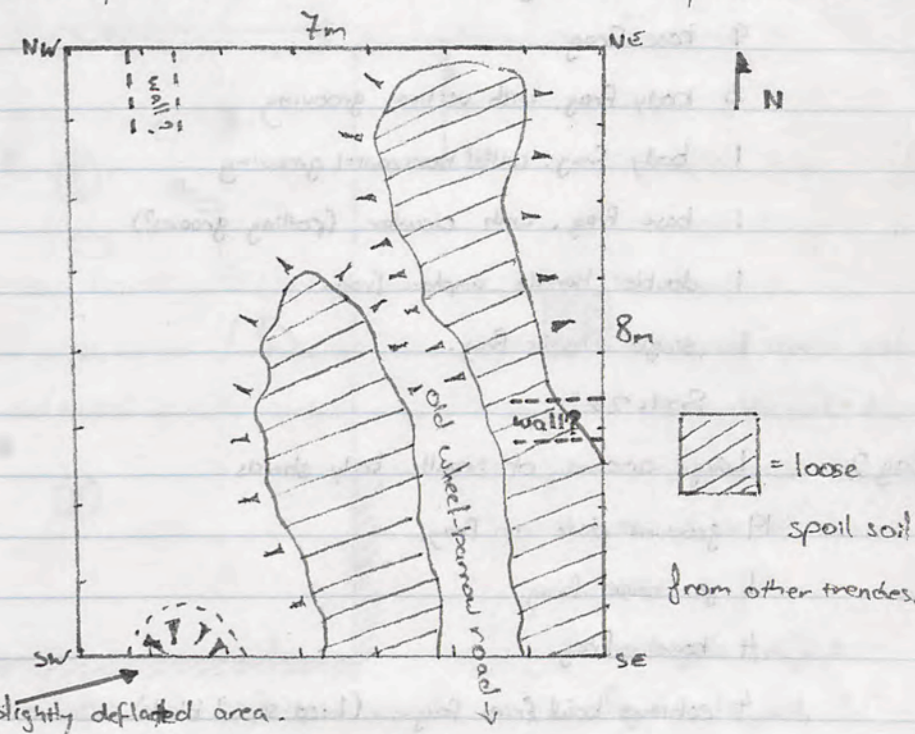
JK'96 TGI

Sunday 15/9

Removed Spoil Rocks which had been discarded from nearby Akropolis trenches. Very Bloody Windy. Worst Day Ever?

Monday 16/9

Removing spoil from surface. The South Eastern parts of the trench are covered with soil from the wheel-barrow road, and this will unfortunately render the surface collection essentially useless.



The highest corner is the NW with a gentle slope to the south and a steeper incline to the east for the whole trench.

• Consulted with GWC, and it was decided not to conduct a surface collection with locus I context 1 being designed, the original Jebel top-soil surface.

• Judging from the previously excavated trenches to the north and east, it is likely that we will encounter a N/S wall near the NW corner and an EW wall from the SE corner.

(8 o'clock and a very strong breeze has picked up again from the west covering the other trenches with dust. Trust the Greeks to build in such a windy place!)

• Soil deposit above old grass level is up to 60cm deep, with mostly sterile deposit. A few concourse body sherds (not collected).

Note: All shreds are medium-wear unless otherwise specified !!!

Wednesday 18/9. Spit ①

Bag 1. Large amount of small coarseware body sherds including some cooking ware

- 4 fine bowl rim frag.
- 11 echinus bowl rim frag. (2 very coarse, 3 fine with red glaze).
- 23 grooved plate rim frag.
- 3 grooved jar rim frag.
- 1 mortarium rim frag.
- 2 jar base frag.
- 9 base frag.
- 3 body frag. with vertical grooving
- 1 body frag. with horizontal grooving
- 1 base frag. with circular (potting grooves?)
- 1 double handle amphora frag.
- 1 single handle frag.

Spits 2 & 3

Bag 2. Large amount of small body sherds

- 19 grooved plate rim frag.
- 1 jar base frag.
- 4 base frag.
- 4 echinus bowl rim frag. (1 red slip, 1 black).
- 2 grooved jar rim frag.
- 2 bowl rim frag.
- 3 fine bowl rim frag. (1 coarser than the others).
- 1 out-turned bowl rim frag.
- 2 mortarium bowl rim frag.
- 5 amphora handle frag.
- 1 fish-plate base frag.

JK'96 T61 17/9

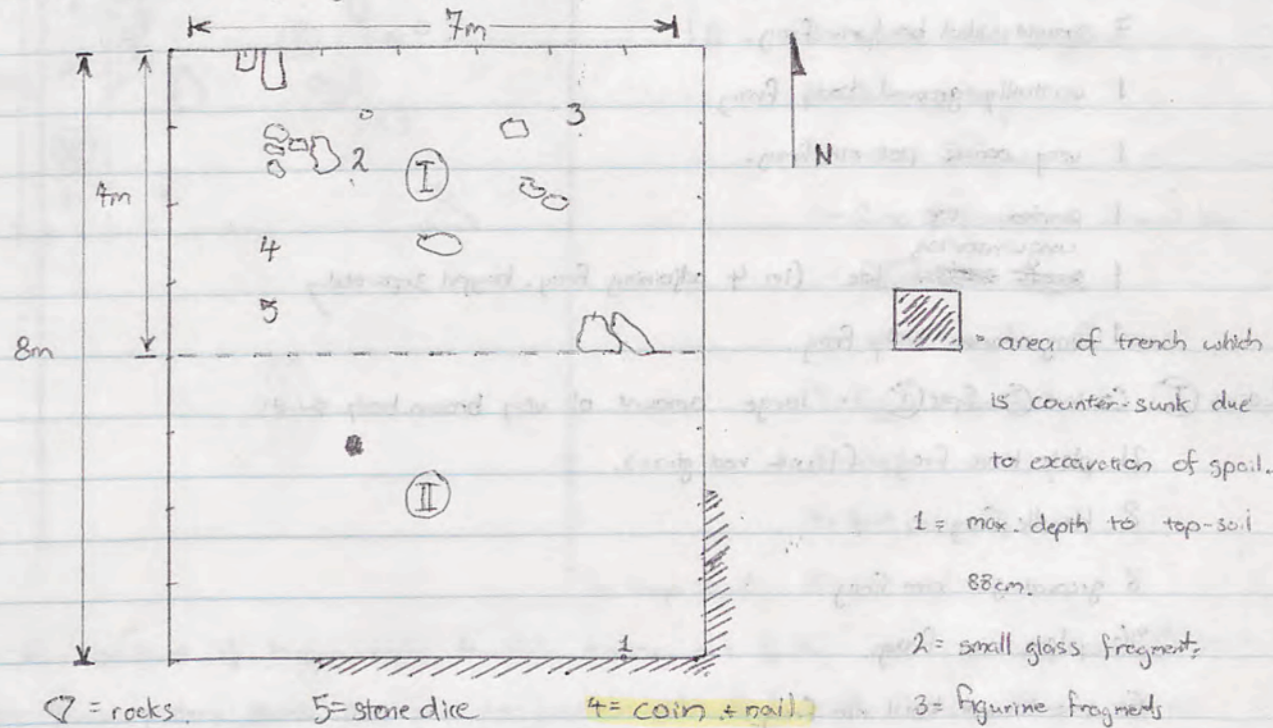
Tuesday.

Continued clearing loose spoil. Nearly 1 metre deep, at SE corner! Ended up using pick & shovel for removing the bulk of this. This took all day. (88cm)

Wednesday

JK'96 T61 18/9

Beginning excavation. Divided trench in half (east-west) for ease of discerning context change, and also as it is so large. Locus ① is in the north, Locus ② is in the south. Beginning with approximately 5 cm spits. Context ①.



- A few ~~shards~~ shreds (fairly coarse, domestic?) being uncovered, as well as some glass, bone and very small charcoal fragments, in no specific areas. (spit ①)
- figurine fragments found in northeast area of Locus ① just below top-soil, spit ②.
- wall in north-eastern corner becoming apparent in spit ③, as well as a large amount of pottery coming from east of the wall. (2 bags, large).
- small coin and a nail fragment found along the wall of spit ③. = int. 96.141 OS
- stone dice found in spit ③ near south west corner of Locus ①

Locus III spt ①, Bag ① - very large amount of small → medium body sherds.

13 base frag. (1 fish-plate, 1 fine ware red glaze, 2 coarse red glaze adjoining).

16 grooved plate rim frag.

54 handle frag.

7 ~~deep~~ grooved jar rim frag.

5 out-turned bowl rim frag.

1 mortarium bowl rim frag.

7 echinus bowl rim frag.

7 straight-sided bowl rim frag.

1 vertically grooved body frag.

1 very coarse pot rim frag.

1 amphora toe

1 ~~amphora~~ ~~toe~~ toe (in 4 adjoining frags. bagged separately)

1 unguitarian body frag.

Locus I Context ② Spit ① - large amount of very broken body sherds.

21 plate base frag. (1 with red glaze).

8 handle frag.

8 grooved jar rim frag.

36 plate rim frag.

6 out-turned bowl rim frag.

7 echinus bowl rim frag.

2 vertically grooved body frag.

3 horizontally grooved body frag. (1 with red glaze) (one with white slip).

2 very coarse bowl rim frag.

5 straight sided bowl rim frag.

1 painted plate body frag. (leaf design?).

Locus III, Context ②, Spit ② - Large amount of fairly broken body sherds, some cooking ware

9 plate rim frag.

3 grooved jar rim frag.

4 echinus bowl rim frag. (2 red slip).

3 out-turned bowl rim frag.

1 triple handle frag.

2 shallow bowl rim frag. red glaze

1 double handle frag.

1 unguitarian shoulder frag.

1 bowl base frag.

2 horizontally grooved body frag. (1 very coarse)

1 plate base frag.

2 v. fine red glaze body frag.

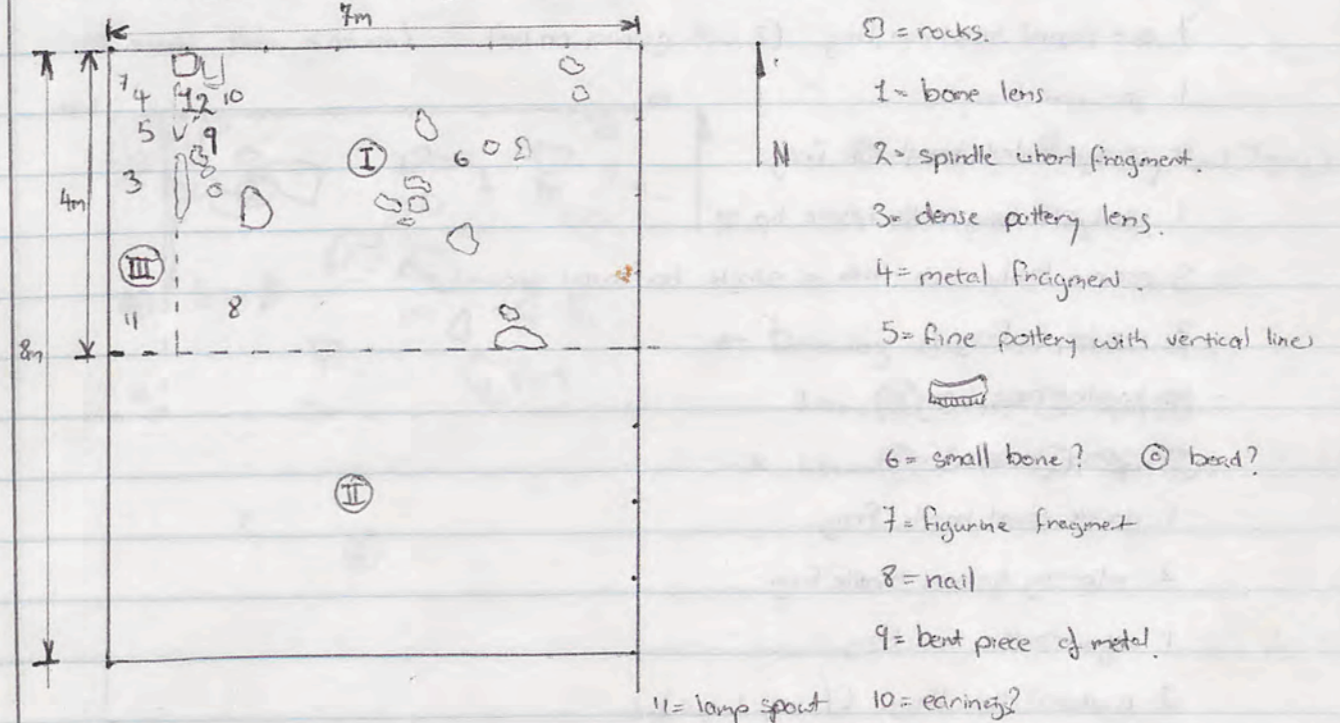
1 plate base frag. (circular grooves)

Thursday

Continued digging spit ③ of Locus I. A lens of a large amount of pottery and an increasing amount of bone is becoming apparent. Change of context to context ② spit ①.

A few roof tile fragments also were uncovered in the north-west corner of Locus I.

The north-south wall becoming more clear from the north-west corner.



A fair amount of broken rocks (trumble) coming out of the central part of Locus I, but far fewer pottery sherds than on the western side of the wall. Perhaps the west side has been used as a dumping area?

Some small red and yellow plaster fragments coming up from the central part of Locus I, context ②, spit ①.

The soil on western side of the N/S wall has a much grayer tone in is less friable. Decided to call this area Locus III.

Figurine fragment, Locus II, Context ②, Spit ①.

Nail, Locus III, Context ②, Spit ①.

Bent piece of metal, flattened at one end found above wall, Locus II, Context ②, spit ①, as well as 2 earrings? next to it.

Lamp spout, found in Locus III, Context ②, spit ②.

3 large bags of pottery, ① from east side I, ② from west side III

Locus ①, Context ①, Spit ④. ^{Bag 1.} large amount of body sherds, a couple of both pithoi + cooking.

16 ~~ring~~ ring base fragments.

29 ~~grooved~~ grooved plate rim frag.

9 ~~echinus~~ echinus bowl rim frag.

7 ~~grooved~~ grooved jar rim frag.

1 mortarium rim frag.

7 out-turned bowl rim frag. (2 with grooves on lip).

1 jar rim frag.

4 straight sided bowl rim frag.

1 bowl rim frag. with inside lip.

3 coarse body sherds with a single horizontal groove.

3 rim handle frag.

4 handle base frag.

4 strap handle frag.

1 double round handle frag.

2 adjoining grooved handle frag.

1 unguitarian toe frag.

2 amphora toe frag. (1 very large).

1 shallow sided bowl base.

1 body frag. tapering in fabric size (perhaps from the neck).

Locus ①, Context ①, Spit 4 Bag 2. small amount of medium body sherds.

3 grooved jar rim frag.

10 grooved plate rim frag.

8 ring base frag.

2 strap handle frag.

1 handle base frag.

2 echinus bowl rim frag.

1 out-turned bowl rim frag.

1 plate rim frag. grooved with black paint.

1 straight sided bowl rim frag.

Locus ③, Context ②, Spit ②. small amount of medium body sherds.

2 double grooved jar rim frag.

1 straight sided bowl rim frag.

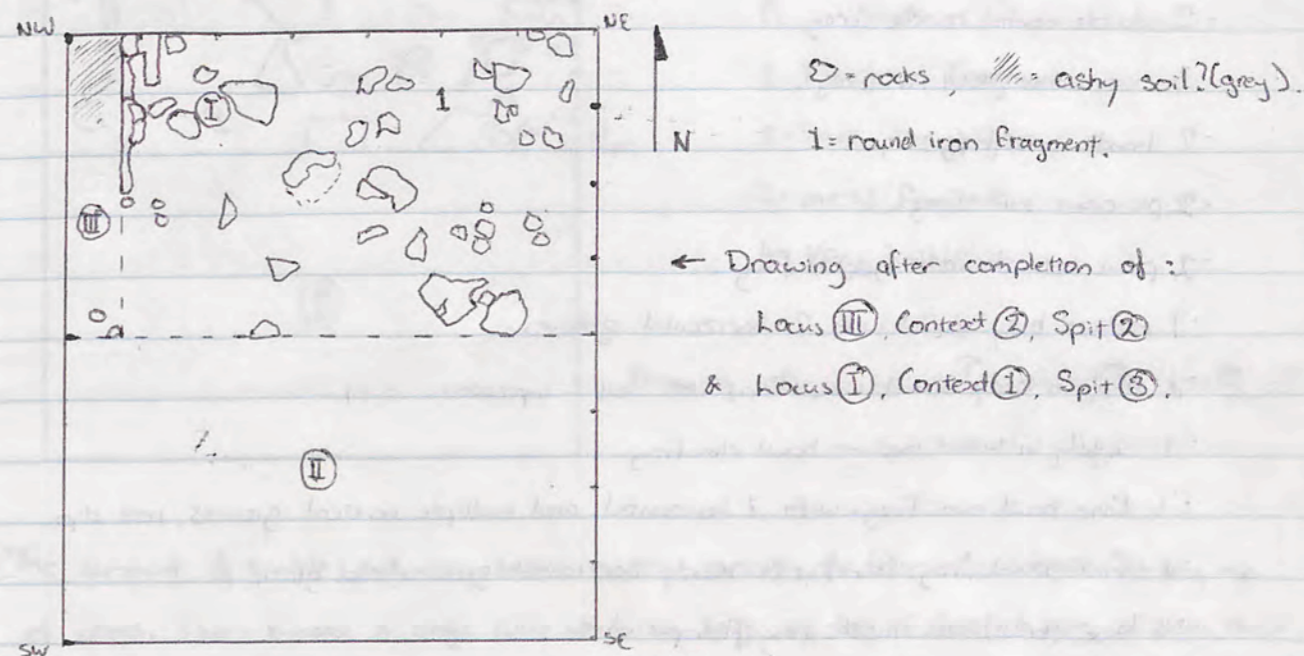
4 groove plate rim frag.

1 body frag. with 2 horizontal grooves.

2 ring-base frag. (1 complete base).

Saturday.

- Were joined by Naimah, a worker courtesy of the intelligence police today, what luck!
 - Continued finishing Locus ③, Context ②, Spit ②, revealing small amounts of bone and some pottery.
 - Began Locus ①, Context ①, Spit ④, from east side, working west.
- (had a small rain-shower this morning which although normally would reduce the dust, there is a stiff breeze from 6.00 am).



- Finished Locus ③, Context ②, Spit ②, Approximately 40 cm deep from NW corner, with the end of Locus ①, Context ①, Spit ④, at the same horizontal level.
- Quite a lot of tumble being uncovered in Locus ①, Context ①, Spit ④, along with some pottery, and a couple of roof tile fragments.
- At the bottom of Spit ④ a fairly large amount of pottery is coming through, provided this appears to be homogenous, then this will mark the beginning of context ② for Locus ①.
- Stopped due to rain ≈ 10.30 am.
- 2 bags of pottery.
- Iron fragment found in the North-east area of Locus ①, Context ①, Spit ④.

22/9 TGI Akrop Bag 1/1

Locus ①, Context ②, Spit ①. Large amount of medium ware very broken body sherds

17 ~~18~~ plate rim frag. - 1 straight sided bowl rim frag. grooved with black interior

10 grooved jar rim frag.

5 mortarium rim frag.

3 echinus bowl rim frag.

24 ring base frag.

4 strap handle frag.

2 double round handle frag.

3 out-turned bowl rim frag.

2 handle-base frag.

2 pie-crust rim frag.

2 pie-crust, shoulder (jar?) frag.

1 medium body sherd with 2 horizontal grooves.

1 medium body sherd with horizontal leaf? impression.

1 slightly in-turned medium bowl rim frag.

1 fine bowl rim frag. with 1 horizontal and multiple vertical grooves, red slip.

1 fine bowl frag. (rim) with inside horizontal grooves, red glaze.

1 base, (bowl) with inside ring (fish-plate)

1 stopper frag.

Locus ①, Context ①, Spit ④. fairly large amount of broken body sherds (260)

21 ~~20~~ plate rim frag.

1 tiered (3) base large.

3 grooved jar rim frag.

1 body frag. with 2 vertical grooves

3 mortarium rim frag.

21 ring base frag.

2 out-turned bowl rim frag.

5 strap handle frag. (1 from base).

1/2 of a double handle frag.

1 unguitarian rim frag.

1 unguitarian toe frag.

1 straight-sided bowl rim frag.

1 jar rim frag. (no groove).

1 large echinus bowl rim frag.

1 pithos rim frag.

1 body sherd (medium) with 2 vertical grooves

P.T.O. for 3rd Bag.

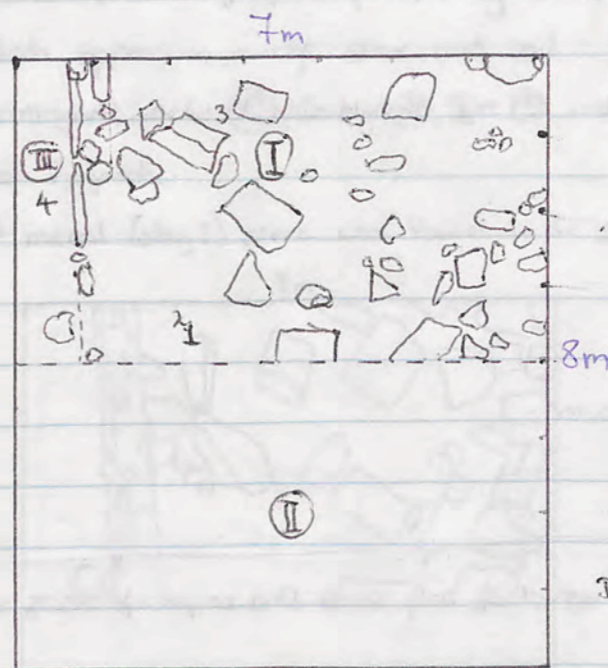
SALEM

سليم
أبي
عبد

JK96 TGI EC 22/9 9

Sunday.

Continued Locus ①, Context ①, Spit ④, with lots of very broken pottery and some bone becoming visible at the bottom end of the spit.



- N --- = Boundaries of Loci
- = Rock
- 1 = Flat Iron Fragment
- 2 = Small piece of glass
- 3 = metal Fragment
- 4 = large nail

Drawing after: Locus ①, Context ①, Spit ④.

The amount of tumble and very broken pottery, especially the latter may indicate dumping, esp. of plates. (Let's suppose a single event where the boys eat lots of food with bones on plates, throw the remains on the ground then pulled the walls down? Ho, ho, ho!).

Began Locus ① Context ②, Spit ①, and Locus ③, Context ② Spit ③, with Locus ① revealing very large worked stone along with some broken tumble, and Locus ③ becoming more granular with a lower pottery yield than Spit ②.

A few roof tile fragments and pithos frag. emerging from Locus ③, Context ②, Spit ③.

The pottery in Locus ③, overlies the more granular soil, with a possible, but extremely degraded floor level approx. 50cm down from NW corner

Small glass fragment found in Locus ①, Context ②, Spit ①, as well as a metal fragment (copper?)

Large nail found Locus ③, Context ②, Spit ③.

3 bags of pottery.

22/9 (Note: Previous Day!) TGI JK'96

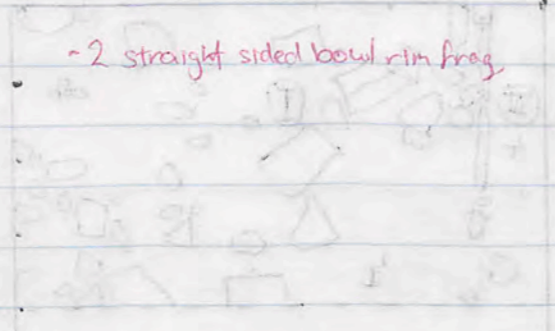
Locus III Context 2 Spit 3

- medium/large amount of body sherds with some cooking ware.
- 5 ring base frag.

~~13/14~~ Echinus bowl rim frag. (2 adjoining with red paint fairly fine).

- 2 adjoining straight-sided bowl rim frag.
- 3 shallow bowl rims (mortarium style).
- 2 grooved jar rim frag.
- 2 out-turned jar rim frag.
- 1 amphora handle (from base).
- 1 strap handle base.
- 1 body frag. (medium) black inner, red outer.
- 1 body frag. red paint (medium wave).
- 1 coarse jar rim frag.

- 2 straight sided bowl rim frag.



23/9 Locus III Context 2 Spit 3 medium amount of body sherds, + a couple of cooking-ware

- 5 echinus bowl rim frag.
- 2 jar rim frag. with outer lip.
- 5 ring base frags.
- 1 mortarium bowl rim frag.
- 1 pithos rim frag.
- 1 body frag. with 2 horizontal grooves, brown exterior.

Locus I Context 2 Spit 2 Bag 1 Large amount of body sherds.

- 17 ring base frag.
- 14 plate rim frag.
- 2 mortarium bowl rim frag.
- 2 echinus bowl rim frag.
- 3 straight-sided bowl rim frag.
- 1 bowl rim frag. with double grooved top lip.
- 2 strap handle frag.
- 1/2 a double handle frag.
- top of jar handle, grooved lip.
- 1 handle base frag.
- 1 grooved jar rim frag.
- 1 out-turned jar rim frag.

P.T.O. for Bag 2.

JK'96 TGI E.C

23/9

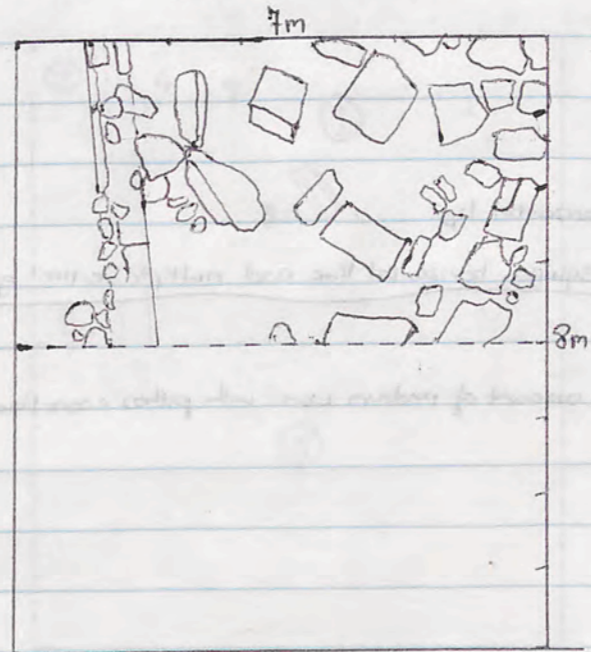
Monday

- Began Locus I, Context 2, Spit 2.

• A large amount of pottery and some large bone fragments emerging, along with good definition of the N.S. running wall. Also defining the large worked stones which appear to overlie stone and soil.

• Continued Locus III, Context 2, Spit 3, revealing a medium amount of pottery, and a few bone fragments.

• A metal (slag?) piece was found in the southern part of Locus I, Context 2, Spit 2.



• 3 bags of pottery.

- figurine fragment from Locus III, found in pottery.

Note: Belongs to Previous Day! 23/9

Locus I Context 2 Spit 2 Bag 2 - Large amount of body sherds with some body sherds

- 15 ring base frag. (1 red glaze).
- 16 plate rim frag. (1 burnt).
- 4 echinus bowl rim frag.
- 6 grooved jar rim frag.
- 3 amphora toes (1 pitched interior).
- 2 round base frag.
- 1 handle base frag.
- 2 out-turned jar rim frag.
- 1 straight sided bowl rim frag.
- 1 body sherd from small round vessel.
- 1 body sherd from bowl with interior horizontal lip.
- 1 coarse body sherd, with handle base, squiggly horizontal line and multiple vertical grooves.

24/9

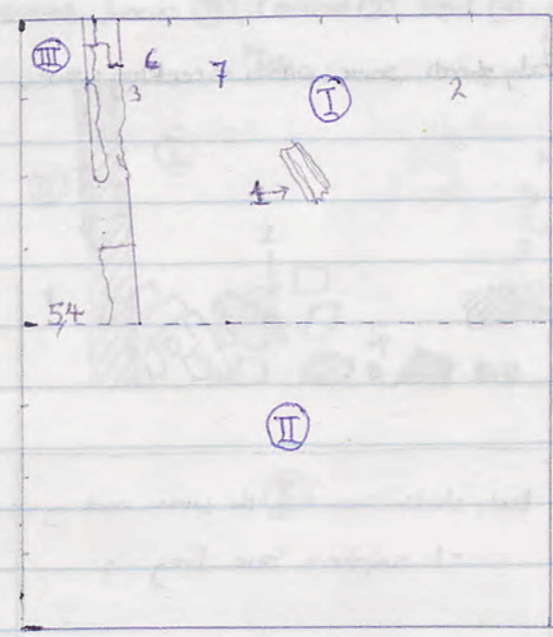
Locus I Context 2 Spit 2 Bag 1 - Large amount of medium ware with pithos + some fine ware body sherds.

- 9 ring base frag.
- 25 grooved plate rim frag.
- 11 grooved jar rim frag.
- 1 mortarium rim frag.
- 1 amphora toe frag.
- 2 strap handle frag.
- 3 straight-sided bowl rim frag. (1 with red slip).
- 1 handle frag. from a large amphora.
- 1 double handle base frag.
- 2 out-turned jar rim frag.
- 2 bowl rim frag, outer lip, ~~red slip~~. (1 with red slip).
- 2 jar rim frag. with outer lip.
- 1 fine body sherd: with vertical grooves, red glaze.
- 1 body sherd, with concentric circular grooves and vertical grooves, red slip outer.
- 1 fine body frag. with fern design, red glaze.

P.T.O. for next Bags

Tuesday

- Continued Locus I Context 2, Spit 2, by rolling some of the very large worked stones either out of the trench into the northern previously excavated square or relocating them onto already excavated portions of the Spit. (largest 130x124x57cm)
- Still a fairly high broken pottery yield, indicating a continuation of the pottery bus, as well as bone.
- A moulded corner stone, (capitol) found among the large worked stones of locus I.
- Some very large bone pieces found in Locus III Context 2, Spit 4.



- 1 = moulded stone
- 2 = iron blob
- 3 = basalt piece with hole
- 4 = large bone frag.
- 5 = small glass frag.
- 6 = bronze fragment
- 7 = bronze ring? frag.

- Iron blob found in Locus I, as well as what could be a basalt weight; and some bronze frags. and some burnt bone.
- 3 bags of pottery.

Note: Pottery carry over from previous day!

Locus ①, Context ②, Spit ②, Bag 2. Small amount of fairly broken body frag.

- 3 ring base frag.
- 5 grooved plate rim frag.
- 1 round base frag.
- 1 shallow bowl rim frag, black (pitch?) interior.
- 3 grooved jar rim frag.
- 2 mortarium rim frag.
- 2 strap handle frag.
- 1 straight sided bowl rim frag.

Locus ③ Context ② Spit ④. Small amount of body sherds, some pithos & cooking ware.

- 2 mortarium rim frag.
- 1 grooved jar rim frag.
- 1 grooved plate rim frag.
- 3 ring base frag.
- 3 straight-sided bowl rim frag.
- 1 small vessel shoulder frag.

25/9 Locus ① Context ② Spit ②. Medium large body sherd amount with some cooking ware

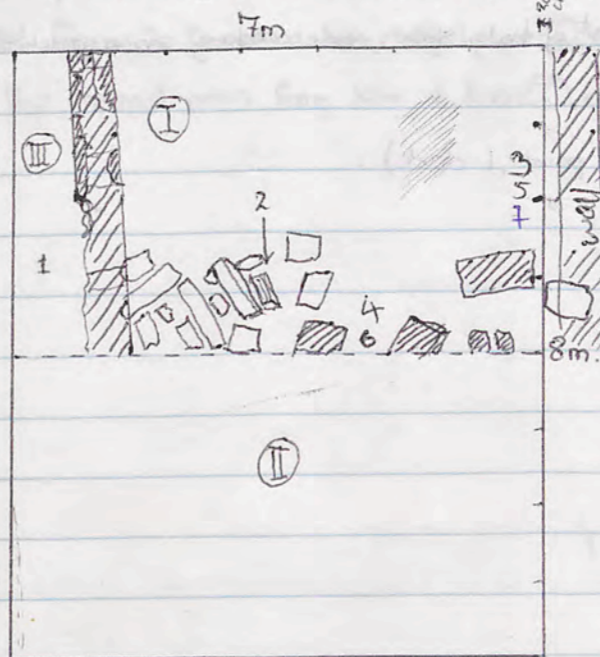
- 7 ring base frag
- 4 grooved jar rim frag.
- 7 grooved plate rim frag.
- 2 echinus bowl rim frag.
- 2 full strap handle frag.
- 3 strap handle frag.
- 1 strap handle frag base.
- 1 triple handle base frag.
- 1 unguitarium ~~toe~~ frag.
- 5 out-turned bowl rim frag.
- 2 out-turned jar-rim frag.
- 1 shallow bowl rim frag. (tinned rim).
- 1 unknown (very small) jar-rim frag.
- 2 body sherd with horizontal squiggly lines.
- 1 interned bowl rim frag.
- 1 body frag. with parallel horizontal grooves

- 1 amphora toe frag.

PTO for other 2 bags

Wednesday.

- One more day to Haleb.
- Continued on Locus ①, Context ②, Spit ②, by rolling some of the very large worked stones into the previously excavated trench to the north. This spit is substantially deeper than the other ones due to the depth of the stones. The large pick was used to leave some of the biggest and some scratching of the surfaces occurred. Far fewer pottery sherds and bones are coming up between the tumble.
- About 10cm of soil deposit has been left to overlie the anticipated floor.
- Continued Locus ③, Context ②, Spit ④. (Approx. 10cm Spit).



- very broken rubble
- 1 = pottery with squiggle.
- rocks ~~in situ~~ in-situ.
- ○ = rocks which have been moved.
- 2 = cornice stone (also has been moved).
- 3 = lots of pottery (possibly two pots).
- 4 = coin = inv. 96.127 [US]
- 5 = metal fragments 7 = lampfrag.
- 6 = charcoal fragments.

↑ supposed to be straight!

- The second tier of stones of the north-south running wall has been badly eroded and has totally disappeared in the southern half of the wall, leaving just the very large stones of the bottom layer.
- This so we can move the large stones around without damaging the clay floor.
- A very broken rubble region in the eastern part of the trench (Locus I), possibly indicating fill of some sort, but there's no apparent overlying floor!
- Pottery sherd with grooved squiggle found in Locus ③.
- There's a problem with the eastern side of the trench where ~~at~~ ^{number of} centimetres outside the trench there is a wall and the soil does not adhere to the wall well enough and crumbles into the square, so the dimensions are not quite accurate now, up to 40?cm at the southern point of the trench, and ^{up to} 20cm in the northern area. (Lessim ~~than~~ ^{than} jara, buchara, inshallah!).

25/9

Locus (I) Context (2) Spit (2). Pottery mostly from ~~these~~ pots, with some pitched interior ware and some pithes.

- Large amount of body sherds.
- 2 full strap handle.
- 2 ring base frags.
- 2 grooved jar rim frag.
- 1 jar rim frag.
- 1 fine echinus bowl rim with red paint.
- 1 grooved bowl rim frag.

Locus (III) Context (2) Spit (4). Medium amount of body sherds, some ~~clay~~ clay, some pitched and some with red paint.

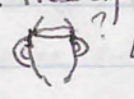
- 5 echinus bowl frag. (4 with red paint, 1 dark).
- 2 fish plate bases.
- 2 mortarium rim frag.
- 1 strap handle base frag.
- 2 out-turned bowl rim frag.
- 1 grooved jar rim frag.
- 1 fine ware black glaze body sherd.
- [?] 1 rim frag. (jar?)
- 1 mend-hole frag.

Continuation; Somehow bag was separated into two piles!! Bag 2.

538

- Medium amount of body sherds.
- 2 strap handles.
- 5 grooved jar rim frags.
- 1 ring base plate frag. red glaze.
- 3 ring base bowl frag.
- 3 plate rim frag. (1 black interior)
- 1 pie crust body frag.
- 1 straight sided bowl frag.
- 2 out-turned shallow bowl rim frag.
- 1 jar rim frag.
- 1 body frag. with parallel lines (horizontal)
- 1 body frag with vertical grooves.

Still Wednesday.

- A great deal of coarse-ware coming up from the eastern side, at the bottom end of Locus (I) Context (2) Spit (2). * Possibly indicating a floor level?
- * This is all from what appears to be one large vessel, bagged separately but has a few other sherds in the bag. (Possibly two vessels, as more come up shortly afterward)
- Could be amphora style.  4 handles in total, two of which are green, due to exposure? Or possibly caused by water running down the wall.
- Coin found on Locus (I) Context (2) Spit (2). Base, near south part of trench, very probably a floor level. (US: 96.127)
- Metal fragments found at base of Locus (I) Context (2) Spit (2), near wall
- A few charcoal pieces from base of Locus (I) Context (2) Spit (2) at south central bank.

A. ABRAHIM

IBRAHIM

ED GRAEME

Locus I Context 2 Spit 2. Large amount of body sherds, some cooking + pithos (338).

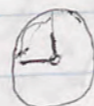
- 1 jar handle.
- 4 jar handle base frag. (1 with black (burnt) outside).
- 1 fine very long ring base plate frag. red glaze.
- 9 ring base plate frag. (1 with red glaze).
- 4 mortarium rim frag.
- 1 amphora toe frag.
- 3 grooved jar rim frag.
- 1 grooved plate rim frag.
- 1 strap handle frag.
- 2 body frag. with squiggly grooves.
- 2 body frag. with parallel grooves.
- 1 body frag. with vertical grooves.
- 1 jar rim frag with out-turned lip and tiered exterior.
- 1 coarse-ware body frag with grooves.
- 1 body sherd with hole in it.

Locus I Context 2 Spit 3 Beg 1.

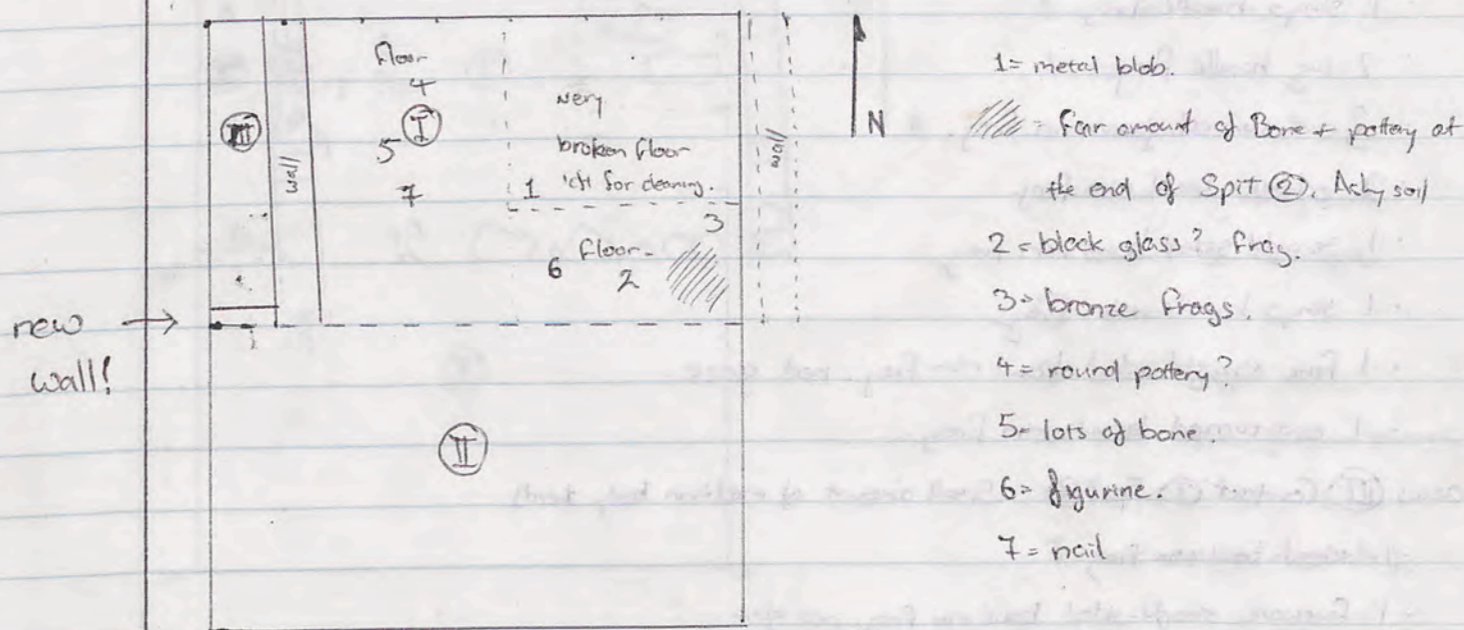
- Large amount of body sherds, some with pitched exterior. (212).
- 3 grooved plate rim frag.
- 6 mortarium rim frag.
- 6 grooved jar rim frag.
- 8 ring base frag.
- 3 fish plate frag. bases.
- 1 amphora toe.
- 2 echinus bowl rim frag.
- 3 strap handle frag. (2 burnt).
- 2 strap handle base frag.
- 2 out-turned jar rim frag.
- 1 shallow bowl rim frag (grooved).
- 3 fine shallow bowl rim frag. (red glaze).
- 1 straight sided bowl rim frag. with horizontal exterior grooves.
- 2 adjoining body sherds, fine red glaze. with circular speckling.
- 1 jar shoulder with vertical grooving.

PTO for Next 3 bags.

11:45



- Began Locus I Context 2 Spit 3. This, just overies what appear to be a very broken floor, in the central part of the trench. Finished off Spit 2 of this Locus.
- Small metal blob from Locus I.
- Continued Locus III, Context 2 Spit 4.
- Pottery and bone with a few roof tile fragments from both Loci.



- The broken floor has been lost in most sections of the Locus I and is possibly lost completely, shown only by ashy soil and a few clay sections. Have left the north-east corner section to be brushed off to try and minimise any further damage.
- Small piece of black glass? from base of Locus I, Spit 3, as well as some bronze frags.
- Small round piece of pottery, Locus I, Spit 3.
- Cleaner floor level (the 2nd) slightly lower than the one visible in the north east, fairly packed clay, rather than broken + stoney like the other, emerging in the east of Locus I + in the south.
- Quite a lot of bone lying on the floor level of Locus I, Context 2, Spit 3.
- A wall is apparently coming out in east Locus III; running east-west at south end.
- Figurine (Seal?) made of what appears to be stone. Very beautiful!! found on floor of Locus I = bitumen sealing, found at floor level.
- Nail fragment found on floor in Locus I, Context 2, Spit 3.
- Began Locus III, Context 2 Spit 5.
- 5 Bags of Pottery. 5 Bags of Bone.

Locus I Context 2 Spit 3 Beg 2

- Medium pile of body sherds.
- 14 ring base shards
- 15 grooved plate rim frag.
- 6 grooved jar rim frag. (1 with fine red glaze)
- 1 round base frag.
- 1 strap handle frag.
- 2 lug handle frag.
- 3 out-turned jar rim frag.
- 2 echinus bowl rim frag.
- 1 straight sided bowl rim frag.
- 1 strap handle rim frag.
- 1 fine straight sided bowl rim frag. red glaze
- 1 out-turned bowl rim frag.

Locus III Context 2 Spit 4 • Small amount of medium body sherds.

- 1 echinus bowl rim frag.
- 1 fineware straight-sided bowl rim frag. red glaze
- 2 grooved jar rim frag.
- 1 amphora toe.
- 1 ring base frag.
- 1 fine body sherd circular grooves + dotting. red glaze
- 1 body sherd with vertical grooves + red slip.

Locus III Context 2 Spit 5 • 7 body sherds.

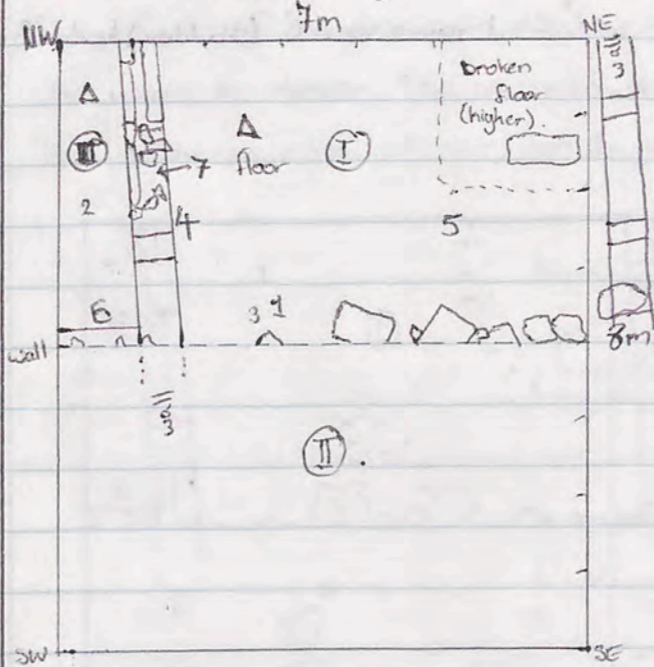
- 1 grooved jar rim frag.

28/9 Locus III Context 2 Spit 5 • Medium pile of body sherds, some with red paint, some pitched.

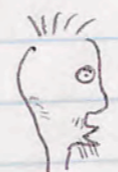
- 3 adjoining frag. one with handle base and red paint
- 3 echinus bowl rim frag. red paint
- 3 jar rim frag. (outer lip).
- 1 jar rim frag. (smaller lip).
- 1 out-turned jar rim frag.
- 1 ring base frag.

Saturday

- Continued Locus I, Context 2, Spit 3, and Locus III, Context 2, Spit 5.
- Locus I is very powdery, and is over the lower floor level of the locus, yielding some pottery and bone.
- Locus III becomes very broken rubble with a little pottery. End of Spit signifies change of context!



- Small polished stone, which could be agate or just river rock, out of Locus I.
- Small amount of charcoal from Locus III
- Depth of bottom floor level from NW corner 1.53m. Locus I.
- Depth of spit 5 Locus III from NW corner, 1.07m, at this level more roof tile fragments and more pottery, possibly giving an event: i.e. collapse or further collapse of the building. It is likely that the material from this locus previously came from the secondary occupation.
- Piece of roof tile and lots of bones found on floor of Locus I. The tile may indicate a possible building collapse, very early on, possibly even immediately after the room was vacated. (or systematic robbing?)
- Pieces of worked bone found on floor of Locus I, (could be agate). Function: probe? Appearer?
- Finished Locus I, Context 2, Spit 3 and swept. The floor is broken in several areas, considering the size of the tumble that was on top, this is not surprising.
- Began Locus III, Context 2, Spit 4, with most of a jar coming up almost immediately, in pieces
- Coin found on floor of Locus I, after sweeping: Locus I, Context 2, Spit 3 28/9/96. ^{OK} _{✓ on this 96.11.17 (95)?} JS
- Net weight found on wall of Locus III. Deemed to be Context 2, Spit 3 (Basalt)



Salem

MISSING

Locus ①, Context ②, Spit ③. Large amount of body sherds, some pitthos, cooking ware and some pitched.

- 19 ring base frags. (1 with red glaze)
- 1 fish plate base
- 1 flat base frag.
- 2 round base frag.
- 26 plate rim frag. (grooved)
- 5 grooved shallow bowl rim frag.
- 2 strap handle frag.
- 1 double handle strap frag.
- 2 strap handle base frag.
- 4 grooved jar rim handles
- 2 mortarium rim frag.
- 1 amphora toe frag.
- 2 out-turned bowl rim frag.
- 1 straight sided bowl rim frag.
- 1 body frag. vertical groove
- 1 thick lipped jar rim frag.
- 1 B.O.F. body frag.
- 1 twisted handle (sintered)
- 1 thick amphora handle.
- 1 pitthos? rim.
- 1 body frag. horizontal groove
- 1 body frag. horizontal groove (red slip)
- 1 amphora rim, pitched interior
- 1 round vessel (shoulder) body frag.

Locus ③ Context ③ Spit ① pottery. 3 medium body sherds.

- 1 grooved plate rim frag.

Locus ③ Context ③ Spit ① Partial pot (removed) balance is 10 body sherds (2 cooking).

- 2 echinus bowl rim frag.
- 1 body frag. with horizontal grooving

29/9 Locus ③ Context ③ Spit ②. Small amount of body sherds.

- 1 grooved jar rim frag.
- 1 bowl rim frag.
- 1 out-turned bowl rim frag.

Locus ② Context ① Spit ①. Very large amount of body sherds.

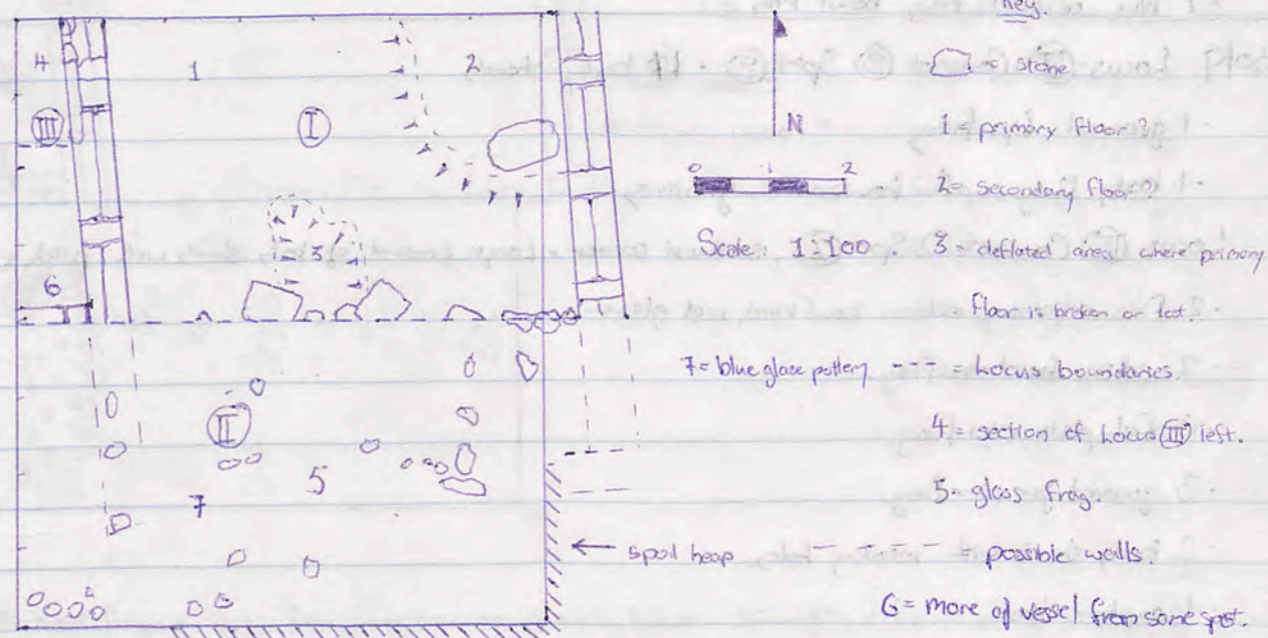
- 5 grooved jar rim frag.
- 15 grooved plate rim frag.

P.T.O.

Sunday: Very windy at 6 o'clock today.

- Continued Locus ③ Context ③ Spit ①, depth approx 7/10 cm.
- Opened Locus ②, Surface collection taken but nothing except for broken rocks were found.

This is not terribly surprising east considering that the soil removed from the above this was spoil from previously excavated trenches. It would have been desirable to have started Locus ② Context ① Spit ① from the western side, however the direction of the wind prevents any visibility when working this direction. * so we could essentially level the trench, west side is higher. So a shallow spit ≈ 3 cm will work from the eastern end.



- A few sherds coming up in Locus ③, but it is mostly rubble deposit. Decided to section the Locus E/W and not continue Context ③ Spit ① in the northern portion, and work only in the south.
- Quite a lot of pottery and bone is pressed into the floor level (1) of Locus ①.
- Glass fragment found in Locus ② Context ① Spit ①.
- The spit in Locus ② becomes slightly deeper as we head west, trying to keep a fairly level context, as the natural slope is down to the east. A fair amount of pottery coming up with the top soil.
- Began spit ②, of Locus ③, Context ③. Longer unworked strata coming up. It now seems unlikely that this area was occupied at this depth or really at all. Possibly just as a dump? or cooking area?
- There is a wall running east west from the east and it is anticipated that a corner or intersection will occur in this trench.
- Spit ② of Locus ③ revealed more of the same vessel as found in spit ①.
- A fragment of blue glaze? pottery found in Locus ②, Context ①, spit ①. Islamic?
- Glass bowl frag. found in pottery from Locus ②.

- 15 ring base frag.
- 3 mortarium rim frag. (1 very burnt).
- 7 echinus bowl rim frag.
- 6 out-turned bowl rim frag.
- 2 straight sided bowl rim frag.
- 1 handle frag.
- 1 strap handle base fragment.
- 2 amphora toe fragment.
- 1 blue ceramic frag. bowl rim.

30/9 Locus III Context 3 Spit 2. ~~1/2~~ body sherds

- 1 grooved lip frag.
- 1 body frag. with horizontal grooves.

Locus II Context 1 Spit 2, southwest corner - Large amount of body sherds with pitch, + cooking ware.

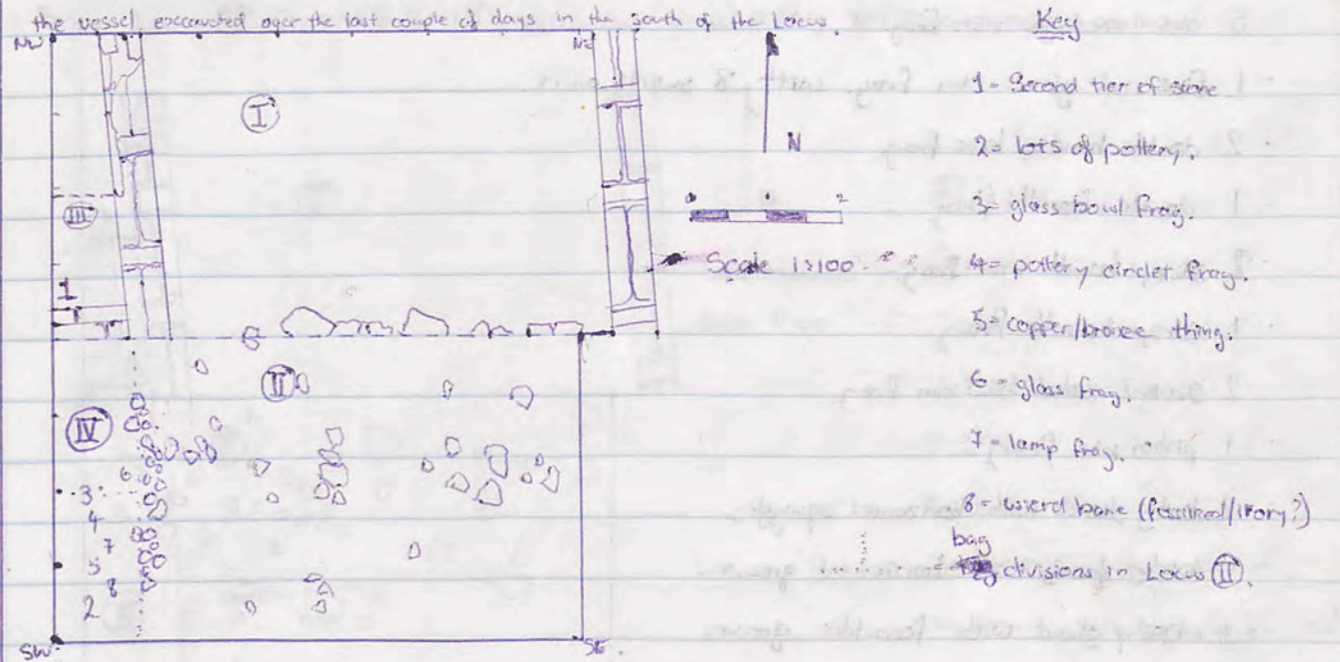
- 2 fine adjoining echinus bowl rims, red glaze.
- 2 echinus bowl rim frag.
- 6 fish plate rim frag.
- 3 grooved jar rim frag.
- 2 body sherds with mending holes.

- 1 amphora base.
- 1 whole strap handle.
- 3 ring base frag.
- 2 jar rim frag.
- 1 mortarium rim frag.
- 1 double handle frag.
- 1 handle base frag.
- 1 strap handle frag.

- 5 elaborate pie crust rims.
- 2 pie crust body sherd.
- 1 straight sided bowl rim frag.
- 1 jar? rim frag.
- 1 out-turned bowl rim frag.
- 1 body frag with horizontal grooves.

Monday.

- Began Locus II, Context 1, Spit 2 from western side working east. There are a number of rocks emerging which appear to be roughly in line with the anticipated north-south and east-west running walls, as well as a fair amount of pottery emerging, esp. in southwest corner.
- Continued Locus III, Context 3, Spit 2, and encountered another tier of stone in the north-south wall, but is out of kilter so is probably foundation stone! A couple of sheets sheets in this level, possibly from the vessel excavated after the last couple of days in the south of the Locus.



- Glass bowl frag. v. likely from same bowl as yesterday found in Locus II, as well as a fragment of a pottery bracelet?
- Important to note is the size of pottery fragments in the west of this trench. They in general are much larger, more prolific and higher up than in the north of the trench (Locus III + Locus I). (2 large bags)

- A fair amount of bone coming up in west part of Locus II as well as a glass fragment, and a lamp fragment.
- Some strange bone, which is very heavy and hard in Locus II. fossilized ivory?

→ One bag from the north-west corner, (east 1m and south 2m) and one bag from south-west corner (east 1m and south 2m).

- Finished Locus III, Context 3, Spit 2, and began Locus III, Context 4, Spit 3. Encountered 2nd tier of stones on N/S running wall. This layer appears to be sterile rubble!
- The soil in the western side of Locus II is much more clay than that of the east. Colling the ca. western 1m or so, Locus IV. A rubble looking wall? becoming apparent in the division.
- Some red + grey/black plaster fragments in east side of Locus II.
- 4 pottery bags in total.

30/10

Locus ② Context ① Spit ② NW corner. Large amount of body sherds, some cooking ware.

- 16 ring base frag (2 with red glaze).
- 11 grooved plate rim frag.
- 2 mortarium rim frag.
- 2 echinus bowl rim frag.
- 5 grooved jar rim frag.
- 5 out-turned jar rim frag.
- 1 fine red glaze rim frag. with 8 swirls on it.
- 2 double handle base frag.
- 1 double handle frag.
- 2 strap handle rim frag.
- 1 strap handle frag.
- 2 straight sided bowl rim frag.
- 1 pithos rim frag.
- 2 body sherds with horizontal squiggles.
- 1 body sherd with horizontal groove.
- 1 body sherd with fern-like grooves.
- 1 warped jar rim.

Locus ② Context ① Spit ② pottery east of wall. medium amount of body sherd + some cooking

- 1 strap handle frag.
- 4 mortarium rim frag.
- 5 grooved plate rim frag.
- 3 ring base frag.
- 1 echinus bowl rim (Black paint)
- 1 fine red glaze echinus bowl rim.
- 1 narrow vessel body frag.

1/10 Locus ④ Context ② Spit ① - Medium amount of body sherds, some pitched interior.

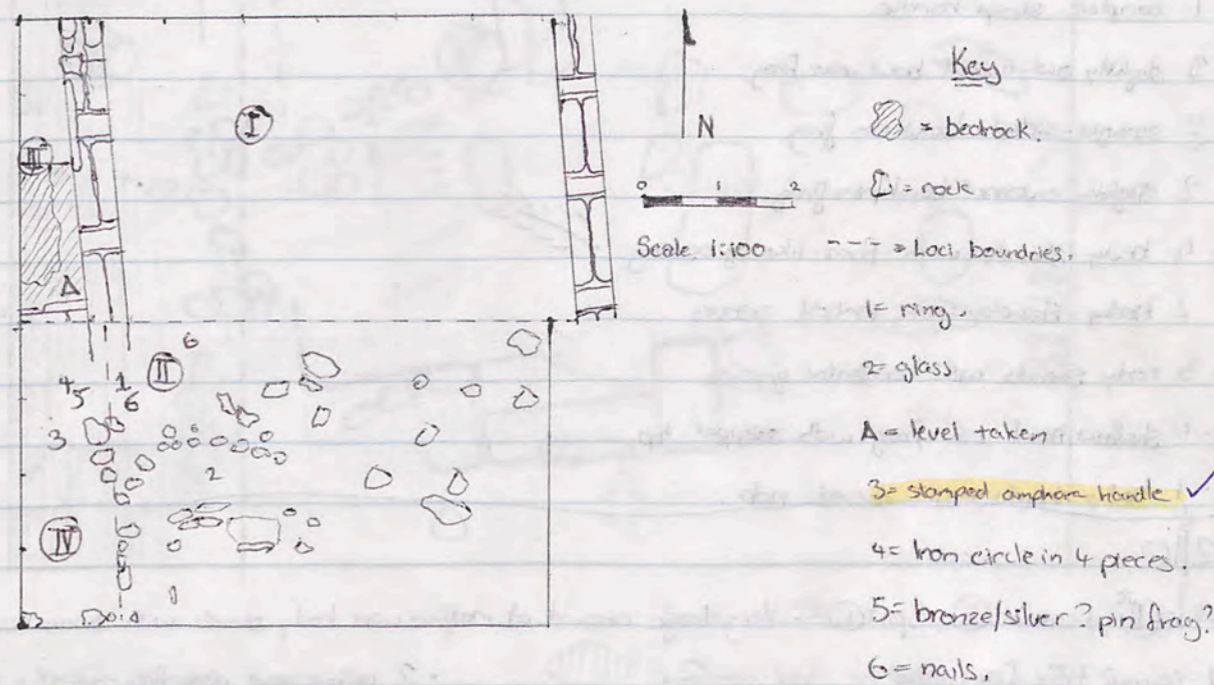
- 4 ring base frag.
- 2 mortarium rim frag.
- 2 fine red glaze ring base frag. (1 with 2 mending? holes).
- 3 grooved jar rim frag.
- 2 straight sided jar rim frag.
- 2 grooved plate rim frag.
- 2 adjoining body sherds with 6 holes in them.
- 1 out-turned bowl rim frag.
- 1 body sherd with horizontal grooving.

JK 96 TGI Akrop 1/10

27.

Tuesday. Began work at 5:00am this morning, as we reverted to normal time.

- Continued Locus ② Context ① Spit ②, yielding some pottery and gaining (perhaps) more definition of the east west running wall, the pottery is in very small broken pieces, and a few bone fragments.
- Continued Locus ③ Context ③ Spit ③, have encountered bedrock in the western and northern part of the Locus. There appears to be a narrow trench along the side of the north-south and east-west running walls. No pottery, just rubble fill.
- Began Locus ④ Context ② Spit ①, (approx 5cm deep), pottery and bone deposit in ash soil.



- Bedrock encountered in Locus ③. 2.09 m down from North west corner, Finished spit ③.
- Ring found in Locus ②, and a piece of glass.
- Stamped amphora handle from Locus ④ Context ② Spit ①. i.e. in dump area outside W wall?
- Iron circle in four fragments, and the back of a brooch? found in Locus ④.

1/10

Locus **II** Context **1** Spit **2** - Very large amount of very broken body sherds.

- 20 plate rim frag. grooved (1 very burnt).
- 8 grooved jar rim frag.
- 24 ring base frag.
- 1 montanum rim frag.
- 4 echinus bowl rim frag.
- 2 echinus bowl rim frag. fine red glaze
- 1 complete strap handle.
- 3 slightly out-turned bowl rim frag.
- 3 straight-sided bowl rim frag.
- 2 slightly inward bowl rim frag.
- 4 body sherds with fern-like grooving
- 2 body sherds with vertical grooves.
- 3 body sherds with horizontal grooves.
- 1 shallow bowl rim frag. with stepped lip.
- 1 body sherd with raised rib.

Ko. 2/10

Locus **II** Context **2** Spit **1** - Very large amount of medium ware body sherds with some necking ware.

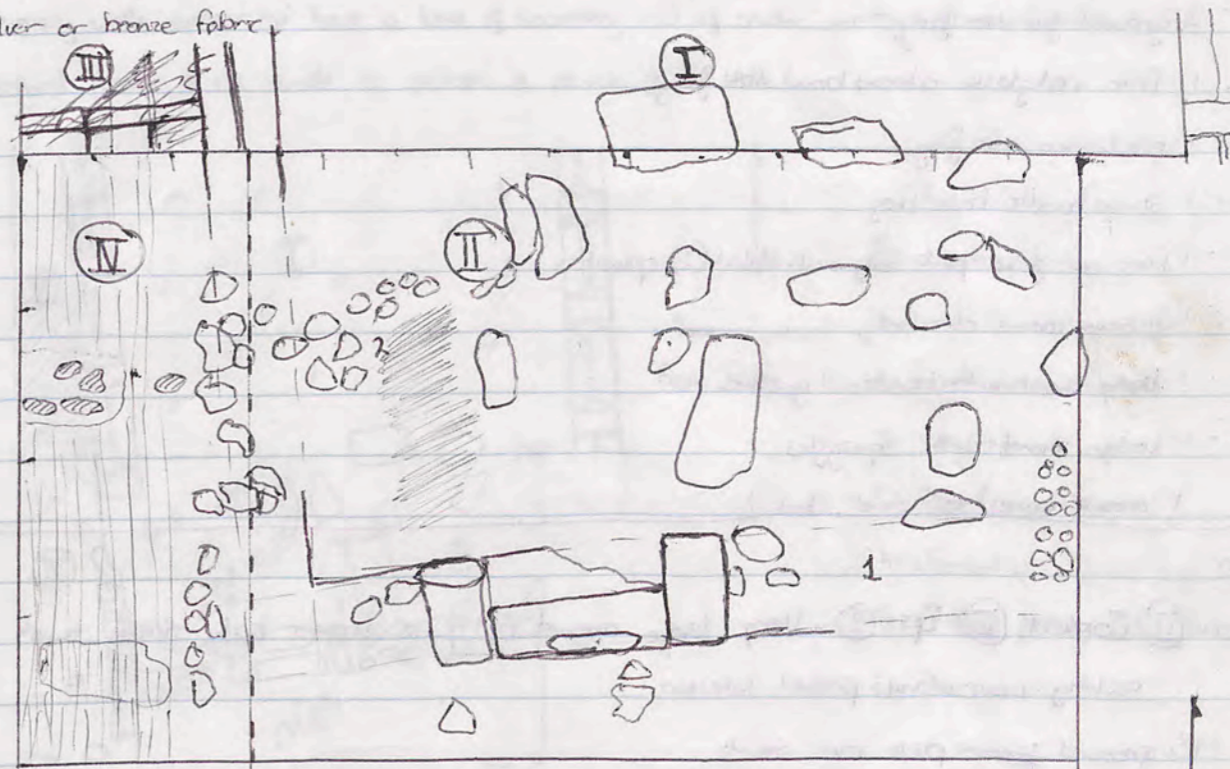
- 2 round base frag.
- 10 ring base frag.
- 2 fish plate bases.
- 8 grooved jar rim frag.
- 2 adjoining red-glaze fine large plate rim base frag.
- 2 fine red-glaze body frag. (plate)
- 1 fine red-glaze bowl body frag.
- 3 montanum rim frag.
- 8 grooved plate rim frag.
- 1 red-glaze jar rim base frag.
- 1 echinus bowl rim frag.
- 3 out-turned shallow bowl rim frag.
- 2 out-turned jar-rim frag.
- 1 strap-handle base frag.
- 1 red glaze fine grooved body sherd.
- 2 narrow vessel neck frag.
- 1 straight-sided bowl rim frag.
- 1 body sherd with internal horizontal groove.
- 2 body sherds with fern-like grooves
- 2 body sherd with grooves in various directions
- 1 body sherd with external horizontal groove.
- 1 very large (thick) body sherd with external horizontal rib.
- 2 amphora(?) shoulder frag.

P. E. O. for ...

JK 96 T61 EC Akrop 2/10

29

- Began Locus **IV** Context **2** Spit **2**, with a fair amount of pottery and bits of a very broken oven (soft baked clay), as well as bone.
- Began Locus **II** Context **1** Spit **3**, with some pottery, and a metal disc/blob of possibly silver or bronze fabric.



Key

- = broken tenure fragments.
- = probable wall.
- = Locus boundary.
- = floor level in Locus **IV** Spit **2**.
- = ashy soil.
- = figurine frag.
- = silver/bronze disc.

- What appears to be a floor is encountered in the south of Locus **IV**, but appears to drop away when the tenure fragments are encountered. It was (the oven) probably broken by the fall of the wall? Swept and left.
- Encountering ashy soil in the western part of Locus **II**, North of the EW wall, Signifying change of Context to Context **2**, with a fair amount of quite broken pottery. Bagged with beginning of Context **1** Spit **3**.
- Figurine fragment found in Locus **II** Context **2** Spit **1**. Looks like a woman's dress and a foot?
 * Labelled Context **2** Spit **1**
- Encountered corner (inner) of EW + NS walls.
- 2 bags of pottery, one from each Locus.

2/10

Locus ④ Context ② Spit ②

- Medium amount of body sherds, some cooking, some pitched interior.
- 4 ring base frag. (1 complete)
- 7 grooved plate rim frag.
- 2 grooved jar rim frag.
- 1 fine red glaze echinus bowl rim frag.
- 1 mortarium rim frag.
- 1 strap handle base frag.
- 1 fine red glaze plate frag. with black(?) splotches.
- 1 echinus bowl rim frag.
- 1 body sherd with horizontal groove.
- 1 body sherd with squiggles.
- 1 coarse ware plate sherd (body)

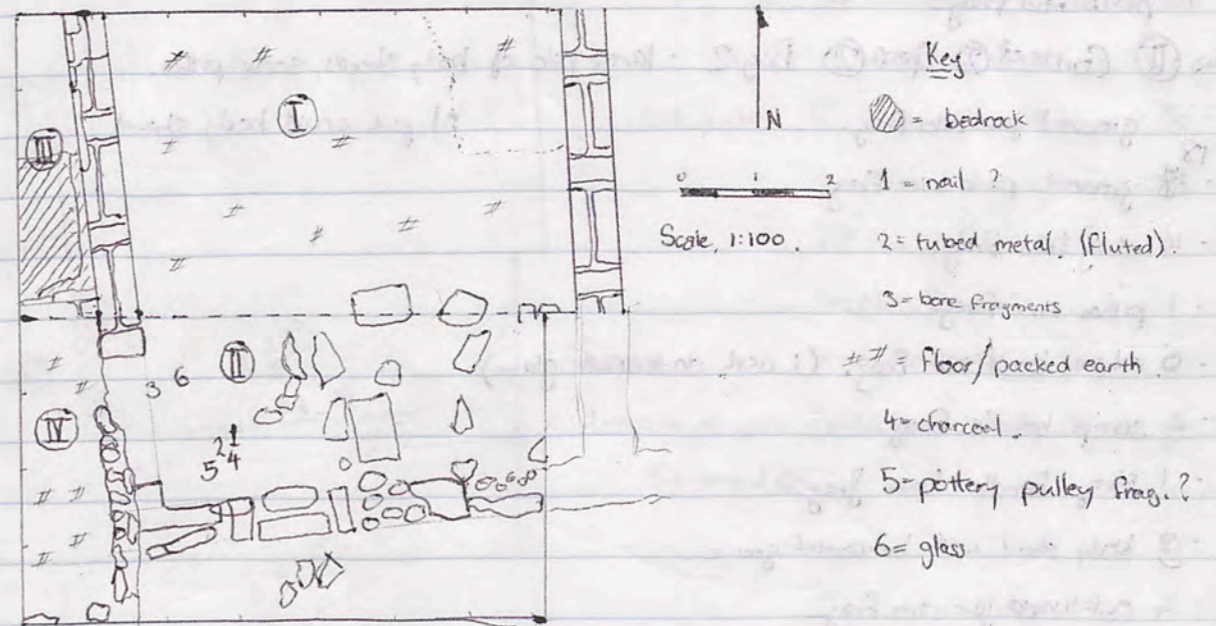
3/10

Locus ② Context ② Spit ②. Very large amount of quite broken body sherds with some cooking ware and pitched interior.

- 13 grooved ~~jar~~ plate rim sherds.
- 10 ring base frag. (1 with red glaze).
- 1 fish plate base frag.
- 1 unguitarium toe frag.
- 6 echinus bowl rim frag.
- 4 strap handle base frag.
- 5 grooved jar-rim frag.
- 1 strap handle frag.
- 3 mortarium rim frag.
- 2 out-turned jar-rim frag.
- 5 straight-sided bowl-rim frag. (1 with red glaze) (1 with black glaze, and internal grooved lip).
- 2 coarse pithos rim frag.
- 1 body sherd with groove (hole?).
- 1 body sherd with vertical grooving.
- 1 ~~body~~ out-turned jar-rim frag.

Thursday:

- End of Semester 1 today on the Jelak. Destination Tartus this afternoon.
- Began Locus ② Context ② Spit ②. Uncovering large worked stones similar to that of Locus ① in the north of the trench. Fair amount of very broken pottery coming up amongst the rubble.
- Primary walls appear to have a kind of secondary tier of smaller unworked stones. Possibly just a natural feature of the tumble, or perhaps a re-use of the walls.



- Piece of fluted iron uncovered in the inner south west corner of Locus ②. (In two pieces).
- Bone fragments excavated near the wall (N/S) in Locus ②, quite alot.
- A couple of small pieces of charcoal found in SW part of Locus ②, as well as a couple of roof tile fragments.
- What appears to be part of a pottery pulley, for water, was excavated near the corner of the walls in Locus ②. (Hindsight suggests a pithos base!).
- Glass piece found in North west of Locus ②.

7/10

JK96 T61 Locus ① Context ② Spit ② Bag 1

- Smallest amount of medium-ware body sherds, some fineware
- 1 pithos base frag
- 3 ring base frag. (1 red glaze)
- 1 strap handle rim frag.
- 1 out-turned jar-rim frag.
- 2 body sherds with horizontal groove
- 1 plate rim frag.

Locus ① Context ② Spit ② Bag 2 - large pile of body sherds, some pithos.

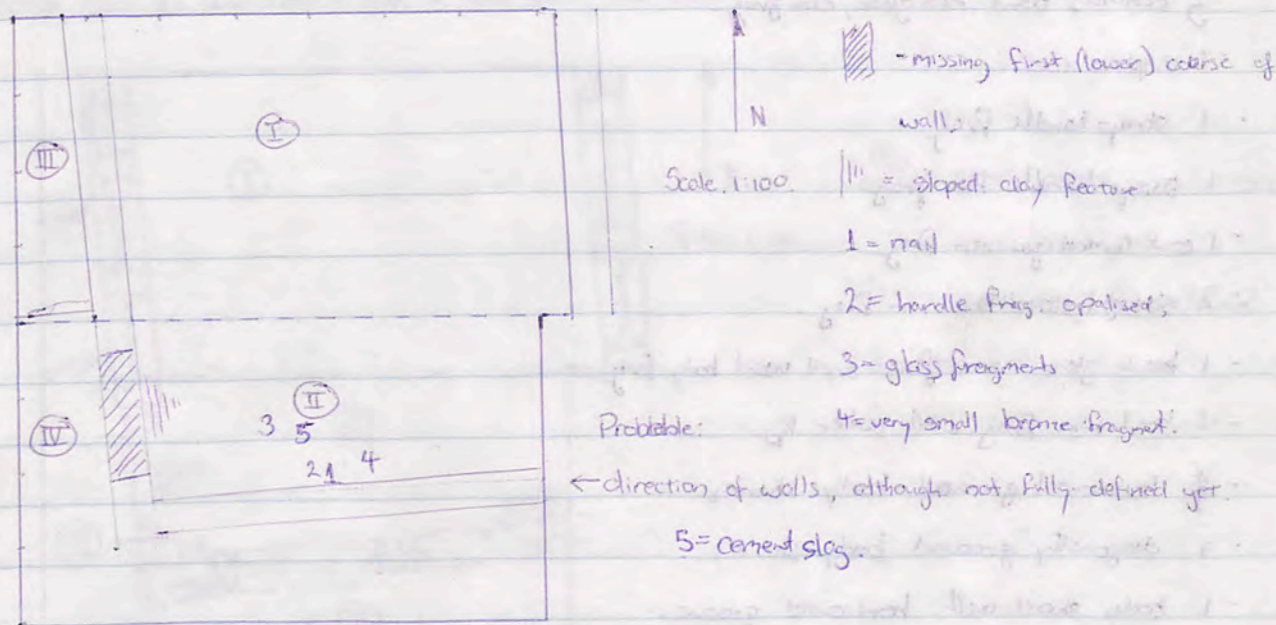
- 8 grooved jar-rim frag.
- 1 grooved plate-rim frag.
- 14 ring base frag.
- 1 pithos rim frag.
- 6 echinus bowl rim frag. (1 with dark red glaze)
- 4 strap handle frag.
- 1 strap handle base frag.
- 3 body sherd with horizontal groove.
- 4 out-turned jar-rim frag.
- 1 amphora toe frag.
- 1 lug handle frag.
- 2 montenian rim frag.
- 5 straight sided bowl rim frag.
- 4 outer-lip bowl/jar rim frag.
- 1 pie crust body sherd

8/10 Locus ① Context ② Spit ③ Bag 1 - Medium pile of body sherds, some cooking ware

- 9 grooved plate rim frag.
- 2 ring base frag.
- 1 pie crust rim frag.
- 1 pie crust body sherd
- 3 grooved jar-rim frag.
- 3 echinus bowl rim frag.
- 2 montenian rim frag.
- 1 body sherd with 2 grooved horizontal lines.
- 3 out-turned jar rim frag.
- 3 shallow bowl rim frag.
- 2 straight-sided bowl rim frag.
- 1 black glaze ridged bowl rim frag.
- 1 echinus ? red glaze body frag.

JK 96 T61 EC Akrop 7/10

Continued Locus ①, Context ②, Spit ②, removing large worked stones into its northern part of Locus ①, and totally removing the heavily eroded and unrecognizable ones. Pottery and bone predominantly very broken.



- Southern part of N/S wall appears to be missing the lowest level of stones, the debris seems irregular 146 cm, and doesn't fit well with the normal header-stretcher block sizes. Is this a doorway? There is a sloping clay feature running down from this area into locus ②. It's possible that in secondary occupation that the course of stones were removed and that the sloping clay is just a natural feature of erosion, but there is pottery and bone embedded into it. Primary or secondary is not clear. Interestingly the grey colour of Locus ④ carries over to this "ramp".
- A nail, and glass fragments along with a handle frag. (twisted) which has been slightly splintered found in Locus ② Context ② Spit ②.
- A cement-slag piece found in Locus ②, Context ② Spit ②. (green hue)
- 2 bags of pottery from Locus ②.

Locus ① Context ② Spit ③ Bag 2. • Medium pile of body sherds.

- 9 ring base body frag.
- 4 grooved jar rim frag.
- 3 grooved plate rim frag.
- 1 mortarium rim frag.
- 3 echinus bowl, red glaze, rim frag.
- 1 amphora toe.
- 1 strap handle frag.
- 1 strap handle rim frag.
- 1 out-turned jar rim frag.
- 2 straight sided bowl rim frag.
- 1 black glaze semi fine small vessel body frag.
- 1 bowl rim frag with outer lip.
- 4 horizontal grooved body sherds.
- 1 diagonally grooved body sherd.
- 1 body sherd with horizontal groove.

Locus ① Context ② Spit ②. • Small amount of m.w. body sherds.

- 1 amphora base frag.
- 3 grooved jar rim frag. (2 adjoining)
- 5 ring base frag. (2 adjoining)
- 1 strap handle rim frag.
- 1 double handle frag.
- 2 echinus bowl rim frag. red glaze fine.
- 2 mortarium rim frag.
- 1 neck frag with horizontal grooving.

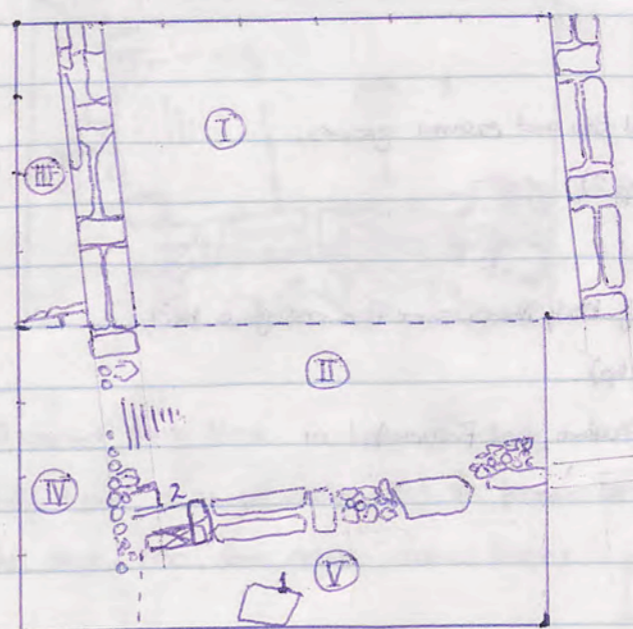
Locus ① Context ② Spit ①. • Small pile of body sherds.

- 5 ring base frag.
- 2 fish plate base frag.
- 11 grooved plate rim frag.
- 1 strap handle frag.
- 1 round double handle frag.
- 2 mortarium rim frag.
- 1 grooved jar rim frag.
- 1 jar rim frag. with outer lip.
- 1 straight sided bowl rim frag. with internal grooves.
- 2 body sherds with 1 horizontal groove.
- 1 body sherd with pitched exterior.
- 1 shoulder frag. (amphora?)

Tuesday.

Finished off ~~the~~ eastern part of Locus ① Context ② Spit ②. Lots of large tumble and some bone and pottery sherds. Began Locus ① Context ② Spit ③.

• Definition of the E/W wall becoming more clear. Define Locus ⑤ as the area south of the east-west wall and east of the N/S wall. Locus ⑤ Context ② Spit ①. Quite a lot of small rocks (size of a sheep's head?) and a few sherds and bones.



- Key
- = stone pieces or wall rocks
 - ▨ = sloping clay (floor/ramp)
 - = glass frag.
 - ☐ = seal, with sword imprint.

• Blocker soil almost immediately upon embarking on the ~~the~~ Locus ① Context ② Spit ③ was encountered. leveled off at this point, some ^{mineralized} ~~mineralized~~ bone.

• Seal found in SW corner of Locus ⑤, imprint of a 'sword' on it.

Locus ① Context ② Spit ②. Small pile of body sherds, and some pythos and cooking ware.

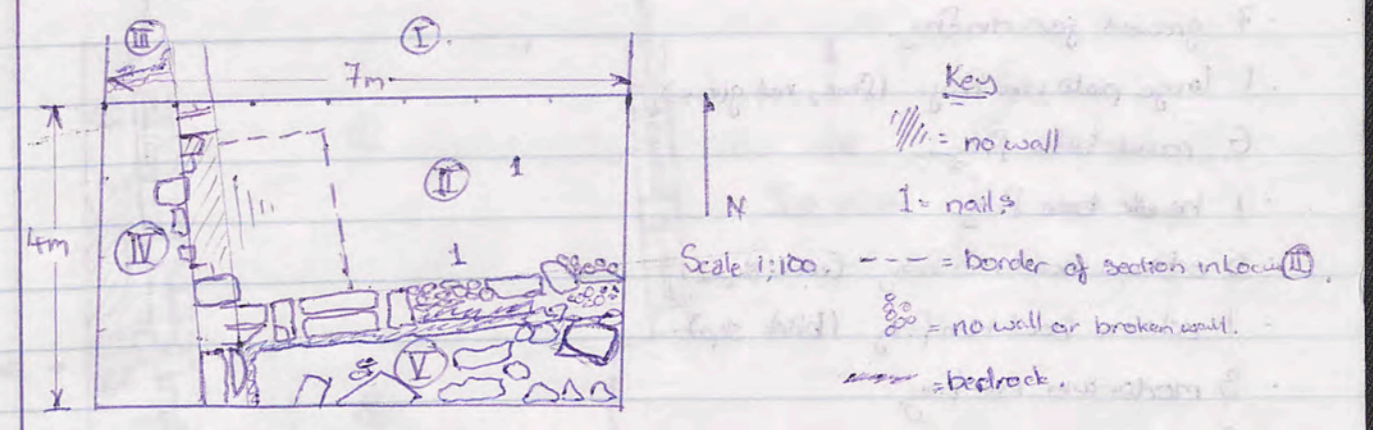
- 2 echinus bowl rim frag.
- 98 grooved plate rim frag.
- 1 grooved jar rim frag.
- 1 strap handle frag. (from base).
- 1 fine red glaze base frag.
- 1 body sherd with diagonal groove.
- 1 fine red glaze with groove.
- 2 straight sided bowl rim frag. (1 with red slip and external groove).
- 1 sherd from base with external glaze gray (slip?).
- 1 coarse ware nob.

Locus ② Context ③ Spit ①. Bag 1. Small pile of body sherds, some fine red glaze body.

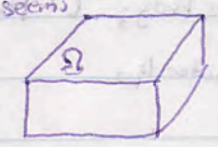
- 11 grooved jar rim frag. (1 with pinched lip).
- 5 complete strap handle frag. (1 coarse ware, red fabric).
- 1 strap handle rim frag. from jar.
- 1 strap handle base frag.
- 2 mortarium rim frag.
- 5 grooved plate rim frag.
- 1 echinus bowl rim frag. red + black slip.
- 11 ring bases (2 with red glaze).
- 1 fish plate base frag.
- 1 amphora toe.
- 1 pie crust rim frag.
- 1 body sherd with pie crust ridging.
- 1 red glaze plate rim frag. (fine).
- 1 red glaze plate base frag. (fine).
- 3 red glaze plate body sherds (fine).
- 1 echinus bowl body sherd.
- 1 jar rim frag. with outer lip.
- 1 straight sided jar rim frag.
- 2 shallow bowl rim frag.
- 1 body sherd with vertical groove (red slip).
- 1 body sherd with horizontal grooving.

P.T.O. for Bag 2.

Wednesday
 • Decided to Section Locus ②, leaving what appears to be the secondary occupation ramp, in the west, and dig around it. Beginning with a change of context as it involves cutting through some of the higher floor layer. Locus ② Context ③ Spit ①.
 • Begin Locus ⑤, Context ② Spit ②.



• A worked stone block in Locus ⑤ with a knob on it was uncovered. For fitting or just not fully dressed is as yet unclear, but the former seems more likely considering the rest of the stone. Also some regular worked blocks being excavated.



• Lots of bone, pottery, some charred with ashy soil coming up in Locus ②. A number of jar handles, therefore differing slightly from Locus ① which was big on plates. Both pointing toward Primary domestic use.

• In Locus ⑤ we've encountered the foundation wall, even where there is no wall, and just a pile of rubble. Possibly indicating early loss of the bottom course of stone, and replacement by smaller unworked blocks.
 • The foundation "blocks" actually appears to be bedrock, one continuous stone, with large rubble tumble over the top.

9/10 JK96 T61 CC Akrop

Locus II Context 3 Spill 1 Bag 2. - Large pile of body sherds, some cooking ware.

- 1 amphora toe.
- 1 large round handle frag.
- 13 ring base frag. (1 with red glaze).
- 16 grooved plate rim frag.
- 7 grooved jar-rim frag.
- 1 large plate rim frag. (fine, red glaze).
- 6 round base frag.
- 1 handle base frag.
- 5 echinus bowl rim frag. (red slip).
- 1 echinus bowl rim frag. (black slip).
- 3 mortarium rim frag.
- 2 adjoining out-turned jar rim frags.
- 4 shallow bowl rim frags.
- 6 straight-sided bowl rim frags. (1 fine red glaze).
- 1 bowl rim frag., with outer lip.
- 1 jar rim frag.
- 5 body sherds with horizontal grooving.
- 1 fine red glaze (with dark slip) body sherd.
- 1 body sherd with diagonal grooving.
- 1 fine red glaze body sherd with groove.
- 1 coarseware jar rim frag.
- 1 small vessel shoulder frag.

10/10 Locus II Context 3 Spill 1. - Small amount of body sherds and some pithos.

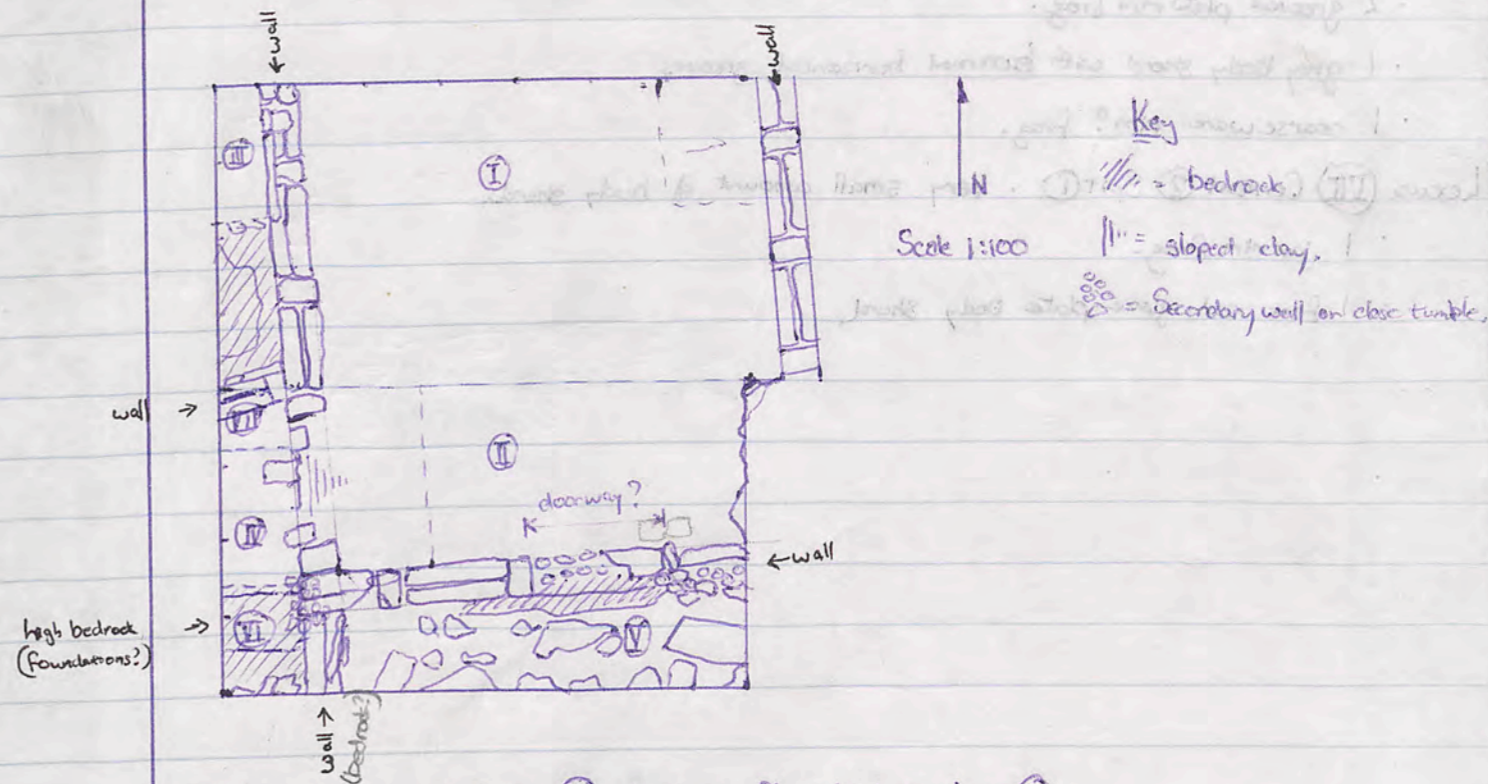
- 1 amphora toe.
- 1 grooved jar rim frag.
- 1 ring base frag. (cooking ware?).
- 1 grooved plate rim frag.
- 1 red glaze plate base frag.
- 2 body sherds with horizontal groove + squiggle.
- 1 body sherd with horizontal groove, (green exterior).
- 1 body sherd with horizontal grooves.
- 1 fine body sherd, yellow fabric.

P.T.O. for next bag.

JK96 T61 CC Akrop 10/10

39

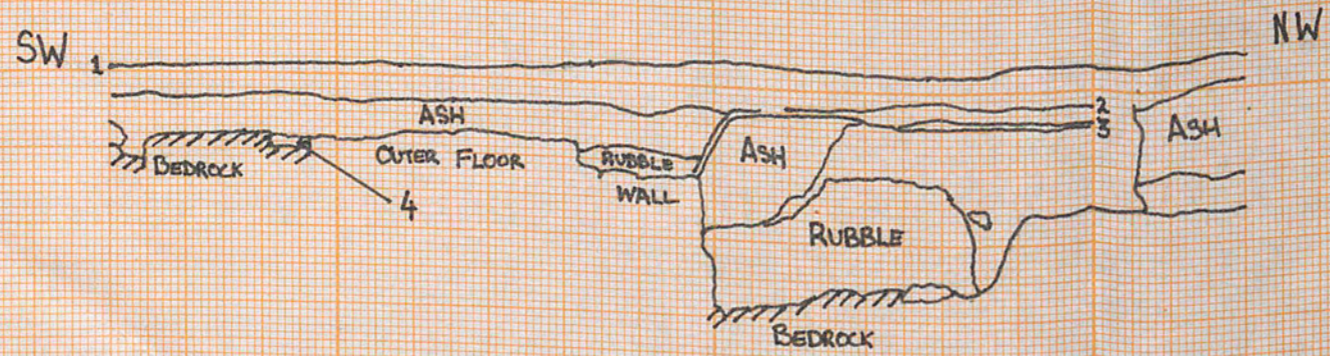
Continued Locus II, Context 3, Spill 1, and encountered floor level, Primary. This east-west running wall appear to either have a doorway, or early robbed stone with secondary wall blocking the space.



- Finished and swept Locus II at same floor level as Locus I.
 - Sectioned Locus IV to verify the continuation of the EW wall, Locus VI Context 2 Spill 1, encountered bedrock after 3-4 cm.
 - Sectioned northern area of Locus VI, to gain definition of the central east-west wall, Locus VII.
- 3 bags of pottery.

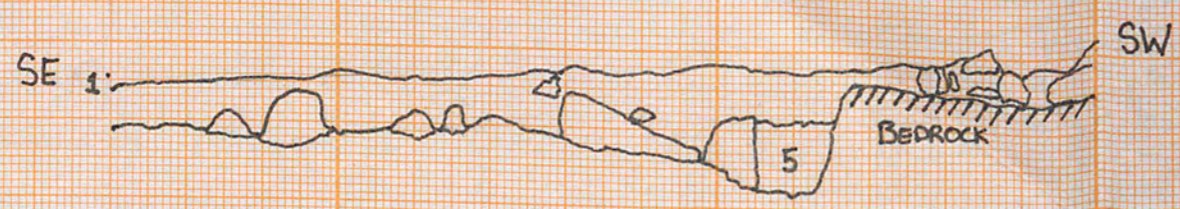
* Swept and photographed on ~~Wednesday~~ Tuesday 15/10.

JK'96 T61 Akrop EC.
SECTIONS.



- Key
- 1= TOPSOIL
 - 2= BROKEN FLOOR
 - 3= WHITE FILL
 - 4= DARK ASH
 - 5= SAND
 - D= STONE

SCALE 1:50
0 50 100 cm



567
15
280
560
840

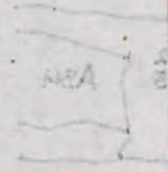
J.K. & T.E. Akrop Ec.

SECTIONS

- 1- TAVOON
- 2- BROKEN FLOOR
- 3- WHITE FILL
- 4- DARK ASH
- 5- SAND
- 6- STONE

Scale 1:50
 0 50 100 cm

NW



SW

567
 15

 280
 560

 840