



# A4 NOTE BOOK

No. 595

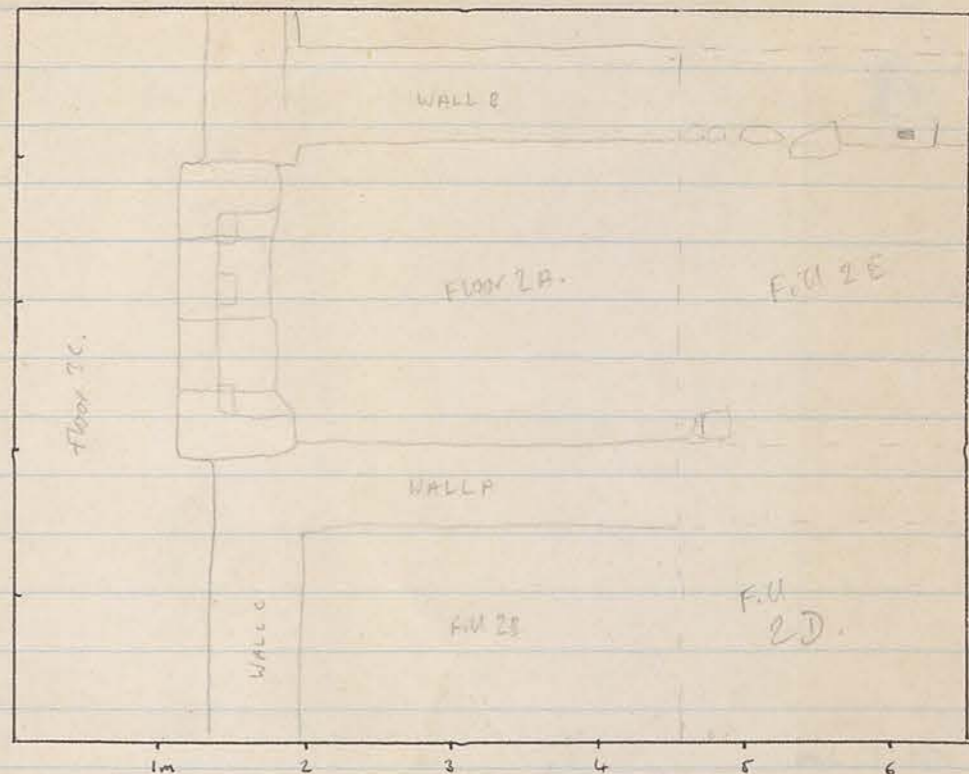
EXCAVATION RECORD BOOK. 2.  
JK DOM 1995. Sarah Myers.

123/2 cont.  
98/3 cont.  
124/8



JK DOM  
123/2  
8/10/95

123/2



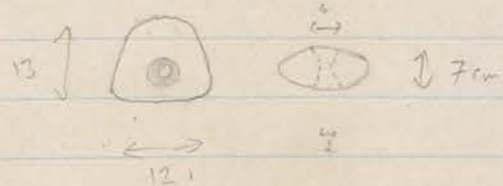
Sketch 1:50

① D. extension

6:00am. removing 10cm of 1A. to make level or find floor 2A. The walls A & B are not clearly defined at their Eastern end yet. Will call this area D extension until walls are further defined. The level is still ①.

7:00am. Floor 2A continues across extended area between walls A & B. There are some large stones which break into the floor. There may be a wall to the south of wall A running N-S. It would connect with the wall from Karins trench 3 metres to south.

10:30am. Object 31. Basalt stone with hole pierced through.

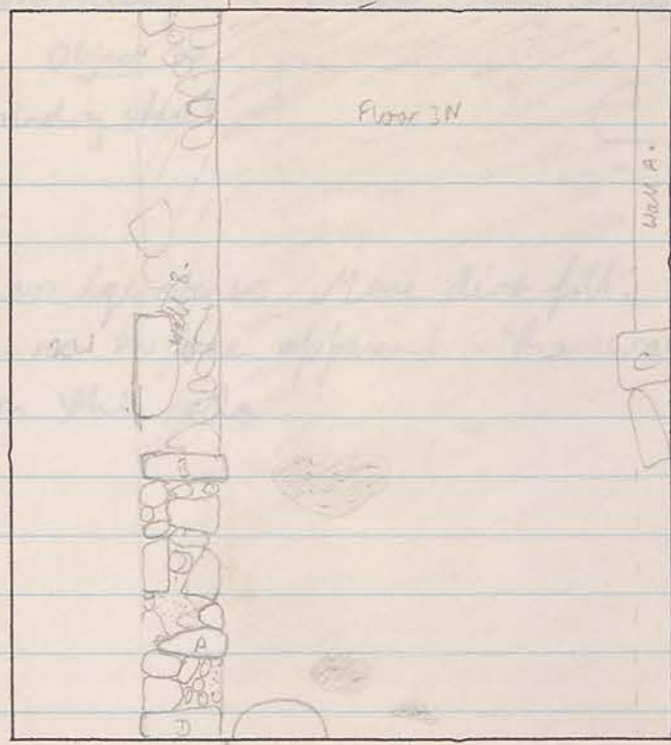
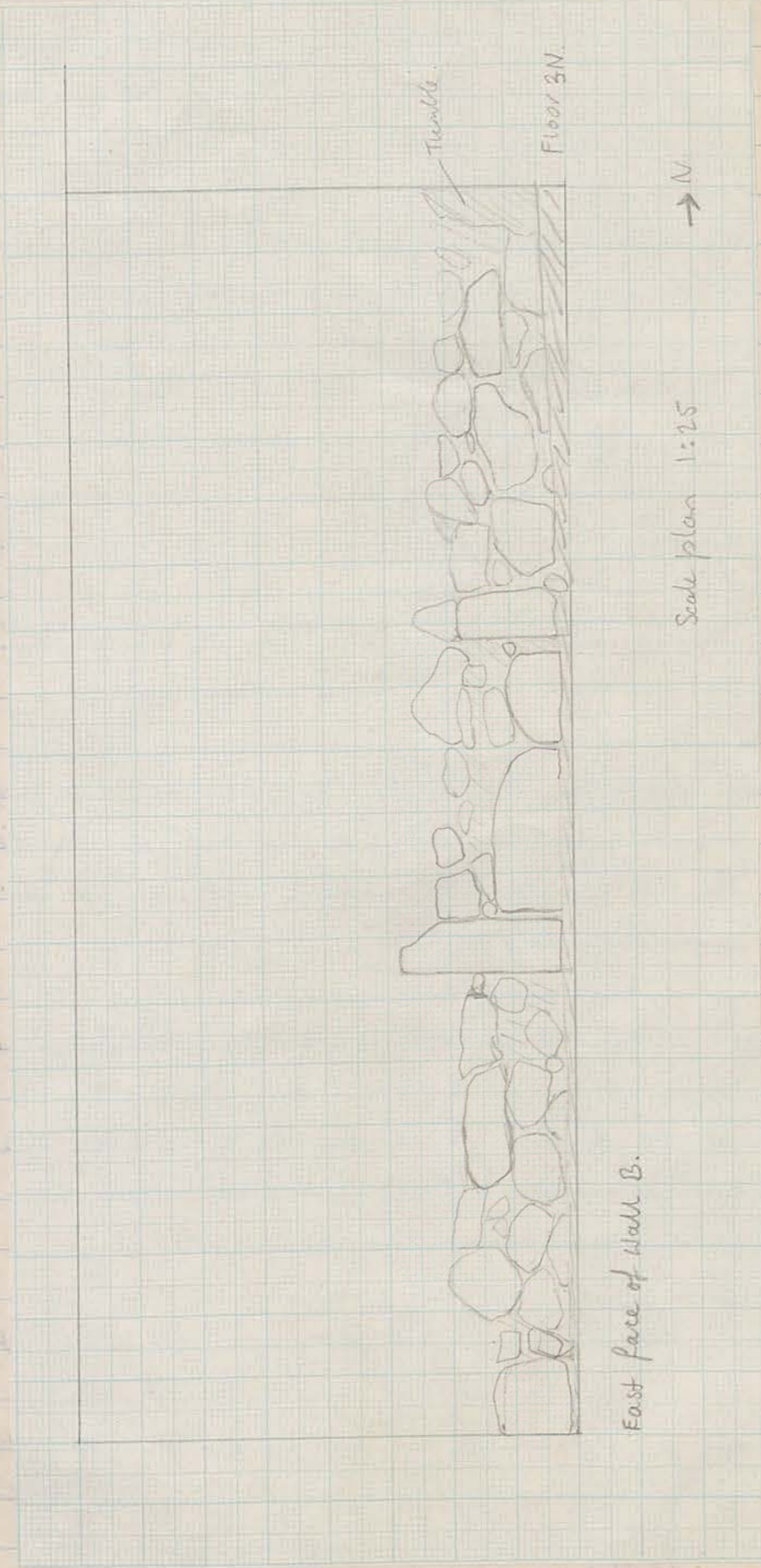


found in wall A near to intersection with wall C.

Wall B. may have a doorway at its Ea. end. A large stone level or just above floor 2A has a square cut into it.

JK DOM  
98/2  
8/10/95.

98/2



Fill 2W

6:00am. Removing tumble from W. side wall B. Now calling this level 2W. because below topsoil. Hope to define the outside face of the wall, and see the structure of the wall between rocks A & B. which were thought to be a doorway.

7:00am Many large stones same type as those from wall B. Not much pottery - none intact as yet. The wall B. is between 60cm & 70cm wide. There is no doorway!

8:00am. Wall B. is very solid, several very large stones. Removed the stones which protruded from the wall between <sup>1st</sup> stone A & B. to see wall. I figured this had slid from the wall. The rocks behind are rather uneven. There is a large rock (against the silt bank) crossing the wall Rock D. See section opp. pg.

5KDOM

98/2

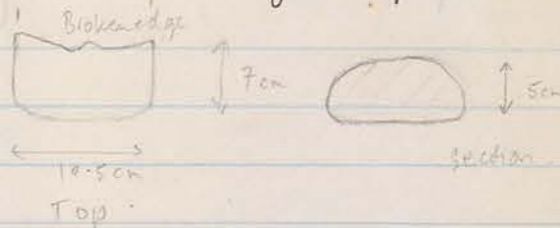
8/10/95.

(2)

9:30am. Continuing to remove rocky collapse on W. side of wall B.

Object 30

Basalt grinding stone?



10:30am. Less lge stones. More dirt fill. Rocks below this level. - no surface apparent. The wall B appears rather rough on this side.

123/2

(2)

There is a floor surface extending north from this stone. Clearing surrounding small stones to define this section of the wall.

123/2.

9/10/95

6.00 am. Clearing down for photograph.  
Roll (6) 10-15.

98/2.

6.00 am Clearing down for photograph.  
Roll (6) 16-19.

Teams moved to new trenches.

Team A (Hussein) now working to east of 123/2.  
Have picked round the edges

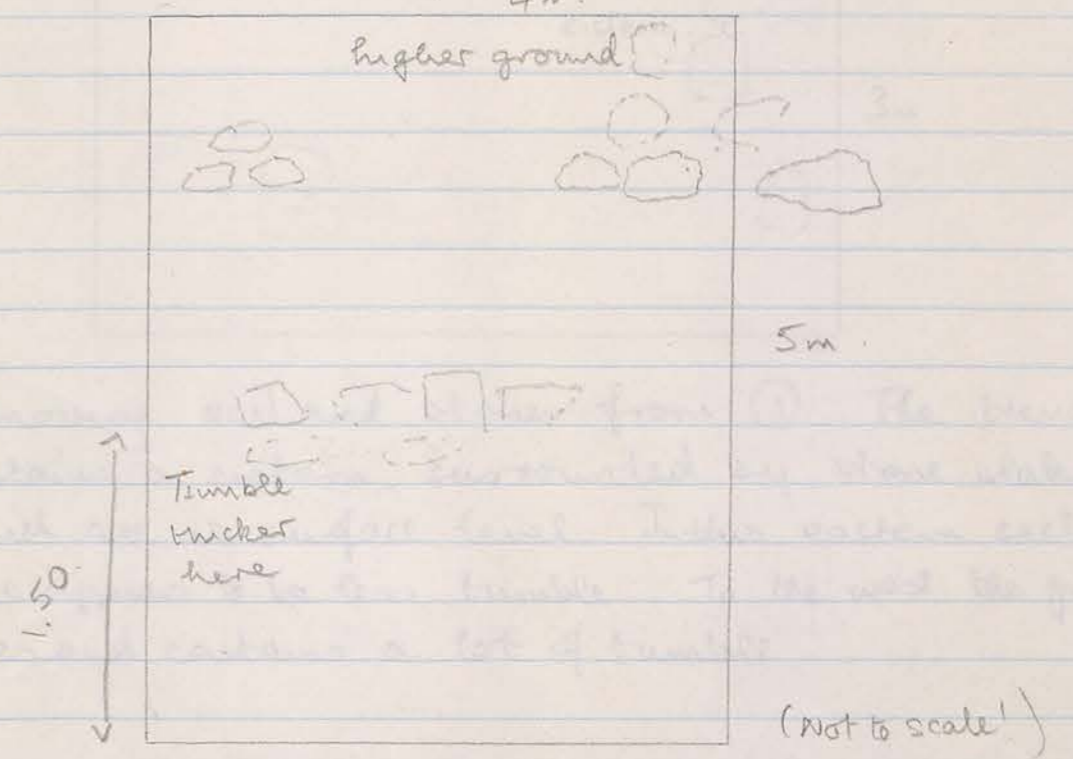
Team (B) (Muhammed) now working in trench to north  
of 98/2, between it and 74/1 = 98/3

New trench to east  
of 123/2 = 124/8.

8/10/95

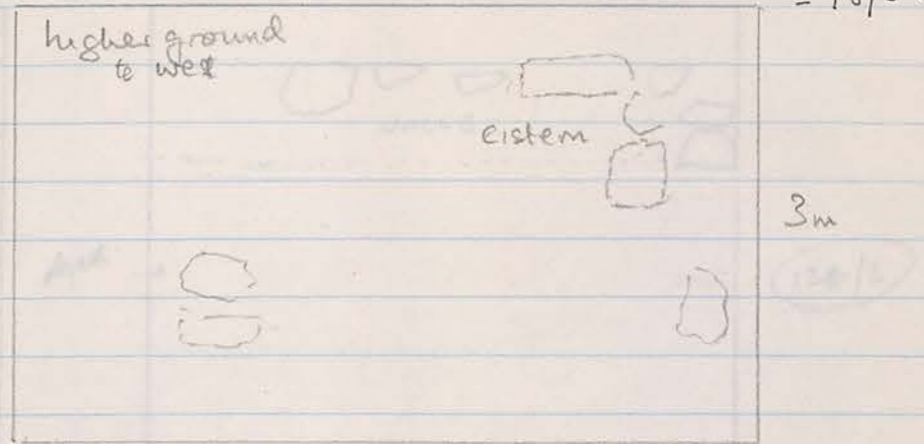
4m x 5m

↑ N 4m



9.30 Removing topsoil and small stones in ①  
 Too soon to look for structures, but it looks  
 possible that wall A in 123/2 continues eastward.

124/8  
 New trench to north of 98/2 9/10/95  
 5 = 98/3.



Removing soil and stones from ①. The trench contains a cistern, surrounded by stone slabs which are at surface level. In this eastern section there appears to be less tumble. To the west the ground rises and contains a lot of tumble.

*[Faint, illegible handwritten notes on the left page]*

*[Faint, illegible handwritten notes on the right page, partially obscured by the spiral binding]*

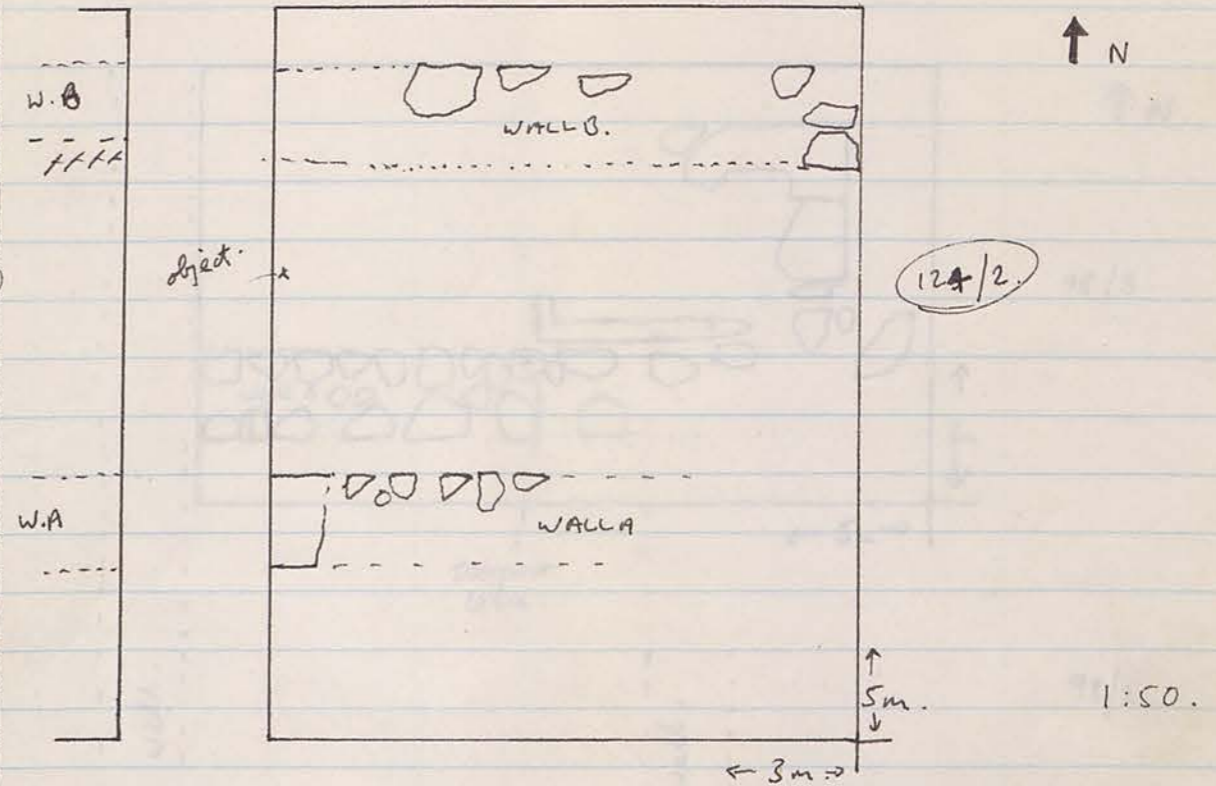


*[Faint, illegible handwritten notes on the right page]*



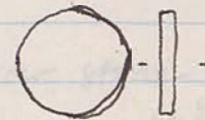
JKDOM  
124/8  
11/10/95

124/8



①. 6:00am. Continuing to remove soil from between tumbled surface stones level ①. Walls A & B appear to continue East. Large flat stone in wall against the west baulk. I will continue to call these walls, wall A and wall B.

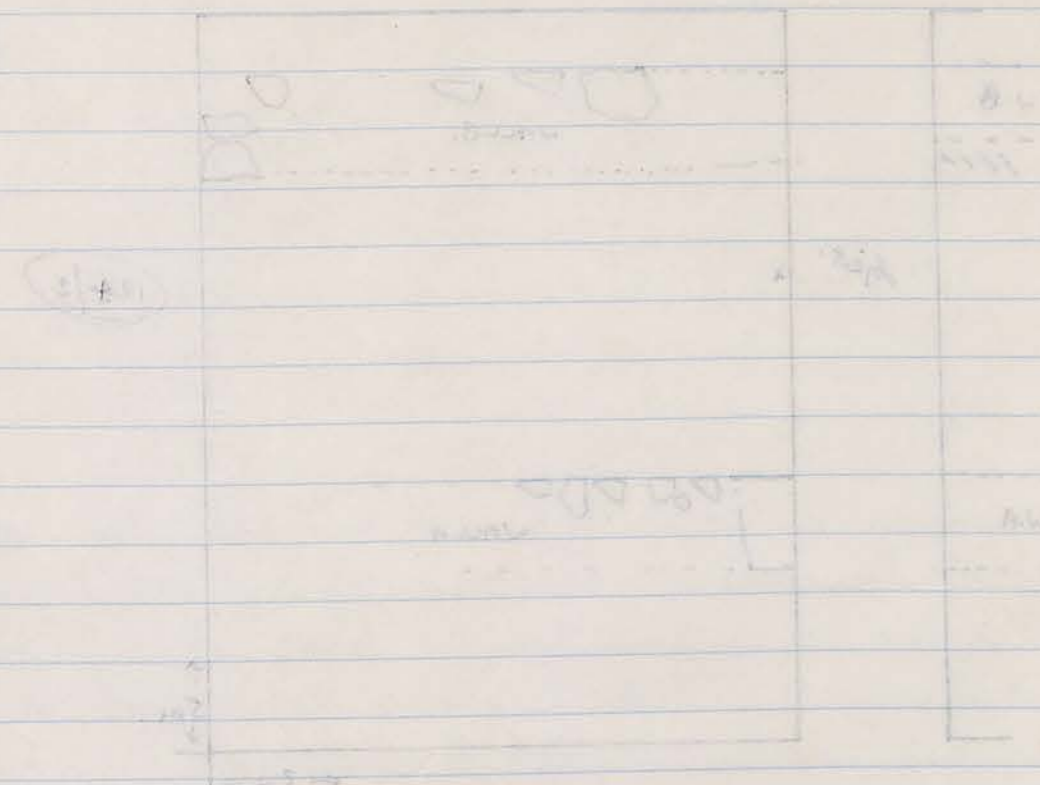
8:00am. Continuing the same gaming object 31. Small pottery disk (playing piece?)



9:30am. Clearing for photo of this level.

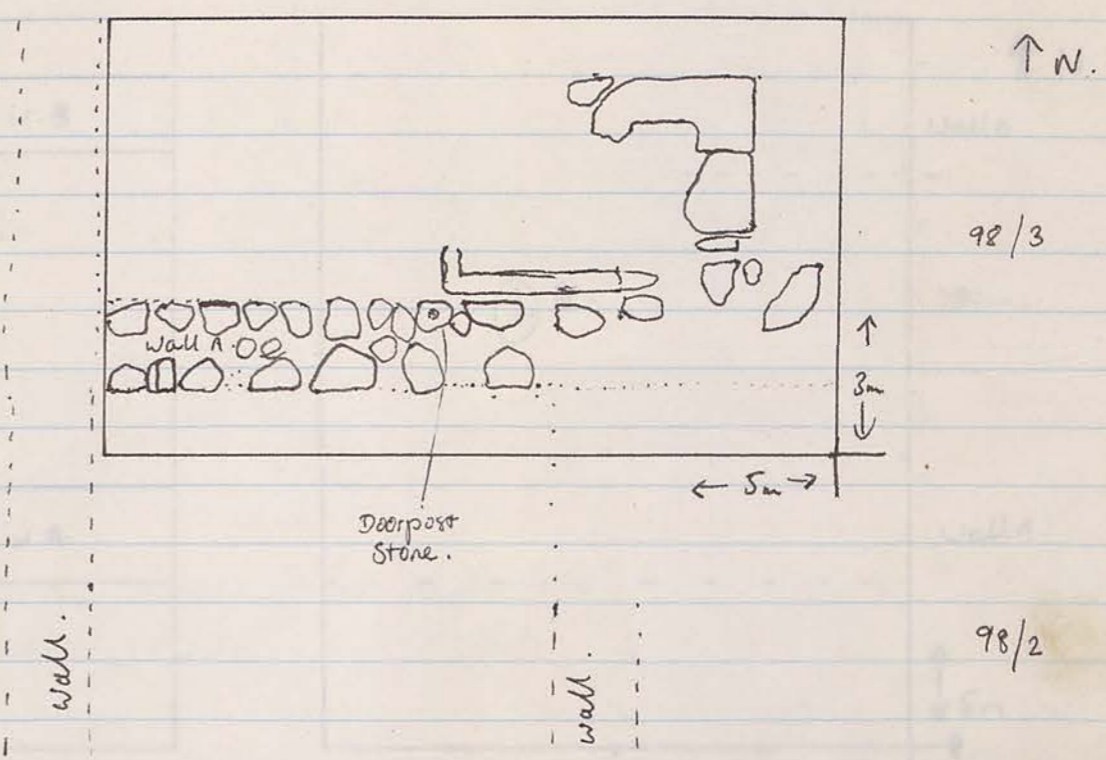
11:30 am Roll 8. 7-8.

8/18



JK 30m  
98/3  
11/10/95

12/18



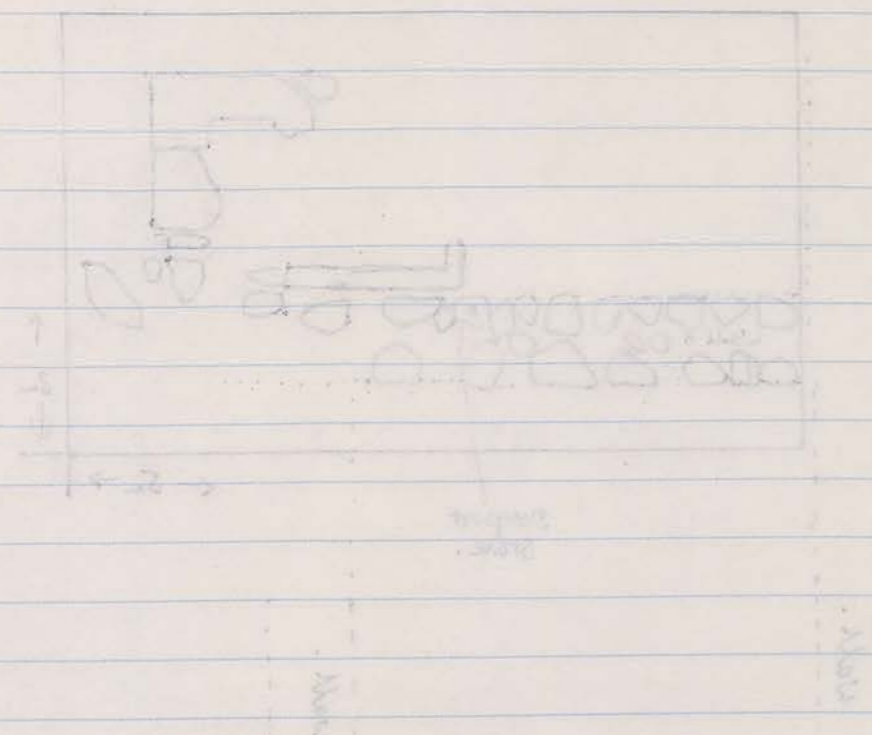
6:00am. Continuing to remove soil from between surface stones. Possible wall appearing running E-W in SW corner of locus: Wall A. Cistern in NE corner. Possible surface on east side level with top stones. Only about 4cm below surface.

8:00. Removing the hardened dirt around east side of cistern. I don't believe it relates to the cistern as a floor, but may be a recent surface of impacted dirt.

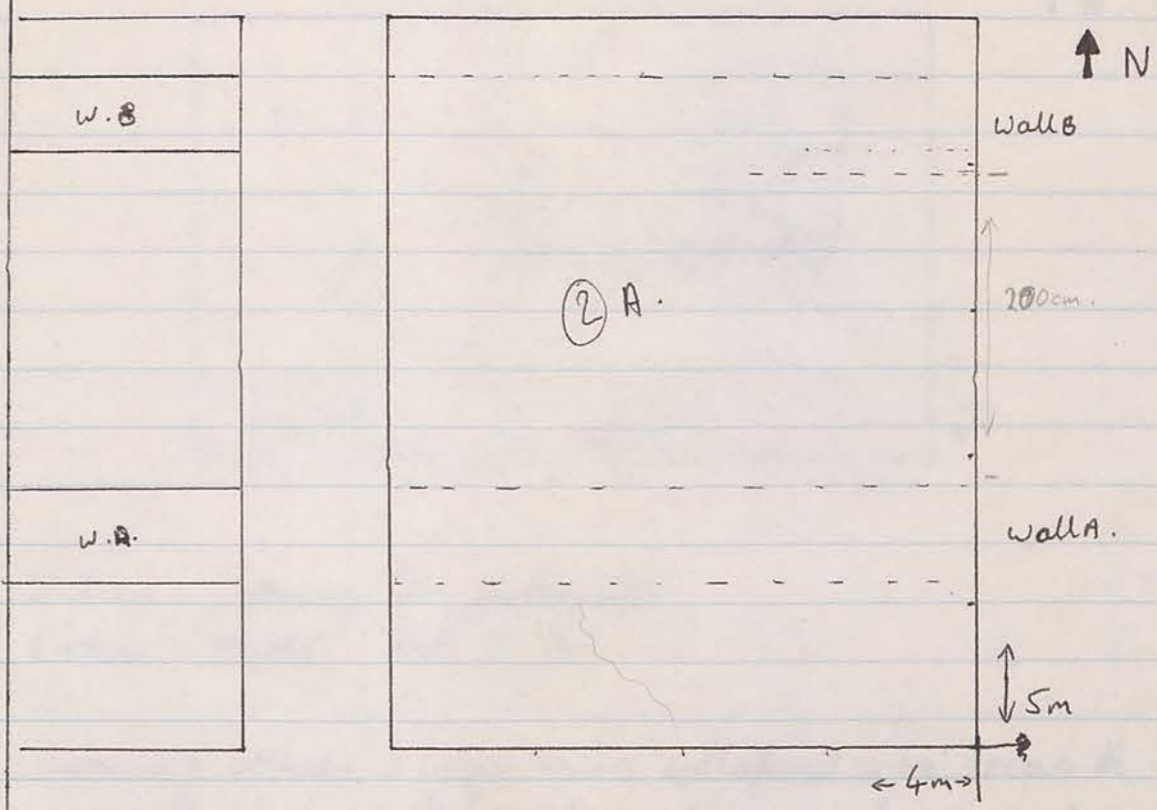
9:00. A long narrow stone lies beside wall A, <sup>against</sup> on the NW face. It runs across the <sup>south end of the</sup> cistern. At its eastern extent it forms a corner. It may be some sort of boundary wall for the cistern.

JK Dom  
124/8  
12/10/95

124/8



123/2



6:00am. Removing stones from between walls A & B.  
 This area will be called <sup>locus</sup> A. The level is 2 because  
~~where~~ this is the fill below topsoil. Fill A 2. ~~is~~  
 contains large rocks and crumbly dirt. I don't expect  
 to have to go far before floor level.

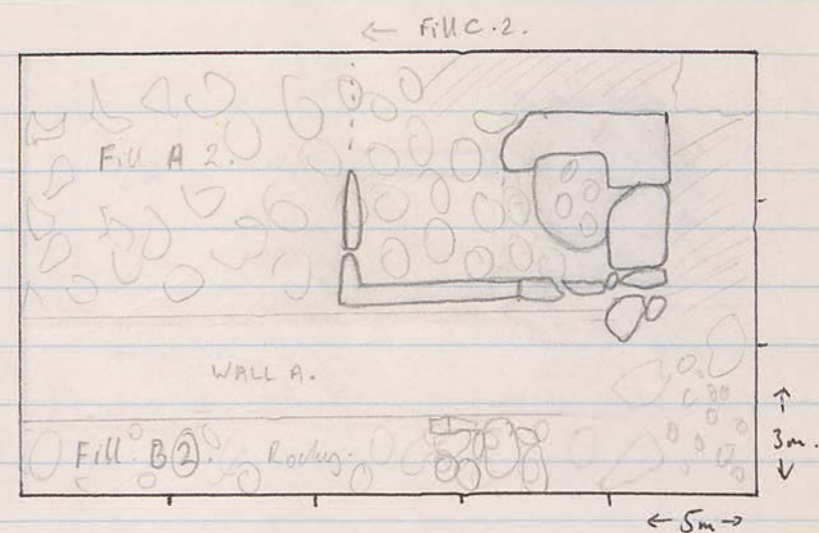
(2) A.

7:00am The floor has not appeared at the level I expected it.  
 The stones and loose dirt are continuing. Only few sherds.  
 Stones in tumbler are large like those from the walls.

10:30am. Removed 50cm of fill <sup>from surface.</sup> - continuing the same as above. <sup>so still level 2.</sup>  
 The 'corridor' / area between wall A & B. is 200cm, 40cm narrower  
 than in trench 123/2. (No narrower - HJ)

JK DOM  
98/3  
12/10/95

Roll 7/9-11



6:00 am. cleaning for photograph.

7:00 am. Photo. Roll 8, 9-11.

Fill A (2)

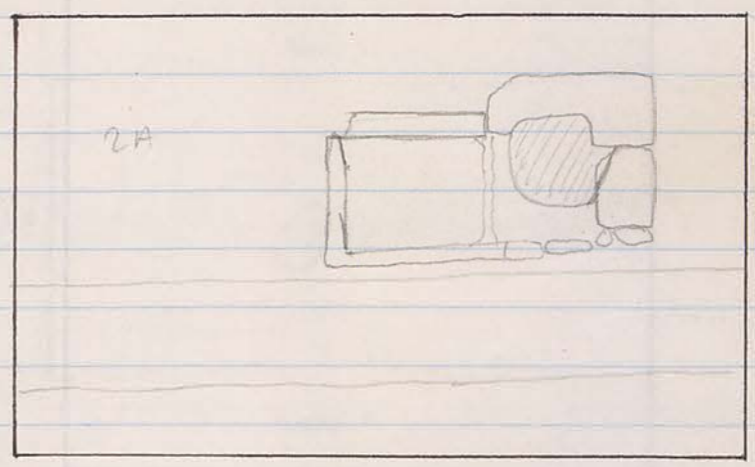
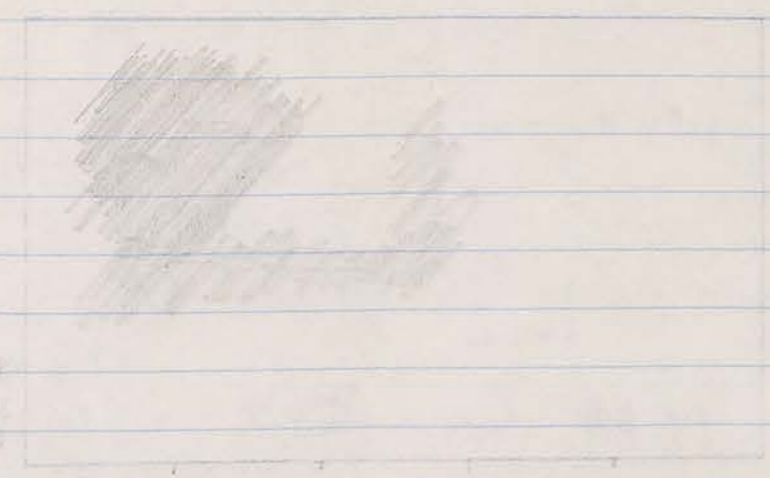
Removing stones & large rocks collapsed into locus A - probably from wall A. The rocks are of the same type and size as those used in the wall. Crumbly dirt between rocks.

Rocks moved from W. side of cistern have exposed a ~~small~~ holding basin. I will call this area locus C. There were some bones removed from here, and some pottery. The bottom of the basin is appearing. It is carved from stone.

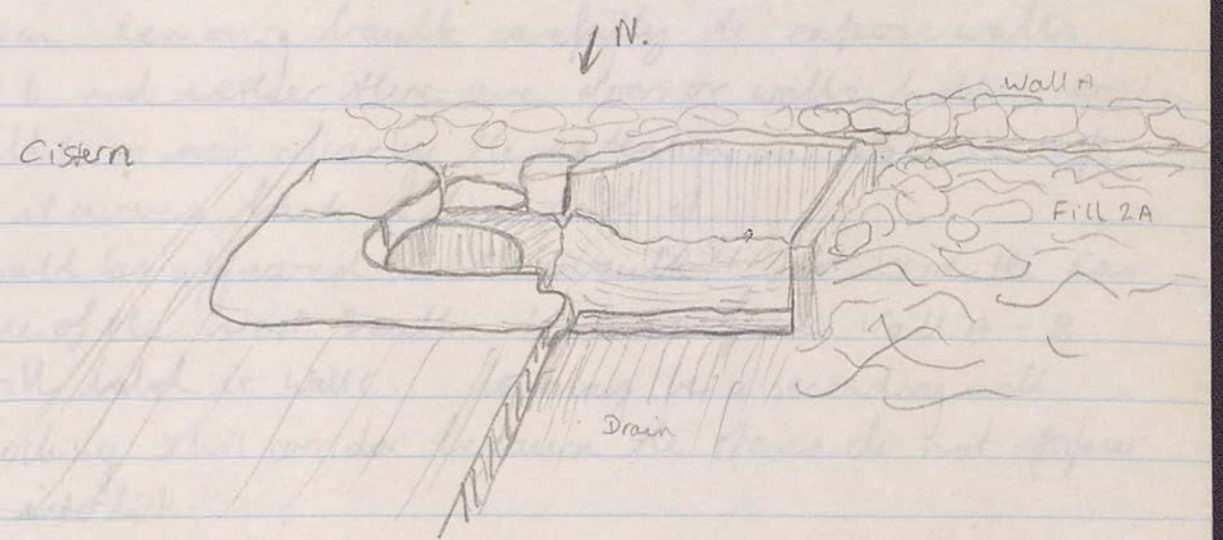
One large stone shaped into a dip forms the base. A stone stands behind backing against wall A. It is 40cm high from base. Another stone forms the West wall of the basin it stands 40cm above the base. Another stone lies across / forms the North wall, but it is only 4cm above base. It is like a step. There is a floor surface to the north of this which is 13cm above the steps.

JK DOM  
9813  
12/10/95

②



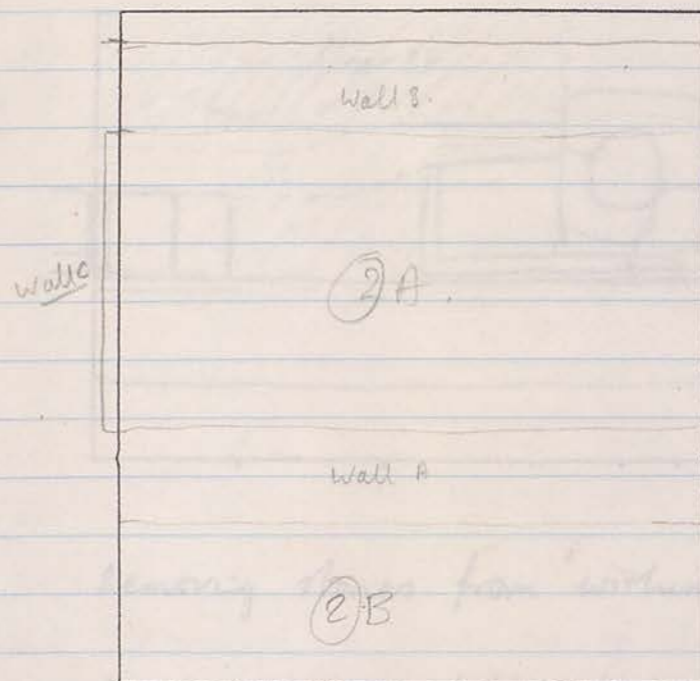
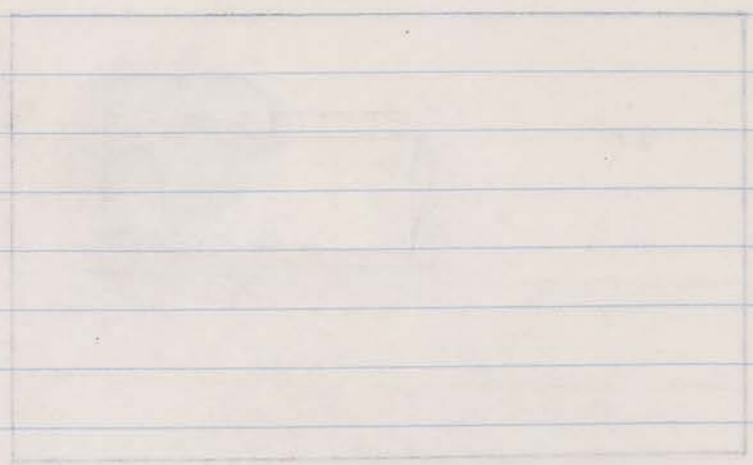
9:30am. Cleaned basin beside cistern. Apparently water was drained into the basin first and then into the cistern. This allowed the silt to drop and be held in the basin before polluting the water. The floor surface to the north of the basin is probably part of the drain.



10:30am. Removing stones & fill from 2A. - same fill continuing. 20cm below surface.

JK DOM  
124/8  
14/10/95

124/8



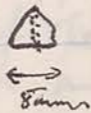
6:00am. Removing collapsed stone & fill from 2A.  
Defining inside faces of walls A & B.

7:00am Removing baulk carefully to expose walls  
A & B and whether there are doors or walls hidden within.  
Wall B is now clearly the extension on wall B in 123/3.  
as it curves back in line with it.

A wall has appeared in the baulk! Just inside the East  
face of the West. Baulk. It runs from Wall A - B.  
I will label it Wall C. It may be a secondary wall  
blocking this corridor because the stones do not appear  
to interlink.

8:00am. Will concentrate on removing baulk to expose wall c  
completely. And also remove some fill from the SE side  
of wall A & the north side of wall B to define these walls.  
I won't go further down in locus A. between walls A & B.

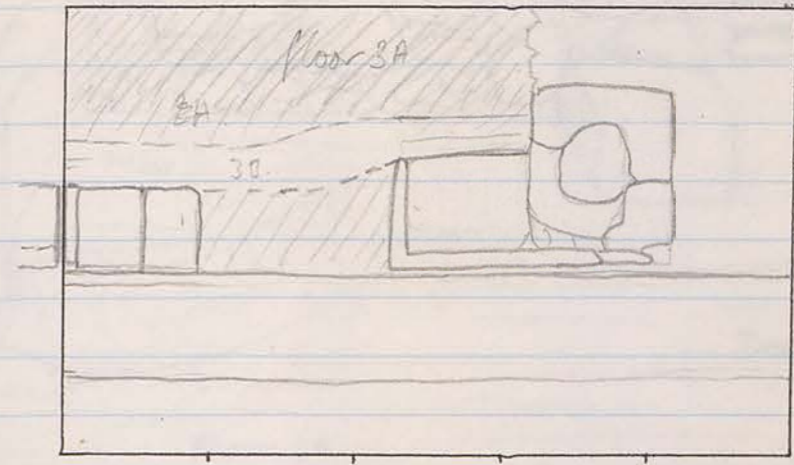
11:00am. While clearing locus A. Object 32. Glass bead.



8/15/95

JK DOM  
98/3  
14/10/95

JK DOM  
98/3  
14/10/95



cistern 6:00am. Removing stones from within the cistern.

② A. Removing more fill/collapse from W. side of cistern.

cistern 8:00am. Stopped removing stones from cistern because it has become clear that the cistern is very deep, and contains many more stones. I can gauge the shape of it from the top section. So I wonder if there is any point continuing. I will stop for now.

② A. Below ② A is a floor Bend<sup>9</sup> which extends from the cistern across the north vault. It is 80cm wide. There is a large stone against the wall A. on the north side.

9:30am The floor 3A. slopes down to the south and the dirt between it & the large stone against wall A is black in colour. Once cleaned down it became clear that this may be a drain.

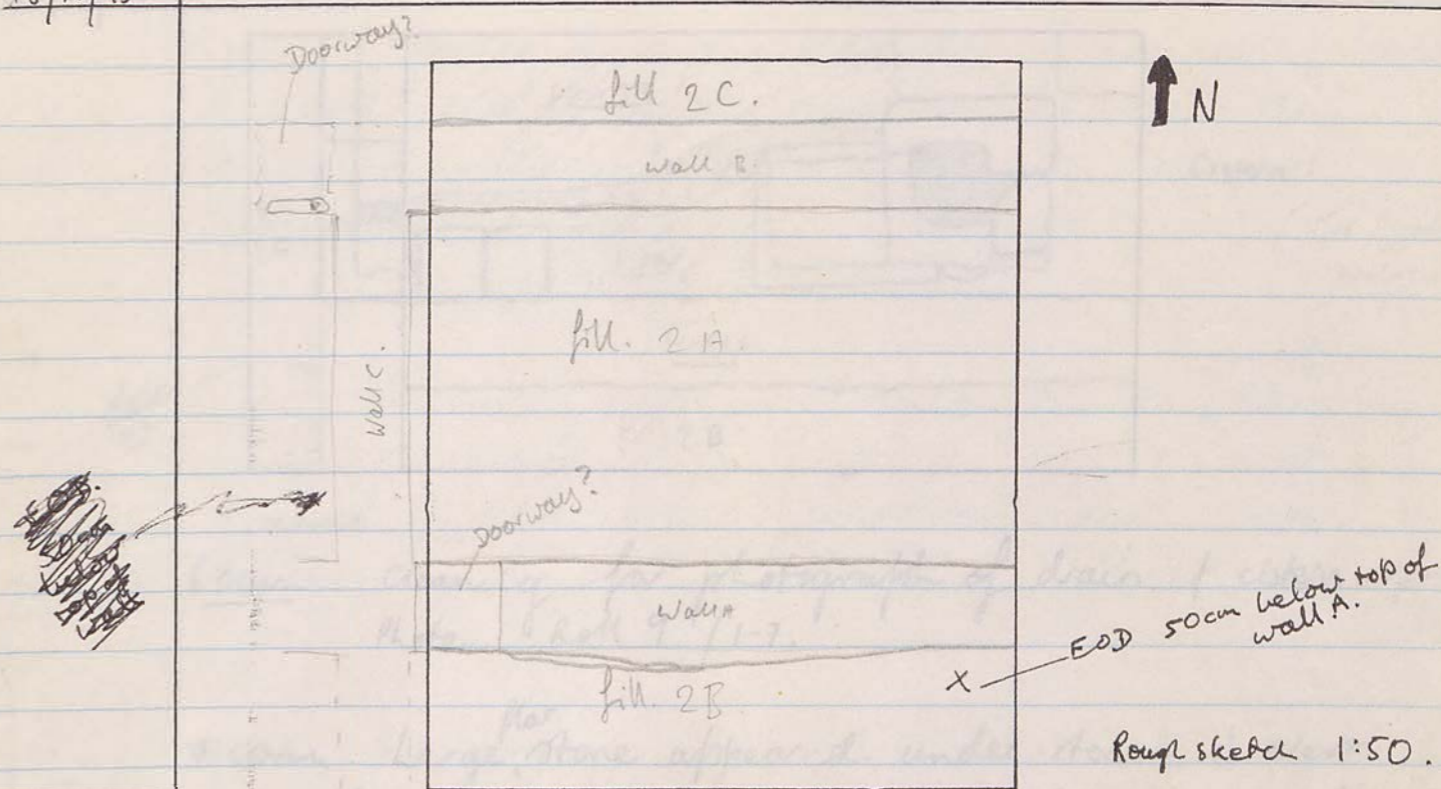
Removed dirt from area between rock & floor 3A. to find it was indeed a drain! It begins in the West wall from under a cut stone <sup>which lies</sup> against wall A and west of the large stones. It goes ~~between~~ around the large stones and across to the cistern.





JK DOM  
124/8  
15/10/95

124/8



Fill 2B

6.00am. Removing fill from south side of Wall A. = 2B. Contains fallen stones and dirt and some sherds. Wall A is leaning south. It is broken at its east end.

Walls A/B/C

8.30am. Wall A now clear at eastern end. 60cm wide. Some large stones have slid to the south - in the middle of the wall making it appear very wide here. I will leave these for now. Wall C is also 60cm wide. Wall B. also leans heavily toward the south. (top courses of stones flat) and appears very wide in the middle. This accounts for why I thought it did not line up with wall B in trench 123p. to the west. There are two breaks in the wall which may have been small doorways <sup>see plan.</sup>

Fill 2C

Removing fill from north side of wall B. = 2C. to define north face of wall. Northern face quite clear & straight. Fill contains fallen stones large & small, dirt & few sherds.

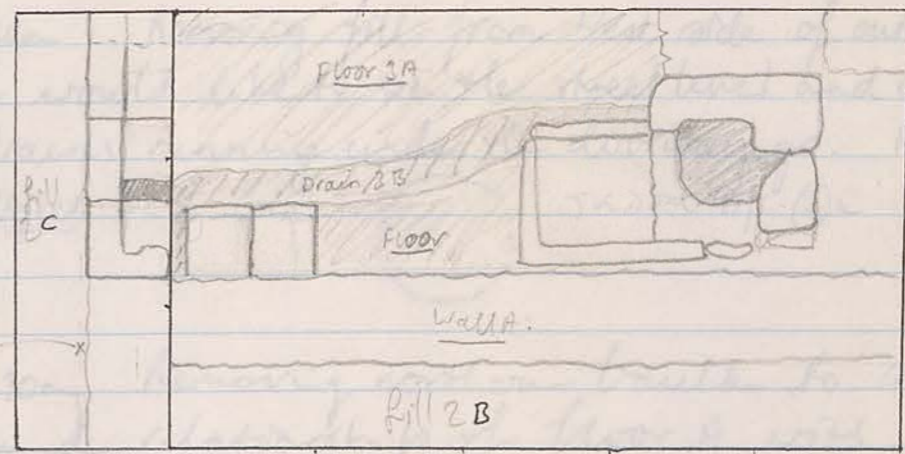
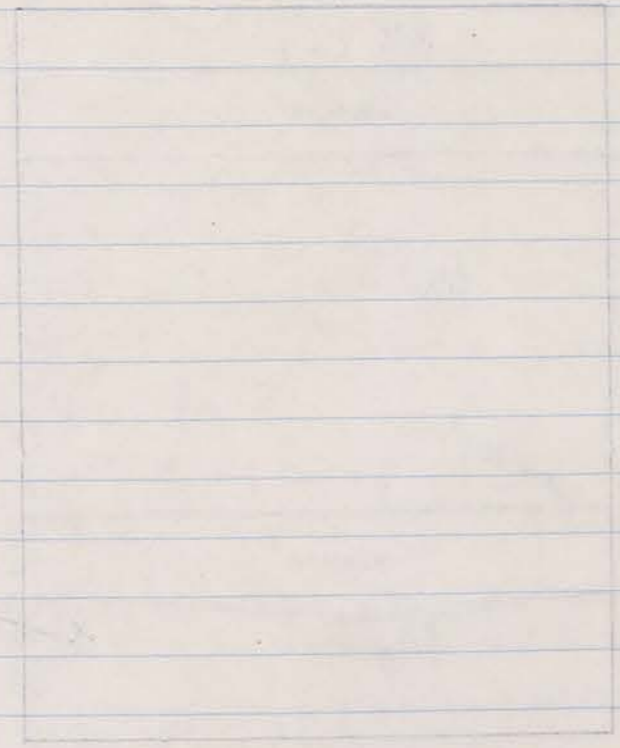
9.30am Continuing the same in 2C.

8/451

JK DOM  
8/451  
20/10/95

JK DOM  
98/3  
15/10/95

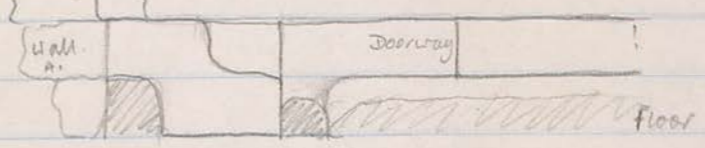
↑



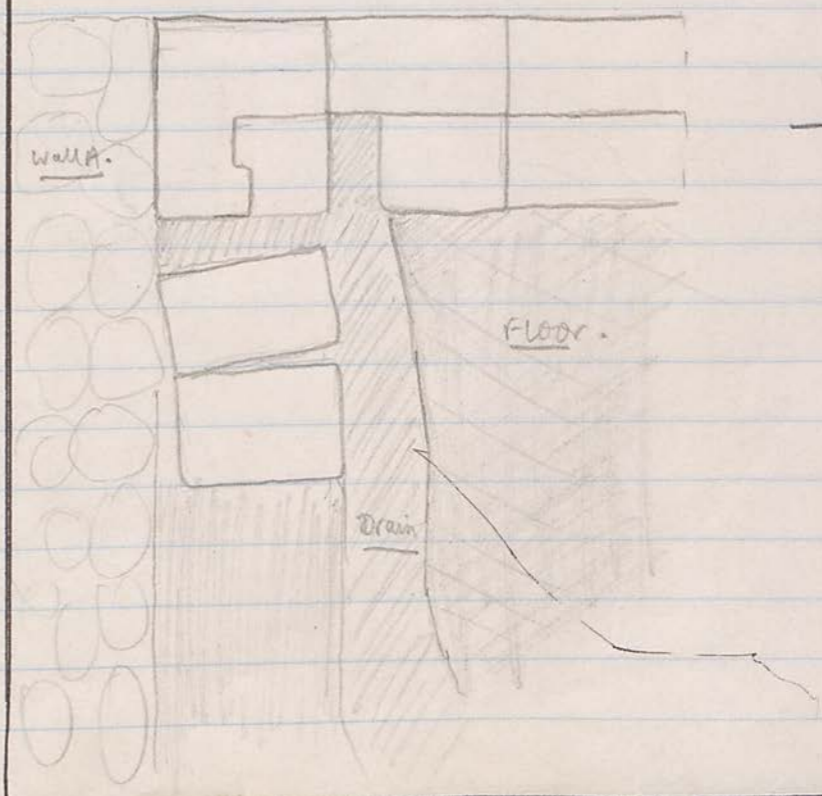
slice  
con.

6:00am. cleaning for photograph of drain & cistern.  
Photo. Roll 9 / 1-7.

7:00am. Large <sup>flat</sup> stone appeared under stones in West  
bault - possible doorway. Removed stones over doorway  
to reveal three large cut stones of threshold. There is  
a second drain running under the threshold beside the  
first stone (south end)



Section doorway  
looking West.  
Shows drains  
through stones



View  
Top of doorway  
& drain.

JKDOM  
98/3  
15/10/95.

(2)

fill (2)C

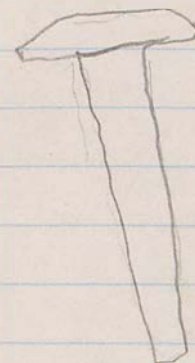
9:30am Removing fill from West side of outer wall & doorway  
I would like to see the street level and where the  
drains running under the doorway go. Rocks, dirt.  
Object. 32. Coin. JKDOM 98/3 (2)C.



10:30am Removing northern bank to see <sup>rest of</sup> doorway  
and relationship of floor A with the next  
trench where the floor is much lower.  
There may be a wall between. Object. 33 Nail. <sup>Western</sup>  
<sub>edge</sub>  
Balkh.

(2)C  
(3)C

11:00am. fill removed. Floor/street level reached.  
35cm below top of threshold.

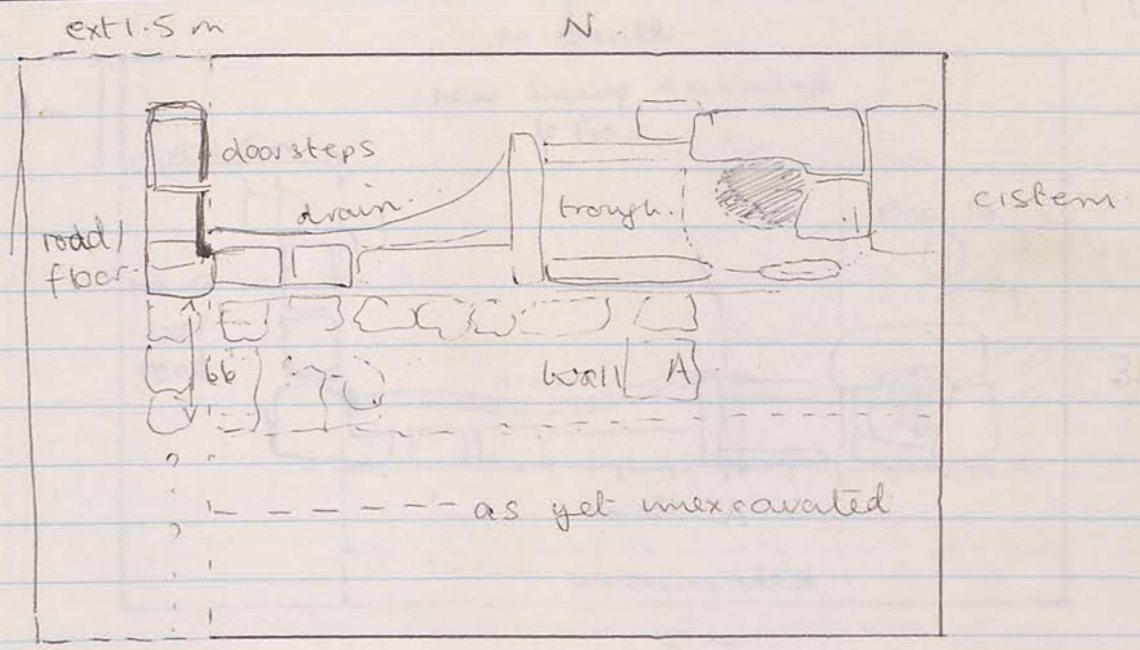




JL DOM  
98/3  
16/10/95.

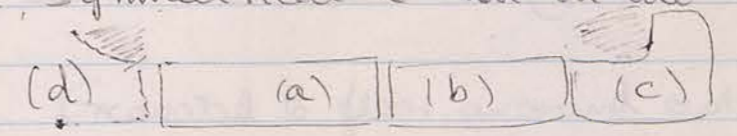
98/3 N. bck  
98/3

16/10/93



6.00 am. Removing northern baulk, starting with the extension (1.5 m) to the west, thus clarifying the doorway excavated yesterday.

7.00 am. Clearing tumble from a large door-stone, symmetrical to that on the south.



8.30 am. Now removing topsoil from remainder of N baulk. I do not think there is a wall in this baulk in spite of the slight difference in floor level between ours and that of trench to north (741) probably due to natural gradient.

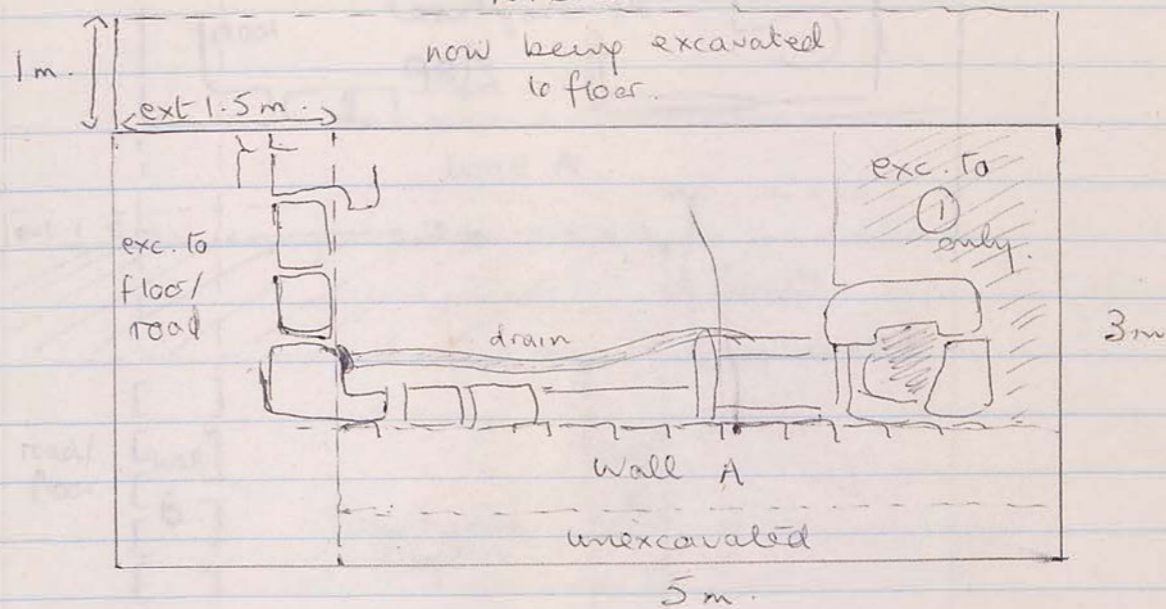
9.30 am. Definitely no wall in baulk. Still removing loose soil and large tumble from this locus.

10.30 am. Cleared to road in west, showing door stone (d) to be eroded but basically of same dimensions as (c).

98/3

17/10/95

N. Baulk



6.00 am. Clearing N. baulk evenly to floor of trench to north (76/1). When this is complete, it will be photographed.

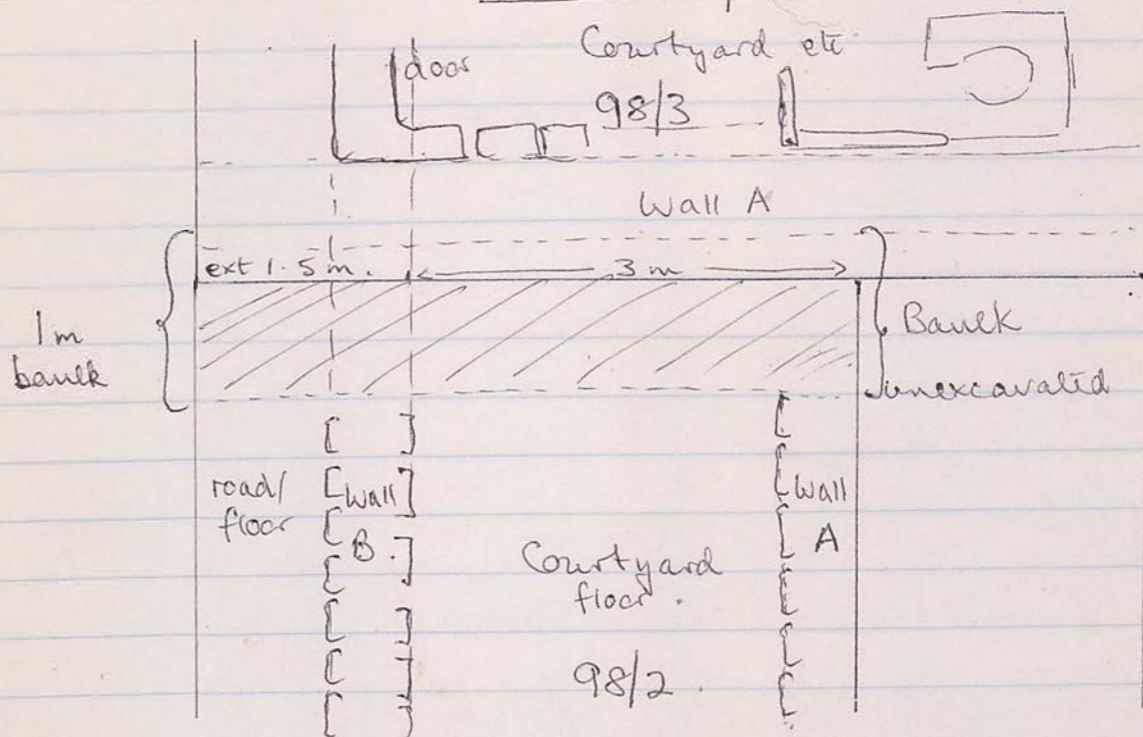
7.00 am. Photographed Roll ⑩ 21-23. Now excavating around cistern, which has only been excavated to ①.

8.30 am. Excavated to floor around cistern - only 5cm below stones surrounding cistern. Now excavating baulk to S of trench i.e. between 98/3 and 98/2.

9.30 am. Baulk being excavated at western end. Wall (perimeter west Wall B clarified as extending from trench to south (98/2).

Bank 98/2-3

18/10/95.



6.00 am. Today we will excavate the bank W/E up to the wall A in 98/2.

8.00 am. Still excavating the bank. Wall A in 98/3 (E/W) now nicely defined - south face well preserved.

9.30 am. Wall A in 98/2 (N/S) also cleared to one course.

10.00 am. Fragment of pottery with stamped decoration found at level (2) in centre of locus.

10.30 am. Also half a grinding stone (? limestone - more likely to be a post-hole?).

For 19/10/95 see HJ's book (last day)

