

**A4
NOTE BOOK**

No. 595

DOMESTIC AREA
MR CHRIS'S 1995
BASIN AREA



- 39. 4/10 + 5/10
- 40. 7/10 + 8/10
- 41. sketch plan 4
- 42.
- 43. 9/10 + 11/10
- 44. Plan + section 179/5 Extension
- 45. 12/10 + 14/10

DOMESTIC AREA :- 151 AND 179

INDEX

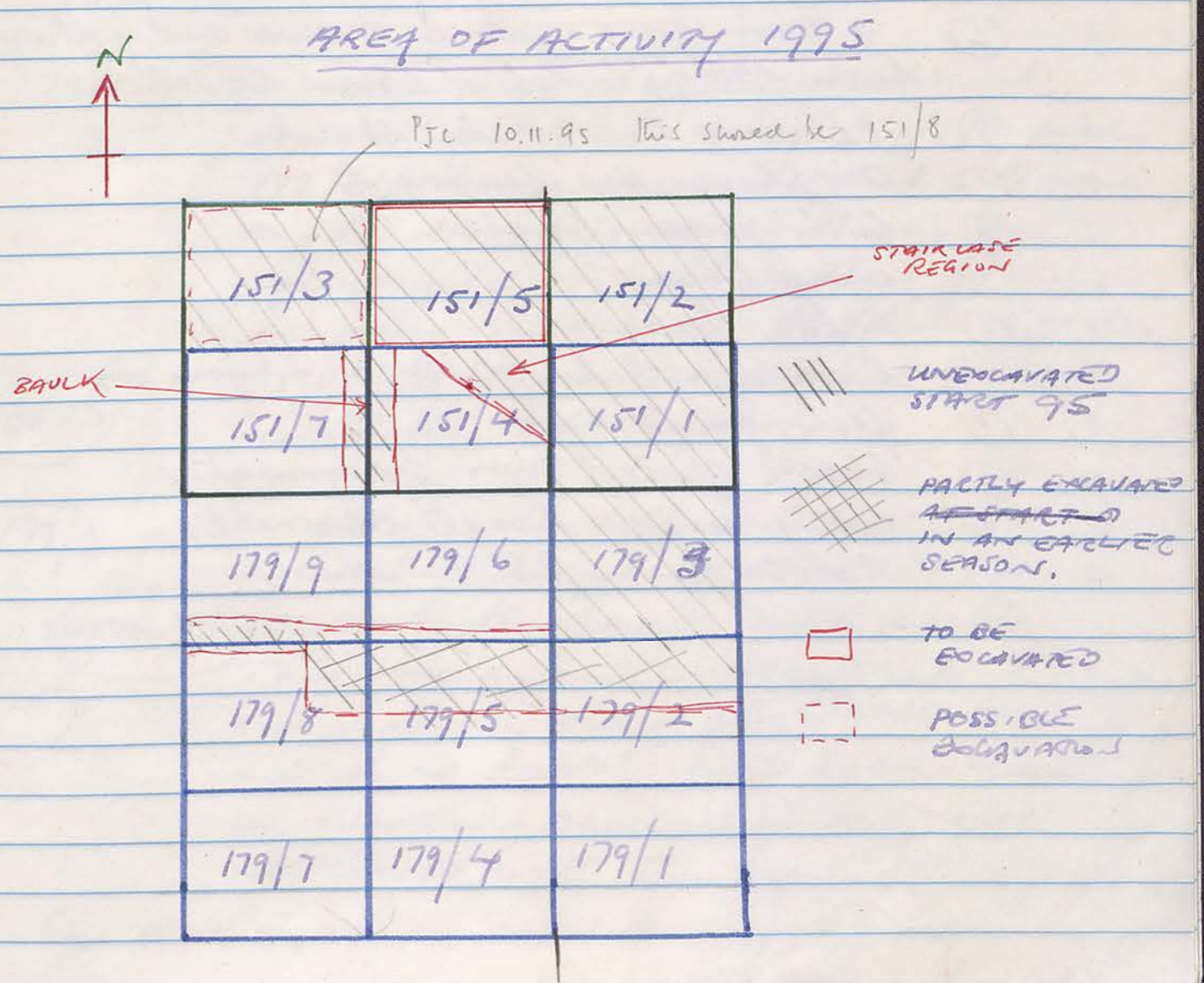
- 1-3 STRATEGY
- 3 AREA OF ACTIVITY. 151/5, 151/7, 151/4, 179/9, 8, 6, 5, 2.
- 4. FILM. RECORD OF PHOTOGRAPHS TAKEN.
- 5. TOP PLAN OF BASIN
- 6. POTTERY
- 7. 11/9, 12/9.
- 8. POTTERY
- 9. 13/9, 14/9
- 10. POTTERY
- 11. 16/9, 17/9
- 12. POTTERY. TOP VIEW STAIRCASE
- 13. DESCRIPTION OF STAIRCASE, SIDE VIEW.
- 14. POTTERY
- 15. 18/9, 19/9, 20/9.
- 16. POTTERY
- 17. 21/9
- 18. POTTERY
- 19. 23/9, 24/9
- 20-22 DOORWAY WALL A, B, C.
- 24-25 POTTERY
- 25. 26/9
- 26. AREA 179/5 - 179/25.
- 27. Basin south bank
- 28. 2
- 29. 27/9/95
- 30. sketch plan 1
- 31. 2/10/95 INTRODUCTION Comments
- 32. sketch plan 2.
- 35. 2/10/95
- 37. 3 + 4 /10
- 38. sketch plan 3

STRATEGY FOR 1995 SEASON.

- ① Remove the remaining portion of the baulk between 151/7 and 151/4 to completely investigate the drain running along the platform and to expose the north face of the basin.
- ② Finish excavation of staircase in 151/4 to determine relationship with the basin and east wall and north.
- ③ Excavate trench area 151/5 to try and locate the north wall presuming one is associated with the basin. E & W walls have been located in 1993 season.
- ④ Excavate the unfinished trenches 179/8, 179/5 to try and determine southern extremity of basin structure. These areas were partially worked on in 1991(?). Suggested baulk removed in its entirety as at present it runs over basin lip perhaps a wall is concealed therein. The large stones fallen in 179/8 ~~may be from a doorway leading from basin.~~

⑤ If time permits area in N-W of basin could be cleared to determine if wall(?) II continues to meet wall III is another staircase present? in N-W corner.

Hopefully the above activities will be able to reveal the relationship of the basin structure with the surrounding houses of the terrace.



179/9 - (2)

Large quantity of non diagnostic body sherds with few diagnostics.

- 1. (62) non diagnostic body sherds
- 2. (3) open mouthed bowl rims
- 3. (1) fragment of out-turned rim of cooking ware jar
- 4. (1) section of handle
- 5. (1) Amphora base.

68 SHERDS

179/9 - (3)

- 1. (54) body sherds
- 2. (6) 4 rim fragments and two body sherds from same bowl (bagged together) ^{echinus}
- 3. (8) echinus bowl rim sherds.
- 4. (1) amphora base fragment
- 5. (3) fish plate bases
- 6. (3) ring bases
- 7. (1) platter base
- 8. (4) hole mouthed jar rim fragments
- 9. (1) fish plate rim
- 10. (1) black glazed rim fragment
- 11. (1) barley sugar handle fragment
- 12. (1) Mortarium bowl rim.

84 SHERDS

DAY 1

11 SEPTEMBER 1995

179/9 - (1) Cleaning-up of eroded material from spoil heaps etc. filling bottom of trench. Also dumped field stones and negative matter. Dressed some from staircase ^{179/6?} had fallen - replaced in original position.

179/6 - (1) Similar work.

DAY 2

12 SEPTEMBER 1995

179/9 - (2) Removal of fallen material from baulks between 179/9 and 179/6. Severe erosion and collapse made stratigraphic division impossible so all pottery found in this material bagged together. A small bead was found mixed with this material.

BEAD

179/9 - (3) Below the fallen material was a flat ^{plak} cooking area (?) up against the basin north wall. This occurrence occurred in many places along this wall face. end is no doubt from later squatter or shepherd activities and not associated with the basin structure. Cannot be squatter. Initial foundation builder?

151/4 - (2) 2 BAGS 2ND BAG LISTED PAGE 12

1. (37) Non diagnostic body sherds
2. (3) echinus bowl rim fragments
3. (3) rims of open mouth jars
4. (2) fish plate rims
5. (2) fish plate bases
6. (2) amphora bases
7. (1) fruit bowl bases
8. (1) black glazed bowl rims
9. (2) rim fragments from a slender straight sided bowl
10. (1) mortarium rim

2 YAC

54 sherds

151/4 - 151/7 - (2) BAULK

3 AG 1

- (20) non diagnostic body sherds
- (3) handle fragments
- (4) echinus bowl rims
- (2) out turned rim fragments
- (7) rim base fragments
- (1) jug rim fragment with spout
- (1) small section of amphora toe

138 sherds

12 SEPTEMBER 1995 CONTINUED

151/4 - (1) Clean up around stairs and so bedrock of platform overlooking basin. Small cu fragment found here but no pottery

DAY 3 13 SEPTEMBER 1995

151/4 - 151/7 BAULK

Area 17

85 cm - 95 cm baulk above the bedrock overlooking the basin removed

151/4 - 151/7 - (1)

Area 17

Dark gray soil with abundant rubble removed. Very little pottery. approx 70 cm depth.

DAY 4

14 SEPTEMBER 1995

151/4 - 151/7 - (2)

17

Chocolate coloured soil approx 20 cm above bedrock. containing some pottery.

General cleanup of trench floor areas.

151/4 - (2)

17

Removal of soil between fallen stone from staircase and steps.

151/4 - 151/7 - (2) BAULK.

BAG 2

- (130) non diagnostic body sherds + 1/121
- (1) impressed body sherd.
 - (2) amphora sherd
 - (4) echinus bowl rim
 - (3) rim base fragments
 - (1) mortarium rim
 - (1) oss. sherd bowl rim and body fragments
 - (1) part of plate base
 - (2) oss. sherd bowl rim
 - (5) assorted rim fragments
 - (1) handle fragments
 - (1) handle and rim fragments.

4 YAC

DAY 5.

SATURDAY 16 SEPTEMBER

Clear large piles of stone on north side of basin. Clear surface stone from area in preparation for marking out trench 151/5.

Sweep and clean out entire basin ready for photograph next day.

DAY 6.

SUNDAY 17 SEPTEMBER

Sweep up dust etc. photographs taken of views of ossiferous and basin.

151/5 - (1)

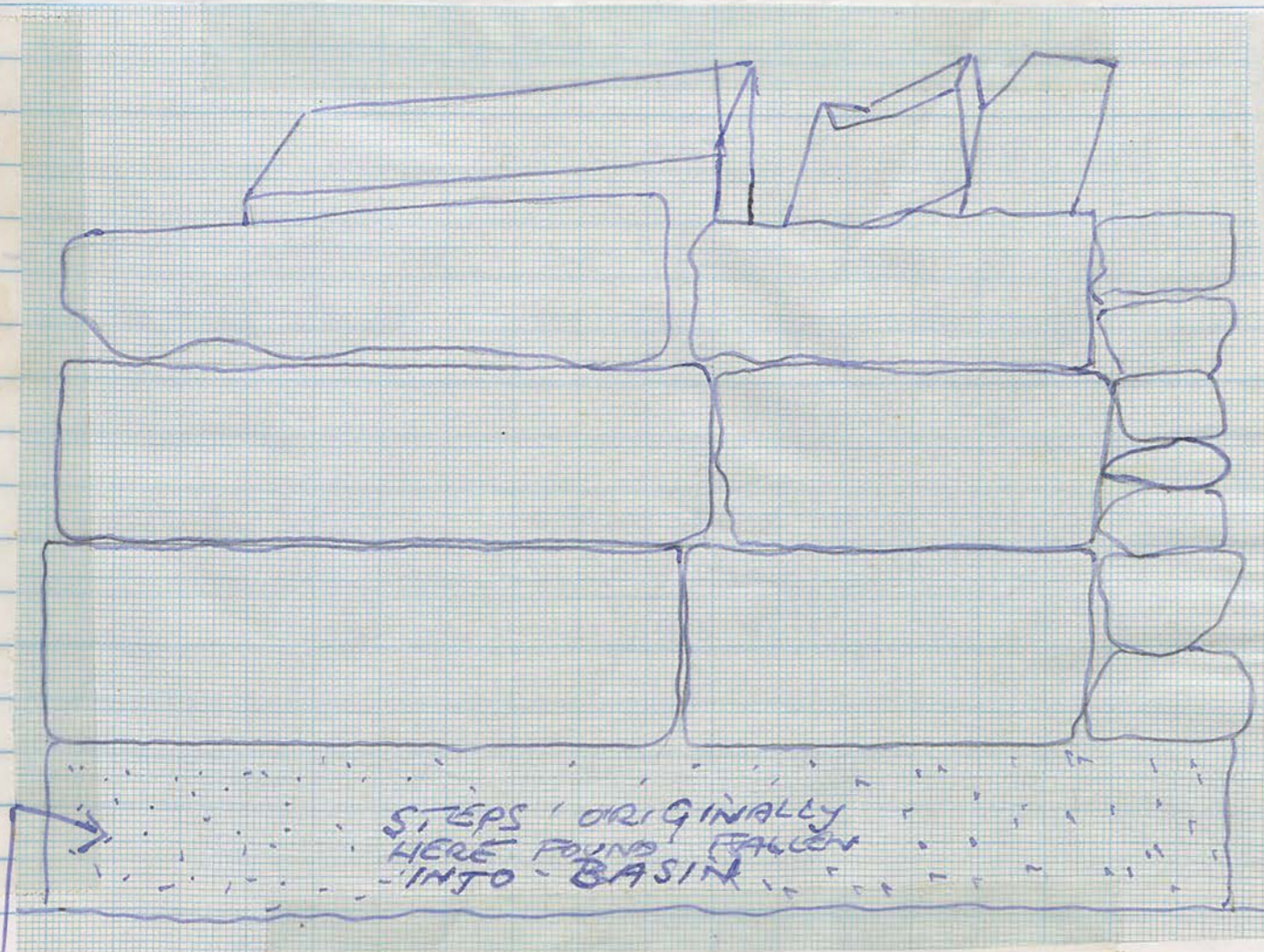
Soil and vegetation cleared from between fallen field stones so a level of ~ 10 cm.

151/4 - ②

SECOND BAG

- ④ non-diagnostic body sherds
- ① echinus bowl rim fragment
- ① ring base fragment
- ① rim fragments of out-turned bowl
- ① handle fragments

STAIRCASE
FRONT VIEW 1:10



HARD PACKED SOIL.

STAIRCASE

The surviving section of the staircase is fairly well preserved. Four courses of steps remain in situ from the original ^{SIX OR} FIVE(?). The two large stones making up the bottom course had fallen into the basin and those possibly making up the top course had fallen to the west side of the staircase. Perhaps this second lot of fallen stones were part of the doorway leading from the steps.

151/5 - ④

With removal of rubble and soil beneath will show material levels ④ is identical to ③ rubble and soil containing small bones

151/5 - (3), (4) & (5)

SAME
STRATTA BELOW
SURFACE STONES

151/5 - (3)

- (10) non-diagnostic body sherds.
- (2) fish plate rim fragments.
- (1) amphora base.
- (1) ring base.
- (1) handle with rim.

151/5 - (4)

- (150) approx non-diagnostic body sherds
- (2) small pieces of red-slipped ware
- (1) oval-shaped jug rim
- (1) fish-plate rim
- (2) fragmentary rim bases
- (1) jug rim
- (1) echinus bowl rim fragment
- (1) handle

DAY 7

MONDAY
18TH SEPTEMBER

151/5 - (2)

Finished surface preparation.
2 photographs taken of prepared surface.
Commenced to take out fallen
stones.

DAY 8

TUESDAY
19TH SEPTEMBER

151/5 - (3)

Removed layer of soil below fallen
stones. Possible wall on east side
continuation of wall I of basin.

DAY 9

WEDNESDAY
20TH SEPTEMBER.

151/5 - (4)

Further removal of rubble and soil
homogeneous with above material.
Locus (4) is identical to (3)
rubbly eroded soil containing
small stones.

10/5 - (3), (4), (5)

151/5 - (4)

- (70) non-diagnostic figurine body sherds.
- (1) small incised fragments - possibly lamp or figurine.
- (3) red slipped body sherds.
- (1) lamp spout.
- (1) echinus bowl rim.
- (2) ~~sh~~ handle fragments.
- (1) rim base fragment.
- (5) two decorated jar rims.
- (1) rim base fragment.

DAY 10

THURSDAY 21ST SEPTEMBER

151/5 - (5)

Continued removal of soil and rubble. No distinct phases seen yet. To the north a wall was exposed exactly in line with north bank. Likewise it is probable that a wall lies on the east bank in line with wall I of the basin. Still not clear of exact relationship between these walls and source.

Day Locus (3) = (4) = (5) - 2/21

Summary 21/9/55
 Developed site on the north bank of the basin. The plan shows a wall (A) and a wall (B) and east bank (A). Wall A was on long from top of slope to fully exposed on north bank. It is possible that wall I of the basin was the same as wall A. A doorway survives in the wall. The plan also shows a wall (B) and east bank (A). Wall B was on long from top of slope to fully exposed on north bank. It is possible that wall I of the basin was the same as wall B. A doorway survives in the wall. The plan also shows a wall (C) and east bank (A). Wall C was on long from top of slope to fully exposed on north bank. It is possible that wall I of the basin was the same as wall C. A doorway survives in the wall.

151/5 - (6)

- 95 non-diagnostic body sherds
- ① fish plate rim fragment
 - ① straight sided bowl rim
 - ④ eckinus bowl rims
 - ① lamp fragment.
 - ② handle fragments
 - ① out turned bowl rim
 - ① ring base fragment
 - ① mortarium rim fragment
 - ③ jug rim fragments.

151/5 - (8)

- 100 non-diagnostic body sherds.
- ① mortarium rim
 - ① strap handle
 - ③ bowl rims
 - ① fish plate fragment

DAY 11

SATURDAY 23/9/95

151/5 - (6)

Continued clearing revealed a floor locus ⑦. All material in locus 6 ~~was~~ approx 10 cm finer brown soil cleared level to floor.

LOCUS ⑥ = 10 cm brown soil above floor.

LOCUS ⑦ = hard packed floor.

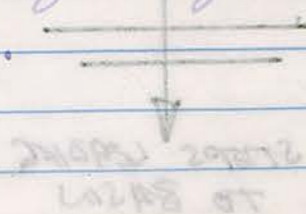
DAY 12

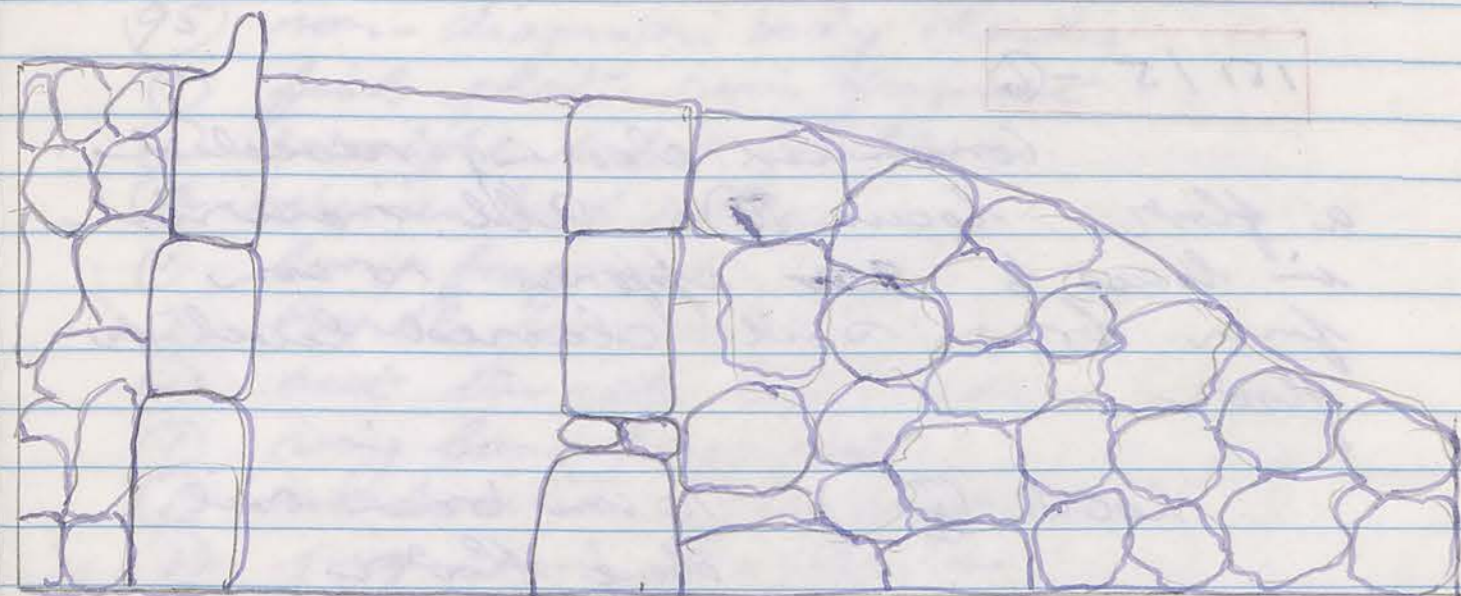
SUNDAY 24/9/95

Clear walls ready for photograph sweep floor and walls. Two photographs taken. Two walls have been revealed lying exactly along the limits of the north bank wall B and east bank A.

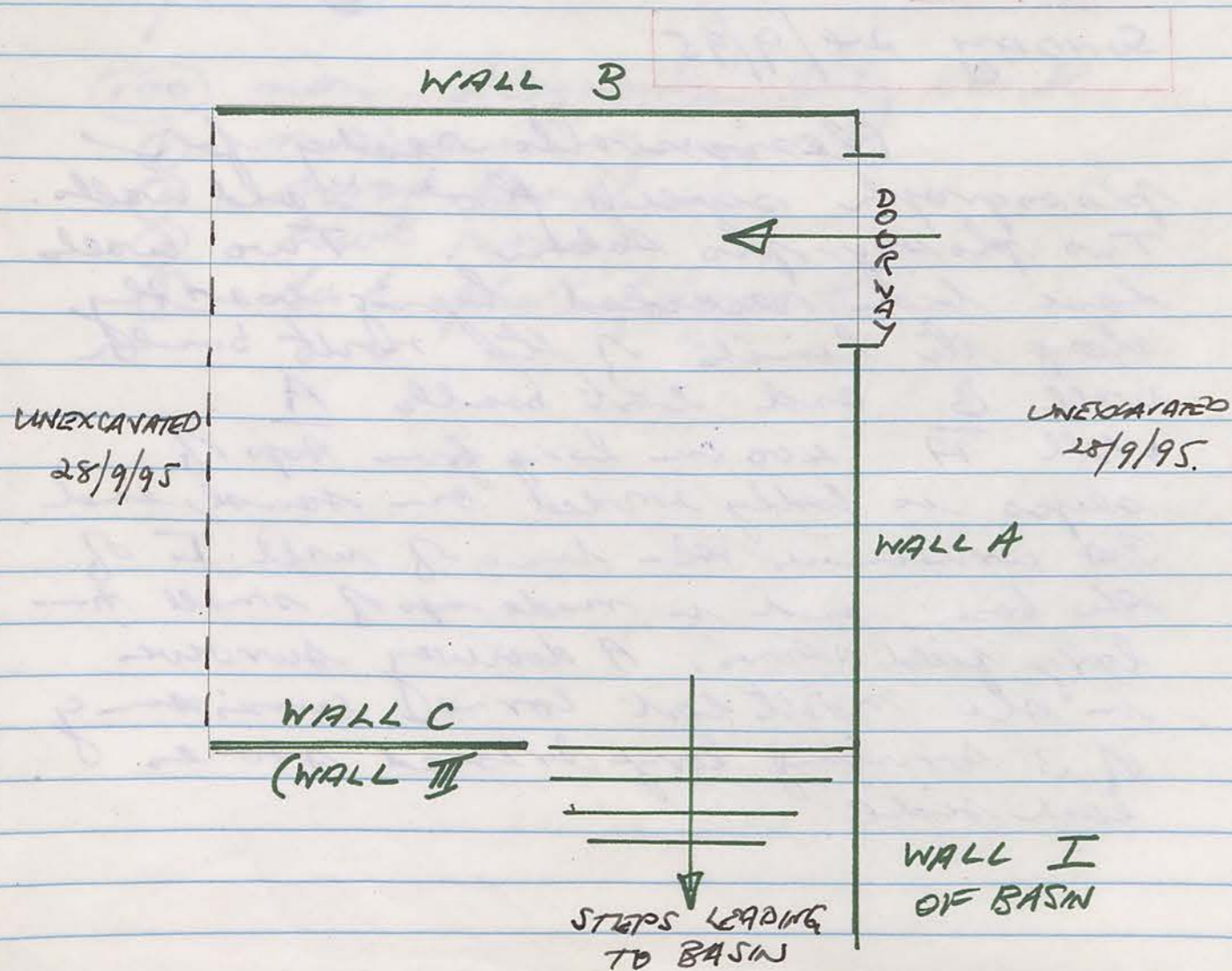
Wall A 400 cm long from top of steps is badly eroded on south end. It contains the line of wall I of the basin and is made up of small to large field stones. A doorway survives in the north east corner consisting of 3 surviving large dressed stones each side.

WALL I
OF BASIN





ROUGH SKETCH.
WALL A WITH DOORWAY 1:20



The doorway entrance is 85 cm wide the outside dimension 150 cm at its widest part.

North Wall B is made in the main from smaller stones, with fewer large field stones. In the extreme left there is a large dressed block which may be part of a doorway or a more substantial construction of the wall.

The floor of this room overlooking the basin contained no features. An ash area near the staircase entrance contained no artifacts, bones etc and may be a layer under the remains of the burnt door.

South Wall C (?) next to steps. Evidence is inconclusive due to the heavy erosion but a few stones appear to lie in-situ from ~~the bottom course~~ a remaining wall must be present in this position which excavation should confirm. (p. 23)

Wall C was revealed a 75 cm thick structure which presumably stretched right across the north side of the basin.

151/5 - (9)

- ≈ 150 non diagnostic body sherds
- (3) broken & small ring base fragments
- (1) mortarum rim
- (3) jug rims
- (1) echinus bowl rim

DAY 13

MONDAY 25 JULY

151/5 - (8) Remove small depths of southern bank and field stones conserved. There is

151/5 - (9) To investigate the likely hood of a retaining wall north of the basin next to the stairs a small section was dug at the south end of the room next to the stair case measuring ~~the~~ retaining wall C found preserved to a height of 80 cm. Its thickness determined by a small trench was 75 cm

Since no wall at right angles is visible in the N Bank it may be assumed that wall C runs right across the North extreme of the basin meeting up with wall II in the Northwest corner. The possibility a staircase cannot be ruled out for sure but there is no ~~firm~~ evidence for this above ground.

151/5 - ⑨

- ①50 non-diagnostic body sherds
- ③ handle fragments
- ① lamp spout
- ① black glazed echinus bowl rim
- ① out-turned jug rim

DAY 14.

TUESDAY 26TH JULY SEPT?

Finish cleanup of small section of wall C exposed ready for photo-graphy and measurement.

179/8

Clear up eroded material next to south side of bank in preparation to remove bank.

To investigate the south extreme of the basin and to see if doors connect it to the rooms there. ~~The~~ The bank will be removed and all incompletely excavated material on 179/5/ & 179/2 will be finished. Is there a wall in the bank? The presence of two large stones fallen in 179/8 may be from a door.

179/8 - ①

is the fallen and eroded material from the bank and surroundings.

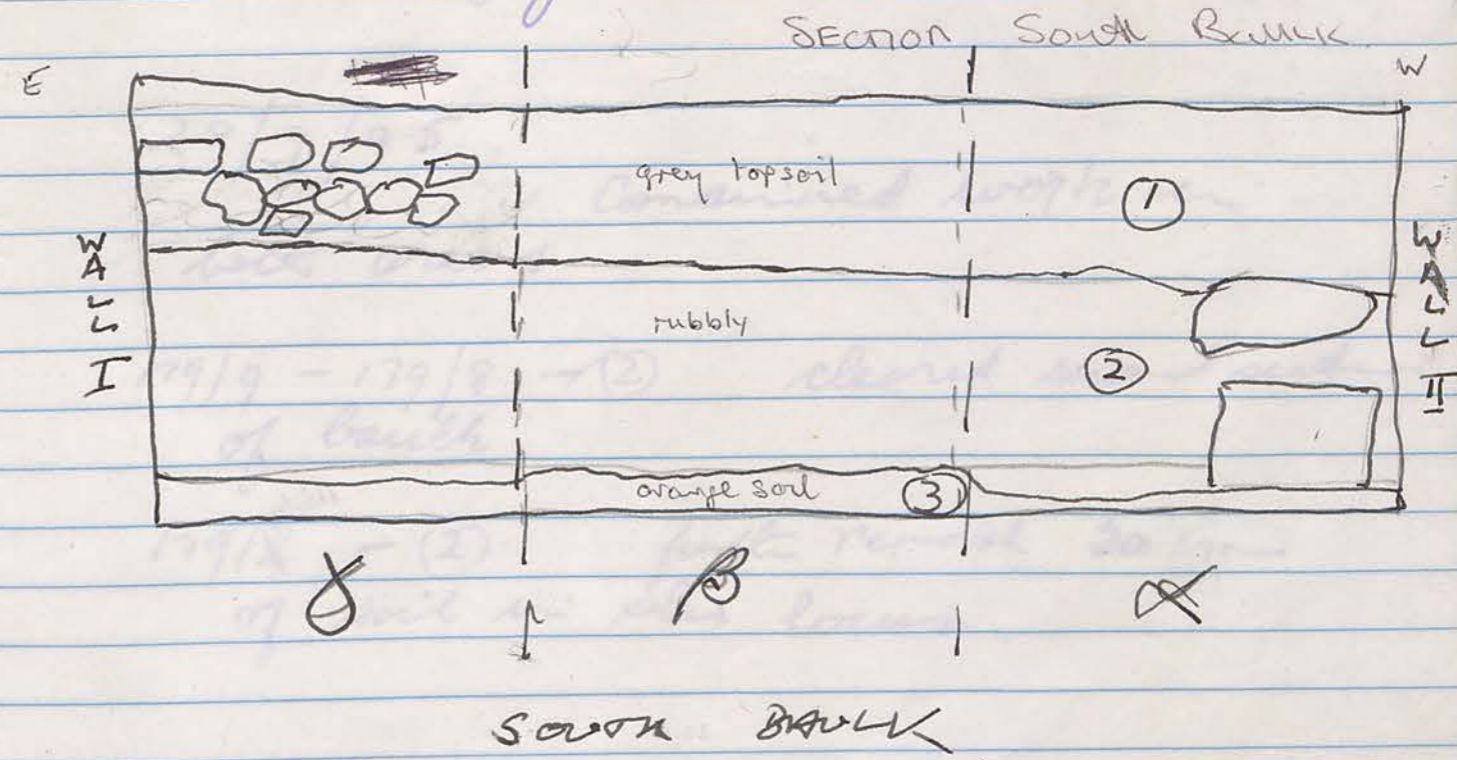
STRATEGY FOR CLEARING
179/5 AND 179/2

8/17/1

STRATEGY FOR REMOVING BULK
SOUTH OF BASIN

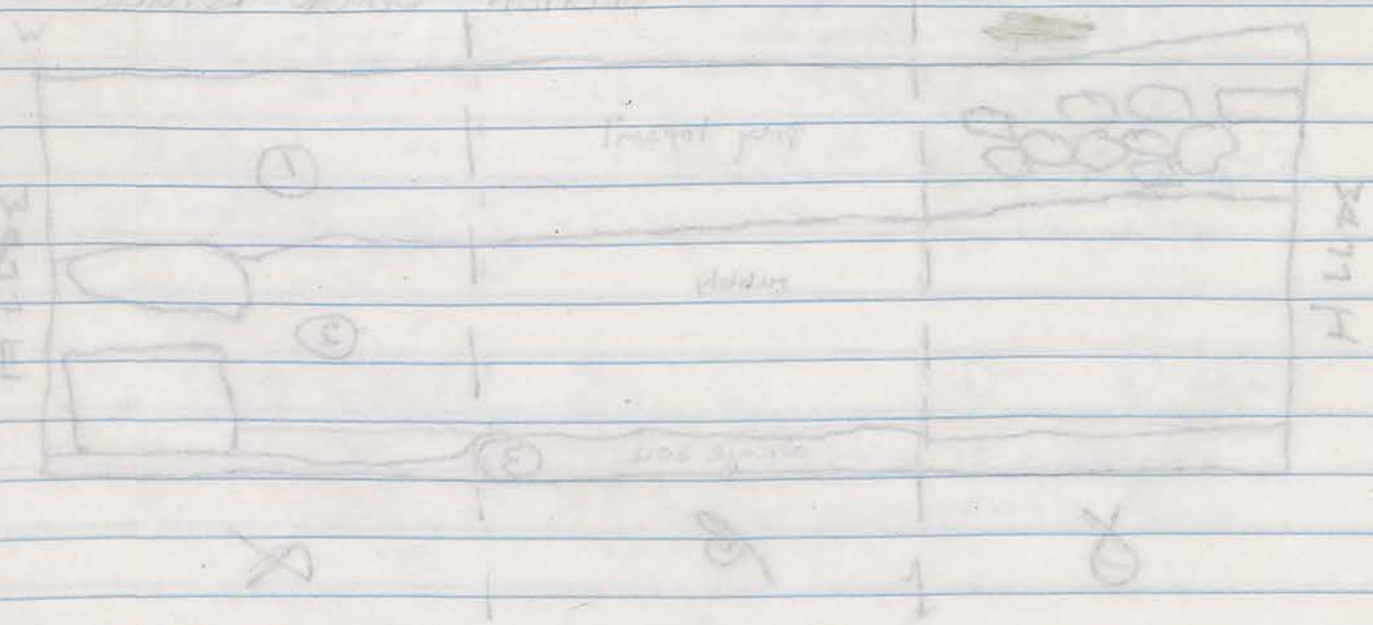
One group of 4 workers will clear area between south wall and north baulk in 179/2. whilst the other group will commence to bring down the basin baulk.

The long stretch of baulk will be removed in three sections (α, β, γ) starting at the west where it is not damaged and eroded. There are three discernible strata ① Fine Grey coloured top soil little pebbles ② rubble matrix ③ thin layer of orange soil above first level = bank



Sketch

[Faint, mostly illegible handwritten notes on page 28, possibly describing a site or survey area.]



2000 BANK

27/9/95

179/9 - 179/8 - ① Bank top section removed.

179/~~8~~^{5/8} - ① The top section of soil removed in this section after clearing vegetation and eroded material.

Some work was commenced in this area in an earlier season (1991?) revealing the extension of the wall I of the basin but ~~only~~ only 20 cm or so was excavated.

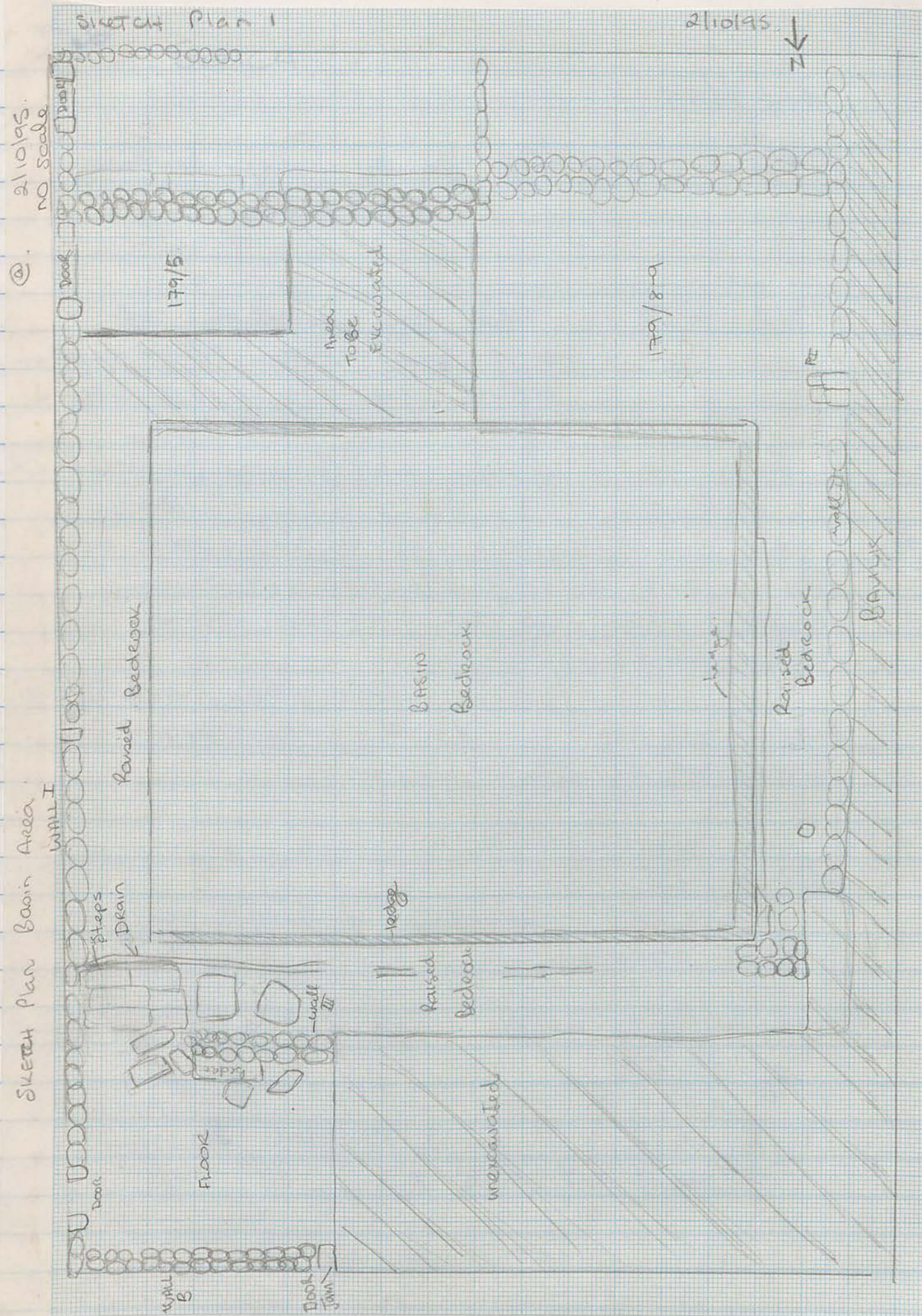
all of this area will be removed to reveal the southern extent of the basin.

28/9/95

Continued work in both areas.

179/9 - 179/8 - ② cleared second section of bank.

179/~~8~~^{5/8} - ② further removal 50 cm of soil in this locus.



2ND OCTOBER

31

Trenches 179/8-9 and 179/5 are continued after the mid-season break. Chris has gone back to Australia - Karen Herdeix has taken over this area. Note Chris refers previously to 179/2 but in fact it is (179/5) that is being excavated.

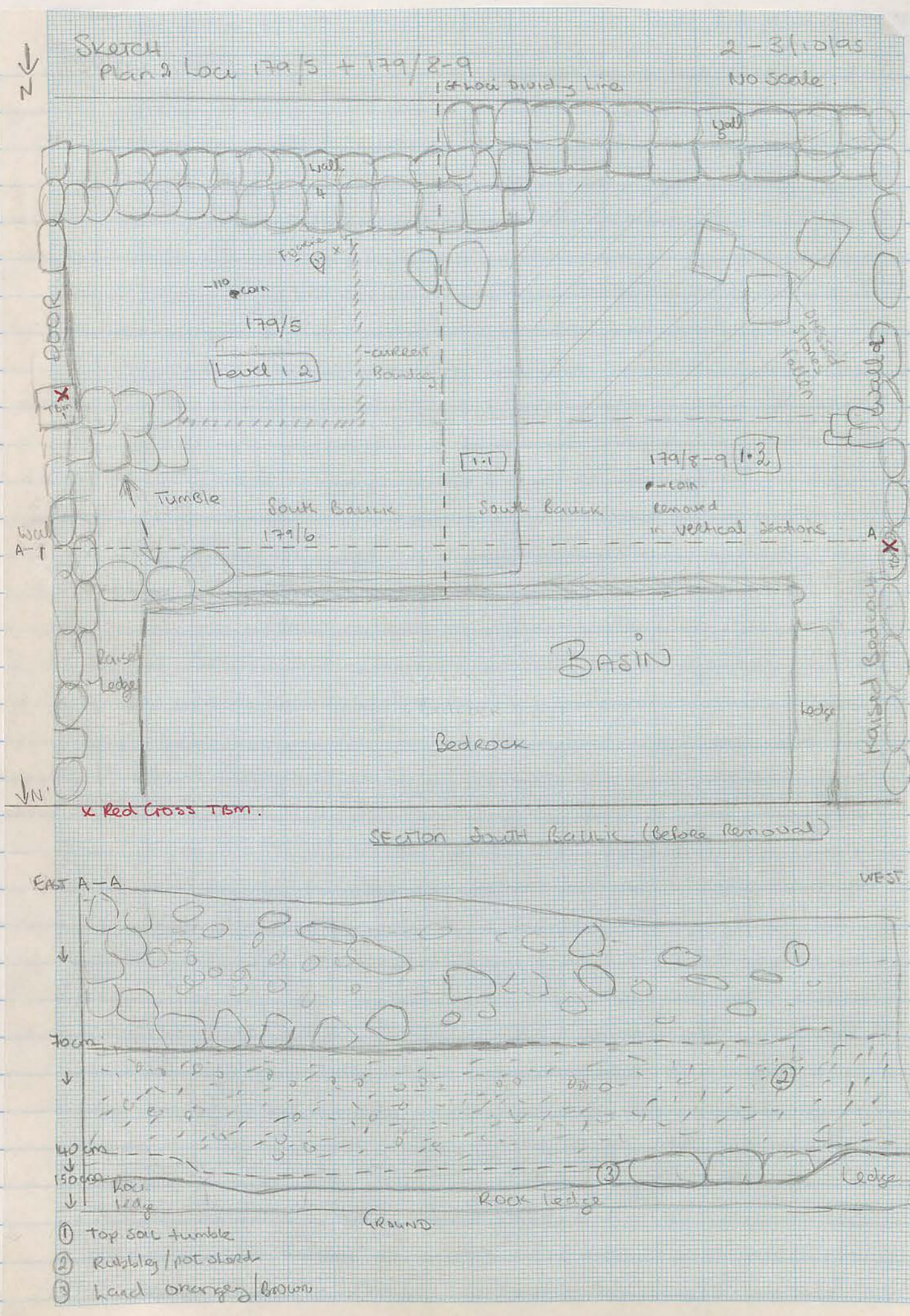
My recording is slightly different than Chris's, but I will keep to his concepts in general. I record in the locus / level system explained in a book which records Trenches 178/8+149/3. Basically a locus is horizontal, divided by features in the trench (e.g. walls) and a level is a vertical strata within the locus. The levels are differentiated by such variables as different soil, presence / absence of pottery, ash etc. All recovered items are kept separate in accord with levels.

Two areas will continue to be excavated, 179/8-9 and 179/5. See sketch plan opposite of all areas in relationship to each other.

179/8-9 is the removal of the south bank of the large basin. I have continued to remove it in horizontal spits as Chris determined (see page 27 for sketch section).

179/5 is the area just south / east of the south bank. A small trench originally started in 1991¹⁹⁸⁹ which exposes a E/W wall which may be the southern extreme of the Basin area.

I have placed a few points (Temporary Bench Marks (TBM's)) in each trench to take levels off. See sketch plan 2 for location.



2.10.1995 (Sketch Plan 2) Monday

179/2 - Continued digging in this small trench after mid-season break. I have assumed top soil dates off as level 1. There is only one locus here.

I have started today with Locus / level 1.2 therefore, in accordance with the system I employ - Take off approx 50cm of soft grey/brown soil. Very few rocks or stones, some pottery - bone.

A small coin found approx -110 cm below surface - amongst soil. Also some small fragments of plaster with monochrome red paint.

179/8-9 - Continuing to remove the south bank in the same manner Chris started. This shows three distinctive strata in the bank:
 1. Top soil - quite sterile
 2. Rubble & pottery filled
 3. Hard packed orangey.
 Removing this in a west-east direction.

Today took off a large section of 1 & 2 - only pottery found in 2. It's very slow work.

Found locus level 1.1 + 1.2.

179/6
 For Excavation
 South Bank

POTTERY

3/10/95

Peter is undertaking the sorting of pottery and he will keep this as a record.

3.10.95 (see plan 2) TUESDAY

179/5 - Continued to dig 50cm along surface of this trench until its western extension has been reached. We will then go further into the loci. Still 1.2

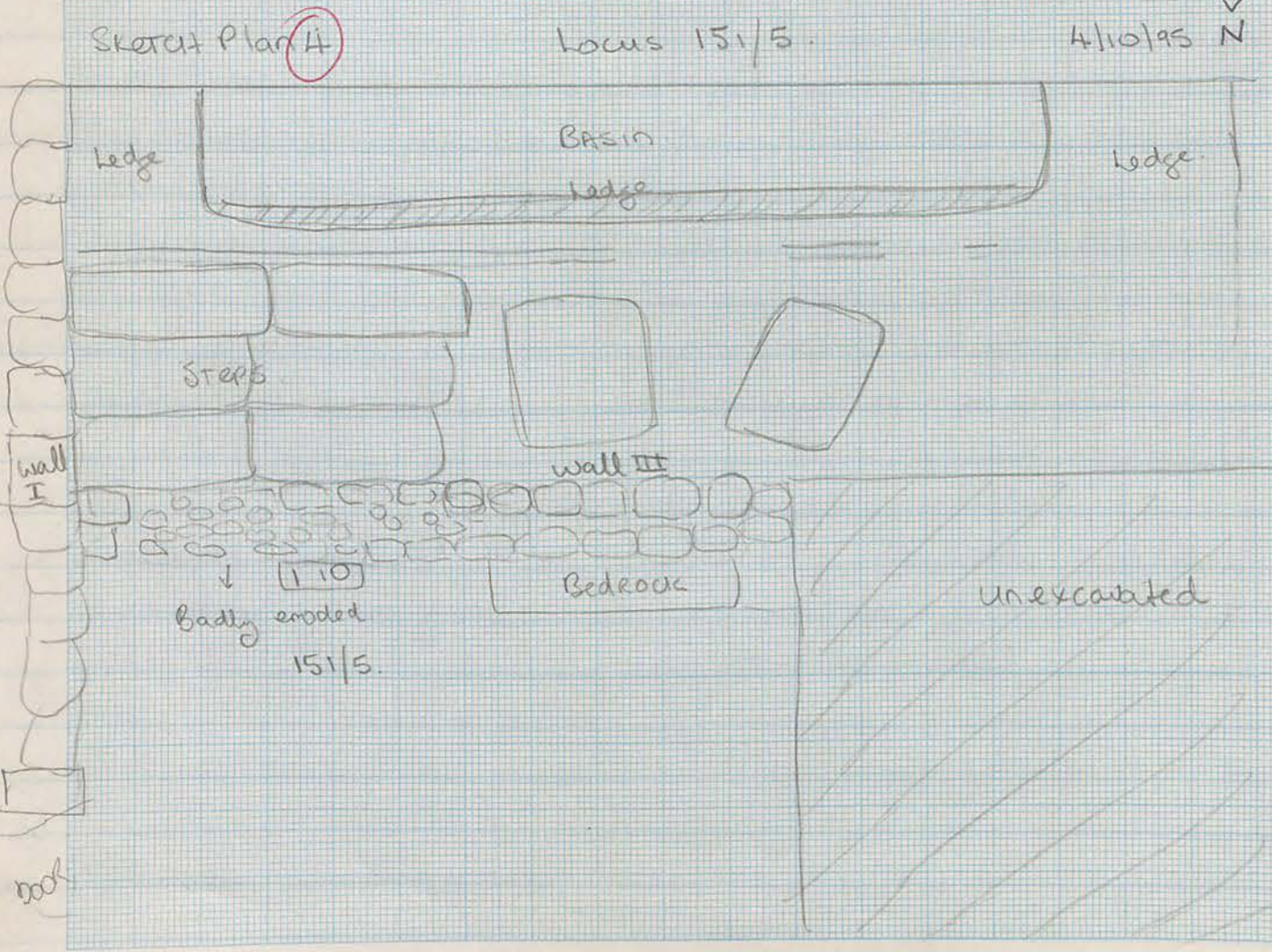
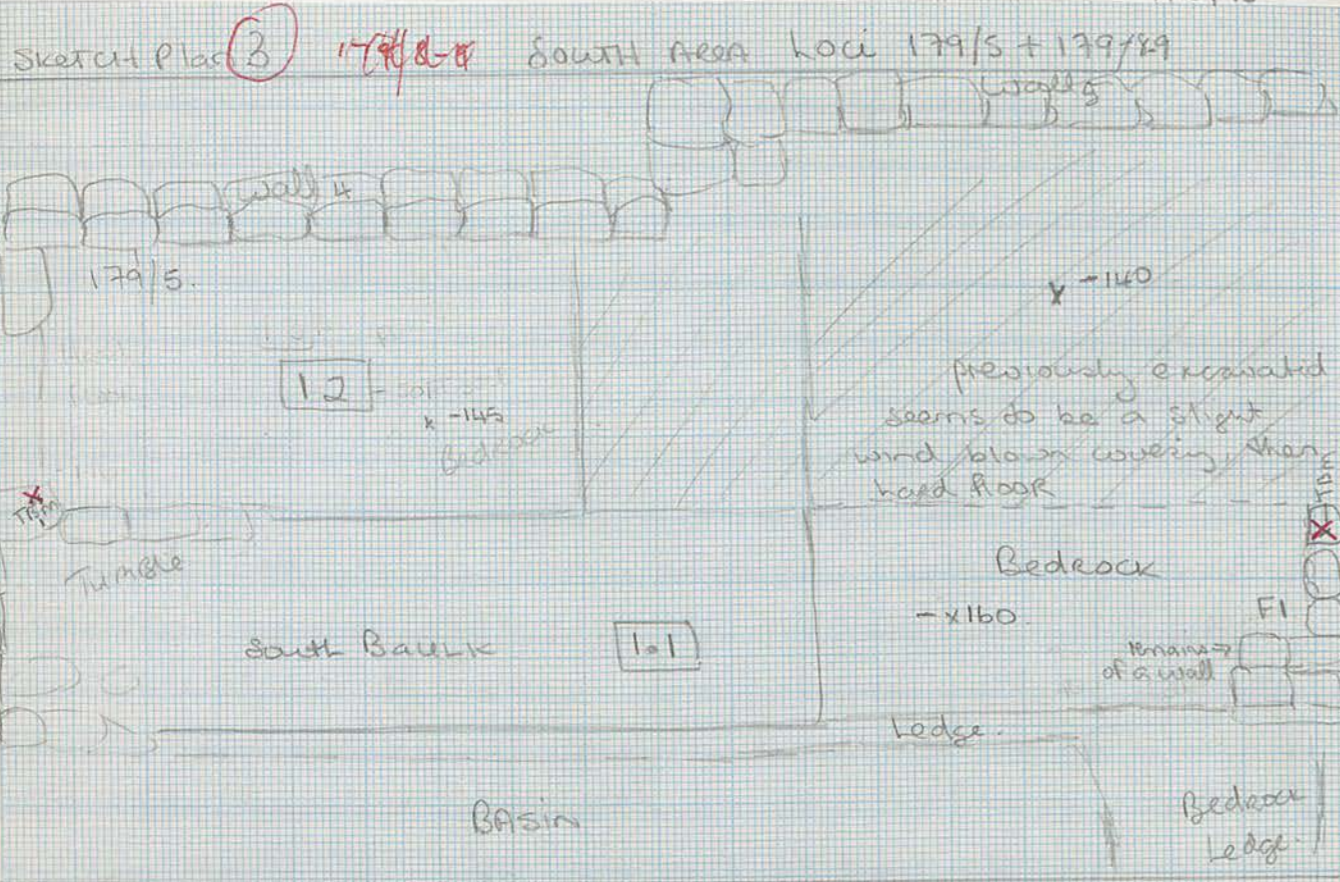
179/8-9 - Continued removing the last section (ground) of the bank in this western part. The soil is orangey and quite hard just above the level. The ledge against the basin is very distinct here and about 30cm high. It slopes away sharply south with the normal contour of the jebel. Have taken the removal of soil about 1 meter back south into 179/8 just to expose jebel floor. A small coin found very near the bedrock. Today locus level 1.3 And VII 125-121
95.254

4.10.95 WEDNESDAY

179/8-9 - Continuing in this area down to jebel. Near the ~~east~~ ^{west} wall (2) the soil is quite hard orangey/brown - a little thicker as the jebel dips down. I will look at the stratigraphy of this surface when I move back into the lower trench later on. Continued as 1.3. A small stone feature is against the (east) ^{west} bank?? west?

179/5

Continuing also to remove the last of the 50cm tracing west as 1.2. The jebel/bedrock is apparent - a small figure of a lady found just above surface. Continued over page. 95.236



4.10.95 WEDNESDAY

15/5 6.00 (see Plan 4)

Decided to extend Chris' excavation in the southern extent of the trench. The purpose is to expose more of the small wall (wall C or III) on the southern extent of trench. I wanted to check its relationship to the steps and/or the eastern wall. I was surprised with a slow return to work.

9.00 By breakfast it is clear this wall extended to wall 1, the top courses beveled away. This effectively blocks the access to the steps and causes some problems with the relationship of 15/5 to the Basin.

179/8-9 9.30 (see plan 3)

Continued removing the south bank. Now back to the top level 1.1. Again the process is very slow. The 'B' Team aren't all that fixed on working fast and if I'm not there they slack off. Chris has closed them to death. There appears to be the remains of an E/W wall p. in wall II. Also on the floor/bedrock are several stones which confirm this. I have called this feature (FI).

5.10.95. Thursday

179/5 - Continuing to remove soft soil, ~~some~~ the bedrock is evident in the west part of the trench. But in the east a hard packed floor seems to be coming up 1.2. for soft soil.

179/8-9. Continuing on level 1.1. Turma seems to be working better today. He has got use to the Kazma and is working a little faster with it.

7.10.95. (see plan 4). SATURDAY.

179/5 At the end of Thursday a floor (hard packed limestone) was evident, although it was quite thin - cracked in the west.

Locus 1.3 is the partial removal of this floor - have left some on the west as a step. The level of this floor is ~ 116 cm below surface taken from TBM 1. Also noted that the most southern wall in this excavation area does not reach bedrock - is pedestalled about 50cm above the remaining floor. (See sketch pg 42)

179/8-9 The last 5m of 1.1 removed this morning changed to 1.2 mid morning. Now into rubble, pottery level. Nothing remarkable came out, except a small frag of a lamp. (lost? no inv. no.)

8.10.95. (see plan 4). SUNDAY

179/5 + 179/8-9

Completed both these areas by mid morning. The ledge continues in 179/8-9 and bedrock reached in 179/5.

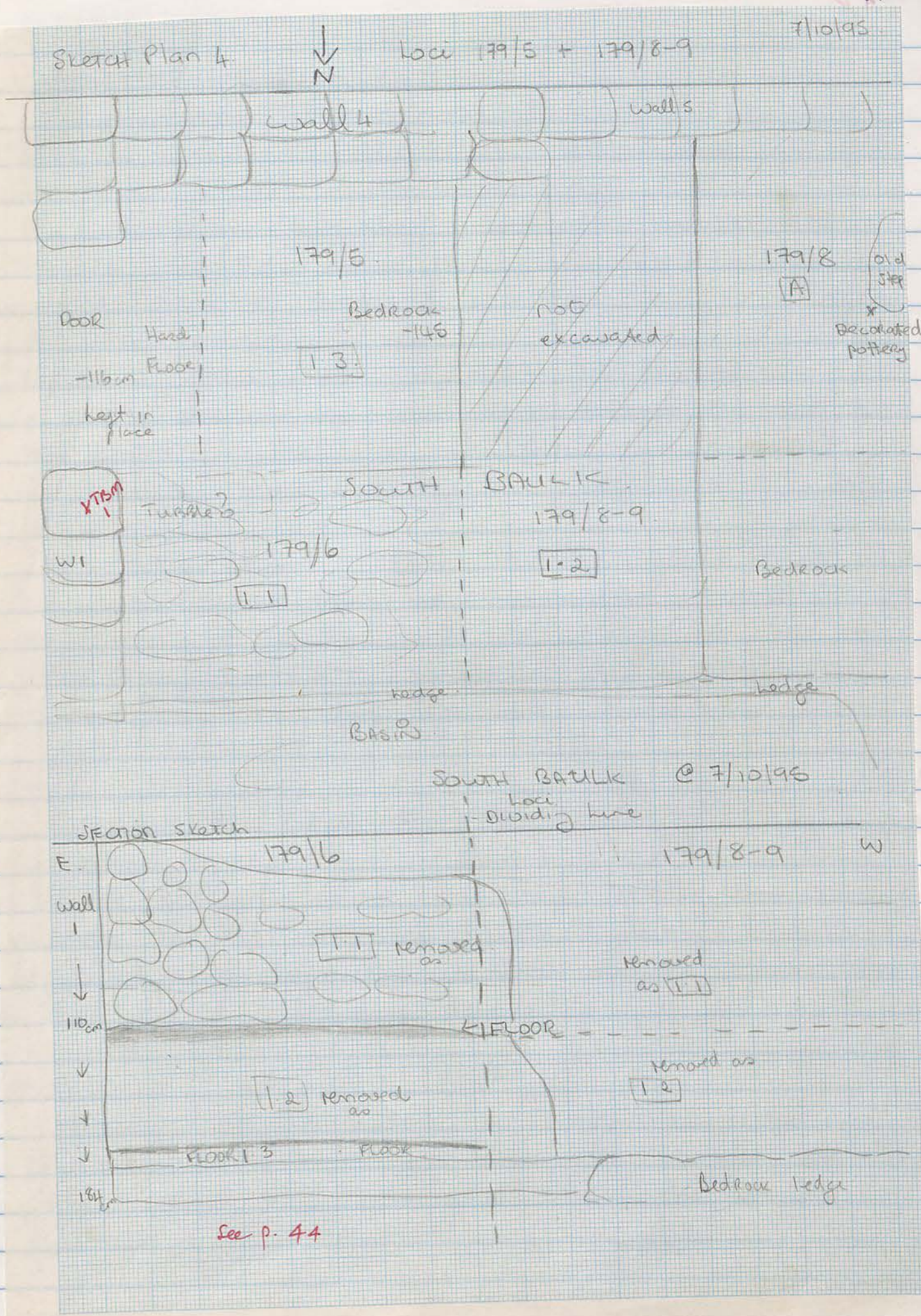
179/8 - A

WEST

I have taken 4 walkers over to the east of the trench to tidy up and remove an old step. Three dressed stones were removed back into a neighbouring southern trench.

179/6

The removal of the South Bank continues with another grid number. ~~This is~~ Today we removed the top section **II.1**



9.10.95.

179/6 - Continued with removal of 1.1 section.

This included a good deal of tumble rocks, -
smashed limestone. Surprisingly this tumble etc
lay on a well constructed floor.

This floor is 7m above bedrock and 110^{cm} below
surface. The floor was not so evident in the
removal of other sections, but this may be because
it was dashed.

Apparently during the removal of the basin area
a floor was discovered lying across the basin.

No doubt if they are at the same level,
my bank floor will be contemporary with
this one.

How this floor relates to the wall ^{III} that
at some point may have extended north of
the steps I don't know.

Also this floor is higher than that in 179/5
remaining ^{partially} in situ after excavation ceased there.

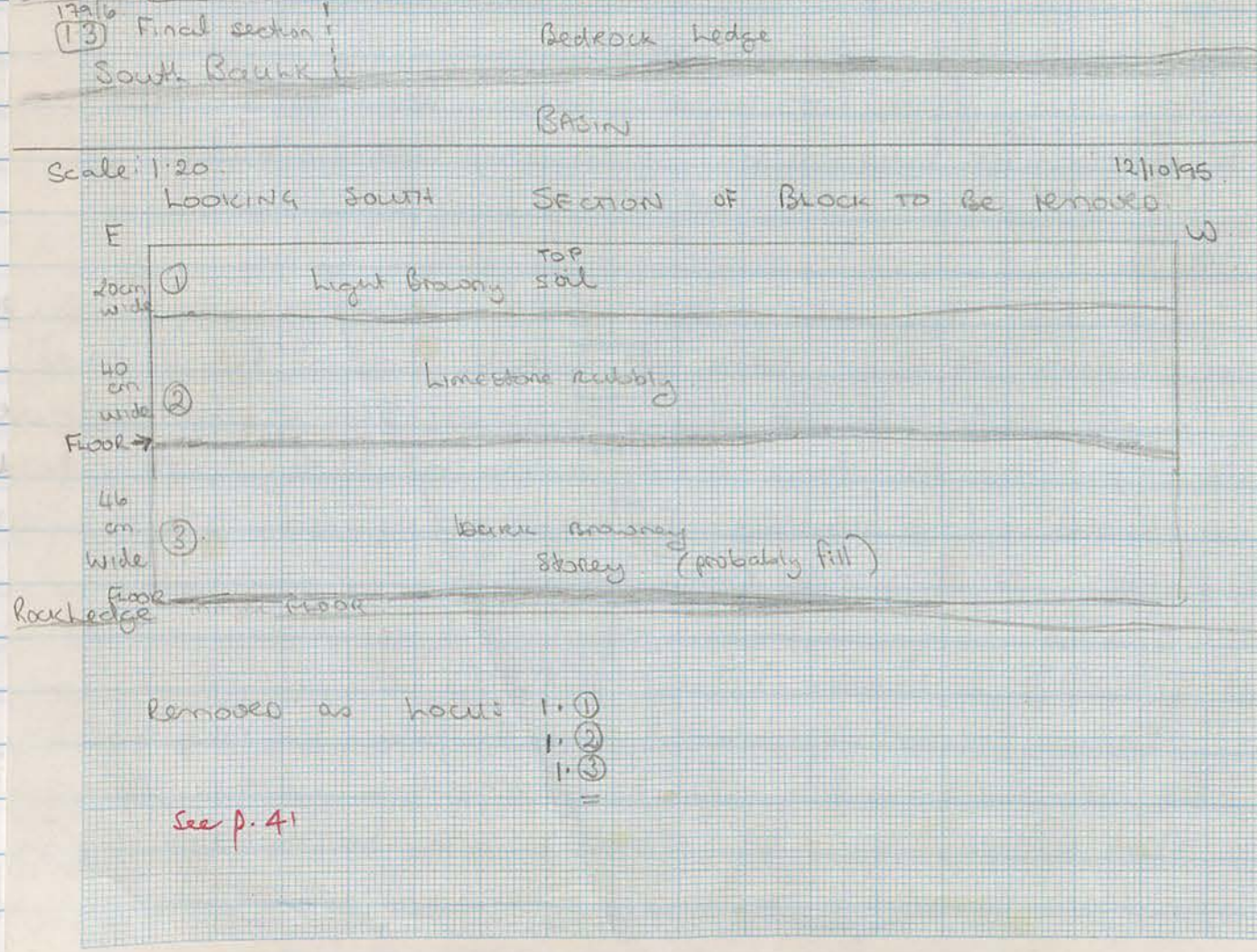
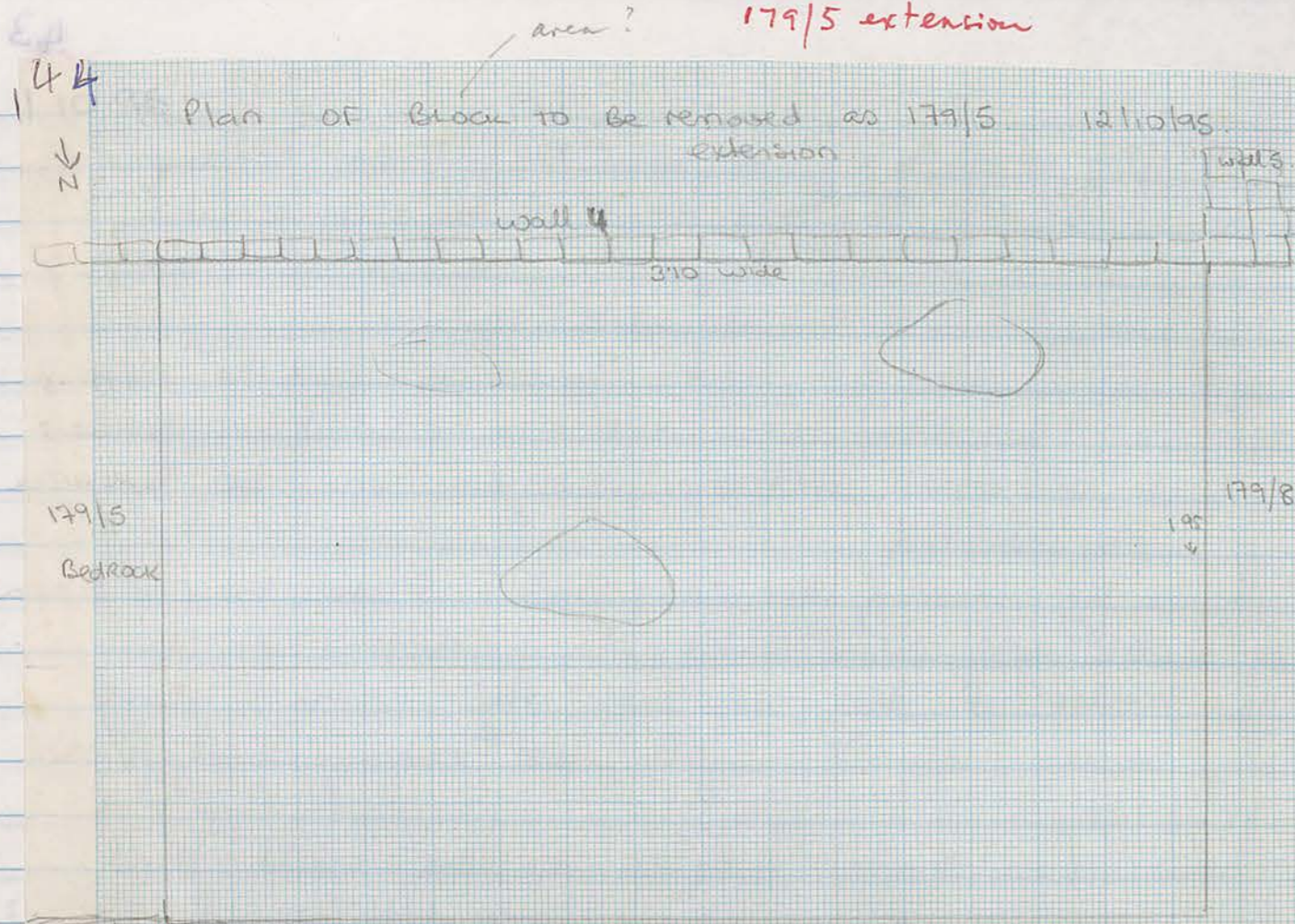
179/8

Finished this area during the morning, obviously pre
excavation of this area finished on a floor level.

I have scrapped off a wind blown 5cm of dirt - removed
the step. In the step debris was a lovely pottery sherd
decorated with figures. This was approx. 10cm above
the floor 95.319 RMB frag - datable?

11.11.1095 Louis 12. 179/6

Today we continued with the removal of
the 2nd steata (2). Everyone was on
this area so it moved a little faster.



12.10.95

locus 179/6

Continued this morning with the final removal of 1.2. I will leave Yannis in this area to do up a check if a floor exists contemporaneous with 179/5 floor. Will remove the level just above bedrock as 1.3. The floor runs up to the ledge and is contemporaneous with the floor in 179/5 left in site. ***Important** This would make this level at least probably cost with basin.

179/5 Extension

This area crosses a few grid lines - I have decided for simplicity to call it an extension of 179/65. This section [310 x 195] will be removed in a fashion similar to the 5th Bank. See plan a section. There are three discernable strata.

14.10.95

179/5 Extension

Taking the last few centimeters off 1.1.

8:30 changed locus to 1.2 - removing 1.2 this will probably take all day.

Keeping Yannis - Helena clearing up the walls a surrounding area.

15.10.95

179/5 Extension

Removing today the last 15cm of 1.2.

By 10:30 changed to 1.3 rubble - it is incredibly boring work for everyone. Noted the same floor appeared in the South bank at this level (some 110cm below/above bedrock). This floor definitely belongs with the southern secondary wall (called W4).

16.10.95 Monday 179/5 Extension

Focus 1.3

Continued with the removal of the stony brown soil. This is very soft and was probably fill to build up to the floor level, discovered yesterday.

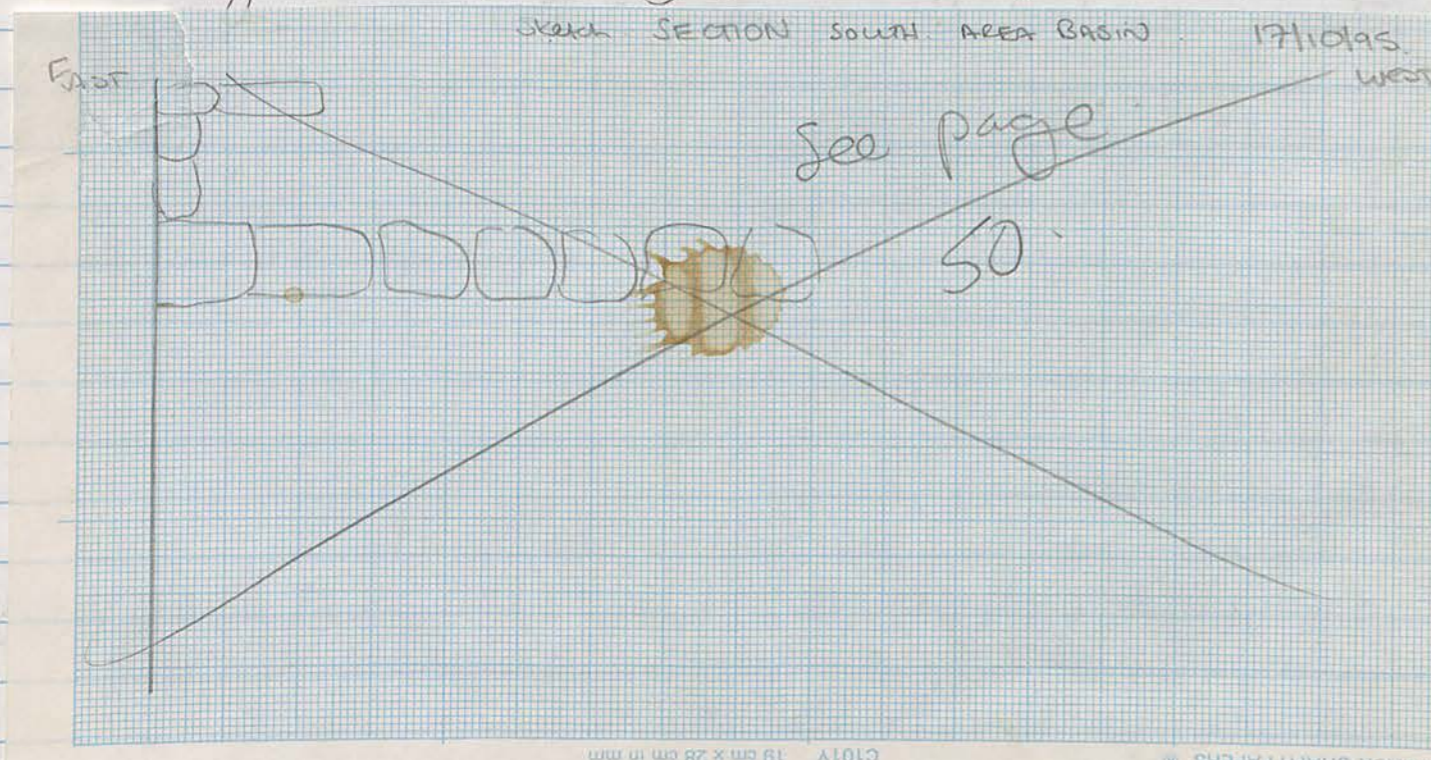
It appears this fill was built on top of the bottom floor which is still visible in part in 179/8 and the remainder of 179/5.

17/10/95 Tuesday 179/5 Extension

Some thing today - removing 1.3 - looks as though we will get through the block. The floor contours.

18/10/95 Wednesday 179/5 Extension

Taking off the last section today. A stamped amphora handle recovered just above floor - primary phase occupation (95.425)



19.10.95 End of Season Summary.
End of Season Photos: Row 10: 28-36 Row 12: 1-12
Row 11 Full Row

The Basin area has produced more problems as excavations continued in associated areas.

When I came into the picture most of the Basin - as areas had been excavated.

I continued by removing the south bank in a fairly large block in the south.

This has given us a southern extension to the basin area. It has shown that wall 4, although pedestalled in part is probably the southern wall.

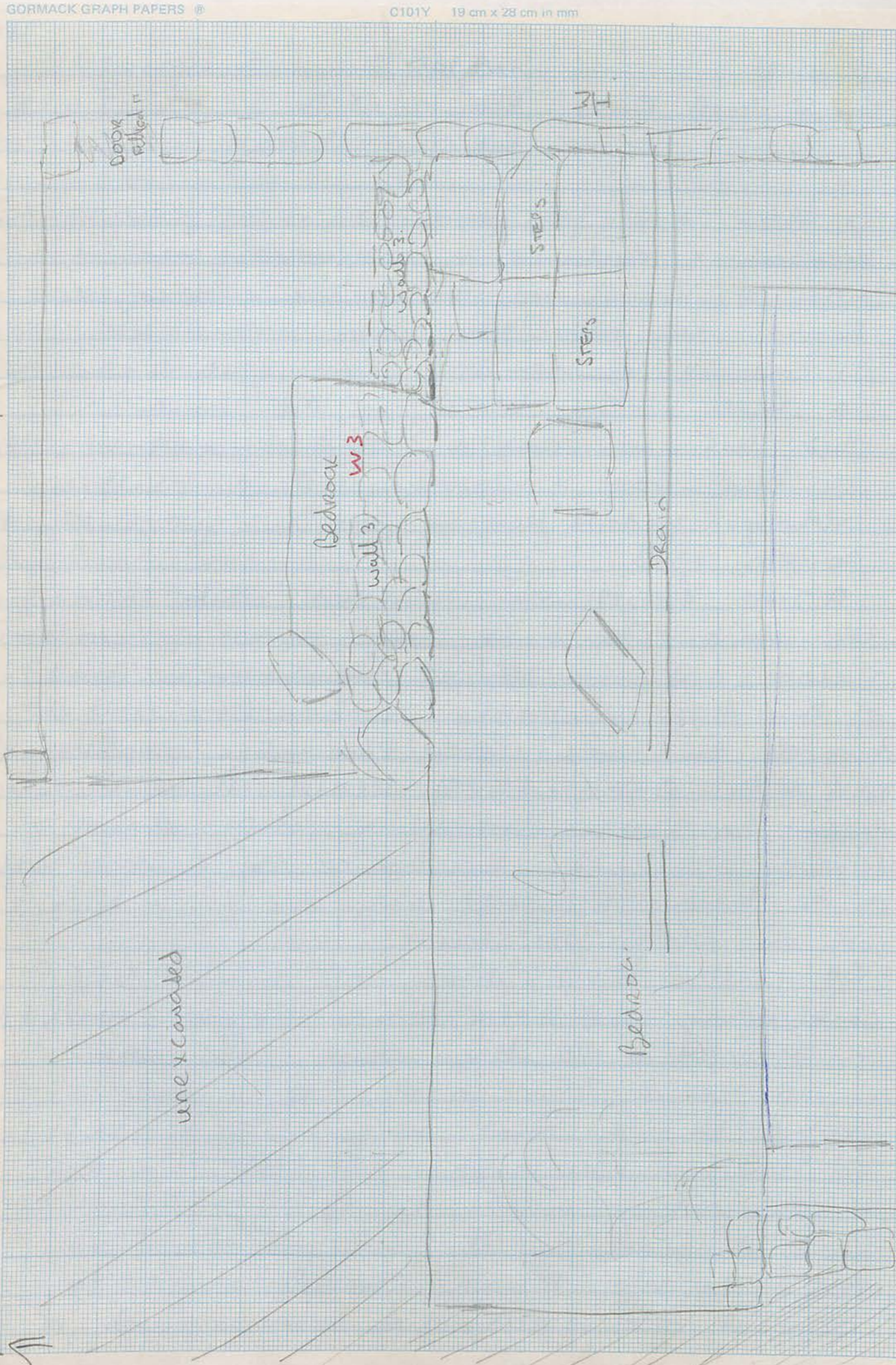
Two floors were discovered while removing the above. One floor lying approx 60 cm from surface and was removed. The extent of this floor is largely unknown (i.e. did it cover the basin area), previous excavation records will need to be consulted. A second floor remains in part "in situ". This floor lies almost beneath W4 and runs up to the southern ledge of the basin. I would say this is contemporaneous with the basin architecture.

All walls (W1; W2; W4) seem to be contemporary with the basin structure. Wall 1+2 are contoured to the basin shape. An unusual feature (FI) in the west wall 2, seem to be all that remains of a wall or buttress. (see section pg 50). How far this extended east is unclear. Wall 3 is a small wall in the north, and it appears to have existed behind the steps at some point, which leaves us with a

FINAL TOP PLAN

V/Roult.

19/10/95



BOOK SHELF

FR

Bedroom

W3

wall 3

STEPS

STEPS

Bedroom

Drain

Basin

W2

W2

Floor

Floor

Bedroom

Slab

W4

wall 4

Door

Floor

level with W2

ledge

W1

Step down

2

2

Scale

3

8.11.95 belongs to another structure (house?) ?

51

problematic section here. Are these steps or might they be benches. It appears the area designated 15/15 is not contemporary ^{why?} with the basin area and it is likely it was separated by a wall - ^{HS} could be a retaining wall - v. likely.

There is a continuous ledge on all sides of the sunken section of the basin. It ranges from 10cm to 1/2 meter (on the west) - stands usually 10-15 cm high.

Given what I excavated I would guess there have been two phases in this area. The first occupation built the basin, the walls & a floor. Later occupation built over the basin or up to the sunken edge??

Its function - well I leave that up to the Hellenistic experts! !

Thomas Peter

Pi

OBJECT LIST

Date	Object (incl most small Finds)	Trench	Locs	Page
2.10.95	Coin (small)	T179-5	1.2	35
2.10.95	Painted wall plaster 3 smt pieces	✓	✓	✓
3.10.95	Coin (small) (above floor)	T179-8	1.3	37
4.10.95	Figurine Head of lady (above floor)	T179-5	1.2	37
7.10.95	Lamp Frag	T179/8-9	1.2	41
9.10.95	Pottery frag with dec figurine found above floor (lower floor)	T179/8	A	43
18/10/95	Stamped Amphora handle	T179/5	1.3	46

WALL LIST:

- wall 1
- wall 2
- wall 3 (Also w III)
- wall 4

(Faint, mostly illegible handwritten notes in red ink, possibly bleed-through from the reverse side of the page. Some words like "found", "frag", and "wall" are visible.)

Mr Chris's
WORKERS DOMESTIC AREA 1995

	M	Tu	W	Th	F	Sa	Su	M	Tu	W	Th	F	Sa	Su	M
YOUNIS IBRAHIM	✓	✓	✓	✓	✓	✓	✓	✓	✓	✓	✓	✓	✓	✓	✓
HALIMA JEDUR	✓	✓	✓	✓	✓	✓	✓	✓	✓	✓	✓	✓	✓	✓	✓
JOUMA ISMAHANI	✓	✓	✓	✓	✓	✓	✓	✓	✓	✓	✓	✓	✓	✓	✓
HALALA ISMAHANI	✓	✓	✓	✓	✓	✓	✓	✓	✓	✓	✓	✓	✓	✓	✓
HAAJA YOUNIS	✓	✓	✓	✓	✓	✓	✓	✓	✓	✓	✓	✓	✓	✓	✓
*MOUNA IBRAHIM ABDULLAH	✓	✓	✓	✓	✓	✓	✓	✓	✓	✓	✓	✓	✓	✓	✓
AMOUNA MOHAMMED	✓	✓	✓	✓	✓	✓	✓	✓	✓	✓	✓	✓	✓	✓	✓
JOUMA JEDUR															

* GONE TO PICK COTTON ON THE BALIK 19/9 REPLACED BY BROTHER AHMED. 25/7 AHMED GONE TO RESORT IN BRAN (COUSIN) REPLACED HIM. JOUMA JEDUR STARTED WORK 26/7. Jouma Ismahani will be fishing on some days. son Ibrahim replaces him - good worker. Hussein replaces Achmad sometimes.

TOOL REGISTER

- hand picks
- Kasma Kabir (2 between Sita & Domestic)
- trowels 3
- ash pans 3
- Zambeel 8
- large shovel 1
- hammer 1
- metal spikes 1
- ~~mikere~~ 1 stolen 17/9.
- forshai (various) 3

RAIO
DNY
OFF

	Tu	W	Th	F	Sa	Su	M	Tu	W	Th	F	Sa	Su	M	Tu	W	Th	F	Sa	Su	M	Tu	W	Th
YOUNIS IBRAHIM	✓	✓	✓	✓	✓	✓	✓	✓	✓	✓	✓	✓	✓	✓	✓	✓	✓	✓	✓	✓	✓	✓	✓	✓
HALIMA JEDUR	✓	✓	✓	✓	✓	✓	✓	✓	✓	✓	✓	✓	✓	✓	✓	✓	✓	✓	✓	✓	✓	✓	✓	✓
JOUMA ISMAHANI	✓	✓	✓	✓	✓	✓	✓	✓	✓	✓	✓	✓	✓	✓	✓	✓	✓	✓	✓	✓	✓	✓	✓	✓
HALALA ISMAHANI	✓	✓	✓	✓	✓	✓	✓	✓	✓	✓	✓	✓	✓	✓	✓	✓	✓	✓	✓	✓	✓	✓	✓	✓
HAAJA YOUNIS	✓	✓	✓	✓	✓	✓	✓	✓	✓	✓	✓	✓	✓	✓	✓	✓	✓	✓	✓	✓	✓	✓	✓	✓
*MOUNA IBRAHIM ABDULLAH	✓	✓	✓	✓	✓	✓	✓	✓	✓	✓	✓	✓	✓	✓	✓	✓	✓	✓	✓	✓	✓	✓	✓	✓
AMOUNA MOHAMMED	✓	✓	✓	✓	✓	✓	✓	✓	✓	✓	✓	✓	✓	✓	✓	✓	✓	✓	✓	✓	✓	✓	✓	✓
JOUMA JEDUR																								

Report on workmen :-

28/9/95

	CHRIS	KAREN'S
Amouna Mohammed	excellent	✓
Jouma Jeddur	" "	✓
Jouma Ismahani	" "	lazy
Halala Ismahani	" "	✓
Younis Ibrahim	" "	✓
Halima Jeddur	" "	✓
Hajja Younis	" "	good
Mouna Ibrahim Abdullah	good	
and Ahmed	only fair	BOR
Sian	?	
Hussein	gar	

The first part of the report is a list of names and their corresponding numbers. The names are written in a cursive script, and the numbers are written in a simple, blocky font. The list is organized into columns, with names on the left and numbers on the right.

The second part of the report is a list of names and their corresponding numbers, similar to the first part. The names are written in a cursive script, and the numbers are written in a simple, blocky font. The list is organized into columns, with names on the left and numbers on the right.

The third part of the report is a list of names and their corresponding numbers, similar to the first two parts. The names are written in a cursive script, and the numbers are written in a simple, blocky font. The list is organized into columns, with names on the left and numbers on the right.

