

J-K Acropolis 1995

Lyle Smith



Comp. # 95.218
Annot. = T53. 14.2 Annot.
T54

A4 NOTE BOOK

L.S

No. 595

JK 95

JK 95

T45

T49

+ extension

Lyle Smith	T45	T49
	T53	T53



9 312826 005954

T45

11/9/95

SW wall sth corner collapsed in trench,
cleaned to previous exposed level.

all pottery charcoal etc collected + bagged,
- surface find on acrop: 1 small coin, thin but corroded (small find/inv) inv.?

the trench is no longer lined up with the wall, so
will be corrected (w) to stay parallel with wall.

trench at approx 1m beyond last exposed block.

clearing top 10-15 cm to Nth extending trench.

- called locus 1(A)

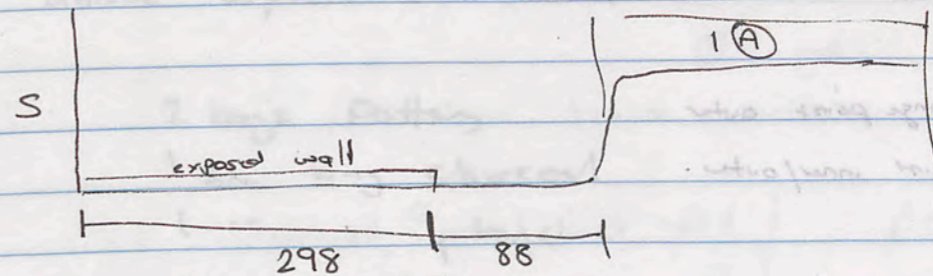
finding good diagnostic bone + 1 tooth JK 95.022

some charcoal + lots of sherds. Anti. 1

found 1 well worked core tugged + bagged sep.

approx 20 cm down 1.5m from last exposed wall stone

a recent plastic bag was uncovered.



extended to beyond (just)
where it is expected
to meet E/W wall.

1 small bag pottery

1 medium bag pottery

1 small bag charcoal

1 bone

3 objects bagged

T 45 trench clearance.

70 non-diagnostic coarse ware body frags. 1 c/w cookware body frag.

diagnostics

- 1 medium fine bowl rim frag red paint
- 1 c/w bowl rim frag
- 1 body sherd - dripware
- 1 body sherd greyware
- 1 med. fine body frag black paint
- 1 med. fine body frag black paint outer red/brown paint inner
- 1 c/w jar rim frag.

T 45 acrop bc 11/9/95

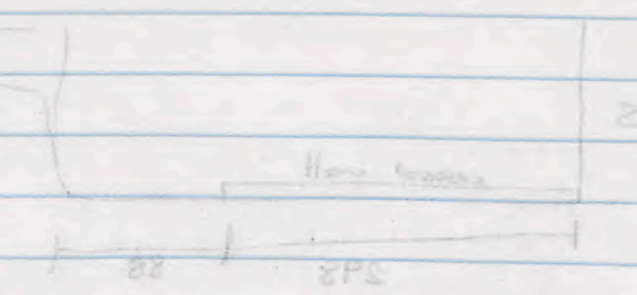
30⁴⁷ nondag @ body sherd.

diagnostics

- 1 bottle neck rim frag
- 4 c/w handle frags
- 1 c/w jar rim "pic crust"
- 1 c/w amphora toe.
- 1 m/fine brown paint "patch"
- 3 c/w ring base frags.
- 2 incised body frags weak orange paint outer
- 1 " " " brown paint inner/outer.

43 bowl rim frags

- 1 bowl rim frag greyware
- 2 plate rim frag weak black paint
- 2 c/w jar rim frags double rim.
- 2 c/w jar rim frags.
- 1 bowl rim frag - large lip.
- 1 c/w jar rim frag
- 32 m/fine brown pt bowl rim frag
- 1 m/fine bowl rim frag orange paint
- 2 body sherd m/fine orange paint
- 3 " " m/fine weak black.
- 1 " " " strong black paint
- 5 " " " brown/orange paint

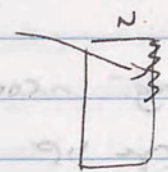


T 45 12/9/95 Tues.

dusty or what!

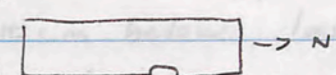
cont'd levelling approx 30cm down. req'd clearing of

spoil pile/rocks on NE wall to prevent rock fall.



Trench under Bedouin guidance tried to dogleg to the W in NW corner. will use this fault as a step out of the trench.

have left an "outcrop" on NE wall to prevent a wall collapse ie



+ completed level at 30cm depth before 9:00.

* glass fragment approx centre trench 30cm depth 6m from sth bank. (2x1.5cm frag)

down 50cm in (A) - still very disturbed - many sherds etc, broken rubble + mortar. still approx 40-50cm above exposed wall level to Nth.

- 2 bags Pottery
- 1 sm bag charcoal
- 1 " " of bone
- 1 glass frag.

T45 11/9/95 loc 1(A)

bag 1 of 2

199 c/w body shreds pitched + coarsware, many pieces of poss 1 pitkos?

diagnostics

- 1 c/w burnt bowl rim frag cooking pot?
- 1 c/w bowl rim frag - large lip (see other one 11/9/95 loc 1(A)) ^{mortarium} rim frag.
- 1 m/fine ~~ring~~ ring base shallow bowl / plate? ^{orange} red + black paint
- 2 c/w handle frag
- 2 c/w jar rim frag - double rim thickened
- 1 c/w jar rim frag single rim thickened
- 2 m/fine ring base frags
- 1 bowl rim frag c/w.
- 1 small bowl rim frag echinus?
- 5# m/fine body frags red slip
- 1 m/fine body frag ~~brown~~ brown paint + incised.
- 1 " " " " " "
- 1 c/w rim frag burnt
- 1 m/fine rim frag red outer / red brown slip inner.

21

12/9/95 bag 2 of 2 loc 1(A)

296 c/w body shreds pitched + burnt included.

diagnostics

- 1 c/w bowl rim frag (mortarium?)
- 1 c/w body frag green + yellow glaze.
- 1 c/w mortarium rim frag
- 1 c/w handle stub (cookware?)
- 1 c/w thick body frag red outer
- 5 echinus bowl rim frag ^{1 - no paint} 2 red 2 black paint
- 1 m/fine fish plate base red paint
- 1 m/fine plate rim frag brown outer / red black inner.
- 1 m/fine bowl rim frag red slip
- 1 c/w plate rim frag
- 1 c/w rim frag bowl - brown paint
- 3 m/fine body frags red/brown paint
- 1 c/w handle / rim? fragment.
- 1 c/w ring base frag.
- 1 m/fine body frag - red paint
- 5 c/w double rim frag - one pitched.
- 5# c/w bowl rim frags. 1 red slip
- 1 m/fine shallow bowl / plate base ^{brown} slip
- 1 c/w rim frag (non descript)
- 1 m/fine body frag brown slip (2 lines)
- 1 c/w body frag black part / pitched? inner.
- 1 c/w body frag red paint inner.
- 1 m/fine body frag red slip
- 1 m/fine body frag red/brown inner / black outer.

38

13/9/95
20

T45

cont'd clearance to stone course level + 10cm down.

very small quant of ^{painted} plaster ∴ confirms that these are outside / courtyard walls.

good quantity of bone + charcoal in these layers.

- workers * objects - 1 pottery mend with iron bracket
- kramer 1 nail
- Yahya 1 mail frag.
- Salem
- Hadija top of have gone 10cm below last stone course level
- Mahmoud - extend to end of trench. Still is very
- Sahba disturbed, through hitting darker soil layers / soil
- Mehri etc.
- Medehri no sign of walls.
- ? woman ① 1 large bag pottery
- ② small bag charcoal
- ③ small bag bone (-good diagnostics) some burnt.

T45 pottery for 13/9/95.

260
259 body sherds + 12 cw body sherds - pitched.

diagnostics

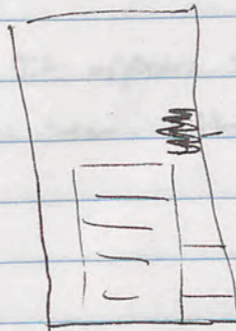
- 1 clw amphora toe.
- 1 bowl or ring base frag black paint outer grooved inner.
- 1 fish plate base frag red slip inner drip paint outer.
- 1 plate base frag red slip inner + outer.
- 76 ring base frags
- 1 mortarium ring frag.
- 4 clw jar rim frag - double lip/rim
- 3 clw jar rim frags single lip/rim.
- 1 ring base frag brown paint inner + reddish.
- 1 clw body sherd - drip ware
- 1 clw plate rim frag
- 1 clw bowl rim frag - burnt
- 2 clw body sherd - mised
- 1 m/fine body sherd red slip
- 1 handle stub - brown paint
- 1 plate rim frag red paint
- 1 bowl rim frag
- 1 body sherd - black paint outer
- 1 base frag - grooved inner.
- 3 clw body sherds red paint outer.
- 1 bowl rim frag m/fine red slip
- 1 body sherd brown paint/slip
- 1 m/fine body sherd brown/black paint

T45 14/9/95

-straightening built (NW) wall

⊗ found small bronze frag. (small find)
currently 15cm below top of exposed wall section along
entire trench.

⊗ photo taken by Graeme 7:00 am of trench swept +
cleared to 15cm below wall course



immediately below 15cm level here hitting many rock chips
possibly from the robbing / or maybe foundation
fill as is off to side of expected wall.
Soil still over expected wall course

(brown rocks - red)

condition of soil after 5th block indicates that this robbing was
early - small stones + loose dusty soil. windblown?

Wall continues one course down to current end of trench.
will need to extend the trench by approx 1/2 m to
make sure of join with E-W wall + check extension
beyond?

Small quant of pottery today (el handalillah) mostly clw body
frags few diagnostics / m/fine ware.

course starts 35cm down from top of previous level.

1 med bag pottery

1 small bag charcoal

1 small bag bone

1 bronze frag

1 nail frag.

14/9/95 Pottery loc 1A

10⁷ body shreds + 3 large pitched body shards.

diagnostics

1 clw rim frag jar? double lip + pitched inner.

1 m/fine shallow bowl rim frag red slip inner + outer.

1 clw ring base frag

1 clw handle stub / jar rim

1 clw jar rim frag - double lip

1 clw jar rim frag - single lip

1 clw bowl rim frag black matrix red outer

2 m/fine bowl rim frags

1 m/fine body shard red slip

1 m/fine body shard red/brown paint + incised

1 clw rim frag (bowl?) burnt

1 body shard black slip

1 m/fine body shard brown slip/paint

1 base frag brown paint outer red inner

1 body shard red paint inner

1 jar neck frag - pitched + grooved outside / lip?

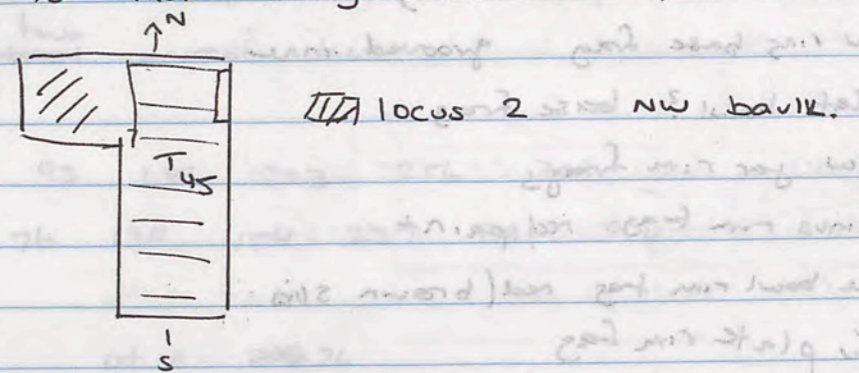
Karba - "before"

T45 16/9/95

clearing bank collapse NE corner + clearing to determine whether w course of stone missing / robbed / or whether not continuous.

1 Hamadi has returned from cotton picking - will replace Mahmoud. Amona has not - apparently married + has child in other village. Herura still working

It appears that there was a wall extending w. trench end has been altered to find missing stone course.



with the step down in wall course - seems to have been joined to rebel outcrop on E. side (6th stone from 5th bank). 6th block appears to have been repaired / fitted to outcrop?

Have looked for wall join at 5th end of trench - w join. The eastern join is clear. The w appears not to have existed - beyond N-S wall course to w. appears to be fill - ie dark clay + limestone chips.

locus 2 - appears to be extensively robbed. However - there is concrete along w edge of N/S wall at this point indicating a continuation of the wall

2 nails 1 bronze pin? 1 small black glass frag.

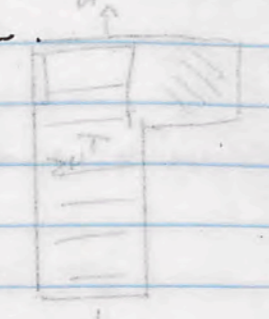
1 red bag pottery

1 small bone

1 small charcoal.

T45 16/9/95 pottery. 2P/2/21 2HT

- 194 c/w body shards including 3 pitched.
- Diagnostics:
- 1 unguentarium fragment - base + part profile
 - 1 m/line body shard (thick) + red paint one side (outer).
 - 1 c/w handle stub - cooking ware.
 - 1 mortarium bowl rim frag
 - 1 c/w handle frag.
 - 2 c/w ring base frags.
 - 1 c/w echinus bowl rim frag
 - 1 c/w ring base frag grooved inner.
 - 1 flat bowl? base frag
 - 2 c/w jar rim frags
 - 1 echinus rim frag red paint
 - 1 fine bowl rim frag red (brown slip)
 - 1 c/w plate rim frag
 - 3 c/w rim frag
 - 2 c/w bowl rim frag
 - 1 m/line plate base frag incised.
 - 1 plate rim frag grooved.
 - 1 bowl rim frag m/line red paint inner.
 - 1 bowl rim frag m/line no paint
 - 1 m/line body shard red slip
 - 1 " " " red + black slip
 - 5 m/line body shards brown + red paint
 - 1 m/line body shard brown/black paint + grooved?
 - 1 c/w body shard red paint outer + incised outer.



T45 17/9/95 2P/2/21 2HT

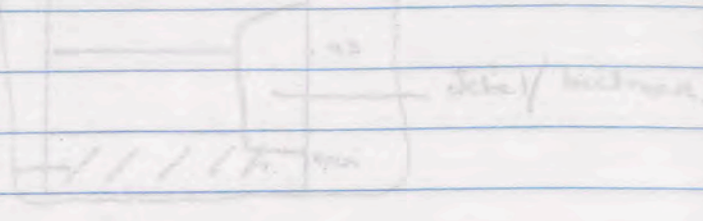
NE bank corner collapsed overnight. + I will probably do so again given loose rocky nature of deposit

course 2 - robbed away extensively - at least 2 courses below Nth end of r/w wall

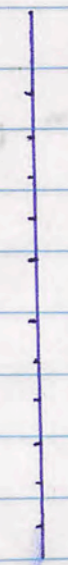
wind from SW today - very dusty!

3rd course down - joined to Nth wall is an irregular block that appears to be a foundation stone set directly on the jetty. Just to Sth of this block is a trench cut into bedrock. In this foundation trench I found ^{two} animal teeth

5th bank - 1st	40cm.	93	149	203	256	306
2nd course drop.		76	130	184	237	291
1st 5th	109 width					1st E. 26.
last of first course						105 width
2nd course						103
last of 2nd course						92cm.



T45



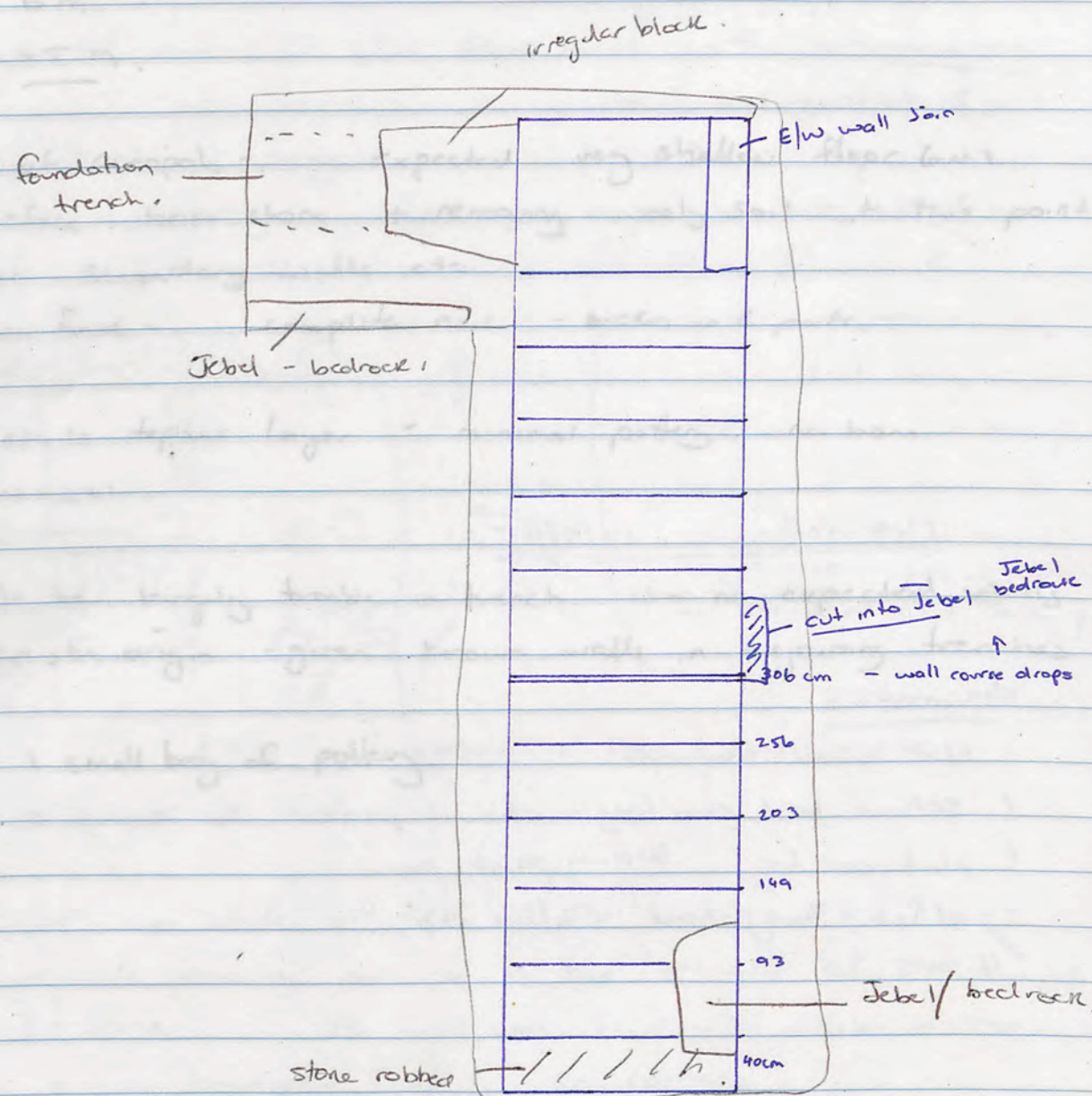
T45 Pottery 17/9/95

95 body sherds 1 pitched body sherd.

diagnostics

- 1 unguitarium toe frag
- 2 clw ring base frags
- 1 amphora toe frag.
- 1 clw plate? rim frag
- 2 (upright) bowl - rim frag - red paint
- 1 bowl rim frag
- 2 double rim jar rim frags
- 1 clw thickened bowl/jar rim frag
- 1 plate? rim frag
- 4 m/fine body shreds red paint
- 2 m/fine body shreds red slip
- 1 m/fine body shrd brown paint outer.

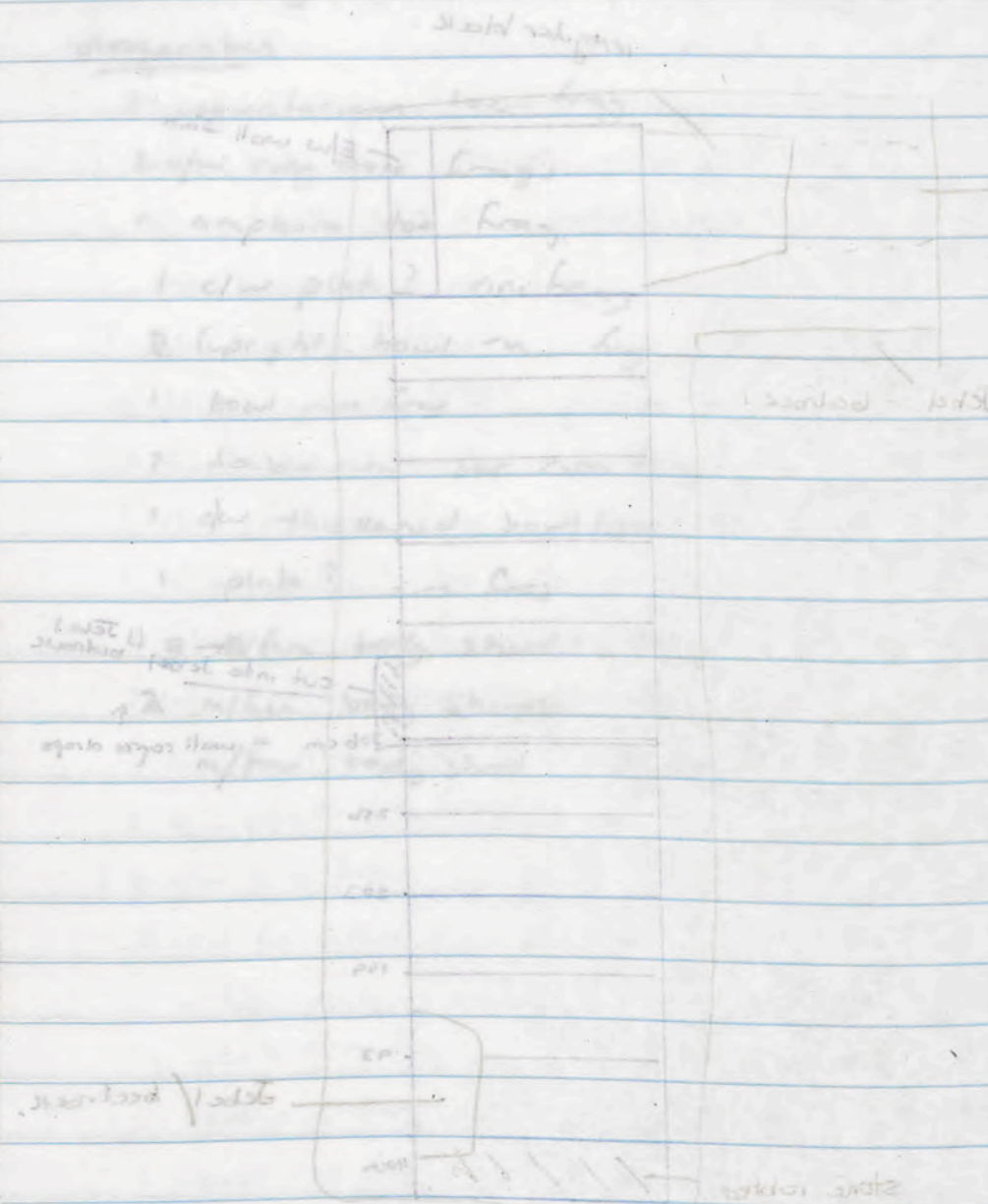
17/9/95



18/9/95 T45

final Massif + Surveys.

Barry measured trench
18/9/95



Hand-drawn plan
 18/9/95
 Trench
 Wall
 Plaster

T49 19/9/95
 T49 - 5th end of acrop PPT 18/9/95

N/S 6m
 E.W. 4.5m
 5th end of acropolis - expected very shallow floor level.
 cleared surface loose stone + removing only soil at this point
 to see for secondary walls etc
 - surface find - complete nail - broken in 2 parts.
 Somewhat sterile topsoil layer - minimal pottery, no bone
 or charcoal.

appears to be largely timber in trench. - no expected walls
 of Hellenistic origin - given known walls in adjoining trenches
 * 1 small bag of pottery.
 as E.W. wall runs at the 5th. 5th end of trench
 due to good wall probably not to be in the 5th end of T49
 for any 5th corner. The wall was lined with plaster in T49
 but very plaster fragments found in 5th corner.

* 1 small bag of pottery

T49 pottery 18/9/95 - PNT

18 non diagnostic body sherds

diagnostics

2 clw ring base frags.

1 fish plate rim frag clw.

2 clw bowl rim frags - adjoining

5

T49 pottery 19/9/95

45 clw body sherds

diagnostics

1 clw handle fragment

1 echinus bowl rim frag brown paint salt damage.

1 plate rim frag brown paint inner

1 m/hie body shrd - black slip.

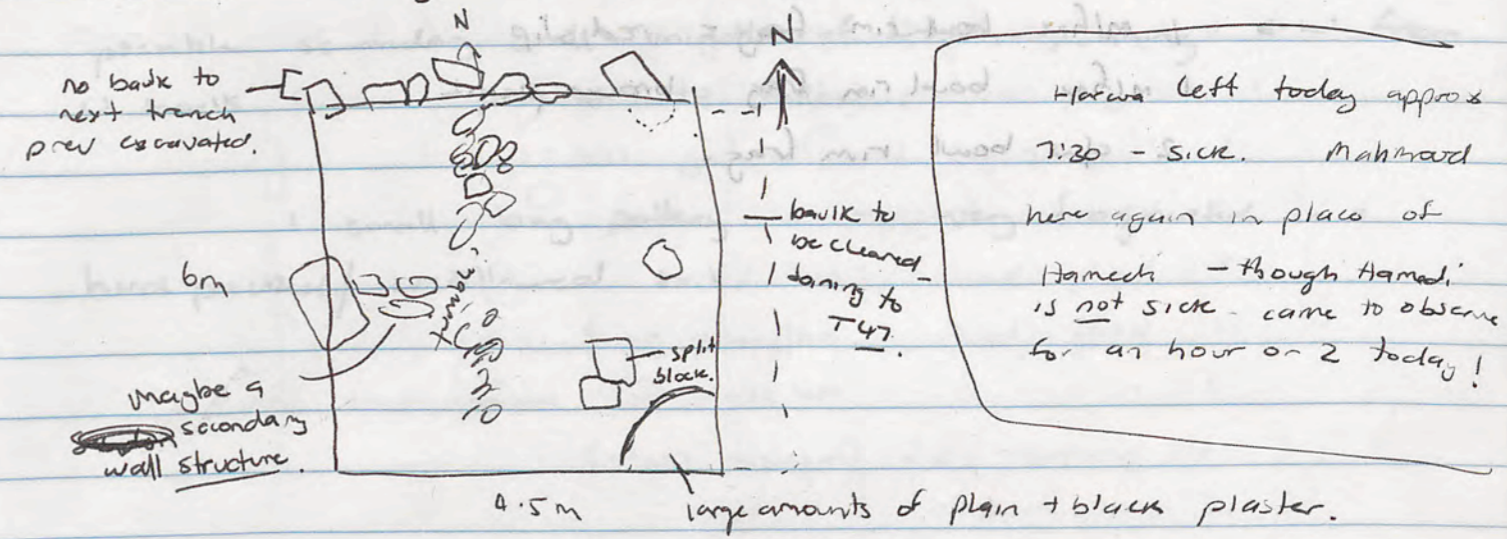
4

T49 19/9/95

completed level of trench. approx 3cm depth E side / 10cm W side. recommenced SE corner - hit floor level within cm's.

black plaster + plain plaster in abundance - a balled + 1 large frag kept + bagged.

Still minimal pottery. rocks in trench appear to all be ~~to~~ tumble - very few appear worked (weathered?)



Hamad left today approx 7:30 - side. Mahmud here again in place of Hamad - though Hamad is not sick - came to observe for an hour or 2 today!

no bone or charcoal in surface soil layers.

an E-W well runs at the sth end of the trench T47 but due to grid will probably not be in the sth end of T49 except for very SE corner. The wall was lined with plaster in T47, and many plaster fragments found in SE corner.

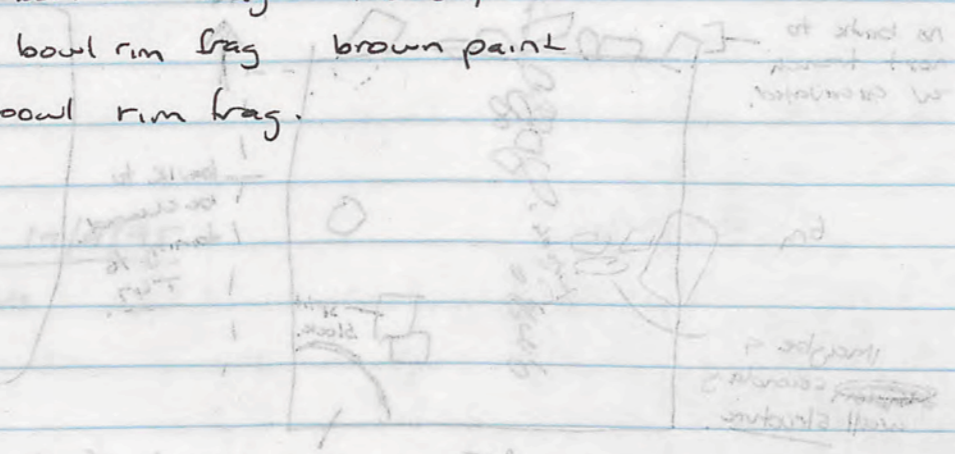
* 1 small bag of pottery.

Pottery 20/9/95

SS body shards.

diagnostics

- 1 cw handle frag
- 2 cw ring base frags
- 1 cw horn plate rim frag
- 1 cw bowl rim frag - mortarium?
- 1 m/line bowl rim frag - red slip
- 1 m/line bowl rim frag brown paint
- 2 cw bowl rim frag.



got a nice agrab today which was promptly morted after swas.
 cold today - wind from the north again.
 clearing the trench in sections - strips approx 1/2 m wide running
 S → N. appear to have slightly missed the floor level? - or perhaps
 plaster reflects later flaking + tumble after initial soil deposit.
 - removed most stones from NW quarter of trench -
 possible secondary wall middle of trench running E-W from
 U bank - pictures to follow.

1 small bag pottery. - very fragmented in a
 hard packed / weathered soil.

1 bag of pottery
 no small frags - no base or character.

* 1 small bag of pottery

Pottery 2/19/95

52 c/w body sherds.

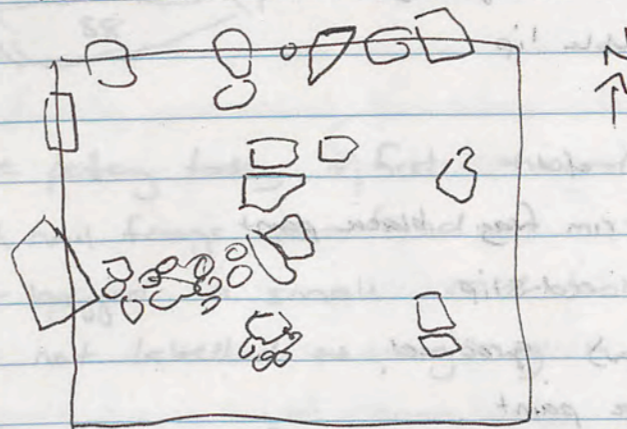
diagnostics

- 1 c/w fish plate rim frag.
- 1 c/w bowl/jar rim frag (red matrix)
- 2 ring base frags
- 2 c/w plate rim frag
- 1 body sherd yellow/green glaze.
- 1 c/w jar rim frag (double lip.)
- 1 m'fine upright bowl rim frag red slip
- 3 bowl rim frags
- 2 body sherd - red slip
- 1 body sherd red/brown paint outer.
- 1 " " red slip outer, brown paint inner.
- 1 grooved plate fragment (center)

T49 2/19/95

still clearing soil + stray rocks. very few stones appear
 worked - most likely a result of tumble + weathering.
 getting more plaster - this time in S.W. corner.
 Also more pottery as we get deeper. - as expected.

eroded stone NW corner. 58 x 42 x 38
 removed most of tumble in W half of trench.



⊗ 1 med bag of pottery
 no small finds - no bone or charcoal.

PPT
Pottery 23/9/95

141 body shreds.

- diagnostics

3 adjoining fish plate ring base frags c/w

2 fish plate ring base frags c/w

5# c/w ring base frags.

1 fish bowl jar base frag

7 c/w plate rim frags non-adjoining.

1 c/w jar rim frag. double lip

1 c/w handle frag

2 echinus bowl rim frags c/w

1 m/fine echinus bowl rim frag black paint

1 m/fine bowl rim frag red-slip

1 body sherd (c/w/m/fine) grooved.

1 body sherd red + black paint

1 c/w bowl rim frag

1 c/w rim frag plate/bowl?

28

T49

23/9/95

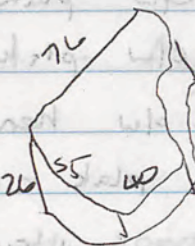
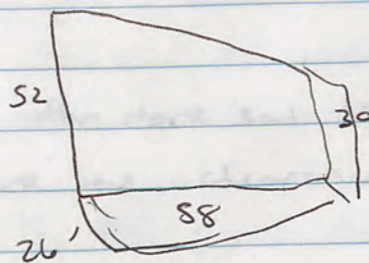
stone removed

- 3m from Nth balk - 1m from W

74 x 60 x 30

- not a secondary wall running E-W - soil underneath

stone course - too far above floor level.

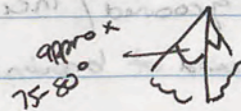


more pottery today + first charcoal in trench - small amount

- small nail frags also found.

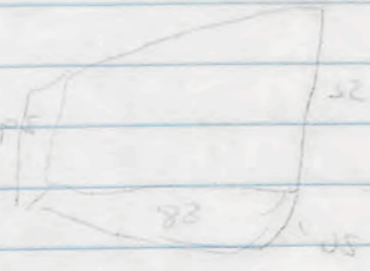
- bagged a small rock looking frag - green/grey colour - not labelled as anything in particular (shv?)

found corner of stone worked 3 sides - but not a right angle - put aside for Barry to see

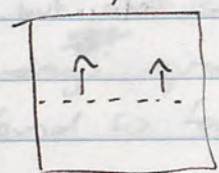


- Barry has seen + measured stone 25/9/95.

- 230 body sherds
- diagnostics
- 5 clw ring base frags
- 1 clw fish plate base
- 1 clw plate base red paint inner
- 1 clw plate base - grooved.
- 3 clw handle frags
- 10 plate rim frags clw.
- 8 bowl rim frags clw
- 1 clw jar/bowl rim frag
- 2 adjoining bowl rim frags brown paint
- 4 clw jar rim frags.
- 1 clw bowl rim frag brown/black paint inner.
- 1 m/fin bowl rim frag black paint inner.
- 5 m/fin body sherds red paint
- 2 m/fin body sherds red slip.
- 2 body sherds grooved/incised exterior. clw
- 1 m/fin body sherd brown paint + grooved (plate rim?)



- possibly at a floor level at the centre of the trench -
 soil change - slightly darker working now in a straight line across
 the trench S → N



after dark soil layer - hard packed whitish soil - floor level.
 dark soil clearance = locus 2.

- finding increased quantities of pottery - mostly coarseware -
 very little painted/slip. - small quantities of charcoal but still no
 bone

- photo of trench + workers taken - with date #28

- * small fragment of glass found in floor level
- * 4 nail fragments.
- * 1 large bag of pottery.
- * small bag of charcoal.

- Now working from centre to the Sth - will remove all
 stones above/at soil level as they do not constitute a wall.

LA: GIVE ME PEN PLEASE

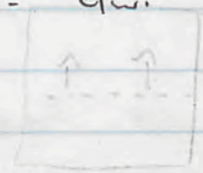
LA: NO

لا يملك لا يملك

PHT

T49 Pottery 25/9/95

- 191 clw body shreds.
- diagnostes.
- 3 fish plate ring base frags - clw.
- 1 ring base frag clw
- 100 clw plate rim frags
- 1 clw jar rim frag + neck
- 6 clw bowl rim frags
- 1 m/fin bowl rim frag orange/brown paint
- 1 echinus bowl rim frag brown paint top 1-1.5cm. ground -
- 2 echinus bowl rim frags
- 2 clw body shreds with vertical ribbing / pattern.
- 15 clw jar rim frag double lip
- 1 clw rim frag unknown vessel type.
- 1 m/fin bowl rim frag red slip
- 5 m/fin body shreds red slip (1 incised)
- 1 m/fin body sherd red paint inner / black paint outer.
- 1 m/fin body sherd orange/red paint outer.



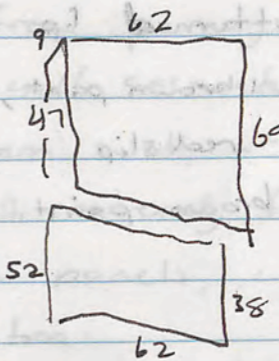
T49 25/9/95

PHT

- clearing trench to floor level in S part of trench.
 approx 3m N → S 30cm depth E bank 60-70cm W bank.
 Still no sign of bone - but still some charcoal - fairly minimal -
 pottery consistent with yesterday's quantities.
 The lack of objects found so far perhaps reflects the trench position - centre of room.

The floor seems fairly complete so far despite the timber

Stone SE corner.



removed from trench.
 when removed - clearly only the
 outer facing of a block that
 has broken away - only 9cm
 thick - one side clearly
 worked - the other weathered.

Lyle, GIVE ME PEN PLEASE

B. K.

LA NO

C. J.

19/10/95 -

22/10/95

25/10/95

25/9/95 BAN

KFAN BAN

Pottery. T49 26/9/95

26/9/95 PNT

101 ~~100~~ clw body shreds + locus 2

diagnostics

11 clw plate rim frags (2 adjoining)

1 clw fish plate ring base frag.

1 clw ring base frag.

1 ml fine fish plate ring leg red/brown paint.

3 clw jar rim frags.

1 clw handle frag

6 clw bowl rim frags

1 clw bowl rim leg outturned lip

2 clw bowl rim frags 1 brown paint, 1 red slip outer.

5 ml fine body shreds red slip

1 ml fine body sherd brown paint

T49 26/9/95

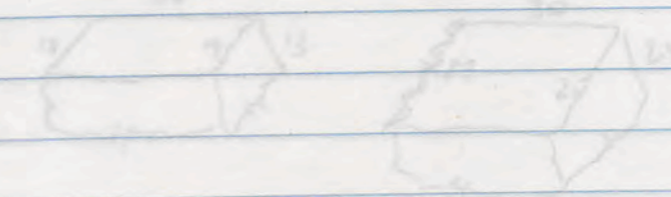
evidence of a fire 2m from E. bank 1 1/2 m from Sth
large quant of charcoal + dark soil layer

Trench extended 1m to Sth this morning - but do not expect to find doorway. wall appeared in Sth bank very close to SE corner not enough room between T47/T49 for a doorway. The 1m extension cont'd to determine whether it's an outside wall.

fire pit seems to be from primary occupation - begins at floor level perhaps a pit - will excavate later when full extent known - appears to extend out from wall at this stage.

EW wall covered with extremely fragmented plaster - as we know of its plain / single colour panels, will not excavate backfill exposed section.

- trench extension opened on S wall/bank working back to outside of wall = Locus 2.1



Handwritten notes at the bottom of the left page, including dates like 22/10/95 and 26/9/95, and some illegible text.

Pottery T49 27/9/95.

Pottery 26/9 + 27/9/95 locus 2.1

9 body sherds

diagnostics

1 clw fish plate rim frag

1 clw bowl/ jar rim frag

1 greyware rim frag - unguitarium?

27/9/95 locus 2.

21 body sherds

diagnostics.

2 adjoining clw plate rim frags (broken during excavation)

1 clw fish plate ring base frag

1 clw plate rim frag

1 clw bowl rim frag

1 m/fin body sherd - red slip

1 m/fin body sherd - red slip + ribbing.

27/9/95 locus 2.2 (E. bank)

26 body sherds

diagnostics

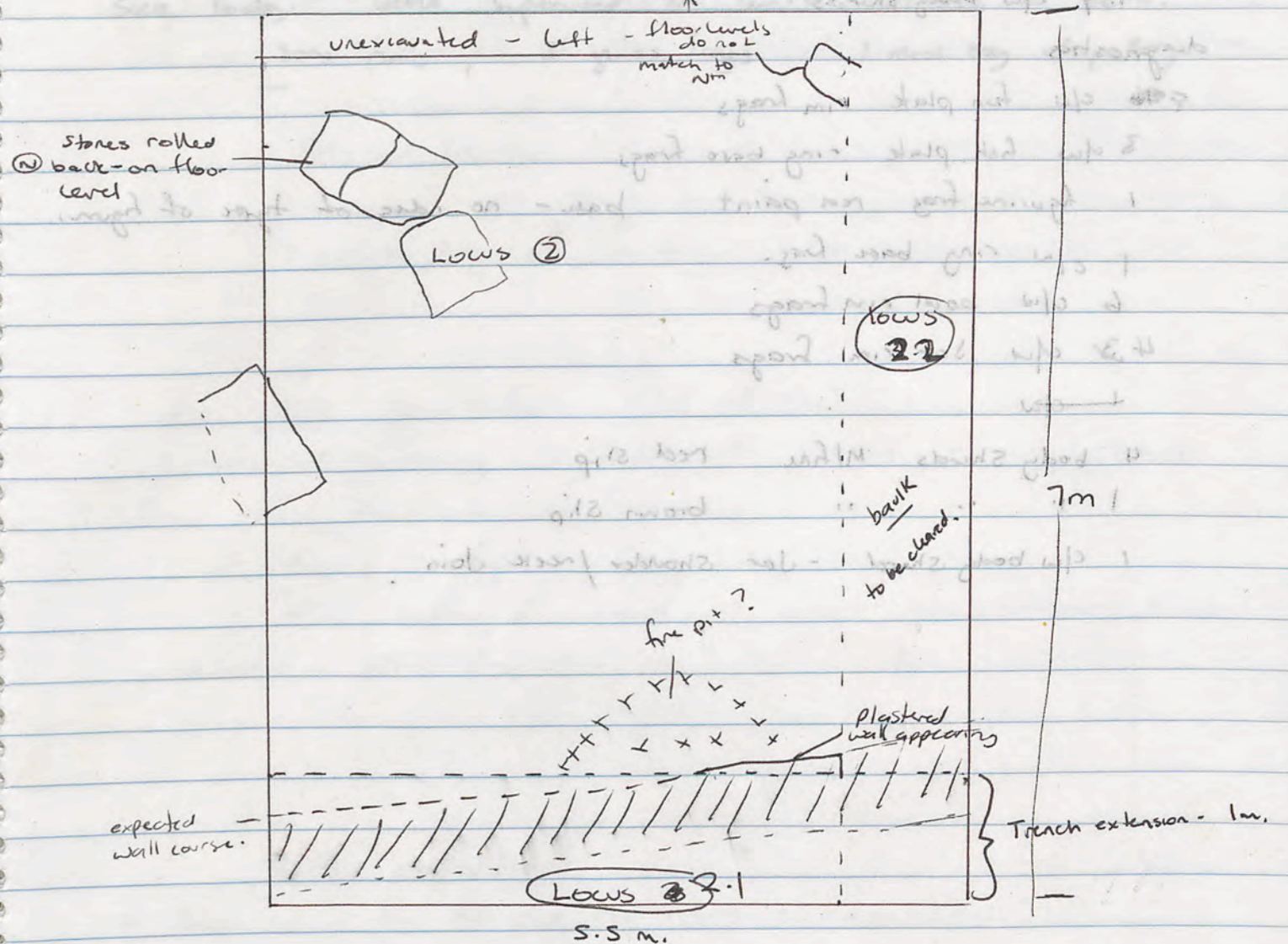
1 clw bowl rim frag

1 body sherd - incised lines (from pottery wheel) - inside - possibly

flat bowl base frag.

(N)

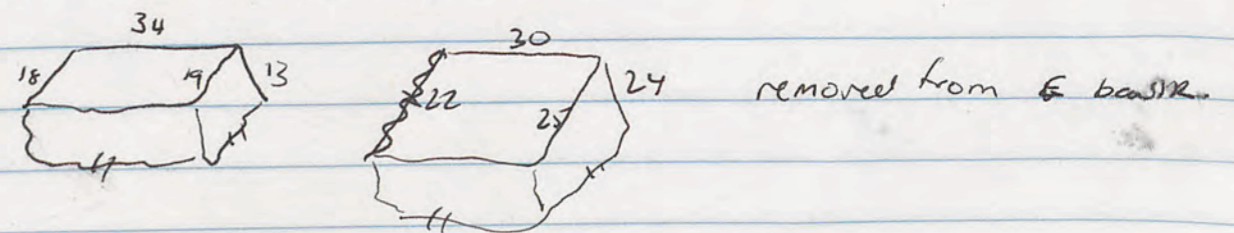
T49 27/9/95 PPT



- locus 2.1 - minimal pottery. * 1 fine glass frag.

clearing locus 2 - Pottery frag sieve like - bagged as small-frag. E-W wall in sth bank is very thick. The 1m extension brings us straight down on top of the wall which is extremely eroded. after 15-20 cm depth excavation discontinued when it was clear that this ~~was~~ was eroded wall sections - (below loose soil).

cont'd clearing E. bank.



locus 2.2 T49 28/9/95 Pottery

139 clw body sherds

diagnostics

- 8 clw fish plate rim frags
- 3 clw fish plate ring base frags
- 1 figurine frag red paint base - no idea of type of figure
- 1 clw ring base frag
- 6 clw bowl rim frags
- 4 Jar rim frags
- 4 body sherds M/fin red slip
- 1 " " " brown slip
- 1 clw body sherd - Jar shoulder/neck join



T49 28/9/95

Sick today. Geoff supervised the cent'd clearance of bank. some nails, 3 glass frags 1 med bag of pottery.

Geoff supervised the cent'd clearance of bank. some nails, 3 glass frags 1 med bag of pottery.

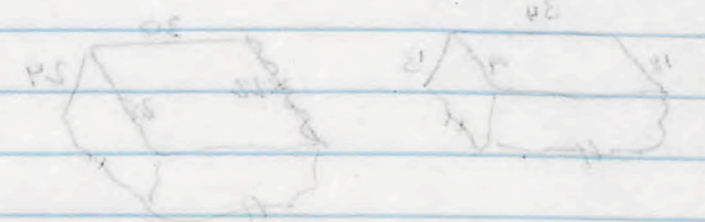
... found some ...

... found some ...

... found some ...

T49 observations

- * high level of ...
- * no ...
- * ...



T49 2/10/95

last portion of bank to be cleared - NE corner of trench.
will require a backfill of the plastered wall section for protection.

- finished trench - exposed wall section in back to
completely remove idea that a doorway exists!
1 small bag of pottery locus 2.2 cont'd.

⇒ T53 new trench (E of T51)

commenced clearing surface of stones - spoil heap
from other trenches on a krop.

found 1 figurine fragment.

other pottery discarded as should have already been
excavated in other trenches.

T49 observations

- * high level of ~~the~~ plate rim frags in diagnostics
- * no bone in trench.
- * 1 fire pit of secondary occupation against 5th wall
- * no doors!

Pottery 2/10/95 T49 - (last)

34 body shreds 1 pitched body sherd.

diagnostics

- 1 clw mortarium bowl rim frag
- 2 clw bowl rim frags
- 1 M/fin body sherd red slip
- 1 M/fin bowl rim frag red + black paint

T53 locus 1. 2.10.95

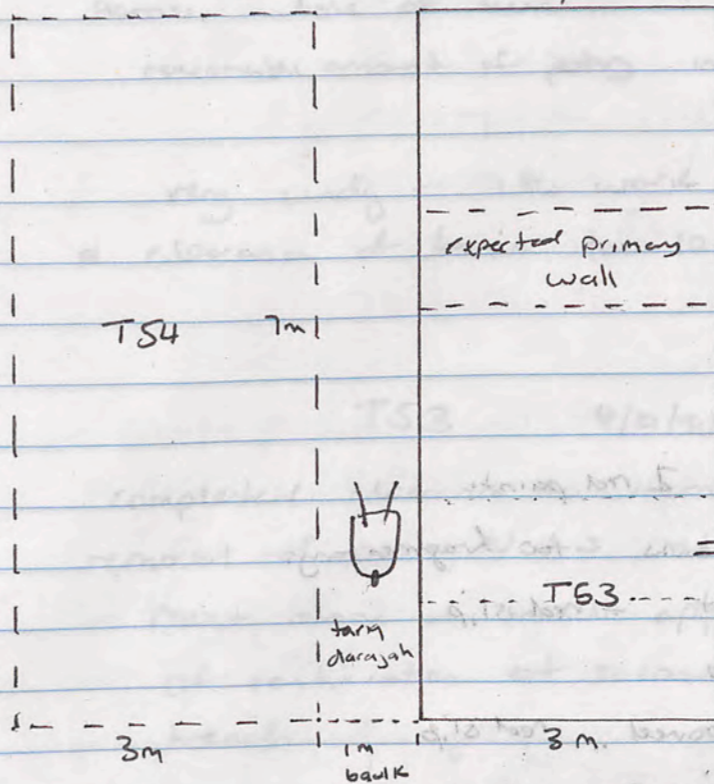
21 clw body shreds

diagnostics

- 1 M/fin body sherd red paint inner / orange + brown outer.

T53

commenced 2/10/95.



expected to find first 3 feet or so with extensive tumble-stratigraphy clear in trench back to Nth. - will be secondary occupation floor in N part of trench!

Possible extension of secondary wall from T51

Small bag of pottery locus 1.

T53 3/10/95 Pottery.

1 large bag of very broken/crushed pottery frags.
diagnostics

- 3 c/w ring base frags
- 6 c/w plate rim frags
- 1 c/w handle frag
- 1 c/w handle stub
- 3 c/w Jar rim frags
- 11 c/w rim frags - bowl
- 1 s/fine rim frag red paint
- 3 c/w echinus bowl rim frags - 2 red paint.
- 3 c/w rim frags - probably bowls too fragmentary.
- 1 m/fine bowl rim frag - upright + red slip
- 2 m/fine body sherds red slip
- 1 m/fine plate frag - grooved, red slip
- 1 c/w body sherd black paint inner + outer.
- 1 c/w body sherd - ribbed.

Pottery 4/10/95 locus 1 (2 bags very fragmented pottery.)

bag 1 - ~~635~~ non diagnostic body sherds.

diagnostics

- 18 c/w plate rim frags
- 10 c/w ring base frags.
- 3 c/w handle frags
- 15 c/w bowl rim frags
- 5 c/w Jar rim frags.
- 2 c/w echinus bowl rim frags
- 4 c/w body sherds ribbed
- 1 c/w body sherd 2 incised lines
- 8 m/fine body sherds red slip, 1 ribbed.

T53 3/10/95

cont'd surface clearance + excavation of approx 10cm depth across whole of trench. No surface indications of walls. reasonable amount of pottery in soil layer.

very windy - little work done today - have almost completed a clearance of trench to 10cm depth.

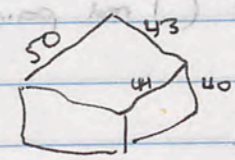
T53 4/10/95

completed. clearance to 10cm depth 7:15. restarted - the removal of soil N→S at another 10cm depth - after photo taken. Most stone in trench appears to be tumble. No sign of continuation of secondary wall from T51 in Sth of trench.

large amounts of pottery - but extremely fragmentary - crushed in tumble?

Many large worked stones in the trench - approx 15-20 showing at 15-20cm depth.

43 x 40 x 50 514



NW corner - removed into Nth trench

TS3 pottery 4/10/95 cont'd.

bag 2 of 2 approx 350 non diagnostic body shreds.

diagnostics

- 2 clw handle frags
- 7 clw ring base frags (1) red slip
- 14 clw plate rim frags
- 5 non descr. pt rim frags (bowl/jar?)
- 6 clw bowl rim frags
- 4 mlfine body shreds red slip
- 1 " " " brown paint
- 2 " " " brown/black paint

TS3 S/10/95 pottery locus 1

633 non diagnostic body shreds - very fragmentary - small pieces with a lot of accretion.

diagnostics

- 20 clw ring base frags
- 1 mlfine ring base frag red slip
- 3 clw mortarium bowl rim frags
- 8 clw handle frags
- 19 clw plate rim frags
- 1 clw amphora toe
- 1 flat footed bowl/jar base frag clw.
- 4 clw jar rim frag single lipped
- 9 clw jar rim frags double lipped (1 red paint)
- 12 clw bowl rim frags
- 2 clw bowl rim frags echinus.
- 7 mlfine body shreds red slip
- 1 " " " ribbed red slip
- 1 clw body sherd incised
- 1 mlfine bowl rim frag shallow bowl/plate? red slip

TS3 S/10/95

- block 88 x 56 x 30 removed into trench to Nth.
- 33 x 46 x 50
- 59 x 48 x 28
- 107 x 57 x 26 (sth)
- 57 x 38 x 60 (60 - length broken both ends)
- 61 x 60 x 37 (sth 61 - broken length)
- 72 x 56 x 36 (61 - broken length)

Possible secondary wall emerging from Sth bank - will be able to determine if it is with another foot or so depth.
 EW wall 3 m from Nth of trench does not appear to be there at this stage. Eroded block in E bank - but no sign of further extension.

very broken + weathered pottery again today 1 large bag.
 no charcoal or bone no small finds.

T53 pottery 7/10/95 locus 1 cont'd.

255 nondiagnostic body sherds. ~~no~~ no cookware / pitched.

diagnostics:

9 clw ring base frags

1 mhu ring base frag red slip

1 plate bowl base - ring clw extremely thin.

1 clw handle frag

1 amphora toe clw

1 fm body sherd red slip

6 clw bowl rim frags

4 clw plate rim frags

1 upright lipped bowl - red paint

1 fish plate rim frag ^{weak} brown paint

1 mhu bowl rim frag red paint

T53 7/10/95.

cont'd levelling trench (sans hajar) to approx 80cm depth E edge of trench 1m west.

Still vast amounts of tumble evident at end below this level. appears that there is no continuation of E-W wall 2m from Nth of trench. ∴ clearing all stones - tumble only.

60 x 48 x 26 very weathered fractured stone

67 x 70 x 37 (x20 broken length) - fractured + weathered

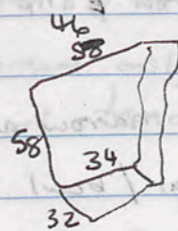
65 x 59 x 60 (x60 broken length) - well preserved.

52 x 35 x 59 (x52 broken length)

60 x 42 x 25 (x60 broken length)

EW wall emerging - extremely eroded + looks like 1 course lower than wall 7m E. trench. 60-70cm wide - not clear as yet due to erosion.

58 x 32 x 46 34.



removed into Nth trench.

JK95. pottery T53
8/10/95.

locus 3 8/10/95. 303 clw body sherds 27 pitthos sherds

- diagnostics
- 2 notarium rim frags
 - 1 clw rim frag with pre crust
 - 6 clw ring base frags
 - 2 clw jar rim frags double lip
 - 9 clw plate rim frags
 - 1 clw bowl rim frag black paint
 - 2 clw handle frags
 - 1 clw bowl rim frag grooved + lipped
 - 1 echinus bowl rim frag
 - 2 rim frags clw under vessel type (V. small frags)
 - 1 m/fine body sherd red slip.

8/10/95 locus 2 bag 1 of 2 - 1 large bag clw body sherds 14 pitthos sherds

- diagnostics
- 7 clw ring base frags
 - 5 clw jar rim frag double lipped
 - 1 amphora tre frag
 - 2 m/fine body sherds red slip
 - 1 clw handle frag
 - 1 clw body sherd drip ware
 - 3 clw bowl rim frags

8/10/95 locus 2 bag 2 of 2. 217 clw body sherds 8 pitthos frags.
many pitched sherds.

diagnostics

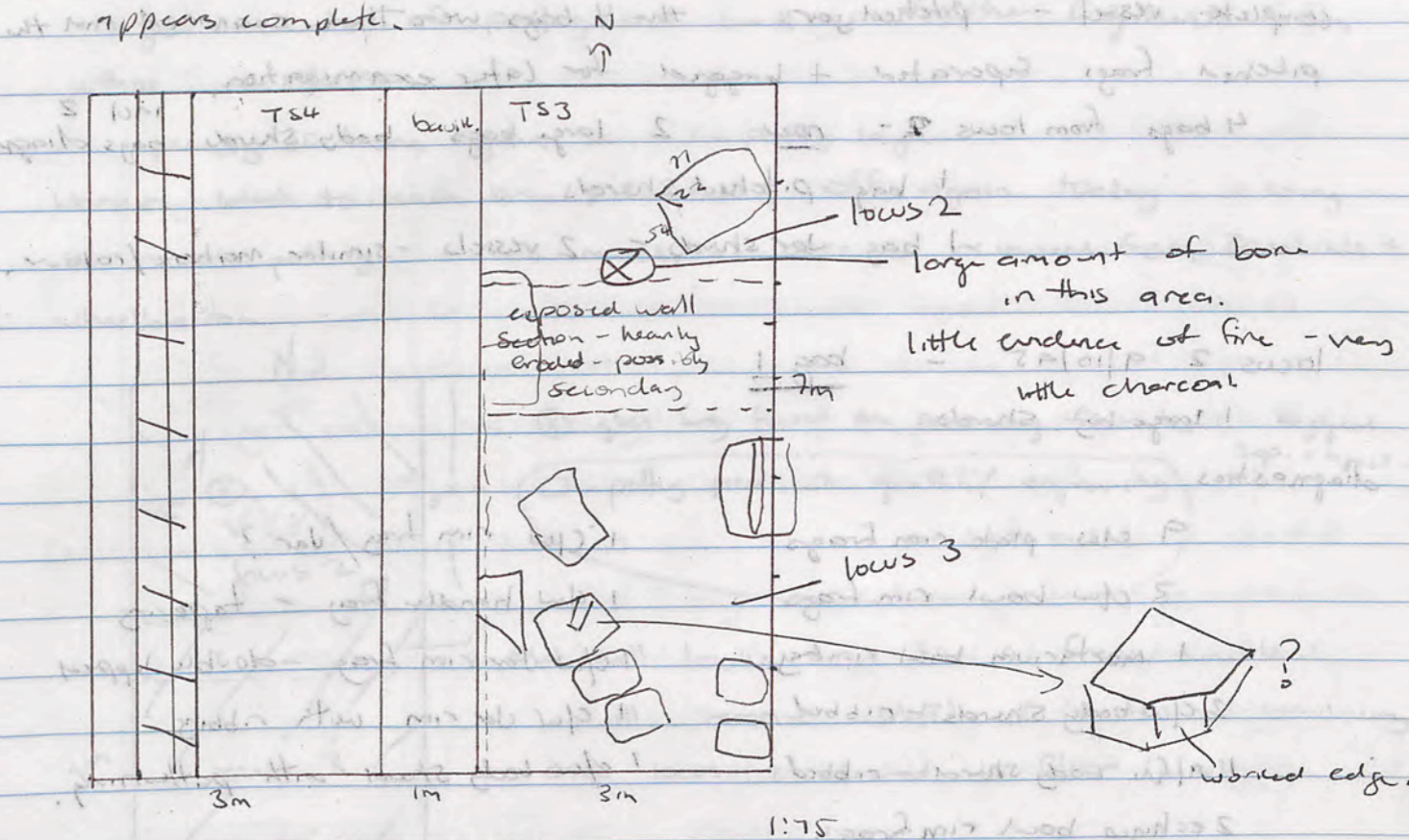
- 5 clw ring base frags
- 3 m/fine body sherds red slip
- 4 clw plate rim frags
- 6 clw bowl rim frags
- 1 clw handle stub
- 1 clw jar rim frag - narrow neck.
- 1 clw amphora handle frag
- 1 clw rim frag jar/bowl?
- 3 clw jar rim frags double lip
- V coarse + poorly lipped - irregular.

8/10/95 locus 2 pitthos frags
28 frags including 1 large rim frag.

T53

8/10/95

Stone 77 x 54 x 22 removed into trench to Nth - good condition



after 9:00 break finished work in locus 3
+ worked only in locus 2 - trying to level at 2nd eng floor
level of trench to north

x iron blade frag found just N of EW wall locus 2 - centre
of trench.

E-W wall looking less + less likely. if it is - is an extremely
poor secondary wall.

large frags of pitthos found in locus 2 - large pitthos loc in
(T54)

locus 2 - 2 large bag pottery 1 zambian pitthos frag

1 med bag bone 1 small bag charcoal

locus 3 - 1 large bag pottery 1 small bag bone

1 small bag charcoal

Small find - 1 blade frag.

T53 9/10/95

4 bags from locus 2 examined. It appeared that there was a complete vessel - pitched jar. the 4 bags were then examined and the pitched frags separated + bagged for later examination.

4 bags from locus 2 - now 2 large bags body shreds incl 2 bags diags.
1 bag pitched shreds
1 bag Jar shreds - 2 vessels - similar matrix/colour.

locus 2 9/10/95 - bag 1

1 large bag shreds

diagnostics

- | | |
|------------------------------|------------------------------------|
| 9 clw plate rim frags | 1 clw rim frag/jar? |
| 3 clw bowl rim frags | 1 clw handle frag - tapering |
| 1 mortarium bowl rim frag | 1 clw Jar rim frag - double lipped |
| 2 clw body shreds - ribbed | 1 clw Jar rim with ribbing |
| 1 m/fine body sherd - ribbed | 1 clw body sherd with patterning. |
| 2 echinus bowl rim frags. | |

locus 2 9/10/95 - bag 2

1 large bag body shreds.

diagnostics

- | | |
|---------------------------------------|---|
| 7 clw plate rim frags. | 4 Jar rim frags double lip. |
| 2 echinus rim frags | 2 clw handle stubs |
| 5 body shreds red slip m/fine | 1 amphora toe. |
| 1 clw handle frag. | 3 clw ring base frags |
| 2 clw bowl rim frags | 1 unguitaria? rim frag. small vessel rim. |
| 1 m/fine body sherd black/brown paint | |

locus 3 - 9/10/95 bag 1

1 med bag body shreds.

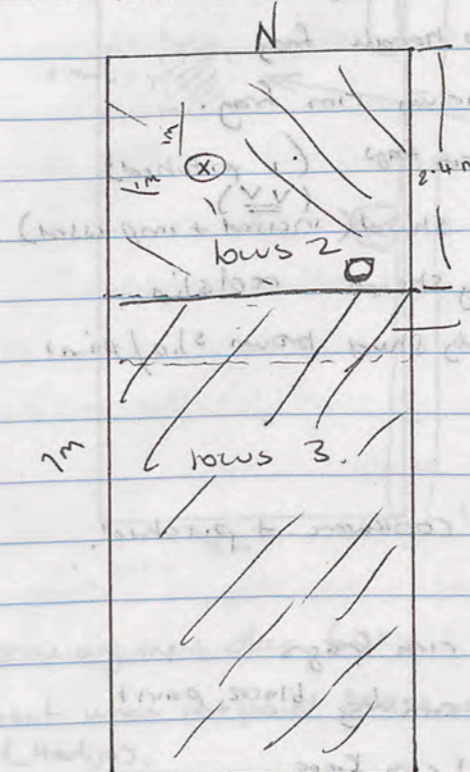
- | | |
|----------------------------------|--|
| 10 clw ring base frags | 2 out-turned bowl rim frags |
| 9 clw plate rim frags | 1 m/fine body sherd red-slip |
| 1 clw Jar rim frag double lipped | 1 clw body sherd - incised parallel lines (4). |
| 2 bowl rim frags | |

17. 0... T53 9/10/95

1C.

could clearing locus 2 to secondary occupation floor level. large amounts of pottery as well as further fragments from pitbas of 8/10/95.

plenty of bone again in soil + pottery layer workers seem to have brains switched off again today - missing so much pottery - as much as possible recovered from Zambels + wheelbarrow.



(X) glass frag found on secondary floor level. bagged Sep. object.
□ - pottery piece with graffiti/engraving on both sides.

EW wall looks more like a freak tumble. - will remove wall(?) if it is not convincing once locus 2 cleared to floor level.

large pieces of a thin storage jar appearing along W side of trench along base of large stone block (carved slab) in bank. Soil very soft.

wall E/W removed - after clearing to floor level it was evident that it was not a wall - or perhaps an extremely poorly constructed one. A worked block adjoining N/S wall on W. bank causing most of the confusion. Most other stone in the wall? was extremely eroded/poorly packed. Floor level continues under.

4 large bags of pottery from locus 2. - looks like enough shreds for complete pot - pitched interspersed between the 4 bags. 1 med bag of bone. 1 small bag charcoal. could getting bone in locus 3.

T53 T53 pottery 11/10/95.

- recorded 3 bags of pottery. cannot find 1 bag. have bag 2 of 3 and 3 of 3 only.

bag 2 of 3 - locus 3 11/10/95.

1 large bag body sherds, cookware + 9 pitched body sherds.

diagnostics

- | | |
|----------------------------------|--|
| 19 clw plate rim frags | 1 amphora toe frag. |
| 1 clw fish plate (profile) | 1 clw strap handle frag |
| 10 clw ring base frags | 1 clw mortarium rim frag. |
| 1 clw Jar rim frag black paint | 2 clw Jar rim frags (1 pitched) |
| 5 clw bowl rim frags | 1 clw body sherd (incised + impressed) |
| 2 m/fine bowl rim frags red slip | 5 m/fine body sherds red slip |
| 1 m/fine body sherd - black slip | 1 m/fine body sherd brown slip/paint |

bag 3 of 3 locus 3 11/10/95

1 med bag clw body sherds - a few cookware + pitched.

diagnostics

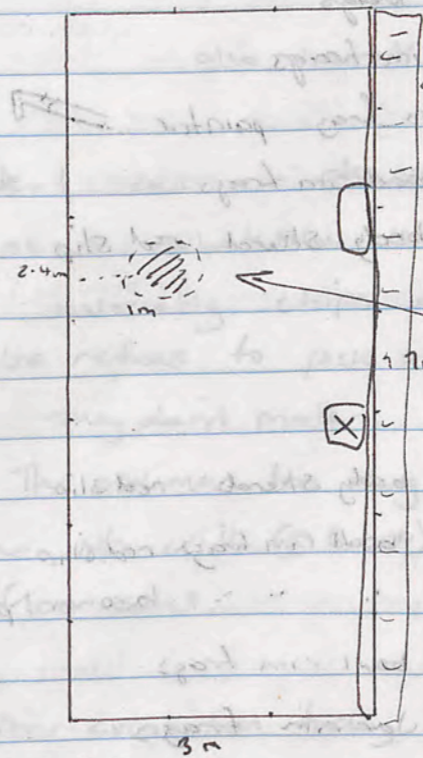
- | | |
|--------------------------|----------------------------------|
| 13 clw plate rim frags. | 3 clw Jar rim frags |
| 5 clw ring base frags. | 1 clw plate rim frag black paint |
| 1 m/fine bowl rim frags | 4 clw bowl rim frags |
| 1 clw body sherd incised | 1 m/fine body sherd red slip. |
| 1 clw body sherd incised | |

T53 11/10/95.

cont. clearing at secondary floor level in locus 3 - working from N to S.

T53 today.

NW corner depth to secondary floor - 87cm
NE (from top exposed wall course) 49cm.



tumble believed to be secondary wall removed 9/10/95. to sth of this tumble a rubbish/fire pit became evident.

* bag 1 of locus 3 pottery - includes 1 sherd of the same material/vessel that had the inscribed graffiti from 9/10/95. yellow matrix/fine with degraded brown paint.

⊠ floor level - bead made from black stone

- some argument over find in shape of a duck upset when not paid baksheesh (Hadiza). bagged as sep. object.

lamp fragment found in floor level of locus 2 - just Nth of locus (removed) wall. bagged as sep. object. red paint + stippled + ribbed design.

3 bags pottery

2 small finds - 1 bead 1 lamp frag

1 med bag bone

T53 pottery 12/10/95.

locus 3 - 12/10/95. 1 med bag body sherds 4 pitched.

diagnostics

- 1 clw handle stub
- 2 clw jar rim frags (double lip)
- 1 m/fine plate rim frags black paint
- 2 clw out-turned bowl rim frags
- 1 m/fine bowl rim frag red slip
- 6 clw ring base frags
- 10 clw plate rim frags
- 1 plate rim frag painted
- 2 clw bowl rim frags
- 1 m/fine body sherd red slip

locus 4 12/10/95

1 large bag clw body sherd.

diagnostics

- 95 clw plate rim frags
- 13 clw ring base frags
- 1 m/fine ring base frag - red slip
- 2 clw handle frags
- 1 clw handle stub
- 2 clw mortarium rim frags
- 3 m/fine body sherds red slip
- 3 m/fine bowl rim frags red slip
- 1 " " " " brown paint
- 6 clw bowl rim frags
- 2 clw jar rim frags
- 1 clw bowl rim frag weak red paint
- 1 clw flat bowl base fragment

T53 12/10/95

clearing at 2ndary floor level S end of trench.

block timber removed. 70 x 60 x 30. moved to Nth.

59 x 50 x 33.

also 1 small scorpion under first block.

⊗ Next season - do not employ Hadiya - does not think at all about what she is doing + when left alone for a few moments (invariably) chips away at the walls or digs holes in the floor. - also refuses to pick out small pieces of pottery from the soil, saying that they don't matter.

The old man has dug yet another pit through the floor today against the N/S wall (E bank) despite being told 6 times today to clear at the floor level.

Poor excavation today has largely ruined the floor level in SE part of trench. - despite being constantly told where + what to dig. - have lost an area approx 1m x 1m in corner.

finished clearing at floor level. - end locus 3.

in Nth sector of trench - floor level removed to find primary floor.

all of locus 2 cleared to new floor level - locus 4.

~~2ndary fl~~ initial floor level higher than in trench to Nth! hitting label very early.

TS3 pottery 14/10/95

TS3 locus 4 - 14/10/95

167 clw body sherds

diagnostics

- 31 clw plate rim frags
- 2 clw mortarium rim frags
- 6 clw ring base frags
- 1 clw handle frags
- 7 clw bowl rim frags
- 1 clw body sherd ribbed.
- 1 clw Jar rim frags
- 1 m/fine plate rim frags ^{wear. red paint}
- 3 m/fine body sherds red slip
- 3 m/fine bowl rim frags red slip
- 1 clw echinus bowl rim
- 3 unidentified rim frags (1 bowl, 1 plate?)

TS3/TS4 baulk. 14/10/95.

354 clw body sherds.

diagnostics

- 7 clw ring base frags
- 1 clw flat/footed base/(bowl) frag
- 1 clw handle frag
- 5 clw bowl rim frags
- 1 clw Jar rim frag
- 7 m/fine body sherds red slip
- 2 m/fine body sherds black slip
- 7 clw plate rim frags
- 2 clw echinus bowl rim frags
- 3 clw out-turned/mortarium like bowl rim frags

cont'd clearing to initial floor level in Nth end of trench (locus 4) secondary floor in trench indicates that this was an extensively used domestic area. U-dark soil, large amounts of bone + extremely fragmented pottery.

Soil darkening but very little charcoal usable in soil.

stones projecting from W baulk - beginning locus 2 - seem to be surrounded by a large fire pit? / dark/burnt soil level around + cutting into baulk.

excavating W baulk - between TS3/TS4.

- 1 med bag pottery - locus 4
- 1 med bag bone - locus 4
- 1 med bag potter TS3/54 baulk.
- 1 nail frag locus 4.

T53 15/10/95.

(2 bags) T53/T54 bank bag 1 of 3.

508 clw body sherds 0.1

diagnostics

- 6 clw handle frags
- 4 clw handle shbs
- 17 clw plate rim frags
- 10 clw ring base frags
- 6 m/fine body sherds red slip
- 2 clw double lipped jar rim frags.
- 15 clw bowl rim frags
- 3 echinus bowl rim frags clw. red ps. nt
- 2 clw rim frags - pie crust - 1 with handle stub.
- 2 clw body sherds ribbed.

T53/54 bank bag 2 of 3

503 clw body sherds.

diagnostics

- 15 clw plate rim frags
- 14 ring base frags
- 5 clw double lipped jar rim frags
- 1 clw jar rim frag
- 2 clw ring frags - too small to determine
- 1 clw body sherd - ribbed
- 4 clw handle frags
- 6 clw echinus bowl rim frags
- 7 clw bowl rim frags
- 9 clw bowl rim frags - out-turned rim
- 6 m/fine body sherds red slip
- 2 clw body sherds green/yellow glaze

T53/54 bank bag 3 of 3

397 clw body sherds -

diagnostics

- 13 clw ring base frags
- 2 clw body sherds - ribbed
- 6 clw handle frags
- 6 clw jar rim frags (4 double lipped)
- 2 clw mortarium rim frags
- 3 echinus bowl rim frags
- 1 m/fine plate rim frag red slip
- 5 m/fine body sherds red slip
- 29 clw plate rim frags
- 10 clw bowl rim frags out-turned.
- 9 clw bowl rim frags
- 1 clw body sherd - stopper?

T53 15/10/95.

cont'd clearing bank between T53/T54. - will see if E-W
 will continue into bank - is in T54 - removed as rubble in T53
 - scored a new worker from Judith - Ahmed quayas shugul. ✓

bank is being removed against all logical planning. despite
 instruction, they have all confrenced and decided to excavate from
 Sth end to Nth. This makes removal of soil and large rocks
 extremely difficult. - they have done this so that they are facing
 into the wind when working!

Finally convinced them to work in other areas as well so that
 more than 2 people can work at any one time.

Finding large amounts of encrusted + small frags of pottery of
 very poor quality - mostly coarse ware - little painted or slip.

- will be leaving the dark soil / ashy soil just Nth of removed clw
 wall in W bank - as probably related to oven in T54.

Salem not working much today - left hand injured in moto-bike
 accident in village - hit a dog,

Mahderhi
 Ahmed Ahmed.

01/11/1995

TS3 pottery 16/10/95

TS3/54 bank pottery bag 1 of 2 16/10/95

1 large bag body sherds including pitched + cookware + pitthoi frags

diagnostics

- 20 clw plate rim frags
- 1 m/hw plate rim frag red slip
- 1 m/hw plate rim frag black paint
- 13 clw ring base frags
- 1 clw flat footed bowl base
- 1 clw pitthos/large jar rim frag
- 4 clw double lipped jar rim frags
- 1 clw jar neck frag - (no rim)
- 2 clw jar rim frags
- 3 clw mortarium rim frags
- 4 m/hw body sherds red slip
- 2 m/hw bowl rim frags 2 red slip, 1 black paint
- 1 clw echinus bowl rim frag
- 3 clw handle frags
- 1 clw handle stub

TS3/54 bank 16/10/95 bag 2 of 2

1 large bag body sherds

diagnostics

- 5 clw ring base frags
- 3 clw handle frags
- 21 clw plate rim frags
- 3 clw jar rim frags
- 1 m/hw bowl rim frag black paint
- 1 clw mortarium rim frag
- 6 m/hw body sherds red slip
- 1 m/hw bowl rim frag red slip
- 2 m/hw body sherds - ribbed 1 red slip
- 3 clw out-turned bowl rim frags
- 3 bowl rim frags
- 1 frag - ribbed clw

TS3 16/10/95

22

clearing bank still - will be clearing it at the lower floor level of TS4.

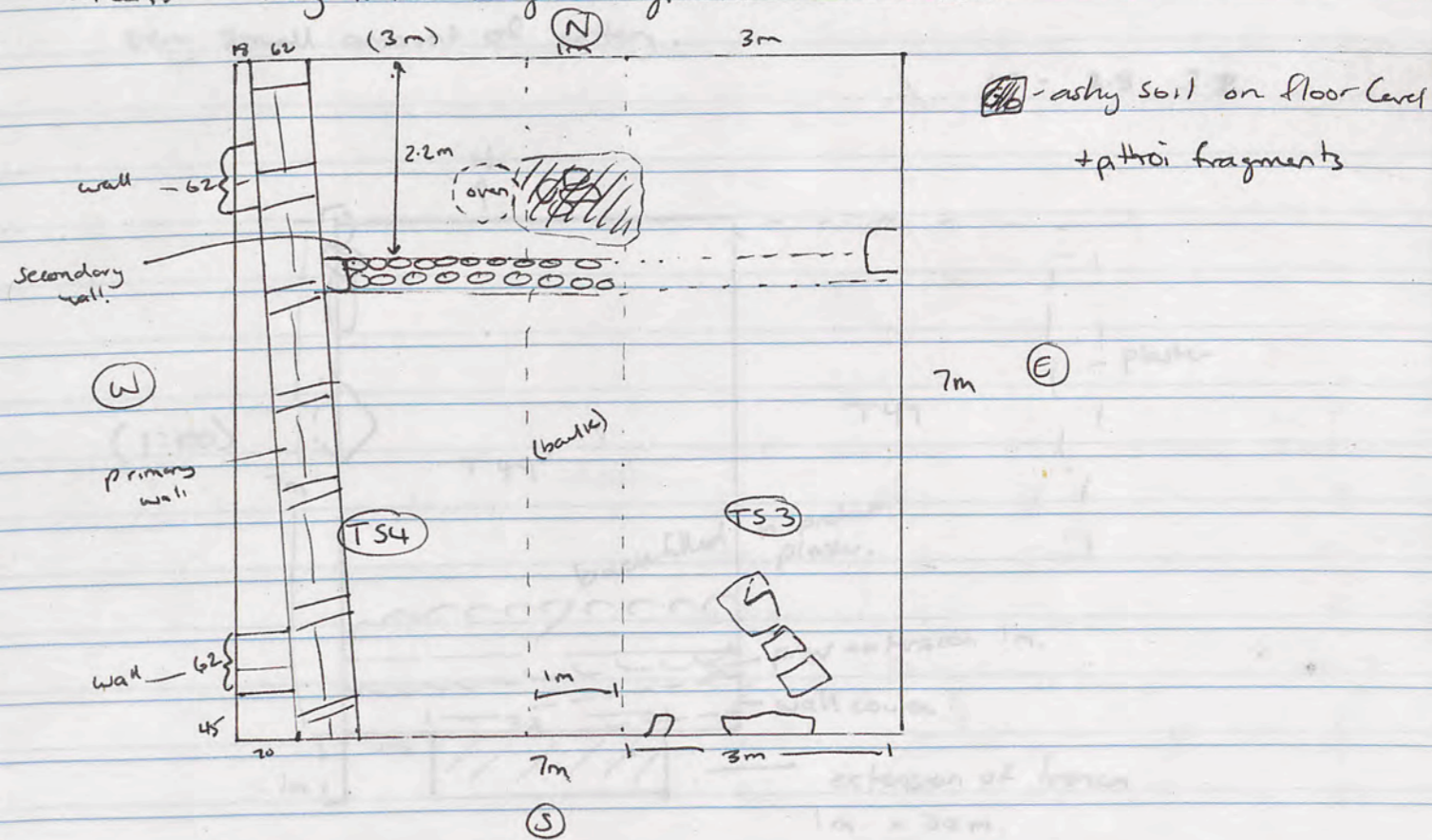
finishing in this trench end of today - will be clearing a further metre south of T49 to expose external wall + find foundation trench.

Brig will be using his workers until cob wednesday to clear bank.

large amounts of rubble in bank, though badly weathered/fractured blocks.

E-W wall coming through bank very clearly. It is now obvious that the extension of this wall into TS3 was removed in error.

of oven in TS4 - very ashy dark soil - soil sample taken. very little large fragments of charcoal.



T49 extension 5th

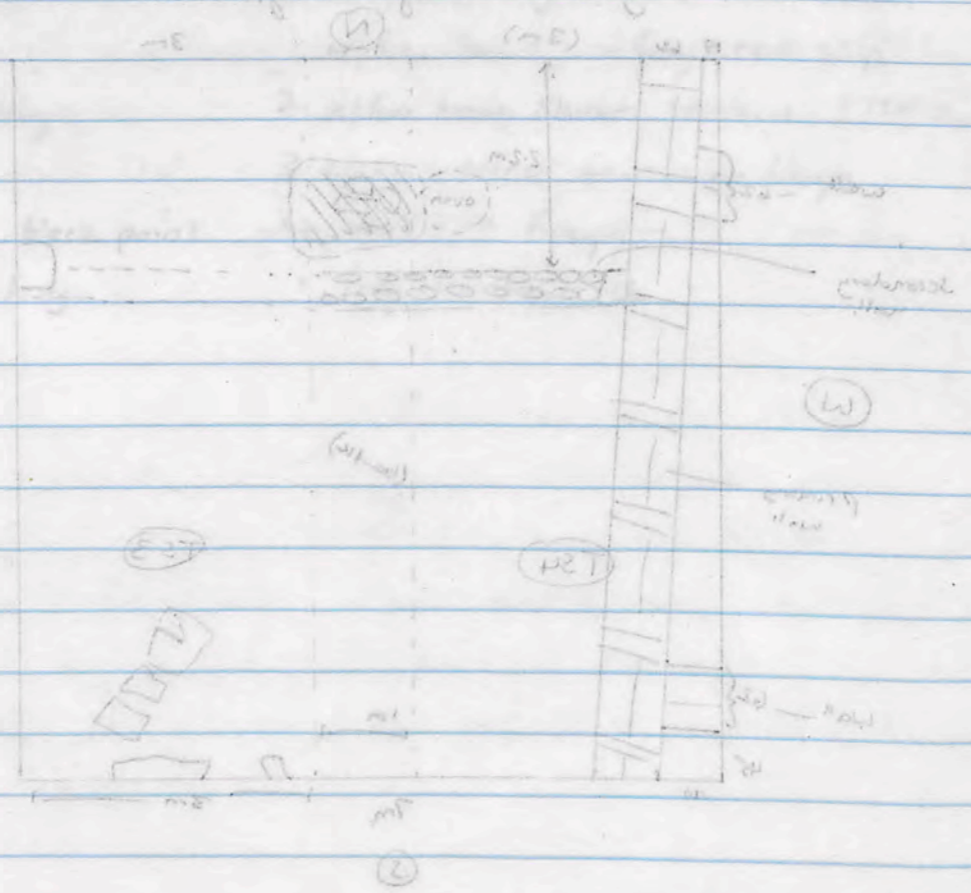
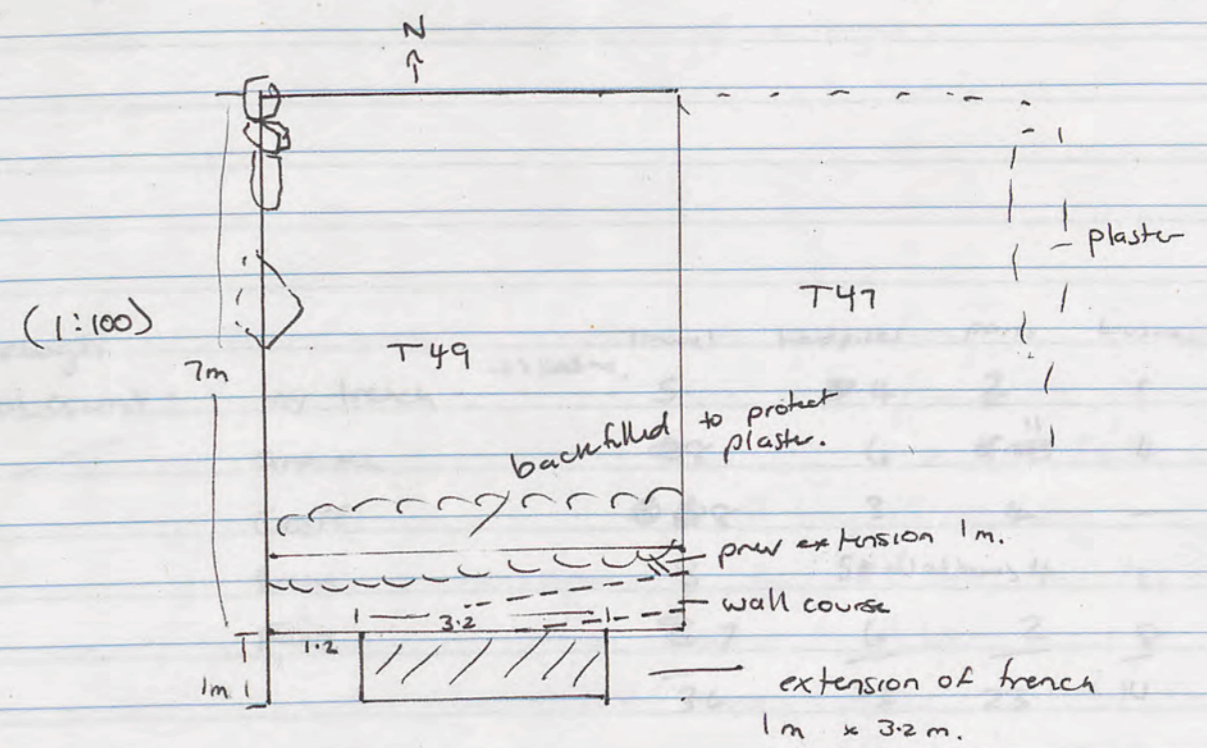
a 3m section approx centre of trench width x 1m wide excavated - aim to reveal outside wall dimensions + find foundation trench - (if outside wall).
 - expect little pottery + little chance of finding a good floor level.

- Trench now 8m x $\frac{4}{5}$ 5m with southern extension not completely across trench width (ie only 3m). If time permits the trench will be squared off.

outer blocks of wall appear to be extremely eroded.
 - having them dig deep at south end + work back to expose wall with minimal damage to weathered stone.

finding small amounts of weathered plaster white/yellow/red consistent with previous findings on earlier 1m extension of ~~the~~ trench. very small amount of pottery.

1.2 - 2.8, 3.2



15/10/95

PTT

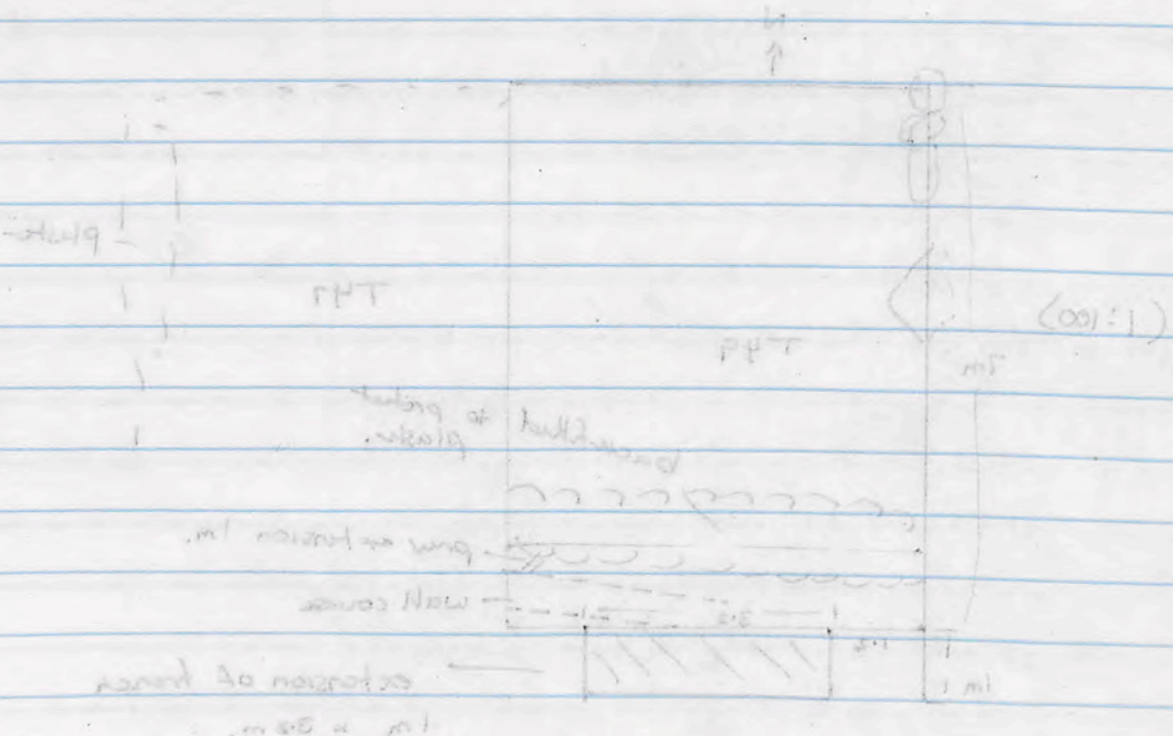
3 m section of trench
 excavated - 1.5 m deep
 (at other end of trench)
 expect little rubble - little rubble at bottom of trench

1.5 m deep
 1.5 m deep
 1.5 m deep

1.5 m deep
 1.5 m deep
 1.5 m deep

1.5 m deep
 1.5 m deep
 1.5 m deep

1.5 m deep

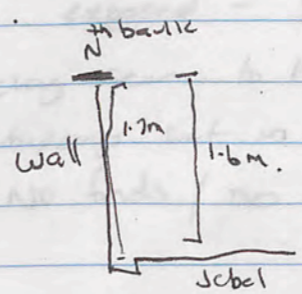


T49 18/10/95

lost 3 workers today -
 Sabha - family member sick
 Yahyeh + Hadiya - child very sick in Haleb
 hospital - said was possibly dying. Yahyeh may be returning a little
 later - (arranging money + transport).

- Yahyeh not returning.

- have hit Jebel at quite a depth - deeper than expected. The
 external wall even at this depth is quite solid.
 - have stopped work at W end of trench - danger of bank
 collapse.



1st course of stone in well is
 carved Jebel, not indiv. blocks.

(disregard measurements - after sweeping, is really a
 hard packed ~~stone~~ - level of chippings + clay => see 19/10/95)

rough	Travel	handpicks	pans	brushes	zambels.
Tool count - My trench - +1 Kazne.	5	4	2	1	5
Aracme	8	6	4	4	14
Geoff.	8	3	4	-	7
Brian	8	5 + (1 at home)	4	1	7
Faerz.	7	6	2	5	6
	<u>36</u>	<u>23</u>	<u>23</u>	<u>11</u>	<u>39</u>

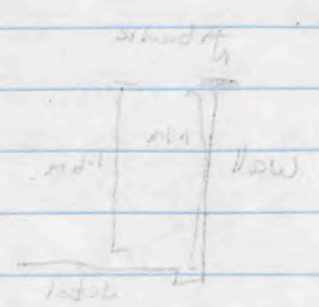
↑
 1 at home - ok
 11 to be borrowed
 from Brian.

2/10/95 PPT

lost 2 metres of top layer
 of the secondary floor level
 (secondary floor level - 20cm)

secondary floor level - 20cm

secondary floor level - 20cm
 secondary floor level - 20cm
 secondary floor level - 20cm



(secondary floor level - 20cm)
 secondary floor level - 20cm

2	1	5	10	2
4	1	11	2	12
5	1	4	3	13
7	1	1/2	8	14
2	2	5	2	15
10	11	15	22	16

secondary floor level - 20cm

Tools T49 extension

19/10/95

Superusing T53/T54. nail/tack fragment SE corner of trench on secondary floor level.

T49 - what was believed to be Jebel yesterday - is in fact a very hard packed clay chipping floor/packing. - Jebel was a further 10-15cm below. I have left the hard-packed floor level in the W portion of the trench extension.
 ∴ only clearing to Jebel level for Eastern 2m of extension.

Jebel - exposed - slopes away to E. - a hard packed red/brown clay seems to have been used to get a level surface. Many small chippings set in the clay.

No finds / no pottery / no bone / no anything today.

- 1st roll Kodak - Shots of T52, T54, T53, T51, T57 + T49 extension. + couple of villagers,

- from T53 - 2 small glass frags
- 1 iron nail/tack.
- 1 med bag of bone - from early deposit
- 1 small bag of pottery.

- in same condition as was on 18/10/95 - just had SE corner of T53 cleared to floor level - bone and pottery recovered from the straightening of the floor level cut between T53/54.

4700 235
 48
 7050

D. Q. Total.

N for Nakoush	18
M for Mustateen	19
F for Forshey.	12 + 2x $\frac{1}{2}$ s
D for Dustpans	10 + 2 without handles
Azma Kabeer	3
Hammer	1
Metre sticks	4
Long handled shovels	2
Zambil	32
Darrāja	1 (green) H. J. Jackson

Tools.

acropolis 19/10/95
in store room

38 mousterine
21 Nakoush
14 brushes
15 dust pans (good)
8 dust pans (weak)
37 Zambil
3 shovels
1 pick
3 metre sticks + 1 broken
4 wheel barrows + 1 to yahyeah

⊗ lost on 18/10/95 - 1 pick + 1 block splitter.

Tools

19/10/07
in store room

38

31

14

12

8

37

3

1

3

4

21

10/10/07 - 1 box + 1 box split

10/10/07

10/10/07

Anna Kabour

3

Hanna

1

Mette chicks

4

Long handled snare

2

Cambal

3

Danga

1