

Acropolis 1993

SPECIAL  
T.36  
T40 &

T.45  
**LECTURE  
BOOK**

JK93 T40 (Lyle & Ed)

JK93 T45 (" ")

L. Smith

&

E. Clarke

*Conrad*  
p.7 & p.7, 11

*x2*

*Victory*  
~~Monday Con T 26 11/11/93 p.7~~  
" " " 403 19/11/93 p.7

VS 106A

**A4**

404  
\$2.05



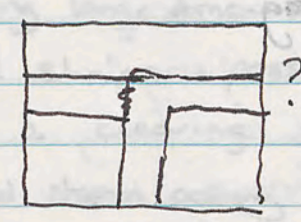
JK93 T40  
(Area)

16/9/93

EPINH OPT

→ TRENCH<sup>1</sup> appears to have been disturbed at some stage, with a restriction for dressed stone perhaps being a reason. A large mound of disturbed loose earth, containing a few sherds, to the north end of the trench, was removed by Kazama Kabir and shovel. {locus [1] <sup>rotting</sup> sherds}

- It is expected that the trench will be divided by two intersecting walls one coming from the south and one from the east (this one being the external wall).



- after removing a substantial amount of the mound, the smaller tools were put to use; the soil being removed and larger rocks left in situ.

locus [2]: surface sherds over entire trench

- nail and small glass fragment were uncovered in locus [2], just under surface 2 from west bank & 1.5 m from south bank.

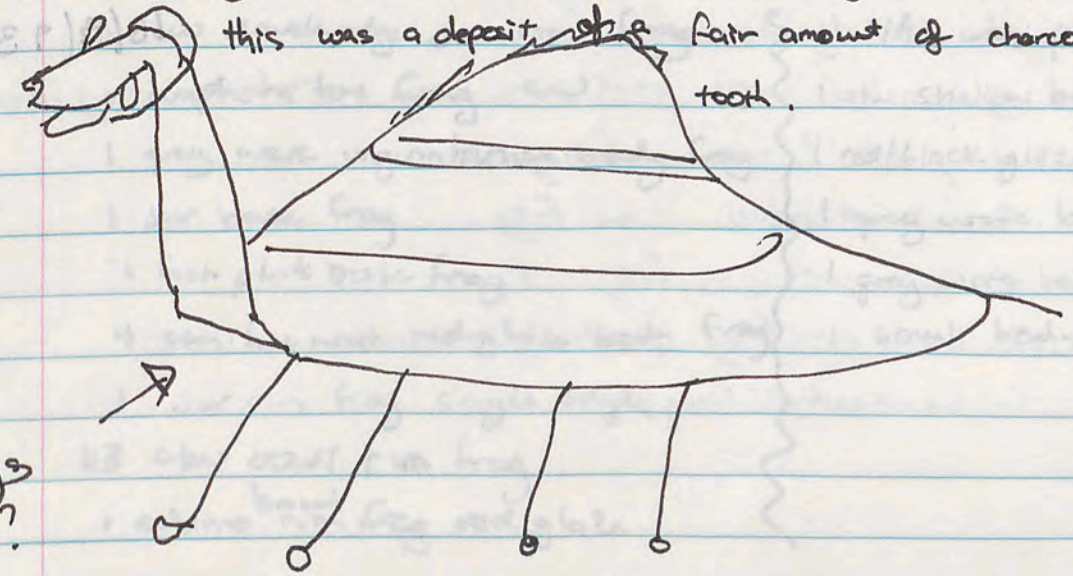
bank on S<sup>th</sup> of trench extremely thin due to proximity of prev. trench. Most of this bank will be lost until we reach floor level.

- a piece of plastic was uncovered in locus [2] 2 m in from west and 2 m in from south bank, approx 20 cm down indicating that the soil has been fairly recently disturbed. Next to

this was a deposit of a fair amount of charcoal and bone with a tooth.

Yahiah

yebuebis  
moose?



T40 16/9/93

locus 2

medium amount of coarseware body sherds

diagnostics

- 1 coarseware amphora toe frag
- 2 coarseware body frags with holes (not all the way through)
- 2 c/ware fish plate base frags
- 1 large fish plate base frag
- 1 plate c/ware rim frag
- 1 double rim jar frag
- 23 c/ware bowl rim frag

T40 16/9/93

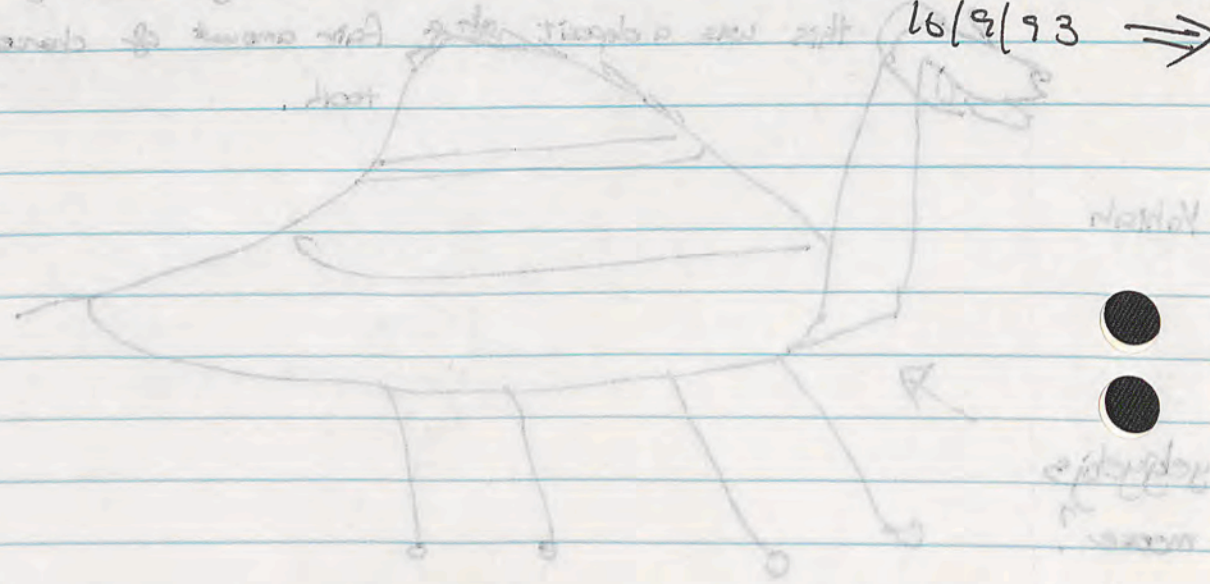
locus 1

Small amount of body sherds c/ware

diag.

- 1 c/w amphora toe frag
- 4 double rimmed jar rim frag c/w
- 1 c/w fish plate base frag
- 2 shirley (c/w) bowl base frag
- 1 c/w plate rim frag
- 1 semi fine ware black glaze body frag
- 1 c/w bowl rim frag

16/9/93



Sat 18/9/93

SK93 T40

- Continued clearing locus 12, (ground very disturbed) levelling trench to north bank/corner levels. Pottery recovered in fairly large amounts. → a ~~small~~ foot of a basalt ~~frag~~ basin (round) was found 1.9 m from east bank and 2m from north bank.

→ a piece of riveted metal was found 50cm to the east of the basalt piece, on the same level.

still finding large amounts of evidence of recent disturbance - metal strips - possibly from a drainage and a plastic bag. in locus 2 clearing.

→ an odd shaped pottery piece with ground/scratched pattern on it was uncovered 1m from west bank & 2.5 metres from North bank.

A lot of pottery was uncovered from the levelling of the trench, with a fair amount of bone and charcoal.

Removed large piece of faced stone, possibly from tumbled walls.

16/9/93 locus 2 Shards T40

medium amt of cw body frags with pitch + cooking ware

diag

- 2 ady semifine ware red glaze plate base frags 3.15cm diam base
  - 2 cw double edge jar rim frag
  - 1 amphora toe frag cw
  - 1 grey ware unguitarian body frag
  - 1 jar base frag
  - 1 fish plate base frag
  - 4 semi fine ware red glaze body frag
  - 1 jar rim frag single edge
  - 43 cw bowl rim frag
  - 1 echinus bowl rim frag red glaze
- 1 s/fine ware plate rim frag red glaze
  - 1 c/w shallow bowl rim frag
  - 1 red/black glaze body frag?
  - 1 grey ware body frag
  - 1 grey ware bowl rim frag
  - 1 bowl body frag (tapering)

18/9/93 T40

locus 2 cont'd

large quant of cooking ware

large amounts of c/w body sherds

diagnostics

3-7 c/w fish plate base frags

2 double rim jar rim frags c/w

3 semi fine red glaze body frags

3 echinus bowl rim frag

1 c/w amphora toe frag

1 amphora handle frag

1 ~~c/w~~ c/w plate rim frag

1 c/w jar rim frag

5 v/small c/w rim frags

1 semi fine ware bowl rim frag red glaze

1 greyware bowl ~~base~~ frag (unc)

locus 2 cont'd again

large amount of c/w body sherds

- large quant of cooking ware

diag

8 c/w fish plate base frags

3 c/w amphora(?) handles

1 greyware bowl rim frag

1 double rim jar frag c/w

2 green? body frags

1 cooking bowl rim frag

3 semi fine ware bowl rim frag red+black glaze

1 plate? rim fragment

2 echinus bowl rim frag

1 c/w jar rim fragment

1 bowl rim frag with lines (double)

6 undecided frags

18/9/93 T40

locus 2 cont'd

large amount of c/w body sherds

diagnostics

3-7 c/w fish plate base frags

2 double rim jar rim frags c/w

3 semi fine red glaze body frags

3 echinus bowl rim frag

1 c/w amphora toe frag

1 amphora handle frag

1 ~~c/w~~ c/w plate rim frag

1 c/w jar rim frag

5 v/small c/w rim frags

1 semi fine ware bowl rim frag red glaze

1 greyware bowl ~~base~~ frag (unc)

locus 2 cont'd again

large amount of c/w body sherds

- large quant of cooking ware

diag

8 c/w fish plate base frags

3 c/w amphora(?) handles

1 greyware bowl rim frag

1 double rim jar frag c/w

2 green? body frags

1 cooking bowl rim frag

3 semi fine ware bowl rim frag red+black glaze

1 plate? rim fragment

2 echinus bowl rim frag

1 c/w jar rim fragment

1 bowl rim frag with lines (double)

6 undecided frags

T40 Sun 19/9/93 locus 2

bag 1 of 2

large amount of cw body sherds - some cookware + some with pitch.

Diagnostics

- 2 cw large base jar frags
  - 2<sup>cw</sup> amphora handle frags
  - 2 double edge jar rim frags.
  - 1 fish plate base frag (black glaze)
  - 1 sem. fine ware fish plate base frag red glaze
  - 2 echinus bowl rim frags
  - 2 cw plate rim frags
  - 1 cw jar rim frag
  - 2 semifine ware red glaze body sherds
  - 1 sem. fine ware bowl rim frag
- 16

locus 2 - bag 2 of 2

large amount of cw body sherds some cooking ware + pitched.

diagnostics

- |   |                                 |   |
|---|---------------------------------|---|
| 4 <sup>3</sup> cw storage jar large rim frags | } 2 cw single edge jar rim frag |   |
| 2 cw handle frags                             |                                 | 1 cw jar base frag                        |
| 1 unguitarian toe frag                        |                                 | 1 echinus bowl rim frag                   |
| 1 amphora toe frag                            |                                 | 1 semifine ware red glaze body frag       |
| 2 cw double edged jar rim frag                |                                 | 1 semifine ware red glaze plate base frag |
| 1 cw base frag (near complete)                |                                 | 1 cw cup frag (lwe)                       |
| 8 cw fish plate base fragments                |                                 |   |
| 1 plate rim frag                              |                                 |   |
| 1 pie crust rim (c/ware)                      |                                 |   |
- 26

المساحة  
المكتشفة

Sun 19/9/93 T40 Acropolis

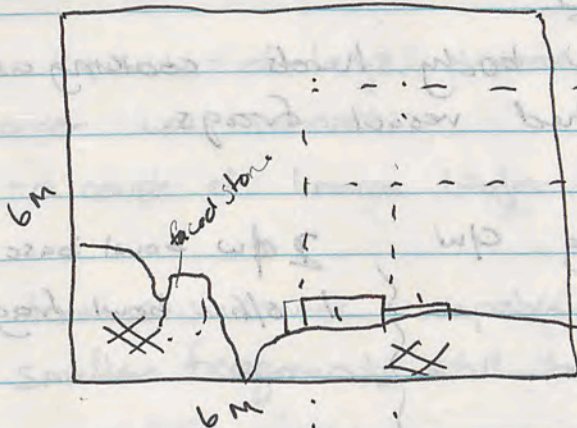
glass frag found 2 1/2 m from G baulk 1 1/2 m from Sth.

still vast quant. of pottery in locus 2 (disturbed site) spoke to Creeme regarding this - most likely due to the clearance of prev. trench and robbing for stone. As the adjacent room excavated previously was a kitchen and large pottery deposits found - most found in the upper layers of T40 are from the southern room. Charcoal and bone abundance supports this theory. a lot of pottery is obviously burnt. small nail frag found 1.5 m from S 1 m from E

part of N/S wall appears to be emerging approx 60cm below ground level 1.5m from S baulk, 2 1/2 m from E.

2 coin frags 1m from S baulk 3m from E T40.8 = 93.235

Constantius II (337-361) or more likely P. II 93.166 Alex II Zebena 93.167 Honorius



\* uncleared locus 2

① worked stone in line with N/S wall to south

found a darker layer of soil towards the W side of the trench which should cover whole of trench. we have set this depth limit to (locus 2) and levelling of trench.

20/9/93 T40 locus 2

large quant of clw body sherds + cooking ware + pitched

diag

7 cw jar base frags

2 fish plate base frag

1 cw handle frag

2 amphora toes

1 large clw bowl rim frag

3 echinus bowl rim frags

2 large bowl rim frags

7 clw bowl rim frags

1 grey ware body frag

1 clw plate rim frag no glaze

1 body sherd ribbed inside and out

4 semi fine ware red glaze body frags

1 fine ware bowl rim frag

2 semi fine ware black slip bowl rim frag

1 plate rim frag semi fine red glaze

7 s/fine ware <sup>plate</sup> rim frag ridged + red + black glaze

20/9/93 cont'd locus 2

huge amount of clw body sherds - cooking ware + pitched vessel frags.

diag

1/2 double edged jar rim frag clw

7 clw base jar frags

2 handle frags clw

2 clw jar rim frags

2 echinus bowl rim frags

4 s/fine red glaze bowl rim frag

2 ad's amphora toe rim frags

1 s/fine red glaze body frag

1 bowl rim frag (outturned)

1 clw plate rim frag

2 clw bowl base frag

1 s/fine bowl frag

⇒ continued

T40

20/9/93

inspection of spoil from yesterday quickly established that the dig team had decided not to pick up any pottery towards the end of the day. Approx 5kg was recovered from the spoil in a matter of minutes including diagnostic pieces.

Today continuing with clearing of locus 2. (+ stern words)

- a couple of pieces of interesting looking pottery were recovered.

⇒ continued along locus (2) southward, a floor appears to be nearby (lots of pottery recovered).

- plaster block with line mould found 60cm down near south bank.

⇒ fluted stone piece (fairly eroded) was found 2m from east bank and 1m from south bank.

- a burnt piece of wood was found ~~near~~ near the plaster block, <sup>at</sup> ~~near~~ on floor level.

- a nail and flat piece of metal was uncovered at floor level near the stone fluting, as was a bronze blob.

⇒ a tumble of large dressed stone, sitting on soil, near S.W. corner was removed

- a couple of bronze blobs turned up at floor level

- team still seems incapable of finding sherds - many smaller fragments still being discarded. what is the point?

- Parthian green glazed pottery frag found on S bank approx 2m from W bank 70cm deep.

T40 20/9/93 locus 2 (bag 3)

large quant of c/w body sherds incl cooking + pitched ware

diag

- 3 c/w base frags Jar
- 2 c/w handle frags
- 2 c/w double edged Jar rim frag
- 1 amphora toe frag
- 1 grey ware echinus bowl rim frag
- 1 " " body frag
- 2 semi fine ware body frags
- 1 s/fine plate rim frag incised edge
- 1 c/w bowl rim frag

locus 2 20/9/93 bag 4

v large quant of c/w body sherds - incl cooking + pitched ware

diag

- 2 c/w Jar base frags
- 3 c/w double edge Jar rim frags
- 1 handle frag
- 1 fish plate base frag s/fine with rouletting
- 1 ~~s/fine ware plate base~~
- 4 ~~echinus~~ echinus bowl rim frags
- 2 plate rim frags
- 6 c/w bowl rim frags
- 7 s/fine redglaze body sherd
- 1 " redglaze " " with ridges
- 1 grey ware body sherd
- 1 fine ware redglaze bowl rim frag

T40 TUES 21/9/93

continued clearing of locus [2]. A couple of very large worked stones were uncovered but were too large to remove from the trench.

96x39 \* 58 cm

- a piece of bronze (brooch)? perhaps a piece to join pottery together
- a piece of glass
- a large amount of bone uncovered when the large rocks were moved, indicating this area is less disturbed (locus [3]).

the foundation of the N/S running wall is very clear, but no part of the wall which stood above ground appears to be left.

some of the rocks in the SW corner still have red and white plaster attached to them, with a lot ~~around~~ in the area around them.

or is this = 93.235 (Constantine) - a well preserved canal was found in the foundation grooves, 1m from south bank. (Roman) This may indicate very early robbing, explaining why no floor is apparent. (clay may have decayed with exposure)

a small bronze (hoop) found on locus [3] floor

locus [4]: the area east of NS wall and below the foundation wall top level.

the compacted floor of pottery 6cm thick (locus [3]) contained many c/w frags. incl. lamp frag.

T40 20/9/93 Lows 2 (cont'd) OPT

bag 5

large quant c/w body sherds - cooking + pitched

diagnostics

- 2 large c/w handle frags
- 2 adjoining bowl base frags
- 2 adj. bowl rim frags with vertical lines
- 1 c/w storage jar rim frag
- 2 double edged jar rim frags
- 2 base frag c/w
- 23 c/w rim frags bowl
- 1 echinus bowl rim frag
- 1 s/fine red glaze body frag
- 1 amphora toe frag
- 1 greyware small mouth frag (awc)

T40 21/9/93 Lows 2 (bag 1)

large quant c/w body sherds incl cooking + pitched

diagnostics

- 6 c/w double edged jar rim frags
- 2 handle frags
- 3 echinus bowl rim frags
- 3 c/w base frags
- 3 c/w plate rim frags
- 2 c/w bowl rim frags
- 1 s/fine ware red slip plate rim frag
- 1 " " bowl rim frag red + black glaze
- 2 " " greyware bowl rim frags

T40 21/9/93 (Pottery)

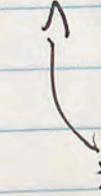
Lows 23 bag 1

large amount of c/w body sherds incl cooking + pitched were  
diagnostics

- 9 c/w double rim jar rim frags
- 1 body sherd with pie crust + palm leaf design c/w
- 86 c/w jar base frags
- 2 c/w handle frags
- 1 s/fine ware bowl rim frag red slip
- " " " " black glaze incised rim
- 1 c/w bowl rim frag
- 1 plate body frag black inner, red outer



Small Curviflora



T40 Lows 2 21/9/93

large quant of c/w body sherds incl cooking + pitched

diagnostics

- 68 c/w double edge jar rim frags
- 48 c/w handle frags (2 adjoining)
- 1 pythos handle + rim fragment c/w - possibly cookware
- 4 c/w jar/bowl base frags
- 1 c/w body sherd pie crust with palm leaf - attaches to sherd above
- 2 echinus bowl rim frags
- 1 c/w bowl rim frag
- 2 c/w jar rim frags
- 2 c/w bowl rim frags
- 1 s/fine ware red glaze body sherd
- 1 s/fine red slip bowl rim frag
- 1 s/fine black glaze body sherd
- 1 " red slip plate rim frag
- 1 s/fine bowl rim frag
- 374 rim frag (unknown source)



T40 21/9/93 locus 2 (bag 3)

large quant of c/w body sherds incl cooking + pitched.

diagnostics

- 2 table edged jar rim frags
- 3 c/w base frags
- 1 fish plate base s/fine + red glaze
- 4 eckinus bowl rim frags
- 1 s/fine red glaze body sherd
- 4 c/w bowl rim frags
- 3 plate rim frags
- 1 handle frag
- 1 greyware body sherd
- 1 badly decayed bowl rim frag.
- 1 handle frag (triple) - centre roped.
- 1 c/w sherd vertically incised
- 1 s/fine " " " red slip
- 1 greyware bowl rim frag
- 1 s/fine ware body frag
- 1 " " bowl rim frag.
- 1 c/w jar rim frag

T40 21/9/93 locus 4

small quant of c/w body sherds some pitched

diag

- 1 handle frag
- 2 eckinus bowl rim frags
- 1 s/fine black glaze body sherd
- 1 " red " " " "
- 1 greyware bowl rim frag

T40 wed 22/9/93

have reached a floor level - approx level with the unrobbed section of wall. The floor consists of a

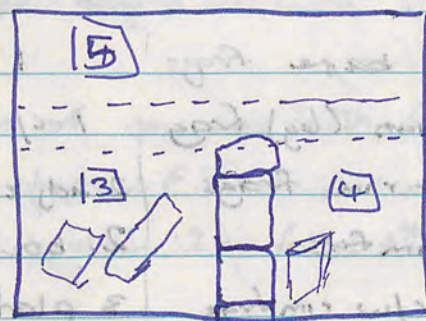
hard packed clay? - overlaying this along the SW is approx 5cm of hard pressed sherds and clay (locus 3)

Decided to clear to the hard floor layer, south to north, west of the wall.

- locus 3: - loam weight frag - small piece of glass? (black)
- nails - pounders - oodles of c/ware pottery
- lots of bone and a bit of charcoal

2 very large pieces of bone were removed from floor level, one of them approximately 30cm in length. Unfortunately it was very compacted and crumbled upon removal. Both appear to be leg bones from a fairly large vegetarian.

A wall is expected North of locus 3, hopefully external. Digging there (locus 5) and working south to intersect with locus 3 at a wall?



T40 22/9/93 locus 3 (bag 1)

large amounts of c/w body sherds incl pitched + cooking ware.

diagnostics

- |                                    |                                   |
|------------------------------------|-----------------------------------|
| 2 c/w handle frags                 | 1 c/w large echinus bowl rim frag |
| 1 double edged jar rim frag        | 3 adj. plate rim frags c/w *      |
| 6 c/w base frags                   | 1 plate rim frag c/w              |
| 1 unguitarian toe frag             | 1 s/fine red glaze body sherd     |
| 3 c/w bowl rim frag                | 1 " black slip plate rim frag     |
| 3 echinus bowl rim frags           |                                   |
| 1 cooking ware large bowl rim frag |                                   |
| 1 s/fine black slip bowl rim frag  |                                   |
| 1 fish plate base frag - (warped)  |                                   |
| 2 s/fine red glaze bowl rim frags  |                                   |

T40 21/9/93 locus 3 (bag 2)

large quant of c/w body sherds including cooking, pitched ware + some incised patterning.

diagnostics

- |                                |                                   |
|--------------------------------|-----------------------------------|
| 7 c/w large base frags         | 1 handle frag                     |
| 1 c/w unguitarian (leg) frag   | 1 c/w drip ware body sherd        |
| 5 double edged jar rim frags   | 2 adj cooking ware bowl rim frags |
| 3 echinus bowl rim frags       | 2 bowl rim frags                  |
| 3 adj large bowl c/w rim frags | 3 plate rim frags                 |
| 1 s/fine red glaze body frag   | 1 repair hole body sherd          |

22/9/93 T40 locus 3 (bag 2)

large quant of c/w body sherds incl cooking + pitched

- |                              |   |
|------------------------------|---|
| 6 double edged jar rim frags | 1 echinus rim frag grey ware                          |
| 3 handle frags               | 6 c/w bowl rim frags                                  |
| 1 double handle frags        | 2 s/fine red glaze plate rim frags                    |
| 5 base frags                 | 3 plate rim frags 2 adjoining *                       |
|                              | 1 amphora stand profile 1/2 diam 15 cm base 10 cm top |

less same plate

T40 23/9/93 Thurs

locus 3 placed into the time span

A large jaw fragment and other bones found in locus 3 area approx 1.5m from 5th, 1/2m from W. It is probably from a donkey and obviously large molar teeth.

A portion of leg bone is lying almost in contact with the dentiged jaw/skull frag. donkey jaw/skull frag and molar teeth " " "

T40 25/9/93 Sat.

- Continued clearing floor on locus 3 and recovering small finds, as well as making westward locus 3 time span.

- recovered a large stone with a hollowed out bowl shape in it. 2m from (east) 1.5m from North, maybe a post hole for ceiling.

- nail

locus 3 - small glass frag, odd shaped vessel, figurine frag, - odd shaped stone with hole side world side.

another section of jaw and teeth found in locus 3 - of similar size and type of first piece found 23/9/93. approx 20cm W. buried 2m from 5th

we appear to have cut through the floor level in locus 3 but it is unclear and very broken up. large pieces of worked stone embedded deep into the floor.

Lesim shugal shwey schwey, etak futim, shor elyom.

- part of the N/S wall (not opened was excavated locus 3). bearing only a little pottery, and mostly rubble.

P Pottery 23rd/9/93 See opposite 5/10/93

Pottery

T40 25/9/93 locus 5

large amt of c/w body sherds

Diagnostics

- 6 base frags
- 1 handle frag
- 2 double edge jar rim frag
- 2 c/w ribbed body sherds
- 1 mortarium rim frag
- 1 c/w body sherd drip ware
- 3 s/fine ware bowl rim frag
- 3 s/fine ware red glaze body sherds
- 2 " " plate rim frag
- 3 greyware body sherds
- 2 c/w rim frags.

25/9/93 locus 3 (bag 1)

large amt of c/w body sherds

Diagnostics

- 2 c/w base frags
- 2 c/w double edge rim frag (adjoining)
- 1 body sherd green enamel glaze
- 1 greenware rim frag
- 2 s/fine red glaze plate rim frag
- 1 s/fine black slip bowl rim frag
- 2 c/w bowl rim frag.

T40 25/9/93 locus 3 (bag 2)

med quant of c/w body sherds.

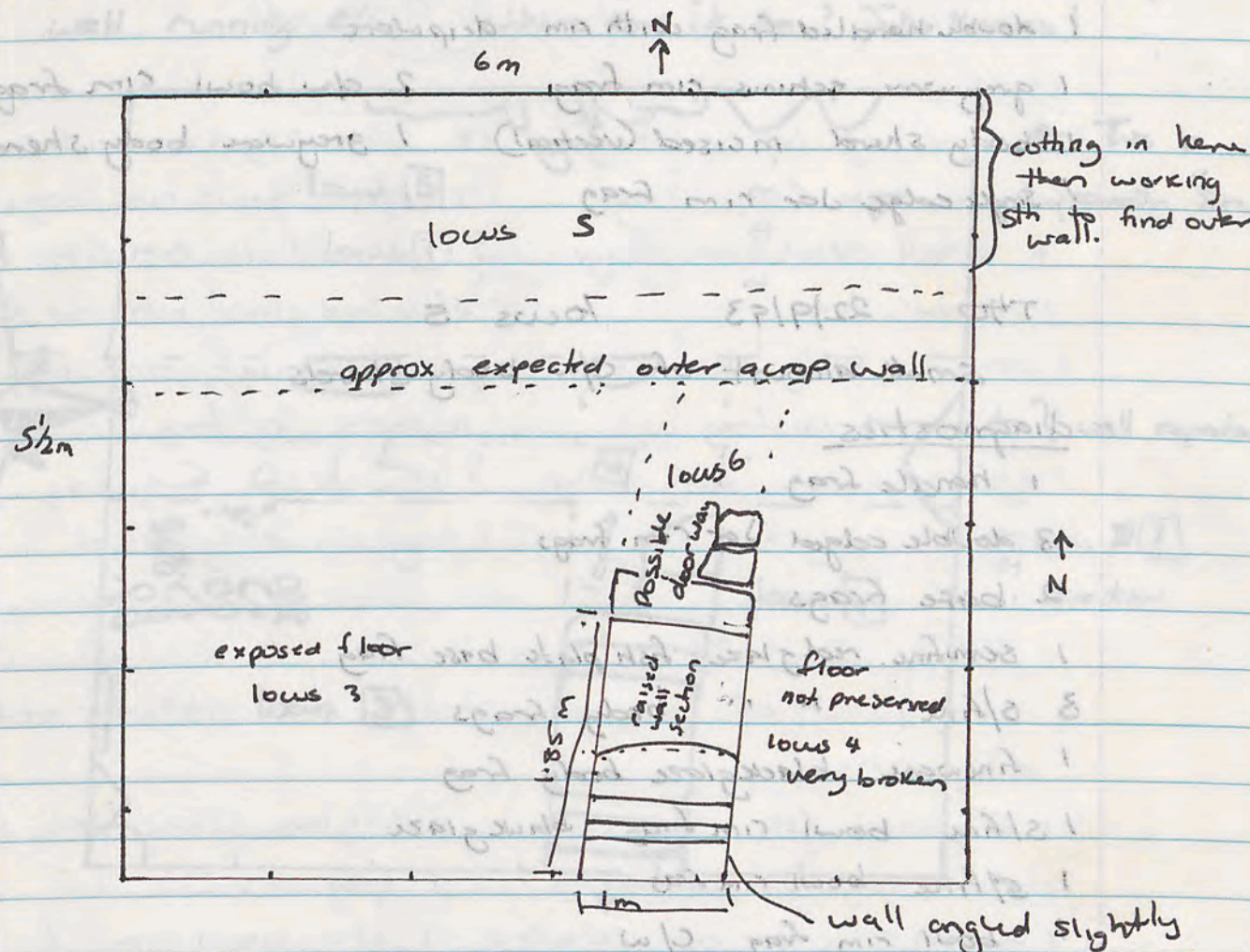
Diagnostics

- 1 amphora toe
- 1 fish plate base red glaze with stamp
- 2 red glaze s/fine body sherds
- 1 c/w double edge jar rim frag
- 2 c/w bowl rim frags
- 1 c/w base frag (badly eroded)
- 3 s/fine red glaze bowl rim frag
- 1 s/fine black glaze body sherd.

\* sediment from amphora toe tagged + put in lens box.

Sun 26 Sept

plan of action - digging down a little clear of where we would expect to hit the outside wall and later then slowly cutting back into towards the wall. Due to the robbing that has occurred we have not found any of the external wall at the internal floor level



1.05m down from S.E. cor. a floor level in locus 4 was uncovered. fairly clear clay level yielding pottery and a little glass.

T40 22/9/93 locus 3 (bag 3)

- 1 large quant of c/w body sherds (bloody huge)
- diagnostics
- 8 double edge c/w jar rim frags
  - 7 1/2 base frags
  - 1 amphora toe
  - 2 handle frags
  - 1 double handled frag with rim dripware
  - 1 greyware echinus rim frag
  - 1 body sherd incised (vertical)
  - 1 single edge jar rim frag
  - 4 1/2 s/fine red glaze body frags
  - 3 outturned jar rim frags
  - 2 echinus bowl rim frags
  - 2 c/w bowl rim frags
  - 1 greyware body sherd

T40 22/9/93 locus 5

Small amount of c/w body sherds

- diagnostics
- 1 handle frag
  - 3 double edged jar rim frags
  - 2 base frags
  - 1 semifine red glaze fish plate base frag
  - 3 s/fine " " body frags
  - 1 fineware black glaze body frag
  - 1 s/fine bowl rim frag black glaze
  - 1 s/fine bowl rim frag
  - 1 bowl rim frag c/w
  - 1 large vessel double edge jar rim frag - possible amphora stand

T40 25/9/93 locus 4

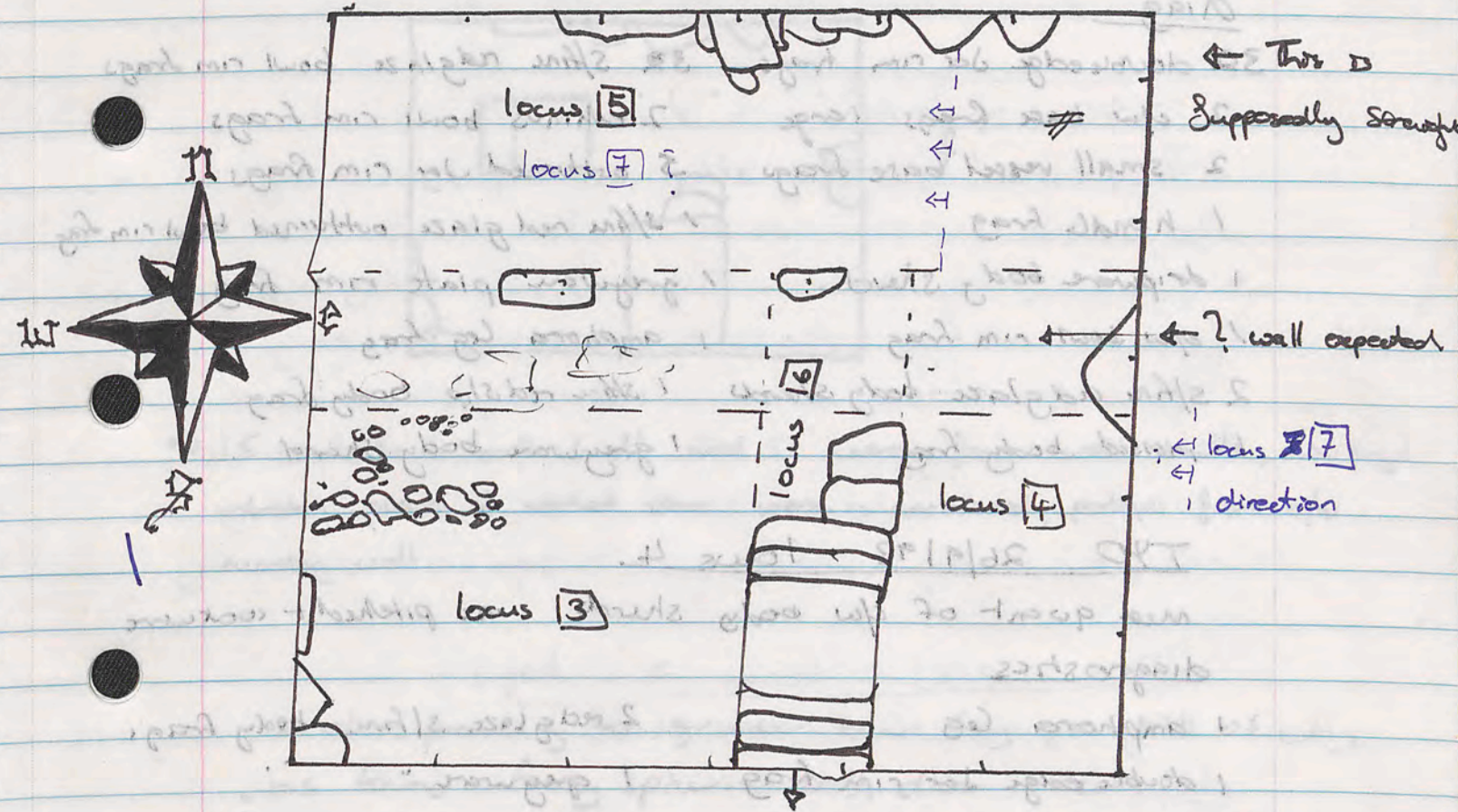
very small amount of c/w body sherds

- diagnostics
- 2 s/fine red glaze body frags
  - 1 s/fine red glaze plate rim with incised lines
  - 1 s/fine black slip bowl rim frag
  - 1 c/w sieve fragment (body sherd)

T40 27/9/93 Monday I think.

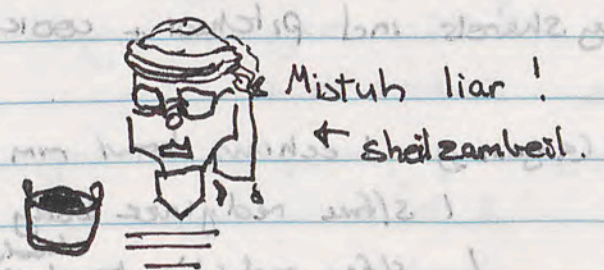
- Continued clearing floor levels in locus [4] (east), and locus [5] (northern external wall).
- Locus [5] was continued <sup>north</sup> along reddish wall area to where it meets locus [3] (intended intersection with east-west external wall).

locus 4 completely cleared to floor level with no sign of wall running E/W. where can it be? Julio knows!



The western portion of locus [5] floor was very broken and some of it was indistinguishable and destroyed.

Locus [7]: area below locus [5] floor level. East portion left as a section



# Pottery

T40

25/9/93 locus 6

Small quant of c/w body sherds

## diagnostics

- 1 double edged c/w jar rim frag
- 2 greyware body frags

T40 26/9/93 locus 5

Med quant of c/w body sherds

## diag

- |                                |  |
|--------------------------------|--|
| 3 double edge jar rim frags    | 3 s/fine red glaze bowl rim frags          |
| 2 c/w base frags large         | 2 echinus bowl rim frags                   |
| 2 small vessel base frags      | 5 outturned jar rim frags                  |
| 1 handle frag                  | 1 s/fine red glaze outturned bowl rim frag |
| 1 dripware body sherd          | 1 greyware plate rim frag                  |
| 1 c/w bowl rim frag            | 1 amphora leg frag                         |
| 2 s/fine red glaze body sherds | 1 s/fine red slip body frag                |
| 1 incised body frag            | 1 greyware body sherd                      |

T40 26/9/93 locus 4

Med quant of c/w body sherds incl pitched + cooking ware

## diagnostics

- |                                   |                               |
|-----------------------------------|-------------------------------|
| 1 amphora leg                     | 2 red glaze s/fine body frags |
| 1 double edge jar rim frag        | 1 greyware "                  |
| 1 double edge jar rim complete    | 1 c/w bowl rim frag           |
| 2 base frags c/w                  | 2 s/fine red slip body frag   |
| 4 s/fine red glaze bowl rim frags |                               |

T40 25/9/93 locus 3 (bag 3)

Med quant c/w body sherds incl pitched + cooking ware

## diagnostics

- |  |                              |
|--|------------------------------|
| 2 handle frags cooking ware (adjoining)      | 1 echinus bowl rim           |
| 1 cooking ware jar rim frag                  | 1 s/fine red glaze body frag |
| 1 c/w jar rim frag                           | 1 s/fine red slip body frag  |
| 1 s/fine black glaze outturned bowl rim frag | 1 amphora toe                |
|  | 1 red glaze stopper          |

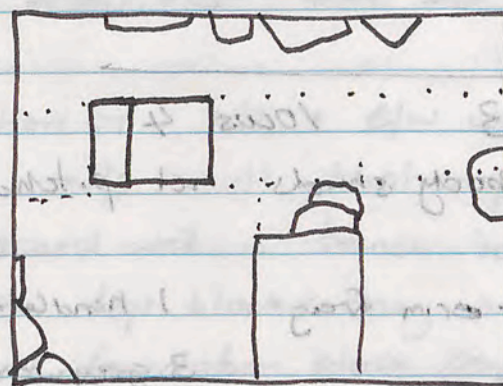
Sic93 - T40 28/9/93

Continued cleaning locus 5, and generally tidying up T40.

Lyle marceith clayom.

Still no sign of E-W wall, I think maybe it has done the belt.

- a stone grinder bowl fragment with a couple of pieces of basalt, in the north west portion of locus 5.



→ 1.5 south from north baule and 51 metre from west baule, two large unbroken pieces of worked stone were uncovered, perhaps from e/w running wall.

⇒

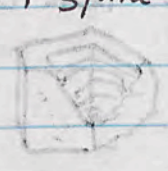
in close proximity to grinder bowl frag a ball of clay was found fairly spherical with diam 1.5cm.

T40 26/9/93 locus 6

med quant of c/w body sherds with pitched + cooking ware

diagnostics

- 8 double edge jar rim frags
- 1 echinus bowl rim frag
- 3 c/w handle frags
- 1 outturned jar rim frag
- 2 cooking ware handles (poss. same vessel)
- 1 base frag c/w
- 1 s/fine redglaze body frag.
- 1 s/fine plate rim frag
- 1 vase base frag
- 1 c/w jar rim frag



T40 27/9/93 locus 4

Med quant of c/w body sherds incl pitched + cooking ware

diagnostics

- 4 c/w double edge jar rim frag
- 1 handle frag
- 1 c/w jar rim frag
- 3 greyware body sherds
- 2 c/w base frag
- 1 c/w body sherd incised
- 2 c/w bowl rim frag
- 2 s/fine black paint bowl rim frag
- 1 c/w echinus bowl rim frag
- 2 s/fine redglaze body frags
- 1 c/w plate rim frag (2 incised frags)
- 1 greyware bowl rim frag.

T40 27/9/93 locus 5 bag 1

large quant of c/w body sherds incl pitched + cooking ware

diagnostics

- 5 double edge jar rim frags
- 4 c/w base frags
- 1 amphora toe frag
- 2 fish plate base frags red paint
- 1 jar rim frag with handle c/w
- 1 " " " frag red glaze
- 1 amphora leg - fine (2 adjoining pieces)
- 1 fish plate red glaze rim frag
- 1 c/w jar rim frag
- 5 plate rim frags
- 1 handle frag c/w
- 5 s/fine red glaze body sherds
- 4 s/fine red (black paint) body sherds
- 2 echinus bowl rim frags
- 1 double rim red paint bowl rim frag
- 1 greyware plate rim frag
- 2 greyware body sherds
- 2 bowl rim frags
- 2 plates

T40 Wed 29/9/93

part of E/W wall exposed only several blocks at floor level (outside) the rest appear to have been very extensively robbed.

vast amounts of mortar being found as fill in place of the robbed stone

figural frag clearly displaying a bare foot found in W bank in line with E/W wall, with something which may be a lamp frag. Area below floor level and excavation for wall = locus 7

intersection of N/S + E/W walls found. The top exposed layer of N/S wall that appeared to be off alignment with exposed wall in trench to Sth. It now looks as though the top blocks may have been shifted during robbing as foundation block (exposed) seems straight.

T40 27/9/93 locus 5 bag 2  
Med quant of c/w body sherds incl cooking ware

- diagnostics
- + large pythos body sherds.
  - 2 handle frags
  - 4 base frags
  - 2 black paint body frags
  - 2 c/w plate rim frags
  - 1 c/w red paint patterned body frag
  - 1 fine ware black glaze bowl rim frag
  - 2 s/fine adjoining shallow bowl rim frags red paint/incised lines.
  - 3 double edge jar rim frags
  - 3 red glaze body frags
  - 1 greyware body frag
  - 1 greyware plate rim frag - 2 incised lines
  - 1 c/w red paint body frag.
  - 5 bowl rim frags

T40 27/9/93 locus 6  
Small quant of c/w body sherds incl pitched + cooking ware

- diagnostics
- 3 double edge jar rim frags
  - 1 s/fine black paint outside/red inside body frag.

T40 28/9/93 locus 5 bag 1  
Large quant of c/w body sherds - pitched + cooking ware

- diagnostics
- 7 double edged jar rim frags
  - 1 standard amphora toe
  - 1 circumcised amphora toe
  - 2 fish plate base frags
  - 2 c/w base frags
  - 1 fish plate base frag red glaze
  - 1 burnt chano frag possibly rim.
  - 2 fish plate rim frag
  - 2 echinus bowl rim frag black paint
  - 1 s/fine black glaze body sherds
  - 2 s/fine red glaze " "
  - 2 shallow bowl rim frags c/w
  - 1 incurve rim bowl rim frag
  - 1 fish plate rim red paint

T40 30/9/93 T4URS

⇒ continuing locus 7 excavation. It is likely we will have to cut through the floor level in the Nth section of locus 4 to find the complete intersection of N/S + E/W walls.

⇒ Worked south from locus [7] to find internal intersection (western side) of N/S wall and E/W wall. Designated locus [8].

- a spindle wheel was recovered below floor level in Locus [8].

T40 28/9/93 locus 5 bag 2

Med quant of c/w body sherds incl. pitched  
diagnostics.

- 2 c/w single edge Jar rims
- 2 c/w double edge Jar rims
- 1 c/w handle frags
- 3 s/fine body frags red paint
- 1 s/fine red + black paint
- 1 s/fine red paint base frag?
- 1 s/fine (deep red) rim frag
- 1 c/w rim frag (bowl)

T40 29/9/93 locus 7

large amount of c/w body sherds - some pitched + cooking ware  
diagnostics

- 1 ungarterian rim frag
- 5 double edged Jar rim frag c/w
- 2 adjoining handle frag (green)
- 2 rim frags c/w (green)
- 1 swirly base frag (green)
- 3 single edge Jar rim frag, c/w
- 1 s/fine red glaze body frag - vertical lines
- 2 c/w outturned rim bowl frags.
- 2 c/w shallow bowl rim frags
- 2 plate rim frags single edge
- 3 plate body frag red glaze
- 2 plate rim frag red paint
- 2 bowl rim frag red paint
- 1 s/fine red glaze bowl rim frag
- 1 s/fine red glaze body frag

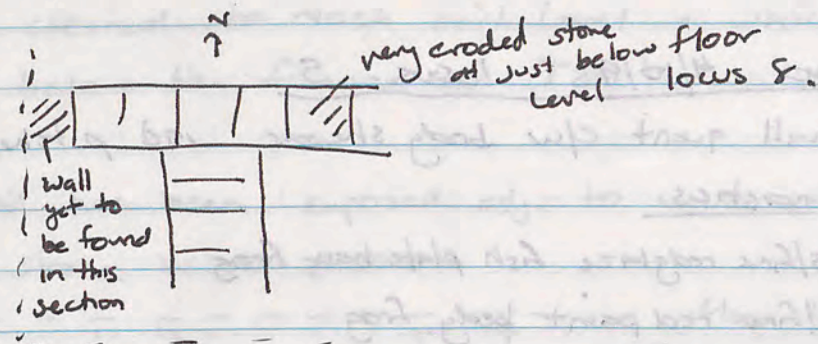
T40 30/9/93 locus 7

Med amount c/w body sherds incl pitched ware.  
diagnostics

- 2 adjoining c/w body sherds
- 1 c/w base frag
- 12 s/fine red paint body frags
- 1 echinus bowl rim frag black paint
- 1 bowl rim frag black paint
- 1 small bowl rim frag red paint
- 2 bowl rim frags.
- grogged ware weak black paint
- 1 s/fine black glaze body frag
- 1 small strap handle
- 1 c/w handle frag
- 2 c/w single edge Jar rim frag.
- 1 c/w Jar rim frag

T40 Mon 4/10/93

→ on continuation of excavation of locus 8, a very eroded piece of worked stone was uncovered. The stone is extremely crumbled + weathered - yet should have been under floor level indicating that it was perhaps exposed for some period of time.



⇒ another trench to be sited to the W of T40 has begun to be cleared of surface rocks - at this point the depth of rocks indicates that the wall has been robbed extensively as rubble is deeper than floor levels found in T40.

In the surface clearing of the trench, only diagnostic sherds have been kept as body sherds well out of context. Trench still to be numbered is either T42/T43? T44<sup>5</sup>



Pottery

T40 30/9/93 locus 8

Small quant c/w body sherds incl pitched were  
diagnostics

- 2 c/w red+black paint body frag
- 1 c/w red paint body frag
- 1 greenware c/w vertical lines
- 1 c/w small bowl rim frag in turned
- 1 greyware base frag
- 1 s/fine black glaze vertical + horizontal lines body shard

T40 4/10/93 locus 5

Small quant c/w body sherds incl pitched were  
diagnostics

- 1 s/fine red glaze fish plate base frag
- 1 s/fine red paint body frag

T40 4/10/93 locus 7

Small quant c/w body sherds incl pitched ware.  
diagnostics

- 1 c/w fish plate base frag
- 1 c/w amphora toe frag
- 3 s/fine red paint body frag
- 1 c/w shallow bowl rim frag black paint
- 1 c/w body frag black paint
- 1 s/fine red glaze body frag
- 1 s/fine red glaze echinus bowl rim frag
- 1 red paint plate rim frag
- 1 c/w large bowl rim frag
- 1 c/w echinus bowl rim frag
- 1 s/fine red paint echinus bowl rim frag
- 1 red paint bowl rim frag out turned.

23/9/93\*

T40 23/9/93 locus 5

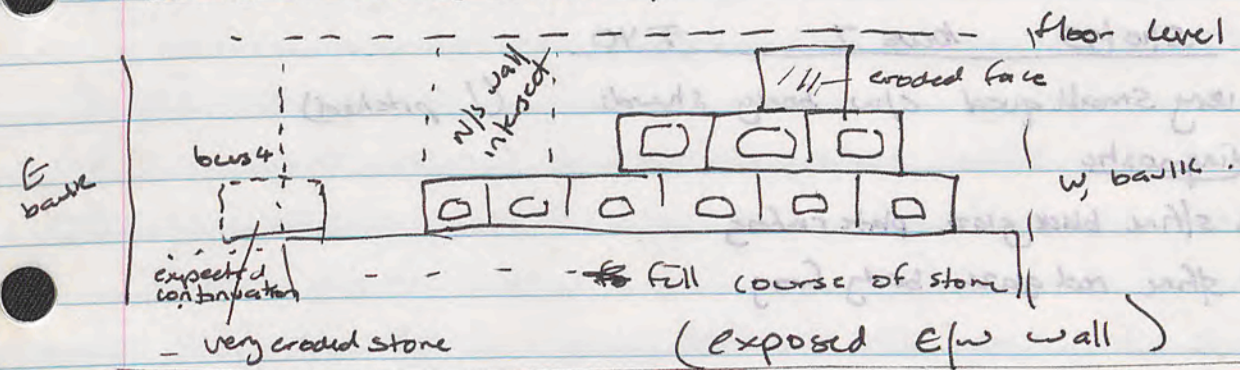
Small quant c/w body sherds incl pitched + cooking ware  
diagnostics

- 2 adjoining cookware frags - rim + shoulder of vessel
- 3 c/w base frags
- 1 c/w single edge jar rim frag
- 2 s/fine red paint plate rim frag (in used)
- 1 s/fine red glaze body frag
- 2 s/fine red+black paint body frags
- 1 echinus bowl rim frag
- 1 s/fine black glaze plate rim frag
- 1 s/fine brown paint body frag
- 1 small vessel handle frag
- 1 c/w rim frag (eroded)

T40 Tues 5/10/93

locus 7 still being excavated. section of wall adjoining w baulk still not uncovered. All of the E/W wall was robbed away to below the inside floor level and it appears that the robbing is more extensive to the W. In expected area of trench to W stone/rubble has been cleared to reach soil level - which has turned up far below the floors of T40!

E/W wall has been exposed adj. to w baulk, more course of stone below



below the floor level (locus 7) there was a thick deposit of chippings. below this level was obviously fill and included sherds (see pottery for 30/9, 4/10)

probably final clearing + levelling of trench floor in locus 7 today - unlikely to need to go to bedrock as purpose of trench was to find outside wall + intersection.

baulk on E side of locus 7 is probably the only one worth drawing - shows chipping fill etc along outside wall / trench.

Handwritten notes in Arabic script: 'لويس 7', 'الباulk', 'الترانچ'.

Handwritten notes in Arabic script: 'لويس 5', 'SAL E/M'.

\* 23/1/93

T 40 23/1/93 locus 3

med quant c/w body sherds incl. pitched & cooking ware.

diagnostics

- 4 offine red glaze body frags.
- 1 c/w echinus bowl rim frag
- 2 adjoining light green glaze body frags
- 2 s/fine black paint body frags
- 2 c/w double edge jar rim frags
- 1 s/fine black paint plate body frag
- 1 c/w large bowl rim frag
- 1 c/w plate rim frag
- 2 c/w bowl rim frag cooking ware
- 1 c/w base frag
- 2 c/w bowl rim frag
- 1 c/w body sherd incised vertical lines
- 1 s/fine red + black paint body frag.
- 1 mumkin echinus bowl rim frag

5/10/93 locus 7 T 40

very small quant c/w body sherds (1 pitched)

diagnostic

- 1 s/fine black glaze plate rim frag
- 1 s/fine red glaze body frag

~~5/10/93~~

6/10/93 locus 7 T 40

Small quant of c/w body sherds - 1 pitched  
no diagnostics.

JK93 T40 6 October 1993.

Brian got stung by an agrib, not bit.

→ Continued levelling out in locus 7 at the fourth course of rusticated external wall.

T45 Pottery

T45 Surface shards 5/10/93

small quant of c/w body shards incl 2 pitched.

diagnostics

- 1 fine ware red glaze rim frag
- 1 c/w shallow bowl rim frag
- 4 red paint body frags
- 1 s/fine red paint plate rim frag
- 1 c/w handle frag (stub)
- 1 c/w small bowl rim frag
- 1 c/w bowl base frag
- 2 greyware rim frags (bowls?)

T45 7/10/93 locus 1 bag 1 of 2

med quant of c/w body shards including pitched ware.

diagnostics

- 1 c/w rim frag pinch ware
- 1 c/w base frag (bowl)
- 1 c/w body sherd - possibly rounded/lid
- 1 echinus bowl rim frag
- 2 c/w handle stubs
- 3 c/w single edge Jar rim frag
- 1 small vessel rim frag
- 1 c/w rim frag (eroded)
- \* 1 rim frag + handle stub - parthian glaze.
- 1 s/fine body frag red glaze
- 1 outturned rim <sup>bowl</sup> rim frag c/w
- 1 s/fine body frag brown paint
- 1 body frag red paint c/w
- 1 c/w body frag - incised lines.

T45 7/10/93 locus 1 bag 2 of 2

large quant of c/w body shards incl pitched + cooking ware.

diagnostics

- 1 c/w amphora toe
- 1 echinus bowl rim greyware
- 1 c/w handle frag + rim
- 1 c/w Jar rim frag
- 1 c/w plate rim frag
- 2 rim frag eroded badly
- 2 c/w base frags
- 1 small vessel rim frag
- 1 s/fine outturned bowl rim frag red + brown paint
- 2 c/w outturned bowl rim frag
- 1 parthian green glaze body sherd
- 1 s/fine plate rim frag
- 1 c/w red paint bowl rim frag
- 1 body sherd - incised lines + palm design (mumuk Islamic)
- 1 c/w body sherd incised lines
- 1 c/w red + brown paint bowl rim frag.
- 1 s/fine body sherd black paint
- 1 s/fine body sherd red + brown paint

~~T45~~ T45

surface clearing of rocks in antic of new trench - i.e. 4+5/10 see notes in T40 on these dates. surface shards collected during the clearance of stone but it is out of context due to the robbing of stone.

T45 7/10/93

Cleared base rubble and broken/powdered stone (locus I). Few shards were uncovered and, although they were out of context and above soil level for accurate stratigraphic dating, were kept for diagnosis.

BRAHM Brahmin

T45 9/10/93 locus 2 (bag 2)

large quant of c/w body sherds incl cooking + pitched diagnostics

- 1 c/w body frag (very small vessel)
- 1 c/w amphora toe
- 2 c/w handle stubs
- 1 c/w handle frag
- 1 s/fine base frag
- 2 s/fine red paint bowl rim frags
- 1 c/w bowl rim frag
- 3 c/w Jar rim frags
- 1 s/fine red glaze body frag

T45 9/10/93 locus 2 (bag 1)

large quant of c/w body sherds incl pitched + cooking ware diagnostics

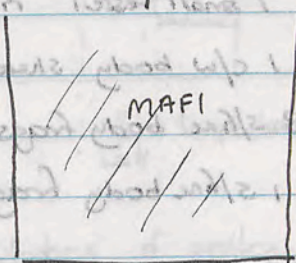
- 2 c/w adjoining storage vessel base frags (very large)
- 5 c/w base frags
- 2 c/w handle frags
- 2 echinus bowl rim frags
- 4 s/fine plate rim frags
- 1 s/fine black paint attuned bowl rim frag
- 2 c/w body sherds - incised lines
- 1 s/fine red + black paint bowl rim frag
- 2 adjoining c/w rim frags - small vessel
- 1 fish plate body frag red paint
- 2 s/fine body frags black paint
- 1 greyware body frag
- 5 double edged Jar rim frags
- 3 c/w plate rim frags
- 3 Jar rim frags c/w
- 2 c/w rim frag - not enough to tell
- 1 c/w attuned bowl rim frag
- 7 s/fine bowl rim frags
- 1 c/w intuned bowl rim frag
- 1 greyware rim frag
- 4 s/fine body sherds red glaze
- 2 s/fine body sherds red paint
- 1 s/fine body sherd black glaze

SLE SALEM

9/10/93

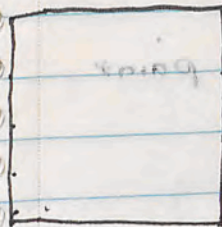
Have reached a soil level approx 1 m down + still containing broken stone / rubble. The soil to the W of expected N/S wall is extremely loosely packed. still no sign of any of the walls. loose floor / darker soil is locus [2].

Small piece of folded bronze found approx 1 1/2 m from Sth end 1/2 m from W bank.



black layer of soil appearing on W side of trench only extending a little beyond the bank - indicating perhaps that a trench has been dug to rob away the stone.

still no sign of walls - some undisturbed soil appearing along W bank containing many sherds / very dark soil. Trench now over a metre deep from at expected intersection point N/S + E/W wall + 1 1/2 m deep at Sth end of trench.



9/10/93

large quant of c/w body sherds incl pitched + cooking ware diagnostics

T45 10/10/93 locus 2 bag 1 of 2

large quant of c/w body sherds incl. pitched + cooking ware.

diagnostics

- 6 footed ring bases c/w
- 2 c/w handle stubs
- 1 c/w handle stub - roped
- 1 c/w handle stub + rim frag
- 1 single edge jar rim frag
- 1 bowl base frag unfooted c/w
- 2 c/w bowl rim frags
- 1 fish plate body frag brown paint
- 2 s/fine fish plate bases - 1 stamped
- 2 c/w double edged jar rim frags
- 1 black paint plate rim frag
- 4 echinus bowl rim frags - 2 adjoining
- 1 small vessel rim frag (triple edge)
- 1 c/w body sherd 2 sets of parallel lines incised
- 3 s/fine body frags brown paint
- 1 s/fine body frag red paint

T45 10/10/93 locus 2 bag 2 of 2

large quant of c/w body sherds incl pitched + cooking ware

diagnostics

- 3 fish plate base frags
- 5 c/w ring base frags
- 1 stamped red paint body frag => removed to inventory items.
- 2 amphora toes
- 2 c/w plate rim frags
- 1 echinus bowl rim frag s/fine brown paint inner.
- 1 c/w rim - possibly spout?
- 1 s/fine body frag red paint outer
- 1 greyware body sherd
- 1 c/w handle frag
- 3 c/w jar rim frags (- 1 cooking ware)
- 1 c/w echinus bowl rim frag
- 2 s/fine body sherds brown paint

T45 11/10/93 locus 2 bag 1 of 2

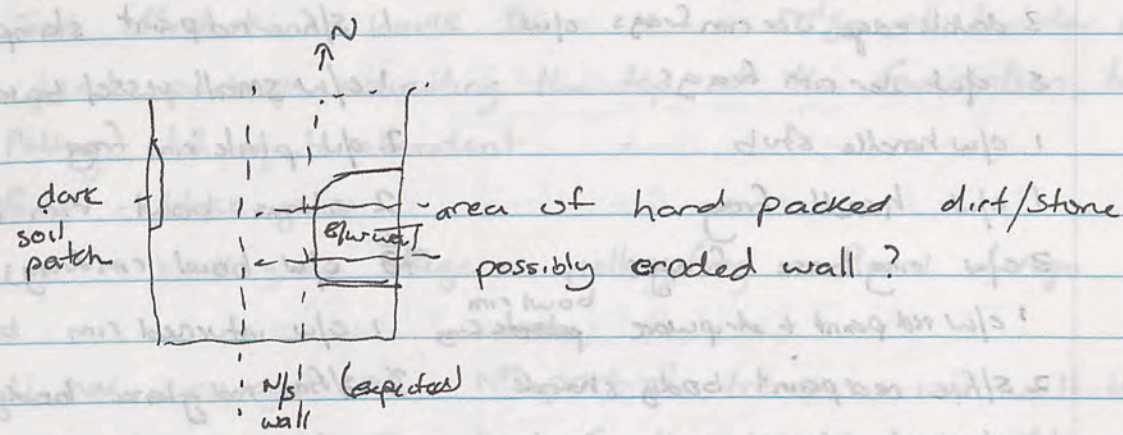
large quant c/w body sherds incl pitched + cooking ware.

diagnostics

- 1 figurine base => special objects.
- 2 c/w handle frags (1 strap)
- 1 body sherd - pie crust
- 3 c/w ring base frags
- 4 double edge jar rim frags
- 1 triple edge " " "
- 1 amphora leg
- 3 s/fine body sherds red paint
- 1 greyware body frag
- 1 c/w plate rim frag
- 1 c/w bowl rim (munkin echinus)
- 1 s/fine red paint plate rim frag

T45 10/10/93

still searching for any sign of walls. small chippings being found in SW corner of bank - either trench fill below (floor level) or extremely eroded stone.



large quantities of pottery being found again today. dark soil area does not appear extensive. - possibly a dump of some kind - many sherds/bones almost no charcoal.

hardpacked soil seems of no consequence - dirt underneath - lamp frag + glass frag found

due to a fire made upwind earlier today, charcoal was discarded.

T45 11/10/93 locus 2 bag 2 of 2

large quant c/w body sherds incl. pitched + cooking ware, diagnostics

- 1 piece black glass removed to special objects.
- 3 double edge jar rim frags c/w
- 5 c/w jar rim frags
- 1 c/w handle stub
- 1 c/w handle frag
- 3 c/w ring base frags
- 1 c/w red paint + dripware <sup>bowl rim</sup> frag
- 2 s/fine red paint body sherds
- 1 c/w body sherd - incised lines
- 1 s/fine red paint stamped fish plate <sup>frag</sup> base
- 1 c/w small vessel base frag
- 2 c/w plate rim frag
- 2 echinus bowl rim frags
- 5 c/w bowl rim frags
- 1 c/w inturred rim bowl rim frag
- 2 s/fine red glaze body sherds

T45 12/10/93 locus 2

med quant of c/w body sherds incl pitched ware.

diagnostics

- 9 ring base frags c/w
- 3 c/w handle stubs
- 5 c/w handle frags
- 1 amphora toe
- 1 s/fine body sherd red + black paint
- 1 s/fine body sherd red <sup>glaze</sup> interior
- 3 echinus bowl rim frags (one with clay fault)
- 5 c/w jar rim frags
- 4 c/w bowl rim frags
- 1 c/w bowl rim frag brown paint
- 1 c/w ring base nipple underneath

12/10/93 T45 locus 3

small quant of c/w body sherds incl pitched + cooking.

diagnostics

- 2 ring base frags c/w
- 1 cooking ware jar rim frag
- 1 double rim jar rim frag
- 1 red paint + bowl rim frag
- 1 small vessel rim frag c/w
- 1 echinus bowl rim frag
- 1 red glaze semi-fine ware body frag
- 1 semi-fine body sherd black paint

T45 - The main trench 11/10/93.

Nth boundary of trench to be extended, if time permits to see if there is an indication of the intersection with the outside wall.

Just off of the W bank there is a ridge of harder decayed stone/soil perhaps indicating the top of the foundation trench.

Pottery still quite abundant

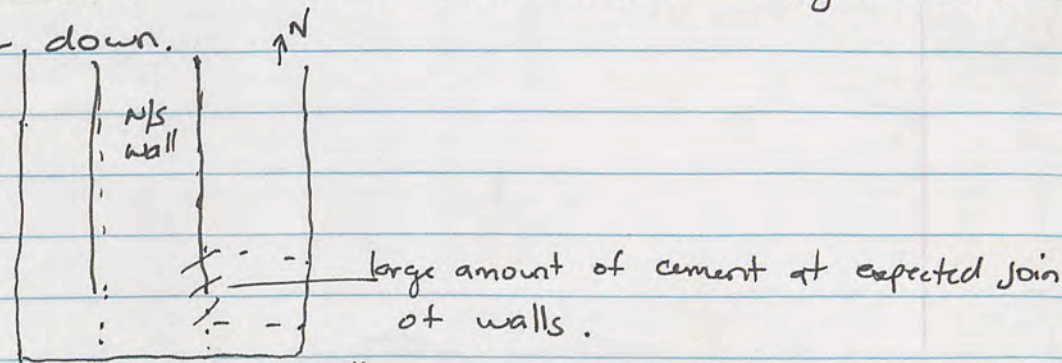
- found - black glass

- black glaze megarion pottery frag - floral design.

Wall has emerged at Nth part of trench. we will level off the trench at the top of the blocks - ~~at this digging down probably tomorrow~~

T45 12/10/93

N/S wall appears at this stage to be all at the same level along the excavated section of trench - area that has only been cleared of rocks (not excavated may be robbed still further down).



once trench cleared to <sup>floor</sup> level - the trench will be extended to the Nth to find the next wall intersection.

stone missing from wall level at 5th part of N/S wall - but wall is obviously in align. with W wall exposed in trench 2m to the south.

locus 3 = bank clearance to the Nth along entire width of trench to expose top of remaining wall.

JK 93 T. 45 14.10.93 locus 3

medium bag body sherds

1 amphora toe 1 complete handle c-w 1 v. large double handle

2 ring base frags 6 rim frags

JK 93 T. 45 13.10.93 locus 3 Bag ref. 2.

medium bag body sherds.

2 ring base frags 2 c-w rims etc.

J.K 93 T. 45 13.10.93 locus 3 pag 1 of 2

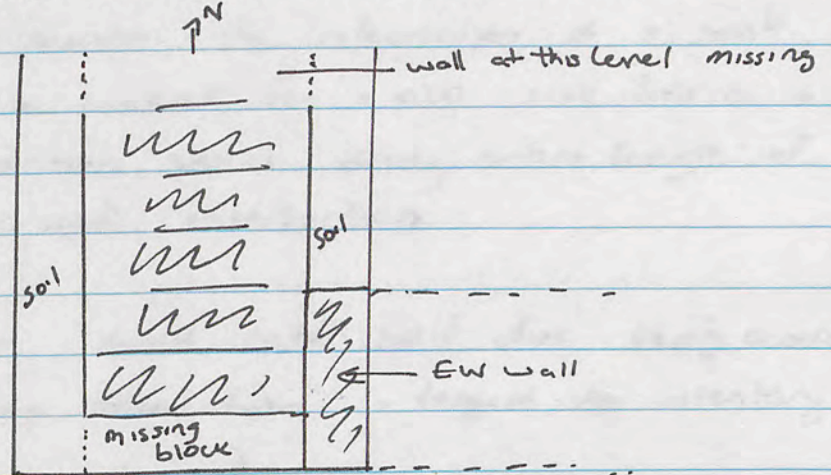
medium bag c-w body sherds

1 ring base frag. brown plate grooved interior

1 brick red fabric handle frag.

T45 13/10/93.

Extending the trench further to the North. Wall level drops off after 6 stones. At this point the trench is being levelled at the top of exposed wall. - Baden munition sink trench to find the next course of wall.



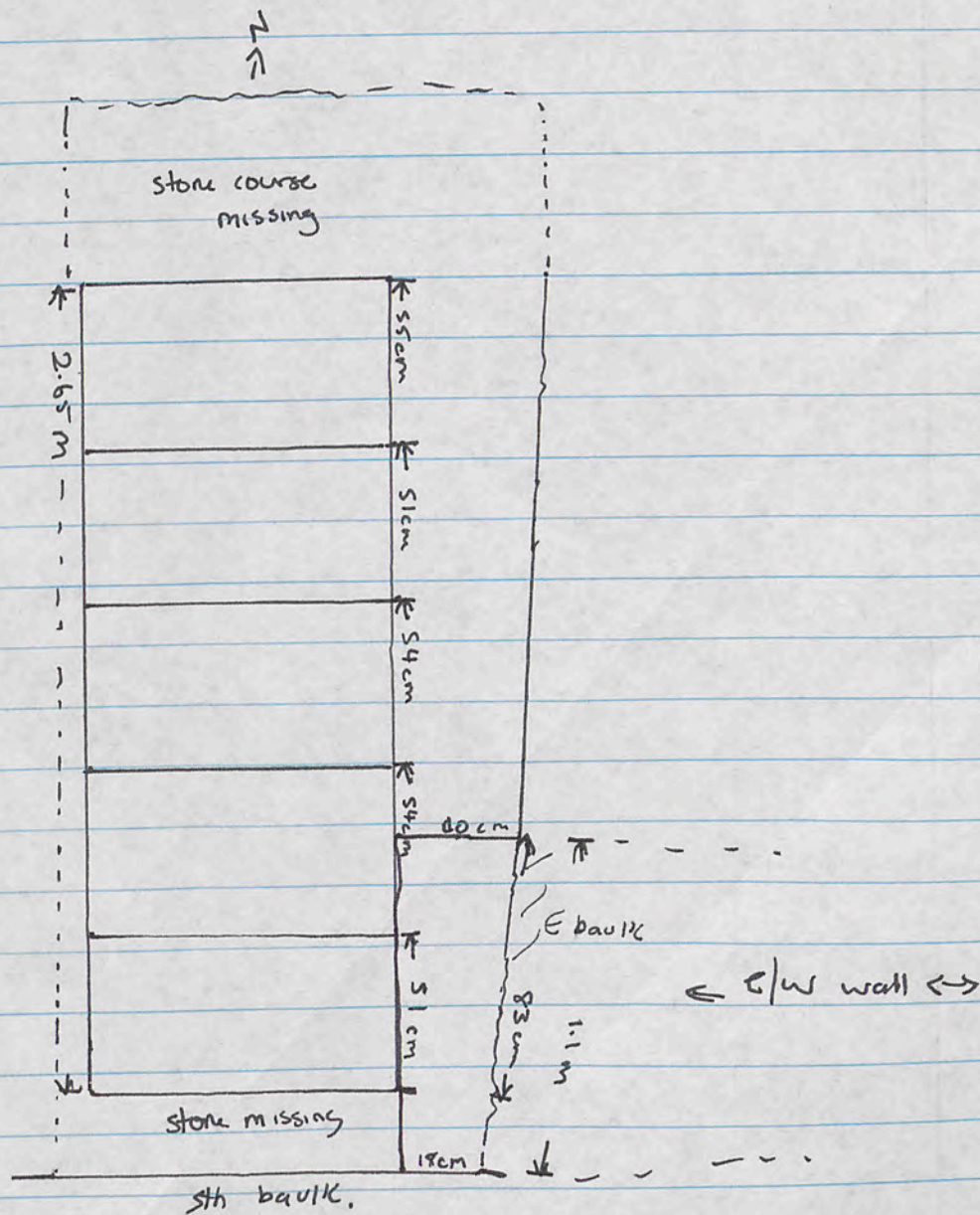
T45 14/10/93

Final day of digging.

Trench still being cleared to the North (~ low 3) without sinking level any further - staying at approx exposed wall level.

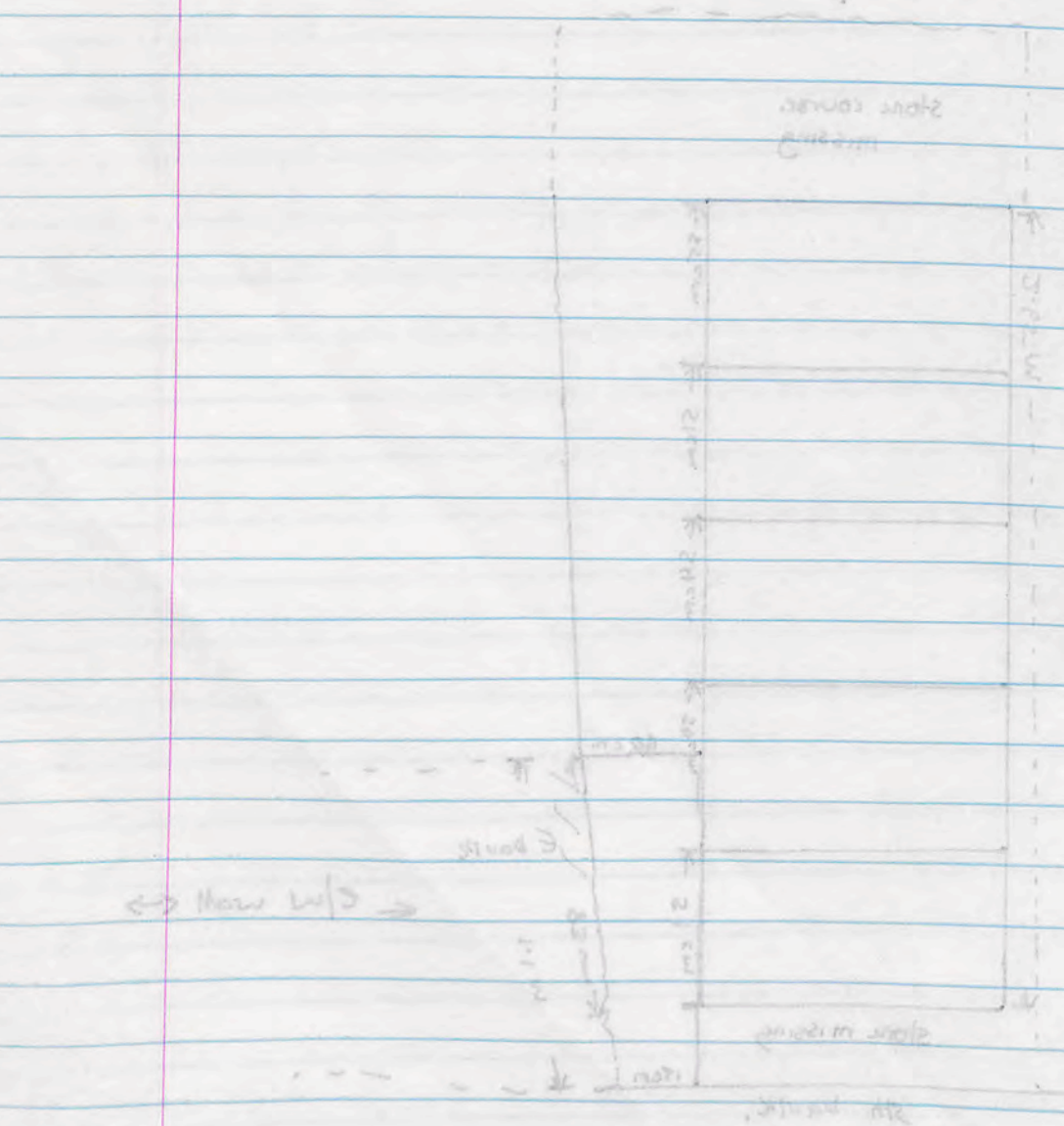
For next season - the intersection of a wall from the west should be looked for - also sink trench + extend to find foundation stones along entire length of trench + find outside wall intersection.

low 3 - small metal half disc badly eroded and broken during excavation - tagged for inventory.



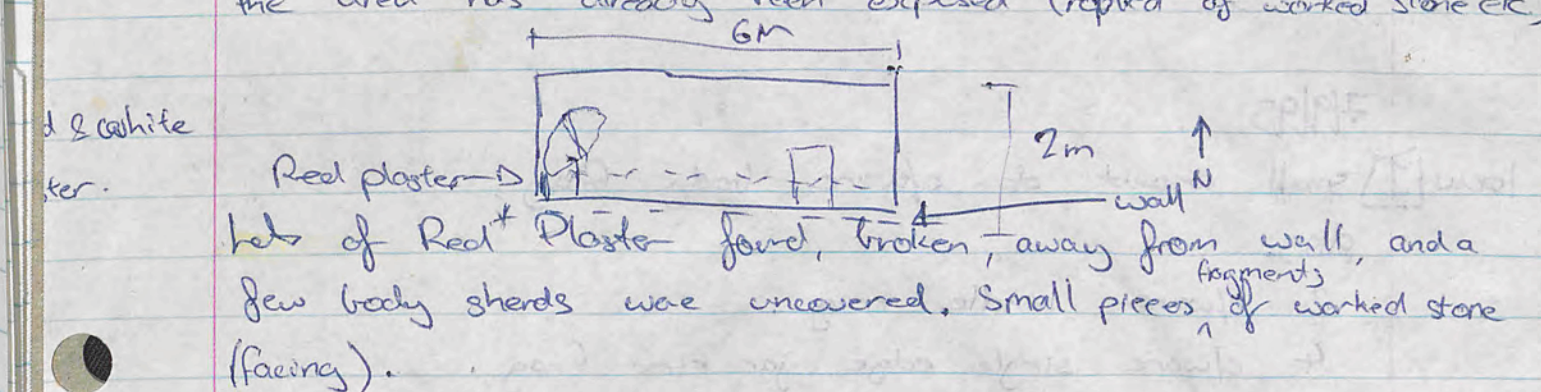


2PT  
 2PT  
 (L oval -) distal end of hand found like about  
 low because except to projects - within low level ground  
 all most flow is in water. all: near base of  
 at base of hand the oval - not broken at these two  
 + distal to distal side oval - not broken at these two  
 (facing)

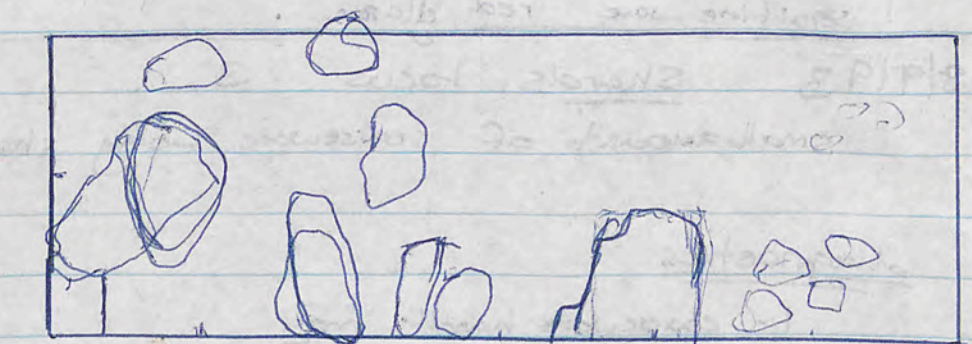


7/9  
 JEBEL KHALID 1993  
 ACROPOLIS T 36 L. Smit / E. Clarke  
 T36 End of Akropolis

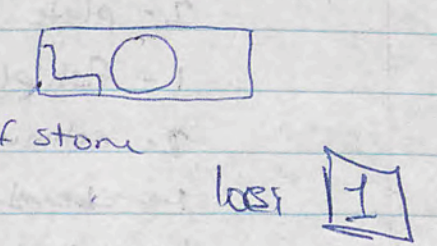
Cleared rocks from top, ~~for~~ all broken, discarded from other  
 trenches, a piece of wire was embedded in west end of trench indicating  
 the area has already been exposed (repld of worked stone etc.)



Two metres from east bank, a large piece of worked stone, possibly  
 fallen from the wall.



roof piece / stone 85cm x 35  
 appears to have a socket  
 possible circular hollow in centre of stone  
 too damaged - so removed.



3/9/93 shards locus 5

6 c/ware body shards

diagnostics

1 c/ware handle frag.

7/9/93

locus 1 small amount of c/ware body frag.

diag.

3 c/ware handle frag.

4 c/ware single edge jar rim frag.

1 c/ware double edge jar rim frag.

1 c/ware bowl rim frag.

1 echinus bowl rim frag.

1 semi-fine ware red glaze.

8/9/93 shards locus 3

small amount of coarseware body shards

diagnostics

1. coarseware handle frag

2. bowl rim frag

2. double edged jar rim frag

2. plate rim frag

1. fish plate base frag

2. echinus bowl rim frag

~~1. bowl rim frag~~

1. shallow bowl rim frag

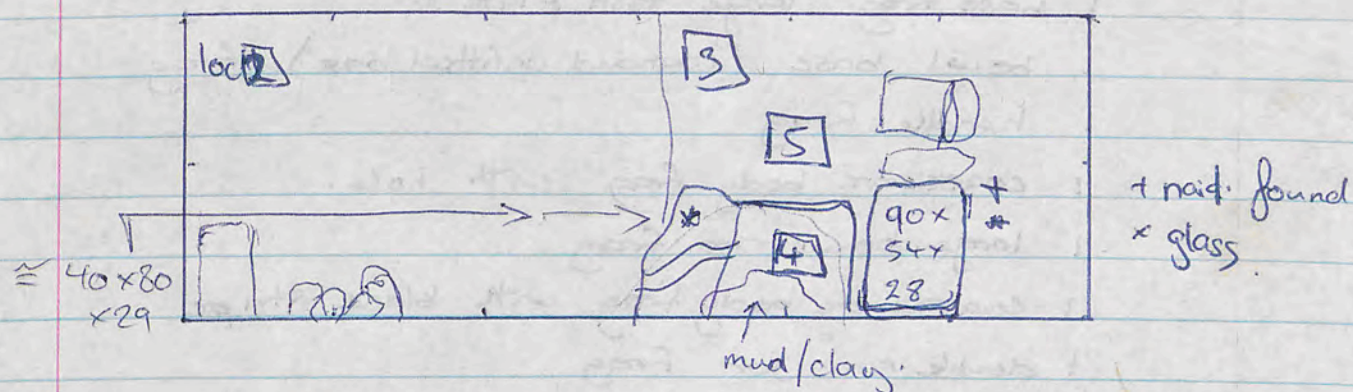
1. greyware shallow bowl rim frag

2. <sup>semi</sup> fine ware body fragments.

T36 Akropolis 2/9.

→ Continued to clear dirt & broken\* rocks from trench. signs of very eroded wall (south end) coming through.

\* many of the rocks having a single worked face.



Underneath about 30 cm of broken rock, the soil seems to change colour maybe indicating undisturbed ground, {called loci 2} also containing small bits of bone.

→ a small nail was uncovered in the eastern edge of loci 5. approx 45 cm ↓ from SE corner.

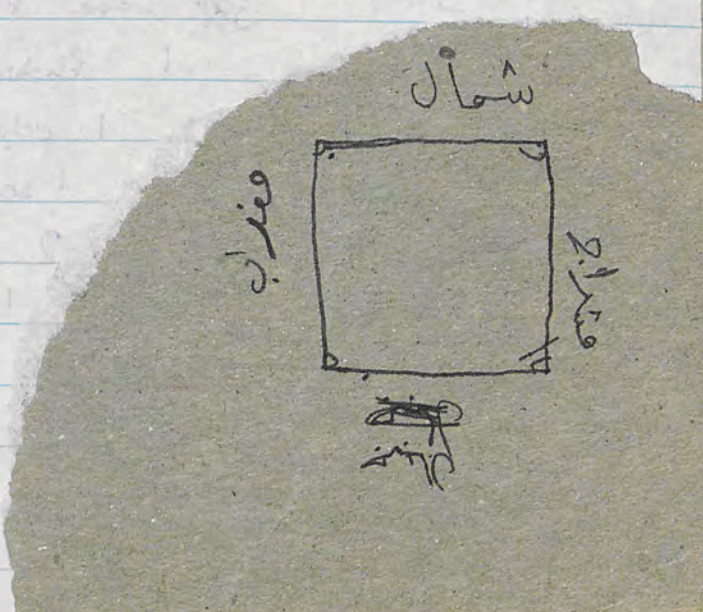
→ a piece of glass found 10 cm S of where the nail was.

a large intact piece of 'wall' near east end of south wall.

→ clay found loci 4 is maybe floor but very broken.

80 cm down from S. level

and another 12 cm further down 5



9/9/93 - Shards locus 2

medium quant of coarseware body shards

diag.

- 1 base frag large fish plate.
- 1 bowl base (rounded unfitted base) frag
- 1 handle frag
- 1 coarseware body frag with hole.
- 1 large bowl rim frag
- 1 coarseware body frag with black stripe
- 1 double rim jar frag
- 1 bowl rim frag
- 1 extra frag semi fine ware red

\* 2 large fragments put in diagnostic count for 12/9/93 loc 5 - adjoining pieces to ~~store~~ coarseware

locus 5

a medium amount of coarse body sherds.

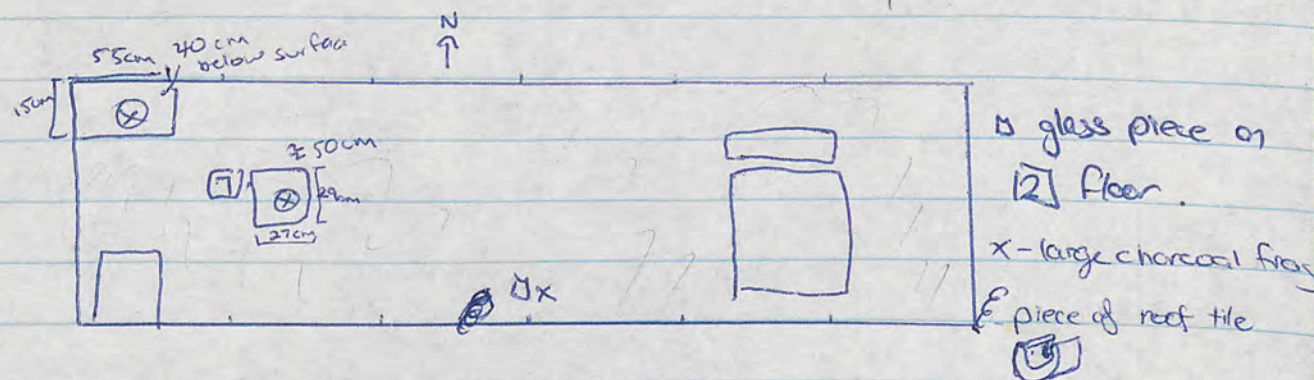
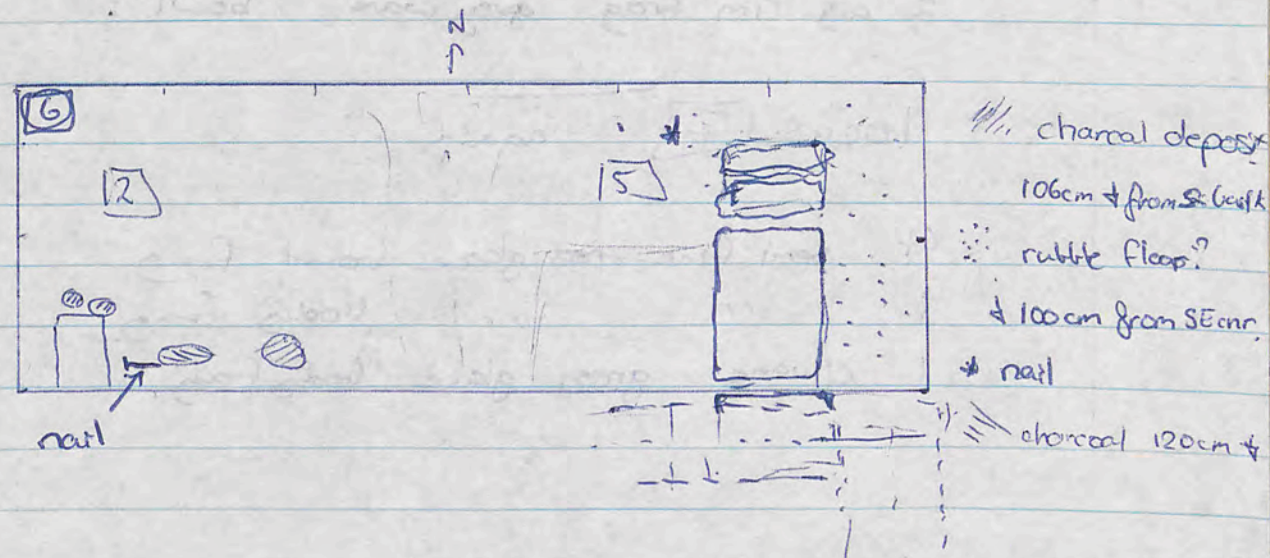
diagnostics

- 2 coarse handle frags.
- 1 " fish plate base frag.
- 3 " jar base frags.
- 1 fucking huge rim frag.
- 1 echinus bowl rim frag.
- 1 - shallow 1 semi fine ware red glaze body frag.
- 1 - greyware sh 2 bowl rim frag, red & black glaze
- 2 - dump <sup>semi</sup> fine 1 jar rim frag, coarse
- 2 plate rim frag

T36 Akropolis 9/9/93

→ Removed large broken worked stone from central area of the trench, rubble and dirt was underneath.

- a small amount of charcoal (fire on a floor?) 106 cm ↓ from S. wall.
- a nail was uncovered on floor level locus 15
- @ very small quantity of charcoal in SW corner (- 3 small particles)
- bone fragments NW corner - within root level of soil - loc 6



② more worked stone appearing though not clear if associated with any structure still.

⑦ charcoal fragment.

→ moved earth and rocks out, level with floor, base of loc 12 & 15 & 16.

JK 11/9/93 sat locus 7  
 medium amount of coarseware body sherds.

diagnostics -

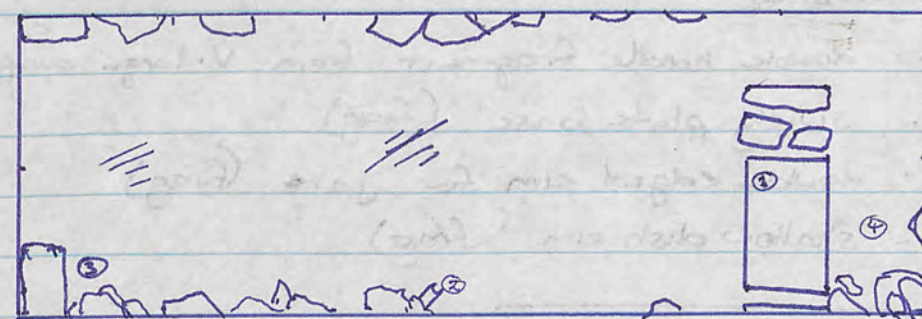
- 1 rim fragment bowl greyware - possible ~~piece~~ piece of bowl in diagnostics of locus 9 date 14/9/93
- 1 fish plate base frag
- 1 amphora toe frag
- 1 bowl rim frag coarseware.
- 2 ad rim frag greyware bowl?

locus [7] again.

- 4 semi fine red glaze bowl frag
- 1 " " body frag.
- 1 clear green glaze body frag.

S < E, S > S  
 ↑ N  
 ↑ S  
 ↑ S

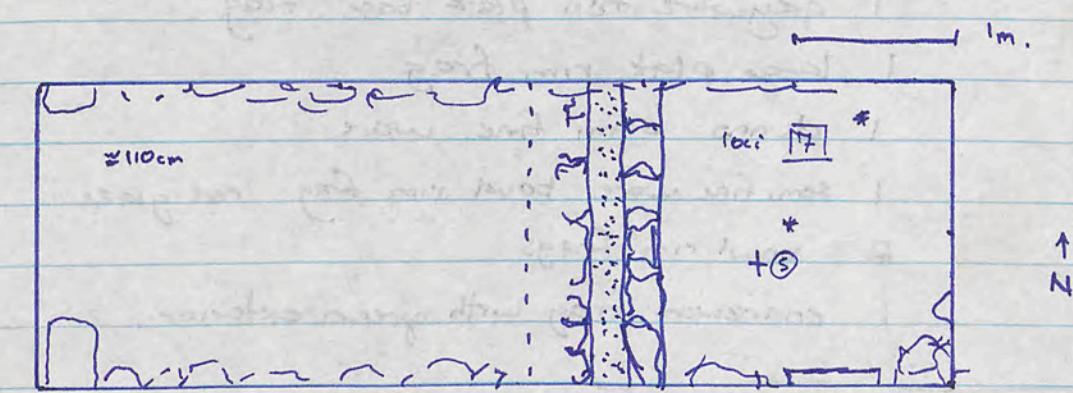
T36 Akropolis 11/9  
 Cleaned floor level: measured from S.E. bank 120 cm &  
 fairly broken hard clay.



1m

- /// clean clay floors
- ① full worked stone 53x90x28
- ② tile, fluted.
- ③ pottery left in situ on floor.
- ④ area of floor very broken with rubble.

→ 2.7m from EAST BANK (wall); The trench was divided ~~E/W~~ E/W with the west to be left, and the east to be excavated. loc [7]  
 Approximately floor level running N/S 2 metres from east wall appears to be a wall (line of fairly uniform rocks semi-dressed). Double wall.  
 ⇒ there appears to be rocks underneath, maybe indicating a drain.



- ⋯ rubble/rock bottom/drain.
- ⊕ piece of iron 130 cm ↓
- ⋯ sector division, \* section
- \* piece of wood found underneath large stone block. ≈ 1m ↓ from SE cor.
- + large piece of nail found 120 cm ↓ from S.E. cor.

Sun 12/9 - sherds. locus 7

very small quant. coarseware body sherds

diagnostics

- 1- double handle fragment from v. large amphora
- 1- swirly plate base (frag)
- 1- double edged rim for jar (frag)
- 1- shallow dish rim (frag)

4

Sherds bag locus 5

4 pieces coarseware body sherds 2 large.

sherds also locus 5

m. medium quant of coarseware body sherds.

diagnostics

3 ady. pieces of stone were - 2 from 9/8/93 loc 2 approx 56cm diam. - huge storage vessel frags.

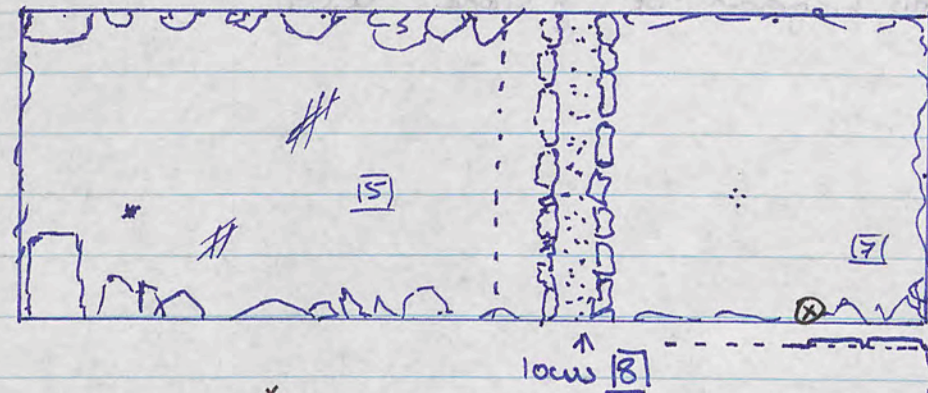
- 2 jar rim frag
- 1 bowl rim frag
- 1 greyware fish plate base frag
- 1 large plate rim frag
- 1 dunno semi fine ware
- 1 semi fine ware bowl rim frag red glaze
- 2 bowl rim frags
- 1 coarseware frag with green exterior.

12/9 cont'd locus 5

(diagnost) 1 small amphora toe in frags (5) Several small frags lost during washing process

T36 Akropolis 12/9

- Removed > 2 litres of soil from the 'drain' for Julia's Elevation.
- Continued removal of soil/rubble from eastern side of the drain, very few/no sherds are being uncovered seeming to indicate we are well below any previous floor level.
- The floor section of locus 5 was again swept with 'in-situ' sherds removed. An amount of charcoal was also removed, near a coin.
- locus 7: a bone and a small amount of charcoal removed at 150 cm from S.E. cor.

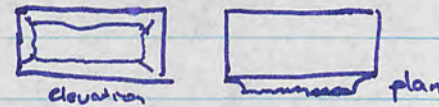


\* coin at floor level. ∴ bone & charcoal 1.5m deep.

locus 5, tile fragments removed at floor level,

⊗ - nail in wall locus 7

The stone wall to the south was uncovered in locus 7 about 1.6m and about 10cm south of the vault (undercut), foundation facing.



\* = 93.059 disintegrated!

13/9/93

locus [5]

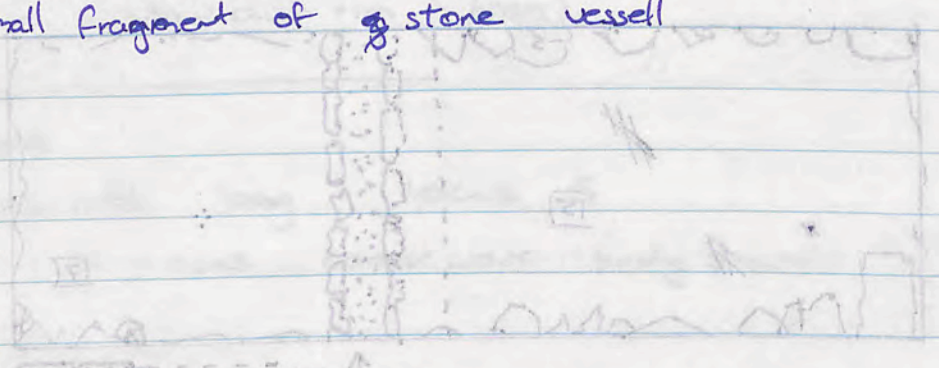
small amount of coarseware body sherds

locus [7]

small amount of coarseware body frags.

diagnostic

small fragment of stone vessel



14/9/93

small quantity of coarseware body sherds

8 diagnostics -

1 rim frag - plate

1 rim frag - Jar

3 ady fragm. grey coarseware rim frag bowl

1 rim frag - bowl

1 rim frag ~~thick~~ bowl

1 rim frag very large bowl

1 roof tile - 6 adjoining fragments.

locus 9

locus 5

5 coarse body sherds

1 bowl rim frag

locus [5]

T36

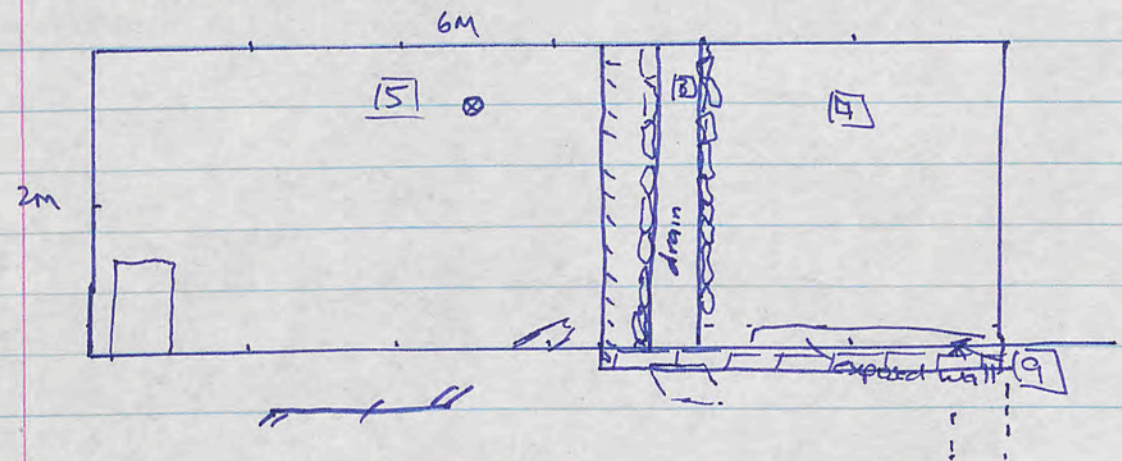
13/9/93

Akropolis

→ continued excavating locus [7] down toward Sebel Khalid bedrock. again/still it appears to basically rubble against the rusticated foundation southern (T36) wall.

→ decided to extend locus [8] into the bank as well, to establish the integrity of the drain. Hoping to be indicated by a hole in the wall or a direction change. - had trouble locating wall - found a sloped worked stone dropping towards drain. stopped on this section to work from exposed wall across to drain.

⊗ glass fragment found on floor level 2m from w, 1m from S bank.



T36 Akropolis

14/9/93

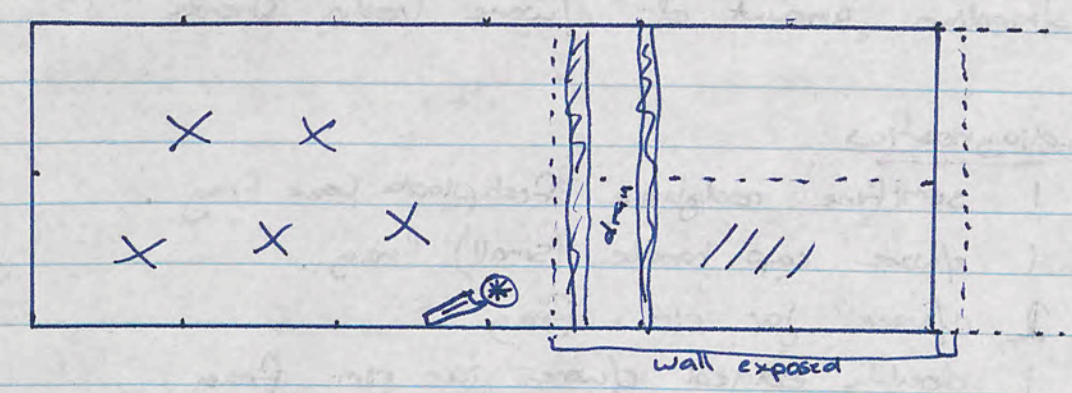
→ locus [7]. Builders rubble continued down to 2.45m from S.E. cor.

- clay floor level, no rubble protruding through; was cleaned of rubble to that level.

→ The undercut southern bank was removed (locus [9]), ~~with~~ exposing wall to the top, with pottery, bone and charcoal, from above floor level, being removed. - previously exposed stone is fairly weathered and crumbly.

PTB

T36 14/9 cont'd.



The trench was extended to the E to find the corner  
 nothing has been found on 2nd exposed floor level approx 2.5m  
 (2.45m) from S bank level.

- /// - continued excavation to find foundation/Jebel
- X - area left at first floor level
- \* - guttering piece removed

T36

wed (1 day to Aleppo)

15/9/93

Still continuing digging to foundation. a clay level was reached which was only a few inches thick but contained no shards, bone or charcoal. It was decided to continue cutting through this floor? level in search of the elusive foundation. due to shape + depth of pit the bank in NE corner is badly eroding through the process of soil removal from trench.

Somebody in the village is mort today - yahyeh is away to organise funeral and we will lose most of our workers at mangaria for funeral attendance.

1 day was not consistent and was only in certain areas.

T36 { 919193 } ?  
(locus 15)

1 medium amount of c/ware body sherds

diagnostics

- 1 semi-fine redglaze fishplate base frag.
- 1 c/ware cup handle (small) frag.
- 2 c/ware jar rim frag.
- 1 double edged c/ware jar rim frag.
- 1 echinus bowl rim frag.
- 1 plate (c/ware) rim frag.
- 1 fish plate base frag.
- 2 c/ware bowl rim frag.
- 1 echinus body sherd?

biton rim

EP/1721  
 still working digging to foundation. a clay level was  
 reached which was only a few metres thick but contained no  
 sherds, base or charcoal. It was decided to continue digging  
 through this floor? level in search of the stone foundation  
 one to three + depth of pit the point in the corner is  
 roughly around the process of 20.1 removed from  
 trench.  
 somebody in the village is not today - tonight is a day  
 to digger tunnel and we will see most of our workers  
 at morning for further assistance.

15/9/93

The sloped stone over the drain appears to be just  
caused by erosion as it is only a small section of a  
large stone which had severe surface degradation.

Jebel has been reached - depth 3.55m (from 5 barik) <sup>measured</sup>

