

JEBEL KHALID 1993  
ACROPOLIS T39, T41, T44

Labib Sibai

T 39

Tu 14/9/93

This trench has <sup>been</sup> opened north west of colonnade. Takeoff to, in soil from the surface, there are many stones which don't appear to be worked.

- \* find small coin which has about 0.8 cm diameter in Locus 1, P bag, 1
- find fragment of blue glass Locus 1, bag, 2
- Pottery Locus 1 bag, 3.

\* inv. 93.145: Ant. iv (175-164): theopolis mint

T 39

We 15/9/93

still going to remove another 10 cm surface soil still finding flint stones, now I'll try to remove ~~not~~ stones which don't appear to be worked

Now we are in Locus 2

- ① find piece of worked flint which lost the narrow ~~back~~ head
  - ② find broken figurine
- there are big stones and many small stones.

T39

th 16.9.93

we are removing loose stones, checking for any marked signs.  
 The trench is locus [3] with light friable wind-blown dust, the soil appears uniform throughout the trench. A metal frag (nail?) is [3] (1). [3] (2) is a figurine frag. some guttae + cornice moulding has also emerged from the colonnade. [3] (3) is metal clamping; [3] (4) is glass frag. The soil is all from the same consistency. [3] (5) is a metal object from the same locus. there will be ~~two~~ be two bags from the day of pottery, [3] (6) bags 1 + 2

T39

sat 18/9/93

we still taking off 10 cm of soil and today we arrived to locus "4", and removing fill stone from ~~the~~ south east corner, we've got a lot of pottery, and the stylobate begin to appear from the west side. find lamp in the north west corner which belong to Islamic age, Dr Clark opinion. we've got two pieces of worked stone ~~which~~, one of them a piece of cornice moulding, the other a piece of fluting column, we've got fragment of bones, and fragment of metal, and we've got spindle wheel in north west corner. the color of the soil change a little bit, "ashy grey".

T 39

Sun 19.9.1993

Today we are going to take off the last layer of the soil and we will finish this trench today because we arrived at the stylobate level, and I think we will finish in ~~3 hours~~ <sup>floor level</sup> tomorrow morning and Grayson will take aperture and after that I'll begin to dig new trench in west side of T 39. we found cotay corner stone which has architect shape

JK

AK

T. 39

Mon 20.9.93

clearing at floor level in E end of trench. Alion-headed spout has come up in the bank as well as a coin [E] (1) with clear SC on one side (! Republic? Roman). We will clear the trench + photograph before completion. The coin was found outside the stylobate, within the courtyard, in the shallow fill before the floor - [E] (2) Pottery. Photographer drawn.

= 93.212 + Newz!

JK

AK

T. 41

Mon 20.9.93

Doing today the first loc. of top soil. locus [1]. we expect to find the back wall of the colonnade. [1] (2) is pottery.

JK

AK

Tu 21.9.93

T 41

Today I start digging in new trench no. T 41. remove the surface soil so we are in locus [1]. we find 2 peads in the middle of trench ~~we~~ I give tag [1] (1) we've got tumble stones many different size we removed ~~at~~ megorety of stones which set on baulks. I think we've got appear to wall which riched East-west direction at south side of the trench. we will see see tomorrow.

JK

AK

we 22.9.93

T 41

L.S

still taking off loc from the surface soil. we've got mital frag [2] (2) . pottery [2] (1) , Bones [2] (3) . nothing clear yet. we've got mital frag [2] (4)

JK

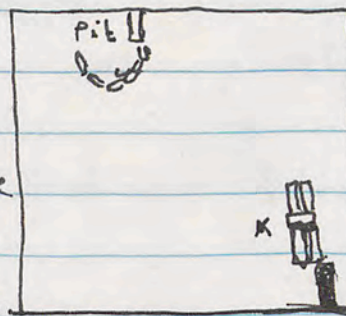
AK

Fr 23.9.93

T 41

L.S

I think the wall which reached from east to west at the south side of the trench is going to be clear. I think there is a pit ~~is~~ becomes clear. I don't sure yet. we've got ~~the~~ red plaster frag in (X). we've got charcoal [3] (1) from a pit. we've got glass frag [3] (2). pottery [3] (3) . Bones [3] (4)



JK AK sat 25.9.93 T.41

now Ian in locus [4] we took out majority of tumble stones, and and remove stones which I thought there is a pit, now it's clear there is no pit. we've got charcoal frag. [4] (1), metal frag and nails [4] (2), metal? pin [4] (3), metal frag [4] (4), Base lamp frag [4] (5), charcoal [4] (6), Pottery [4] (7), Bones [4] (8)

JK AK sat 25.9.93 T.41

clearing next 10 cm across trench - slowly. I'll call today's level locus [5] (1). A wall is emerging E.W + we presume N.S on the E side of the trench. [5] (1) is some bead frags no doubt from clamping [5] (2) pottery.

JK AK sat 25.9.93 T.41

JK AK sat 25.9.93 T.41

JK AK sat 25.9.93 T.41

now Ian in locus [4] we took out majority of tumble stones, and and remove stones which I thought there is a pit, now it's clear there is no pit. we've got charcoal frag. [4] (1), metal frag and nails [4] (2), metal? pin [4] (3), metal frag [4] (4), Base lamp frag [4] (5), charcoal [4] (6), Pottery [4] (7), Bones [4] (8)

JK AK sat 26.9.93 T.41

clearing next 10 cm across trench - slowly. I'll call today's level locus [5] (1). A wall is emerging E.W + we presume N.S on the E side of the trench. [5] (1) is some bead frags no doubt from clamping [5] (2) pottery.

JK AK sat 26.9.93 T.41

JK AK sat 26.9.93 T.41

JK AK Mon 27.9.93 T.41

now we are in locus 6. the wall which reaches f east to west on the south side of T.41 becomes to be clearly. we've got lamp frag 6(1), loom-weight 6(2). we remove the part which I thought probably wall reaches f south to north nearly in the middle of the trench. we've got nail frag 6(3), charcoal 6(4), plaster-red colour 6(5), glass frag 6(6), piece of worked stone.

JK AK Tue 28.9.93 T.41

we are going the east side of the trench, we expect to find a wall reached at from south to north. we've got clamping metal frag 7(2), charcoal 7(1), nail frag 7(3), surgical or makeup instrument 7(4), glass frag 7(5), we just arrive to the wall which we expect it. Pottery 7(7)(2) - Bones 7(8), Plaster frags. pinhead 7(6)

JK AK Wed 29.9.93 T.41

It's finished finally.

Th 30.9.93 JK AK T.41 L.S

The work will finish today at 7.0'clock, my workmen helping yesterday today.

1-2-3-4 days off

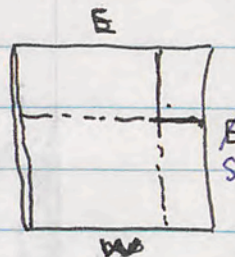
Fri 5.10.93 JK AK Mo 5.10.93 T.42

we start today in new trench T.42 to further north of (T.39) (T.41) we are working to remove the soil surface.

we've got a piece of glass 1(1), nail frag 1(2) Coin 1(3). now there is two walls coming clear in the south East corner. first one reaches from south to north, other from E to W.

1(4) pottery.

\*93.483 Ant. VIII (126-96)

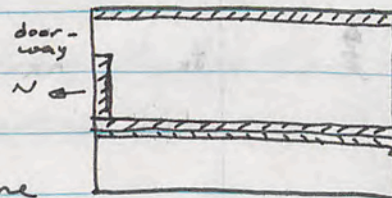


JK AK T.44 Tue 9.10.93 L.S

continuing to clear surface soil and stone tumble from throughout the trench.

This level I'll call Locus 4 today

so far a N.S wall is emerging as well as the wall in the S.baulk. 4(1) is a lamp frag. from close to the N.S wall in mid-trench. 4(2) is a metal applicator (v. fine) from same location as 4(2).



Two complete worked blocks have been removed from the surface level

one: 57 x 40 x 20 the other 66 x 50 x 20

We are trying to cover the first 50cm or of topsoil + rock tumble. the soil appears to have been heavily disturbed, presumably from stone-rocking, there is a bag of bone, small one of charcoal + pottery is 4(3)

JK AK Tue 6.10.93 L.S

There no work

JK AK Wed 7.10.93 L.S

we've got Brooch frag [3] ①, ring small ring [3] ②  
nail frag [3] ③, small black bead [3] ④, charcoal [3] ⑤  
and the N/S wall which appear on thursday from the N/E  
corner begin to reveal from the S today. Pottery [3] ⑥.

JK AK Thu 8.10.93

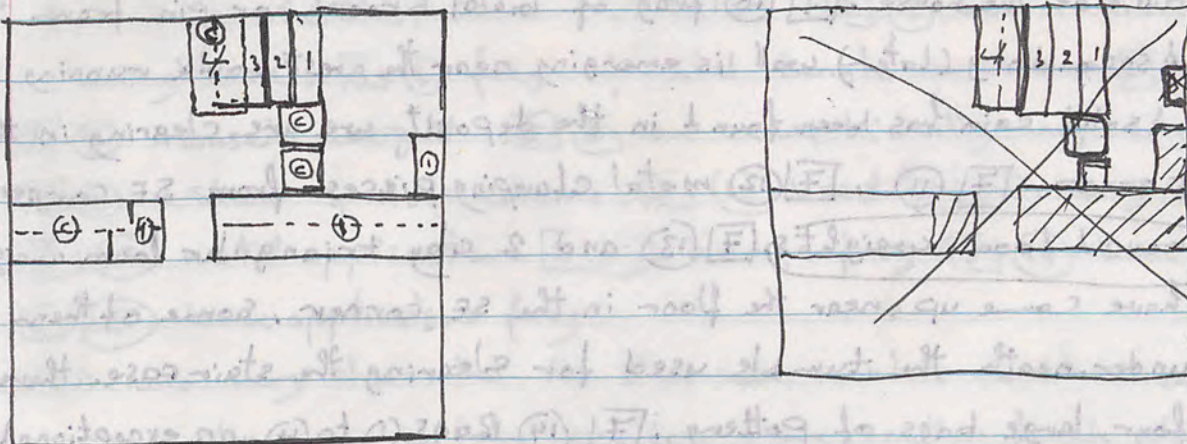
Friday

93.600 : vS  
in Kappo Mas

JK AK Sun 10.10.93 T.44 L.S

we still digging in this trench, we got glass frag [5] ①.  
we found post holder stone, and a big worked stone from  
the corner walls, the two walls become more clear, and we, ex  
got new later wall which cross the trench from E to W in  
the middle, nearly, we've got nail frag [5] ②.  
A stone staircase has emerged adjacent to the later wall. So far  
this morning four risers have been cleared. A second glass  
fragment has been bagged with [5] ①, Pottery [3] ④ [5] ⑤  
Bones + charcoal [6]

JK AK Mon 11.10.93 T.44 L.S



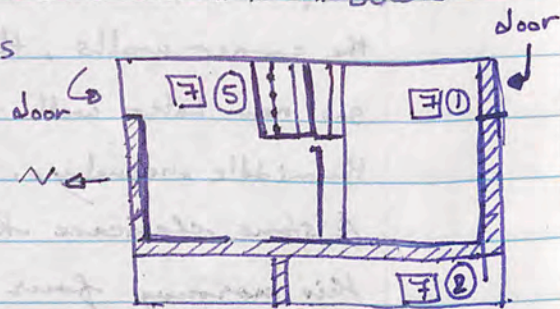
we are still digging, four risers getting more clearing, the third one  
is double and covered by plaster from all sides. we've got stone complete  
stone it's dimension (52.5 x 43 x 31 cm).

we've got Agate bead [6] ①, spindle whorl [6] ②, [6] ③ nails frags  
[6] ④ glass fragments [6] ⑤ small metal pin, [6] ⑥ a well-  
preserved coin from the SE corner (in loose deposit), [6] ⑦ fragments  
of a metal dish (found near coin [6] ⑥), [6] ⑧ charcoal, [6] ⑨ [6] ⑩ [6] ⑪ Pottery  
[6] ⑫ Bone, [6] ⑬ 8 mud loom awl, [6] ⑭ Bone, [6] ⑮ X

I'll call today locus [7] as we <sup>go</sup> ~~deposit~~ down through the deposit of light wind-blown dust towards the floor level

93.625 US [7] ① is a small coin (agreek obol) from the SE corner, well down towards floor level at the bottom of the steps

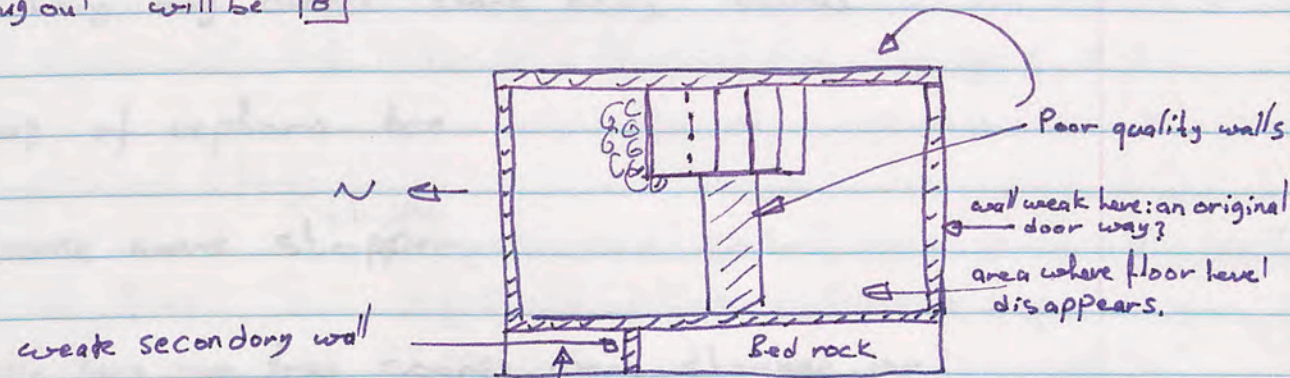
the stair case has emerged as a poor later construction re-using original building blocks & based on a rubble fill.



[7] ② is a fine needle or pin, at ground level, along with a great deal of bone. [7] ③ are five lamp frags from the same locus as [7] ② and [7] ④ is a large nail from the same area, [7] ⑤ is a metal frag from the NE corner, likewise [7] ⑥ 2 loom-weights, unusually made of bone 2 [7] ⑨ a frag. of a metal ring. It appears there is a doorway in the S. bank matching that in the N. bank. Trench level has been reached in the area of [7] ② without encountering a floor, implying this area was outside the house. [7] ⑩ frag of metal brooch or pin from SE corner. A secondary (later) wall is emerging near the west bank running E.W.

93.624 Ant VII A solid coin has been found in the deposit we are clearing in the N.W. corner, [7] ⑪, [7] ⑫ metal clamping pieces from SE corner, 9 clay round loom weights, [7] ⑬ and 2 clay triangular loom weights have come up near the floor in the SE corner, some of them from underneath the tumble used for clearing the stair case. there are four large bags of pottery. [7] ⑭ Bags ① to ④, an exceptionally large bag of bones and a small bag of charcoal.

we are clearing to-day to bed rock or floor levels. the locus through out will be [8]



the area on the west side has been cleared to bed rock. In the NE corner the tumble has proved unstable & we are clearing away the bank to reveal the wall in the bank. In the SE corner there is a firm floor where I presume another step rested but towards the W it disappears. There a large number of step rested artefacts have emerged.

[8] ① glass frags including arm frag. [8] ② pierced shell (from necklace). [8] ③ small clay loom weight or weaving weight. [8] ④ two bone shuttles, semi-circular. [8] ⑤ a coin from this floor-clearing level, [8] ⑥ frag of metal bangle circular. [8] ⑦ a base weight. [8] ⑧ an exceptionally large bag of nails. [8] ⑨ 2 stone spindle whorls, [8] ⑩ bead, [8] ⑪ along of coin ring. [8] ⑫ metal applicator. [8] ⑬ bronze frag. [8] ⑭ bone bangle frag. [8] ⑮ bone applicator frags.

It is now very clear that the stair case is a late construction, reusing worked stones. one of them roofing stone, another finely plastered in white, the whole construction sitting on a rock foundation of field-stones. There is a doorway in T.44 to the N for access into the courtyard and S into the colonnade.

Pottery from the day is [8] ⑯, with another large bag of bones. the trench was cleaned & photographed.

\* 93.652: US [ Aleppo Museum ]

JK AK T39 16.9.93 [3] (6) Bag 1

Long bag coarse ware body sherds

2 frag of unphora toe

1 Coarse ware stopper

Rim 3 very long rim frag coarse ware storage jar

Body 1 Coarse ware body frag incised line

1 " " " " Pitched interior

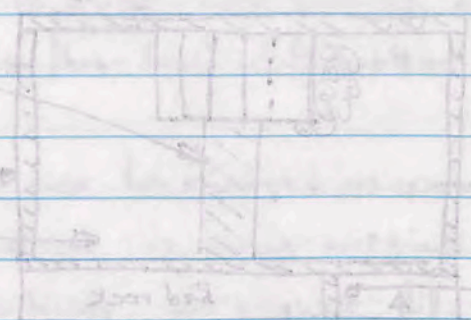
3 body frag - red - orange - Brown

Rim 5 Echinus rim frag 2. with weak red glaze

18 Coarse ware rim frag

Base 4 Rim base frag 1. with red paint 1. fish plate

Handle 3 Small strap handle frag





Jk Ak 18.9.93 T39 [4] (5) L.S

- Rim 3 Echinus rim frag
- 1 Red glaze rim frag fine bowl
- 5 Coarse ware rim frag

- Base 3 Coarse ware footed base frag
- 1 Large coarse ware base frag
- 1 Red glaze base frag long plate

Body 1 Body frag weak black glaze

[4] (2)

- Rim 1 Very coarse rim frag SCORING at neck.
- 1 ~~rim~~ rim frag fine ware orange and red interior.
- 3 Echinus " " "
- 11 Rim frag small vessels.

Base 7 Ring base frag. 1. large

Handle 1 Lug handle coarse ware gauged line body frag.

- Body 1 Body frag green glaze
- 7 coarse body frag with incised line.
- 2 Body frag weak black paint.
- 1 " " brown fabric parallel wheel lines.
- 2 " " smooth black surface.
- 1 " " weak red interior.

13 Coarse cooking ware frag.

Jk Ak 15.9.1993 T39 L.S

- 3 small tiles frag c/w
- medium size of coarse ware body sherdes

Base 16 Ring base frag

- 4 Handle frag 1. strap 2. double-need

body 4 body frag of cooking ware.

8 " " with paint or incision.

7 Handle root frags

Rim 6 Echinus rim

- 1 fish plate rim frag
- 1 plain rim frag
- 1 rim frag c/w jar

Jk Ak 19.9.93 [5] (1) T39 L.S

medium size of c/w body sherdes

Base 2 Base ring frag

Handle 3 Handle frag

Rim 4 Echinus rim frag

- 5 Rim frag c/w jar
- 1 c/w bowl rim frag with pierced hole
- 2 fine rim frag red glaze
- 1 fish plate rim

3 Rim frags out-turned.

2 vertical rim frags.

Body 6 Body frags of cooking ware.

2 " " incised ribbing.

Jk Ak 21.9.93 [1] (2) T41 L.S

Rim 3 fish plate rim frags.

1 echinus rim frags.

3 c/w rim #1.

Base 1. fish plate base frags.

4. c/w ring base frag.

Handle 1 strap handle frag.

1 handle frag with rope center.

1 strap handle and body frag.

1 small c/w handle frag.

Body 1 Body frag with double incised lines

1 c/w " with gauged lines

1 cooking ware body sherd

1 body frag weak brown paint interior. double incised lines

unguentarium. frag bagged as object. Bag (2)

18 Jk Ak 20.9.93 T39 [6] (2) g.w.c/L.S

Rim 1 fish plate rim frag

3 c/w rim frag

Base 5 c/w base frag footed

Body 2 Body sherd weak black and red paint

1 body frag cooking ware.

1 c/w neck frag.

Jk Ak 16.9.93 [3] (6) g.w.c/L.S

Handle 1 handle with rim c/w strap handle.

1 ~~c/w~~ cooking ware strap handle

Rim 3 Echinus rim frag weak red paint

2 fish plate rim frag

3 rim frags c/w small basins vessel

Base 5 c/w base frag footed ring base

Body 1 amphora toe

5 c/w body sherds gauged lines. "incised"

2 cooking ware body frag. thick

1 c/w stopper.

2 body frags red glaze.

Jk AK T41 [5] [2] gwc/L.S

Medium bag body sherd frag

Rim 14 Echinus rim frags.

2 fish plate rim frags.

3 c/w rim frags.

4 out turned rim frag 1, with top groove.

3 thickened rim frag.

1 umphora toe.

Base 1 fish base ring frag

5 c/w base ring base frag.

3 ring base frag.

Body 1 c/w body sherd with curve frag.

2 " " " " pitch inside. frag.

1 " " " " cooking frag.

1 " " " " nibbed. frag.

1 " " " " brown paint, inside, outside.

1 " " " " with incised lines.

1 " " " " color paint.

Jk AK 25.9.93 [4] [7] L.S

Large bag c/w body frag.

Base 2 assorted ring base frag.

1 " " " " fish plate

1 " " " " plate? red glaze.

1 " " " " bowl?

Handle 1 strap handle frag.

3 small c/w handle frags.

1 umphora toe

Rim 10 Echinus rim frags. 1, thick rim with <sup>one</sup> outside incised line.

1 double rim frags. c/w jar with externally shallow groove.

3 rim frags with <sup>one</sup> incised line from the inside.

9 assorted c/w rim frags.

1 rim frag (greasy) gray ware.

6 fish plate rim frags.

1 gray rim frag (bowl).

10 c/w rim frags.

JK AK T.44 [5] (4) 10.10.93 L.S

many pieces of c/w big jar pitched interior ~~the rest big of body~~  
~~shards shards one of them has strap handle~~

T.44 [1] (1) 6.10.93 L.S

Body small collection of c/w body shards

Base 2 Base frags 1, with black line above out turned foot

Rim 8 c/w rim frags  
2 fish plate rim frag  
2 Echinus bowl rim frags.  
1 strap handle frag.

Body 4 Body shards with pitched interior (probably related) [5] (4) 10.10.93  
1 = " " red glaze  
2 " " c/w gauged lines  
3 frags cooking ware

[5] (5) T.44 10.10.93 L.S

Long bag of c/w body shards

6 c/w ring base frags  
1 " " " with black interior  
3 strap handle frags c/w  
1 " " frag brick red fabric.

Rim 13 c/w rim frags 1, fish plate rim frag with incised line in interior

5 Echinus rim frags

1 rim frag with gauged lines in exterior outside

1 out turned rim frag brown paint

Body 12 cooking ware body shards + metallic glaze body shards (1) red glaze red frag  
1 body shard gauged ware (1) small body shard red glaze

[5] (5) T.44 10.10.93 L.S

frags of one long c/w vessel with complete lug handle

Rim 2 rim base frags 1, of fish plate

3 cooking ware body frags

[4] (3) T.44 9.10.93 L.S

medium size bag of body shards

1 umphore toe

Handle 1 strap handle frag

base 2 ring base frags 1, with red line above out turned foot  
1 ring " " red glaze

Rim 1 c/w rim frag  
1 red glaze rim frag of bowl  
1 rim frag with brown paint interior  
1 " " " " " "

3 red glaze body frag

1 c/w small stopper

1 body sherd brown glaze the lines of <sup>rouletting</sup> ~~relat~~

1 cooking ware body frag

1 c/w frag with black line

JK AK T.44 7.10.93 [3] (6) L.S

Small bag of c/w body sherds

Rim

- 3 c/w rim frag
- 1 fish plate rim frag
- 3 Echinus rim frag
- 1 rim frag red glazed
- 1 " " weak red paint

Base

- 3 c/w ring frag
- 3 cooking ware body sherds
- 3 body sherds of gauged ware
- 1 " frag weak brown paint
- 2 " sherds red glazed, with incised ~~per~~parallel lines
- 1 " frag weak red paint

JK AK T.44 11.10.93 [6] (15) L.S

medium size bag c/w body frag

- Rim
- 4 fish plate rim frags
  - 5 c/w " " "

- Base
- 1 Base of fish plate
  - 1 ring base red glazed

- Body
- 4 red glazed plate frags
  - 2 parthian green glaze rim frag
  - 1 umphara toe
  - 1 Body sherd gauged ware

- Handle
- 1 handle base c/w
  - 2 cooking ware body sherds

4 frags of weak brown bowl un footed

1 ring base frag small vessel weak red paint

- Rim
- 2 rim frags weak red or brown paint, 1 with mind hole
  - 2 Ech rim frags red glaze

JK AK T.44 final locus ③ 29.9.93 Gue/L.S pottery ③

1 long bag of c/w body sherd

Handle

2 c/w handles.

Rim

- 8 c/w rim frags.
- 2 fish plate rim frags
- 4 Echinus bowl rim frags ~~2 black glaze rim frags~~
- 2 black glaze rim frags

Base

5 c/w ring base frags.

Rim

- 1 rim frag weak red paint.
- 4 Body sherds weak red or brown Paint

JK AK T.44 11.10.93 ④ ⑨ L.S

long bag c/w body sherds many belong to long vessel include cooking ware and pitch pitched fabric

- 1 ring base frag
- 1 fish plate rim frag.
- 1 c/w stopper
- 1 red glaze body frag
- 1 body frag gauged ware.
- 1 " " orange fabric with black paint

1. body sherds with parallel grooves

JK AK T.44 12.10.93 ⑦ ⑭ Bag ① Gue/L.S

long bag of c/w body sherds including cooking ware and pitched interior

- 1 unphora toe
- 1 round handle frag
- 1 c/w stopper

- 5 c/w rim frags
- 2 Echinus bowl rim frag weak black paint on exterior
- 1 rim frag weak black paint + (2) brown paint
- 2 ring base frags
- 2 fish plate base frags
- 1 ring base frag weak red glaze

1 red glaze body sherd.

- 1 body sherd weak black paint
- 1 " " orange fabric

- 1 fish plate rim frag.
- 1 out turned rim frag.
- 1 handle frag.

1 body sherd gauged ware

JK AK T.44 12.10.93 [7] (14) L.S. 4/gwc  
Bag 2

one long bag c/w body sherds including cooking ware  
and pieces of with pitched interior.

1 red glaze body frag

1 pantheon rim frag

3 c/w rim frags

8

AK JK T.44 12.10.93 [7] (14) L.S./gwc  
Bag 3

medium bag of c/w body sherds including cooking ware

1 long pithos toe

2 c/w rim frags joining

1 body sherd with <sup>m</sup>capit. + complete lug handle

2 ring base frag red interior

1 Echinos rim frag weak red paint

1 black glaze rim frag

1 handle frag exterior groove

JK AK T.39 5.10.93 [4] (2)

Small c/w collection

Rim 3 c/w rim frags (2 mortarium)

Body 2 body sherds red point ware

Base 1 Ring-base c/w frag.

JK AK T.41 20.9.93 [1] (1) L.S

1 small bag c/w body frags

1 c/w footed base frag.

Rim 2 c/w rim frags - 1 fish plate

1 out turned c/w rim frag

Body 1 c/w body frag - decorated with connected circles on exterior

JK AK T.39 14.9.93 [1] (3) L.S

small bag body sherds

3 c/w rim

1 c/w base fish plate

3 body frags / black, brown, pinkish

Jk Ak T.41 22.9.93 [2] (1) L.S

Diagnostic sherds

- 8 fish plate rim frags
- 5 shallow bowl rim frags (one with new )
- 7 closed vessel rim frags.
- 1 bowl, red slip?, rim frags.
- 2 large closed vessel rim frags
- 1 sherd
- 4 body sherds (c/w) with incised decoration.
- 2 amphora toe frags.
- 1 - diagnostic body sherd, blue in/ex glaze.
- 4 handle frags
- 1 strap handle (complete)
- 8 closed vessel also frag

Jk Ak T.41 27.9.93 [6] (3) L.S

- 3 fish plate rim frags
- 2 shallow bowl red polish rim frags
- 3 shallow bowl rim frags.
- 2 Body sherds incised decoration
- 4 bowl rim frags. red polished.
- 1 " " with incised fluting design.
- 5 closed vessel rim frags.
- 1 bowl sherd. red polished, rope incised
- 2 rim sherd, red slip
- 1 fish plate base frag.
- 4 closed vessel base frags.
- 1 rim frag. small plate? red slip.
- 1
- 1 closed vessel rim & handle frag.
- 1 plate/bowl? base handle base. frag.
- 1 small bowl body profile.
- 1 body sherd with handle base.

Jk Ak T.41 28.9.93 [7] (7) L.S

- 1 handle frag.
- 1 fish plate rim frag. red slip.

---

- 2 red polish bowl rim sherds (joining)
- 1 red " " " " (beaded edge)
- 4 fish plate rim frags
- 3 modified sherds
- 2 closed vessel rim frags
- 1 " " ring base (small) complete.
- 1 " " " " complete (incised ~~decor~~ decoration)
- 7 shallow bowl rim frag.
- 1 amphora toe.
- 1 spout frag.
- 3 handle bases.
- 3 " frags.
- 1 small bowl body ~~frag~~ profile
- 3 bowl rim frags.



JK AK T41 [7] (7) 28.9.93 L.S

- 2 closed vessel rim frags. (joining to complete).
- 1 " " base ring (complete).
- 1 fish plate base frag.
- 2 closed vessel base frag.
- 1 modified sherd.
- 1 amphora toe frag.
- 3 fish plate rim frags.
- 4 shallow bowl rim frags.
- 1 closed vessel rim + neck frag.
- 1 " " " frag.
- 1 open bowl (stamped internal design) base frag.
- 1 bowl rim frag.
- 1 body sherd with handle base.
- 1 " " profile (small vessel?).
- 1 amphora toe frag.
- 1 figurine frag?
- 4 non-diagnostic cooking pot sherds

JK AK T41 [4] (7) 25.9.93 L.S

- 340 non-diagnostic plain<sup>a</sup> ware body sherds.
- 3 " " cooking pot sherds.
- 2 " " red polished body sherds.
- 1 amphora to.
- 2 amphora toe frags (joining)
- 10 closed vessel rim frags.
- 4 " " base "
- 1 fish plate " "
- 4 handle frags.
- 1 red polished open bowl base frag.
- 1 red " body sherd incised hatch decoration<sup>a</sup>
- 6 fish plate rim frags.
- 6 bowl rim frags.
- 1 large claw bowl rim frag.
- 1 claw vessel rim frag.

JK AK T.44 [1] (4) 5.10.93 L.S

small bag of c/w body sherds.

- 1 amphora base
- 3 c/w ring base frags
- Rim 6 c/w rim frags
- 4 fishplate rim frags.
- 3 Echinus rim frags.
- Handle 1 strap handle frag.
- 2 rim frags weak red paint.
- 1 body sherd gauged ware.
- 1 weak black paint lamp frag.
- 1 gritty green body sherd.

JK AK T.41 [3] (3) 23.9.93 L.S

small bag of c/w body sherds.

- 4 ring base frags. → 1 fish plate
- 1 small handle frag.
- 4 c/w rim frags.
- 2 Echinus rim "
- 2 cooking ware body sherds.
- 1 body sherd gauged ware.
- 1 black glaze body sherd.

JK AK T.44 [7] (14) 12.10.93 L.S/gwc

Baggy

medium size bag c/w body sherds

- Rim 14 fish plate rim frags. including full profile.
- 11 c/w rim frag 2p with pitched interior
- 1 Echinus rim frag.
- 1 gauged body sherd.
- Handle 6 handle frag 2 of them cooking ware.
- Body 2 cooking ware body sherds.
- 3 body sherds with mind holes. 1, of them
- 1 cooking ware rim frag.
- 1 figurine frag.
- Bas 10 ring base frags. 3 of them fish plate.
- 1 ~~flat~~ unfooted base frag.
- 1 round bowl base frag.
- 9 red glaze body frags. 2
- 2 red glaze rim frags.
- 1 red amphora frag with parallel lines on exterior

T.44 [8] (16) 13.10.93 L.S./gwe.

medium size bag of body sherds.

Rim 11 clear rim frags 1 of them cooking ware.

1 fish plate rim frag.

7 Echinus frags.

1 black glaze rim frag.

1 rim frag with black + red paint

1 " " pouring spout.

Body 2 body sherds with mind hole

base 7 ring base frag. 2 of which are of fish plate.

6 clear handle frags.

Rim 4 red glaze rim frags.

8 ~~but~~ cooking ware body sherds.

\* 3 green glaze sherds one with handle base.

BRYAN TUNKS

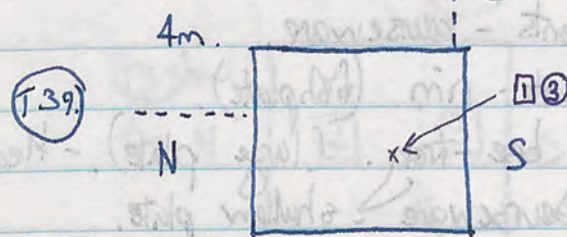
29.9-14.10 29/9/93.

1993

T.43.

JK. Ahrop.

NE 4.5m. T37



Began excavating new trench. Original team divided into two. Today just one locus. [1] Soil very powdery. Top 3 inches deposits from previous trench. Appears that top of wall emerging from soil.

This runs West from T.37.

Small stone turned shell - stone/fossil? - Bagged as object [1] (1).

Pottery Bagged as: [1] (4)

Small figurine fragment - hand, bagged as [1] (3). Found near centre of TAB.

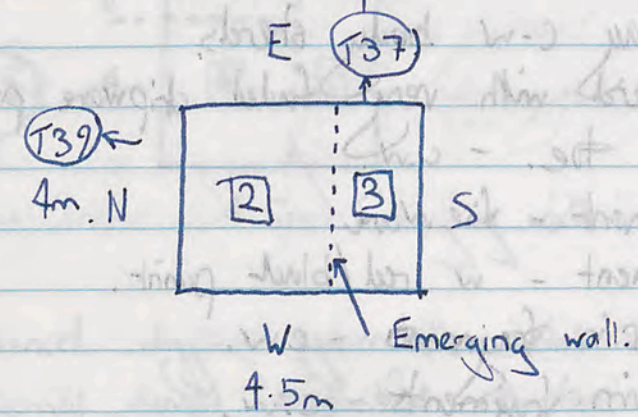
143. JN. Ahrop. 29/9/93.

- 1④ - 1 Med/large bag courseware body sherds.
- 4 - Fragments fish plate bases - courseware.
- 11. - Ring base fragments - courseware.
- 10. - Courseware fragments - rim (fishplate).
- 1. - large flat ring base frag. (large plate). - Heavy red slip.
- 1. - Flat base frag courseware - shallow plate.
- 1. - Courseware body sherd frag - patterned (extolating).
- 3. - Fragments red-gaze fineware with gorged radiating pattern.
- 1. - Double-rim (glaze?) fragment (courseware - platter? - poor condition)
- 3 - Outturned double-rim - rim fragments / courseware.
- 1 - Triple rim (outturned " "
- 2 - Single rim " " "
- 5. - Echinus rim fragments. / courseware.

143 JN. Ahrop. 30/9/93.

- 2②
- 1 - large bag c.w. body sherds.
- 1 - fragment (probably near rim) pie-crust c.w.
- 7 - Ring-base fragments - c.w.
- 3 - fish plate base fragments.
- 5 - Echinus rim fragments - 2 with neck red slip.
- 2 - Base fragments - plate - 1 with red slip.
- 2 - Rim fragment c.w. - 1 with external parallel gorged lines.
- 18 - fish plate rim fragments c.w.
- 1 - Shallow dish rim fragment. - c.w.
- 6 - Handle fragments c/w.
- 1 - lrg handle attached to c/w. fragment.
- 1 - Handle fragment - twisted (poss orange fabric).
- 3 - Probable spur/rim fragments c/w. 1 with local 'green' fabric.
- 3 - Assorted rim fragments c/w
- + large.

T. 43. JN. Ahrop. 30/9/93.



Commenced Jay 2 on trench. 143. Definite wall emerging running through entirety of trench. (Due West). Hopefully this will be met by wall from T39. (Back wall).

- 2① Is a small glass fragments.
- 2② Is pottery.
- 2③ Is bones.
- 2④ Is pottery.
- (F) [15] ...

T43 JK. Athrop. 30/9/93

2 4

- 1 - Small bag c-w body sherds
- 1 - Body sherd with very faded chipware pattern, c/w
- 1 - Amphora toe. - c/w
- 1 - Rim fragment - fine ware
- 1 - Rim fragment - w red/black paint.
- 3 - Fishplate rim fragments - c.w.
- 3 - Assorted rim fragments - c.w.
- 1 - Echinus bowl rim frag. - near-red slip.
- 1 - Body sherd - red glaze
- 2 - Connecting fragments - (probable toe of vessel). c.w.

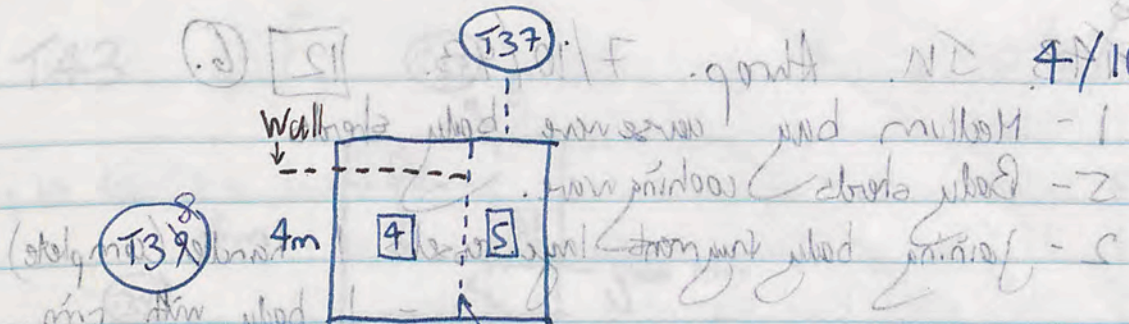
T43 JK. Athrop. 6/10/93 10 5

- 1 - Very small bag - c/w body sherds.
- 1 - c/w rim fragment - spect?
- 1 - c/w rim fragment with handle frag. attached.
- 2 - Ring-base c/w fragments. 1 with spiral pattern.
- 2 - Amphora toes. small c/w.
- 1 - Fish plate rim fragment c/w.

T43 JK. Athrop. 7/10/93 12 7

- 1 very small bag - c/w body sherds.
- 1 - c/w fragment (body sherd) with externally incised horizontal lines.
- 1 - c/w "greasy grey ware" body frag.
- 2 - Echinus bowl rim fragments - chip ware.
- 1 - Body sherd fragment - painted near orange - c/w
- 2 - Mortarium rim fragments - c/w.
- 1 - Base fragment - unfaded near red interior paint. - c/w.
- 2 - c/w rim fragments - 1 spect / 1 double rim - c/w.
- 1 - cooking ware fragment - body.

T43 JK. Athrop. 4/10/93



Commenced digging again after break. Wall clearly emerging with minimal trouble encountered. The first nail fragment is 4 1. Glass fragments are 4 2. Nail/curved metal piece? is 4 3. Pottery is 4 4 + 4 5. Bones are 4 6. Wall emerging from T39. Thickness not yet determined.

T43 JK. Athrop. 4/10/93

Water filling the trench has been removed. The wall is clearly visible. The first nail fragment is 4 1. Glass fragments are 4 2. Nail/curved metal piece? is 4 3. Pottery is 4 4 + 4 5. Bones are 4 6. Wall emerging from T39. Thickness not yet determined.

✓ 143. JN. Athrop. 7/10/93. [12] (6)

- 1 - Medium bay coarseware body sherds.
- 5 - Body sherds cooking ware.
- 2 - Joining body fragments large vessel - 1 handle (complete) - 1 body with rim.

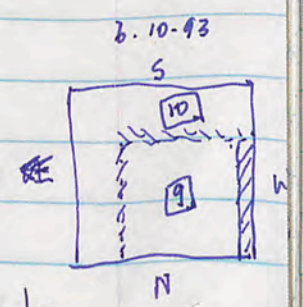
Both fragments patterned with wavy line around entirety of vessel. (parallel) coarseware.

- 3 - Dishplate rim fragments.
  - 1 - Body sherd fragment - Parthian green.
  - 1 - Edmian rim fragment - Blue slip.
  - 1 - Amphora toe fragment - c/w.
- 2 - Rim fragments - Spout? - 1 double lip. c/w.
- 1 - Coarseware body frag with chip painting.
- 1 - Red glaze plate fragment.
- 2 - Red glaze body sherds.
- 6 - Ring base fragments - c/w.

143. JN. Athrop. 7/10/93 [13] (2)

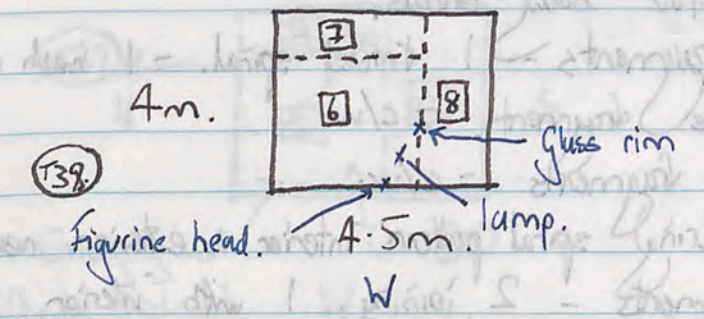
- 1 - Small bay coarseware body sherds.
- 2 - Joining body fragments reddish red paint with parallel vertical incised lines c/w.

- 3 - Edmian bowl rim fragments - 1 red/black chip.
- 1 - Handle fragment - c/w.
- 4 - Dishplate rim fragments - c/w.
  - 1 - Rim fragment - c/w.
- 2 - Spout fragments - c/w.
  - 1 - Body sherd "greasy-grey ware".
- 3 - Ring base fragments - c/w.
  - 1 - Plate base/rim fragment - c/w.
  - 1 - c/w base fragment (orange) with double parallel circles. (interior + exterior).



- 1 - Red glaze base fragment - with reletting

143. [137] (E) 5/10/93.



Trench approximately 1m deep on commencing. Sarah + Zichia nearly completed T39. Metal fragment found in T39 (possible brooch) is [40] (1). Figurine head found approx. 1.2m on West bank. Figurine that of Persian Dancer? - [6] (1) Object.

Glass rim fragment with internal incised lines is [6] (2). Unidentified pottery fragment (spout?) is [6] (3) - object.

Lamp found. (portion of handle + top missing) probable late Byzantine/Islamic? [6] (4). Located on South bank. (mid).

Loom weight is [6] (5). Found near West bank.

Final Bay of pottery from T39. - [40] (2). Pottery is [6] (6) + [6] (7).

6/10/93

Basically continuing to go down in [6] which I'll term locus [9] to-day. We have cleared + swept the remainder of T.38 to its foundation trenches. The EW wall in T.43 appears at this level to be secondary still as does the portion of the NS wall so far uncovered.

Nail frags found near E bank, [40] (1). A stone weight with a hole has been left with the pounder + basalt collection. It is squared [6] limestone. Also from [9] in the fill. A basalt grinding piece also from [9] and a fragment of glass [9] (2).

I have Zahara now working on the S end of the trench: area [10]

The West wall is emerging clearly in the trench. [9] (3) figurine head from near the EW wall. [9] (4) pottery, [10] (5)

T43. Jh. Akrop. 6/10/93. [9] (4). SAT

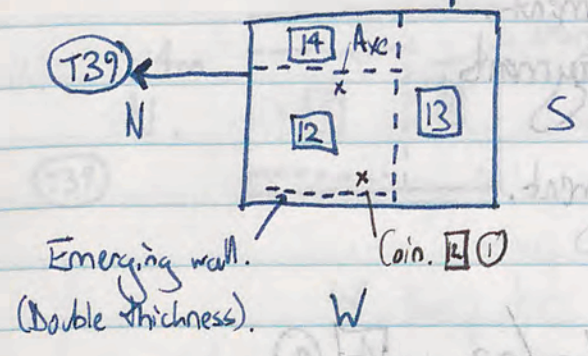
- 1 - Medium bay c/w body sherds.
- 3 - c/w handle fragments - 1 twisted spiral. - 1 weak red paint.
- 1 - Unguentarium toe fragment. - c/w
- 5 - Fish plate base fragments - c/w.
- 1 - Base fragment (ring) spiral pattern interior - exterior weak red paint c/w
- 8 - Ring base fragments - 2 joining. 1 with interior parallel circles. c/w
- 1 - Spout fragment (neck of vessel) c/w - weak red paint.
- 1 - Echinus band rim fragment.
- 1 - Rim fragment (cooling ware?)
- 5 - fishplate rim fragments - 1 weak red paint
- 2 - Plate rim fragments. - c/w
- 1 - Marturium rim fragment
- 4 - c/w assorted rim fragments. (1 probable spout with double external rim.)
- 2 - c/w rim fragments - 1 red paint.
- 1 - red glaze plate fragment - (body sherd)
- 2 - fragments - 1 rim of medium ware with external pattern. (parallel vertical lines) + unpatterned rim. - 1 body sherd with parallel lines red paint.

T43. Jh. Akrop. 4/10/93. [4] (5)

- 85 non-diagnostic plainware body sherds.
- 1 - green/white glaze body sherd.
- 1 - cooking pot body sherd.
- 4 - Coarseware non-diagnostic sherds.
- Diagnostic sherds:
- 4 - fish plate base fragments.
- 7 - fish plate rim frags.
- 1 - Closed vessel base frag.
- 1 - Red paint? - bowl rim fragment.
- 1 - Closed vessel rim fragment.
- 1 - Red polished band base frag.
- 1 - Amphora toe fragment.

T43.

E T37 7/10/93



- Commenced working again on T43. [12] Locus already 2m deep, attempting to get into locus [13]. Appears as if jebel may have been reached in [12].
- [12] (1) is a coin - found adjacent to west wall. ~~93.529~~ missing
  - [12] (2) is a lead mending piece. Found near coin.
  - [12] (3) is an axe - found near E. wall of locus [12].
  - [12] (4) is a loom weight. Found near axe.
  - [13] (1) is a coin found close to surface. missing = 93.529 v. poss modern.
  - [12] (5) is a lead fragment.
  - [12] (6) is Pottery
  - [12] (7) is Pottery
  - [13] (2) is Pottery
  - [12] (8) is bones.

T43. JN Ahrop. 4/10/93. A(5)

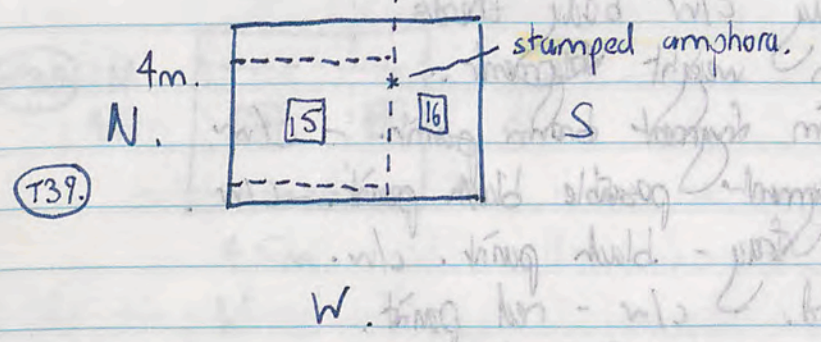
- 1. Cooking pot rim fragment.
- 2. Shallow bowl rim fragments.
- 1. Handle fragment.
- 1. Open bowl rim fragment.
- 1. Base frag. (plate?)

T43. JN. Ahrop. 4/10/93. A(4)

- 275 - non-diagnostic body sherds.
- Diagnostic - Shards.
- 48. Fish plate base frags.
- 15. Fish plate rim fragments.
- 3. Modified sherds.
- 6. Closed vessel base sherds.
- 3. Closed vessel rim fragments.
- 1. Amphora toe.
- 1. Double rope handle fragment.
- 1. Handle fragment (handle spiral?)
- 1. Jug top rim fragment.
- 4. Bowl rim fragments.
- 2. Handle fragments.
- 2. Red slip bowl rim fragments.
- 2. Plate rim fragments.
- 1. Plain rope handle fragment.
- 2. Closed vessel rim frag.
- 1. Plain nave bowl fragment.
- 3. Closed vessel base frags.
- 2. Shallow bowl rim frags.

T37

9/10/93



Opened trench up for final week. Walls emerging as per previous report. 15(1) is a metal object - possible brooch. Found near Sth wall of 15. 16(1) is a stamped amphora handle found approximately 40cm under surface - near wall of T37. = 93.515 = SH 14 c. 184 BCE. Wall continuing from T37 appears to be resting on soil - not bedrock. ∴ Appears to be secondary construction.

- 16(2) is a metal fragment (possibly nail?).
- 16(3) is bones.
- 15(2) is pottery.
- 15(3) is bone.
- 16(4) is pottery.
- 15(4) is charcoal.
- 15(5) is pottery.



T43. JN. Ahrop. 15 (5). 9/10/93

- 1 Medium bag c/w body sherds.
- 1 Stone beam weight fragment.
- 1 Fishplate rim fragment brown paint. - c/w.
- 1 Handle. fragment possible black paint. - c/w.
- 1 Plate rim frag - black paint. c/w.
- 1 Body sherd. c/w - red paint.
- 4 Echinus bowl rim fragments - 3 red chip + 1 local production
- 1 Base fragment (poss rim). - c/w
- 4 c/w ring base fragments - 1 large vessel.
- 1 Fish plate base fragment. - red paint. c/w.

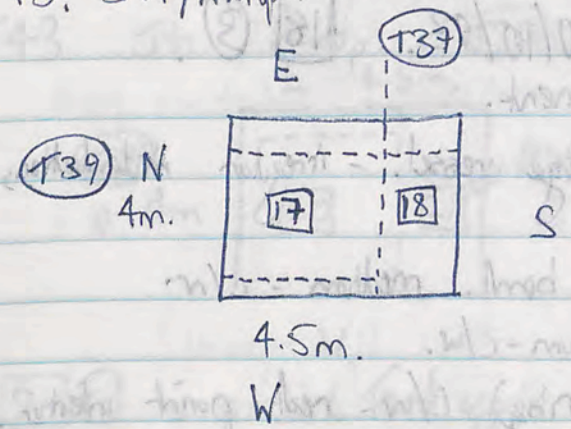
T43. JN. Ahrop. 16 (4) 9/10/93. 16 (4)

- 1 Small bag c/w body sherds.
- 4 Ring base fragments c/w.
- 1 Plate base fragment - red paint.
- 4 Echinus bowl rim fragments. 3/w/ chip ware / 1 Red glaze. fireware.
- 1 Parthian green body sherd. - c/w
- (Fireware) 1 Small open-mouthed vessel. frag - including rim (black exterior - red interior)
- 1 Martarium rim fragment - red paint. (c/w).
- 1 Base fragment - unglazed - c/w - red paint interior.
- 2 Spout/mouth fragments c/w.

T43. JN. Ahrop. 18 (3) 10/10/93.

- 1 Small bag c/w body sherds.
- 1 large c/w rim fragment including double external lip. (grooved).
- 1 c/w handle fragment (possible cookingware).
- 3 Amphora toes - c/w.
- 1 Echinus bowl rim frag. - c/w. red paint.
- 1 Martarium rim fragment - c/w.
- 3 footed ring base fragments - 1 with red paint interior.
- 2 joining fragments flat based vessel/plate. - red/black paint.
- Medium - coarse ware. (semi).

T43. JK/Akrop. 10/10/93.



Commenced work on exposing wall between 17 + locus 18. Locus 18 at depth of approx 1.5m.

18 (1) is a lamp fragment. - Both found near wall between 18 (2) is a figurine fragment (animal) - 18 + 17. Wall now evident continuing on from T39 - all the way through the trench (Southern direction). Locus 17 now depth of 3m in places.

17 (1) is bone.

17 (2) is pottery.

18 (3) is pottery.

Corner (North) of locus 17 wall has stopped possible doorway in south.

T43. JN. Ahrop. 10/10/93. [15] (3)

- 1 Plate (c/w) rim fragment.
- 1 c/w base fragment - large vessel. - irregular indentations on interior.
- 1 - Rim fragment of small bowl. medium - c/w.
- 1 - Ring base fragment medium - c/w.
- 1 - footed base fragment (ring) c/w - red paint interior.
- 1 - Body sherd - c/w red paint exterior + interior.

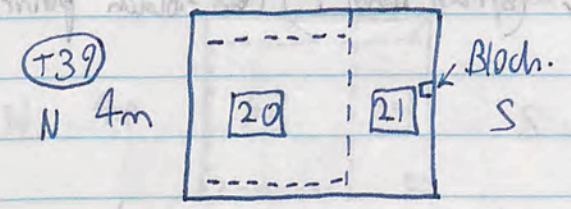
T43. JN. Ahrop. 9/10/93 [15] (2)

- 1 - large bay c/w body sherds.
- 3 - joining frags of fine ware thin bowl - wash black glaze - 1 with lug.
- 2 - fragments fine ware thin vessels - wash black glaze.
- 1 - Ambera toe. - c/w.
- 1 - Base frag c/w - (orange) plate. (ring) redog.
- 1 - Base frag footed. - interior red paint - exterior drip ware.
- 2 - Echinus bowl rim fragments c/w - wash black paint.
- 4 - Mortarium rim frags c/w - 1 heavily grooved external lip.
- 1 - Rim frag - c/w - brown paint (washing ware!).
- 2 - Body frags - both one red paint - red glaze.
- 2 - Joining pieces - footed base bowl - interior brown paint - exterior drip ware.
- 2 - c/w washing ware base (unfooted) fragment. (plates?)
- 1 - c/w ring base fragment (brown paint).
- 2 - Plate rim fragments - both red paint.
- 2 - Spout/rim frags - poss small vessels - c/w.

T43. JN. Ahrop 11/10/93 [20] (2)

- 1 - Medium Bay c/w body sherds.
- 6 - Ring base fragments c/w - 1 wash orange paint.
- 1 - Echinus bowl rim fragment black-red paint.
- 5 - Dish plate - c/w rim fragments.
- 2 - Body sherds - red paint.

T43. JN. Ahrop. [37] 11/10/93. E 4.5m.



\* [21] (1) is a coin. found approx. 2m. down from S/E corner locus [21]. Will attempt today to expose potential doorway. N/E corner of locus [20]. Large Blach. removed. dimensions 95cm - 45cm - 30cm. Bone is [20] (1). [20] (2) is pottery. [21] (2) is pottery.

93. 595. Seleukosii (246-226) i. 2 metres down (in back fill?)

T43. Jk. Athrop 11/10/93 [20] (2)

- 1 - Fine ware rim fragment (small bowl?) red-black point.
- 1 - Handle frag c/w
- 1 - Frag cooking ware.
- 1 - Spout frag c/w.
- 1 - Rim frag c/w Double external lip (grooved)
- 2 - Plate rim fragments - both red point.

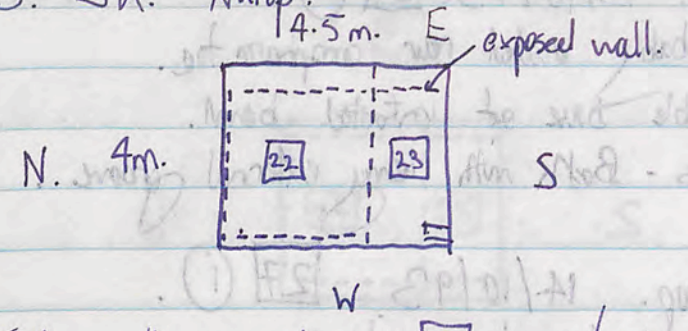
T43. Jk. Athrop. 11/10/93. [21] (2)

- 1 Very small bag c/w body sherds.
- 2 Echinus bowl rim fragments - c/w 1 red point / 1 black point
- 1 Amphora toe - c/w
- 1 fragment 'Parthenon green' ware - c/w (on exterior)
- 1 Vapentarium/amphora? toe - c/w.
- 3 fragments cookingware - 1 body frag / 2 joining frags by handle.
- 1 c/w body fragment - red external pattern ('point')
- 1 Double handle frag. c/w
- 2 Footed rim-base fragments - c/w. 1 red point.
- 1 Base frag (unfooted) c/w.
- 1 Handle frag ~~etc.~~ - very fine - prob small vessel.
- 1 fragment with blue glaze - patterned with parallel lines.
- 3 - Rim frags c/w. - All with double lip + external groove

T43. Jk. Athrop. 13/10/93 [25] (1)

- 1 - Med/large bag c/w body sherds.
- 6 - c/w frags rim base (footed) - 1 brown point.
- 1 - Unfooted base frag. - c/w. - probable plate/shallow dish
- 3 - c/w handle frags - including one with rim/lip fragment. - 1 probable cooking ware.
- 1 - Echinus bowl rim fragments red/drip ware. - c/w
- 1 - fragment fine red ware (glazed) (parallel line on exterior?)
- 1 - frag c/w - red point interior.
- 1 - frag fine Attic ware - with red slip - blue glaze.
- 1 - frag medium ware - brown glaze.

T43. Jk. Athrop. 12/10/93



Today wall exposed in [23] in S/East. Continues south from locus [22]. Looks as if 1st course of stone has been added from wall on Western side of [22]. The two primary structure walls are of double thickness. (ie: East wall of trench + West wall.)

Pottery is [22] (1)  
 " " [23] (1)

T.43. JN. Ahrop. 13/10/93. [25] (1)

- 1 - Gray c/w - probably located near amphora toe.
- 1 - Gray c/w - probable base of unfooted bowl.
- 2 - frags c/w - rims - Both with heavy external groove.

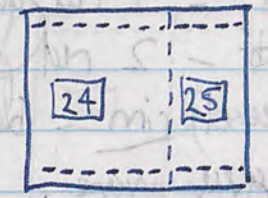
T.43. JN. Ahrop. 14/10/93. [27] (1)

- 1 - Small-med. bay c/w body sherds
- 2 - Etruscan bent rim fragments. c/w - 1 red dip / 1 black point (weak)
- 1 - fragment cooking ware body sherd with round hole. - c/w.
- 1 - Body sherd c/w - local green
- 1 - c/w handle fragment
- 1 - Unguentarium De Amphora frag. -
- 1 - Unfooted base frag cooking ware.
- 4 - c/w frags footed ring-base. - 1 drip ware.
- 4 - Rim frags 3 c/w - 1 (red point) medium ware. (1 coarseware frag probably near spout.
- 1 - large c/w rim frag - probable rim of amphora stand or mouth of large vessel.

T.43. JN. Ahrop. 12/10/93. [23] (1)

- 1 - large bay coarseware body sherds - large # of cooking ware fragments
- 3 footed ring base fragment. c/w.
- 1 - c/w handle fragment - curved.
- 1 - Brown glaze body sherd.
- 1 - Base fragment - Black foot point.
- 1 - Body sherd - red point / glaze.
- 1 - Fine ware spout - sherd.
- 1 - c/w body sherd with raised line on surface. - possibly located near rim/hip of vessel.

T.43. Gh. Ahrop. 13/10/93.



Concluded locus [24]. Photos taken area dusted. Focussed attention on locus [25]. Now down to depth of approx 2m. Workers going in shifts to attempt to complete. No special finds to date.

Pottery is [25] (1)  
 Pottery is ~~[25]~~ Bone is [25] (2)

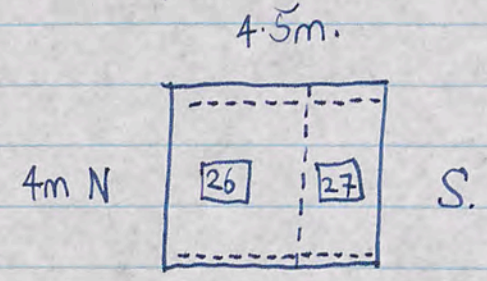
T43 Jh. Ahrop. 10/10/93. [7] (2) ND 24.7

- 1 - large bay c/w body sherds.
- 4 - Red glaze base fragments - 1 red glaze (remains c/w).
- 3 - Echinus band rim fragments - 2 red paint.
- 2 - fragments (probably some vessel) rim - black Attic fineware.
- 2 - Body fragments - greasy grey ware.
- 3 - Amphora like fragments - c/w.
- 4 - Mortarium rim fragments - c/w - 3 with red paint.
- 1 - c/w rim fragment large bowl.
- 2 - c/w handle fragments - 1 handle shaft + one with body sherd.
- 1 - tray c/w body sherd with interesting pattern. Ψ.
- 1 - Body sherd - c/w red paint exterior / interior.
- 3 - Plate rim fragments - 1 medium ware - red paint.
- 2 c/w - 1 wh orange paint.
- 1 - c/w rim fragment - probably cup or bowl. raised line on exterior.

T43. Jh. Ahrop. 12/10/93. [22] (1)

- 1 - Medium bay c/w body sherds.
- 6 - Echinus band rim fragments - c/w.
- 1 - Mortarium rim frag. c/w.
- 2 - Joining fragments c/w (Base frag + body sherd with raised vertical lines). 1 additional c/w frag with same pattern.
- 1 - c/w frag including leg handle.
- 8 - c/w ring base frags (shards).
- 1 - Cooking ware body sherd c/w.
- 1 - Red glaze frag (fine/red ware).
- 8 - Fish plate rim frags c/w - 1 Black paint (weak).
- 1 - Rim frag c/w red paint - (probable bowl) patterned (⊙⊙⊙ rim)
- 1 - Body sherd - medium ware - leading up to rim.
- 1 - Lip fragment of c/w vessel.
- 2 - Rim frags c/w.

T43. Jh. Ahrop. E 14/10/93.



Today conduded digging for the season. Walls exposed are indicated by dotted lines. The wall between locus [26] + [27] is obviously a secondary construction - built on soil not bedrock. Pottery is [27] (1). Appears that drainage ditch in bedrock runs along edge of E + West walls in locus [26].

14/11/23

Lab 20:  $\epsilon$ -N

by the definition



$N$

Let  $\epsilon > 0$  be given. We choose  $N$  such that  $\frac{1}{N} < \epsilon$ .  
 For  $n > N$ , we have  $\frac{1}{n} < \frac{1}{N} < \epsilon$ .  
 Therefore, for  $n > N$ ,  $|x_n - x| < \epsilon$ .  
 This shows that  $\lim_{n \rightarrow \infty} \frac{1}{n} = 0$ .