

Jebel Khalid
1993

جبل خالد
1993



T31/32

T38

T.42

R SNC
BAT

A4

NOTE BOOK

R Some T44 recopied No. 595

T39 P.15

T41 P.15

Coins: 1p, 3, 15, 17, 21, -3 and -5 (at least T44 on)
'93 Reported in Sibolle notes

Stamp
* P. 19 coin 93. 24. 1

Empty rectangular box with a horizontal line across the middle.



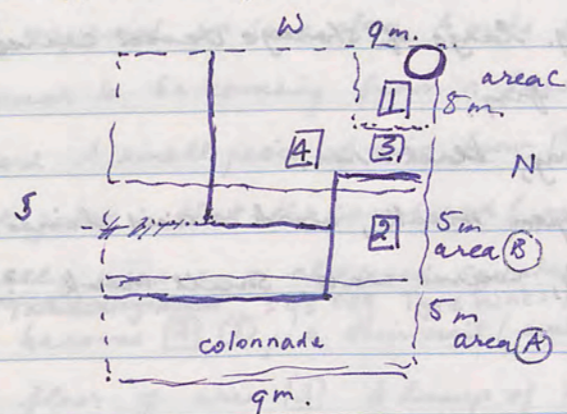
9 312828 005954

unguentarium

Tebel Khalid.

Sept. 7, 1993

Had 22 workers only. Clearing trenches around colonnade. Established long narrow square (T36) along north face(?) of the acropolis building (Ed Clarke + Hyde Smith). We will continue the 1991 trench of Tom Clarke + Jenny Anderson (T33 + 34) + try + make sense of the half-cleared trench. We will clear the grass + tumbled surface stone. The soil has hardened by rain + then sun so it is difficult to get a feel of the surfaces. 9m. across divided into 5m lengths of 3



We'll clear area A + the length of 5 inside the wall to the East.

At the Western North end high up where an amphora turned up last season an oven is now appearing. A statuette head (fem.) has turned up in the surface clearing of the trench near its centre as locus [1] object [2], a metal piece as [1] [3]. We are also clearing the oven which J + T revealed in the NE corner to try + get some notion of what occupation - from the looks of the pottery it would appear to be purely Hellenistic.

A Ramp in Area B would be [2] [4]. We are clearing what belows the floor in area [3] but the definition of levels is very difficult. I am totally perplexed. Oven is 570mm x 610m: circular. We will leave it pro temp. The pottery from locus [2] becomes [5], locus [3] [6] and from near the oven locus [1] [7]. There is a large bag of bone for the day Area [4] to the S of of [3] becomes bag [8]

NB in error I have called this trench T36 but have tried to correct all labels

31/2
T.36 8.9.93 [3] (14) Bag 2

- Small bag body shards 1 body frag black + red fine ware
- 1 body frag black glaze 1 round unfooted base: unglazed
- 3 " " s. cooking ware 1 strap hand
- 1 body frag. fine weak red 1 fish ware, red, body frag, grove.

31/2
AK T36 7.9.93 [1] (7)

- Small bag body frag including 1 body frag. large of storage vessel coarse
- 2 red glaze body frags. 1 plate, 1 round base frag.
- 1 coarse ware round base 1 body frag, black + red.
- 1 mortarium, coarse ware rim, large open mouth, weak incised lines.
- 1 small rim with complete lug handle, coarse ware, small mouth, ? juglet.

AK T31/32 9.9.93 [7] (6)

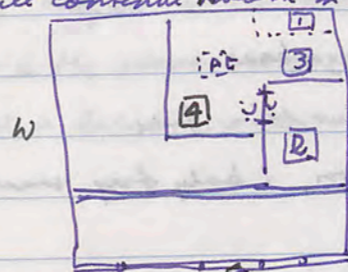
- middle size bag coarse ware body frag 1 mammery toe, coarse ware frag.
- 1 b-g. frag, incised line 2 joining frags. thick handle, round, coarse
- 4 body frags, r-ware frags. 1 black paint, fine, body frag.
- 1 brown body frag., plate? 1 complete lug handle, coarse ware,
- 1 frag. strap handle (coarse 1 rim frag, pie-crust decoration, wavy incised lines.
- 1 large rim, weak red paint, drip ware, small mouth.
- 1 foot red-ware plate, rouletting 5 rims, weak black, drip red
- 1 rim weak black ? fish plate 2 coarse ware bases, footed.

AK T31/32 9.9.93 [6] (5)

- bag coarse ware body frags, middle-sized
- 2 toes amples, small; 4 handles, 2 complete + weak red, 1 coarse ware frag.
- 3 coarse ware cooking frags + 1 cooking-ware rim 1 rim, large storage vessel v. coarse
- 1 weak red body frag. 3 coarse ware rims
- 3 footed bases, 1 fish plate (large) weak black 1 body frag., part incised lines weak black.
- Fine red glaze, 1 thick plate footed base, 1 fine bowl rim

Sept. 8, 1993

We will continue work in area 2 which seems to be within the house

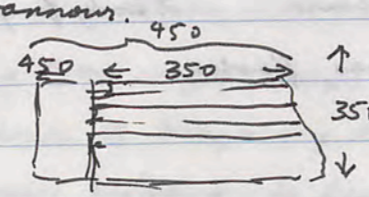


and makes sense of the flooring levels.

Area [3] is much more problematic - I'm beginning to feel it must be outside the house with very uncertain + unlevel floor heights.

A small metal piece from area [3] becomes [1]. It may be nothing but an object (metal) impressed on some clay. A piece of iron is [2] [4], + of brown glass [2] [8]. They appear to be coming from a floor level with a blocked door into the (?) courtyard. A small piece of iron from [3] is [4]. I continue to be very puzzled.

My best guess is that the courtyard (putative) with the rubbish pit was eventually used as a sheltered squatter occupation area, blocking off the doorway = ~~93.009~~ = 93.009 Tyre mint: Ant iii - Denab. ii
A coin becomes [2] [5], a thin nail (well preserved) [2] [6]. These are coming off the floor of area [2]. A lump of metal from same area [2] [7]. What appears to be a very beville/bevil, probably clear amber, is [2] [8], all coming off the floor. [2] [9] appears to be moulded glass. A glass fragment has come up in [3] where two large blocks appear to lie at a floor level at an angle. = [3] [10]. We appear to have found the end of the rubble wall to the West end with the tannour.



A moulded ? door piece with moulding has turned up in [3] [11] corner and 450 deep.

A further nail from [2] = [2] [11] (not complete), two pieces of glass [2] [12] - originally, brown but much opacified. There is a bag of bones from this area as well as a little charcoal + a very large bag of pottery [2] [13]. [1] [14] is perhaps a coin, [4] [15] is a glass fragment. We have cleared all of area [2] to floor level + photographed + are working now on area [4] quite unclear whether this is floor level or not. [3] [16] is pottery, 2 bags

(93.009)

NB In error I have called this trench T36 but have tried to correct all labels to T31/32

* 93.023 (Ant. iv 175-164)

J-K T31/32 [10] (8) bag 2

small bag body sherds

1 te, amphora, small . 1 weak red paint 1 red glaze base

1 body frag., weak red, fine . 1 weak black 1 echinus rim, fine

1 coarse ware, footed base 1 body frag weak brown, 1 body frag weak black

J-K T38 13/9/93 [1] (2)

Large collection body sherds

7 coarse ware rims 1 fine mouthed rim frag. 1 strap handle coarse ware

4 bases, 1 r-glaze 1 fish plate profile bagged as artefact

J-K T31/32 [10] (8) Bag 2. JK T31/32 12/9/93 [13] (4)

Bag (large) coarse ware. 1 strap handle coarse ware

2 coarse ware rims, 1 weak black rim, 2 coarse ware handle frags

5 frags fine black glaze 1 cooking ware body frag, 1 black paint body frag.

1 fish plate base, weak brown, 1 unfooted base 1 base frag grey + brown

T31/32 11.9.93 [15] (9)

4 amphora toes 5 frags, b+r fine ware 2 body frags + handle bases

3 fish plates, weak red. 4 bases, footed

19 rims, 6 echinus rims

T31/32 11.9.93 [9] (7)

1 amphora toe, coarse 1 fine ware red frag. 4 weak red body frags.

4 coarse ware rims 5 cooking ware body pot

T39 14.9.93 [1] (3)

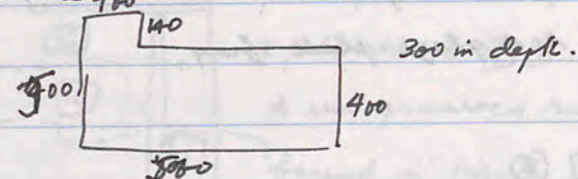
small bag body sherds 2 coarse ware rims, 1 coarse ware base fish plate

3 body frags / black, brown, pinkish

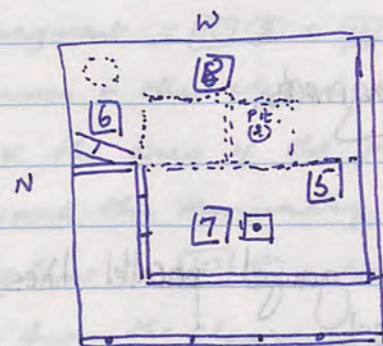
T31/32.

9/8/93

We are digging in the area of T28 going down a few cm as well as T31/32 in the west-north corner. From the western end we have removed a large worked stone 900



There are at least two floor levels in the western corner quite visible until we reach the bedrock. to which I will ultimately clear the entire area. We have removed several large worked stones including the doorway threshold piece revealed last season. A Nail has come up in the E sector. [5] (1), a glass fragment [5] (2).



NAIL
J.K. = [unclear]

I will call the levels today [6] → [8] as marked. We are basically clearing the trench. The two blocks side by side in area [6] may be on bedrock. 2 nails from [6] is (2), a loom weight (clay), fragment, is [6] (3). It is very clear now that we have a series of temporary rubble walls built into + against the walls of the main building. So far as I can see the pottery is all Hellenistic. We are cutting through the two distinct floor levels to bedrock in area [6]. The architect will draw the temp. walls before destruction. It is slow going. A well-preserved ring (metal) has come up in [8] as (4). A large roof tile frags from [8]. Altogether we appear to have definitely rough rubble walls + domestic occupation outside the main building - as there is no indication we are inside the structure. There will be a bag of charcoal + a bag of bone as well as several bags of pottery [6] (5), [7] (6), [8] (7).

T 38 14.9.93 [2] (4)

- lots of v. coarse ware pottery 1 rounded coarse ware base
- 1 double handle 1 coarse ware rim 1 footed coarse ware base
- 1 strap handle, 1 piece amphora toe 1 fish-plate base
- 1 small handle 1 red glaze plate frag.

T 38 14.9.93 [2] (3)

- lots of v. coarse ware pottery 1 twisted rope handle frag
- 2 fish plate 1 small footed base, coarse ware 1 coarse thick rim frag.
- 3 rim frags 2 frags. footed bases

T 38 15.9.93 [4] (5)

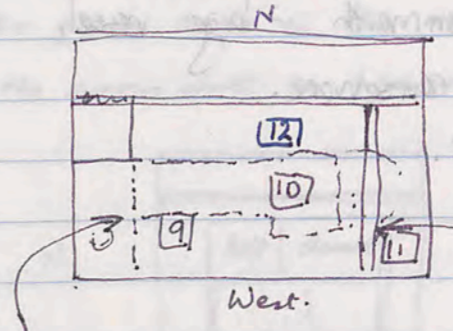
- large bag of coarseware body fragments.
- 2 amphora toes 1 sm. 1 lge.
- 2 strap handles - coarse ware
- Fabrics - 2 fab. of light red ware ganged parallel lines.
 - 1 cooking ware body sherd.
 - 1 hard fired burnished grey ware body frag
- Rims - 1 echinus bowl rim.
 - 8 rims coarseware small dishes.
 - 1 cup/bowl - fine/malized.
 - 2 frags outturned open mouthed large vessel.
- Bases - 1 fish plate profile. - light red ware.
- Footed Bases: 6 coarseware footed base frags.
 - 1 footed base - fine red glaze plate.

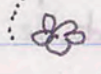
T 38 15.9.93 [4] (6) - Bag 1.

- Fab Middle sized bag of coarseware body sherds.
- Fabrics - 4 red glaze body frags. - 1 with parallel incised lines.
 - (fine = coarseware) 1 c/ware body frag, ganged wavy line.
 - 1 c/ware body frag - amphora?
- Bases - 4 coarseware base frags, small vessels.
 - 1 Base frag footed red glaze rouletting in interior
 - 1 near-brown paint - large body frag - wide open vessel.

J-K AK T31/32 11/9/93

We are continuing clearing to bedrock in various areas of the trench



A moulded piece of pottery with beaded decoration + palmette is [9] (1) 

A well preserved ring becomes [11] (2) found in trench cleaning at foot of wall

What has emerged as we cleared to bedrock is the foundation of ^{wall} room over which the shanty occupation had been laid. It now means that we are likely to be inside the room. A ring has come up from [10] close to bedrock + a metal fragment = [10] (3) + [10] (4). We are leaving some of the floors in the NW corner + then clearing the foundation stones. We have cleared to bedrock in the area of the 'pit' + will clear out half the area to its east, beyond the temporary wall. Two floors are distinctly apparent. A piece of glass is [10] (5). Nails from [9] & [10] make bag (6). There will be pottery from the clearance of [9] which will be from the lower levels cleared to bedrock (7). [10] (8) will be pottery from near the pit, again cleared to bedrock. [11] (9) will be further pottery, again cleared to bedrock. We are just starting to clear half of [12]. There is a fair size bag of bones. There is a bag from the pit area which I'll call [10] (5) bag (2). We hope to finish the trench to-morrow + photo.

T 38. contd. 15/9/93. [4] [6] Bag 1.

- 1 coarseware rim, pre-cast decoration on exterior.
- 1 large coarseware frag, small open mouth - large vessel.
- 9 - rims - open mouthed vessels - coarseware.
- 3 - frags double handles - coarseware.

T 31/32 9/8/93. [8] [7]

- 1 Bag of coarseware body sherds.
- 1 Small amphora toe.
- 4 Coarseware strap-handle frags
- 1 Dbt strap coarseware handle frag.
- 3 Body frags fine red glaze.
- 2 Coarseware cooking frags.
- 6 near red frags - body sherds.
- 1 Body sherd - brown painted line with parallel grooves.

Base:

- 2 Coarseware fishplate bases.
- 6 footed coarseware base fragments. - 1 with splotchy red paint.
- 1 Red glaze footed base frag.
- 1 Coarseware cooking fabric fish plate.
- 1 echinus near red rim.
- 3 frags fine reddish brown small cups/bowls.
- 1 Similar with gurgled lines on exterior.
- 6 Coarseware rim fragments.
- 1 Advanced rim (new) pinkish fabric - near red paint.
- 1 rim fragment wide open vessel. Dark/brown weak paint. - deep groove interior of rim.

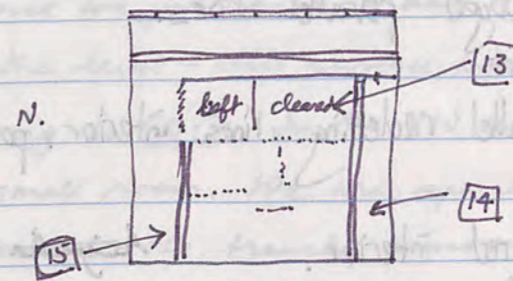
T 38 15. 9. 93

6 Poulders, 1 of which is basalt

T 31/32.

12/9/93

Clearing the east area of the trench to bedrock in half the area leaving the floor area in the other half. We're also clearing to the S. of the room wall to bedrock.



A well-preserved metal knife has emerged in [13] ①: [15] ② are fragments of glass: [13] ③ is a metal frag. [13] ④ is pottery below the floor in the clearance of the half trench. [15] ⑤ is b-glaze palmette + rouletting frags from foundation levels. [14] ⑥ is metal pin from foundation clearance, [14] ⑦ a stone loom weight, [14] ⑧ is metal clamp with stone. [15] ⑨ is pottery from the foundation level in the NW corner, [14] ⑩ is a glass frag (double incised lines) from the foundation clearance.

We have effectively cleared the trench & are moving west to complete the room & get the west front of the building. [14] ⑪ is pottery from the final clearance.

The outcome is clear: the house room continues to the west and there have been at least two floors laid within it, the higher of which appears associated with the later occupation and the lower level may well be the original floor but has been cut through at various points for the purposes of the secondary occupation.

We are now moving westwards to get the outer measurements of the house.

T31/32 11/9/93 [10] (8)

- 1 Small bay body sherds coarse ware.
- 1 Cooking ware rounded base.
- 2 Coarse ware body frags - gauged parallel lines.
- 1 fish plate base - weak red paint.
- 1 Red glaze rounded base - parallel rouletting lines interior, parallel gauged lines exterior.
- 2 Echinus bowl rims. - weak red interior. *Arizadeh Mahmood.*
- 2 Coarse ware everted rim frags.
- 4 Coarse ware base frags footed. - 2 with weak red paint.

T31/32. 8/9/93. [2] (13)

- 1 large bay body ware - coarse ware.
- 1 Coarse ware amphora toe complete.
- 1 Small amphora toe fragment - brown fragment.
- 1 Small unfooted base. - weak red interior.
- 1 Footed red glaze base - 5 rouletting lines interior.
- 1 large base coarse ware footed - large vessel - pinkish fabric greenish exterior.
- 3 body fragments fine red glaze.
- 2 Echinus rims - red drip painter.
- 5 Coarse ware rims? fish plates.
- 1 Coarse ware rim - cooking fabric - base of handle.
- 5 Coarse ware assorted rims.
- 1 Coarse ware rim with base of double-strap handle.
- 1 Coarse ware open mouth rim frag. pinkish fabric (1 similar vessel).
- 1 Coarse ware rim weak black/brown paint.
- 1 very coarse ware simple rim fragment - large open? basin.

T.38.

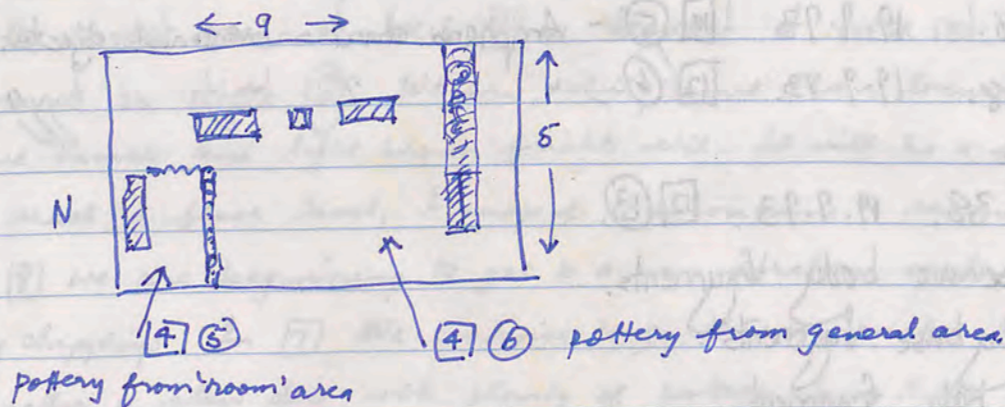
13/9/93

4.5 m x 9 m. T.38 directly to west of T.31/28, which has now been completed. We are clearing off the surface soil of the whole trench, which is only surface dust. A head from the NW corner is

[1] (1). Otherwise we just have a bag of indifferent pottery = [1] (2)

14/9/93 We'll make the level - still surface topsoil [2], a lamp frag. being [1] (1) a figurine frag. is [2] (2). In the NW corner it looks as if a pit is emerging or a small room. We are spending the day going through 10 cm. runs through the trench, removing tumble stones, and clearing more surface soil. We are beginning to get below the tumble & get more definition but it is all still pretty unclear. The pottery from the putative pit or small room I'll bag separately as [2] (3), pottery from the rest of the trench as [2] (4).

15/9/93. To-day will be levels [3] as we go over the trench once more in 10 cm sweeps. It looks as if the back wall of the room may be emerging with worked stone. [3] (1) is a nail head, small metal frags. is [3] (2). The wall is emerging clearly in the S of the trench & in the NW corner there appears to be a small room - but it may be deceptive. [3] (3) glass frags. from this level, [3] (4) is a piece of metal (hanger? or nail?). A large block has come up on the NW wall close to the corner but it may well not be in situ.



J-K T. 38 16.9.93 [6] [4]

- Small body sherd collection
- 1 fish plate, coarse ware, base
- 1 rim frag., " " , outturned. }

J-K Ahrop. T. 38. 19.9.93. [12] [13] Bag 2.

- 1 Medium sized body sherd collection.
- 3 body sherds - same vessel. splotchy red paint.
- 11 Courseware rims.
- 2 Courseware ring bases.

J-K Ahrop. T. 38. 19.9.93. [10] [11]

- 1 Medium bag body sherds.
- 3 Echinus bowl rims.
- 1 Fine red-glaze cup rim
- 1 Fish plate fragment - unfooted base.
- 1 weak red glaze ring base fragment.
- 4 rim fragments - 1 weak black paint - 1 Orange/red.
- 1 Unfooted base fragment - red glaze.
- 1 Body sherd weak red paint.

J-K Ahrop. T. 38. 19.9.93. [12] [5] - Amphora stand - inventoried objects.

J-K Ahrop. T. 38. 19.9.93. [12] [6] - " " " " "

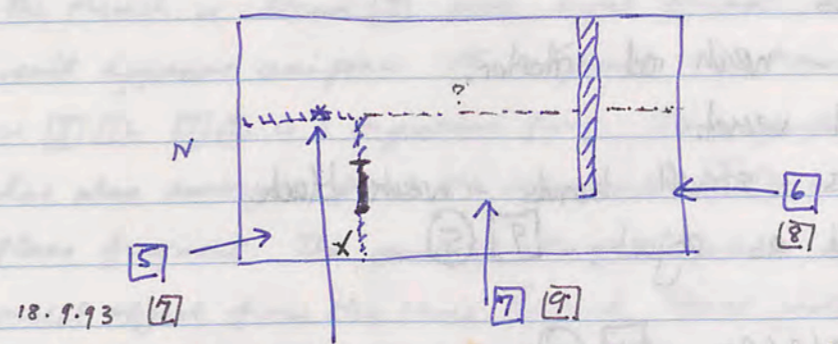
J-K Ahrop. T. 38. 19.9.93. [12] [13]

- Small bag courseware body fragments.
- 3 Courseware ring base fragments.
- 1 Weak red paint body fragment.
- 2 Courseware rims
- 1 Echinus bowl rim fragment - weak black paint.
- 1 Fragment body sherd cooking ware.
- 2 Finish courseware body fragments.
- 1 Body fragment. Small vessel - weak black paint.

T 38

16/9/93.

This will have various loci to-day.



In [5] in the east wall of the small(?) room a frag. of a basalt grinding basin was recovered (piggy-footed - one foot); this will be bagged as [5] [4]. A stone basin has also emerged associated with the basalt frag. hard against the N/S wall that appears to be coming up. A lamp base from the E bank (mid-trench) is [7] [2]. Pottery from [5] is bag [3], [5] [4], [7] [5]

18/1/93

I shall work to-day in the three areas. It looks as if a N-S wall will emerge across the trench. We will call the area protected by the rubble wall + (?) blocked doorway area [7]. It looks as if there was a slight floor we must have gone through built over a very rubble-packed level devoid of artefactual material. [9] [1] are glass frag.

In the s-west corner of locus [7] a fragment of weak red Megarian bowl is bagged as object [2]. We are still, apart from locus [7], cutting through stone rubble and light brown friable soil. It will be a few days until we reach a floor level, I suspect. We continue to remove topsoil + stones. In [8] we are beginning to get to a new stratum of limestone spoil + tiny chippings. In [7] we continue to go through packed limestone chips. Altogether a slow day with plenty of pottery but little else.

- Pottery from [7] will be [3] plus a lone bag.
- from [8] " " [4]
- from [9] " " [5]

from [7] a fine glass rim will be [6], bead is [9] [7]

AKrop. J.V. T38. 18.9.93. [9] (5)

- 1 Tiny bay body sherds.
- 1 Fish plate base fragment - weak red interior.
- 1 Base very small footed vessel.
- 2 Echinus rim fragments - small bowls - weak black.
- 1 lamp fragment - bagged as object. - [9] (5)

JK. Ahrop. T38. 19/9/93. [11] (12)

- 1 large bay courseware body sherds.
- 2 Amphora ties.
2. Courseware strap handle.
- 1 Courseware round handle with body sherd.
- 3 Body frags. weak black paint. - 1 with 2 external lines.
- 2 Body frags with incised lines - courseware.
- 2 Weak red paint body fragments.
- 11 Courseware rim fragments.
- 1 Rim frag fine burnt. 2 lines incised exterior. weak brown interior.
- 1 Ring base fish plate - black exterior
- 1 Unfooted base - weak orange paint.
- 5 Ring base courseware base fragments.
- 1 ~~Unfooted~~ courseware out-turned footed base fragment.

JK. Ahrop. 7/9/93 T31/32. [2] (5)

- 1 Med. size bay courseware body sherds - incl. frags with pitched interiors + cooling fragments.
- 2 Courseware rim fragments
- 1 Brickly-red body sherd - close to rim.
- 1 Courseware base (ring) fragment.
- 1 Fine red glaze rim fragment plate.

JK. Ahrop. T38. 16.9.93. [7] (5)

- 1 Medium sized bay pottery sherds.
- 3 Body sherds - fine red glaze. 1 Flat plate / 1 tie cup or bowl.

T.39

16/9/93

We are removing loose stones, checking for any worked signs. The trench is locus [3] with light friable wind-blown dust. The soil appears uniform throughout the trench. A metal fragment (nail?) is [3] (1). [3] (2) is a figurine frag. Some guttae + cornice moulding has also emerged, from the colonnade. [3] (3) is metal clamping, [3] (4) is glass fragment. The soil at all of the same consistency. [3] (5) is a metal object from the same locus. There will be two bags for the day of pottery, [3] (6) bags 1 + 2

T39

20/9/93

Clearing at floor level in East end of trench. A lion-headed spout has come up in the bank as well as a coin * [6] (1) with clear SC on one side (? Republican? Roman). We will clear the trench + photograph before completion. The coin was found outside the stylobate, within the courtyard, in the shallow fill before the floor. [6] (2) pottery. Photographed + drawn.

T.40

20.9.93.

Dredging to-day the first 10cm. of topsoil. Locus [1]. We expect to find the back wall of the colonnade. [1] (2) is Pottery.

T.41

26.9.93.

Clearing next 10cm. across trench - slowly. I'll call to-day's level locus [5]. A wall is emerging EW, + we presume NS on the E side of the trench. [5] (1) is some lead frag: no doubt from clamping [5] (2) pottery.

* Nerwa 96-98 inv. 93. 212

JN Ahrop T38. 16.9.93 [7] [5]

- 1 Amphora toe
- 4 Carseware rim fragments - 2 mortarium / 3 fish plate.
- 2 Carseware base fragments.
- 4 Carseware handle fragments - 1 Double handle strap.
- 1 Carseware body sherd - shoulder/neck.
- 1 Carseware body sherd - double incised lines

JN / Ahrop. T38. 18.9.93. [7] [3]

- 1 Small sized carseware body sherd bag.
- 4 Echinus bowl rims
- 2 Carseware base fragments - footed. 1 Orange fabric interior
- 1 Carseware footed base frag. weak red exterior / orange interior.
- 2 Body sherds - rusty brown exterior.
- 5 Body sherds - weak black paint. 1 Body sherd pitched interior.

JN. Ahrop. T31/32. 11/9/93. [11] [9]

- 1 Small bag carseware body sherds.
- 1 Fish plate base frag + rim frag.
- Carseware - 2 base frag - 1 rim frag. fishplate.
- 1 Red glaze plate base + rim fragment.
- 1 Outturned footed base fragment - weak red glaze.
- 1 Cooking ware body sherd.
- 1 Carseware rim fragment.
- 1 Very large body frag large vessel - including base of strap handle. Double incised lines on exterior. - with associated body sherds.

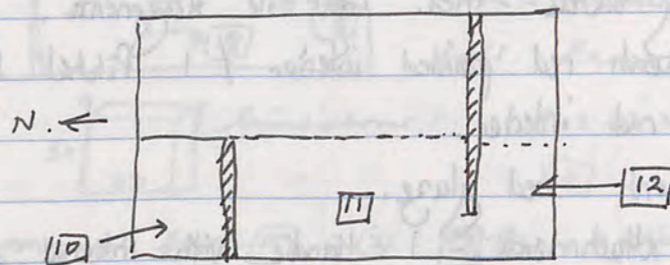
JN. / Ahrop. T31/32. 7/9/93. [4] [8]

- 1. Medium sized bag of carseware body frags.
- 1. weak red paint rim fragment - fine cup or bowl.
- 4. Rim fragments - fish plate.
- 1 Handle fragment.
- 2 Carseware rim fragments - 1 with pie crust decoration.
- 1 Cooking ware body sherd.

T38

19/9/93

We are now going down through a lighter - coloured limestone level with less tumble to remove. We are now at original wall level in the NW sector but not yet at the floor.



From [10] has come up ①, a coin well down by 2 meters in the trench at the level of the first course (top) of the original wall. [11] ② is a frag. of glass. The NS wall is beginning to appear fortuitous (I think). Well down against the wall in [11] - north wall - a well preserved coin has come up: [11] ③*. [12] ④ is a metal lump. In [10] we have reached bedrock without any obvious floor-level being reached. Are we outside?? There is little to do but remove a large amount of topsoil fill. In [12] a well-preserved amphora stand ⑤, [12] ⑥ is a large rim frag. of water jar (wavy lines + pie-crust decoration), [11] ⑦ is a coin^o (well preserved) from mid [11] against west bank.

Found fragment of Megarian bowl. Mid locus [12] ⑧. Also nail found in same locus. - 3 fragments. [12] ⑨.

[10] ⑩ - is a small fragment black plaster found mid locus.

Pottery from [10] is [11]

" " [11] is [12]

" " [12] is [13] which may have frags of large water pot + amphora stand.

+ inv. 93.171 Ant. iii??

* inv. 93.166 Arcadius (395-408)

o inv. 93.167 ? Alex ii Zebina

Jk/Athrop. T31/32 7/9/93. [4] [8]

2 Based fragments - footed vessels - red glaze - 1 with rickling in interior.

Jk/Athrop. T31/32. 8/9/93. [3] [16]

1 large bag of coarseware body sherds - incl. roof-tile fragments.
4 Base fragments - footed 1 weak red painted interior / 1 Pitched black interior.

1 Round base fragment - weak red interior.

1 Out-turned footed base fragment - red glaze.

3 Body fragments with handle attachments - 1 handle with internal groove.

1 Strap handle fragment.

1 Rope handle fragment - weak red.

2 Echinus bowl rim fragment - 1 weak red. / 1 orange/brown.

4 Coarseware rim fragments - small vessels.

1 Rim fragment - weak red paint.

1 Rim fragment - weak red paint with mending hole.

1 Rim fragment - weak black.

3 Body sherds gauged - parallel lines. 1 course / 1 black / 1 weak red.

1 Coarseware body sherd wavy incised lines.

1 Cooking ware body fragment.

1 Body sherd - weak red interior - greenish exterior.

1 Rim fragment - fine bowl - weak black.

1 Rim fragment - weak red paint.

Jk/Athrop. T31/32. 12/9/93. [14] [11]

1 Small bag of coarseware body fragments.

4 Fishplate rim fragments - coarseware.

2 Coarseware rim fragments - joining.

1 Rim fragment - red glaze - very fine. cup/bowl.

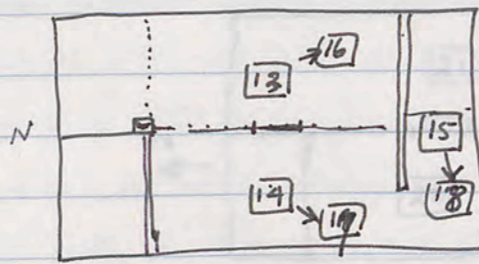
1 Coarseware base fragment fishplate.

2 Cooking ware body sherds.

1 Body sherd - brick red exterior.

7.38

20.9.93



block of limestone. 56 x 63 x 20 (incomplete) removed from [14]

A clay loomweight from [15] is [2]. [13] [3] is a nail. A pounder (well bruised) has come up also in [15]. We are at an ashy layer in [13] near the E. bank & should reach the floor soon. But in [14] we don't seem to be reaching any obvious floor but perhaps levelled bedrock.

[13] [4] is pottery. [14] [6] is pottery. [15] [5] is pottery.

21.9.93

We are excavating in the same loci as yesterday, which will be [16], [17] & [18] respectively. In [16] the wall is emerging clearly N→S and in [18] there is also a N→S wall. We should reach the floor in [16] to-day. In [17] we don't seem to be encountering anything but tumble, likewise in the west area of [18] we have only bedrock.

[18] [1] is amphora stand frags, [17] [2] is nail fragment. The basic shape of the rooms are now coming out clearly. [17] [3] is glass frag. [17] [3] coin* [17] [4] figurine head. We have [16] [5], [17] [6], [18] [7] as pottery & a bag of bone. A doorway has emerged in mid-trench with a clear threshold.

inv. 93.241 = Demetrius I

21/9/93

JK. / Ahrop. T38. 15/9/93. 4 6

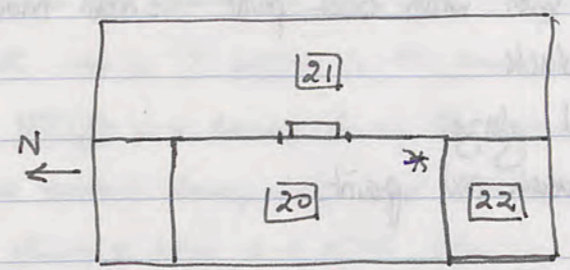
- 1 Medium sized bag courseware body sherds.
- 5 Courseware base fragments - footed vessels.
- 2 Handle fragments - 1 double strap.
- 3 Courseware rim fragments.
- 1 Weah orange fabric rim fragment with mend hole.

JK Ahrop. T31/32 7/9/93. 3 6

- 1 Small bag - courseware body sherds.
- 3 fragments cooking ware including 1 large strap handle - complete.
- 1 Ring base fragment - courseware.
- 3 Handle fragments - 1 including rim - courseware.
- 4 Tripplate rim fragments
- 2 Echinus bowl rim fragments joining.
- 1 Large mortarium rim fragment.
- 3 Rim fragments small vessels - 1 weah red/black.
- 1 Body sherd - weah black drip painter.

JK. / Ahrop. T38. 16/9/93. 5 3

- 1 large bag body sherds - courseware.
- 1 Finish fabric body sherd with handle base.
- 1 Strap handle fragment.
- 1 Round handle fragment.
- 2 Fragments weah-red paint exterior. Round base fragments.
- 1 Dish plate base fragment.
- 1 Footed base fragment drip painter
- 1 Round base - base fragment - double groove interior.
- 7 Courseware base fragments some with weah red/black paint.
- 1 Very large pithos rim fragment.
- 1 Rim fragment with base of handle + navy gauge line.
- 3 Fine brown slip rim fragments - joining.
- 5 Echinus bowl rim fragments - 3 weah red paint
- 5 Fragments (rim) same vessel - weah red paint - grooved on interior lip.



We are clearing [21] to the higher floor level. [22] has revealed the house wall in the baulk + will be cleared to-day. [20] continues to puzzle with no obvious floor level + tumble going down, it would appear, to bedrock. [22] 1 is metal piece. A basalt loom-weight

Byz (half circle survives) has also come up in [22]. [20] 2 is coin from the inv. 93.264 Constans II 641-652. [20] 3 are nail frags? [20] 4 glass frag. [20] 5 is metal pin; also [20] 6 - long piece of pin or probe, [20] 7 metal tube?

In [22] we have reached the third course of dressed stone + are cutting through limestone chipping fill - very solid - to bedrock. In [20] we appear to have a floor of quarried bedrock. In [21] we have cleared to the latest floor level at this stage.

Pottery from [20] is 8, from [21] is 9, from [22] is 10. A small bag of bone.

23/9/93

We have nearly completed [21] at the S. end, + continue work on [20] + [22]. A nail from [20] is 1, a spear-head is [20] 2, [20] 3 a small stone spindle wheel, [20] 4 is a sword hilt found in the fill of the same SE corner of [20] marked *, still some way off the jebel floor. [20] 5 is pottery. Stopped early for K.-Khalid wedding

25/9/93

We'll continue in [20] + [22]. [22] is nothing but limestone chipping - we should reach bedrock to-day. In [20] we are clearing away towards the NS wall. There do not appear to be any steps. [20] 6 is glass rim + frag. [20] 7 a clay loom-weight coming off the floor level. There may be a ramp rising to where the block doorway in the other side in [20]. No artefactual material in [22]. A sword blade is found on spot marked * close to where [20] 4 was found: [20] 8. [20] 9 is pin

- JK. Ahrop. T38. 16/9/93. [5] (3)
- 8 Courseware rim fragments - 1 with weak black paint - small mouthed bottle.
 - 3 Small rim fragments - 2 black
 - 1 Fine body fragment - weak red glaze.
 - 1 Rim fragment - weak bowl weak red paint.

- JK. Ahrop. 20/9/93 [13] (4)
- 1 Small bag with courseware body sherds.
 - 1 Vaguetarium spat - orange fabric.
 - 1 Fishplate base fragment.
 - 2 Courseware footed base fragments
 - 1 Base fragment out turned foot - without weak red paint.
 - 1 Courseware body fragment with lug handle.
 - 1 Fragment strap handle courseware
 - 3 Fishplate rim fragments
 - 2 Body frags fine red glaze.
 - 2 Courseware rim fragment.
 - 1 Cookingware rim fragment.

- T41 JK. Ahrop. 20/9/93. [1] (1)
- 1 Small bag courseware body frags.
 - 1 Courseware footed base frag.
 - 2 Courseware rim frags - 1 fishplate.
 - 1 Out turned courseware rim frag.
 - 1 Courseware body frag - decorated with connected circles on exterior.

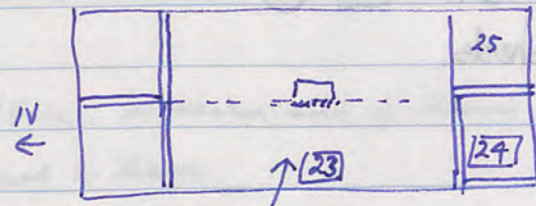
- T38. JK. Ahrop. 21.9.93. [17] (6)
- 1 Largeish bag courseware body fragments.
 - 5 Body frags fine red glaze
 - 1 Amphora etc.
 - 1 Strap handle fragment with associated rim.
 - 1 " " + rim frag. courseware.
 - 1 Very courseware narrow-mouthed ring fragment - very poorly made
 - 4 Courseware ring base fragments.

cont'd 25/9/93

We should clear [21] fully to bedrock, + get a good way along the bedrock of [20]. As in T. 28/31 to the east no obvious original floor outside is coming up. [20] (10) is a lamp from the same floor corner as the sword + hilt: a simple round lamp with leaf? decoration on shoulder. Pottery will be [20] (11) with plenty of bone + a little charcoal. [20] (12) nails.

T. 38

26.9.93.



We are clearing [23] - a metal? pin becomes [23] (1). We are tidying up the bedrock of [24] + then moving to [25]. [23] (2) is a clay loom weight. It appears from the clearing of the NS wall (weak rubble) that the west side of the trench was not re-occupied - so far as the blocked doorway + lack of steps suggests - at its latest phase. [23] (3) Nail frag. A floor level is emerging in the SE corner of [23] with fragments of a large pithos vessel. [24] is now cleared to bedrock with three courses surviving in quite a narrow room: no obvious floor encountered again - it looks as if the bedrock served as floor. A great deal of limestone fill does, however, suggest a floor should have been above this stratum - but nothing is visible in the bank. The floor in [23] appears to be a few cm. of very hard packed clayey soil immediately above levelled bedrock: It is very hard. Metal probe? is [23] (4), 3 metal studs in [23] (5) [23] (6) is pottery including pithos pieces.

27.9.93

Basically clearing the SW corner of [23] + tidying up + photographing to-day. We have had to lower several large worked stones into the trench. 110 x 36 x 50 : 70 x 58 x 30 : 83 x 32 x 96

73 x 57 x 27: have been measured, complete. [23] (7) is a clay loom weight, [23] (8) figurine frag., [23] (9) frag. of ring (metal). We are also working in [25] which to judge from previous adjacent trench should go down to bedrock. A facing(?) block (or paving) has come up in [25] measuring 11 x 30 x 40. [23] (10) is a knife blade, [23] (11) is a solid metal? piece.

T. 36 JK Ahrop. 21/9/93. [17] (6)

- 1 Fishplate base fragment.
- 4 Fishplate rim frags.
- 1 Cooking ware rim fragment.
- 1 Echinus band rim frag.
- 5 Coarseware rim fragments.

T. 38. Akrop. JK. 21/9/93. [16] (5)

- 1 large bag coarseware body sherds.
- 4 Body sherds - red glaze.
- 1 Body sherd cooking ware.
- 2 Body sherds - brick red fabric.
- 1 Base frag (ring) opalized Parthian ware - greenish.
- 6 Coarseware footed base fragments.
- 1 Body frag - gazed exterior - whitish fabric.
- 9 Coarseware rim fragments.
- 2 Echinus band - rim fragments.
- 1 Mestarium rim fragment - pitted diam line interior.
- 1 Coarseware rim fragment - wavy line on exterior shoulder.
- 1 Fishplate rim frag - blackened.
- 2 Small vessel rim fragments.

T. 38. JK Ahrop. 21/9/93. [18] (7)

- 1 Small bag coarseware body sherds.
- 1 Co red glaze body frag.
- 1 Red glaze rim frag - fine band.
- 5 Coarseware rim fragments.
- 1 Base frag - weak foot. - shallow footed.
- 1 Ring base fragment - (complete) - orange/red fabric.
- 1 Coarseware rim fragment.

T. 38. JK. Ahrop. 20/9/93 [15] (5)

- 1 large bag coarseware body sherds incl. 'pithoi' body fragments.
- 6 Ring base fragments - coarseware

Draft of fortnightly report.

T. 31/32. Secondary occupation over ruins. Two floor levels. Trench a series of small rooms within larger room.

✓ T. 36. External wall: Foundation. 9 courses stone. 3 1/2 m. Corner of NE.

T. 40 clearance: floor: wall. N. frontage.

✓ 5 pounds: coarse ware: food preparation area.

T. 38: BAT/GWC. Western end of house. secondary occupation. Some external to house.

T. 37. Outside area: internal room(s). Several in course of being revealed. Heavy pottery yield esp. fish plates.

✓ T. 39 Stylobate + T. 41. Guttas, cornice moulding & lion-headed apout. Fluting.

✓ T. 40 floor: N. frontage blocks as well as E wall. Rusticated.

Trench to West to complete architectural recovery (T. 45)

• T. 41 completed + T. 42 (GWC): external to house.

✓ T. 38 completed: large room.

✓ T. 37 continued. External SW quadrant. } cleared to bedrock/floor.
 Internal NW " }
 SE quadrant being cleared to floor.

✓ T. 43 started: to S of T. 38.

• T. 44 " to S of courtyard.

T38. JK Ahrop. 20/9/93 [15] (5)

- 1 Echinus bowl rim fragment.
- 1 Fish plate rim fragment.
- 1 Carseware rim " - large vessel.
- 1 Rim frag. with red/black paint with handle base.
- 1 Fine red glaze body sherd.
- 1 Small black glaze body sherd - fine fabric.
- 3 Body sherds carseware with weak red paint interior.

T38. JK. Ahrop. 20/9/93 [14] (6)

- 1 large bag carseware body sherds.
- 2 Amphora ties.
- 3 Fish plate rim fragments.
- 1 Twisted-rope handle frag.
- 7. Carseware base fragments - footed.
- 1 Body frag cooking-ware.
- 3 Weak red glaze body fragments.
- 1 Rim fragment - fine red glaze.
- 2 Carseware rims - external - incised lines. (rim).
- 1 Body frag. - 'oryballos' (?) Double incised line exterior.

T38. JK Ahrop. 22/9/93 [22] (10)

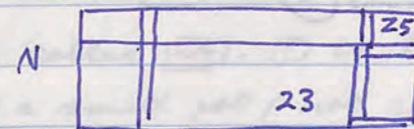
- 1 Small bag of carseware body sherds
- 1 fine black glaze rim with double incised line on exterior.
- 3 Carseware rim base frag. - small vessels, 1 fishplate.
- 1 Fishplate base frag.
- 2 Fishplate rim fragments.
- 1 Carseware rim fragment.
- 1 Strap handle fragment.
- 1 Carseware body frag - parallel incised lines.

T38. JK. Ahrop. 22/9/93. [20] (8)

- 1 Medium size bag carseware pottery
- 4 fragments of amphora stand - undecorated

T.38 Cont'd.

27.9.93



[23] (12) is a metal piece
We have moved from

[25] a large stone: 64 x 60 (incomplete) x 34.

with a smaller one with a worked groove: (incomplete) 40 x 18.5 x 17.

groove at longest 12 x 5 cm wide. [23] (13) is a pin-head ∇ off the floor, [23] (14) is glass frag. A number of pieces of worked basalt + pounders have also come up in the SW corner at floor level.

There is a very large collection of roof-tiles. And the west wall is emerging in the bank! [23] (15) is pottery, plus [23] (16) bags + 2 pottery. [23] (17) is metal ring (or small bangle). [25] (18) figurine frag.

28.9.93

[25] (19) is metal object (?copper) from the floor. [25] (20) is a semi-circular metal disc. We are clearing the foundation trench on the west wall and the area of [25] which had a great deal of tumble.

[23] (21) is a bag of nail fragments. The NS wall was built up onto the bedrock but is clearly secondary. Pottery from [23] is [23] (22), [23] (24) is a bead. [25] (25) is pottery

Conclusion: The combination of T.28/T.31/T.32 + T.38 has revealed one very large original room: 16m x 6m. approx which has been severely robbed. A great deal of bedrock was quarried out originally. So far as we could tell the original floor has disappeared - perhaps surviving in the NE quadrant - and even the earliest of the later floors lies across the foundation blocks of the original walls. A whole series of weak rubble walls, several floor levels + a tannor on the latest level are all due to later occupation of the eastern 2/3 of the room. The western 1/3 was blocked off by a cross NS wall + not reused. By that stage the cross-wall had to be founded on bedrock, the floor having disappeared. Despite the presence of pounders and basalt pieces a precise function cannot be determined - many could belong to later domestic use. The room was entered by a (blocked) doorway on the N.

T.38. JK. Ahrop 22/9/93 [20] (8)

- 2 Carseware cooking fragments.
- 3 Red glaze fragments
- 1 Urn fragment
- 7 Carseware ring base fragments - 1 with fish plate rim
- 1 Red glaze ring base, outward fragment.
- 4 Fishplate rim fragments.
- 2 joining pieces with red glaze rim fragments - fine fabric.
- 1 Rim fragment fine cup - red paint.
- 2 Carseware rim fragments, 1 echinus.
- 2 Carseware frags. body close to rim - with black glaze.
- 1 Body sherd - red glaze.
- 1 Small rim fragment - red and black.
- 1 Carseware stopper.

T.38. JK. Ahrop. 22/9/93. [22] (10)

- 1 Very large bay carseware body sherd.
- 1 Amphora toe small.
- 1 Beak handle fragment.
- 1 Large body sherd with base of handle.
- 10 Carseware footed base fragments.
- 1 Round base from carseware.
- 1 Flat base fragment - red glaze.
- 1 Rim fragment with complete handle - attached to rim + shoulder.
- 6 Carseware rim fragments.
- 2 Fishplate rim fragments.
- 2 Amphora stand rim fragments.
- 1 Fine red glaze rim fragment with merid hole.
- 1 Echinus rim fragment with red point.
- 3 Red glaze frags - 2 from flat plate - 1 round
- 5 Carseware cooking fragments
- 1 Black paint rim fragment.
- 1 Metallic grey body sherd.

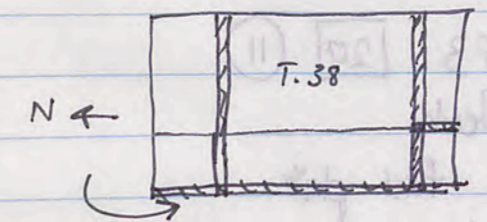
AK J.K T.38 in locus [23] we are going down to floor level T.38

29.9.93 will be called [24]. (1) is bagged a small amphora stand and a profile of a small pot (not complete). [24] (2) bagged as 4 frags including full base of green 'Pasture'. [24] (3) pottery for the rest of the day.

30.9.93 we continue to floor level + should clear to bedrock before the end of the morning (short)

7.10.93

In the NW corner of the trench the bank was cut into to reveal continuation of the NS western wall. This is a well built wall with a deep foundation trench. It must be part of the original construction without a doubt + implies clearly that a wall - garden/courtyard surround, or house? - definitely continues eastwards



T.38. JN Ahrop. 22/9/93. [20] (1) joining frags.
 1 Small bag coarseware joining frags. including 1 rim frag weak red
 - 1 rim frag tiny dripware.

T.38 JN Ahrop. 22/9/93. [22] Bag 2.
 1 Small bag coarseware body sherds.
 1 Small amphora toe
 1 Small coarseware handle frag.
 1 Coarseware body sherd with mend hole.
 1 Rim fragment grey ware.
 1 Rim frag pie crust.
 1 Coarseware cooking fragment.
 1 Coarseware body sherd handle base fragment.
 1 Body frag mesh black.

T.38. JN Ahrop. 25.9.93 [20] (11)
 1 large bag coarseware body sherds
 2 Joining frags rim - red glaze flat plate.
 1 frag. red-glaze with mend hole.
 5 Rim fragments fish plates.
 4 Coarseware rim fragments.
 1 fragment cooking ware - body sherd.
 4 Body frags bright red glaze.
 2 Large rim frags - large vessels or amphora stand? One with exterior
 wavy lines.
 2 Fishplate bases.
 8 Coarseware ring base fragments.
 1 Neck fragment small vessel neck brown paint.
 2 Rim frags - nest slope ware bagged as objects

T38. JN Ahrop. 26.9.93. [23] (6)
 1 Medium/large coarseware body sherd bag
 11 pieces coarseware cooking ware body sherds
 1 Coarseware body sherd w. handle base.

[20] (1) joining frags.
 1 Small bag coarseware joining frags. including 1 rim frag weak red
 - 1 rim frag tiny dripware.

[22] Bag 2.
 1 Small bag coarseware body sherds.
 1 Small amphora toe
 1 Small coarseware handle frag.
 1 Coarseware body sherd with mend hole.
 1 Rim fragment grey ware.
 1 Rim frag pie crust.
 1 Coarseware cooking fragment.
 1 Coarseware body sherd handle base fragment.
 1 Body frag mesh black.

[20] (11)
 1 large bag coarseware body sherds
 2 Joining frags rim - red glaze flat plate.
 1 frag. red-glaze with mend hole.
 5 Rim fragments fish plates.
 4 Coarseware rim fragments.
 1 fragment cooking ware - body sherd.
 4 Body frags bright red glaze.
 2 Large rim frags - large vessels or amphora stand? One with exterior
 wavy lines.
 2 Fishplate bases.
 8 Coarseware ring base fragments.
 1 Neck fragment small vessel neck brown paint.
 2 Rim frags - nest slope ware bagged as objects

[23] (6)
 1 Medium/large coarseware body sherd bag
 11 pieces coarseware cooking ware body sherds
 1 Coarseware body sherd w. handle base.

T.38. JK Ahrop. 26.9.93 [23] (6)

- 8 Courseware rim fragments.
- 2 Fishplate rim frags.
- 1 Rim frag small - light green glaze.
- 4 Light-red glaze body sherds.
- 5 Light-red glaze rim fragments.
- 2 Courseware body sherds round - probably towards the base.
- 5 Ring base fragments - 1 light brown paint.
- 1 Neat-red paint rim frag - thick fabric.
- 4 Rim frags - small vessels / neat black + red.

A.38. JK. Ahrop. 27.9.93. [23] (15)

- 1 Medium size bay courseware body sherds.
- 5 Fishplate rim fragments - 1 of which has neat red paint
- 4 Courseware ring base fragments
- 3 Small rim frags - 1 with red + black / 1 black
- 2 Mortarium rim fragments
- 4 Connecting rim fragments - courseware complete.
- 6 Courseware rim fragments.
- 1 Complete lug handle.
- 2 Strap handle fragment
- 2 Sherd
- 1 Base frag unfooted
- 6 Courseware cooking frags
- 1 Body sherd - neat red round bowl rim fragment.

T.38. JK. Ahrop. 27.9.93. [25] (16) Bay 1.

- 1 large Bay courseware body sherds incl. large pithos frags.
- 2 large pithos rim fragments joining - signs of burnt interior.
- 1 Round base cookingware.
- 4 Cookingware body sherds
- 2 Joining fragments - rim + lug handle cookingware
- 1 Rim + lug handle cooking fragment.
- 3 Fishplate rim fragments.

T.38. JK. Ahrop. 27.9.93. [25] (16) Bay 1.

[Faint, mostly illegible handwritten notes on the right page, possibly bleed-through or very light writing.]

- T. 38. JK Athrop. 27/9/93 [25] (16) Bag 1
- 1 Red glaze rim frag. fine cup - external grooves.
 - 2 Red glaze body sherds
 - 1 Weak red paint - echinus rim fragment.
 - 1 Red glaze ring base fragment. - reddening interior.
 - 1 Open bowl rim fragment - weak brown/black splotchy paint.
 - 1 Coarseware ring base fragment.
 - 1 Greyware body sherd.
 - 2 Echinus bowl rim frags. 1 light orange
 - 4 Assorted rim fragments 1 weak black.

AK J-K T. 38 28.9.93 [25] (25)

- V. Small bag c-w body sherds
- 1 double rope handle + rim
 - 1 double handle frag, c-w, round
 - 8 footed base frag, c-w., 1 with weak black exterior
 - 1 fish plate base frag. 1 neck frag. with weak red paint.
 - 1 large outturned rim frag.
 - 1 mortarium rim frag.
 - 1 echinus bowl rim frag. weak red paint
 - 1 footed frag. base, weak red glaze, flat plate
 - 1 " ring base frag, weak orange fabric.
 - large collection of cooking ware body frags including 4 rim frags.

AK J-K T. 38 28.9.93 [23] (25)

- 1 small-medium c-w body sherds. 1 fine rim frag., brown, 2 incised lines brown paint on exterior
- 2 joining frags, c-w, footed base. 1 c-w rim frag., weak black
- 3 footed base frags, 1 with weak red glaze interior 1 body sherd, splotchy red
- 1 base frag., unfooted round base, weak brown slip. 1 turning handle frag.
- 2 fish-plate rim frags, c-w. 2 body sherds, splotchy painter
- 1 echinus bowl frag. rim., with weak red + black paint 1 rim frag. with handle base, small, brown.
- 1 rim frag, 2 incised lines on rim, small vessel
- 2 joining frags, including rim, fine red glaze bowl or cup
- 2 joining frags., with pair vertical gauged lines, with weak red exterior.

AK T. 38 [24] (4) 29.9.93.

- 1 v. small c-w body-should bag.
- 1 aryballos body frag. c-w. collection of orange fabric body sherds (large)
- 2 rim frags., c-w.

AK J-K T. 42 3.10.93 [27] (4) Bag 2. : large bag c-w body sherds.

- 5 c-w rim frags. 3 fish plate rim frags. 4 c-w ring base frags
- 1 echinus rim frag., 4 handle frags. c-w. 2 red glaze base frags. ring base
- 1 red glaze plate frag. 1 gauged ware body sherd. 1 body sherd pie-crust
- 1 cooking ware body sherd.

AK J-K T. 42 3.10.93 [2] (4) Bag 1 large bag c-w body sherds

- 6 ring base frags. 1 fish plate. 2 fine red glaze body sherds
- 1 large rim + strap handle frag. joining rim 1 large pie-crust rim frag.
- 5 c-w rim frags. 1 gauged ware c-w body sherd 1 bowl frag., pointed

AK J-K T. 42 6.10.93 [4] (1) Bag 1.

- Large sherds of storage vessels + other large pieces
- Big pieces of cooking ware (round base) 1 grid-glaze plate base frag.
- 3 handles (complete). 1 c-w footed base frag. 1 amphora toe

AK J-K T. 42 6.10.93 [4] (1) Bag 2

- largish collection of c-w body sherds
- 3 pie-crust body frag. decoration 1 lug handle
- 1 gauged ware (coarse) 5 footed base frags. 1 red glaze frag. (fine)
- 1 fish plate rim 3 coarse ware rims 1 echinus rim (weak red)

AK J-K T. 39 5.10.93 [40] (3)

- Small c-w collection 3 c-w rim frags (2 mortarium)
- 2 body sherds red paint ware 1 ring-base c-w frag.

AK J-K T. 42 9.10.93 [6] (3)

- V. Small bag c-w body sherds
- 1 red-glaze body sherd, 1 strap handle, 1 ring base frag., 1 drip-ware frag.

AK J-K T.42 30.9.93 [1] (1)

Small bag c-w body sherds

5 ring base frags. 1 brown rim plate frag.

5 c-w rim frags. 1 black/brown rim with white ^{peaked} incised lines

2 cooking ware frags. 1 red glass body sherd with mend hole.

AK J-K T.42 3.10.93 [2] (1)

Large frags. of pot with base frag. c.-w.

AK J-K T.42 29.9.93 [42] (1)

Small bag c-w body sherds 2 c-w rim frags. 1 weak-brown rim frag.

1 large pithos rim frag. 5 ring base frags, 1 large vessel.

1 rope handle frag. 2 red-glaze plate frags. 1 c-w gauged-ware frag.

1 figurine frag. bagged as [42] (1) figurine of draped female fig.

AK J-K T.42 5.10.93 [3] (3) bag 2.

Coarse-ware body sherds, largish 1 c-w rim frag., large,

1 fish-plate base frag, c-w. 1 pie-crust rim frag. 1 body frag. with pie-crust

3 ring-base frags, 1 weak black, 1 orange fabric 1 echinus rim frag. weak black

1 strap handle frag 1 body frag with handle base

1 body sherd incised lines on exterior

AK J-K T.42 3.10.93 [3] (4) bag 1.

Small bag c-w 1 fish-plate rim frag 1 round handle frag

1 cooking-ware body sherd. 2 coarse ware rim frags., 1 weak black

AK J-K T.42 5.10.93 [3] (3) bag 1.

V large collection c-w body sherds. 1 round handle frag.

1 c-w handle frag. 1 fish-plate rim frag. 1 echinus rim 2 c-w rim frags

1 pie-crust decorated body sherd. 1 ring base frag.

AK J-K T.42 6.10.93 [4] (6) 5wc

Middle-size bag body sherds including storage vessel.

5 ring base c-w frags. 3 handle frags (1 lug, 1 double)

1 red glaze frag. 1 red glaze handle (2 joining pieces) 1 amphora toe

1 fish plate rim frag. 1 gauged ware body sherd

1 out-turned rim (weak red)

AK J-K T.42 7.10.93 [5] (4) (Bag.1).

Large collection body sherds.

3 black-glaze frags (2 fine) 1 black drip ware body sherd

1 rotalade handle 1 gauged body sherd (par'lt.) 4 base frags (ring)

1 handle frag. 1 unfooted base, red paintware 11 rim frags including fine bowl

2 handle frags (weak red)

AK J-K T.42 7.10.93 [5] (4) Bag 2

Large collection body sherds

3 cooking ware body sherds 1 large red base frag. with stamped palmates

1 red-glaze plate frag. 6 ring base frag. 1 fish-plate base frag.

1 brown rim frag. 4 rim frags 1 gauged ware red frag.

1 large handle frag.

AK J-K (T.38) 10.9.93 NW Bank Clearance

Small collection of body sherds.

1 body sherd with mend whole: 1 rim frag. open-mouthed bowl. plus 1 handle

frag. (strap) from the same vessel.

AK J-K T.42 13.10.93 [7] (2) full neck + shoulders with double

handles to shoulder of wide-mouthed vessel.

AK J-K T.42 14.10.93 [8] (2) Bag 2: largish bag c-w body sherds

2 amphora toes 3 ring-base frags, one with red paint + par' grooves on interior

6 c-w rim frags 1 echinus rim frag. 10 rim frags. red or brown paint or fabric

1 neck frag. of unguentarium, dark brown fabric

AK J-K T.42 13.10.93 [7] ③

2 figurines bagged as objects (plaque - 4 frags + fam. draped figures)
Meduin bag body sherds
2 amphora toes 3 handle (large) frags 1 red-glaze frag.
3 ring base frags 1 cooking ware rim 1 echinus rim weak red

T.42.

FWC.

29.9.93

Opened out at trench to the W. of T.41: 4.5 x 5 m. to determine the west frontage of the building. We expect to be basically outside the house but we should get at least two joining walls. The day will be spent clearing topsoil. [92] ① is pottery.

30.9.93.

We continue to clear - with a great deal of tumbled stones. I don't expect much definition for the day.

T.42.

Oct. 4, 1993

Have large team to clear as much as possible. No definition just dirt + tumbled stones. We will get surface sherds but I suspect little else. I'll call the locus to-day [2] as we are below the plant + topsoil level. A substantial amount of pot from the SW corner is bagged as [2] ①. A column drum appears to be emerging in the NW corner(?). [2] ② is a nail frag. [2] ③ clamping metal. So far as I can see we have only an EW wall (rubble) in the S baulk; so we are removing rubble. Pottery will be [2] ④ bags 1 + 2.

Oct. 5. 1993

Again, a great deal of stone but little in the way of definition - + I have to suspect, a pretty empty trench. We have found in surface fill an unusual pottery spout/neck bagged as [3] ①. We have also encountered high up a weak but clear + unfortunately much damaged floor on the west side of the trench. A second floor is emerging on the E side of the trench with a thin, weak EW wall halving the trench. [3] ② metal pin, [3] ③ two bags in pottery, [3] ④ glass frag. I can't believe we are inside the original house at all.

6.10.93

We have a very weak + poor NS wall which meets a similarly poor EW wall in the S baulk. The floors in both halves are particularly weak + irregular. I don't think it worth cutting through but I may in one section after finishing. A large pot filled with other pots has emerged on the floor on the E side. A zambed of pottery from it is [4] ①, a lamp from inside [4] ② - 7 wicks

6.10.93

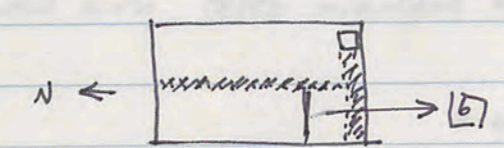
T. 42

- [4] [3] is the full profile of small echinus bowl.
- [4] [4] is a lamp frag. from inside the large storage vessel.
- [4] [5] glass frag. [4] [6] small general bag of pottery, bag of bone

7.10.93.

T. 42

We are clearing along the south wall in the baulk of the trench. This will be [5]. I will need to decide whether to cut down at one area or not + clear to bedrock. A block of a wall has appeared in the SE corner. To determine the underneath floor level in case there was previous occupation related to the original house I will cut down to the N of the weak wall. [5] [1] is a glass frag, [5] [2] is a black bead, [5] [3] nail all from SE corner. I cannot understand why a good wall from T.28 should just finish without reason in the SE corner of this trench unless the wall in the trench to the E (T. 41) is sitting on good wall, which seems impossible as bedrock is high at that point. [5] [4] bags 1 + 2 are pottery



9.10.93

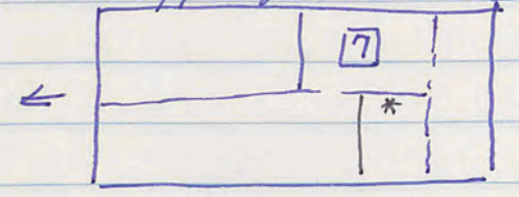
T. 42

We are cutting to what appears to be a clear floor level in the SW area (10-day called [6]): the wall above is weakly laid, but there is no sign of original walling. [6] [1] is a metal piece. The wall is simply sitting on soil. [6] [2] is a brooch piece/pin, [6] [3] pottery including frags. of a large pot on the weak floor level. The portion of the pot still in ground was removed on 11.10.93.

Conclusion: This appears not to be inside the house but perhaps perhaps part of a large enclosed garden space on the west side of the building — but the area was reused for minor rooms with weak walls + floors at a later time.

AK J-K T. 42 15.10.93

We are cutting through a portion of the eastern section of the trench, underneath the upper floor. locus 7



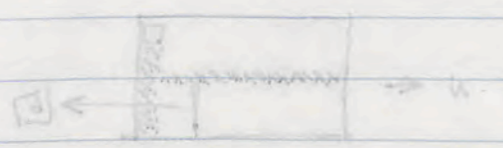
7 1 is a hand-moulded figurine frag. (animal head). Fingerprints visible. 7 2 are neck and shoulders plus double handles complete of large c-w vessel. 7 3 pottery for the day.

AK J-K T. 42 14.10.93

We continue in the same SE sector as yesterday, cutting down further towards the floor. This will be locus 8. 8 1 nail

8 2 one bag of pottery (in one hour!), * 8 3 CB coin found cleaning the floor to the W. side of the N.S. wall (an area cleared previously), 8 4 a whet-stone, 8 5 metal applicator (scalpel) - found in the back out of contact, 8 6 metal ? earring of twisted wire, 8 7 moulded animal (? bird).

* 93.678: Demetrius II (145-0)



For the cutting to what appears to be a clean floor level in the SE area (to-day level 8): the wall above is roughly level, but there is no sign of original walling. 8 1 is a metal piece. The wall is roughly rising on site. 8 2 is a hand-pierced; 8 3 pottery. Excavating part of a large jar on the west floor level. The portion of the jar still in ground was removed on 11.10.93.

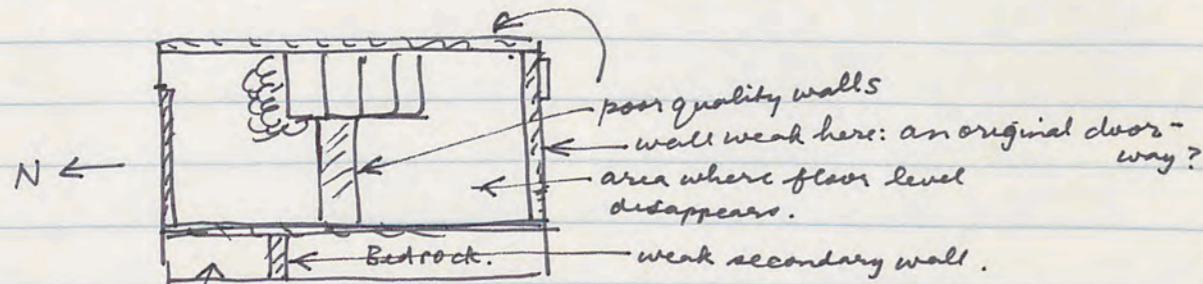
Conclusion: This appears not to be inside the house but perhaps perhaps part of a large outdoor garden space on the west side of the building - but the area was raised for drainage reasons with walls & floors at a later time.

T.44 12.10.93 cont'd.

A secondary (later) wall is emerging near the west baulk running East-West. A solid coin has been found in the deposit we are clearing in the NW corner, [7] (11), [7] (12) metal clamping pieces from SE corner. 9 clay rosette loom weights [7] (13) and 2 clay triangular loom weights have come up near the floor in the SE corner, some of them from underneath the tumble used for creating the staircase. There are four large bags of pottery [7] (14) Bags ① to ④, an exceptionally large bag of bones and a small bag of charcoal.

T.44 13.10.93.

We are clearing to-day to bedrock or floor levels. The locus throughout will be [8]



The area on the West side has been cleared to bedrock. In the NE corner the tumble has proved unstable & we are clearing away the baulk to reveal the wall in the baulk. In the SE corner there is a firm floor where I presume another step rested but towards the W it disappears. Here a large number of artefacts have emerged:

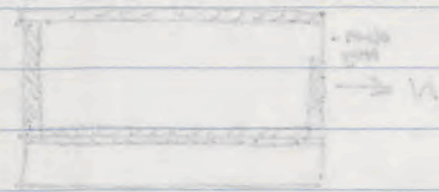
- [8] (1) glass frag? including a rim frag. [8] (2) pierced shell (for necklace)
- [8] (3) small clay loom weight or weaving weight [8] (4) two bone shuttles, semi-circular, [8] (5) a coin from this floor-clearing level, [8] (6) frag. of metal bangle
- [8] (7) a basalt weight, [8] (8) an exceptionally large bag of nails, [8] (9) 2 stone spindle whorls, [8] (10) bead, [8] (11) a frag. of iron ring, [8] (12) metal applicator, [8] (13) bronze frag., [8] (14) bone bangle frag., [8] (15) bone applicator frags.

It is now very clear that the staircase is a late construction, reusing worked stones, one of them a roofing stone, another finely plastered in white, the whole construction resting on a weak foundation of field-stones. There is a doorway in T.44 to the N for access into the courtyard and S into the colonnade.

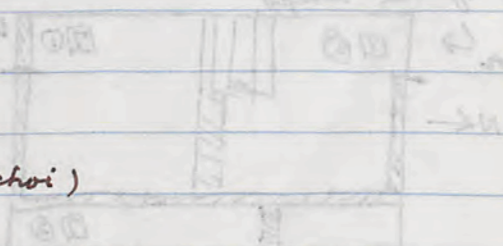
Pottery for the day is [8] (16), with another large bag of bones.

The trench was cleaned & photographed.

* = 93.624: Ant.vii



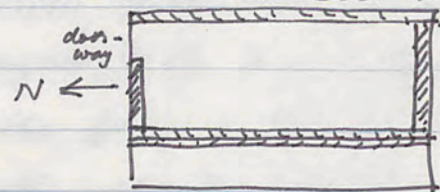
* = 93.652: US (one of the Antiochoi)



7.44

9.10.93

Continuing to clear surface soil and stone tumble from throughout the trench. This level I'll call locus [4] to-day.



So far a NS wall is emerging as well as the wall in the S. bank. [4] ① is a lamp frag. from close to the NS wall in mid-trench. [4] ② is a metal applicator (v. fine) from same location as [4] ②

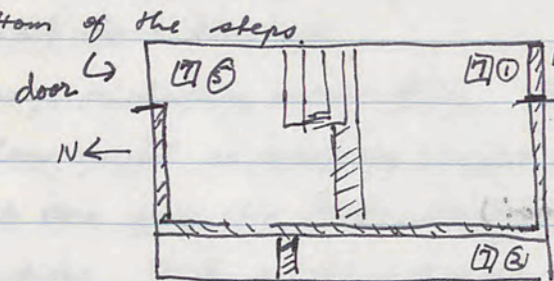
Two complete worked blocks have been removed from the surface level
One: 57 x 40 x 20 . The other 66 x 20 x 50

We are trying to cover the first 50 c.m. or so of topsoil + rock tumble. The soil appears to have been heavily disturbed, presumably from stone-robbing. There is a bag of bone, small one of charcoal + pottery is [4] ③

7.44

12.10.93

I'll call to-day locus [7] as we go down through the deposit of light wind-blown dust towards the floor level. [7] ① is a small coin (^{obol} Greek obol) from the SE corner, well down towards floor level at the bottom of the steps.



The staircase has emerged as a poor later construction re-using original building blocks + based on a rubble fill.

[7] ② is a fine needle or pin, at ground level, along with a great deal of bone.

[7] ③ are ^{two} lamp fragments from the same locus as [7] ②, and [7] ④ is a large nail from the same area. [7] ⑤ is a metal fragment from the NE corner, [7] ⑥ from this area is a round metal stall, perhaps from a spear shaft. [7] ⑦ are glass frags. from NE corner, likewise [7] ⑧ 2 loom-weights, unusually made of bone. [7] ⑨ a frag. of a metal ring. It appears there is a doorway in the S. bank matching that in the N. bank. Tekel level has been reached in the area of [7] ② without encountering a floor, implying this area was outside the house. [7] ⑩ frag. of metal brooch or pin from SE corner

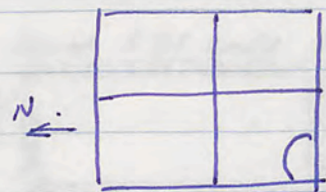
= US: 93.625: US

S-

T. 37.

6.10.93

SE with BAT at Membij hospital.



in SW quadrant a nail head(?) is object ①.

SE " " spindle-whorl (stone) ②

SW quadrant bone + pottery ③

SE " " pottery ④

