

DIG BOOK OCTOBER 1991 - Book 2.

1	M95	9/5	working in E end: circuit wall	1-10-91
2	"	"	cutting	"
3	"	"	cutting	2-10-91
4	"	"	cutting - elevation drawing (see H)	5-10-91
5	"	"	stone structure SW corner. photo of entrance paving	5-10-91
	M92			
6	M95	"	stratig + finds.	6-10-91
7	"	"	structure for support to circuit wall? New 1 and unsure which "structure" he is referring to.	"
8	"	"	cutting -	7-10-91
9	"	"	cutting - also strat. + frags.	
10	"	"	cutting	
11	"	"	" + strat + frags etc.	8-10-91
12	"	"	" junction of tower + wall	"
			* 7cm gap [not on my drawing] photo	
13	"	9/6	new number to 1990 trench. strat. + finds.	"
14	"	9/5	strat. + finds etc.	9-10-91
15	"	9/6	reaching foundation stone + bedrock on W face of tower	"
16	"	9/5	* 5th course circuit wall rests 200mm on tower strata etc.	"
17	"	"	cleaning work. abutting wall built shortly after tower.	10-10-91
18	"	9/6	work continues.	"
19	"	9/7 (SM91)	1m x 1m spit in SW corner of SM91 mud floor 3-5cms thick & ledge is there.	"
20	M95.	9/5	reached bedrock of tower + wall elevation sketch of tower wall agrees with mine.	"
21	M9N. ?		cleaning SE corner of trench limestone floor, ledge, drain and bedrock - [is this NM91?] for photo.	12-10-91.

END OF ENTRIES.

DOMESTIC

1-10-91	2	207/6 photo.
9-10-91	12	photo the "flint" trench + Radis' trench
10-10-91	19	photo 206/3.

STOA

Rowney's dig book
analysis & trench layout &
identification.

- NM9 1 + 2
- EM9 3

DIQ NOTES SEPT. 1991 BOOK 1.

p3:	MGN 91/1:	Picks up with NMQ3 (4.6.90) moving bank and now calls the trench MGN 91/1 picking up an 'anomaly in the structure' i.e. the 'postern' gate. (Sally post)	9.9.91
4	"	Continues.	"
5	"	continues with plan. refers to S. & W. perimeter of inner room & wall thickness = 3.39 which is thicker than I have it. refers also to drain (in M91) 1.7m long to preserved stone, 1.65 to W face of wall ∴ total 3.35m.	"
7	"	continues to reveal passage.	10.9.91
9	"	" " " "	"
10	"	" " " " & photos	11.9.91
11	"	more work on the passage & plan with dimensions (no dimensions agree with mine!) (see over)	"
12	"	continued	"
13	MGN 91/2	91/2 refers to E. portion of trench looking for circuit wall width.	"
15	-	working along N wall of N Tower	12.9.91
16	91/3	Difficult to pinpoint this "trench" - refers to Jack's trench + Peter's trench (?)	14.9.91
18	MGN 91/3	junction circuit wall + tower. Dig and notes on back passage	15.9.91
19	"	continued. photo.	"
20	"	junction circuit wall and tower. Plan showing 5 stones + dimensions (I do not have these dimensions). (see over)	16.9.91
21	"	continued.	"
	MGN 91/2	-	"
22	-	cleaning NW corner of N Tower	17.9.91
25	-	NW corner N Tower (Jack's trench?)	18.9.91
27	91/4	New trench NE corner N Tower.	19.9.91
28	91/1	photo 'Sally post'. Discussion re ledge in S. tower.	21.9.91
29	91/3	N. face N. Tower & photos NW corner	"
30	91/4	- refers to decorative facade = a feature of the external face of the tower.	22.9.91
31	"	continued.	"
32	"	"	23.9.91
33	"	" plan + description.	"
34	"	" straty + photos.	"
36	"	" "	"
38	"	frags etc	24.9.91
39	"	sketch plan showing how packed limestone floor continue from 24 + 23! frags etc	25.9.91
40	"	Continues.	"
42	"	"	26.9.91
43	"	"	"
44	-	W. of N. Tower - cleaning up - revealing wall.	28.9.91
45	"	continues	"
46	"	" 6 courses down - stone juts out. (not noted on my drawing)	"
47	"	continues.	"
48	MGS 91/5	new trench: description,	29.9.91
49	SMQ1	small trench in SW inner corner sketch elevation of E wall face.	"
50/51	91/5	continues - also N. Tower inner room E wall (?)	30.9.91
52	91/4	Start.	"

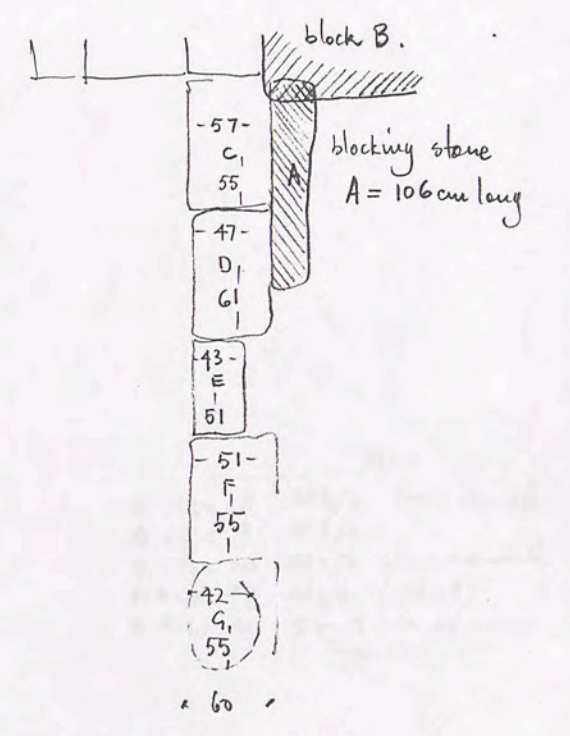
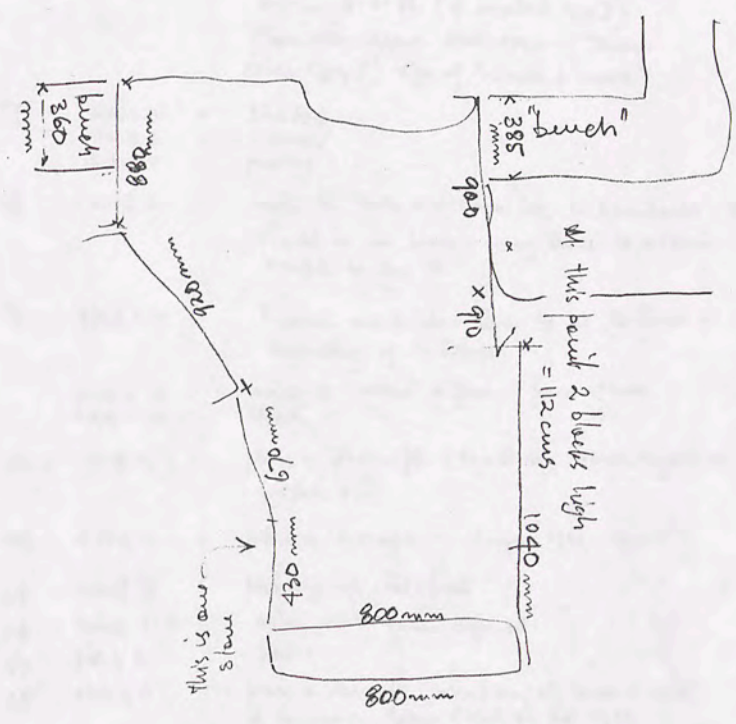
9.9.91	1	208/8 + 179/9.
"	2	207/7 removal of bank.
10.9.91	6	206/2 } pegged out. 207/5 }
12.9.91	15	207/5 photo 206/2 "
14.9.91	17	178/1 + 179/7 + 207/5
18.9.91	23	208/9 - description.
"	24	" continued
"	26	179/8 + 179/7
19.9.91	27	207/6 - new trench 206/2
23.9.91	32	207/6 179/9 - new trench.
"	35	large sketch West End. same desc. over page.
24.9.91	36	206/2 photos
24.9.91	37	large sketch 208/7/8/9
25.9.91	40	179/2 } 179/7/8: " } much discussion & plan
26.9.91	43	207/6 photos & sketch
"	45	207/6 "
29.9.91	48	206/3 206/2 "

Notes on Domestic Section on last page.

STOA

10.9.91	6	363/2
"	7	391/3, 392/9 photos
"	8	363/2
"	12	" + 363/5 photos.
12.9.91	14	"
16.9.91	21	363/2 + 364/8
18.9.91	25	392/3
21.9.91	28	363/1
23.9.91	34	392/3 photo.

18.9.91 25 Picture to Acrobati.



p. 20.
Back 1-1991

where the circuit wall joins the tower.
foundation blocks on foundation trench.

DIG NOTES: 1990 Book 3

- p1: NMQ 2 : 2. 6. 90.
- 2: SMQ 1 : confirms wall/tower junction " "
- 5: SMQ 1 : " "
- 6: NMQ 2 : " "
- 7: NMQ 2 : sketch (unclear). 3. 6. 90.
- 8: SMQ 1 : sketch " "
- 10: NMQ 2 : gate entrance decoration? " "
- 11: EMQ 5 : Frag's etc 4. 6. 90
- 12: SMQ 1 : Tower + circuit wall junction " "
- 13: SMQ 1 : Plan + elev's of tower + circ. wall. (my draw's H) " "
- 14: - : North Tower general dimension " "
- 15: NMQ 2 : Plan of construction of level with shelf. " "
- 16: NMQ 3 : trench measured out 5 x 3 to catch W. Boundary. plan: work continues " "
- NOTE this NMQ3 is not that pegged w/in 4.6.88. (I worked '89?)
Plan also shows NW corner of tower (also '89?) size of trench & name?
- 17: NMQ 2 : photos. " "
- NMQ 1 : cleared
- SMQ 1 : photos.
- 18: NMQ 3 : notes to docs N.W. corner '89. S. boundaries should be in line - may have to extend NMQ3 to the S. 5. 6. 90
- 19: SMQ 1 W : Trench extended 3m to W to find W boundary of S. Tower. - " "
- SMQ 1 N : corner of "room" different from others.
- SMQ 1 S : straty.
- 23: NMQ 3 : plan + descript. (show my trench layout be further S? " "
- 24: SMQ 1 : plan + descript. (refers 1988-1990-?) " "
- 25: NMQ 3 : picking up int. wall. 6. 6. 90
- 26: SMQ 1 W : outer wall face defined. " "
- 27: SMQ 2 : photo. " "
- 28: NMQ 3 : plan + descript. junction of tower + wall & corner of tower (NW) as per 1989. US dimension of inner room = 10.37. wall thickness 3.30 (W) & 3.20 (S). " "
- 30: NMQ 3 : - 7. 6. 90
- 31: SMQ 1 W : descript'n. " "
- 32: SMQ 1 : Plan + descript'n - facade of S. Tower. (hard to match to my draw). 9. 6. 90
- 33: - : North Tower: speculate on internal room N-S dimensions. plan & dimensions shown - do not agree with my plan. Also refers to DRAIN [NMQ 1?] 3.80m long " "
- 38: - : General review of tunnels -

Back Cover contains notes re needs.
last page = 38.

DOMESTIC

- 2. 6. 90 4 179/8/1 photo.
- 5. 6. 90 21 179/8 + Room 3 (?) Plan + descript.
- 22 " "
- 10. 6. 90 35 big plan noted of long area around 208/9. agrees with mine.
- 10. 6. 90 36 plan of S. boundary wall noting only 1 door.
- 10. 6. 90 37 plan showing 1st & 2nd occup. of 208/6 + 179/4 etc.

STOA

- 2. 6. 90 3 363/2 plan + descript'n
- 3. 6. 90 9 363/2
- 5. 6. 90 20 363/2 plan + descript'n
- 6. 6. 90 27 363/2 (263/2?)
- 9. 6. 90 34 general info on many tunnels.

- 6. 6. 90 27 photo Judith's above near car stopping point. & short descript.
- 6. 6. 90 29 various descript's
- 7. 6. 90 31 photos acropolis.

Dig Notes 1990 Book 2.

- p1. EMG 4: early excavation. 13.5.90.
- 2. EMG 5: - 14.5.90
- 3. EMG 4: - "
- EMG 5 - blocks appear.
- 4. EMG 5: - 15.5.90
- 5. EMG 4 - drwg of corner. "
- 6. EMG 5 - "
- 8. EMG 5 - Entrance begins to show. 16.5.90
- 9. EMG 4 - "
- 10. EMG 4 - strat. "
- 11. EMG 4 - strat. "
- 14. EMG 5 - sheet D 1990. 17.5.90 (checks dimensions)
- 15. EMG 4 - "
- 16. EMG 5 - sheet D 1990. plan. "
- 18. EMG 5 - strata. 21.5.90
- 19. EMG 4 - interior corner. "
- 20. EMG 4 - Drwg of positioning of trench G. (SMG2) "
- 21. EMG 5 - Plan + description. "
- 22. SMG 2 - drwg shows SMG 1, SMG 2, and EMG 4, layout. 22.5.90
- 23. EMG 5 - extension to North. "
- Drwg of trench + extension
Trench 5x3 + Ext'n 2.5x2.
- 24. EMG 5 - 23.5.90
- 25. EMG 4 - cleaning. "
- Drwg (F) - seep. 30.
- 26. SMG 2 - "
- 28. EMG 5 - 24.5.90
- 29. SMG 2 - "
- * 30. EMG 4 - drwg of inner faces of SW corner. "
- (no drwg by B.G.R.)
& description.
- 32. EMG 4 - drwg which corresponds (only just) 24.5.90
to sheet F.
- 33. EMG 5. W - descriptions - domos sloping 26.5.90
up W. V-cut field stones or rubble
in rubble (rebuilt?)
- 33 (Note: 2 page 33!)
- SMG 2 - drwg + sheet G + description. (Plan) "
- (note: my drawing dated 21 Sept. 1991.
Dig book 26.5.90.
I left early that year.)
- 35. SMG 2 - refers to earlier comments 1988 26.5.90.
re SMG 1.
- ? 36. NMG 1 - can be seen on sheet L. "
- 37. EMG 5. W 27.5.90
- 38. SMG 2 - description, strata. "
- 40. EMG 5. W 28.5.90
- 41. SMG 2 - "
- 43. NMG 2 - 4m x 3m measured ext. 29.5.90
- 44. SMG 2 - stratigraphy. "
- 47. SMG 2 - "
- 48. NMG 2 - 30.5.90

DOMESTIC

- 15.5.90 p7: 207/3. plan & description photos.
- 16.5.90 12: 207/3 - door.
- 16.5.90 13: 207/3 - door (contd.)? } 208/7
- 207/7 - refers to Miksleuts' plan
- 17.5.90 15: 206/1 -
- 27.5.90 37: 206/5 + 206/1, 206/4 (1989)
- 28.5.90 42: 178/1 photos

STOA

- 17.5.90 15: 364/2
- 364/5
- 17.5.90 17: 333/4
- 23.5.90 27: 391/3 with drwg.
- 24.5.90 31: 391/3.
- 26.5.90 34: 391/3 + 333/8
- 27.5.90 39: 391/3
- 28.5.90 42: 391/3, 392/3.
- 363/2, 364/6, 363/5?
- 28.5.90 46: 333/8 photos.
- 29.5.90 45: 391/3
- " 46: 363/2

DIG NOTES 1990 Book 2 Contd.

p49	- SMQ 2	. description of walls - shown on sheet 9.	30.5.90	30.5.90	51
50	- NMQ 1	- N. wall stratigraphy sketches and description. (continues over page ie 50A.)	"	31.5.90	58
53	- NMQ 2	-	31.5.90		
54	- SMQ 2	- refers to M. Galvin's 1988 trench. sketch + description of S. Wall (BGR. does not have a drawing of this)	"		
55	"	continuing description & drawing of towerland circuit wall.	"		
56	"	"	"		
59	-	General plan of two trenches & dimensions. with references to other books. comments.			

DOMESTIC

178/1 photo, stratigraphy & sketch etc
 178/2. Radiocarbon trench!
 178/1 photos. Plan + description.

STOA

30.5.90 52 363/2
 31.5.90 57 363/2 photos. (364/8)

Dig Notes - 1990 Book 1

- 5 drain - robber pit (NMQ1?) near L 22.4.90
- 9- EMQ1 corner 4 J. Secondary wall. (EMQ1) 24.4.90
- 10 - " North of J. wall X = elevation Yan sheet K 1990 24.4.90
- 11 EMQ1 + Trench E photo of bowl robber pit. 28.4.90
- 15 NMQ1 m3? (near L) robber pit. cleaning South corner N. Trench? 29.4.90
- 17 - NMQ1 - stratum 2. Robber pit. 30.4.90
- 18. EMQ3. measure out new trench. >>
- 20 EMQ1. Elev X Sheet K 1990. >>
- 21 NMQ1 - cleaning - rubble wall 27m long found E-W. 1.5.90
- 22 EMQ3 - >>
- 23 EMQ3 - rubble wall appears SE corner >>
- 24 NMQ1. rubble wall to 21 - cut 2.5.90
- 26. NMQ1 - stratigraphy 2.5.90
- 27 NMQ1 - >> 3.5.90
- EMQ3 - rubble wall. & large block across corner. >>
- 30 NMQ1 - stratigraphy - have marked white powdered limestone 5.5.90
- EMQ3 - >>
- 31 EMQ3 - stratigraphy >>
- 32 EMQ3 - "levelling course". 6.5.90
- 33 NMQ1 - >>
- 35 EMQ3 - 7.5.90
- 36 NMQ1 - strat. >>
- 37 NMQ1 - wall Z sheet K >>
- 38 NMQ1 - sheet K & L. 8.5.90
- 39 EMQ3 - strat. sheet E. >>
- 40 EMQ3 - strat. finds. >>
- 41 EMQ3 - strat. 9.5.90
- 42 NMQ1 - >>
- EMQ5 = D. laid out.
- 43. EMQ3 - TrE showing matching joints. >>
- 45 NMQ1 - strat. 10.5.90
- 46 EMQ3 - strat. >>
- 47 NMQ1 - strat. 12.5.90
- 48 EMQ3 - cleared to bedrock. >>
- 49 EMQ4 = F. laid out. >>
- 50 EMQ3 - mosaic mark A sheet E 1990. >>
- 51 NMQ1 - down to bedrock. NOTES = see Bk 2 30.5.90 see 26.5.90 13.5.90
- 52 EMQ4 - >>
- 53 EMQ5 - >>

4. 23.4.90 - 207/7, 208/8/9.

6. 24.4.90 -

- 12 house 2. 28.4.90
- 13 " 2 Room 1.
- 14 208/8, 207/7 29.4.90
- 16 " 2 " 3.2.179
- * 19 " 2 " 3.30.4
- 28 208/8 - 3.5.90
- 208/9 - cisterns
- 29 208/8 - 5.5.90
- 33 (392/9)
- 34 208/8 - 207/1 6.5.90
- 44 208/9. etc.
- * 54 house 2 plan. 13.5.90
- 37 207/7, 206/1 7.5.90

STOA.

- p 1. 22.4.90 - 364/5.
- 2 " 364/7/4.
- 364/6 (R).
- 364/6.
- 364/8
- 3 " 364/9/6.
- 4 23.4.90.
- 7 24.4.90 364/5/6.
- 8 " " "
- 23 2.5.90 - 333/7
- 25 3.5.90 - 392/6/9
- 33 6.5.90 - 392/9
- 40 8.5.90 - 333/7/4

DIG NOTES 1988.

Anna's report numbers

- | | | | | |
|-----|----|--|----------|-----------------------------------|
| 1) | 1) | MG1 - laid out - | 21-5-88. | photos Roll-1-106. |
| - | 2 | " - | " | Surface Shovels + Diagnostics |
| 2) | 3 | " - | " | levels. |
| - | 4 | " - | " | - body Shovels + Diagnostics |
| 3) | 5 | " - | " | |
| 4) | 6 | " - | 22-5-88. | |
| 5) | 7 | " - | " | |
| 6) | 8 | " - | 23-5-88 | |
| 7) | 9 | " - | " | |
| 8) | 10 | MG2 - | 24-5-88 | |
| | | Michael opens MG3. presumably MG2 laid out at this stage. | | |
| | | possible levels above sea level shown? | | |
| - | 11 | Body Shovels + Diagnostics. | | |
| 9) | 12 | MG1 - | 25-5-88 | |
| | | MG2 photos of MG1. | | |
| 10) | 13 | MG1 - | " | |
| | | MG2 | | |
| 11) | 14 | MG1 & MG2 - | 26-5-88 | |
| | | MG1 - sizes of blocks. | | |
| 2) | 15 | MG2 - | 28-5-88 | |
| | | refer to weight of large rock 151.46 taken for elevations. | | |
| 13) | 16 | MG2 | | |
| 14) | 17 | MG4 - opened. | 29-5-88 | |
| 15) | 18 | MG2 | | |
| 16) | 19 | MG4 - | 30-5-88 | |
| | | MG2 elevation? | | |
| 17) | 20 | MG4 - | 31-5-88 | |
| 18) | 21 | MG4 - | 1-6-88 | |
| 19) | 22 | MG4 - | 2-6-88 | objects etc |
| 20) | 23 | " | " | |
| 21) | 24 | MG4 - | 4-6-88. | photos numbered. |
| | | MG2 - | | |
| 22) | 25 | MG4 | | |
| | | NMG1 - laid out. | 4-6-88. | |
| - | 26 | NMG1 - | " | Surface Shovels, Diagnostics etc. |
| 23) | 27 | - plan of grid so far | " | |
| | | shows MG1 MG2 MG3 | | |
| | | MG4 MG5 MG6 | | |
| | | NMG1 NMG2 NMG3. | | |
| 24) | 28 | MG2 - bank being removed. | 5-6-88 | |
| | | NMG1. | | |
| - | 29 | NMG1 - | " | - rims, bases, handles etc |
| 25) | 30 | " | " | objects. |
| 26) | 31 | NMG1 + MG1 (levels) | 6-6-88 | |
| 27) | 32 | MG1 - further levels | " | |
| 28) | 33 | MG2 | " | |
| | | MG4 | " | |
| | | MG3 | " | |
| 29) | 34 | NMG1 - find. | " | |
| | | Also objectives for remaining 9 days - | | |
| | | NMG1, MG1 + MG4, MG1 + MG2, | | |
| | | NMG2 + MG4, (NMG3 + MG7) | | |
| 30) | 35 | NMG1 - removing topsoil. | 7-6-88 | |
| | | MG4 - removing bank MG4 + MG1. | | |
| | | MG1 - | | |
| 31) | 36 | MG4 - | 8-6-88. | |
| 32) | 37 | " finds. | " | |
| 33) | 38 | " | 9-6-88 | |
| 34) | 39 | ? seems to refer to MG4 but I think it is more likely to be MG1. | " | |

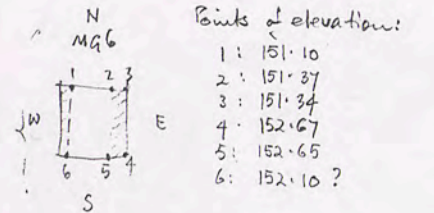
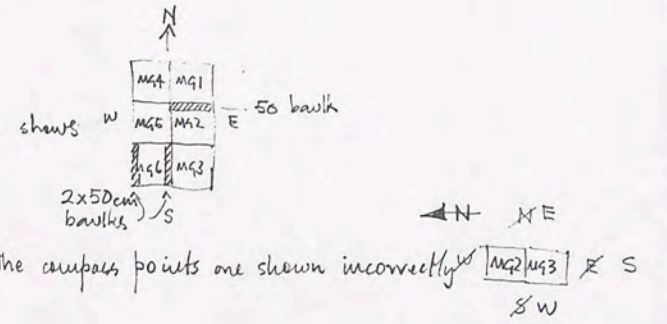
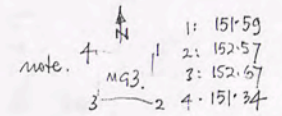
DIQ NOTES 1988 (Contd)

(37)	p 42	-	?	"plaster" is mortar -	11.6.88.
(38)	43	-	"	refers to M92	" - hollowed out stone?
(39)	44	-	M94	but continues discussion from pp. 42 + 43	"
40)	45	-	-	discussion continues (on and on!)	"
(41)	46	-	?	(looks like M91 + M94) levels of courses.	12.6.88
(42)	47	-	"	continues.	" - Parthian shreds.
-	48	-	M94 NM93	finds bodysheds of Diagnostics.	13.6.88
(43)	49	-	M94 + NM93	- finds	"
(44)	50	-	NM93	-	14.6.88
(45)	51	-	" M94	+ - reaching bottom of wall?	"
(46)	52	-	SM91 NM93 + M94	(M97) - clearing	15.6.88
(47)	53	-	M94	- continuation also M97	"
(48)	54	-	M94 NM93 & M97 M94 M92	- levels " " "	16.6.88
(49)	55	-	-	continuation	"
(50)	56	-	all	- pottery list.	-
(51)	57	-	-	"	-
(52)	58	-	-	Sample list	-
-	59	-	-	Locus list	-
-	60	-	-	Object. (list)	-

DIY NOTES 1988

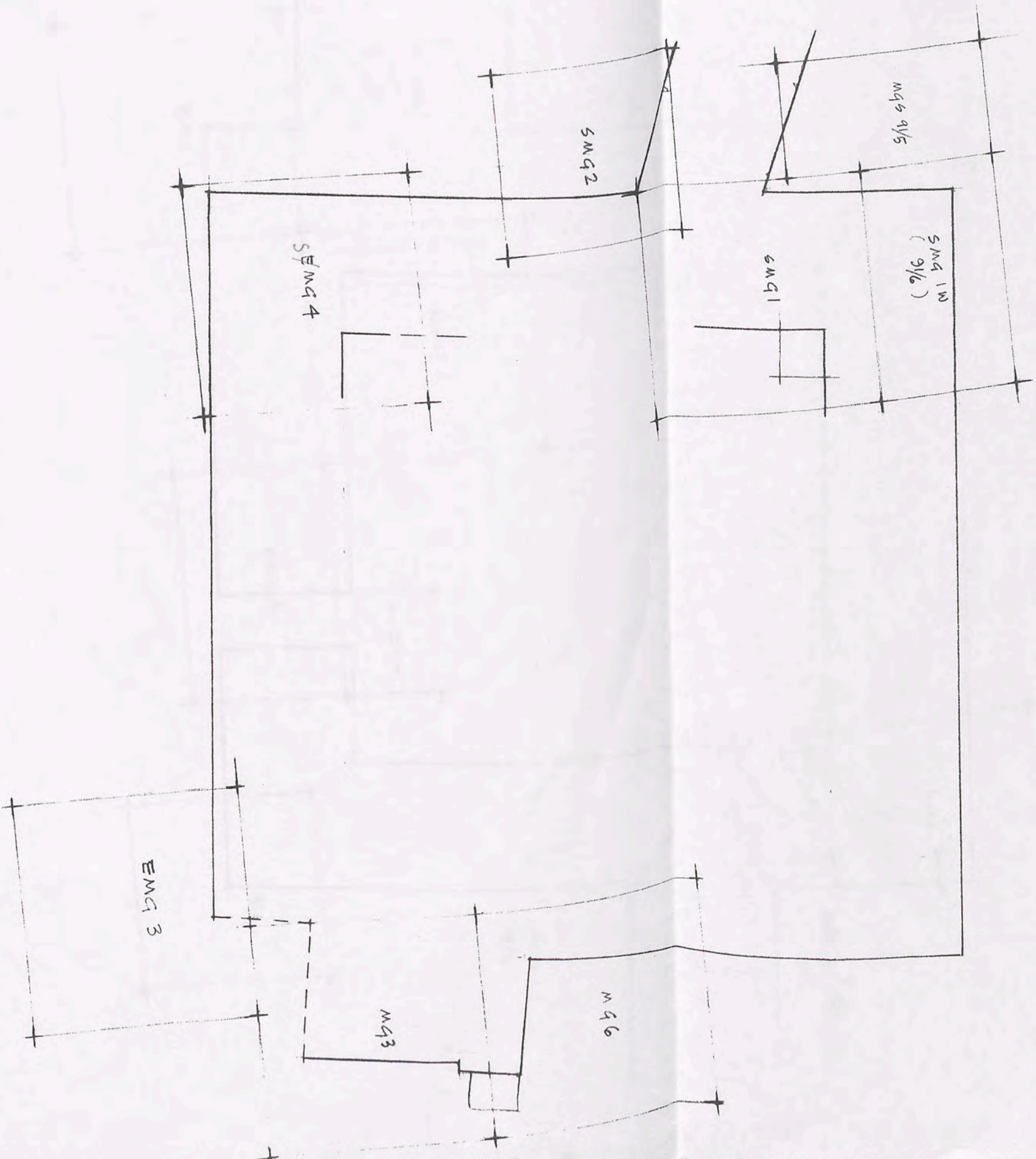
eg. numbers refer to my numbering of all pages.

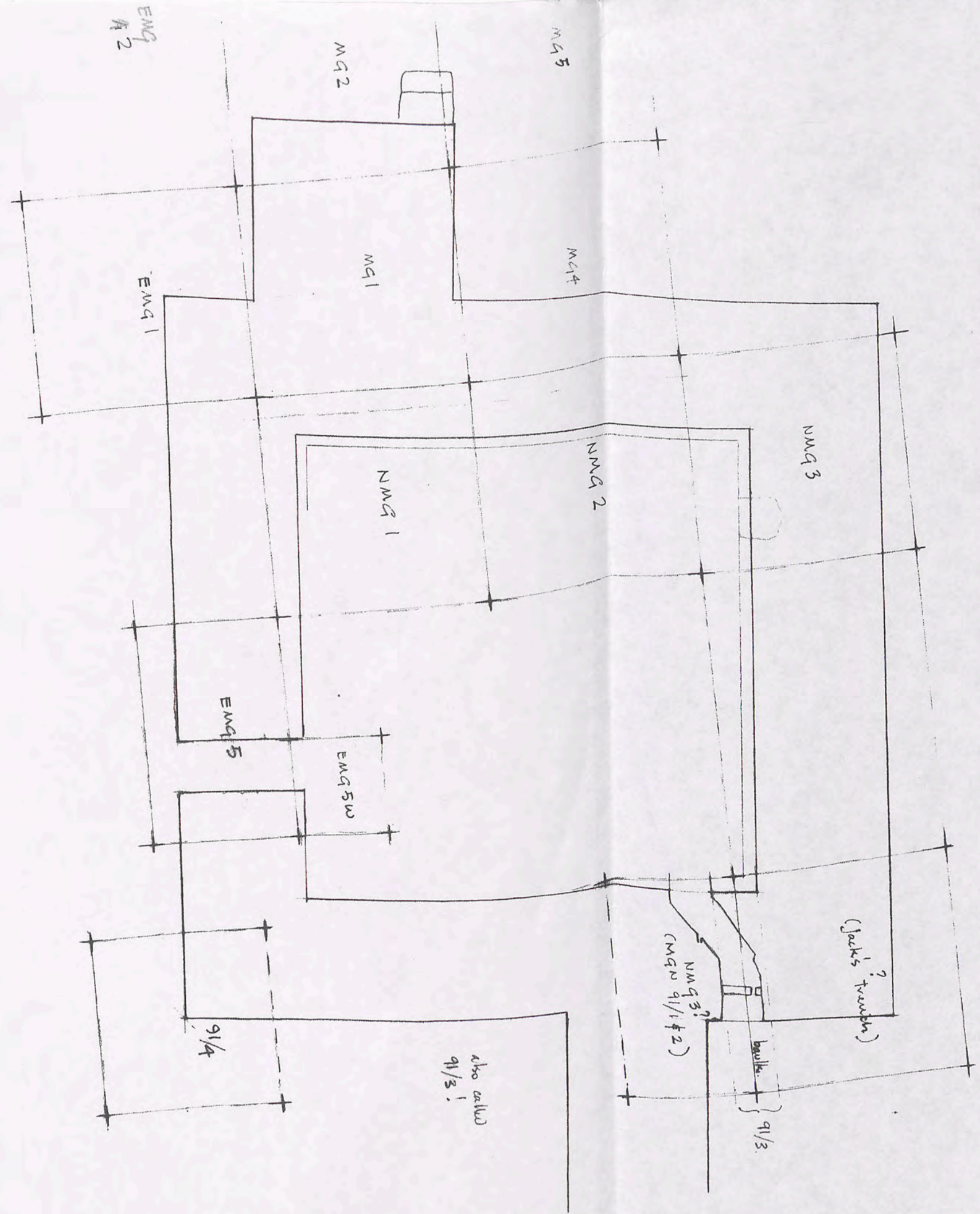
- (1) p 1. M93 - trench pegged out - 23-5-88.
drawing shows M93-M92-M91.
- (2) 2 - " points of elevation above sea level " "
- (3) 3 - " pottery
- (3) 4 - " begins excavation - 24-5-88
- (4) 5 - " 25-5-88
- (5) 6 - M93 - refers to M91 - drawings - "
- (6) 7 - " plan "
- (7) 8 - " 26-5-88
- (8) 9 - " "
- (9) 10 - " "
- (10) 11 - " photos Roll 3-14+ plan - 28-5-88
- 29-5-88
- (11) 12 - " "
- (12) 13 - " 30-5-88
- (13) 14 - M93 M96 - trench opened
- (14) 15 - M96 -
- (15) 16 - " - 1-6-88
- (16) 17 - " 2-6-88
- (17) 18 - M92 + M93 - plan
- 19 - M96. pottery
- (18) 20 - M93
M96 4-6-88
- (19) 21 - M93 + M96 -
- (20) 22 - " "
- 23 - " Pottery
- (21) 24 - M96 + M93. 5-6-88 Coin found
- (22) 25 - M93 - plan location of coin
- (23) 26 - M96 - points of elevation - 6-6-88
- (24) 27 - M93 - lows [a] = "plaster" floor
- (25) 28 - " - plaster = mortar joint. photos Roll 6. 1-5
Addendum 11-6-88 - "plaster" = mortar joints.
- (26) 29 - " - "Elevations" (levels) shown on plan
- (27) 30 - M96 - " " " " " " see also p 33 of Anna's Report.
- (28) 31 - SM91 - new trench opened 7-6-88 5x5 trench.
- 32 - " finds. "
- 33 - " " "
- (29) 34 - " plan of all trenches showing stone blocks = insitu? "
- (30) 35 - " Discussion on plan (above) & possibilities "
- 36 - " Pottery "
- (31) 37 - " 8-6-88
- (32) 38 - " plan of coin (p37) position. "
- 39 - " Pottery "
- (33) 40 - " 9-6-88
- 41 - " Pottery "
- (34) 42 - " "plaster" and finds. 11-6-88
- 43 - " Pottery "
- (35) 44 - " 12-6-88
- 45 - M96 Pottery "
- SM91
- (36) 46 - (SM91) } unmeasurable! 13-6-88
- (M96) }
- 47 - SM91 Pottery "
- (37) 48 - " "



- 49	SMG1	Pottery	(date 11-6-88)
(38) 50	"	"	-
51	"	"	-
(39) 52	"	discussion re stones	15-6-88
(40) 53	"	"	"
- 54	"	Pottery	"
(41) 55	"	elevations (levels) - see p 52 Anna Annows report	"
- 56	"	Pottery	"
42) 57	"	"	16-6-88
- 58	"	Pottery	"
- 59	" ?	Continued	"
- 60	mq3	Locs list	"
- 61	mq6 SMG1	" " Description	-
- 62	mq3 mq6 SMG1 mq6	Pottery list	-

JEBEL KHALID · MAIN GATE · TRENCH LAYOUT SCALE 1





2



STAD MIAA - WIND CATE

STAD MIAA - WIND CATE