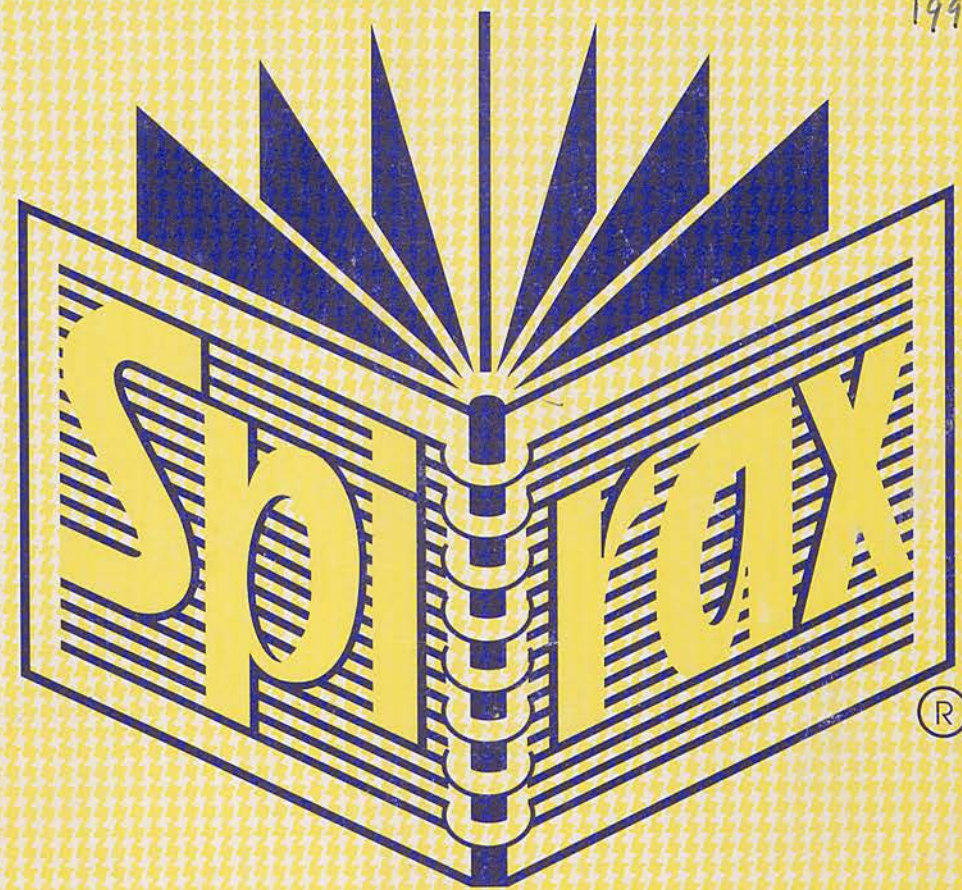


1991

1991



A4 NOTE BOOK

No. 595

HEATHER JACKSON
JEBEL KHALID '91 BOOK (2)

STOA



9 312828 005954

26/9/91

JEBEL KHALID

1991 season

Heather Jackson

Book 2 beginning with pottery from 25/9/91
(Notes for work on 25/9/91 in Book 1)

No Pottery from 392/5 (1)
One object: coin

25/9/91

Pottery from 363/1
(Bank clearing & NE corner)

25/9/91.

Object: Figurine with animal (bull?) legs - ? 2 fragments

Pottery

Body sherds - large amount, mainly coarseware
Large amount of fragments of tile, bagged separately
within main bag

Diagnostics

- 9 burnt body sherds
- 2 body sherds red-painted ware
- 1 body sherd with complete handle attached - large water pot
- 1 " " greenish colour
- 1 "stopped"?
- 1 black? lug or leg of unguentarium?
- 1 rim sherd large bowl - reddish brown decoration on rim and stripes on interior
- 1 rim sherd
- 1 moulded rim - large clay vessel
- 1 " " " " " "
- 2 rim sherd - ledge exterior, incised line
- 1 " " shallow eckinus bowl / plate
- 1 " " plain, burnt
- 1 " " flared exterior - large vessel / pot
- 1 ? rim? base sherd much damaged.
- 3 body sherds red-painted ware
- 1 handle fragment
- 1 base fragment - rim base fragment small bowl.

26/6/91

No pottery, no objects.

Object: ~~fragments~~

Object: coin.

26 SEPTEMBER (THURSDAY) '91

392/5 (1)

Weather: cool, breezy.

Workers: Hasein

A'da (Hamid's mum)

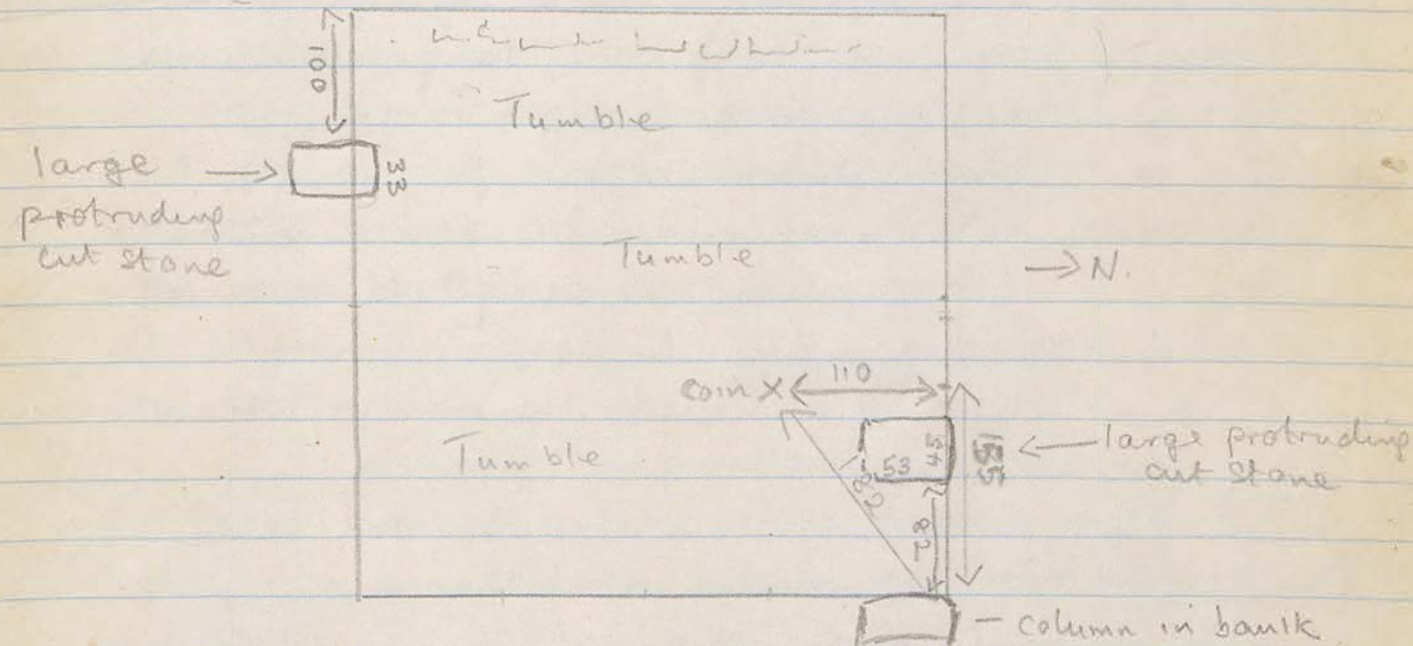
A'dle

Helge

Ftema (Aziza's sister).

6.15. Continuing clearing soil around rocks / tumble ready for photograph.

6.30. Coin found in soil 25 cm below surface level lodged under a large stone.



7-8. Clearing proceeds over whole area.

8.45. Photographed by P.C.
Roll Tc, 2-6.

Began shifting rocks.

9.30 am. Stratum 2 - Tumble. (There was no pottery today from (1)).

Shifting large rocks, taking care near

392/5. (2)

26/9/91

possible walls which may line up with large protruding stones and wall in adjacent trench

1. base of wall - large concrete structure
 2. base of wall - red-painted wall
 3. tile fragments - large amount
 4. small amount of body sherds
 5. large fragment of pottery
 6. large fragment of pottery
 7. large fragment of pottery
 8. large fragment of pottery
 9. large fragment of pottery
 10. large fragment of pottery
 11. large fragment of pottery
 12. large fragment of pottery
 13. large fragment of pottery
 14. large fragment of pottery
 15. large fragment of pottery
 16. large fragment of pottery
 17. large fragment of pottery
 18. large fragment of pottery
 19. large fragment of pottery
 20. large fragment of pottery
 21. large fragment of pottery
 22. large fragment of pottery
 23. large fragment of pottery
 24. large fragment of pottery
 25. large fragment of pottery
 26. large fragment of pottery
 27. large fragment of pottery
 28. large fragment of pottery
 29. large fragment of pottery
 30. large fragment of pottery
 31. large fragment of pottery
 32. large fragment of pottery
 33. large fragment of pottery
 34. large fragment of pottery
 35. large fragment of pottery
 36. large fragment of pottery
 37. large fragment of pottery
 38. large fragment of pottery
 39. large fragment of pottery
 40. large fragment of pottery
 41. large fragment of pottery
 42. large fragment of pottery
 43. large fragment of pottery
 44. large fragment of pottery
 45. large fragment of pottery
 46. large fragment of pottery
 47. large fragment of pottery
 48. large fragment of pottery
 49. large fragment of pottery
 50. large fragment of pottery
 51. large fragment of pottery
 52. large fragment of pottery
 53. large fragment of pottery
 54. large fragment of pottery
 55. large fragment of pottery
 56. large fragment of pottery
 57. large fragment of pottery
 58. large fragment of pottery
 59. large fragment of pottery
 60. large fragment of pottery
 61. large fragment of pottery
 62. large fragment of pottery
 63. large fragment of pottery
 64. large fragment of pottery
 65. large fragment of pottery
 66. large fragment of pottery
 67. large fragment of pottery
 68. large fragment of pottery
 69. large fragment of pottery
 70. large fragment of pottery
 71. large fragment of pottery
 72. large fragment of pottery
 73. large fragment of pottery
 74. large fragment of pottery
 75. large fragment of pottery
 76. large fragment of pottery
 77. large fragment of pottery
 78. large fragment of pottery
 79. large fragment of pottery
 80. large fragment of pottery
 81. large fragment of pottery
 82. large fragment of pottery
 83. large fragment of pottery
 84. large fragment of pottery
 85. large fragment of pottery
 86. large fragment of pottery
 87. large fragment of pottery
 88. large fragment of pottery
 89. large fragment of pottery
 90. large fragment of pottery
 91. large fragment of pottery
 92. large fragment of pottery
 93. large fragment of pottery
 94. large fragment of pottery
 95. large fragment of pottery
 96. large fragment of pottery
 97. large fragment of pottery
 98. large fragment of pottery
 99. large fragment of pottery
 100. large fragment of pottery



1 bag pottery W (5) ✓
 1 bag pottery E (3) ✓
 Objects: 1) lamp fragment
 2) bead

26/9/91

Bag E (3)

Substantial amount of body sherds.
 Large number (approx 15) roof tile fragments, separate

Diagnosics

- 89 burnt body sherds
- 2 body sherds black-painted ware, 1 thick, 1 thin
- 1 amphora toe
- 1 body sherd, curved for neck of flask? (or toe of amphora)
- 1 base fragment, ring base, large coarseware vessel
- 1 rim sherd - exterior ledge, large " "
- 2 " " flared exterior " " "
- 2 " " eclinus 1? black/burnt, 1 plain?
- 1 " " plain - slightly flared terracotta
- 1 handle fragment, burnt
- 1 rim sherd - moulded - large coarseware vessel



Bag W (5)

Small amount body sherds
 3 tile fragments bagged with above

Diagnosics

- 2 burnt body sherds
- 2? body sherds red-painted ware
- 1 plate rim fragment - incised line on interior
- 1 rim fragment - flared exterior, plain coarseware
- 1 " " exterior moulded, " "
- 1 base " , ring base, large coarseware shallow pot
- 1 " " " " shallow dish.

26 SEPTEMBER '91 (THURSDAY)

363/1

Weather: cool, breezy at first

Workers: Douma & crew with Amuna replaced by Hamēdi (walad).

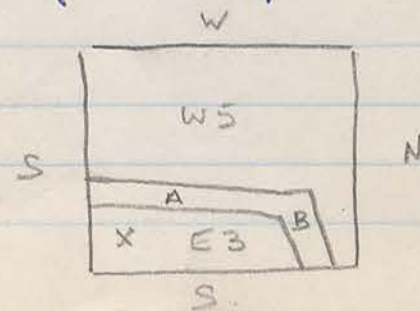
6.15 a.m. Removing large stones from SW corner. Below this there seem to be more. No sign of a floor. Corner of walls A + B clearly defined by yesterday's excavation of N.E. corner.

7.30 a.m. Large stones removed - surface depth now 110 cm but no floor - uneven patches of very hard-packed soil (not at all level) and patches of softer soil. Douma is reluctant to proceed with this section as she is adamant that it is outside a room? Floor level in adjacent trench 363/2 is approx 130 cm i.e. lower than we are in W (5).

8.00 a.m. We have compromised by leaving W (5) for later consideration after dealing with E (3) today - a small area where progress should be quicker.

9.30. E (3) not yielding much in the way of pottery. South wall A appears to be in quite good condition.

10.30 a.m. Fragment of lamp? with moulded decoration found in E (3) at depth of 55 cm from surface of bank at southern end.

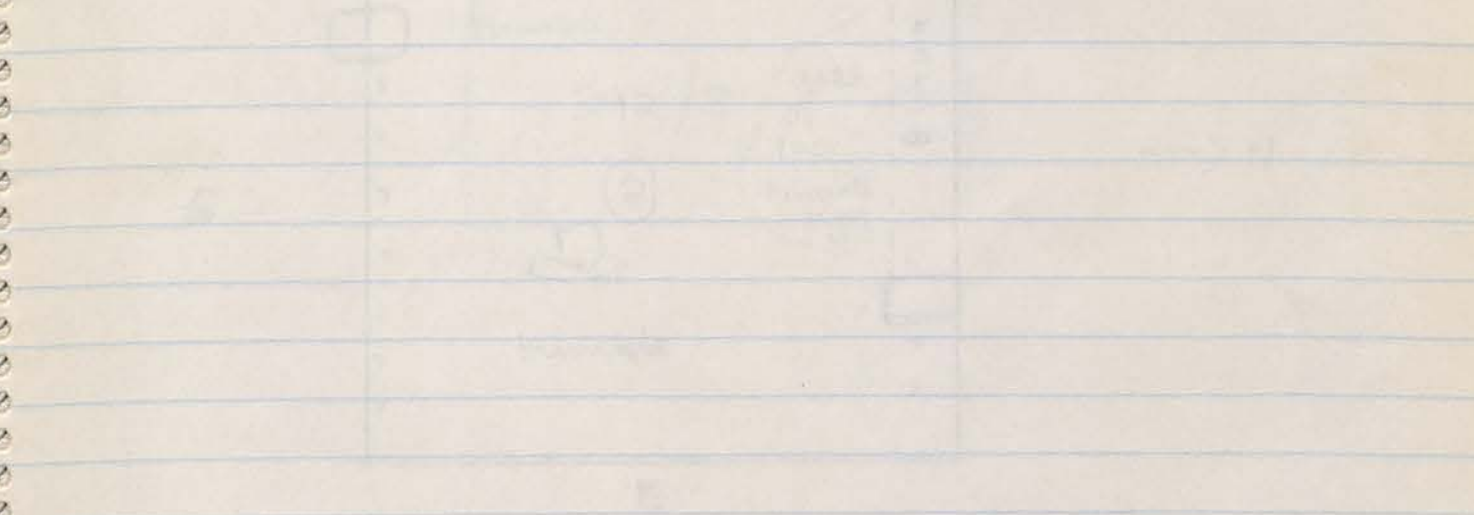


11.15 am. ? Bead? found at 63 cm depth in same location. "Bead" has two holes in it.

Depth excavated from surface of E (3) at 11.50 am. was 67 cm.

Depth of presumed floor in adjacent trench is 87 cm.

- 1. 10 cm of soil
- 2. 10 cm of soil
- 3. 10 cm of soil
- 4. 10 cm of soil
- 5. 10 cm of soil
- 6. 10 cm of soil
- 7. 10 cm of soil
- 8. 10 cm of soil
- 9. 10 cm of soil
- 10. 10 cm of soil



E/w wall very much thicker and of good quality (as far as rubble walls go). Very little pottery in the strata.

N/S wall (wall A) and E/w wall as far as large things were quite clear (wall A). Signs of a c/w wall also on southern side.

28/9/91

392/5 (2)

1 bag pottery ✓

Few body sherds.

4 fragments roof tile

Diagnosics

- 1 eburnis rim sherd - traces of red and black paint
- 1 " " " red paint one side
- 1 plain " " slender open vessel (incised line)
- 1 eburnis " " red exterior, interior black/brown stripe
- 1 rim sherd - exterior ledge - coarseware open vessel
- 1 " " shallow bowl
- 1 body sherd - red-painted ware, both sides
- 1 " " - black both sides - lines?
- 1 " bottle stopper"

28 SEPTEMBER (SATURDAY)

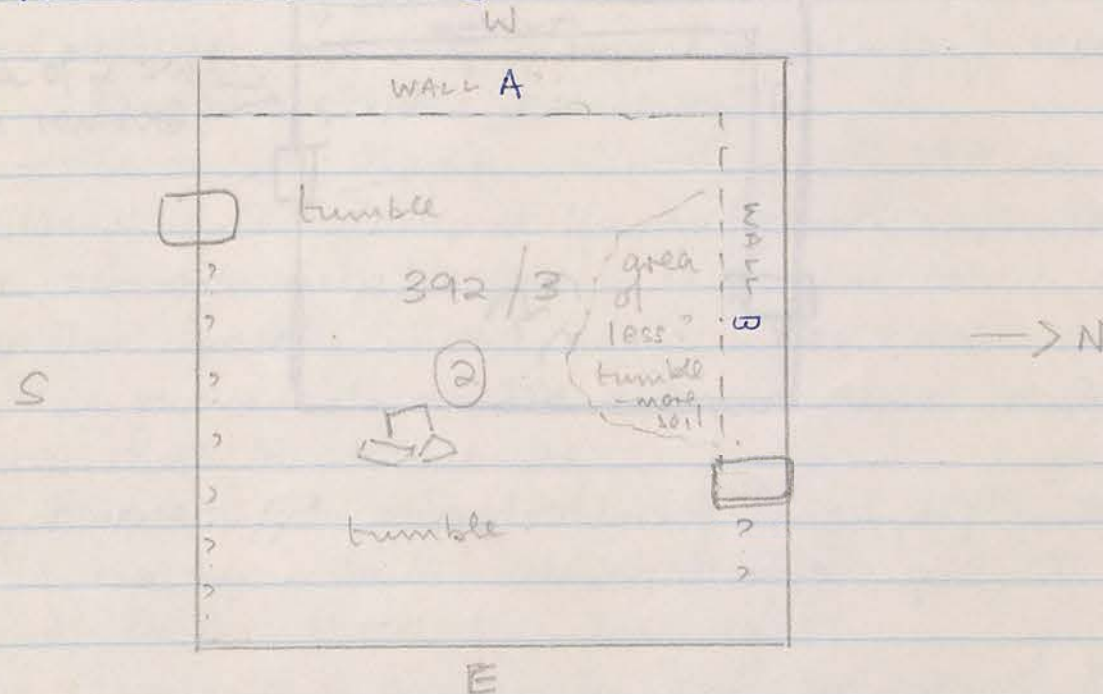
392/5^{5?}

weather cold first

- Workers:
- Husein
 - Aida (Hamid)
 - Adel
 - Helge
 - Ferna

Sun only just above the horizon - good silhouettes but no workers until 6.15 am.

6.15 am. Began work on remaining tumble and soil in (2). Walls look fairly clear along western and northern bank but we shall see.



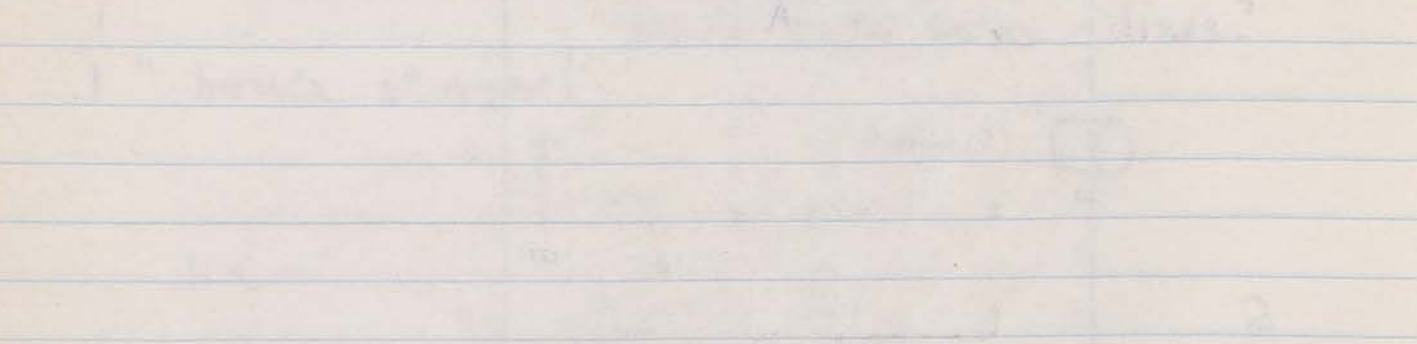
7.45. E/w wall very much clearer and of good quality (as far as rubble walls go!)
Very little pottery in this stratum.

8.45. N/S wall (wall A) and E/w wall as far as large stone now quite clear (wall B).
Signs of a ~~N/S~~^{E/W} wall also on southern side.

28/9/91 (MAGGON) ...

Very little pottery from this stratum.
No bone

12.30 p.m. In NW. corner excavated ~~to~~ 50cm from surface. Not quite finished (2). There are some large stones at eastern end which I am reluctant to move just yet.



10.30 Groping very carefully but no sign of floor at expected depth. Area is so small that fragments of pottery will be few and far between.

11.00 A small area of hard soil at eastern end. Very little pottery in this stratum.

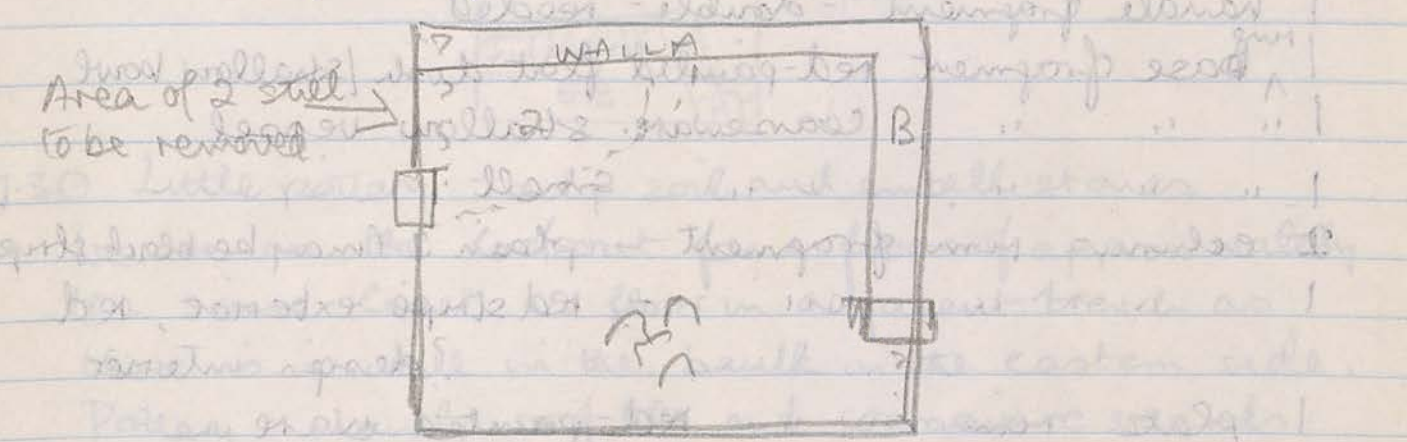
28/9/91 ...

28/9/91 (MAGGON) ... 392/5

There is another layer of tumble below this, by the look of it: we may finish (2) by the end of today.

Very little pottery from this stratum.
No bone

12.30 p.m. In NW. corner excavated ~~to~~ 50cm from surface. Not quite finished (2). There are some large stones at eastern end which I am reluctant to move just yet.



10.30 Groping very carefully but no sign of floor at expected depth. Area is so small that fragments of pottery will be few and far between.

11.00 A small area of hard soil at eastern end. Very little pottery in this stratum.

28/9/91 ...

E(3) 363/1

28/9/91

2 bags roof tile ✓✓

1 bag pottery ✓

1 bone

Pottery E(3)

Very small amount body sherds

Diagnostics

4 burnt body sherds

1 body sherd red-painted ware (both sides)

2 " " " " (one side only)

1 piece tile - greenish colour

1 handle fragment - double-needled

1 ^{ring} base fragment red-painted flat dish/shallow bowl

1 " " " coarseware shallow vessel

1 " " " " small "

2 eclunus rim fragment - plain? (may be black stripe)

1 " " " " - red stripe exterior, red ? design interior

1 plate rim " red-painted ware

1 plain " slender? bowl - red interior

1 rim fragment, flared exterior ↷ terracotta, burnt, signs of red paint

Roof tile

Bag 1: reddish terracotta roof tile fragments
- large amount including profiles etc

Diagnostics: 2 fragments with incised curved marking on back. C = sigma.

Bag 2: greenish tile - slenderer than red.
- approx 12 large fragments.

28 SEPTEMBER (SATURDAY)

363/1

Workers: No Douma! Ali instead (a small walad)

Otherwise: Abed

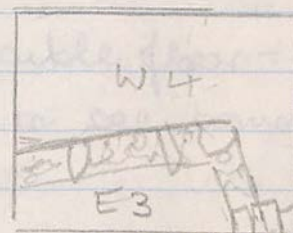
Ftama

Amuna

Hassan

Tedwa (mother)

6.15. Continuing work on E(3).



7.30 Little pottery - only soil and small stones

We are on the lookout for a floor of approximately the same level as floor in adjacent trench as there is no wall in the bank on the eastern side.

Pottery - mainly roof tile and coarseware sherds.

8.30 Tremendous amount of roof tile at depth of 78cm.

All resting in fairly loose soil. Since roof tile often lands on the floor, this may be it

10.30. Going very carefully but no sign of floor at expected depth. Area is so small that

I am afraid that the floor may not be clear, since soil at base beside walls is often softer than the rest of the floor:

11.00 am. A small area of hard soil at northern end of trench may be the remains of the floor. The rest of the locus is full of large stones and soft soil.

29/9/91

1 bag pottery ✓

392/5

(3)

Diagnostics

10 burnt body sherds.

3 body sherds red-painted ware, 2 thick, 1 thin.

2 " " traces of red and black/brown decoration

(one has definite broad stripe + narrow stripe)

1 handle attachment to body sherd of large clay vessel

1 base fragment (rim base) of large terracotta vessel)

1 " " (string cut) of small " "

1 rim fragment } - black-painted - shallow open vessel - 2 moulded lines exterior

1 " " red-painted ware, plate, incised lines interior

1 rim fragment shallow eclunus bowl.

1 " " plain flared exterior, coarseware, slender

1 " " eclunus - red-painted both sides

1 " " black " "

1 " " red interior, brown striped exterior

1 " " plain, ~~brown~~ brown/black interior

1 plain rim fragment open vessel (? eclunus?)

1 rim base fragment large vessel - traces of red-paint decoration

29 SEPTEMBER (SUNDAY)

392/5

Weather: very pleasant at first, no wind, will be hot later.

Workers: Abu Hamid

Husein

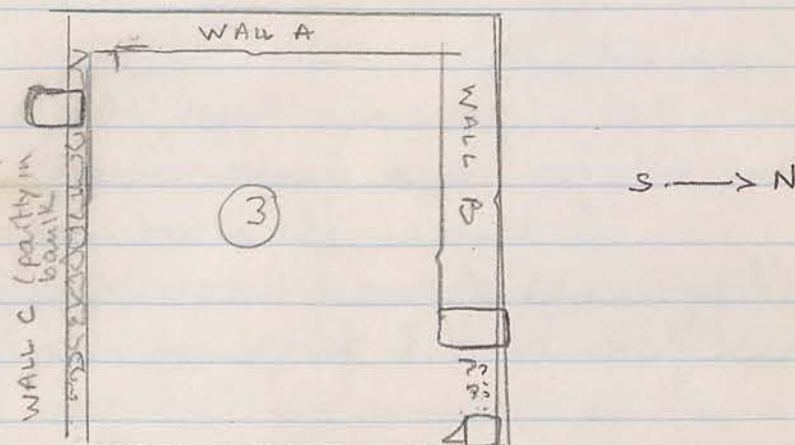
Ad'le

Helpe

Azisa

Fkema

6.15. Levelling off to (2). Wall on southern boundary of trench now very clear.



7.00am. Corner of wall C and wall A now cleared (in S.W. corner). Much more soil (brown) than in (2).

8.00. Proceeding slowly towards northern end removing some large stones and a great deal of soil - still a rich brown. Very little pottery, some roof tile.

9.00 Wall A and wall B corner reached - very nice sharp corner of good quality rubble wall.

10.30. No good trying to hurry these workers - they refuse to work more than their routine they are used to! Progress is very slow. Excavation at N.W. corner 70 cm from surface (this is the highest surface level point).

2/085

363/1

29/9/91

1 bag pottery E (4) ✓

1 bag W (4) ✓

1 bone.

Pottery: Mainly roof tile - reddish thick terracotta
approx 22 fragments.
Few body sherds.

Diagnostics

1 burnt body sherd

4 body sherds - thin fabric with red/black decoration
or discoloration

1 rim fragment }
3 " " } eclunus bowl/shallow dish with
red rim exterior and darker interior

1 " " thicker plain eclunus shape

2 base fragments of small terracotta vessel

1 handle fragment (2/3 large vessel) attached to
body sherd.

29th SEPTEMBER (SUNDAY) 11 EJE

363/1

E (4)

Douma is back with full crew.

6.15. Area of hard-packed floor at northern end
(only 50 cm in length did not extend to the rest of
the trench. I am sure that's where the ^{upper} floor was
but it certainly is not there now except in that corner.
We will excavate further to next floor or base of
wall. This is E (4).

7.30. We appear to have reached the base of the
wall at 130 cm approx depth in S.E. corner!
Cleaning up walls and base of wall, to confirm
this.

8.30 a.m. Small circular area of charcoal in southern
end of E (4). Trowelling under wall makes me
uncertain that we have reached the base (Douma
wants to!) so we will excavate a little further
to make sure.

9.45 a.m.

Certainly wall B finishes at the level of the
presumed floor. Not so sure about wall A. There is
a layer of smaller stones in some places, but not in
others. Wall B could be a later addition? Seems to
have been built at the same time.

11.00 a.m.

Clearing soil + rubble from base of trench.
When this is done I will transfer workers to
W (4) to level it out and ~~st~~ remove large rocks.

See observations on next page about E (4).

363/1 29/9/91

Bay W (4)

11 fragments roof tile

1 diagnostic - eclunus rim shed - brown rim.

363/1

363/1

12.00 noon Working on W (5) again.
Stones in the middle of this section quite different from the tumble and rocks in a "room" trench. They are not wall stones (except tumble in S.W. corner and came up against northern bank)

(Note: while travelling in E (4) found a ~~large~~ moderate amount of charcoal under southern bank - this makes me wonder!)

Observations on E (4)

The wall B definitely ends at depth of 106cm. (depth base of large stone in wall. Beneath this is only soil and small stones)

Wall A at same depth (approx 106 cm.) has a layer of soil and small stones for at least 15 cm all the way along. Below that (to the depth excavated) ^{approx 130 cm} there are some larger stones, but these are not uniform or straightened.



In the eastern bank there is a clear top layer of soil (with a few larger stones) to a depth of approx 102 cm, then a layer of what looks like "fill", composed of rough stones packed in soil randomly. At 125 cm there may be a very thin layer of limestone but it does not extend the whole length of the bank and may only have been caused by excavating. It could ^{have} been a lower floor than the one at 106 cm which would account for the charcoal at this level?

Photographed by PC Roll 9c 29-36 cm.

30/9/91

1 bag pottery
1 bag roof tile

392/5 (3)

4 objects shaped stone? with worked hole 
(+ ? other end 

2. Complete neck of pot with handles, shoulder.
- narrow neck, incised concentric lines on shoulder behind handle

1 bag pottery

Moderate amount body sherds - mainly coarseware

Diagnosics

10 burnt body sherds

1 body sherd red-painted ware

1 " " - red paint interior?

1 " " red-paint - incised concentric lines

4 handle fragments

1 ? " stopper

1 rounded exterior rim fragment large coarseware vessel

2 eckenis rim fragments - plain

1 " " " - red-paint exterior & interior

3 " " " - black " " "

1 rim fragment  - exterior moulded/flared

1 rim base fragment (complete rim) large terracotta vessel - burnt

1 rim base fragment - red painted ware - thick

1 " " " - small vessel, complete rim, hole cut in centre

1 " " " thick shallow bowl / plate

1 " " " small coarseware shallow dish

2 " " " finer small " " / bowl

1 " " " (tiny) traces of paint exterior

1 base fragment fish plate

30 SEPTEMBER '91

392/5

Weather cool at first, breezy.

Workers: Abu Hamid

Hamid

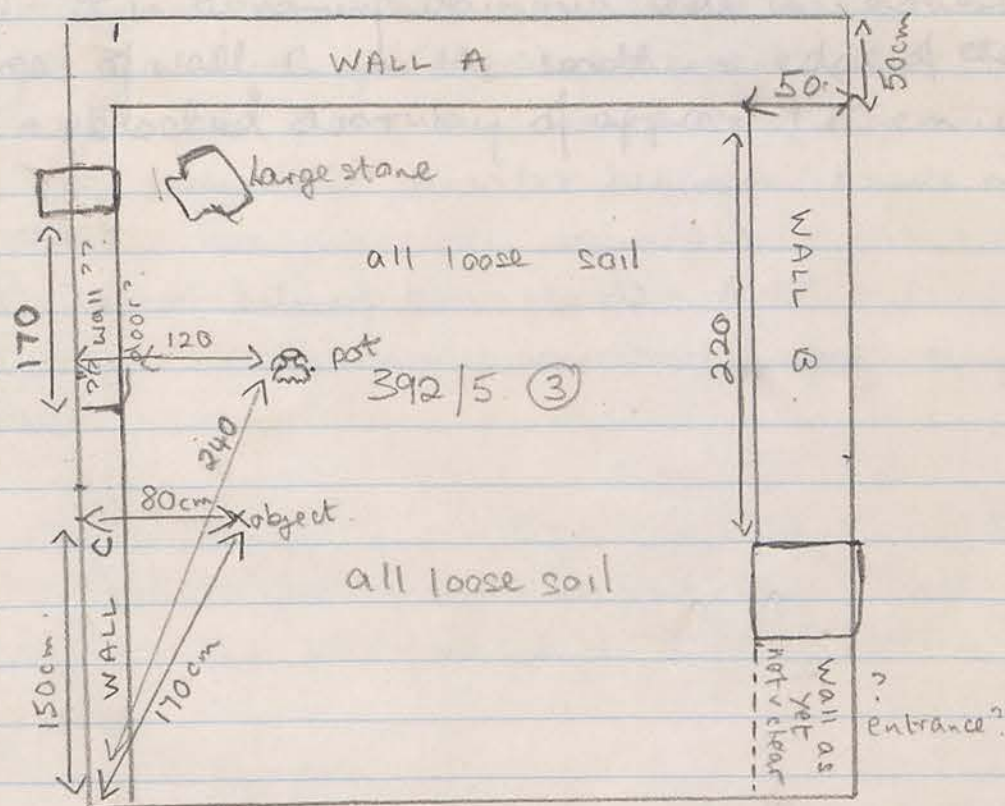
Adle

Helpe

Prema

6.15 a.m. Cleaning down walls along northern and western baulks. Signs of doorway in northern baulk?

Continuing excavation of (3) which is mainly loose brown soil, yielding little pottery.



8.30 a.m. Object found at depth of 45 cm (see diagram) It looks like a worked stone (shape - long and thin like a knife blade) with half a worked hole at one end - broken later another fragment (other end?) found but some still missing.

1 bag roof tile

Approx 26 fragments roof tile - none with markings.
Some corner profiles and edge profiles
Mixture of plain, clayey colour terracotta and red terracotta.

10.45. a.m. Abu Hamid found? neck of pot lying sideways at southern end of trench. It is turning out to be broken round the shoulder (old break) but the full neck is there.



It was found at a depth of ~~10~~ 77 cm. in southern end of trench. See diagram on previous page for exact location.

Since this was the first major find of pottery in this trench, stratum 4 begins here.

12.15 - It is becoming obvious that the doubtful area of wall C, on the southern edge of the trench is a blocked doorway of approx 170 cm width.

*

8.10. Hamid has made the foundation of the wall (5) below kitchen - 17 to 184/19. I believe the wall is a continuation of the wall of the house. It has not been suggested.

8.00. Object - fragment of figure found in NE corner of (5) at depth of 106 cm. It is a fragment of a part of figure found in 2/1/91.

1 ~~bag pottery~~ ^{object} W(5).

1 fragment figurine - object


1 bag pottery

Few body sherds, mixed with roof tile fragments.

Diagnostics

1 Roof tile fragment - profile.

3 body sherds red-painted ware, one burnt.

1 body sherd with red-painted with incised fluting decoration 

1 base sherd of red-painted ware - plain concave base with incised lines in circle on interior, incised decoration interior

1 base sherd - ring base - coarseware vessel

1 body sherd with attached handle fragment.


1 rim sherd + shoulder - moulded exterior rim - large coarseware

2 " " ledge exterior, large coarseware open vessel

1 plain rim ^{sherd} - thick echiurus bowl - terracotta

1 rim sherd: moulded exterior, coarseware

1 " " echiurus

1 " "  - slender red-painted vessel

1 handle fragments coarseware

30 SEPTEMBER '91

363/1

Workers: Douma + crew

6.15 Started work in W(5) at base of wall A to confirm that the wall does end where it appears to end in E(4).

7.00 It does! The wall finishes at a depth of 106 cm. This exactly corresponds to the "floor" (presumed) in E(4) which was very hard to locate except at northern end.

It also corresponds to the line in the eastern bank of soil and stones (see yesterday's observations) and the depth of the floor in 364/7 (excavated last year) behind the Stoa wall.

* 8.10. Having ~~to~~ made the base of wall A + B clear in W(5), have transferred workers to 364/9 where the western focus behind the large worked stones has not been excavated.

* 8.00. Object - fragment of figurine found in N.E corner of W(5) at depth of 106 cm. up against wall. Could be part of figurine found on 25/9/91.

30/9/91

Object: fragment of figurine
1 bag pottery SW 2 (change to 2)

Small amount body sherds, including some greenish fabric
5 fragments roof tile

Diagnosics

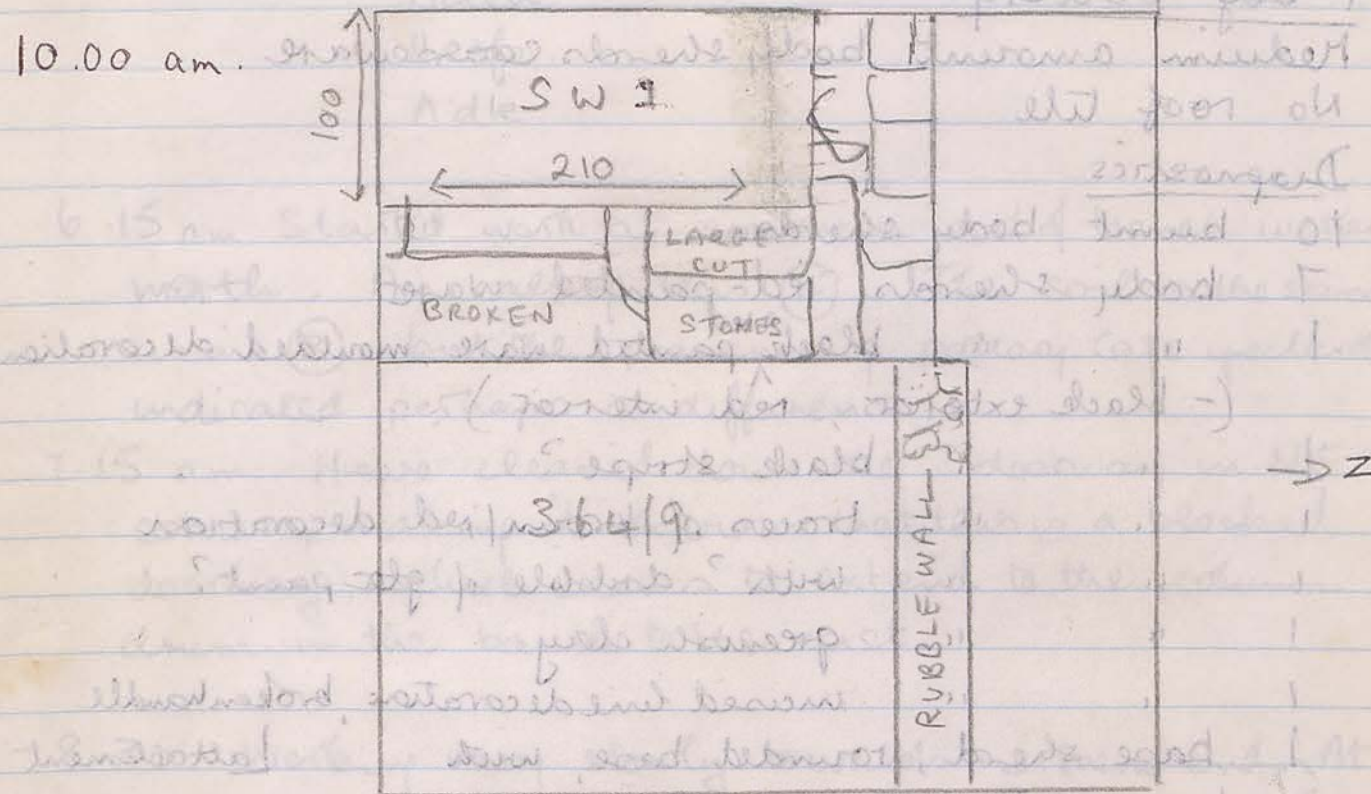
- 3 burnt body sherds.
- 3 body sherds - traces of red paint
- 1 " " - interior gouged lines
- 1 ? handle fragment
- 1 ? stopper.
- 2 rim fragments (degraded) coarseware red vessel
- 3 " " eekinus bowls - red painted
- 1 " " plain open - black painted slender vessel

30/9/91

364/91

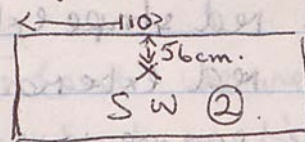
S.W. 2

The western end of this trench behind the large cut stones has not been excavated. It is a small area measuring 100 by 210



Removed some large (but not cut) stones from surface. Underneath is soil mixed with a large amount of limestone clipp from broken stones

12 noon. Object - fragment of figurine in soil at 87cm depth



1/10/91

392/5

(4)

Object: fragments of plaster - painted

1 bag bone

1 bag pottery.

Medium amount body sherds coarseware

No roof tile

Diagnosics

10 burnt body sherds.

7 body sherds red-painted ware

1 " " black^{red} painted ware, moulded decoration
(- black exterior, red interior).

1 " " black stripe?

1 " " traces of brown/red decoration

1 " " with? dribble of ~~glaze~~ paint?

1 " " greenish clay

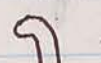
1 " " incised line decoration, broken handle

1 base sherd, rounded base, with attachment
traces of red-paint decoration.

1 base sherd - complete rim base - traces of red-paint.

1 " " rim bases, coarseware.


1 rim sherd red-painted plate/bowl, incised lines^{interior}

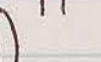
1 " "  - red-painted slender open vessel

1 " " ? burnt

1 " " eclinus red stripe exterior, brown interior

1 " " / " red exterior & interior

1 " "  large coarseware vessel

1 " "  " " " moulded exterior

2 " " ? plain terracotta vessels.

1st OCTOBER '91 (TUESDAY)

392/5

(4)

Weather: cool, breezy, not later.

Workers: Abu Hamid

Aida

Ali

Ariza

Heffe.

A'ide.

6.15 am Started work at southern end of trench working north. Am calling this (4). The soil is the same as in (3) but the presence of pottery late yesterday indicated perhaps a difference.

7.15 am Have cleaned down the ? doorway in NE corner, making it obvious that this is a blocked doorway, which seems to extend to the column drum in the baulk to the east.

8.30 Working very slowly towards northern end. At this rate we won't get round the whole trench today. Excavation at deepest point is now 106 cm.

9.15 am. At this same depth I think we may have found the floor, or at least a section of it. Hard soil, traces of charcoal.

10.50 am. At last we've reached the northern end. Work is slow but meticulous. The floor is still firm except up against the wall in N.W corner, which often happens.

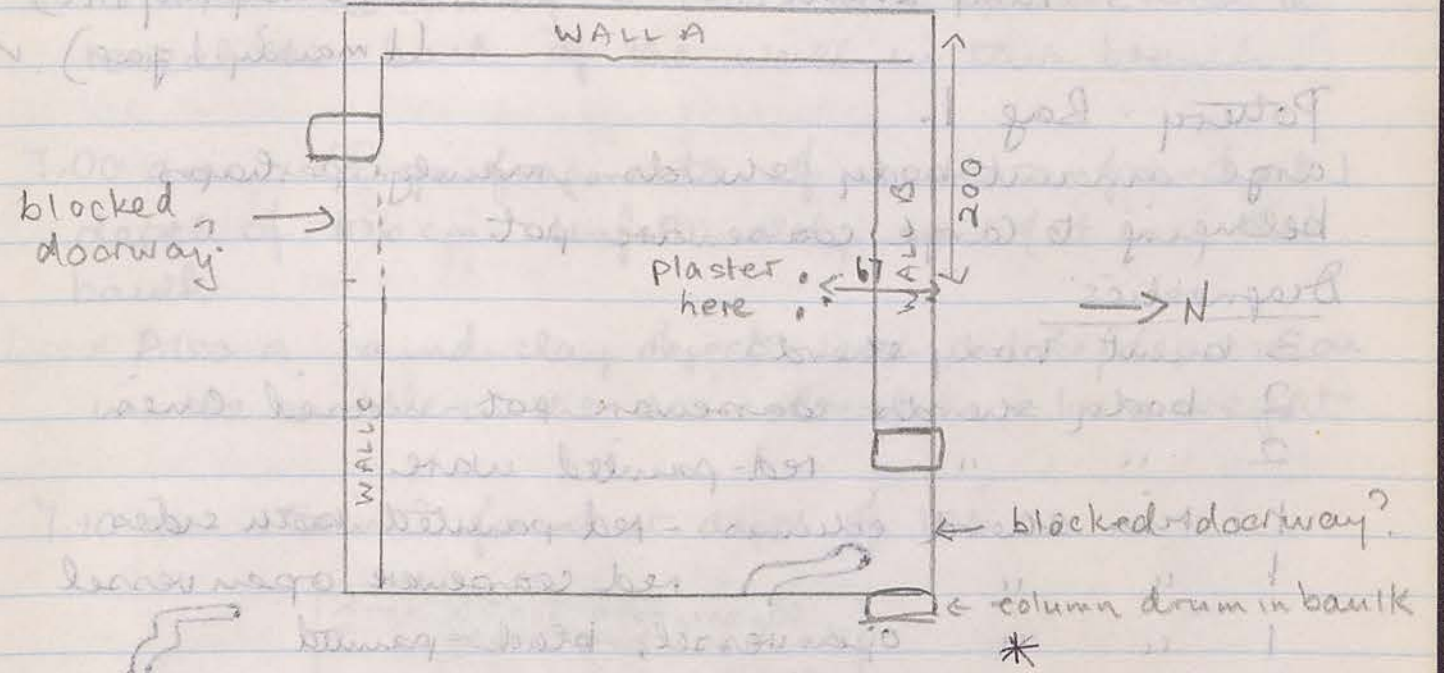
12.10 pm. Fragments of painted plaster are beginning to turn up - four so far. They are small but clearly coloured reddish/pink.

1/10/91

392/5

(4)

They were found at a depth of 103 cm (level of presumed floor) from surface.



Pattern Rag 3
 large amount of small pieces of pottery
 found - mostly broken fragments in one or two large pots
 (not far away is water table water)
 How much of the pottery is broken?
 2 large handle fragments, sherd fragments, etc.
 handles complete & attached to body sherds
 3 base fragments including 2 whole complete rim base
 fragments, several rim base fragments, etc.
 2 small rim base - not clearly different rim base
 fragments
 - base rim base -
 - top rim base, including 1 large pot
 9.50 - the rim base being sherd fragments at depth
 of 153 cm from surface at 5.11 corner.

1/10/91

364/9

Objects

- 1. coin
- 2 3 loom weights
- 3. lamp sherd

1 bag bone

Pottery

- 4 bags from SW (B)
- (1 mainly roof tile) ✓
- (1 mainly 1 jar) ✓

Pottery Bag 1.

Large amount body sherds, mainly perhaps belonging to large coarseware pot

Diagnostics

- 3 burnt body sherds.
- 2 body sherds coarseware pot - mused lines
- 2 " " red-painted ware
- 1 rim sherd edimus - red-painted both sides.
- 1 " " red coarseware open vessel
- 1 " " open vessel, black-painted
- 1 base sherd - rim base - black-painted ware - large shallow bowl/vessel.

Pottery Bag 2.

Large amount large body sherds of terracotta vessel - may belong together in one or two large pots (may also be connected with Bag 3 which was collected not far away i.e. within half a metre.)

Diagnostics

- 2 large handle fragments, identical profile + size, both handles complete + attached to body sherds
- 3 base fragments matching to make complete rim base - large vessel
- 2 " " - may belong to different large vessels. - both rim bases.
- 3 rim fragments, matching, of large pot - ~~the~~ rim missing only one fragment.

1st OCTOBER '91 (TUESDAY).

(B) W 2 364/9 SW (3)

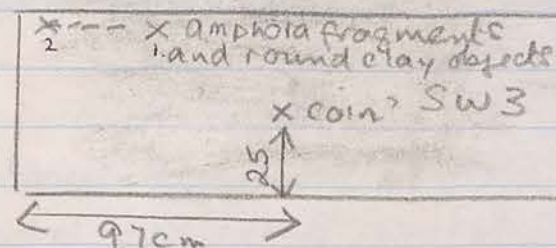
Workers: Douma a crew

6.15 a.m. Continuing to clear this small area to reveal the back of the wall in this trench.

7.00 a.m. Large fragments of amphora found at depth of 106 cm. Unfortunately most of it is in the bank.

Also a round clay object with a hole/depression in the middle in the same location - loom weight

7.10 a.m. Coin? found at depth of 106 cm.



8.10 a.m. lamp sherd (moulded decoration (G)) found in same locus as amphora fragments, also another loom weight, and then another.

Have reached base of large stones which seem to be resting on others which project unevenly at the back.

8.45 a.m. Fragments of another large pot found in corner (S.W) of trench. Have bagged these together

9.50. Have found floor (crushed limestone) at depth of 153 cm from surface at S.W. corner.

364/9 SW (3)

1/10/91

Pottery Bag 3.
 Body sherds from one jar (?) broken in baulk of SW.3. - including:
Diagnostics (of same jar?)
 Base - large ring base fragment
 Rim fragment - moulded exterior 5)
 Body sherd with handle broken off.

All above from large coarseware open necked vessel?

Bag 4: Roof tile only.

1/10/91

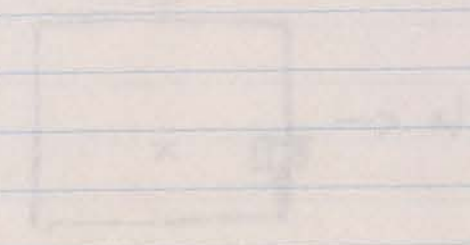
364/9 SW (3)

The large stones/masonry protruding at base of wall are puzzling. Why are they not level with the rest of it? Excavation (? last year) did not go down quite as far as this on the other side of the wall. Presumably they are foundation stones but elsewhere foundation stones are level with wall.

10.15. Cleaned down walls and transferred workers to new trench to the west - 363/3.

9c 22-28

Started work clearing surface soil and stones from 363/3



2/10/91

392/5

(4)

Objects

loom weight
plaster

1 bag pottery ✓

Large amounts body sherds, coarseware, no roof tile

Diagnostics

3 body sherds burnt cookware

10 " " " pottery

2 " " red-painted ware

1 " " black - " "

1 " " mused line decoration, red paint decoration
- large vessel, thick fabric

1 " " greenish colour exterior

1 small river pebble? worked?

1 " stopper"

2 base fragments ring base, small vessel, degraded

1 rim sherd plain exterior flared thin vessel - black? red?

1 " " shallow bowl/plate thin coarseware -
- traces of paint decoration interior

1 rim sherd - eclinus - black paint??

2 " " - reddish clay coarseware.

1 bag roof tile

2 October 1991

392/5

(4)

Weather: cloudy, cool, breezy at first

Workers Abu Hamid

Ali

Aida

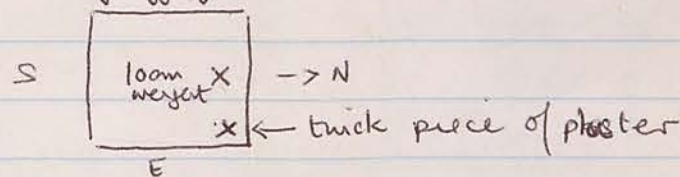
A'dle

Helga

Aziza

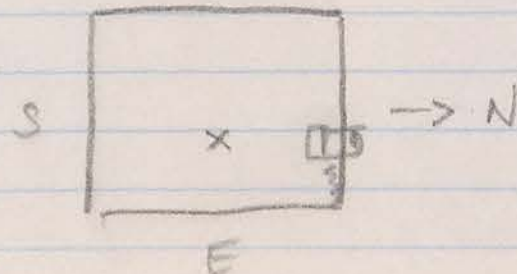
6.15 Continuing to excavate ^{to} floor (presumed) of (4).
Still huge amounts of ¹soil, with few stones and
little pottery.

7.15 Loom weight found in northern section, mid-
trench



7.45: More plaster found - quite large thick
piece, found on "floor" in NE corner. Colour -
pinkish brown with black markings which are
probably just discoloration. This area is near the
blocked doorway in N.E. corner.

8.30. Two more pieces of plaster in the middle of the
soil in the eastern part of the trench. Difficult to
tell the colour, but definitely different from previous
- one may be greeny-blue.



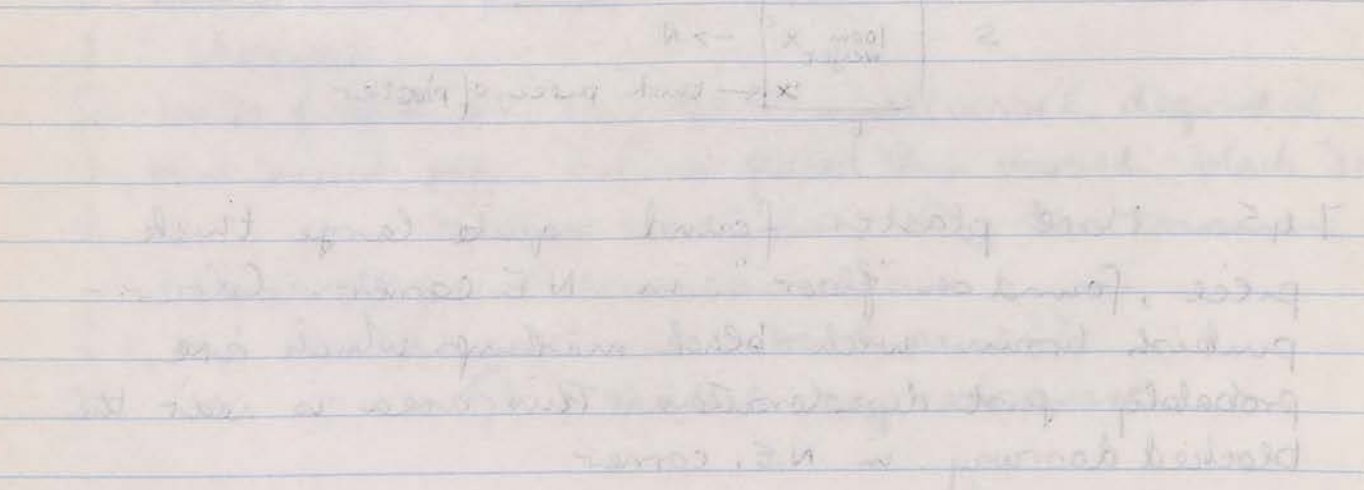
2/10/91

1991

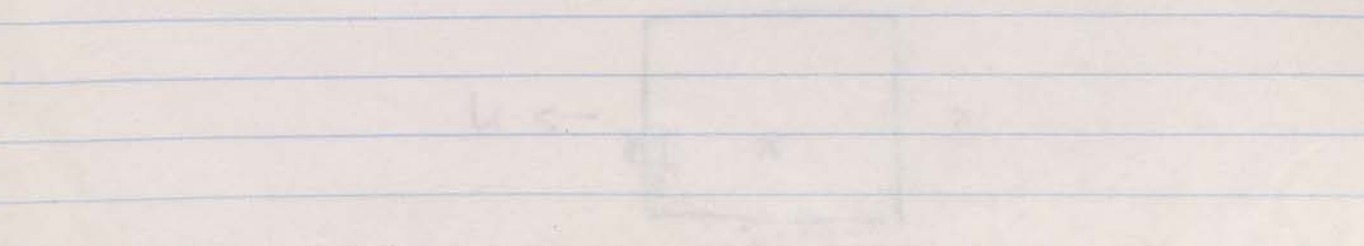
①
 10.00 am. Two more - one definitely a blue, one soil-coloured - needs a wash!

②
 10.20 am. Two adjoining fragments of plaster with greenish/blue colouring - also mid-trench

10.30 am. Two more pieces of plaster in the middle of the trench in the eastern part of the trench. Different from previous - one may be greenish-blue.



10.45. Last remaining wall soil did small clumps on top of rubble near west of trench. Very little pottery. 3 shards! (included in 5/10/91 log)

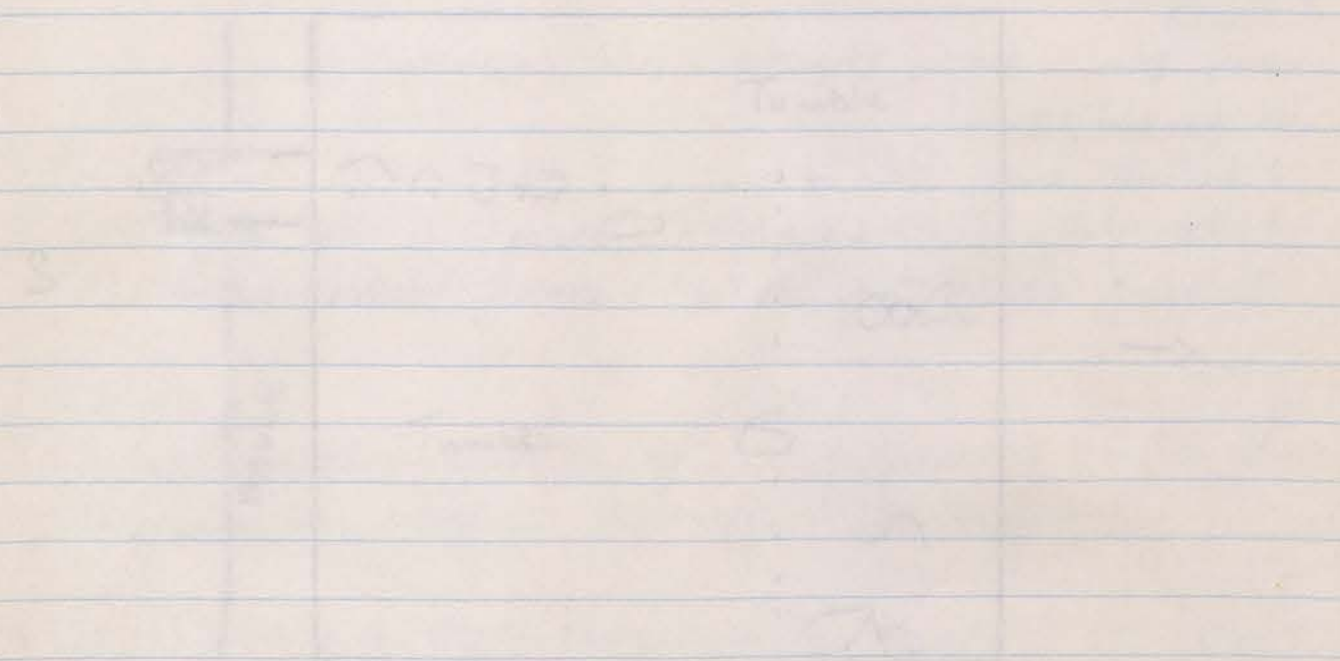


2/10/91

① 392/5 ④

10.00 am. Two more - one definitely a blue, one soil-coloured - needs a wash!

10.20 am. Two adjoining fragments of plaster with greenish/blue colouring - also mid-trench



No major pottery remains. One small fragment of the 5/10 wall in eastern trench is related with this one and the 11/10 wall in the trench to the south. May continue in this trench.

10.45. Last remaining wall soil did small clumps on top of rubble near west of trench. Very little pottery. 3 shards! (included in 5/10/91 log)

363/3 ①

2/10/91

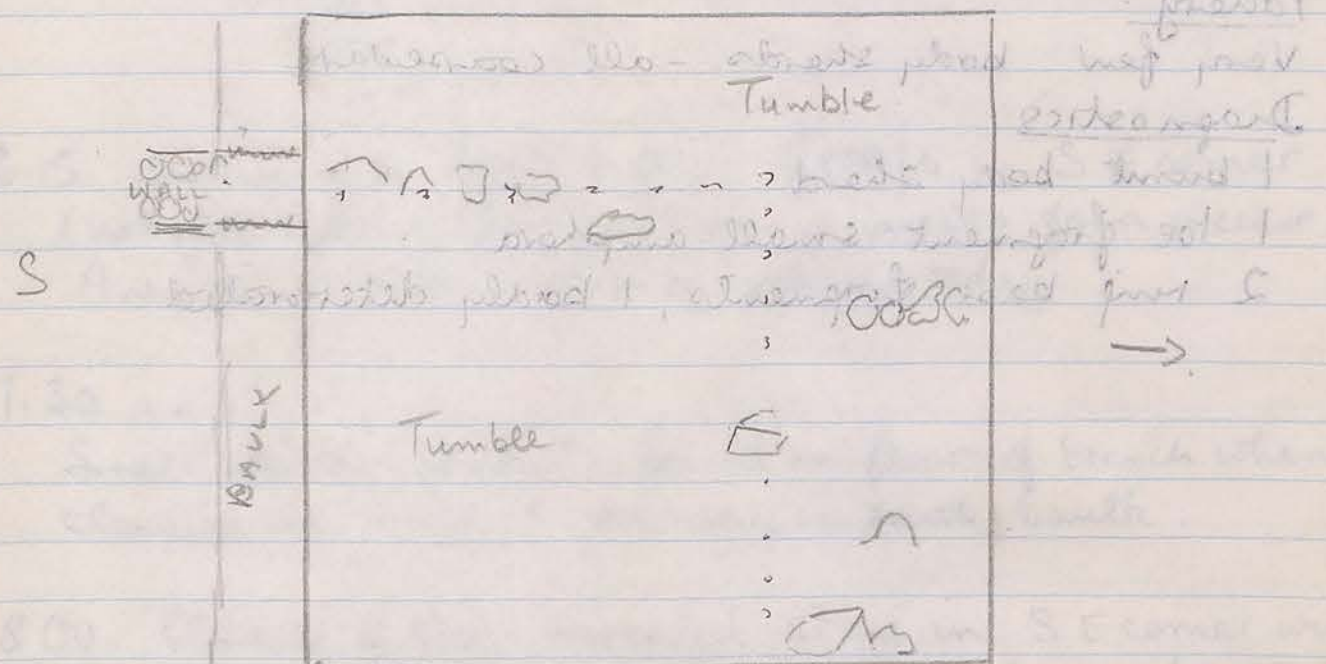
~~1 bag pottery?~~ No pottery from 2/10/91 in 363/3 ①

2nd October 1991

363/3 ①

Workers: Douma & crew.

6.15 p.m. Continuing to remove surface soil and stones ① from this new trench.



No major protruding stones. One might expect the E/W wall in eastern trench to extend into this one, and the N/S wall in the trench to the south may continue in this trench.

9.45. Work continuing. - all soil and small stones on top of tumble over most of trench. Very little pottery. 3 sherds! (included in 5/10/91 Bag)

2 | 392/5 (4)

1991 5/10/91

1 bag pottery ✓

Objects: 1 metal bead?
1 glass fragment } both from sweeping floor.

Pottery:

Very few body sherds - all coarseware

Diagnostics

- 1 burnt body sherd
- 1 toe fragment small amphora
- 2 rim base fragments, 1 badly deteriorated

5th OCTOBER (SUNDAY)

① E | 392/5

Weather - warm, going to be hot. Some cloud.

Workers - Hamid

A'da

Aziza

A'dle

Heffe

6.15. Continuing to clear to floor of 392/5 in SE corner (not yet level), then will clean walls for a picture. A new trench will have to be set out today.

7.30 am.

Small metal bead? found on floor of trench when cleaning by blocked doorway in south baulk.

* 8.00. Cleaning of floor revealed stone in SE corner with rectangular socket hole in it; floor level, base of wall.

8.15 am. Workers transferred to clear stones and soil from 392/4 so that it can be set out by Barrie.

P.C. changed his mind about this - new trench is to be 391/2. 10.11.91 after some prompting, as I recall!

392/5 photographed by P.C.

Roll 11c 1-9.

also Black & white

10.10 am. Workers transferred to 391/2.

*

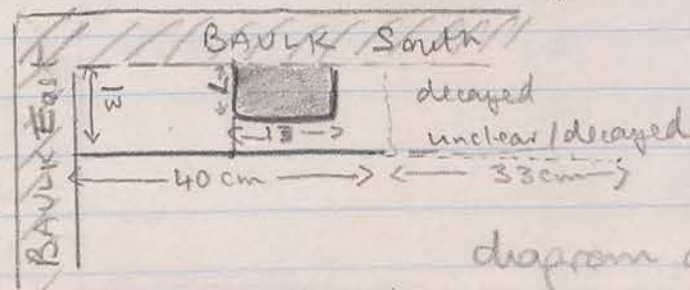


diagram of socket in SE corner

363/3 (1)
1 bag pottery ✓

Few body sherds.

Diagnostics

3 rim sherds - exterior moulding
1 base sherd - rim base - small vessel

5/10/91

5th OCTOBER (SATURDAY)
Weather: warm/hot.

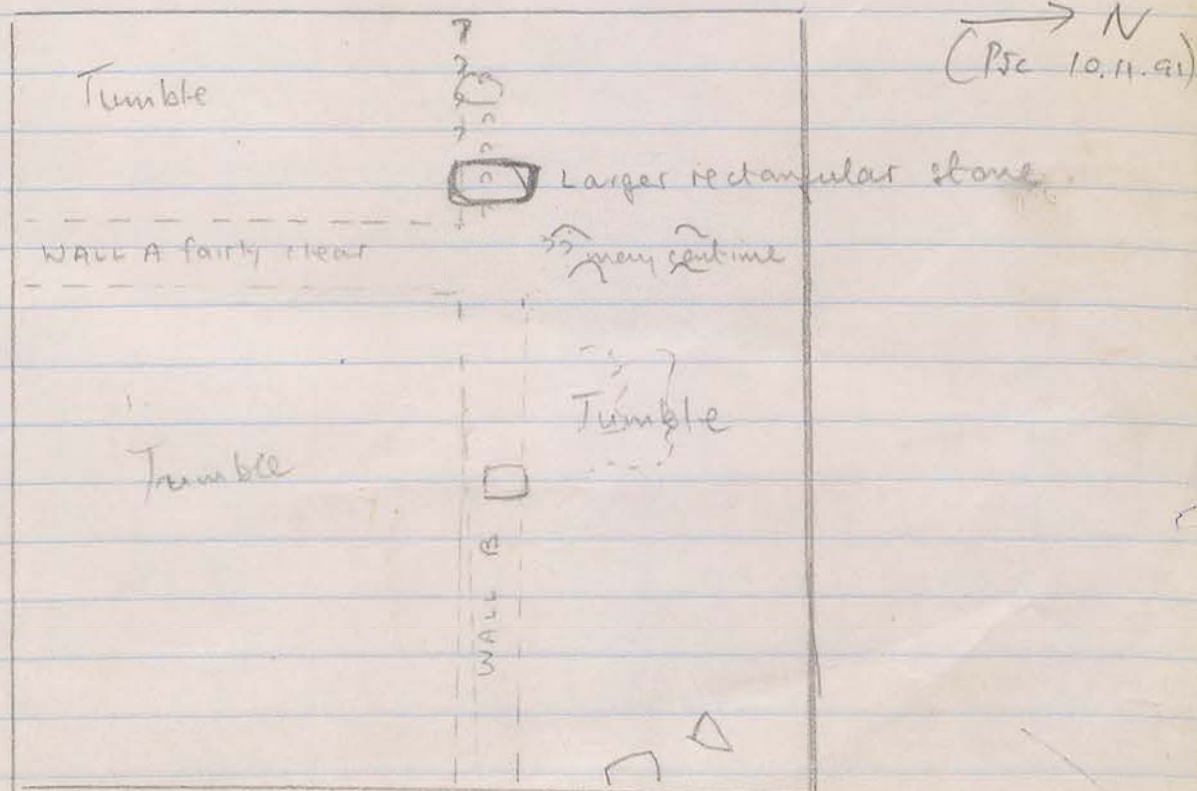
Stoa
363/B (1) 364/1 (1)

Workers: Fedwa
Hassan
Ftema
Salsah
Shamsi
Fethile

6.15. Started work on clearing topsoil and surface rocks from this new trench. Fairly clear already that at least two walls are present - continuation of N/S wall in 363/2 and continuation of E/W wall in 364/9, very little pottery as expected.

8.30. Work continuing mainly on western section of trench. Soil fairly loose and tumble not closely packed together underneath.

9.30



5/10/91

5/10/91

363/3 ① 363/1 ①

9.45 Large rectangular stone at west end of Trench looks interesting but may be just larger tumble. At this stage we are still shovelling away a lot of soil in preparation for clearing the visible tumble & possible walls for a photograph.

10.45 Large rectangular stone seems to extend deeply into the trench - measures approx 63cm x 40cm.

11.20 Working around the tumble - still removing large amounts of loose soil and small stones. Hardly any pottery.

392/1 (1)

6/10/91

10.15 Workers transferred from 392/5 to this trench. Picked the corners and round the perimeter. There are no large protruding stones in this trench. There is an N/S wall in adjacent trench 391/3 which may continue along the western boundary.

11.30 Continuing above. So far no tumble apparent beneath surface soil and stones.

5th OCTOBER 1991

(1) 391/2 391/2 391/3

10.15 Workers transferred from 392/5 to this trench. Picked the corners and round the perimeter. There are no large protruding stones in this trench. There is an N/S wall in adjacent trench 391/3 which may continue along the western boundary.

Starting excavation of surface soil and small stones in N.W. corner.

11.30 Continuing above. So far no tumble apparent beneath surface soil and stones.

7.30 Considerable amount of rubble showing up in northern end of trench. Very little pottery - only those already seen.

8.30 Work stopped by rain.

9.30 Now excavating high topsoil in southern sector of trench. Tumble in northern sector is now quite clear but has no clear pattern. Two people are picking which is making progress a bit faster!

11 am. Work concluded because of rain.

~~363/3~~ 391/2 (1)

6/10/91

No pottery, no objects. A few sherds included in 7/10/91 bag.

6th OCTOBER (SUNDAY)

~~391/2~~ ^{see 7 Oct.} 391/2 (1) 11

Weather: black clouds, drops of rain. Work delayed at least 30 minutes while we waited at Abu Galgal for rain to clear. On the Jebel, only a little rain has fallen.

6.45 am. Workers. Abu Hamid
Ali
A'da
A'dle
Helfe
A'iza

Began work on surface soil and stones of stratum (1).

7.30 Considerable amount of tumble showing up in northern end of trench. Very little pottery - only three sherds so far.

8.30. Work stopped by rain.

9.30. Now excavating tough topsoil in southern sector of trench. Tumble in northern sector is now quite clear but has no clear pattern. Two people are picking which is making progress a bit faster!

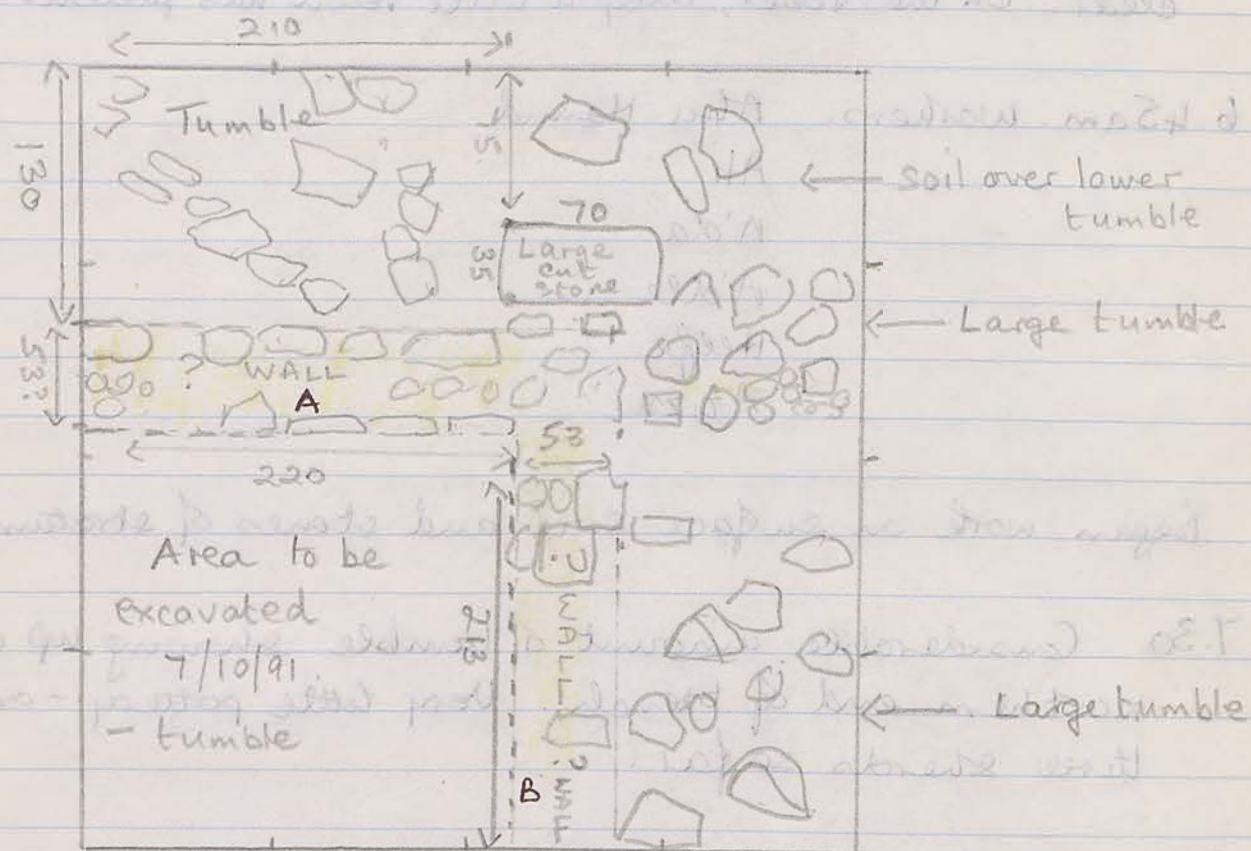
11 am. Work concluded because of rain

363/3 ①

6/10/91

No pottery - a few (6) sherds included in 7/10/91 Bag.

7/10/91. Drawing made to scale instead of photograph.



~~363/2~~ ① ?

363/3 ②

- ?? wall

6th OCTOBER (SUNDAY)

363/3 ①.11

Weather: (see previous page).

Workers: Fedwa

Sabah

Ptema

Hassan

Fethule

Shance.

6.45 am. Continuing to work on removing soil and small stones from around tumble and presumed walls in this trench, ready for a photograph so that we can proceed into stratum ②.

8.30 am. Work stopped by rain so we retreated to the cave and did not resume work until 9.30 am.

9.30 am. The rain has made it difficult to sweep the tumble clean, so progress is slow.

11.00 Work concluded because of rain. The pottery (six sherds) will be included in tomorrow's bag - same stratum.

1 bag pottery ✓

Very few sherds.

Diagnosics

Ring base sherd - complete ring - small bowl/cup

1 burnt body sherd

1 base sherd - ring base - traces of painted decoration

1 rim sherd? plain? badly decayed

7th OCTOBER (MONDAY)

Weather fine, no breeze at first

Workers: Husein

Ali

Aida

Adle

Fedwa Aziza

Heife

6.15 a.m. In Northern end of trench the tumble is very clear. More soil needs to be removed in southern end so that it can be cleaned for a photograph. We are starting work on this. No pattern yet emerging - just a jumble of tumble!

8.15 a.m. More tumble cleared in southern end of trench. It's going to be difficult to find walls until we remove the upper layer of tumble

9.30 a.m. Beginning to clean and sweep the stones clear of soil. The soil here is very hard

10.30 a.m. Sweeping showed that there was still a great deal of hard-packed soil between the stones, so we are once more trowelling and picking. Only a few pottery sherds emerging.

12.30 p.m. Just about ready for photograph.

P.C. Roll 11 c. 11-18

391/2

392/1 ①

7/10/91

363/3 S.E. (2)

1 bag pottery - very small. Look out for washed handle fragment.

Very few body sherds coarseware

Diagnosics

- 1 base sherd, rim base, large coarseware vessel
- 1 plate rim sherd, terracotta? plate, grooved interior rim
- 2 fragments amphora handle, no marks.
- 1 rim sherd - eclunius - small vessel, plain
- 2 bent sherds (Tuy)

Thu | OCTOBER (MONDAY)

1P 363/3 (2)
(S.E.)

Weather: fine.

Workers: Fedwa

Hassan

Sabah

Ptema

Shamse

Fettuleh.

6.15 am. Since the rain has blurred the stones we cleaned yesterday ready for a photograph, I have drawn the trench (see page opposite 6/9/91) instead (with P.C.'s permission!). The walls are fairly clear in the S.E. sector so today we will excavate there, removing the tumble and soil. This will be S.E. (2).

8.15 am. Excavation shows wall A quite clearly - of quite good quality for a distance of approx 1 metre from corner with wall B on south side. Distance from baulk to corner is 220 cm. along southern side of wall A.

9.30 am. Still removing a large amount of tumble from S.E. (2). Southern end of wall A not as good. Very little pottery.

11.00 am. Large stones in S.W corner of SE (2) must be removed to make the condition of wall A clearer. But first we are levelling out towards the north.

12.15: fragment of amphora handle found at N-end but not enough of it to show any stamp - will be washed with pottery (I missed it first to look for marks)

8/10/91

(YAG 10/11) 391/2 (2)

1 bag pottery 391/2 (2)

Few body sherds - all coarseware

Diagnostics

1 rim sherd - flared exterior, red-painted exterior

1 " " - plain, straight-sided thin vessel

2 burnt sherds

1 rim sherd exterior moulded rim

1 handle + body sherd - slim coarseware

8th SEPTEMBER (TUESDAY)

391/2 (2)

Weather: cool, damp, looks like rain in the east but it may pass us by.

Workers Abu Hamid (!all Sa'ad)

Aida

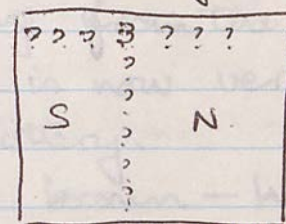
Ali

Aziza

Heffe

A'dle

6.15 am. Looked carefully at trench for possible walls. There is a line of more level stones in a E/W direction across the trench and a possible N/S wall ~~across~~ about half a metre from the ^{western} eastern boundary.



We are excavating first in the northern sector to remove tumble and soil. This is stratum (2).

7.30 E/W wall is looking more certain. Work proceeding in northern sector, working along presumed line of wall.

8.30. However northern sector of N/S wall is not there yet.

Presuming the E/W wall is a good one, there must be a wall in the northern baulk otherwise the space/room between it and the wall in the northern trench would be unusually large.

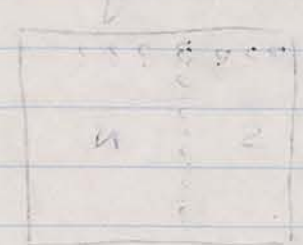
8/11/91

(PART) 391/2 (2)

... ..

... ..

... ..



... ..

... ..

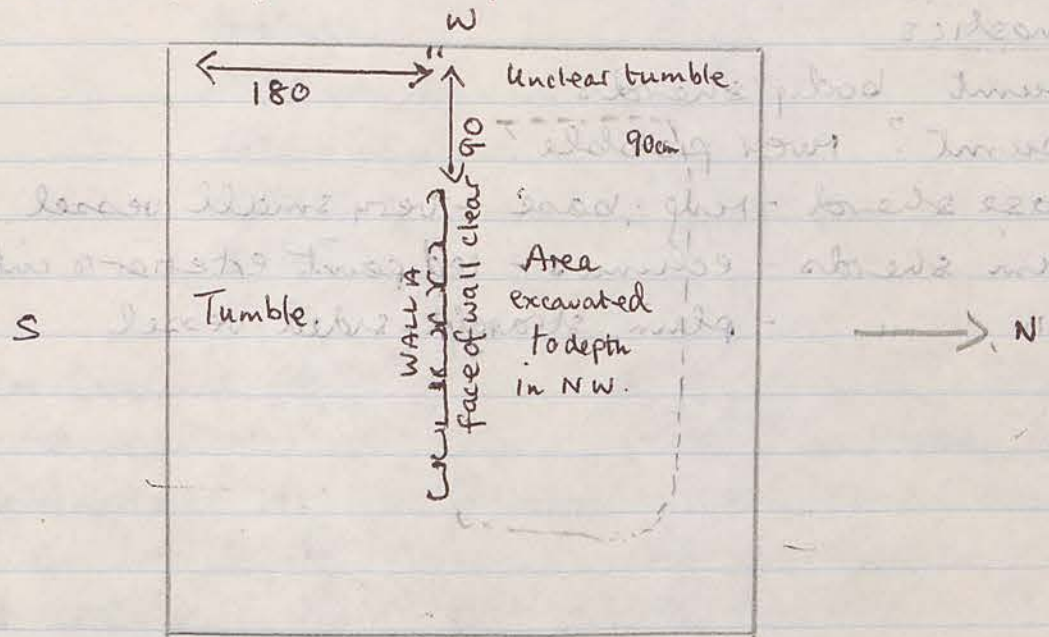
... ..

... ..

8/10/91

391/2 (2)

10.30 am Northern sector partly excavated along E/W wall (wall A) which is now clear to the west, approx depth 35 cm.



11.30. Continuing from the wall towards the north. The wall A is now very clear to a depth of 75 cm. Very little pottery. Soil a rich brown - has not changed colour in this depth.

10.15 am

11.50. Some small pieces of pottery in NW corner

After this in the wall

8/10/91

363/3

SE 2

- 1 bag charcoal
 - 1 tiny green stone (object?)
 - 1 bag pottery
- Few body sherds - coarseware

Diagnostics

- 4 burnt body sherds
- 1 burnt? river pebble?
- 1 base sherd - ring-base - very small vessel
- 3 rim sherds - echinus - red paint exterior & interior
- 1 " " - plain, straight-sided vessel

8th SEPTEMBER '91 (TUESDAY)

363/3

S.E (2)

Weather - as previous page

- Workers:
- Fedwa
 - Sabah
 - Hassan
 - Ftema
 - Shamse
 - Fethile

6.15 am. Continuing excavation in SE (2). Still a good many large rocks and very little pottery. Yesterday the excavation was 60 cm deep in NE corner of SE (2). We are levelling out at approximately this depth.

8.00 am: NW corner of SE (2) excavated but what happens to wall A here is still unclear. It certainly deteriorates. The locus appears to have more tumble underneath this depth.

10.15 am. Depth of 88 cm in S.W. corner. The soil is still the same colour and although some stones show a black deposit there is no dark soil and no charcoal.

11.50. Some small flakes of charcoal in N.W. corner at an approximate depth of 105 cm from surface.

At this site in the wall are some very regular but flat/thin (horizontally) stones which look worked. A tiny green stone also found in the soil from here. May only be river stone but bagged separately.

9/10/91

392/118
N(2)

1 bag pottery

9.10.91

391/2 N(2)

a few coarse ware body sherds

tile frags

3/4 handle frags

one bag

2 small rim frags

1 box frags

9th SEPTEMBER (WEDNESDAY)

391/2
N(2)

Weather

Workers: Abu Hamud
Aida
Ali
A'dle
Helfe
Aziza

6.15 am. Started work on northern sector of (2)
to level out yesterday's excavation. Wall A
(E/W) cleaned and very clear

7.30 am. Careful excavation at eastern end of N(2)
shows that there is a N/S wall (henceforth
Wall B) reasonably intact at a lower level.
The upper part of the wall must have been
damaged as in adjacent trench.
The level of the beginning of the good wall is at
depth of approx 80 cm from surface of western
bank.

The corner at S.W. end is quite clear.
Not so clear at N.W. corner but here large stones
have fallen which are difficult to remove without
damaging the bank or destroying the wall
further.

11.30 am. Excavation proceeding towards west. As
expected - no walls here

At N.W. corner with wall B and northern bank
excavation is 123 cm from surface

12.30 Almost cleared at this level to eastern bank

3/11/81
N 2

W. 200m (W. 200m)

Western
A. 10m
A. 10m
A. 10m
A. 10m
A. 10m

15.00m. Started with a western sector of
to cut out part of a wall (see sketch) (W) cleared out and levelled.

1.30 am. Careful excavation of western end of N 2
shows that there is a N 2 wall (see sketch)
Wall B) (remains) intact at a lower level.
The upper part of the wall must have been
damaged or removed.

The level of the pavement of the good wall is at
depth of approx 80 cm from surface of western
wall.

The corner of S. W. end is quite clear.
Not clear of N. W. corner but was quite clear
has fallen which is difficult to remove without
damaging the base of surrounding the wall
further.

1.30 am. Excavation proceeding towards west. The
excavated - no walls seen.

At N. W. corner wall B) is 1.5 m from surface
excavated to 1.5 m from surface.
1.30 am. Almost cleared at this level to eastern corner.

2/11/81
N 2
1.30 am. Started with a western sector of
to cut out part of a wall (see sketch) (W) cleared out and levelled.

Part of
Bag 1 - 2.53
Bag 2 - large water pot 2.53
Bag 3 - 2.53

1.15 am. Started with a western sector of
to cut out part of a wall (see sketch) (W) cleared out and levelled.

1.30 am. Careful excavation of western end of N 2
shows that there is a N 2 wall (see sketch)
Wall B) (remains) intact at a lower level.
The upper part of the wall must have been
damaged or removed.

The level of the pavement of the good wall is at
depth of approx 80 cm from surface of western
wall.

The corner of S. W. end is quite clear.
Not clear of N. W. corner but was quite clear
has fallen which is difficult to remove without
damaging the base of surrounding the wall
further.

1.30 am. Excavation proceeding towards west. The
excavated - no walls seen.

At N. W. corner wall B) is 1.5 m from surface
excavated to 1.5 m from surface.
1.30 am. Almost cleared at this level to eastern corner.

9/10/91

363/3 SE (2)

Objects: 1 loom weights (more to come!)
Bronze? pin

Pottery Bag 1 SE 3
Bag 2 ~~main~~ pot sherds removed from in situ
- large water pot. SE 3
Bag 3. SE.3

9.10.91

363/3 Bag 3

2 large tile frags

large frags of coarse ware jars, inc. several from same
part

inc. 1 base frag. ring base

* all in one bag.

1 handle frag cooking ware

9.10.91

363/3 SE (3) Bag 2

I think this is a cooking vessel.

9.10.91

363/3 SE (3) Bag 1

large fragments of two ring-base jars

1 handle on frag. cooking bowl

1 rim frag flaring bowl.

9th SEPTEMBER (WEDNESDAY)

363/3

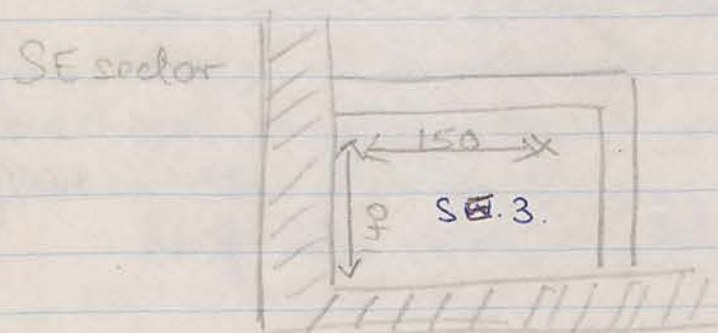
SE (3)

Weather (as previous page)

Workers: Fedwa
Sabah
Hassana
Ftem
Fethileh
Shamsel

6.15 am. Continuing to level out S.E. (2). When
level will change to SE (3) because of
appearance of charcoal in corner.

7.15 Some bone found at approx. depth of 126 cm.



8.00 am Sherds of large amphora all found in
in NE corner of S.E. (3) (bagged together)

8.10 am. Two loom weights also found in same
location at depth of approx. 135 cm.
Three more. A great heap of them in this corner.
We must be at floor level at depth of approx 135.

8.30. Signs of hard floor at this depth - also more
pottery in middle of locus at this level.

8.45. Heap of loom weights brushed down and
photographed in situ by Barrie.

8/10/91
 (1) 2.5m
 (2) 2.5m
 (3) 2.5m
 (4) 2.5m
 (5) 2.5m
 (6) 2.5m
 (7) 2.5m
 (8) 2.5m
 (9) 2.5m
 (10) 2.5m
 (11) 2.5m
 (12) 2.5m
 (13) 2.5m
 (14) 2.5m
 (15) 2.5m
 (16) 2.5m
 (17) 2.5m
 (18) 2.5m
 (19) 2.5m
 (20) 2.5m
 (21) 2.5m
 (22) 2.5m
 (23) 2.5m
 (24) 2.5m
 (25) 2.5m
 (26) 2.5m
 (27) 2.5m
 (28) 2.5m
 (29) 2.5m
 (30) 2.5m
 (31) 2.5m
 (32) 2.5m
 (33) 2.5m
 (34) 2.5m
 (35) 2.5m
 (36) 2.5m
 (37) 2.5m
 (38) 2.5m
 (39) 2.5m
 (40) 2.5m
 (41) 2.5m
 (42) 2.5m
 (43) 2.5m
 (44) 2.5m
 (45) 2.5m
 (46) 2.5m
 (47) 2.5m
 (48) 2.5m
 (49) 2.5m
 (50) 2.5m
 (51) 2.5m
 (52) 2.5m
 (53) 2.5m
 (54) 2.5m
 (55) 2.5m
 (56) 2.5m
 (57) 2.5m
 (58) 2.5m
 (59) 2.5m
 (60) 2.5m
 (61) 2.5m
 (62) 2.5m
 (63) 2.5m
 (64) 2.5m
 (65) 2.5m
 (66) 2.5m
 (67) 2.5m
 (68) 2.5m
 (69) 2.5m
 (70) 2.5m
 (71) 2.5m
 (72) 2.5m
 (73) 2.5m
 (74) 2.5m
 (75) 2.5m
 (76) 2.5m
 (77) 2.5m
 (78) 2.5m
 (79) 2.5m
 (80) 2.5m
 (81) 2.5m
 (82) 2.5m
 (83) 2.5m
 (84) 2.5m
 (85) 2.5m
 (86) 2.5m
 (87) 2.5m
 (88) 2.5m
 (89) 2.5m
 (90) 2.5m
 (91) 2.5m
 (92) 2.5m
 (93) 2.5m
 (94) 2.5m
 (95) 2.5m
 (96) 2.5m
 (97) 2.5m
 (98) 2.5m
 (99) 2.5m
 (100) 2.5m

C/1PE

9/10/91 363/3
 SE (3)

9.30 a.m. Fragments of large terracotta hydria found in situ (and in roughly the shape) in centre of trench SE (3), again at same depth (presumed floor level). This should be photographed also. Have placed a zembeli over it to protect it while we wait for P.C. to come. Working gently on clearing wall and clearing N.W. corner, meanwhile.

Photographed: 12 c 1 ff.
 also black & white
 Removed pot sherds - bagged together

11.30 a.m. bronze? pin found in N.W. corner of trench in soil - at floor level (presumed).
 Am leaving stacked loam weights to be collected from their corner tomorrow (will cover them with loose soil tonight) as I want to level out to the floor in this trench today.
 Roof tile with curved J mark - with pottery 3.

391/2

10/10/91

Objects: bronze? ring?

1 bag pottery N (2)

391/2 N (3)

2 dozen body sherds, coarse ware

1 rim frag echinus bowl

1 body frag cooking ware, One small bas.

391/2 N (2)

2 dozen coarse ware body sherds

1 frag tile

1 lamp frag.

1 base frag?

One bag.

OCTOBER
10th SEPTEMBER (THURSDAY)

391/2

HJ's LAST DAY!

Weather: fine

Workers: Hamid
Husein
Ali
A'dle
Ariza
Helge

6.15 am. Continuing to excavate N (2) to same level in N.E. corner of this locus.

8.20 am. Cleared to eastern end of N (2). There is some very tough soil in the middle of the "floor" but the "floor" (if it is one) is extremely uneven with very large stones embedded in it. As so little pottery has turned up in the whole locus, I am inclined to think this is not yet floor level.

8.45 am. Having noted that this may have been a later floor level (there is no crushed limestone) at a depth of 120 cm from surface, we are excavating further down. The soil at the eastern end of the locus is very soft anyway.

If this trench joins the "room" in adjacent trench the floor level to which that was excavated (in previous year) was much lower.

This is now N (3)

10.15 Object: ? bronze ? ring / earring found when large stones removed in SE corner of locus at 80 cm. depth from surface at eastern bank (ground slopes steeply here).

3/1/2

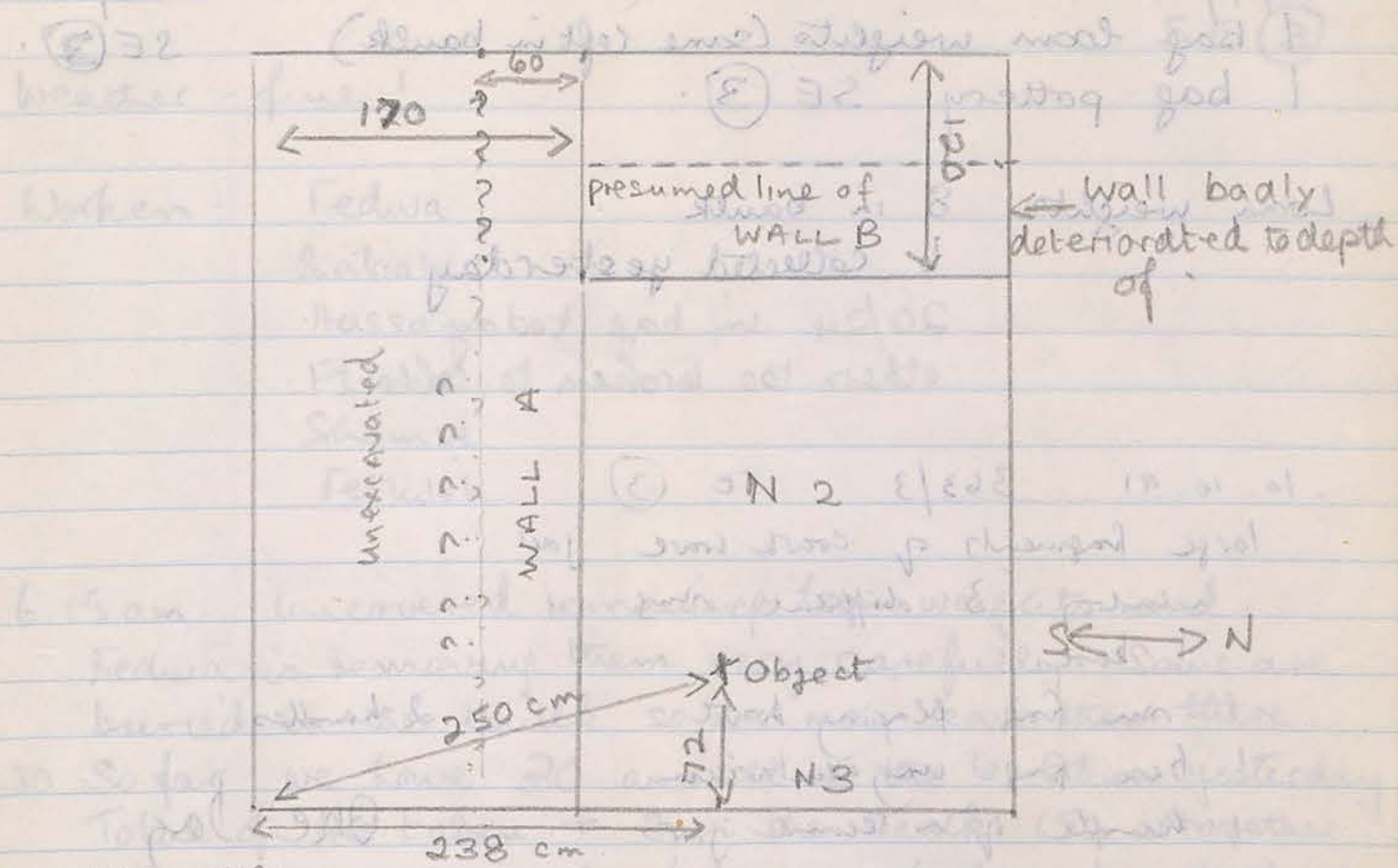
Handwritten notes on the left page, including a list of items and some diagrams.

8:30 am. Excavation & recording. In the corner of the room, a large fragment of pottery was found. It is a fragment of a bowl, with a very rough surface. It is a fragment of a bowl, with a very rough surface. It is a fragment of a bowl, with a very rough surface.

8:45 am. Found a fragment of pottery. It is a fragment of a bowl, with a very rough surface. It is a fragment of a bowl, with a very rough surface. It is a fragment of a bowl, with a very rough surface.

10:15. Object found. It is a fragment of a bowl, with a very rough surface. It is a fragment of a bowl, with a very rough surface. It is a fragment of a bowl, with a very rough surface.

39/1/2



Complete with of large pot found a half to south of room - weight etc. It also looks as though there are more fragments in the soil beneath it. P.C. done at end to photograph this so I have taken a slide of it in situ.

9:30 am. Found foot of unguentarium. We are removing remaining soil and the large fragments of pot, and then sweeping down to clean up the room. There may be a floor level below this. As usual the soil near the walls is very soft but the middle of the "floor" is hard.

11:00 am. Will leave it as presumed floor for now and begin excavating in S.W. corner to establish corner of wall.

See next page for diagram

10/9/91

1 bag loam weights (some left in bank)
1 bag pottery SE (3)

SLIP

363/3

SE (3)

Loam weights 8 in bank
6 collected yesterday.
20/24 in bag today
others too broken to collect.

10. 10. 91 363/3 SE (3)

large fragments of cork ware jars
including 3 different shapes

1 base

1 rim frag flaring bowl

1 base frag unguentarium

1 handle of a second jar.

2 handles

One Day.

OCTOBER!

10th SEPTEMBER (THURSDAY)

363/3

SE (3)

Weather - fine!

Workers: Fedwa
Sabah
Hassana
Ftema
Shamse
Fetuleh

6.15 am. uncovered remaining loam weights and Fedwa is removing them very carefully. Some are buried in the bank so we may leave them there.

6.30 So far we have 30 as well as the 6 taken yesterday. Total of 40 taken + 8 in the bank (54 altogether)

8.00 am: Complete neck of large pot found a half-metre to south of loam-weight site. It also looks as though there are more loam weights in the soil beside it.

P.C. does not wish to photograph this so I have taken a slide of it in situ.

9.30 a.m. Found foot of unguentarium. We are removing remaining soil and the large fragments of pot, and then sweeping down to clean up the room. There may be a floor level below this. As usual the soil near the walls is very soft but the middle of the "floor" is hard.

11.00 am Will leave it as presumed floor for now and begin excavating in S.W. sector to establish corner of wall.

See over page for diagram

10/10/91

363/3
Tumble
excavated to floor
SE (3)

210
195
200
approx 203

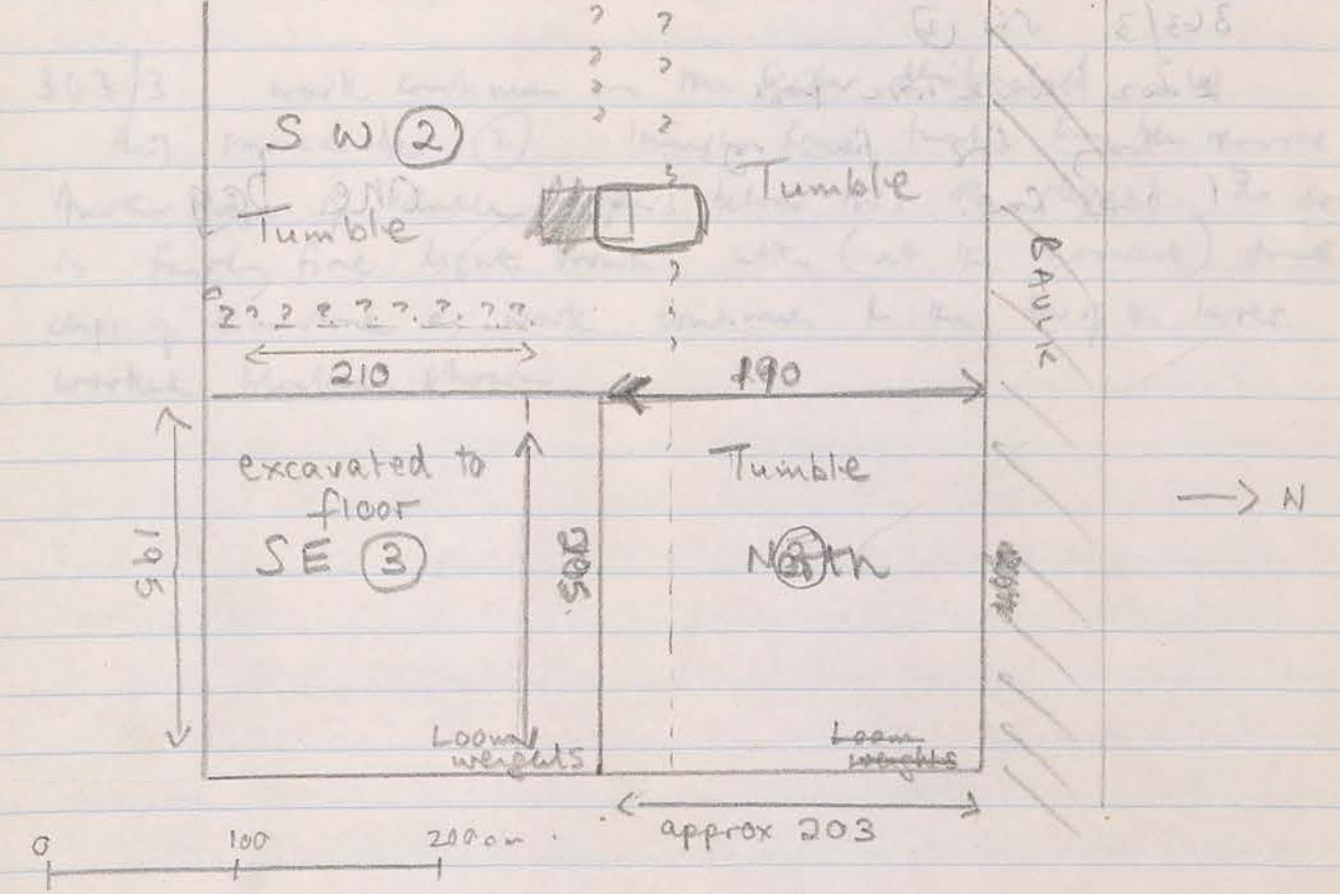
excavated to floor
SE (3)
Loom weights

excavated to floor
SW (2)
Tumble
Loom weights

excavated to floor
SW (2)
Tumble
Loom weights

10/10/91

363/3
Tumble
excavated to floor
SE (3)



excavated to floor
SW (2)
Tumble
Loom weights

19/10/91

363/3

12.10.91

363/3 SW ②

2 doz work ware bags

1 body bag fine rg.

1 base bag.

one bag

Saturday 12 October 1991

Weather overcast, cool, breeze from NW

Workers 6 as usual

363/3 work continues on the sector designated SW.

This should be ② though some tangle has been removed.

Another layer of tangle appears below this deposit. The soil is fairly fine, light brown, with (at the moment) small chips of limestone as work continues to the W of the latter worked block shown

12.10.91

363/1 W (6)

11.15 am. Following completion of Main Gate (as I see it) my workers transfer to 'Stoa' area and continue work on 363/1.

My reading of the last stratum from this glorious book is that work concluded here on W (5), leaving the area unprinted but having cleared down to the base of the NS wall with the corner!

This is no doubt a continuation of (5) but, for the sake of prudence and dignity, I designate it (6)

We begin towards the N end where the current level is higher than at the S. The soil is light brown and though there are many chips of and chunks of limestone included in it, it is quite soft, towards the West at least whilst close to the wall there are more stones, the soil is more of a reddish colour and the deposit is at least a little harder.

As observed before the stones in the deposit here are sharp edged and should probably be thought of as fill rather than fumbled rubble which normally has a smoothed or worn surface

11.40 more tiles emerging.

12.10.91

391/2 N ③

- Smallish lot crack wave body sherd
- 2 handle root fragments
- 1 handle fragment
- 2 bare frags (1 rg)
- 43 rim frags echinus bowls
- 1 rim frag notched rim bowl
- 1 rim frag semi coarse rolled rim.
- 1 line by rim

12 October 1991

two

391/2

workers 6 as usual

A 'pass' begun previously is continued today working from towards W. The pass is approx 10-15 cms deep. The soil is a fine light brown, though darker when fresh. There is a light scatter of small chips in this soil. At the E of the trench, in places, the 'floor' is hard and in places soft. Therefore it is hard to discern.

As I understand it, we are working in N ② since N ③ seems to be the lower level in the E. (?)

Perhaps this pass is N ③, I decide after further consideration.

11:30 am. The current pass is concluded and now the walls are being cleaned.

I have scraped at this level and it is clear that the floor has not yet been reached. The soil beneath, when fresh, is a rich light brown; there are very few inclusions, though at the E end there are signs of a couple of blocks of tuff.

In the N bank there are clearly two layers/courses of tuff. When the wall is smooth and straightened light brown soil.

13.10.91

363/3 SW (4)

Small lot coarse ware body sherds

1 base frag rg

2 base frags clw 'bowl'

2 small rim frags

body frags cooking ware

1 rim frag celina bowl

1 rim frag. notched rim bowl.

Sunday 13 October 1991

Weather: overcast, cool, slight breeze from N

Workers all present 3 teams of 6

363/3 SW (4)

After final cleaning of the second layer of tumbled in the W sector, ϕ R0115C 4+5 from S and W

We then begin to remove these large blocks of rubble the line of the EW wall is clear.

The second layer of tumbled is (3)

The light brown soil immediately beneath is (4)

There are chips of limestone in the light brown soil.

The large stone to the W of the NS wall line is now being isolated as the tumbled is removed.

9.50 am

Work continues at S of this sector. The light brown soil full of limestone chips

12.10.91

363/1 W (6)

Small wt coarse ware body sherds

1 base frag of plate

2 base frags

1 purple rim frag

4 rim frags echinus bowls

2 rim frags flaring rim bowls.

1 rim frag by bowl

13.10.91

363/1 W (6)

Smallish wt coarse ware body sherds

1 rim frag large echinus bowl.

4 rim frags echinus bowls

2 handle frags

1 base frag

2 rim frags attached rim bowl

1 frag by

2 frags cooking ware

13 October 1991

363/1 W (6)

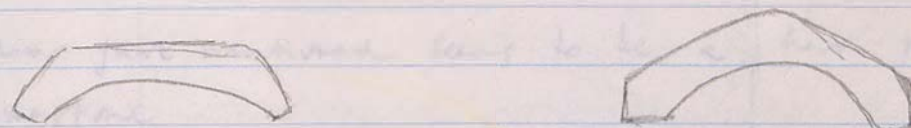
Work continues

By 7.15 am a zambit full of tile fragments which are added to the pile W of the trench. The tile saga continues. The soil is hard with much stone inside

7.40 am another zambit - full of tile fragments

There would be signs of a hard floor where we are working which is approx in line with the corner of the so-called lean to

There are two sorts of cur like in this



The soil is a reddish brown here. In the N baulk of the W sector is a very large block of tumbled

7.50 am another zambit full of tile fragments emptied on the pile. There is only one small sherd, dark tile, no pottery

9.45 am

In the S part of the trench now we are using the big pick to loosen this hard deposit

The stratigraphy of the N baulk shows a grey-brown soil with a little tumbled then the sharp edged chunks of limestone in red-brown soil.

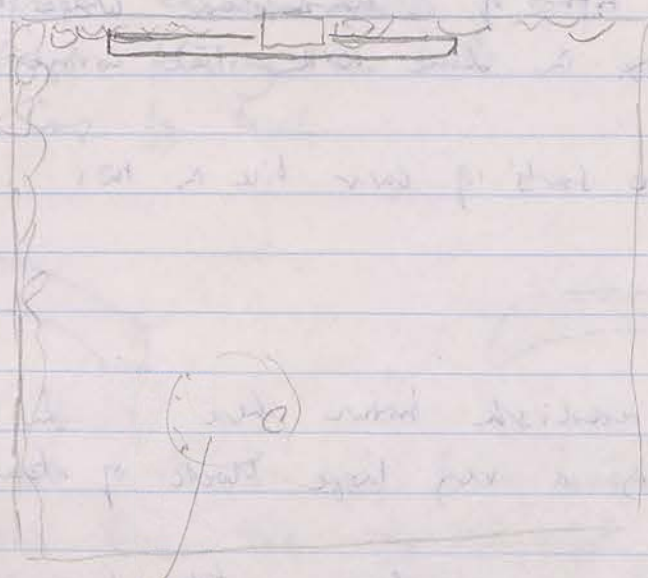
The deposit now is full of chips and chunks of limestone

11.45 a house was found at a point below all the dump or fill of (6) or rather within the last traces of that deposit, against (even in) the W baulk of the trench. At the N end of the trench, there are no longer signs of the dump. The soil is clear on the surface, and is a rich brown colour.

391/2

To the S of the large vertical block the inner face of the wall has collapsed somewhat

In the centre near the E is a large patch of dark soil with some charcoal and a large pebble in it



dark soil with charcoal and pebble

In N bank there are slight traces of gray soil and small flecks of charcoal

Apart from the collapse section the walls are well-made.

391/2 S (3)

3 sherds only

13.10.91

391/2 S (3)

13.10.91

391/2 N (3)

Small wt coarse ware body sherd

5 body sherd

1 purple rim frag.

3 rim frags echinus bowl (one large)

2 handle root frags

Small body frags fine rg.

frag cooking ware

1 small tile frag.

13 October 1991

391/2 N (3)

Small frag of bronze 7.15 am as work continues

We proceed forwards the W from approx half way along the trench. Soil a rich light brown with very little pottery at the moment

Work here is pretty slow.

9.30 am At the W end, in the centre, there are signs of a hard floor. The floor is not so clear in the NW corner but we will make this level the depth throughout.

In the centre of the trench there are traces of a darker clotted soil.

The floor just mentioned seems to be a hard-packed crushed limestone.

Still little pottery.

In the SW corner of 391/2 N river mud has been used to pack between the stones

11.50 The floor of this room is being swept down; the walls have been cleaned. It looks very neat + tidy and a credit to its (present) excavator.

The stratigraphy at the N shows, below the double stratum of tumble, an uneventful unmixed deposit. There is a small block of tumble on the floor close to the NE corner of the trench

We shall probably have to do the S sector now.

12.15 pm. ϕ of 391/2 N from E and NE showing walls on W and S sides. ϕ R15c \rightarrow 13; SB \rightarrow 6.

a frag of rg + rimmed by etc on the floor, also two or three river pebbles, a fragment of burnt pottery and another dark find. The floor is hard packed clay, but there are traces of lime beneath. In the W wall is a large limestone block vertically placed. This wall seems to rest on a substantial limestone base (perhaps composed of several blocks).

14.10.91

391/2 S (3)

smallish wt coarse ware body sherds
inc several large frags amphora

3 base frags

1 base frag rg base

body frags rg.

1 rim frag

1 profile rim frag.

1 by rim frag.

Monday 14 October 1991

Weather cool, overcast slight breeze

391/2 S (3)

Workers: 6 as usual

In this narrow sector the tangle (2) has been removed
and we are working today on the upper layer of the
soil beneath, which is therefore stratum (3).

A few rubble stones have been left at the W in case they
are the continuation of the wall in the N sector previously
excavated.

Another layer of tangle is appearing.

12.25 pm. Unsettled day in this little neck-of-the-woods.

The S face of the wall is not yet located. At the E of the
trench powdered limestone in one small area seems to indicate
a decayed limestone block.

Very little pottery.

Rain starts again, a scatter of drops.

14.10.91

363/1 W (6)

Small wt coarse ware pottery

- 1 handle frag.
- 2 rg base frags
- 2 base frags
- 1 base frag + part firm plate
- 1 echinus rim frag.
- 1 amphora toe frag.

14.10.91

363/1 W (7)

medium wt coarse ware body sherds

- 1 + 4 base frags
- 2 frags firm plates
- 2 amphora toe frags
- 3 handle frags
- 1 pyramidal loomweight
- 1 green glaze base frag
- 1 loomweight
- 2 rim frags
- 5 echinus rim frags
- 2 rim frags notched rim base
- 1 mortarium rim frag.
- 1 frag lamp etc
- 4 rim frags

14 October 1991

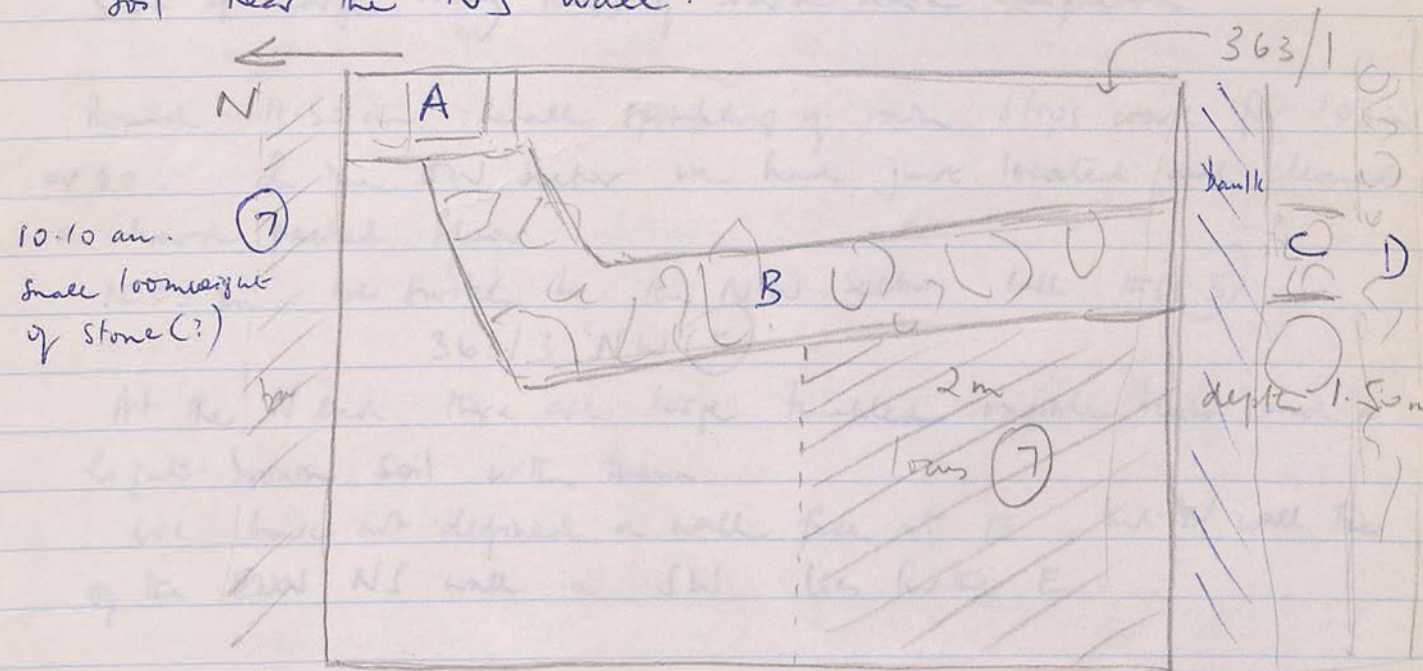
363/1 hovers: 6 as usual

Continue on W (6) in the S sector of this trench where there are still some traces of fill previously described

By 9 am we have completed this stratum (6). Very few fragments of tiles appeared this morning. They were confined largely to the N part of the trench.

At 9.30 am, I measure out for excavation the S part of the trench, a length of 2m from the S bank. This locus is designated (7) and the pottery zone is kept separate.

This deposit is approx 1.50m down from the top soil near the NS wall.



When Benby Benson cut the soil is a dark brown. Although the area W of wall B seemed to be exterior to the 'store' building, in the trench immediately to the north (363/2) an EW wall extends to the end of the trench. C is the continuation of B, there was a tunnel just W of it almost immediately below the surface. There was no indication that the small stretch of C (1.10m) showed any sign of being irregular.

Unless there is an EW wall in block N of 363/1, there is nothing between wall D, which is the wall that closes off the S end of of the main 'stoa' rooms and the EW wall in 363/2 which runs W from the rear facade of the main 'stoa' rooms a little to the N of the wall that divides N Room from S Room.

14.10.91

363/3 NW (5)

11 frags coarse ware body sherds

14 October 1991

workers: 6 as usual

363/3 SW (4)

We continue on this light brown soil. Yesterday the excavation continued also to the N past the large block. There does not appear to have been a wall there.

10.20 am This morning the sector of excavation has in fact been defined as the SW (4) since the top of wall is appearing beneath the large block at the 'centre'.

At this time 3 clay horaeigns appear at a depth of 88 cms from the top of the large block. A hard packed surface is also emerging, it seems. There are from this cover 3 or 4 large body frags of coarse ware amphora.

Round 11.50 am. Small sprinkling of rain stops work for 10 mins or so. In the SW sector we had just located and cleaned a hard packed floor.

12.05 pm. we finished to the NW sector call this (5)

363/3 NW (5)

At the N end there are large tumbled rubble blocks and a light brown soil with them.

We have not defined a wall face at E, but ~~the~~ wall face of the EW NS wall in SW lies further E.

14.10.91

363/3 NW (5)

11 frags coarse ware body sherds

Tuesday 15 October 1991

Weather: clear, fine, cool at first - only a slight breeze

363/1 W ⑦

workers: 6 as usual

Work continues in this locus which is below ⑥ but only in the SW area S of the trench.

This trench has been exceedingly uneventful. It will be interesting to see if lower depths yield like earlier trenches dug to bedrock.

We are down about 1.60 m from the surface level at S, working to N, where large blocks of rubble are emerging

6.34 am.

a corroded but reasonably well preserved iron dagger blade

8.30 am. This little rubbishy trench has been quietly converted into something important (I suggest) because rough rubble blocks running N-S and E-W have appeared and in the SW corner of the trench the bedrock has been cut vertically to for the N-S wall to be placed on level ground. *

below the level of these wall blocks were found a bronze coin and a fragment of a bone pin

I have changed the plying bag to 363/1 W ⑧

The strainer ⑦ is still active as we move N to the 2 m. mark

8.45 am. ⑧ another bronze coin corroded
Notes continue in further book

15 October 1991

Workers ..

6 as usual

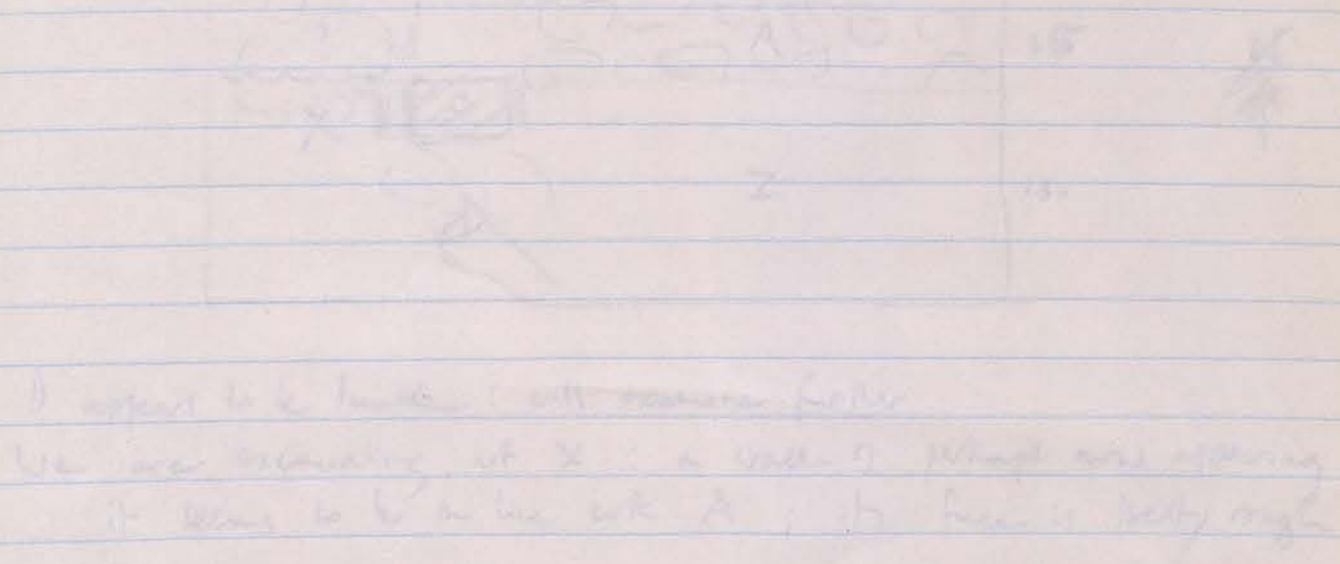
391/2

Working towards the W, several loads of rubble are removed. The soil is a light brown colour. As yet the S face of the EW wall is still undepied

12 noon During the morning a line of blocks emerged that can be seen as a sort of stylobate. 4 long oblong blocks have been uncovered from E to W. The rubble wall is built back from them. There are 3 or 4 well shaped blocks on this stylobate but also stones of field rubble. The profile of the wall above is jagged. The 4 blocks of the stylobate have at least one more block beneath them, at the E at any rate.

For the moment we are cleaning the wall; but we will then proceed deeper.

At the W it is clear that we have no wall. However by now we are approximately 1 metre deep so I intend to leave this part unfinished, at least for the moment



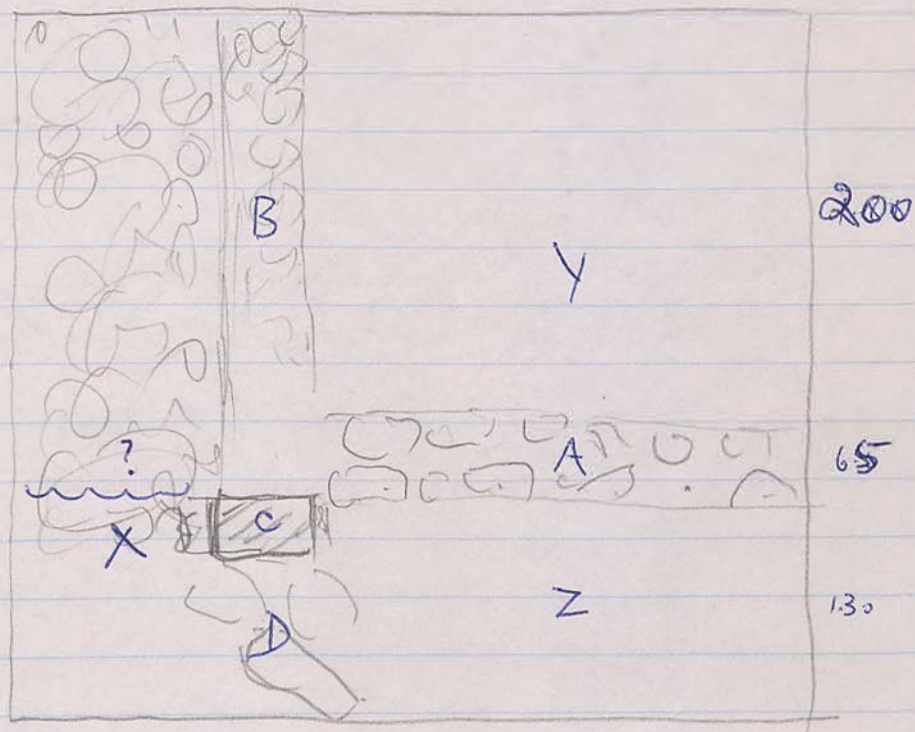
15 October 1921

363/3 NW (5) = NW 2 in mv. book

In this small area, there is considerable tumble the wall at the E does not seem very clear.

12.05.

In the N section it became clear that we should proceed E from more or less the NW corner of the trench. We had not encountered a wall to the E to the W of the large block there are large stones, below its base, but these seem to be random tumble. The large block appears to rest on soil



It appears to be tumble: will examine further. We are excavating at X: a wall is perhaps now appearing. It seems to be on line with A; its face is pretty rough.

H.J.'s work on Stoa 1991 - (Continued from back page)

8. Trench 363/3 opened. At 10/10/91 the South Eastern sector has been excavated to a floor on which rested several large pots and a big stack of loom weights. Approximate level from surface 136 cm from N.E corner. Wall A (N/S) and Wall B (E/W) may continue into other sections of this trench, not yet excavated.
9. Trench 391/2 opened. A north-south wall continuing from adjacent northern trench was hard to find but is now established in northern sector. Wall A (east-west) divides this trench into two sectors. At 10/10/91 the northern sector has been excavated to N③.

Summary of observations

1. Depth and base of long north/south "perimeter" wall of Stoa has been established
2. Presence of oven at this depth poses questions.
3. Level of courtyard contemporary with steps of Stoa est

Summary of H.J.'s work on Stoa 1991

1. Trench 363/3 - opened 10/10/91. South Eastern sector excavated to floor level. Loom weights and large pots found. Wall A (N/S) and Wall B (E/W) identified. Level 136 cm from surface.

2. Trench 391/2 - opened 10/10/91. North-south wall established. Wall A (E/W) divides trench into two sectors. Northern sector excavated to level N③.

3. Summary of observations:
- Depth and base of long north/south "perimeter" wall of Stoa established.
- Presence of oven at this depth poses questions.
- Level of courtyard contemporary with steps of Stoa est.

Summary of HJ's work on Stoa
1991 season.

1. Baulk between 391/3 and 392/9 - removed - pillared doorway.
- blocked by decayed column and small rubble
2. Trench 363/2 - completed excavation in northern locus
(left unexcavated in previous year.)
Blocked doorway, large cut stone.
3. Trench 392/3 - new '91 trench completed. Excavated in
southern sector to floor level at approx. depth 97cm in
S.E. corner. Showed continuation of strong E/W wall
Excavated in section of northern sector to the base
of the wall A (~~east~~ / ~~west~~) at a depth of 246cm.
from surface. Here a large oven was found on the floor.
4. Baulk between 363/2 and 364/8 removed. A blocked
doorway was found in the E/W wall and an ill-aligned
entrance into an apparently small enclosure "behind" the
"Stoa".
5. Trench 363/1 opened. Irregular wall enclosing S.E.
locus. This locus was excavated to floor level at approx.
136cm depth in SE corner.
Western and remaining sector (small N.E. corner
revealed much pottery) excavated to base of wall
and was then abandoned as being "outside" the walls
6. Trench 364/2 - a section at the steps was excavated to
the width of the steps and a metre into the courtyard.
Excavated to the crushed limestone floor at base of
steps. Stamped (ΑΤΤΑΚΟΥ) handle of amphora
7. Trench 392/5 opened and completed. Excavated ^{only} to
floor level of crushed limestone. Good walls on
west and north with blocked doorway in ^{northern} western wall.
Southern wall poorer quality with possible blocked
doorway. Fragments of painted plaster (red, blue/
green, yellow) found on floor suggest fine room.

Objects: bronze? ring?

391/2

10/10/91

1 bag pottery N (2)
391/2 N (3)
1 m frag edgins brd
1 bag frag cooking ware.
1 m frag

One small box

391/2 N (2)
2 down crnk were brd steds
1 frag tile
1 lamp frag.
1 brk frag?

One bag.

10th SEPTEMBER (THURSDAY)

HJ's LAST DAY!

391/2

Weather: fine
Workers: Haniid
Husein
Ali
N'alle
Atiza
Helge

6.15 am. Continuing to excavate N (3) to same level
in N.E. corner of this locus.

8.20 am. Cleared to eastern end of N (2).

There is some very tough soil in the middle of
the "floor" but the "floor" (if it is one) is
extremely uneven with very large stones
embedded in it. As so little pottery has
turned up in the whole locus, I am inclined
to think this is not yet floor level.

8.45 am. Having noted that this may have been
a later floor level (there is no crushed limestone
at a depth of 120 cm from surface, we are
excavating further down. The soil at the eastern
end of the locus is very soft anyway.

If this trench forms the "room" in adjacent
trench the floor level to which that was
excavated (in previous year) was much lower
This is now N (3)

10.15 Object: ? bronze? ring? Leaning found when large
stones removed in SE corner of locus at 80 cm.
depth from surface at eastern baulk (ground slopes
steeply here).

37

9/10/91

363/3
SE (3)

9.30 a.m. Fragments of large Terracotta
lygia found in situ (and in roughly the shape
in centre of trench SE (3), again at same depth
(presumed floor level). This should be
photographed also. Have placed a zemballi over
it to protect it while we wait for P.C. to come
working gently on clearing wall and clearing
N.W. corner, meanwhile.

Photographed: 12 c 1 ff.

also bleach & white

Removed pot sherds - bagged together

FE

11.30 a.m. bronze? pin found in N.W. corner of trench
in soil - at floor level (presumed).

Am leaving stacked beam weights to be collected
from their corner tomorrow (will cover them with
loose soil tonight) as I want to level out to the
floor in this trench today.
Rough tile with curvilinear mark - with pottery