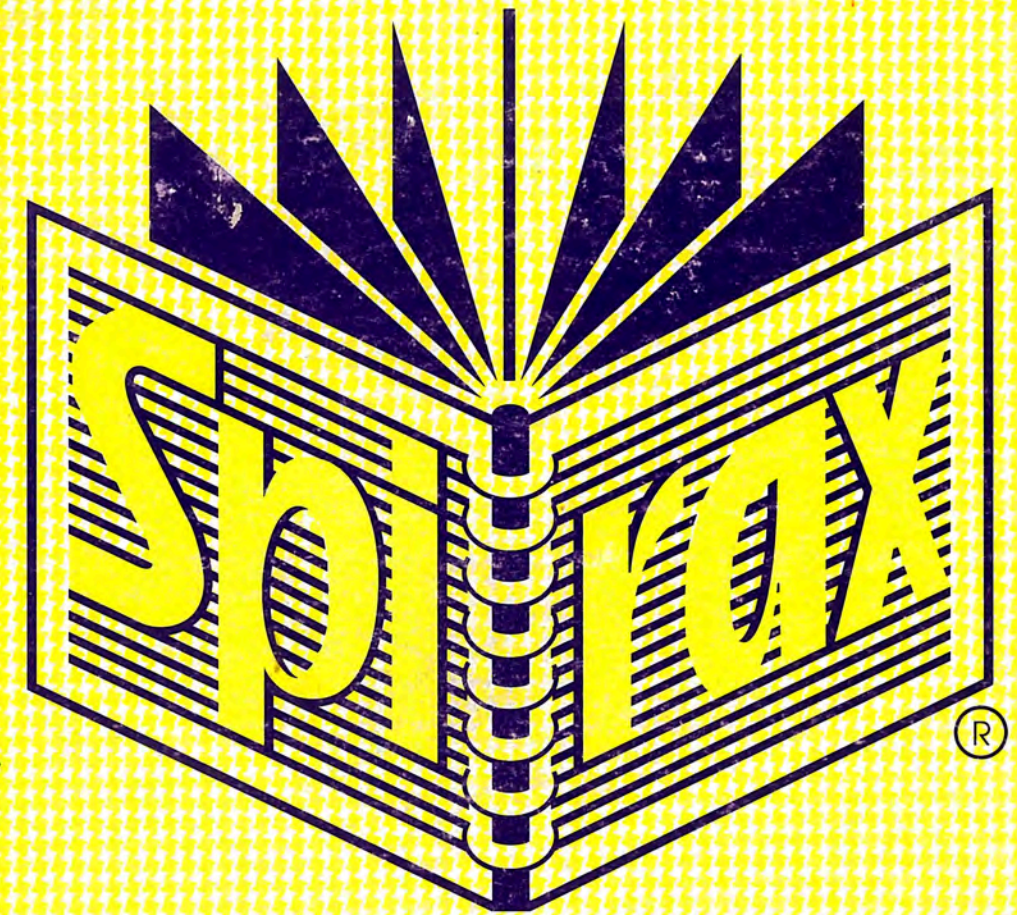


JEBEL KHALID 1991

✓φ(1992)



# A4 NOTE BOOK

No. 595

Coins 8, 10,

6 coins missing . 91.169  
. 91.309  
. 91.308  
. 91.311  
. 91.399  
. 91.501

MAIN GATE

Book 2

P. J. CONNOR  
1 OCTOBER 1991 -



9 312828 005954



1 October 1991 Tuesday

Weather: cool with cold breeze at first; generally becoming hot by 11 am. Today marks the end of Syrian Summer Time; but we have retained it as Camp Time because of the heat of the sun by midday and mid-afternoon.

Workers: Yazi, Amouna, Mohamed, Khalid, Ali, Muthayy (6)

#### MAIN GATE

MGS 91/5 (2)

Work continues on removing the powdered limestone. We are now close to the E boundary of the trench. In the SE corner at a level a little below the top soil is a large block of rubble which must be removed soon.

A few strands are emerging but I assume these come from the upper surface of the black soil which lies beneath the powdered limestone and which is being scraped as the powdered limestone is removed.

9:55 am. at the N of the trench we are working in blackish soil but as this soil is scraped there are substantial traces of white powdered limestone: the white and the black continue to be mixed in.

As the outer face of the circuit wall is cleared the field stones observed in the face in 1990 became more extensive. It is a strange thing to find the circuit wall constructed of rubble stone. Perhaps this was a restoration of some collapse or destruction.

was this restoration when wall was reused, possibly, as house-wall? pottery suggests extensive domestic use?



1.10.91 MGS 91/5 (3) bag 2

medium wt coarse ware pottery inc. frags of cooking ware body frags

6 ring-base frags; 1 rg base frag.

3 rim frags echinus bowls

10 rim frags simple rim bowls.

2 rim frags fine rg bowls

1 handle + rim frag small c/w 2? handle bowl.

7 rim frags profile rim bowls

1 rim frag mortarium.

semi coarse etc, painted, body frags

1.10.91 MGS 91/5 (3) bag 1

large wt coarse ware body frags.

1 handle + rim frag small coarse ware jar.

1 rim frag semi coarse bowl Wb towards base.

1 rim frag painted bowl

1 rim frag flaring rim bowl.

body frags rg body frags cooking ware

4 ring base frags c/w bowls/jars

3 2 rim frags (Profile)

1 rim frag rg bowl.

3 rim frags echinus bowls.

1 base frag t-c lamp.

etc etc

1.10.91 MGS 91/5 (2/3)

medium wt coarse ware body frags

1 base frag rg plate

1 handle frag

5 base frags

1 base frag t-c lamp.

1 fillos rim frag

body frags cooking ware

2 rim frags echinus bowls.

profile rim bowls

4 profile-rim.

1 October 1991

10.05 am

The previous remarks seem to apply to the section of the trench close to the S face of the Tower. As we proceed further south, in a deposit that is being newly excavated, the black soil is more consistent. At any rate I have changed the filtery loc. The depth of this pass is about 80 cms down from the preserved block of Tower ~~and~~ at join of Tower and circuit wall

At the SE corner also we have now begun working in a deposit of dark soil which is very fine and has tiny specks of carbon in it. The soil also contains fragments of bone

The wall blocks appearing in the SW corner are smallish but quite respectable ashlar blocks

I have amalgamated all the (2/3) shards and keep all definite (3) shards separate.

At the W of this trench there is still some powdered limestone deposit.

207/6 (P.M.)

At the conclusion of work  $\phi$  loc 1- of a broken amphora stand standing in situ, except that its base is broken jaffed as well as the rim.

$\phi$  shows location to N of a 'blocked' doorway: at any rate near a door jamb



2.10.91 MGS 91/5 (3) 3 of 3

- medium wt coarse ware body sherds
- 4 base frags + 1 with shreds red paint
- 2 rim frags mortarium
- 6 rim frags profiled rim jars
- 6 rim frags flaring rim bowls
- 3 handle frags
- 2 amphora toes
- 1 tc lamp nozzle + 1 tc lamp striated frag.
- 1 semi-coarse bowl rim frag
- 3 rg body sherds
- 1 cooking & ware body frag
- 1 rim frag eching bowl
- 5 frags rg base, rim, ribbed inv.
- 1 rim frag pie crust + wavy incised dec. inv. + body sherds ditto

2.10.91 MGS 91/5 (3) 2 of 3

- large wt c/w body sherds
- 9 base frags c/w bowls/jars
- several body sherd cooking ware
- 2 body frags c/w with incised wavy dec
- 1 base frag rg plate
- 1 full body frag green glaze, open vessel
- 7 rim frags profile rim
- 8 rim frags flaring rim bowls
- 4 handle frags c/w jars etc. 1 handle frag small jar
- 8 rim frags profile rim bowls
- 1 rim frag mortarium
- body frag rg
- 1 neck frag mortari
- 2 3 rim frags fine rg bowls

2.10.91 MGS 91/5 (3) 1 of 3

- large wt coarse ware body frags.
- 9 base frags inc 2 fine plate frags
- 1 body frag incised wavy dec
- 3 rim frags flaring rim bowls
- body frags cooking ware

Wednesday 2 October 1991

Weather, cool at first breeze from NW, hazy in E. Some wispy cloud.

Workers, Yari, Amroun, Ali, Mathbey, Khalid, Mhamed (6)

Main Gate South

MGS 91/5

Work continues in the fine dark soil against the wall from which a good deal of pottery is emerging: some small frags. of glass and, again, a quantity of bone. There are small flecks of charcoal in the soil. We are working from E to W

At the N. end of the trench, by 7.30 am, a reddish harder soil is appearing. This could be the red layer above bedrock. We leave it and proceed W.

By 8 am we have cleared about a metre wide along the wall. The wall has a course of long thin blocks above some larger rougher blocks which may be the foundation course.

We are working around the bottom of the foundation course

- 8 rim frags profile rim bowls
- 2/3 frags green glaze vessels
- 1 lip + neck frag. unguentarium
- 2 rim frags fine rg bowls
- 2 joining base frags gray ware incised pointed dec worked stone
- 8 rim frags semi-coarse bowl inc. eching rim
- 1 rim frag red paint/sherds



2.10.91

MGS 91/5 (4)

- medium lt coarse ware frag sherds
- body frags with greeny brown tinted deposit
- numerous body frags of cooking ware
- body frags with drip paint
- 1 amphora toe.
- 7 base frags
- 2 base frags rg plates
- 4 rim frags flaring rim bowls
- 1 handle frag
- 1 rim frag with pinched-out feature
- 1 rim frag echinus bowl
- 1 rim frag simple rim bowl
- 2 rim frags fine rg bowls
- body frags fine rg
- 1 mortarium rim frag.

5.10.91

MGS 91/5 (3) bag 2.

- medium large coarse ware frag sherds
- 6 base frags coarse ware bowls/jars
- 6 handle frags
- several body frags cooking ware
- 5 rim frags flaring rim bowls
- 6 profile rim frags
- 12 body frags fine/semi-fine rg.
- 3 rim frags rg fine
- 2 base frags

rw.  
lw.

Saturday 5 October 1991

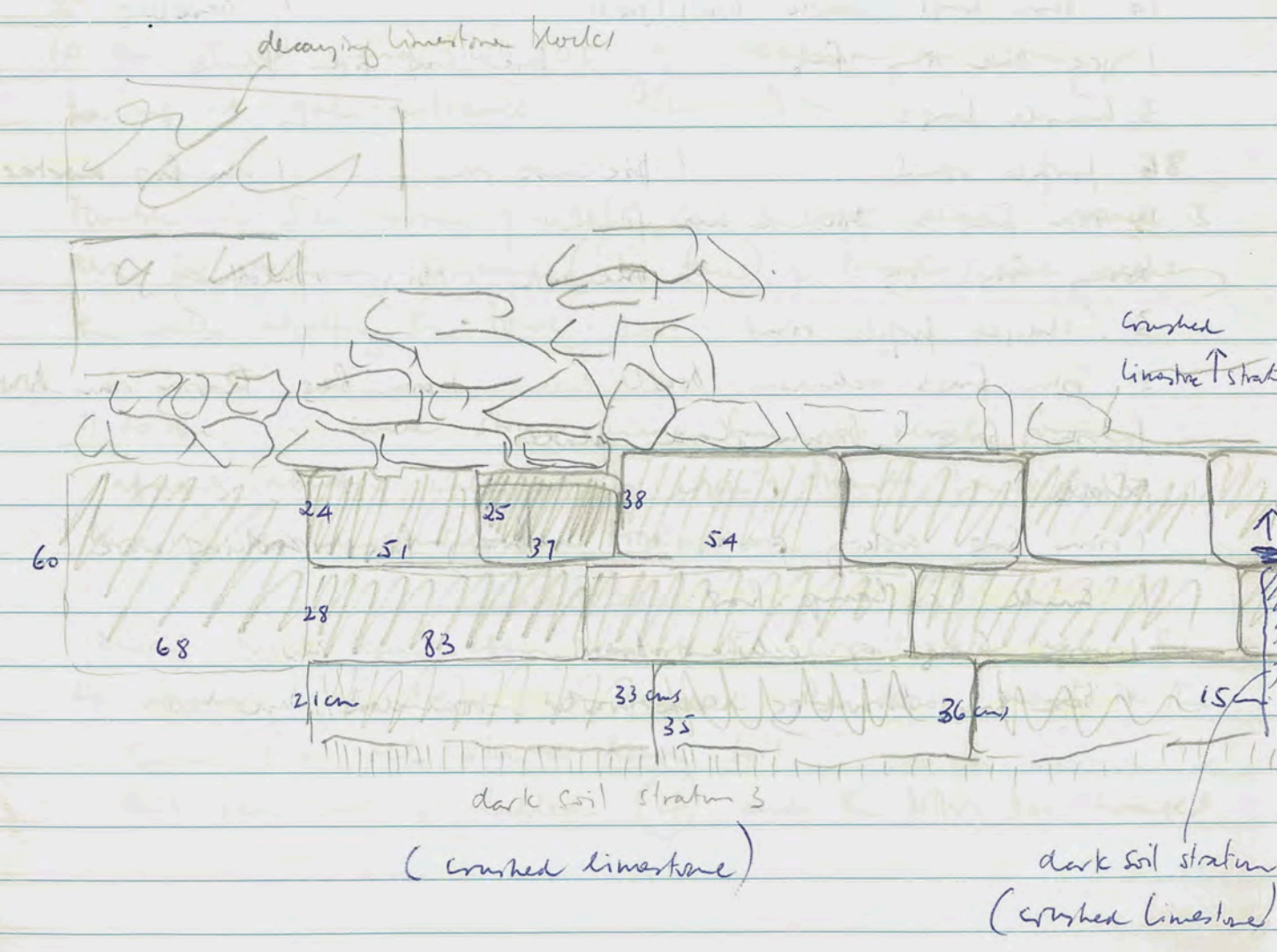
Weather: cool at first (+ dark) no breeze, wispy cloud

Workers: Yasi, Sara, Ki, Nukhey, Amouna, Mohamed, Khalid (7)

MAIN GATE SOUTH

After 2 days break from work, we continue in the W sector of trench 91/5 bringing the floor level of the trench to that (almost) equal to the depth reached in the E area near the wall.

On this deposit is a layer of crushed limestone but since very little pottery comes from this layer I retain the label (3)





5.10.91

MGS 91/5 (4) (red)

small lot coarse ware frag sherds

1 mortarium rim frag.

2 handle frags

2 rounded base frags

1 rim frag flaring rim bowl

1 rim base frag.

5.10.91

MGS 91/5 (3) bag 1

larger lot coarse ware frag sherds

10 base frags coarse bowls/jars

1 base frag.

1 rg base rim frag

1 base frag fish plate

3 handle frags.

86 purple rim

1 piece rim

1 rim frag mortarium

1 rim frag w. pinched up feature

body frags rg

one with ribbing + roneletting

3 straight purple rim

5 rim frags echiurus bowl

1 rim frag. flaring rim bowl.

1 rim frag brown glaze plate

pebble

1 rim frag cooking ware

body frags cooking ware.

1 small bc lamp frag.

1 rim frag of echiurus bowl

rim

1 base frag brown rg open bowl rounded base rim

5 October 1991

The new worker (Yazi's daughter) clears down the newly scraped out depression in the stone pavement of the gate, preparatory to photography.

MGS 91/5

The stone structure abutting the SW corner of the S tower is emerging a little more clearly today. There are two good blocks beneath, making 3 courses in all so far. There is one largish block of tumble level with the second course; this will be removed shortly.

8.15 am. The first zenith of pottery is full already.

10 am.  $\phi$  end Roll 10C of depression in stone paving at gate-entrance. Also BTD

tumble in SW corner of 91/5 can be left alone; space is here for exploring to end (W face) of trench and reaching the wall abutting the tower.

11.20 am. a small stopper made from rg vessel found against abutting wall at W edge of trench, in vicinity of base of second course from top.

12.00 am. Work begins again against the circuit wall after the W boundary of the trench was reached. The deposit now in the S corner is a red-colored heavy soil.

This red soil is labeled (4) and the pottery bag changed



6.10.91

MGS 91/5 (4)

medium wt coarse ware body sherds

4 base frags coarse ware bowls/jars.

Some body sherds with green-brown tinge + 1 base frag.

2 rim frags echinus bowls inv.

13 small body-frags rg.

frags cooking ware

1 handle frag

1 profile rim frag.

2 rim frags flaring rim bowls

1 rg rim frag.

6.10.91

MGS 91/5 (4)

medium/large wt coarse ware body sherds

6 base frags coarse ware bowls/jars

2 profile rim frags.

2 rim frags rg bowls

body frags fine g.

2 handle root frags.

partially painted ware.

1 base frag rg plate bowl. inv.

1 body frag c/w with incised wavy lines.

body frags cooking ware

pebbles.

2 handle frags.

1 rim simple bowl

1 rim frag echinus bowl dark ware.

1 rim frag cooking ware

Sunday 6 October 1991

Weather: rain at first, delayed work by 1 hour, cloudy, but clearing; wind from NE.

Workers: Amouna, Yazid, Sara, Muthay, Khalid, Mhamed, Ali (7)

MAIN GATE.

Today is Tishreen Day, a public holiday, workers get double pay.

Today we commence work close to the circuit wall in the deposit of red soil described yesterday and designated (4). The soil is clayey and contains fresh chips of stone. The clayey soil breaks up first in small clods but it is not a hard deposit. There are random tumbled blocks at this level which is a 'pass' below that of yesterday's sketch, below which was not the fine dark soil as stated: we had come to the end of the dark soil in fact.

At a distance of 1.70m from the Tower (ie, of course, to the S) and stretching W to the structure abutting the tower is a deposit of crumbed limestone. I leave this for the moment.

The red soil is the deposit immediately after the construction of the tower.

7.40 am. The white deposit appears across the trench near the wall from 1.70m to the S. It scrapes hard.

Many of the fragments of pottery from the clayey reddish soil have, like, a mottled or greenish brown.

There is considerable bone, including a jaw bone + teeth.

As we work downhill to the W, the red soil deposit is deeper.

7.55 am. a thickened bone? spatula.

There is an occasional scattering of tiny specks of charcoal.

8.00 pm a worked object, perhaps not done.





6 October 1991

8 am. sky to the W is very threatening wind comes now from W. Thunder rumbles from time to time.

by 8.15 am. almost 2 zenith full of shards.

8.45 rain: breakfast recommence 9.15 am.

10.45 am. rain stops work again just after find of a head of the figure said to come from the top of the white crushed limestone stratum close to the wall structure abutting the tower.

STRUCTURE: we have cleared the top of still another course. It occurs to me to suggest that this structure is built exactly across that part of the circuit wall which is built with random rubble (as a restoration). This structure may well be intended to protect this perhaps weaker section of the wall.



7.10.91

MGS 91/5 (5)

medium-large wt coarse ware body shards

10 base frags coarse ware bowls/jars 1 base frag inv

1 base frag rg plate inv

4 rim frags echinus bowls

1 handle frag hipertite cente 'twisted'

2 rim frags flaring rim bowls inv

11 body frags fine rg app bowls

2 rim frags brown-rg bowl inv

8 profile rim jar/bowls

2 rim frags flaring rim bowls

1 lump black stone

Monday 7 October 1991

Weather: fine, but hazy; quite cool at first

Workers: Yazir, Sara, Amouna, Mohamed, Muthayy Ali, Khalid (7)

MAIN GATE

Work continues after yesterday's disruptions in the W sector of the trench against the abutting wall. From the abutting wall westwards the soil is black rather than yesterday's red nearer the circuit wall. Designated (5)

The fragments have that mousy greeny brown fungus like deposit on them.

We are clearing down here also to the limestone strata which is level here, with the bottom of the 3rd preserved course from the top (the upper course is very decayed)

0.45 am a clay loomweight

a very corroded bronze coin (?) = Antioch 92-92 BCE

i.e. proves this to be later occupation deposit? inv. 91.511 = coin no. 305

Is this the same coin as p.10? or inv. 91.509 = coin no. 122 City of Antioch

9.30 further loomweight fragments

At the SE corner of the trench the large stone rests on a projecting shelf, perhaps of foundation. Just to the N there is a large block of tumbled whose upper surface is very corroded. It is embedded in the crushed limestone deposit.

The rubble course stretches right across the trench, not just behind the abutting wall. The rubble seems to be only one stone deep: at the N end where this can be seen a decayed block projects up to the rubble course. On the trench wall above the rubble is powdered limestone and at the S end a large block of tumbled.

This seems to show again that the upper layer of crushed limestone is to be associated with the destruction of



7.10.91

MGS 91/5 (6)

medium-large wt coarse ware body sherds

1 base frag fine plate

8 base frags coarse ware bowls/jars

1 rim frag 'echinus' bowl

1 base frag to plaque, horse legs inv.

fine rg rim + base

13 rg body frags

3 handle frags 1 rim

2 profile rims

2 rim frags cooking ware

3 rim frags flaring rim bowls

1 rim frag echinus bowl

1 striated rim frag.

1 filthos rim frag.

7.10.91

MGS 91/5 (8)

v. small wt coarse ware body sherd

2 base frags (1 brown-rg)

1 fine rim frag rg inv.

7.10.91

MGS 91/5 (7)

v. small wt frags

inc. 1 rg base frag

7 October 1991

of the wall; the dark soil associated with the life of the walls (whether habited or inhabited) and the lower limestone with the construction.

Just above the limestone deposit the soil is very dark. We are opposite the second stone from the corner of the abutting wall the deposit is 7 or 8 cm deep. The soil is fine above it. The black now clearly stretches towards the abutting wall. In this soil the base is burnt black. The pattern is also blackened. There is a delicate rg rim.

Designate this (6)

8:35 am. Whilst scraping at the corner stone of the abutting wall to see if another block lies beneath, a rim frag of an echinus bowl emerges. I object it as (7).

11:15 am.

Some black soil still at W of trench in corner formed by abutting wall. The abutting wall extends through the bank, therefore the stone that formed the S end of the 1990 trench in front of the W face of the tower is probably leaning out of position since it is evidently inclined to S from vertical.

We continue with the black soil and then proceed deeper in this corner.

The soil is a light brown. Designated (8)

Another group commences on limestone deposit at circuit wall = (7)

In (7) almost immediately we come upon the ledge of the foundation course beneath the second block from the join of wall and tower; we continue to the N.



7.10.91

M&S 91/5 (5)

medium-large lot of coarse ware frag sherds

1 rg plate base frag.

1 rg worn base frag.

1 base frag coarse ware bowl/jar.

6 purple rims

5 rim frags flaring rim bowls.

15 frag frags fine rg bowls

1 rim frag v. fine rg bowl **in**

1 small amphora toe.

1 handle frag.

frags of cooking ware **knit frags**

rim frag dark ware

7 October 1991

(8) a little below the light brown soil of this stratum appears to be the crushed limestone.

11.50 am a bronze coin from this stratum = ~~91.504~~ or 91.514? both Antioch. 92-72 bce.

This light brown soil is a thin deposit beneath the black, recently removed, and <sup>above</sup> the crushed limestone.

(7) there are still perhaps traces of a light brown soil above the white limestone, or mixed in with it



8.10.91

MGS 91/5 (7)

medium-small lot of coarse ware body sherds

34 base frag bowls 1 base frag fish plate

4 rim frags echinus bowls

pebbles

body frag rg

1 rim frag glass

rim frag shap, w profile bowl.

1 rim frag cooking vessel.

1 rim frag gray ware echinus bowl.

Tuesday 8 October 1991

Weather: clear + cool, slight breeze from NW

Workers: Yazir, Amouna, Ali, Khalid, Sara, Muthayir, Ahmad (9)

MAIN GATE SOUTH.

At the join of South Tower and outer face of circuit wall we continue removing the curved limestone stratum in which seems mixed some light brown soil. Close to this join, at a distance of one block from the circuit wall, almost with the first stroke of the pick, emerges a fragment of a bone plaque, left hand side, with plume-helmeted soldier holding a spear which forms the left boundary of the composition.

This object comes from the junction, I suppose, of the white limestone and the brown soil.

At this point the true tower wall is emerging a little S of the decayed limestone blocks revealed in 1990.

One group works at the W of the trench against the face of the abutting wall to investigate the foundation of this wall.

The deposit is hard-packed powdered limestone filled with fist-sized chunks of limestone. This must be (9)

By 7.15 am there are a few sherds, but perhaps these come from residue of the light-brown soil (8)

As we progress, it seems that the abutting wall is built on this limestone deposit.

In (7) as we approach the E face of the abutting wall there is more of the light-brown soil, though we had seemed to be scraping on powdered white throughout.

7.30 am. (9) we strike bed-rock and work towards clearing this small investigation area.



8.10.91

MGS 91/5 (10)

- large wt of coarse ware body sherds
- 1 amphora toe
- 1 handle frag.
- 3 base frags
- 4 purple rim bases
- 2 watched rim bowls
- body frags of cooking ware
- body frags semi coarse rg
- 2 rim frag echinus bowls
- 1 frag frag with painted ? ideograms ?
- 1 frag frag green glaze open vessel.
- 2 rim frag coarse ware bowls
- body frag with red-brown paint + impressed triangles
- 2 rim bases flaring rim bowls
- frags of clay tanour.

8.10.91

MGS 91/5 (9)

- tiny wt coarse ware body sherds
- 1 rim frag flaring bowl red paint
- 1 rim frag echinus bowl
- one small frag.

8 October 1991

(7) midway approx. in the trench against the circuit wall is a large block of rubble which is decayed on the upper side but has a sharp lower edge and also at the side nearest the wall. I take this large block as the S extent of further excavation below the level of the foundation ledge.

The foundation ledge seems composed of a quite thin stone and there appears to be another block below the ledge itself.

<sup>10.11.91</sup> The S face of the tower is not clear from circuit wall w to the abutting, though only the upper edge is visible by 10.30 am.

At the join of tower and circuit wall there are clearly some blocks which interlock; but, at the level of the ledge, there is a clear gap of ~15 cms between tower and the wall, into which a fine black soil-deposit had blown. Further excavation at this point will show whether any constructional conclusions can be drawn.

In this section against the walls on the E and N the deposit has small limestone chips mixed in but there is much light brown soil also. As I write an amphora toe emerges from a level about 20 cms down from the ledge's surface from the chippy light brown soil. This deposit is (10) and the pottery and bone are kept separate.

By 10.30 am. a small section of (9) is completed down to bedrock and swept. The bedrock is very uneven and filled with shadows. Work then moves to the W of the S Tower.

11.30 am  $\phi$  Roll II c 25-31 of bedrock and abutting wall from S: difficult to take

Roll II c  $\rightarrow$  29 (or so)  $\phi$  of Hester's trench (tumble) and Radis trenches at 1 pm.



8.10.91

MGS 91/6 ①

Small wt work were body shed

7 rim frags small bowls

1 rim frag by moulding on interior

1 rim frag cooking vessel

body frags cooking ware

8 October 1991

MGS 91/6

I give this designation to the continuation of work of 1990 which disclosed the W face of the S Tower

On the surface is found a corroded lead in.

The width of the excavation area is approx. 1 m.

11:35 am. work continues in ⑩ work, W from the circuit wall at the moment body frag of open green glass vessel

a number of small fragments of bone also.

There is also a fair amount of pottery, 1/2 zensil by 12 noon.

12:30 a number of large fragments of amphora/jar coming from ⑩ in an area near the abutting wall and just below the level of the lowest course of the abutting wall.

We are coming to a hard packed deposit close to east wall.



9.10.91

MGS 91/5 (11)

medium wt coarse wave body shed

1 base ring box

2 mm frags small brds

1 mm frag gray wave.

Wednesday 9 October 1991

Weather: clear, cool at first, slight breeze.

Workers: Ameruna, Yazi, Sara, Muthay, Khalid, Ali, Mohamed (7)

MAIN GATE. 91/5 (11)

The dark soil deposit is completed it seems, so we commence on the white crushed limestone.

The dark soil lay against the S wall of the Tower and E of the abutting wall. Against the circuit wall at the level of the bottom of the 2<sup>nd</sup> course of the ledge the deposit is not the dark soil but the crushed limestone. In the deposit are small chips of limestone.

I shall take a small section down to bedrock, encompassing the corner of the abutting wall and the third block of the circuit wall from the join with the tower. Further S of that is the large block of rubble previously described.

In some cases the limestone deposit could well be the continuation of that excavated some days ago, but I designate it all from today as (11)

6.40 am. There still always seem to brown soil mixed with the limestone rubble.

8.15 am. after a depth of approximately 0.22 m (against the circuit wall) the crushed limestone rests on another stratum of dark brown soil.

A third of a quintal of coarse wave frags has been recovered so far down towards the abutting wall, bed rock has appeared in one spot. We continue with all the white limestone strata.

8.15 am.  $\phi$  and Roll 11c showing progress in 91/5, to finish the roll, and change film ready for J2.

The black stratum stretches W from the circuit wall about 0.5m



9.10.91

9/16 ①

Small wt coarse ware body sherd

2 handle frags

4 & base frags

1 rim frag bowl w. red paint

1 rim frag flaring rim bowl

3 & rim frags shallow bowls

9 October 1991

9/16 ①

Work continues Nwards along the face of the Tower (W face)  
By the conclusion of yesterday's session, the beginnings of the foundation ledge had been revealed immediately below the level of the base of the block that was seen in 1990.

The deposit here is a very hard packed coarse limestone mixed with chips and chunks of limestone, sharp edged and broken for construction of wall.

At the bottom of the foundation ledge is ~~bed~~ bedrock  
A few frags of coarse ware pottery emerging.

12.30 pm.

Good progress has been made towards the N end of the trench clearly the foundation-course ledge over bedrock

At the SW corner of the Tower, the abutting wall is very crumbled. There is no block immediately against the corner where it is one block wide rather than two.



9.10.91

MGS 91/5 (12)

small wt coarse ware body frags

1 amphora toe

4 rim frags 'local' echinus bowls

100+ purple on frag.

9 October 1991

91/5

In the lowest three courses, the Tower abuts the circuit wall. The fourth course from the bottom is decayed but looks like it too abutted. The fifth course rests a little over the Tower and on to the circuit wall; it rests on Tower by a length of 20 cms.

Perhaps this dark brown stratum beneath the limestone means that the circuit wall at this point was completed first and the soil fill associated with walls (WTC S + N Towers) was later covered by a layer of crushed limestone + limestone chips when the Tower was being constructed.

It is strange though that the soil stretches for only c. 50 cms. It is not located inside a foundation trench.

As we clear the white limestone, clearly there is limestone beneath the dark-brown soil at the wall.

11:15 Begin on the new stratum of dark soil (12)

There is quite a sprinkling of small chips of limestone in this deposit.

At the gate there is plentiful use of limestone plaster for bedding layer: there is a good example just behind the W face of the S Tower. In one of the interstices of the circuit wall in this trench (in the foundation courses) river mud is used to back a gap.

12:30 pm. We are scraping down and cleaning the bedrock. 91/5.



Thursday 10 October 1991

Weather: cool and first haze in distance, fine.

Workers: Yazid, Sara, Amouna, Frieda (Mehmed), Khalid, Muthay, Ali (7)

MAIN GATE

9/5

Work here today consists essentially in clearing.

1) the upper limestone hard-packed deposit in the S sector of the trench i.e. from the corner of the abutting wall to the S bank of the trench.

2) the walls

3) the bedrock in the N sector of the trench. There is still a little of the red-soil-above-bedrock near the abutting wall.

The abutting wall can be seen to be founded on hard-packed limestone layer, and was therefore constructed after completion of the tower, but seemingly before much of the life of the tower, though the black soil could have been removed to find the hard packed floor at a later time

but what about the interlocking (by 20cm) of 5<sup>th</sup> course of abutting wall?

∴ constructed at same time?



10 October 1991

9/6

Work continues here near the N end of the W section of the 1990 trench. Large tumbler at the N end of the section will form the boundary of the excavation; we can then proceed with cleaning.

Small lot of fill from cleaning.



10 October 1991

91/7

This is a 1m x 1m in the SW corner of the inner room of the South Tower.

In 1990 this area was excavated to a fine floor of reddish mud dried and packed in reasonably well smoothed.

As mentioned previously the point of this spit (91/7) is to discover whether a ledge ran around the wall as in the N Tower.

We quickly discover that the mud floor is approximately 3-5 cm thick, that beneath it is crushed limestone, and that the ledge is indeed present.

We will clear this spit level with the ledge

11 am  $\phi$  13c 1-18 206/3 (AW2)

from many directions with details of cistern-tank mud-pits in central section depression in NE corner. 2 different floor levels in E sector (from N)

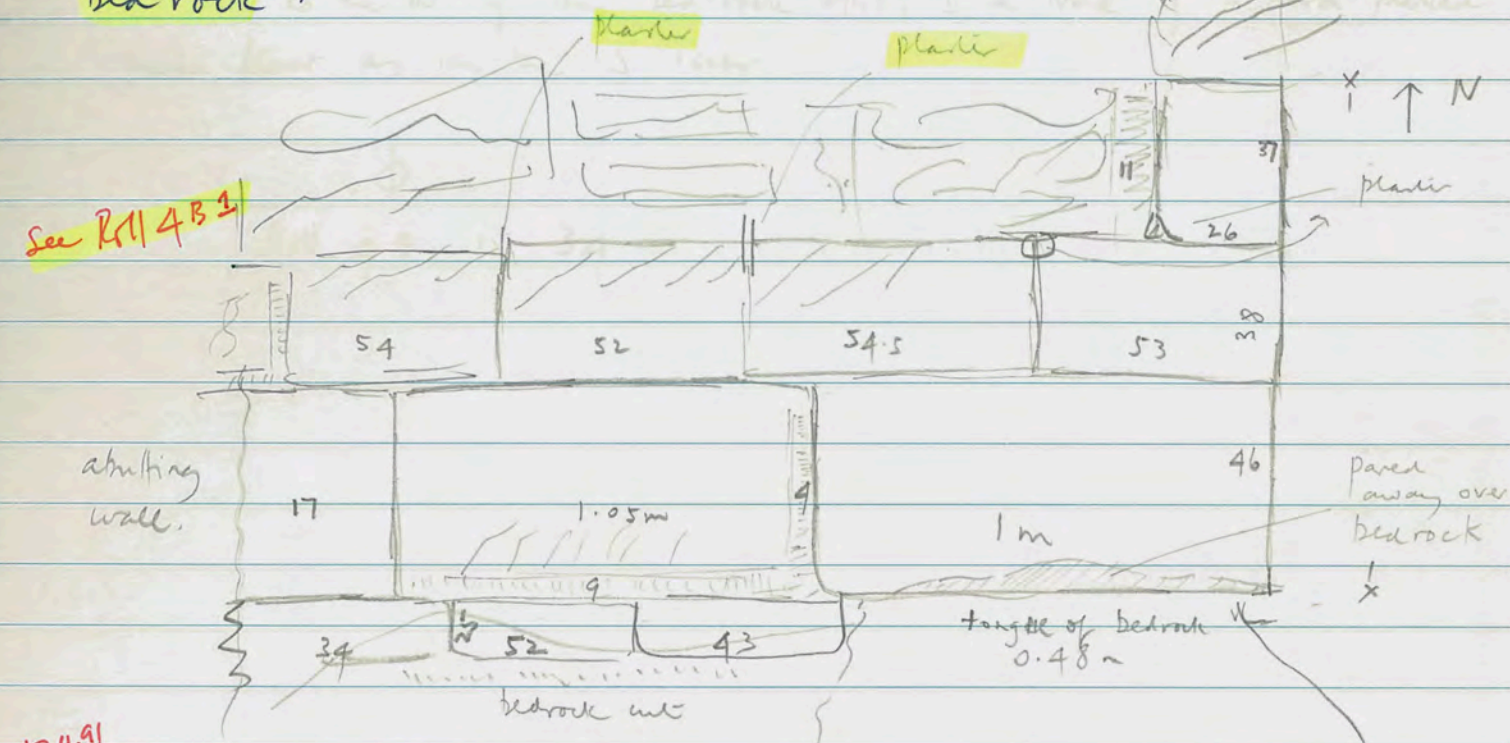
also Btw on Roll 4 B <sup>5-14</sup> 1-14.



10 October 1991  
91/5

overlooking block

At the join of the S tower and the outer face of the circuit wall, the foundation course rests on bedrock. Beneath the first block of the Tower, the bedrock has not been cut into a foundation trench; the foundation blocks are found on each side of it, and the bottom outer edge of block mentioned has been pared away slightly to fit the slight camber of the bedrock.



See Roll 4B3

10.11.91

? S wall of South Tower

? E Wall of South Tower, W of Circuit Wall.

x - -x Tower abuts circuit wall

11.30 am comprehensive  $\phi$  of all of S Tower from many angles Roll 13  $\rightarrow$  end



Saturday 12 October 1991

Weather overcast, cool, breeze from NW

Workers 6 as usual.

Continue with cleaning of trench at Main Gate North ready for photography.

By 10.30 am all finished: the limestone floor, the ledge, the drain and the bedrock in the SE corner of the trench.

Just to the N of the bed-rock spit, is a trace of a hard-packed mud floor as in the S Tower.

10.30  $\phi$   
R4 4B 15-34