

9 September - 17 October

1991



A4 NOTE BOOK

No. 595

R. Vrdolj 1991

"W. house book"
- 208/9/1+9/7



819-991

- 1- fragment rim red glaze. P
- 7 fragment rims Baday shards.
- 1- fragment Base Amphora.
- 5 fragments Bases Baday shards
- 1- fragment shards. looking B and
- 1- hundred Baday shards

9-9-1991 5-workmen

Hadli vaser 2-tuna-3-Kalaf-4-sadi-5-Zepie

Haus N.I. W.

today we starting cleaning the East of ahaus
which lay the well.

9-9-1991 - West house No I (Boulk)

3 fragments of Casnow Baday shards

2. fragment of hand of Baday shards

3. fragments from Bas Baday shards

1. fragment Bas also black layer

7. fragments of rim Baday shards

10-9-91

1- Zakeie-2-adi-3- Hadli-4- Sahha-5- Toma-6- Hajie

West - house N.I. = 207/3 - 208/9?

today we continue the work on this area which consist of from the Boulk. it lay the north the well it is very stony the soil has color B brown

△ West House N.0 I Coin B Brown

△ - fragment of lamp.

10-9-1991
West house - (Bouk)

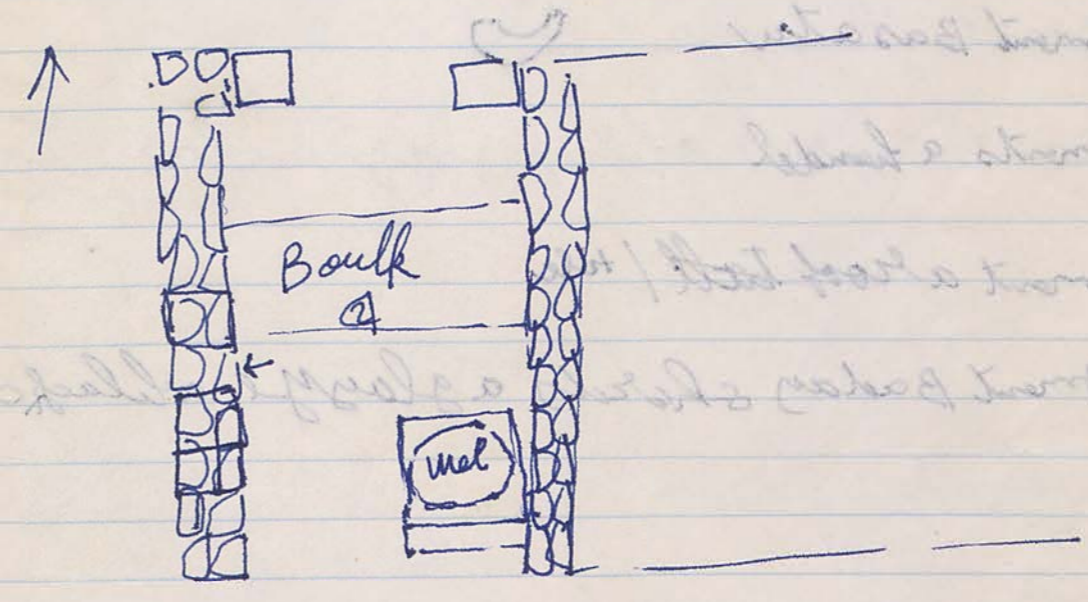
- 2 - Mims & carynos Baday shards
- 1 - rim Baday shards
- 7 - Bas fragments
- 1 - Bas rim red color inside
- 1 - Bas ingitatum fragments
- 1 - Bas fragments tan
- 3 - Baday shards cooking local
- 2 - fragments a taller
- 2 - fragment handles Baday shards

11-9-91
6 - workmen.

West house N.O. I - Bouk.

Today we continue the work on the Bouk which seemed stoney fallen. Also the debris is gray and a lot of pottery it has

② it's Bronze Arcaol?



③ Nail from the Bronze

⑩ fragment of Feqhoreane 91.044

⑪ fragment Bas plate with stamps 91.058


11-9-991 - West house N. o. I (Baulk)

12- fragments Mians Baday shards

10- fragments rims eaymas D

6- fragments rims a skala

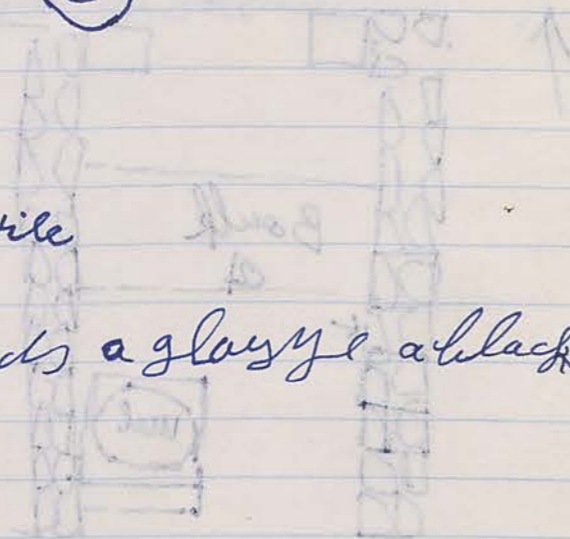
8- fragments Bases Baday shards

1- fragment Basater 

4- fragments a handel

1- fragment a roof tall / tile

2- fragment Baday shards a glayze a black color



Faint mirrored text from the reverse side of the page.

Faint mirrored text from the reverse side of the page.

Faint mirrored text from the reverse side of the page.

14-9-991 111-P-41 4
6- workmen See AW

Faint mirrored text from the reverse side of the page.

Faint mirrored text from the reverse side of the page.

Faint mirrored text from the reverse side of the page.

Faint mirrored text from the reverse side of the page.

Faint mirrored text from the reverse side of the page.

Faint mirrored text from the reverse side of the page.

Faint mirrored text from the reverse side of the page.

Faint mirrored text from the reverse side of the page.

Faint mirrored text from the reverse side of the page.

Faint mirrored text from the reverse side of the page.

Faint mirrored text from the reverse side of the page.

Faint mirrored text from the reverse side of the page.

Faint mirrored text from the reverse side of the page.


14-9-991

4- fragments rims a caryous plate))

3- fragments rims Baday shards

4- fragments Bases Baday shards T

1- fragment Basa Tu

2 fragments a handel 

1- fragment handel a dahl

1 fragment shards a black glyze couler

15-9-991

7 workmen + ^{bles} Amshai

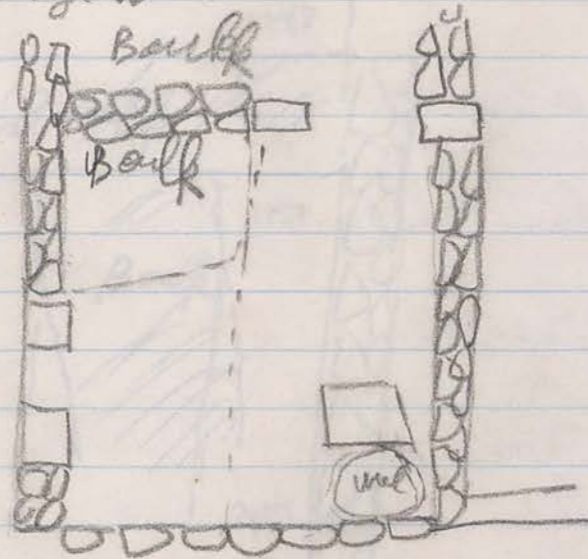
5

west bay N. of Baull

5 stone Bead - ?

6 Coin? Bronze 91.062 Seleucus I.

7 Bronze Nial



8 West bay N. of Baull Amphora with inscription 91.068 (183-150 BC)

9 fragments from glass 91.051

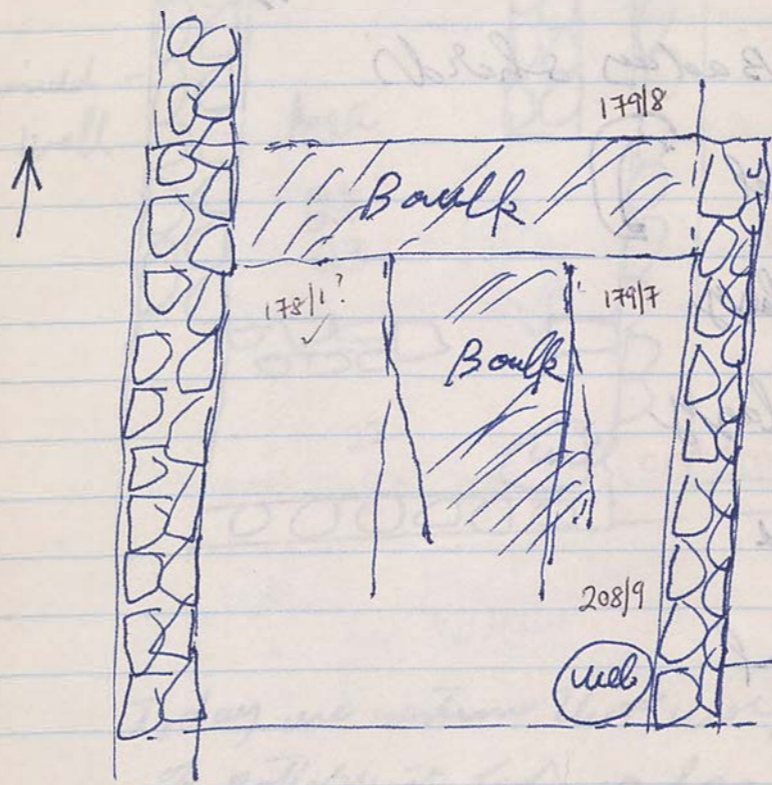
15-9-91

- 4 fragments Bases Baday shards
- 1- fragment rim Baday shards.
- 2. fragments a handle Baday shards

16-9-91 (7 workmen)
West house No I Baulk

179-1-51 6

Today we continue the work on the Baulks. The firestone with which lay on the south coming from the north to south and the other coming from E-W-



- (2) Bronze Nid in the south Baulk
- (3) Needle Headed from the Bone.

16-9-991

13- fragments of rims & carynous

3- fragments of rims & shalou

11- fragments rims of Baday shards

13- fragments Bases Baday shards

1 fragment a handel

1 fragment a black glassy

1- fragment a green glassy

1- fragment a gouged

1- fragment cooking Bowl

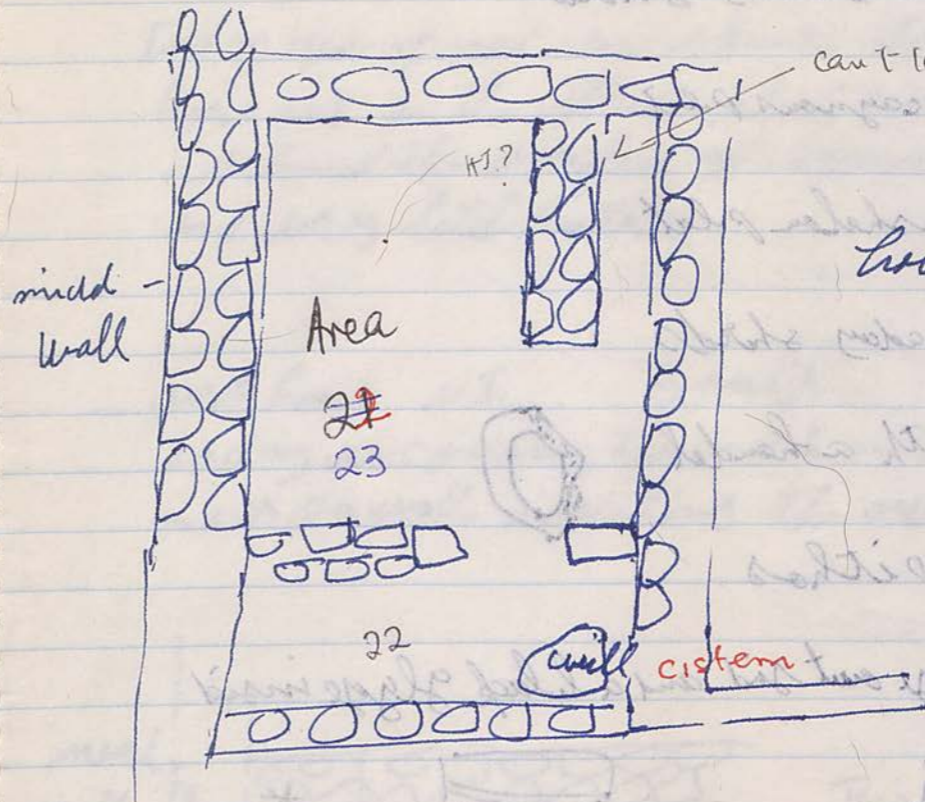
17-9-991

west hours N.05

7 workmen

Bolk

7



today we continue that work onto this Bolk and a lot of pottery it was also we a riped to find a cupation a floor level which a lot could

1st occupation floor level - red.
= bedrock

17-9-991 West house N.I Baulks

9 fragments Bases Badon shards

3 fragment rim e cagnous plate

4- fragments rims a shalon plate

4- fragment rims Badon shards

1- fragment rim with a handle



1- fragment Bas a pithos

1- fragment red glaze outside and a black glaze inside

1- fragment in jar



*

9- fragment Bases Badon shards

18-9-991 - 7-Workmen

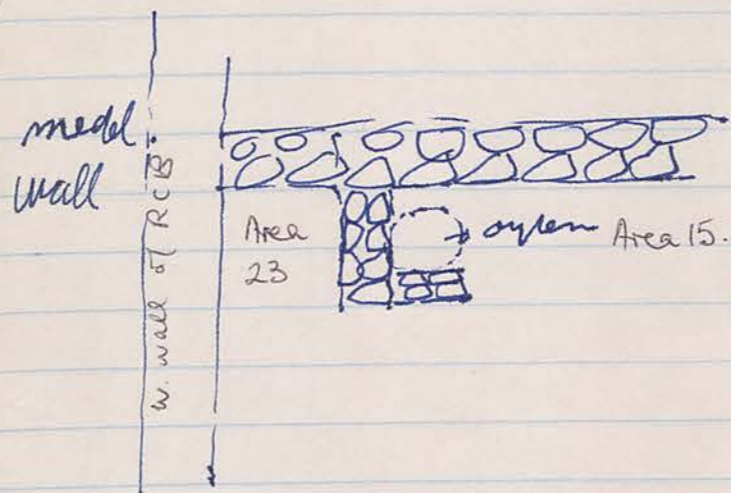
17-9-81 8

129/2

Today we opened new square it is lies on the north
house N.I on the street which coming from the N-S
seemed the surface of square were stones
and very little pottery

- West house N.I Baulks

Today we continue the work on the Baulk North
and it is a wall attaching the oven.



This is oven under W. wall
of Area 13? Yes,
2 oven?

18-9-991

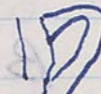
from where? is this Baulk or 179/2


3 fragments ^{rims} & cagnous war

1- fragment rim Baday shards

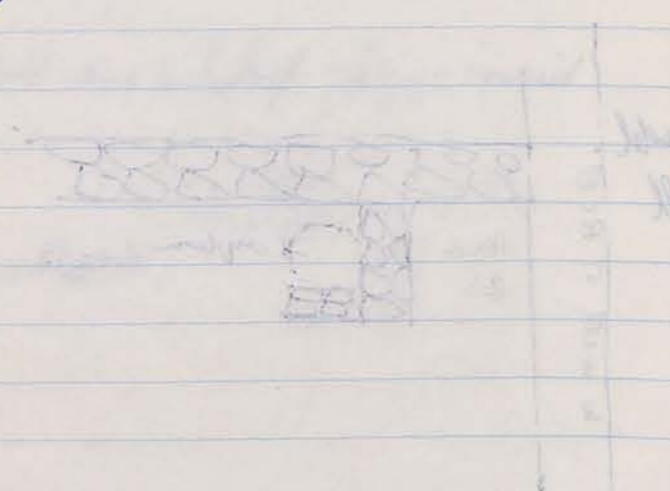
1- fragment a rim of Baul profile internal 9

5- fragments Bases Baday shards

1- a handle Baday shards 

2 fragments joined 

4 fragments cooking Baul



19-9-991 - 7 workers

179/2

today we continued the work on this stair which appeared very stoney

[1] This level is surface and it is very rough pattern.

[2] This level consist of a wall stone coming from the south to north

[3] This level lay to E of level N 02 and it is a stoney fallen.

19-9-991

1- rim fragment Baday sharks B

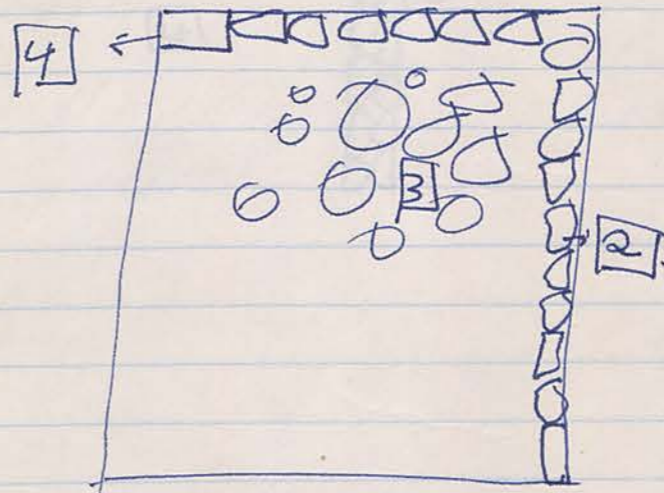
1- fragment a tail

21-9-991

179/2

[3] Today we continue digging on this locus which consist is of a stones foundation.

[4] This locus lay on the rock square and it consist of from stone well and it a tached



The the wall (acquired) from the E side.

[3] 14 Bronze vials

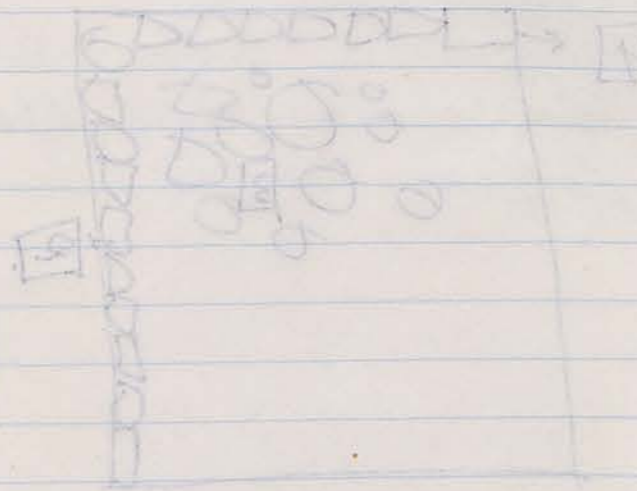
21-9-991

179/2 -

4 rim fragment Baday shards

3 Bases fragment Baday shards

1 - rim fragment e. caryonous



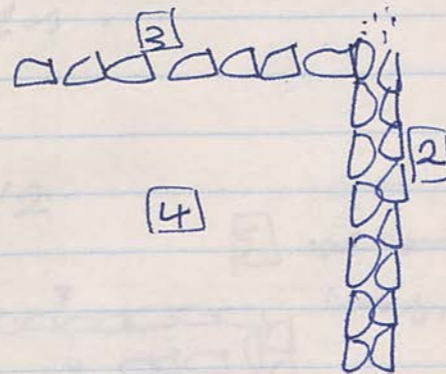
22/9 991

7 work men

179/2

[4]

today we continue the work on this square. it still contains the stone. and the dirt appeared a brown color



22-9-991 179/2 [4]

2- fragment rim & cognate used

1- fragment rim of flare P

1- rim inflectionum.



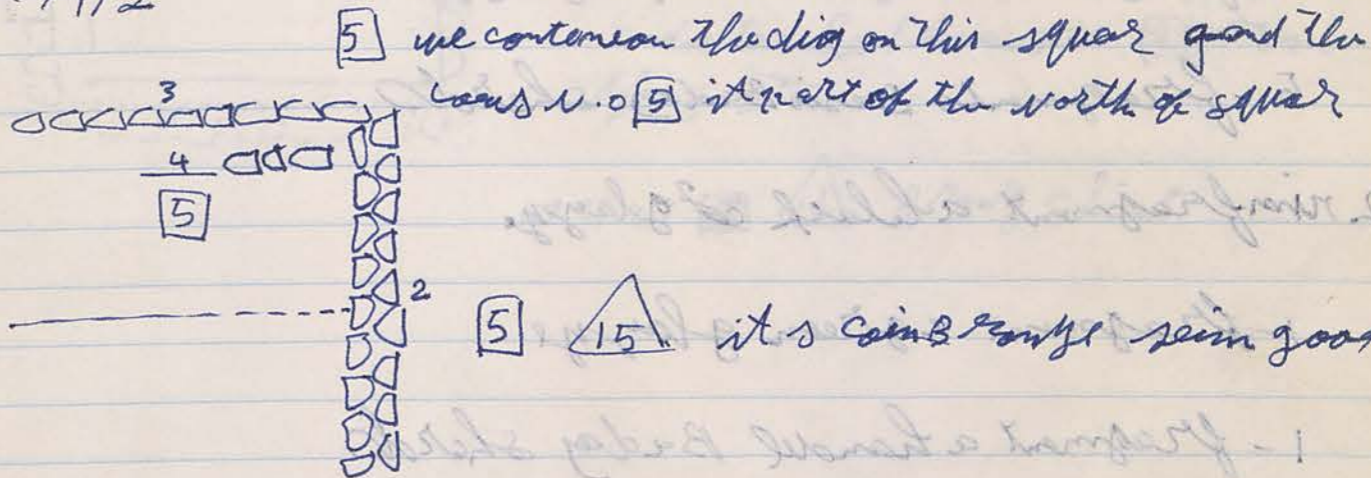
23-9-991 8 work members Kaldie

12

179/9.

today we start dig a new square which lay of north the courtyard the house No I. (= House 2) it's.

179/2



[5] we continue the dig on this square and the house No 5 it's part of the north of square

[5] 15 it's coin & some seem good

23 19 - 991

17 9/2 [4]

5 rims earthenware flat

5 - fragments rims Baday shards

1 - fragment rim a black glaze

5 - fragments Besio Baday shards

2 rim fragment a black & glaze

1 - fragment a green glaze

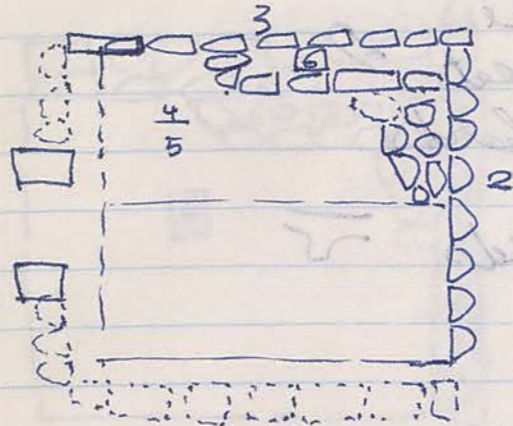
1 - fragment a handle Baday shards

24-9-991 - 8 workmen

klas Raldaci

13.

179/2 [5] This locus lay on the north half of the square
Also it is between the Locus No. [6] and the
west side of the square.



[6] This locus consist of stone
Bethpech & also it attached
Locus N. 03 from the north
and attached locus No. [2] from
the E side.

179/21 [3] [16] Brandy sheet

24/9-991
17912 / [5]

54 fragment rims acynous.

- 1- rim acynous a gray glayge
- 2- rim fragment a shallow plate
- 10- fragments of rims Baday shards

- 34 fragment Bases Baday shards
- 1 fragment Bas Ciarcober
- 1- fragment a handel with rim
- 3- fragment a handel

25-9-991 -
17912

9 workmen + Foga

[5] Today we continue the on this locus which appeared very soft on the south and a lot of pottery. it has.



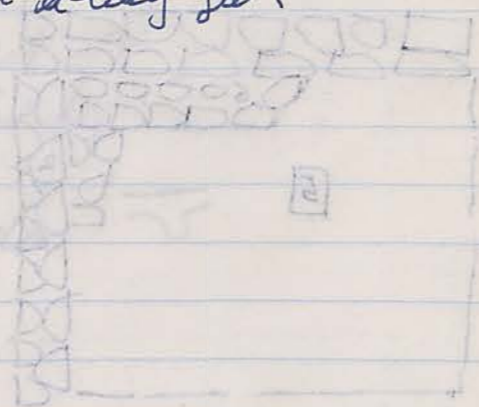
25-9-991

179/2

5

3 fragments rims Baday shards

a lot of shards cool Ba complet a leg jar



26-9-991

9-workmen

155-P-25 15

179/9

1 We continue the work on this square which appeared grassy on stones fallen and dirt are soft.

179/6-

1 To day we start dig on this square which lay on the E-st of square 179/9.

26-9-991

179/9 [1]

4 fragments rims Baday shards P

2 fragments rims eCagnous.

3 fragments bases Baday shards

28-9-991-

9- workmen

1 - fragment rim Baday shards

2 - fragment rim eCagnous

3 - fragment rim Baday shards

4 - fragment rim Baday shards

5 - fragment rim Baday shards

6 - fragment rim Baday shards

7 - fragment rim Baday shards

8 - fragment rim Baday shards

9 - fragment rim Baday shards

10 - fragment rim Baday shards

11 - fragment rim Baday shards

12 - fragment rim Baday shards

13 - fragment rim Baday shards

14 - fragment rim Baday shards

15 - fragment rim Baday shards

16 - fragment rim Baday shards

17 - fragment rim Baday shards

18 - fragment rim Baday shards

19 - fragment rim Baday shards

20 - fragment rim Baday shards

21 - fragment rim Baday shards

22 - fragment rim Baday shards

23 - fragment rim Baday shards

24 - fragment rim Baday shards

25 - fragment rim Baday shards

26 - fragment rim Baday shards

27 - fragment rim Baday shards

28 - fragment rim Baday shards

29 - fragment rim Baday shards

30 - fragment rim Baday shards

31 - fragment rim Baday shards

32 - fragment rim Baday shards

33 - fragment rim Baday shards

34 - fragment rim Baday shards

35 - fragment rim Baday shards

36 - fragment rim Baday shards

37 - fragment rim Baday shards

38 - fragment rim Baday shards

39 - fragment rim Baday shards

40 - fragment rim Baday shards

41 - fragment rim Baday shards

42 - fragment rim Baday shards

43 - fragment rim Baday shards

44 - fragment rim Baday shards

45 - fragment rim Baday shards

46 - fragment rim Baday shards

47 - fragment rim Baday shards

48 - fragment rim Baday shards

49 - fragment rim Baday shards

50 - fragment rim Baday shards

1

2819-991 179 19 [1]

- 6 fragment rims Baday shards
- 2- fragment rim & shalon (red color)
- 7 fragment Bases Baday shards
- 1- fragment Bas red color (glazy)
- 1- fragment a handle Baday shards
- 1- fragment cooking Bowl
- 1- fragment red color glazy.

2819/991 179/6 [1]

- 3- fragments rims Baday shards
- 3- fragments Bases Baday shards.

29-9-99

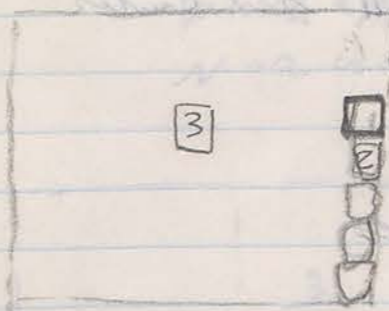
9- workmen

17.

179/6-

[2]

This locus consist of a wall stone coming from the north to south.



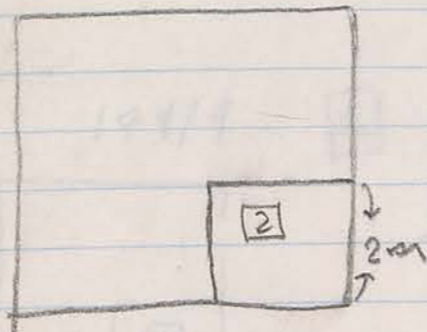
[3]

This locus was west locus No. 2 it is very stony and the soil color brown and it soft.

179/9-

[1]

today we continue the work on this locus which is very soft and it may be court yard for the house No. 2 which we start.



179/9

[2]

This locus lay on corner south west of square it is 2m x 2m and the dirt is very soft.

3019 1991

17916

4

4 fragments rim Baday shards

1- fragment rim acynous

3 fragments Bases Baday shards

2 fragment handel Baday shards

1- fragment handel dahall

1- fragment cooking hall

3019 1991

17919

2

4 fragments rim Baday shards

3 fragments rims acynous plot

4-2

9 fragments Bases Baday shards

1- fragments Bas a toe

1- fragment gased Baday shards

1- fragment shards glesyed

3- fragment cooking Ball

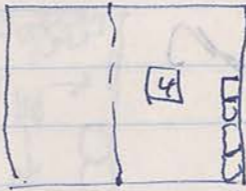
1- fragment handel Baday shards

179/6-10 I/16/1991

9 workmen

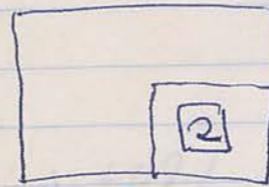
19.

4



today we continue the work on this locus and steel the stone fallen around. also we a tested to level depth 80 cm on the northern half of the part it a part the dirt was soft and acihay gray.

179/9-



2

Today we continue the work on this locus which a need mixed with pappally and it's a lot of pottery.

pitky

179/6

4



fragment rim with neck



1-10-991

17919 [2]

19 rims B fragments B day shards

2- fragments Bases B day shards

1- fragment Bas a tile

2 fragment handel with rim B day shards

1- fragment red glayze.


1- fragment fegoreen 

1-10-991

17916 [4]

5- fragment rims B day shards.

6 fragment rims a ceynous Plet

4 fragment rims a shallow Plet 

5- fragments Bases B day shards

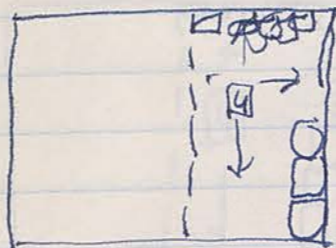
3 fragments cooking Bowl

2/10/1991

9 workmen

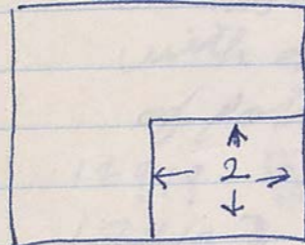
17916 [4]

today we continue the work on this locus. and we well on the north just a stone fallen



17919 [2]

Today we continue the work on this locus which opened soft and Barelly



17919 [2]

17 a had f fegoreen.

17919 [2]

18 fragment fegoreen

5-10-991 17916 [4]

7 fragment rims Baday shards

5 fragments Bases Baday shards

2 fragment handel Baday shards

1- fragment shards of red glype

1- fragment a tail

5-10-991 17919 [2]

10 fragment Bases Baday shards.

9 fragment rims a cagnous plat

8 fragment rims Baday shards.

5 fragment rims a shellon plat

3 fragments handel Baday shards

5- fragments shards cooking ware

5-10-991

17911 [3]

4 fragments Bases Baday shards

1- fragment rim Baday shards

2- fragment rims shellon plat

1- fragment handel

6-10-991 9-workmen

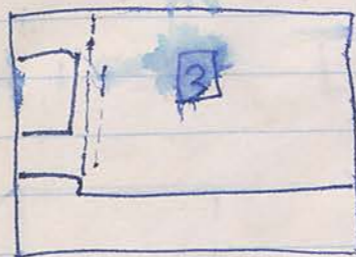
17916-

[4] today we continue the work on this locus which opened soft soil and a lot of pottery



17919

[3] today we continue the work on this locus which opened aches of clay and a lot of pottery.



17919 [3] 21 comb B range

17919 [3] 22 half bad pottery

6-10-991 17919 [3]

- 7 - rims fragments acaagnous Plect
- 6 fragment rims Baday shards
- 6 - fragment rims a shallow plect

11 - fragments Bases Baday shards.

5 fragments shards roofing Baul

6-10-991 17916- [4]

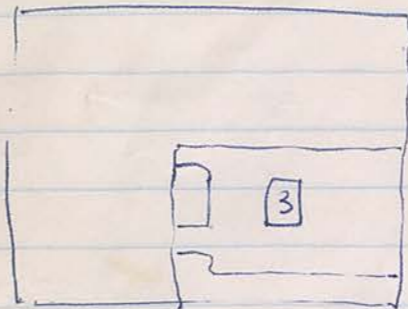
2 - fragments rims Baday shards

3 - fragment Bases Baday shards

2-10-991

9. work man

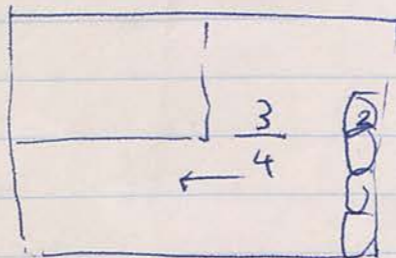
17919 [3]



Today we continue the work on this locus and the soil appeared very soft and the Bedrock it's continued from the Est. it's depth 30 cm from the top south it's on his floor from the Bedrock to.

- 17919 [3] 2.4 Loom wheel
- 2.5 Circular Brown
- 2.6 Stone Basalte

17916- [4]



To day we continue the work on this locus and the dirt very soft

7-10-991

17919 [3]

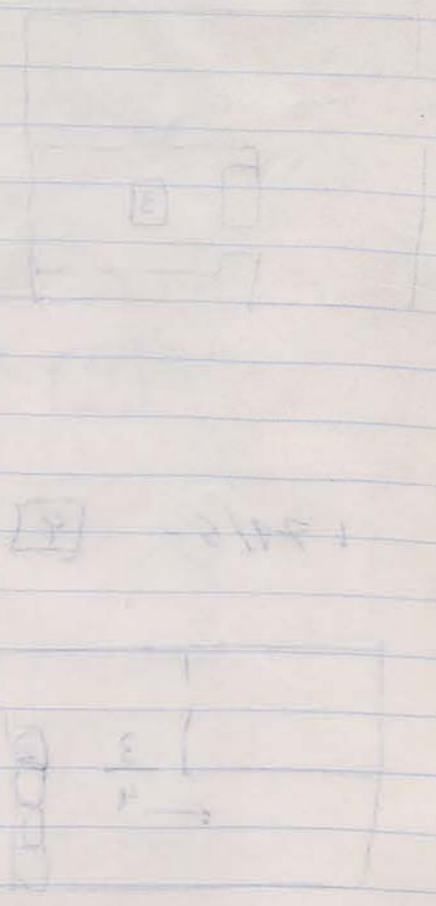
7 fragments rim acygnous ware.

3 fragments rim Baday sherd.

3-fragment rims & shallow plate.

1- Base Baday sherd.

2 fragments handle sherd.

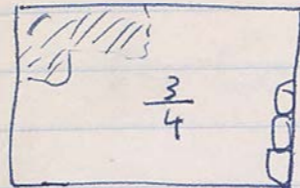


8-10-991

17-01-5

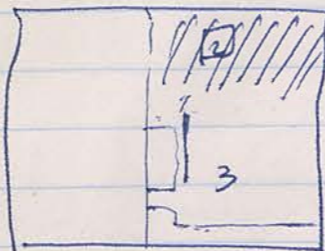
10-10-91

179/6 - [4]



Today we continue the work on this locus which covered all the square and the direct angle bearing corner.

179/9 - [2]



Today we continue the work on this locus which lay beneath the surface it is worth the square

10-10-94

179/6 [4]

- 2- fragments rim Bades shards
- 3- fragments Bases Bades shards
- 1- fragment handle

10-10-91 179/9- [2]

- 3 fragments rim Bades shards
- 2- fragment rim a shallow
- 11- fragments Bases Bades shards
- 1- fragment Basa tee
- 1- fragments rim ecygnas with Bas.
- 6- fragments rim ecygnas Plet.
- 1- fragment a handle

saturday

[Faint, mostly illegible handwritten notes and sketches on the right page, including a drawing of a plant or object at the bottom.]

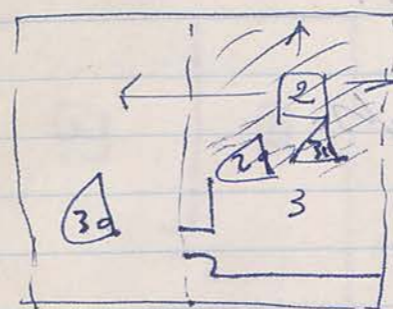
12/10-991 179/9 [2]

- 4 rims eayrous Plet
- 2- rims fragment ^{glass} (a shallow) →
- 1- fragment rim a flary
- 2- fragment rims a shallow Plet
- 1- fragment rims Baday shards.
- 2- fragments Bases a toe.
- 1- fragment Bas Baday shards.

17919 [3] - second Bay.

- 8 fragments rims a caryous Plet.
- 11 fragment rims Baday shards
- 8 fragments Bases Baday shards.
- 1- fragment Bas ingutarum
- 7 fragment Bases Baday shards
- 1- fragment rondel Amphorate
- 1- fragment a tail

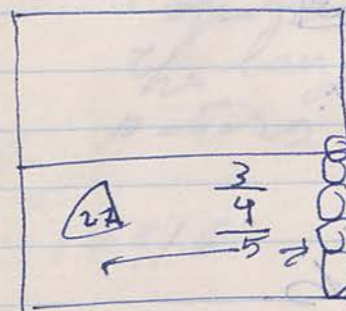
3-10-91
17919 [2]



Today we continue the work on this area which opened very packed and a lot of pottery shards and Bone.

17919 [3] this was begun already on the south & west. it is in side the the Bass.

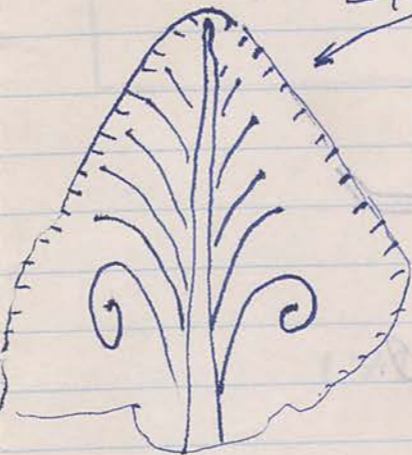
179196 [4]



Today we continue the work on this area it is soft and

[5] this area consist of a floor layer it is not a the depth 5 cm only. after that starting the dirt open up and a lot of shards.

17916 [5] 22 a shard pottery sized like rice



17916 [5] 28 iron nail

179191 [3] 29 small jar comlet But it's broken.

17919 [2] 30 glass.

17919 [3] 31 iron Corral

13-10-91 17916 [4]

- 2 fragment rims ecaynous plat
- 1- fragment rim a shalou plat.

6- fragments Bases Baday shards.

1- fragment Bas red glassy.

2 fragments handel shards.

1- fragment handel amphira.

2- fragments red glassy-shards

13-10-91 17919 [3]

12- fragments rims ecaynous plat.

5- " " a shalou 4

1- fragment rim Baday shards.

3- fragment Bases Baday shards.

10- fragments shalou shards.

13-10-91- 17916 [5]

10- fragments rims ecaynous plat.

5- " " a shalou plat

13 " " Baday shards.

2 " " frags.

14 " " Bases Baday shards.

1 fragment Bas circular.

2 fragments handels amphira.

2 " " Baday shards.

9 " " cooking Baul.

1- fragment lamp.

13-10-91 17919 [2]

6- fragment rim ecaynous plat

2- fragments rims a shalou plat

6 " " Baday shards.

11 fragments Bases Baday shards

2 " " handel 4

3 " " cooking Baul

1 fragment a black glassy

1 " " a tail

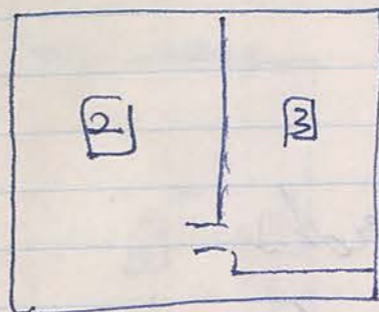
14-10-91

17919/

NE

[3]

today we continue the work on this which are red mixed with a lot of pottery and Bone. Also there are a layer whit color look a layer flour and beneath it a hard layer. its color is brown dirt and beneath it a shay gray color. which lay on the land the locus N.0 [3] which consist of Bass.



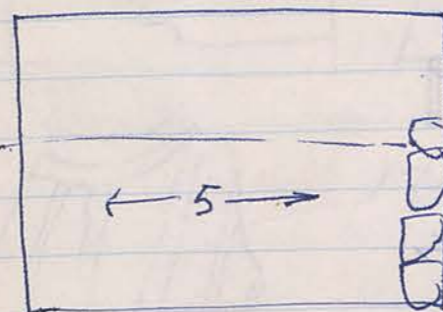
17919 [2] West

this locus lay beneath the surface and it is covered all the square and it consist of the layer of packed stone Bappalay and pottery and a Bone.

17916

[5]

Locus N.0 5 it's looks the same locus N.0 [2] on the other side 17919. it's a lot of pottery and Bone.



17919 [32] [3] small jar plat (complete)

17919/ [3] [33] small plat (fish) (Broken)

17919

[3]

[34]

small Bead.

- 14-10-991 179/6 [5]
- 9- fragments rims acynous plet
 - 21- fragments 4 Baday shards.
 - 9- fragments 1 a shallow plet
 - 2 " " a black glazy.

- 29 fragments Bases Baday shards
- 2 " " a tree
- 11 " " handel Baday shards.
- 1 fragment handel amphra.

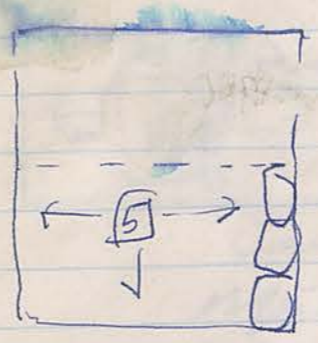
- 13 - fragments shards cooking Bowl.
- 2- fragments a plaster. red cooler.
- 2- fragment Fiegoree.



- 179/9 [3]
- 27 fragments rims acynous plet
 - 13 " " a shallow "
 - 2 " " Baday shards.
 - 13 " Bases " "
 - 1 " " a tree.
 - 2 " " handel Baday shards
 - 2 " " lamp
 - 2 " " handel " "
 - 4 " " shards cooking Bowl
 - 2 " " a black glazy.

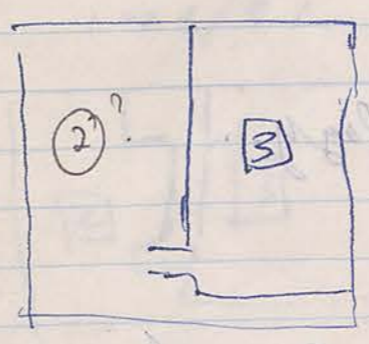
- 14-10-991 179/9 [2]
- 3- fragments rims acynous plet
 - 4 " " Baday shards.
 - 3 " " a shallow plet
 - 7 # " Bases Baday shards.
 - 1 " " a tree
 - 1 " " handel Baday shards.

179/6 [5] Today we continue the work on this case
it's the same things yesterday



179/6 [5] 25 handel with amphra.
179/6 [5] 30 iron sheet.

179/9 [2] today we continue the work on this case
which seem the same the same yesterday.



179/9 [3] 27 had a iron B rowly



179/6 [5] 38 fragment Fiegoree



15-10-991 179/6 [5] 2 Bag.

- 3 fragment ecaynour rims
- 1 fragment " rim Black glayge
- 24 fragments rims Baday shards
- 1 " " a shallow shards.
- 5- " Bases Baday shards
- 2 " handel amphira.
- 2 " Baday shards.

129/9 [3]

- 9 fragment rims ecaynour plat
- 6 fragments rims a shallow plat
- 24 " " Baday shards.
- 10 " Bases " "
- 1 " Base Baday shards.
- 1- " rim ecaynour Black glayge.
- 1- " shards green couler.

179/9 [2]

- 9 fragments rims ecaynour plat
- 1 " " " a black couler. glayge.
- 5 " " " a shallow plat
- 8 " " " Baday shards.

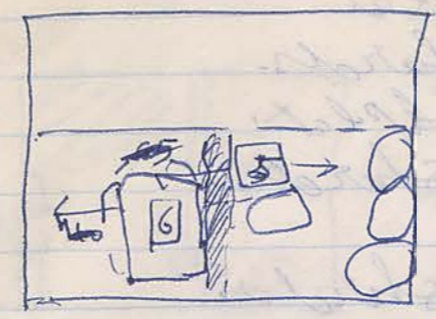
- 11 fragments Bases Baday shards.
- 2 " " a tile
- 3 " " handel amphira. = no. 18.
- 3 " " Baday shards
- 1 fragment shards. Black glayge.

179/6 [5]

- | | |
|---------------------------|---------------------------|
| 8 fragments rims ecaynour | 5 fragments handel shards |
| 11 " " Baday shards | 1- " " amphira |
| 3 " " a shallow | 1 fragment fragment |
| 19 " Bases Baday shards | 1 " lamp |
| 2 " " a tile | 1 " Base green glayge |
| 1 " Base enyatarun | 5 " cooking Bowl. |

16-10-991

179/6 [5]

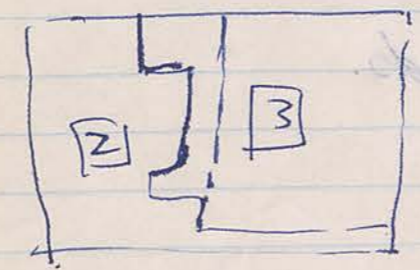


Today we continue the work on this locus which are a lot of pottery and stoneware.

179/6 [6] This locus our d all the spot it's a level floor consist of road and it last. and it lay on the land Bass which lay on the square 179/9 on the west.

179/6 [5] 39 Coin B bronze.

179/9 [2]

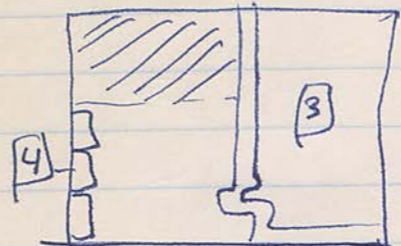


Today we continue the work on this locus which are the soft soil and a lot of pottery.

17-10-991

179/9 [4]

This locus consist of a wall stone it is the same as central wall which comes from the south to north.



179/9 [4]



it rim with Base & cymous

16-10-991 179/6 [5]

- 1- fragment rim & cymous plat.
- 1- " " Baday shards.
- 3- " rims a shallow pld.
- 2- " Bases Baday shards.
- 1- " " Tur.
- 2- " handel Baday shards.

179/9 [2]

- 34 fragments ec rim & cymous plat.
- 10 " " Baday shards.
- 2 " " a shallow pld.
- 7 " Bases Baday shards.
- 1 fragment handel a mshra.
- 6 " " Baday shards.

See additional notes in P.C's writing for 12, 14, 15, 17.

Trenches 179/6 and 179/9.

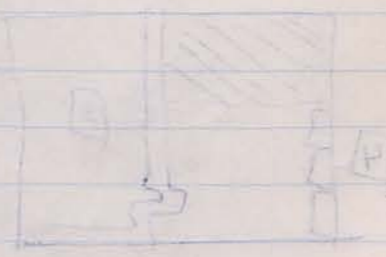
100 - 01 - 41

17-10-99 179/9 [4]

5 fragments Bases Bradley starts.

2 4 ruins ecaunas plat.

1 4 engularum.



p/PTI
 p/PTI
 p/PTI

Jebel Khalid

1991

DQ

179/9

179/6

R. Uka

12/10/91 - 16/10/91

179/9

1991

206/3 A Pottery 10, 12, 13

12 October 1991

Radi's trenches

9 workers as usual.

Work continues on site 179/9 + 179/6

At 179/9 there is a light brown soil mixed with limestone chips, at a depth of c. 80 cm from the surface soil at the N. At the E face a little trouble shows just below the surface at the W (which is the wall of the 2 m spit there is no trouble or is line of the S half of this sector where the rock-cut basin has been discovered.

Immediately above the basin floor is a definite grey stratum of a few centimetres (9 cm at the N of the 1st spit; 6 cm in the middle); this is followed by a reddish stratum of about 9 cm on which is a thin line of hard, powdered limestone, barely 1 cm in depth. This white line can be seen also on the W wall of the spit, here right across the exposed width of the rock-cut basin

12 Oct. 91
 179/9 NE (2)

above the white line the reddish strata
 continues for a little, though in the
 SE corner of the trench, within the basin
 is a markedly dark soil patch
 extending only 25 cm to the N
 The reddish soil has only tiny particles
 of stone in it. The red extends 6 cm
 above the white line.

This is followed by a deep stratum
 of light brown soil mixed with fist-
 sized chunks of limestone (At the N
 sector of this spit we are just approaching
 that is the top of that stratum).

The fist-size chunk stratum varies from
 30 cm at the S to 48 cm or so near
 the N of spit 1°

Today's pit (from spit 2°) I have called
 NE (2) (spit 1° = SE)

12 Oct. 91

179/9 NE (2)

above the white line the reddish strata
 continues for a little, though in the
 SE corner of the trench, within the basin
 is a markedly dark soil patch
 extending only 25 cm to the N
 The reddish soil has only tiny particles
 of stone in it. The red extends 6 cm
 above the white line.

This is followed by a deep stratum
 of light brown soil mixed with fist-
 sized chunks of limestone (At the N
 sector of this spit we are just approaching
 that is the top of that stratum).

The fist-size chunk stratum varies from
 30 cm at the S to 48 cm or so near
 the N of spit 1°

Today's pit (from spit 2°) I have called
 NE (2) (spit 1° = SE)

17 Oct 51
179/6
The trench has a floor level except for the NW corner which is still at top-soil level. This is being cleared today.

12.10.91
179/6.
The trench has a floor level except for the NW corner which is still at top-soil level. This is being cleared today.

17-08-51
 17-01-51
 17-01-51
 17-01-51
 The thickness of the top layer is about 10 cm. It is a hard brown clay with small pebbles. The bottom layer is a soft brown clay with small pebbles. The top layer is a hard brown clay with small pebbles. The bottom layer is a soft brown clay with small pebbles.

179/9 4

Strata 1 a thin layer of top with roots
 Strata 2 fine light brown soil with
 little inclusions c 57 cm deep

At the W face of spit 1^o the strata with limestone chunks rests on above the cut rock.

9.30 am at the very N end of spit 2^o
 there is a hard deposit of red clay
 only about 20-25 cm from the N
 bank. We leave this for the time
 being and proceed with the fine soil
 of ②.

Since the larger chips are emerging at this level, I decide to change the pitting W₁ and call this NE ③

It shows that the concentration of stones is
 greater at the E than at the W. ^{is med-} basin
 small bag of house for ^{is} come from
 NE ② final stage.

15 Oct 91
 P/251

... floor in Radis trench appeared one or two centimeters below the level reached yesterday. It is a hard packed floor and is clearly associated with the bottom of the wall on the SE boundary of 179/6. This level seems the equivalent of the top of the chunky limestone deposit in 179/9 which is ~ 52 cm down from the surface. The surface in 179/6 is also ~ 55 cm from the surface. This is a second occupation after the original occupation of the cistern/or rock-cut basin.

This floor has now been cut through in the S sector of the trench in order to investigate the E extent of the basin in 179/8 & 6

13.10.91
 179/6

the floor in Radis trench appeared one or two centimeters below the level reached yesterday. It is a hard packed floor and is clearly associated with the bottom of the wall on the SE boundary of 179/6. This level seems the equivalent of the top of the chunky limestone deposit in 179/9 which is ~ 52 cm down from the surface. The surface in 179/6 is also ~ 55 cm from the surface. This is a second occupation after the original occupation of the cistern/or rock-cut basin.

This floor has now been cut through in the S sector of the trench in order to investigate the E extent of the basin in 179/8 & 6

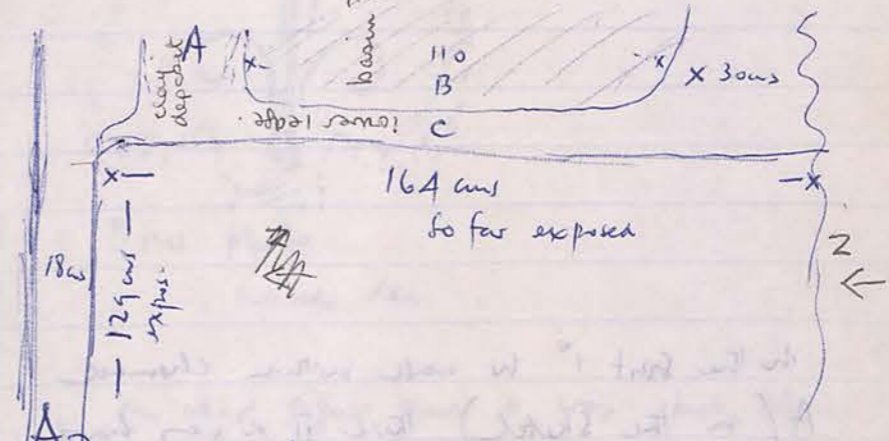
17.10.91
 17.10.91
 17.10.91

The basin in front of the house is a simple one, but the basin behind the house is a bit different. It is a basin with a channel at the S end and a larger one at N. The basin is 110m wide and 21m deep at S and 30m deep at N. The ridge C varies in width from 5m at S to 12m at N.

12.10.91 179/9

3

At the S the rock-cut basin is 30m deep. The cut here is simple at the W, there is a kind of step with a channel at both S and (a larger one) at N.

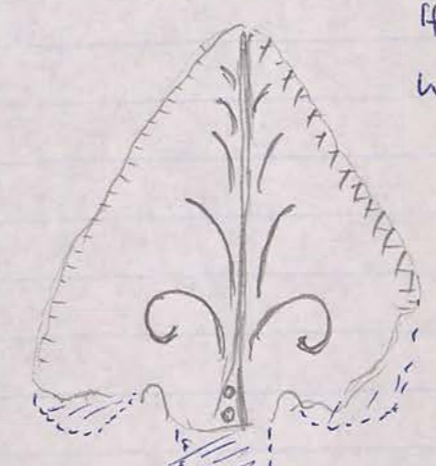


A is 20m at bottom; 34m at top; The sides of the cut are not vertical (the cutting of all the basins is fairly rough)

B is c. 110m wide; 21m deep at S 30m deep at N

The ridge C varies in width from 5m at S to 12m at N

91-574
 11-21-54
 In the spit 1° W wall within channel
 A (in the sketch), there is a very hard
 clay material
 The white powdered limestone stratum lies
 above this hard clay element.

91-574
 H. 4.4 cm
 W. 3.7


 Btw photo.
 raised dec
 on rear signs that it was stuck when
 wet to another to object
 painted fast.
 dark gray plant forms
 H 5.2 cms
 W 5.5 cms

14 October 1991

179/9

10.45 am.

Φ from surface and within trench of echinus bowl + flaring bowl (fine plate) "in situ" in the NW corner of the spit (2°). There was also base of basalt grindstone associated with them. They lie just above the cut bedrock and are in the ash-free layer beneath the red.

At the N end of this section a portion had not been excavated kept below a hard clayey red surface, in order to keep deposits apart. Today this portion is being cut back to the N wall of the trench.

Actually in the N half of the trench (to judge from the stratigraphy) there is hardly any sign of the thick fill of limestone chips found in the S part. The red deposit, seen at the front only a little (see previous notes) rises in the N to become quite deep.

10.55 am.

As I write, the workman is searching the area and finding what turns out to be a large shed rather than a pit, strikes deeper into the wall of this spit and hits the vertically cut wall of the bedrock. This wall is then cleared S to the prominent 'step' of rock sketched previously.

The bedrock dips towards the 'step'

15 October 1991

179/9.

The ash grey stratum is immediately above bedrock then a red stratum with a hard floor of mixed white and black. The red stratum (if it is hard) the grey ash is soft.

The ash is 11 cms deep

the red is 8 cms deep

The N bank shows a depth of red of 65 cms. Its top surface is equal to the height of the cut bedrock at the N.

16.10.91

206/3A [12] red.

small wt coarse ware body sherds

1 rim frag mortarium

6 profile rim frags

body frags vs.

2 rim frags echinus bowls

16.10.91

206/3A [10]

very small wt coarse ware body sherds

1 profile rim frag

1 worn base frag.

1 rim frag flaring-rim bowl

One bag

16.10.91

206/3A [13]

small-medium wt of coarse ware pottery

1 rim frag mortarium

2 rim frags flaring rim bowls

3 base frags

1 handle frag

3 profile rim frags

1 echinus rim frag

body frags fire rg etc.

1 straight rim frag

body frag cooking ware

16.10.91

206/3A

wall cleaning

small wt c/w body sherds

2 rim frags flaring rim bowls

body frags rg

One bag

1 rim or base frag.

17 October 1991

179/9.

Factory ??

In the N bank.

a little tumbled, then a light brown shales with chips to the top of the cut rock at the W, where a red stratum begins

there is a thin light-gray level with the edge of the basin then more red, then a very dark gray on the basin floor.

On the E bank the red slopes down from N to S in the way the high bed rock descends at the west. In other words, the whole 'vat' (?) became full of the red soil.

This seems to mean that on the E there is a rock cut high tide like bank on the W

The basin continues to the N where the area of the surface soil is largely free of tumbled.

Towards the W of the trench there is a large ashlar block that may faller almost on to the bedrock

6.55 am. a rubble wall is appearing in the W wall of the trench. This gives the W boundary of the rock cut feature

As with the trench to the S the wall appears at the very edge of the trench.

So we have a wall (partial) in the E bank of 179/6 and a wall in the W

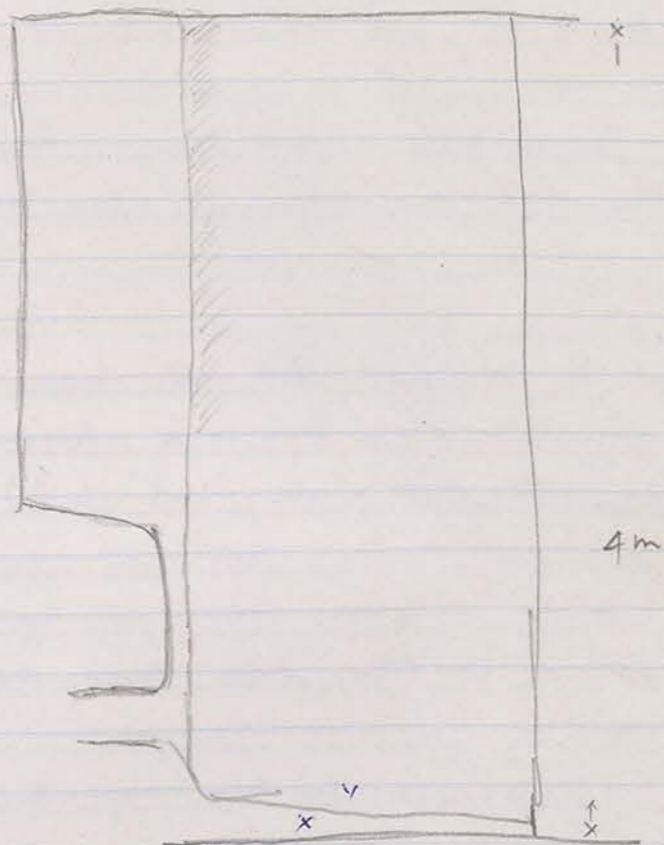
W wall

* This is the Grand Central Dividing Wall

16 October 1991

179/9

The basin has been cleaned to the N bank of the trench. It continues through the bank.



x is 1.10 m down

v is c. 1.30 m down from soil surface

179/6 in W sector bedrock is beginning to appear

179/9?

There is perhaps a circular feature in the rock at this point. Certainly the soil is softer in a line of a ring.