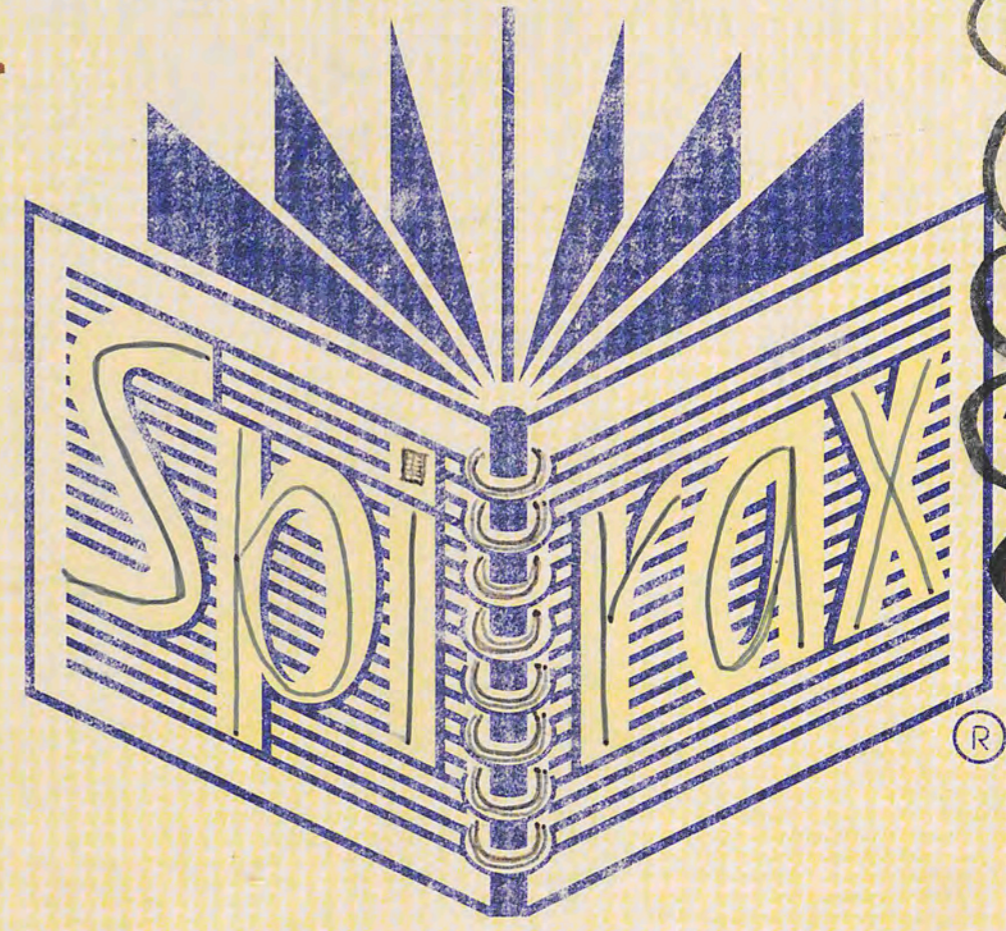


Acropolis Jebel Khalid 1991
فوق نورة جبل خالد

round
8, 9, 10, 11

- T.22
- T.26
- T.30
- T.33
- T.35



A4 NOTE BOOK

No. 595

G. W. Clarke

ionic doorway piece p. 11
 coin: 23 (2 coins) DK Count 41
 missing: P. 9, 13, 14, 19, 23, 41, 43, 44 (4)
 stamped handle p. 55 missing!
 at back: cistern
 roof-tile, 23



9/9/91

Starting with clearing old trenches. Some pottery frags.: a glass frag. from the 'long room' behind the colonnade on the N. side becomes bag ①. Also in the 'long room' has turned up an architectural frag. of a door architrave



Pottery that has fallen in from the baulk will be bag ②. A rail from the Big Room with the centre-column becomes bag ③ and pottery from the small NE corner room (only partly opened) will be bag ④. Bag ⑧ is a further clearance pottery bag from the area of the drum-altar. Bag ⑤ is pottery from the Big Room (Central Column)

Bag ④ 9/9/91 Some coarse ware pottery frags (smallish bag) plus

- 1 bowl base, burnt interior, pinkish exterior, coarse, small rim
- 1 echinus bowl rim, largish, weak black strip exterior, pinky black interior
- 1 large echinus body frag. near rim, weak red stripy paint exterior, burnt interior
- 1 rim frag. coarse ware open mouthed jar, gritty pink fabric } shape
- 1 small round amphora toe

Bag ⑧ 9/9/91 A very few coarse ware frags. plus

- 3 chocolate brown glazed frags.
- 1 more weakly glazed round bowl body frag., fine pinkish fabric
- 1 weak black body frag. - from plate?
- 1 body frag. with weak black drippy stripe


Bag ⑤ 9/9/91 T22 Surface Pottery

- A few coarse ware frags only
- 1 weak black paint body frag., thickish fabric
- 1 rim frag. weak red round plate (?)
- 1 base frag. + rim of very small pot, unfotted base, weak brown paint
- 1 body frag. of weak black painted fabric - both sides
- 1 rim frag. small echinus bowl, weak red paint

Bag ② 9/9/91 Clearance. Bag of coarse ware body sherds - not large - including one coarse ware pink interior, double incised lines on exterior

Bag ⑤ 9/9/91. Small collection of coarse ware frags. plus

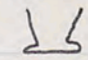
- 1 amphora handle, round
- 1 base frag., footed, burnt exterior, weak brown interior
- 1 body frag., red inside, red patch outside
- 1 rim frag. of open mouthed vessel
- 1 large rim frag. of incurved bowl - blackish exterior

AK T22 9/9/91 [1] ⑦  piggyfooted basalt vessel, grinding bowl

AK T22 10/9/91 [2] ③ - bag of coarse ware body sherds only, small.

one weak red paint rim frag.

AK T22 11/9/91 [2] ⑤ Collection of coarse ware frags.

1 weathered amphora toe 

1 'chocolate-ware' plate frag.

3 footed base frags, 2 with weak red interior

2 rim frags, coarse ware, closed mouth vessel

1 rim frag - " " 

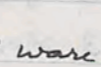
1 round button base, weak red paint

AK JK 12/9/91 [2] ⑥ Bag 1.

Some coarse ware frags. (not too many)

2 weakish black glaze rim frags. + footed round base frags: one with palmettes + rouletting + one body frag.

2 fitting frags of echinus bowl (large) weak brown on exterior near rim, weak black interior


1 rim frag. coarse ware  double incised lip, pinkish ware

1 " " " " , whiteish frag, open mouth

AK T22 12/9/91 [3] ⑤

Some coarse ware frags:

1 piece brittle black cooking ware

1 rim frag. of blackened rim storage-type jar . large


1 v. coarse, complete base, ring, tiny foot, pinkish fabric

AK T22 15/9/91 [4] ④


Some coarse ware frags.

1 brittle red body frag

2 base frags, coarse ware, round/ring bases

1 rim frag, outturned, coarse, blackened ware 

AK T22 15/9/91 [5] ⑥ Some body frags coarse ware

1 rim sherd, weak brown paint  old mend hole

1 plate frag, largest, palace red ware

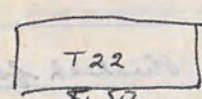
2 very fine red glaze small cup frag

1 black brittle ware, tiny, handle frag.

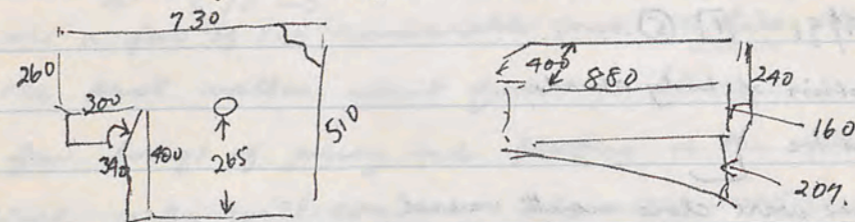
nail [2] ①

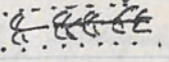

T. 22

9/9/91

On North side  a trench was opened to complete 5m [lengthened in the end to 6m] 5.50m.

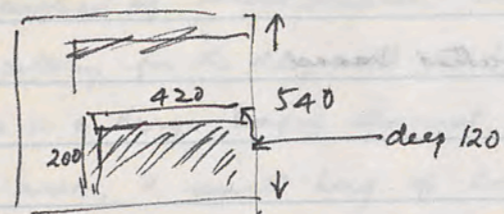
The north store-room. Work will be to-day simply clearing the surface of small stones. The trench should have the full room + determine the exterior of the house on the N. side. There will be a good deal of fill. We are now clearing the surface rubbish + dust. And have removed two stones:



both were sitting on the surface of light dusty soil with a few roots of grass etc. The work is slow + won't be v. interesting. The surface pottery will be bag ⑤. Bag ⑥ is a fine piece of moulded + stamped bowl rim along with incised dots . Bag ⑦ is a pig-footed bowl in basalt (frag.) . The locus for to-day is [1]

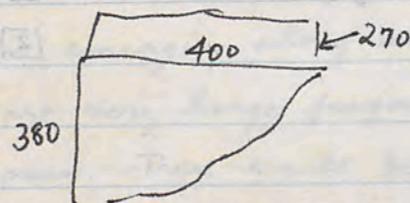
10/9/91

Crazy number of workmen. But it'll settle down later.



block is 350 deep + it's 600 x 540

Removed sitting on surface soil (light + dusty). There is a doggy sort of wall which is likely as enough merely tumble along the NS line to the east of the trench. I'll call to-day's locus below the surface level locus [2]. A Nail from the NE side becomes [2] ①



The wall is emerging in the E + W baulks. In the NE corner there may be a doorway: uncertain yet. We've decided that we have merely tumble in the NS line + are starting to remove it, stone by stone.

AK T22 14/9/91 [3] (6)

A very few body sherd

- 1 ring base frag. (large) red glaze, thickish fabric
- 2 frags. of double round handles, 1 with other half snapped off.
- 1 coarse ware base frag. ring foot
- 1 open rim frag. \updownarrow , brittle greenish ware.

AK T26 16/9/91 [1] (5)

A smallish collection of body sherds

- 1 simple amphora bc
- 1 rim frag. coarse ware close mouth vessel.
- 1 coarse ware body frag. with mending hole.
- 1 plate frag. red one side, pinkish the other.
- 1 rim frag. intwined bowl, small
- 1 frag Green glaze

AK T26 17/9/91 [1] (6)

Small collection of Coarse ware frags.

- 1 fine red glaze body frag.
- 1 body frag. + handle base
- 1 rim frag + neck of small-mouthed vessel
- 3 base frags., 2 footed, smallest
- 1 shallow bowl rim frag.

AK T26 19/9/91 [2] (6) Bag 2.

Part of large collection of pots

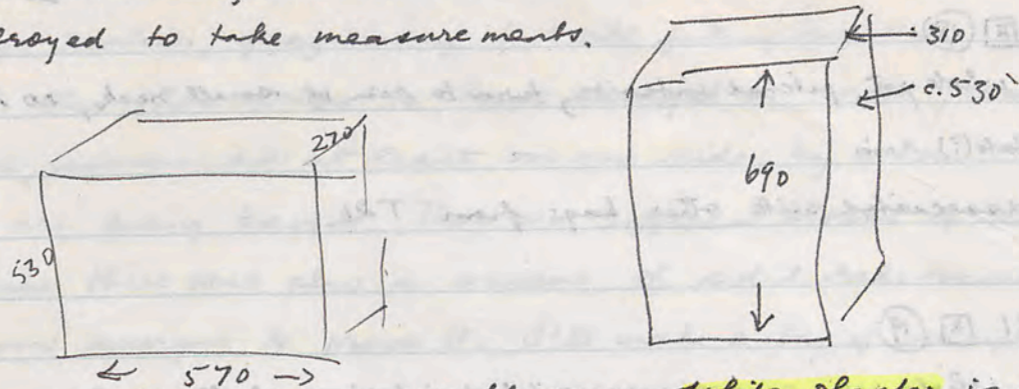
- 3 lug handles of cooking ware, brownish + black, reconstructable [2] (3) loom weight
- 1 large footed base frag. with associated body sherds [2] (4) nail
- 1 base frag. large storage pot. [2] (5) glass

AK T26 19/9/91 [2] (5)

Some large coarse frags:

- 1 body frag black exterior, brown painted strip interior
- 1 echinus bowl frag., rim, black strip on rim
- 1 very coarse ware brown closed-mouth rim frag

The tumble sits clearly on earth: the stones are partly dressed by too far destroyed to take measurements.



These are a few of the measurable ones. White plaster is emerging from the east wall in great quantity. It seems to be only white so far with a few frags of pinky red flaking in the debris level. 570 x 270 x 590 block, pretty well complete, also removed from centre of the trench. On the west wall is also emerging white plaster. 580 x 40 x 290 large dressed stone on earth in centre of trench. 320 x 270 x 370 dressed block, but incomplete, removed. There is a lot of plaster being removed from the east wall, largely white, some black + at least one piece where white + black join with an incised line. A few frags. of red plaster coming up with largely the white on the west wall. We are nearly reaching the floor on the East wall, from which large slabs of white plaster are emerging just fallen off the wall. There is already a large lambeel of white plaster. The floor is small hard + pebbly.

The pottery for the day will be [2] (8)

There is a large bag of charcoal, most of which is emerging on the east wall area, a small bag of bone. Dressed stone but very fragmentary keeps on emerging.

11/9/91

We keep on clearing to floor level. A loom weight from the East wall (where others emerged last year) is [2] (3). Plaster, a little red, is emerging along with basically white plaster. [2] (4) is a nail frag. There are very large fragments of the storage vessel emerging including rim pieces. There would be more pieces stored in last year's pottery. [2] (5) is a piece of black glass emerging from east end also. We are proceeding more satisfactorily but without Haja Mauna as the result. Large frags. of the storage vessel (smashed over the winter) are emerging

[2] ⑥ storage vessel

T26 21/9/91 [2] ⑫

- virtually whole pot, pitched interior, turn to rim of small neck, no skin however
- 1 fish-plate(?) rim

NB: may be associated with other bags from T26.

T26 21/9/91 [2] ⑬

Virtually whole pot, coarse ware, pitched interior, full mouth surviving (small)

T26 21/9/91 [2] ⑮

Large collection of pinkish coarse ware associated with large body sherds of virtually whole pot, 2 whole handles with large body sherds triple incised pair of lines around body, also two bases of handles adhering to large coarse ware body sherds, one abraded closed mouth of large vessel

- Echinus rim weak black paint
- 1 coarse ware rim, closed mouth, outturned 9

AK T22 16/9/91 [5] ⑧ tiny collection

- 1 rounded base frag, smallest
- 1 rim frag., fine red glaze. fine
- 1 rim frag. small Echinus but fine open bowl. }
- 1 base coarse ware handle
- 1 rim frag. weak black paint
- 1 base frag. footed coarse ware

[2] ⑦ mammary toe + pounder

[2] ⑧ pottery

AK T22 18/9/91 [1] ⑦ large bag of coarse ware sherds, some cooking

- 1 complete open mouth large coarse ware vessel.
- 2 amphora toes, beige
- 4 Echinus bowl rim sherds, 2 weak red paint, 2 weak black, interior & exterior
- 1 coarse ware, outturned open dish blackened exterior
- 3 coarse ware rim sherds
- 1 " " body sherd, thick, gouged part: lines on exterior

from the floor: I will have to take them all down by zambelas [2] ⑥

A large section, fragmentary, but all fitting together will be [2] ⑥ Bag. 1. Also there seems to have emerged an inset plaster 'window' in blue, surrounded at least on one side by ochre. Some sample pieces are being bagged. There are sufficient blocks of red plaster to assume there was also a window of solid red: raised panel edges have now emerged to prove it. I'll make a bag of sample plaster from the trench: but there is far too much to remove from the site.

We are not near the wall of this room (N) end. There is also duck-egg blue emerging (as last year) near the W wall, but what is still on the wall is white. There is a large hole where the storage vessel was smashed up. I've photographed the plaster still on the wall but it is already crazed & won't stay there long. On the whole with the exception of the plaster the room is pretty vacant. The pottery will be taken all together in one or two bags: there is little to distinguish the areas of the trench. There are an unusual number of tile fragments throughout the trench, some of large size. A nice pounder with thumbhold has come up along with a mammary toe, confirming the storage & food preparation function presumed for the room — perhaps. Pounder & toe become [2] ⑦. There are very large chunks of red plaster coming up in the vicinity of the west wall — photo taken. The day's pottery will be [2] ⑧ & the bone & charcoal are not plentiful to-day.

AK T26 19/9/91 [2] [3]

Basically whole pot, coarse ware, rounded base prob.

1 separable, rim frag with complete handle, blackened exterior
gritty coarse ware.

[3] [1] bronze ? pin

AK T30 26/9/91 [2] [2]

Large collection of coarse ware, largish sherds

3 coarse ware rim sherds, thick, not fine.

AK T26 21/9/91 [2] [11]

Complete open mouth frag. + associated body sherds of coarse ware
body frags.

AK T22 14/9/91 [3] [5]

Some rim + body frags taken with storage vessel but which don't belong

Two frags of large open-mouthed rim.

1 rim frag, orange glaze, thickish open dish.

AK T30 28/9/91 [3] [2]

V coarse ware frags. including 3 outturned rim frags. of large vessel
+ 2 other coarse ware rims.

AK T30 24/9/91 [1] [4] v. small collection body sherds only, including 1 drip
ware.

AK T26 24/9/91 [4] [4] v. small bag body sherds including 1 handle base

AK T26 21/9/91 [2] [20] large collection of body sherds associated with

1 rounded amphora base, coarse ware

1 large base + body frag, coarse ware

1 mend-hole body sherd

1 gritty brown shoulder frag.

1 ungentaruin toe

3 Coarse ware rims

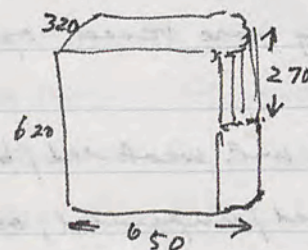
AK T22 12/9/91

I'll call to-day locus [3] as we clear across the floor: we are likely to complete the trench to-day. [3] [1] is a small piece of bronze pin on the floor near the west wall. The plaster is particularly thick + solid red near the west wall: there's little doubt that whilst some white still clings to the wall, the basic colouring was solid pink/red esp. in the N. end where we are currently completing the trench. I'll take a zambel of samples: otherwise I'll simply photograph the pile of white + pink plaster: there is very little bluey-green, which I'll bag with the sample.

We've decided to lengthen the E + W length of the trench to 6m.

making the whole trench 5.5 x 6m. in order to complete the room.

* A coin from the floor in the NW corner is [3] [2]. A smashed large section of pot, possibly belonging to the same storage jar, as it is all together, will be in zambel [3] [3]. Some wood samples will be [3] [4]



I'll call the surface area of the extension of the trench locus [4]. And already the exterior wall of the room is emerging; under difficult circumstances of high wind. We can proceed only slowly. The pottery from the floor will be [3] [5]. The wall appears to be exterior on the N. side - no stippling for plaster. I'll make the plaster sample zambel [3] [6]

* missing from list

22.3.2 12.9.91 = 91.079 [missing]

JK T26 22/9/91 [3] (25)

- One large bag of body sherds
- 1 complete amphora spout & neck
- 1 amphora toe, coarse ware
- 4 outturned coarse ware rim sherds, two joining (amphora stand?)
- 3 body sherds, red glaze, 1 red glaze echinus rim, one ring footed base frag. (red glaze also)
- 3 coarse ware echinus rims, small bowls
- 1 small ring footed coarse ware base frag.

AK T30 25/9/91 [1] (5)

tiny group body sherds, 1 coarse ware strap handle.

AK JK T26 19/9/91 [2] (5)

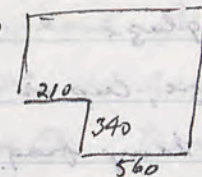
- Large bag body sherds including many cooking ware body frags.
- 4 rim frags (joining?) of large cooking ware vessel, open mouthed.
- 4 coarse ware ring footed base frags
- 4 outturned simple rims, 2 echinus, all with weak red/black around rim
- 1 frag. of round handle, 1 rim unglazed/unpainted, outturned.
- 2 largish frags of ring footed red glaze bases, one of plate
- 1 solid ungentarium base frag.
- 1 frag. (body) weak red glaze

AK JK T26 21/9/91 [3] (17)

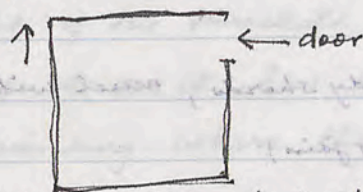
- Large collection of body sherds, some large reconstructible pieces associated with 3 joining rim frags. of open-mouthed pitched vessel
- 1 round handle frag.
- 1 amphora toe
- 1 body sherd with mending hole
- 2 rim frags. of outturned dish, plain ware

AK T22 14/9/91

Inundated with offers of work but determined not to take on more. We should basically clear this trench to-day + set up a new one. I'll call the area we're clearing to-day locus [4] which is on the N end of the trench, the extension designed to include the N wall of the trench. It will be some time before we get to plaster + pottery levels. 730 x 630 x 230 removed from surface level pretty well complete.



* A coin found in the surface debris, well preserved, becomes [4] (1), [4] (2) a set of nail frags. It is appearing that the room will be shaped thus:



It was roof-tiled, to judge from by wall plaster + the quantity of roof-tiles recovered. We are making a new trench to the east to complete the adjoining room: it will be an odd shape [6] in order to comprise what we conjecture the room to cover. In NE corner where a splendid door lintel has emerged (egg + dart as well as flutes) has come a beautiful bone spatula as well as a stone spindle whorl, and a complete small grinder. Spindle whorl is [4] (3), spatula [4] (4). grinder will be [4] (5). 560 x 270 x 570 (broken) removed from fill. The door lintel will be drawn by B. Rowney [6] (egg + dart flute).

White plaster is coming up in the vicinity of the N wall: so far white only. Frag. of black glass is [4] (6). A river stone pounder has also come up near the floor on the W. end. The stone floor lintel had a scroll at either side (broken one side). A second jamb of the large storage vessel will be [3] (5). Pottery for the day [3] (6). Also bone, charcoal + wood samples.

* missing: not in recorded list 22.4.1 14.9.91 = 91.070 [missing]

AK T30 1/10/91 [5] (6) Bag 1

Large collection of coarse ware pottery, much with pitched interior

- 1 amphora handle frag, solid
- 1 body sherd, with base of triple strand handle.
- 1 base of small ? aryballos
- 2 body sherds of fine red glaze
- 1 rim frag. weak red glaze, cup or bowl, outturned rim
- 1 ? mend frag. or possibly lamp frag.
- 3 rim frags., 1 weak black (exterior & interior), 1 weak red (? plate)

AK T30 1/10/91 [5] (6) Bag 2

Large collection of coarse ware body sherds, much with pitched interiors

- 4 plain ware footed bases (some may join)
- 5 " " rim frags (outturned rim)
- 1 rim frag., outturned, weak red interior
- 1 weak red glaze rim frag., cup or bowl.

AK T33 5/10/91 [1] (4)

V. small bag of coarse ware frags

- 2 rim frags (joining), plain ware
- 1 echeinus bowl rim frag., weak red on lip + interior

AK T30 2/10/91 [5] (8)

Large bag of coarse ware, much pitched

- 1 plain amphora toe
- 1 marbarium, plain ware, rim frag., weak plain line on exterior lip
- 1 base frag, ring footed, reddish fabric, small base

AK T22 15/9/91

Final clearing of the floor as well as the frags of a very large storage vessel in the doorway of the W. wall with its fine threshold - in the bank. A black rim frag of glass becomes [4] (1). I've called the floor dumping locus [4]. On the floor has come up a marble paving slab? mottled brown + white, labelled carefully on back β and A $190 \times 110 \times 10 = [4] (2)$. The smashed up pots lying by the W door become two large zambal labelled [4] (3) bag (1) + (2). There are at least two vessels, including one wide-mouthed bowl. There is more wood from near these smashed pots, bone + a final bag of pottery [4] (4). We conjecture, given the height of the threshold that the flooring paving has been robbed away, just as it has been in the big room undoubtedly. I shall do a sounding where the floor was broken through to investigate the packing of the floor - it wouldn't be a storage pit on the direct line between the two doors. Note: the volute fluted door-element (? 12 flutes) was near the E door, the other stone with flutes + shaped was in the debris level close to the W door. They may both belong to the stone just outside the trench: we should store all 3 pieces together. We are digging through the floor to make a sounding to the foundation. Bone, rubble + a little pottery from a pit about a metre square. The sounding will be locus [5]. There is bone, pottery, a little carbon but basically just rubble packed hard. *A coin in this fill becomes [5] (5), pottery [5] (6), + nails [5] (7).

Further sounding has continued 16/9/91 - at the lower levels there is nothing but a little bone, the rest being rubble + fill without any artefactual material. [5] (8) is pottery, some bone + charcoal. large nail is [5] (9).

17/9/91 Two more zambal of the were taken down to-day.

We continue the metre sq. cut into the floor to reveal the room's foundations as the Tegel slopes away. Having gone down already two metres of packing (virtually without charcoal, pottery or bone) we may not feel it worth proceeding further.

22.5.5 15.9.91

ww .91.057

* also missing, unrecorded: wd be important find! i.e. date to construction period, providing terminus ante quem....

AK JK T30 29/9/91 [2] ⑧ Bag. 1

- Large collection of coarse ware body sherds
- 10 coarse ware rim sherds (main joining), open mouthed vessel.
- 1 large body sherd with complete handle attached, plain ware
- 3 neck frags., plain ware
- 3 coarse ware ring base frags.
- 1 weak plack, rim to foot-plate ring, frag. : good profile
- 1 echinus rim frag, weak red to black
- 1 red glaze, simple rim frag., open bowl
- 1 " " body frag.
- 1 " " base + body frag. + part of rim, thick buff fabric, plate

AK JK T30 29/9/91 [3] ⑧ Bag 2

- Large collection of coarse ware body sherds
- 4 coarse ware footed base frags.
- 1 amphora toe, plain ware
- 1 narrow necked rim frag., plain ware
- 3 coarse ware rim frags, 1 with pie-crust creckle on exterior
- 1 red glaze base frag., round footed, with 2 lines of rouletting in interior.

AK TK T30 30/9/91 [5] ④

- V. large collection, coarse ware body sherds, some pitched, some large storage vessels
- 1 complete base frag, ring footed, plain ware, smallest
- 1 double handle frag., round strands
- 2 coarse ware rim frags.
- 2 " " base frags, ring footed.
- 1 base frag., rounded base, red glaze
- 1 weak black glaze lamp frag., ~~knapp~~ as object or arykallus neck + mouth?

T22: Conclusion:

The rooms seems to have been basically of a storage function, to judge at least from the very large vessel(s) in the floor + on the floor as well as loom weight collection. The decoration was basically all in solid colours of ^{black,} pink + white + duck-egg blue with some little ochre. At least one raised panel of blue + some evidence of replastering (pink beneath). But if it was for storage then the elaborate doorway treatments (egg + dart plus Ionic volute, plus fluted [partly] portal decoration) do no fit with this lowly function. One has to assume * that they faced into more important rooms socially. The floor has clearly been robbed away: there is no way of telling whether the marble tile belonged to this room or to another: it was among the debris lying on the floor such as it was left. So one has to say a magazine room for the moment providing a through passage by the doors in the E + W at the N end of the room. It seems to me that the tile may have been artificially mottled.

* or came from upstairs?

AK T30 30/9/91 [4] ③

Large bag coarse ware body sherds including storage vessel + some large pieces.

4 v. coarse ware ring base frags.

1 base, unfooted, small aryballos, coarse ware

2 coarse ware open rims

1 black glaze rim frag, fine ware, outturned bowl

1 single strap handle with body frag.

1 double handle frag., coarse ware.

1 twisted rope handle frag., smallish

1 ungentarium neck frag, brittle black ware

2 red glaze body frags; bowl

1 ring base, red glaze, large plate

AK JK T26 23/9/91 [4] ③

Large collection of body sherds, plain ware, much pitched

1 twisted rope handle frag. weak red/black paint.

2 coarse (cooking) rims, small open mouth, frags

2 " ware rims, outturned

2 weak black glaze body frags, both near neck

1 base frag., coarse ware vessel.

1 rim frag. weak black paint, grooved on interior, wide (? fish) plate

1 rounded base frag, red glaze exterior, black glaze interior, fine fabric

1 weak red painted inverted rim

Bring some Paradol
Alkanri for workers

AK JK T33 2/10/91 [1] ①

v. small collection of coarse ware sherds

1 ring base (small), complete, in 2 parts

1 base (coarse ware) of amphora

1 base + beginning of handle

2 rim frags, coarse ware.

15/9/91

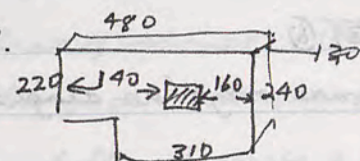
T26 has been started removing the surface fill. It is essentially a 6m. square trench with a section cut out from the previous trench. If it is the same the floor will be paved over packed rubble. In the surface few cm. has come up near the W wall some tile, * a coin [26] ①, a spindle wheel (stone, small) [26] ② + a Hergarise ring level (new?) [26] ③. [26] ④ is a piece of metal twisted into a large loose ring, also from surface level.



* missing 91.063

16/9/91

Will continue all day clearing the surface fill, some of which has been dumped as fill for the wheelbarrow track, but we won't use the shovels as there is so much dust. I would expect very little to be revealed to-day. Also continuing on the sounding of the floor of T22 but it is now almost solid limestone chipping packing + nothing more. There was no appreciable difference in the soil consistency close to the present floor of T22 even though one presumes that it had some left fill over the present level on which the pavers sat. A stone block with a large socket has come up early in the fill.



17/9/91

Peter sick, so dealing with his MSN as well. We have a long way to go down and should start getting large blocks soon as elsewhere setting on a lot of original fill of wind blown dust.

We continue to go down in T22 clearing to bedrock: so far a good metre down. Some mortar is emerging, otherwise I'm trying to heap to the top light whitish dusty topsoil - which goes down about 5cm. - before we get to a different stratum of browner + more solid soil. We'll measure the large architectural stones, which appear to be wall blocks, + then put them outside the trench. The(?) outside east wall is emerging nicely: the trench will have caught it + we'll also be able to see what lay outside. Otherwise just shifting lots of dirt.

AK JK T30 5/10/91 [5] (9)

V. small collection

1 large plain ware amphora toe


1 " " " base frag.

1 " " " rim frag.

AK JK T33 7/10/91 [2] (3)

Large collection coarse ware body sherds

3 coarse ware rim frags, " " "

1 unusual coarse ware rim frag.  light black interior groove.

1 red glaze rim frag., open bowl

1 coarse ware footed base frag.

AK JK T33 7/10/91 [3] (3)

Collection of coarse ware body frags:

1 shap handle frag, 4 part: grooves

1 rim frag. with handle base attached to rim, incised wavy lines on body

2 outturned coarse ware rim frags.

AK JK T33 8/10/91 [3] (6)

Collection of coarse ware only: no diagnostics

AK JK T33 8/10/91 [2] (6)

Large Collection of coarse ware pottery.

4 ring bases, plain ware, one complete, one 2 pieces joining


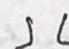
1 echinus rim frag., black exterior, red interior

AK JK T33 9/10/91 [2] (10)

Collection of coarse ware body frags. 1 echinus rim, weak red interior

2 large frags - connecting - of coarse ware large storage jar rims

2 coarse ware outturned rim frags. 1 gouged ware or ribbed body frag. pinkish

2 amphora toes, one with ring , one 

1 coarse ware base frag, ring footed 1 complete base ring of weak red glaze,

1 weak red glaze rim frag (abraded) fine buff fabric

1 red glaze (chocolate) plate frag. 1 black glaze base frag., line scraped around base of vessel

[1] (5)
17/9/91 A small pounder has come up in the surface fill, and a very little pottery but otherwise a great deal of dusty soil. A further foot of a basalt pounding vessel has emerged in the fill. There is too much fill for these to be of any significance for the function of the room. There will be but one bag of pottery being [1] (6)

18/9/91 560 x 320 x 420 (damaged) removed from surface soil.
600 x 320 x 560 (battered) " " " " " "
Characteristic tumble of building blocks fallen onto wind blown dusty soil.
350 x 370 x 520 (pretty well beyond recovery but neatly dressed) 430 x 200 x 300 " " " " " "

The stones are all sitting on crunched limestone.
700 x 1200 x 320 (damaged) also removed: large block sitting on what remains of the E wall.

We have got through basically the whitish crushed limestone level and have beneath a stratum of distinctly different brown soil, which is the fill from wind-blown dust before the building collapsed. There are blocks of dressed masonry in the limestone soil but beneath the soil is clear of stones. There is very little pottery throughout. And despite the fact that the wall appeared picked for plaster, little plaster is in the fill. There is a fair bit of filling 'mortar'. What plaster has so far come up is the duck-egg blue shade (West wall + East Wall vicinity) Some white plaster has come up adjacent to the South Wall.


Pottery for the day [1] (7), some bone + a little charcoal.

AK T22 15/9/91

Marble tile is basically mottled blue, brown + buff + green
Back side (with β and A) has much blue + green as well as
brown + buff; corners tapered.

JK AK T33 10/10/91 [3] (11)

Smallest collection of body sherds, coarse ware

1 amphora toe, ringed 


1 fish plate base frag, plain ware

1 plain ware outturned rim frag., smallish vessel.

JK AK T33 12/10/91 [4] (1)

Small bag body sherds

2 coarse ware rim frags, small vessels

1 handle frag., 2 round plus 'rope' in between , slight curve

AK JK T33 13/10/91

Collection, largest, of coarse ware frags.

1 ungutarium toe + leg., plain ware.

1 double handle, plain ware, + body frag.

4 plain ware, footed base frags.

1 ring footed base frag., weak red glaze, double incised lines in interior

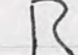
2 red glaze ring footed base frags.

1 greasy-black fabric, ring footed base frag.

8 coarse ware rims, smallish vessels.

1 rim frag., shallow dish or fish plate.

1 coarse ware rim frag. plus handle frag. attached, single strap.

1 grey ware stone rim frag. 

1 small rim frag. weak red glaze

19/9/91.

New locus for the day [2] as we move systematically across the trench a few cm. or so above the floor, cutting through the brown soil with a few small stones, some mortar + doubtless some plaster. I shall try + keep track of the vicinity of the plaster colours. [2] (1) nail, [2] (2) glass frag. from above the floor. A whole pot - or virtually so - with lug handles at rim has come off the floor, bagged separately as [2] (3) - there may be some more frags. in the associated general pottery bag. The floor is flag-stoned, so far. The wind + dust are making life difficult. A coin near the * centre of the trench is [2] (4) [2] (5), (6) + (7) is pottery, including several whole pots. A bone spatula is [2] (8), + pounder [2] (9)

* cd this be 91.155 = Tab. 2.16 Ant. iii of Sol. serrate (2 coins)

21/9/91. We continue across the floor collecting tiles, bone + pottery. The flagstones appear complete. There are quite sizeable chunks of duck-egg blue plaster coming up in the East Wall of the room, along with an architrave or cornice moulding which shows clear traces of blue + which will be bagged as [2] (10). There is a great deal of pottery coming up, including one reconstructable pot which will come down by Zambel as [2] (11) from the middle of the floor; and large frags. of roof-tile which give the complete dimensions of c. 650 x 550 [2] (12); roof tile (by Zambel). [2] (13) nails. Near the N. end on the floor, west side, some green moulded glass [2] (14). There is a smashed up amphora in the NE corner which will come down separately [2] (15) [2] (16) are two coin frags., one readable, from the SE floor under a stone. There are a number of large bags of pottery [2] (17), (18), (19), (20), all should be related + they appear to be coarse ware domestic-use vessels. We are going to clear the east side of the east wall down to some form of flooring: it should like outside the house. A bead from this new area - locus [3] - becomes [2] (21), a bronze(?) pin [3] (22). White plaster only is coming up in the vicinity of the north wall. The pavers are impressively regular. There is an amphora toe-hole in a paver close to the N. wall. The pottery is the most abundant I've ever had. A little black plaster is coming up in the NE corner by the wall. A largish bag of bone as well as charcoal.

AK T35 14/10/91 [2] (2)

Smallish body sherd collection

1 frag. ring footed base, pinkish fabric

1 amphora handle frag., 1 amphora toe

1 strap handle frag.

1 body sherd with handle base

1 body sherd red glaze, thickish fabric

1 " " coarse ware, incised wavy line.

1 " " rounded base with 8 sieve holes.

1 coarse ware open-mouthed rim frag.

1 very fine rim + body of red glaze bowl

4 rim frags., 1 fish plate, 1 outturner gritty red

(rimmed) sherd base of 11.10.91 21.8.91 T = 228 1p ad 100 20 X

T35 [2] (1) 14/10/91

Largish body sherds

3 coarse ware handles, 1 complete.

1 body sherd + handle base

1 base frag. of white glaze, thick fabric

2 red glaze body frags?

1 amphora handle frag.

1 base frag., ring footed plainware

2 small rim, weak black, weak red

3 coarse ware rim frags?

T35 15/10/91 [3] (4)

Largish bag body sherds

6 coarse ware ring base frags

2 amphora toe frags., 1 small

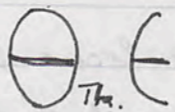
1 strap handle frag.

1 small greasy black ring base frag., 3 body frags of black glaze

9 rims of small vessels, 3 of fish plate-type, 1 weak red, 1 weak red/black

otherwise

1 storage toe frag, large coarse ware



3

There is a clear E, either epsilon or omega, on one side of the tile.

22/9/91

We're clearing the East side of the trench between the room + the bank + hope to reveal the exterior of the house. The masonry appears different + may do the trick. We continue on locus [3], with little in the way of pottery, a piece of basalt mortar (for m. + pestle), nicely shaped, but little else. I shall leave the measurements of the floor + doorways to the architect. We shall be opening out a new room to the S. of T26 which will be 7m x 9m. (7 along the E/W axis) in order to conclude the adjoining room. It won't have its flooring in place. Between the outer + inner walls are several cm. of packing of limestone. The amphora hole is about 17cm diameter, 110 deep. for storing a tied vessel. By + large the room to judge from the pottery was some sort of scullery: certainly not a domestic function like sleeping or eating. [3] (23) is some dark glass fragments, [3] (24) nails frags. On the outside the exterior wall is so far at least one meter down. I suspect we shall have to go down at least two to get to bedrock. Between the exterior + interior walls is a packing of limestone, now very crumbly. There has been a little bone + charcoal + a largish bag of non-descript pottery including a very narrow-necked amphora = [3] (25); [3] (26) is the frag. of basalt mortar. [3] (27) is a bone spatula frag.

23/9/91 We're continuing on the East Side of the East Wall, probably getting in some sections to below the foundation level to judge by the rusticated + drafted blocks different from the blocks above. Having started this we'd best continue all day. I'll call this new locus [4] at or below postulated ground level. I imagine there'll be another meter before we hit the bed. There is very little bone + charcoal, just tumble + brown light earth. A nail frag. is [4] (1). At the point where the rustication begins the stratum changes to packed rubble, suggesting we are now below original ground level + going into the foundation level. Some pottery + bone but basically sterile of artifactual material. A bronze or iron pin is [4] (2). As we get down further there is more deliberate stone + packed rubble, almost devoid of anything but stone. Pottery is [4] (3) plus bone + charcoal.

T35 16/10/91 [3] [3]

Undistinguished body sherds

1 amphora toe frag

2 handle frags plain ware

1 fish plate base frag

3 rim frags. coarse ware

2 ring footed base frags.

1 base frag. round / footless frag

1 red glaze round / footless frag

1 weak black lamp frag(?) ~~or rim~~

3 courses of rusticated stone have appeared so far, plus 2 courses of dressed blocks above. We continue to go down in one 2 meter section on 24/9/91 whilst opening the new trench (T.30). I suspect we may have to go down quite some way before hitting the jebel.

Some two + a half meters down a charcoal heap of ashy material shows a fire-place whilst the foundations were being built. The level is 2.8m. : a pottery frag. of schinus spotted red ware in this fill, but almost nothing now but crumbly stones. Such pottery will be [4] [4]. We've had to call it off after 3 meters as it is getting too dangerous with the stone packing giving way. 5 courses of beautifully rusticated stone have been uncovered. There are more to go before getting to bedrock. An East-West retaining wall also seems to have been there for building up the podium of the house.

3 corners of building above this appears to be for...
 The contents of the room in one of the...
 while opening the new door (T.20)...
 to show quite some way before...
 some two or three meters above a...
 material mass a fine place...
 The hole is 2.8m: a...
 but some...
 it's not...
 with the...
 has been...
 in...
 building up the...

T.20 20/9/01

To the S. of T.20 we have started surface clearance
 of T.20 a 7 x 4 m...
 There is a fair amount of fill for the...
 road which we're remaining by the way.

A beautifully preserved...
 surface level of clearance...
 east - stone from...
 beyond the wall...
 preserved...
 in the fill...
 that there is...
 for fill from...
 to be...
 T.20

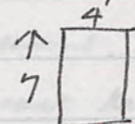
20/9/01

20/9/01...
 from...
 fill...
 to be...
 cleared...
 20/9/01

20/9/01

20/9/01...
 to be...
 and...
 a...
 building...
 with...
 coming up...
 removed...
 in...
 20/9/01

T.30 24/9/91

To the S. of T.26 we have started surface clearance of T.30 a 7 x 4 m. trench designed to complete the adjoining room \uparrow . There is a fair amount of fill for the wheelbarrow road which we're removing by shovel.

A beautifully preserved arrow head becomes \square ①. \uparrow from the surface level of clearance. No content. There is a great deal of disturbed earth + stones from earlier trenches. I doubt whether we'll get much beyond the wall footings here. Also small coin in surface level, well * preserved, is \square ②, nail \square ③. Some plain red plaster is coming up in the fill near where I postulated the east wall of the building is. Other than that there is little but rubbishy soil which I suspect is largely from fill from other trenches. \square ④ is pottery for the day - nondescript. I'd say the plaster isn't very indicative but has strayed into the fill.

* not in record. = 91.299

25/9/91

We'll continue on locus \square 1: it's clear from grass + roots further down that there was several cm. of fill before the original topsoil. It'll be slow going all day, with little to show for it. X date pip will go into the charcoal box. Otherwise nothing to report but for a second date pip! The little pottery will be \square ⑤

26/9/91

I'll make this locus \square 2 to-day as we chip away below the surface soil. Like elsewhere there is about $1\frac{1}{2}$ meters of fill, half of which is soil from floor up, beyond that crumbled limestone from the building's collapse + subsequent rotting. \square ① will be piece of iron fairly well up in the topsoil. Plain plaster in white + red only is coming up on the west side of the trench. 1m 40 x 330 x 370 stone removed, prob. from T15 originally. A fruit pip also come \square ② up. Pottery is nondescript in the fill \square ②

NB Money
for Hadija.

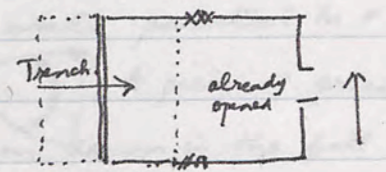
10/10/91 28T

Faint handwritten notes on page 18, including a small diagram of a rectangular area with an arrow pointing upwards.

brass in floor

28/9/91 T.30

Continuing basically down the W. side of the room wall which divides the trench E/W. I'll call this locus [3] but don't expect much excitement. Wheelbarrow missing, so going is slow. ① is a nail in the next level. We are burrowing among the rocks - artefactual - of the tumble of the building: underneath will be light soil until the floor. We have removed several large but damaged stones, none worth measuring. A fair bit of light mortar is coming up in the vicinity of the exterior wall. The wall itself at surface level is extremely decayed + is impossible to retain adequately. There is a small quantity of wood samples in the SW corner. Basic shape of trench is as predicted:

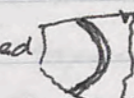


A little bone + pottery is [3] ②. Some Charcoal.

29/9/91 T.30

Still Clearing towards the floor: not a new locus really so we'll continue with [3]. I don't expect much excitement. A clay loom-weight is [3] ③, a small piece of worked iron [3] ④ plus a second piece, and a basalt round pounder is [3] ⑤. Quite a substantial piece of wood under a stone is also coming up, plus a mollusc shell (2 sides). A copying roof-tile showing groove fitting is [3] ⑥. We are getting to the floor with a fair amount of coarse-ware pottery, some tiles, a surprising amount (in one patch) of wood samples, nails etc. The soil is dark + moist but very powdery. Wood sample has been bagged. The wall on the east side continues very fragile, the soil little but crushed limestone. A very substantial river pounder plus a large piece of basalt loaf grinder suggest further domestic use of this area. [3] ⑦ is a glass rim frag. from the outside area, east side, south end; I've bagged a second substantial rim frag. of glass with this also. A third river mollusc shell off the floor. Two Zambael of pottery will be [3] ⑧ Bags ① + ②. Substantial bone + charcoal. Plester with white + red in small quantity.

T.30 30/9/91

Pink Plaster is coming up just by the N. wall of T.30 + the blocked doorway. There is mainly white elsewhere although a little black. To-day, as we clear the floor will be locus [4], locus [5] will be outside on the East front. [5] ① is a piece of glass. The floor inside the room is very uncertain, consisting of the underlay packing rather than the flooring itself. Outside in [5], down in the soft packing of limestone powder in the S. end, about 1m. down, has come a stamped amphora handle, [5] ②. It should be a useful dating object for ante quem. [4] ① is a lampfrag. off the floor. We'll finish the inside of the room to-day + we'll try on the outside to see whether we can get the exterior of the wall parallel to + similar with T26. [4] ② is a frag. of roof-tils marked . A piece of green glaze fish-plate I've made object [5] ③ coming from down in the fill on the east side (exterior) of the dwelling. Two gambel of pottery will be [4] ③, [5] ④, bone + charcoal. A large nail piece is [4] ④.

*
inv.
91.
386
(main)

T.30 1/10/91.

A new trench is being measured out 6x4, to open up the remaining room on my plan for the season. This will be T33. We are doing the final clearance of the inside of the room + continuing along the exterior. Rusticated blocks are beginning to appear below what we assume was ground level. It is another not very interesting day's work. Below the 'ground level' where we have reached this at the ^{South} west end the earth + limestone gives way to packed rubble of small stones. The interior of the room appears to be producing poor quality stonework in the SE corner but it appears to be only supporting stones against the decayed wall, which, if we remove, will collapse. The floor is poor quality packed stone which I presume was once paved, though in the room to the south a hard mud floor is associated with the hearth. [5] ⑤ is nail frags from the exterior fill. White plaster is coming associated with the N wall of the trench, along with some frags of white with red lines/rubrications. We are two courses down now at the S end of the exterior wall - + still going down. I suspect it won't be as deep as

at the N end of T.26. We are starting on the surface of T.33, but there is nothing to show. We'll have two bags of pottery of coarse ware sort found outside the room down to ground level (little pottery thereafter) - [5] (6), bags 1 & 2; quite a lot of bone + charcoal.

There's little to show additionally about the function of the room, the pottery seems, while plentiful, of no special quality, otherwise merely a side room servicing the main room, plastered in solid colours.

2/10/91

We're continuing to clear in locus [5] outside the room on the East side + have got down two courses so far, after the exposed exterior wall of the house, one (the first) course being rusticated. We'll go down for the rest of the day to expose the foundation all the way. [5] (7) is a nail piece, pottery [5] (8), bone & charcoal.

: Hadlii Muhammad 1050

5/10/91

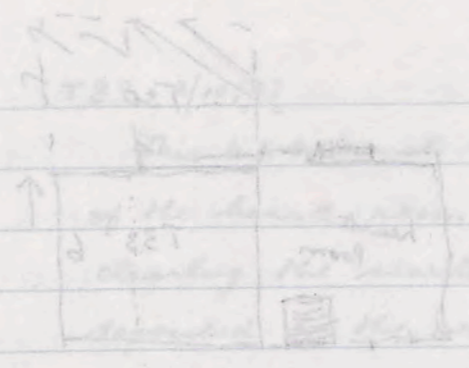
Continuing to clear along locus [5] along the exterior of house. There is a little pottery but basically nothing but sterile fill of rubble stones. We will go along about 3 courses + dig down in the south end in an attempt to get to bedrock. We've stopped at 10.30 a.m. to await a ladder tomorrow. Pottery [5] (9) + some bone.

at the end of the ... the ... of ...
 ... the ... of ...
 ... the ... of ...

... the ... of ...
 ... the ... of ...

... 1972

... the ... of ...
 ... the ... of ...



... the ... of ...

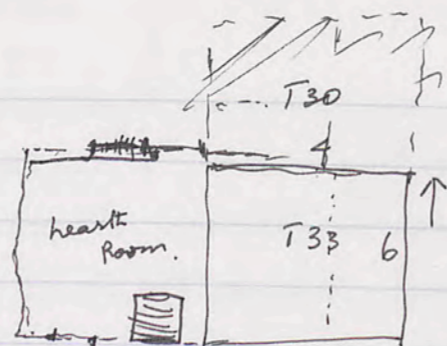
5/10/72 ...

... the ... of ...

... the ... of ...

... the ... of ...

... the ... of ...



T33 2/10/91

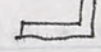
This 6 x 4 trench to the S. of T.30 should expose the remainder of the hearth room + the exterior room of the house. We're clearing the sterile top soil much of which will have been deposited for the wheelbarrow trail last year. There is very little in the way of pottery + a tumble of decayed stones, little else. [1] (1) is pottery from this level.

5/10/91 Continuing surface clearance: white plaster, where I project the east wall, is coming up in abundance, great abundance. We've already filled two Zambel + more is emerging. White only, so it's fair to deduce that at this top level of the surviving wall, there was white plaster only. [1] (2) is a frag. of glass from the surface level, [1] (3) a nail. Already the E/W wall on the south end and the N/S wall in the middle of the trench are becoming visible. There is a great deal of dirt of the east side - loose build-up from the wheelbarrow track - with the original level several cm down. [1] (4) pottery for the day.

6/10/91 Late start due to light rain. Will spend day shifting dirt from the trench. A great deal of white plaster in large chunks is coming up in the vicinity of the east wall. Only a little pottery. [1] (5) nail frag., small bag of wood; The little pottery will come tomorrow.

not indist inv. 91.990 v5

7/10/91 Coin coming up in the wind-blown fill. This will be locus [2], (1) = coin, from inside the room. The room is emerging predictably with the exterior wall parallel to the rooms further to the north. White plaster (only) continues in abundance. On the exterior side we have crushed limestone soil, on the interior wind-blown brown fill, for the remaining .75m. until the floor there is almost nothing but soil.

Stone 680 x 300 x 160 with 300 x 220 projection (broken) 
560 x 390 x 200 (broken), plus a guttering piece all removed from exterior level.

We are shifting the sterile rubble to the exterior of the house by shovels:

it appears to be almost entirely without artefactual material. It is locus [5]
 [3] ① is a glass frag. [2] ② from near the floor inside the room is a figurine
 frag. (? neck & head). Near here also a large slab of worked basalt grinding
 surface. Little else to report. On the exterior face we are getting through
 a great deal of crushed limestone fill to the dressed stone as it survives
 -presumably below ground-level since antiquity. [3] ② is a metal pin, [3] ③
 is pottery from the exterior, [2] ③ pottery from the interior, a large bag of
 wood from [2] + some bone from [3]

8/10/91

Continuing to clear the floor inside the room (locus [2]) and outside
 the room (locus [3]). From [3], in the limestone, has come [3] ④, a
 metal stud. There is much decayed limestone until the first course of
 rusticated stone. [2] ④ is a coin off the floor inside the room, [2] ⑤ is
 a metal length with curved end (hook) + shoulders, also off the floor.
 [3] ⑤ a nail from the exterior fill.

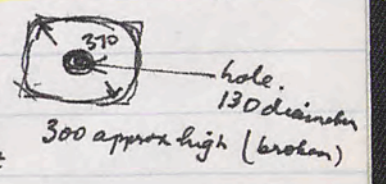
not in list.

- 700 x 540 x 280 block removed.
- 1040 x 320 x 550 " " " " }
- 540 x 520 (broken) x 250 " " " " } from interior of room.

There is nothing but fill + a little coarse pottery on the exterior. The
 floor on the interior is a hard beaten earth. Was this a kitchen?
 Little else to report. [3] ⑥ pottery, [2] ⑥ pottery

9/10/91

We'll finish the clearance of the room of T.33 + continue on
 down several courses along the exterior. There is a wall emerging
 = toilet! in the bank in the SE corner which will have to be investigated
 another season. A quern block (broken) has come up:
 in the interior of the room (limestone) + a number of
 dressed but broken stones. One 550 x 540 x 240, the rest
 too broken to be worth measuring. [2] ⑦ is a nail from the floor, [2] ⑧
 metal pin, [3] ⑨ metal pieces (? hinges) from near the N. doorway, pottery [2] ⑩
 plus a bag of bones.



10/10/91 T33

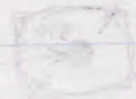
We're clearing all day among the rubble - almost no pottery, a little charcoal - on the exterior of the house trying to get down at least 3 courses the full length of the 3 rooms on the east frontage. This will be locus [3] continued, (10) is a nail. ^{think we} We have reached the Tabel at the extreme S. end at 3 metres down measured from the present height of the wall. We'll clear along this area + perhaps clear the foundation trench (if one) cut into the quarried + level bedrock. Alas! It wasn't the foundation level but simply packed rock. There will be a small bag of pottery, [3] (10), plus charcoal + bone.

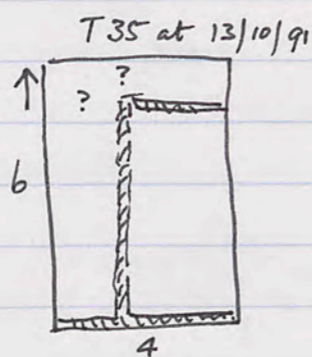
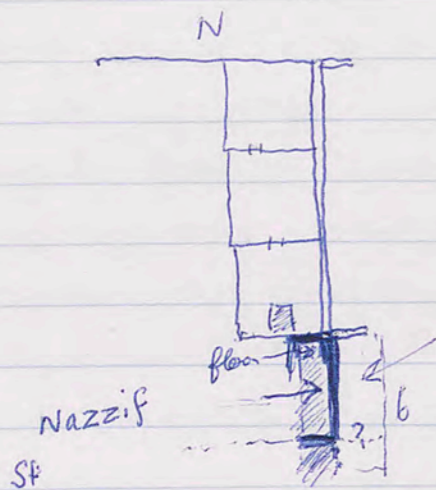
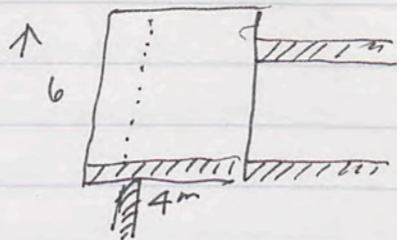
Conclusion. Nowhere along the 3 room extension was the Tabel encountered. It must be more than 3m. down on the N. end + more than 2m. down on the S. end. The top course + basically the second course of rusticated stones are so consistent that it suggests they were intended to be seen as a foundation level but at the point of rustication the soil level does change dramatically to rubble packing throughout. It is quite consistent, can be seen clearly in the baulk. The wall at the S end of T. 33 on the exterior (E/W) is quite different + gives the impression of being merely a supporting / retaining wall, certainly not to be seen + not carefully constructed.

The function of this hearth room cannot immediately be determined. It was plastered - + therefore presumably roofed. But no great evidence of domestic use was to be seen. A room to keep warm in, in winter, perhaps.

v.e. toilet was built against it.

foundation pottery.





T.34 12/10/91

Opening a new trench immediately to the S. of T.33 6m(NS) x 4m(EW), no baulks, to ascertain continuation of long room + eastern exterior of the building. 660 x 200 (approx) x 1m30. Large stone removed from surface: there is a great deal of worked but very badly battered stones on this surface level, clearly fallen from the surrounding walls. The baulk shows this clearly - about 1 m. of stones + then 1 m. (approx.) of fill. There will be little but shifting dirt for the next few days - + we may not get to the bottom of the trench before the end of the season. There is little pottery: much of the first clay will in fact be clearing the wheelbarrow track of 1990. No bone, no charcoal, pottery ①.

T.35 13/10/91

Continuing in locus ① for the remainder of the trench. Little so far revealed except the predictable EW wall in the N. part of the trench. We should see to-day if the NS exterior wall continues on a line with the rooms to the N. ① ② is a small piece of metal from the fill. By 8.30 a.m. it does look as if we do have in fact the NS wall, as well as the EW wall in the S. part of the trench. There is next to no pottery or material other than dirt + crushed stone. A very little plaster - the odd small piece of red or black in the debris level. A clay loom weight has come up against the N wall of the trench - ① ③, a nail from the same location ① ④, and a little limestone container ① ⑤ which has red pigment ① ⑤ (the top edge is broken, suggesting it came from a larger container). There is much ash coming up in the NE corner against the wall (from the fire in the adjoining room?) plus charcoal but no tannour is being met. There will be one bag of nondescript pottery ① ⑥, a bag of bone + one of charcoal.

To-morrow it'll be a new locus, viz. ② as we get towards the floor

The Calls

Saria Tissa - a leggom Margeria! NBos - saar: 9 o'clock

Istra - ahar ashara degiger! " o'clock.

Today it will be raining... I don't know how difficult it is... in the forest.

700... 710... 720... 730... 740... 750... 760... 770... 780... 790... 800... 810... 820... 830... 840... 850... 860... 870... 880... 890... 900... 910... 920... 930... 940... 950... 960... 970... 980... 990... 1000...

900... 910... 920... 930... 940... 950... 960... 970... 980... 990... 1000... 1010... 1020... 1030... 1040... 1050... 1060... 1070... 1080... 1090... 1100... 1110... 1120... 1130... 1140... 1150... 1160... 1170... 1180... 1190... 1200...

1200... 1210... 1220... 1230... 1240... 1250... 1260... 1270... 1280... 1290... 1300... 1310... 1320... 1330... 1340... 1350... 1360... 1370... 1380... 1390... 1400... 1410... 1420... 1430... 1440... 1450... 1460... 1470... 1480... 1490... 1500...

1500... 1510... 1520... 1530... 1540... 1550... 1560... 1570... 1580... 1590... 1600... 1610... 1620... 1630... 1640... 1650... 1660... 1670... 1680... 1690... 1700... 1710... 1720... 1730... 1740... 1750... 1760... 1770... 1780... 1790... 1800...

1800... 1810... 1820... 1830... 1840... 1850... 1860... 1870... 1880... 1890... 1900... 1910... 1920... 1930... 1940... 1950... 1960... 1970... 1980... 1990... 2000...

T35 L2 14/10/91

6.00 We arrived

6.30 Last of the workers arrived - I gave them a dressing down, but they had a point; the cloud cover was too heavy for them to know when dawn was.

Weather: heavy cloud cover, light NW breeze.

Today we will be excavating L2 as floor level has been struck. I have had great difficulty in persuading the men not to use the sledge hammer on everything in the trench.

7.15: Work progressing well. Nail found 0.5m from N wall 3m from east (object #1)

7.40 Glass fragment found 1m from from south 3m from east (#2)

8.00 Glass fragment found 1m from north wall 3.5m from east (#3)

8.05 Bronze knife blade fragment found 0.5m from south 2.5m from east (#4)

8.10 Metal object found as at 8.00am (#5)

8.25 Bronze pin fragment 3m from north wall 3m from east (#6). Large chunks of plain plaster turning up as the western section is excavated.

9.45 Bronze fragments found in wellbarrow (#7)

10.00: Fahar is forcing being ill. I have told him to go home on half a day's pay. He won't go!

11.00 The women have completed the NW section in amazingly fast time. want me to tell GWC how good they are. Solid floor reached with good wall N&E.

Fahar has made a miracle recovery.

11.20 The wind is really picking up. Have opened up the NE section of the trench.

Nail found on surface - 2m from north 0.5m from east (#8)

11:35 Bronze fragment found 1m from east 0.5 m from south.
(#9)

11:45 Rain interrupted play for 25 minutes

12:10 Back at work.

Iron fragment found 0.1 m from south, 0.25 m from east (#10)

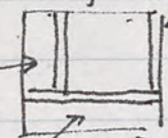
12:40 The north east section is progressing slowly to the tumble level.
The south section is virtually complete with little sign of continuing wall.

12:45 Sent the broken wheelbarrow down to the car.

15/10/91

We'll be clearing in two areas, the S end of the trench, plus the east side of the wall.


There is little but dirt + rocks.



I'll call this locus [3]

[3] (1) is a nail from the S. sector

I'll clean up the wall on its West side. It looks curiously temporary, as opposed to other walls surrounding it. The floor is clear + definite, and quite high — but its continuation can be seen in the bank where the floor was cut through to bedrock in the adjoining trench.

Further nails are appearing + a v. little white + red plaster — probably stray pieces. A piece of glass becomes [3] (2), and a rein piece of worked marble (bowl or basin) becomes [3] (3)  coming from the exterior fill.

A stone 650x600x320 (broken) removed from SE corner. We appear to have a blocked doorway — or maybe a small doorway with tumble — in the NE corner. I'll investigate to-morrow. There will be one bag of nondescript pottery [3] (4), a bag of bones + a small amount of charcoal. The wall on the S. side is the regular header + stretcher, but the E wall appears on the interior to be much less regular. As we go down on the exterior it is beginning to appear better dressed + more regular.

19/10/91
 11:25
 11:30
 11:35
 11:40
 11:45
 11:50
 11:55
 12:00

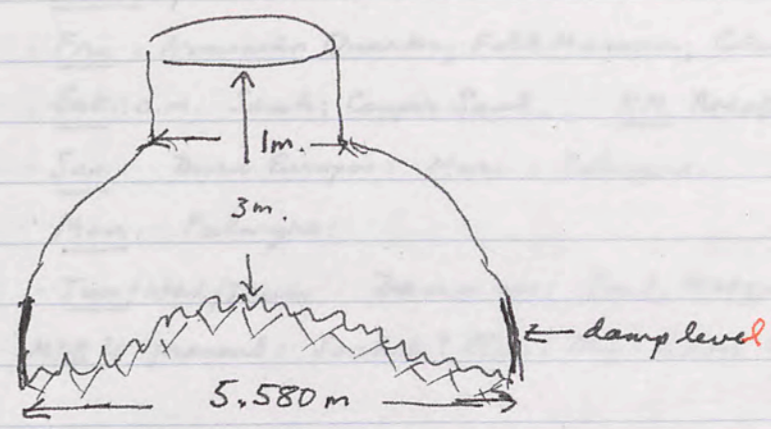
12/10/91
 12:00
 12:05
 12:10
 12:15
 12:20
 12:25
 12:30
 12:35
 12:40
 12:45
 12:50
 12:55
 13:00

16/10/91

Continuing the clearance of the exterior to the 'long room', which I'll call to-day locus [3]. Basically there will be little in the way of pottery, but packing for the exterior: glass frags. will be [3]①. We have hit the jebel some 1.5m. down & will nearly finish clearing the trench to-day. Where I thought there were dodgy doors on the inside appears to have been reasonably built on the outside. The EW wall on the exterior of the wall appears to be superficial only & sitting on the original ground level. The exterior wall is not built nearly so beautifully as the wall to the north. A metal pin + frag. becomes [3]②, [3]③ pottery plus bag of bone + of charcoal.

i.e. it proved to be interior, as the washroom & toilet room provided the exterior wall.

Cistern, Acropolis, 9/10/91



Filled with a great deal of rubbish, including architectural elements, dressed blocks + one length of column. One piece rescued was cornice moulding plus guttering channel. It would take a fair amount of consistent clearance to get down to interesting levels. The rock is definitely artificially cut + rounded but does not appear to be plastered. The lowest half-metre all around is green with damp. The neck at the opening gives the appearance of being a natural crevice which has then been artificially extended + rounded. A well-head is presumed, now missing.

at looking most likely a mosaic all so, possibly at of having it. -31
slowly water

12/10/71, Aleppo, Syria



Handwritten label or note next to the sketch.

Faded handwritten notes, possibly describing the object or the location. The text is mostly illegible due to fading.

Faded handwritten notes at the top of the right page.

- Thurs: p.m.: Souk, Sharif.: Phone Embassy
- Fri: Armenian Quarter; Folk Museum; Citadel.
- Sat: a.m. Souk; Copper Souk. P.M. Rasafa, Halabiye, Deir-es-Zor.
- Sun: Dura Europos; Mari; Palmyra.
- Mon: Palmyra:
- Tues/Wed/Thurs: Damascus: Souk, Mosque; Baalbak.
- ?MDB's present: Jacket? Cloth? Rug? Silver Cig. Case.

Faded handwritten notes at the bottom of the right page.

✓T22 GWC trench: doorway treatments: marble paving slab: storage vessels.

✓T23 stylobate interior: smaller:

✓T24 " exterior: large: 2 large columns.

✓T25 Tom's small rooms: East side of stylobate

XT26 GWC trench (2): paved floor: flagstones: exterior

✓T27 ~~Tom's third trench~~ Julia's trench adjacent colonnade.

✓T.28 Tom's third trench: to get to East extension of building.

T.29 G+J's new trench on ^{South} East side, large.

XT.30 GWC's third trench: room completed: exterior

T.31 T+J's trench adjacent to T.28: T.32 will be trench to include stylobate to E.

XT.33 GWC's fourth trench: complete heart room: exterior.

-T.34 G+J's trench immediately to S. of T.29,

T.35 6x4 m " (SW) " " " " T33

double

	10/9/91	11/9/91	12/9/91	14/9/91	15/9	16/9	17/9	18/9	19/9		
Muhammad al Ahmed	X	X	X	X	X	X	X	X	X	770	X
Muhammad Hussein	X	X	X	X	X	X	X	X	X	X	X
Kalaf al Hassan	X	X	X	X	X	X	X	X	X	X	X
Adlie Hussein	X	X	X	X	X	X	X	X	X	X	X
Mahmoud al Ahmed	X	X	X	X	X	X	X	X	X	X	X
Hadlie Hussein	X	X	X	X	X	X	X	X	X	X	X
Haloua al Hussein	X	X	X	X	X	X	X	X	X	700	X
Lawdyan Ali	X	X	X	X	X	X	X	X	X	X	X
Juwaher Muhammad	X	X	X	X	X	X	X	X	X	X	X
Dawar Ali	X	X	X	X	X	X	X	X	X	X	X
Ahmed Ali	X	X	X	X	X	X	X	X	X	X	X
Sonera Ali	X	X	X	X	X	X	X	X	X	X	X
Mahmoud al Muhammad	X	X	X	X	X	X	X	X	X	X	X
Hadlie Abdulrahman	X	X	X	X	X	X	X	X	X	X	X
Sarah	X	X	X	X	X	X	X	X	X	X	X
Hassan	X	X	X	X	X	X	X	X	X	X	X
Fukreha	X	X	X	X	X	X	X	X	X	X	X
Nehela	X	X	X	X	X	X	X	X	X	X	X
Halid Ali	X	X	X	X	X	X	X	X	X	X	X
Mahmoud al Nassir	X	X	X	X	X	X	X	X	X	X	X
Hadlie Muhammad	X	X	X	X	X	X	X	X	X	X	X
Shamra al Hussein	X	X	X	X	X	X	X	X	X	630	X
Fatra	X	X	X	X	X	X	X	X	X	X	X
Sahar Abdone	X	X	X	X	X	X	X	X	X	X	X
Hadrya taha	X	X	X	X	X	X	X	X	X	490	X
Donly	X	X	X	X	X	X	X	X	X	X	X
Ali	X	X	X	X	X	X	X	X	X	350	X
M. King Ali	X	X	X	X	X	X	X	X	X	X	X

paid 560 26/9 490

	5/10 Sat 21/9/91	Sun 22/9/91	M 23/9/91	Tu 24/9/91	Wed 25/9/91 Friday	Thurs 26/9/91	Sat 28/9/91	Sun 29/9	Mon 30/9	Tue 19/9	20
Yahye T	X	X	X	X	X	X	X	X	X	X	X
Mtherky T	X	X	X	X	X	X	X	X	X	X	X
Omar	X	X	X	X	X	X	X	X	X	X	X
Ahmed Yah T	X	X	X	X	X	X	X	X	X	X	X
Hadija Yah T	X	X	X	X	X	X	X	X	X	X	X
Hajja Adoula T	X	X	X	X	X	X	X	X	X	X	X
Fatouma T	X	X	X	X	X	X	X	X	X	X	X
Haja Mouina J	X	X	X	X	X	X	X	X	X	X	X
Turkuye J	X	X	X	X	X	X	X	X	X	X	X
Moussa Allouie T	X	X	X	X	X	X	X	X	X	X	X
Moussa Allouie T	X	X	X	X	X	X	X	X	X	X	X
Sabah Mousa J	X	X	X	X	X	X	X	X	X	X	X
Halid Mousa T	X	X	X	X	X	X	X	X	X	X	X
Hannan Hussein T	X	X	X	X	X	X	X	X	X	X	X
Allouie	X	X	X	X	X	X	X	X	X	X	X
Hadija Allouie	X	X	X	X	X	X	X	X	X	X	X
Nazika	X	X	X	X	X	X	X	X	X	X	X
Natira	X	X	X	X	X	X	X	X	X	X	X
Farhan	X	X	X	X	X	X	X	X	X	X	X
Mounain	X	X	X	X	X	X	X	X	X	X	X
Krema	X	X	X	X	X	X	X	X	X	X	X
Shams al Hassan J	X	X	X	X	X	X	X	X	X	X	X
Fadia al Nasser T	X	X	X	X	X	X	X	X	X	X	X
Hadija T	X	X	X	X	X	X	X	X	X	X	X
Hadija Mahmoud T	X	X	X	X	X	X	X	X	X	X	X
Hussein J	X	X	X	X	X	X	X	X	X	X	X
Ahmed Shalash T	X	X	X	X	X	X	X	X	X	X	X
Hussein Nasser J	X	X	X	X	X	X	X	X	X	X	X
Ahmed Allouie T	X	X	X	X	X	X	X	X	X	X	X
Shams al Ahmed	X	X	X	X	X	X	X	X	X	X	X
Turkuye	X	X	X	X	X	X	X	X	X	X	X
Ahmed al Sakh J	X	X	X	X	X	X	X	X	X	X	X
Amour Mithamid J	X	X	X	X	X	X	X	X	X	X	X
Hadija J	X	X	X	X	X	X	X	X	X	X	X
Wafiq Hussein J	X	X	X	X	X	X	X	X	X	X	X
Sabha J	X	X	X	X	X	X	X	X	X	X	X
Sahara J	X	X	X	X	X	X	X	X	X	X	X

Standard pay for two weeks = $14 \times 70 = 980 + 1 extra = 1,050 + 50 = 1,100$
 $\frac{49,000}{1,100} \therefore \text{change } 1,500$

- Mahamoud al Ahmed.
- Mahamoud Hussein
- Halaf al Hassan
- Hadi Hussein / Hadi