

MAIN GATE + STOP

2 June -

290 ✓

BOOK 3

3 MCGILL'S \$2.85 NEWSAGENCY



coins —

# A4 NOTE BOOK

No. 595

|              |      |
|--------------|------|
| P. J. CONNOR |      |
| JEBEL KHALID | 1990 |



φ

φ 1

Saturday 2 June 1990

Weather: Sunny, cool breeze from NW at first.

Workers: North: Younis, Younis, Khalid, Tameer, Halima  
 Aziza, Aziza Saloum, Amouna (8)  
 South: All except Najah (= Saleh) (7)

### NMG-2

Working basically from S to N, we are working down to a level equal to a 'platform' which has been cleared in the SW corner. It was evident that blocks ~~would~~ must have been removed above this level (at this point) since we have a further bank of blocks a little to the E.

It appears however that this level is the level of the projected 'bench' of the interior space, since the blocks to the E clearly do not reach as far as the N boundary of this 'platform'.

The construction is not complicated but this corner showed provide specific visual evidence of how the wall proper of the inside room (that is above floor level) was set back slightly on the foundations.

So far, at the W, we have no indication of the W boundary of the interior space and yet the edge of the trench is but a short distance from Jack's corner trench of 1989.

I have called our deposit body stratum (3) because it contains a quite heavy mixture of limestone chips (except perhaps at the W). We will work on this pass until the whole trench is brought to the level of the 'platform'/'bench'.

7.35 Inspection of Jack's corner trench shows a gap between 2 blocks at the E boundary which is filled with chips & chunks of limestone. I now take this point to be the W boundary of the interior space. I will have to remove the bank in order to uncover it.

2.6.90

2.6.90

SMG 1 S (3)

medium wt coarse ware body sherds

3 base frags coarse ware bowls

1 handle frag

1 strap handle frag

1 neck frag c/w jar w. pic crust

1 body frag frag ware w. handle root

5 body frags cooking ware

2 body frags rg

2 assorted rim frags rg bowls

4 rim frags fish-plates

1 rim frag echinus bowl

2 rim frags small c/w bowl

1 rim frag c/w bottle

1 rim frag c/w jar

1 rim frag small gray ware vessel  
pebble

1 frag basalt mortar.

2.6.90

SMG 1 S (3/4) frag

large wt coarse ware body sherds

2 rim frags c/w jar, pic-crust dec.

2 rim frags mortaria

1 rim frag large c/w jar

1 body frag c/w with handle root

3 rim frags fish plates

1 rim frag bowl w. black paint 'drippes'

2 base frags c/w jars/bowls

1 rim frag rg echinus bowl

1 rim frag semi-coarse bellied jar

1 rim frag echinus bowl

1 rim frag dull-rg bowl

(almost full profile)

1 base frag large rg plate

2 body frags rg

5 rim frags c/w jars

pebbles including one frag w. hole

10 base frags coarse ware bowls

SMG 1

Work continues today in two areas as on last Thursday: at the N and at the S.

At the N some rubble has been removed from the W end bringing us down to the level of the platform in centre W which was cleared in 1988. The soil deposit in this area I have called Stratum (4)

It is already clear today however that we have here the SW corner of the interior space and that we missed this in 1988 because of a certain (understandable) timidity in removing rubble.

The large blocks in the NW corner of the trench line the W boundary of this interior space.

At the S our clearing first and then excavation of a heavy mix of limestone chips seems to reveal the continuation of the platform. There is however a sign of some dark soil and it could be that the end of the Tower is located at this point (and even the join to the external face of the circuit wall). This area called SMG 1 S (3) 90.5+6

7.30 am. a rim frag of a relief moulded bowl 90.618 ✓  
from SMG N (4) just as we start to go below the level of the platform

7.35 am wind blowing up strong from W, very dusty

10 am.

It now seems clear that at SMG 1 S we have the end of the tower wall.

JK

2.6.90

SMG 1 N (4)

medium wt coarse ware body sherds

3 base frags c/w bowls/jars

10 rim frags eching bowls

15 body frags cooking ware

2 rim frags cooking ware

1 handle root frag cooking ware

1 handle frag cooking ware

9 rim frags notched rim + 'notchless'

3 rim frags fire plates

5 rim frags c/w bowls/jars

1 rim frag flaring rim bowl

1 rim frag semi coarse bowl red paint

body frags semi-coarse

2 body frags rg

pebbles

1 body frag green glaze

1 small body frag gray ware

1 base frag t-c figure horse? INW. 90.61A

2.6.90

3

363/2

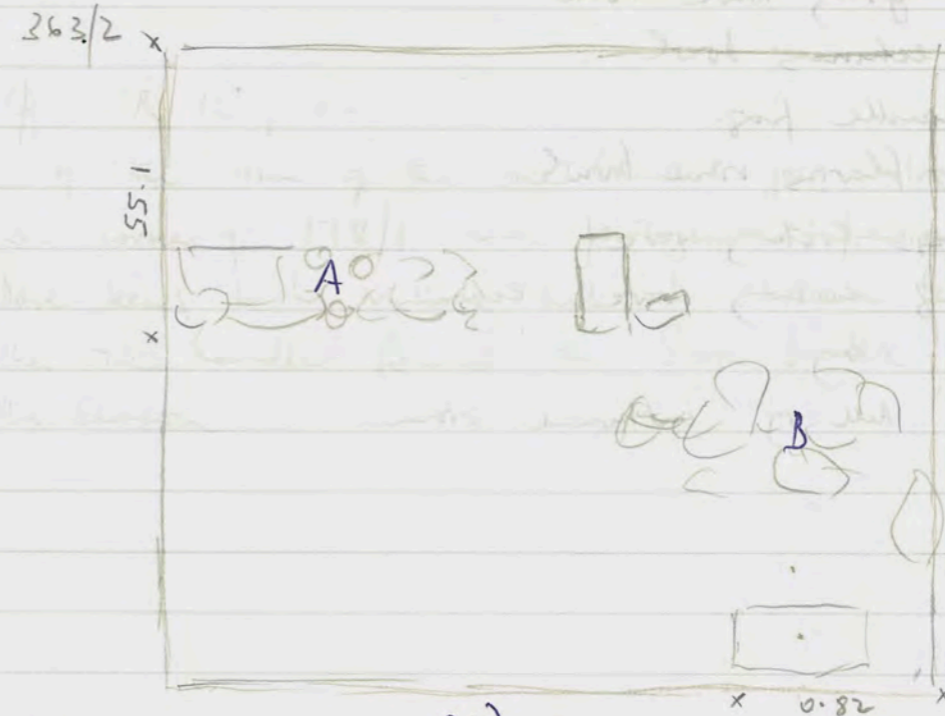
Journal + 5 sheets

Working 1511 in (3) from S to N. There is still no definition of a wall, though of course none is expected till then more to the N as a continuation of an EW oriented wall in 364/8

There does however appear to be a horizontally laid block in the SE corner of the trench.

The soil is light brown and not really soft. Progress is slow because there is only one pick worker.

12:15 pm



An EW aligned wall (A) is coming to light at the W side of the trench. It does not give the appearance of consummate building skills but it does seem to line up with the rubble wall in the trench to the E. There is some tumble at B but the rest of the trench at the S has a soil surface even if there are field-stones just below the surface.

2.6.90

SMG1 N (4) tag 1

Large wt cows were being shed

1 pitios rim fragment

76 base frags c/w bowls/jars

bray frags few-course

4 rim frags c/w jars

1 rim frag mortarium

~~1 base frag green glaze bowl inv.~~

~~1 rim frag relief-moulded bowl inv.~~

32 rim frags fish-plate

~~1 rim frag gray-wave bowl~~

1 rim frag echinus bowl

1 small handle frag.

1 rim frag flaring rim bowl

7 bray frags cooking ware

1 rim frag cooking ware echinus

1 bray frag by.

1 rim frag dull of outturned rim.

2.6.90

4

Radi's new trench 179/8

178/1 was completed last week and a new trench prepared and begun: on an unorthodox alignment which does not correspond exactly to the grid.

It takes the W wall of the 2nd occupation in Room 3 or at least the N metre or so

Since it is N + E of 178/1 it should perhaps be 179/8 better check while work has now completed

Work continues at E end of trench going basically through top soil and the soil below it was light-brown.

φ R 12, 1-

of the rim of the one handled jar extracted from the SE corner of 178/1 and photographed previously in situ. The base seems to be missing but it should be rounded like the one handled found in Stoa bank on first days of the season.

2.6.90

SMG 1 N (4) bag 2

large wt coarse ware body sherds

small wt fine semi-coarse body sherds

11 body sherd cooking ware

2 rim frags cooking ware

1 <sup>neck</sup> rim frag cooking ware

15 base frags c/w bowls/jars

1 amphora toe frag

1 handle frag

1 sharp handle frag

4 rim frags notched rim bowls

43 rim frags c/w jars

1 rim frag mortarium

23 flaring rim frags plates/bowls

13 rim frags echinus bowls

2 green tinged body frags with impressed curves + lines

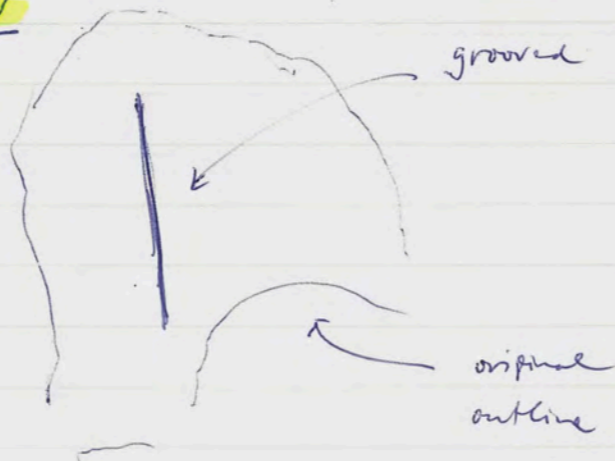
1 base frag rg bowl

1 rim frag fine fabric semi coarse bowl

1 rg body frag with 8 incised slipper



1 tc figure fragment inv



2.6.90

5.

SMG 1

SMG 1 N

10.45 we continue on the dark brown soil that lies below the level of the presumed 'platform' - at - centre - W. There is a great deal of pottery and a great deal of bone. I have bagged one lot of pottery alone.

At the SW corner of the interior space we are at a depth of not quite one metre.

2.6.90

NMG 2 (3)

medium wt coarse ware body shards

6 handle frags large c/w amphora

3 amphora toe frags

3 base frags c/w handle 2 with black paint

body frags vs

1 body frag big

1 body handle

3 rim frags c/w handle/feet

Sunday 3 2.6.90

6

NMG 2 survey at 10.55 am

At the E of the trench there appears to be a hard, smooth floor at a level considerably higher than the 'bench' that rings the interior space. It extends scarcely any way from the E branch of the trench.

In the rest of the trench I aim to bring the excavation level down to that of the 'bench'; but this little patch against the E wall (and central) has been puzzled.

On the platform level above the shelf, further from the east end of the trench, the wall proper

NMG 2 survey at lower level 'Project' has 5

Sunday 3 June 1990

Weather: slightly cloudy. sun. fierce wind from west.

Workers: North: Younis, Younis, Halima, Jumea, Khalid, (8)  
 Aziza, Aziza Saloum, Amrma.

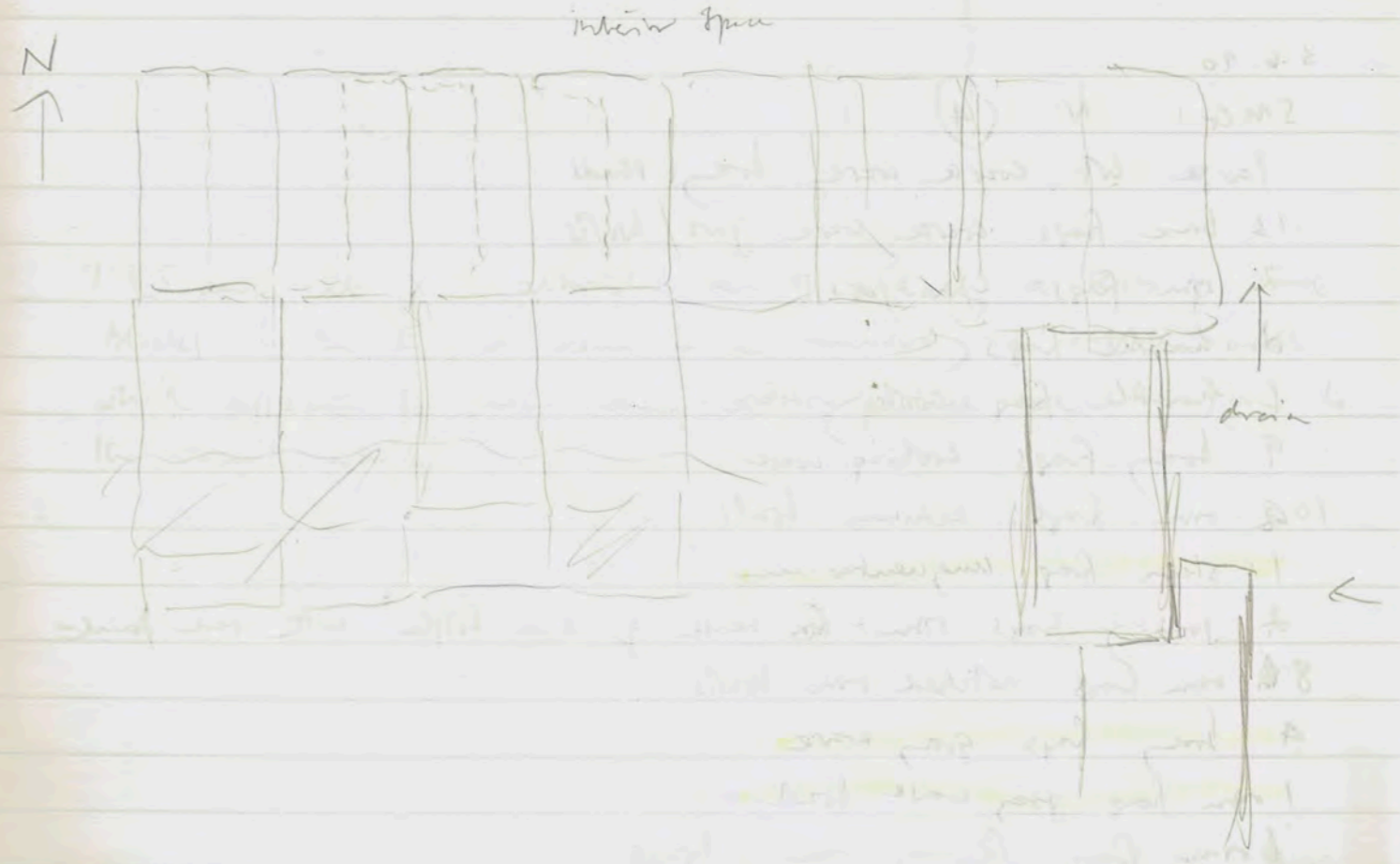
South: Muneed, Hussien, Ogal, Hamed Aziz, Hamed Saloum, Saleh, Mounsa, Hassan Abdallah (8)

NMG 2 (3)

Simply a matter of leveling off the trench with the 'shelf' of the interior space

On the 'platform' level which produces the shelf, <sup>are</sup> guidelines for the positioning of the lowest course of the wall proper

NW ← Note interlocking blocks at points where 'projection' has 5 towards main Gate



3.6.90

NMG 2 (3)

Small wt c/w body sherds  
 1 amphora toe  
 1 handle frag (stone?)  
 3 pebbles (inc. ~ flint)

One bag



3.6.90

SM 1 S (3)

- medium-large wt coarse ware pottery
- numerous frags cooking ware
- 7 base frags coarse ware bowls/jars
- 4 rim frags fish plates
- 1 rim frag mortar
- 2 handle frags
- 2 rim frags c/w jars
- 3 base frags rg bowls
- 1 rim frag worn rg bowls
- 1 rim frag rg bowl, ribbing
- 2 rim frags echinus bowls
- 3 large pebbles
- 1 half clay concretion

3.6.90

SM 1 N (4)

- large wt coarse ware frag sherd
- 13 base frags coarse ware jars/bowls
- 2 rim frags c/w jars
- 2 handle frags
- 1 handle frag cooking ware
- 9 body frags cooking ware
- 10 rim frags echinus bowls
- 1 stem frag unguentarium
- 2 joining frags rim + neck of c/w 'bottle' with red paint
- 8 rim frags notched rim bowls
- 4 body frags gray ware
- 1 rim frag gray ware bowl
- brim frag flaring rim bowls
- 1 rim frag rolled rim bowl
- assorted low heat semi-coarse ware

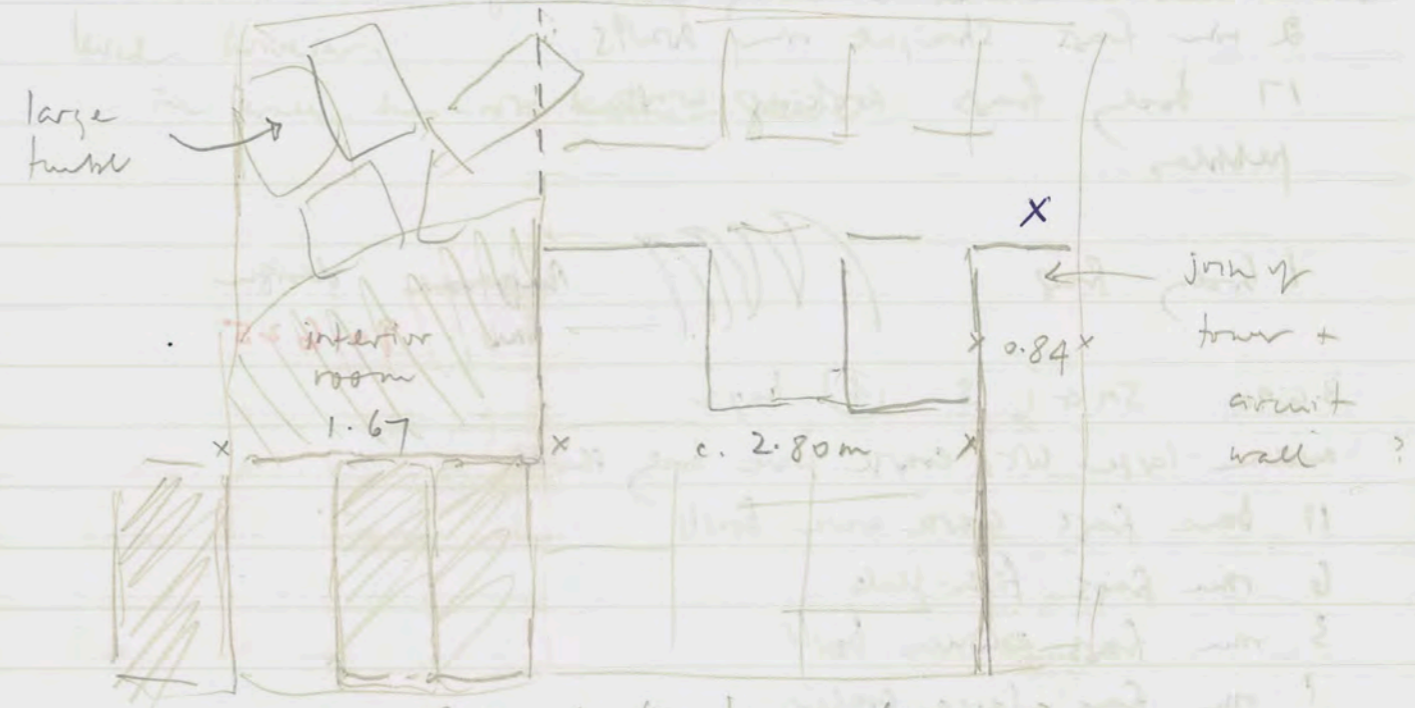
3.2.6.90

SM 1

Work continues at NTC N and S

At the N the soil is still dark brown (4)

N ←



where is the boundary here?

7.35 am at X although there is evidently a series of laid blocks to the E, we seem to be uncovering a rubble wall which appears to face them. I expected here the join to the circuit wall.

3.6.90

SMG1 S (4)

medium wt work ware body sherd

4 rim frags work ware bowls/jars

4 base frags work ware bowls

2 rim frags fish-plats

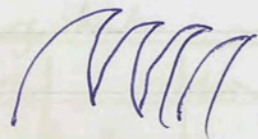
2 body frags fine rg

1 handle frag

2 rim frags straight rim bowls

17 body frags cooking ware pebbles.

1 body frag



Impressed design  
inv. 90.625

3.6.90 SMG1 S (4) frag 2

medium-large wt work ware body sherd

11 base frags work ware bowls

6 rim frags fish-plats

3 rim frags echinus bowl

1 rim frag large crater

1 rim frag shallow bowl/basin

2 stem fragments

8 body frags cooking ware

2 rim frags cooking ware

1 rim frag rg bowl base

1 base frag rg bowl impressed conc. circles inside + outside (tribbi) inv

1 work ware body sherd w. impressed ribbing

3 rg body frags

1 tile frag

1 half clay bonweight

363/2

3.6.90

Downer + 5 others

At the S of the trench work continues in (3). There is said to be a hard floor just below where we are working. This seems extraordinarily high for a floor.

A scrape however shows that there is indeed a hard-packed surface. This is only approx 0.53 m down from the soil surface at the S bank.

There is still a good deal of the S section to clear to this level however.

The wall has not become clearer. For a short space we see signs of a finished floor on the top of the gravel limestone deposit. It has a level surface and shows the circular hollows on the top of the trench to just below the depth of the shelf.

The sharpness of the E wall of the trench shows that the circular hollows shown can be within 0.15 m from the top of the last course above the shelf. My guess is 0.6 m high. To see signs of this level the floor level (as seen also in NMG1) came 0.45 m above the finished floor surface. What happened to the stone is hard to tell. It may have been kept clear to the rear vicinity to allow passage of water.

The shape of the S wall of the trench shows a perhaps more like that of the S wall of the NMG1 trench. The floor level is said to be completed to a certain

On the upper ground level of NMG2 there is a level which has been set of benches. These are 1 m apart and the line of the benches is the same as the line of the floor level of the gate. The present level of the benches is 1.40 m (4 ft) or 0.53 m or 0.53 m

NMG 2

9.45 on gale force winds from W !  
complete a level of the trench a little below level of  
shelf and then began to remove the slight depth of  
soil that constitutes the bank at the W. We showed  
find the W boundary of the interior room since there  
are solid built blocks further W

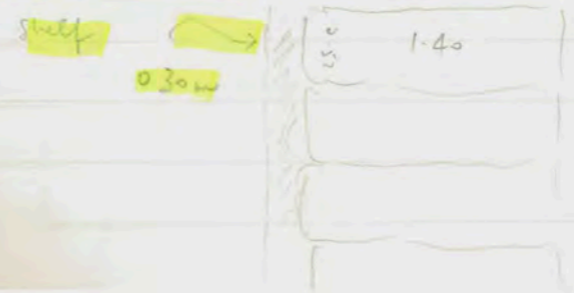
Proceed with clearing the tower looks to S of NMG 2

At the E end of the trench, but only for a short space  
are seen signs of a smoothed floor on the top of the crushed  
limestone deposit. I leave this level isolated and remove the  
crushed limestone over the rest of the trench to just below the  
depth of the 'shelf'

The stratigraphy of the E wall of the trench shows that the  
crushed limestone stratum comes to within 0.15m from the top  
of the 1st course above the shelf. This course is 0.60m high  
so we might say that the floor level (as seen also in  
NMG 1) came 0.45m above the planned floor surface. What  
happened to the drain is hard to tell: it may have been  
kept clear in the near vicinity to allow passage of water.

The structure of the S wall of the inner space is perhaps rather like  
that of the arms of the NW Tower: though the main Gate blocks  
are too crumbled to be certain

On the upper preserved level of NMG 2 there should have been  
two sets of 'headers' placed end to end over the thin  
cladding of the gate entrance decoration. The preserved length of these  
blocks is 1.40 (they are 0.52 or 0.53 wide)



Monday 4 June 1990

Weather: clear, sunny, breeze from NW  
Workers: North: Khalid, Jumaa, Younis, Halima, Younis, Amr, Amr, Amr, Amr, Amr, Amr (8)

South: Hamad Aza, Hamad Saloum, Saleh, Hussien, Abdullah, Hussien, Oofal, Mohamed, Mustafa

North: work today begins with general clean up area, and trenches

4.6.90

- EMG 5 cleaning
- small wt coarse ware frag sherds
- 3 handle frags
- 1 tile frag
- 2 rim frag c/w jar
- 1 rim frag cooking ware
- 1 base frag c/w jar/bowl
- 1 rim frag rg echinus bowl
- 2 rim frags attached rim bowls
- assorted frag frags peri-course ware.

at the back of the house (S of the house) is a small area of rubble and some broken bowls

of small N (at 7:10am) ... a certain ridge? ... that it is the SW end of the same room ...

4.6.90

SMC-1

A little needs to be done at SMC-1 S to clear soil above the white limestone deposit where I shall probably not remove at this point.

To calculate the extension of the trench I find that 3m W of the SW corner of the interior space requires quite some distance of extension, perhaps 4 metre extension in order to reveal the wall.

SMC-1 S is not what was expected. There seems to be a join of the circuit wall with the Tower, but the structure is more random and also more worn than expected. At the beginning of the outer face of the circuit wall we have some elements of rubble interposed between ashlar blocks. The ashlar blocks above are very decayed; those below have severely pitted faces or cushions.

The wall of the Tower, as it proceeds W from the circuit wall, is very rough in its present condition. It is however composed of ashlar blocks (as the top of the platform reveals) and there is one block towards the W of the trench line has a vertical face still.

In the W bank of the trench (S of the Tower) is another wall ~~structure~~ (aligned N-S) composed of a mixture of rubble and cut ashlar blocks.

\* SMC-1 N (A) 7.10 am. a t-c figure of an animal  
\* huffed subject. The legs may explain some other fragments  
= Persian Rider? ✓

That is in the SW corner of the inner room. We seem to be coming to a clay-like floor.

JR

4.6.90

SMG 1 N (4)

Smallish lot coarse ware frag sherd

1 base frag c/w bowl / jar

2 joining rim frags c/w jar

1 rim frag coarse ware jar / bowl

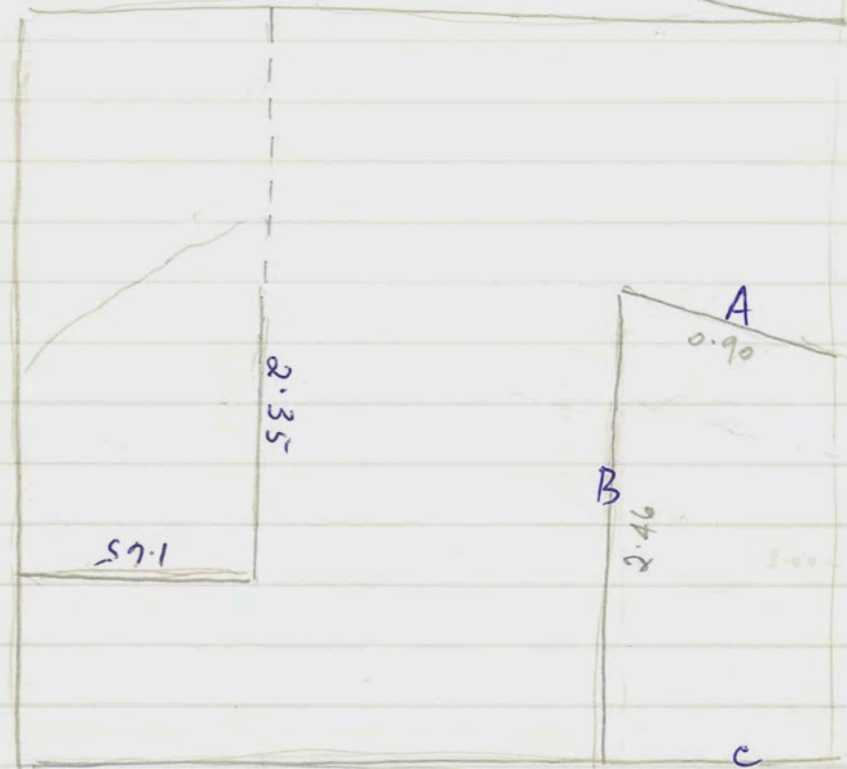
1 rim frag cooking ware

2 body frags.

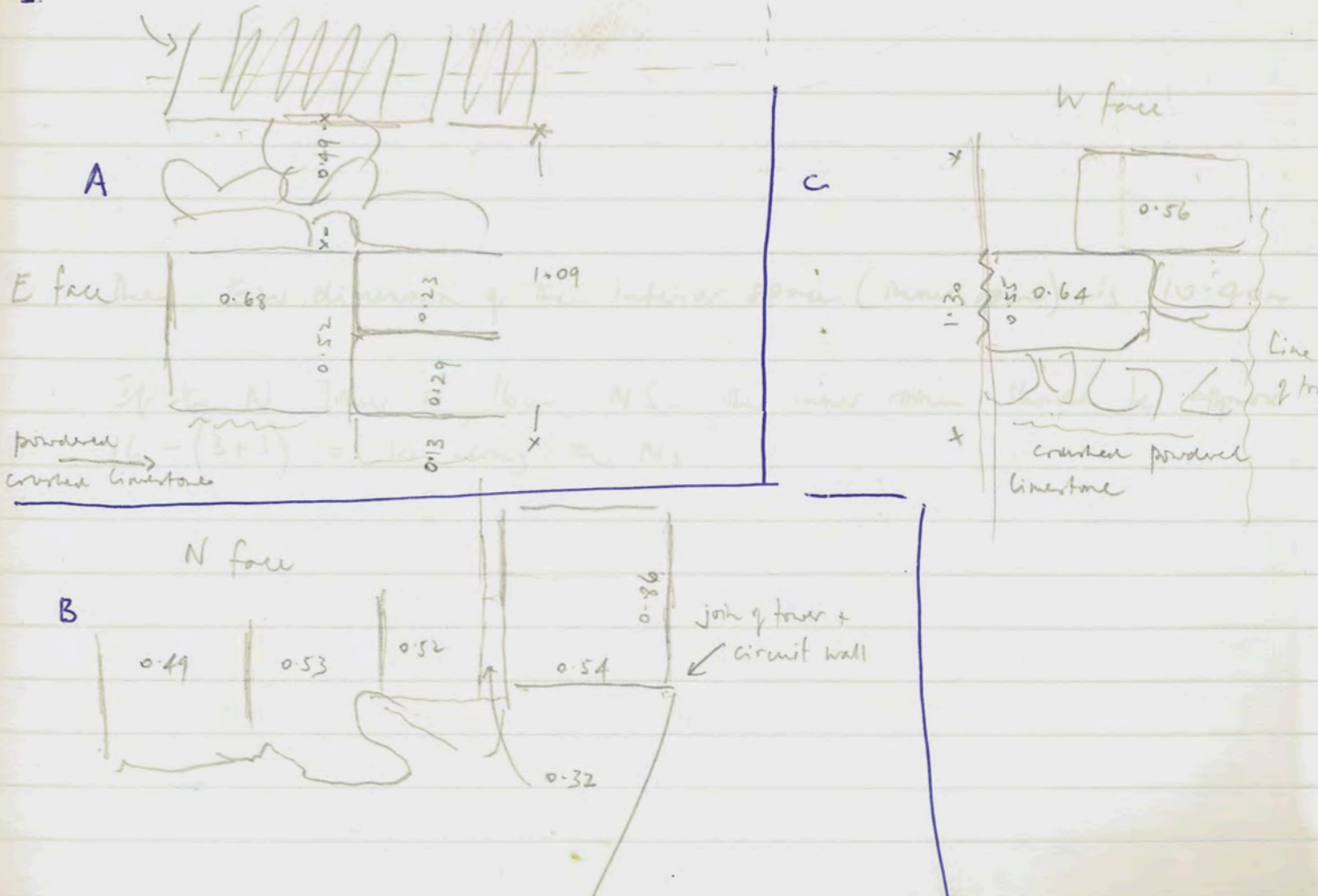
4.6.90

SMG 1 Tower

N ←



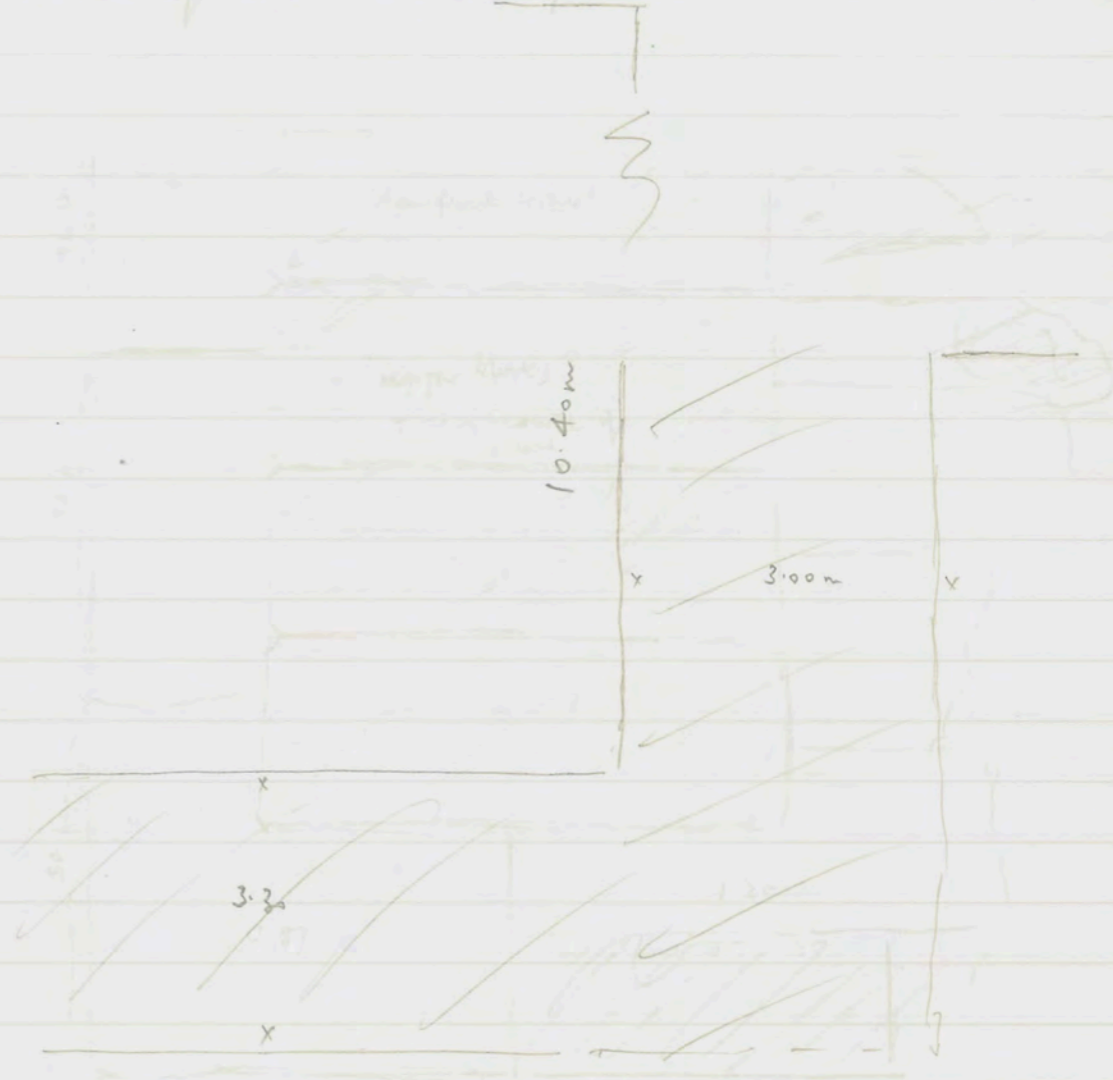
worn ashlar blocks



4.6.90

NMG N Tower

Construction of level with shaft



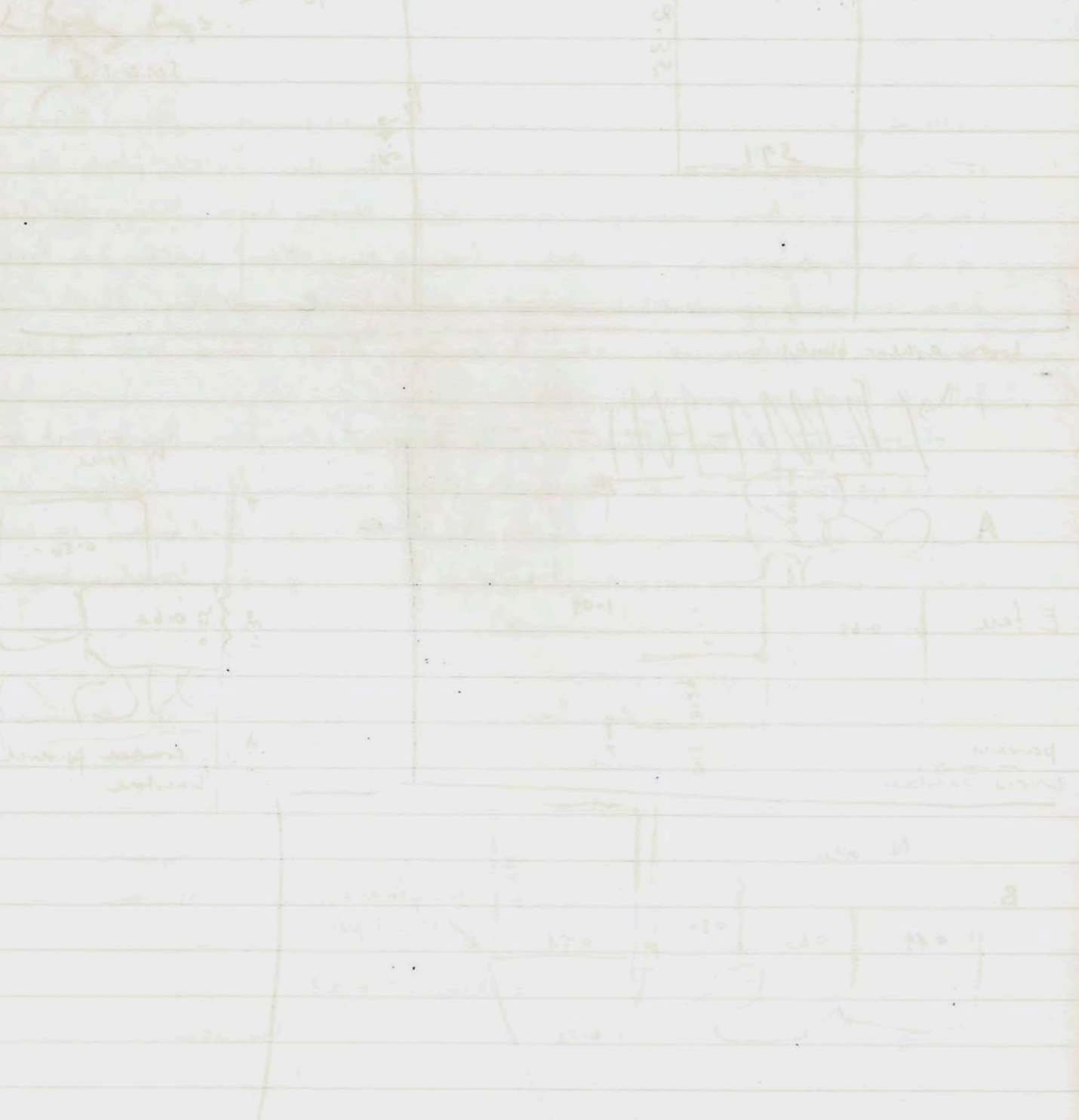
The EW dimension of the interior space (inner room) is 10.40m

If the N Tower is 16m NS the inner room should be approx  $16 - (3+3) = 10$  along the NS

JK  
4.6.90  
SUG 1. N. (A)

1.2M2

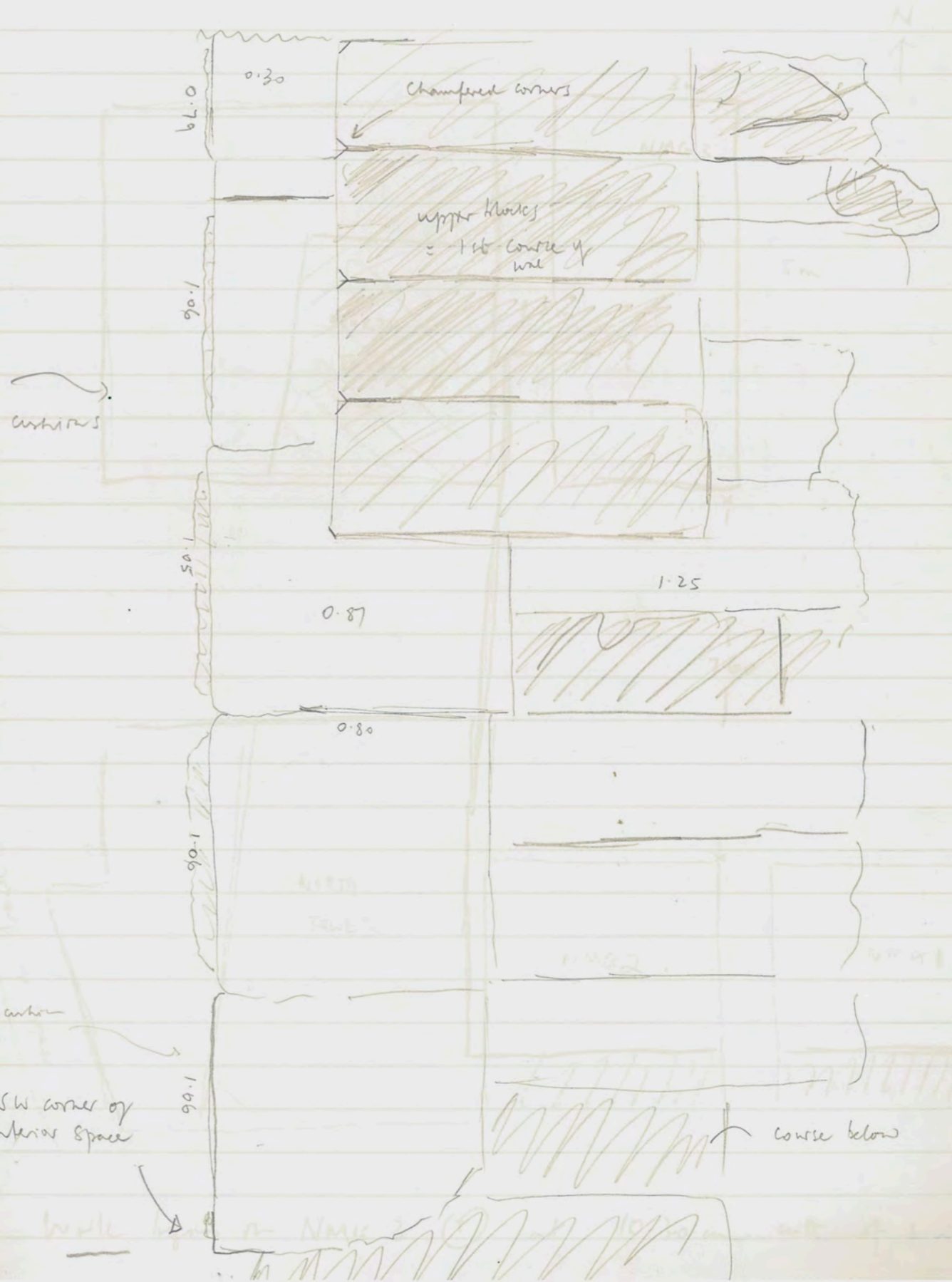
- Smallish 4x corner bay study
- 1 main bay c/w book jar
- 2 joining room front c/w jar
- 1 main bay lower level jar / WC
- 1 main bay upper level
- 2 study bays



4.6.90

NMG 2

Construction of level with shelf: 2.1m interior space

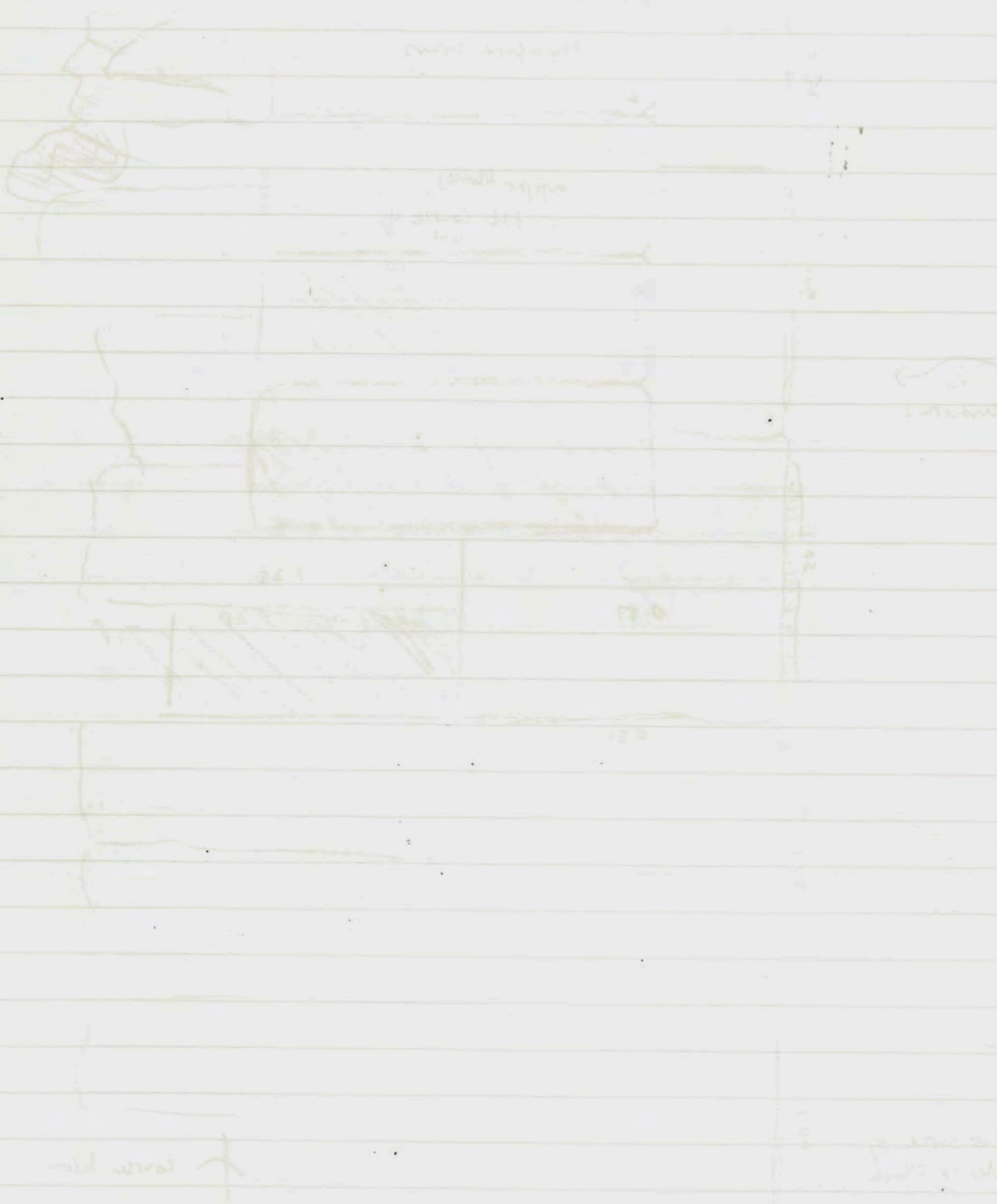


the floor dimensions of the interior space (from room) is 10.40m  
 If the 1.90m is the width of the wall then the interior space is 10.40m - 1.90m = 8.50m



of 2A

C 2MM

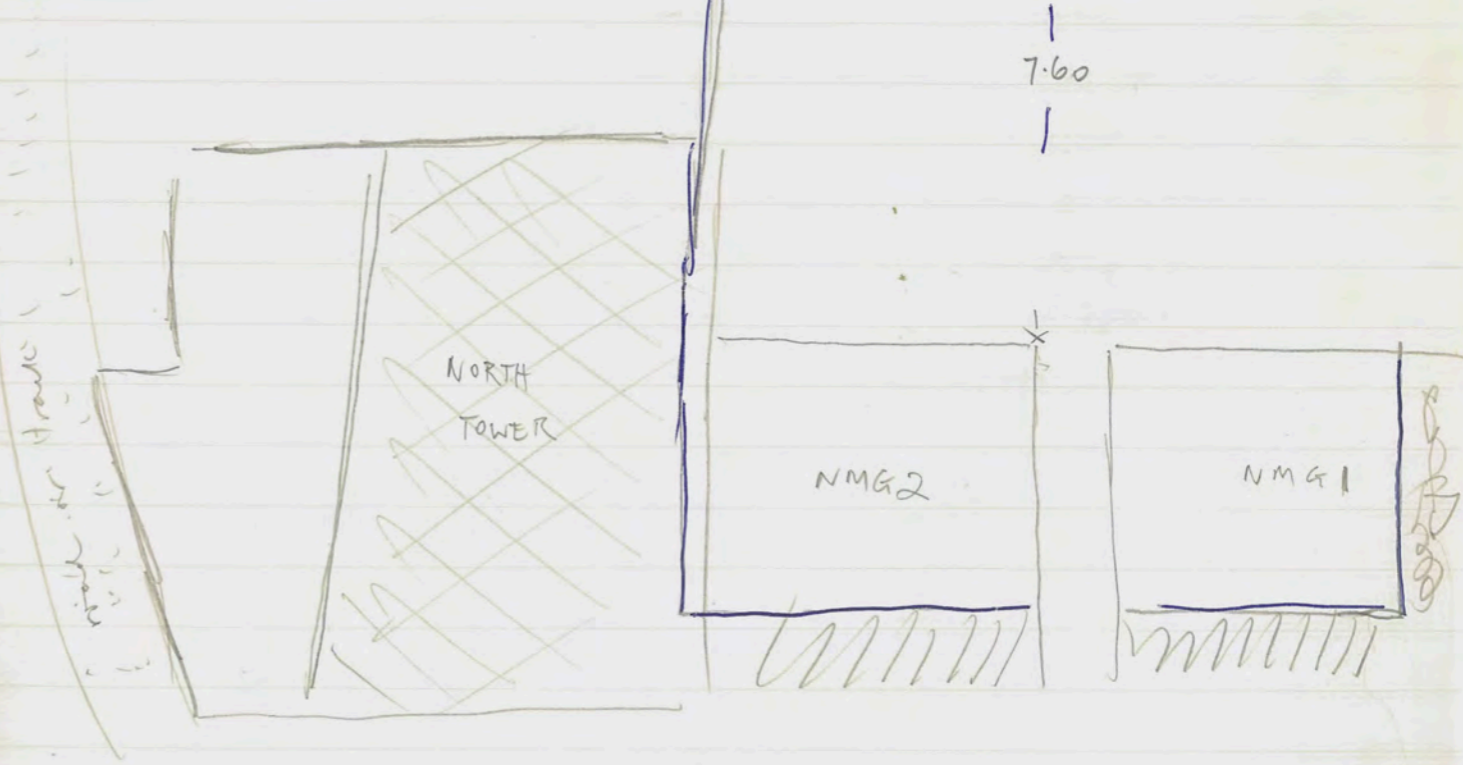
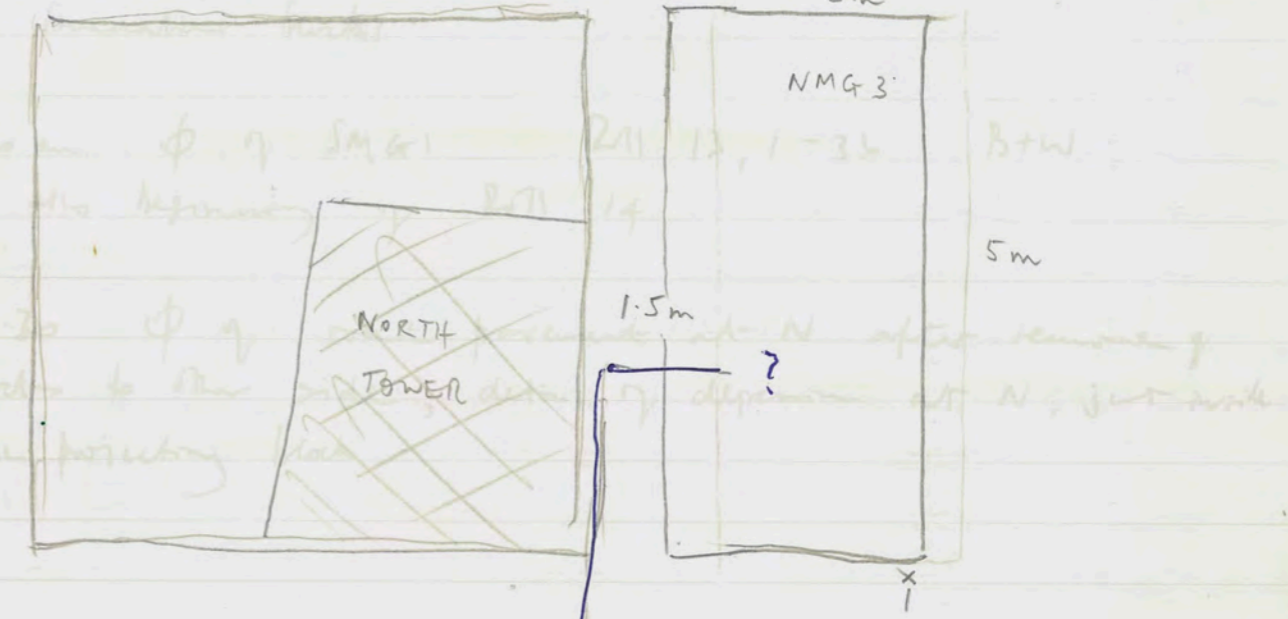


4.6.90 4690

9.30 am. R 12, -36 (B+W)  
 I measure out a trench (NMG 3) measuring 5x3m  
 in order to catch the N boundary of the interior space  
 being of the set-back from each of the walls

Also I of NMG 1 - early done except for the  
 N

11.30 am. I of NMG 1  
 12.30 I of NMG 1  
 1.5m  
 ?



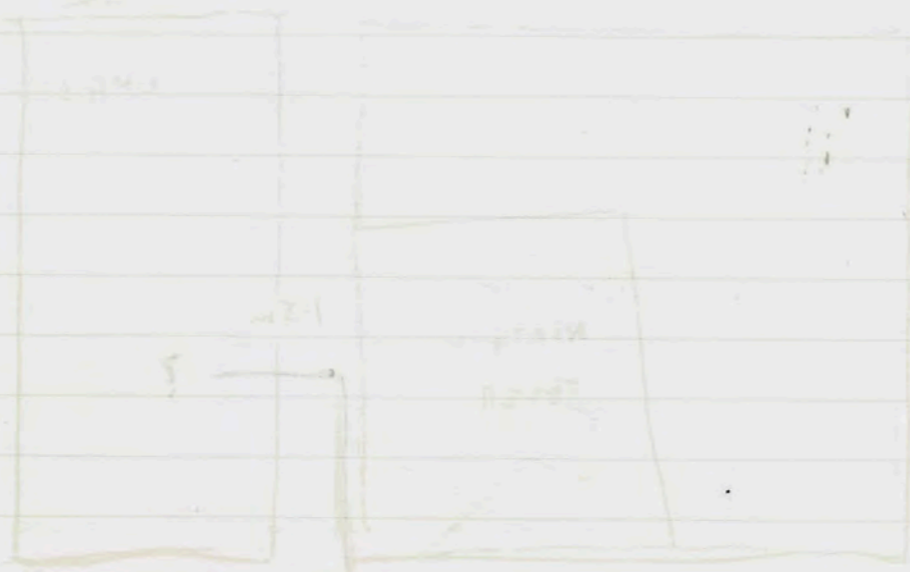
Work begins on NMG 3 (1) at 10.30 am with 4 workers

at 2 p

at 2 p

EV2 process (E 2MM) ...

N  
↑



100



at 2 p

4.6.90

10.30 am. R 12, -36 (B+W)

Φ of NMG 2 with starts from W of broad expanse. Beginning with detail of fine line marked on 'shelf' platform to guide placing of the set-back first course of the wall

Also Φ of NMG 1 recently cleaned except for the bed-rock and foundation blocks

11.30 am. Φ of SMG 1 R11 13, 1-36 B+W

Also beginning of R11 14

12.30 Φ of road pavement at N after removal of blocks to other side; detail of depression at N, just inside the projecting block

5.6.90

NMG 3 SW ①

- largest bag work ware body sheds
- 5 rim frags echinus bowls
- 9 rim frags c/w bowls/jars
- 1 rim frag fish-plate?
- 1 handle root frag.

frags tiles

- 5 base frags c/w bowls
- 8 body frags cooking ware
- 4 frags t-c lamp (very worn)

5.6.90

NMG 3 ①

- medium wt coarse-ware body sheds
- 6 base frags coarse ware bowls/jars
- 5 rim frags echinus bowls
- 3 handle / handle root frags
- 1 amphora toe frag
- 1 body frag cooking ware
- 3 rim frags c/w jars/bowls

Thursday 5 June 1990

Weather: sunny very cold + very strong wind from NW  
 Workers: North: Yannis, Yannis, Halima, Khalid, Juvana  
 Aziza, Aziza Taloum Anoua (8)  
 South: all present. (8)

NMG 3

Work continues on surface  
 It looks very much as though the whole of the trench is taken up with laid blocks of the former structure though it is possible that the N edge of the interior space is placed quite close to the S boundary of the trench.  
 The trench was measured out with reference to Jack's NW corner trench of 1989. So the two S boundaries are in alignment (or are supposed to be). It might be necessary soon to extend this trench further S.

11:20 am. in SW corner of trench, at a depth of c. 0.40 from the surface of the topmost preserved block at that point a complete Hellenistic lamp with striating and rosette on nozzle: crack in fabric. 90.603

This trench has been developing straightly at the S so a sketch is necessary on a following page.

5.6.90

SMG-1 W (1)

- a few coarse ware body sherds
- 2 base frags, c/w bowls/jars
- 1 handle frag
- 1 rim frag, eburnous bowl
- 1 rim fin plate
- 1 rim frag 'plate'

One bag

5.6.90

19

SMG-1 W

In order to locate the W boundary of the S Tower the trench SMG-1 is extended by 3 metres to the W: a total of 8 metres from the NE corner of the trench

Work begins immediately on top soil working from S to N.

Note that in SMG-1 N (the SW corner of the interior space) we have not located the 'shelf' since there is a hard floor of reddish-brown clay. This is therefore different from the hard-packed limestone floor found in the other three sections of the inner space excavated so far. The stratigraphy shows the soil with some specks of charcoal to a depth of 0.62m, then there is a narrow band of - slightly white deposit (0.10m) and above that light-brown soil again mixed with tiny stones (0.40). Above this only are the large blocks of rubble. The lowest rubble fits in a total deposit of 1.06m

At SMG-1 S there is also a deep deposit of soil which reaches higher than the preserved height of the platform.

By the end of work today the W boundary of the S Tower has been located on the N portion of the trench

5.6.90

363/2 (5) red soil  
small lot brick shreds etc. bags of kils  
1 m bag c/w jar One bag.

5.6.90

363/2 (4)

Small lot c/w brick shreds  
2 bare frag coarse ware bowls/jars  
2 handle frags  
1 m frag wottery ware  
2 body frags wottery ware  
4 File frags  
1 m frag mortarium.

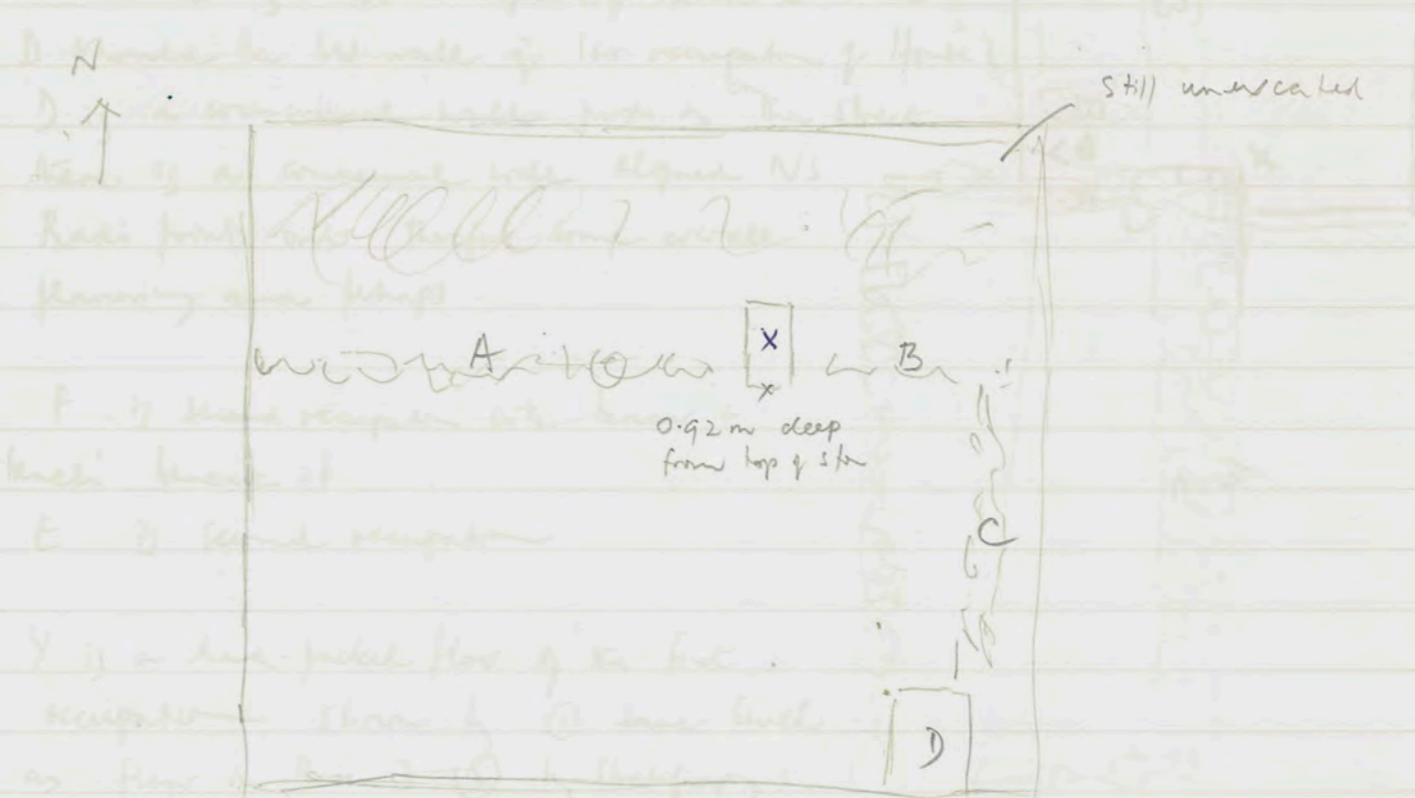
5.6.90

363/2 Drama + 5 stars 3 = (4)

Unable to visit yesterday because after two days of severe winds at the Gate, it was necessary to clean and measure and photograph.

There was apparently much rubble removed and some removed today in the W area of the trench. The soil seems to have a yellow tinge. There is a reddish deposit below (5)

It is apparent that there is an EW wall where it was suspected previously. Several courses have now been uncovered and there may be one at the E side of the trench.



The outside wall at A is not brilliantly constructed and neither is C (in comparison with some in 392/6 for example). It is just possible that B is a doorway: the stones are smaller and more random and there seems to be much of the gluing clay packed in between them.

There is another block beneath D so that is a special kind of structure or feature of the wall.

5.6.90

179/8

and Room 3 = 179/8 - 179/5

(A)

Note that the present N wall of Room 3 forms a separate corner at X and that B is not in alignment with A but lies a wall's thickness to the S. At this point wall A is 0.60; wall B measures 0.63 m. Wall A lies against Wall B. Wall B is in alignment with the stone platform C and Radi suggests that this platform is the foundation of the original N wall of Room 3 and that wall A was simply the S wall of the house to the N of House 2.

It has been clear that B continues past A.

B is 1st occupation of House 2 and D should be W wall of 1st occupation of House 2

D is a communal wall just as the street there is a communal wall aligned N/S

Radi points out therefore some overall planning and perhaps

F is second occupation with 'kanow' + 'keneli' beneath it

E is second occupation

Y is a hard-packed floor of the first occupation shown by ① same level as floor in Room 3 ② by stratigraphy:

above it is ash frag (locus 8) which comes probably from the kanow in Room 3. Above the frag is a floor of 2nd occupation [4]; this floor covers Wall E. See Radi's section



Wall D is communal to 3 houses: House 2, the house to S and the House to the N

2nd occupation: they sold space between walls D and F

about 4 metres

5.6.90

179/8

The gray soil had no bones etc in it. It is like the thick deposit in Drax's trench B1 (1988). It seems like soil but it must be wood ash, from heating fires rather than cooking fires.

Where does Room 3 end: floor level and composition, especially the latter are the same in 179/8 as in Room 3

Therefore Wall D would rather be end of Room 3 + W boundary of House 2. The wall E, Radi suggests, could be simply to protect the tanour. But why it is in the corner of a (the) room like elsewhere is not clear.

Wall E does however seem to rest on the floor as described.

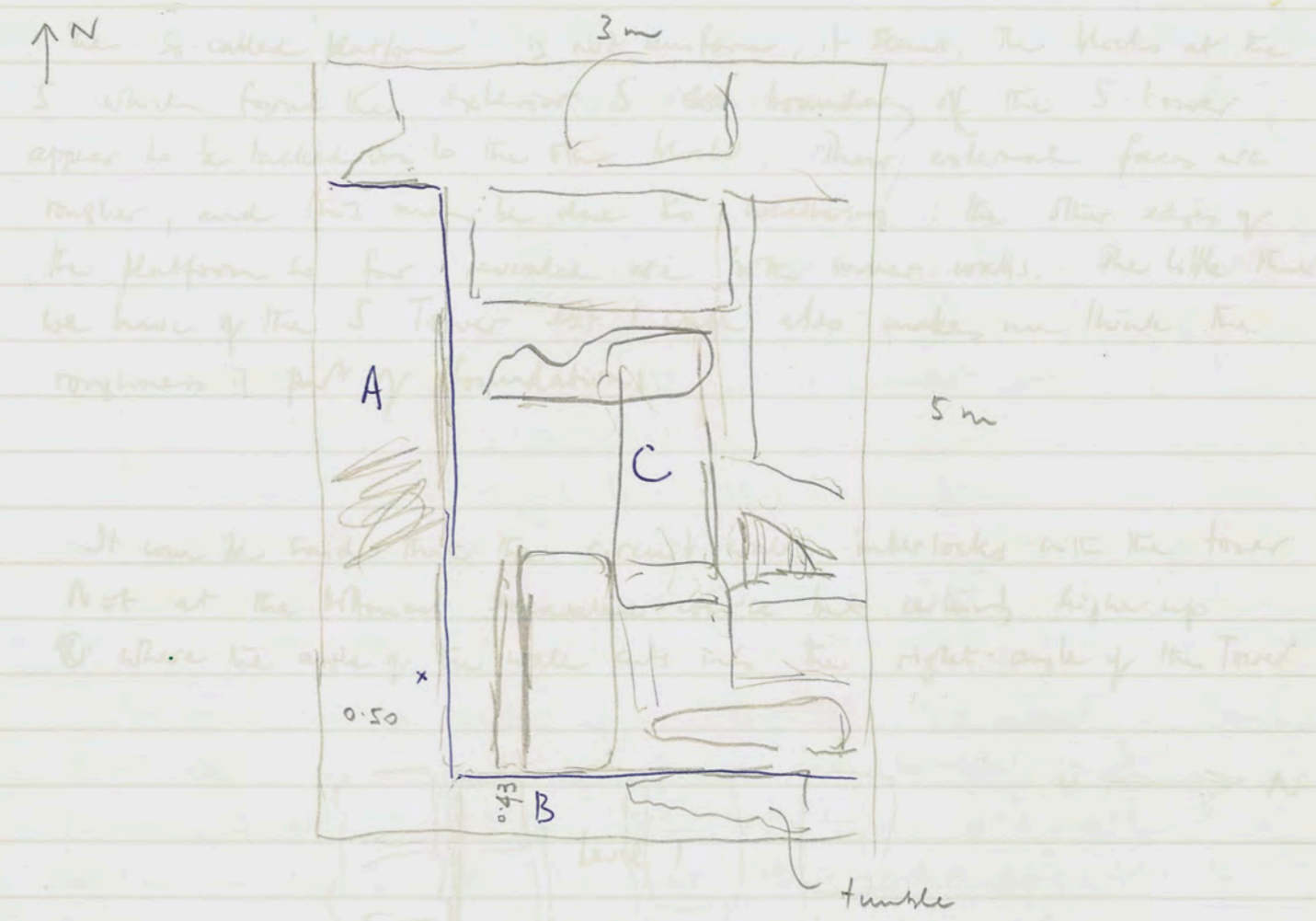
C is filled with the debris of the stone of house 2 and decayed  
but like A and B seem not to have blocks in them, at least perhaps a block deep in W of A and D. Area of heavy of soil and also heavy of filling especially at the S of B (a feature in the A cable for shaded, but not seen in the site). The complete house has been excavated - 90.603

I had thought it possible that B - the N part of the interior space, but A is a passage

12.45  $\phi$  of north, some preliminary reading  
R 14; -25

5.6.90

SM NMG 3



C is solid-built though the surface of the stones is much crumbled and decayed  
 but like A and B seem not to have blocks in them; we are perhaps a block deep in like A and B. There is plenty of soil and also plenty of pits, especially at the S of B (a portion in the A centre (as shaded, has not been excavated yet); the complete lamp was found at x. 90.603

I had thought it possible that B is the N part of the interior space, but A is a passage

1245  $\phi$  of newly swept pavement of roadway  
 R 14, -23

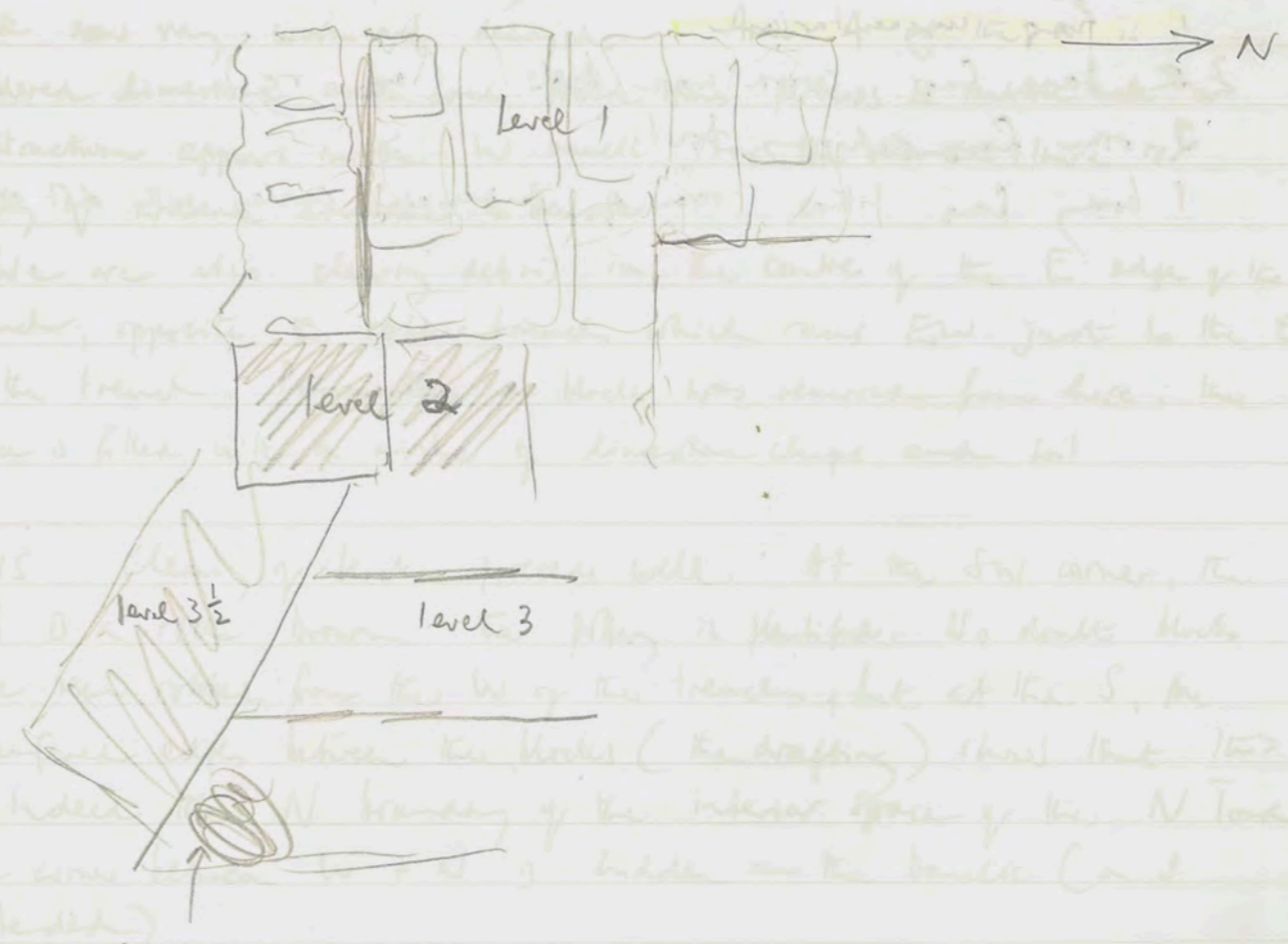


Wednesday 6.5.6.90

SMQ 1 (1988-1990)

The so-called 'platform' is not uniform, it seems. The blocks at the S which form the exterior S boundary of the S tower appear to be tacked on to the other blocks. Their external faces are rougher, and this may be due to weathering: the other edges of the platform so far revealed are both inner walls. The little that we have of the S Tower ext. S wall also makes me think the roughness is part of foundations.

It can be said that the circuit wall interlocks with the tower Not at the lowest excavated course but certainly higher up where the angle of the wall cuts into the right-angle of the tower



flat patch of limestone mortar



1500.0P

1500.0P

6.6.90

NMG 3

①/②

1 largeish frag coarse ware body sherds

3 base frags coarse ware bowl

4 rim frags c/w jars

5 body frags looking ware

1 handle frag

1 rim frag echinus bowl.

6.6.90

NMG 3

①/②

bag

medium-large wt coarse ware body sherds

4 rim frags c/w bowls jars

1 frag unguentarian

3 base frags coarse ware bowls (one rg)

2 rim frags echinus bowl.

1 body frag fillos row of impressed circles with dent at centre

Wednesday 6 June 1990

Weather: sunny, calm.

Workers NW: Yannis, Yannis, Halima, Khalid, Jumaa, Amouna  
Aziza, Aziza Saloum (8)

South Hussein etc. (8)

NMG 3 Work continues at N of A and W of B

At W of B (that is the corner of area A and area B) the soil is soft and brown. Pottery emerges immediately, including a fragment of a lamp (striations)

The area marked yesterday as unexcavated is actually a limestone block now very worn and decayed. Area A at the N is powdered limestone and some field stones perhaps a rubble wall or construction appears on the W bank. For the moment there is plenty of crushed limestone to remove.

We are also clearing debris in the centre of the E edge of the trench, opposite the robber trench which runs EW just to the E of the trench. Presumably a block was removed from here: the space is filled with a mixture of limestone chips and soil

12.15 Clearing of blocks proceeds well. At the SW corner, the soil is a red brown. The pottery is plentiful. No doubt blocks have been robbed from the W of the trench, but at the S, the chamfered edges between the blocks (the drafting) shows that it is indeed the N boundary of the interior space of the N Tower. The corner between W + N is hidden on the bank (as I intended)

6.6.90

SMG 1 W (2)

small lt cork ware body sherds

1 box frag c/w bowl / jar

2 rim frags echinus bowls

1 rim frag mortarium

4 body frags cooking ware

1 rim frag cooking ware

1 rim frag c/w jar with black paint

1 rim frag oval rimmed one rim

1 handle frag

2 rim frags straight-rimmed bowls

of body frags

303/2

6.6.90

2p

SMG 1 W

The outer face of the tower becomes clearer at the N of the trench but has not yet been located to the S. The stones of the outer edge are in very poor condition and there seems to be a gap, at least at the upper preserved level, between this edge and the edge of the so-called 'platform'

Found W wall of kitchen house on platform. At the ground doorway, the deposit is 1.2m down.

There is clearly also a wall along the E bank. I marked 157 wall C in a previous sketch.

10:00 am  $\Phi$  of zone of SMG 1 and R 15  
to  $\Phi$  of cleared zone for car stopping point of site

57 x 27 x 55 deep of trench  
St. number 057 area 207 long and the width of  
handle of 0.93

Refining of RM 16

10:40  $\Phi$  of SMG 2 zone of tower & court wall  
problems with all on ... take again on R 17

6.6.90 W 1.30 PM

Small W (2)  
The surface of the red soil is very uneven with  
irregularities due to the presence of stones and  
other debris. The soil is very hard and it is  
difficult to dig. The wall continues down  
at the E. It still looks possible that there is a  
blocked up doorway at the E.  
Towards W wall is 1.46 m high as presently uncovered. At the  
presumed doorway, the deposit is 1.20 m down.  
There is clearly also a wall along the E bank. I marked  
this wall C in a previous sketch.

6.6.90

363/2

363/2

Work began yesterday in the red soil (5) and continues  
today. Within the red soil there is a heavy admixture of rubble.  
7.30am There is a reasonable amount of bone from the 1st stratum  
and just a little pottery. The wall continues down.

It still looks possible that there is a blocked up doorway  
at the E.

Towards W wall is 1.46 m high as presently uncovered. At the  
presumed doorway, the deposit is 1.20 m down.

There is clearly also a wall along the E bank. I marked  
this wall C in a previous sketch.

10.00 am  $\Phi$  of grave of Judith and R 15  
+  $\Phi$  of cleaned grave near car stopping point of Jemel  
fence + vegetation

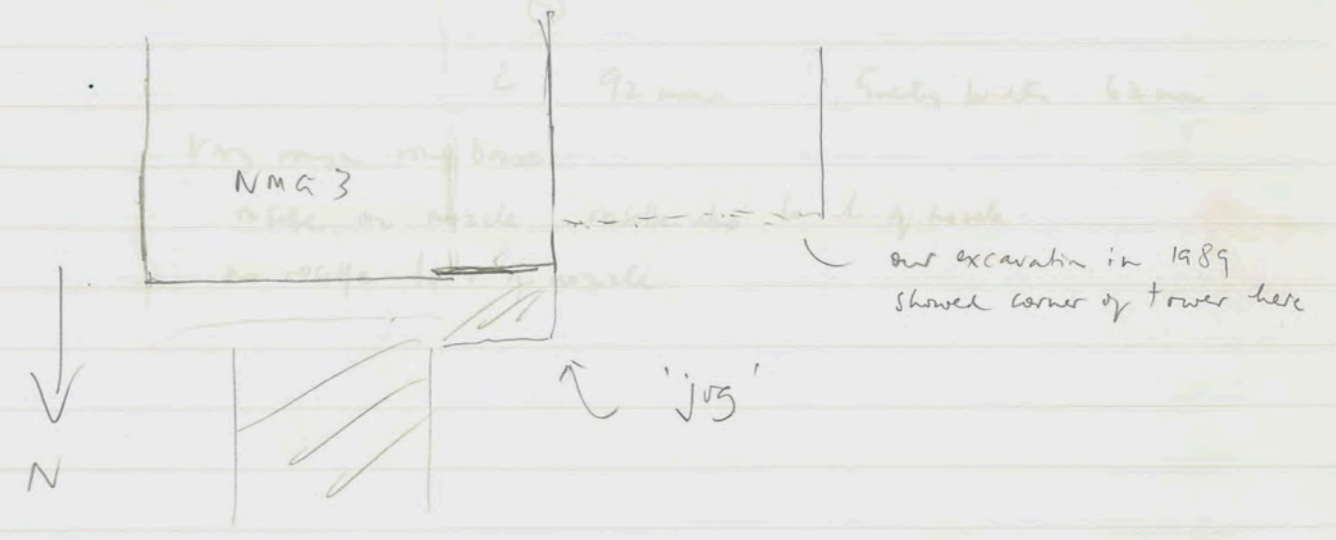
57 x 207 x 93 deep. of bedrock  
It measures 0.57 wide 2.07 long and the cut in  
bedrock is 0.93

Refining of R 16

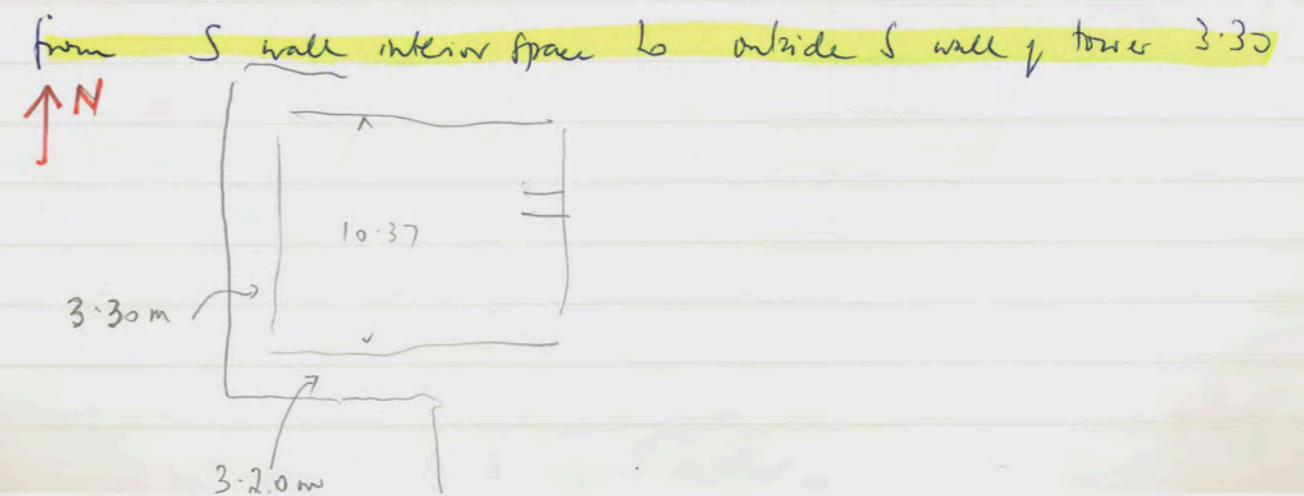
10.45  $\Phi$  of SMG 2 join of Tower + circuit wall  
problems with wall on  $\therefore$  take scan on R 17

NMG 3

Although some blocks have been rotted, most of the area of the trench is filled with ashlar blocks of quite extraordinary size. This means that the blocks across the trench extend further N than the previously supposed NW corner + edge of the N tower as if turned towards the circuit wall. Since there is what seems to be a slight jog before the wall hits the tower it is still possible that the previous theory can hold. But further work and consideration is probably needed here in a future year: since also we do not yet know the NE corner of the tower.



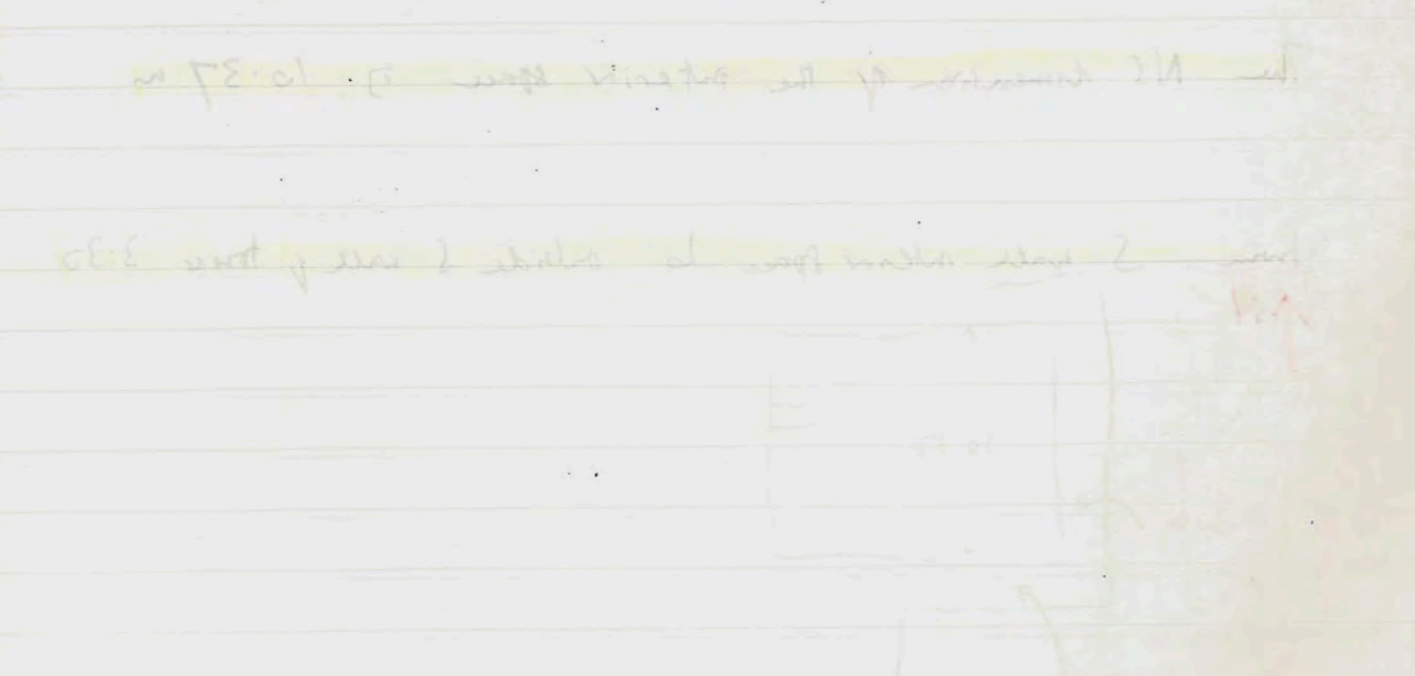
The NS dimension of the interior space is 10.37 m



op. d. d

E-200

Faint handwritten notes, possibly describing archaeological findings or survey data. The text is mostly illegible due to fading and bleed-through from the reverse side of the page.



Thursday 7 June 1970

6.6.90

PM  
 NMG 3 R 18, 19

Φ cooking ware Acropolis AK T15 14.5.90

NMG 3 P4 0.19 diam. mark: 0.13

one handled round bellomed jar. Ston bank 90.068

H. 0.29 W 0.25

- Unguentarium H 245 mm D lip 30 mm  
 Judite's grave D foot 25 mm  
 greatest W body 63 mm

- lamp NMG 3 5.6.90 90.603

L. 92 mm. Greatest width 62 mm

Very rough ring base.

rosette on nozzle. rosette also to l. of nozzle

no rosette to r of nozzle

7.6.90

NMG 3 S (2)

largest lot coarse ware body sherds

2 bar frags coarse ware bowls

1 handle frag

1 strap handle frag

1 rim frag brownish gray ware bowl

1 body frag cooking ware

1 rim frag cooking ware

1 body frag brownish gray ware

2 rim frag c/w jar

1 flaring rim frag plate or shallow bowl

1 handle frag c/w amphora no stamp

body sherds include a number of large frags of c/w amphora

∴ it is predominantly orange-red colour of fabric

1 tile frag

Thursday 7 June 1990

7.6.90

Weather sunny, stiff breeze from NW

Workers North 8 South 8

NMG 3

Work continues on stratum (2) a fine light-brown soil to S of EW wall: that is in area B. A block of timber has been removed. It will be hard to tell the difference between the

At the moment we are approx 1.5m below the top of the second well-preserved course and it will not proceed further than that

The top of the wall is now 1.5m below the top of the second well-preserved course and it will not proceed further than that

Excavation 179/3

179/3 R24 - 27

7.6.90

SMG 1 W (2)

a few coarse-ware body sherds

1 rim frag cooking ware

1 handle frag

1 rim frag c/w bowl/jar

One Day

7.6.90

263/2 (5)

many large fragments of tile

1 base frag c/w bowl

1 frag unguentarium base

1 body frag brown + red paint

1 rim frag


One Day

7.6.90

SMG 1 W (2)

Work continues to try to obtain a good view of the wall at the W. The wall seems to continue past the S wall of the tower. The state of preservation of the blocks at the depth to which we can work today is so poor that it looks as though it will be hard to tell the difference between tower blocks and any further additions to the S.

7.30 am Acropolis  $\phi$  new lion spout etc. beginning with more on earlier discovered stone now seen to be a mace in comp with new lion. Other architectural blocks including a small frag of fluting of door or Corinthian.

sky  end of R21 19.

8.00 today R21 19, R21 20  
dromos etc of EMG 5

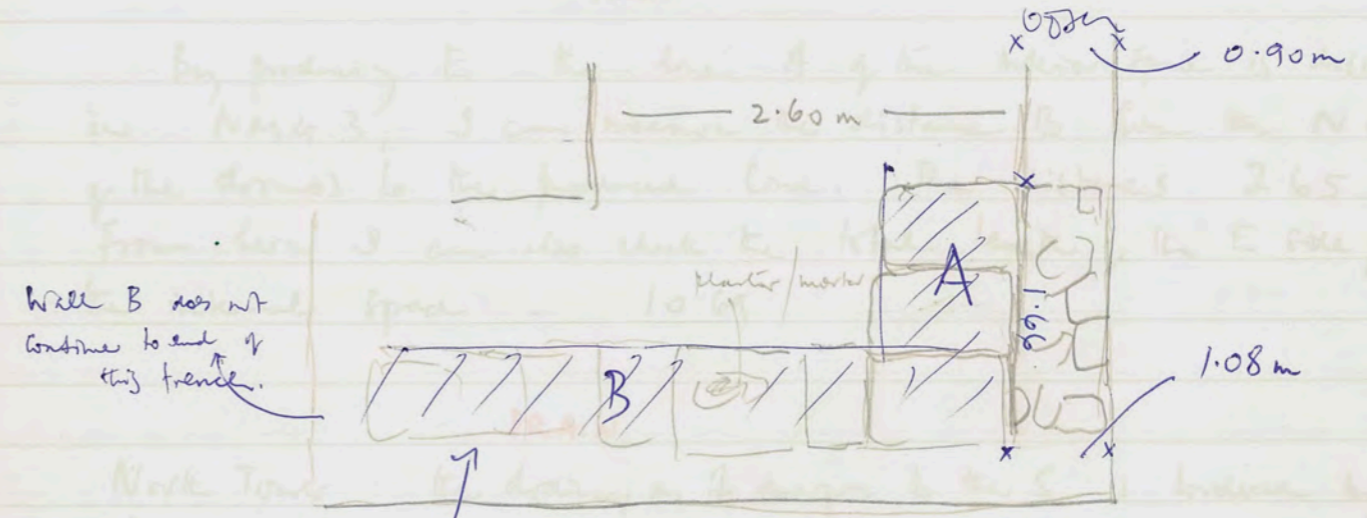
8.45  $\phi$  179/8, R20, -27



Saturday 9 June 1990

North Tower  
SM 1

By the end of work on Thursday last we had exposed the wall of the S tower together with its SW corner. There are rough blocks between this corner and the S boundary of the trench, some of which at least should be part of the wall that was observed at the bank of the SM 1 before the extension was made.



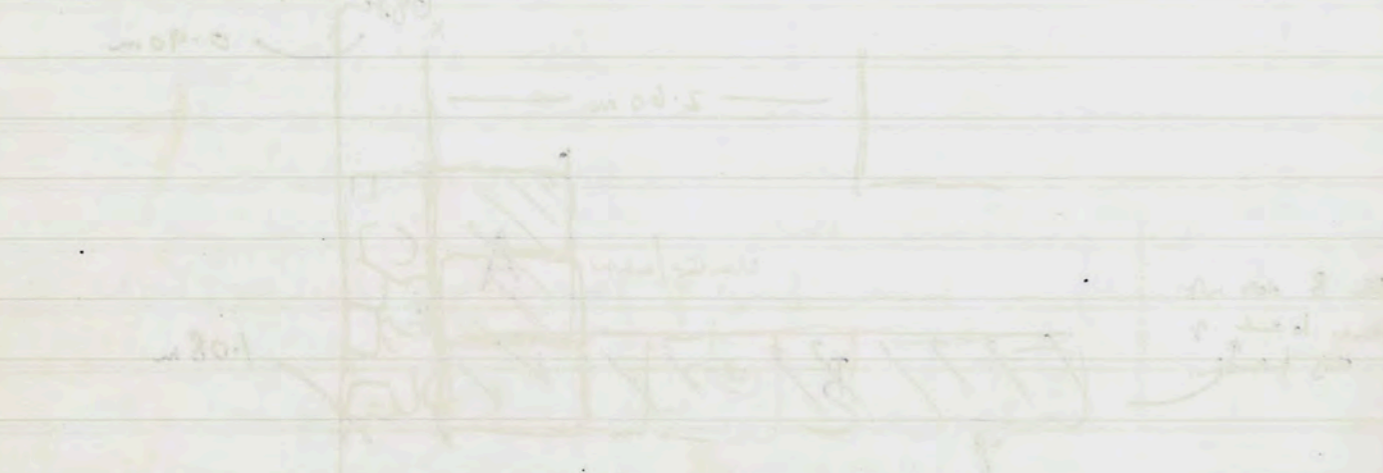
Wall B does not continue to end of this trench.

excavated to a depth of 0.84m.

for measurement of tower see end of Book 2 (1950)  
The facade as far as can be judged is made of small blocks of ashlar in a system that shows they are simply attached, as it were, to the structure since no block in this trench of either Wall A or Wall B interlocks with the blocks of what I have described as the pavement. It is the S Tower's equivalent of the decorative facade of the N Tower

GPAI ...

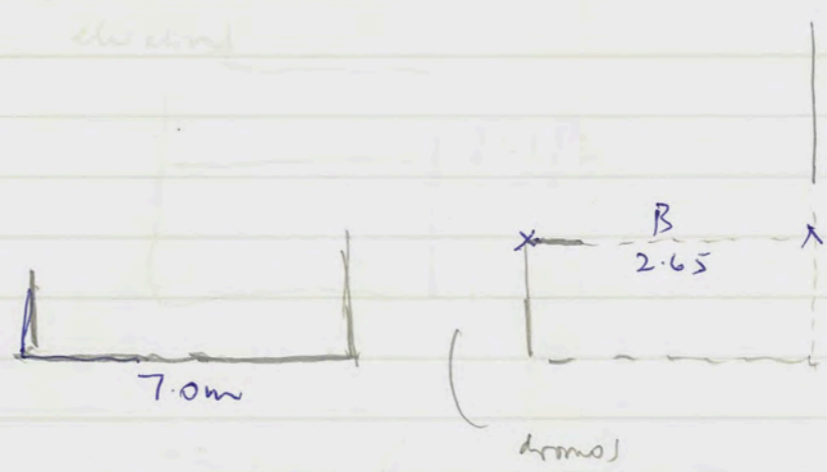
Faint handwritten notes on the left page.



Faint handwritten notes on the left page.

9. 6. 90

North Tower



By producing E the line A of the interior space is discovered in NM 3, I can measure the distance B from the N corner of the drain to the produced line. The distance is 2.65. From here I can also check the total length of the E side of the internal space - 10.69

DRAIN

North Tower: the drain, as it emerges to the S is bordered by blocks which, where they are preserved on the E, have a reddish-brown tinge: there is a long block followed by 2 short blocks a distance of 2.14 from where the drain is broken. Total length of drain should be 3.80m.

- 1. datum 1905
2. New wall Stone block 364/7 - 392/9
3. 346
4. 391/3 N tower
5. 365/2

- 8. 333/4 drain cover
9. 364/3 floor level
10. 364/2 other step

of 1.9

Stoa



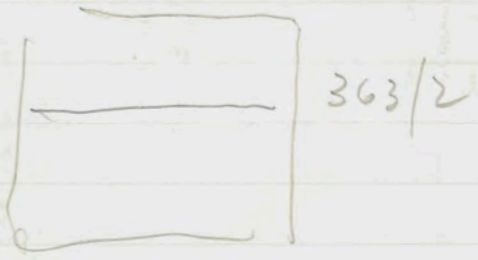
Handwritten notes on page 33, including the word 'drain' written in red ink. The text is mostly illegible due to bleed-through from the reverse side of the page.

2.6.90

Stoa

- 1. datum 1905
- ~ near wall Stoa bank
- 364/7 - 392/9

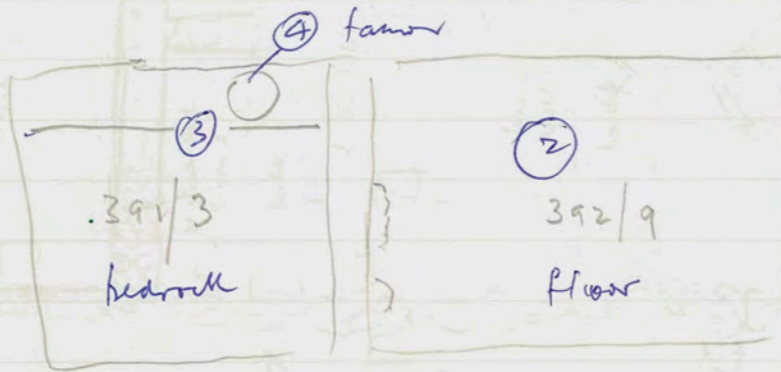
measured



- 2 3460

- 4 391/3 N tamar

- 5. 363/2 excavated depth



- 6. 333/7 drain

- 7 333/7 prestund upper floor

- 8 333/4 drain cover

- 9. 333/4 drain exit to Cistern

- 10 333/4 cistern cap etc N

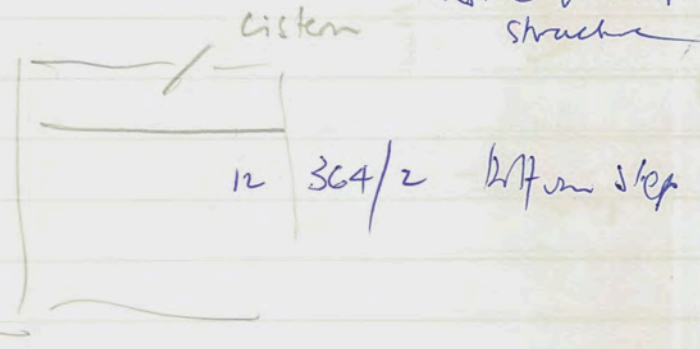
- 11. 364/2 flow level inside quadratula structure

333/4 - 7

floor

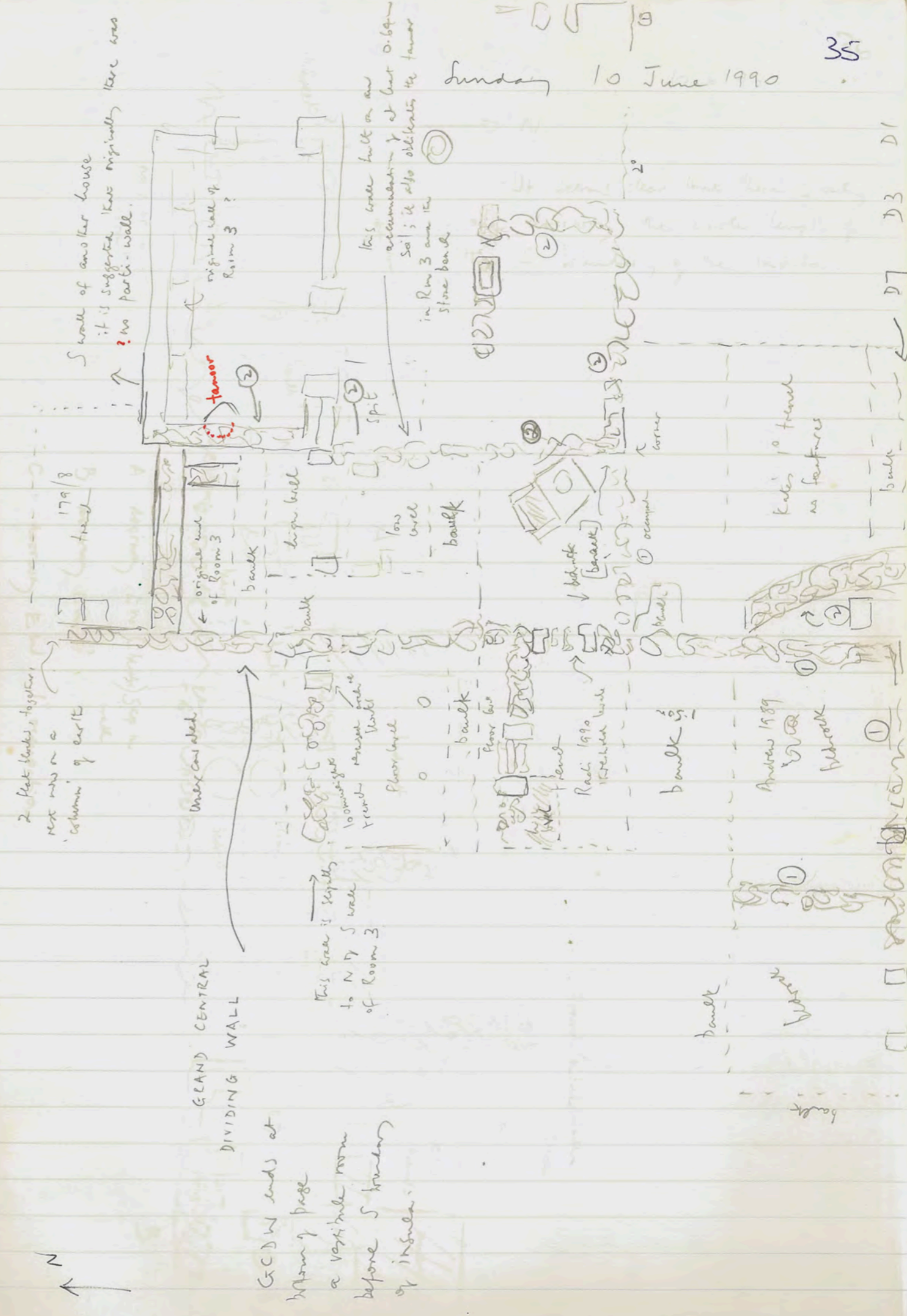
drain

drain



*[Faint handwritten notes, likely bleed-through from the reverse side of the page]*

Sunday 10 June 1990

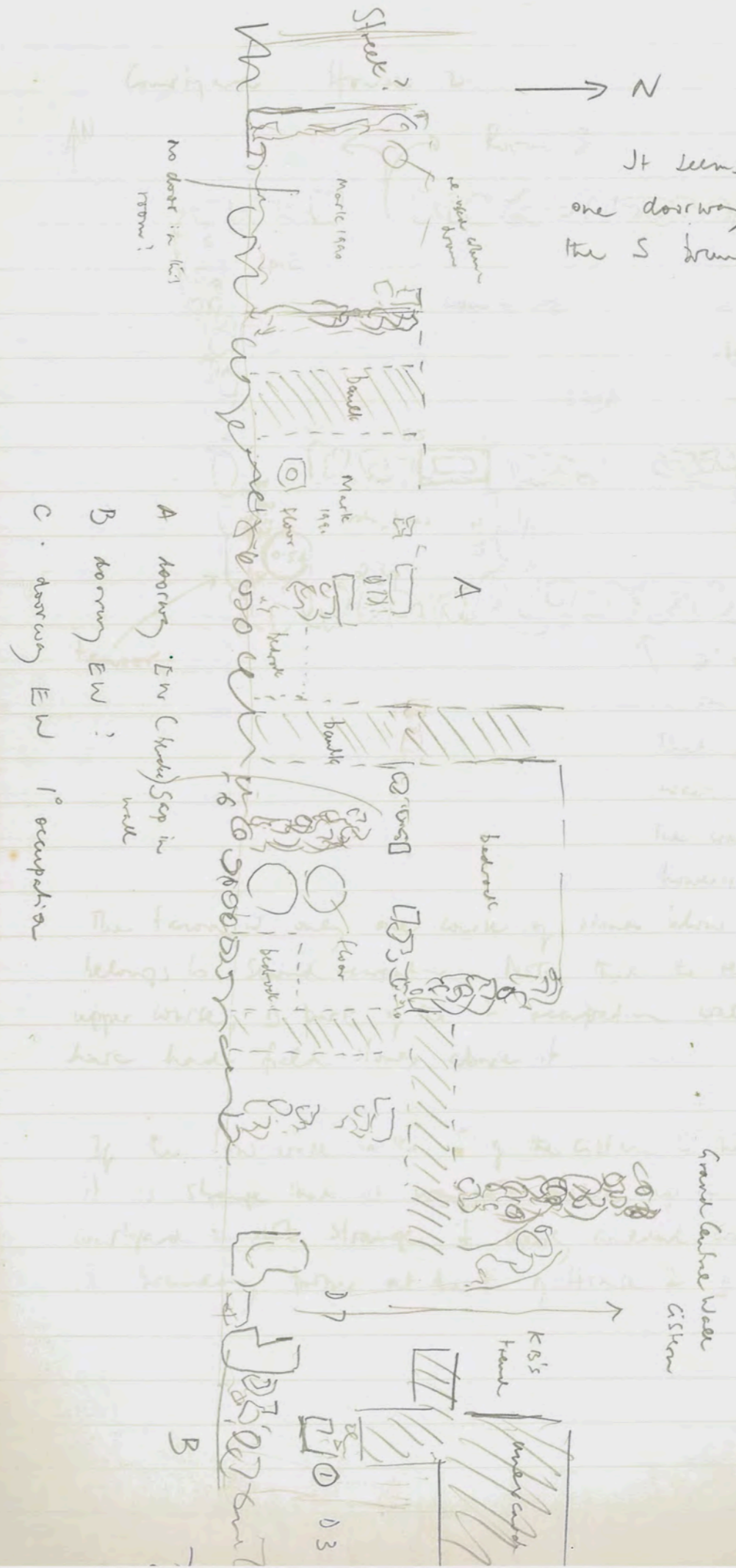


*[Vertical handwritten notes on the right margin]*

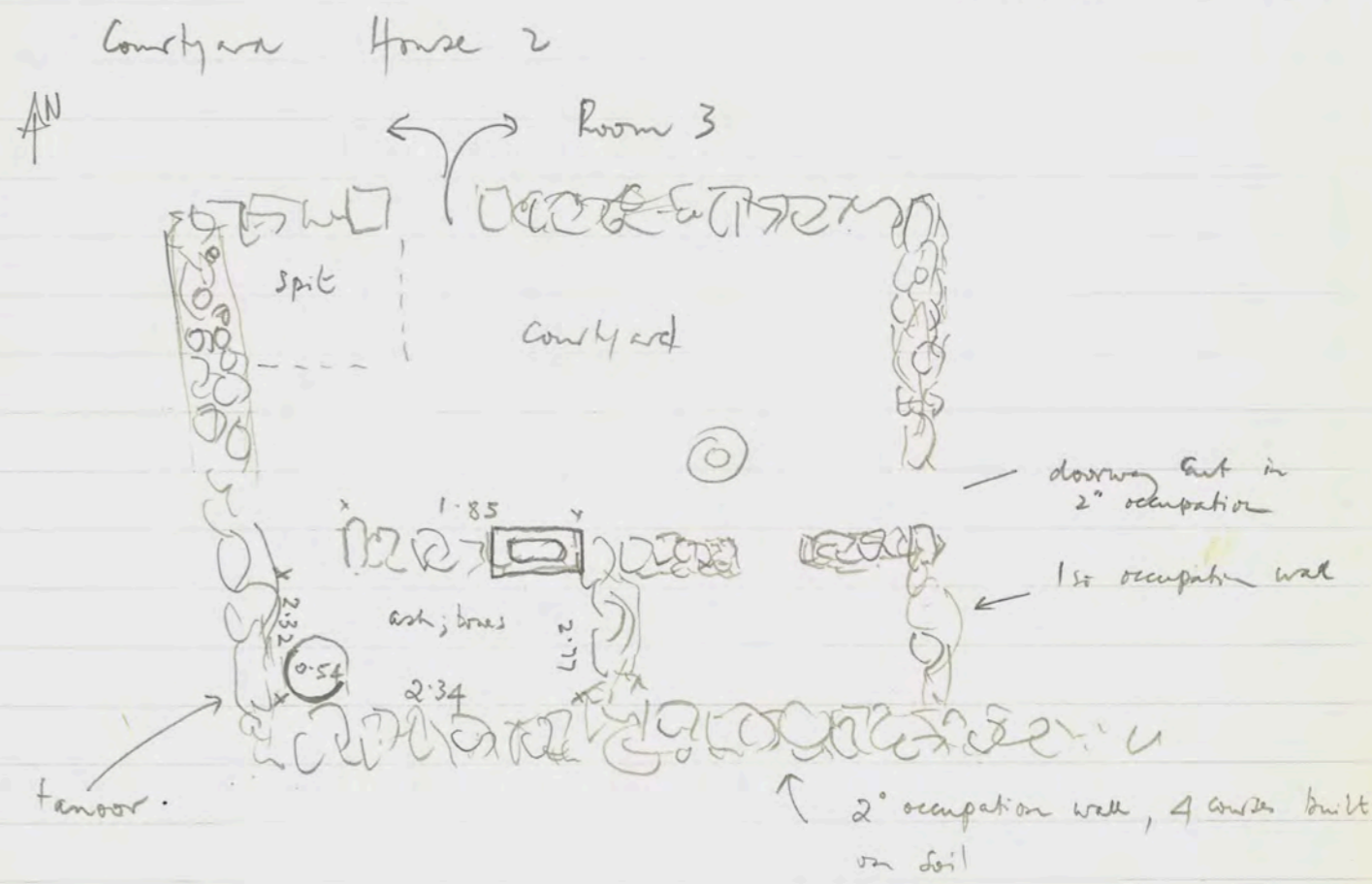
10.6.90



It seems clear that there is only one doorway the whole length of the S boundary of the indula.



- A doorways EW (K&S) Sep in wall
- B doorway EW
- C doorways EW 1° occupation



That is, we do not know what is west S boundary of House 2. The wall to E of the above is however built on bedrock.

The fenoor is only one course of stones below the surface: it clearly belongs to second occupation. Note that the rectangular bowl, now the upper course, is part of the 2<sup>o</sup> occupation wall construction and would have had field stones above it.

If the low wall to the S of the cistern is the original wall of House 2 it is strange that it was not picked up in the spit of SE corner of courtyard: not strange if clearly would continue that far since the S boundary proper at the E of House 2 is a later further S.

Trenches Main Gate 1990

South:

EMG 3 : NE corner South Tower + Masonry. A

EMG 4 SE corner South Tower + S wall of S. Tower  
SE corner : interior space - 'shelf'

SMG 2 join of South Tower and <sup>inner face of</sup> circuit wall

SMG 1 (1988) join of S. Tower and outer face circuit  
SW corner of interior space (no shelf)

North NMG 1 SE corner interior space  
foundations, shelf + drain

EMG 5 entrance to interior space

NMG 2 SW corner interior space.

NMG 3

Needs

2 tapes.

✓ - drawings (plans) and photography of drawings in EMG 5

✓ - drawings, measure ~ NMG 1 +  $\phi$

- drawings of unexcavated parts of gateway.

✓ - drawings + photography of SMG 2 (join of tower + circuit wall)

- B+W of all these

- plans of NMG 1 NMG 2 EMG 5

EMG 4

We have excavated 25m from DI corner N \*

✓ - measure dimension of interior space of S Tower 10.50m

✓ - measure width of circuit wall 2.80m  
at join with S Tower.

✓ - Do measure streets and make plans

- Corner NW of South Tower by producing the lines ✓

Interval S 35.45m

20.70m from W corner to W edge of central wall  
21.10 to this side of wall (at a fence)

The outer wall does not go completely to W

Remove dump tracks on S.

NS street width at corner of DI = 6.50m

find the holes to E shows indicate street