

MAIN GATE

Book 2

13 May - '90

✓ Φ (1990)



coin p. 33

missing coin p. 3

Stamped handle p. 3a (90.314)

A4 NOTE BOOK

No. 595

MG BOOK 2

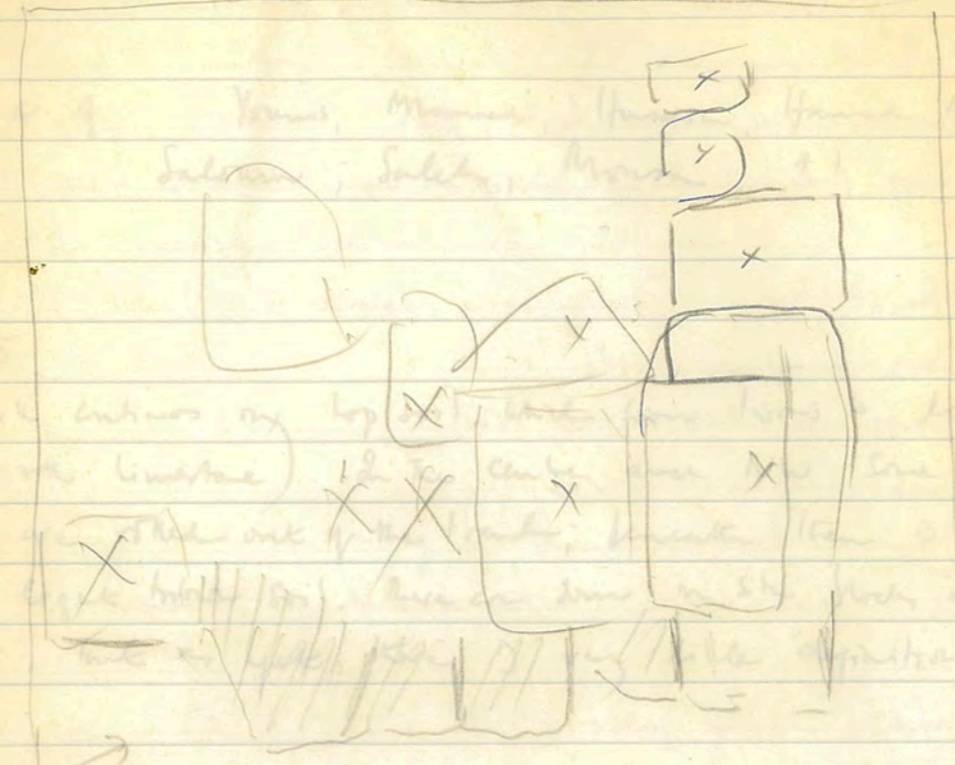
P. J. CONNOR
JEBEL KHALID 1990



Sunday 13 May 1990

EM 4 4

Plan



Seems to be a great deal of soil in this area

designated
EM 4 5
on 14.5.90

x are rocks exposed above surface before excavation began
 the shaded areas are the ragged edge of stones. To the S there are
 no stones visible now, so I suspect that is the edge of the tower; but
 will have to wait for more soil to be removed before any
 certainty can be reached

At the E the line there too is ragged. We are still working
 through top soil and uncovering rubble

Monday 14 May 1990

Weather : overcast, sunny at times, slight breeze

Workers

EMG 5 : Younis, Halima, Jumana, Amour, Opa,
Aziza, Aziza Saloum, Khalid (8)

EMG 4 : Younis, Mamed, Hussein, Hamad Aisa, Hamad
Saloum, Saleh, Mousa + 1 (8)

EMG 5

Work continues on top soil which soon turns to light brown (has
broken into limestone). In the centre area NW some large tumbled
blocks are rolled out of the trench; beneath them is a fair depth
of the light brown soil. There are some in situ blocks near the SE
corner, but as yet there is very little definition of structure.

14.5.90

EMG 5 ①

small wt c/w body shards

1.0m frag c/w bowl

1 m frag with groove interior.

4 1/2 m frags c/w jars

1 tile frag.

14.5.90

14.5.90
EMG 4 S (2)

large wt crack ware body sherds

- 7 base frag crack ware bowls/jars
- 1 base frag hard fired plate upper: blackish w reddening
underside: brown (hard-fired)
- 2 joining frags brown, hard fired, plate
- 6 rim frags echinus bowls
- 3 rim frags w/ched rim bowls
- body frags cooking ware
- 2 frags of a tawoor (!)
- body frags semi-coarse with pebbles
- 2 pebbles
- 7 rim frags c/w jars
- 3 rim frags mortaria various
- 3 handle frags (one skew whiff)
- 2 rim frags flaring rim bowls
- 1 rim frag gray ware bowl
- 1 c/w body frag with pierced hole

* 1 frag stamped amphora handle INV * 90.374

- 2 joining frags iron nail INV
- 1 worn frag figurine or lamp INV

14.5.90 EMG 4 (1) small wt c/w body sherds

- 1 base frag c/w jar
- 2 rim frags echinus bowls
- 6 rim frags c/w jars/bowls
- 2 rim frags w/ched rim bowls
- 1 figurine frag INV

EMG 4 at South Tower

Work continues with some enthusiasm when tumbled blocks require removing at mid E bank and in NW corner

At the S boundary of trench, soil continues to be evident; but the line of the wall is still very ragged as observed yesterday except that at the W (the edge of a block is appearing) the soil in this area is not so mixed with limestone.

Will call this area S (2) there is a fair amount of pottery

inv 90.217 but not recorded

9.00 am. a portion of a bronze coin from (1) near * E boundary of trench.

in EMG S (2) after breakfast, good sharp blocks are visible at the W and a black stratum appears; this is left untouched for the time being whilst (2) (light brown soil) is removed from further E in the trench.

Towards end of work still a jumble of tumbled blocks in NW corner of trench

At the S, the wall is becoming clearer and appears to be, like the sole in EMG 3, also a sole comprising neat ashlar blocks with drafted edges. There are worn blocks jutting out over them to the S. Is this tumble? or intentional? At the W foot of the

2nd top sole bank the soil is quite dark. A full centimetre of pottery has been recovered from this S section (a narrow section 0.88 m from sole wall to S wall of trench at the W end

At the W above the sole is stone is very decayed & crumbly

15.5.90

EMG 5 (2)

- Smallish lot c/w brick frags
- 2 base frags c/w bricks/jars
- 1 'base frag' rounded base jar
- 2 rim frags c/w jar
- 3 rim frags mortar (inc. 2 joining)
- 3 rim frags echinus brds.

1 brick frag r/s

1 handle frag

2 tile frags

* 1 small fine gray ware rim

15.5.90

EMG 4 (2)

Small lot c/w brick sherds

1 tiny amphora toe frag

1 brick frag c/w impressed ribs + horizontal lines

one bag

Tuesday 15 May 1990

Weather: heavily overcast, clear to W, cool breeze

Workers EMG 5: Younis, Younis, Khalid, Juman, Aziza, Aziza Saloum, Amouna, Halima (8)

EMG 4: Mhamed, Hussein, Hamad Saloum, Hamed Aisa, Dofar, Hussein Abd. Monza, Saleh (8)

EMG 5

Work continues at the N end of the trench where the definition of the structure is still unclear. At the SE we seem to have picked up the wall, but whether it continues to N edge of trench or hangs W remains to be seen.

We are well below the stones - this deposit for today will be designated stratum (2).

By 9.00 am very little falling masonry from the newly

crumbled limestone.

In the centre of the trench a huge block lies deep into the bank and will prevent a closer look at the continuation of the wall line. The trench may therefore soon have to be extended further E towards the E boundary of the 5m x 5m trench as originally measured - perhaps 1m more may be sufficient.

After a 8 am. strong wind from NE

Actually the E boundary of the 5x3m trench has been broken through considerably as a result of removing large rubble.

10 am. At the N a shapeless large block was removed to reveal a depth of crushed limestone deposit beneath. A moment later a block rolled from the bank. I think again that we could have a corner here but time will tell.

15.5.90

EMG 4 S (2)

- medium wt c/w body frags.
- 4 rim frags c/w jars (including 2 joining)
- 3 frags amphora toes.
- 4 handle frags
- 1 rim frag mortarium
- 1 body frag green glaze ware.
- 2 body frags rg.
- 1 rim frag echinus bowl

15.5.90

EMG 4 S (3)

- medium-large wt of c/w body frags
- 4 rim frags c/w jars/bowls
- 1 handle frag
- 1 rim frag echinus bowl
- 1 body frag with small pierced hole
- 1 rim frag mortarium
- 1 rim frag semi-ware
- 1 base frag c/w bowl
- 1 base frag by bowl int: roudletti iw
- 1 rim frag semi-ware bowl

- 2 small body frags rg
- 1 bowl frag cooking ware

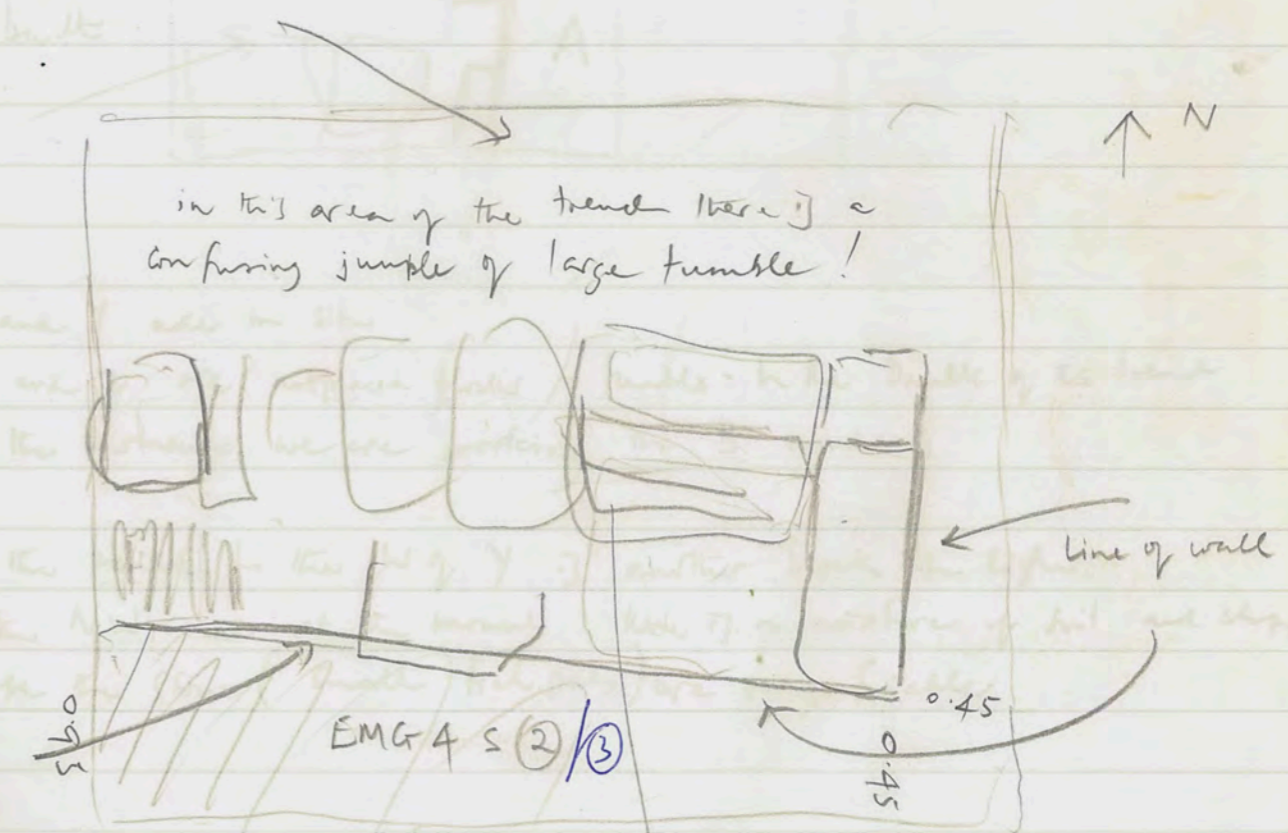
* 1 large bag filled in pressed rakes of squares + rectangles.
* in large bag with bag shreds

15.5.90

EMG 4 S (2)

Work continues on this light brown soil deposit
8:30 am we reach the W of this section and come to the black soil. The pottery is kept separate. the black soil is designated stratum (3)

The black soil is very fine and loamy. The top of the black soil is level with the top of the second upmost course of the brick; it appears to extend from the V bank to 1.20 m towards the E



fine ashlar blocks
2 courses uncovered so far

Very decayed but in situ blocks

11.25 from 20 cm from S 2 (3)

op. 2. 21

EM 6. 5

10.45 am.

15.5.90

6.

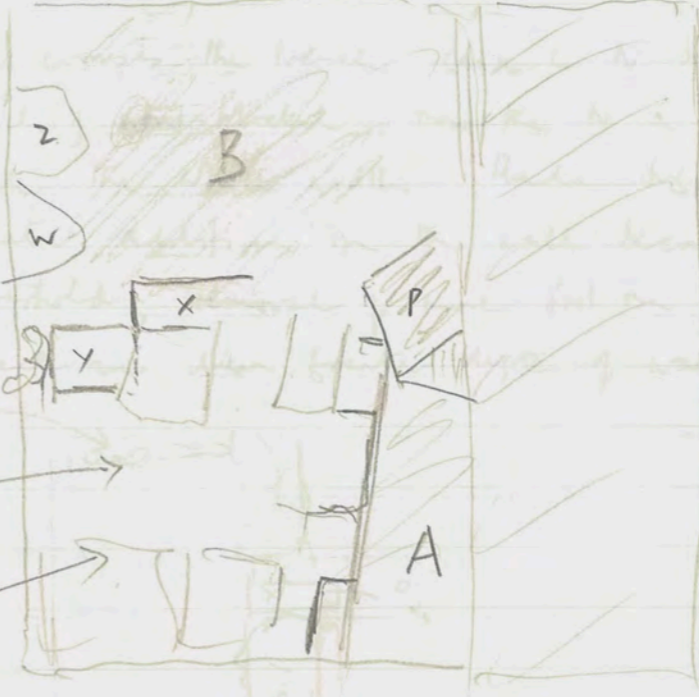
EM 6. 5

10.45 am.

3m

2m

Solid built



P = rubble in baffle.

x and y are in situ

w and z are misplaced blocks - rubble - in the baffle of the trench

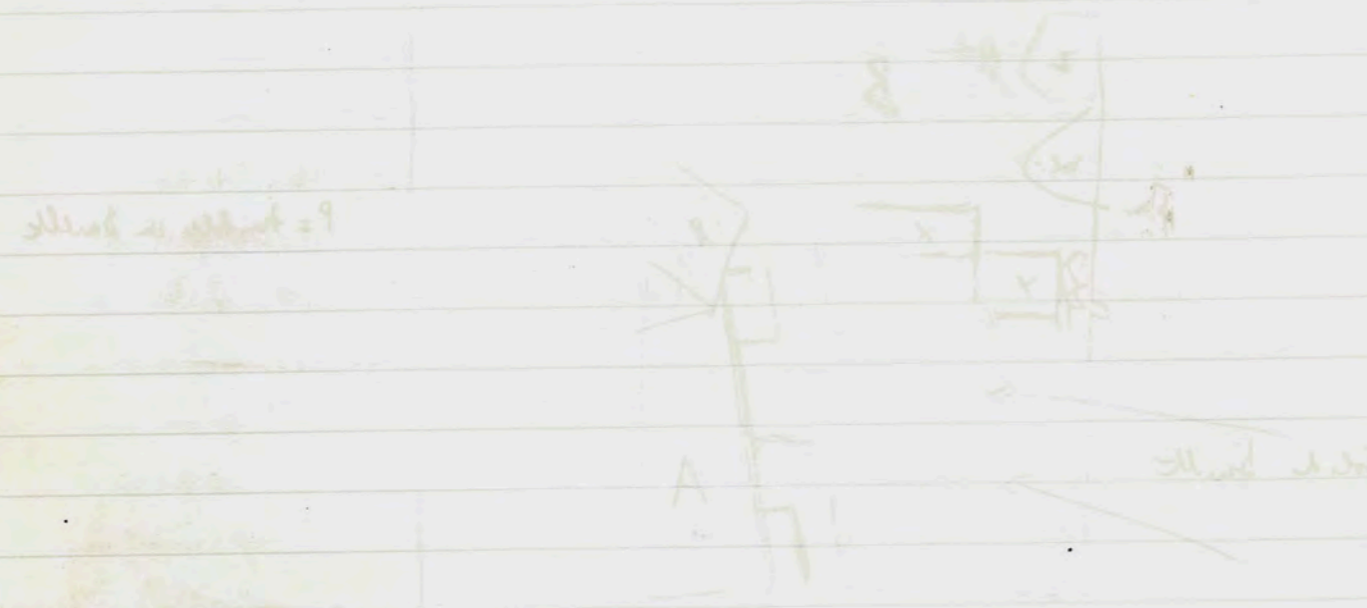
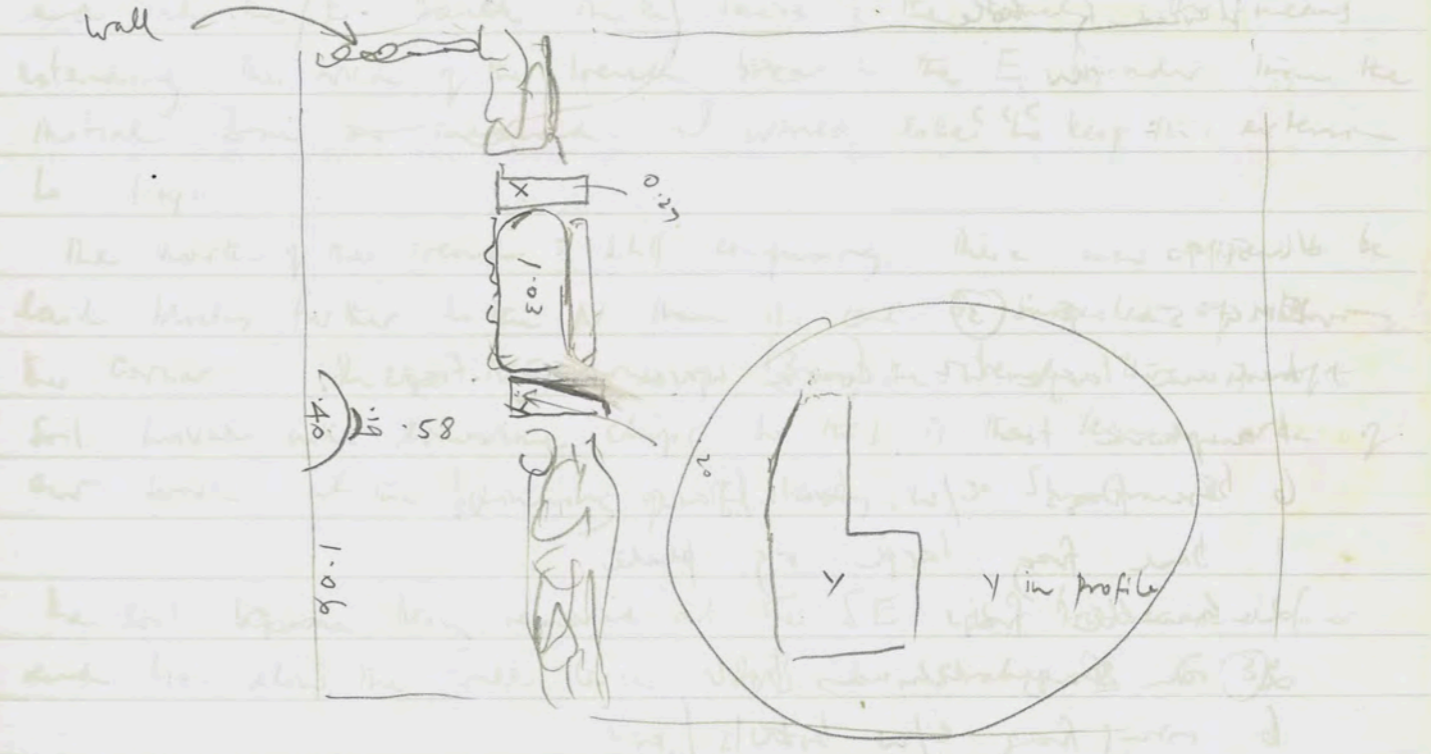
At the moment we are working in B and A

In the baffle to the W of y is another block in light
in the NW corner at the moment there is a mixture of soil and chips
because the stones (small field stones) are very friable

15.5.90

207/3 Radi
12 noon EM ϕ of large coarse ware jar in situ at N
bank of 207/3 R11 6, -13

A wall crosses the trench close to N bank. It is pierced by a door which is now blocked; from the N a huge stone can be seen to block the whole width. Radi suggests that this door was a later addition in the wall because the wall continues below the threshold; removal of more soil in progress at S fork showed reveal an even greater depth of wall.



It is suggested that the wall was built in two stages. The first stage was the construction of the wall to the N of the trench. The second stage was the construction of the wall to the S of the trench. The door was added in the second stage.

16.5.90

EMG 5 (2)

- 10 c/w body sherds
- 2 rim frags c/w jars
- 1 rim frag rim worn with weak brown paint
- 1 body frag dull rg on exterior
- 1 body frag dull bg.

1 metal plate
pierced by hole
inw
= ???



16.5.90

EMG 5 S (3)

- medium-large wt coarse ware body frags
- 1 amphora toe
- 6 base frags c/w bowls/jars
- 1 base frag large rg plate
- 2 handle frags
- 2 rim frags echinus bowl
- 6 rim frags c/w bowls/jars
- 1 large body frag pillos
- 3 body frags impressed lines + curves
- 3 body frags cooking ware
- 1 rim frag fine rg cup/bowl
- 1 rim frag dull bg bowl
- 2 frags basalt grinders

inw

Wednesday 16 May 1990

Weather: overcast after rain during the night; slight breeze
Workers: EMG 5: Younis, Younis, Amouna, Khalid, Junaa
Aziza, Aziza Saloum, Halima (8)

EMG 4: Hussein, Mhamed, Oopa, Hamad Aisa, Hamad
Saloum, Saleh, Mousa, + 1 (8)

EMG 5

We begin by removing two large blocks of tumbled that lie across and into the E bank in the centre of the trench. This means extending the area of the trench ~~area~~ to the E broader than the initial 3m as measured. I would like to keep this extension to 1m.

The north of the trench is still confusing. There now appear to be laid blocks further to the N than the one I suspected of blowing to the corner. In the NE corner of (3m) the trench there is soft soil mixed with limestone chips so this is the second area of our work at the beginning of the day. - Station 2

The soil ~~exposed~~ being removed at the SE is brown and fine and lies below the wall level. This is station B S (3)

12:30 pm Work continues on E but has not yet reached what could be a corner. Work in NW shows a confused deposit of blocks, some quite small and irregular (now at least). I need a bit more indication of structure before I know whether to remove these stones or not.

We work now at the tiles (E+N) of the presumed corner

12:45. It truly looks like we have a corner: that should be the entry to the interior space. Tomorrow will tell more clear

16.5.90

EMG 4 (2)

9 c/w bray frags including one with shaly red print + one pitless frag.

16.5.90

EMG 4 S (4)

medium wt c/w body frags

4 rim frags c/w jars or bowls

1 bray frag w. handle root

3 pebbles

1 rim fabric frag. thick fabric echinus bowl

1 loomweight white clay

16.5.90

EMG 4 E (2)

doz. coarse ware body sherds

2 base frags c/w bowls/jars

2 bray frags cooking ware

1 bray frag fine rg w. rithis

1 bray frag rg
1 handle frag.

one bag

16.5.90

EMG 4

Work continues at the S in what I now designate S (4). This is a lighter soil than the very dark black of yesterday. At the very west there is a limestone coloured area extending 1m E approximately from the W baulk. We leave this for the moment and continue with the soil (4).

Along the E boundary (E2) we are working at the N and S. At the S we have removed the deposit down to the bottom of the top most preserved course. This is the large block at the SE corner of the S tower. At the NE corner mullers are still exposed. The E wall of the tower is so angled within the square/fence that we should have the ~~thick~~ solid bulk of the tower in the NE corner. Instead there seems to be tumble and some soil.

Towards the W we have dug down approx. 1.10m so there is a pit surrounded by decayed in situ blocks at the S and large tumbled blocks on the other three sides. In this hole the deposit is soft and powdery in the centre and beneath the blocks of tumble. There however, two non-contiguous in situ blocks, which seem remarkably well preserved lie at this lower level in the hole. Their N edge lies approx 2.80m from the S wall of the tower (recently revealed at S of this trench). This is a rough measurement for guidance. This shows would be the S boundary of an interior space equivalent to that in the N tower. The fallen blocks of tumble surrounding our little hole are large but they will have to be removed.

7:30 am One large block can now be removed from the W of the hole this will give space for exploring the NW part of the trench. The other blocks may well be left untouched if we can get information on the NW corner.

16.5.90.

EMG 4 E (3)

2 1/2 doz bag frag c/w

1 handle frag.

1 rim frag firm plate?

1 rim frag echinus bowl

1 rim frag c/w bowl

2 rim frag c/w jars.

One small bag

16.5.16.4.90

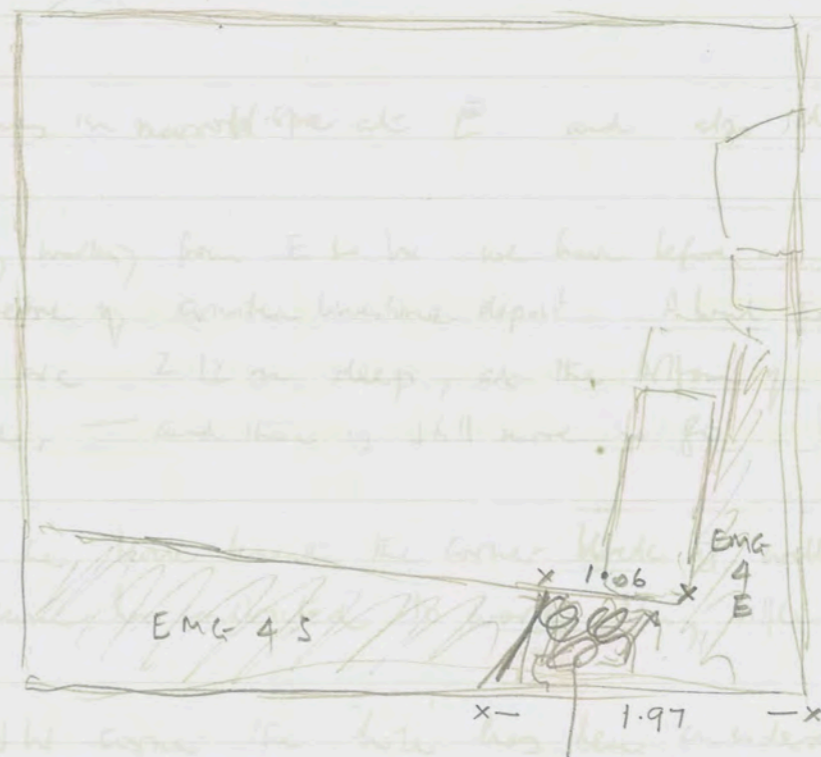
EMG 4

8.30 am We are excavating now some 80cms below the top surface of the SE corner block of the S tower and we have come to a hard surface. I was about to change station nos. to (3) but because the soil may have been much darker at this depth will wait to see what happens.

At the NW corner the rubble continues to be removed.

At the S, there has emerged a rubble wall running diagonally SW/NE. At this point we are just completing the deposit with brown soil and a harder, whiter, limestone (unbed) deposit is emerging. This bed appears to be slightly lower than it is at the W.

EMG 4



rubble wall

16.5.90

JK 16.5.90

EMG 4 S (5)

9 long base work were

EMG 4

EMG 4 S (5)

9.30 am.

We are now working in a deposit of crushed and powdered limestone. This stratum is designated stratum (5). At the E near the diagonal wall the limestone stratum below the top of the 4th preserved course of the socle. At the N., the upper surface of the crushed limestone stratum lies above the 2nd of the 2nd preserved course of the socle.

The blocks of the socle (where fully preserved) are more or less square with chamfered or drafted edges and a flat vertical face - though chisel marks are visible across each face. Near the middle wall the third top course has a prominent boss and blocks in the 4th top work at the E have prominent bosses.

Work continues in narrow space at E and also clearing rubble at NW.

12.20 pm By working from E to W we have before us a large depth of about a metre of crushed limestone deposit. About the middle of the trench we are 2.12 m deep, at the bottom of the 4 uppermost preserved course, - and there is still more to go. Work continues.

At the E, the block beneath the corner block is well set back. The space has become too constricted to work. Very little left from today.

At the NW corner the 'hole' has been considerably widened and we are down to about the level where I observed in other blocks (but final material needs to be removed before a clear view is gained).

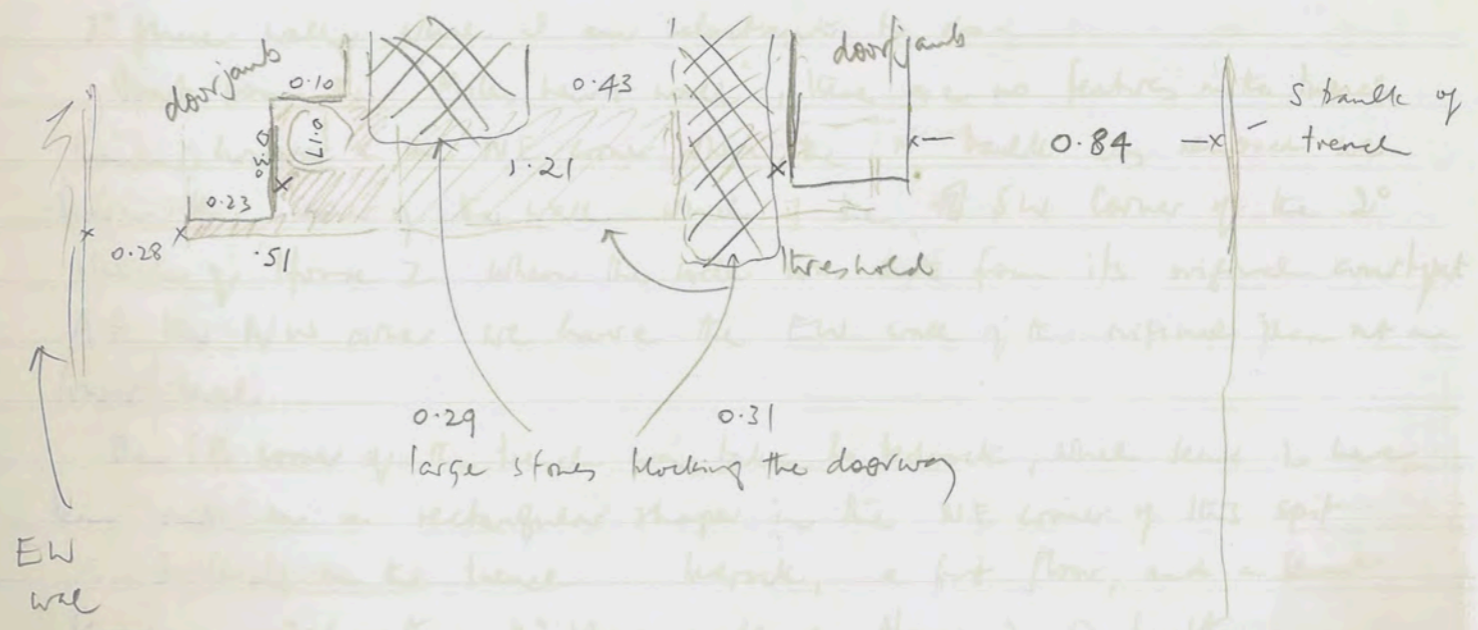
16.5.90

207/3

10.45 am ϕ of Radi's track R 6 - 20
 1st of the doorway, now blocked, in the E bank, from the W (the door is at present in shadow). Details show the threshold and the circular but shallow depression for the hinge of the door at the N

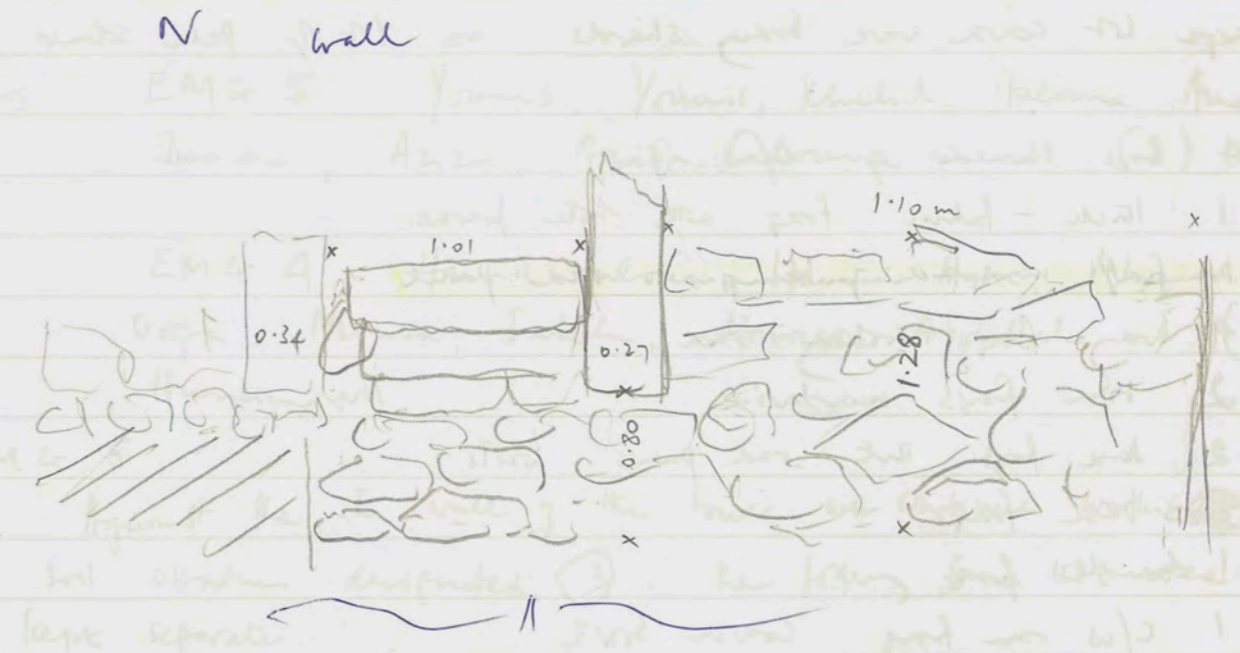
R 6, 15-20 are ϕ of the S face of the EW wall that runs across the trench rather to the N. Since my last ϕ of the small section at the N, this floor deposit has been taken down to a hard floor level with the threshold in the E doorway. There are 3, perhaps, 4 works in the EW wall below the level of the doorway. The N doorway is therefore quite high above the floor associated with the E doorway. It was previously suggested that the N doorway belonged to a second phase and its blocking up to a third phase. The opening of the trench immediately to the N may help determine this.

The threshold is neatly made of 3 limestone slabs. The N doorjamb is curved. E Door



Thurs 17 Mar 16.5.90

207/3



207/7 KB

Φ R 6, -33 from N E. W etc. showing 2^o phase wall of two courses that runs rather diagonally NS and which was first picked up in Miles Lewis' trench though not accepted as a wall without much doubt. Φ also include the E wall of Freden's trench 1989 together with a large stone which lies between these two walls and which cannot be explored further without removing the 2^o phase wall where I am reluctant to do.

Apart from the "Miles Lewis wall", there are no features in the trench though, however in the NE corner where the N wall was removed we have the corner of the wall which is the SW corner of the 2^o phase of House 2 when the wall was cut from its original context. At the NW corner we have the EW wall of the original phase at a lower level.

The SE corner of the trench was taken to bedrock, which seems to have been cut in a rectangular shape in the NE corner of this spit.
 ∴ 3 levels in the trench: bedrock, a first floor, and a second floor on which the 2^o phase wall of House 2 is built.
 H. between 1^o & 2^o floor = 36 cms only

Stratigraphy shows big chips of limestone mixed heavily in strata just below level of 1^o floor. (Note remarkable constant ...)

17.5.90

EMG 5 (3)

large wt coarse ware body sherds inc. lot of pale colour

4 base shoulder of c/w jar

1 handle - fabric frag with hole pierced.

1 frag underside of lamp red paint

4 body frags cooking ware

2 rim frags mortaria iw

2 base frags int. red paint bowls

3 base frags.

1 handle frag.

1 c/w rim frag coarse bowl.

1 rim frag pie crust c/w

1 rim frag c/w jar

8 rim frags echinus bowls.

body frags w. paint.

2 joining rim frags echinus bowl: join shows fine mica inclusions

1 rim frag: weak brown paint interior.

1 body frag gray ware

1 base frag by bowl rimletting iw

17.5.90 EMG 5 (3) ?

small wt coarse ware sherds

1 handle frag.

1 rim frag echinus bowl

5 rim frags c/w bowls or jars some with paint

3 base frags c/w bowls or jars

3 frags cooking ware inc. one handle root

body frags inc. one small frag fine rg

Thursday 17 May 1990

Weather: after an extremely windy night, overcast, sunny, light breeze from W

Workers EMG 5: Younis, Younis, Khalid, Halima, Amouna, Jumana, Aziza, Aziza Saloum (8)

EMG 4: Hamed Saloum, Hamed Aisa, Mohamed, Oofa, Mouna, Saleh, Hussein Abdallah (8) Hussein.

EMG 5

Against the E wall of the tower we continue working in soil stratum designated (3). The filling for this area is kept separate.

We also continue working at the N where I presume the is the entrance to the internal space. At the level below the "corner stone", however, a laid block is coming to light.

To the west of the corner there are clearly two large blocks lying at awkward angles and are therefore not in situ. We remove these at 6.45 am.

If this is an entrance, it is difficult to see where the N edge lies.

8.15 am. Emergency ϕ of corner block which is very loose and dangerous for the workers. Shadows of photographer are in the way Barry R takes various measurements. Later the block must be removed before it rolls and does damage

ϕ RT, 1-5.

The block has to be removed later because it hangs dangerously over a decayed lower course

17.5.90

EMG 4

Work continues at S of trench removing the deep deposit of crushed limestone strata (5)

7 am a round piece of corroded iron

At the N we are still clearing debris from the 'hole'. At the W bank there is clearly a huge block in a tumbled position. The block we searched for yesterday as being the 6th is clearly cleared.

Quite a deal of hose work by 7 am. It comes from the 'hole'

There is crushed limestone below tangle i: (3)

I call this EMG 4 N (3): the party strata on the tags needs changing

8:30 am. ϕ of Lick's Trench 364/2 with bank 364/2 + 364/5 removed showing strange rectangular structure and steps and N wall of trench intact. This bank will be removed to show E face of rubble wall which is now hidden in the bank

Roll 7, 5-15.

Apart from the rectangular structure the base 364/2 is bare but there is clearly a hard packed floor.

8:45 RT, 16-17 of 206/1 from N to show bridge wall towards E i.e. 206/W E. Floor at E has been cleared.

17.5.90

EMG 4 N (3)

Small lot coarse ware body sherds

1 rim frag mortarium.

2 base frags c/w bowls/jars with strokes red paint

2 tile frags.

17.5.90

EMG 4 S (5)

5 body frags c/w pottery (only)

17.5.90

EMG 4 N (3)

1. ...
 2. ...
 2. ...

...
 ...
 ...

...
 ...
 ...

...
 ...
 ...

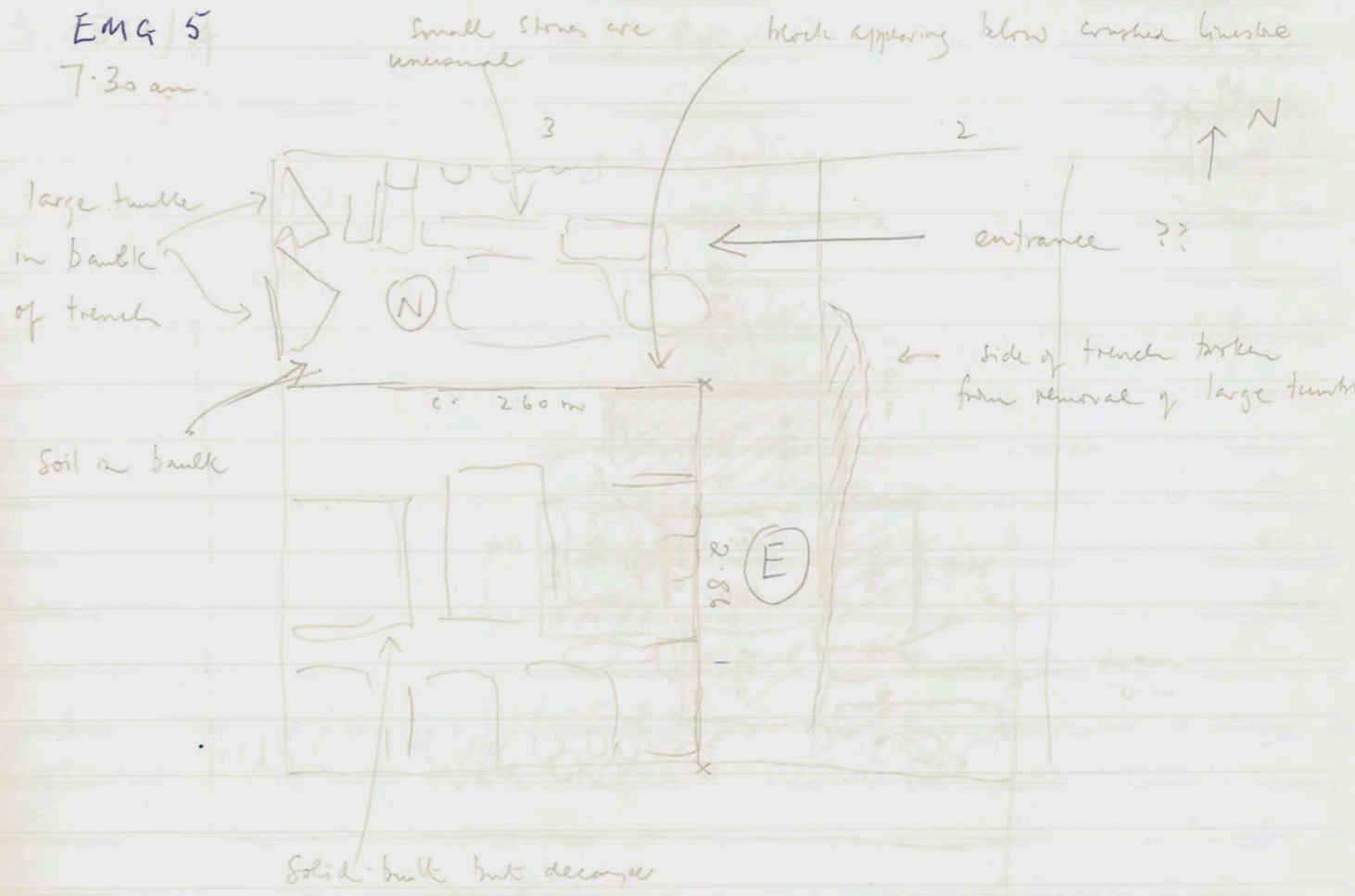
...
 ...
 ...

...
 ...
 ...

...
 ...
 ...

17.5.90

EMG 5
7:30 am



Sketch of solid-built tower and suggested entrance at (N)

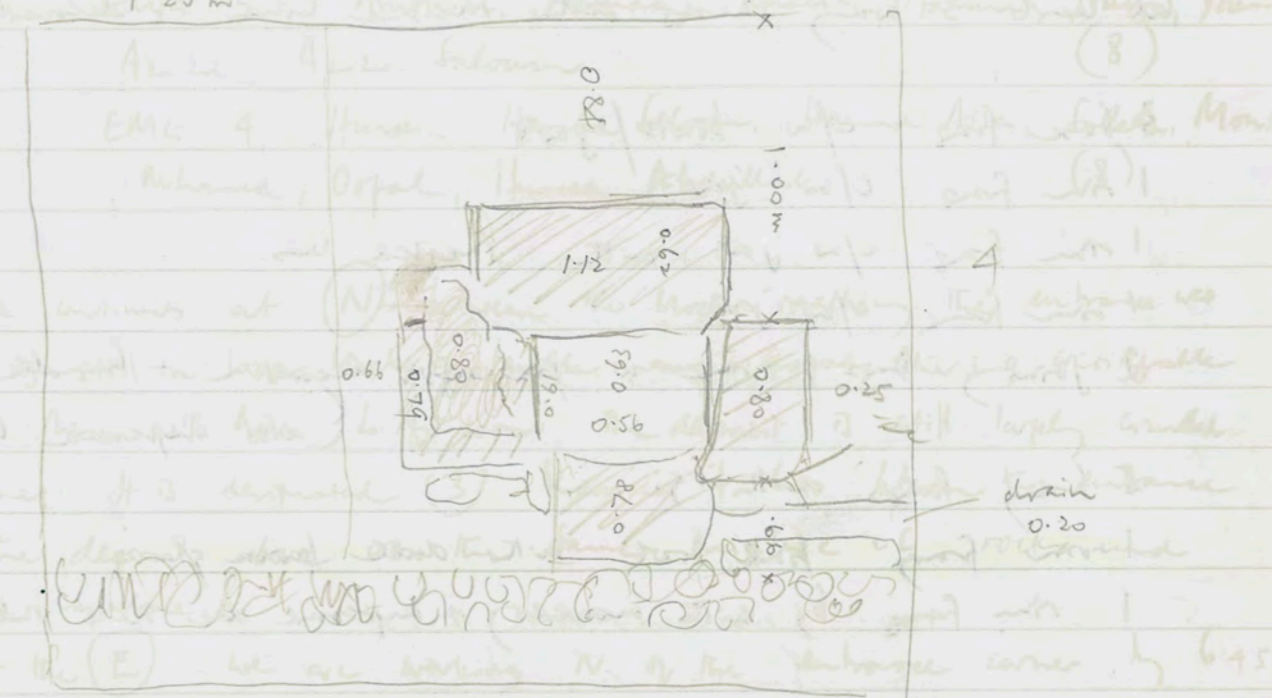
9m Roll 7 ~ 31
 Radis E door in new piece from W + E
 from W breaking the cithen. details of threshold etc.

By the end of work today it is clear that the entrance to the tower is between where I have marked the corner above and an EW row of narrow stones at which the arrow is pointed above

Monday 17.5.90

333/4

Work along the line... 1.20 m



At the (E) ...
 There is some ...
 φ 11-10 cm ... 36 ...
 ... need more φ ...
 ... deposit of ...
 to give a clear view of the ... at the E.

I think ...
 before ...
 ...

- (E) the strata are:
- (1) by soil
 - (2) ...
 - (3) ...
 - (4) a narrow band of ... limestone
 - (5) a dark soil

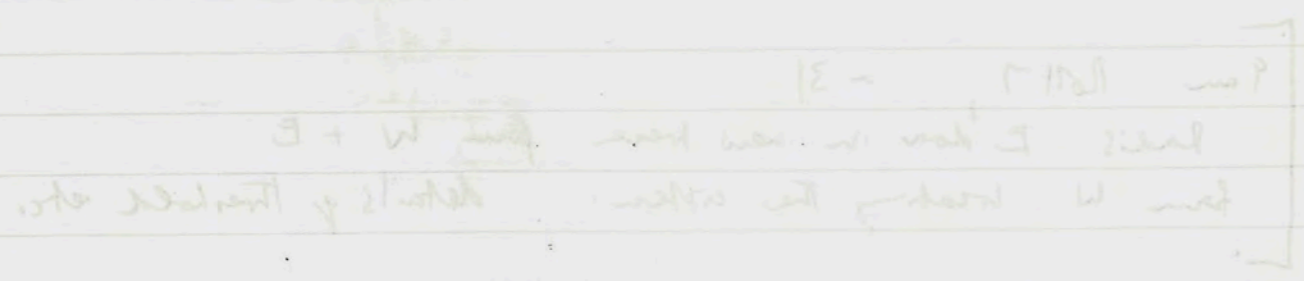
At the N of the E ...
 ...

17.5.90

EMC 2

(1)

(2)



... the ...
 ...
 ...

21.5.90

EMG 5 N (3)

medium wt work ware body sherds
at least 3 body sherds with incised lines (decoration)

3 base frags c/w bowls/jars

1 rim frag c/w jar.

1 rim frag c/w jar with incised lines.

1 rim frag c/w jar.

2 joining frags to rim w. pie crust decoration + handle root
(also impressed wavy line etc)

5 body frags with rg.

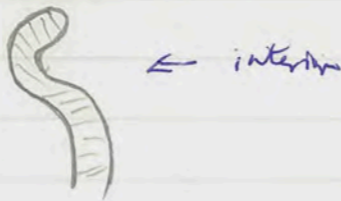
1 rim frag fine base with dull brown glaze

1 rim frag lg with moulding + impressed dec near interior rim

1 rim + handle frag of large c/w jar.

1 rim frag of ^{dark} gray ware

perhaps orig. green glaze: fabric porous + hard-fired.



Monday 21 May 1990

Resume work after 3 days holiday.

Weather cloudy but sun shines: slight breeze at first from NW

Workers EMG 5: Amouna, Jumaa, Khalid, Halima, Younis, Younis, Aziza, Aziza Saloum (8)

EMG 4: Hussein, Hamed Saloum, Hamed Aisa, Saleh, Mousa, Mohamed, Oufal, Hussein Abdullal (8)

EMG 5

Work continues at (N) between the blocks marking the entrance was there is still a large block of rubble and several others of considerable size. There will have to go soon. The deposit is still largely crumbled limestone. It is designated (3) because it lies between the entrance but the deposit above was the same mixture of rocks and decayed limestone.

At the (E) we are working N of the entrance corner by 6.45 there is some filling but this is very likely comes from the top of the black stratum which now lies along the wall at E about 1.50m from the upper surface of the solid built tower. Hopefully we are working on the upper deposit of decayed limestone and rocks in order to get a clear view of the entrance at the E.

I think that soon I shall have to extend the trench to the W before it gets too deep by 2 metre to the W and 2.50m N/S in order to clear the entrance in both width & depth

(E) : the strata are:

- (1) top soil
- (2) rubble + pale soil + crumbled limestone
- (3) a darker soil
- (4) a narrow band of crumbled & white limestone
- (5) a dark soil

At the N of the E trench (4) seems to be immediately below (2). The filling today is coming from this stratum. Better call it (5)

21. 5. 90

EMG 4 N (4)

medium wt coarse ware frag sherds.

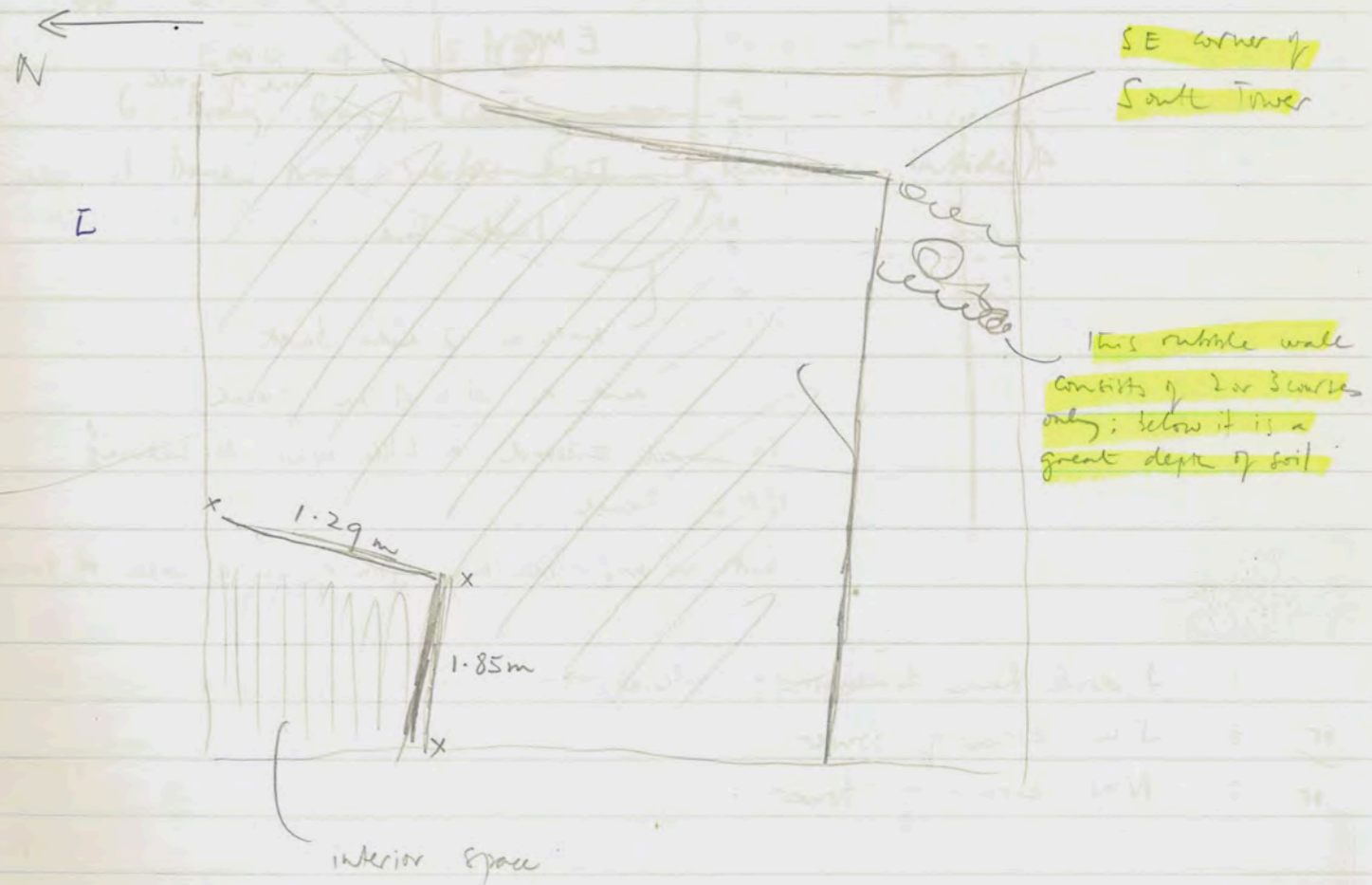
- 2 amphora toes
- 1 base frag crown ware bowl with flat base
- 5 base frags c/w bowls/jars
- 2 rim frags c/w jars
- 1 gray ware unguentarium knob.
- 2 tile frags.
- 3 handle frags.
- 4 rim frags echinus bowls
- 5 4 rim frags notched-rim bowls.
- 2 rim frags fluted rim bowls
- 1 rim frag cooking ware.
- 2 body frags b.g.
- body frags with part or impressed lines.
- 1 base frag green glaze bowl

21. 5. 90

EMG 4

EMG 4 N (4)

In the 'hole' today the soil is rather a light brown and is now designated (4). Some plaster and bone is emerging. It is now clear that we have the SE corner of the interior space since there is a wall aligned approx NS meeting the EW wall that had been previously defined. I think we can work here a bit longer although the space is confined. The question is where to next.

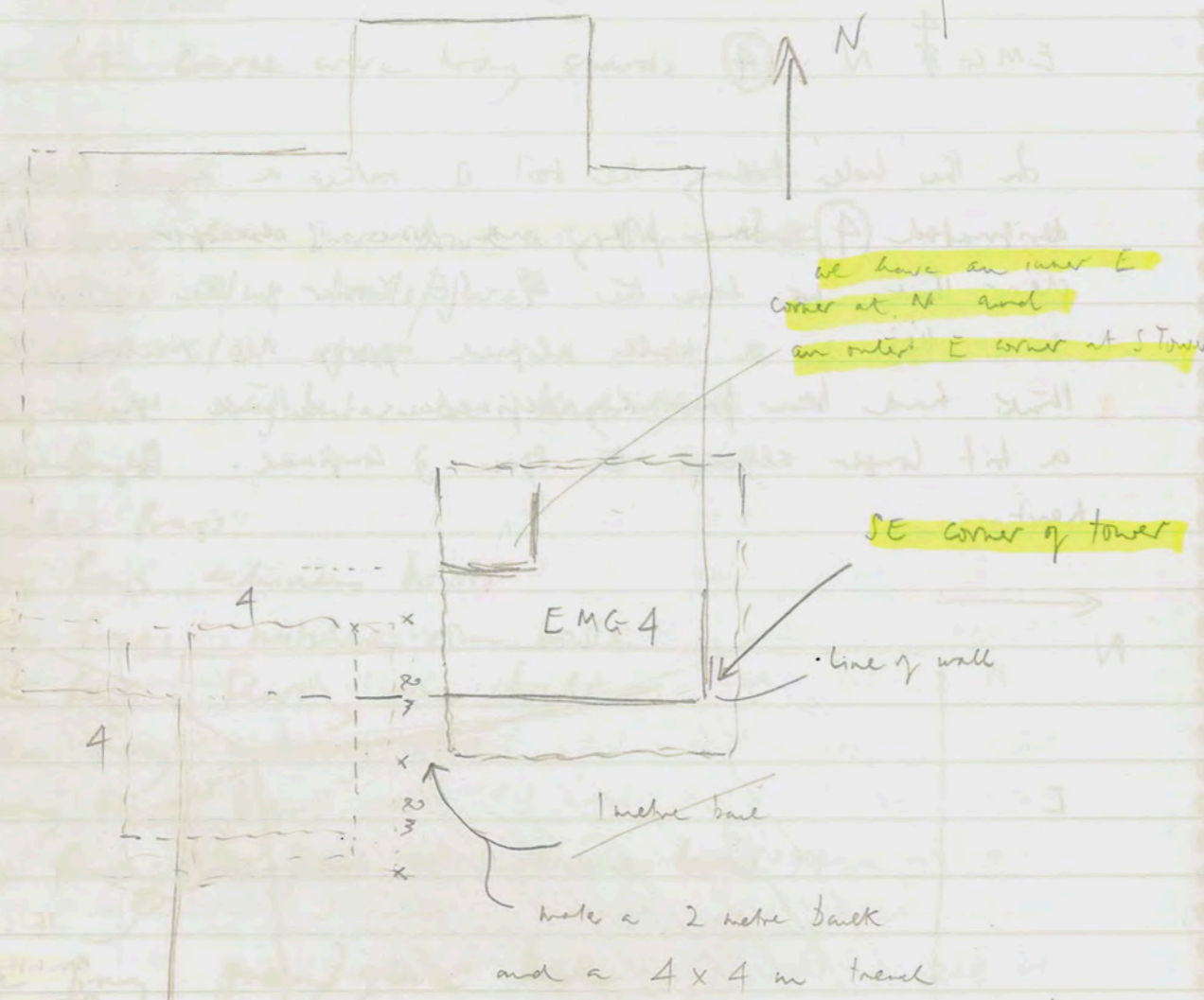


The centre of this trench is a great jumble of decayed stone; a good deal of it in situ. I have found what I wanted so it should be time soon to move on. I would try for the width of the interior space or where the wall meets the tower

21.5.90

21.5.90 South Tower : schematic plan to aid a sketchy future trend

EMG 4 S (5)



we have an inner E corner at N and an outer E corner at S Tower

SE corner of tower

It would encroach a little over M. Galvin's SMG trench but we might clarify join of city wall + tower

- 1. I don't have dimension of interior room
- 2. SW corner of tower
- 3. NW corner of tower

NB: the SW corner of tower is not in alignment with SE

EMG 4 S (5)

At the S the deep deposit of crushed limestone continues and appears to be deeper still. In order to maximise result + minimise effort, I measure out 1 m along the S wall of the trench W of the diagonal rubble wall where from the point where this rubble wall meets the wall of the trench. This showed five sufficient space in which to operate and still reach the wall foundation

By 7.15 there is no pottery

21.5.90

EMG 4 S (5)

6 brick frags cooking ware
1 bare frag c/w bowl (blackened inside)

10.4 of length of trench is new trench with surface rubble deposit of soil

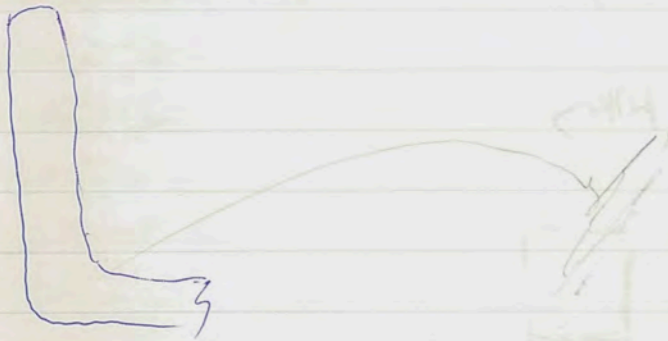
21.5.90

EMG 5 E (5)

medium-large wt c/w bag shards including many frags prob. for

same part: shoulder frags w. impressed marks. like etc.

1 frag. with full profile flat-bottomed round c/w bowl



5 base frags c/w bowls or jars

7 rim frags c/w jars (one with pie crust dec.)

3 body frags c/w jar (2 joining): one with handle not, all with pie crust dec.

9 handle frags c/w vessels

2 rim frags eelined bowls

3 rim frags flaring rim bowls

3 rim frags mortared in.

10 body frags cooking ware

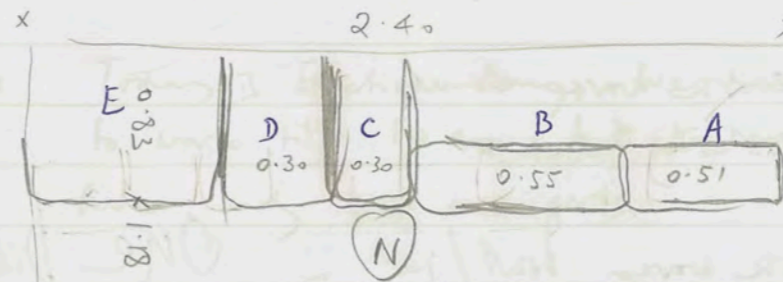
1 rim frag cooking ware

some of body frags

1 round flat-bottomed base frag half of bowl (thick fabric) ext. impressed / lines int. raveling

EMG 5

21.5.90



8:55 am. Work progressing satisfactorily ~ NTC (N) and (E)

At (N) we have touched a black deposit (with streaks of red perhaps). It seems quite a hard deposit c 90 cms down from N boundary of entrance i.e. This should be (4)

A E the upper surface of stone A

10 am. small frag of iron pin in doorway = EMG 5 N (3) from just above the hard surface
Also one or two small frags of RS

10:45 ϕ of Leah B's new trench with surface rubble cleared of soil
RM 8, 1 -

22.5.90

SMG 2 (1)

6 body frags coarse ware vessels

1 body frag cooking ware

1 bowl frag coarse ware bowl/jar

one bag

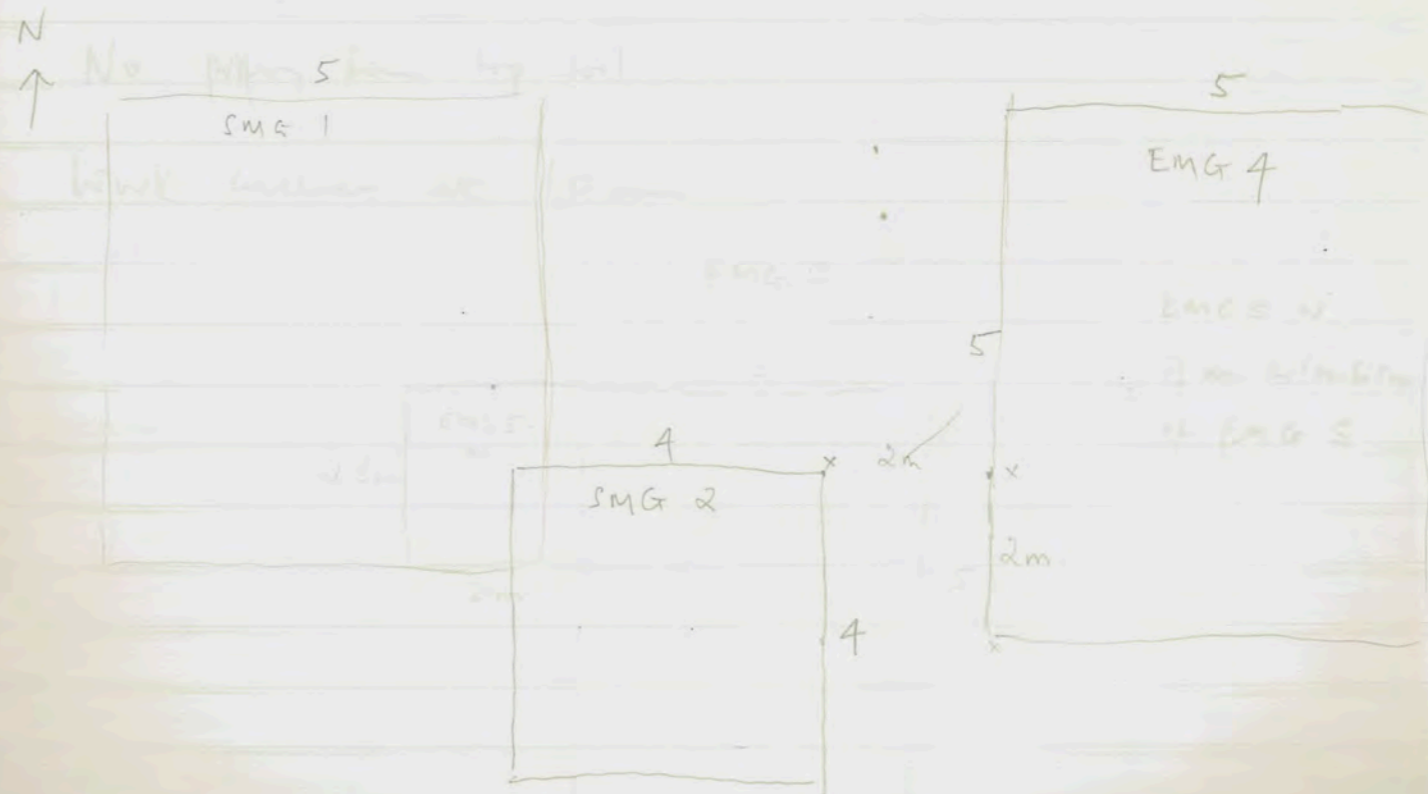
Tuesday 22 May 1990

Weather: hazy at first. sun shines. slight breeze from NW, increasing

Workers: Today is Election Day. We had planned, with Radi, to work till 10 am; but the men and women are not here, only boys and girls (Niger)

Workers: Oopa, [Hamad Saloum], [Hamad Aisa], Antre, ~~Antre~~ (6) departed early: Mousa (6) Halima, Jumar, Ariza, Aziza Saloum. (Anoune) (6) Freede

In the circumstances I abandon the final clearing of EMG 4 and begin on the top soil of ~~EMG 2~~ SMG 2 a trench measuring 4x4 m which was pegged out just before the completion of work yesterday. I have departed from the pattern or system of trenches in an attempt to find the join of the S tower at the E with the inner face of the circuit wall. The NW corner of SMG 2 encroaches on the ^{SE} corner of SMG 1: to ensure that we locate the join.



Small amount of mte.

Wednesday 23 May 1990 22.5.90

Work a little later at first, sunny, still 22.5
EMG 5 W 5; Young, Young, Young (Young, Young, Young)
Area Area Area Area Area (8)

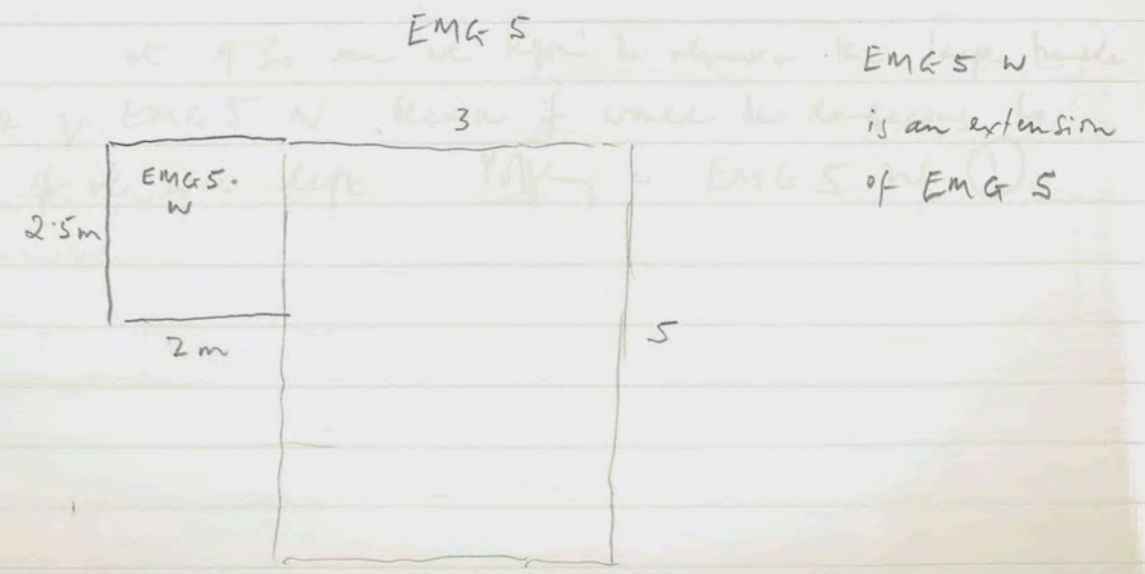
This is a Westward extension of EMG 5 at the N in order to disclose the full entrance into the interior space of the N tower. There are still some large blocks to be removed from the entrance in EMG 5 but I do not intend to excavate deeper for the moment in the area designated EMG 5 N. There is also large rubble in EMG 5 W: certainly at the surface.

9 am. R 8, -12

from E of the present state of the entrance passage. The excavated level near the edge of the trench is a hard packed floor which slopes gently upwards from E to W. In the higher level, just below the soil surface, are 2 large blocks of rubble which will be removed during the excavation of EMG 5 W. But in the lower level the rubble is the large uncut chunks of limestone. Perhaps these came from the rubble wall such as was in NMG 1 above the E wall of the interior space.

No pottery from top soil

Work concludes at 10 am



23.5.90

EMG 5 W (1)

7 body frags coarse ware vessels.

23.5.90

EMG 5 N cleaning

medium wt coarse ware body sherds

2 handle frags.

2 base frags coarse ware bowls/jars

3 rim frags w/jars.

2 rim frags eckinus bowls.

2 body frags cooking ware.

body frags rg.

1 body frag gray ware

Wednesday 23 May 1990

Weather: a little hazy at first, sunny, still

Workers EMG 5; Younis, Younis, Amouna, Junia, Halima, Aziza, Aziza Saloum, Khalid (8)

South Tower: Hamad Saloum, Hamad Aisa, Hussein, Oofa, Hussein Abdullah, Monfa, Saleh, Mhamad. (8)

EMG 5 N

Work begins on cleaning the entrance way preparatory to removal of the large tumbler that lies along the S side of the passage.

The pottery and bones are described as coming from 'cleaning'.

Work on EMG 5 W is suspended for the time being

6.45 much done already for the cleaning: the soil is black and is actually coming from just above the hard-packed floor of the entrance

A rim frag of Hellenistic glass is also discovered here

6.50 a nail from the entrance way cleaning

This black deposit is (4)

9.15 one worker from each team retires home side.

EMG 5 W at 9.30 am we begin to remove the large tumbler in the haulie of EMG 5 N because it would be dangerous to proceed further if it were left. Pottery = EMG 5 W (1)

23.5.90

EMG 4 S

Final cleaning of bedrock at E of this wall; cleaning of ashlar blocks of wall; final cleaning of E of trench and the inner space.

c 11 am ϕ of EMG 4 N + S end of whole from E end of R11 8, and beginning of R11 9, 1-9.

EMG 4 N This is the NW area of the trench in which was found the SE corner of the interior space. This has been completed down to the shelf of stone such as was discovered in NMC 1 of the N tower. The deposit below this is almost pure crushed limestone

At the E 4 courses are preserved and a decayed trace of another there is no sign of a rubble wall on top of these 4 courses

At the S wall there are 5 courses preserved; but in the upmost (5th) course there is a large limestone block twice as deep as those in 4 courses below. Perhaps the lowest 4 courses formed some sort of socle

E

I pm MW takes ϕ of his trench showing walls at N and E, the known base in the NW corner; the two slabs of basalt in the NE corner and the hard floor of what appears to be the first occupation R 9, -12

R 9 is unnumbered

23.5.90

SMG 2 ①

medium wt coarse ware body sherds

8 base frags coarse ware bowls/jars (incl. one = rg)

1 handle frag

2 rim frags echinus bowls

1 rim frag coarse ware jar

5 rim frags 'straight-sided' bowls

1 rim frag fine rg bowl/cup. inv.

5 rim frags flaring rim bowls fire plates?

5 body frags cooking ware

small body frags rg

1 small body frag (brown) relief-moulded bowl. inv.

base frag figurine near portion no moulding inv.

23.5.90

SMG 2

With 4 workers, we continue removing the top soil from the trench.

11.30 am

The line of blocks at the N is blowing clear. Round the centre of the trench are some field stones of tumbled which we remove; there appears to be plenty of soil still at the N and elsewhere below the tumbled.

09.3.90

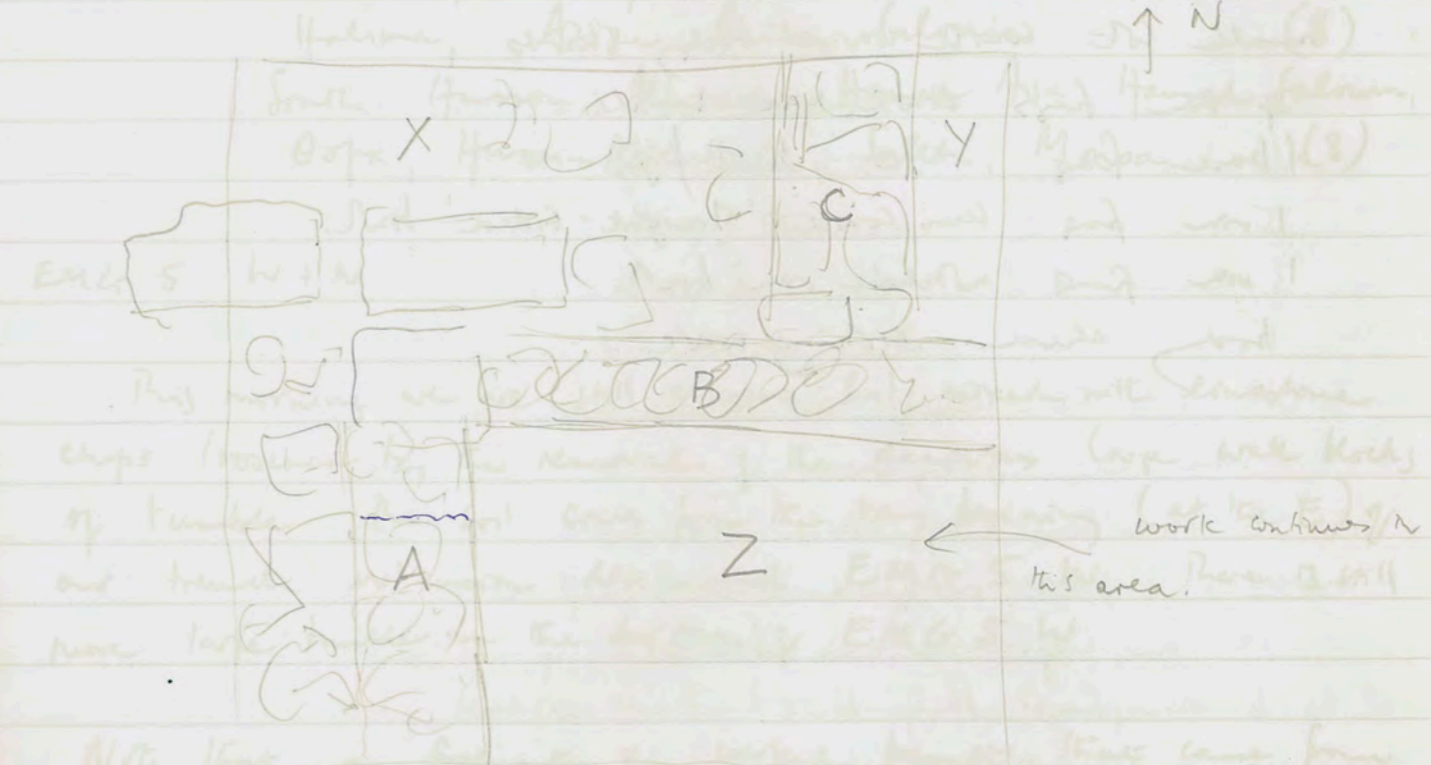
23.5.90
 1 handle bag
 8 box bags were over built / just (each one = 10g)
 1 handle bag
 5 box bags all having one handle
 5 box bags cooking were
 1 handle bag (over) along narrow track

One bag frame over below no marking

Jack 333/7 333/4 41km

Thursday 23.5.90 1990

W 391/3
 All present today. All present yesterday
 Workers: Nura, Yannis, Yannis, Richard, (English), (Greek)



Work proceeds today in area Z at SE of 391/3 tangle is being removed revealing a rich brown soil beneath. No pits found by Sam. I take it that the tangle is (2) and that therefore the rich red-brown soil is (3). There is tangle embedded in the soil and this is now being removed.

11.45 the rich red-brown soil continues. It is full of large chunks of limestone tangle which are removed. There are some huge tangle also.
 Q. The question is: is A a wall for the total width of the trench or does it end as indicated above fairly close to wall B

A. See p 27.5.90

The masonry on each side of the entrance passage (along) is a useful or attractive finish. very workmanlike. Large blocks of tangle being removed, proceeding - (1) (2) (3) (4) (5) (6) (7) (8) (9) (10) (11) (12) (13) (14) (15) (16) (17) (18) (19) (20) (21) (22) (23) (24) (25) (26) (27) (28) (29) (30) (31) (32) (33) (34) (35) (36) (37) (38) (39) (40) (41) (42) (43) (44) (45) (46) (47) (48) (49) (50) (51) (52) (53) (54) (55) (56) (57) (58) (59) (60) (61) (62) (63) (64) (65) (66) (67) (68) (69) (70) (71) (72) (73) (74) (75) (76) (77) (78) (79) (80) (81) (82) (83) (84) (85) (86) (87) (88) (89) (90) (91) (92) (93) (94) (95) (96) (97) (98) (99) (100)

24.5.90

EMG 5 W (2)

small WC waste ware body sherds

4 m frags crack ware vessels

1 base frag c/w bowl / jar

1 m frag semi coarse 'straight-sided' bowl.

1 m frag notched rim bowl.

body sherd cooking ware.

Thursday 24 May 1990

Weather: hazy at first but sunny and very still

Workers North: Younis, Younis, Khalid, Jumai, Anouma

Halima, Arize, Ariza Saloum (8)

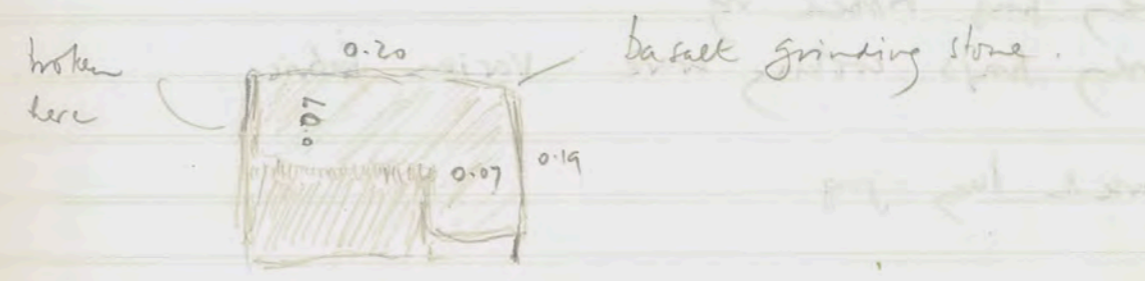
South: Hussein, Mohamed, Hamed Aisa, Hamed Saloum,

Oofa, Hussein Abdullah, Saleh, Monsa (8)

EMG 5 W + N

This morning we are still clearing soil mixed with limestone chips loosened by the removal of the dangerous large wall blocks of tumble. The soil comes from the very beginning (at the E) of our trench extension designated EMG 5 W. There is still more large tumble in the surface of EMG 5 W.

Note that a fragment of worked basalt that came from this area a few days ago resembles the more workable of the basalt stones photographed yesterday in MW's trench.



I call the stratum today (2) because it lies immediately below the tumble.

7:45 am. The masonry on each side of the entrance passage (dromos?)

is not given a careful or attractive finish: merely workmanlike

10:45 large blocks of tumble being removed; proceeding a little

more into the dromos. The hard-packed floor continues,

sloping from E to W.

24.5.90

SMG 2

We continued, working towards the S. The light brown soil is full of largeish blocks of tuff. This tuff is the only thing that distinguishes from the soil that lies beneath that darkened by root-action.

I designate today's deposit stratum (2)

9:30 am In a concerted effort we shift all the rubble that lay around the trench

10 am We continue with (2). At the W side of the trench under the larger stones of tuff the light brown soil is more mixed with the white of crumbled limestone.

So far the only feature in the trench is the line of blocks at the N. These were visible above the surface before commencement of excavate and should now be seen as the continuation of the S wall of the S tower.

24.5.90

SMG 2 (2)

medium-large wt coarse ware frag

6 base frags coarse ware bowls/jars

5 rim frags coarse ware jars

3 handle frags.

1 rim frag flaring rim ? firm plate

1 large rim frag out-turned ledge rim.

1 rim frag gray ware

2 base frags rg bowls

4 rim frags out-turned rim

10 rim frags echinus bowls.

3 rim frags ting bowls.

3 rim frags v. fine fabric smooth rim bowl.

1 base frag large rg plate

3 body frags rg.

1 body frag ribbed rg.

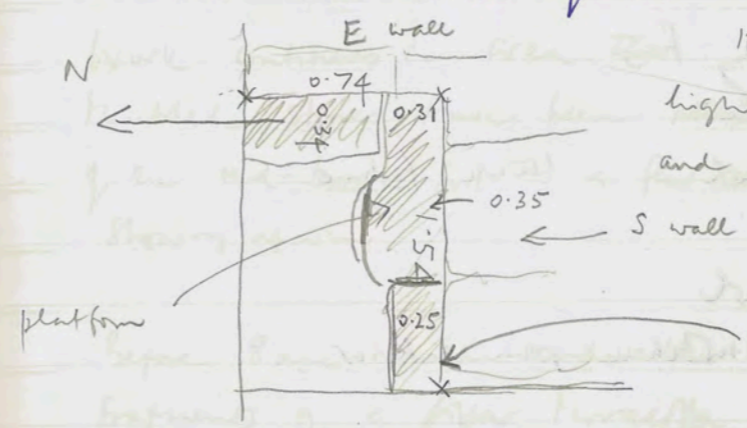
15 body frags cooking ware Various fabrics

1 coarse ware jug

24.5.90

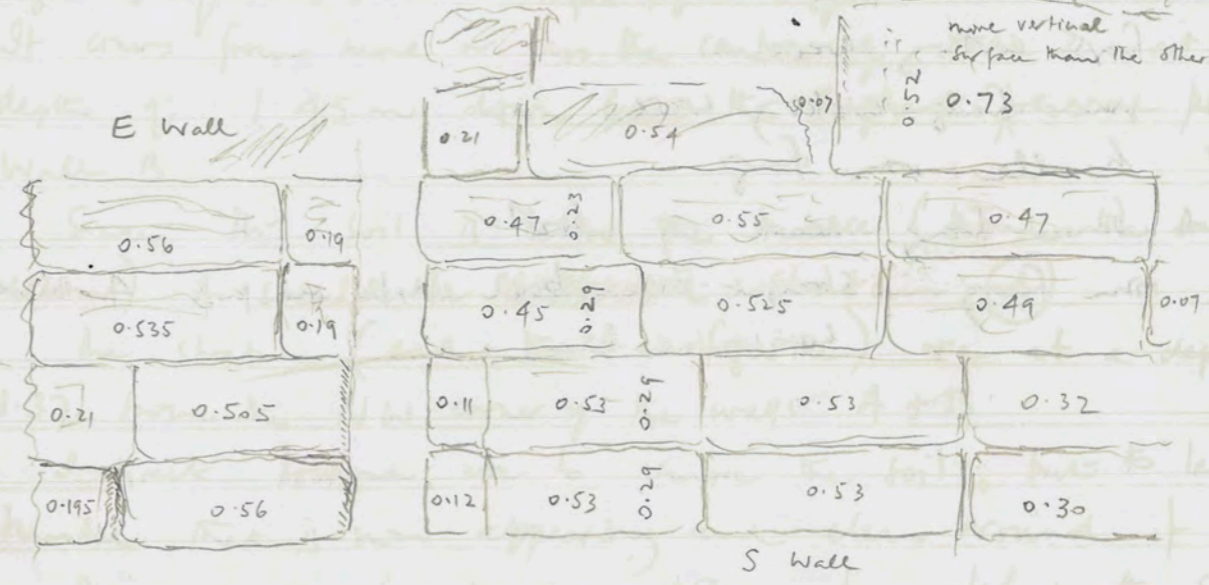
EMG 4 N

The SE corner of the interior space



The bottom four courses are 1.008 + 1.09 m high; above these the stones are different sizes and different characters

The greatest preserved height of the wall is 1.82 m



Above these four courses decayed limestone block light brown soil; large blocks of rubble

There are drafted edges, more or less well preserved at each vertical side of the limestone blocks

The blocks have a roughly vertical face, but are neither smooth nor 'cushioned'

Above the upper central block of the S wall there is approximately 2 m depth of decayed limestone blocks

From the W edge of the trench it is approximately 3.10 m down to the 'shelf'

24.5.90

391/3 (4)

small wt coarse ware body frags

1 rim frag coarse ware jar

1 rim frag gray ware bowl white fabric

5 rim frags echinus bowls

1 rim frag matched rim bowl

1 rim frag semi-coarse matched rim interior.

1 small tile frag

4 frags cooking ware

1 rim frag cooking ware

1 handle + rim frag

1 base frag neck of bowl

1 rim frag straight-sided bowl ext: red part A impressed horizontal lines

Ston

391/3

24.5.90

Jaume etc all present (6)

Work continues in area Z: a rich brown soil. Many large tumbled stones have been removed and now there is a depth of the red-brown soil - a few centimetres - with larger blocks of rubble showing again.

Before 8 am, and under the heavy stratum of rubble several fragments of a *terra cotta* figurine of a rider on horseback. It comes from more or less the centre of area Z at a depth of 1.45 m down from the highest preserved point of Wall B.

Since this soil is below the rubble (though the same colour) it should be designated stratum (4)

the stratum (and the t-c figurine) are at a depth of 1.37 from the NW corner of the walls A+B

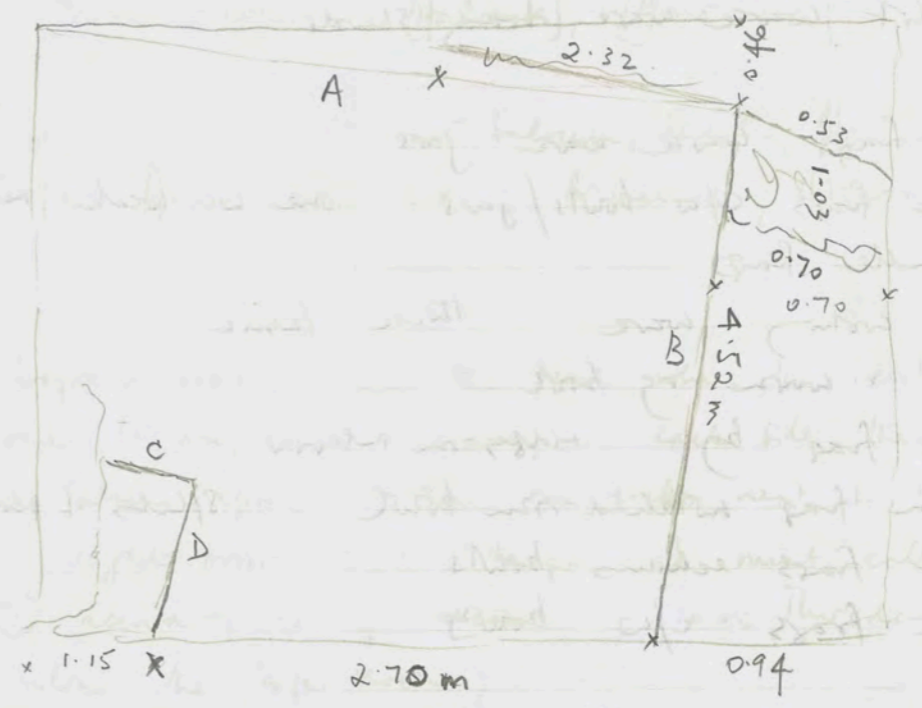
I direct Jaume etc to remove the soil; but to leave the rubble that is now appearing and clear around it.

There are a few pieces of pottery from below the stones recently removed: maybe 30 or so. This is not a great deal

Handwritten notes on page 12, including a circled 'A' and various illegible text.

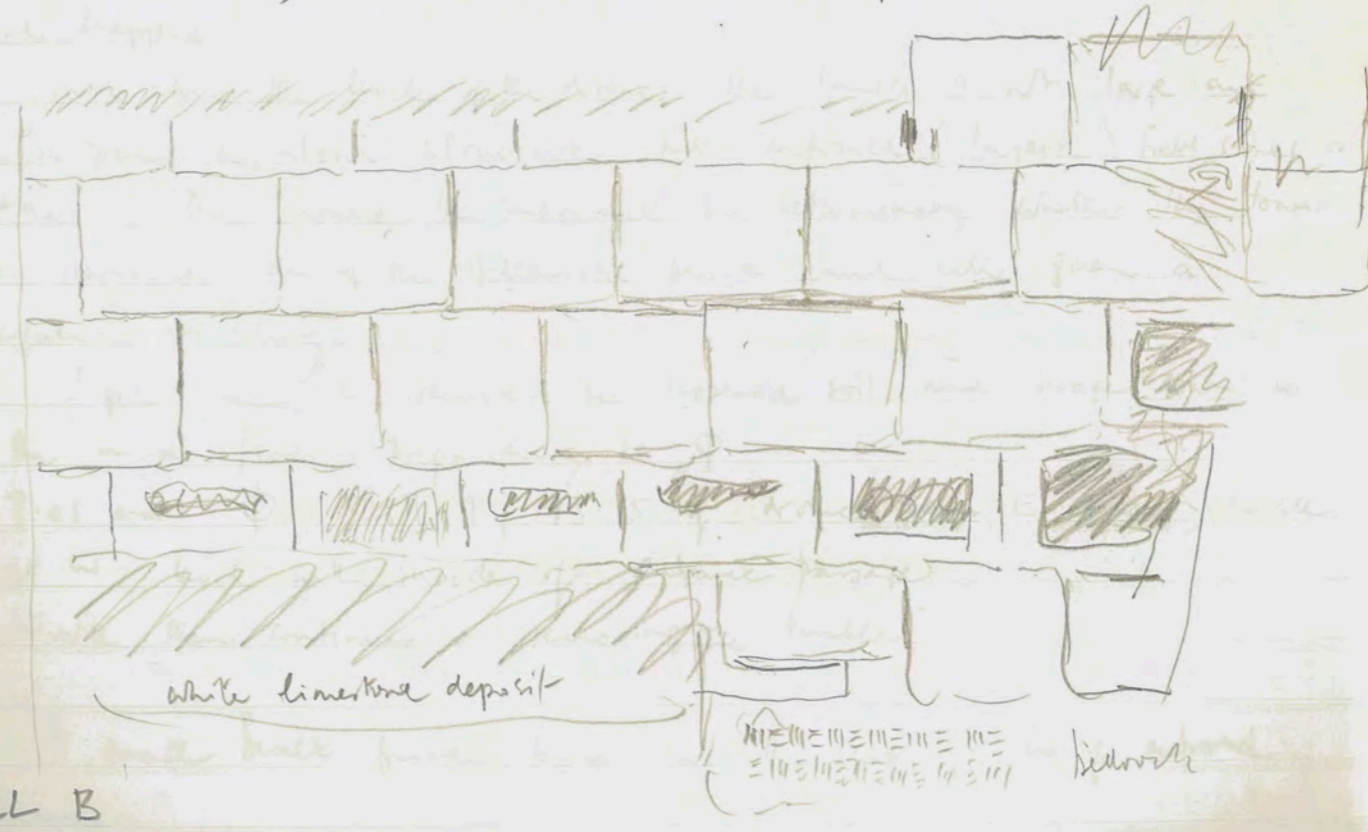
24.5.90

EMG 4 Z
N ←



total = 4.80 !!!

According to my production of the line A the wall should continue within the trench until the corner. Because of large fumble at the bundle Wall A can only be measured for a distance of 2.32 m.



WALL B

Handwritten notes at the bottom of page 32, including a circled 'A' and various illegible text.

26.5.90

EMG 5 W (2)

Small lot work were bag sherds

3 rim frags work were jars

3 base frags c/w bowls/jars one w. weak red glaze

2 handle frags

1 frag cooking ware thick fabric

3 frags r. worn rg bowl

1 rim frag by ridges on interior

1 rim frag notched-rim bowl splashes of paint int + ext.

2 rim frags echinus bowls

2 rim frags c/w bowls

Saturday 26 May 1990

Weather Sunny steady breeze from NW, prom. its lot

Workers North: Younis, [Younis] Khaleed, Junad, Ariza, Ariza Saloum, [Halima], [Amouna] (8)

South: Hussan, Hamad Saloum, Saleh, Ahmad Aida, Oufa, Hussein Abdullal, Mohamed, Mousa (8)

E

EMG 5 W

Work progress today about the point where the entrance passage showed come to an end. Certainly on each side there is a a very large block which appear to have no blocks next to them or the w. The soil is light brown silt, therefore I must call this deposit stratum (2) according to my decision of last Thursday. It is a stratum below the large blocks of tumbled

The dromos slopes upwards still to the W. It will be interesting to see what happens to it at the end of the passage way. This is an aspect I didn't take into account in determining on a small extension for EMG 5 W. Perhaps I have given enough room to see what happens.

Just above the level of the dromos the tumbled is not large but blocks from the tower structure, but unformed (large) field stones or rubble. This should be important for determining whether the tower was destroyed during the Hellenistic period and later given a significant rebuilding.

I get them to remove the loosened soil and scrape down to the hard floor, preparatory to Φ

7.05 am Φ Roll 9, 13-15 of dromos from E showing rubble at W level with inside of entrance passage

Work then continues on removing the rubble

A small small fragment found above the floor at W of entrance passage

* 8.45 am - a small bronze coin from just above the hard packed floor of the dromos + just to W of end of dromos. 90.525

26.5.90

26.5.90

1. 15.5.90 2. 20.5.90 3. 25.5.90 4. 30.5.90 5. 5.6.90 6. 10.6.90 7. 15.6.90 8. 20.6.90 9. 25.6.90 10. 30.6.90 11. 5.7.90 12. 10.7.90 13. 15.7.90 14. 20.7.90 15. 25.7.90 16. 30.7.90 17. 5.8.90 18. 10.8.90 19. 15.8.90 20. 20.8.90 21. 25.8.90 22. 30.8.90 23. 5.9.90 24. 10.9.90 25. 15.9.90 26. 20.9.90 27. 25.9.90 28. 30.9.90 29. 5.10.90 30. 10.10.90 31. 15.10.90 32. 20.10.90 33. 25.10.90 34. 30.10.90 35. 5.11.90 36. 10.11.90 37. 15.11.90 38. 20.11.90 39. 25.11.90 40. 30.11.90 41. 5.12.90 42. 10.12.90 43. 15.12.90 44. 20.12.90 45. 25.12.90 46. 30.12.90 47. 5.1.91 48. 10.1.91 49. 15.1.91 50. 20.1.91 51. 25.1.91 52. 30.1.91 53. 5.2.91 54. 10.2.91 55. 15.2.91 56. 20.2.91 57. 25.2.91 58. 30.2.91 59. 5.3.91 60. 10.3.91 61. 15.3.91 62. 20.3.91 63. 25.3.91 64. 30.3.91 65. 5.4.91 66. 10.4.91 67. 15.4.91 68. 20.4.91 69. 25.4.91 70. 30.4.91 71. 5.5.91 72. 10.5.91 73. 15.5.91 74. 20.5.91 75. 25.5.91 76. 30.5.91 77. 5.6.91 78. 10.6.91 79. 15.6.91 80. 20.6.91 81. 25.6.91 82. 30.6.91 83. 5.7.91 84. 10.7.91 85. 15.7.91 86. 20.7.91 87. 25.7.91 88. 30.7.91 89. 5.8.91 90. 10.8.91 91. 15.8.91 92. 20.8.91 93. 25.8.91 94. 30.8.91 95. 5.9.91 96. 10.9.91 97. 15.9.91 98. 20.9.91 99. 25.9.91 100. 30.9.91

2. 20.5.90 3. 25.5.90 4. 30.5.90 5. 5.6.90 6. 10.6.90 7. 15.6.90 8. 20.6.90 9. 25.6.90 10. 30.6.90 11. 5.7.90 12. 10.7.90 13. 15.7.90 14. 20.7.90 15. 25.7.90 16. 30.7.90 17. 5.8.90 18. 10.8.90 19. 15.8.90 20. 20.8.90 21. 25.8.90 22. 30.8.90 23. 5.9.90 24. 10.9.90 25. 15.9.90 26. 20.9.90 27. 25.9.90 28. 30.9.90 29. 5.10.90 30. 10.10.90 31. 15.10.90 32. 20.10.90 33. 25.10.90 34. 30.10.90 35. 5.11.90 36. 10.11.90 37. 15.11.90 38. 20.11.90 39. 25.11.90 40. 30.11.90 41. 5.12.90 42. 10.12.90 43. 15.12.90 44. 20.12.90 45. 25.12.90 46. 30.12.90 47. 5.1.91 48. 10.1.91 49. 15.1.91 50. 20.1.91 51. 25.1.91 52. 30.1.91 53. 5.2.91 54. 10.2.91 55. 15.2.91 56. 20.2.91 57. 25.2.91 58. 30.2.91 59. 5.3.91 60. 10.3.91 61. 15.3.91 62. 20.3.91 63. 25.3.91 64. 30.3.91 65. 5.4.91 66. 10.4.91 67. 15.4.91 68. 20.4.91 69. 25.4.91 70. 30.4.91 71. 5.5.91 72. 10.5.91 73. 15.5.91 74. 20.5.91 75. 25.5.91 76. 30.5.91 77. 5.6.91 78. 10.6.91 79. 15.6.91 80. 20.6.91 81. 25.6.91 82. 30.6.91 83. 5.7.91 84. 10.7.91 85. 15.7.91 86. 20.7.91 87. 25.7.91 88. 30.7.91 89. 5.8.91 90. 10.8.91 91. 15.8.91 92. 20.8.91 93. 25.8.91 94. 30.8.91 95. 5.9.91 96. 10.9.91 97. 15.9.91 98. 20.9.91 99. 25.9.91 100. 30.9.91

- 1. 15.5.90
- 2. 20.5.90
- 3. 25.5.90
- 4. 30.5.90
- 5. 5.6.90
- 6. 10.6.90
- 7. 15.6.90
- 8. 20.6.90
- 9. 25.6.90
- 10. 30.6.90
- 11. 5.7.90
- 12. 10.7.90
- 13. 15.7.90
- 14. 20.7.90
- 15. 25.7.90
- 16. 30.7.90
- 17. 5.8.90
- 18. 10.8.90
- 19. 15.8.90
- 20. 20.8.90
- 21. 25.8.90
- 22. 30.8.90
- 23. 5.9.90
- 24. 10.9.90
- 25. 15.9.90
- 26. 20.9.90
- 27. 25.9.90
- 28. 30.9.90
- 29. 5.10.90
- 30. 10.10.90
- 31. 15.10.90
- 32. 20.10.90
- 33. 25.10.90
- 34. 30.10.90
- 35. 5.11.90
- 36. 10.11.90
- 37. 15.11.90
- 38. 20.11.90
- 39. 25.11.90
- 40. 30.11.90
- 41. 5.12.90
- 42. 10.12.90
- 43. 15.12.90
- 44. 20.12.90
- 45. 25.12.90
- 46. 30.12.90
- 47. 5.1.91
- 48. 10.1.91
- 49. 15.1.91
- 50. 20.1.91
- 51. 25.1.91
- 52. 30.1.91
- 53. 5.2.91
- 54. 10.2.91
- 55. 15.2.91
- 56. 20.2.91
- 57. 25.2.91
- 58. 30.2.91
- 59. 5.3.91
- 60. 10.3.91
- 61. 15.3.91
- 62. 20.3.91
- 63. 25.3.91
- 64. 30.3.91
- 65. 5.4.91
- 66. 10.4.91
- 67. 15.4.91
- 68. 20.4.91
- 69. 25.4.91
- 70. 30.4.91
- 71. 5.5.91
- 72. 10.5.91
- 73. 15.5.91
- 74. 20.5.91
- 75. 25.5.91
- 76. 30.5.91
- 77. 5.6.91
- 78. 10.6.91
- 79. 15.6.91
- 80. 20.6.91
- 81. 25.6.91
- 82. 30.6.91
- 83. 5.7.91
- 84. 10.7.91
- 85. 15.7.91
- 86. 20.7.91
- 87. 25.7.91
- 88. 30.7.91
- 89. 5.8.91
- 90. 10.8.91
- 91. 15.8.91
- 92. 20.8.91
- 93. 25.8.91
- 94. 30.8.91
- 95. 5.9.91
- 96. 10.9.91
- 97. 15.9.91
- 98. 20.9.91
- 99. 25.9.91
- 100. 30.9.91

26.5.90

391/3

7.30 am ϕ of 2nd stratum of tumbled c. 1.20m down from NW corner where walls meet. There is large tumbled at the NE not so much at SE corner of this area 2 where we are excavating.

It seems apparent that there is no continuous wall at the W. The question is how to go about the next excavation. It would be good to work in the SW corner of the trench and remove the 1m depth until we find the wall at the N; but the floor of the trench is now very uneven with the cleaned-down tumbled. Therefore I prefer that the tumbled be removed first since this should be, to judge by 392/9 not far above a hard-packed floor.

We therefore continue in this manner.

The tumbled is stratum (5), therefore no pitting. The soil below the tumbled is stratum (6).

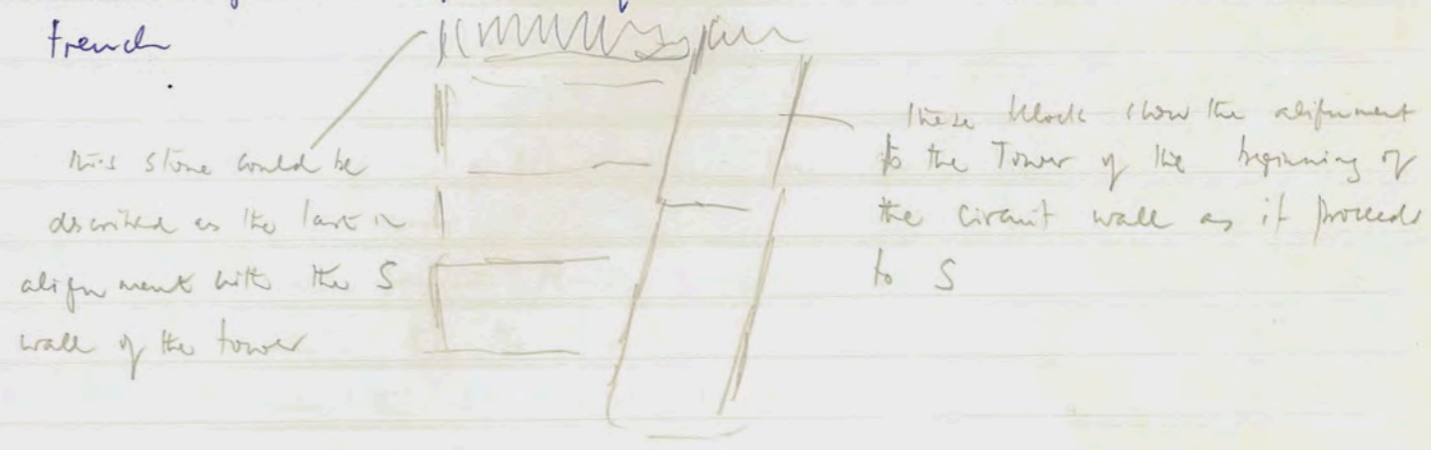
Bunn. Jack opens 333/8 his spirit is high; his expectations of success are overweening; I can will remove all sharp vertical slates in case if all comes to naught in accordance with will of the Fates.

26.5.90

SMG 2 10.45 a

Though the soil has not been completely levelled out at the SE corner of the trench, we began another pass at the SW corner. The deposit is a light brown soil mixed with a few small chips of limestone; no real sign here at the S of the trend of powdered limestone. Because it is a new pass and because it lies below the level of the recently removed large tub, I designate this stratum (3) and keep the pit separate from this being checked in the SE corner of the trench.

Concerning SMG 1 (1980), I presume comments were made on rather diagonal alignment of blocks in the very SE corner of that trench.



Monday 27 June 26.5.90

WMC 1 sunny, clear, diff breeze from NW at 10.30

I note here that the rubble wall along the E end of the
Trench is built not just on the ashlar blocks of the tower
construction beneath it, but on a substantial layer of
powdered/crushed limestone which lies above the ashlar blocks.
This thick deposit of powdered limestone continues in the N face

with courses on remaining level surface of rubble
deposits of large blocks of limestone & fragments of
other stone, the kind of foundation deposit found beneath
the N side of the tower. It is suggested that the rubble
found under the tower is the same as the rubble found
N. boundary of the trench. It is suggested that the rubble
is a complete operation.

1.1 on small piece of rubble found just W of trench wall
hard-packed floor.

The hard-packed floor extends as far as the W boundary
of the trench. At the NW corner are concentrations of debris
the soil from the N of the trench extension to expose as well
as possible of the door jamb.

See for long pieces of charcoal on the floor level

1.4 on Φ line R11.9 of trench near tower 206/5
as opposed to also 206/1 to the further side is with
the rubble which he seemed to reveal the E face of the wall
discovered in 206/4 (1989). The E face is not at all found
but then does not seem to be a door in his room. For
R11.9 doorway for MW (3 holes)

Φ of floor N and S side SW on trench
grading steps

26.5.90

27 June 26.5.90

27 June 26.5.90
I note here that the rubble wall along the E end of the
Trench is built not just on the ashlar blocks of the tower
construction beneath it, but on a substantial layer of
powdered/crushed limestone which lies above the ashlar blocks.
This thick deposit of powdered limestone continues in the N face
with courses on remaining level surface of rubble
deposits of large blocks of limestone & fragments of
other stone, the kind of foundation deposit found beneath
the N side of the tower. It is suggested that the rubble
found under the tower is the same as the rubble found
N. boundary of the trench. It is suggested that the rubble
is a complete operation.

1.1 on small piece of rubble found just W of trench wall
hard-packed floor.



See for long pieces of charcoal on the floor level

1.4 on Φ line R11.9 of trench near tower 206/5
as opposed to also 206/1 to the further side is with
the rubble which he seemed to reveal the E face of the wall
discovered in 206/4 (1989). The E face is not at all found
but then does not seem to be a door in his room. For
R11.9 doorway for MW (3 holes)

Φ of floor N and S side SW on trench
grading steps

Sunday 27 May 1990

Weather: sunny, clear; stiff breeze from NW at first
 Workers: North; Younis, Younis, Halima, Chalid, Jumaa, Amroun, Aziza, Aziza Saloum (8)
 South: Hussein, Hamad Asa, Hamad Saloum, Mohamed, Saleh, Hussein Abdullahu, Mousa, Dofah (8)

EMG 5 W (2)

Work continues on removing loosened soil and small stones after dislodging of large blocks of rubble. At the S of the entrance into the interior space, the blocks of rubble are perhaps too large to be removed but at the N we should be able to clear the soil to the edge of the trench and reveal the format of the doorjamb etc.; but the N boundary of the trench does not extend far enough N to make this a comfortable operation.

11 am small piece of black glass from just W of entrance on the hard-packed floor.

The hard packed floor proceeds as far as the W boundary of the trench. At the moment we are concentrating on clearing the soil from the N of this W extension to expose as well as possible of the doorjamb
 There are tiny spots of charcoal on the floor level

11.45 am ϕ end Roll 9 of Mark's new trench 206/5 as pegged out also 206/1 in its finished state i.e. with the vault at the W removed to reveal the E face of the wall discovered in 206/4 (1989). The E face is not at all firm but there does not seem to be a door in this room. For further comments see MW (I hope)

ϕ of floor N and S and SW on basalt grouting stones.

27.5.90

EMG 5 W (2)

small like crack were body frags

3 other frags crack were vessels

1 rim frag gray ware bowl

1 rim frag green ware

1 rim frag echinus bowl

3 body frags looking ware

1 burnt stone frag

3 base frags of bowls

1 rim frag white red glaze

body frags.

27.5.90

SM 4 2 (3) bag 2

medium wt crack ware body sherds

5 base frags crack ware bowls

1 base frag gray ware rounded base

5 rim frags echinus bowls

6 body frags looking ware

4 rim frags crack ware bowls

3 rim frags flaring rim bowls

one body frag w. handle root

body frags with paint

1 rim frag of bowl fine fabric

body frag towards base of rounded bowl

1 rim frag by

hw.?

27.5.90 SM 4 2 (3) bag 1

medium wt crack ware body sherds

9 base frags crack ware bowls/jars

7 rim frags c/w jars

1 handle frag

16 body frags looking ware 1 handle frag. looking ware

10 rim frags echinus bowls

1 rim frag flaring-rim bowl

1 rim frag orange bands exterior

1 rim frag of bowl v. fine fabric

body frags of

1 body frag green glaze

27.5.90

SM 4 2

Continuing work, we move from W to E across the trench, in Stratum (3). The trench is currently clear of obstacles or rubble and the soil is light brown.

The pass is at a depth of 0.67 down from topmost preserved course on W and 0.88 down from topmost preserved course on N. At the N the second course down is also decayed at its outer surface.

The rubble wall at the S has at least 6 preserved courses. Towards the E corner there is a decayed limestone block (it would seem) and W of it traces of masonry - quite a deep block actually - on the W form 3 courses of the rubble wall (as it has been uncovered to date).

6.55 am against the Tower wall at the N, 3/4 of a day loomweight

Some rough field stones as rubble in the S part of trench. These would probably come from the rubble wall in the S bank of the trench.

a complete loomweight from the SW corner of the trench.

10 am. We begin another pass this time working from E to W a few centimetres below the present surface, at least at the N of the trench near the tower wall, is a marked white limestone deposit. We concentrate for the moment on removing the light brown soil.

10.45 an iron dagger in 3 (newly broken) pieces: the largest does not seem to fit we are looking for another piece.

beneath the light brown soil, in the centre of the trench seems to be a hard-packed reddish Stratum. Perhaps this is a floor - on which the dagger was found - but it is very high: perhaps associated with the rubble wall at the S.

27.5.90 at 2.58

SMG 2 (1) by 2

Working still in Stratum (6) but by 12 noon bedrock is revealed at the W near the wall.

The wall is indeed a wall as we discover at a depth a little above bedrock. Above that the wall has substantially crumbled (in the S part of the trench) but the 2 or 3 courses above bedrock are firm.

Still clearing away the loose material in the trench. After clearing to bedrock in Area 2, we shall move to the N though the space is limited. The deposit in the trench block of material must be removed when it is too dangerous for life and health to leave on it. This will include the trench wall and any material and lead to the use of a soil removed.

6.45 am the drain for the furnace for the drains to be cut and to be cut on N of the N side of the drains.

6.50 am ϕ of the drain from S (NMG 1)
R 10, 1 -
with the water in shadow

8.15 am 333/8
 ϕ R 10, 7 - ϕ cleared to area from S, N & W.

ϕ R 10, 12-13 ϕ newly laid on trench - W of 364/8
= 363/2

By 11 am the trench is bedrock complete. It has hindered the progress of the work and in particular of the trench floor but can hinder towards morning.

Attention - we clear all the stone accumulated at the bottom of the trench - to find the S.W. corner of the trench space.

391/3

Monday 27.5.90

Working still in Stratum (6) but by 12 noon bedrock is revealed at the W near the wall.

The wall is indeed a wall as we discover at a depth a little above bedrock. Above that the wall has substantially crumbled (in the S part of the trench) but the 2 or 3 courses above bedrock are firm.

Still clearing away the loose material in the trench. After clearing to bedrock in Area 2, we shall move to the N though the space is limited. The deposit in the trench block of material must be removed when it is too dangerous for life and health to leave on it. This will include the trench wall and any material and lead to the use of a soil removed.

6.45 am the drain for the furnace for the drains to be cut and to be cut on N of the N side of the drains.

6.50 am ϕ of the drain from S (NMG 1)
R 10, 1 -
with the water in shadow

8.15 am 333/8
 ϕ R 10, 7 - ϕ cleared to area from S, N & W.

ϕ R 10, 12-13 ϕ newly laid on trench - W of 364/8
= 363/2

By 11 am the trench is bedrock complete. It has hindered the progress of the work and in particular of the trench floor but can hinder towards morning.

Attention - we clear all the stone accumulated at the bottom of the trench - to find the S.W. corner of the trench space.

28.5.90

EMG 5 W (2)

small W work were being sheds

1 m from E/W jar.

3 m from E/W jar.

5 m from E/W jar.

1 bag to figure out.

Monday 28 May 1990

Weather, sunny strong breeze from NW at first.

Workers North: Khalid, Amour, Tameer, Younis, Younis, Halima, Aziza, Aziza Saboun (8)

South: Mhamel, Hussein, Hamad Afa, Hamad Saboun, Saleh, Hussein Abdullah, Oofal, Mousa (8)

EMG 5 W (2)

Still clear away the loose packed soil. The trench walls are very uneven as a result of the large blocks of rubble lying all round. In the N bank, level with the W end of the drains another sizeable block of rubble must be removed since it is too dangerous for life and limbs to leave as it is. This will make the trench wall even more uneven and lead to the need for more soil removal.

6.45 am the hard surface found in the drains is just now seen to continue N of the N side of the drains

6.50 am ϕ of the drain from S (NMC-1) R 10, 1- with the whole in shadow.

8.15 am 333/8 ϕ R 10, 7- of cleaned rubble from S, N+W

ϕ R 10, 12-13 of newly laid out trench W of 364/8 = 363/2

By 11 am. the trench is declared completed. It does however need a thorough sweep down of the stones and in particular of the hard-packed floor. This can be done tomorrow morning.

Meantime we clear all the stones accumulated W of NMC-1 in preparation for a trench to find the SW corner of the interior space

28.5.90

SMG 2 (3)

medium wt c/w body shards

6 base frags c/w bowls/jars

6 body frags cooking ware

1 rim + handle frag cooking ware.

2 rim frags notched rim bowls

1 body frag green glaze

1 rim frag gray ware flaring rim

1 rim frag rim gray ware

11 rim frags everted bowls

2 rim frags c/w jars

2 rim frags semi coarse

3 rim frags rg (white) samurs (2 joinings)

1 base frag fire plate

body frag

29.5.90

SMG 2 (3)

medium wt c/w body shards

3 rim frags c/w jars

2 amphora toe frags

9 base frags c/w bowls/jars

1 base frag fire plate

17 rim frags samurs Impressed line at interior rim

1 base frag large rg plate

1 body frag c/w handle root

3 tile frags

3 rim frags + several body frags: pike on interior

body frags cooking ware

28.5.90

SMG 2

We begin a pass today starting from the W against the circuit wall. The soil is light brown and therefore must still be (3).

At the N against the Tower wall we are just short of 1 m in depth.

7.05 am. a small hard round spindle wheel from against the circuit wall at top of second preserved course.

12.30 Against the Tower Wall at N of trench we are down to the W form of the second uppermost preserved course. We are beginning to touch on a white powdered limestone stratum across the trench; but there is still some brown soil to be removed. A full zerbit of pottery has been fathered this morning - this will have to go into two bags.

Tuesday 29 28.5.90

391/3
 Quietly among soil above bedrock. The big D. claimed that yesterday that the level we were at was not a floor. It is true there was little pottery - as was true I think of 392/9 (1989-90). I think case we have not found a floor, though there was a very hard floor in 392/9.

We have just pegged out a new trench 363/2 to the W of 364/8. I note that 363/5 came out of the latter.

In 391/3 we can only work in Area X and that very briefly to see what the large in situ block is all about. It does however seem to be a wall block ~~block~~ (the wall aligned NS) lying almost the wall - instead of the more usual field stones which make up the outside walls A and B.

178/1 Radi

12 noon ϕ R 10 14-20

γ many loomweights in situ against an EW wall! S of the EW wall. They lie on a good floor. They may have already been taken up. The floor is not yet completed so this is working ϕ .

29.5.90

NMG 2 ①

large lot of large coarse ware body frags including frags of shoulder

1 enormous handle frag.

1 small handle frag

6 other handle frags + handle-neck frags

2 base frags c/w bowls or jars

1 rim frag coarse ware jar

1 rim frag straight-neck semi-coarse bowl w.

dull brown glaze exterior + interior

29.5.90

NMG 2 ①

medium-large lot coarse ware body sherds

3 handle frags

1 amphora toe frag.

4 rim frags c/w jars

2 rim frags eckinus bowl

2 base frags c/w bowls/jars

2 body frags food vj

29.5.90

NMG 2 ① bag 1

medium lot coarse ware body sherds

1 base frag c/w bowl/jar

2 large handle frags

2 rim frags c/w jars

1 rim frag eckinus bowl dull red glaze/pink

1 small frag strap handle

2 body frags cooking ware

1 rim frag small 'bottle'

Tuesday 29 May 1990

Weather Sunny. still promising exceedingly hot (like yesterday)

Workers North: Younis, Younis, Amouna, Aziza, Aziza Saboun, Jum'aa, Khalid, Halima (8)
South: Mhamed, Hussein, Mousa, Hamad Aisa, Hamad Saboun, Saleh, Hussein Abdullal, Oofa (8)

Begin by measuring out NMG 2 (4m x 3m)

4m NS 3m EW: leaving a metre bank between the excavated square of NMG 1 and reaching down as far as (almost) Jack's trench of 1989 which gave the SW corner of the North Tower.

Workers continue cleaning of area and also of upper surface of NMG 1

Φ of NMG 2 from S and N Roll 10, 21-24.

7:10 am work begins on NMG 2

7:45 am NMG 2

There is already a full rubbish of often very large frags of coarse ware jars, including one enormous vertical handle.

29.5.90

SMG 2 (3)

small lot of cork ware frag sherds

1 base frag cork ware jar/bowl

1 frag frag painted red bands int. + ext

2 joining frags one with finished in powder.

3 frags cooking ware.

29.5.90

SMG 2 (4)

small lot c/w frag sherds

2 base frags c/w bowls/jars

1 rim frag c/w jar

1 handle rock frag.

One frag

29.5.90

NMG 2 (1) bag 3

medium wt large c/w frag sherds

2 handle frags

1 rim frag c/w jar

29.5.90

NMG 2 (1)

medium wt large c/w frag sherd

2 handle frags

6 rim frags c/w jars

2 base frags c/w jars

Other frag frags

29.5.90

SMG 2

We are now working in a deposit of crushed limestone with only a little light-brown soil.

This stratum is designated (4)

7.15 am another small hard round loomweight boundary between (3) and (4)

At the S, the rubble wall is now approx 1.64 m deep.

This is unusual for a rubble wall near the gate, though I guess the cornered wall in EMG 1 is built on, or close to, bedrock.

7.30 we are completing this pass near the S end of the trench.

In the SW corner of the trench there is quite a deposit of the light-brown left. The pitting is kept separate + designated (3)

The blocks of the circuit wall have prominent bosses or cushions very like the lower wall blocks of the S wall of the Tower in EMG 4.

The stratigraphy of the E wall of the trench shows the beginning of the powdered white limestone stratum commencing about 1 m from the Tower wall at the N. here is a small streak of limestone above this.

At the S it begins to look as though the rubble wall is built on the powdered white limestone. Perhaps this means it was constructed almost immediately after the completion of the building of the fortifications at this point.

There is a bundle of field stone on the light-brown soil at the W near the circuit wall.

7.40 we begin again in the NE corner of trench. The light-brown soil is mixed with powdered limestone.

8.45 5 clay loomweights from soil deposit (3) in SW corner of trench between rubble wall and circuit wall. At a depth of 1.7 m in the inner N. W. walls

29.5.90

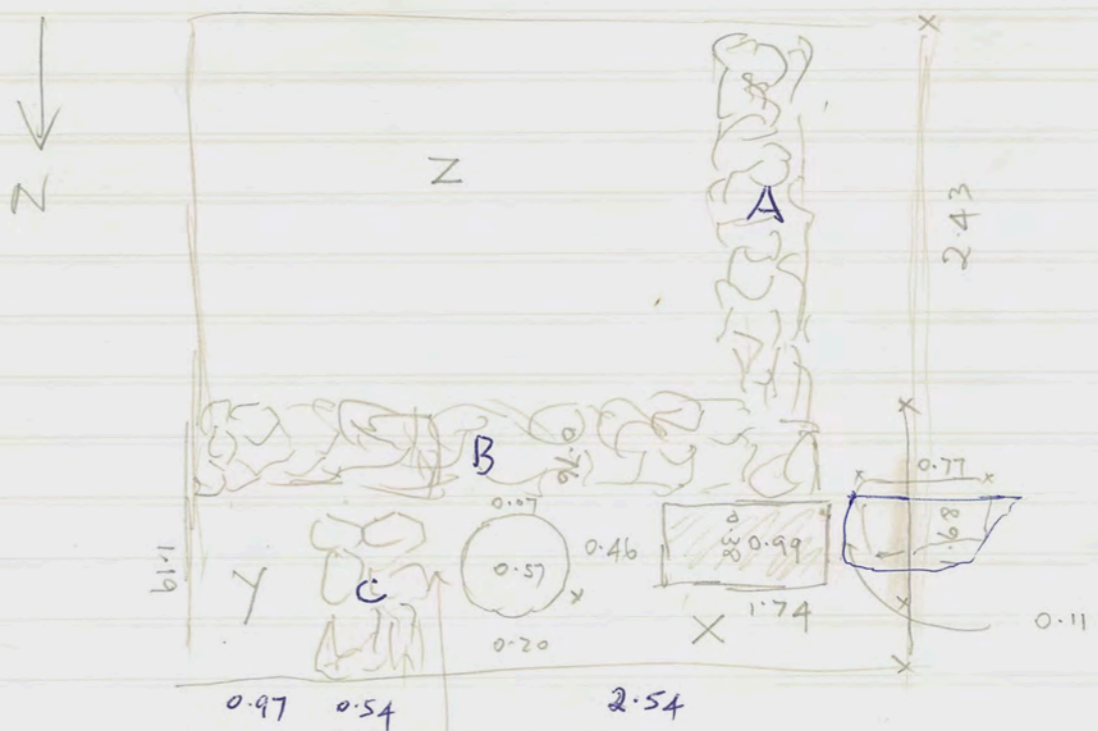
30/3 Douner + 5 present.

8.15 am

Work in the NW corner of the trench (= Area X of sketch of 23.5.90) has revealed alt tanour close to wall C. There are several burnt bones from inside the tanour which are kept separate. There is also a small flag of bronze pin from just to W of tanour.

The large block at the W has nothing (it seems) to the N of it; perhaps it is part of a doorway.

The tanour nestles in the corner of the room and is very close to the soil surface. In wall C there is only one full course of stones above the tanour. It lies 0.43 m down from the soil surface.



gray kil in tanour + round it

0.12 wall of tanour is 0.07-0.08 m wide

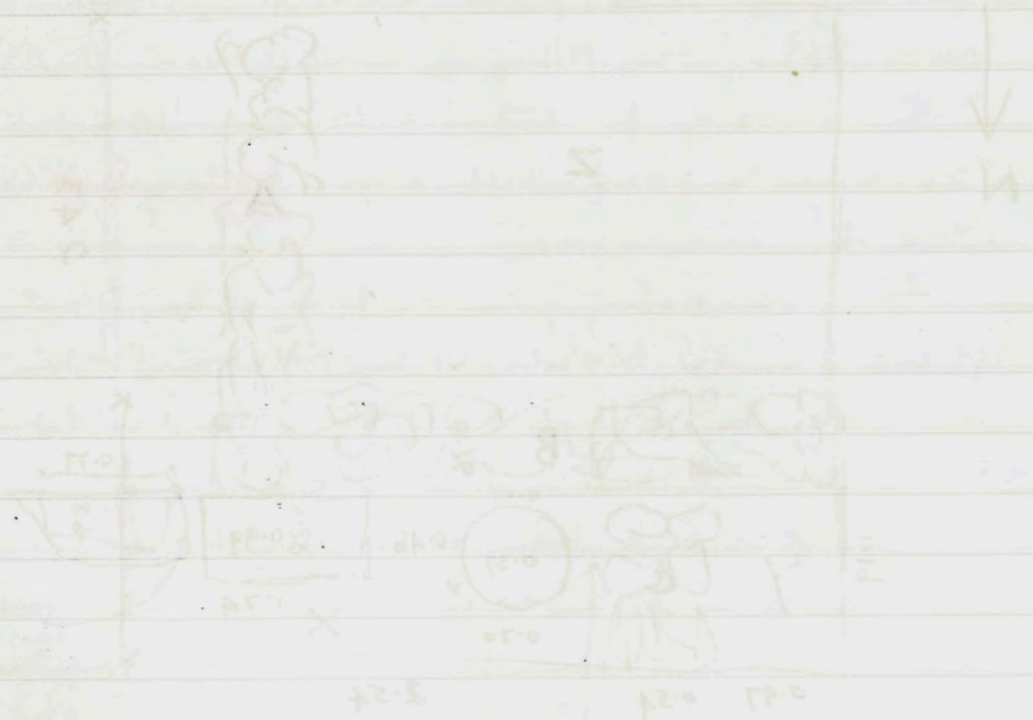
19. 2. 90

3/12 8:12 am

Block in the NW corner of the trench (about 10 x 10 ft) is a mass of brown soil. It is very hard and contains many small stones. The soil is very dry and has a crumbly texture. It is very different from the soil in the rest of the trench.

The top of the block is very hard and contains many small stones. It is very different from the soil in the rest of the trench.

The trench is very deep and contains many small stones. It is very different from the soil in the rest of the trench.



100 120 150

100 120 150

29. 5. 90

5/12 2

10363/2 Particularly during the night and early morning large chunks of
 brickwork begins on top soil of this trench. The brickwork is
 All aspects of this deposit reflect the construction of wall and tower.
 We are now cutting through about five courses of brickwork. I
 shall have to cut out my hole (1) to go down to
 (2) to stop excavating under ground that I have fulfilled
 aim (3) to avoid the trench for excavation.

Wednesday 30 May 29.5.90

SM4 2

10.55 am. Particularly along the circuit wall, numerous large chunks of limestone are coming to light, along with the powdered limestone.

All aspects of this deposit reflects the construction of wall and tower.

We are now cutting through almost pure limestone powder. (J.)

Should need to sort out my tasks. (1) to go on with excav.

(2) to stop excavating on the grounds that I have fulfilled my

aim (3) to narrow the area for excavation.

Here is little deposit... at the south, white (soft) limestone... are clearly a local... excavated in 1940... of the inferior... because the top...

humble, although the... beneath the top...

with a more... 9.30 am...

... I have...

30.5.90

NMG 2 ① bag 1

medium-large wt of large ware ware bag shards

7 handle frags

1 tile frag.

2 clw amphora toe frags

2 rim frags coarse ware jars

1 rim frag large notched-rim bowl.

1 rim frag shallow bowl (large).

1 base frag gray ware bowl.

~~Clay frag~~

1 rim frag dull by thick fabric

2 rim frags semi-coarse bowls.

30.5.90

NMG 2 ①

medium-large wt large ware ware bag shards

3 handle frags

2 base frags clw bowls/jars

1 rim frag echinus bowl

1 rim frag bowl with dropped rim.

1 large prinder

Wednesday 30 May 1990

Weather clear and sunny at first; still, promising v hot as yesterday

Workers: Norik: Khalid, Younis, Younis, Jumaa, Amouna.

Halima, Aziza, Aziza Saloum (8)

Souths: Mhamed, Hussein, Monda, Hamad Saloum, Saleh

Hussein Abdullah, Hamad Aisa, [Oofal] (8)

NMG 2 ①

Work continues again today on the top-soil approaching the N end of the trench. Much piling keeps on coming.

There is little definition in the trench except for the blocks at the south, visible before commencement of excavation, which are clearly in line with the S wall of the interior space as excavated in NMG 1. No sign yet of the W boundary of this interior space.

Beneath the top soil there is not a consistent layer of rubble, although the odd field stone emerges (and is removed). Beneath the top soil I believe I can see a stratum of soil with a more reddish colour than the light brown of the top-soil. 8.30 am. almost 2 cms thick full of pithy

30.5.90

SMC 2

(4) crushed limestone powder

At the W of the trench we are level today with the bottom of the third upmost preserved block of both the Tower Wall and the circuit wall. But we are cutting through fine crumbled limestone in which are some fallen chunks of limestone.

We are working from W to E & have approx. half the trench to complete in this pass.

The blocks of both the Tower Wall and the Circuit Wall are square (to the view if not the tape measure): that is the circuit wall does not immediately assume the header-stretcher construction. This is the first point at which we have seen a departure from the header-stretcher construction.

7:10 am bag of iron in powdered limestone.

8:30 am do a NS alignment not far from the E bank of the trench some rough field stones that seem to be built into a wall. There are more sharp edged than is usual for blocks built into a wall, but a wall is possible.

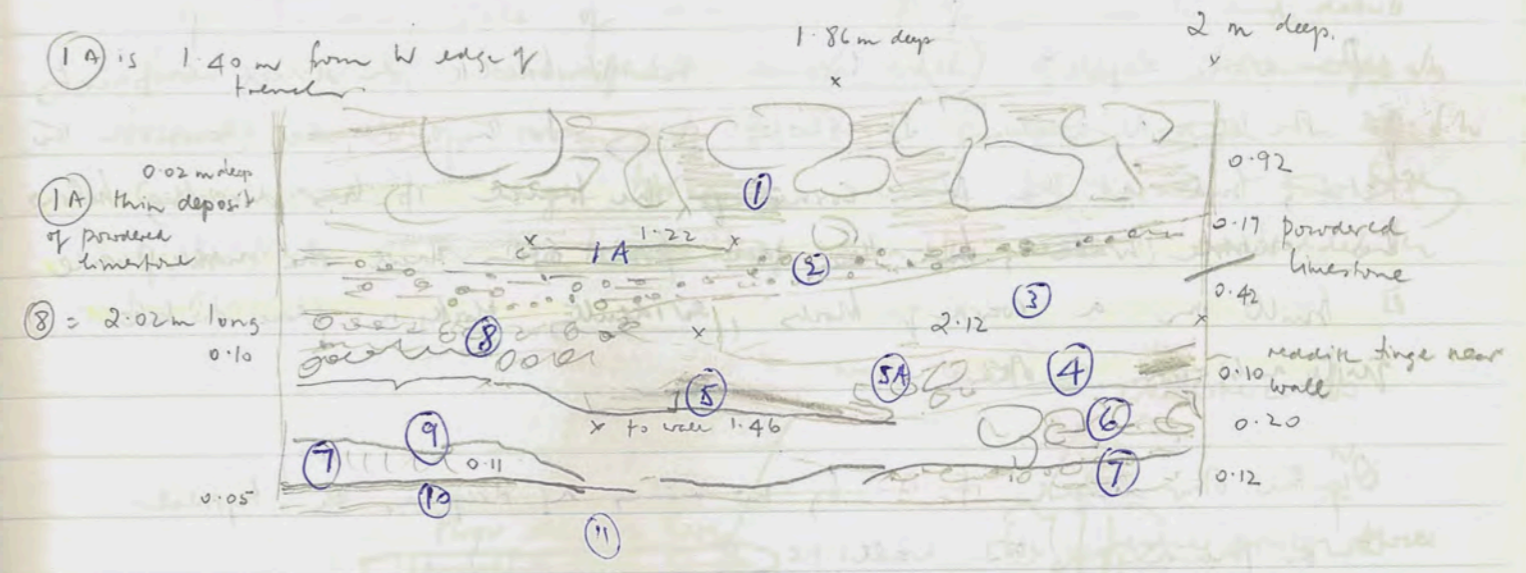
This presumed wall does not reach as far N as the Tower wall. It is close to the E bank of the trench.

We seem to be going great guns this morning.

30.5.90

NMG-1

N bank stratigraphy
Sketch and description



- ① fumble and light brown soil below thin layer of top-soil
- ② granitic soil that after wind when seen in steady horizontal layers: mixture of bone, tiny chips of limestone, and flecks of charcoal
- ③ pure white powdered limestone
- ④ small patch of soil with reddish brown tinge only near E wall
- ⑤ another thin patch of fine red-brown soil (decayed wood)
- 5A larger limestone chips between ④ and ⑤
- ⑥ narrow band of five six chunks of limestone
- ⑦ small chips of limestone in a reddish pinkish colour at E+W.
- ⑧ a line of five six chunks at W of tree
- ⑨ a light-brown soil deposit with gray mix at bottom
- ⑩ a band of coarse limestone belonging to the floor

There seems to be a hard floor at ⑪ of crushed limestone to bedrock. The roughly shaped blocks of the foundations show they were intended to be covered by the limestone deposit. The

A few days ago I commented that the rubble wall at the E of NMG1 is built on a stratum of crushed powdered limestone. Closer inspection reveals this not to be true.

The white deposit (3) lies on the N bank in direct continuity of the N wall. It slopes away to the N, as shown in the sketch; but at the NE corner of the trench it lies directly below the rubble wall, but there are firm signs that the rubble wall is built on a course of blocks, evidently blocks in place but quite ambiguous in detail.

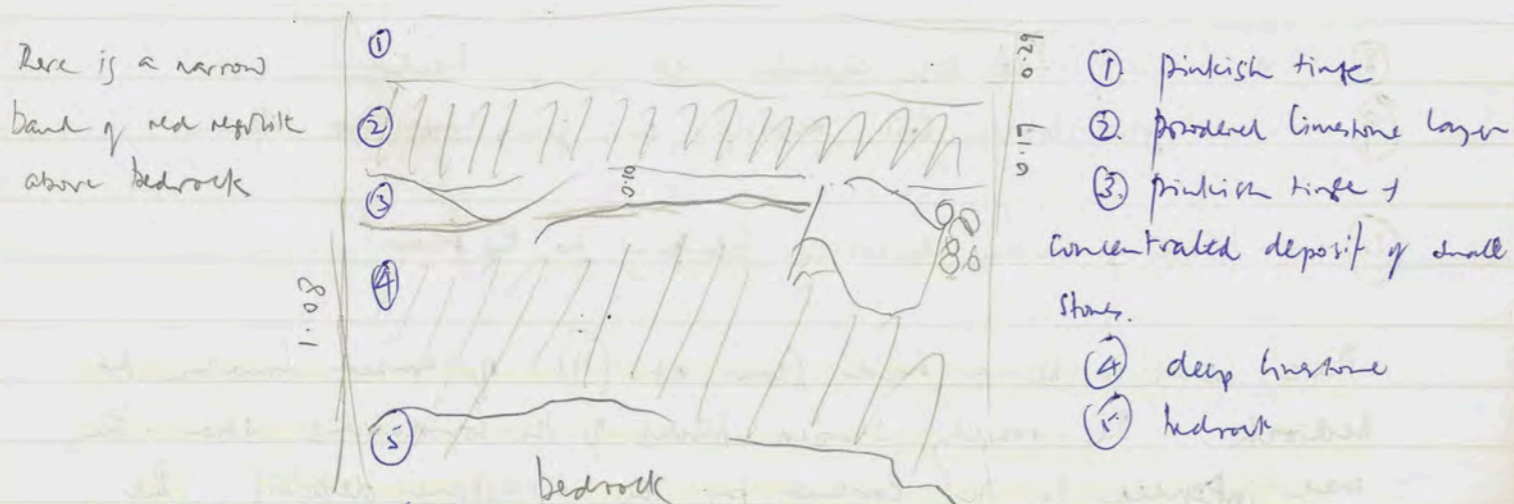
On the other hand it is by no means as deep as the typical course found on this wall.

The block above the shelf is 0.65 deep.

The ones in the second course are 0.46.

The white limestone above them, on which the rubble wall sits is 0.26 in deep at its greatest. This does not seem to have sufficient height for a wall block.

The stratigraphy of the spit dug to bedrock shows a pinkish deposit with small limestone chips, a white limestone layer, another pinkish stratum; then a good solid depth of crushed limestone.



The foundation trench is now 0.28 m wide (through uneven).

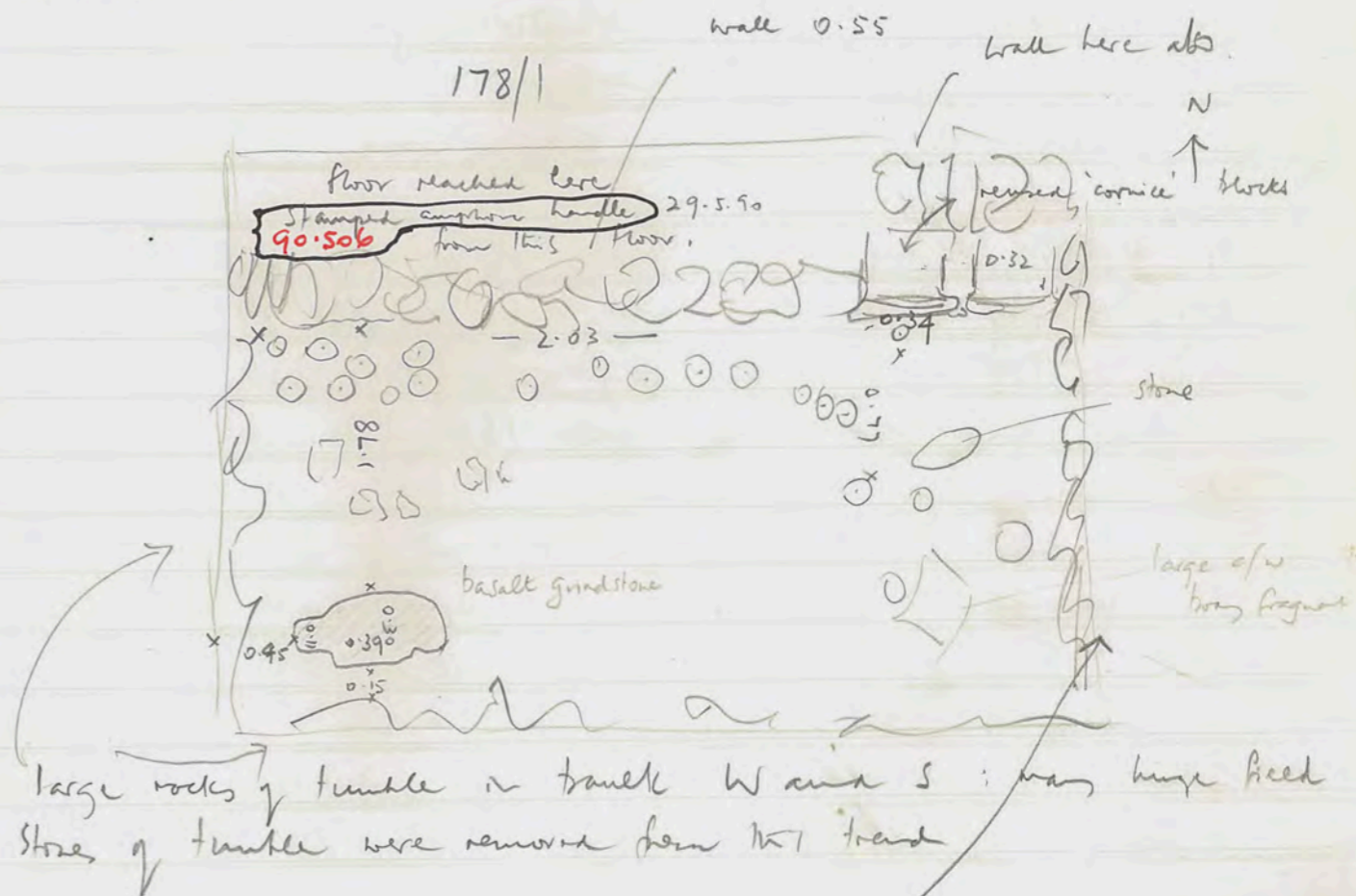
a little N (15m) of A3, B1 trenches (5)

178/1

* * * during ϕ Jack Turner, who usually trips over his own feet, stumbled on a marble fragment of a base foot (on a sand?) with 4 toes. Life-size +, marble statue

10.3am Roll 11, 6-23

of finished state of trench. ϕ of E and W and details from interior of loomweights against wall at N. Loomweights also towards centre of room. A large grinding disk in the SW corner and a large broken jar in the SE corner - the body of the vase is in the trench itself and the neck is embedded in bank.



The wall here is the dividing wall between House 2 and this house. Radi marks this room (178/1) and 3 others open on to the 'courtyard' which is Kate's recent trench (207/9).

Radi measures out 178/2 but it is a little to E of 178/1 as well as a little to the N! The grid seems in a parlous state here.

Thursday 31 May 1990

Weather: sunny, stiff breeze at first from NW.
 Workers: North: Younis, Younis, Khalid, Halima, Juma'a, (8)
 Amoun, Aziza, Aziza Saloum
 South: Hussein, Hamad Saloum, Hamad Aisa, Mohamed, (8)
 Saleh, Hussein Abdullah, Moussa, Oopa

NMG 2.

Still working on top soil reaching the boundaries of the trench at the NE corner. In the centre of the trench too I found top soil though the surface itself has been removed. Here as elsewhere there are signs of a reddish soil below the light-brown of the top soil.

10 am. The reddish soil kept being scraped up with the light-brown of the top soil, until in the NE corner of the trench we have come to a hard-packed limestone surface. It is 0.74 m down from the upper soil surface.

At the W of the trench only a few centimetres have been excavated. The ground slopes quickly from E to W. At the S the inside face of the wall of the interior space is becoming visible + work begins again now in the SW corner of the trench. The pitting from light brown + from reddish is going to be mixed.

31.5.90

NMG 2 (1)

medium-small wt work ware body sherds
 2 base frags c/w jars/bowls
 2 like frags
 1 rim frag echinus bowl rg
 1 rim + handle frag c/w jar
 3 rim frags c/w jars
 4 rim frags semi-crown bowls (w. paint)
 1 rim frag straight rim bowl.
 5 body frags assorted cooking ware

31.5.90

NMG 2 (1)

medium wt work ware body sherds
 4 base frags crown ware jars/bowls
 1 handle frag.
 3 rim frags crown ware jars
 1 rim frag echinus bowl
 1 rim frag gray ware bowl thick fabric
 2 body frags gray ware
 body frags bs.
 1 body frag, band of red paint

31.5.90

SM 4 2 (4)

Small wt coarse ware body sherds

31.5.90

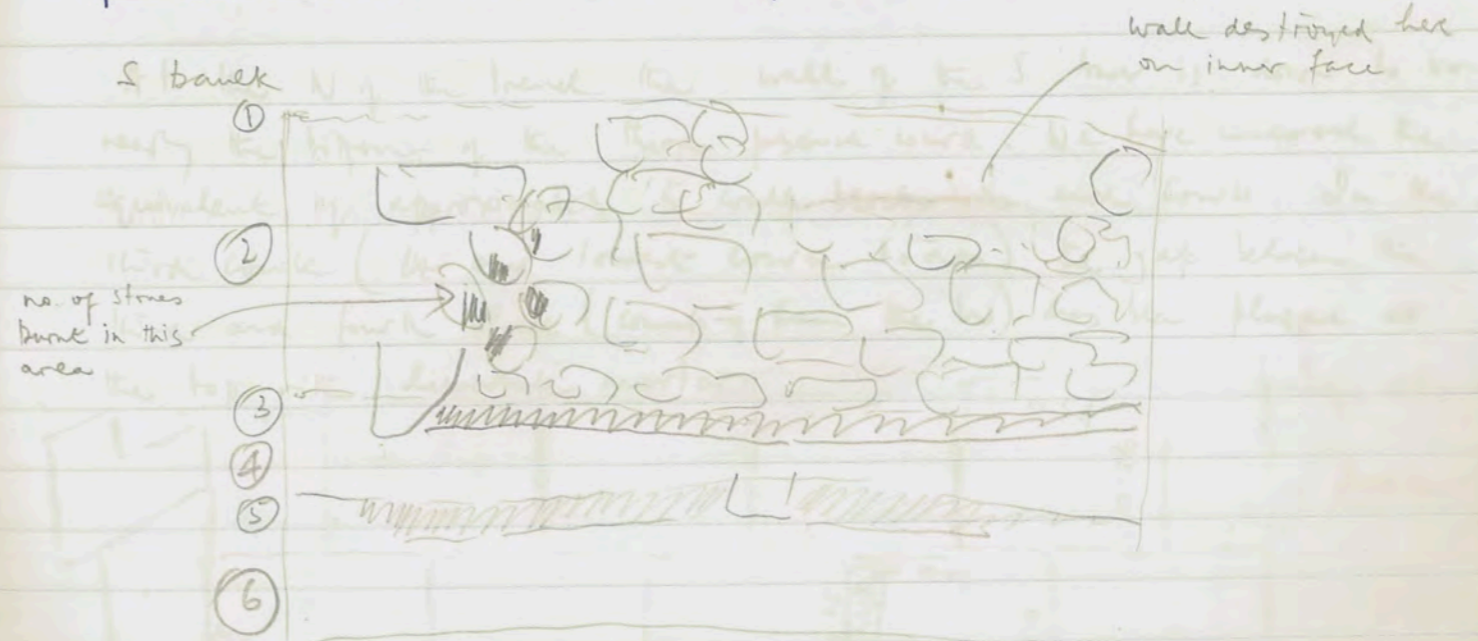
SM 4 2

A rubble wall on a slight angle to the E wall of the trench is now clearly in view. It seems to reach the S wall of the trench but not the N wall. To its N appeared to be soil: when we worked on first thing this morning this however was merely a fine layer because immediately the deposit is again the crushed limestone.

I just want to bring the trench down level (more or less) and then turn my attention to M. Galvin's 1988 trench, to clear it and remove some large tangle in the SW corner.

In SM 4 2 we are also working in the SW corner of the trench bringing the excavated level down even. Here there is a considerable amount of tangle of largeish field stones mixed with the limestone deposit.

The stratigraphy of the S wall shows the rubble wall built on a thick deposit of crushed limestone, then a considerable deposit of soil and again a deposit of crushed limestone.



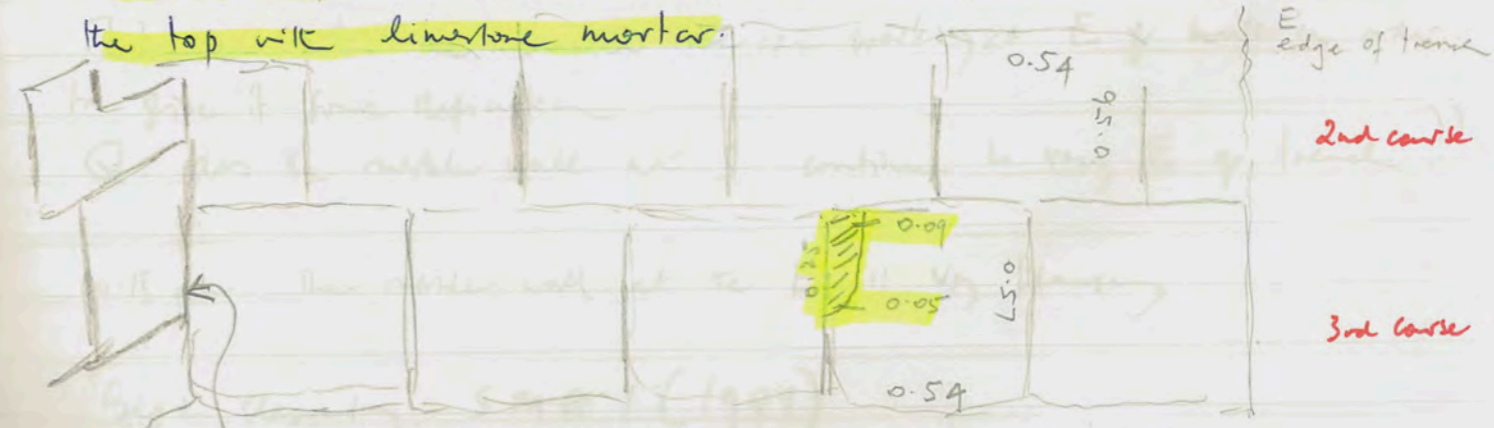
- ① top soil
- ② well constructed rubble wall
- ③ reddish river clay
- ④ crushed limestone
- ⑤ very fine dark brown soil
- ⑥ crushed limestone

SMG 2

- ① top soil : a few centimetres only
- ② wall : 1.28 m
- ③ clay : approx 0.09 m
- ④ limestone : as much as 0.20 m at E
0.10 m in the centre ~~is~~ in area of some rubble
- ⑤ dark brown soil : 0.15 m
- ⑥ limestone : 0.37 m

At the E the large block of rubble (it has a vertical side at the E) which sticks forward into the trench from the rubble wall and is more or less above the second (lower) rubble wall rests on a considerable depth of soil equal to the lowest course of the rubble wall and the red river clay on which it stands (0.22 m); beneath it is the upper band of crushed limestone (4). Therefore this projecting stone does not belong to the lower rubble wall. The stratigraphy of the E wall shows a band of limestone above the highest preserved course of the wall. This is the same deposit as the upper limestone stratum as seen on the S wall = (4) above. The dark brown stratum (5) is also appearing above the level of this wall.

At the N of the trench the wall of the S tower is down to very nearly the bottom of the third preserved course. We have uncovered the equivalent of approximately 5 wall blocks in each course. In the third course (the one lowest course to date) the gap between the third and fourth block (counting from the W) has been plugged at the top with limestone mortar.



Note join of Tower Wall and Circuit Wall

31.5.90

SMG 1 cleaning

small lot work ware body sheds

2 base frags c/w bowls/jars

1 stem ungulate

2 m frags echinus bowls

1 m frag semi-coarse jar dull red or pink

2 m frags fine fabric cups

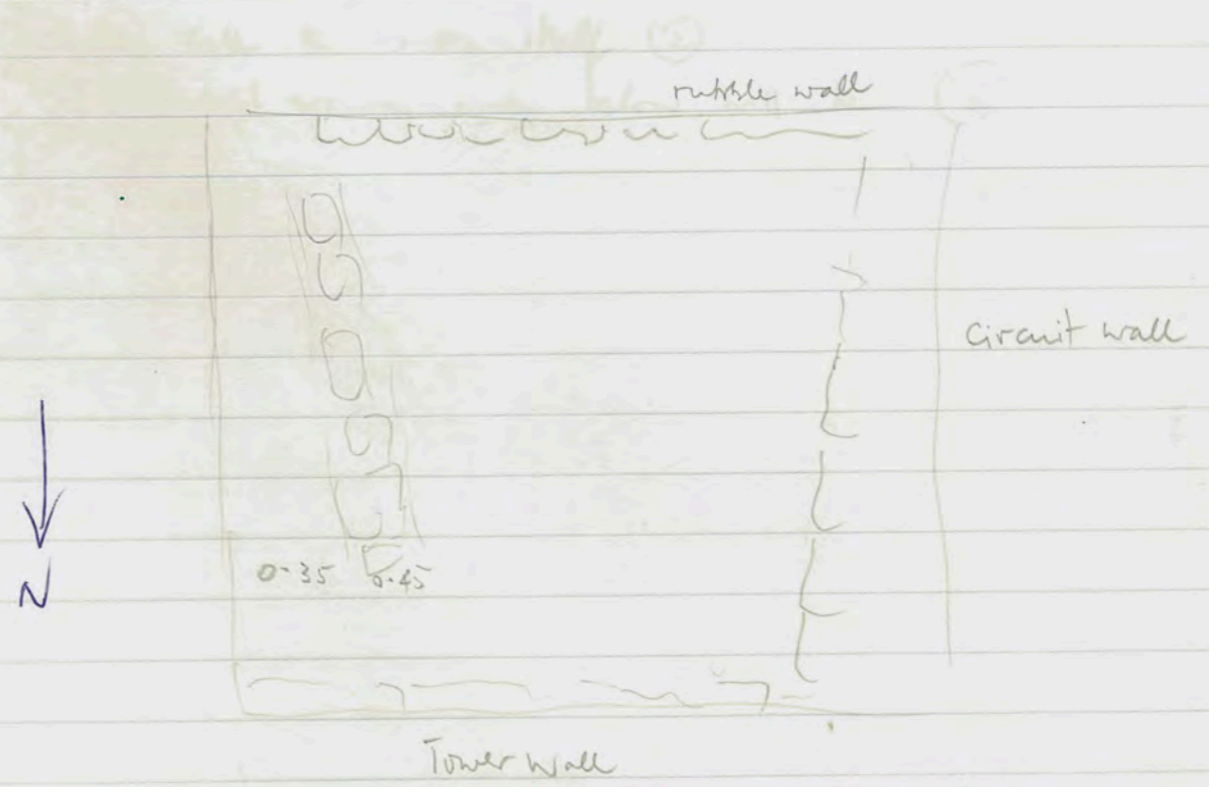
5 large frags cooking ware

31.5.90

SMG 2

On the S bank against the circuit wall, the limestone deposit is not so much the crushed + powdered, but loosely packed chips of limestone

Where well preserved the blocks of both tower and circuit have the nicely chamfered edges and meet on all sides with neat and close precision.



The inner rubble wall is shoddily constructed; it has no true vertical face at its W

7.30 am. At the moment we are working at E of wall in order to give it some definition

Q. does the rubble wall at S continue to very E of trench ??

10.15 am The rubble wall at the E is very pleasing

Best cleaning SMG 1 (1988)

31.5.90

363/2 Downman + 5 others

Final cleaning of rubble (excellently done) leads to ϕ at approx 8 am. R 11, -28 from S and N.

Work begins immediately on removing rubble. There is no obvious sign of structure but the stones in the SE area seem clearly rubble, as do a number of other large stones across the trench. We start in SE. We also keep in mind the EW aligned wall of 364/8 and will look for a continuation of this to the N in 363/2

Let's call the rubble itself (2)

∴ the soil around and below will be (3)

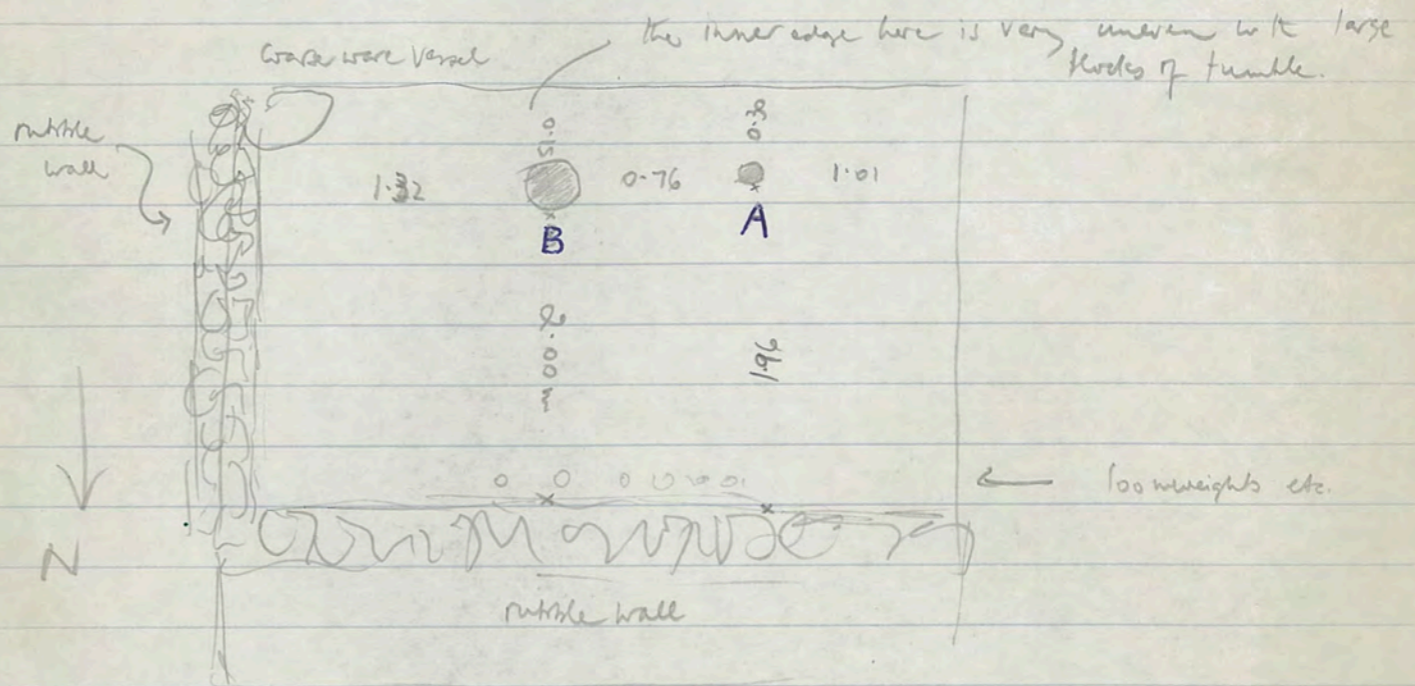
31.2.90

30/5/50
 From leveling of trench (excavated) trench is
 approx 8 m long - 4.5 m wide - 2 m deep
 with heavy masonry on one side. There is an
 opening at one end of trench but the stone on the other side
 clearly formed in the masonry of the large three courses the
 trench was about 2.5 m deep in masonry the EW
 alignment of 30/5/50 was well kept for a distance of 10 m
 to the N. of 30/5

② the hole shown was drilled with
 bits with the handle itself ②

31.5.90

178/1 Radi's loomweight trench
 8:30 am. ϕ of 2 small holes discovered at the end of
 yesterday's work when the loomweights and the 'basalt' plate
 were moved R 11, 34-36 ✓



A = 0.045 in diam. It is not at all perfectly circular
 not sure whether carved out of stone or made of some conglomerate
 with eg. pebbles to bind it. The predominant colour on the
 rim and inside is black.

Radi thinks it a post hole (later replaced by the larger
 hole B). The grinding slab was in this area. At first the
 relationship of the two cannot be seen.

B = 0.15 m in diam at outer lip. It seems simply to be cut
 from the hard floor. R says full of grey soil (hole)