

MAIN GATE

Book 1 ✓ '90

mainly

22 April - 13 May 1990

✓ Q (1990)



- Foundation level inside N. Tower
- drain of N. Tower
- E side of S. Tower (beginning).

Coir p. 26,

Stamped handle p. 40 (Coan) 90. 274

A4 NOTE BOOK

No. 595

MG

F. J. CONNOR	BOOK 1
JEBEL KHALID	1990



0 71993 00000 0

Sunday 22 April 1990

Weather: fine, sunny, sky clear.

Workers: Douma, Amouna, Ftaim, Fadwa.

Haj Taha, Turkiya, Hadija, Zarkiya, Yannis

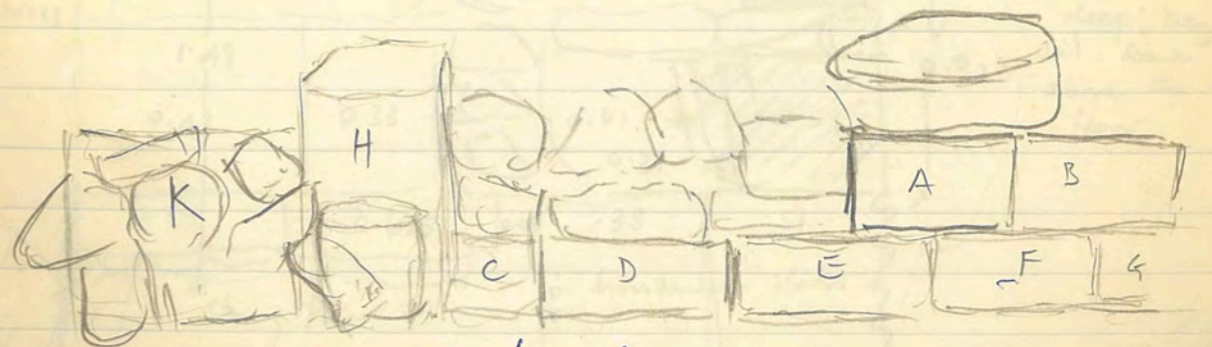
364

General cleaning of stones, walls and floors to level excavated in 1989

7.45 am. approx. bronze coin found in debris of above compacted limestone floor of 364/5 W, that is in the SE corner of the N room of this building (the Stoa?)

The horizontally laid jar in this corner has been destroyed during the year; the floor has now been cleaned to the hard surface. The flimsy structure, aligned NS, remains in place.

364/7A the large coarse ware jar placed against a backing of rubble stones, just to N of doorway in 364/4 has been removed by the locals during the year. To the E of the jar stands a well-placed ashlar block, now worn on the upper surface. This is the stone with the groove on the S side: it stands on soil and has a horizontally laid block to its N which is also placed on soil, but both are firmly laid. To the N of the pit is a jumble of stones



E wall of Stoa in 364/4 from W

22.4.90

22.4.90

364/6 S (3)

a few body sherds inc some of gray fabric

toe of large amphora + some body frags
all with pitch coating on interior.

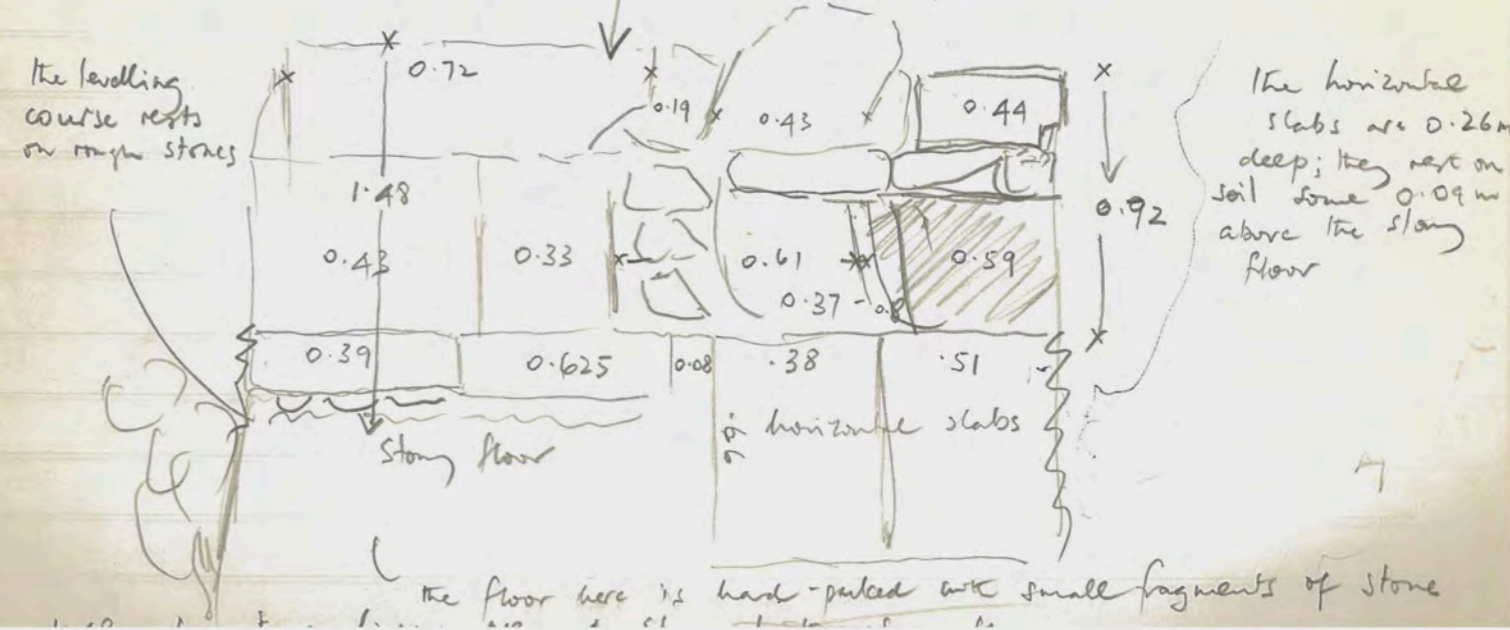
several frags inc base frags of large rg plate.
large base frag has small hole for ancient repair
rim frag unguentarium
small body frags cooking ware
ONE bag

2 stones widths have been removed from N of Block A - s 163
space was at the original door. A second phase concerns the
removal of these blocks, and a third phase would seem to be the
blocking of the space with unworked field stones. The pit and
would then be associated with the making of the doorway in the
second phase, since the stone to its E is aligned with the N
block immediately to N of the two blocks removed from the
stylobate.

364/6 Whilst cleaning this area to E of E wall of stoa, at
the E end of this trench where the depth has been taken down
considerably below the level in the rest of the excavations E of the
E wall of the stoa (!) there is a hard floor with small
patches of dark: it is not bedrock. The wall to its W seems
to rest on soil but it is very poorly made and may well be rubble.
Viewed from the W it is clear that a wall does continue to N of
main rectangular room of stoa. Further excavation in

this is in line, roughly, with dividing wall
of the large rectangular building.

364/8 W 1.00 m wide (approximately)
The small section W of the W wall of the stoa is cleaned. There is a
high step or platform made of one slab of stone



Monday 23 April 1990

Weather overcast & cold wind until ~ 10 am.

Workers

Younis, Mohammed al Hussein, Hamid al Mousa, Mahmoud al Hussein, Hussein Hamad, Shamsa al Han Ahmad, Turkiya, Haj Taha, Turkiya, Hadija, Younis

These ten spend the day clearing stones and then moving soil from a dump near D3 which had encroached across the road

At 9 am. Architect arrives from Acropolis to measure out trenches in the Domestic Quarter: 207/7 208/8 208/9 (Radi)

I spend some time describing and measuring Room 4 of House 2. At approx 11.10 am. an almost complete coarse ware one handled jar emerges at the Stoa (q.v. L. Breninger). Photos taken with B. Rowsey's camera

Wall, whether the walls of the pit stand a fill of soil and building. It is not clear whether lower of limestone. This of course makes measurement of the room. Since it was difficult to understand how a wall that would have functioned in the heart of a house could have been built.

~~Monday 23 April 1990~~ Tuesday 24 April 1990

Weather: Sunny at first with a sharp cool wind from N.
Workers: Younis, Mohammed al Hussein, Hamad Saloum.

Afternoon: Time spent organising start of work in the two new trenches for M. Warner and K. Burnett. Radio leaves almost immediately for Hama. Work continues here on clearing Room 3.

I send the above three workers to the Main Gate to clean the trenches. They begin with the trench to the E where is the rubble wall (EMGI)

During the past year some illicit digging has taken place in the N tower: to the N of the horizontal hole that last year appeared to be a drain. At the S end of the drain perhaps some blocks have been removed and the hole enlarged.

The rubble pit shows that the centre of the tower itself is not solid-built. There is a clearly constructed vertical edge of the wall, whilst the walls of the pit show a fill of soil and limestone: it is not decayed ashlar blocks of limestone.

This of course makes more sense of the drain since it was difficult to understand how or why this would have functioned in the heart of a solid built tower.

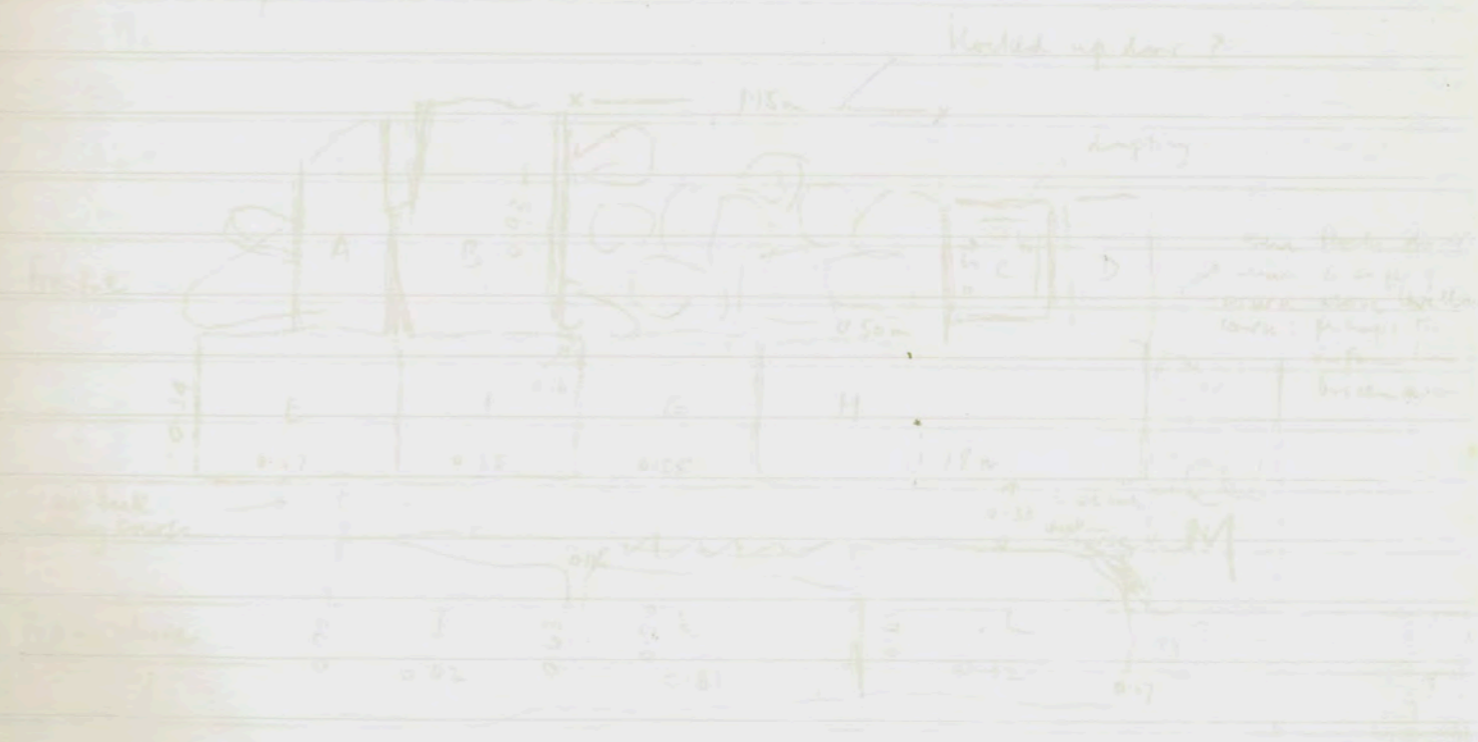
24.4.90

Workers: Isah Ahmed, Aida al Ahmad, Cremer al Ahmaid, Amira Taha, Youssef Mohamed.

During Radi's absence work continues on a small section of Room 3, against the Wall

The wall is the head, long way leads to the N of the wall by doorway. It has a large crack down the middle. Several patches are below the upper surface. The top of the previous facade of E wall of the has not yet been measured properly but it seems to be of rubble construction. To the S. of the crack but with the corner above the leveling course is complete - so that perhaps marks the end of the earlier construction of the substructure, at least of the E facade.

364/5 E & S



position

... and ...
... close ...
... away ...

24.4.89.

364

Roll 1, 6-9

9.30 am. ϕ of small NS wall uncovered in bank between 364/5-6, which includes the full paving stone which does in fact end a few centimetres before the wall above said.

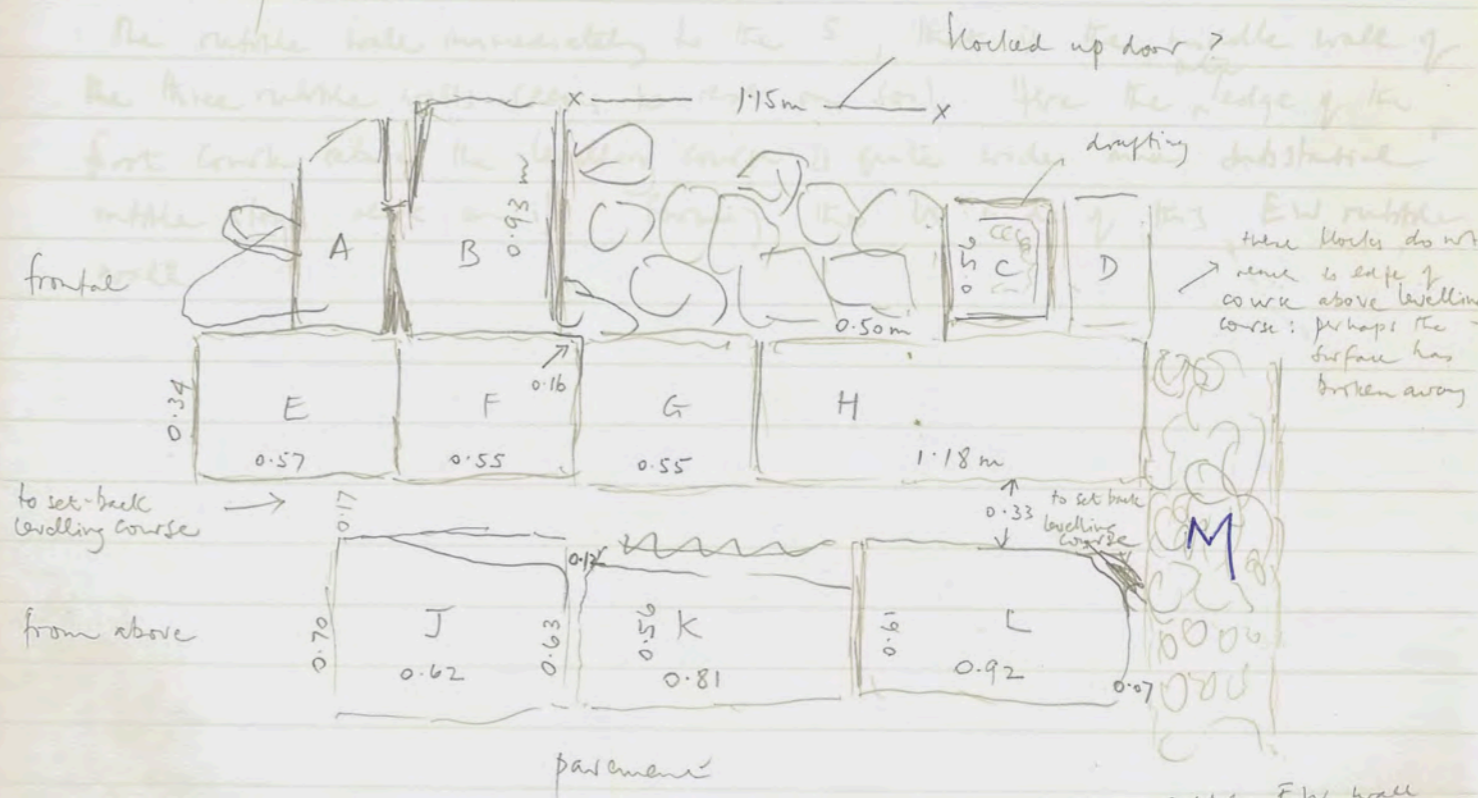
Also uncovered is the second contiguous header to the N of the blocked up doorway. It has a large crack down the middle and several portions are broken off the upper surface.

The top of the preserved facade of E wall of stoa has not yet been uncovered properly but it seems to be of rubble construction.

To the S of the small EW wall the course above the levelling course is complete - so this perhaps marks the end of the ashlar construction of the substructure, at least, of the E facade.

The rubble wall is 11.15m long and 0.84m wide on the S side and 0.84m wide

364/5 E at S



Block C is 0.88m long and reaches across the whole width of the wall except for the space at the facade. Closer inspection reveals the outer face of C has dropped edges, therefore it has now crumbled away. The drafting at the offset is particularly wide (= 0.10m)

24.4.89

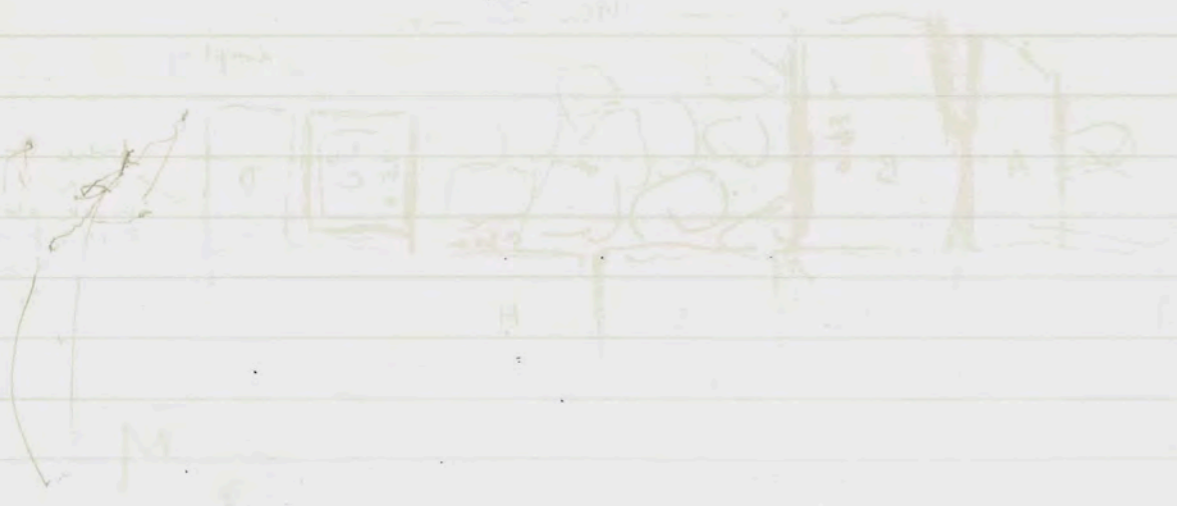
364 continued

Block B is 0.58m wide and does not cover the complete width of the stylobate. Behind it are rubble stones which form part of the inner face of the wall. This might seem to show that the rubble parts of the E wall of the main building were original and did not merely block up formerly empty spaces.

Note that in NE corner of the N room as found in 364/8 is a squarish structure not well defined because the stones are worn and crumbled

The rubble wall M is preserved to a height of approx 0.82m on the S side and is 0.84m wide

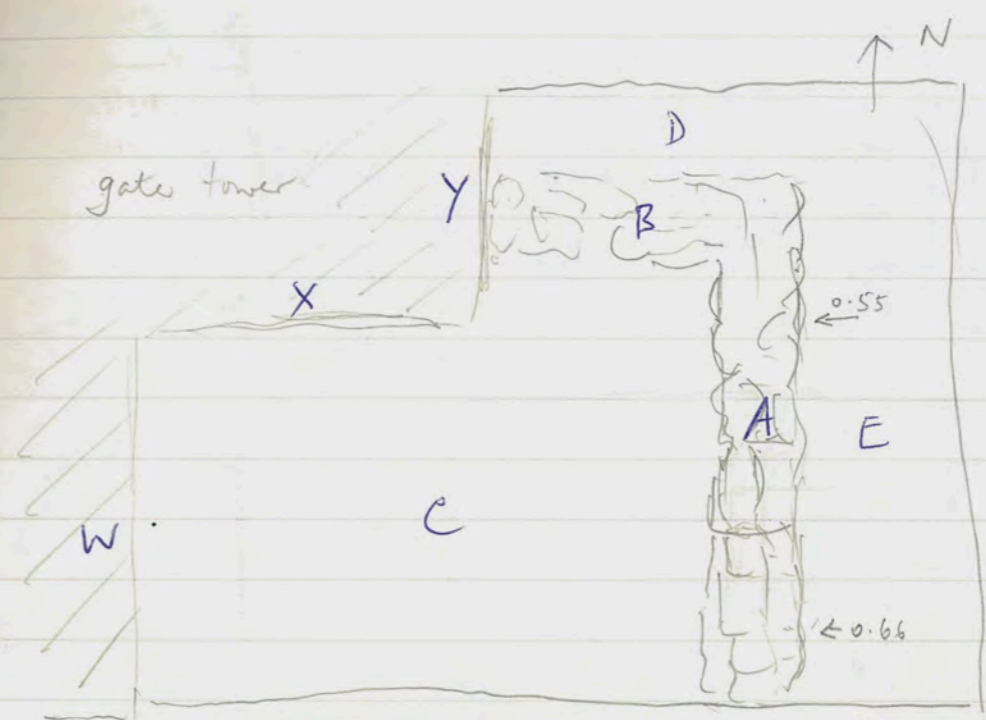
The rubble wall immediately to the S, that is the middle wall of the three rubble walls seems to rest on soil. Here the ^{outer} ledge of the first course above the levelling course is quite wide and substantial rubble stone rest on it, forming the W end of this EW rubble wall



24.4.90

Main Gate.

EMG 1 ?



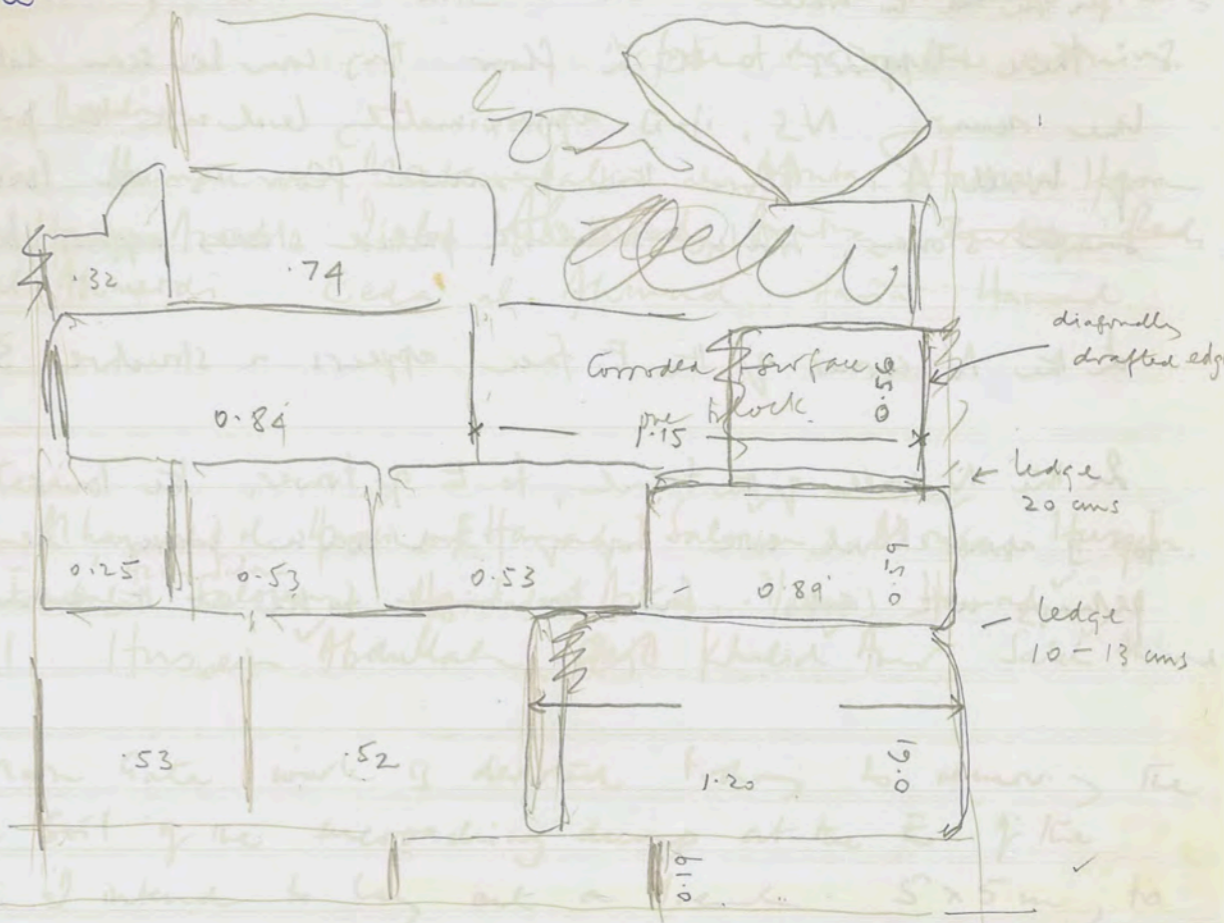
The present floor of C is a hard-packed floor which is definitely an original (the original) floor. Near wall W this floor has bits of river clay of an ochre colour; closer to wall A it is granitic or of crushed limestone powder.

Wall B at its E part seems to rest on soil. Wall A is composed of quite large fieldstones, but seems to rest on a mixture of soil and small stones; its greatest preserved height above above the hard-packed floor is c. 1.00m; of which c. 0.72 is large rubble blocks in 4 courses at the top. Wall A gets progressively wider to the S. Wall B has not been cleared on the N side but it measures 0.62m; its preserved height comparable with that of wall A is c. 0.21m and from the top of the second bottom large ashlar block of the tower

24.4.89

Main Gate
Wall X

interlocks
Keying for
laying of stone



The S wall of the trench has from the surface down to approximately the top of the lowest course above the levelling course, a heavy depth of rubble including decayed large blocks: to a depth of approx 1.30m. Below that as explained last year, there are a number of thin strata of black alternating with red: approx 0.63m up from the hard-packed floor. There seem to be at least 13 such alternating strata. There are flecks of charcoal embedded in both red and black.

→ Near the wall are large stones and large pieces of pottery mixed: this seems to be true of the whole length of this S wall of the trench. There is also quite a large bone embedded in this stratum.

From the hard-packed floor upwards we are clearly dealing with deposits formed during the life of the city. The hard-packed floor seems to be at same height as the paved roadway. In that case

→ the rubble walls can be seen to be built on a deposit formed soon after the construction of the gate where rubble wall B meets Y an ashlar block juts out from Y.

24.4.89

In the E wall

There appears to be a floor. This can be seen like a firm line running NS; it is approximately level with the preserved top of Wall A. Above this presumed floor is a loose dump of small stones; whilst smallish packed stones appear below it.

In the N corner of the E face appears a structure 3 courses high.

In the N wall of the trench, to E of tower, the lower strata whose top is about level with top of 3rd course proper, seems gray perhaps with ash. Sun too bright to see at the moment.

Saturday 28 April 1990

Weather windy, overcast with dust. Wind increase fresh in force during the morning.

Workers: for Radi

Youssef, Hamad al Mousa, Salim al Mousa, Hassan Hara, Hussein, Hassan Aoud, Isah ~~Alhamed~~, Amra, ~~Zakarya Radi~~, Cremer al Ahmedi, Eeda al Ahmad, Hassan Hamad.

Main Gate:

Younis, Mohamed al Hussein, Hamad Saloum, Mousa, Hussein, Aziza, Faissal ^{Aziza Saloum} Saloum, Hamad Aika, Younis Hamad.

(13) Ali ^{Oofan} Smail, Hussein Abdullah, ~~Ali~~ Khalid Amir, Saleh Ahmad.

At the Main Gate work is devoted today to removing the stones and soil of the encroaching dump at the E of the structures. I intend to lay out a trench 5x5m, to match EMG1, on the S tower in order to find the exact position of the turn of the tower as we have found it in EMG1.

A group also clears stones from the top foil of the trench immediately to the N of MG1 in which illicit robbery has revealed an end of the solid built construction suggesting that the tower is 'hollow' i.e. encloses a rectangular space inside.

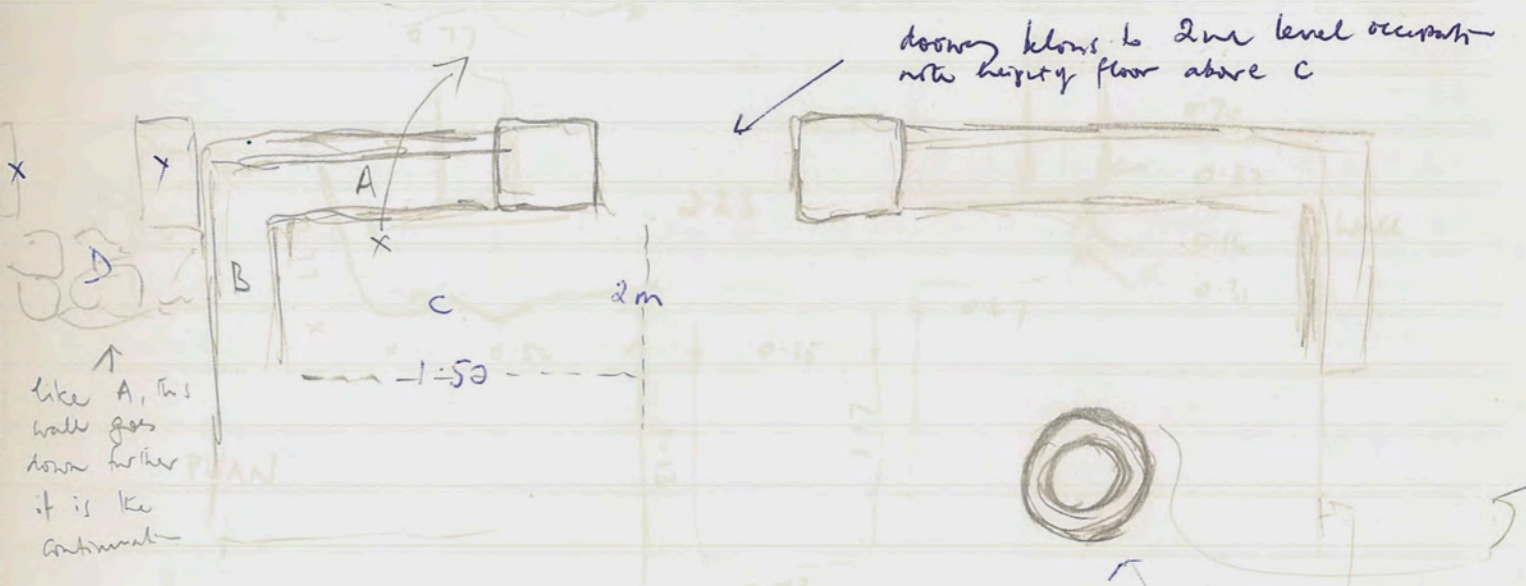
c 11 am ϕ Roll 2, 1- of a granular bowl cut out of limestone found to mark W's trench just below the surface soil.

28-4-90

House 2

Courtyard

NW corner = 179/4 - 179/7



The wall B rests on a depth of soil, approximately 0.63 m from the lower floor excavated in this corner of E4 (?)
 Wall A continues to this lower floor excavated in this small section (C) c 0.44 below level of courtyard with circular stone
 there is a reddish stratum above a substantial gray stratum, then light brown soil mixed with small stones and some fragments of pottery

Wall D, which has been presumed outside House 2 is constructed similar to A. There is a doorway. Since Wall B is built on soil, perhaps A and D were once part of a single wall + belonged to the same house and B is a ^{later} division of the courtyard. Note depth of doorpost Y it rests on the rubble wall which rests on 1st level floor

Sunday 29 April 1990

Workers on stone-removal Domestic Quarter

Hamad al Mousa, Hussein, Hassan Hassan, Hassan Hamad (4)

208/8 (KB II)

Haj Tahar, Turkiya, Hadija, Zurkiya.

Work continues here on cleaning top soil from layer of tumble. In NE corner of trench little tumble appears, therefore a few more centimetres of soil are to be removed to see if the tumble lies slightly lower. This area will not be dug too far down if no tumble emerges.

207/7 Final preparation for ϕ of tumble. One or two blocks seen horizontally laid. These will be taken as possible walls and exploration will continue next to them to ascertain whether there are blocks beneath them.

ϕ Roll 2, 9- from N and from E

208/8 8:25 am.

At the E end of the trench a space of approx 0.88m no tumble appears still. The soil is fairly soft with an admixture of small stones. Over the rest of the trench it is difficult to see where there might be a structure. In the SE corner there emerges a few large pieces of bone, barely 0.15m down from the upper soil surface. The coarse ware sherds from this deposit. Stones could be removed starting from the E and working W.

ϕ at 8:50 am from N. Work will continue removing tumble Roll 2, 14- working from E \rightarrow W

11:40 top layer of tumble removed to reveal soil work progressed up to 1.40m from W edge of trench

29.4.90

NMG1 (1)

Small wt coarse waste shreds.

48 bare frags coarse waste bowls.

1 rim frag looking waste

1 heavy frag red glaze

1 frag red glaze

2 heavy frags looking waste

2 rim frags coarse waste vessels

1 rim frag small fine bowl waste red glaze

29 April 1990

Main Gate:

Workers as listed for yesterday: Younis, Mohamed al Hussein, Hamad Saloum, Munir, Hussein, Aziza, Aziza Salouma, Hamad Asa, Younis Hamad, Oofa, Hussein Abdullah, Khalid Amr, Salah Ahmad (13)

With new zembit and wheel barrow work continues removing rubbish pile at E side of gate

10 am dump cleared back now a metre past the E edge of EMG1. I have calculated, I hope correctly, that to catch the corner of the S tower, similar to the N tower, on EMG1, it will be necessary rather to work a trench S of the S boundary of MG3, but in line with EMG1. On the surface within this area there are, however, several large limestone blocks.

10 am. with 5 workers I begin again on NMG1 clearing away the limestone deposits from the surface especially around the rubbish pit. I have called this deposit (1). The E boundary of this trench is clear and I have clarified the W boundary. The rubbish bag will contain material from deeper down, inside the rubbish pit.

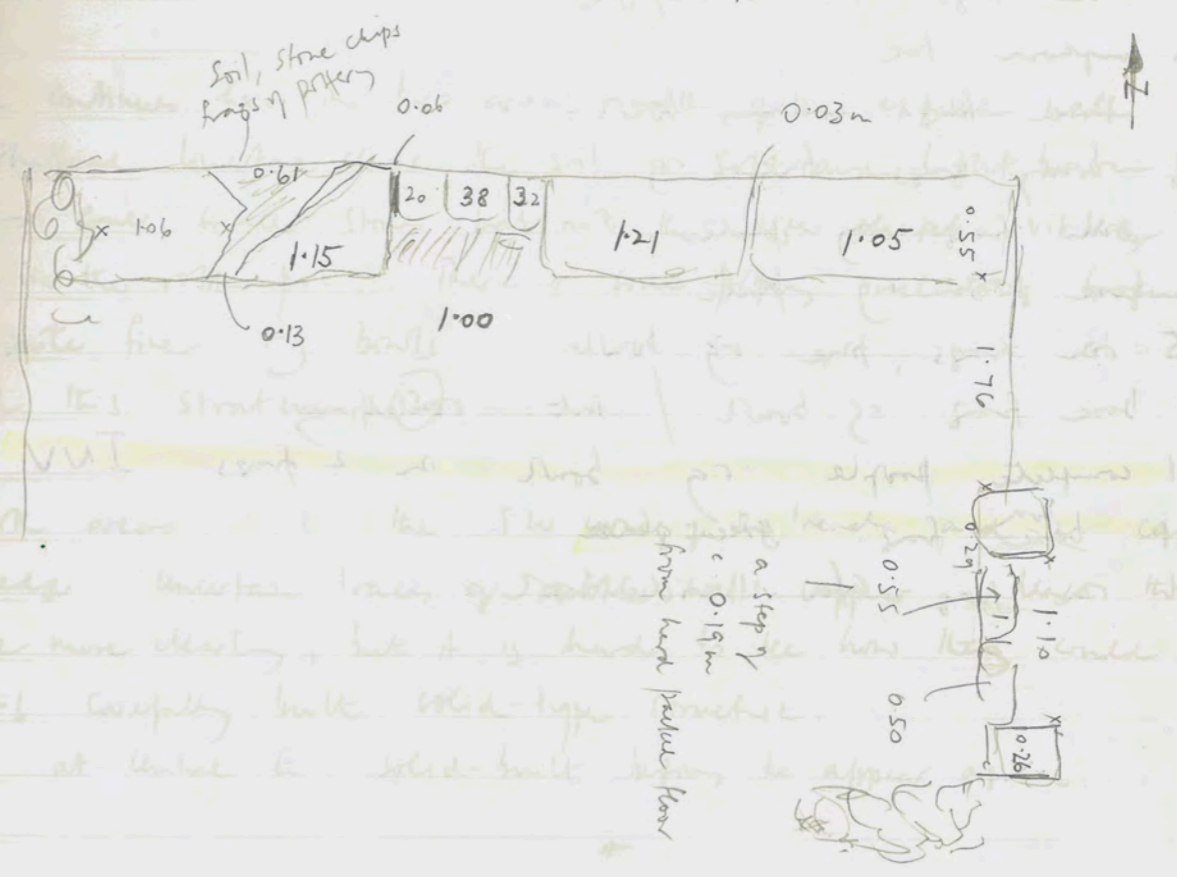
A few small pieces of bone from the current surface just to N of rubbish pit. 12 noon a tiny piece of bone from surface at S.

On the W face of the S corner of the N tower the first trench does not show the decorative cladding because the one or two blocks whose outer faces are not decayed, project outwards to the edge of the levelling course. In the trench I dug up the NW corner however. 3 normal blocks lean out to the W indicating the cladding is 0.27 wide, 0.84 and 0.77 long. The brick is badly damaged

Monday 29. 4. 90

House 2 Room 3 still 179/5 - 179/8

Ø of stone bench along N wall. Some rubble (still) remains in the NW corner. Roll 2, -20.



30.4.90

NMG 1 ②

small wt crack ware body sherds

3/4 base frags c/w bowls/jars

2 amphora toe

1 rim frag celadon bowl

9 body frags fine rg

1 rim frag rg plate

1 base frag rg plate

5 rim frags fine rg bowl

1 base frag rg bowl / int. rivetting

1 complete profile rg bowl in 2 frags INV

1 base frag green glaze

1 rim frag c/w wide bowl

Monday 30 April

Weather sunny clear, still at first.

Workers on stone removal DA Hassan Hassan, Hamed el Mousa, Hussein, Hassan Hamad

Workers: as kicked yesterday + Jumain Saaleh. (14)

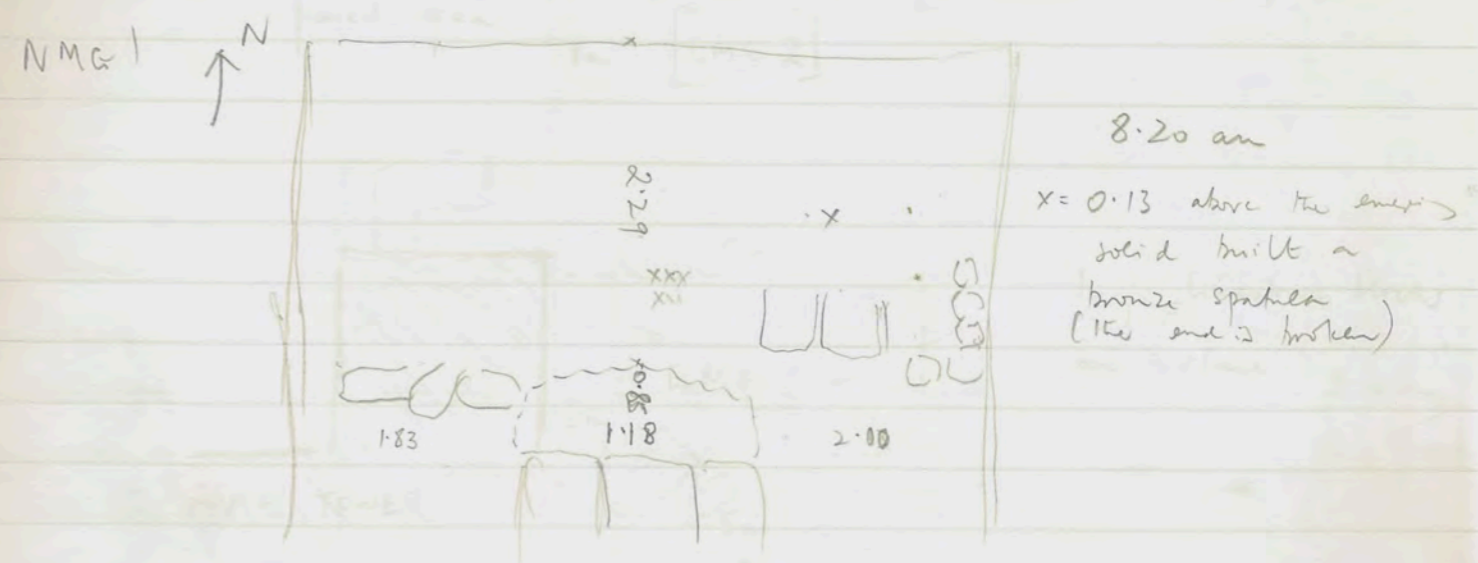
NMG 1

Work continues here in two areas north of the exposed wall. Beneath the shaltered limestone chips the soil is soft and light brown; it contains some small stones, but not the larger chert nodules visible lower down in the rubble pit. There is some pottery including fragments of 2 quite fine rg bowls. There is a full profile of an rg bowl w. base ring.

Call this stratum ②

In both areas: 1. the SW corner of the trench and 2. central E edge. Uncertain traces of rubble walls appear. I leave this to emerge more clearly, but it is hard to see how they could be part of this carefully built solid-type structure.

8.15 at central E solid-built begins to appear again.



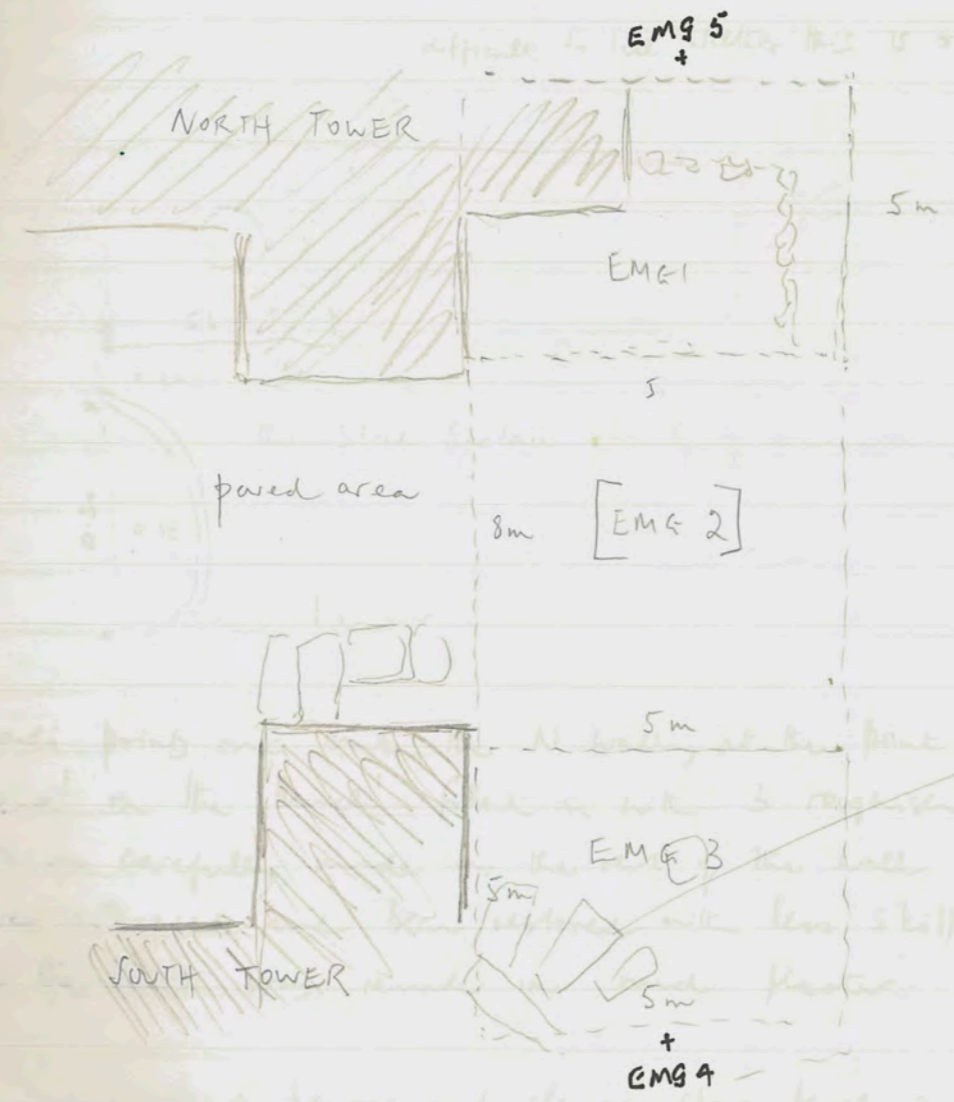
The rubble pit is approx 1.10m deep and has exposed 2 levels depth. In central E section black soil appears; its upper level is equal to upper level of emerging solid-built.

30.4.90

EMG 3.

With architect (B. Romney) a trench was marked out on the S of the E side of the gate.

After considerable thought and much misfiring, I departed from the regular pattern of trenches utilized to date and at the Main Gate. I retained the dimensions 5m x 5m used for example in EMG 1; but not wishing to excavate through a heavy deposit of crumbled limestone without finding the edge of the S tower for which I am looking, I decided to measure 8m from the S edge of EMG 1 before marking out the 5m further S.



Work began immediately on the surface soil ① starting across the N boundary working to S. The soil is fine, light brown (wind blown?) with small chips of limestone. No pflugs by 7.45 am

11.45 am work progressing nicely. working now on final third of

of p. 25

EMC 3
 all the stones in the NW corner have been removed to reveal that the stone bench continues to the W wall and indeed continues beneath it. Just south of the 'bench' and itself half under the W wall of Room 3 (two pieces of evidence indicating that the W wall of Room 3 belongs to a second phase. At the west wall the 'bench' appears to have a circular depression 0.13m in diam - and 0.20 from the N wall; 0.20 also from the W wall this area is now being prepared for photography

EMC 2

EMC 2

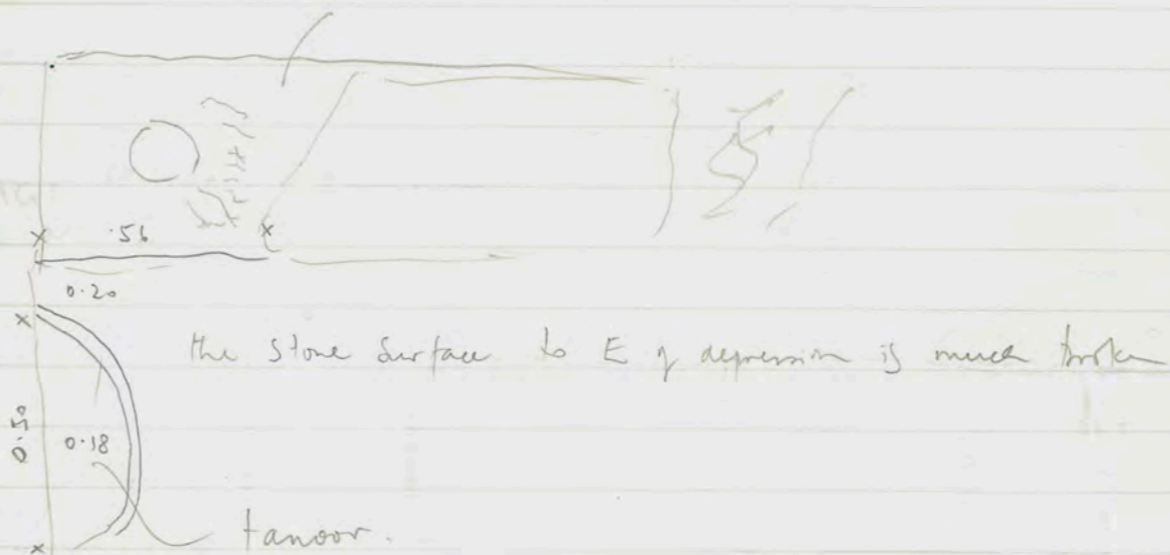
① ...
 ...
 ...

30 April 1990

DQ House 2 Room 3 179/5-179/8

10 am. The tangle in the NW corner has now been removed to reveal that the stone bench continues to the W wall and indeed continues beneath it. Just south of the 'bench' and itself half under the W wall of Room 3 (two pieces of evidence indicating that the W wall of Room 3 belongs to a second phase. At the west wall the 'bench' appears to have a circular depression 0.13m in diam - and 0.20 from the N wall; 0.20 also from the W wall this area is now being prepared for photography

difficult to tell whether this is one stone



Radi points out that the N wall, at the point where there is a 'break' in the 'bench' filled in with 3 roughish small blocks, is not as carefully made as the rest of the wall to E + W. It may have collapsed and been restored with less skill. Radi sees the 'break' in the bench was made in mud plaster.

12:10 pm. ϕ of tanour and cleaned stone bench in NW corner Room 3
 Roll 2, - 34

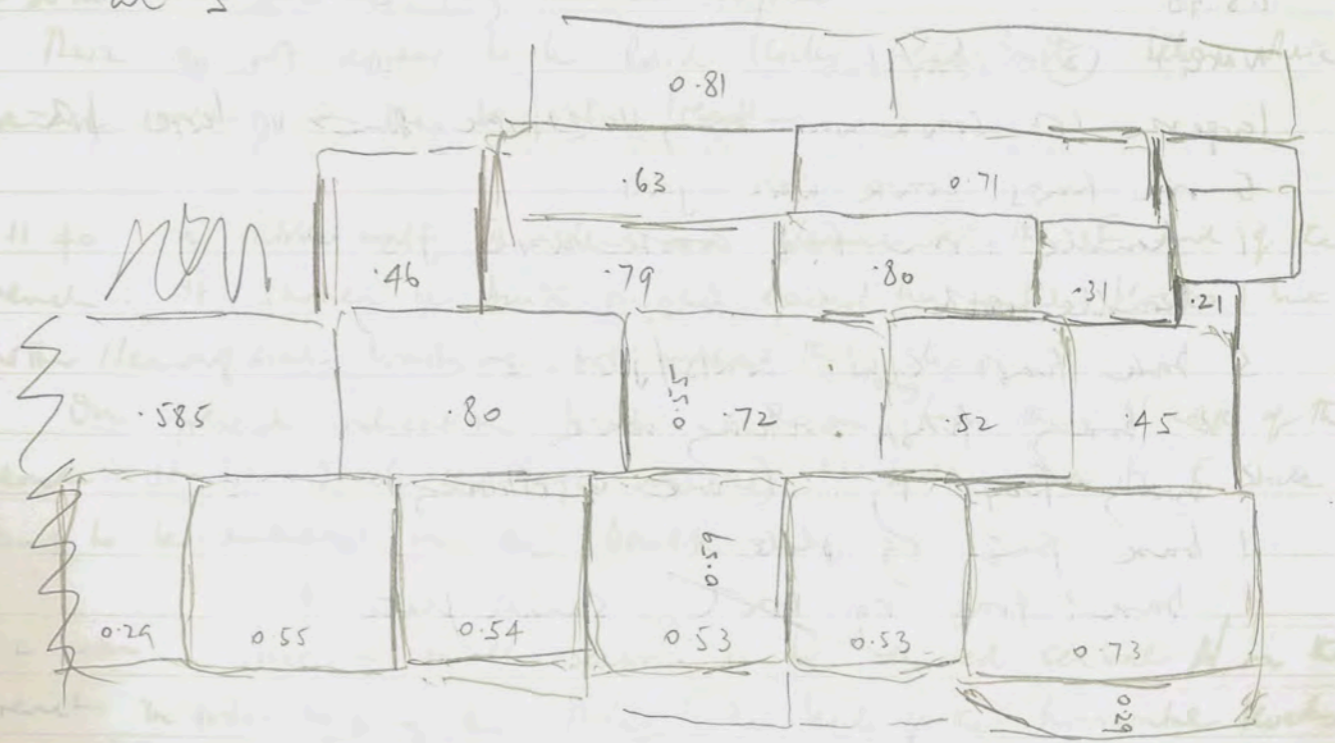
there is rocky gray soil inside the tanour and some to its E

30-4-90

Tuesday May 1990

EMG1
 Wall 2, 28-29. from W of E face of trench showing stratigraphy above level of rubble wall: with, in particular, loose packed stratum of limestone chips above what appears to be a hard floor a few centimetres thick () and loosely packed limestone chips below it, with larger stones mixed in at the bottom of the present cut which seems to be a flow of hardened reddish (river?) clay. This is at a higher level than the floor to W of the NS rubble wall. The deposit on which the NS rubble wall is placed is also the reddish hard river clay - with the red clay packed also in the spaces between the blocks (!) ✓

EMG1 E face of extension
 at S



1.5.90

NMG1 (2) bag 2

- Smallish wt work ware body sherds
- base frag rg plate
- 2 joining base frag rg plate
- 4 B base frags work ware bowls
- 4 rim frags c/w bowls
- 1 rim frag c/w jar
- 1 body frag dip pint
- 1 body frag green glaze (corroded)
- 1 rim frag mortarium
- body frags cooking ware
- 2 frags tiles

1.5.90

NMG1 (2) bag 1

- largest wt work ware body sherd he. some > v. large plate
- 5 rim frags work ware jars
- 1 handle + rim frag work ware jar
- 1 handle root body frag
- 3 base frags c/w bowls/jars
- 2 body frags cooking ware
- 3 body frags rg (one w. ribbing)
- 1 base frag rg plate
- 1 base? frag rg ~~plate~~ small plate?

Tuesday 1 May 1990

8.15 strong cold wind from W

Weather overcast at first, but clearing, slight breeze, cool.

Workers Younis, Mohamed al Hussein, Hamad Saloum, Mouna, Hussein Aziza, Aziza Saloum, Hamad Fisa, Younis Hamad, Oofa, Hussein Abdullahi, Khalid Amr, Saleh Ahmad, Jumaa Smaeen + Amouna (15)

Work continues on NMG1 at W/E and W of Trench. Both areas are down to about the level of the large laid block that has appeared at the E, but which cannot yet be defined at all closely. Unusually in our experience at the gale there is quite a deep deposit of fine light brown soil; it contains considerable amounts of bone.

At NW of trench several large fragments of a large work ware jar appear from quite near to the [upper] surface soil, perhaps about 0.30m down from the very uneven surface.

There do not appear to be laid blocks solid-built below where we are working in the W of the trench.

11.40 a rubble wall is clear and cleaned at the E end of the trench. It should be built on the large horizontal blocks but further cleaning and brushing will make this clear.

On present indication it is 2.70m^{long} from the N edge of the trench. It is 2 courses high on the W side and its E side seems to be embedded in the bank.

12 noon Just a small section to be removed central N in the trench in order to bring the whole to the level of the horizontal blocks on the E side. The upper surface of this stone is very friable but the soil to the W of it is very soft and loose.

1.5.90

EMG 3 ①

- Small wt crack were body frags
- 2 rim frags rolled in
- 1 rim frag flaring bowl (2)
- 2 body shards 19
- 1 base frag crack were bowl.

1.5.90

EMG 3

Work continues. One large block has been rolled when loosened from the upper surface. We are working 5' from above the middle of the trench. A layer of small rubble seems to be appearing at E in the centre of the trench.

12 more work continues loosening soil and decayed limestone from around v. large blocks in SW corner of trench

A block in situ appears towards the W edge of the trench and the edge of another a little to the N

1.2.90

1.5.90

EMG 3 (1)

Work continues on the trench. The upper surface is now being worked. The trench is now 2.5m long and 1.5m wide. The soil is being removed from the trench.

2.5.90

EMG 3 (2)

Work continues on the trench. The trench is now 3.5m long and 1.5m wide. The soil is being removed from the trench.

2.5.90

EMG 3 (2)

medium wt work ware body frags

3 rim frags work ware jars

5 base frags work ware bowls

1 small pointed toe of amphora

2 frags of handles

2 rim frags work ware bowls

assorted body frags of various qualities etc.

Wednesday 2 May 1990

Weather clear but very cold with strong winds from W
workers all present today + Mrs Younis (15)

EMG 3

Concentrated immediately on large blocks in SW corner. This had been largely cleared of soil by the end of work yesterday and came away easily. Subsequently there is much crumbled limestone and soil to clear away.

My fingers are very cold - hence the scratchy writing

In SE corner of trench, right at the bank a rubble wall emerges by 7.30am.

Wind too strong for easy writing today.

Much progress made at the S of the trench where large blocks were removed.

At 1 pm.

Φ of Jack's trench 333/7

of cleared rubble. This can be removed tomorrow

2 May 1990

2.5.90
NMG 1 E (2)

medium lt work ware body sherds

- 3 rim frags mortarium.
- 1 rim frag cooking ware
- 3 body frag cooking ware
- 2 rim frags work ware jars
- 4 base frags c/w bowls varying sizes
- 1 amphora handle no impression
- 1 rim frag deep bg bowl
- 3 handle frags
- 1 body frag green (?) glaze open vessel
- 1 rim frag echinus bowl.
- 2 rim frags bowls

2.5.90
NMG 1 W (3)

medium-large lt of work ware body sherds

- 6 rim frags work ware jars
- 2 rim frags mortarium
- 1 rim frag echinus bowl
- 1 rim frag flaring rim bowl
- 3 base frags work ware bowls
- 1 base frag fish-plate bowl
- 6 assorted body frags
- flint
- 1 handle frag.
- 1 rim frag cooking ware + 5 body frags

NMG 1

Work continues at site E + W

At the W the 5 field stones aligned more or less E-W have no stones beneath them and therefore do not form a wall. They are placed 0.60 m from the structure at the S of the trench and 0.35 m from the W boundary of the trench.

The deposit today is crusted limestone. Very little pottery

9.50 am.

in W corner a small semi-preserved stone which impresses the workers

At the E side what was presumed to be stone: a pavement or part of the solid-built has been cut away. The upper surface was hardish but below that like limestone powder. It is clear that the rubble wall rests on this stratum of powdered limestone

Two frags of iron nails have come from the W end

The wind continues exceedingly strong especially at the E end

The powdered limestone is 0.36m deep and beneath that is appearing a deposit of dark brown soil

At the W side the surface level with top of the powdered limestone also appears to be hard-tamped earth. The row of five stones rested at that level. Here we are working from the S and cutting through this level, which might be a later occupation of the tower, in order to reveal the original structure of the tower (or at least a portion of it)

There is a fair amount of coarse-ware pottery

10.55 another iron nail

A good deal of pottery from W is kept separate as (3)

OPM part 1
d 5.90
NMG 1 E (3)

[Faint, mostly illegible handwritten notes in Arabic script]

[Faint, mostly illegible handwritten notes in Arabic script]

[Faint handwritten notes]

35.90

Thursday 3 May 1990

392/6. LB ill and stays at home.
Workers Duma, Amouna, Ftairim, Hadde, Fadwa, Abd.

A reddish deposit of soil with a hard surface has been reached: there is much pottery within it.

It is at a depth of 1.13m down from the lowest edge of the levelling course. I make this stratum (6) because there is

1. top soil
2. rubble
3. light brown soil
4. a thin stratum of gray
5. a deep light brown deposit
6. The red deposit.

392/9

Work continues at W end of this trench removing the rubble and the soil beneath. The EW wall has been defined especially at the E end of the trench but it appears to be poorly constructed, and in a couple of spots to have fallen away. These spots are just to the east of the EW wall of the back of the store, and also in line with this wall. as in 392/6 where the facade wall of the store comes to an end, so in 392/9 the rear NS wall does not appear to continue through the closing-off wall is not so good as in 392/6

Still there is a great deal of soil still to be removed. I guess this would be stratum (3)

As in 392/6 the floor seems equally hard and even.

3.5.90

Main Gate

Weather : clear ; sharp, but warming.
Workers. Younis, Mousa, Hussein, Mohamed el Hand, Hussein
Abdullah, Hamed Aisa, Hamed Saloum (8) = EMG 3

NMG1 Khaled Amir, Oofa, Amouna, Halima Younis, Juma'a Freeda
(for Younis), Azeiza, Azeiza Saloum (8) TOTAL (16)

= 90.196 vS

NMG1 Work continues, basically in centre at S of trench.

7.30 am. a bronze coin found almost centre of trench, at a
depth of 0.48 m ^{down} from the lower construction at the S

At the E face of the trench we have gone down through (1) top soil
with chips of limestone from decayed rubble (2) rubble (3) a rubble
wall of two courses. (4) a deep deposit of powdered limestone
(5) a deposit of red clayey soil has been reached.

The rubble wall is c. 0.50 m in depth; powdered limestone is c. 0.33 m
in the N bank at the E

- 1. top soil 0.05 m
- 2. small blocks of rubble rubble 0.90 m
- 3. a greyish deposit beneath the rubble - roughly level with the
bottom of the rubble wall at E, sloping to W 0.12 m 0.41 at E
- 4. the thick stratum of powdered limestone, also sloping to W 0.21 at E
- 5. a fine light-brown soil at N of trench, and not the thicker
soil at the S.

At the W we are working on the final portion of stratum level with
the powdered limestone - but teams finish this.

2.14 m from E white powdered limestone becomes more mixed with
soil; at that point, it is approx 0.21 m deep.

3.5.70

NMG 1 (4)

- Large wt c/w body shards
- 1 tile frag
- base frag pitthos
- 4 handle frags
- 2 rim frag rg plate, ridges interior
- 1 base frag rg plate
- body frag rg + ribbing
- 1 rim frag echinus bowl
- 3 rim frags mortarium
- 1 amphora be.
- 10 base frags c/w bowls/jars
- 3 frags green glaze
- rim frag flaring bowl
- 2 rim frags coarse ware jars.

3.5.90 EMG 3 (2)

- Small wt coarse ware body frags
- 1 tile frag
- 3 base frags coarse ware bowls/jars
- 1 rim frag c/w jar
- 1 rim + handle frag coarse ware jar
- 1 small body frag bright blue glaze
- 1 rim frag deep echinus bowl
- 2 body frags cooking

One bag

3.5.90

NMG 1

The rubble wall at the E does not reach the tower-structure at the S. There appear to be rather one or two large blocks now very much decayed against which the rubble wall was placed.

2.50 m the N boundary of trench (though this boundary is not vertical from the edge of the trench, part of the wall can be seen right at the N edge of the trench: it is a third course at this point.

This leaves 0.80 m to the S structure of the tower, from the S end of the rubble wall.

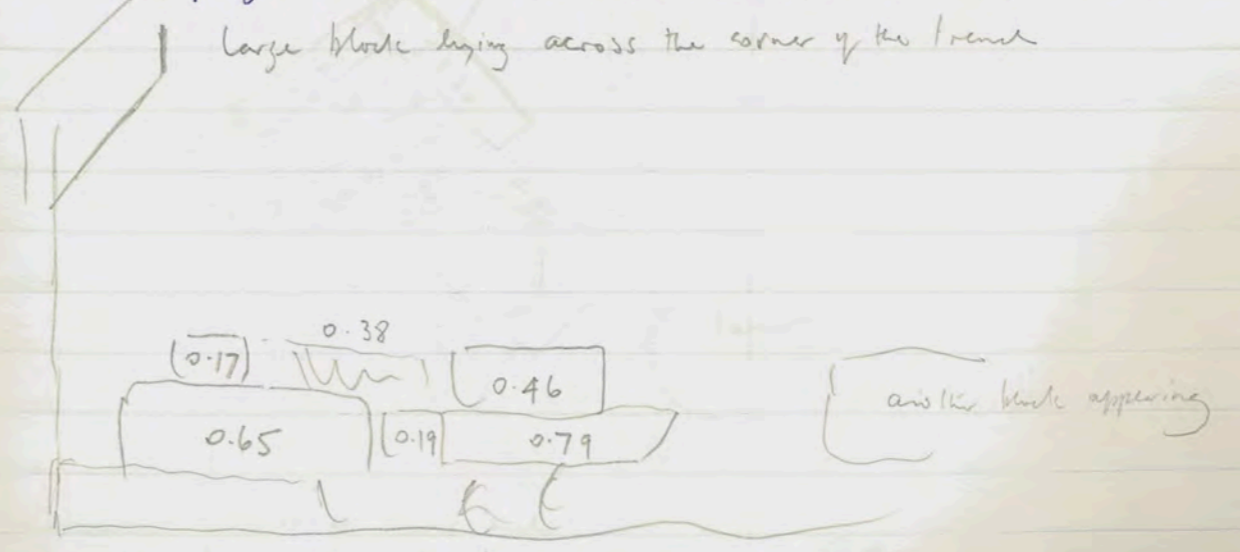
9.50 am NMG 1 work progress still on (4)

11.30 am

EMG 3

9.30 am The wall on the E bank of the trench is unusual in structure for part of the tower. The blocks are quite large but not as large as the normal tower-blocks.

11.30 am frag of glass from near tower structure at W of trench



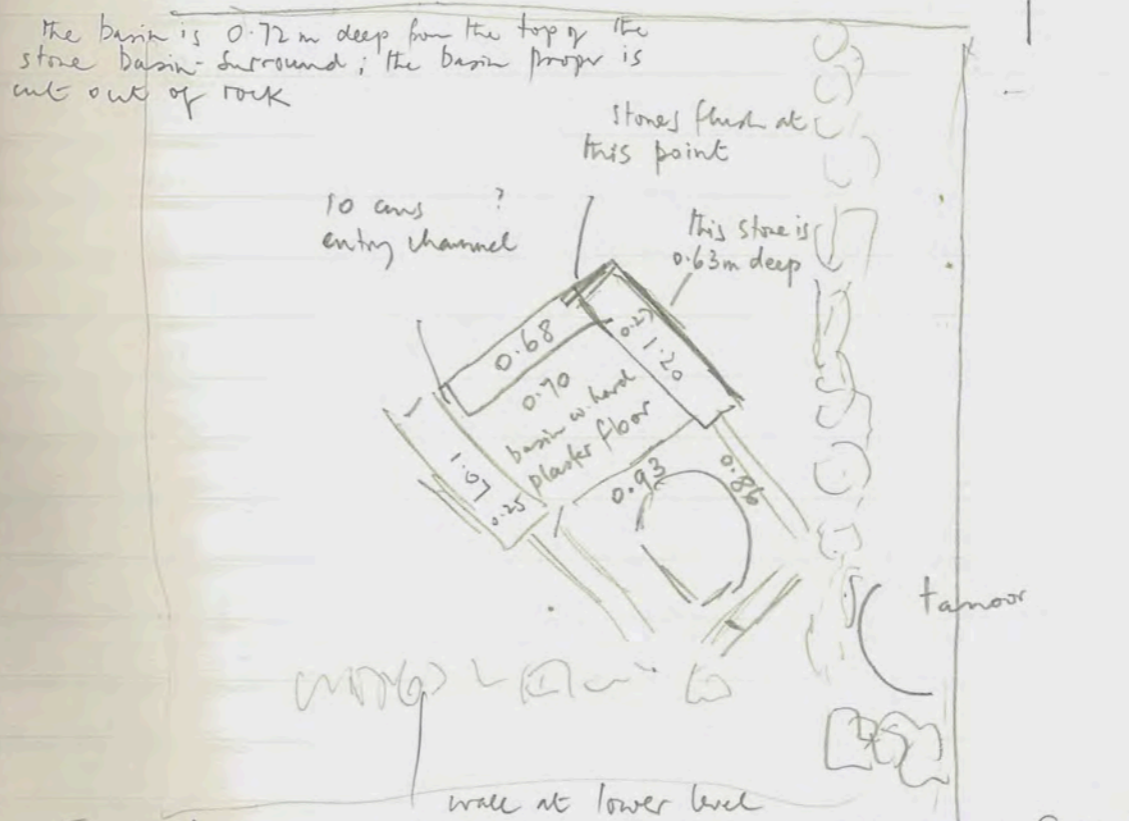
Saturday 3.5.90

208/8 (KB)

This trench remains an enigma (and a worry). In the SW corner there is perhaps the continuation of the ? wall in the NW corner of 208/7 but the remainder is now completely devoid of stones: the surface is soil. This may be thanks to the stirring efforts of Haj Taha but is certainly not the result of heavy work by this team.

It is worth noting that the NS wall at the E of Tadi's new Well-Trench (208/9) does not appear in the N bank of 208/8 and must therefore finish at the EW wall which has formed the S boundary of 208/3 and 208/6 but does not continue into 208/9. There is a wall emerging at S of 208/9 but its upper preserved course is at a lower elevation than that in 208/3 and 208/6. The lower wall is situated also a little to the N of 208/3-6 wall and touches the S edge of the well.

208/9 11:30 am ϕ Roll 3, 5-15 from a number of difficult angles



To the W of the basin the well head is rectangular (square?) composed of contiguous blocks, below that it is round.

5 May 1990

5.5.90

NMG 1 (5) bag 2.

- medium wt work incl. some v. worn tile frags
- 4 blue frags c/w bowls/jars
- 2 handle frags
- 1 rim frag c/w wide bowl.
- 2 joining body frags with painted bands dark-brown/red. inv.

NMG 1 bag 1

5.5.90

NMG 1 (5) bag 1

- largeish 1st course ware body sherds
- 7 base fragments c/w bowls/jars
- 2 rim frags including bowls
- several body frags assorted v.g. r brown glaze
- 1 rim frag flaring bowl.
- 1 rim frag small bowl with ~~at~~ bands paint inside
- 2 rim frags coarse ware bowls.
- 1 body frag ribbed
- 1 handle root fragment cooking ware
- 2 handle frags coarse ware.

Main Gate EMG1

Workers: Munta, Younis, Hamed Asa, Mohamed al Hussein, Hamed Saloum, ~~Mahdi~~, Saleh, Hussein, Hussein Abdullal (8)

NMG1 Khelid Nur, Dopa, Amoua, Halima/Yunis, Jumia, Freeda (for Younis), Azeera, Azeera Saloum. (8)

NMG1 work continues at E + W near the wall at the S. We work in what I have called stratum (5); that is the stratum beneath the deep deposit of crushed limestone which shows up clearly white because there is no admixture of soil. The soil is a light grey colour, hardish on the surface but quite soft beneath. At NWT it seemed as though the white powdery limestone deposit was the result of construction of tower wall. If this is so here it means that there is no floor lower down in this hollowed space.

No internal structures are yet visible.

Note that in EMG3 there is a thick deposit of white limestone powder, at least in the W bank, just below the top soil which is dust beneath through root action. It cannot be a floor and must arise from crumbling of tumbled stones.

9.45 am an ashlar wall begins to appear at the E end of the trench. The rubble wall at the E is aligned with these blocks. Strong wind starts to blow from W

11.30 am in very SW corner at depth 0.74 from top of preserved tower structure: rim frag plate, white birds on bg

5.5.90
EMG 3 (3)

small wt work ware frag sherds

3 frags mortar from tower-structure

1 base frag work ware base.

1 twisted handle frag

1 handle frag

1 rim frag flaring bowl

1 bowl frag

1 handle rock frag cooking bowl.

One bag

5.5.90

EMG 3

Work continues at N end of trench where there are several large blocks of rubble. These are removed as the deposit of soil and limestone around them is taken away. Further large blocks are revealed in the structure at the NW end of the trench.

9.30 am We are now working at a level more or less equal to the top of the first fully preserved course, that is the second course from the upmost preserved wall blocks. At the E of the trench there is a jumble of large field stones.

After the removal of the large blocks there is considerable soil and debris to take away.

11.45 Dig rim frag of glass from NE corner.

I have called today's work Stratum (3) because of

- 1. top soil.
- 2. crushed + powdered limestone especially at W of trench

3 (below level of preserved courses of tower structure) a deposit that dries somewhat grayish; it is a mixture of soil and limestone

6.5.90
EMG 3 (3)

- 6 handle frags
- 10 rim frags c/w jars
- 4 rim frags echinus bowls
- 1 rim frag burnished gray ware
- 6 base frags c/w jars
- 1 rim frag flaring bowl notched upper surface
- body frags rg + bg.
- 1 rim frag ware bg.
- 2 rim frags semi coarse bowls.
- 1 whet-stone (?) frag.
- pebbles.

Sunday 6 May 1990

Weather cloudy in E but clear sunny still at first
 Workers: EMG 3 Younis, Hussein, Munira, Saleh, Mohamed Al-Har
 Hamad Hisa, Hamad Saloum, Hussein Abdullah (8)
 VMG 1 Younis, Jumia, Amour, Aziza, Aziza Saloum
 Khalid, Oofa, Halima. (8)

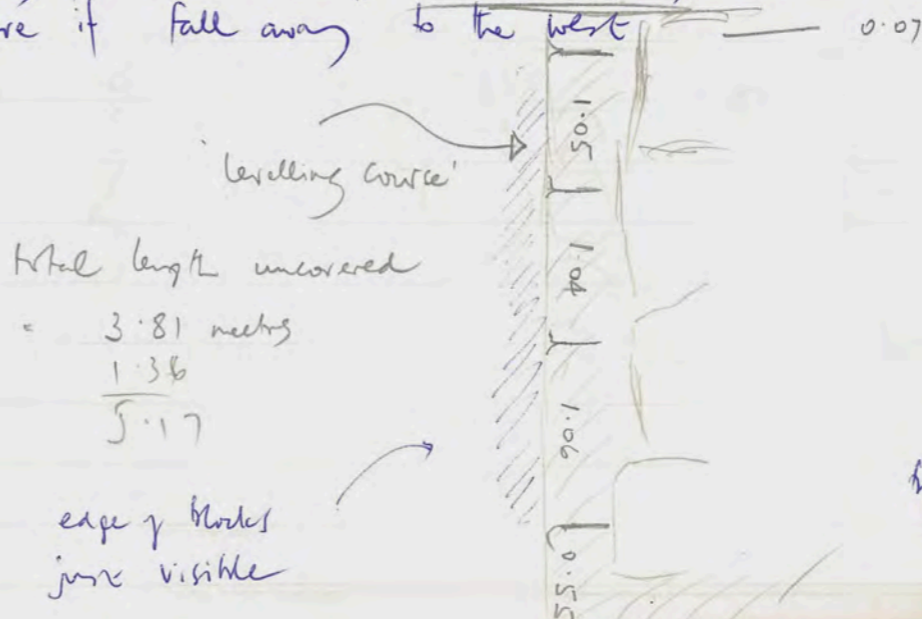
EMG 3

Work continues on what I yesterday designated (3) in the very NW corner to clarify what happens to the tower-structure there: in the very SW corner where the edge of the wall has not been quite revealed. more or less central in the trench where the deposit is not quite level (that is to the W of the tumble of stones)

10 am. EMG (3) rim frag of green glans
 with two impressed lines on exterior

The N corner of the tower-structure has now been made plain; it is 1.36m from the S boundary of the trench.

The odd structure of the tower-structure at the S that I commented on before is seen more clearly now. What I might call the levelling course (though there are certainly blocks below it) that is the topmost fully preserved course, is itself nicely aligned whilst the added blocks above it fall away to the west.



10.50 am. Frig
 frag of glans
 central section

11.30 small frag of
 handle (? coin)
 not recorded
 as coin

JTC
6.5.90 NMG 1 (5)

medium wt c/w body sheds

4 handle frags (one 'twisted')

1 amphora toe, friable red clay

1 handle frag red paint

3 base frags c/w knobs/jars, one with red paint - lit drip on ext.

1 rim frag flaring bowl

2 rim frags c/w jars

5 rim frags attached on bowls

3 tile frags small + worn

1 infanterium knob

6.5.90

NMG 1

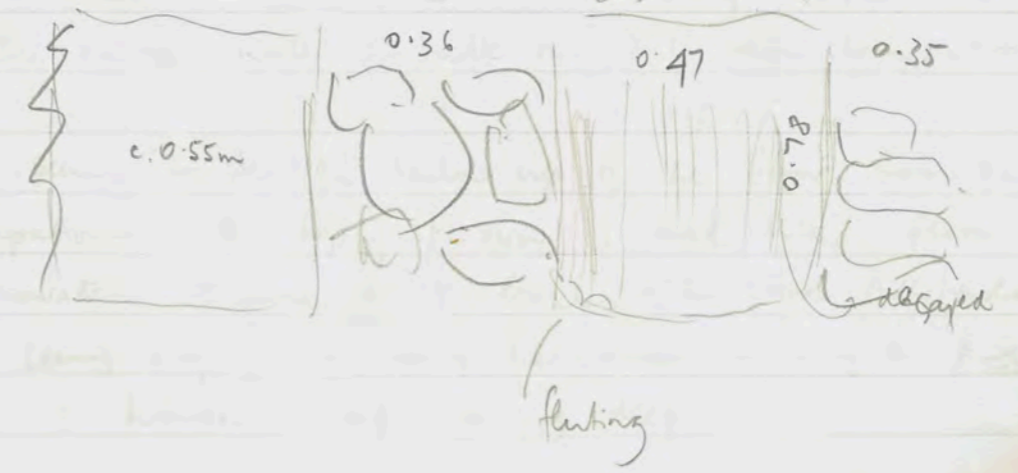
Work continues on (5) in the N part of the trench. We cleared about one half of the area yesterday.

10.50 am strong wind picks up from W

11.40 am At the W, in centre, a substantial deposit of crushed limestone seems to be appearing. The depth is approx 0.79 from the top of the tower structure at the S or approx stored 1/2 ashlar blocks down from tower structure at E. This may or may not amount to something.

12 noon. ϕ (392/8) W end of trench with reddish fluted column down ^{at N} and a large ashlar block (decayed) at S and the space between them blocked; rubble also at W of column down. This wall is further W than the W wall of the store, the completion of which is marked by a large horizontal block at the floor level.

Near the column down 2 large rim frags of a large bowl (2 ϕ) + 2 clay loomweights (wt 2 ϕ) $\phi = R3, 24-29$



not recorded
no coin

Monday 7 May 6.5.90

208/8

8 am. In the SE corner we seem to have come to a hard clay surface. This reddish clay does not appear in the N wall bank of D7 (208/7) where there is top soil, tumble, a light brown powdery deposit c 0.34m, then a stratum with a heavy mixture of pebbles: depth at present c. 0.48m: there are large chips of stone in it also. We stopped at this point, assuming (I think) that the level produced from the threshold of the doorway would be the appropriate level. In the SE corner of the trench where a deeper cut was made no lower floor can be detected: the first stratum is heavily packed small rubble (to build up the floor) and it includes a large stone which is a good indicator of a rubble fill: it lies level with the top of the wall at E which appears to be under this floor: this should mean that these walls were destroyed in a later occupation.

The construction under the exterior of the door shows that the doorway belongs without doubt to the first construction

In 207/1 immediately to ^WE of D7 the stratigraphy of N bank

- ① top soil,
- ② small tumble,
- ③ light brown deposit,
- ④ rubble fill above the level of the floor previously described (it is now washed clean of soil because of winter rains),
- ⑤ then a powdery deposit with small flecks of limestone above a
- ⑥ red clayey stratum with pebbles - which is immediately above bed rock, at the W the rubble wall is built on this red clay stratum

④ seems to be the build up of the floor from the earliest occupation: the top of it now is level with floor as left unexcavated because it is level with stone threshold of the door. This seems right as being the final level of the first occupation

④ is between 24 + 33 cm deep

IS THERE A DRAWN STRATIGRAPHY?

7.5.90

EMG 3 (3)

medium wt coarse ware body shards

2 handle frags

6 base frags coarse ware bowls (one with streaks red paint)

1 rim frag rg jar

1 rim frag rg bowl

3 rim frags c/w jars

1 flaring rim frag.

1 small body frag rg.

2 body frags streaks red paint

7.5.90

EMG 3 (3)

medium wt coarse ware body shards

1 amphora toe

6 handle frags

8 base frags c/w jars

4 rim frags c/w jars

1 rim frag wheel rg jar

4 rim frags echinus bowls

1 rim frag wheel by bowl

1 rim frag flaring rim stitched upper side

1 small rim frag cooking ware

7.5.90

EMG 3 (3)

many large frags of c/w jar/amphora. one frag w. hole

1 amphora toe

1 base frag

2 rim frags gray ware bowl

1 rim frag c/w bowl

1 rim frag mortarium

1 handle frag.

Monday 7 May 1990

Weather: slight clouds, sunny, cool breeze from W

Workers: NMG 1 Khalid, Jumaid, Halima, Younis, Aziza
Aziza Saloum, Amouna, Oofa (8)

EMG 3 Younis, Saleh, Mohammed, Hussein Abd,
Hamad Saloum, Hamad Hisa (6)

Hussein (7am) (7)

EMG 3

Work continues on W part of trench in (3). There are two small areas of soil against the tower structure which will soon be cleared. The largest rubble to the W of centre seem now not to be a wall.

7 am measuring out tower structure + gate with B. Rooney

10.40 much bone (in a small bag) collected from gate near the tower structure

12.10 pm. at S wall of trench in the E sector (the W sector is defined at the moment by the large rubble tumble)

a large limestone block appears: it is perhaps laid horizontally but its upper surface slopes down to the N. The soil is almost cleared down to the level of this stone. Following this we will work against the wall again in 2 or three spots from S to N.

at W rear wall the same hard limestone surface we clear down to this.

frags mouse shells
frags glass (tiny)

7.5.90

7.5.90

NMG 1 (5)

medium wt coarse ware body frags

3 frags tile

1 ring-handle frag

3 base frags coarse ware jar

3 rim frags c/w jar.

1 notched-rim rim frag.

1 rim frag cooking ware + 1 body frag.

3 rim frags echinus bowls

1 rim frag flaring-rim bowl

1 neck frag bottle

body frags rg (1 = rj + bg)

1 rim frag bottle?

7.5.90

NMG 1 (6)

small wt coarse ware body shards

3 base frags c/w jars

1 base frag coarse rim bowl

1 rim frag coarse ware jar

3 rim frags echinus bowls

2 body frags cooking ware.

1 frag basalt

1 frag lime mortar.

2 body frags rg.

1 rim frag mortarium

NMG 1

Work continues on (5) from about 50 cms towards the N bank of the trench. Still a quite unexplored space. There must be an entrance to it on the E side (most likely); but how to locate it?

8.40 am In the NE corner of the trench a soft dark brown stratum is interposed between the thick deposit of light brown soil, it is 0.20 m down from the top of the ashlar blocks of the tower-structure and is 0.03 m in depth if extends c. 1.61 m from the E wall of the trench as far as I can judge at the moment

Against the E wall the light brown soil is very soft even though it is filled with small chips of limestone.

I isolate some of the dark brown soil and take a sample for study. There are streaks of a buff-colour in it but it contains no pebbles etc. Stratum (5A)

9.30 At the W we begin on a lower level it is still light brown loose + filled w chips. This should then be (5) still.

11.15 Sample of charcoal taken from the dark (red-)brown stratum (5A) NE corner not yet quite completed

Across all the width of the trench is a white powdered limestone vein it reaches to about 10 cms near the S wall and perhaps 1.60 from W to E In the centre the light-brown deposit is soft.

12.20 Stratum (6) is begun, against the S wall to the E of the powdered limestone. This however is just the area of the robber pit which has become filled in during our excavations

Tuesday 8 May 1990

8.5.90

NMG 1 (6)

- 1 m and handle for wave wave antenna
- 2 tile for
- 1 shoulder for w/jar.
- 2 joining for angled vessel (new breaks on 3 sides!!)
- 1 m for flaring bowl.
- 1 m for by bowl



90.272 hand moulded to figure for (horse? bird?)

i.e. ledge for flooring at first level

Weather clear, sunny: cool breeze from W.
 Workers NMG 1
 Younis, Amour, Khalid, Juma, Halima, Azeza, Azeza Saloum
 Dofa (8)

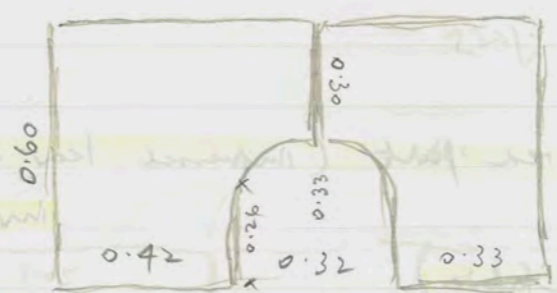
EMG 3 Younis, Saleh, Mousa, Mhamad, Hamad Aisa
 Hussein Abd, Hussein, Hamad Saloum. (8)

NMG 1
 Work continues at W and centre against the S wall. At the centre in the area opposite the drain in the wall. I think I might concentrate on a 1.50 m section at S, measured from the wall of the tower structure

I call this stratum (6) but it is perhaps equal to (5) of the previous days

6.45 I have measured out the 1.50 from S wall and almost immediately a faultly channeled stone begins to appear leading to the drain. The hard-packed limestone at the W may then be the floor level

7.30 a small shallow basin begins to appear in front of the drain. The drain has a rounded top.



in the E 'bench', at join with S bench is a hole which also looks like a drain might have to excavate deeper

At E of this drain along the wall is a narrow stone 'bench' this 'bench' is also located along the E wall so far as we have excavated. The bench is 0.30 m wide. The bench continues W of drain also though this is not fully excavated

Phi End of work today R A, -22

8.5.90

EMG 3 (6)

- very medium lt work were heavy frags
- 2 worn brass tiles (small: one on fan tile)
- 5 base frags work were bowls/jars
- 1 base frag fine rg bowl.
- 1 flint
- 1 hard stone frag.
- 1 handle frag
- one on frag 'bottle' - red paint
- 4 on frags work were bowls/jars
- 1 strap handle frag red paint
- 2 on frags edging bowls (one tiny)

8.5.90

EMG 3 (6) bag 1

- large lt work were heavy frags.
- 6 base frag work were bowls/jars
- 1 large handle frag w thumb impression at base
- 1 small handle frag w red paint
- 1 edging bowl on frag. thick fabric red paint
- 1 large on frag edging bowl? (straight rim)
- 5 on frags work were jars
- 1 iron frag rg bowl
- 1 nozzle frag lamp red paint (impressed tear drops)
- 1 on frag rg bowl (fine fabric)
- 1 on frag gray ware edging bowl
- assorted bag frags rg of various qualities
- 1 bag strainer? cooking ware



8.5.90

EMG 3

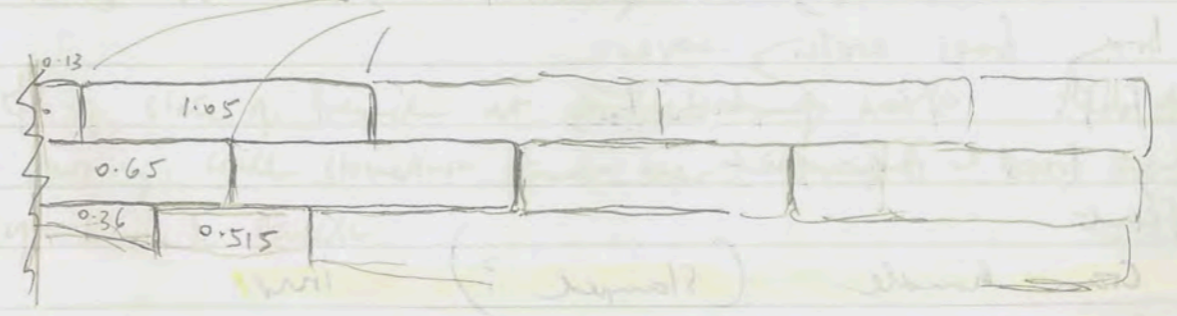
At the S we follow the deposit down the slope to the N. Inspection of the bank at the S shows

1. top in varying depths, depending on position of rubble
2. rubble
3. powdered white limestone which is thick at the wall and near it and decreases to the W?
4. a light-brown soil deposit
5. a narrow band of crushed + powdered limestone, beginning on a with the top of the leveling works (3 are visible at the moment)
6. another deep deposit of light brown soil.

stratum (3) then (as perhaps I decided with NW Tower)

would be the limestone powder from the destruction of the wall the more modern times.

The construction of this face at the S differs markedly from construction of at the N. At the S are thin comparatively regular blocks; at the N 7.15 on. almost a full Zenith of shadows already



8.5.90

EMG 3 (7)

medium WT coarse ware body sherds

4 base frag coarse ware bowls

frag cooking ware

1 rim frag echinus bowl red part

1 rim frag echinus bowl drip part inv.

8.5.90

EMG 3 (6) Bag 2

large WT c/w body sherds

2 frags tiles (1 cover tile)

8 rim frags c/w jars

2 handle frags.

1 handle frag with added 'knob'

16 rim frags echinus bowls many red-drip part

1 rim frag rg talle

10 base frags c/w bowls/jars

2 rim frags semi coarse notched rim bowls

1 body frag gray ware

4 rim frags cooking ware

2 body frags cooking ware

3 frags c/w amphora bases

body frags red part

1 flint

* 1 Coan handle (stamped?) inv

1 body frag frags in white on dull black. inv.

8.5.90

EMG 3

10.45 am frag of glass (tiny)

I have now called this (6)

There are now 2 zambils full of pottery frags

there also 1 label (6)

Φ of Jack's trench 333/7 to show drain align = E/W
 if it is made of mortar and was perhaps poured between the
 stones that line it on each side. The W end had not however
 been properly cleaned. Jack then would measure another trench
 to E of 7 = 333/4 = (7)

12.10. a stone perforated ball from near the wall at N end
 the soil is black with reddish patches. There is a space of wall at
 the N which has this soil next to it. Further S the crumbled/
 powdered limestone reaches right to the wall. Perhaps the crumbled
 limestone is the debris from the construction of the wall. I shall
 excavate a metre wide in the hope of finding some object which
 would help to date the construction of the towers and gate

12.45 a frag of stamped amphora comes from (7), but it
 looks too worn (and broken) to be legible: Coan handle. = 90.274

Φ of state of trench at completion of work Roll 4,
 showing wall structure and one showing (I hope) the stratigraphy
 of the S bank.

9.5.90

EMG 3 (7)

- quite medium wt coarse were sherds
- 3 rim frags coarse were jars
- 2 joining fr rim frags notched rim bowl (one is tiny)
- 1 handle frag w 2 slight ribs
- 1 rim frag echinus bowl
- 1 rim frag semi coarse fine ware bowl non-notched
- 1 coarse ware body sherd w. pierced hole
- 2 body frags cooking ware
- ? 1 body frag coarse ware with painted broad brown band between yellow lines semi-coarse body frags.

9.5.90

EMG 3 (8)

- medium-large wt coarse ware body sherds
- 5 base frags coarse ware jars or bowls (one with red paint)
- 2 rim frags c/w bowl
- 1 handle root frag
- 1 handle frag cooking ware
- 1 rim frag cooking ware
- body frags cooking ware
- by + rg frags
- 2 joining rim frags fine rg straight fine bowl inv.
- 1 body frag c/w: tip of rim in red.

Wednesday 9 May 1990

Weather: steady clouds but sunny, cool breeze

Workers

NMG1 Younis, Khalid, Juma. Aziza, Aziza Saloum, Amouna, Halima, Oopa. (8)

EMG-3 Younis, Saleh, Mohamed, Mounsa, Hussein, Hamad Asa, Hamad Saloum, Hussein Abd (8)

EMG-3

Work continues on stratum (7) which is level with the 5 block down of the soles. Here I am working at only a metres width from the wall in order to concentrate efforts on revealing the construction. At the N end the chipping soil was left against the wall. At the S it seems to be rather "solid" crumbled limestone.

There is some piling from the N end (at the S to far 7.20m) but not as prolific as yesterday

Even at the N there is quite a marked deposit of crushed limestone from about 20cm away from the wall.

After the S end of the large block 5 down we work at both N + S in a deep deposit of crushed limestone which at the South is 34cm deep.

Near the corner of the wall (which is not yet cleared along its N side) there is largely a light brown soil still. One nice rim frag fine rg bowl has come from here - level with the 6th block from the top. There are patches of quite a marked red-brown in this deposit. Better call this (8)

9.5.90 NMG1 (7)

c. 1 doz coarse wave shelly

9.5.90

NMG1

At the end of yesterday's session I decided to continue digging in the SE corner of the trench because the deposit below the level of the stone bench, though full of limestone chips appeared to be reasonably soft and not hard-packed, and also because there appeared to be a circular hole in the face of the 'bench' in the SE corner. One sweeps the limestone hard-packed floor.

Therefore this morning we continue, on this chippy section the blocks along the S wall are 'bossy'

Call this stratum (7) this by 7.55 am. only one body fragment

EMG5 = entrance: N Tower

At NMG we also measure out a trench 5+5m to the N of EMG1 but leaving a 5m space equivalent to NMG1 immediately to the W. My aim with this trench is to locate the entrance into the interior of the tower. This should be somewhere near if not in the centre of the tower. In order to obtain maximum results with minimum effort I reduce the EW dimension of this trench to 3m, since this should leave me with sufficient space to uncover the wall whose corner is found in EMG1

11:30 am. We are digging through pure crumbled/powdered limestone mixed with limestone chips in the SE corner of the trench - though not yet cleared to the bottom of the blocks that form the bench.

TOP 2 P

9.5.90 N.M.S.L. (7)

9.5.90

EMG 3 (9)

a few c/w brick sherds

2 tile frags

amphora toe frag red fabric with frag core + red centre

amphora handle frag ditto

1 rim frag c/w jar

1 base frag c/w bowl, whole part int. handle drops exterr.

One bag

EMG 2 = entrance: N Tower

9.5.90

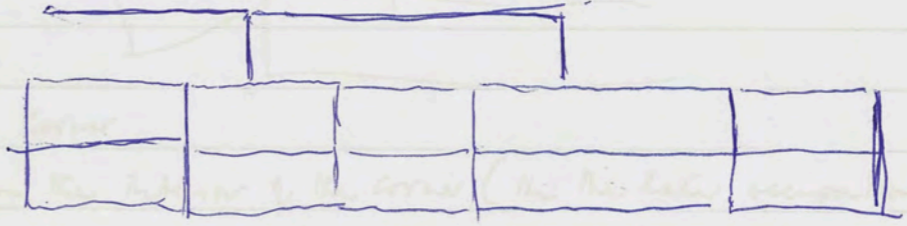
EMG 3

11:35 am At the South still cutting through limestone powder. At the N 6 courses are showing now. Some large chunks of limestone are lodged against the wall in the centre of the trench.

The third and fourth courses from the top of the socle have matching joints.

11:40 we begin on a block stratum near the middle of the trench = stratum (8)

There is still limestone at the N.



11:45 Go to photograph NW tangle. Note that the door between Room 3 and the courtyard which we suggested last year was a later addition to the wall of substituted for the door.

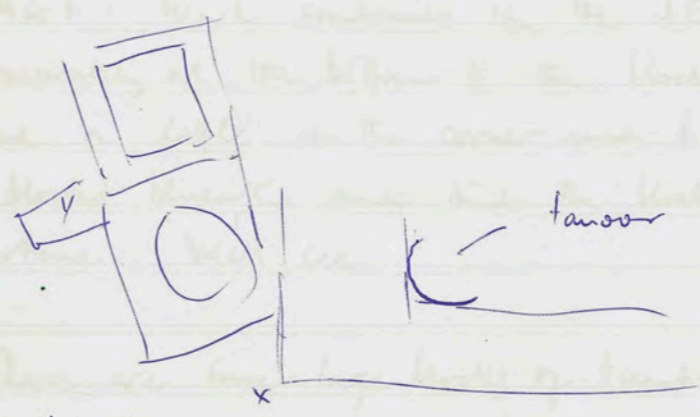
Life to it. It will be especially strange, belonged to a different house. Originally it would have been the entrance from the courtyard (which at that time extended further W) to Room 3 which has been sealed before (kitchen/pantry) also extended further W. Probably to note that the only EW wall to go down to level 3 is the

33 - says for the low wall to be of a different material. In the wall the hole into the tower (see above) which was once the E wall - the S wall of 201/9 is a different material. The floor built up on the NW wall is a different material. The floor built up on the NW wall is a different material. The floor built up on the NW wall is a different material.

9.5.90

208/9 etc.

A number of new aspects of this year's excavation provide new facts but also seem to substantiate some of last year's theories. The wall immediately to the E of the well/cistern rests on soil. It therefore belongs to a later occupation and seems to cut off the well from its original House 2 and place it in another house. Note that there is a corner in the wall.



x = corner

and on the interior of the corner (in the later occupation) is a tanour. The small room in the SE corner of the courtyard could have been built at the same time as the subdivision. Note that the door between Room 3 and the courtyard which we suggested last year was a later addition to the wall is substituted for the door a little to its W which we originally thought belonged to a different house. Originally it could have been the entrance from the courtyard (which at that time extended further W) to Room 3 which as I have described before (bench, tanour) also extended further W. It is interesting to note that the only EW wall to go down to bedrock is that in D3 — except for the low wall to W^{S?} of cistern which is built on bedrock. The wall with the corner (see above) clearly runs over this S wall. The S wall of 208/9 ∴ belongs to the original occupant. We can see again the floor built up with an frag soil + rubble in EW placed stone at the cistern is also suggested to be support for the floor level.

Other revelations are in stone

Thursday 10 May 1990

Weather cloudy wind dies by 6:30
Workers NMG 1 Younis, Khalid, Amour, Aziza, Aziza Saloum
Juman, Halima, Oofa (8)

EMG 3 Younis, Mohamed, Hamed Aisa, Hussein, Saleh,
Monsa, Hamed Saloum, Hussein Abd (8)

NMG 1 Work continues in the SE corner where we are now approximately at the bottom of the blocks that form the bench. I probed a little in the corner and it seemed as though there are no blocks beneath and that the blocks rest on this couche of crumbled limestone. Well see

There are some large blocks of tumble at the E end; one rests against the join of the 1st and 2nd blocks of the S wall

Very few pieces of masonry today and very few yesterday
7:35 a block below the 'bench' top appears at the E end. Therefore the large block of tumble at the SE is removed.

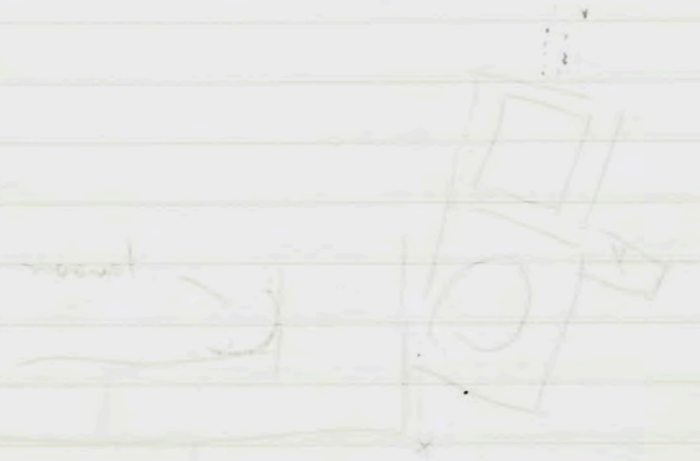
8:30 a very large rough boulder appears in the crumbled limestone deposit. It would appear that the walls are built on bedrock but that the space was filled with rubble and crumbled limestone (from the construction) and that therefore the "ground level" was equal to the level of the bench
10:20 from this stratum (7) near station 2 course a fragment of a ? limestone lamp.

10.5.90

NMG 1 (7)

8 bag bags work were

1 rim bag work were jar inv.



10.5.90

EMG 3 N (8)

Large wt coarse ware body sherds.

2 small frag tiles

frag frags looking ware

1 handle frag + 1 rim frag looking ware

1 toe frag amphora

12 base frags c/w jars or bowls

4 rim frags c/w jars

1 rim frag mortarium inv.

7 handle frags c/w jars

7 rim frags echinus bowls.

1 profile frag fin? plate

10.5.90 EMG 3 (8)

Large wt coarse ware body sherds

inc. fragments of large pillows

frag frags looking ware

5 rim frags c/w jars

1 rim frag mortarium inv.

1 small body frag fine bg

2 body frags dull bg.

10.5.90

EMG 3

Continue working in stratum (8) near the wall this is largely a black soil with some admixture of limestone chips. Near the corner of the wall the signs are that we are approaching bedrock. There is some coarse ware pottery here and over the last few days there have been considerable amounts of bone

8.45 a full central of pottery from the S area of the trench (in this narrow portion against the wall) change central.

9.40 a handle frag of bg comes from S section level with the 5th course from the top (of the socket) to the E of the metre wide spit along the wall another 'shelf' of deposit is developing. This represents a deposit of crushed limestone from which the dark soil was kept secret.

10.5.90 EMG 3 S (8) bag 2

Large wt coarse ware body sherds

- 6 rim frags looking vessel (4 joining)
- 1 rim + shoulder frag c/w jar
- 1 body + handle rest frags c/w jar with horiz. ridge rim
- 1 handle frag
- 1 body frag with base + strokes bright red paint.
- 1 object
- 1 handle frag fine bg skyphos vell 5
- 1 rim frag echinus bowl ext bands colour/presence: int. rg.
- 1 rim frag echinus bowl
- 2 rim frags c/w jars
- 1 pebble

12.5.90

NMG 1 (7)

- 10 c/w body sherds
- 1 m frag fine mortarium (red paint)
- 1 m frag fish plate
- 1 m frag semi-course bowl/jar
- 1 drop-m frag plate red paint upper.
- shady lower block: lower

One day

Saturday 12 May 1990

Weather: clear, sunny, stiff breeze at first from W

Workers: NMG 1 Younis, Juma, Halima, Oopa, Amouna

Khalid, Aziza, Aziza Saloum (8)

NMG 3 Mhamed, Younis, Hamed Aza, Hamed Saloum,

Hussain, Saleh, Hussain Abdallah, Mouna (8)

NMG 1

Work continues in (7): the powdered limestone deposit

6.30 am a frag of an iron nail. It is said that another block lies beneath the two already exposed

8 am. We are now 1.30m down from the flat top of the bench and still the deposit of crushed limestone continues. As a result there are signs of a red-brown soil encrusting in the centre of the spit at this depth: at the centre but away from the wall. I thought I had signs that the deposit near the wall was composed of fist-sized chunks of limestone more loosely packed with holes.

Large chunks of ⁱⁿ coarse limestone keep appearing

10.05. We seem to have reached bedrock which also appears to be rather level

judged by the inclination of the wall on the N side. NMG 3 are some 5m higher than the S boundary at the E. Y. The S boundary NMG 3 has been deemed to be level against the wall and the a foundation level set at the N end.

More large holes

today

OPPI ...

12.5.90

EMG 3 (8)

small wt c/w brick studs

no. frag near anyone for

1 pitios on frag.

1 frag semi conc base



1 the frag edges have int. red ^{ext.} brown at rim, reserved, red brown

one handle frag c/w with bulfor-like stella added

12.5.90

EMG 3

At the S half of this trench we are able almost immediately to clear to bedrock and deep. The lowest course sits on the bedrock as it rises to the S. At the very S end of this trench, the soil comprises 5 courses; at the corner, the soil comprises 8 courses, thous 2 of these equal the deeper 5th course from the top since two long thin blocks are substituted for the approx. square blocks of the rest of the course.

At the N end of the trench, beyond the corner of the tower, we are cutting through a red soil which is level with the 7th course of the soil. It is an extremely hard deposit

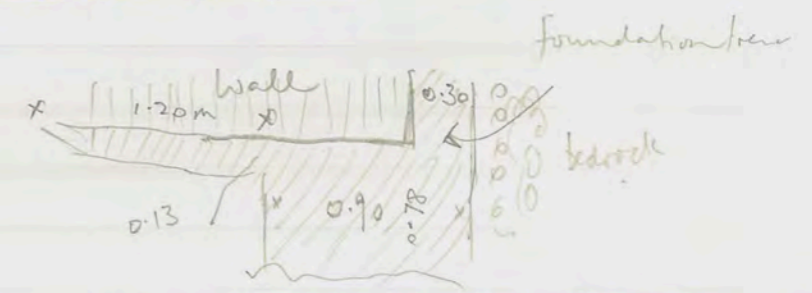
8.15 a small piece of black stone cylindrical from just above bed rock near the corner of the wall.

During the early hours we measure out EMG 4 at the S tower in an attempt to locate the SE of the S tower. The trench measures 5x5m and is situated 8m S of the S boundary of EMG 3. The principal requirement was to give sufficient clearance within the trench to the presumed corner, therefore a repetition of 8m space between EMG 1 and EMG 3 seemed appropriate. The presumed corner is judged by the continuation of the wall as revealed in EMG 3 and some in situ blocks, which look as though they would be the S boundary at the E of this S tower.

EMG 3 has been cleared to bedrock against the wall and shows a foundation trench cut at the N end

More large boxes today

EMG and Roll A



14.5.90 at B + 1.5 Roll 5 -> 3

Sunday 13 12.5.90

ENG 3 = S Tower, E face (outer)

The lowest block of the levels, course at the far S has the letter A below cut into it. It has plaster / mortar filling various uneven gaps to N+S; its upper S corner is keyed.

NM6.1

Still working on removing rubble, clearing with a bit of help by 6.30 on clear base of foundation. Some was cut, we work on that clearing away first - see clouds of brickwork as well as protruding concrete. The blocks above level are big and not regular vertically.

7.15 am. Have cut down to level of ground on the side, exposing the foundation level. It is deep and wide against the S side. At the top on the shelf of rubble, a line of the hard red rebar (above level). We found to remove this and to tidy up a little. The thing was under extremely heavy load, a bit of a work of time.

Work completed at 7.55 am

see 30.5 for further sketching of levels.

11.15 am photos of level completed trench 364/2 from E with details of 'structure' at SW corner.

We found that there is a floor here; it is certainly laid out on the S facing of the base.

phi also R5, -12 of Jack's door will show some work details.

Sunday 13 May 1990

Weather: clear, sunny, strong cold wind from West
workers NMG 1

Younis, Khalid, Juma, Amara, Oofa, Aziza,
Aziza Saloum, Halima (8)

(Ali)
EMG 4 Younis, Hussein, Mohamed, etc (8)
Substitutes etc.

NMG 1

Still working on removing crumbled limestone above bedrock
By 6.30 am clear that a foundation trench was cut; we
work in that clearing away foot-size chunks of limestone
as well as powdered limestone. The blocks above bedrock
are big and not aligned vertically

7.15 am Have cut down to bedrock against the wall,
exposing the foundation trench which is deep and wide
against the S side. At the W, on the shelf of
bedrock, is some of the hard-red regolith (above bedrock)
We proceed to remove this and to tidy up a little.
The strong wind makes meticulous sweeping today a
bit of a waste of time.

Work completed at 7.55 am Bk 2
see 26.5.90 for details on see 30.5.90 for sketch
north wall at E stratigraphy N bank.

Roll 5, 1- (B+W)
11.15 am photos of Leah's completed trench 364/2
from E with details of 'structure' in SW corner
We presume that there is a floor here; it is certainly
hard packed in the S portion of the trench

φ also R5, -12 of Jack's drain with area against
wall cleaned.

05
13.5.90

(mirrored) 13.5.90 = 2.10.90

the lower levels of the structure are not for 2 but the
upper levels are for 1. The structure is built on a
level of 1.2. The structure is built on a level of 1.2.

13.5.90

NMG 1 (7)

2 c/w body sherd

13.5.90

EMG 4 (at South Tower)

Work continues at top soil. A jumble of stones appears. There is nothing immediately below the surface at either the South or the East.

EMG 5 (N) ①

13.5.90

EMG 4 ①

- Small lot coarse ware frag shards
- 1 min frag echinus bowl
- 1 min frag fine plate (flaring bowl)
- 1 min frag c/w jar
- 1 base frag rg bowl
- 1 handle from frag
- 1 handle frag
- 1 shd base frag c/w bowl/jar
- 1 min frag green/glaze ware
- 2 joining base frags heavy fabric c/w jar + body frag w handle rest

13.5.90

EMG 5

Work begins on top soil at 8.00 am. There are a number of large blocks of humus showing above the surface soil

13.5.90

EMG 5 [N] ①

1 doz @w shears

1 m bag eelworm 'plate' * red paint now streaky

1 base bag c/w japhal. ext: white black paint

int. 2 /ch impressed lines near base.

one bag

1 frag kault mortar.

13.2.20

EMR 2

Number of top layer of timber (now) above the surface will be 800mm

EMR 2 (n) 1

One day
I had to look at the
it. I had to look at the
I had to look at the
I had to look at the

13.5.20

House 2 Second phase. Complete plan.

