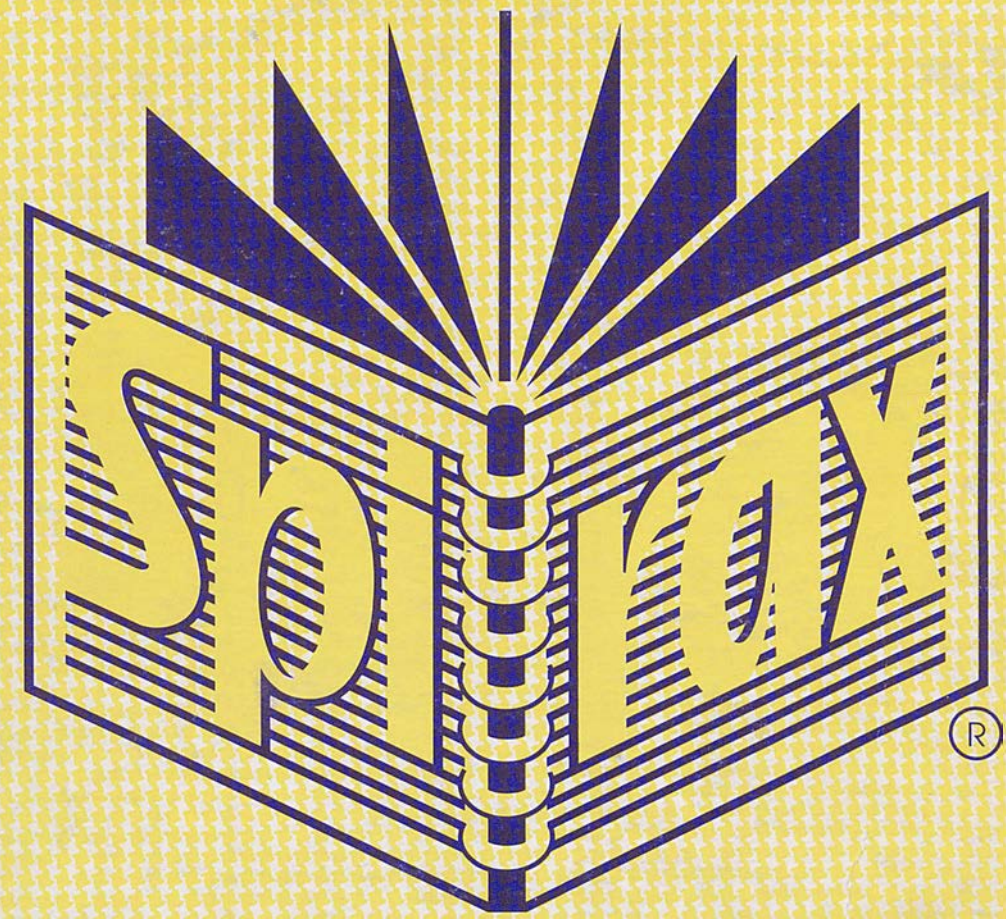


1990



A4 NOTE BOOK

No. 595

JK 1990.
208/8; 207/9; 207/8 Kate Burnett.



09/20/90

09/20/90

1. Small quantity of heavy debris
 2. 1 cooking stove
 3. 1 wooden cabinet
 4. 1 wooden chest
 5. 1 wooden chest

This bench continues from 20817,
 in an attempt to define the room
 found there (entrance from street).

A later occupation wall remnant was
 found in the NW part of 20817. It is
 also hoped to establish whether or not
 it is a wall.

Today we commenced c
 today. I bag pottery



208/8

24/04/90

1. Small quantity cw body sherds
2. 1 cooking ware body fragment
3. 1 fragment roof tile
4. 1 grooved cw bowl rim
5. 1 cw bowl base

2

208/8

24/04/90

Workers: Turkeyia, Zaqueya, Hadj-ta-ha,
Hadeqia.

Weather: Hazy, cool, strong breeze

This trench continues from 20817,
in an attempt to define the room
found there. (Entrance from street).

A later occupation wall remnant was
found in the nw part of 20817. It is
also hoped to establish whether or not
it is a wall.

Today we commenced clearing topsoil.
(stratum 1)

Totals: 1 bag pottery

OP/208/8

28/04/90

① ①

1. Medium quantity cw body sherds
2. 4 fragments roof tiles
3. 1 cw large bowl rim, flaring outward
4. 3 cw handle fragments
5. 2 cooking ware body fr
6. 2 oblong cw fr, indeterminate function
7. 3 cw medium bowl rims
8. 1 mw shallow bowl rim fr, traces red glaze
9. 7 cw bowl base fr (V. small)
10. 6 cw bowl/plate rim fr (V. small)
11. 6 cw jar rim fr
12. 1 fw ds red gloss glaze body fr
13. 5 mw " " "

NB. The pottery is all very worn

OP/208/8

28/04/9

Weather: Windy + very dusty. Warm.
 Workers: H.T; T; Z; H

Continuing to clear topsoil.
 The surface is covered with large rocks, but there is nothing distinguishable as wall.

Totals: 1 bag pottery

208/8

29/04/90

① ①

1. Medium quantity cw body sherds
2. 7 cooking ware body fr
3. 1 ds green glaze body fr
4. 4 mw ds red glaze body fr
5. 2 mtw ds red glaze body fr
6. 1 mw ds black glaze v. small body fr
7. 1 cw jar handle fr
8. 1 cw handle root
9. 4 cw plate / bowl bases fr
10. 3 cw bowl rim fr
11. 2 cw plate rim fr
12. 4 cw echinus bowl rim fr

② ②

1. Small quantity cw body fr
2. 4 cw handles
3. 2 cw handle roots
4. 2 roof tile fr
5. 2 cooking ware body fr
6. 1 ds green glaze plate rim
7. 3^{cw} double grooved ridged rim fr
8. 3 cw bowl base fr
9. 1 mw echinus bowl rim fr
10. 1 cw everted jar rim

208/8

29/04/90

Weather: Clear + windy
 Workers: H-T; H; T; Z

Continued cleaning down the east side.

In the absence of any distinguishable wall proceeded to wipe the surface clear of rocks, leaving a panel along the western side to allow further investigation of the wall remnant found in 207/7.

These rocks and the soil beneath and between them form stratum two.

Totals: 1 bag stratum 1
 1 bag stratum 2.

208/8

30/04/90

- ② 1. Medium quantity cw body sherds
- 2. 3 roof tile fr
- 3. 4 cw plate/bowl base fr
- 4. 1 cw handle fr
- 5. 1 cw jar neck (1/2 of it) fr
- 6. 1 cw handle root
- 7. 1 mw ds red glaze body fr
- 8. 2 cw echinus bowl rim fr
- 9. 4 cw bowl rim fr
- 10. 2 cw plate/bowl rim fr
- 11. 1 lamp base fragment with rosettes.

- ② 1. Medium quantity cw body sherds
- 2. 3 roof tiles
- 3. 5 mw ds red glaze body fr
- 4. 1 mw ds red glaze plate rim fr
- 5. 2 cw handle roots
- 6. 3 cw handle fr
- 7. 3 cooking ware body fr
- 8. 1 cooking ware bowl rim fr
- 9. 3 cw plate/bowl bases fr
- 10. 7 cw amphora/jar rim fr
- 11. 2 cw plate/shallow bowl rim fr
- 12. 2 mw echinus bowl rim fr
- 13. 2 cw double ridged bowl rim fr
- 14. 3 cw indeterminate rim fr
- 15. 1 cw mortarium rim fr
- 16. 1 mw ds black glaze bowl fr, rouletted with central stamp design

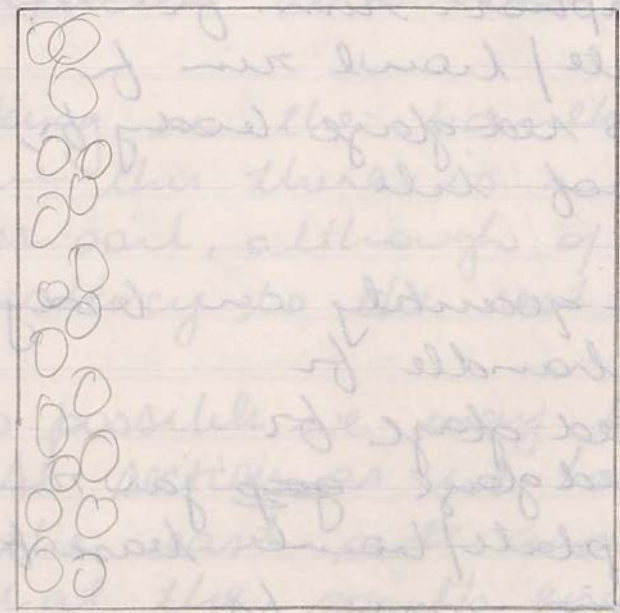
208/8

30/04/90

weather: Hazy, calm
 workers: H-J, J, Z, H

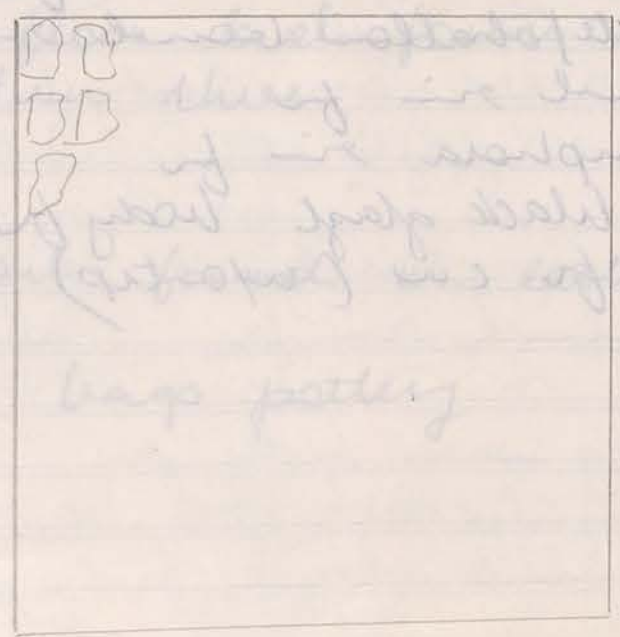
Continuing to clear the surface of rocks according to plan established yesterday.
 2 bags pottery

panel of rocks remaining in case there is a wall.



- OF.1.
- a) 2 metal fragments
 - b) 1 fr opalised glass.

(wall remnant on the same level as stratum 2)



Commenced work on stratum three, which is the layer of soil beneath the rocks. This is a fine, light brown soil with small rocks and pebbles scattered through it.

OP 208/8

01/05/90

- ③ ①
1. Medium quantity cw body sherds
 2. 6 cw plate/bowl bases
 3. 6 cw handle fr.
 4. 7 cooking ware body sherds,
1 plate/bowl base, 2 handle rest fr
 5. 2 mws black glaze body fr
 6. 4 cw bowl rim fr
 7. 4 mw echinus bowl rim fr
 8. 2 amphora rim fr
 9. 2 plate/bowl rim fr
 10. 6 ds red glaze body fr, 1 rim fr.
 11. 1 roof tile

- ③ ②
1. Medium quantity cw body sherds
 2. 4 cw handle fr
 3. 7 ds red glaze fr
 4. 1 ds red glaze ~~gap~~ jar rim fr
 5. 8 cw plate/bowl base fr
 6. 7 cooking ware fr
 7. 3 roof tile fr
 8. 5 echinus bowl rim fr
 9. 5 plate/shallow bowl rim fr
 10. 4 bowl rim fr
 11. 2 amphora rim fr
 12. 1 ds black glaze body fr
 13. 1 toe fr cw (w/o tip)

208/8

01/05/90

Weather: cloudy, hazy, breeze
 Workers: T, Z, H; Faiza (subst. for H-T)

Continuing to work up the third stratum along the eastern side. There appears to be a floor in the N.E. corner, comprised of very hard, compacted earth and limestone.

Looking in the bank immediately above this there is a 5cm strip of darker soil, although of a similar consistency to the rest of stratum three

It is possible we may have missed it in the SE section as we have been working up the east side and digging slightly deeper at the south end than the north.

This floor level forms the bottom of stratum three.

XX O.F.I. Nail found in eastern side.

2 bags pottery

208/8

02/05/90

- ③
1. Medium quantity cw body sherds
 2. 1 cw thick round handle fr
 3. 1 edrimus bowl rim fr
 4. 1 cw plate/bowl base
 5. 1 gw jar/bowl rim fr
 6. 2 ds red glaze body fr
 7. 1 cw handle root
 8. 1 cw body fr with incised verticle rib

- ②
1. Medium quantity cw body sherds
 2. 5 cw handle fr
 3. 5 v small edrimus bowl rim fr
 4. 10 mw ds red glaze body fr
 5. 2 cw plate/bowl base fr
 6. 6 cw v small rim fr
 7. 2 cw bowl rim fr
 8. 1 roof tile fr

- ③
1. Medium quantity cw body sherds
 2. 12 cw plate/bowl base fr
 3. 2 cw bowl base fr
 4. 7 cw edrimus bowl rim fr
 5. 1 cw handle root
 6. 12 mw ds red glaze body fr
 7. 2 mw ds red glaze thick jar rim fr
 8. 2 " " jar base fr
 9. Rims: 4 cw plate rims; 6 jar rim fr; 3 fish bowl rim fr; 3 bowl/jar cw rim fr;
 10. 2 cooking ware body fr
 11. Piece of flint
 12. 1 ss fw black glazed body fr.

12

208/8

02/05/90

Weather: Cold, windy

Workers: T, Z, H, Mahmood (H-T sick)

Bringing the rest of the square down to the floor level that forms the base of station three (with the exception of the rocks remaining on the western side). The floor is not solid all the way across, not all areas are as hard packed. Using the compressed earth as a guideline for the floor means that the square is uneven and sloping north to south.

Clearing to the bottom of ③ (the floor) shows that the rocks on the western side are only one layer deep. As there is no identifiable coherent order we will take them out, working inwards.

* OFI Nail 5 cm long

* OFI Piece of metal (indistinguishable as anything)

* OFI Twisted wire ~~~~~

* OFI Part of large metal ring

3 bags pottery

208/8

03/05/90

(3)
D

1. Large quantity cw body sherds
2. 1st large pot/amphora handle
3. 1 cw large pot/amphora handle root
4. 9 mw ds red glaze body fr
5. 1 mw ds red glaze rim fr
6. 4w plate/bowl base fr
7. 1 mw ds black glaze body fr
8. 4 cooking ware body fr
9. 5 cw bowl rim fr
10. 4 cw jar rim fr
11. 1 cw amphora rim fr

[2]

1. Small quantity cw body sherds
2. 1 thick handle fr
3. 1 cw med size handle fr
4. 2 cw bowl/plate bases
5. 1 mw ds red glaze body fr
6. 1 small piece of flint
7. 3 cw bowl rim fr
8. 2 cw jar rim fr
9. 1 cw amphora rim fr

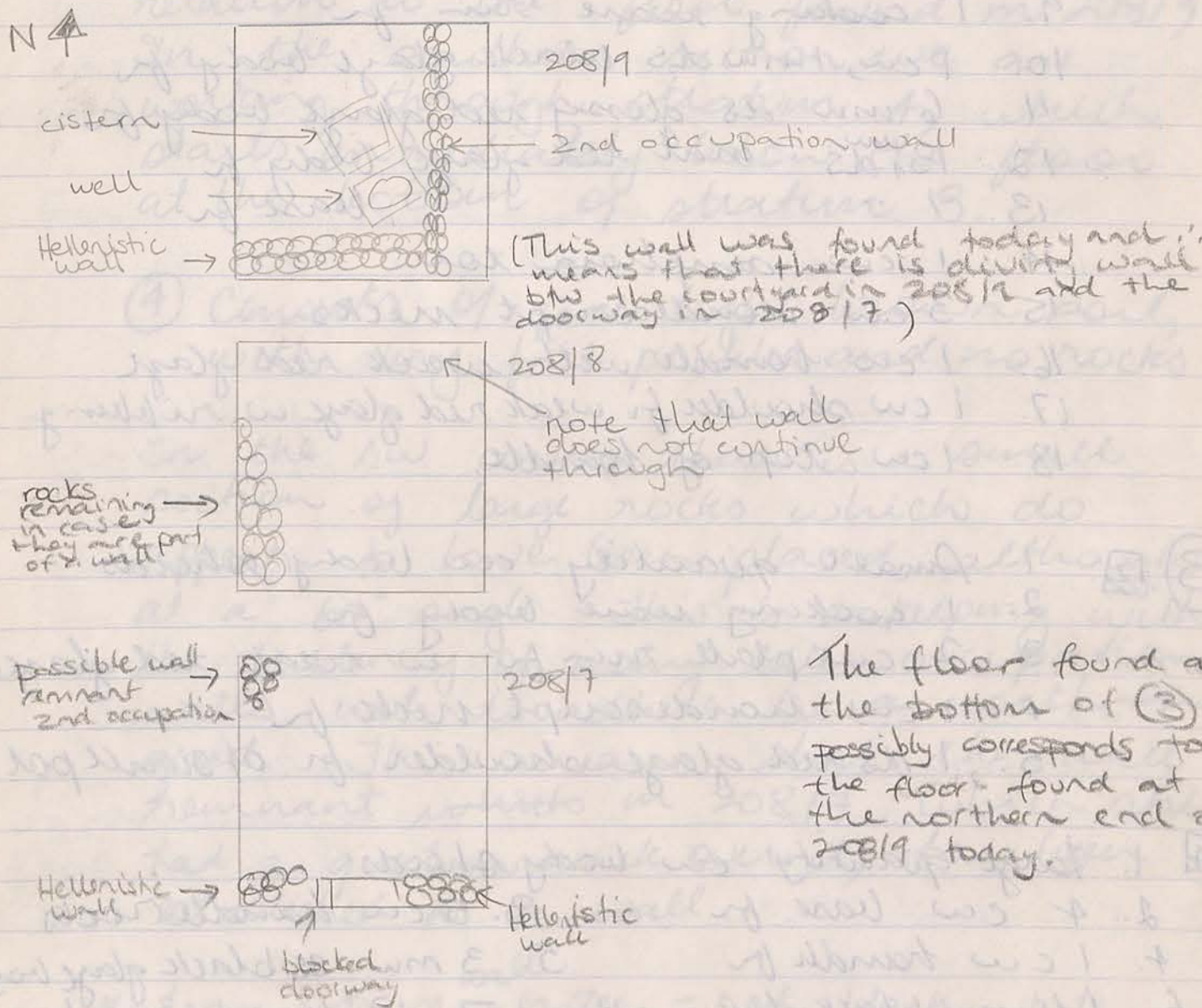
208/8

03/05/90

Weather: Clear, calm
 Workers: T, Z, H-T, H

Continuing to clear rocks from western panel.

Overview of 208/8 in relation to 208/9 and 208/7



The floor found at the bottom of (3) possibly corresponds to the floor found at the northern end of 208/9 today.

2 bags pottery

208/8 S

05/05/90

- ④ ①
1. Large quantity cw body sherds
 2. 9 cw plate/bowl base fr
 3. 1 cw wide-rimmed bowl rim fr
 4. 3 cw bowl rim
 5. 6 cw jar rim, 1 offset jar rim
 6. 2 cw double-ridged jar rim fr
 7. 2 cw echinus bowl rim fr
 8. 4 cooking ware body fr
 9. 1 cooking ware rim fr
 10. 1 cw, 1 mw ds black glaze body fr
 11. 6 mw ds glossy red glaze body fr
 12. 13^{mw} ds mat red glaze body fr
 13. 1 - base fr
 14. 1 cw amphora toe
 15. 3 cw nondescript necks
 16. 1 cw handle with weak red glaze
 17. 1 cw shoulder fr weak red glaze w ribbing
 18. 1 cw top of handle.

- ③ ②
1. Small quantity cw body sherds
 2. 1 cooking ware body fr
 3. 2 cw plate rim fr w weak red glaze
 4. 1 cw nondescript neck fr
 5. 1 ds red glaze shoulder fr of small pot

- ④ ③
1. Large quantity cw body sherds
 2. 4 cw base fr
 3. 5 cw handle roots
 4. 1 cw handle fr
 5. 3 mw ss black glaze body
 6. 1 ds mw black glaze w ribbing
 7. 13 ds red glaze body
 8. 1 mw ds red glaze body fr
 9. 1 " handle root small pot
 10. 1 " rim fr "
 11. 1 " foot fr "

208/8

05/05/90

Weather: calm, breezy
 Works: H; H-T; Z; T (plus Redis 6)

Divided the trench into 208/8 north and south (each section is 2m by 4m). The north section is being left to retain the first floor level as some sort of relation to the floor found in 208/9. In the southern section we are working through stratum 4, which starts immediately below the floor at the bottom of stratum 3.

- ④ Consists of fine light brown soil, with very fine pebbles and no rocks.

In the SW corner there is a small section of large rocks which do appear to have been placed, although at a 60° angle. This is in keeping with the tendency of many later occupation walls not to adhere to a north-south grid. This means that the wall remnant which in 208/7, which still had a question mark over it, has been established as a wall.

* Fragments of ^{wall} plaster - red, black, white, and white with red and black stripes found in the SE corner * NB below upper floor

208185

05/05/90 cont.

- ④ ④ cont 11. 7 ss dull red glaze body fr
12. 1 mw shoulder fr dull black paint w vertical ribbing
 13. 1 mw shoulder fr dull red glaze vertical ribbing
 14. 1 cw body fr with horizontal grooves
 15. 1 mw grooved body fr
 16. 1 cw large pot rim
 17. 4 mw echinus bowl rims
 18. 3 folded rim bowl
 19. 8 cw jar rim fr
 20. 1 cw shoulder fr with vertical + horizontal ribbing

- ④ ③
1. Medium quantity cw body sherds
 2. 4 cw base fr
 3. 1 cooking ware body fr
 4. 2 ds black glaze body fr
 5. 1 cw unguentarium toe fr
 6. 1 cw ds dull red glaze body fr
 7. 1 cw echinus bowl rim fr
 8. 1 cw large water jar rim
 9. 7 cw jar rim
 10. 1 cw fish bowl rim
 11. 1 cw deep bowl rim
 12. 1 cw pot rim

- ④ ⑤
1. Medium quantity cw body sherds
 2. 6 cw plate/bowl base fr
 3. 1 mw base fish plate, dull red glaze, grooved
 4. 6 mw ds red glaze body fr
 5. 2 cw handle fr
 6. 1 echinus bowl rim fr
 7. 2 plate/bowl rim fr
 8. 1 cw jar rim fr
 9. 1 cooking ware body fr
 10. 1 ds matt black paint body
 11. 1 ss matt red body
 12. 1 ss matt black body fr, grooved w vertical ribbing
 13. 1 whetstone

208185

05/05/90
(cont)

Diagram of designer plaster:



*OF1 wire loop ← twisted

*OF1 Unstratified surface object found at 9AM — opalised glass bead

~~*OF1~~ Charcoal found in SW corner near the bank.

208/8 S

06/05/90

- ④ ①
1. Large quantity cw body sherds
 2. 3 cw handle roots, 3 cw handle fr
 3. 4 cw plate/bowl base fr
 4. 1 cw amphora toe fr
 5. 1 mw ds matt red glaze echinus bowl rim
 6. 1 mw ds matt red-brown glaze "
 7. 1 mw ss matt red glaze shoulder fr
 8. 2 mw ds matt " " body fr
 9. 2 mw ss black paint body fr
 10. 6 mw echinus bowl rim fr
 11. 2 cw flat-topped jar rims
 12. 3 cw folded over jar rim fr
 13. 2 cw bowl rim fr
 14. 1 mw body fr with black paint + horizontal wide grooving
 15. 1 fw ds black glaze body fr
 16. 1 mw red dripware body fr

- ③ ②
1. v. small quantity cw body sherds
 2. 1 cw large jar rim fr
 3. 1 cooking ware body fr
 4. 1 mw ds black paint echinus bowl rim

- ④ ③
1. Small quantity cw body sherds
 2. 5 cw plate/bowl bases
 3. 4 mw echinus bowl rim fr
 4. 2 fw ds red glaze body fr
 5. 2 cw handle fr
 6. 1 cw handle root fr
 7. 1 mw ds red paint pot rim
 8. 1 mw body fr with black paint + horizontal ribbing
 9. 5 cw plate/bowl rims

continued overleaf

208/8 S

06/05/90

Weather: Clear, hot
 Workers: HT, T, H; 2

Continuing work in the southern section, bringing ④ down to a new stratum of hard clay.

Traces of plaster have been found on the western side, so that we appear to have another floor. Will leave the western side of 208/8 S and go down on the eastern side (208/8 SE).

2nd floor level: 52 cm deep from SE c
 53 cm from middle of S bank
 54 cm from SW corner

Going through the floor at the bottom of stratum 4 on the eastern side reveals a stratum of loose small tumble with a medium dark brown soil. This is stratum 5. = Fill L2.

*OFl bronze bottom as found in ⑤ 208/8 SE

Elevations of the 2 floor levels so far:

- 1) 60 cm (208/8 N) = Floor 1
- 2) 95 cm (208/8 S) = " 2

from NE corner peg.

208/8 SE

06/05/90
cont.

(5) (4)

1. Medium quantity cw body sherds
2. 4 echinus bowl rims with ds red brown paint
3. 3 mw bowl base fr
4. 1 cw extra large ^{foot} bowl base fr
5. 2 cooking ware body fr
6. 1 " " handle root
7. 1 mw bowl rim with red drip design
8. 2 mw red dripware body fr
9. 3 mw ds red glossy glaze body fr *
10. 2 ss body fr w black paint
11. 1 mw body fr with stripes of black paint
12. 1 mw ds black glaze base fr
13. 85 cw jar rim fr
14. 2 cw shallow bowl rim fr
15. 1 cw handle root
16. 1 funny stone

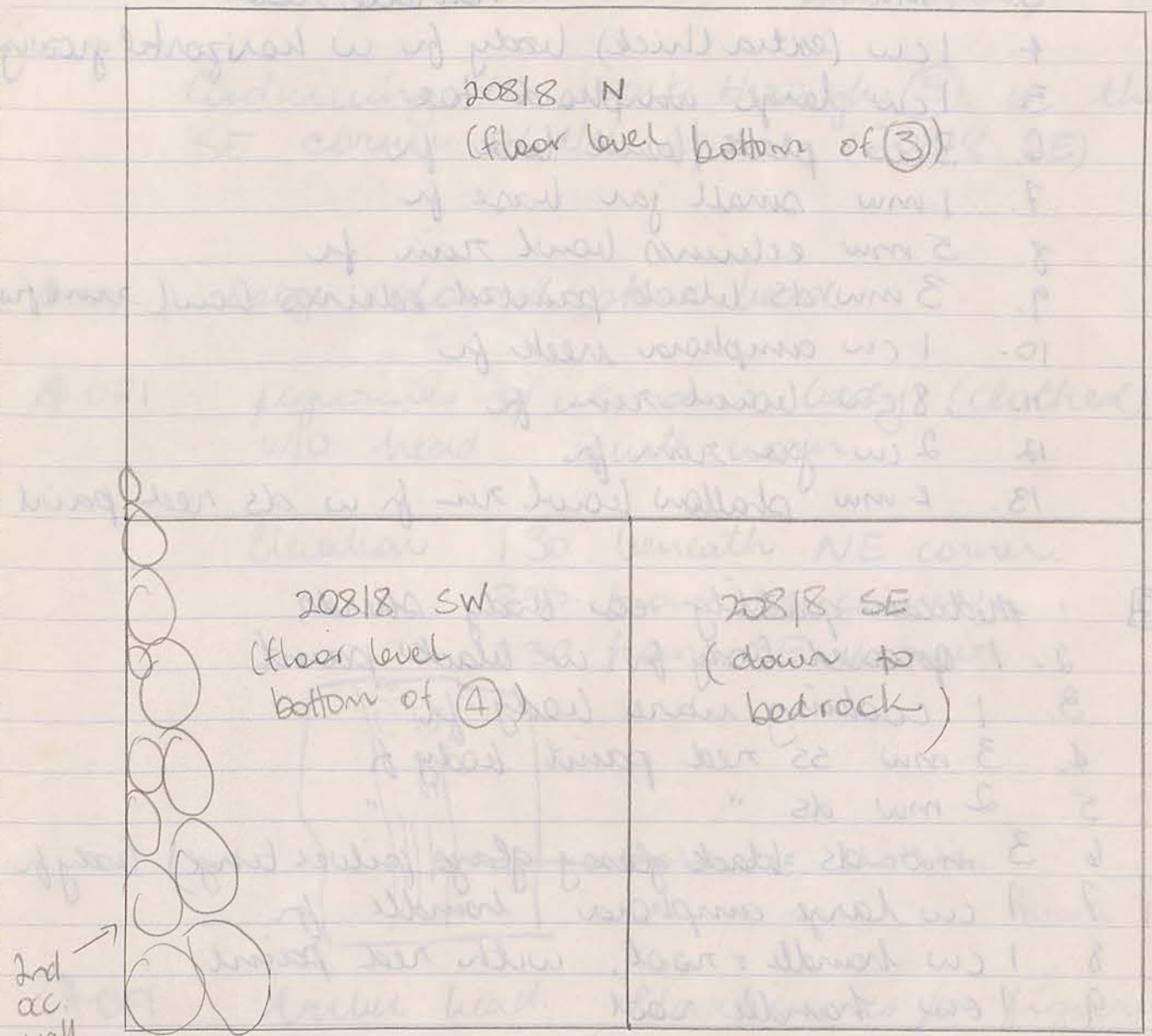
NB red glaze even under primary floor?

Need to see shape. This not under primary floor =
lower fill above poss. bedrock floor

06/05/90 (SE)

208/8 SE

Plan of square:



17J. No primary walls revealed.

35cm bet ween floors (3) + (4).

+ much pottery between

208/8 SE

07/05/90

- (5) 11
1. Medium quantity cw body sherds
 2. 1 mw ds black glaze body fr
 3. 1 mw " " handle root
 4. 1 cw (extra thick) body fr w horizontal grooving
 5. 1 cw large amphora toe
 6. 3 cw plate/bowl base fr
 7. 1 mw small jar base fr
 8. 5 mw echinus bowl rim fr
 9. 3 mw ds black painted echinus bowl rim fr
 10. 1 cw amphora neck fr
 11. 8 cw bowl rim fr
 12. 2 cw jar rim fr
 13. 4 mw shallow bowl rim fr w ds red paint

- (5) 12
1. Medium quantity cw body sherds
 2. 1 grooved body fr w black paint
 3. 1 cooking ware body fr
 4. 3 mw ss red paint body fr
 5. 2 mw ds " "
 6. 3 mw ds black glossy glaze (silver tinge) body fr
 7. 1 cw large amphora handle fr
 8. 1 cw handle + root, with red paint
 9. 1 cw handle root
 10. 1 mw small jar base
 11. 1 cw plate base
 12. 1 mw small bowl base
 13. 3 cw jar rim fr
 14. 2 mw echinus bowl rim fr
 15. 1 mw echinus bowl rim fr with ds black paint
 16. 2 cw plate rims
 17. 1 mw ds red glaze jar rim
 18. 1 mortarium rim
 19. 1 reverse mortar style rim.

208/8 (SE)

07/05/90

Weather: light breeze, clear
 Workers: H, Z, T, H-T (NB M meant to turn up but didn't)

Continuing to work through (5) in the SE corner of the square (208/8 SE)

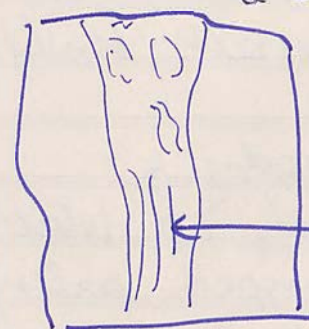
*OF1 beige coloured stone bead

*OF1 figurine of woman's body (clothed) w/o head. Quite worn.

Elevation 1.30 beneath NE corner.

3.30 from NE corner

2.30 from SE corner



these are clothes.

"Astarte" plaque

*OF1 Amber head. Elevation as for figurine

The bank betw 208/8 and 208/9 has been taken down. The floor level left in 208/8 N continued under the bank, where traces of plaster were found. It is 8cm lower than the 2nd occupation wall which runs down the east side of 208/9. Removal of the bank also showed that this wall formed a corner with an ew wall that

07/05/90

20818 SE

⑤
The wall is light grey, and runs north-south. It is 1.5m high and 0.5m thick. It is made of concrete blocks, and has a smooth finish. It is located in the corner of the site.

⑥
The wall is light grey, and runs north-south. It is 1.5m high and 0.5m thick. It is made of concrete blocks, and has a smooth finish. It is located in the corner of the site.

⑦
The wall is light grey, and runs north-south. It is 1.5m high and 0.5m thick. It is made of concrete blocks, and has a smooth finish. It is located in the corner of the site.

⑧
The wall is light grey, and runs north-south. It is 1.5m high and 0.5m thick. It is made of concrete blocks, and has a smooth finish. It is located in the corner of the site.

⑨
The wall is light grey, and runs north-south. It is 1.5m high and 0.5m thick. It is made of concrete blocks, and has a smooth finish. It is located in the corner of the site.

⑩
The wall is light grey, and runs north-south. It is 1.5m high and 0.5m thick. It is made of concrete blocks, and has a smooth finish. It is located in the corner of the site.

⑪
The wall is light grey, and runs north-south. It is 1.5m high and 0.5m thick. It is made of concrete blocks, and has a smooth finish. It is located in the corner of the site.

⑫
The wall is light grey, and runs north-south. It is 1.5m high and 0.5m thick. It is made of concrete blocks, and has a smooth finish. It is located in the corner of the site.

⑬
The wall is light grey, and runs north-south. It is 1.5m high and 0.5m thick. It is made of concrete blocks, and has a smooth finish. It is located in the corner of the site.

⑭
The wall is light grey, and runs north-south. It is 1.5m high and 0.5m thick. It is made of concrete blocks, and has a smooth finish. It is located in the corner of the site.



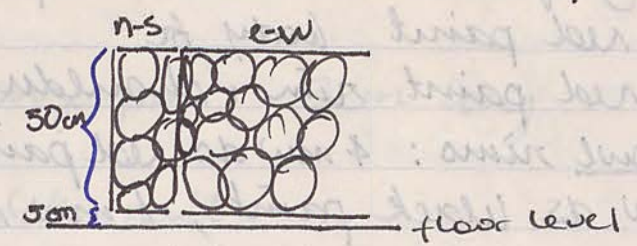
20818 SE

07/05/90 cont

①
runs along the southern end of 20816

It is possible that this is the same floor as that found in the north of 20819, but it would have to slope quite considerably (it is at least 1 1/2 ft lower, over 5m).

Section of wall in 20819 - 20818



- 1. 1 row of red paint
- 2. 1 row of red paint
- 3. 1 row of red paint
- 4. 1 row of red paint
- 5. 1 row of red paint
- 6. 1 row of red paint
- 7. 1 row of red paint
- 8. 1 row of red paint
- 9. 1 row of red paint
- 10. 1 row of red paint
- 11. 1 row of red paint
- 12. 1 row of red paint
- 13. 1 row of red paint
- 14. 1 row of red paint
- 15. 1 row of red paint
- 16. 1 row of red paint
- 17. 1 row of red paint
- 18. 1 row of red paint
- 19. 1 row of red paint
- 20. 1 row of red paint

- 21. 1 row of red paint
- 22. 1 row of red paint
- 23. 1 row of red paint
- 24. 1 row of red paint
- 25. 1 row of red paint
- 26. 1 row of red paint
- 27. 1 row of red paint
- 28. 1 row of red paint
- 29. 1 row of red paint
- 30. 1 row of red paint
- 31. 1 row of red paint
- 32. 1 row of red paint
- 33. 1 row of red paint
- 34. 1 row of red paint
- 35. 1 row of red paint
- 36. 1 row of red paint
- 37. 1 row of red paint
- 38. 1 row of red paint
- 39. 1 row of red paint
- 40. 1 row of red paint

208/8 SE

08/05/90

- (5) ①
1. Large quantity cw body sherds
 2. 2 mw body fr w. vertical grooving
 3. 3# mw small bowl/jar base fr with red paint inside
 4. 1 mw " " (no red paint)
 5. 4 cw plate/bowl base fr
 6. 2 cw handle roots
 7. 7 mw body fr w ds ~~to~~ red paint
 8. 2 mw ss red paint body fr
 9. 1 mw ss red paint rim + shoulder of jar
 10. Echinus bowl rims: 4 mw ds red paint; 1 mw ds black paint; 1 mw red dripware
 11. Cooking ware: 4# body fr; 1 handle root; 1 ^{handle} of small vessel
 12. Jar rims: 2 cw; 1 ds red paint
 13. 3 cw bowl rim fr
 14. 1 ds red paint plate rim
 15. 2 ds black paint plate rim fr
 16. 4 mw ds red paint small bowl/jar rims
 17. 1 mw ds black glaze " *
 18. 1 mw ds black glaze body fr *
 19. 1 body fr of open vessel, w black glaze w rouletting and stamped palmettes.
 20. 1 mw body fr w dull black glaze + vertical ribbing

- (5) ②
1. Medium quantity cw body sherds
 2. 4 cw handle roots
 3. 1 cw handle fr w brown paint
 4. 6 cw plate/bowl bases
 5. 1 ds green plate rim fr
 6. 2 cw amphora neck fr
 7. 3 ds red painted body fr
 8. 1 mw shoulder fr, v grooving w l h groove
 9. 7 mw ech. bowl rim ds red p
 10. 1 mw ech. bowl rim fr (red dripware)
 11. 1 cw jar rim fr
 12. 3 cw bowl rim fr
 13. 1 ds red paint plate rim fr
 14. 2 mw jar rim fr
 15. 1 mw bowl rim fr
 16. 1 mw ds sp jar rim
 17. 1 mw red dripware pot rim fr
 18. 1 mw greyware jar rim fr
 19. 1 mw cooking body fr
 20. 1 cw cooking body fr
 21. 1 greyware unguentarium etc.

208/8 (SE)

08/05/90

Weather: calm, hazy

Workers: H; Z; T; H-T

Continuing to work down through (5) in the SE corner of the trench.

O.F.I. bronze pin 3cm long

O.F.I. thick nail

O.F.I. ds black glaze bowl rim. *

208/8 SE

09/05/90

- (5) 11
1. Medium quantity cw body sherds
 2. 2 cw large pot handles
 3. 1 cw amphora base
 4. 7 cw bowl bases
 5. 3 cw jar rims
 6. 4 cw bowl rims
 7. 2 mw red dripware bowl rims
 8. 1 ds white glaze shallow bowl rim
 9. 1 do green glaze plate / bowl rim fr
 10. 2 ~~mw~~ ss red paint bowl rim fr
 11. 1 mw brown dripware small bowl rim fr
 12. 1 mw " " rim + shoulder fr of small pot
 13. 7 mw ds red p echinus bowl rim fr
 14. 2 mw ech. bowl rim fr
 15. 1 mw body fr w red paint

208/8 SE

09/05/90

Weather: hazy, mild breeze, warm
 Workers: H-T; T; H; Z; Mahmood

Continuing to work down through (5) down to a hard clay level. This clay becomes stratum 6.

O.F.I. Square piece of metal with 3 holes on each side, but very corroded - hard to tell if there was an inscription (eg)

Elevation: 124 cm from ne corner point

O.F.I. Large nail in 2 pieces

O.F.I. Plate rim with faded ds green glaze

Large piece of metal slag in (6)

This stratum goes down to bed rock.

07/02/90

25 2/28/8

Workers: H; 2; T; H-T; M.
Workers: H; 2; T; H-T; M.

Continuing to work down through the dam to a first clay level. This clay becomes stiffer as we go down.

07.1

Down piece of metal with 3 tubes on each side. This is a concrete structure to tell if there was an inscription (sp) in the soil.

07.0

Large soil in 2 pieces

07.1

Plate rim with feet as seen above

Large piece of metal rod in (C)

This structure goes down to last rock

07/02/90

25 10/05/90

Workers: H; 2; T; H-T; M.

I was sick, so they worked for Radi, taking out the barrel with 208/6 and 208/9.

(6)

1. 1 cm level of soil
2. 2 cm level of soil
3. 3 cm level of soil
4. 4 cm level of soil
5. 5 cm level of soil
6. 6 cm level of soil
7. 7 cm level of soil
8. 8 cm level of soil
9. 9 cm level of soil
10. 10 cm level of soil
11. 11 cm level of soil
12. 12 cm level of soil
13. 13 cm level of soil
14. 14 cm level of soil
15. 15 cm level of soil
16. 16 cm level of soil
17. 17 cm level of soil
18. 18 cm level of soil
19. 19 cm level of soil
20. 20 cm level of soil
21. 21 cm level of soil
22. 22 cm level of soil
23. 23 cm level of soil
24. 24 cm level of soil
25. 25 cm level of soil

(3)

1. 1 cm level of soil
2. 2 cm level of soil
3. 3 cm level of soil
4. 4 cm level of soil
5. 5 cm level of soil
6. 6 cm level of soil
7. 7 cm level of soil
8. 8 cm level of soil
9. 9 cm level of soil
10. 10 cm level of soil
11. 11 cm level of soil
12. 12 cm level of soil
13. 13 cm level of soil
14. 14 cm level of soil
15. 15 cm level of soil
16. 16 cm level of soil
17. 17 cm level of soil
18. 18 cm level of soil
19. 19 cm level of soil
20. 20 cm level of soil
21. 21 cm level of soil
22. 22 cm level of soil
23. 23 cm level of soil
24. 24 cm level of soil
25. 25 cm level of soil

208/8 SE

12/05/90

- ⑥ ①
1. Small quantity cw body sherds
 2. 8 cw cooking ware body fr
 3. 1 cw " " bowl base fr
 4. 2 cw bowl base fr
 5. 1 cw bowl base fr w dull red paint
 6. 1 mw " " w dull brown paint
 7. 2 cw body fr, grooved w dull red paint on ridge
 8. 2 mw ech. bowl rim fr w red dripware
 9. 3 mw edrimus bowl rim fr w red-brown paint
 10. 3 mw red paint body fr, 1 mw red dripware
 11. 2 cw bowl rim fr w red paint
 12. 1 cw bowl rim fr w. red dripware
 13. 2 cw jar rim fr
 14. 1 cw greyware bowl rim fr
 15. 1 mw shallow bowl rim w red paint

③ ② (bank btw 208/5W and 208/7)

1. Medium quantity cw body sherds
2. 5 cw bowl base fr
3. 1 mw ds red paint small bowl base fr
4. 3 cw edrimus bowl
5. 1 mw ds red glaze jar rim fr
6. 2 mw ds red glaze body fr
7. 2 cw flat-topped wide rimmed bowl rim
8. 3 cw bowl rim fr.
9. 1 cw dull brown paint plate rim fr
10. 1 cw plate base fr
11. 3 cooking ware body fr
12. 1 mw body fr w. ds black glaze
13. 1 cw body fr w. horizontal grooving
14. 2 cw handle roots.

208/8 SE

12/05/90

Weather: hazy, strong breeze
 Workers: T; Z; H; M; Faiza (onist for H-T)

Working through ⑥ to bedrock. It rained over the weekend, but nothing exciting turned up.

Bedrock has been cleaned. There are 3 large rocks with 20cm btw them sitting on the bedrock. They jut out of the bank on the eastern side.

The bedrock appears to have been chipped out on the eastern side.

Could this be remains of a wall/boundary between 21 & 12?
 Bedrock cut to fit?

* We are now taking out the bank btw 208/8 (SW) and 208/7, in an attempt to define the Hellenistic wall which was e-w along the southern bank of 207/2. ✓

HT. How will that help? Confused (me).
 (Found it did not continue East)

208/8 SW

13/05/90

②-③ (Bank)

1. Large quantity cw body sherds
2. 6 cw bowl bases
3. 1 cw amphora toe
4. 1 cw body red paint horizontal grooving
5. 2 mw body ss red dripware
6. 3 mw body dull red paint
7. 2 mw cooking ware body
8. 3 ds red paint mw echinus bowl rims
9. 1 ds dull black paint mw echinus bowl rim
10. 6 cw handle + handle root frags
11. 1 handle frag ds black glaze cw
12. 1 ds bg body cw
13. 2 ds bg rim small bowl mw
14. 1 mw neck and rim of small bottle
15. 3 bowl rims cw dull red paint ds
16. 6 cw bowl rims
17. 1 ss red paint bowl rim cw
18. 2 bowl rims outside red, inside black on red
19. 1 v small grey ware rim small bottle
20. 1 cw jar rim

④

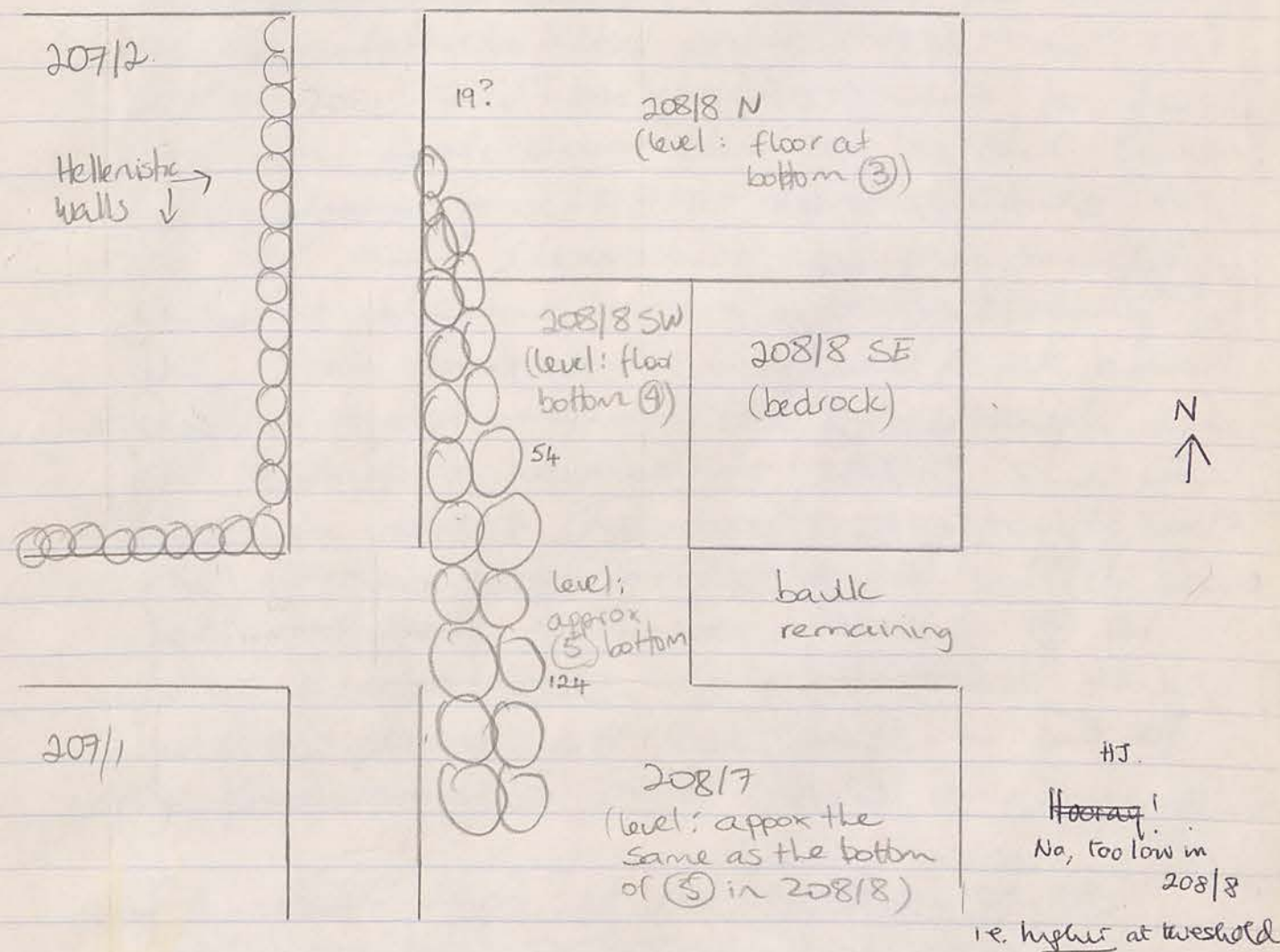
1. Medium quantity cw body sherds
2. 2 cw handle roots, 2 cw handle fragments
3. 3 cw cooking body; 2 mw cooking base frag.
4. 1 large cw amphora toe
5. 4 cw jar rims
6. 2 cw bowl rims
7. 2 cw ech. b. rims dull red paint
8. 3 ds mw echinus bowl rims dull brown paint
9. 1 shallow bowl red plus black paint allow the top
10. 1 bowl rim ds black glaze, 1 body ds black glaze
11. 1 v small amphora toe
12. 6 cw plate/bowl bases
13. 2 mw bowl bases.

208/8 SW

13/05/90

Weather: strong wind
Workers: H.T; T; H; 2; M

Continuing to take ^{out} the bank between 208/8 and 208/7.



NOTE: 1) Wall continues through bank, so that we have the same rough construction 2nd occ wall through both squares.

2) 1st occ wall in 207/2 does not continue through the bank.

#J. Could there have been a step? Foyer too big if all one

20818 (SW)

14/05/90

① ⑤ (bank btw 20817)

1. Small quantity cw body sherds
2. 2 cw jar rims
3. 2 ds red paint body cw
4. 1 mw bowl base
5. 1 red dripware mw bowl rim
6. 1 ds red paint mw echinus bowl rim
7. 1 mw bowl rim

② ② (around wall in SW corner)

1. Small quantity cw body sherds
2. 2 medium ware bowl bases
- 1 cw jar rim fragment
- 1 cw bowl rim fragment
- 1 ds brown glaze body fragment

- ③ ②
1. Medium quantity cw body sherds
2. 3 cw bowl bases fragments
3. 1 ds red paint cw plate base fragment
4. 3 cw handle root fragment
5. 1 amphora toe cw
6. 1 ds red glaze body mw
7. 1 cooking mw base, 1 body
8. 2 cw echinus bowl rims
9. 1 cw jar rim; 2 cw plate rim
10. 1 cw ds red paint shallow bowl rim

Bank btw 20712

- ④ ③
1. Medium quantity cw body sherds
2. 9 plate/bowl bases mw
3. 1 ds red glaze plate base fr.
4. 1 red dripware mw bowl base
5. 1 ds red glaze body
6. 1 ds black paint body
7. 1 cw handle root fr.
8. 1 cw handle root horizontal group
9. 7 bowl rim fr cw
10. 3 cw jar rims fr
11. 1 amphora toe cw
12. 2 fragments door knob type thing

20818 SW

14/05/90

Weather: hazy, strong breeze, warm
 Workers: HT, H, M, T, Z

Cleaning up the SW section of the bank btw 20818 SW and 20817. Yesterday we brought it down ~~to~~ as closely as possible to the same level as the floor in 20817. It was hard to find, and in fact our level is a bit lower. (The floor in 20817 corresponds to a 1st occ threshold, so presumably in the absence of a wall dividing the two trenches this floor level must continue through to 20818, although we did not pick it up in 20818 SW. The floor in 20817 roughly corresponds with the bottom of ⑤ in 20818 SW, which was followed by a hard stratum ⑥ of clay or bedrock. I don't think this was a floor, so we have a bit of a problem 😊). (HT - probably was a floor near bedrock?)

i.e. lower

The floor level at the bottom of ④ (retained in 20818 SW) was not as easily identifiable in the bank — I'm not sure we would have called it a floor if we hadn't known it had to be one.

* To clarify the structure of the 1st occ wall in 20712 we are now taking out the bank btw 20712 and 20818 (see diagram previous page)

20818 SW

15/05/90

NB Pottery from this section is being labelled under 20818 to identify it with 1990 excavations

1. Medium quantity cw body sherds
2. 3 cw bowl bases
3. 1 cw cooking ware body frag
4. 2 cw handle fr
5. 1 cw large vessel handle fr plus root
6. 4 mw ds red glaze body fr
7. 1 mw ds red glaze bowl rim fr
8. 1 cw " " echinus bowl rim fr
9. 1 cw body fr horizontal grooving
10. 1 " " " traces black paint
11. 1 cw rim large vessel
12. 2 cw echinus bowl rims fr
13. 2 cw bowl rims fr
14. 1 cw jar rim
15. 4 cupplate / shallow bowl rim frs

1. Large quantity cw body sherds
2. 2 mw cooking ware body fragments
3. 1 cw amphora toe
4. 2 large cw rim
5. 2 cw handle fr
6. 2 cw handle roots
7. 4 cw sm-m bowl base fr
8. 1 mwsm closed vessel base
9. 1 cw plate base
10. 1 mw ds red glaze bowl base fr
11. 1 large cw ds red glaze bowl base fr
12. 4 mw ds red glaze body fr
13. 1 ds mw red glaze v groove
14. 2 cw red dripware body fr
15. 1 cw bowl/jar body fr
16. 1 sm pot mw body (closed vessel)
17. 2 cw spouts
18. 2 ds red glaze mw jar rims
19. 7 cw jar rims
20. 1 mortar rim cw
21. 2 echinus bowl rims (1 ds red paint)
22. 1 shallow bowl rim cw

20818 SW

15/05/90

Weather: muggy, strong breeze
Workers: HT; H; M; Z, T

Continuing to take out the bank betw 20818 and 20712 from 20712 (we want to work up the other side of the 2nd occ wall in 20818)

The e-w in 20712 continues past its intersection with the n-s wall another 30cm. It does not have a finished look, and I have no idea what it would be for if it were meant to be like that. It is definitely part of the wall as it is constructed the same way, and after 30cm, seems as if it will go down to bedrock along with the rest of the wall.

*OF1 Small lamp in 2 pieces

OF1 Glass bead

OF1 Orange stone bead

OF1 Opalised glass fragment

~~OF1 - Strange st~~

Very large square stone found beside the N-S 1st occ wall in 20712. Will go down further to investigate.

20818 SW
(bank btw 20712)

16/05/90

- ④ ①
1. Medium quantity cw body sherds
 2. 1 basalt grinder fr
 3. 1 lump of basalt
 4. 1 cw cooking ware body fr
 5. 1 ds black glaze body cw
 6. 1 mw body fragment with red glaze on the bottom side and vertical scoring
 7. 4 cw handle roots
 8. 4 mw red dripware echiros bowl rim
 9. 1 fr rim fr green glaze
 10. 1 fr unguentarium stem mw
 11. 1 mw amphora toe
 12. 5 mw large fragments of small shallow bowls with red dripware
 13. 1 cw bowl base red dripware
 14. 6 cw plate/bowl base fragments
 15. 3 open rimmed jar (cw) rim fragments
 16. 2 grooved rim fr bowl/jar (cw)

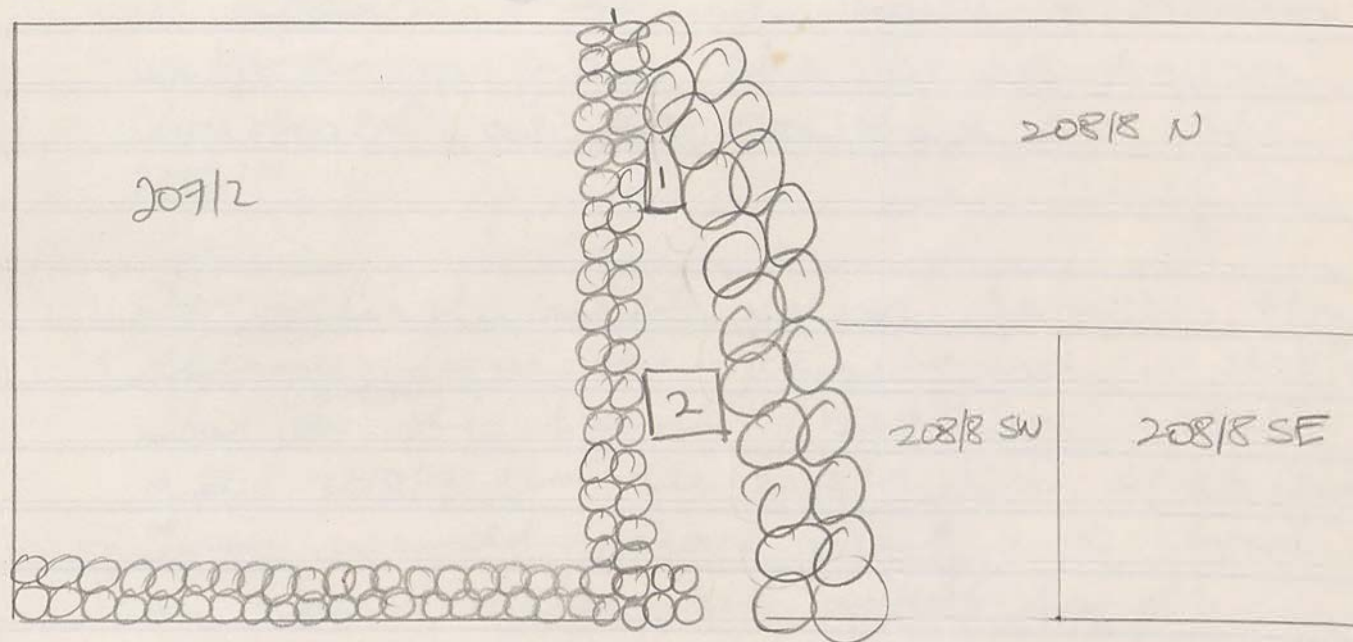
20818 SW

16/05/90

Weather: rained last night (nothing washed up) warm, windy
Workers: H-T; H; T; Z; M

Continuing to go down btw the walls in 20712 and 20818 to clarify what the role of the big stone.

Another large stone has been found at the junction of the 2 walls, both are below the 2nd ooc wall.



Clearing down has not given any clues as to what these stones are. ① does not appear to be worked. It sits on soil immediately below the 2nd ooc wall.

Ravi wants to take out the bank btw 20712 and 20713 around the Hellenistic wall, as it runs up into 20713 as well.

16/02/90

208/8 SW

Weather: sunny but with light drizzle
(at 11:30, 12:00, 12:30)
M, S, T, H, T, H

④ ①

Continuing to dig down the wall
in 208/8 and 208/9 to clarify
the role of the 2nd occ wall.

Another large stone has been found
at the junction of the 2nd wall. Both are
below the 2nd occ wall.

- 1. 5 cm large fragment of small shell
- 2. 1 cm large fragment of small shell
- 3. 1 cm large fragment of small shell
- 4. 6 cm plate fragment
- 5. 3 cm plate fragment
- 6. 2 cm plate fragment

Clearing down has not given any clues
as to what these stones are. ① does not
appear to be worked. It sits on soil
immediately below the 2nd occ wall.
Row wants to take out the vault
for 208/8 and 208/9 around the Hellström
wall, so it was up with 208/8 as well.

16/05/90 cont.

This will involve taking away the
end of the 2nd occ wall as it overlaps
with the 1st occ wall. Perhaps it will
be clearer then.

② on the other hand is a worked
square block, level with the top
of the 1st occ wall, 40 cm deep,
and 40 x 60 cm, sitting on soil.
- door stone - step?

We have decided that nothing more
can be gained by digging, so we
are stopping.

It appears that we have a room
extending from the 1st occupation
threshold at the southern end of
208/9.

The first wall found between the
dormitory and the courtyard in 208/9
was the 1st wall between 208/8
and 208/9 (on the 208/9 side, of course).
This would mean that we had
a room 10m in width length.

This situation posed problems in
terms of floor levels.

floor 1.

The first floor identified in 208/8
was at the bottom of ③. It ran
approx 5cm below the 1st occupation

Conclusion

This square in itself was fairly empty + leaving.

Two floor levels were established, and one 2nd or 3rd (probably 3rd, owing to its rough construction and 100° angle) wall.

The square has raised more questions than it's answered in terms of the rest of the building.

1st occ

It appears that we have a room extending from the 1st occupation threshold at the southern end of 208/7.

The first wall found between the doorway and the courtyard in 208/9 was ~~the~~ ^{underlying} the wall between 208/8 and 208/9 (on the 208/9 side, of course). This would mean that we had a room 10m in width length.

This situation posed problems in terms of floor levels.

Floor 1.

The first floor identified in 208/8 was at the bottom of (3). It ran approx 5cm below the later occupation

wall running n-s down the eastern
bault of 208/9 and ~~to~~ forming a corner
with an e-w wall in 208/6, while the
later occupation wall sat directly on it.
on the western bault of 208/8

The dumpy level reading for this floor
is -33.0 (Datum = 0).

It continued through the bault into
208/9 (established when this bault
was taken down), but I don't know
if it was determined whether it was
a 1st or 2nd occ floor.

On the evidence in 208/8 alone it
would appear to be a 2nd occupation
floor, as it corresponds so well with
the walls. I don't know whether this
floor extended down into 208/7. It
does not seem to from the baults,
though.

This floor was retained in the
northern section of the square (208/8 N).

Floor 2. The second floor was found
at the bottom of ④. This had
traces of plaster on it on the
western side.

Consequently this side was
retained (208/8 SW) and a 2x2m
square on the eastern side (208/8SE)
was taken down to bedrock.

The bault in 208/8 SE showed
a definite 2cm line of crushed
limestone continuing just below
floor level for 60cm along
the northern side. In the
western bault there is a 30cm
stripe of limestone 8cm below
floor level with a 2cm line of
red clay beneath it.

No! SW.

HJ
Could this be
level with floor
of 208/7?
Sleeps here?
Does

However in the southern bault
it is very hard to find any traces
of floor at this level. At the
time of excavation there were soft
areas of floor, but I don't
remember the whole southern
area being clearly soft.

It is this floor which poses the
dilemma in defining the 1st occ
building.

70cm!

The level of the floor in 208/7 is -147.0 (Datum=0) as compared to -77.5 (Datum=0) in 208/8 SW.

It seems too great a difference for a split level floor, and we have found no trace of steps. (Large blocks?)

Nor does the floor in 208/7 continue into 208/8. - evidence then of a rise in level.
different room

There is a hard packed clay level just above bedrock which roughly corresponds to the floor in 208/7, but ~~it~~ meets the bedrock starts to slope upwards above the floor level in 208/7. In addition Hellenistic floors were generally packed up from bedrock.

It is possible that the stunted projection from the corner of the wall in 207/2 (see sketch 16/05) originally extended as a wall dividing 208/7 from 208/8, and was later pulled down, destroyed etc. Thus the floor at the bottom of ④ in 208/8 (floor 2) would be a 1st occ floor.

I'm not attempting any ideas about

downward etc b/w the 2 rooms, but at least that might explain why the ^{southern} wall shows no sign of floor at the bottom of ④, if there had been disturbance caused by wall upheaval.

No doorway was found between 208/8 and the well and courtyard in 208/1. Possibly different houses? But only one course of stones survives. HT.

2nd occ.
-3rd

The only wall in the square is a later occ wall. It peters out 1.3 m into 208/7 (but this may have been because the rest was pulled out before it was identified), and overlaps a 1st occupation wall at the northern end of 207/2. It didn't seem to extend into the wall crossing up to 207/3, but Ravi excavated that area a bit later to define the n-s 1st occ wall and I don't know what if anything he found out about my 2nd occ wall.

yes.

I call it 3rd occ because it is of poorer construction than the other later occupation wall in the area, that is 208/9 and 208/6, but I wouldn't know.

It does not appear to bear any relation to this more solid wall, apart from the fact that both are close to the floor level in 208/8 N.

We will need to excavate 208/5 to get a better idea of what is happening.

The plan for this square was done by Jenny in relation to 208/9. - where is it?

A section drawing of the SW bank (what remains of it), the one with the which didn't show the floor level at the bottom of (4), is included in the drawings at the back of the book. It's not!

02/20 207|9

16/05/90

Weather: hot, strong wind

Workers: H.T.; H.T.; 2; F

Commenced removing topsoil.

This trench appears to be too far up the grid in relation to 207/3 and 207/4 and in relation to 207/1 and 207/3 it is perfectly on the grid, allowing for a 1m bank btw 207/7 and 207/8 (not yet cleared) and another btw 207/9 and 207/8.

I have drawn a plan of the squares in 207, showing where they are in relation to the grid, which hopefully will clarify some of the anomalies at present existing.

No pottery.

207/9

17/05/90

① ②

1. Small quantity cw body sherds
2. 1 cw handle rest
3. 1 cw handle fr
4. 2 cw plate / bowl base fr
5. 2 cw plate / bowl ri fr
6. 1 cw unguentarium toe

207/9

17/05/90

Weather: Warm, windy
 Workers: H-T; H; T; Z; F

Clearing topsoil (stratum 1)

OP/207/9

21/05/90
P/POC

207/9

21/05/90

① 1

1. Medium quantity cw body sherds
2. 3 cw handle rests
3. 1 cw handle fr
4. 1 cw amphora toe
5. 1 nw ds red glaze body fr
6. 11 cw plate/bowl base fr
7. 10 cw bowl / jar rim fr, 1 faded (black paint)
8. 3 cw jar rim fr (ridged)
9. 2 cw mortarium rim fr
10. 2 cw echinus bowl rims

OP/207/9

22/05/90
P/21/05/90

Weather: hot, cloudy, light breeze
Workers: HT; T; Z; H; F

Continuing to clear topsoil ①.

This has exposed a layer of rocks beneath ground level which forms ②.

207/9

22/05/90

- (2) ①
1. Small quantity cw body sherds
 2. 1 cw handle rest
 3. 1 cw bowl base
 4. 2 cw jar rim fr
 5. 3 cw bowl/jar rim fr

207/9

22/05/90

Weather: lazy, hot, calm
 Workers: T; F; H
 (Election Day)

Removing 2nd stratum rocks that don't look like anything.

Work finished 7.30 AM.

55/02/90

P/FOC

207/9

23/05/90

(2) II

1. Large quantity cw body sherds
2. 6 cw plate/bowl base fr
3. 1 mw plate/bowl base fr
4. 54 cw handle root fr
5. 1 small whole handle cw
6. 3 cw handle fr
7. 1 cw bowl/plate base (flat)
8. 2 cw open rimmed bowl ri fr
9. 3 cw grooved jar ri fr
10. 2 mw bowl ri fr with grooving inside
11. 1 cw flat topped outward flaring jar ri fr
12. 1 cw jar ri fr
13. 1 cw body horizontal groove
14. 1 cw amphora knobbed toe
15. 8 mw ds redglaze body fr
16. 1 mw ds redglaze vsmall base fr
17. 1 cw shoulder, 2 horizontal grooves and below them impressed triangle design
18. 1 cw body with pie crust design (one stripe)
19. 1 cw shoulder fragment with jagged horizontal grooving
20. 1 cw body fr with brown paint on the inside.
21. 1 cw cooking ware body fragment

207/9

23/05/90

Weather: calm hot
 Workers: HT; H; T; Z; F

Working down through (2), clearing away rocks as we do.

DFI Ideal of large figurine, badly worn.

DFI Glass fragment

DFI Glass fragment

DFI Wire loop

1 bag pottery

OP/20/88

207/9

24/05/90

(2) II

1. Medium quantity cw body sherds
2. 6 cw plate/bowl base fr
3. 1 cw ds red glaze plate/bowl base fr
4. 6 cw handle fragments
5. 1 cw handle fragment with knob on top
6. 1 cw whole handle fr (possibly amphora)
7. ~~2 cw~~
7. 1 cw amphora toe fr
8. 1 cw unguentarium toe fr
9. 2 cw body fr with vertical grooving
10. 1 cw shoulder fr large bowl
11. 1 ds red glaze nw body fr
12. 1 ds red glaze small jar/bowl base
13. 1 nw grey ware vase rim neck fr
14. 1 cw ds brown paint plate body fr
15. 2 cw grooved jar rim fr (large jar)
16. 1 cw bowl rim fr
17. 2 cw grooved bowl/jar rim fr
18. 1 cw grey dripware v'd rim fr
19. 1 cw mortarium rim fr
20. 1 cw double-cylindrical amphora handle fr

207/9

24/05/90

Weather: calm, hot

Workers: H.T; T; Z; H; F

Continuing to clear out rocks, so that (2) contains both rocks and the soil between and immediately below them.

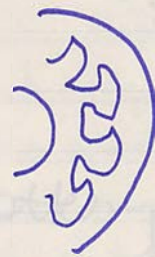
Large thorn (horse?) and three teeth attached to jaw were found.

OF1

Possible head of small figurine (little finger-nail size)

OF1

Small lamp fragment?



90.519

(grooved design)

1 bag pottery

207/19

26/05/90

- (2) (1)
1. ~~Small~~ Small quantity cw body sherds
 2. 5 cw handle roots
 3. 7 plate/bowl base fragments (cw)
 4. 1 cw ^{external} single grooved jar rim plus shoulder
 5. 1 cw triple ridged (ext) bowl/jar rim fr
 6. 2 cw outward flaring mortarium rim fr
 7. 1 cw open rimmed cooking ware fragment
 8. 3 cw very small plate/bowl rim fr
 9. 1 cw echinus bowl rim fr
 10. 2 mw single internal grooved rimmed shallow bowl rim fragments

- (3) (2)
1. Medium quantity cw body sherds
 2. 7 cw plate/bowl bases
 3. 1 mw do red glaze plate/bowl base
 4. 7 mw do red glaze body fr
 5. 2 cw handle roots
 6. 2 cw handle fragments
 7. 1 cw handle root which is also rim
 8. 2 cw jug rim fragments
 9. 1 cw double ridged (ext) red paint bowl rim fragment
 10. 1 flat topped cw bowl rim fr
 11. 1 cw amphora toe fragment

207/19

26/05/90

Weather: light breeze, hot
Workers: HT; F; T; Z; H

Finished (2). This consisted of rubble and the soil around and just below the rocks.

A panel was left along the southern bank as it appears to be a wall.

Stratum 3 consists of a light brown (almost grey) soil which is extremely hard packed. The soil itself is similar to that of (2), but no rocks.

Cleaned up the southern panel, and it is a wall.

2 bags pottery.

20719/25

27/05/90

③ □

1. Medium quantity of cw body sherds
2. 1 pointed amphora toe fragment cw
3. 4 cw handle roots
4. 1 cw handle fragment
5. 7 cw plate/bowl bases
6. 1 nw small bowl piece, with base section and inward curving open rim
7. 1 nw ds red glaze body sherd
8. 1 nw ^{plate} base small jar or pot
9. 1 cw echinus bowl rim fr
10. 1 nw echinus bowl rim fr with ds red paint
11. 2 cw outward folding jar rims
12. 2 cw double ridged bowl rim fr
13. 1 cw rim fr

OP 207/1

27/05/90

Weather: breezy, hot
 Workers: 1F; T; 2; F; H-T.

Continuing to work through ③. The soil is very fine, very hard packed. There are a few small stones.

Still getting quite a few bones.

Small rocks are fairly frequent on the southern side of the square.

We have come to a very hard clay level. It seems to be too hard even for a floor, and doesn't have bits of limestone or that are often associated with floors.

This becomes stratum 4.

1 bag pottery

It is difficult to assess this square without knowledge of the surrounding area. As no squares immediately surrounding this one have been cleared (see plan of 207 in back of book)

207/9

28/05/90

④ ①

1. Large quantity cw body sherds
2. 7 cw plate/bowl base fr
3. 2 cw cooking ware body fr
4. 2 mw "
5. 1 mw " " bowl base fr
6. 1 body fr w. horizontal grooving and traces of black paint
7. 5 mw ds red glaze body fr
8. 1 cw large sphere toe fr
9. 1 cw small "
10. 1 mw small complete handle of unguentarium?
11. 3 cw handle fr
12. 3 cw handle roots
13. 13 mw echinus bowl rim fr
14. 3 mw ext double ridged jar rim fr
15. 4 mw open rimmed bowl rim fr
16. 4 cw plain^{ext} folded over bowl rim fr
17. 3 cw ext folded over jar rim fr
18. 1 cw mortarium rim fr.

207/9

28/05/90

Weather: strong breeze, hot, hazy
 Workers: H.T.; T.; H.; F.; 2

Have started to break up ④ (the clay) with a pick.

It looks as though the wall along the southern bank is only one layer deep.

We have hit bedrock in the northern section of the square.

Have decided to take the northern half of the trench down to bedrock and leave the southern at the level of hard clay ④.

This now seems likely to have been an outdoor floor, hard packed from treading. The wall sits just above this (5 cm).

It is difficult to assess this square without knowledge of the surrounding area. As no squares immediately surrounding this one have been cleared (see plan of 207 in back of book)

The fine grey soil in stratum 3
we'll need to wait until next season
for a fuller picture.

In a sense this square was a punt
which didn't really pay off.

On the present evidence, it seems that
we have an outer 2nd occupation
wall with a hard pack courtyard
floor. (dumpy level 40.5 when datum = 0).

Whether the same floor was used by
1st + 2nd occupation, or whether there
was in fact a floor level ^{at least} ~~at~~ ³ as
well (which would have meant the wall
was 5-10 cm underneath floor level)
- I don't know.

Until we know more about the first occupation
in the surrounding area it's hard to say.

Stratification

The red clay with fragments of limestone
(visible in bank) which continues above
stratum 4 in the southern section of
the trench (i.e. above what has been
called a floor)* may be an accumulation
of floor over years of occupation.

* See section drawing at back of book. ✓

16

will need to wait until next week
for a further picture.

In a case this space was a part
which didn't really pay off.

On the present evidence, it seems that
we have an earlier 2nd occupation
level with a tank base (unidentified
floor - (sample level 40.7 when taken 20).

Whether the same floor was used by
1st or 2nd occupant, or whether there
was in fact a floor level at all
is not clear (which would have meant the wall
was 2-10 cm underneath floor level)
- 2 times.

But we have now about the first occupant
in the surrounding area it led to 2nd.

Identification

The red clay with fragments of limestone
(visible in bank) which contains a large
quantity of in the southern sector of
the trench (it is clear what has been
called a floor) may be an accumulation
of floor on top of occupant.

* The sector showing at back of bank.

The fine grey soil in stratum 3
looks as though it has blown in,
possibly from ash. No charcoal
whatsoever was found - this
is a bit.

207/8

30/05/90

①

Start quarrying low body structure
 in 2nd occ wall 207/7 for 2nd
 time. 3rd low wall rest for 2nd occ
 4. 2 cut plate/bank base for 2nd occ
 205. 1 cut plate base for 2nd occ
 206. 1 cut plate base for 2nd occ
 207. 1 cut plate base for 2nd occ
 208. 1 cut plate base for 2nd occ
 209. 1 cut plate base for 2nd occ
 210. 1 cut plate base for 2nd occ
 211. 1 cut plate base for 2nd occ
 212. 1 cut plate base for 2nd occ
 213. 1 cut plate base for 2nd occ
 214. 1 cut plate base for 2nd occ
 215. 1 cut plate base for 2nd occ
 216. 1 cut plate base for 2nd occ
 217. 1 cut plate base for 2nd occ
 218. 1 cut plate base for 2nd occ
 219. 1 cut plate base for 2nd occ
 220. 1 cut plate base for 2nd occ

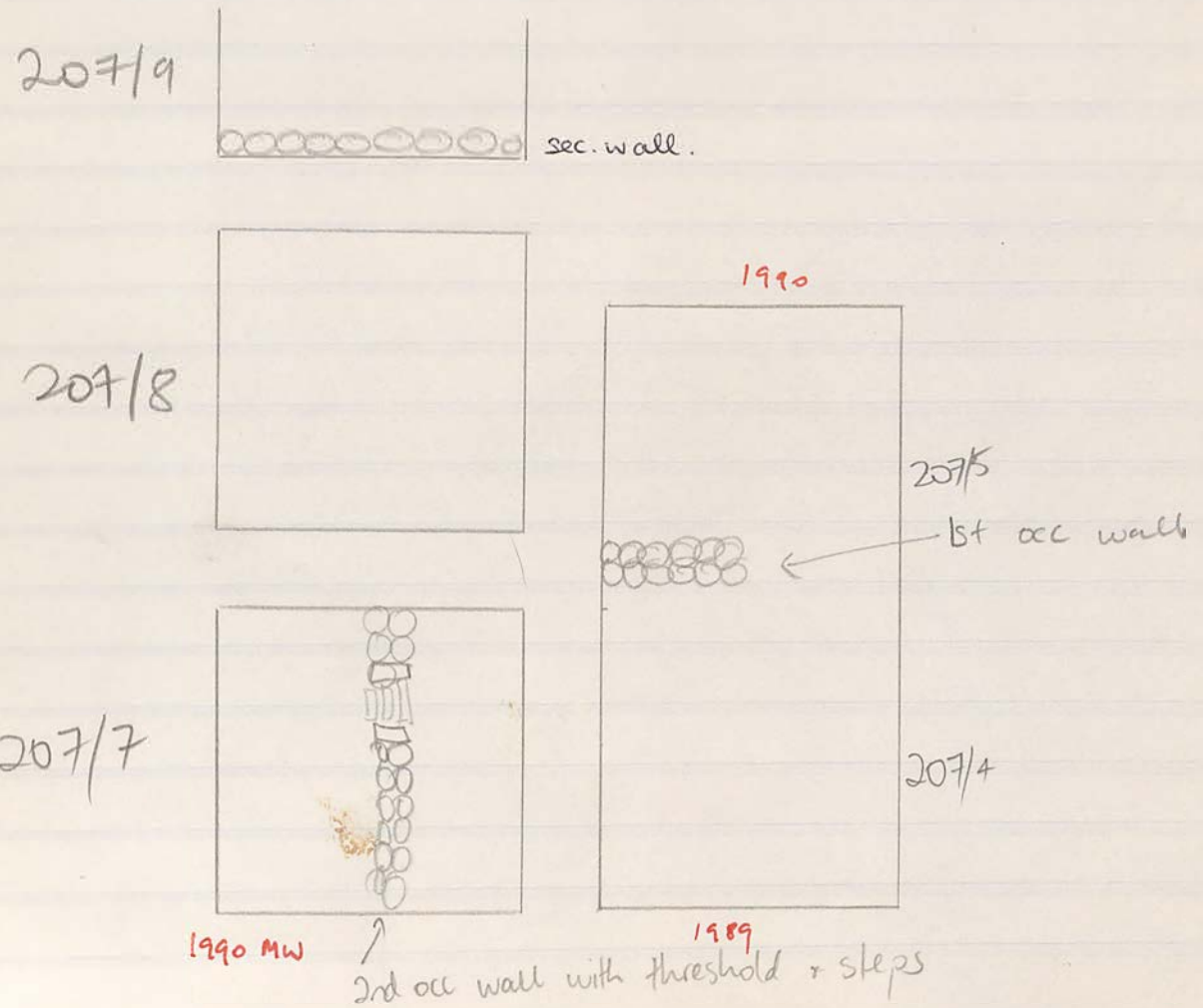
207/8

30/05/90

Weather: cal, hot
 Workers: H.T; T; Z; F; H

Commenced removing topsoil

We are hoping that this trench will provide a definition of the 2nd occ n-s wall in 207/7, as well as allowing elaboration etc of the present hypothesis that the 2nd occ wall in 207/9 is an outer wall backed by a courtyard.



207/8

31/05/90

- ① 1. Small quantity cw body sherds
2. 1 cw bowl rim fr with 45° overlapping rim, single groove
3. 1 cw rim fr water jar, open rimmed with single ridge band 5cm down
4. 1 cw unguetarium toe piece
5. 1 cw double^{ed} ridged bowl rim fr
6. 1 cw echinus bowl rim fr
7. 1 cw amphora toe fr
8. 1 cw base round bit
9. 1 cw body fr w horizontal groove
10. 1 cw body fr ds red glaze

207/8

31/05/90

Weather: light breeze, hot
Workers: H; T; T; H; F; 2

Continuing to clear around the rocks per to the photo. At this stage it appears as though the r-s wall in 207/7 continues only 1m into 207/8.

02/20/18

8/1008

207/8

02/06/90

- ② 1. Medium quantity cw body sherds
2. 1 cw amphora handle fr ^{rest}
3. 2 cw handle roots; 1 cypg handle fr
4. 3 cw handle fr
5. 2 cw amphora pe fr 6. 1 ds red glaze cw body
7. 10 cw plate/bowl base fr 8. 2 mw plate/bowl base fr
9. 1 cw jar shoulder/neck fr
10. 1 cw echinus bowl rim fr; 1 mwech b rim fr
11. 1 mw flake plate base fr ds red glaze
12. 5 cw v small double^{ed} ridged rim fr
13. 1 mw ^{to} single^{ed} grooved jar rim fr
14. 3 cw plain folded over rim⁵ fr
15. 1 mw flat-topped with single groove on top bowl/jar rim fr ^{outward flaring}
16. 1 large cw flat topped outward flaring single grooved bowl rim fr
17. 1 cw chunky open rimmed rim fr (v small)
18. 1 cw body with vertical grooving
19. 1 cw open rimmed plate/bowl rim fr

207/8

8/1008

207/8

02/06/90

Weather: hot & windy

Workers: H.T; T; F; H; 2

Observations

Started to remove rocks from the northern half of the square. The rocks, the soil and stones between and immediately below them for Stratum 2. The soil is medium texture and a medium dark brown. There are quite a few stones 3-5 cm in diameter.

OF1. Metal loop.

207/8

03/06/90

③ ①.

1. Large quantity cw body sherds
2. 3 cw bowl bases
3. 2 cw bowl bases w the ridge
4. 2 chunks of roof tiles
5. 1 cw handle fr, 1 mw handle fr red paint
6. 2 mw handle fr
7. 3 fmw ds red glaze body fr
8. 1 fmw open rim bowl rim fr red glaze
9. 1 mw ds red glass glaze body fr
10. 1 mw echinus bowl rim red paint
11. 1 mw ds brown glaze body fr
12. 1 cooking ware body fr
13. 4 cw^{ext} dentile ridged bowl rim fr
14. 1 cw plain banded jar rim fr
15. 1 cw outward flaring rim
16. 1 cw molavian rim inverted
17. 1 mw open rimmed jar rim fr

② ②

1. Small quantity cw body sherds
2. 4 mw echinus bowl rim fr
3. 2 cw handle rest fr
4. 2 cw plate/bowl base fr
5. 2 mw plate/bowl base fr w ds brown glaze
6. 1 cw base fr w ridge
7. 1 cooking ware body fr
8. 1 mw ds red glaze body fr
9. 1 cw water jar rim fr
10. 2 folded over jar/bowl rim fr
11. 1 cw amphora neck fr
12. 1 cw open rimmed jar rim fr
13. 1 black pebble

207/8

03/06/90

Weather: cold + windy
 Writers: H; T; Z; F; M

Continuing to clear rocks.
 The first layer of rocks on top and immediately below the topsoil is ①. Included in ② is the soil btw + immediately below these rocks.

I have taken the northern half of the square into the third stratum, which consists of medium sized rocks scattered through a hard packed medium brown soil.

The southern section has a much higher concentration of tumble, and much larger rocks. This is consistent with a general downhill trend of tumble, with very little - 207/9^{compared} to the extremely large and concentrated tumble found in 207/7. There is a fairly abrupt dividing line, so that the top of the northern section consists primarily of dirt, whereas in the southern section the tumble continues immediately below that of ②.

207/8

04/06/90

Weather: Windy, cold

Workers: H-T; F; Z; T; H

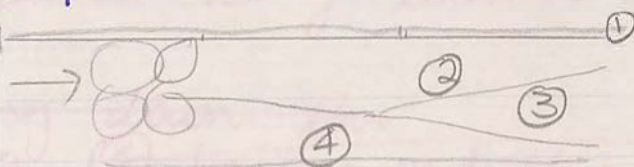
Taking out the heavy tumble in the Southern section of the trench. The soil as well as the tumble is different in the southern section.

Approx 1.30 m from the NW corner the soil becomes yellow with a chalk-like sheen in the bank. The tumble becomes larger (30-50 cm in diameter) and more concentrated.

Therefore I have decided to restrict stratum 3 to the northern section of the trench.

Stratum 4 is immediately below (2) in the southern section. In the northern section we are beginning to get a similar soil as well, so the whole square has moved down to (4).

North side of e. wall running 1.3 m from SW corner.



V. rough sketch of stratum so far. (PM 04/06)

- ① topsoil
- ② layer of rocks plus medium brown soil
- ③ Medium brown soil plus scattered tumble
- ④ yellow-chalkish soil, hard just a few small rocks, & a large concentrated tumble.

20718

04/06/90

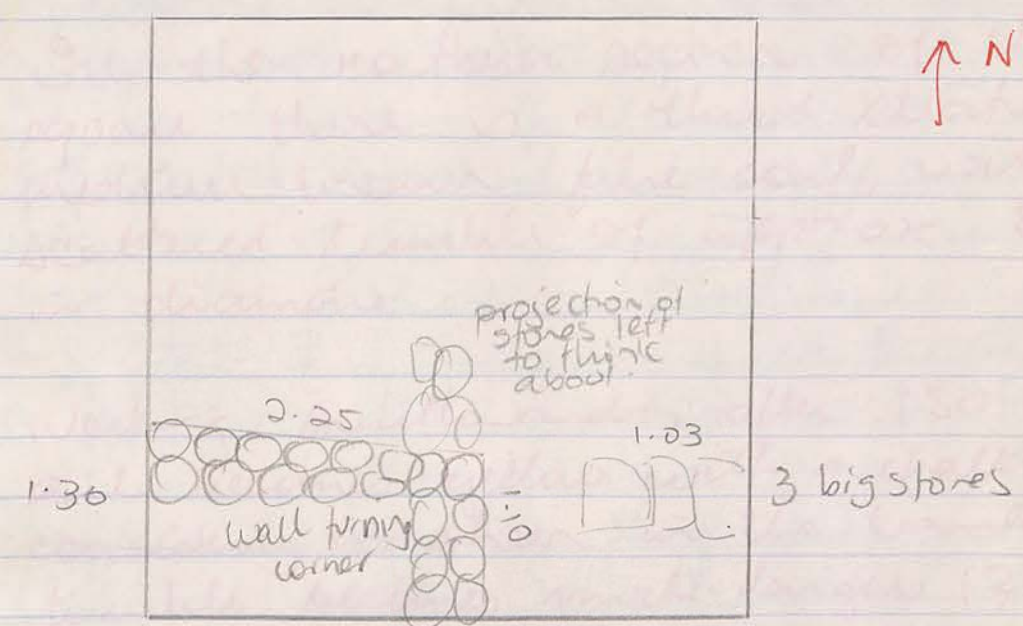
(1) (4)

1. Medium quantity cw body sherds
2. 1 mw body fr with 2 horizontal grooves
3. 2 mw echinus bowl rims
4. 1 mw open rimmed steep bowl
5. 2 cw ext folded-over jar rim fr
6. 1 mw ext folded-over "
7. 1 mw pierced neck fr
8. 1 mw int. folded shallow bowl fr
9. 1 greyware unguentarium toe fr
10. 2 cw amphora toe fr
11. 2 cw handle fr
12. 3 cw handle roots
13. 3 1 cw plate/bowl base fr
14. 1 cw plate/bowl base fr traces of red paint
15. 1 mw plate/bowl base fr
16. 1 mw bowl/plate base fr with ds black glaze
17. 1 mw echinus bowl r fr w traces of black paint.
18. 1 black pebble.
19. 1 large square lump of basalt.

(2)

1. Small quantity cw body sherds
2. 1 mw echinus bowl rim
3. 1 cw handle foot
4. 1 cooking ware body fr

In addition to the extension of the n-s wall in 20717 we may have another wall running e-w across the length of the trench which intersects with it.



In fact the wall doesn't run all the way across the trench. There are 3 very large stones in the eastern corner which look as though they've been placed, but we haven't covered enough to tell. Then a section of dirt, and then the wall turns a corner, and that e-w part runs into the western bank.

207/8

05/06/90

- ④ ②
1. Large quantity of cw body sherds
 2. 2 cw plate/bowl base fr
 3. 1 mw "
 4. 1 flat-bottomed bowl base fr (side on)
 5. 1 cw v. large handle
 6. 3 mw cooking ware body fr
 7. 4 cw folded-over jar rim fr (ext)
 8. 1 cw double-ridged (ext) bowl rim fr
 9. 1 flat topped outward flaring rim fr
 10. 5 mw ds red paint echinus bowl rim fr

- ④ ①
1. Large quantity cw body sherd
 2. 2 mw orange-red ds glaze body fr
 3. 5 mw ds red-brown glaze body fr
 4. 2 roof tile fr
 5. 1 cw handle fr
 6. 4 cw plate/bowl base fr
 7. 2 cw ringularium toe fr
 8. 2 cw ext folded-over jar rim fr
 9. 3 cw ext " bowl/jar rim fr
 10. 1 cw inward flaring mortarium rim
 11. 1 mw outward flaring open rimmed jar/bowl rim fr.

207/8

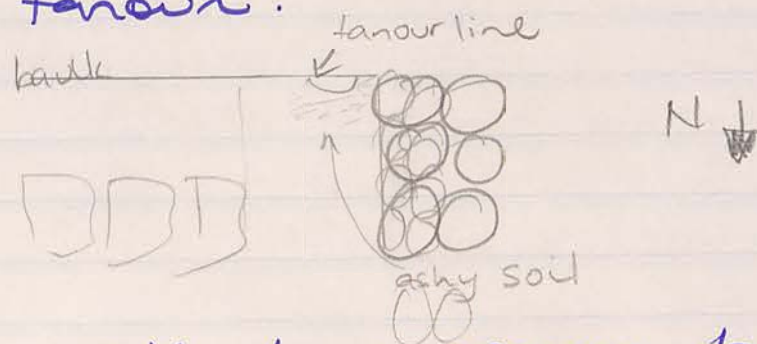
05/06/90

Weather: hot + extremely windy
 Workers: H; H-T; Z; T; F

We have come to a level point across the bottom of the square. It is hard in patches but not in others (at times it is purely soft dirt). However it does roughly correspond with the 2nd occ. floor level found in 207/7, and there is definitely a gap in the rubble.

Before doing anything else we are clearing between the corner of the wall and the three large stones in the SE corner.

The soil becomes darker. In the corner between the wall and the bank there is a line of leaked earth and fragments of pottery that look as if they might be part of a tanour.



The soil here appears to be baked clay and is very hard (although uneven)

207/8

05/06/90

(btw wall corner and southern baulk)
is where the tower is

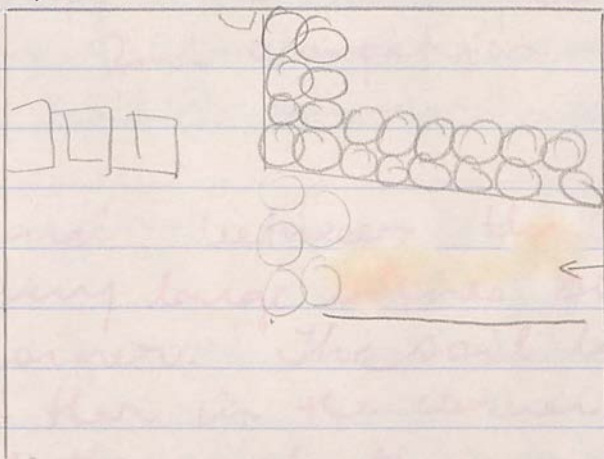
- ④ 1. Small quantity cw body sherds
- 2. 1 cw water jar rim fr
- 3. 1 cw handle fr

right up to the corner of the wall.

OF1 Face of figurine found going down
a level btw the wall and the
projection of stones that comes out
from the corner that Hadji ta-he
tells me is a wall.

Have gone down from the projection
across to the western baulk.

(this is
upside down)



Am digging down
between the projection
and the wall

Because 1) want to
look at the projection
2) want to define the
wall and am in a
bit of a hurry

3) want to keep some
of this level in
case it's a floor.

20718

06/06/90

- ⑤ ②
1. Large 7 cw ls
 2. 7 cw plate/bowl leases
 3. 1 cw amphora + ext
 4. 5 cw folded over, bowl/jar rim fr
 5. 1 cw " " "it bowl rim fr
 6. 1 cw flat topped outward flaring rim fr
 7. 2 mw edrimus bowl rim fr
 8. 5 mw open rimmed bowl rim fr

- ⑤ ①
1. Large cw ls
 2. 5 cw plate/bowl lease fr
 3. 3 mw bowl lease fr
 4. 3 cw handle roof fr
 5. 2 mw edrimus bowl rim fr
 6. 2 cw folded over jar rim fr
 7. 1 mw open rimmed bowl rim fr

- ⑥ ③
1. Small 9 cw ls
 2. 2 cw sch. bowl rim
 3. 1 cw plate bowl lease fr
 4. 1 cw amphora toe fr
 5. 1 mw flat topped outward flaring bowl rim fr

Floor? N
Floor S. under tumble
more tumble

20718

06/06/90

Weather: Cal, hot

Workers: H-T; T; F; H; Z (plus Amira after breakfast as big fight in Radio trench)

Continued down in ⑤. Am calling this a new section stratum to distinguish it from the northern section of the square which will remain at this level for the season, and to draw a new stratum in case the level left in 20718 N is a floor.

Elevation for the level in 20718N is: ?

The projection of stones H-T-H was so fond of has now been removed, and I am ~~going~~ extending this deeper trench across to the eastern bank. This should clarify the 3 large stones, and follow the line of the wall.

We have found another level of patchy hard clay 10 cm below the level of 20718 N. I have gone through this to allow definition of the wall.

This gives us a new stratum of medium sized tumble. This is stratum 6.

This clay would have to be a floor.
It matches the level immediately beside
it in 207/7. ~~However~~

Given what we presently know, it
is likely that this is an outer wall, ^{no}
so that the stairs in 207/7 ~~lead~~
~~into~~ are the front entrance.

The terracer fragments found in 207/8
beside the wall would then be
just outside the house, presumably
under some sort of verandah.

The hard earth is very uneven, though.
For the first 50 cm it is level, then
it rises and becomes very jagged.
This may be due to over-enthusiastic
excavation (I was measuring with Jerry
at the time 😊) but I think that
this is unlikely as it's very hard, and
even H.T. would think twice.

NB. ⑤ is a new stratum not just
to distinguish it from 207/8 N.
The soil has changed to a
medium brown similar to ②.

207/8

07/06/90

- ⑥ ①
1. Medium quantity cw body sherds
 2. 7mw bowl base fr
 3. 1mw red dripware body fr
 4. 1mw body fr w. brown paint inside
 5. and splashes b.p. on outside
 5. 1 cw amphora handle (the 2 stuck together sort)
 6. 1 cw handle root
 7. 1 cw folded-over bowl/jar rim fr
 8. 1mw outward flaring fishbowl rim fr
 9. 2mw rim plus shoulder fr of open-rimmed inward curving small pot.

- ⑥ ②
1. Medium quantity cw body sherds
 2. 2 cw handle roots
 3. 5 cw plate/bowl base fr
 4. 1mw flat based bowl fr
 5. 1mw cookingware bowl base fr
 6. 1mw echinus bowl rim fr
 7. 1mw shoulder plus rim fr of open rimmed pot.
 8. 1 cw ext. folded-over jar rim fr
 9. 1 cw ext. folder-over bowl rim fr
 10. 1mw rim fr for a lidded pot/jar
 11. 1mw outward flaring fishbowl rim fr w. red paint inside and around outside top
 12. 1mw open rimmed outward curving bowl rim fr
 13. 1 cw amphora toe fr
 14. 1 piece basalt
 15. 1 cw outward flaring flat topped jar rim fr.

207/8

07/06/90

Weather: Calm, hot
 Workers: H;T, H; F; Z; T; A.

This is the last day of excavation and the trench is unfortunately far from finished.

- 1) I will go down in the panel along the wall as far as possible in an attempt to find another floor level.
- 2) The 3 rocks are sitting on soil so will remove them, but by going behind.
- 3) I'm going to leave the tower as is, as it can only be properly excavated by coming at it from ~~the~~ the other side.

- Got 1. done but didn't find a floor. We had to leave in a hurry.

Comments

It would be good to take out the bank btw 207/7 and 207/8 to

- 1) trace the 1st occ wall running e-w from 207/5.
- 2) identify the rest of the fence which juts out of the bank beside the wall in 207/8 S.

The dumpy level of the floor in 207/7 which ~~was~~ bordered the wall which continues into 207/8 is -9.5 (datum = 0). The level of the hard clay which borders the corner of the wall in 207/8 which I thought might be a floor is -4.0 (datum = 0). I don't know what that means (☺), but by eye they did look to be roughly level, although this area in 207/8 was very uneven (see comments for 06/06/90).

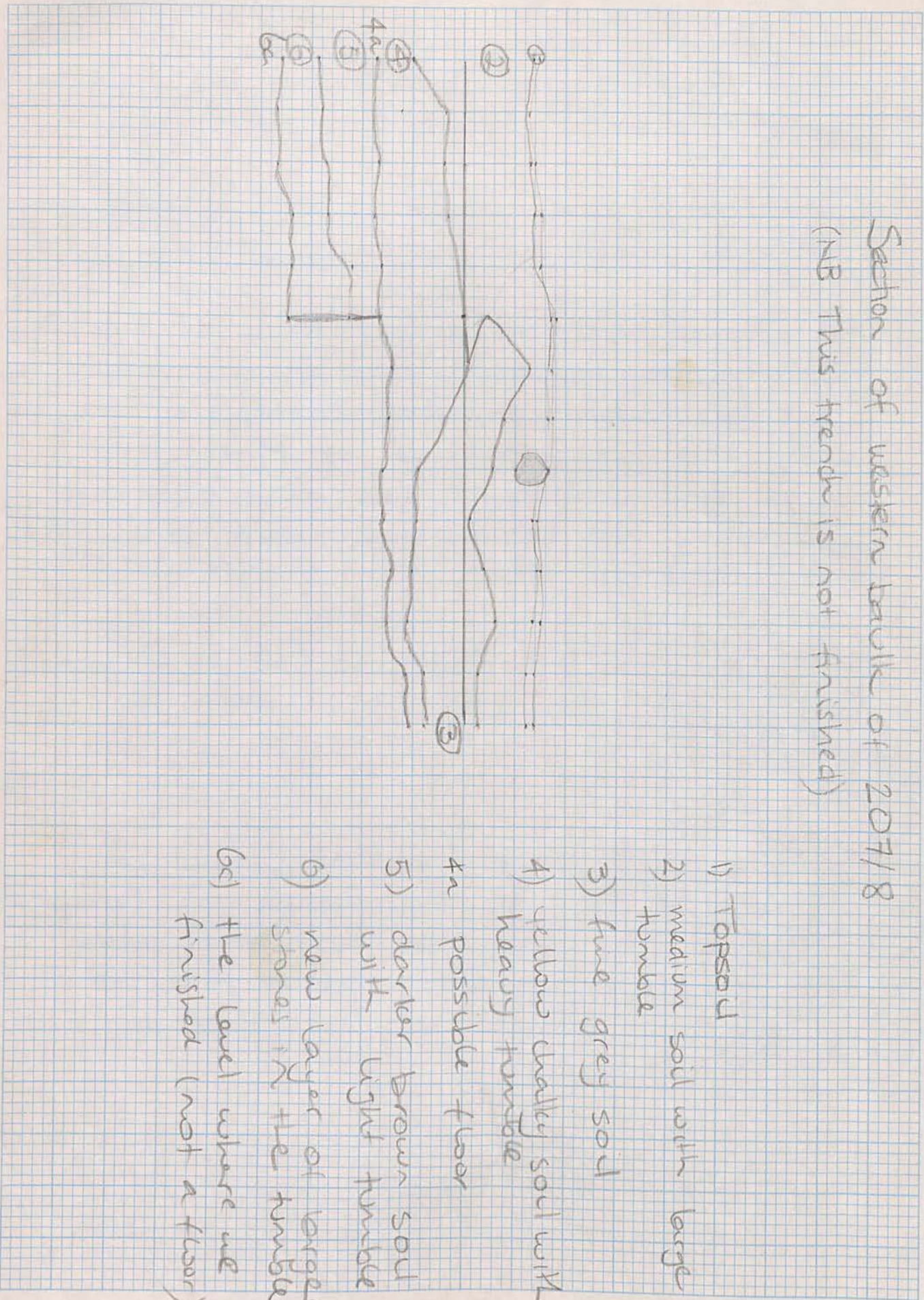
If this is an outer wall, and the floor levels tentatively established are outdoor floors, then the

theory that in 207/9 we also had an earlier outer occ. wall, with the floor north of that an outdoor floor, needs to be reviewed.

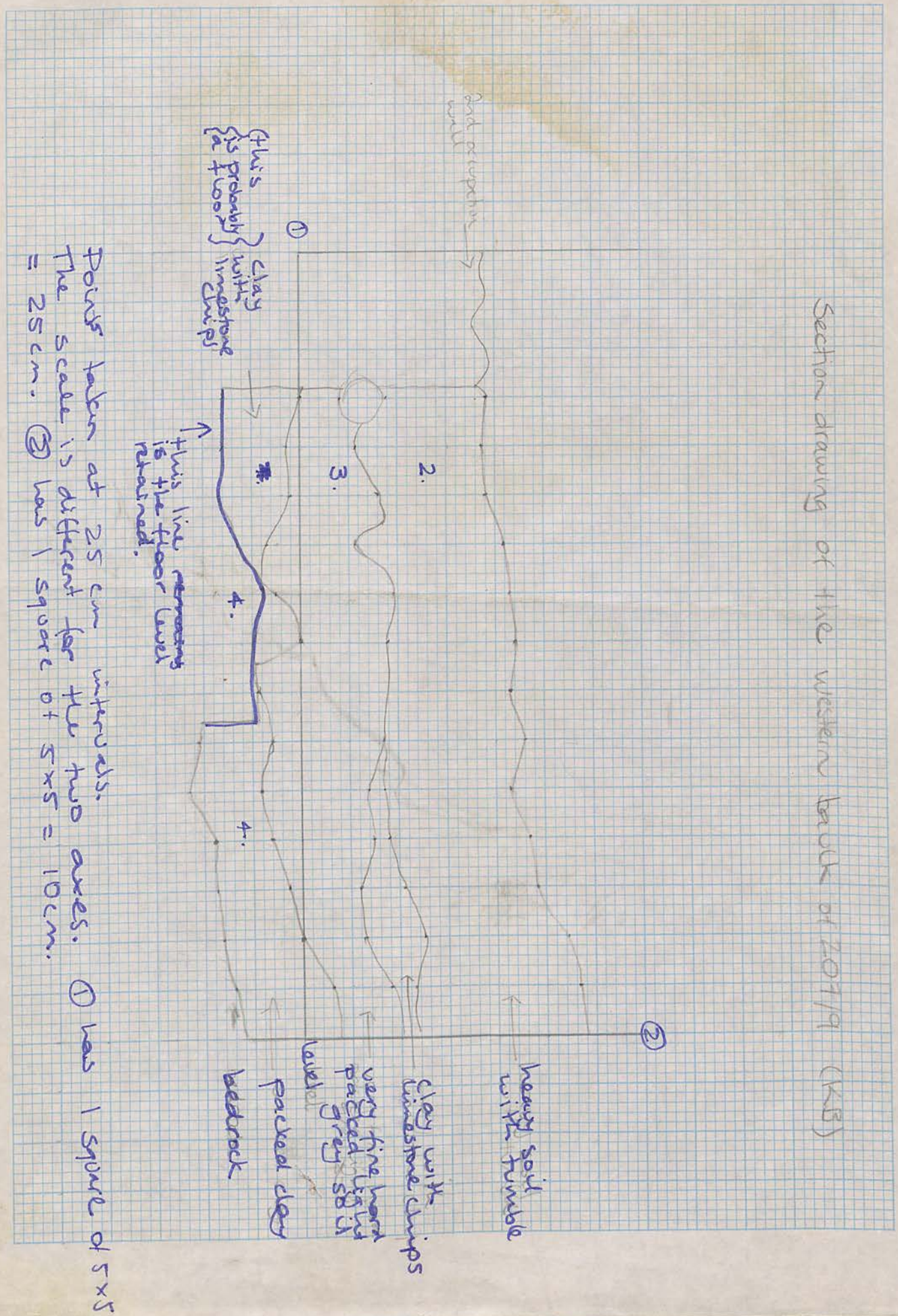
It may be that we are dealing with 2 different occupations. Certainly the wall in 207/8 goes at least 50cm deeper than in 207/9 (I'm sorry about the above inaccuracy, but I'm ever so sorry), the bit of paper with the measurements of the wall I took on Saturday has disappeared and I'm too tired to find it in the bin (☹).

At the moment there is no n-s wall closing off the 1st occ room in 207/5.

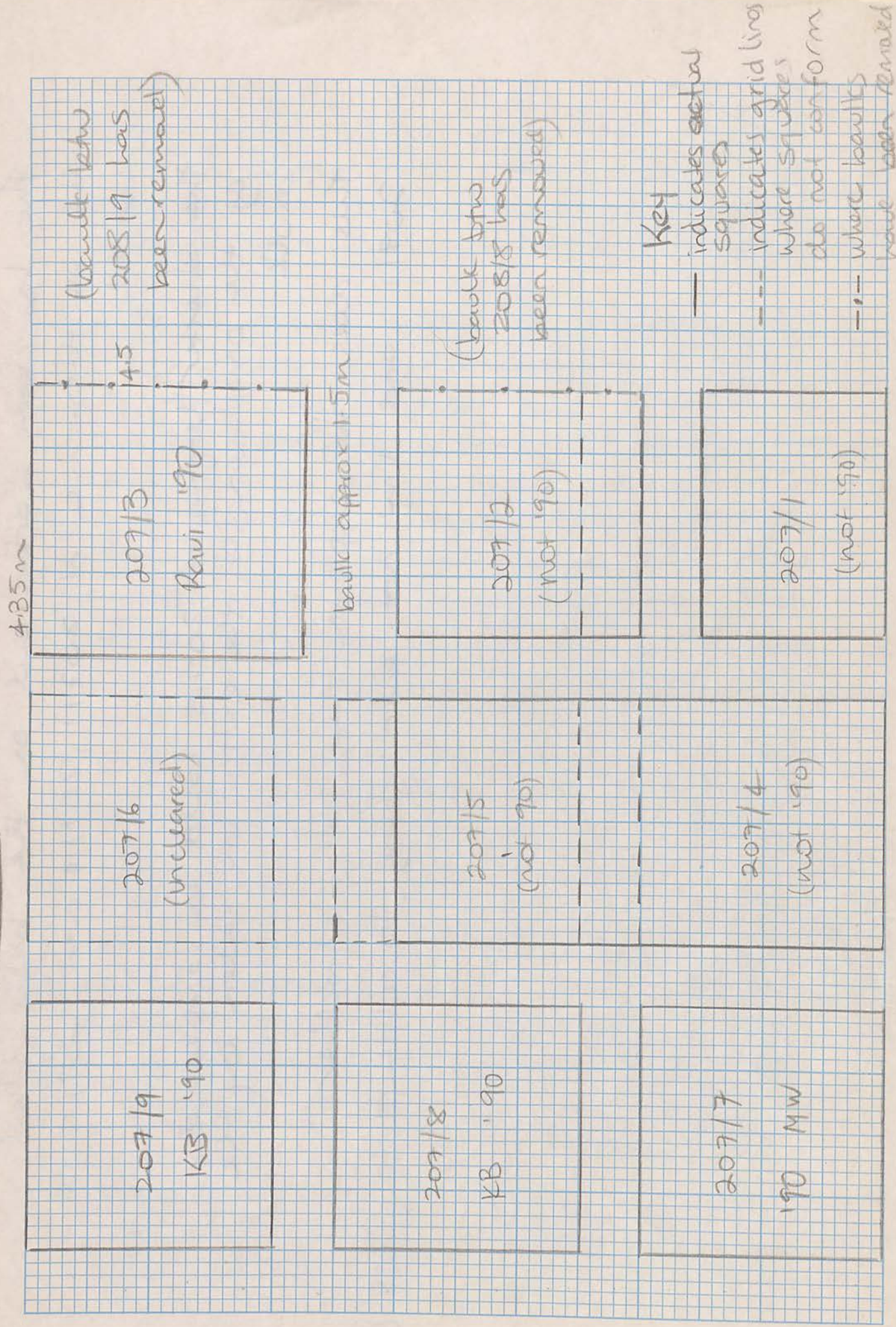
The dumpy level of the floor in 207/8 N is 15.0 (datum = 0). Compare this to the floor in 207/7 (which we would expect it to relate to if it is a floor), which has a level of -9.5 (datum = 0).



- 1) Topsoil
- 2) medium soil with large humble
- 3) fine grey soil
- 4) yellow crumbly soil with heavy humble
- 5) possible floor
- 6) darker brown soil with light humble
- 6) new layer of larger stones in the humble
- 6) the level where we finished (not a floor)

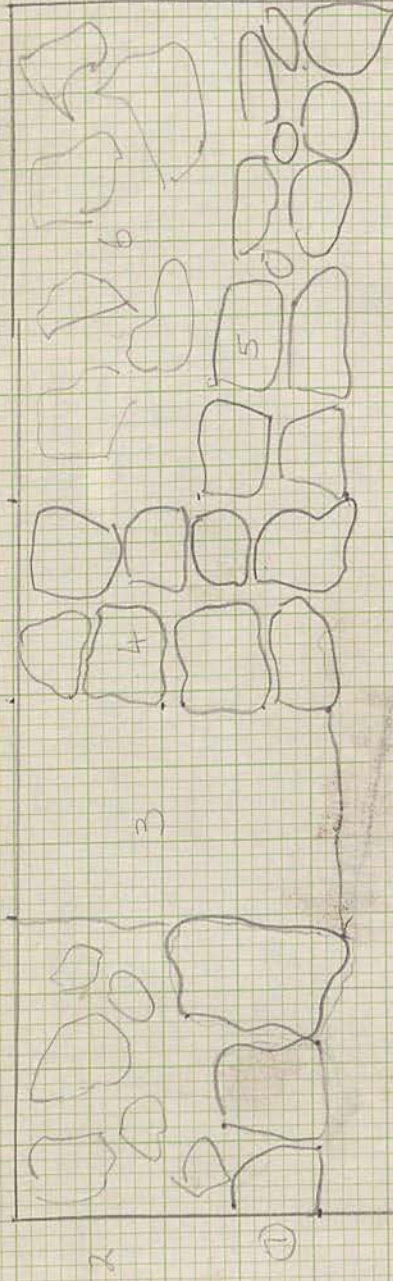


Plan of 207



See comments on the back.

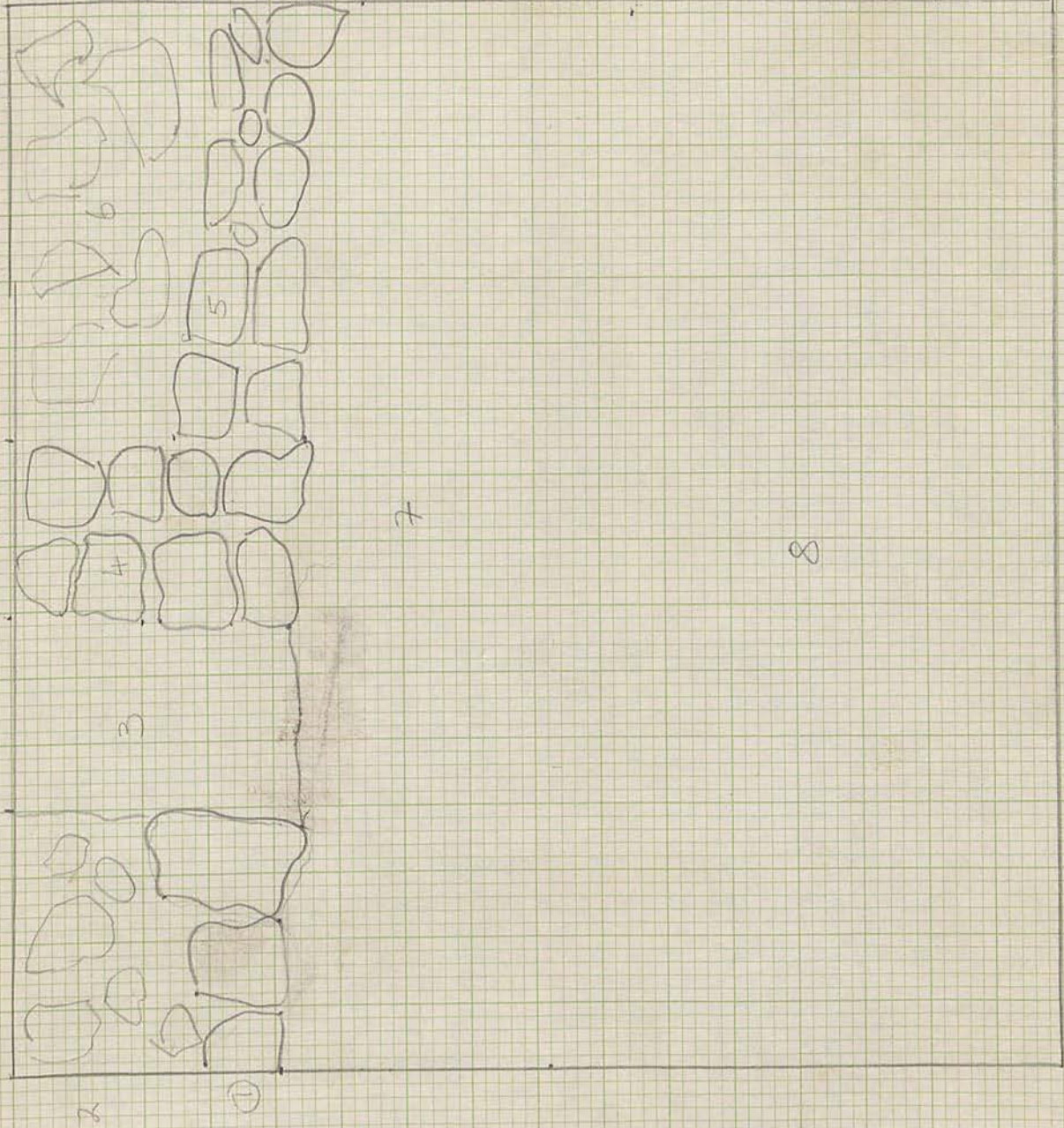
Plan of 20718 (the square was unfinished at the end of the 90 JK Season)



- 1) 3 large rocks which had been placed, but have soil underneath, and no clear function
- 2) Tumblers unclear as yet
- 3) Extremely hard clay with a section of tanour coming out of the bawlt in the corner of the wall. Possibly a floor level as both D and S are on it.
- 4) Wall which continues out of 207/7.
- 5) (4) turns a corner into (5), which means we probably have an outer wall.
- 6) Tumbler as yet unclear
- 7) Level that was reached on last day (no sign of one)
- 8) Possible floor level, left as a central point and also because of time constraints.

This has been worked out on the basis that
 the southern line of 20711, 20714 and 20717 is
 correct.
 The shorter length of 20715 could be explained
 by the omission of the extra 1m taken by the
 wall.
 This does not explain the even smaller
 20711 and I'm not even going to attempt to guess $\textcircled{11}$

Plan of 20718 (The square was unfinished at the end of the 90 SK Season)



- 1) 3 large rocks with the top placed, but have soil underneath, and no clear timber
 - 2) Tumble uncleaned as yet
 - 3) Extremely hard clay with a section of taro's coming out of the middle in the corner w/ the wall
- Possibly a floor level as both $\textcircled{1}$ and $\textcircled{4}$ sit on it
- 4) Wall which continued out of 20717.
 - 5) $\textcircled{4}$ turns a corner into $\textcircled{5}$, which means we probably had an outer wall
 - 6) Tumble as yet uncleaned
 - 7) Level that was reached on last day (no significant)
 - 8) Possible floor level, left as a control point and also because of time constraints.