

1990

Final Fortnight

1990

Domestic Quarter

Radi Ukhd

178/1

continue work on [3] which is in SW sector

26.5

bounded by EW + NS walls

27.5

continue on [3] also [5] at N of EW wall

28.5

loomweights, (30-40) in [3]

also continue on [5] soft soil

29.5

[3] continues soft brown soil.

[5] fragment of fig 90.485. Stamped copper handle 90.506

APTAMITION

30.5

[7] below [3]

[7] = floor level covered with loomweights

in SE corner, next to wall, a large CW jar.

also basalt grinding stone

31.5

(PJC Bk 2)

2 small holes discovered after removal of loomweights

inc. ^{sketch} stake & teeth

+ basalt plate. Pl II, 34-36.

with

2.6.

(PJC Bk 3)

179/8 begun (unorthodox alignment) ^{with loom} →

3.6.

walls emergent at E and W also EW wall to NNE

4.6.

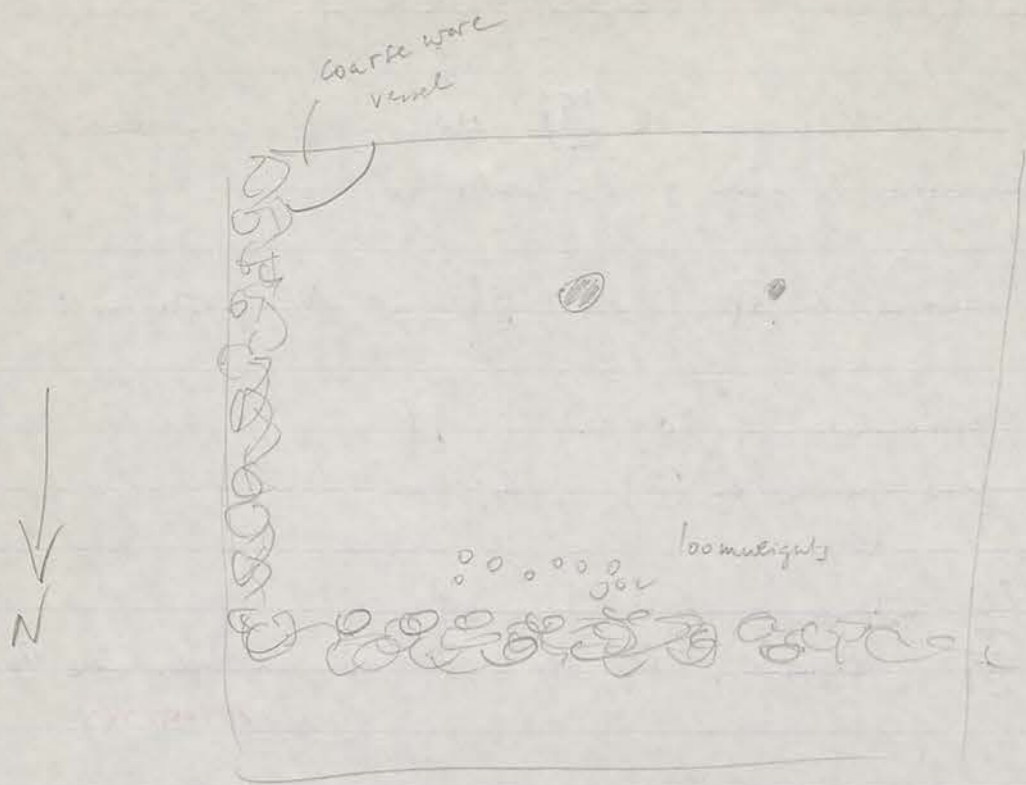
Start on [6] = beneath [4] = floor level soft soil.

5.6

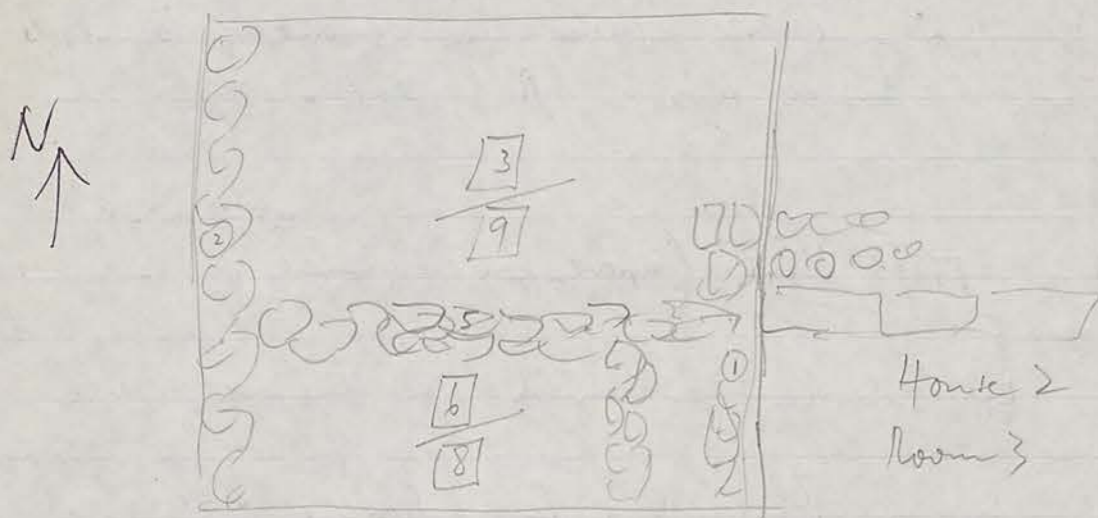
Start on [3] at S of trench.

7.6.

work on [9] = floor level at S figure from 90.587



179/8



1990 Final Fortnight

Domestic Quarter: Late Barneff

Marco 206/5

p. 22 27.5.90

28.5.90

29.5.

30.5

2.6.

3.6.

4.6.

5.6.

6.6.

Began 206/5

wall continues from 206/4 through baffle on W bank of 206/1

Still top soil

then shift tumbled

Continue on ③

Continue on ③

Continue on ③

Continue on ③

Continue on ③

much bone

much bone

Spit 1.5m from E baffle (1.5m x 4m)

limestone lent.

Stoa 7.6

Continue on ④

Jack 26.5

16.5 (p. 11) well or cist (333/4)

new base 333/8 (a courtyard)

line of stons NS - continuous

27.5.

below top soil (90.53) stamped anthracite

28.5.

2.6. digging through hard limestone with fragments of a courtyard NB cistern + basin

2/200 207/9
2/200 207/9

2/200 207/9

2/200 207/9

2/200 207/9

2/200 207/9

2/200 207/9

2/200 207/9

2/200 207/9

2/200 207/9

2/200 207/9

2/200 207/9

2/200 207/9

2/200 207/9

1990 Final Fortnight

Domestic Quarter Kate Barnett.

207/9
26.5.90

finished ② = removing rubble
wall along S bank ③ = "hard-packed soil"

27.5.90. still on ③ plentiful bones.
very hard clay stratum (= floor ??) ④

28.5. break ④ with pick. Wall at S only one course
bedrock already at N
work at N leave ④ at S = outdoor floor

207/8

30.5 top soil
31.5 top soil NS wall of 207/7 continues only 1m into 207/8

2.6. rubble from N 1/2 of square
3.6 rubble removed now ③ medium size rocks scattered
through hard-packed medium brown soil.

4.6. rubble from S E corner (soil + rubble different from N)
soil: yellow + chalky on bank. rubble is larger
more concentrated = ④

Wall at S fell after 1.10 in hours W (length 2.25m)

5.6. at S bank just to E of NS wall a tanour
surrounded by ash soil

6.6. projection of stone removed

26 May →

Main Gate.

SMG 2 26.5.90 makes taking steps.
see S tower + circuit wall.
middle wall for S bank.

27.5. Complete 100m weight SW corner of head
an iron dagger.

28.5 spindle that
leaves looking wave

29.5. Crushed Limestone (4)
5 clay loomweights between middle wall + circuit wall

NB. Circuit wall does not immediately ^{assume header} ~~use~~
stretcher construction.

SW corner taper fill the mixed with limestone deposit.

middle wall built on narrow band of clay above limestone deposit (which has fine dark brown soil in middle.)

Wall of S tower down to bottom of third preserved course.

5 water marks in each course. approximately 0.54 x 0.56

EMG 5 NORTH W. Completed 28 May

SMG 1 clearing from 1988 excav.

2.6. SW corner of interior space. 90.638 irregularly shaped. hard floor of reddish-brown clay: not hard-packed limestone or else. no shelf.

4.6. extended SMG 1 S 3m to W. Join of circuit wall with tower but structure more random than expected.

9.6. clay like floor sketch etc.

The Column of Trajan and Its Heirs:
Helical Tales, Ambiguous Trails

3

Of historical narratives, one part is *historia* or systematic fact-finding, another part *mythos* or fairy-tale, and another *plasma*, or plausible invention. And of these *historia* is the exposition of certain events that are true and have occurred: Alexander's death by treacherously administered drugs in Babylon. And *plasma* deals with events that have not occurred but are similar, in the retelling, to real events: the hypotheses of comedies and mimes. And *mythos* is an exposition of events that have never occurred and are false: poet-fabricated tales.

Sextus Empiricus, *Adversus Grammaticos* 263-264

Although few would deny that the Column of Trajan in his Forum stands among the greatest of all Roman monuments, scholars fail to agree on what the column represents. Placed on a high, square podium, once containing Trajan's ashes, and closely boxed in by buildings, the column rises from a laureate torus molding to the great capital, which originally bore a gilded bronze statue of the emperor (fig. 3.1; pls. 3.1-3.3).² This lofty statue, marking the long axis of the Forum, may have been visible from the entrance, a numinous figure mediating between earth and heaven.³ The eye-catching marble column, supporting the imperial image, is wrapped in a helical band of narrative reliefs on which the fame of this monument, perhaps even of Trajan himself appears to rest.⁴

These reliefs consist of more than 2,500 figures, arranged in complex landscape and architectural settings, and include as many as 155 scenes.⁵ Apparently, they present the history of the two Dacian wars of 101-106 A.D., when Trajan gathered the province of Dacia into the Roman Empire, bringing much glory to himself. The artist adopted an epic-documentary mode of historical representation, previously developed to celebrate the deeds of conquering emperors in Roman art.⁶ Despite the grand scale of the concept and the height of the column,

1990

Nwtk Tower:

EM 45 W.

26 May

Small barrel primer above floor at W of entrance pass
bronze coin above hand-painted floor 90.525

drone slopes upward to W.

NMG 1

mud wall along E of track at on ashlar block,
had a substantial layer of plaster / colored band

27 May

tiny speck of charcoal at floor level

28 May

French completed

29 May

NMG 2

pegged in 4 x 3 m

by 7.45 central v. large mass of coarse ware jars

30 May

much plaster no wall-remnant

(sketch stratigraphy of N wall NMG 1 30.5.90)

31 May

top soil: reddish soil below light brown top soil.
NE corner: hand-packed limestone 0.74 m
down from upper soil surface.

2 June

level w. platform at SW corner = the 'bench'
traces of a hand-smoothed floor: higher level than 'bench'

3. Fine bedding of bench to height of bench
 on platform which produces the 'bench' or 'shelf' walls
 are incised guidelines for position of lowest course of
 the wall proper.

remove slight soil of bench at W

perhaps find floor level to judge from smooth section
 at E of trench) = 0.45 m above the planned
 floor surface.

at S wall is 0.20 m wide
 blocks on wall are 1.40 x 0.53

see 4.6.90 for sketch

4.6.90
NMG 3 (5 x 3 m) for N boundary of inner spec.

5.6.90. whole trench = laid blocks

SW corner lamp 90.603 Hellenistic
 0.40 m to surface of hypocaust
 preserved block

space at W is a puzzle

6.6.90. can clearly discern N boundary of inner spec

NB chamfered (drafted) edges of blocks

7.6.90 Just reveal top of 2nd preserved course; then leave it

1990 Stoa. Final Fortnight

391/3

26 Aug 2nd layer of rubble ϕ 1019

27 Aug (b) bedrock at W near wall.
 wall is clearly a wall 2 or 3 courses above bedrock

28 Aug removing soil above bedrock pegged at 363/2 low of 364/3
 wall 0.07 - 0.08 m thick

29 Aug NW corner of trench: tanour (w. front base) 0.43 m down to
 soil surface
 (higher work on 363/2)

363/2

31.5.90. final clearing of rubble ϕ 11, -28 and N
 rubble removed

2.6.90 no definition of wall soil (hard) light-brown
 horizontally laid blocks in SE corner.
 EW wall emerges

3.6.90 hard-packed surface at 0.53 m down from soil
 surface at S bank

4.6.90 mud brick removed
 5.6.90 EW wall emerges clearly perhaps a doorway at E
 0.92 m

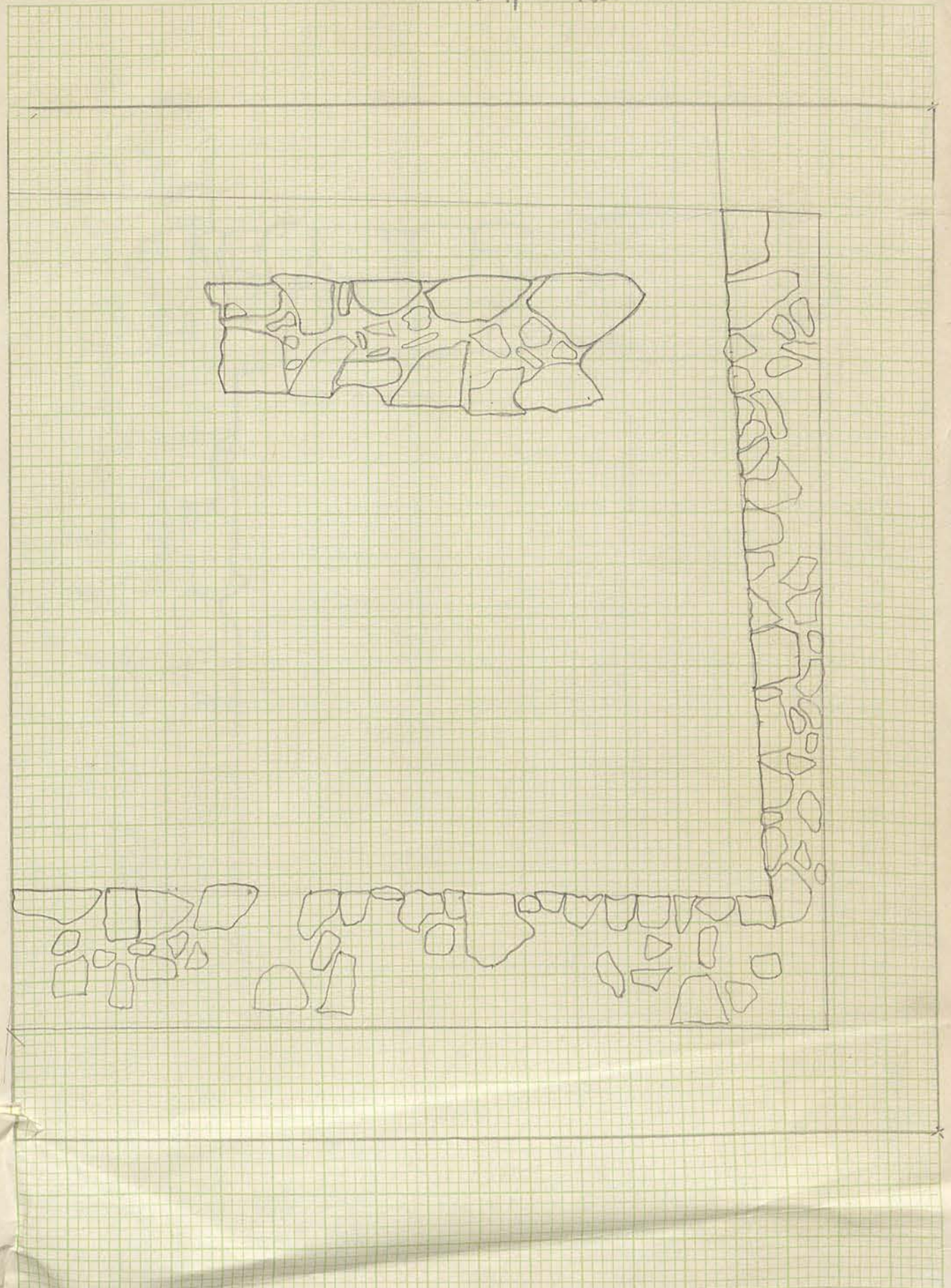
6.6.90

1989

2mm Squa

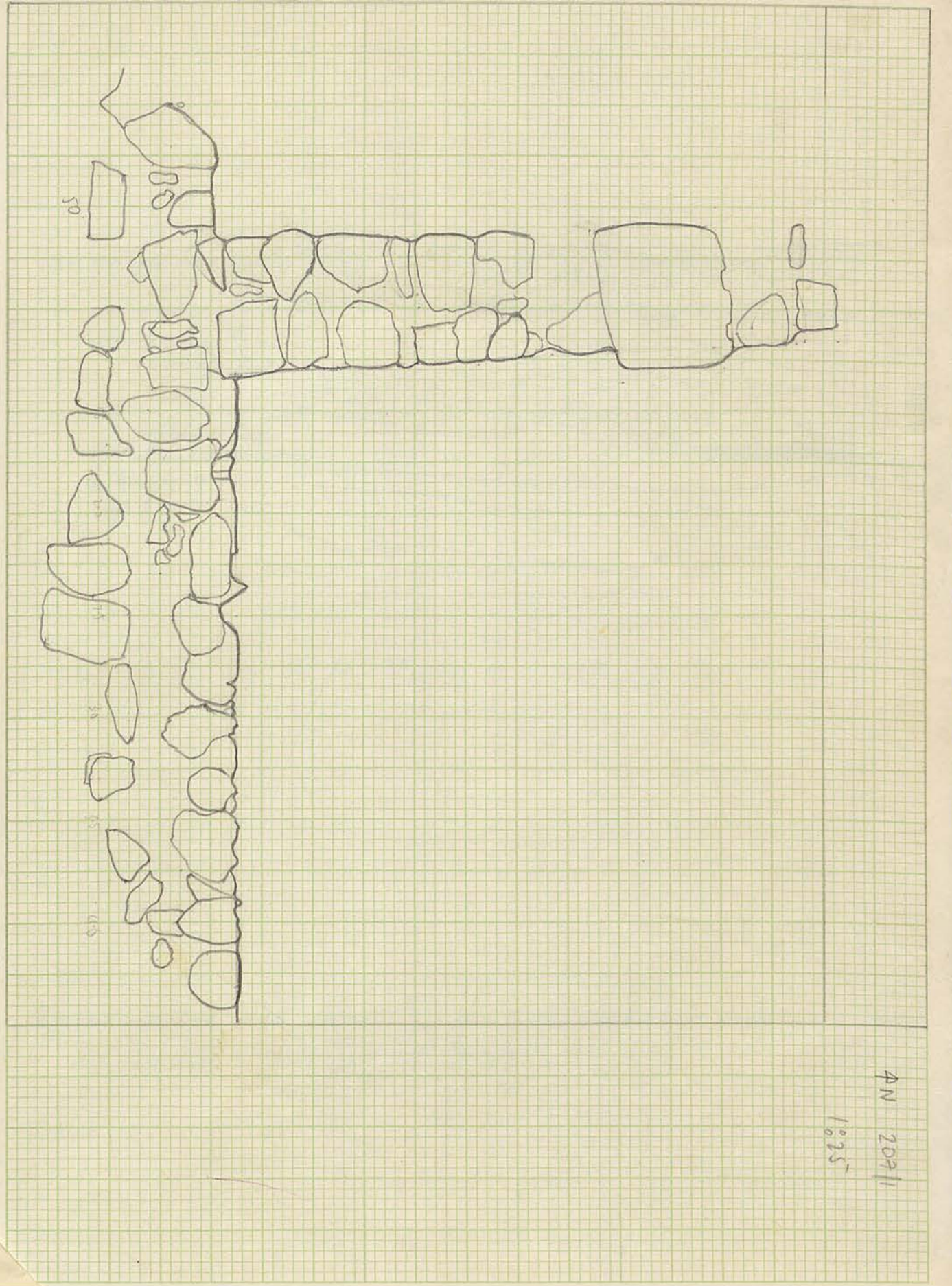
AN

207/2 1:25

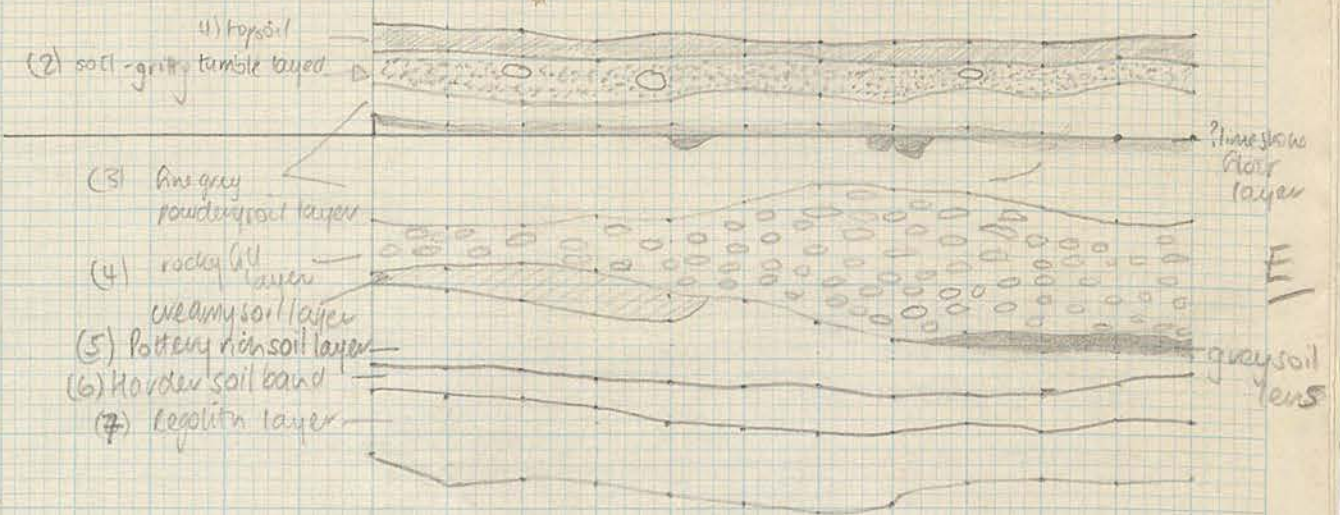


SE corner AREA 25.

Handwritten notes on the left page, including dates and descriptions of observations. The text is written in pencil and is somewhat faint and difficult to read. It includes phrases like "31.8.90", "30.8.90", and "31.8.90". There are also some mathematical symbols like ϕ and π . The notes appear to be a log or a series of observations related to the site shown in the diagram on the right page.



AN 2021
1025

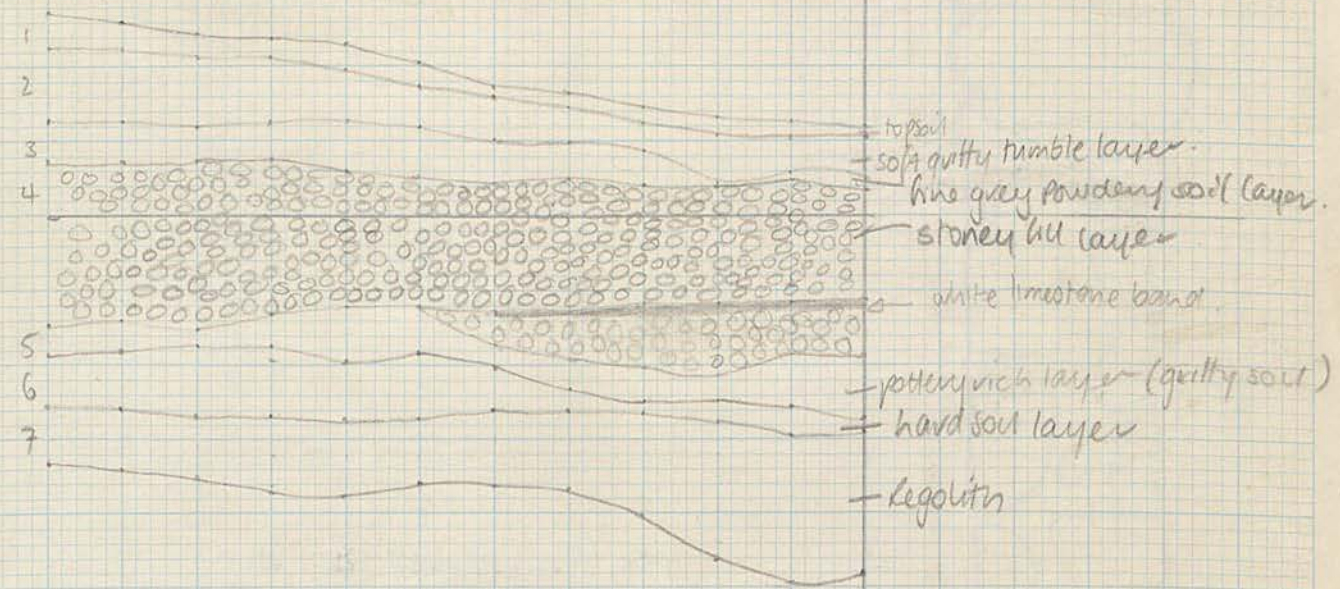


(6) Hard soil band - similar colour to (5) pick marks still evident where they struck
 - soil in (5) grittier than in (6)

20711 East bank

0 25 50 75 100 125 150 175 200 225 250 275

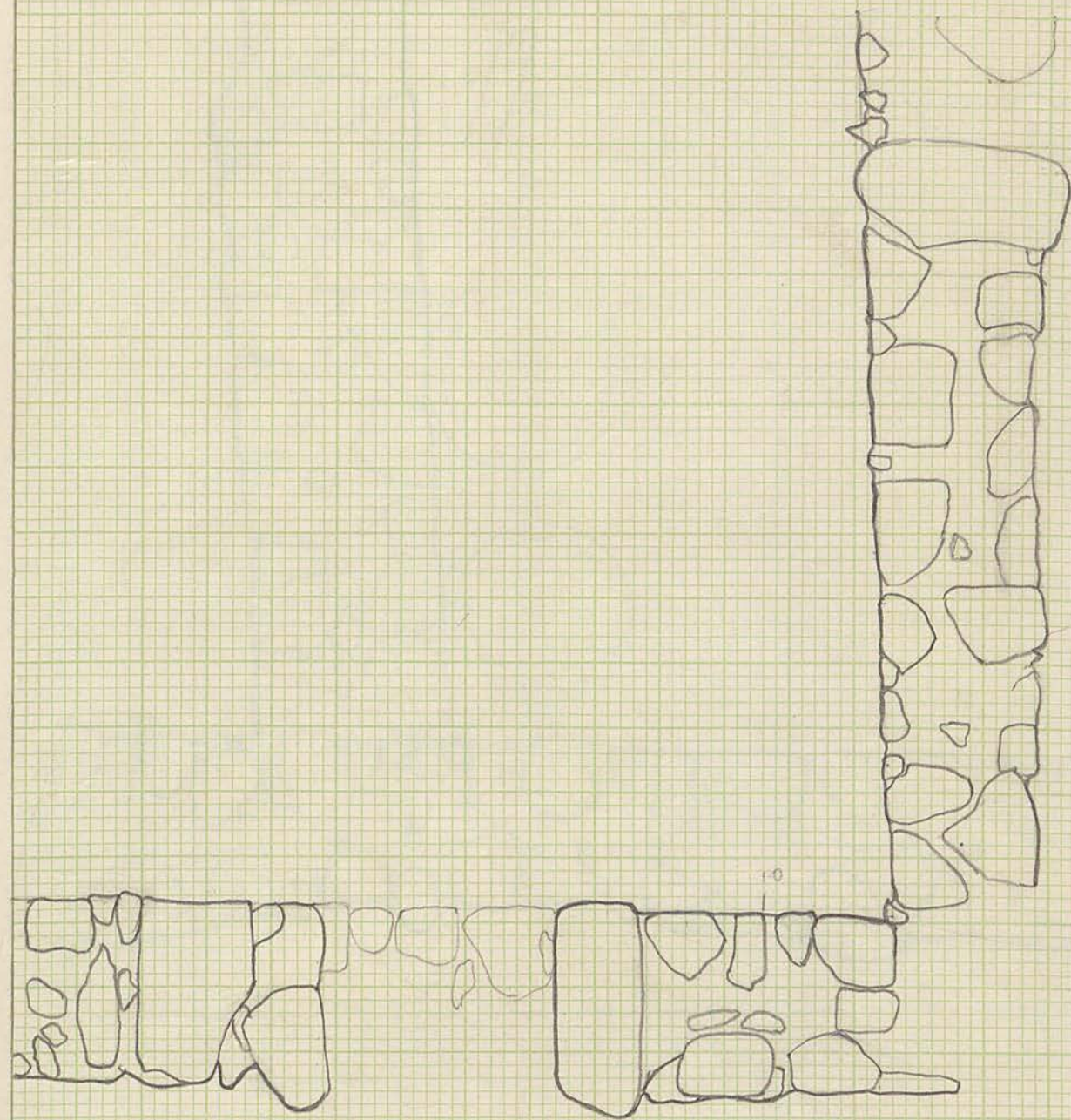
← N

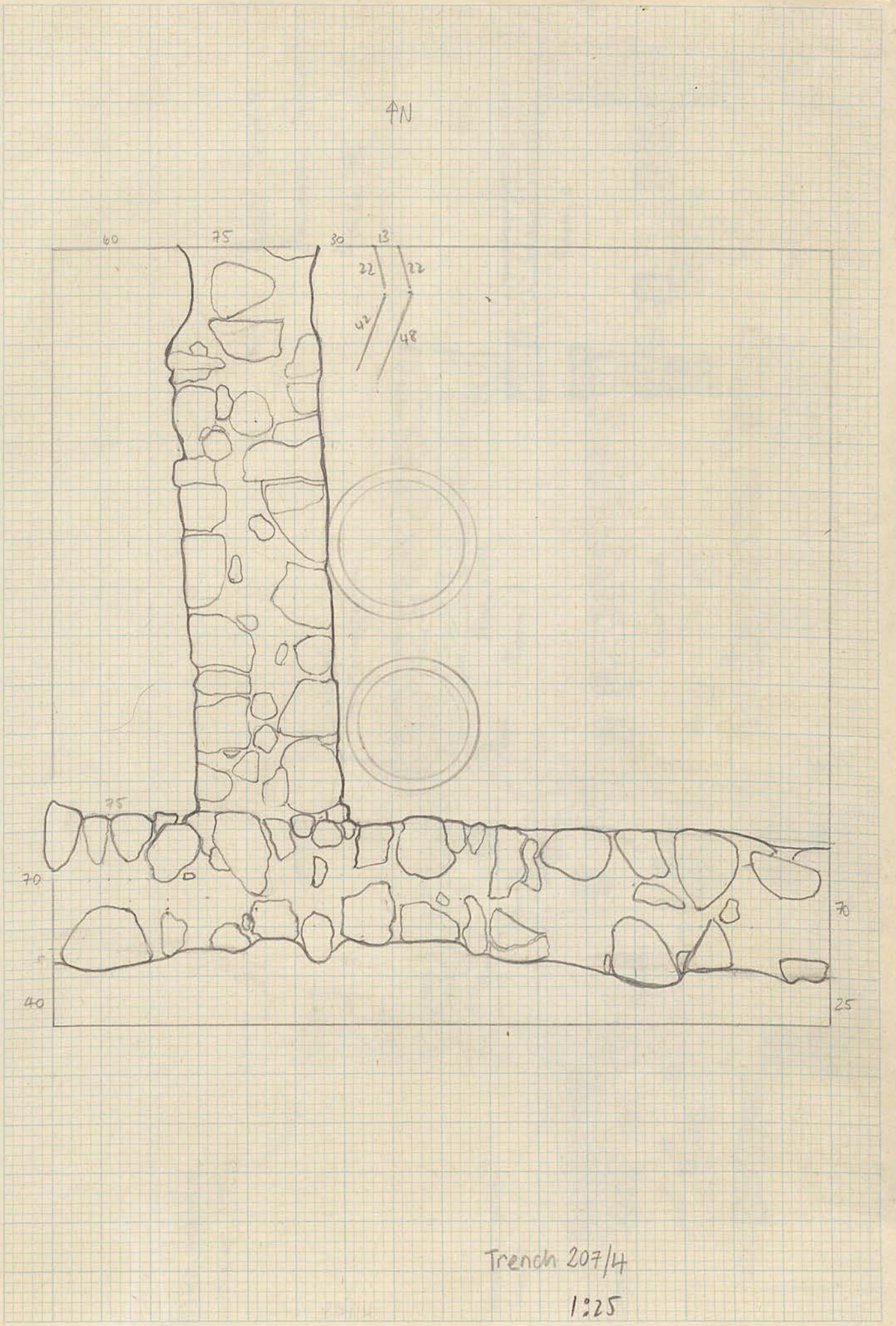


S

4N 207/5

1:25



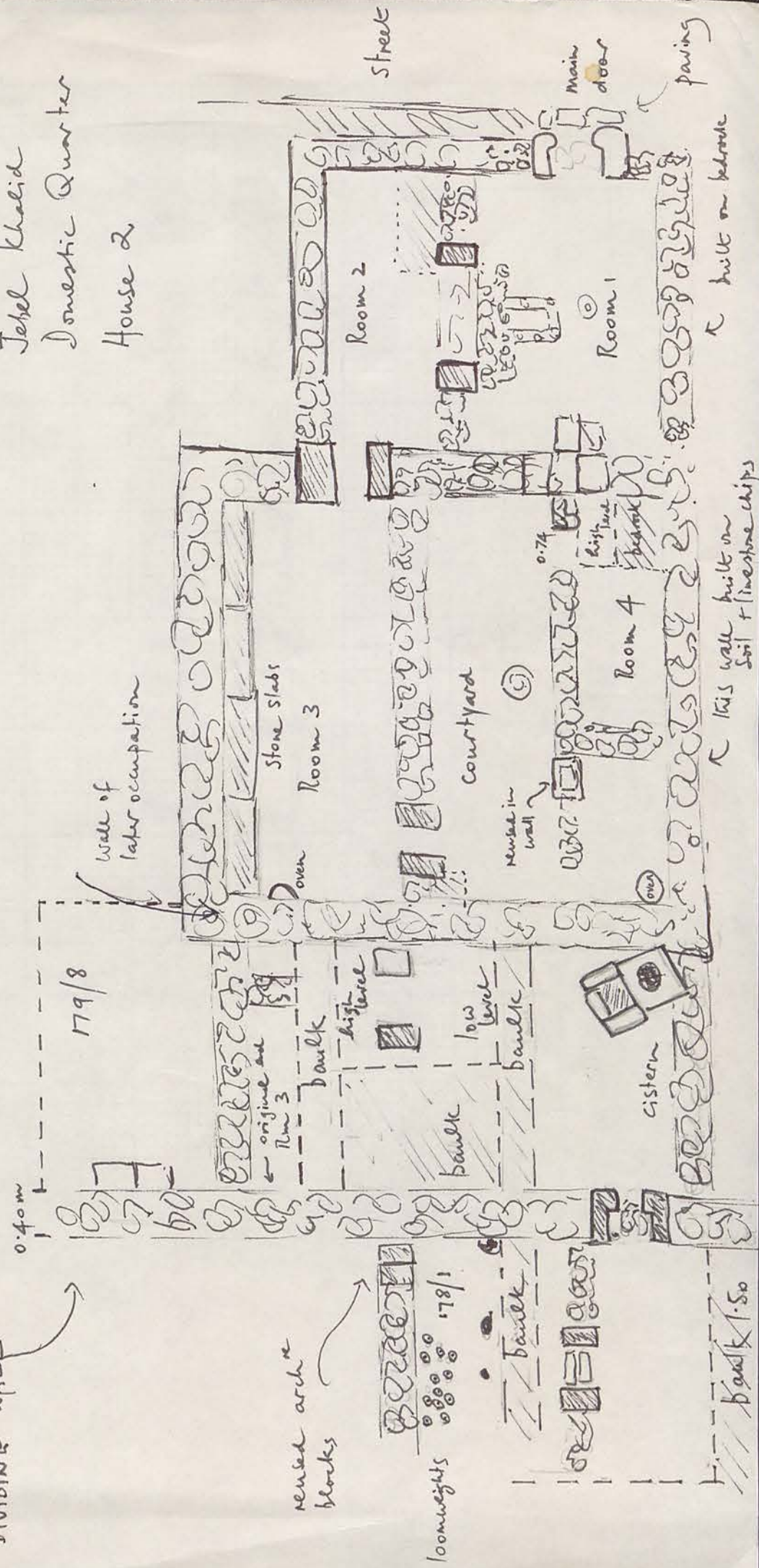


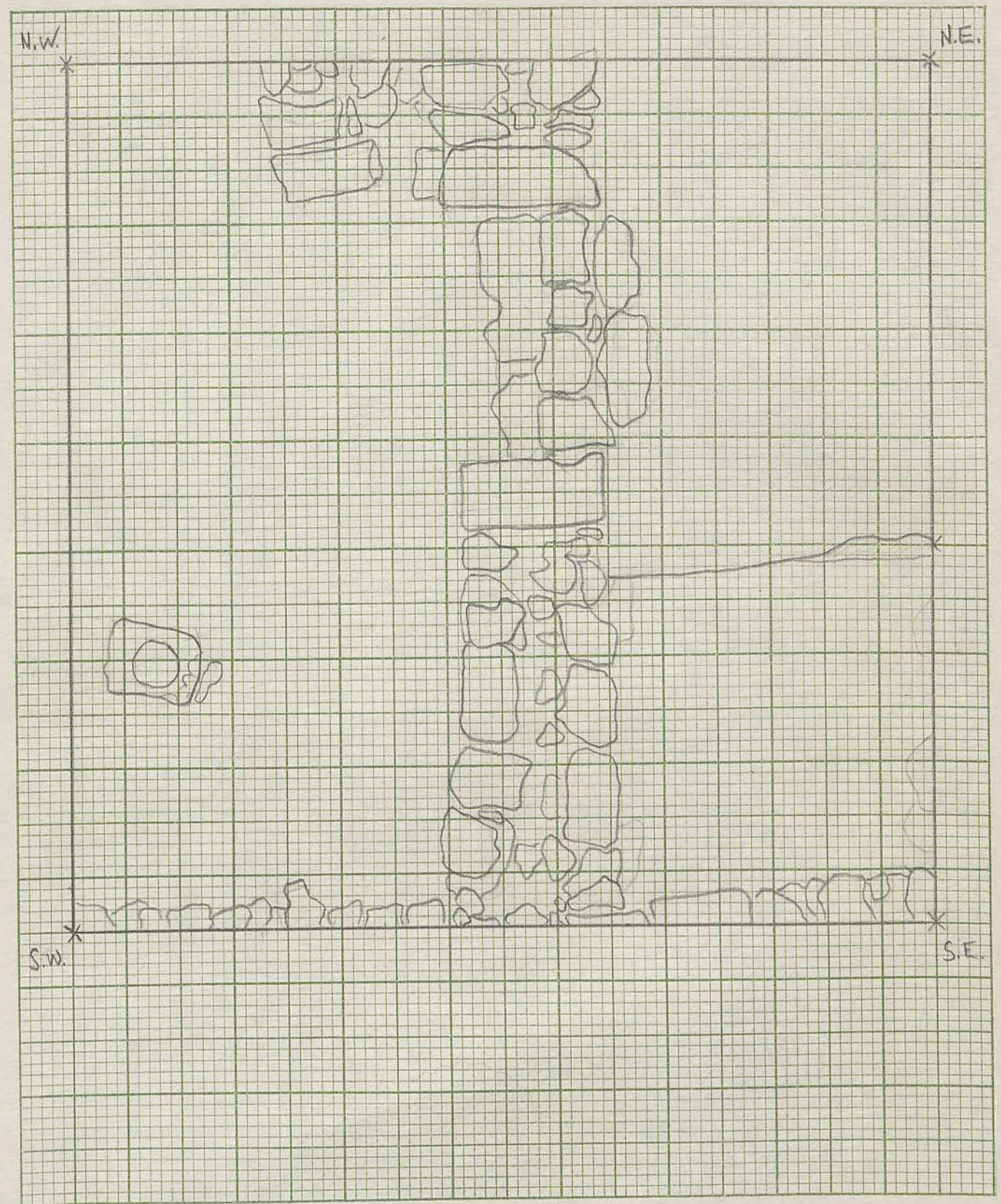
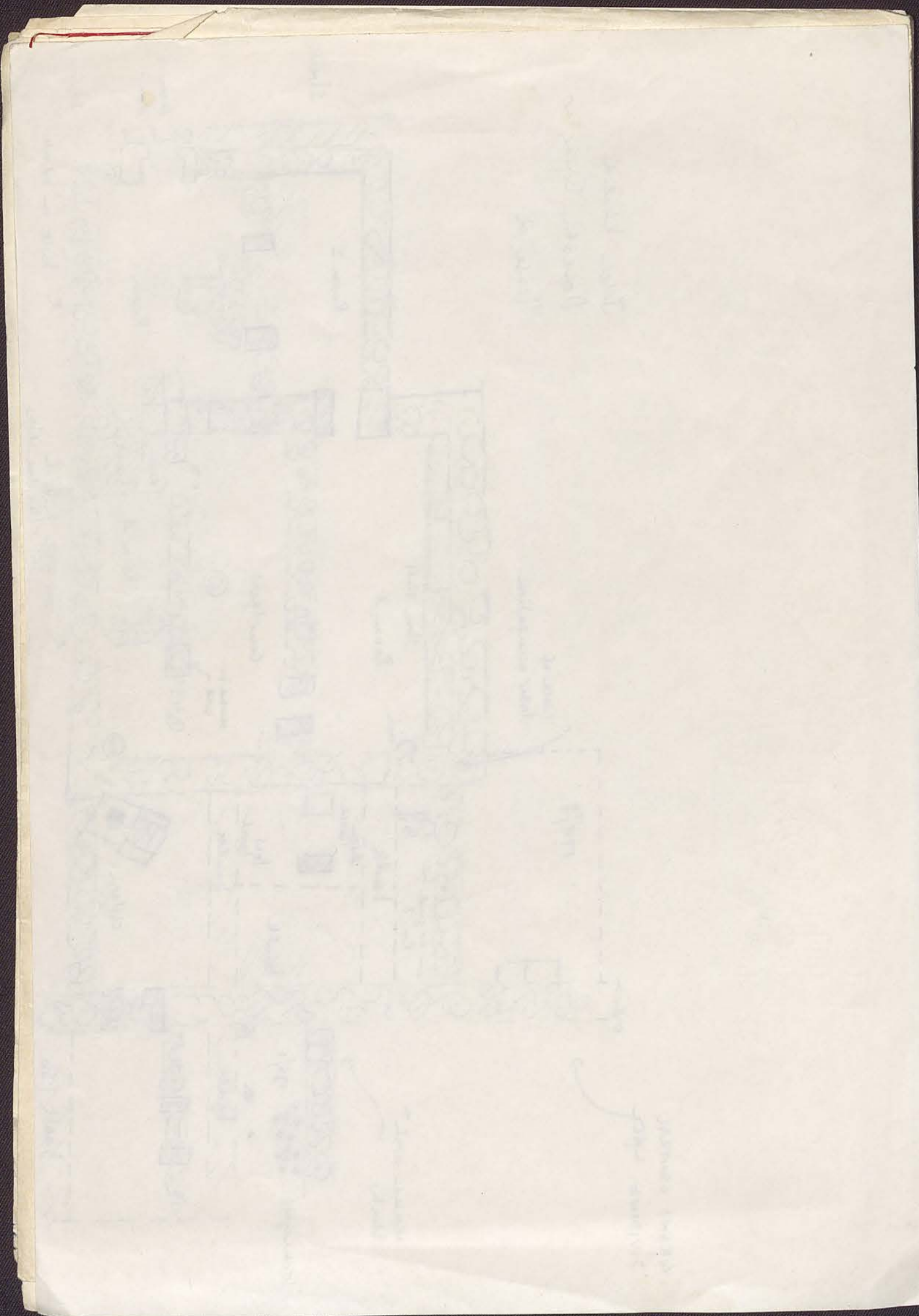
Trench 207/4
1:25

Scale 1:25

GRAND CENTRAL
DIVIDING WALL

Jebel Khalid
Domestic Quarter
House 2





207/7 1:25

"SELF PORTRAIT" (encl '90 (mm))

1990