

DOMESTIC QUARTER



A4 NOTE BOOK

No. 595

RADI UKHDI
1990

- 1. 179/8 E (Rm 2)
- 2. 208/9
- 3. 207/3
- 4. 178/1
- 5. 179/8



9 312828 005954

22-4-1990-

1- casa Ahmad - 2 Ammitaha - 3. Crayni hmedi

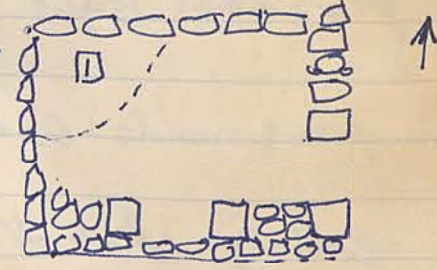
23-4-1990-

1- casa Ahmad 2- Ammitaha - 3. Crayni hmedi. 4- Gassifh
5- Edi Ahmad. Yafih

① Room N.o. 3 - = 179/4² 208/6 179/8 East = Area 3

Today we continue the work on this room N.o. 3 which was opened last year.

and it has a lot of stone and a soft soil. Also it has a lot of pottery



= 179/8 NE etc.

~~ROOM NO. 3~~ = 208/6

24-4-1990 -

Room - N.o. 3

g was away, and the workmen continue the work on the Room N.o. 3. and as KB has observed


Check KB's book - tannur found? (no mention)

See PJC's notes in KF book.

23-4-990

Room No 3

6-fragments Rim Baday shreds

1-echinus bowl, rim fragment, coarse ware → 

2 fragments handle Baday shreds

1 fragment handle and rim

5- fragments Base Baday shreds

14-fragments Cooking Bowl


Baday shreds

24-4-990 Room No 3

1- Base fragment Green glazed bowl

1- Base fragment Baday shreds

7- Rim with a handle

3- Rims Baday shreds → 

1- Rim flaring of bowl

8- fragments cooking Bowl

29-4-990 Zakeih 29-4-990
1- salam - 2- case 3 Yosef - 4 each - 5- A meeni - 6- H Reemi

□ Δ poace from figarreen. 20-8/9

today we start dig on this square which lay on the west of the house, and very little pottery it has.

208/9
= Cistern courtyard.

invest H - 2 - in area A - 7 - 2004 H - 2004 E - 2004 - 1
20-8-19

today we start dig on this square which is
the west of the road, and very little pottery was

208/9
Canton Courtland

30-4-990

Room N.03. (6-workmen.)
= 179/8 East

Today we take out the stone fallen on the N.W. on
the square.

Room--3 [2] a piece from B bronze link rail?

208/9
today we continue the work on this square. which
seemed the surface very stony. and it is in this
middle of it a pier (a well) and it a lot
stone fallen around a well.

[5] it is a square in part of the wall of the
well.

6 workmen.

1-5-990

20819

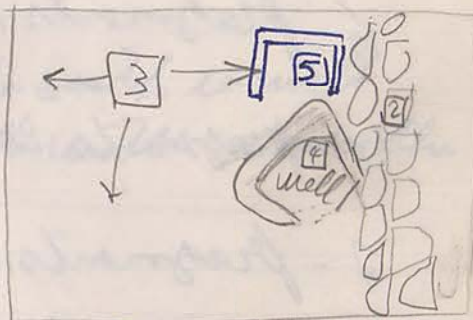
[2] it is a wall stone coming from the south to north.

[3] This Locus Lay on the West of Locus N. 2 [2] and it has a lot of stone fallen.

[4] This Locus consist of from. well and it is a tache locus N. 2

[3] (3) piece from B side it is found covered south the well.

[5] it is Basin Lay on front of the well of from the north.



1-5-990
208/9- [3]

4- fragments ^{rim} echinus covers

1- fragment rim fish plate

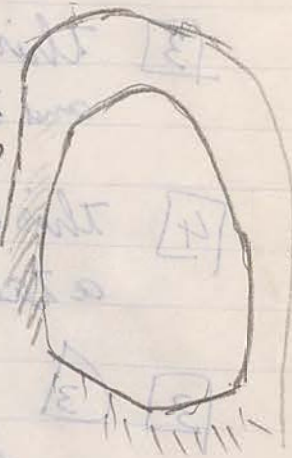
1- fragment handle with rim and neck

6- fragments rim Baday sherds

13- fragments Bas Baday sherds

7- fragments Baday sherds Looking Bowl

2- fragments Baday sherds Red glaze



2-5-990

6- workmen

208-9

[5] Today we continue the work on this locus which consist of from Basin and it has a lot of from pottery and some Bone. Also the floor Basin it is from plaster which covered also about 20 cm high with a starting from the Bottom.

The Basin is open from the south to well with small window - to give the water into the well.

[3] Also we continue the work on this locus which ~~was~~ covered ~~at~~ around the Basin and the well it has some pottery and some Bone.

2-5-99

20819

[3]

1- rim complete with handle

1- rim Baday shards a chimus bowl fragment, coarse ware

6- fragments rims Baday shards

1- fragment rim with handle

1- fragment base ten

3- fragment base Baday shards

1- fragment Baday shard red glaze rouletting

20819

[5]

1- rim mortarium fragment

1- rim fragment echinus plate

3- rim fragments rim Baday shards

2 rim fragment of bowl

1- fragment handle (dabell)

1- fragment handle (complete)

2- fragment handle Baday shards

19- fragments base Baday shards

1- fragment a tall

1- fragment of tannor

3- fragments cooking bowl

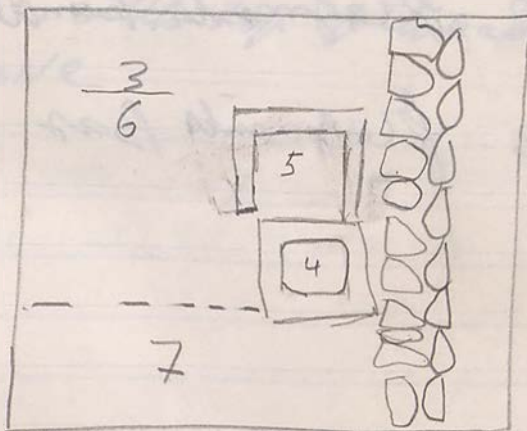
3-5-990

4-herent = yosef

5- workshop - casa - 2- karoma - 3- yakia - 4- Amena - 5- salem

[6] This locus appeared beneath locus N.0 3 and it is consist of from the floor plaster and it is thick about 12 cm

[7] This locus lay beneath locus N.0 6 and it is consist of from B. Bappally and deposited from bones and pottery - Bone - - - it has some bones



3-5-990 20819 [7]

1- fragment flaring rim [2]

1- fragment rim of Chinese coins

1- fragment Rim Baduy shields [4]

2- fragments handle a black couler

3- fragments Bas Baduy shields

5-5-99- 6-workmen
6-5-990

1- Zafere Amossa - 3- ease - 4. salem - 5. Amenele Carami
20-819

Ceremon itself

[4] If today we are starting dig in sid this locus which consist of frame the well - and the first time of task
depth 5m
width inside 3m. the stone fallen as the led from top and it depth 5 meter - and a lot of a stone fallen in sid it. it 3 meter diameter in sid

[4] it a make from wood. on the top of the Rahor - a lot it has some BONE.

6-5-990

20819 [4] Well

1-fragment loom whieat

1-fragment handel

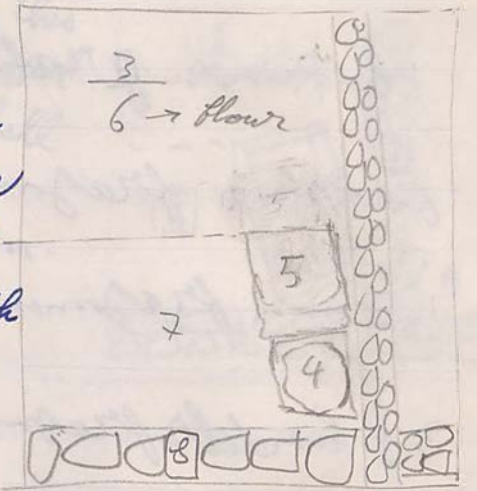
primary

7-5-990

6-wolfmen

20819

[8] This locus consist of a stone
 wall coming from E to W
 and the thing this is a wall it's
 a first a cupration and it's attached
 the well from the south
 and it is ten pesis from
 a piroge fragments?



it is also the part of the top wall covered by baulk.
 and we take out the baulk which lay on the south
 square.

Constructions that...
 we get the badrach on the south of this...
 it's deposited from...
 which it is a floor level...
 observations...
 this the ground...
 construction...
 which includes...

7-5-990

20819

8

18- Rims fragments Badgersherds

6- Rims fragments & chinos courts mawr

1- Rim fragment Red glaze

3- handles fragments Badgersherds

2 handles fragments Imime

17- Bases fragments Badgersherds

1- fragment a tiall

12 fragments with impressed ribs

5 fragments red glaze

2- fragment cooking Bowl

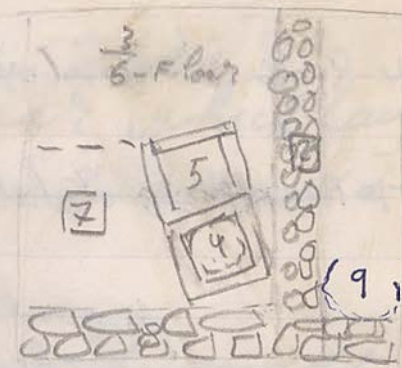


8-5-990

6- workers

20819

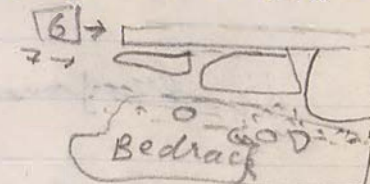
[7] Today we continue the work on this Locas it is Beneath the flour level Locas N. 0 [6] and it is seemed a full from iron and pottery and lime Also the color of soil is Brown and soft



[8] [4] it is Boad Stone

[8] Also the Locas N. [8] it coming from E to W it is the first Occupation it is 20 cm depth the second Occupation

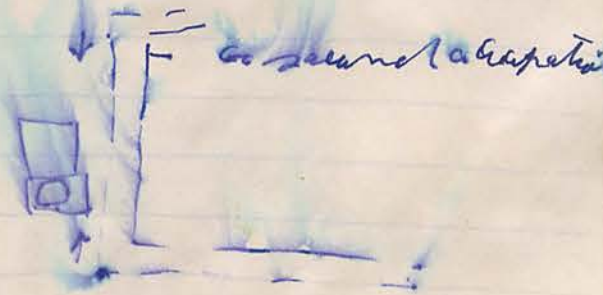
[9] this Locas consist of from Tannor and it is diameter 450 cm and it is Beneath it 20 cm a flour level first a Occupation and we noticed it is Locas N. 0 [6] The depth of Tannor is 10 cm



-(m d r) 30 -

Constructions the Locas N. 0 7 we got the Bedrack on the south of this Locas and it is deposited from a bedrack and until the top Locas N. 0 [6] which it is a flour level a first Occupation

Observations: A hot Building it is the second Occupation had been when the generation of this sell the part of the wall which including the well located in the West



8-5-90

208⁹-7

4-Rim fragment of flaring



1-Rim fragment shallow on red color out side and gused



4-Rims echinus plat

1-rim shallow plat and glaze a black color

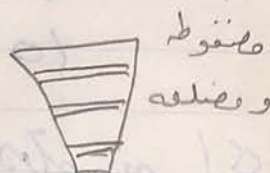
4-rims fragment Baday sherd

5 - Bases fragment Baday sherd

3- Bases fragment has pinto a black color

2- Bases fragments a Ten

3- fragments with impressed ribs



7- fragments a handels Baday sherd

1- fragment figure on a had a enamel?

[Faint blue ink notes and scribbles]



9-5-990

20 6-workmen

207/3

1 Today we a find the Neoa square which lay on the West square 208-19- and it seemed a lot of stone

1 5 it Cain Bronze found on the middle of square.

2 Also we start dig up the house etc find wall which was a brick this wall the house it is a house and the main wall which coming from E-W on the middle of the house



207/3-

[Faint blue ink notes and scribbles]

10-5-990

6-Workmen

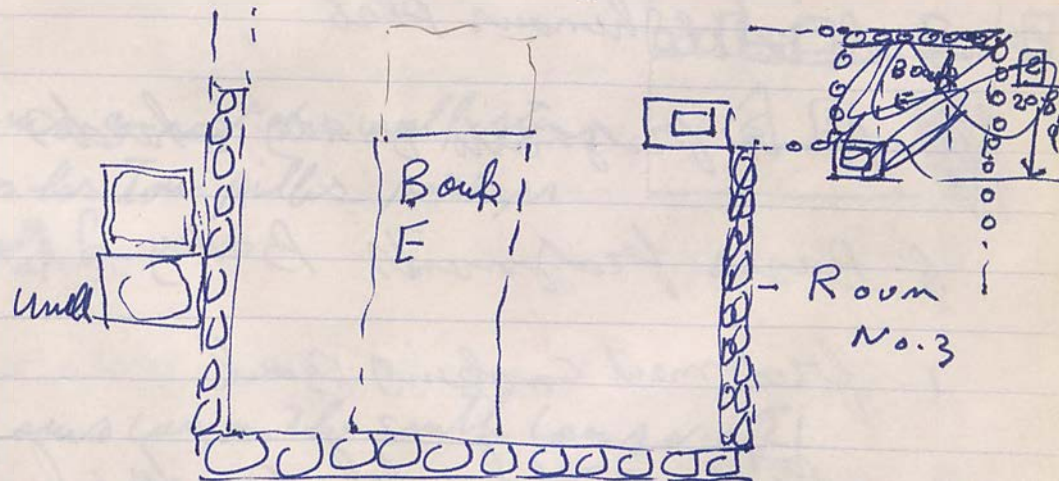
208/9 - 208/6

Boulevard E

today we start digging on this Boulevard which lay at the E side the locus N.02 wall second period.

we like to know what relationship between the Room N.04 and the wall locus N.2 in the S Mar 208/9.

[2] Also we start dig up this locus to find out what are aligned this wall. Then find it is a line until the main wall which comes from E-W. on the model of the house.



207/3-

As soon as ~~soon~~ today we continue clearing to the top of this square and a lot of stone has a present.

10-5-990

20819

E Boulk

1- vic with a base handle and rim of a cherted ^{on} ~~sherd~~

2- fragments rim Baday sherd

1- fragment a tiall

2- fragment rims a chertous ware

1- fragment a handle

10-5-990

20819

E Boulk

second Bag

fragments

3- Rims chertous plate

9- Rims fragments Baday sherd

6- Bases fragments Baday sherd

1- fragment cooking Bowl

1- fragment handle Baday sherd

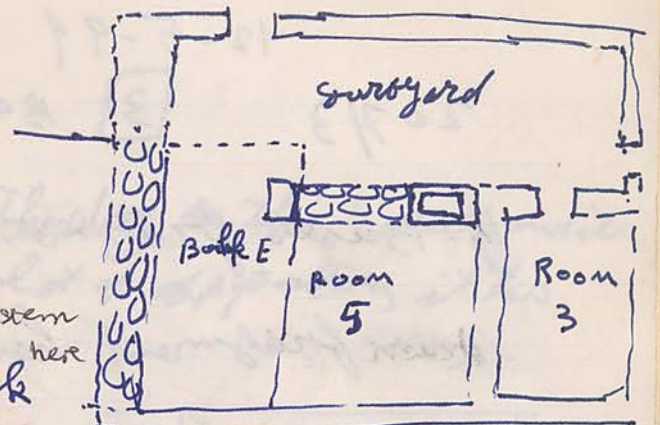
1- fragment handle with rim

12-5-990

6- workmen

20819

E Boulk:

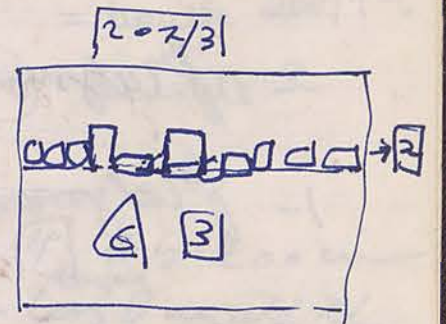


Today we continued the work on this Bouk which lay E Locs No 2 so I hope took out it and I got a new room on the court also this room is a second a Cupation they built it after depots the court yard and they sicken the well.

Also we can say clearly they are belted to room (it is Room No. 4 and 5)

207:3

2 This Locs consist of a wall stones and it is has two pillar perhaps a door way?



3 This Locs lay on the south Locs No 2

3 6 coin bronze.

12-5-99

2073 [3] Bag I ✓

5- Bases fragments Baday sherds

2- fragment handel Baday sherds

207-3 [3] Bag 2 ✓

1- fragment rim with handel and neck

2- fragments rims Baday sherds

3- fragments Bases Baday sherds

2- fragments handel Baday sherds

1- fragment Base atou

12-5-99-

E Baulk

1- fragment Rim echonou covers me

1- fragment rim Baday sherds

3- fragments Bases handel sherds

1- fragment Base glaze red color

1- fragment Bas atou

2- fragments handel Baday sherds

1- fragment glaze Baday sherds

13-5-990

6- work men

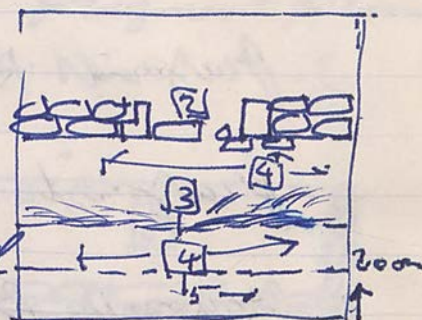
207-3-

[3] Today we continue the dig on this locus and it appeared most soft and a lot of apparatus it has

[3] [7] Basalt stone.

[3] [8] Drain pipe of the ^{roof}

[4] This locus consist of a floor level it's a plaster floor covered All the space from the south locus [2]



Room N.05 [9] Jools bronze

= bank 208/9-6 separate.

[5] This locus lay beneath locus no [4] it is 200 cm width. Also it consist of a stone ^{layer} beneath the floor level. stone layer beneath floor level.

[5] [10] spindle ~~wood~~ me

13-5-990

207/3

3

5- fragments Rims e Chinos courses ware

4- fragments Rims flaring Badeg sherds }

3- fragments Rims Badeg sherds

3- fragments Bases red glaze

3- fragments Bases Badeg sherds

2- fragments handles Badeg sherds

3- fragments red glaze Badeg sherds



14-5-990

6- workers

207-3

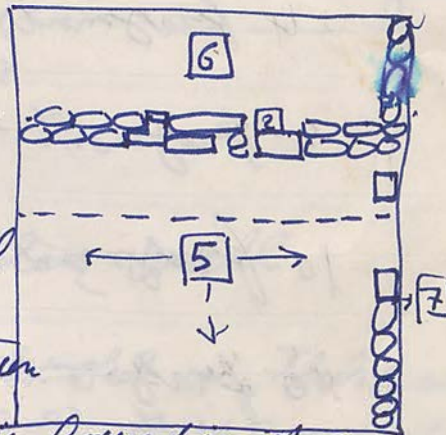
5

Today we continue the work on this locus and go down more it was a lot of a stone and I have take out it and beneath it a soft soil and a lot of pottery and it fragment from plaster wall it is red color.

6

Area 26.

This locus lay north wall stone which locus NO 2 it is a lot stone and pottery and Bappally. Also there are on the middle two big stone & they are stand up like a door way but between them are (shating) and it has found in it some classes glass?



7

This locus consist of a stone wall coming from the south to the north. and it has probably a door way?

14-5-990

207/3 [6]

1-fragment Rim Baday sherd

1-fragment Base Baday sherd

207-3 [6]

9 fragments bands Baday sherd

4 fragments rims echinus courses were

2-fragment rims shallow courses were

10-fragments Rims Baday sherd

10 fragments Bases Baday sherd

2-fragment Bases toe

1-fragment Bas ungentarium

1-fragment Rim green glaze Baday sherd

1-fragment Baday sherd gilded

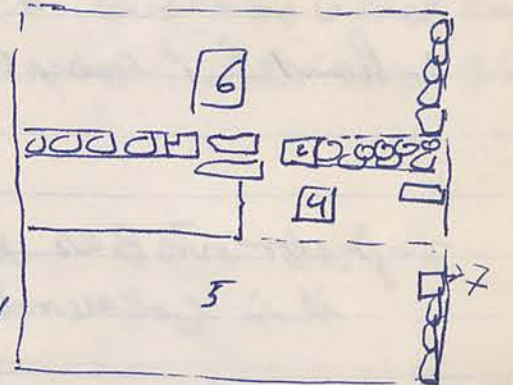
1-fragment Baday sherd green glaze

15-5-99

if weather - 1- Zfoor - 2- A meeni - 3- Zbeai - 4- Mourra - 5- salam -
go to work ← (6- Fissa) 2- K. Raime -

207-3 [4]

today we continue the work on this locus which I said a lot it is a blow layer and it is perhaps it not blow it is could be a soil pavement



[4] a piece from Bronze

[4] fragments from plaster wall

[6] Also we continue the work on this locus which lay on north locus N. 2 it is consist of from soil and a lot stones poulten and a lot pottery. Also it a ^{ashy} soil has appeared

[4] (11) a piece from iron flat flat iron?

[4] Bone

15-5-990 207 [6]

1- Rim Baday sherds

1- handel (complet) with neck Baday sherds

2- fragments Bas without foot
its surrounding



1- fragment Bas Baday sherds

3-4- fragments Baday sherd cooking Bowl

1- fragment metal slag

[6] Bag N.0 2

4 fragments handels Baday sherds

4 fragments Rims Baday sherds

10- fragments Baday sherds cooking Bowl

20713

[4]

= 15/5/90

1- rim fragment fish plate

2- rims fragments a yellow plate

3 rims fragments Baday sherds

5- Bases fragments Baday sherds

1- fragment handel Baday sherds

1- fragment Baday sherd has decorat



1- fragment " " red glass

1- fragment " " green glaze

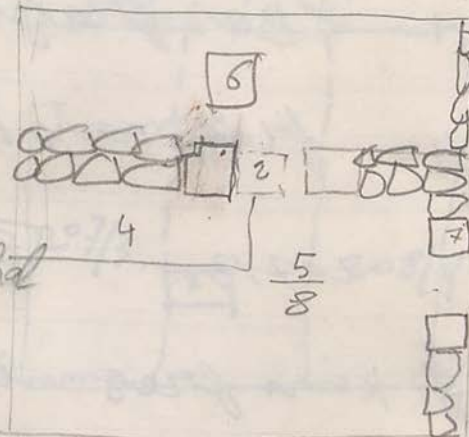
16-5-990

6- workmen (Zakeri - 2- selim - 3- menci - 4- Marsa - 5- P. come - 1)

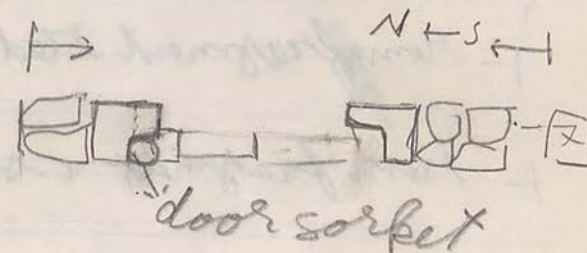
20713

[5] no content on the work on this locus which lay on the north square - it seemed a cihay grey color

[2] This locus lay beneath locus N[5] and it seemed a cihay grey color - and it is perhaps a flour lapid bowls the seam lapul with trachid and it has a lot of Bone



[7] This locus stone wall it is S-N 1st it has doorway with door socket



16/5-990 207/13 [6]

1- Bas it's complet Also it has and diameter is 19cm

207/13 [6] Second Bas

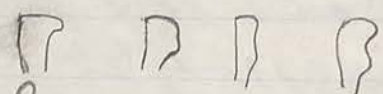
2 Rims fragments flaring Bowl

1- Bas fragment

11- fragments Baday sherd's cooking Bowl

207/13 [8] ✓

7- Rims fragments Baday sherd's



1- rim fragment red glaze of maratorium

1- rim fragment a shallow dish

8- Bases fragments of Baday sherd's

1- Bas fragment a black glaze

2- Bases fragments of tea

1- fragment rim with a handel

4- fragment handel of Baday sherd's

4- fragments red glaze Baday sherd's

1- fragment green glaze a

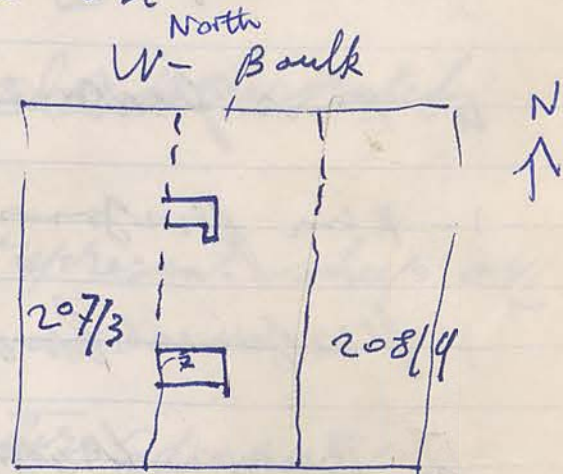
1- fragment a tall roof

17-5-990

6 workmen / Zafar - Salem - Massa - 4 - 4 men - 5 - 2 - 2 - 2

208/9 West Bank -

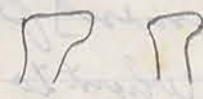

today we start dig on this bank which lay on the west 208/9 - it width 100cm coming from the south to north & want to see the other side of door way.



21-5-990

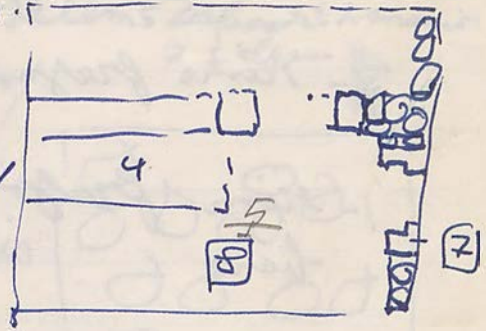
207/3


8

- 8- Rims fragments echanous covrs Ware
- 7- Rims fragments Baday shards
- 5- Rims fragments flaring 
- 4- Rims fragments a sahallon Plat
- 1- Rim fragment with a handle Baday shards
- 1- fragment handle.
- 5- Bases fragments of Baday shards
- 1- Base fragment stamp 
- 1- fragment red glaze Baday shards
- 1- fragment green glaze ✓
- 1- fragment of cooking Bowl

← 21/5-990 - 7 workers, 1-salcha-2kci-kremi-Aman
 207-3 - 6-salen-7massa

8 today we continue the work on this lacous - which seemed flour level covered all the square - and it has a lot of lime and pottery



- 8 fragment of Baday shards decorated
- 8 fragment of lamp represent sheep or goat?  voluted handle.
- 8 fragment of mold patterns (decorated)

17-5-990 20819 West Bouff

7- rims fragments echanas courtwar (())

1- rim fragment with nick and it decorated with
lines



3- rims fragments a shallow plat

9- rims fragments Baday shards

10 Bases fragments Baday shards

2- handle fragment Baday shards

4 fragments a black glazy of Baday shards

2 fragment of Baday shard fused

1- red glazy fragment Baday shards

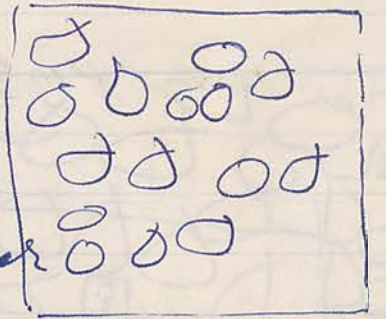
22-5-990

~~1. Zafar Amani~~
~~2. Zafar Amani~~
~~3. Sakha~~
Zakie Zmai - 2. Karame - 3. M. Saad - 4. Selem - 5. Zafar Amani
7. Selem

Zakie Zmai - 2. Karame - 3. M. Saad - 4. Selem - 5. Zafar Amani
7. Selem

20714

today we are starting dig on this
square which location northern
square 207/3 - the top of square
has appeared very strong



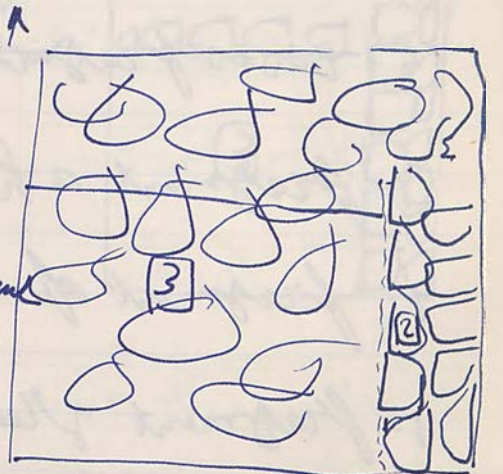
The line is very clear with the west side of the
square and the top of the square is very
clear and the bottom of the square is very
clear.

23-5-990 F-workmen

~~807/4~~ 1781I

We continue on the work on this square and it is very stony

[2] This locus consist of stone wall it is coming from south to north it is the the same locus N. of [7] in situ N. 0207/3



[3] This locus lay on the West Locus N. of [2] and perhaps covered all square. it is a lot of stone and the soil it is brown color.

No pottery collected? For 1 or 2?

23-5-990 178/I

[3]

2- Rims fragments a shallow plate

5- Bases fragments Beday sherds

1- fragment a handle

1- fragment of a lamp

1- fragment green glaze

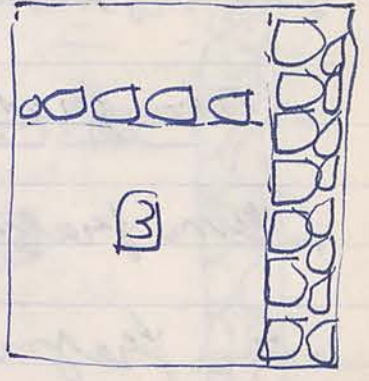
1- fragment red glaze

24-5-990

1781 I

6-Workmen (absent)

[3] We continue the work on this
Locus which consist of soil and
stones & take out the stones and
prepared the soil very soft



1781I

24-5990

[3]

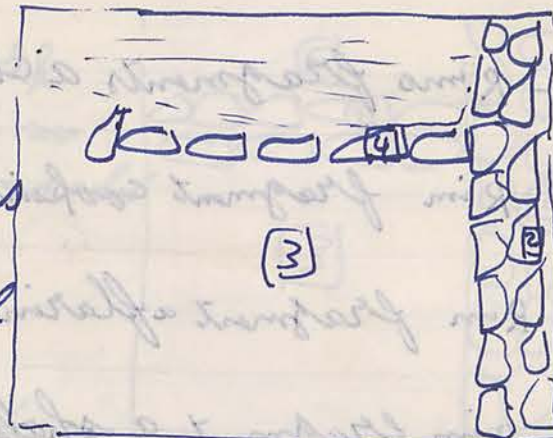
- 2- Rims ^{fragments} mortarium Baday shards P
- 1- Rim fragment echanous Cours
- 1- rim fragment green glaze of flooring P
- 1- rim fragment a black glaze of a chanous Cours
- 5- Rims fragments Baday shards
- 4 Bases fragments Baday shards
- 2- handles fragment Baday shards
- 2 fragments of Baday shards cooking Baul

26-5-990

7-workmen-

1781E

[3] Today we continue the work on this locus which lay on the West Locus No [2] it is stony



[4] This locus consist of from stone wall coming from the E to W - and its stone seem a medium stone

26-5-990
178/I [3]

- 3- Rims fragments a charous cours war
- 1- Rim fragment cooking Bowl ↗ Baday sherd
- 1- Rim fragment a flaring ↘ Baday sherd
- 1- Rim fragment a shallow
- 2- fragments Bases Baday sherd
- 1- fragment handel Baday sherd
- 1- fragment of ~~lamp~~

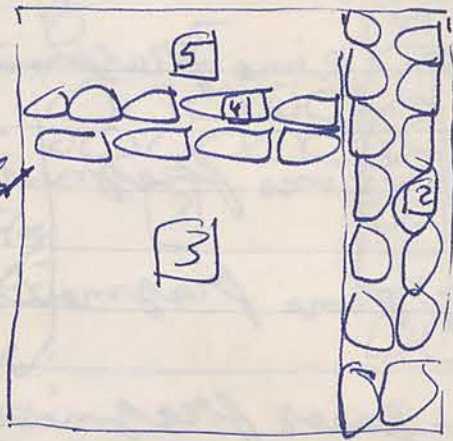
not a lamp
= fig. frag.



27-5-990
7-workmen

178/I

[3] we continue the work on this locus it look as the soil most soft and alot of shards.



[5] this locus lay on the northern of square.

[5] Δ a piece from glass it on the north of square

[5] Δ it bead from stone.


[3] Δ stone Bead it is red color

[3] Δ 3 fragments from rims it is then

[3] Δ Bas fragment Black glass of cap?

27-5-190
178/I

[3]

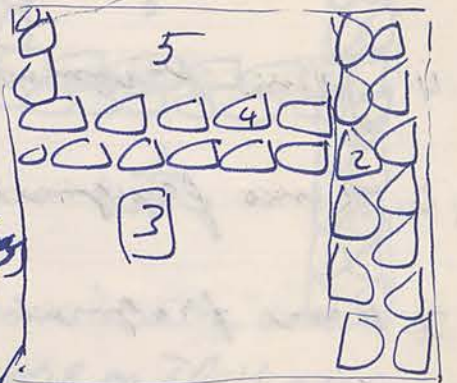
- 9 - Rims fragments Baday sherd
- 7 Rims fragments echanous cours war
- 5 Rims fragments a shallow plat
- 6 - Bases fragments Baday sherd
- 1 - Bas fragment sarol
- 1 ~~Bas fragment Black glaze a glass~~  go object
- 1 - Bas fragment Black glaze Baday sherd
- 2 - handel fragments Baday sherd
- 4 - fragments Baday sherd cooking Bowl
- 1 - fragment tail
- 1 - fragment plaster wall

28-5-190

7 workmen

178/I

[3] we continue the work on this locus and the soil seen have samed today very soft - and a lot of wool wheat has appeared.



[3] Δ Loom weight ^{where?} wood weight 30-40

[3] Δ it is a bead stone red color and it is shaped.

[5] today we continue the work on this locus and a soft soil it has

[5] Δ Stone Bead it is a black color

[5] Δ Bronze

[3] Δ Loom weight from white stone

[3] Δ coin Bronze found on the floor ^{floor [3]}

[3] it is found three rows from Loom weight tabished the Loom N.0 [4] and Mr Peter have taken some photos.

[3] Δ Base with stamp

28-5-990

17817

3

4 Rims fragments a shallow plate

2 Rims fragment echanous courses

2 Rims fragments Baday shards

1 handle fragment Baday shards

3 Bases fragments Baday shards

1 Bas fragment toe Baday shards

1 Bas fragment Circoul of Baday shards

4 fragments of cooking Bowl Baday shards

1 fragment shard at all

58-5-990

7 workmen

I/241

29-5-990

17817

7 workmen

3 Today we continue the work on this locus which gives soft soil and Brown dust

3 Δ it is Bronze wire Nail

5 Today we also continue the work on this locus and it has shards/pottery and stone

5 Δ it is fragment from Bronze found on the East of square it could be for lock door?

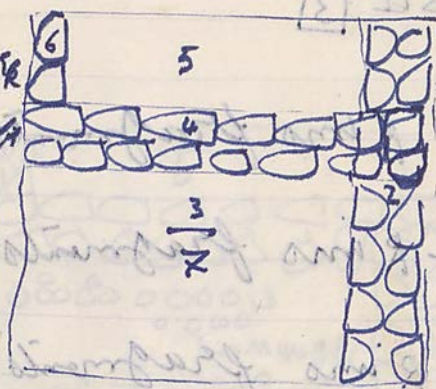
6 This locus is on N.W. of square it is stone wall coming from the North to South

5 Δ po fragment from pottery has hand and finger 90.485

* 5 Δ it is amphora handle it has inscription

5 Δ it is nail Bronze it is long 10 cm?

7 This locus consist of stone wall it is basement something of stone and it is large on it loom weight



178II [3] 29-5-990

10 Rims fragments of Beclay sherd

4 - Rims fragments a shallow plate

3- Rims fragments echanon cours war

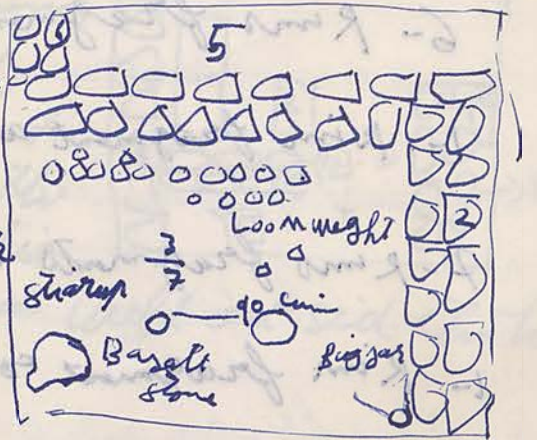
5 handel fragments a beclay sherd

9. Bases fragments of beclay sherd

30-5-990 7 wollebmen

178II

[7] This locus consist of stone floor level it is covered from the north by loom weight with three row. Also it is lay on ~~corner~~ E-S general big jar



[7] Δ 51 loom weight it covered the north square.

[7] Δ it is big jar lay on corner E-S it is broken

[7] Δ it is basalt stone lay on corner W-S of square

[8] This Locus consist of from low hole stone standing the Eastern standing most Bejest from the Western.

3015-990

178/I

[7]

6- Rims fragments a leaday shards

1- Rim fragment a black glaze of plat

7- Rims fragments echenous of coars ware.

1- Rim fragment cooking Bowl

3- Rims fragments a yellow plat

5- Bases fragments a leaday shards

1- Base fragment of toe Baday shards

1- fragment of Roof Tail

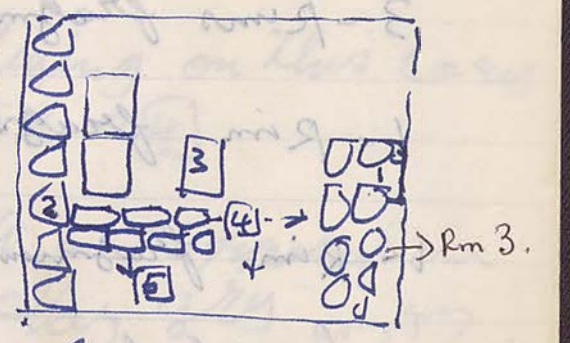
2- fragments of cooking Bowl

316-990

17918

[7] - workmen

[1] This locus consist of a wall
 stone a leaday it is coming
 from the south to north
 also this the wall second
 aquaration it is partition the
 first yard first aquaration
 into two part to make area well out side the house



[2] This locus consist of a stone wall coming from
 the south to north a leaday it is the ^{west} E-st wall
 on the squar 178/I - =

[3] the locus lay between two walls a ~~what~~
 what to know the first aquaration.

[4] This locus consist of from the floor level
 it covered all the squar. also it has some plaster
 sloping from the north to south

[5] This locus consist of stone wall also this
 is a wall first aquaration to first house

= primary wall?
 later: only base primary-
 upper structure sec.

17918

2.6.90

[3]

3 - Rims fragments echanous coars ware

1 - Rim fragment flaring

1 - Rim fragment a baday shards

3 - handel fragments Baday shards

1 - Base fragment Baday shards

1 - Base fragment green glaze

17918

3.6.990

[3]

3 - Rims fragments Baday shards

3 - Rims fragments of flaring Bowl

1 - Rim fragment a hallou of Bowl it red color

2 - Rims fragments a hallou of Bowl cooking

3 - Rims fragments a hallou Bowl

3 - Rims fragments echanous coars ware

2 - Rims fragments a fish Plat

16 - Bases fragments of Baday shards

2 - Bases fragments of toe Baday shards

1 - handel of amphora jar

3 - fragments a ball

2 - fragments red glaze Baday shards

2 - fragments a black glaze Baday shards

1 - fragment Trip



4.6.990

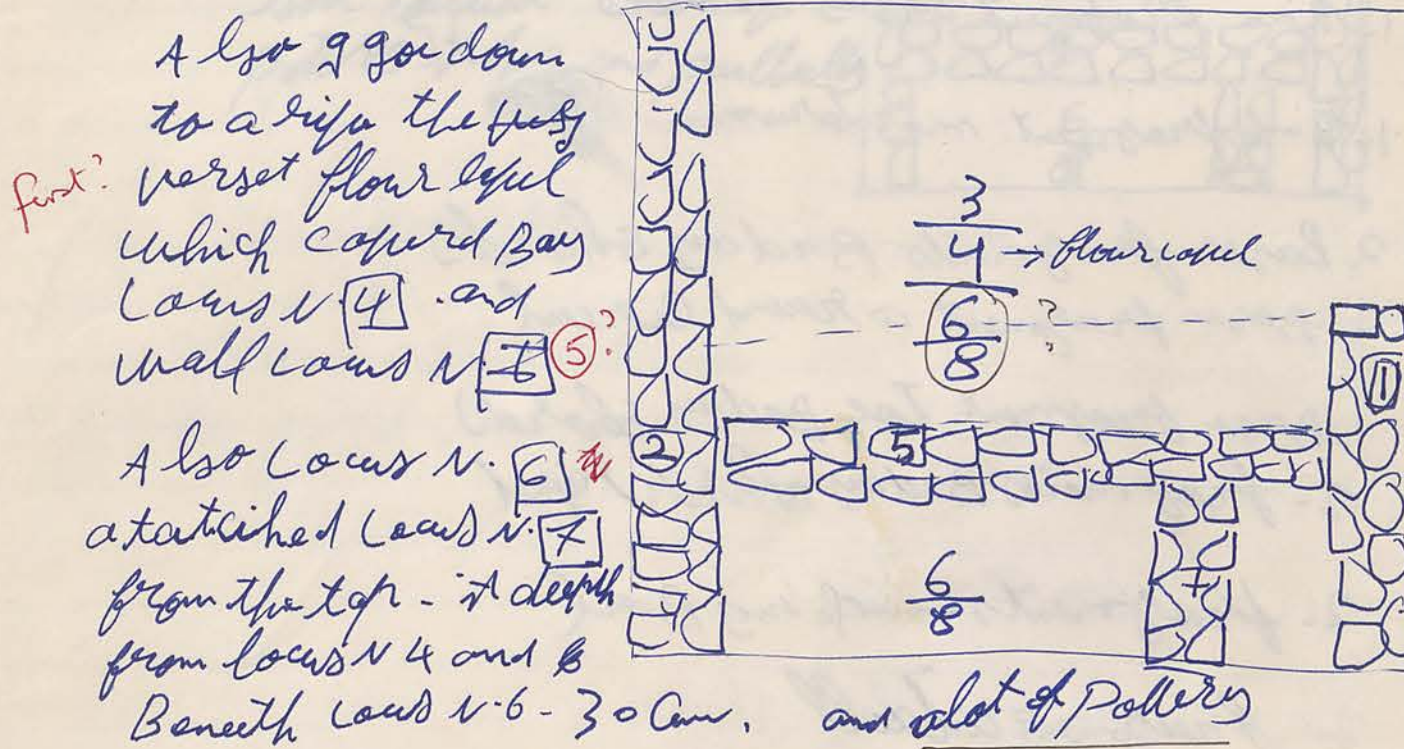
7 - workmen

17918

[6]

[6] today we are starting digging on this locus which lay beneath locus N. 4

Also this the soil it is soft and appeared on the west of square are a clay grey



[7] this locus consist of a stone well coming from north to south it attached. Also we thinking it belong to muros which lay on the W Room N. 03

[8] this locus lay beneath locus N. 6 it starting from the top of locus N. 7 and it is still go down and a lot of bone it has

Did [8] reach a floor? in South? Was it level with [3] in 17917?

See 1995 clean-up? No, work there only in North (Area 14)

JK 4.6.90

179/8

6

Where are these bags?

81151

- 1- Rim fragment echanou a black couler
- 1- Rim fragment echanou a red couler
- 6- Rims fragment echanou cours ware
- 6- Rims fragments a flat plate
- 1- Rim fragment cooking Beal Baday shards
- 1- Rim fragment Baday shards
- 1- Rim fragment mardarum
- 2 Bases fragments Baday shards
- 2 Bases fragment a round circular
- 1- Base fragment Top Baday shards
- 2- fragments Baday shards riped
- 2- fragments cooking Beal
- 2- fragment a tail

4-6-90

179/8

8

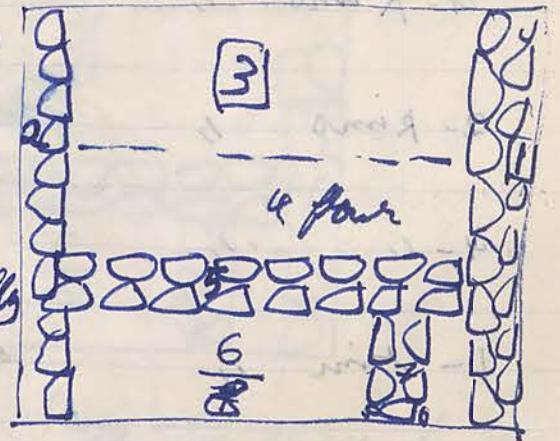
- 6- Rims fragments echanou cours ware
- 1- Rim fragment with a handle
- 3- Rims fragments a baday shards
- 1- Rim fragment a black glaze a flat
- 1- Rim fragment a black glaze a fish plate
- 1- Rim fragment cooking Beal
- 1- Base circular a round
- 6- Bases fragments a baday shards
- 3- of handles fragments Baday shards
- 2- fragments cooking Beal Baday shards
- 1- fragment a tail

5-6-9-90

7- workmen

17918

[3] Today we continue the work on this cauld which covered all the surface it is consist of from soil trench a lot of pottery it has and partially



5-6-990
179/8 [3]

9- Rims fragments of Baday shreds

4- Rims " " flerins TP TP [E]

2- Rims " " of flat plat

4- " " of echanous covrs ware

1- rim " " of a hall plat

11- Bases fragments of Baday shreds

1- handel " " " "

5- fragments cooking Baul

1- fragment atial

1- fragment ahlak glaze

1- fragment of rind

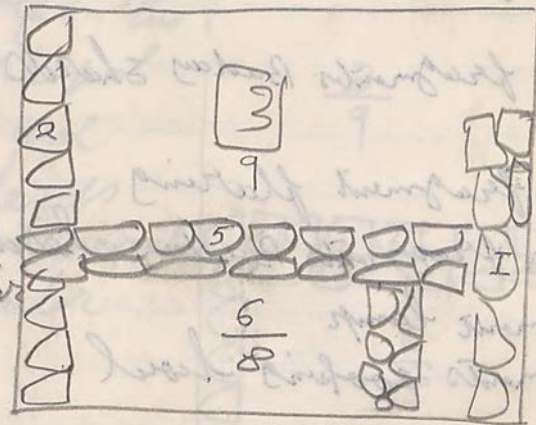
2- fragment Baday shreds with tou perallow lin

6-6-990

179/8

[3]

today we continue the work on this locus which lay on North Locus [5] also this locus it is color is brown and it has a lot of pottery



[9] This locus consist of ^{floor} floor layer it is covered all north the square it is starting from the North Locus No. [5] and it is from road

[9] Δ Base fragment

6-6-90

17918 [9] Bag 1

4- Rims fragments echonous ~~two~~ courses war

4 Rims fragments Baday shards

1- Rim fragment flaring

8- Bases fragments Baday shards

1- fragment lamp

2 fragments cooking bowl

17918 [9] Bag 3

4 Rims fragments echonous courses war

2- Rims " a flat plate

5- " " Baday shards

5 handle fragments " "

10- Bases fragments " "

1- Base fragment toe of jar

3- fragments cooking of Baday shards

17918 [9] Bag 2

8- Rims fragments Baday shards

6- " " echonous courses war

3- " " a flat plate

1- Rim fragment flaring of jar

9- Bases fragments of Baday shards

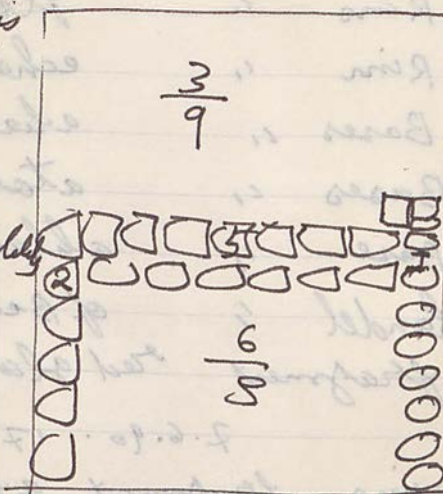
4- handle fragments Baday shards

1- fragments cooking of Bad

7-6-90

17918 7 workmen

[9] We contempon the work on this locus where the flour lapal it a pured very well and it is a lot of shards it copied this locus and paully and the soil it is cooler



[9] Δ it is iron nail

[9] Δ figorean fragment represent a woman get the milk for her child 90.587 child this in Area 16


7.6.90 179/8 [9] Bag ①

- 6- Rims fragments Baday shreds
- 2- Rims " flat plate
- 1- Rim " echanous course ware
- 7- Bases " baday shreds
- 4- Bases " atoe of
- 1- Base " a black glaze it has tea stamp inside
- 1- handle " of Baday shreds
- 1- fragment red glaze

7.6.90 179/8 [9] Bag ③


- 7- Rims fragment a flat plate
- 6- " " echanous course ware
- 6- " " baday shreds
- 13 Bases fragments baday shreds
- 1- Base fragment atoe
- 1- handle " baday shreds
- 3- fragments cooking Baul
- 1- fragment of figorean ?

7.6.90 179/8 [9] Bag 2

- 4- Rims fragments echanous course ware
- 2- " " a flat plate
- 1- Rim with Base of plate → 

4- Rims fragments Baday shreds

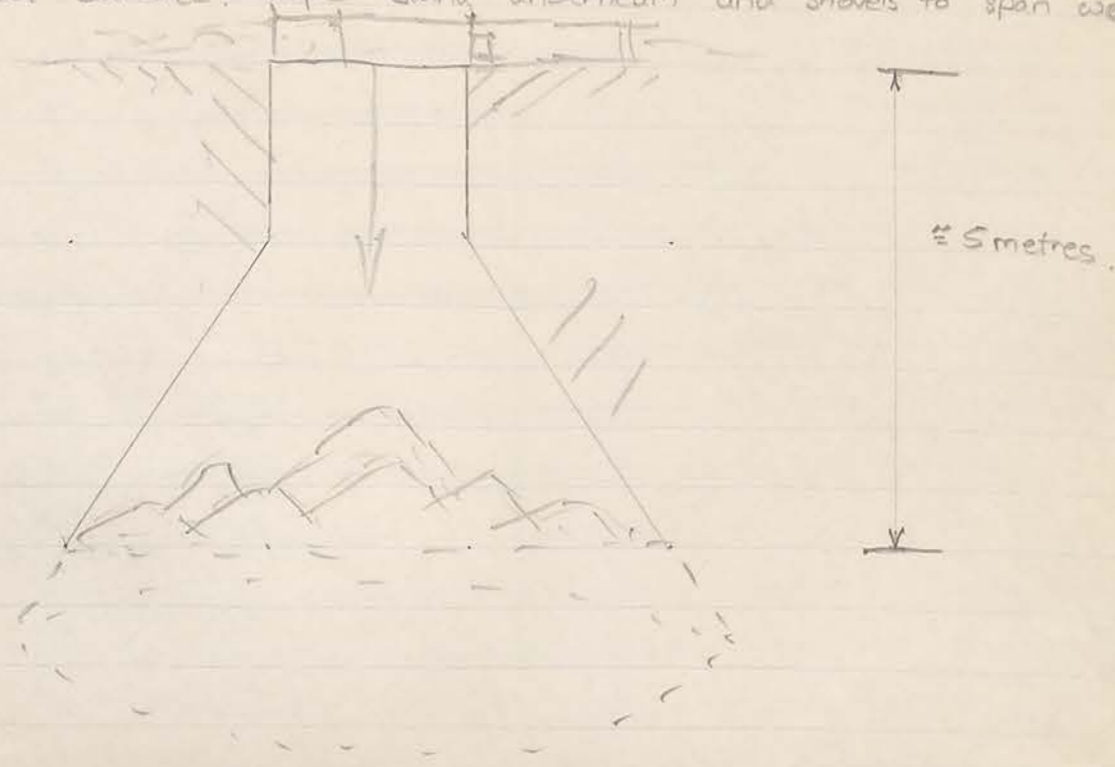
1- Rim " a flaring plate

3- Bases fragments Baday shreds 

1- handle cooking Baul

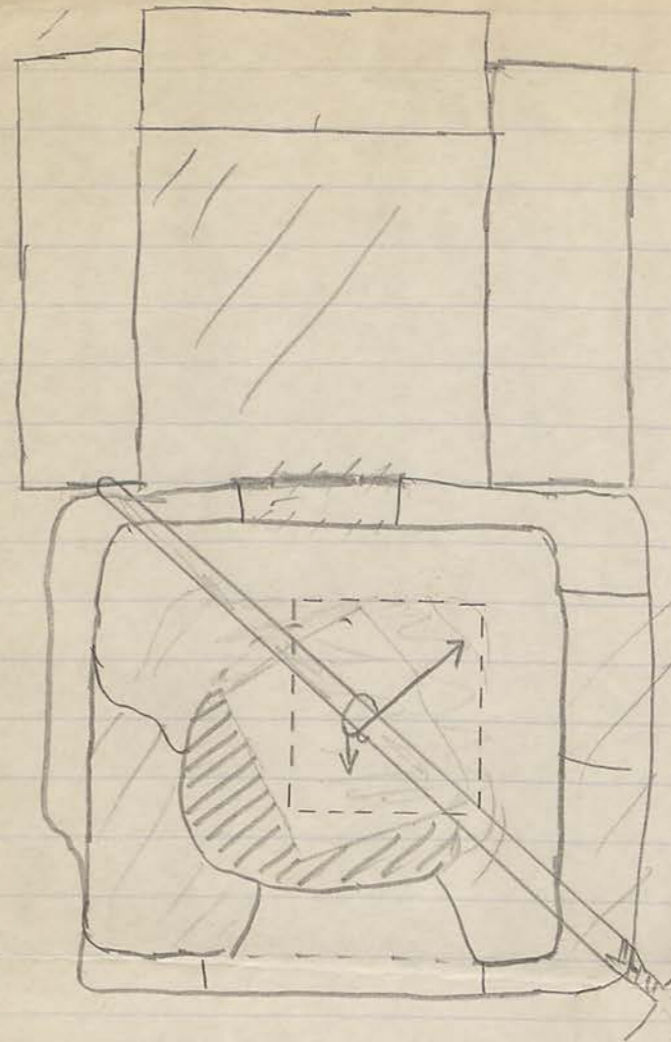
2- fragments cooking Baul of Baday shreds

Radi to be present to supervise proceedings.
 Necessary to remove (preferably out, not in) the stone block obstructing
 the well entrance. Rope slung underneath and shovels to span well?



Radi's well

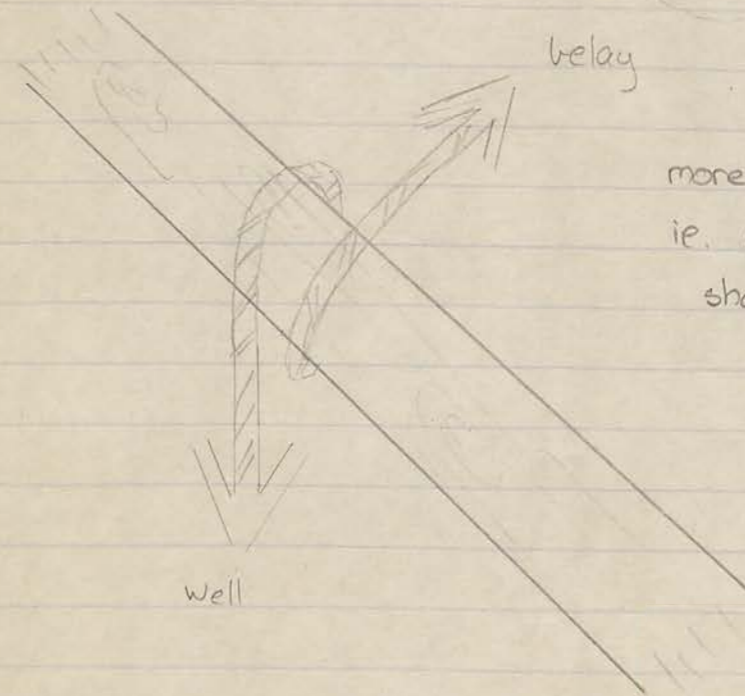
5/5/90



A small stool to precede
 intrepid adventurer.

Need: gloves, flare light, rope,
 shovel, penlight, candle, matches,
 stool, trowel, dustpan, bucket

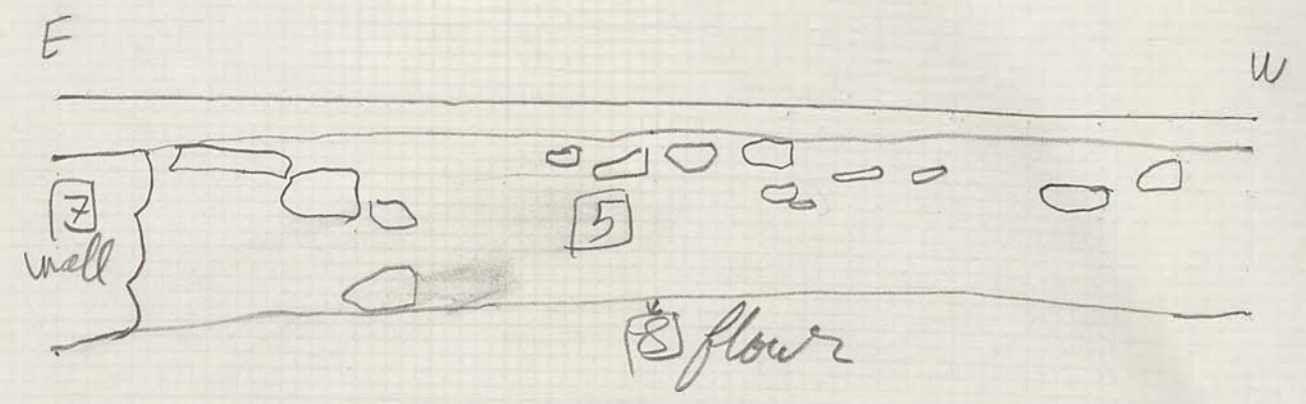
maybe two for strength



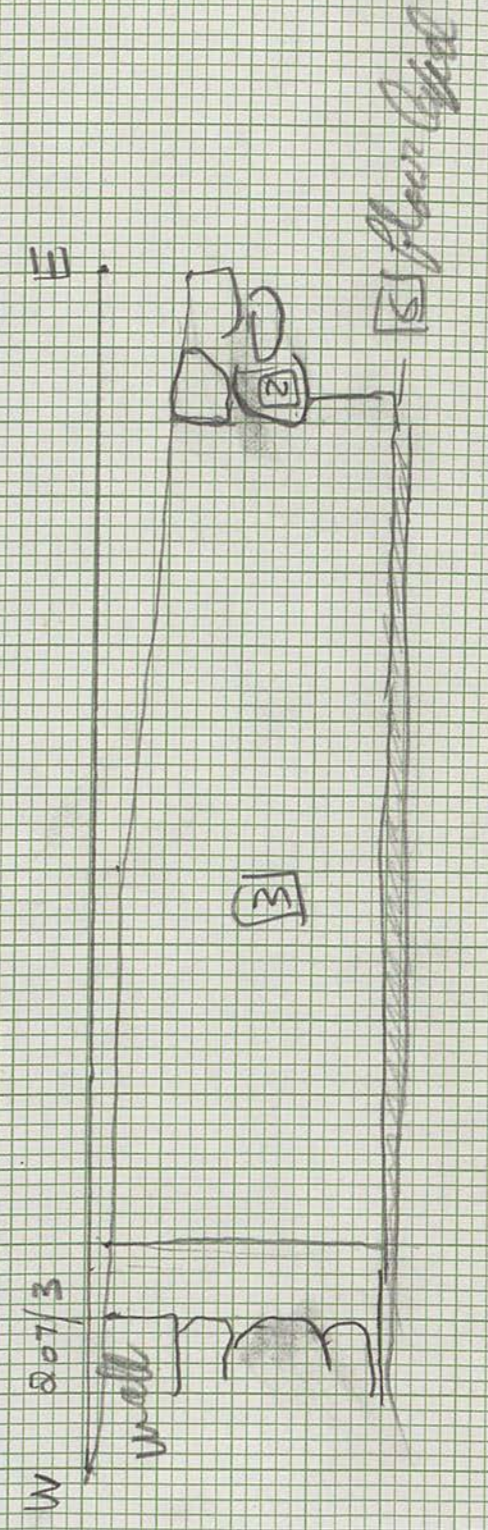
more friction may be required.
 ie. another turn or two around
 shovel handle

Alternative: To 'classical' or 'Blue Mountains' classical abseil down
 with fixed belay. Double figure of eight, locked off.
 Probably safer, but more painful.

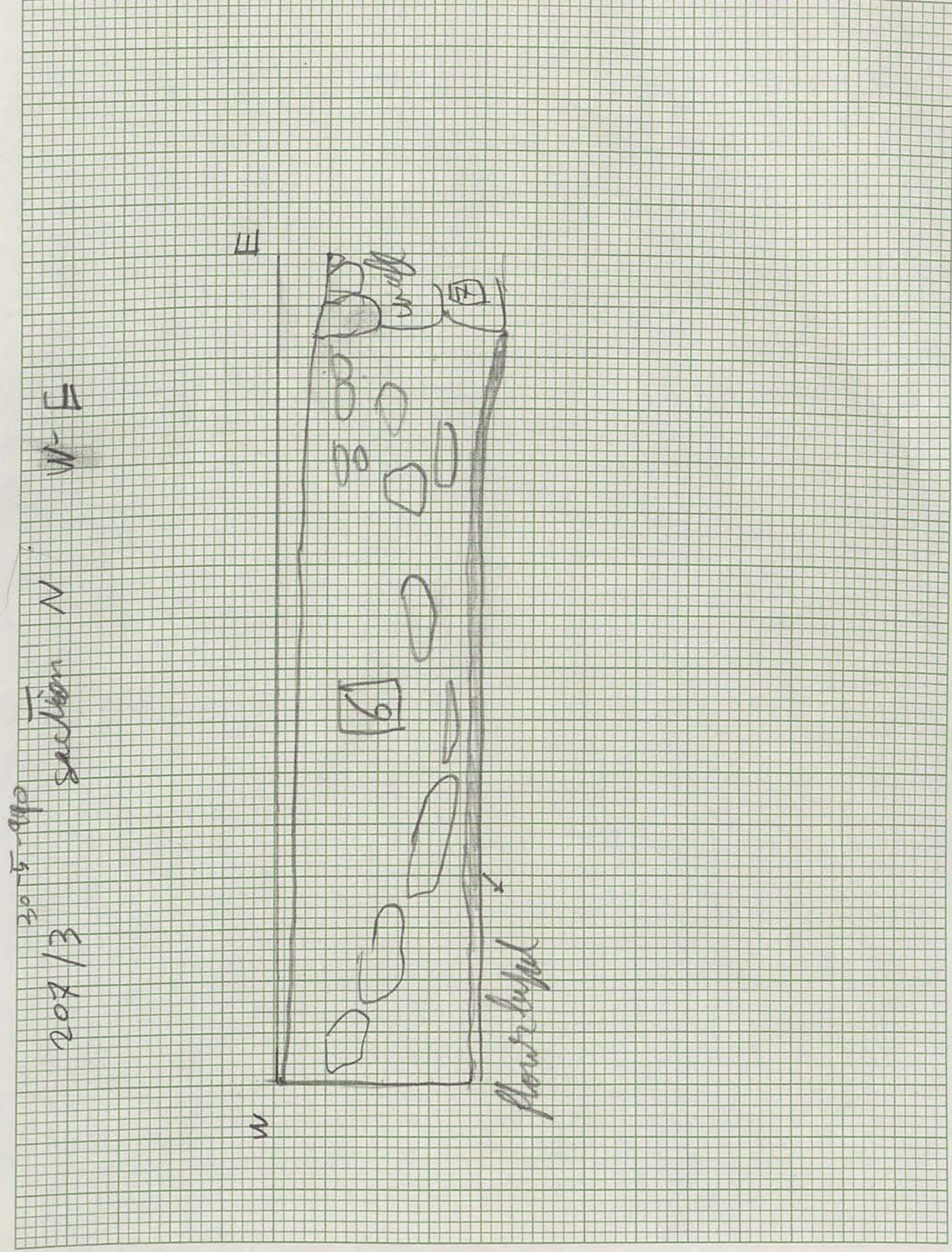
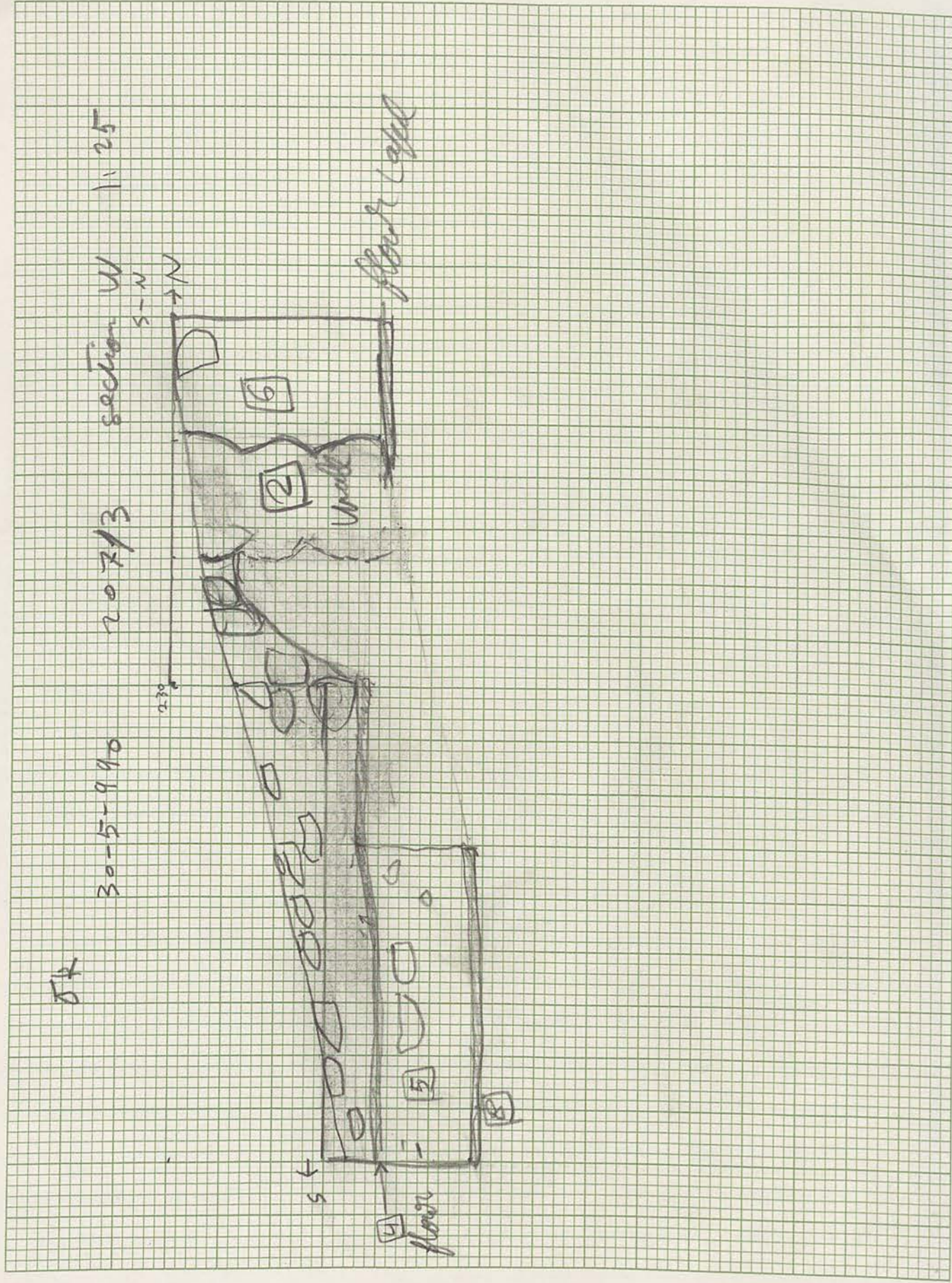
30-5-990
 207-3 section -S- 1:25



JK- 208/9 8/5-990 section [N] W-E

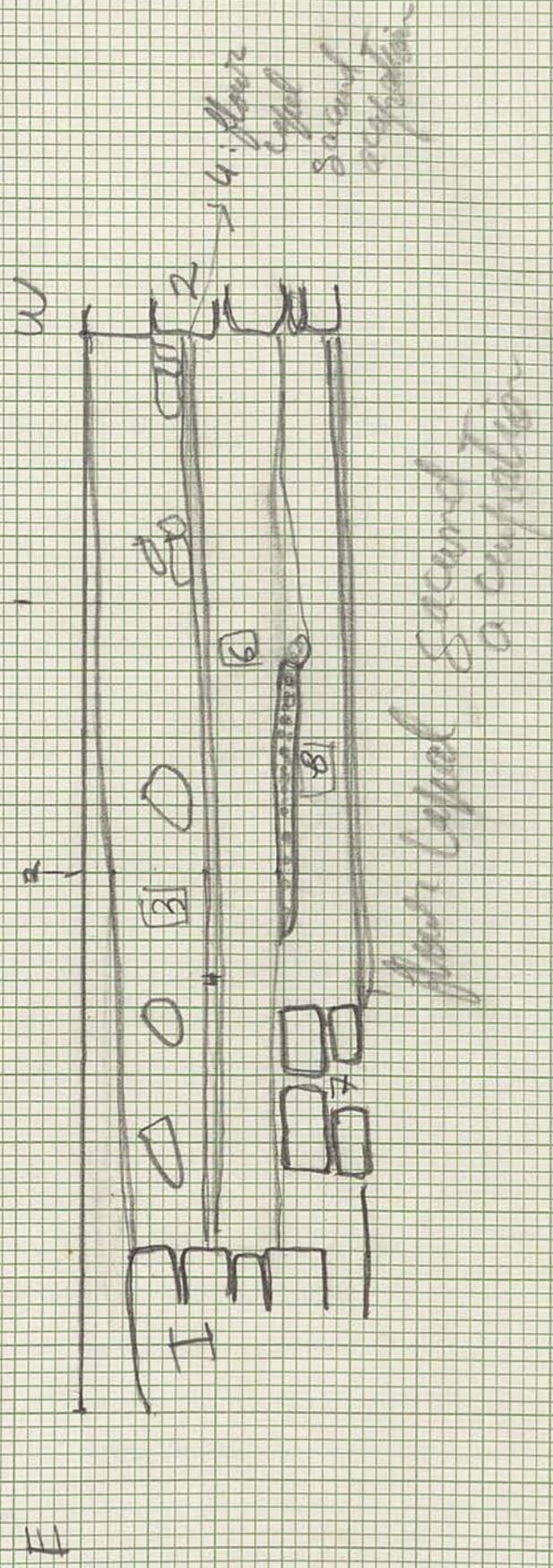


possibly removed
 to reveal well
 to W of cistern/well



JK 1791-8 Section South (S) E-W

6.5-90



6 includes a thin band of small limestone clippings