

MAIN GATE

1989

SUMMARIES OF NOTEBOOKS - DAY BY DAY

↑

NMG 6

NMG 5

NMG 4

NMG 3

NMG 2

NMG 1

MG 7

MG 4

MG 1

EMG 1

MG 8

MG 5

MG 2

MG 9

MG 6

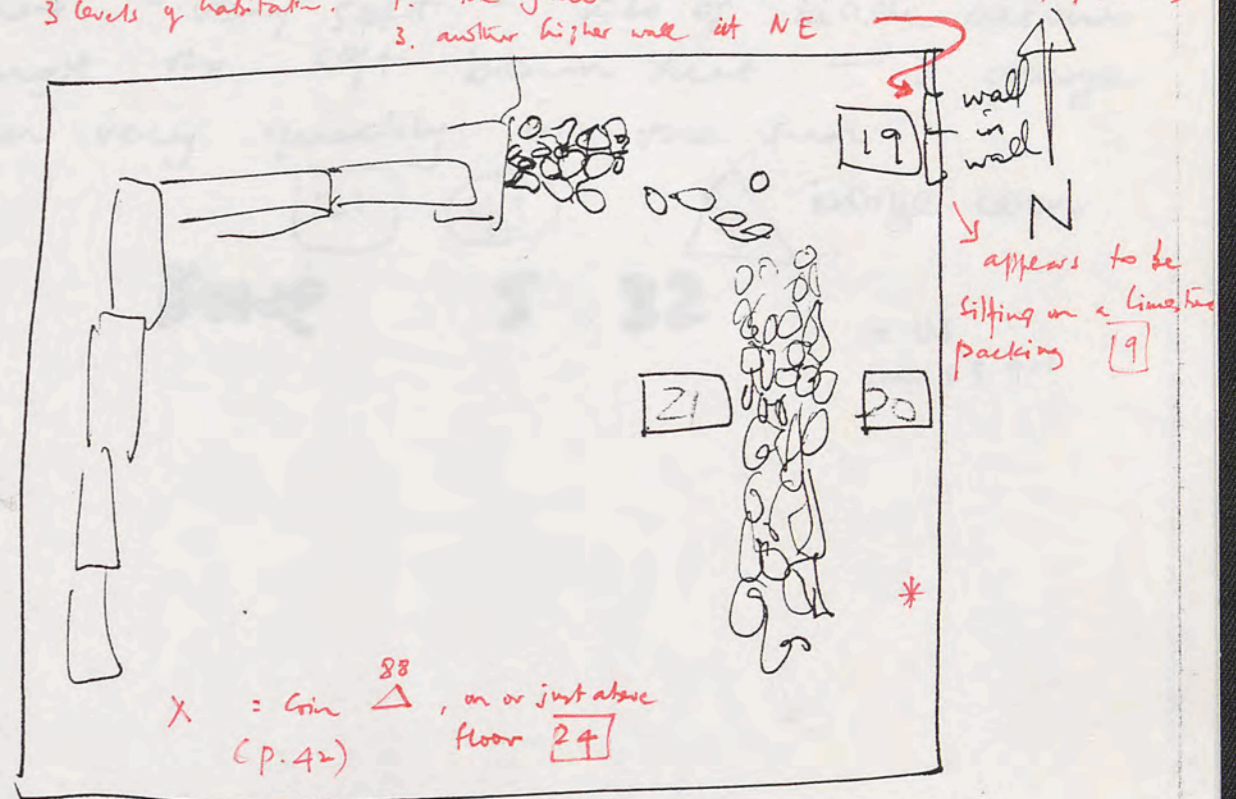
MG 3

PJCS summaries
of MG books: '89

EMG-1

Looking at EMG-1 I can see a wall in the east baulk - running north south. It appears to be sitting on white chips of limestone type packing locus 19 - not in whole trench, only in north-east corner. - it also varies in thickness. It is very thick in north-east corner - possibly 30 cm - (not completely excavated)

P. 42. 3 levels of habitations. 1. the gate 2. rubble wall + dump of pottery 3. another higher wall at NE



* S end of wall 10 cm wider than N. top: medium to small stones + bits of red soil

The turn in the tower wall is very nice and the stone at the 3rd course on the corner is possibly drafted 5 cm down - it is difficult to tell.

There appears to be rubble leaning up against the north-south running part of the wall - I originally thought it was a wall but I cannot see clearly

1-5-89

The north-south running wall -
 Digging the narrow strip b/n the wall
 and the east bank of the trench. It
 is locus [20] - and contains fine
 small stones - bits of limestone and fire
 dirt. [20] (42) [44] iron nail
 S 31 Bone Sample S 31 charcoal

* On the west side of the wall is
 very different material - it is locus [21]
 - dirt - very soft - lots of black patches
 amongst the soft brown dirt - it changes
 [21] (43) colour very quickly in the sun.
 [21] (43) [48] bronze coin
 Bone S 32 = US
 inv. 89.401

MG 9
 Jack is sick - all his workers are present
 Halaf - also 6 am
 [22] (44) - limestone fall + decay.
 (44)
 [42] bronze coin [53]
 = US
 89.398.



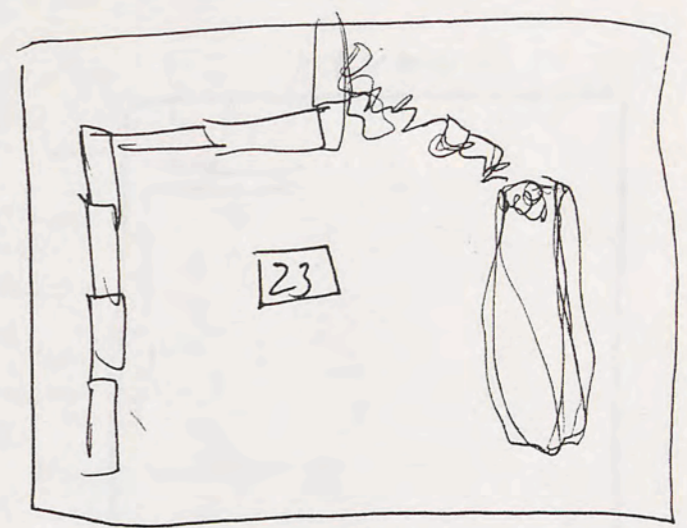
EMG1

34 1-5-8

23 45 fine powdery dirt iron nail

from 5

5 33 Bone



45 2 small bronze frags

it is below Limestone 17

and 21 brown/black soft appears to run under it.

glass frag 47

MG9

Nice edge appearing to city wall and turn up to tower - construction of orthostat wall appears to be different - they are flat as opposed to standing up.

4 small things 2 large coins

EMG1 21 48

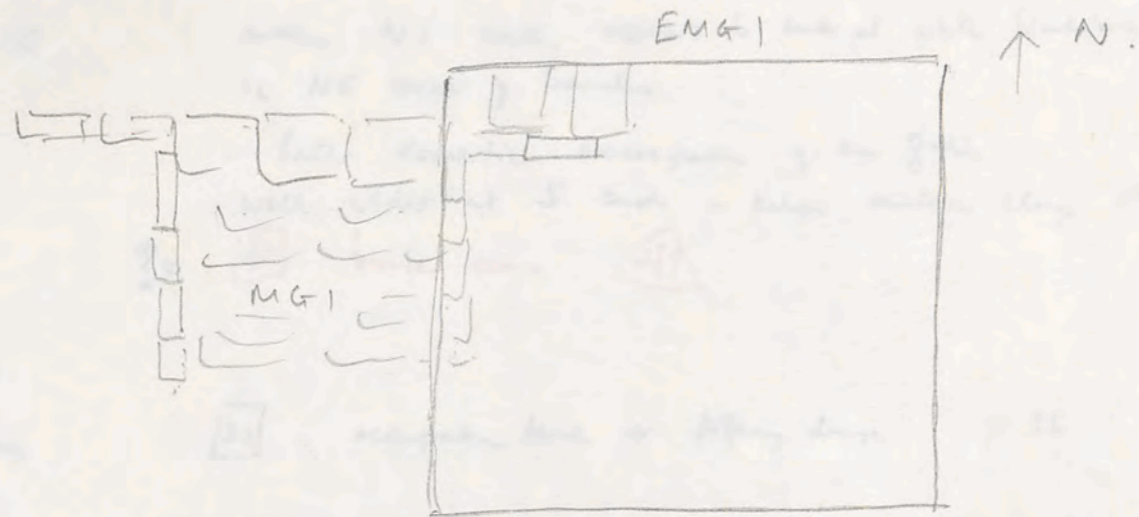
- 22 weak red b.s.
- 8 echinus bowl rim
- 12 ring bases 3 footless bowl
- 1 amphora base
- 2 fine rim

EMG 1

1989

1.

15 April measured top soil.
 16 April top soil figure has 89.451



17 April —
 18 April. ↑ decayed limestone material.
 already a good line of orthostals appearing
 19 April ↑ limestone decay glass 89.166. bronze 89.167
iron nail 89.165
 20 April 17 limestone decay bronze pin ▲
 22 April ↓ limestone decay 89.334. 89.331
 23 April ↓ decayed limestone glass 89.332
18 black soil
 24 April. large fallen blocks NE corner.
 black + red + brown soil (w/ limestone) (not soft)
 lots of pottery wts of bone
 25 April 18 89.485. 89.484 ✓
 26 April wind no work
 27 April. 18 much pottery + bone.
 very mixed locus of different soils

EMG 1

1 May

see photocopy pp 32-4
[19] [20] [21] [23]

2 May

[21] leaching brown soil lots of pottery + bone.

p. 35

middle N-S wall appears to end at white limestone chis in NE corner of trench

= later domestic occupation of the gate wall wider at S end + perhaps reddish clay stuck to wall

? = [21] house coin [49]

3 May

[21] occupation level or pottery dump. p. 36

4 May

[21]

8 May

NE of trench [21]

[18] arrowhead from 2° tan bottom stone on wall.

[77] four bronze coins figurine horse 89.559
= 89.830-33

[24] level: brown w. flecks of limestone

9 May

cleaning EMG 1. (p 41)

[21] is alternation of gray, red, gray etc. c 5 cm?
much pottery looks like a dump.

On E of middle wall = packed limestone rubble - not natural tumbled limestone

was the rubble wall dug into [21] or
was wall constructed first + then deposit laid
arrowhead that that level was once a floor

p. 42 excav. of SE corner might show this

Sunday 23 April

EMG 1

10 May

cleaning bank

11 May

cleaning bank. S bank, W of rubble wall. At E of rubble wall

14 May

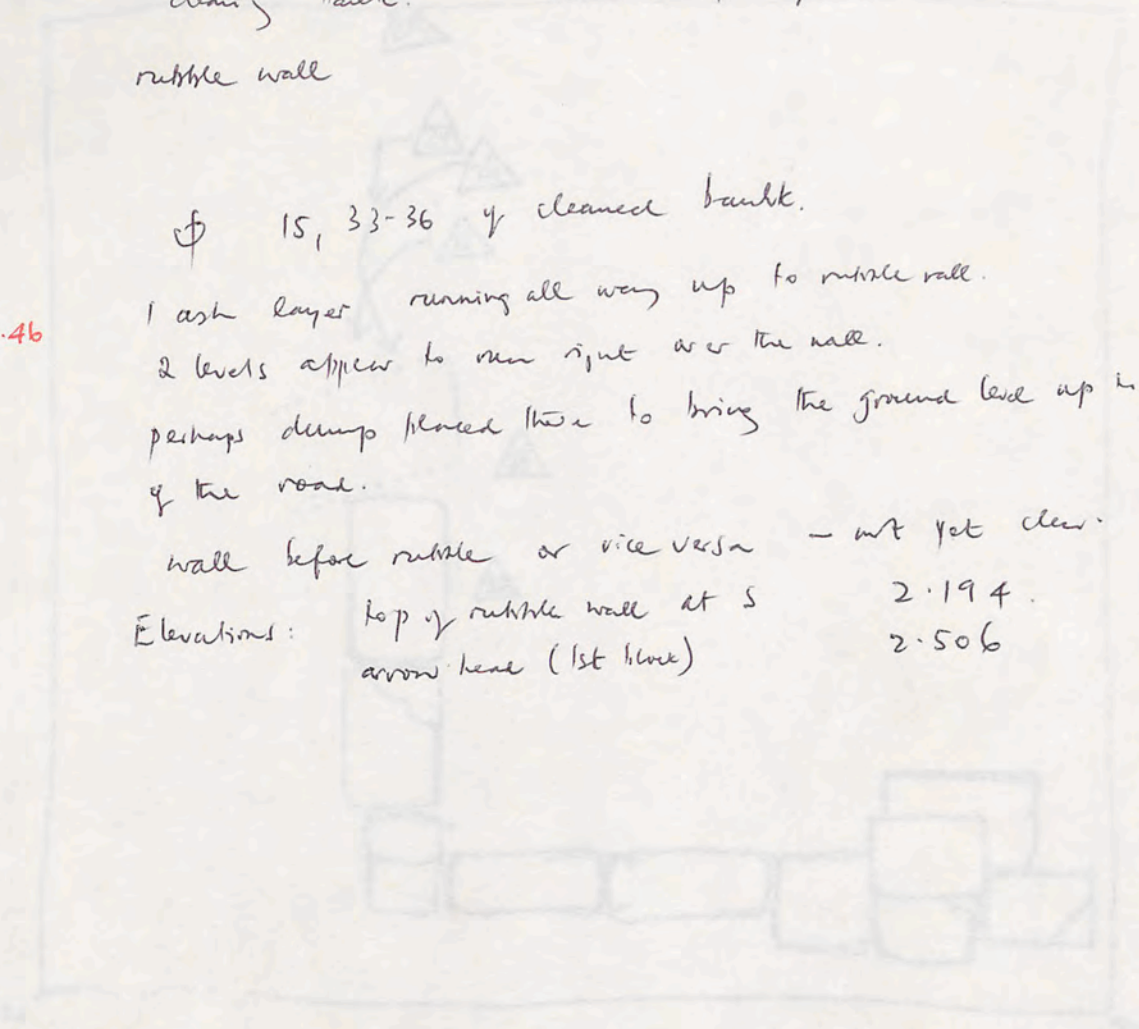
p.46

15, 33-36 of cleaned bank.

1 ash layer running all way up to rubble wall.
2 levels appear to run right over the wall.
perhaps dump placed there to bring the ground level up to that of the road.

wall before rubble or vice versa - not yet clear.

Elevations: top of rubble wall at S 2.194.
arrow head (1st level) 2.506



11th level



12th level



13th level



14th level



15th level

7

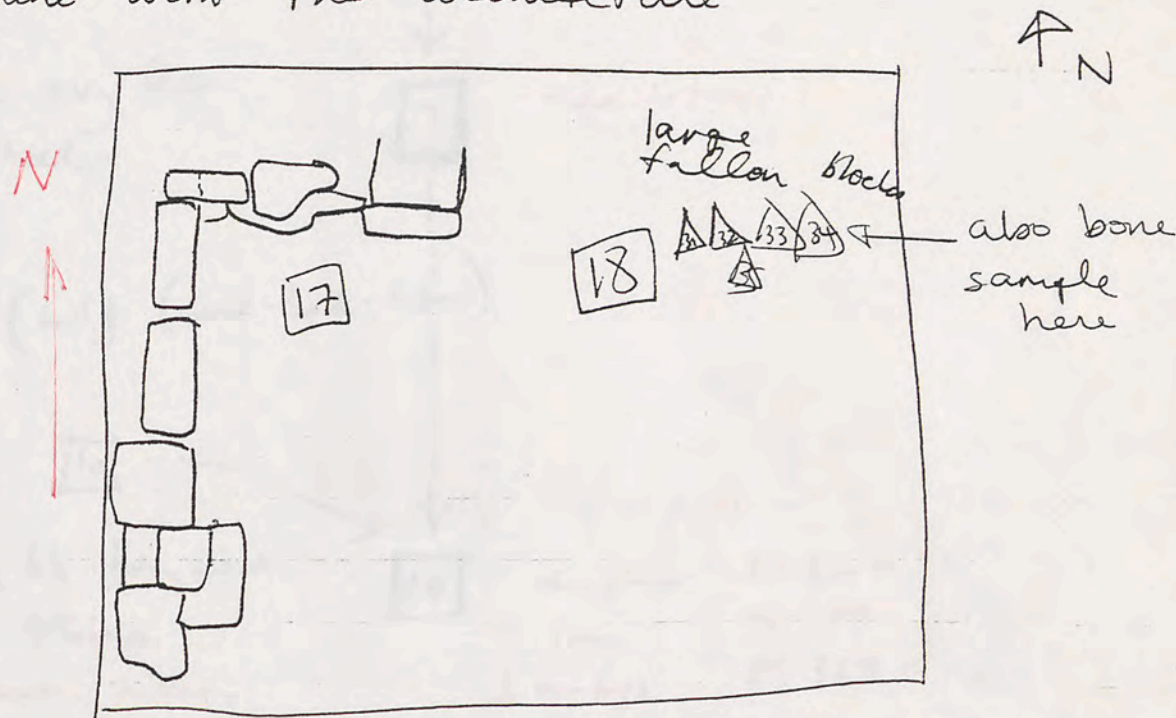
Monday 24th April

p. 27 [17] = decayed limestone
[18] = black soil

EMG1

[18] (39)

This trench very confusing. I don't understand why locus [17] and [18] are at same level in trench. The dividing line isn't clear, but is pretty much in line with the architecture



removing the large fallen blocks from

N-E corner of trench. - black, red & brown dirt - not soft - not limestone, alot of pottery, alot of bone - Jack has identified as possibly a cow. S 27

S 27

31 32

33 34

31

33

35?

bronze frag

glass rim

possible bronze coin = 0(75), 89.310

35 glass frag 89.485 see over page

32

34

iron frag

argentarium

Anna C.

Main Gate

MG2

p. 9.

MG2

MG2

- ↓ line of stones
- ↓ reddish brown dirt
- ↓ hard white very flat level

5

= rubble ?

6

7

street surface.

p. 11 dirt (soil) (mud-brick-like)

p. 12 beneath 7 is 10

soft. big his body shed
dty. dirt colored.

touched on by accident in places.

10

p. 17

rim glass	89.360 ✓
iron.	89.359
3 numpres	89.358 ✓
rs	

MG6.

MG6

p. 16. MG6 South gate/tower does not appear to have the same orthostat cladding as north tower/gate.

p. 21. MG6 [S tower.]

foundation trenches EW = 15
NS = 16

p. 18 MG6 ?
foundation trench 12
lots of big bones. 516

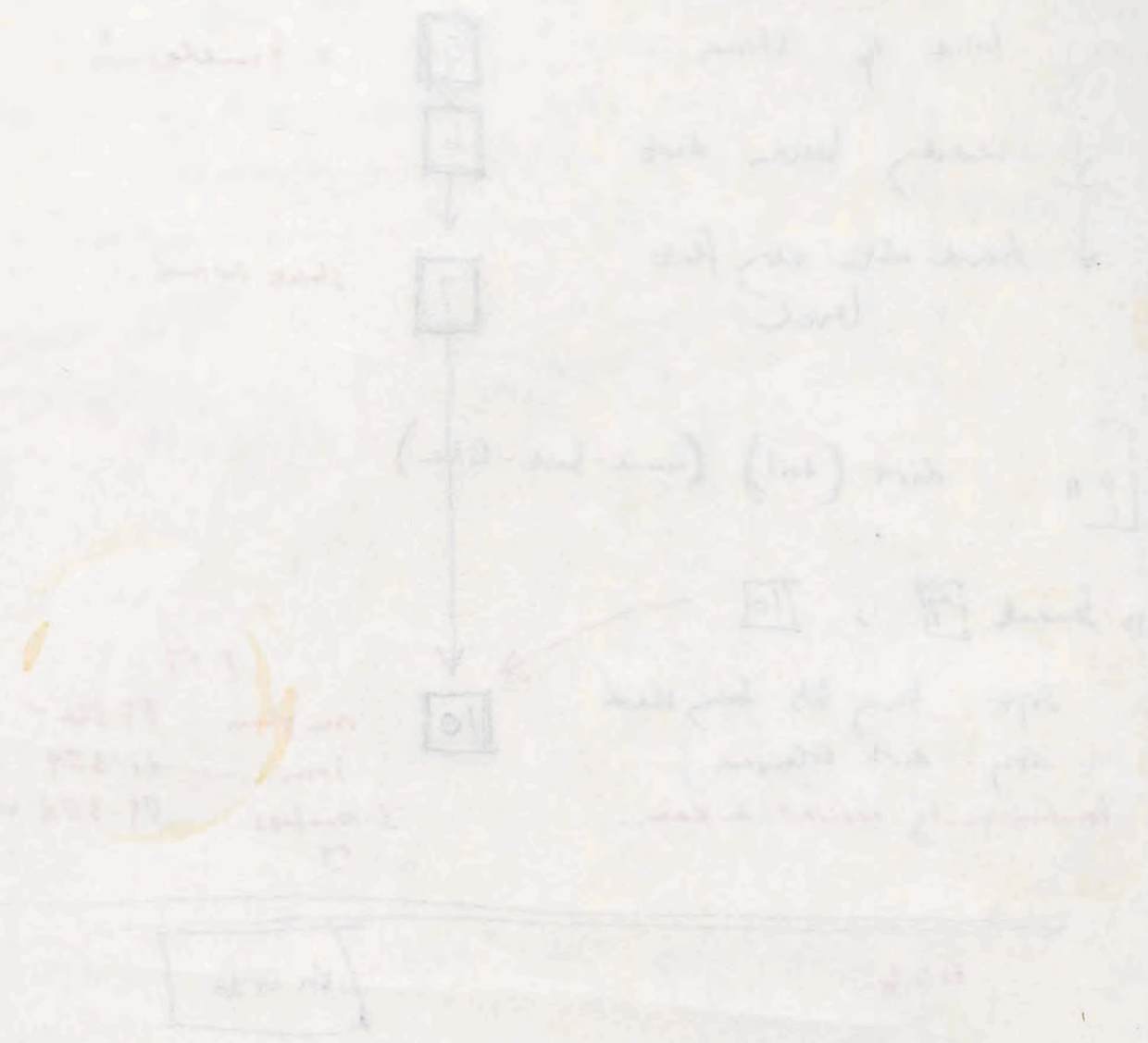
Cris 89.361
US = ? Ant. iii

12 = soft spand wall
but not found in trench



MG 6 [13] p. 18 harder level dirt just above bedrock.

frag glass 89-353



Student Name ID number ID number

A Currow
EMG I.

p. 21 figure frag from top soil 89-451

numerous objects recovered from EMG 1

1. April - clearing & cleaning site
2. April - clearing very large trench
3. April - clearing - then ...
4. April - clearing - then ...
5. April - building stone ...

Anna Curran

MG6

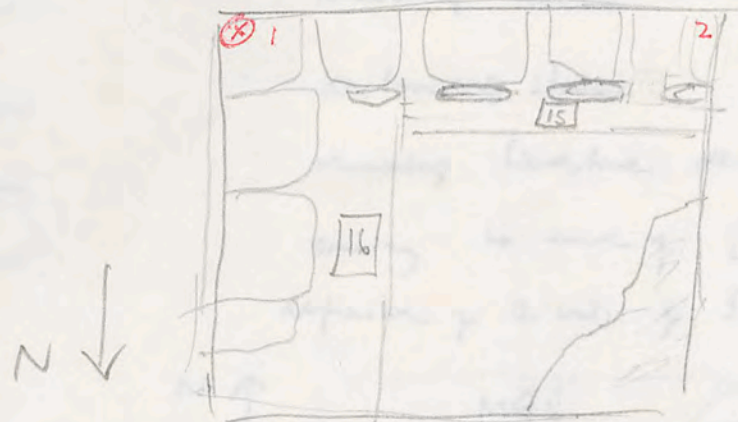
1989

1.

MG6

16 April 11.21

foundation trenches



elevation 2-4-89

(X) = highest stone in trench

1. 45 cm

2. 105 cm

15 iron frag 89.295

foundation trench 15 narrower than 16

Q. What are measurements of foundation trenches.

2 April. clearing + cleaning MG6 decayed stone (fallen blocks)

3 April removing very large tumbled

4 April remove stones. meet with mortar - only the mortar has survived: stones completely decayed ∴ edge of tower lies more to N.

5 April breaking stones. plaster visible. few pieces of pottery: rim good by.

low = 1 Southern 1/2 side of MG6

no orthostat wall

2 fine particled brown dirt

↓ elevation from 1 top 2

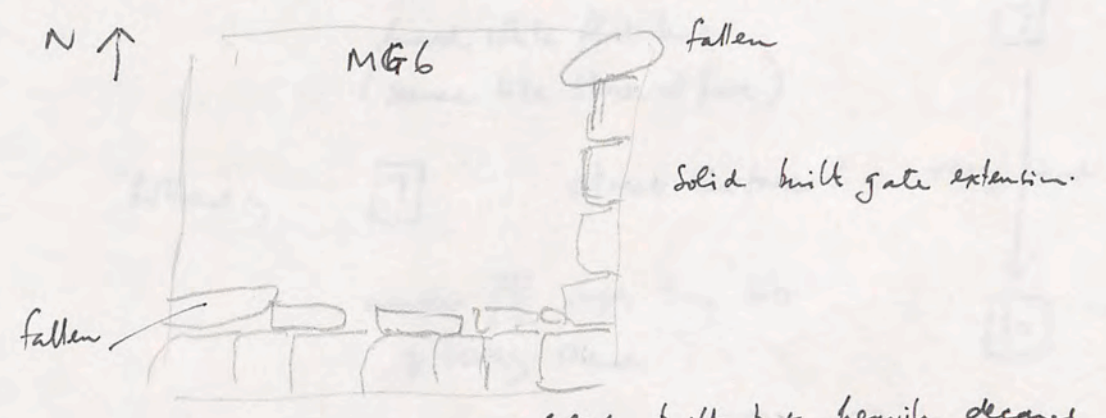
212 cm from (X)

↓ in SE corner: 2 goes under large decaying stones

[3 levels of blocks, decayed, all = 1]

M G 6

- 6 April. clean
- 7 April. removing rubble [I] Limestone decay
- 10 April destroying stones
- 11 April removing limestone decay.
- 12 April coming to end of [I]
definition of 2 walls of S tower + gate extension.



Solid built but heavily decayed
 Limestone plaster is better preserved. faced by smaller stones - not exactly the same as those of the north gate extension
 very fragile: only a 'cladding'

- 13 April removing smallest stones between [I] and [II]
 coin 89.361 lots of big bones, charcoal.
- [12] = soft dirt. runs alongside the walls - but not within the trench
 (poco. Ant iii)
- [13] harder level dirt just above bedrock
 45 body sheds; 1 bs food rg; 2 bs. mt. black pitel
 & many echinus bowls red painted; 1 inner walled rim weak red/black.

Sept 15 April. travelling [13]
 16 April. slowly on foundation trench.
 See top of p. 1

22 April. [13] R511 7, 23 →

MG 2

Anna C. p. 6.

1989

11

5 April

topsoil + stones from the modern track - to find S edge of northern extension of gate.

6 April.

topsoil + stones

8 April.

in bank : topsoil
level of small stone
reddy-brown dirt
hard white flat base
(seemed like stone at first)

3

3

6

7



9 April

follows > 7 street surface? very hard.
under 7 Sept tin bits
& heavy sherd

10

10 April

continuing to track edge 10 18

11 April

removing. looking for edge

12 April.

very few fallen stones in S bank: perhaps road cleared & blocks 'in antiquity'

13 April.

taking out small stones. travelling out 10
rim frag glass 89.360 89.358

Sat 15 April.

layer of soil at end of 13.4.89: higher than level of dirt in MG 4 + MG 6. Decided to take out rest of road.

9 May

working back another metre - to understand gate extension etc.

10 May

removing material 6

11 May

cleaning stones in MG 2

MG2

Sat. 13 May

through hard level [7] - no pitting.
lovely paving stones.

14 May

extending to MG3 i.e. taking out the vault.

top soil 20 cm.

super level 30 cm.

stone, 20 cm.

limestone dry dr.

similar to baulk between
MG1 + MG2

15 May

drawing MG2

removing more topsoil in back area
no pitting

16 May

top soil = [3]

17 May

limestone soil type material [7]

18 May

+ clearing large hole:

diamond-type shape.

20 May

removing stones: unusual shape stones clipped etc to
form a better surface for the road.

lots of pitting, tiny frogs = street material from
dirt just above paving stones.

21 May

cutting [10] [70] glass head ~~at~~ [18]

1 good by rim; 3 good of b.s. 1 echinus but rim.
1 good of ring base

22 May

cleaning paving stones ϕ at 7.30.

paving stones end at E: hard road surface starts.

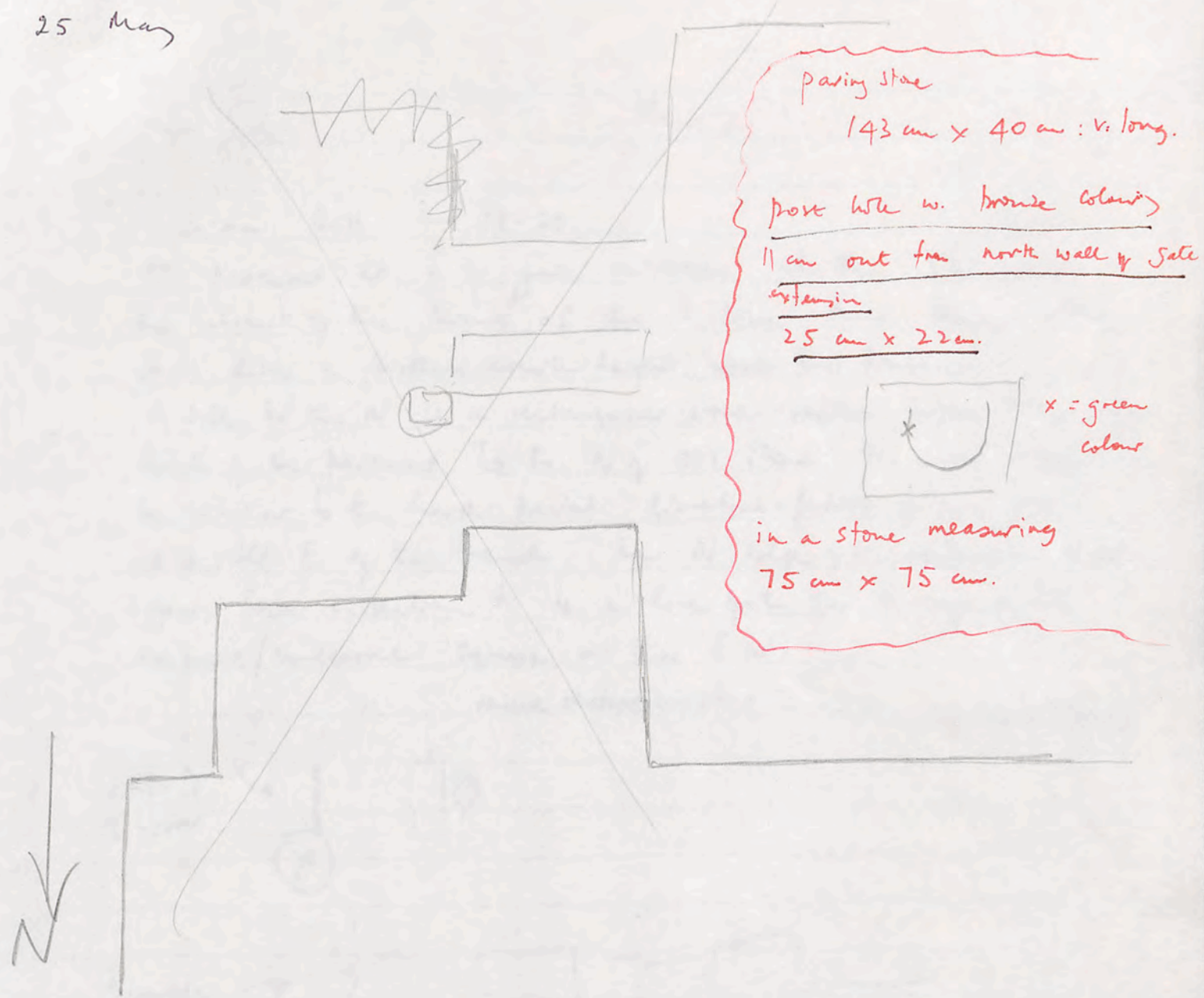
23 May

SW corner (see notebook PJC) - large stone in situ. -
= projection from S gate extension similar to projection from
N gate extension. = ? omitted from summary.

24 May

cutting.

25 May



paving stone
 143 cm x 40 cm : v. long.

post hole w. bronze colour
 11 cm out from north wall of gate
 extension
 25 cm x 22 cm.



in a stone measuring
 75 cm x 75 cm.

10 = dirt just above the paving for which pottery + bone comes.

Sat 27 May removing limestone decay.
 28 May greater earth fill in SE corner of MG 2 : c. 20 cm as oppose to 5 cm everywhere else

SW corner : where do the paving stones end
 "I believe they end with the edge of the gate extensions."

* a job for next year.
 in baulks of MG 6 + MG 4 : no sign of this road.

GATE

2:3 5.85

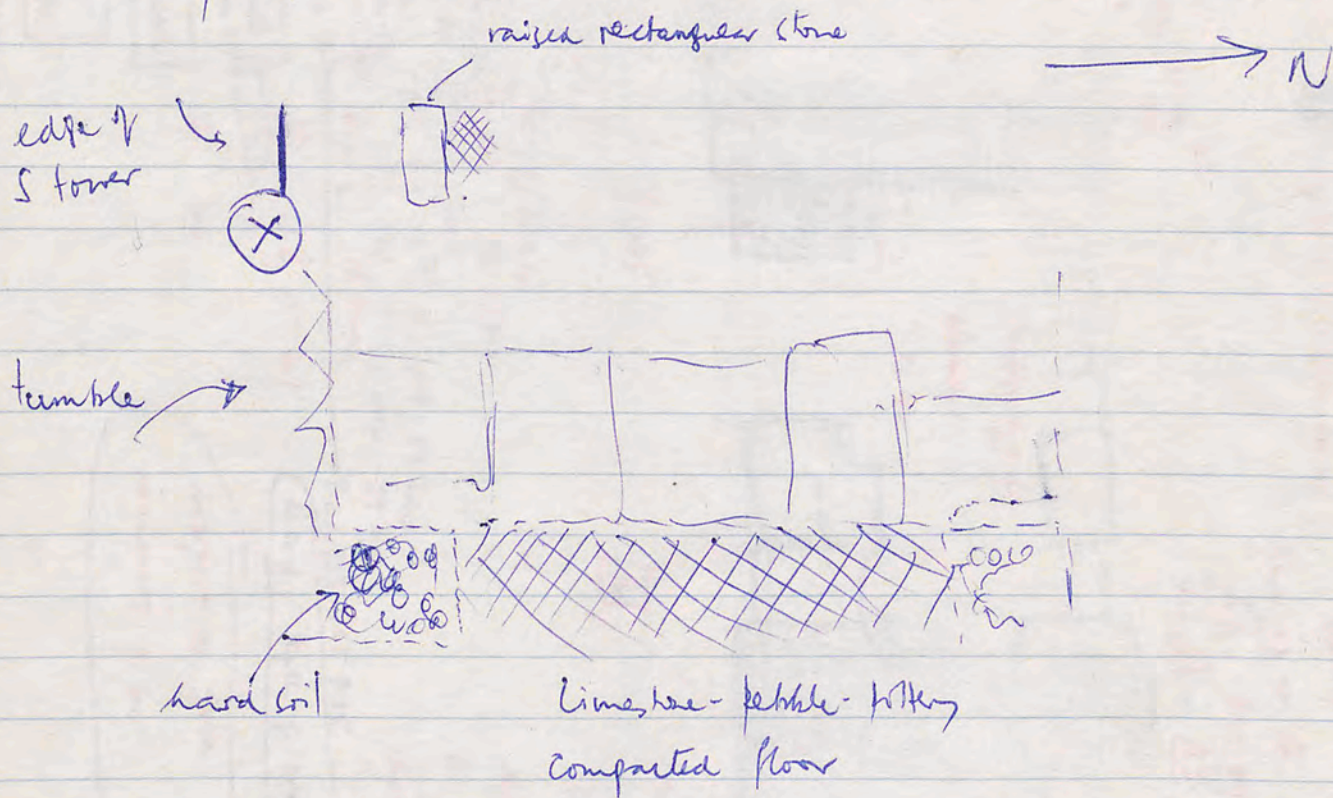
Main Gate

MG2

10:30 am Plot 20, 15-21.

Of pavement at S of gate entrance. On the SW corner the limit of the 'thrust' of the S tower has become clear. It is like a bedding-course height above the pavement.

A little to the N is a rectangular stone raised higher than the level of the pavement. To the N of this stone the floor appears to be similar to the hard-packed limestone-pebble-filling floor at the old E of the trench. The N edge of the rectangular block appears from inspection to be in line with the N edge of the compacted/unfloored 'square' at the SW



10:45

We begin to break and remove large stones of tumble to E of the cleared limit of the S tower since this objective, to map the 'thrust' of the S tower, was agreed on a couple of days ago.

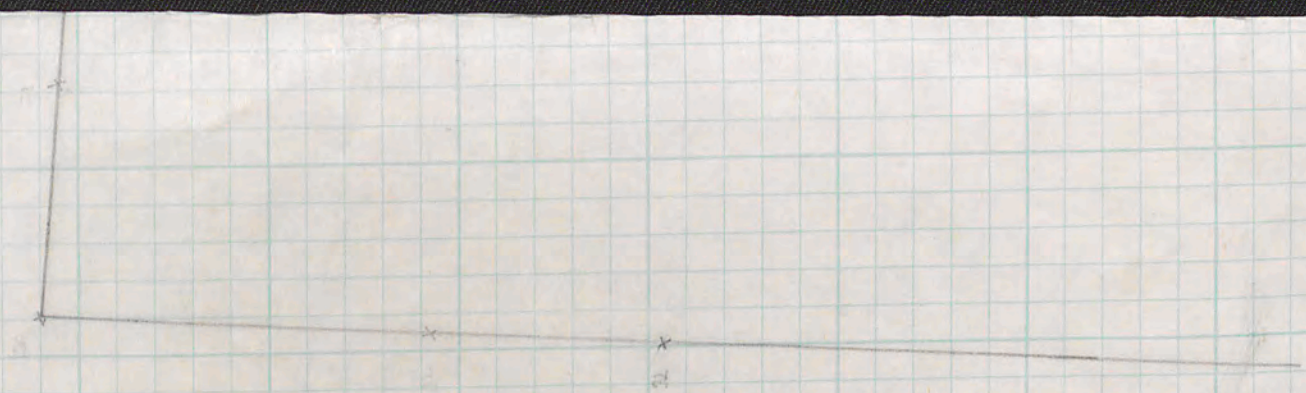
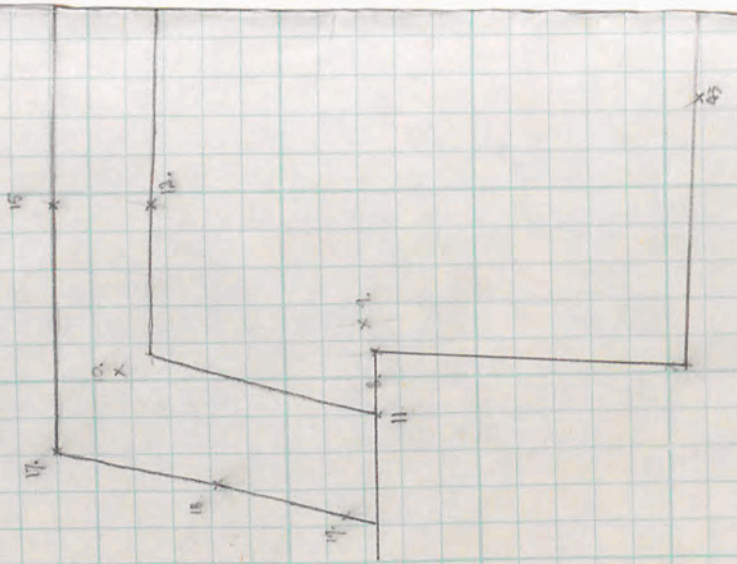
P. 47 packed limestone rubble

[17]

[18]

at same level

89.484

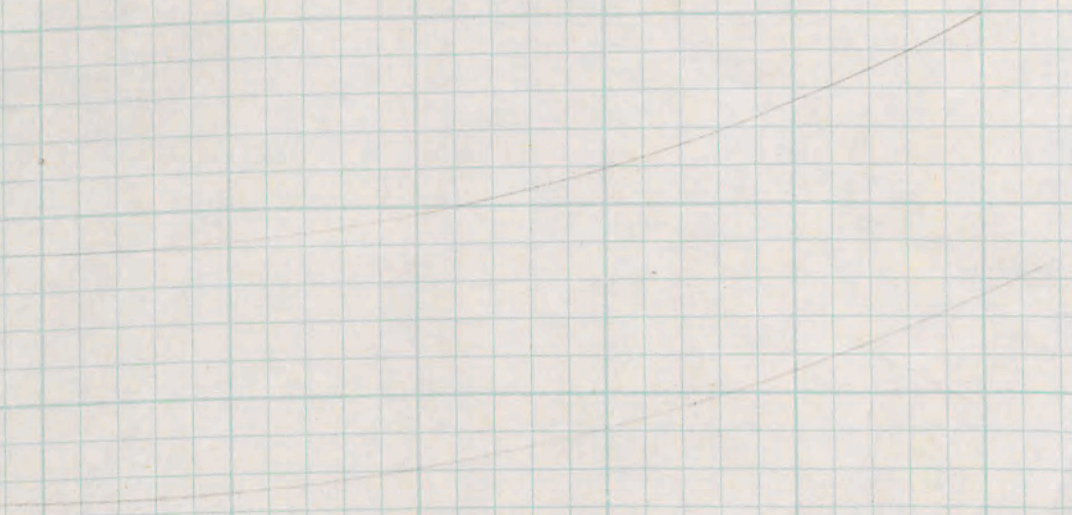


A 1965
 B 1574

A 2066
 B 1439

25 - 1085 DISTANCE FROM 24
 TO NW CORNER OF TOWER (25)
 RIGHT ANGLE TURN BACK
 TO WALL AT 25.

PE PAVED ROAD
 □ = FOUNDATION TRENCH





5TH SECTION 1:25

- ▨ PLANK
- ▨ LIMESTONE POWDER
- ▨ UNK. USE
- ▨ CHALK



MAIN GATE 2
PLAN OF ROCKS ON ROAD

↓ N

