

Radi Okdi

1989

Domestic Quarter

D6 plan ✓

E1 (179/1) plan ✓

E4 (179/4) plan ✓

E5 (179/5) plan x

E7 179/7 plan ✓

D3/D6 bank

E4/E1 bank

E4/E5 ?

179/7 - 179/4 bank

D6

208/6

loom 4

begin

22.4.89

p. 18

21.4.89

frag of column 0.65m
stone base

[4] = centre of trench 89.230 frag figure 2 legs?

p. 21 [4] is a level floor

p. 21 beneath [4] at the E is [7] = soft, ashly grey
much pitting + bone

p. 23 27.4.89 [7] ^{p. 25} 89.423 appears harder. (p. 26 = floor level)

p. 25 D6 [9] lamp. 89.437 [9] = N of square. ashly grey (p. 25)
round stone with depression

heavy red ← [10] beneath [7] and above bedrock.
→ = transition to [7]

[10] is a spit at S of [7] see p. 26

D3/D6 bank 25.4.

p. 24 89.435 figure base of wall

p. 26 3.5.89

p. 27 4.5.89

E4/D6 bank

p. 28 8.5.89

E4 [1] lamp 9.5.89 89.534
figure 89.549

D6 [10] 4.5.89

D6 [3] 14.5.89 p. 33

15.5.89 p. 34

E1 = 179/1

(p. 3 Structure of floor)
Room 2

Plaster floor. [4]

form soil + stones above [6]

89.137 to fg bearded man. p. 4 friasulabon

Plaster. red. black pen RU 1989 p. 4

glass head 89.015 E1 [6]

S.A. 89 p. 3. { figurine 89.003
figurine 89.362 ?

89.137

179/4

COURTYARD

E4

Expans p. 10

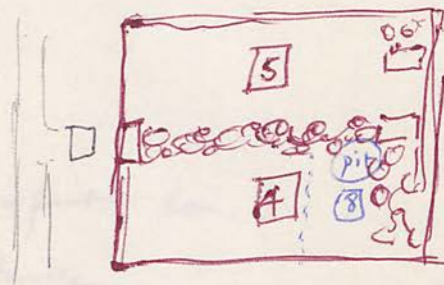
12.4.85 → 20.4.89

top soil brackish soil

89.044

level floor

sketch plan p. 12.



↑
6
beneath 5

p. 13 plaster (red) 4

4 = S of EW wall

p. 16
much wall plaster

4 12 17.4.85 lead 89.335

5 N of EW wall fence + soft soil.

5 B-A ↑ p. 15 18.4.87 89.525

8 a pit ashing ground. W of pit + base

7 a spit 200 x 60

E4/E1 bulks.

p. 20 24.4.87

25.4.87

CONCRETE

179/5

7.5

7.5.89

7.5.89

7.5.89

7.5.89

7.5.89

7.5.89

7.5.89

7.5.89

7.5.89

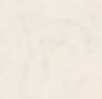
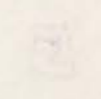
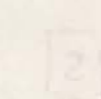
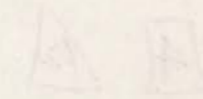
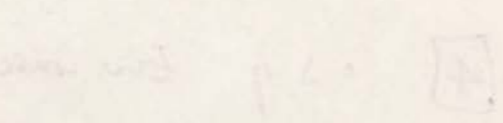
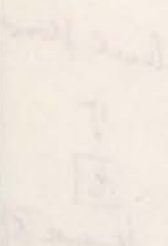
7.5.89

7.5.89

7.5.89

7.5.89

7.5.89



Room OF ANOTHER HOUSE

179/5

N of E 4

begin 7.5.89 p. 28

10.5.89 p. 33

14.5.89 S of EW wall = part of Room 3
and tulle.

179/7

$\frac{3}{8}$
9 = a floor.

in new house, at D3 house

ie. $\boxed{9}$ level head packed floor, belong to 1st occupant.

23.5.89. $\boxed{57}$ \times 23 H. 21 inside kitchen 10cms

24.5.89 $\boxed{10}$ below $\frac{4}{7}$
 $\frac{10}{11}$ below soil. any grey (25.5.89)

→ level floor = 1st occupant

27.5.89 located w wall of Room 3.

28.5.89 banner? on W wall of "Room 3"

179/7 E bank from 23.5.89

COURTYARD

17.9.77 W of E4

W part of Room 3

... Courtyard

top soil 89.768 - base frag green glaze.

W door jamb of door connecting Room 3 + courtyard
visible on surface

17.5.89 quite hard soil + much rubble. *

[4] = SW corner of Room 3

89.928 - frag. figure head of woman

89.934 - frag figure woman

89.937 - legs of horse.

18.5.89

[4] 89.755 - figure hrs.

20.5.89

[7] 100 cm from top of door jamb.

Soft soil much lime

* level floor belongs to 2nd occupation.

[7] 89.900 frag figure. (lost HJ)

Steps to S of doorway

89.728

89.712
frag lamp

89.955

89.733
frag. mirror
89.902

89.877 Stone head

21.5.89

[8] beneath [3] W of NS Wall
& S of doorway

89.883 frag lamp

89.875 fig. woman's head

89.891 2 fr. horse

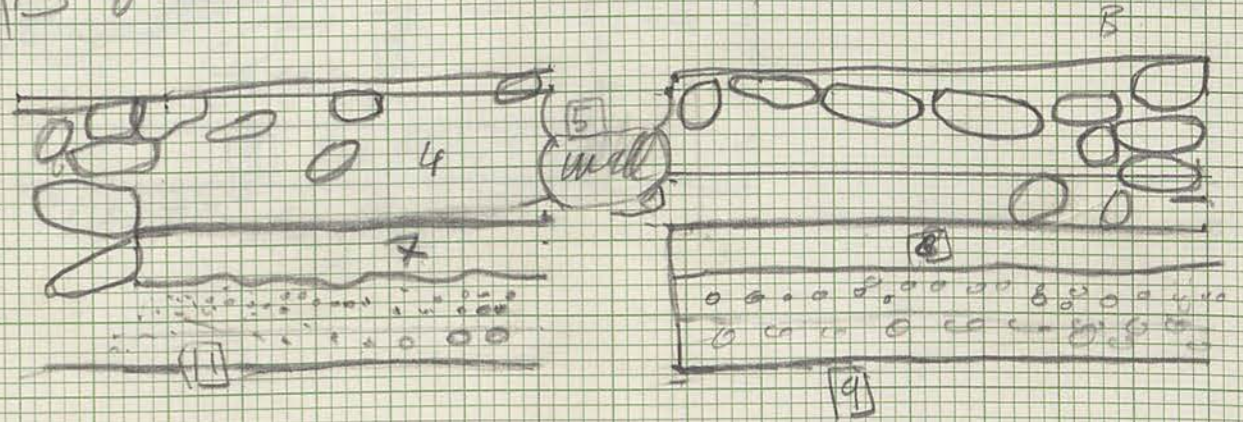
← fragment plate

W end of courtyard
+ Room 3
+ House to W

17.9.77

Section S - E - W

- [4] it is from the top until the top of floor level (7) second occupation
- [7] floor level second occupation
- [1] floor level first occupation



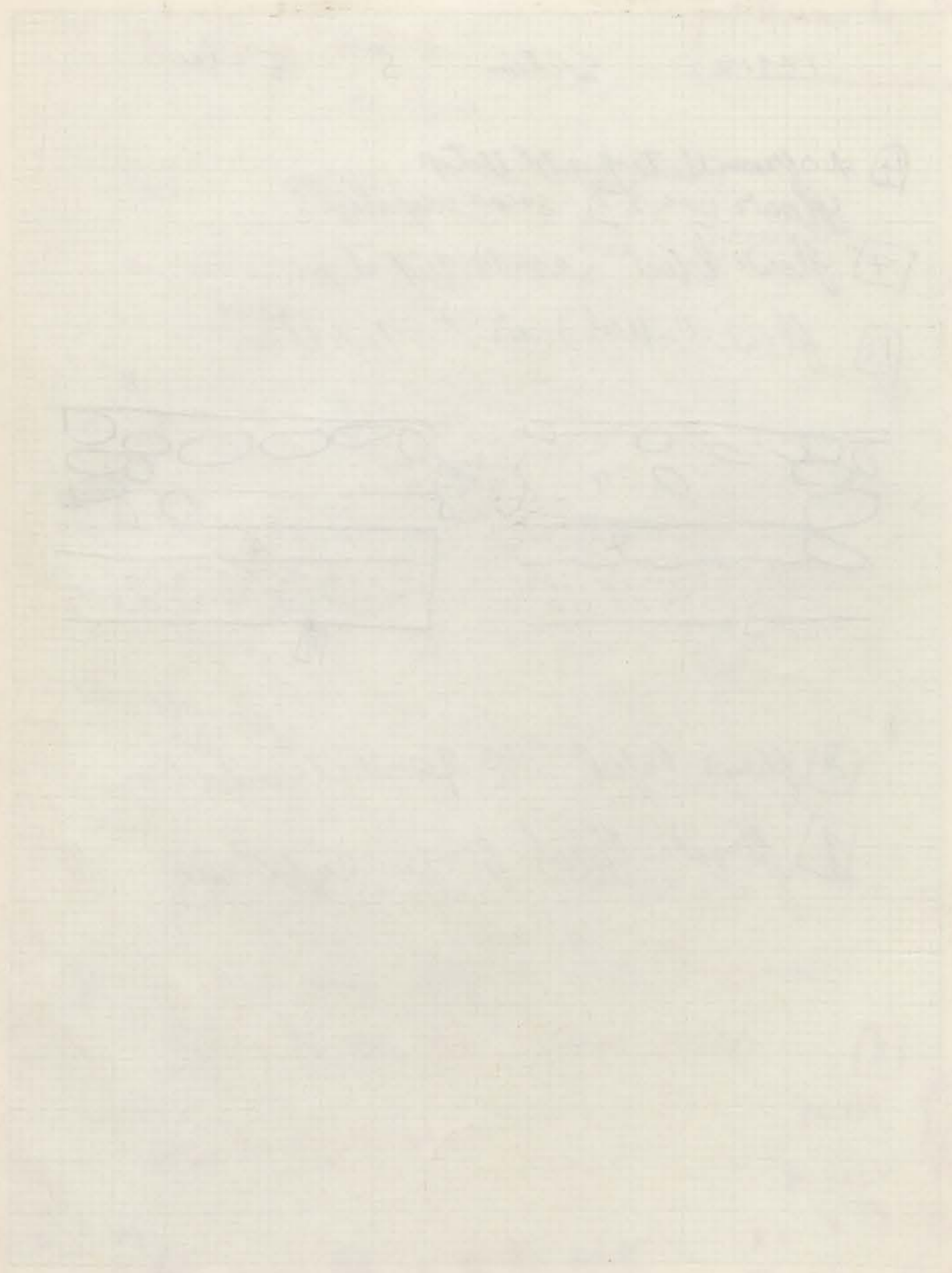
- [8] floor level second occupation
- [9] floor level first occupation

46 1610

K&E 5 X 5 TO THE CENTIMETER 18 X 24 CM. KEUFFEL & ESSER CO. MADE IN U.S.A.

COURTYARD

Hand 9 court

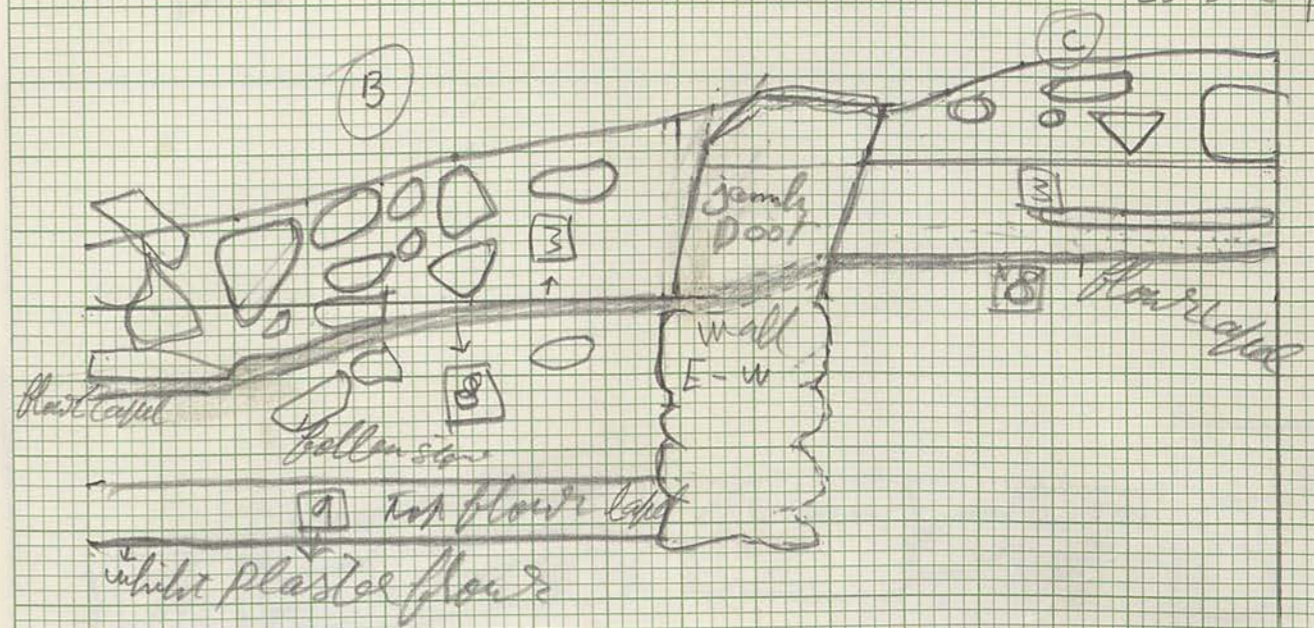


17917

Section N-S

West face
(Westen)

25-5-89



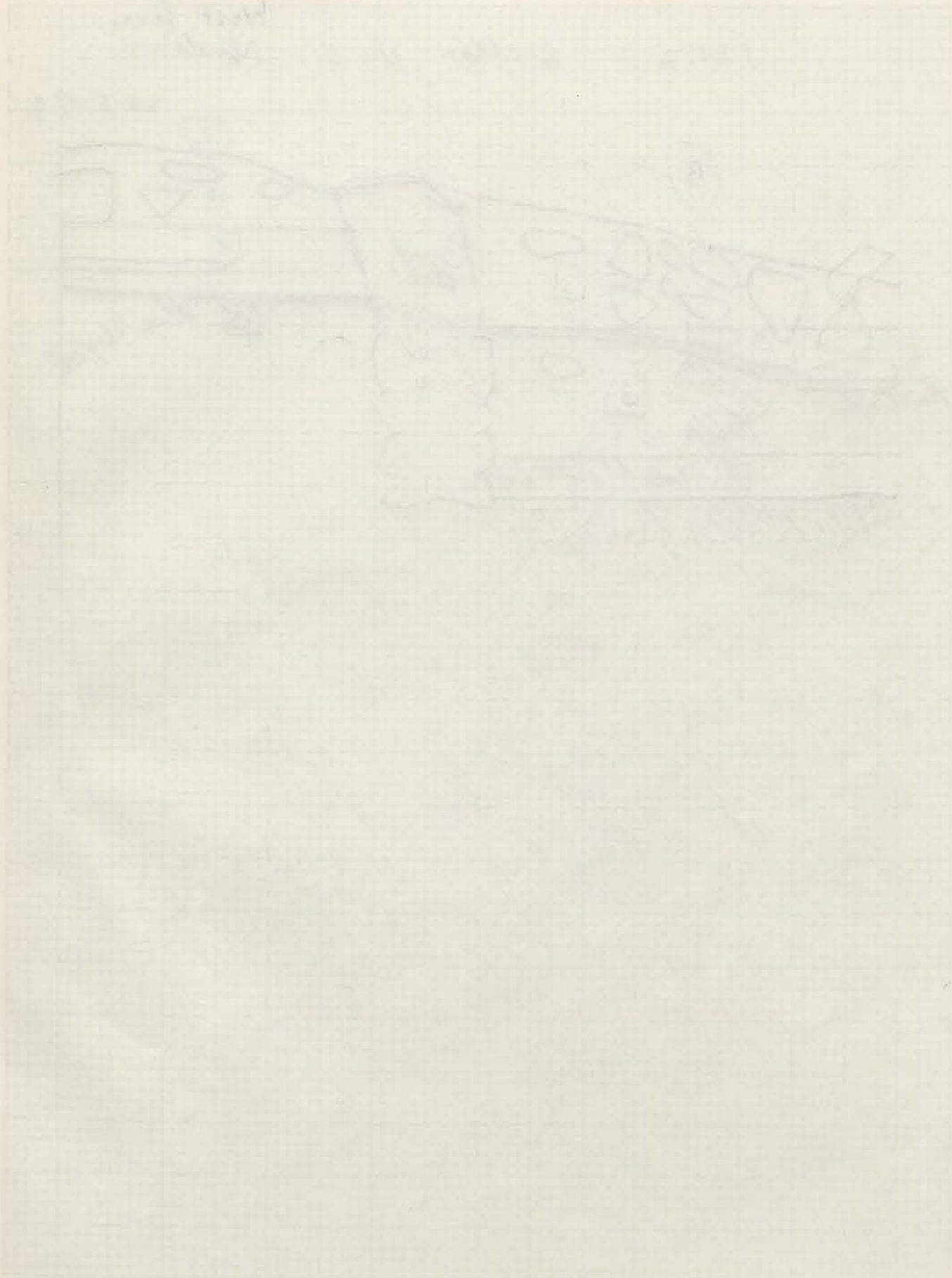
46 1610

K&E 5 X 5 TO THE CENTIMETER 18 X 24 CM.
KEUFFEL & ESSER CO. MADE IN U.S.A.

Hand 9 court

COURTYARD

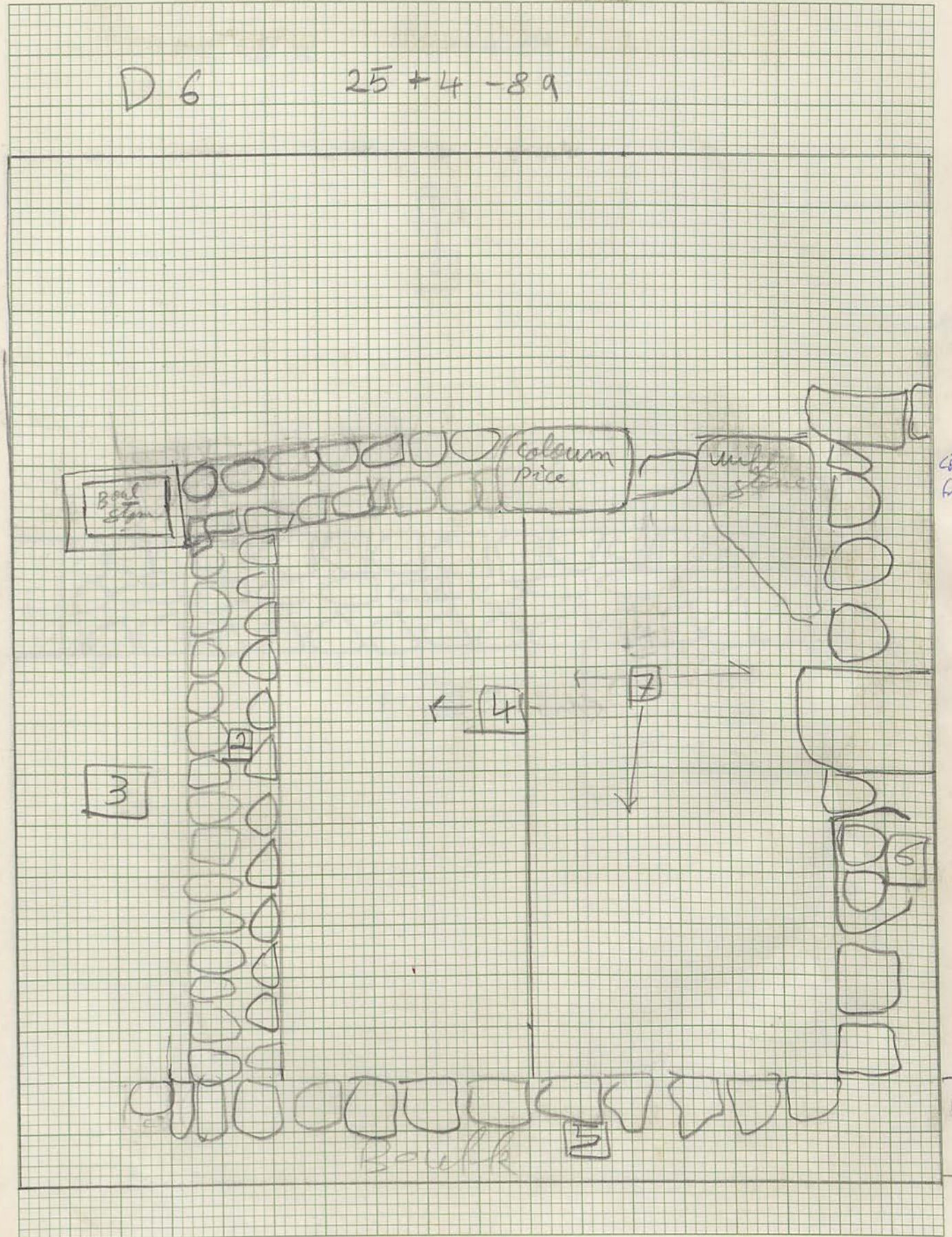
Entrance to courtyard



Courtyard

D 6

25 + 4 - 89



Stone
= bowl

Stone
frag.

Boo

46 1610

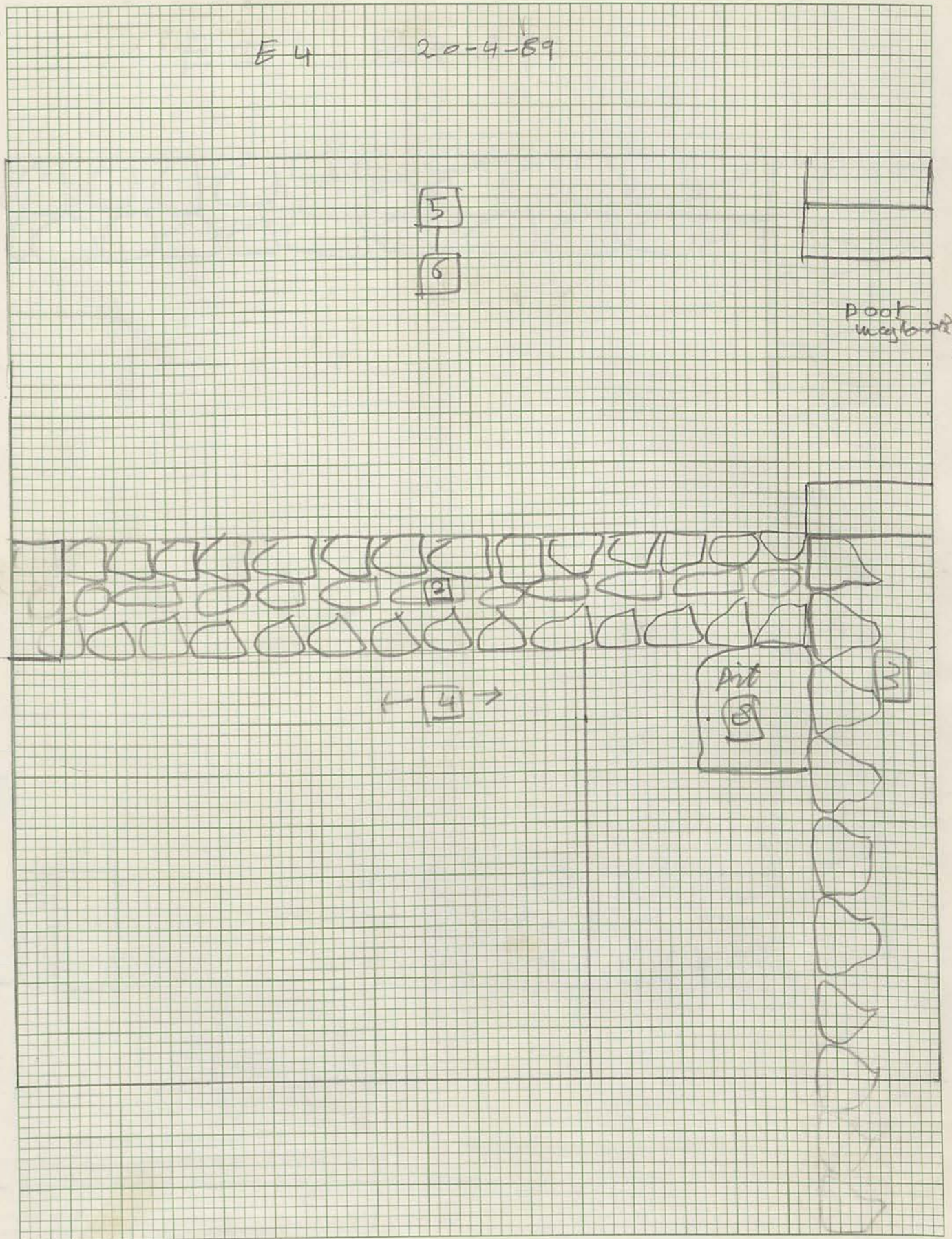
5 X 5 TO THE CENTIMETER 18 X 24 CM.
KEUFFEL & ESSER CO. MADE IN U.S.A.

Room 4

COURTYARD

count

Room 3



E 4 20-4-89

Door way to room 2

pit 8

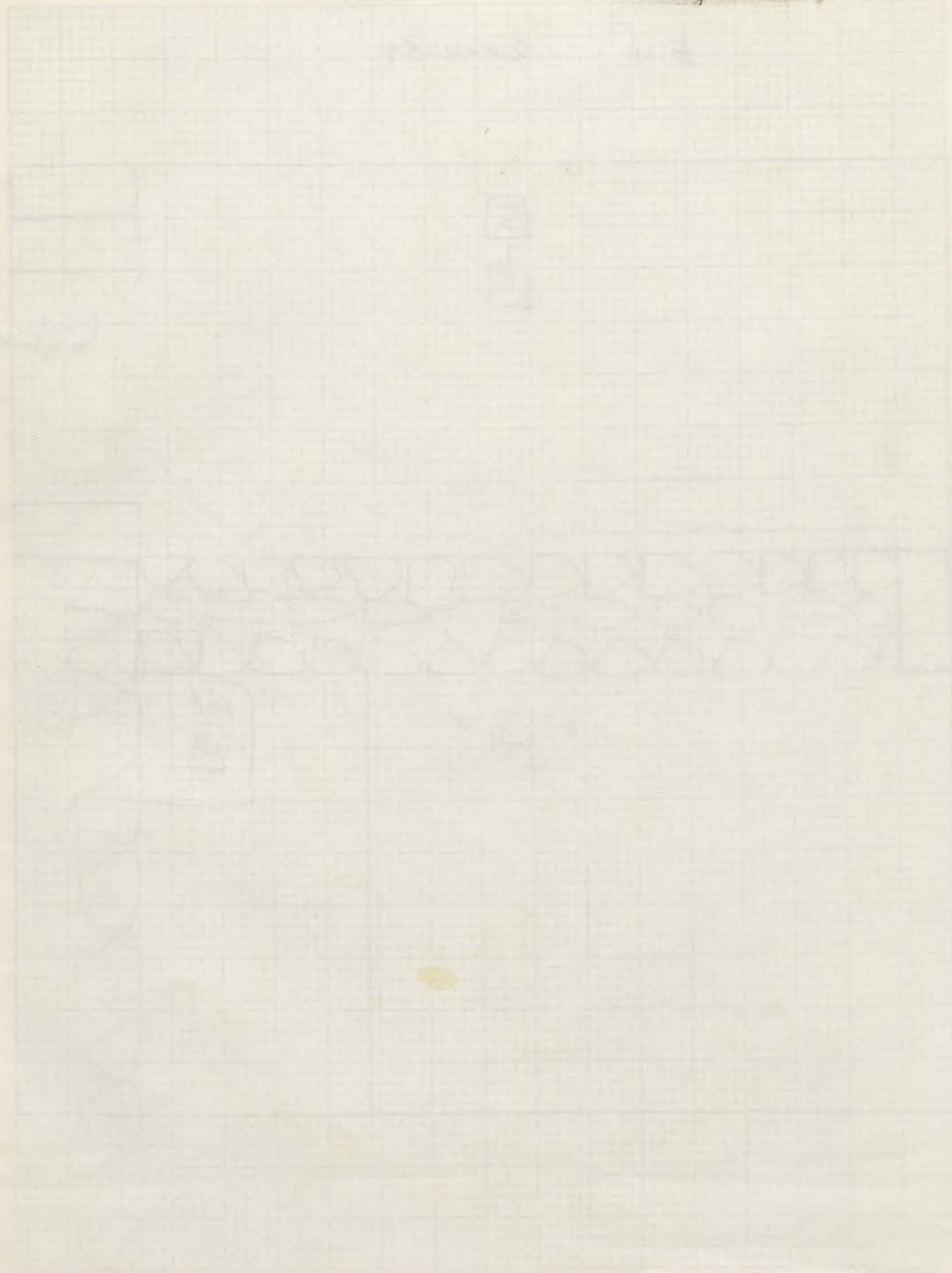
46 1610

5 X 5 TO THE CENTIMETER 18 X 24 CM. KEUFFEL & ESSER CO. MADE IN U.S.A.

Courtyard

COURTYARD

↑ 1.1 1.1 1.1 1.1 1.1



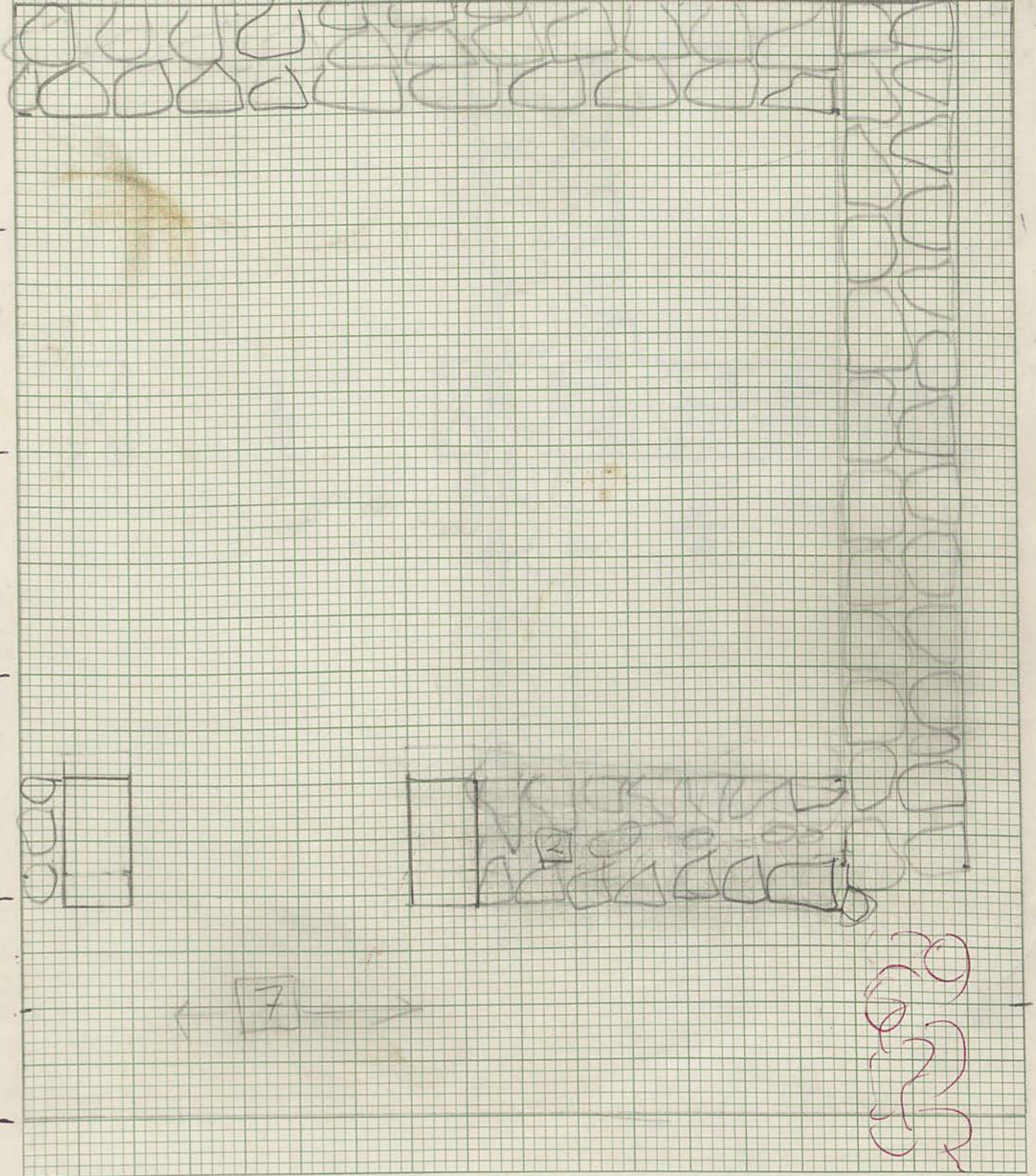
*→

3.75m

Room 2 ←*

E I

8-4-89



46 1610

10.3

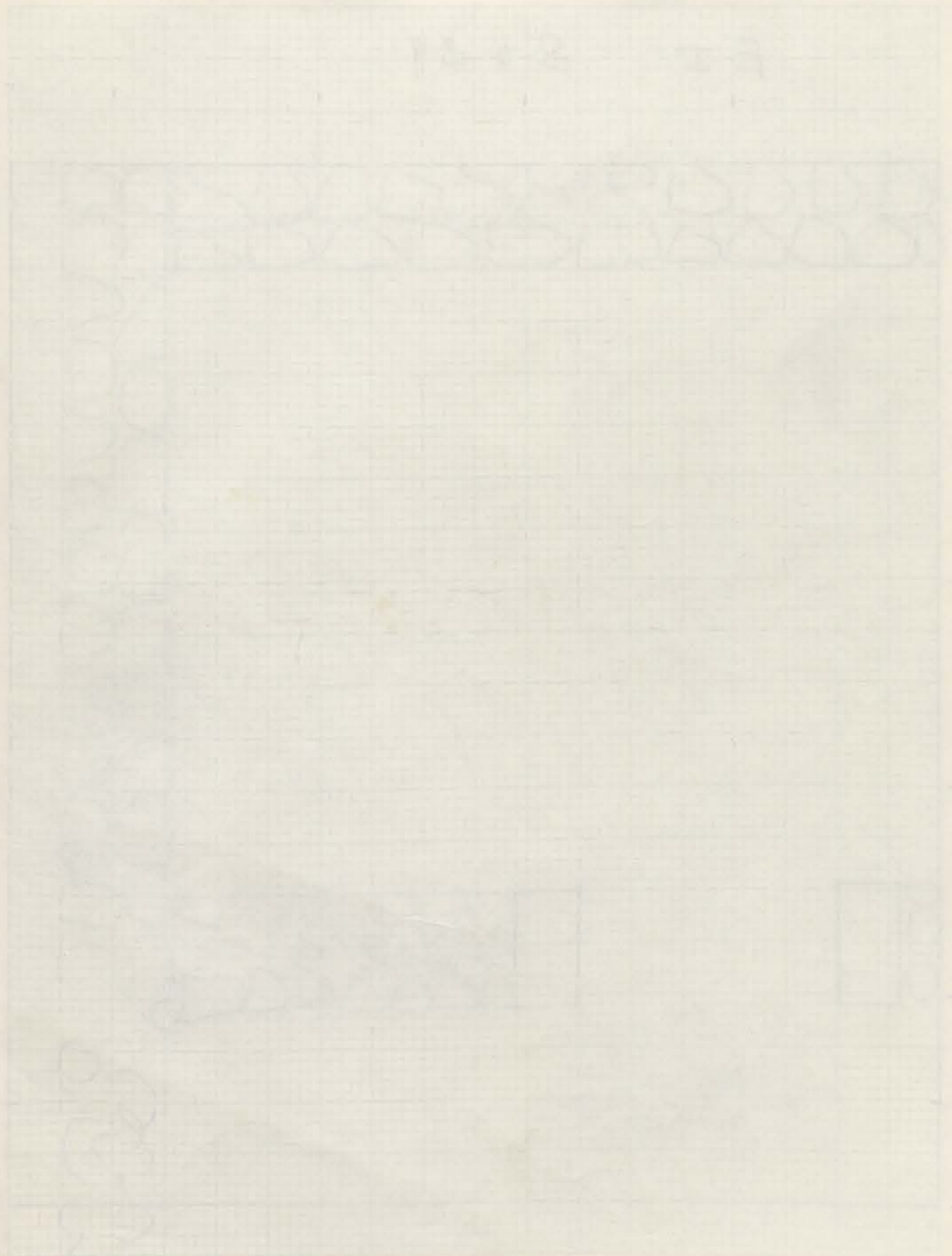
5 X 5 TO THE CENTIMETER 18 X 24 CM. KEUFFEL & ESSER CO. MADE IN U.S.A.

doorway 1.25m

Handwritten notes in red ink, possibly a signature or date, located in the bottom right corner of the drawing area.

COURTYARD

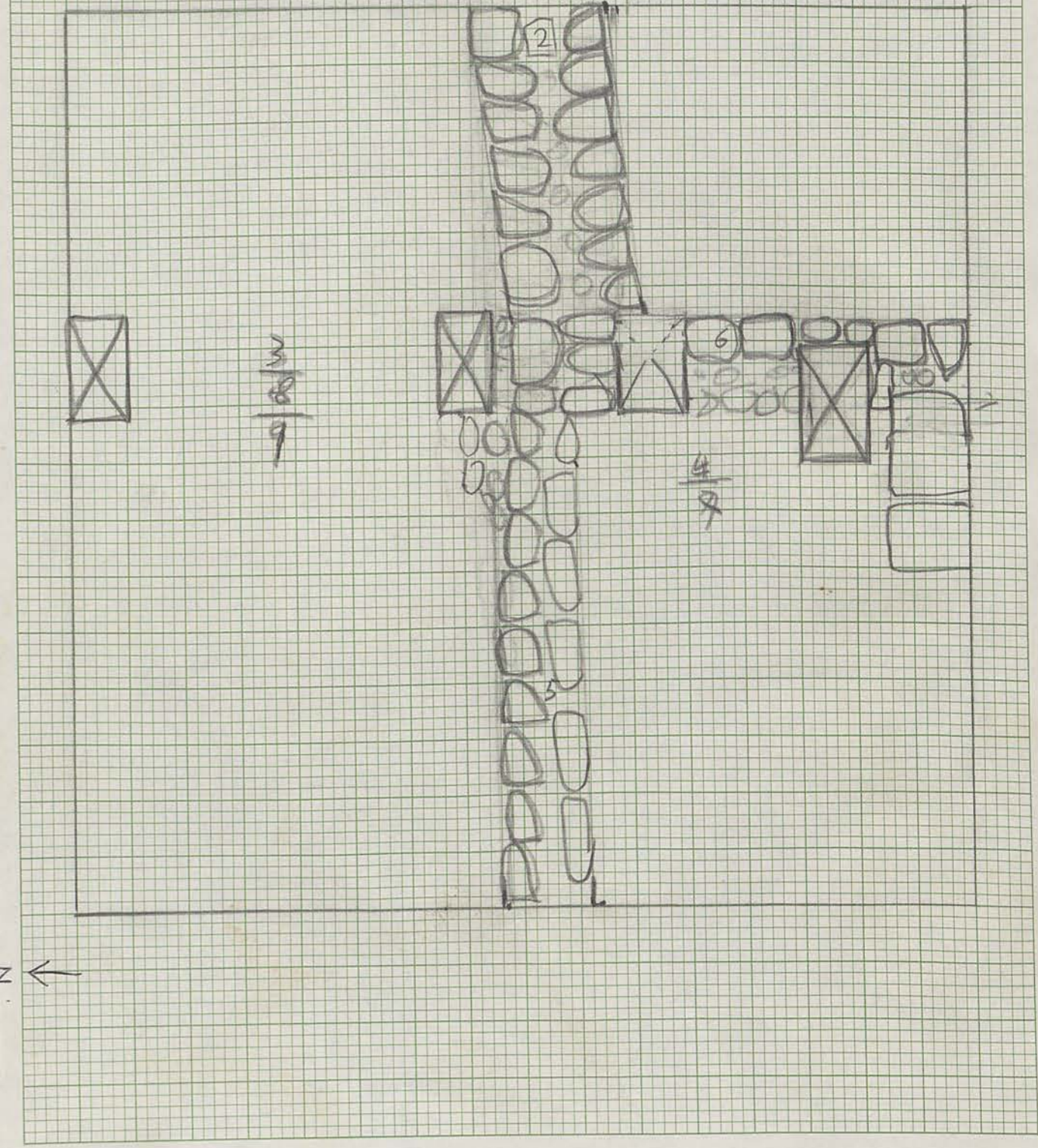
Handwritten notes in red ink at the top of the left page.



Handwritten Arabic text at the top right of the right page.

21-5-89
23-5-89

179 / 7

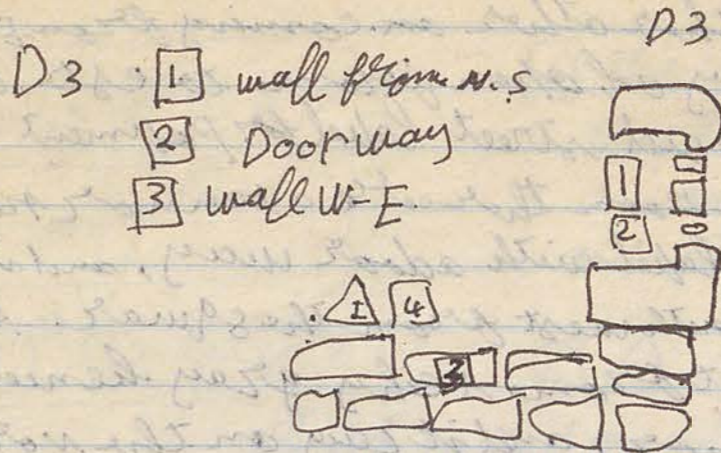


46 1610

5 X 5 TO THE CENTIMETER 18 X 24 CM.
KEUFFEL & ESSER CO. MADE IN U.S.A.

N

- 1- Hasan Yusuf - 2- Azeez H Jjou - 3- Maryam Abd - 4- Hadli
- 5- Hadli Tarboukha

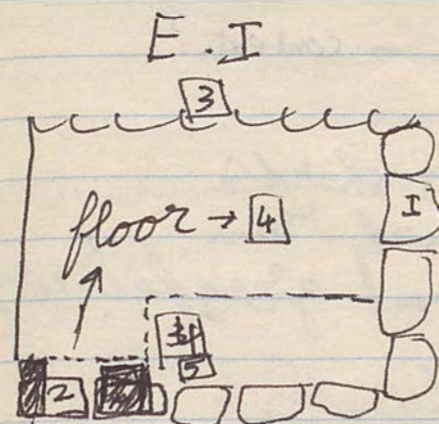


we start dig on this square cleaning and take out the soil through.

4: this locus consist of a soil soft its color achay gray and mixed with a stone and it has a some bone and pottery

4 I. this object consist of frame Boule pottery broken. and we found it on the corner west on the square on depth 1 m.

4 2 ring bronze of found on the same level object N.O.I. and near from it.



this year we continue the on this square. which consist from three walls. from the north and south and E. side.

and today continue the godown on the south square locus N.O.I.

5: has a lot from pottery and soft soil and this locus from stone full and locally and a lot of pottery

E.I 5 3 piece from lamp. 89.029

i.e. below floor 4 WM

3-4-89

some notes about square N.0 D3

this square consist of four walls one on the E st and the other are coming from E-W and door way of open from to est, on front of from out side street label for pavement

corner
paving

and in side the room there is a tannor not on same level as door on the same level with a door way, and it is in SW of square lay on the south west from the square. Also there are a pit from a city gray beneath the label tannor, and it lay on the north tannor. perhaps - this is a pit belong?

the tannor acinus. the bed rock appear beneath the pit gray.

pit

D3

3-4-89

Badday shards

3 - echinus Boul. intermed Mim))))))

2 fragment. Mim Bady shards))))

2 fragment, bars

29 Bady shards fragment

EI

3-4-89

- context?

5 - fragments Bar

8 - fragments Mim Bady shards

6 - echinus Boul. intermed Mim

3 - a fragments Koking Boul. gray fabric

120 - fragments Bady shards

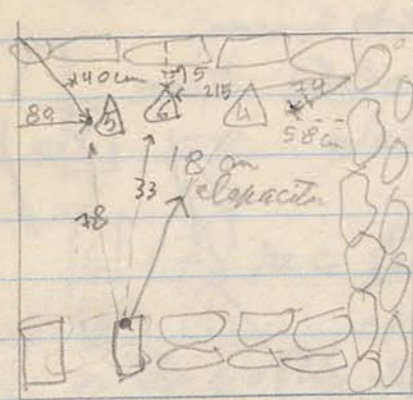
EI

4-4-89

Hasan yourself - 2. Azeem Hassan - 3. Maryam Aled - 4. Adhvaser

EI:

5 - 14 adli katherish



[6] this locus lay on the top of the floor locus N.0 [4] and it is consist of from a ful soil and a stone hollow. (stone hollow) = fumble

[6] [4]: this object from a piece plaster painted in a red color. we think this it was covered the wall.

Also I found some more from plaster painted pieces on the same corner. and it had some bones

[6] [3]: it consist of from a pair Bronze. it has handel. elapacta is 78 cm

[6] [6]: glass Bead? elapacta 33 cm

[6] [9] a piece from pottery found it inside plastic Bag, and decoration on it a man?

4-4-89

- 11 - fragment - echinus bowl interior rim
- 4 - fragment flaring outwards rim
- 2 - fragment Base
- 6 - fragment rim body shards
- 3 - fragment Handell own it painted a black color
- I - hope rim small own
- I - fragment a roof pottery
- 4 - fragments cooking bowl
- 100 - fragment - Body shards



5-4-89

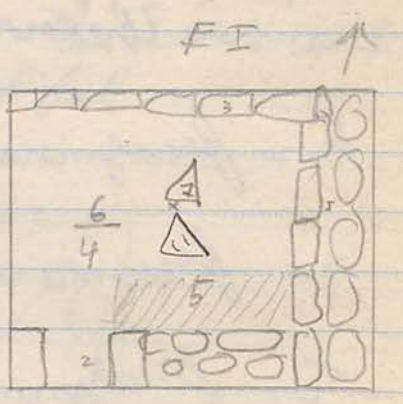
AB sent = Azong

E I.
 [6] we continue the work on this locus which consist of frame from a soil ful and stone fullem

[6] S. I plaster piece painted

[6] [7] piece ledge 89.003 figurine

[6] [11] : a piece from big room on the north the square there are some destroyed to floor



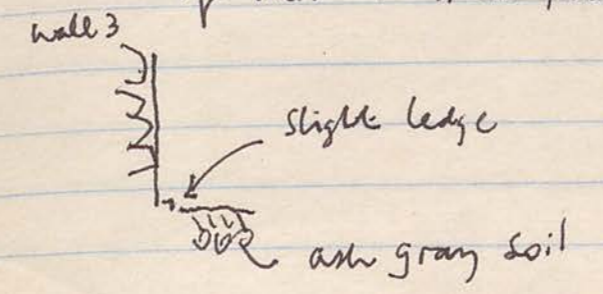
tumble Limestone floor destroyed: tumble from wall 3
 Lacus N.0 [4] this the destroyed coming from the stone fullem & from the wall lacus N.03
 But the floor which touched the wall from the north appeared very well like on the sawtek.
 * The Lacus N.0 [6] with a bottle over the floor as we see before consist of [from] stone fullem and soil. and this Lacus N.0 [6] destroyed some thing the floor N.0 [4] [6] is above limestone floor = [4]

Not 33

structure we notes from dis the square BD3 and EI about straction the floor of half the meter and they (helene period) make a bed and bed foundation a half meter or more [something] and full of pebbles and soil. and on the top they put a soft ash gray to make the room on the same level, and after that they put the floor from mud and plaster as in the saluar D3 and EI.))

filling of pebbles + soil
 ash

* At the foot of wall 3 a slight and low ledge of the stones constructing the wall appears to give the upper level of this limestone floor. or is this cut bedrock?



5-4-89 FI [6]

- 4 - fragment chinua Bowl intermed turn
- 17 - fragment Kim Badyshard Bowl some of them cooking Bowl
- 5 - fragment a chinua Bowl flaring outwards
- 3 - fragments - a base Bowl Body shards
- I - fragments a handll Bowl
- I - fragment a rough pottery
- 2 - fragment cooking Bowl
- I - fragment - Body shards red color out side and brown dark inside
- 132 - fragment Body shards

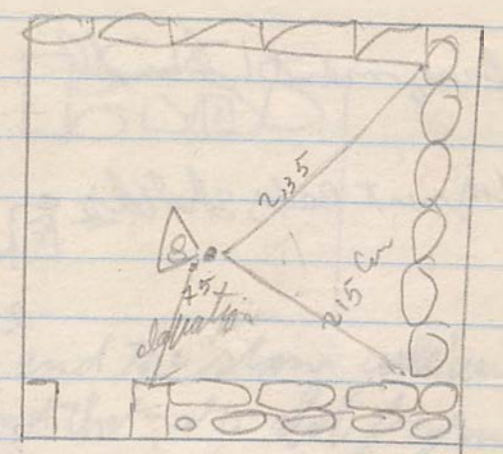
6-4-89

P Hassanyosq. 2. A Zerge + son 3. Hadleivaser 4. Hadle + others
E. maryam Alied.

FI

[6] Today we continued the work on this locus - with same - story fallen and soil full.

[6] S 2. Paese B'zomy



[6] 8 A head statue from mud found on the medial of square. This the head has a beard and mustache and coiffie. and perhaps the Artistic man. brown was of King on this citony
headless: 89.137

[6] S 3 piece from plaster

10.45 am. largish piece of (black) plaster in SE corner of this locus. i.e. plaster with black paint
At a depth of 1.17m from NE corner of trench and a distance of 1.89 from that same point. I keep it separate and put it in plaster sample box.

8-4-89 - EI - Boulck

6 - fragment - echinus bowl interior rim

1 - fragment - echinus bowl flaring outwards

6 - fragment - Bedu shards - rim

5 - fragment Bas bowl

3 - fragment Bedu shards: 1. nice decoration
2. a red color
3. cocking bowl

124 - fragment Bedu shards

3 - fragment handel



9-4-89

- 1. Hadlie rasser - 2. Hadlie tarhousih - A neege Hasou
- 4. Hasan yousef - 5. Maryam Aled.

EI [6] today we conteneou cleaning the locus
N.O. [6] which consist of soil but a loaf
the flour. *floor* *above*

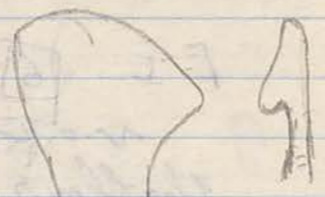
[7] this cow lay on the south squar, and
we conteneou the work on it, it is send in it
mor from stone boulden,
the Boulck wich lay on the south squar N.O. EI
on north squar N.O. D3. it is the same
locus N.O. [7] gam starting tack out it
and it is a lot from stone boulden in it.
fallen

[7] S [4] a piece from glasses found it on
the Boulck.

Jk 9-4-89 - EI [7]

2 fragments echinus bowl interior rim

8 fragments body shards rim



2 fragments echinus bowl flaring outwards

1 fragment Base

1 fragment Body shards 1 - a piece from glaze

red color and thin

1 fragment a hand bowl



53 - Body shards

EI - 9-4-89 - [6]

5 fragments echinus bowl interior rim

2 fragments echinus bowl flaring

1 fragment Body shards rim

5 fragments Body shards red color inside and dark color outside with decoration with lines

1 fragment Base Body shards

5 fragments Body shards cooking bowl

84 - fragments Body shards

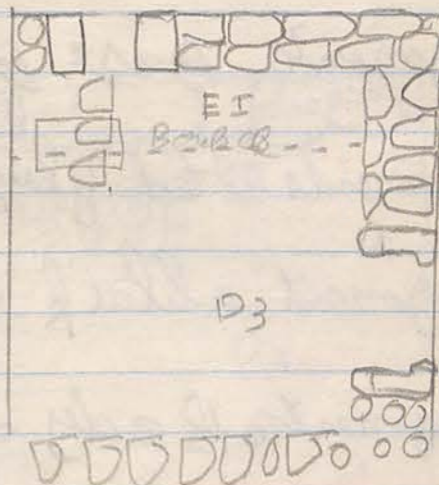
10-4-89

Hasan Yousof - 2. Aqeel Haison - 3. Hedlinasser - 4. Hadli tarhorsh
5 - Maryam A. Hed.

EI

[7] today we continue the work on this locus which consist of
from the 13 out of

there are a white stone fallen on the south door way
it is long 70 cm - width 50 cm - it is the same long
and width to stone
door way.



10-4-89. E I - [7]

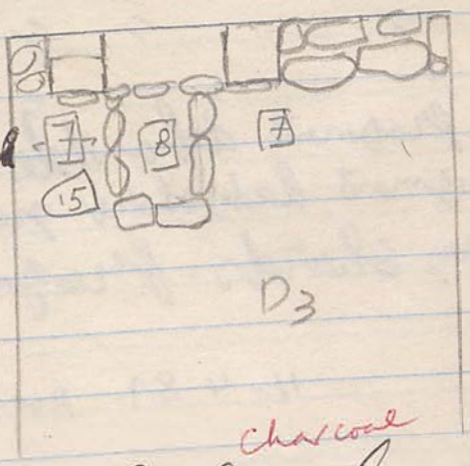
- 6- fragment rim Body shards
- I fragment mortarum
- I fragment echinus rim
- I fragment whole plate
- 4- fragments Base Body shards
- 2- fragments red glazy
- I fragment a black gray - out sid and insid
- 10I- fragments Body shards

11-4-89
 1- Hsanjousf - 2 A Zeeye Hason - 3- Hadlie tothoush & Maryim
 A had - 5- Hadlie Vasser.

[7] E I Baulk
 today we continue the work on this load it
 seemed the soil ful and stone full on.

- [7] S (5) some ~~ch~~all - charcoal - found on the south square E I in the Baulk.
- [7] (5) small jar

[8] this load consist of ~~frag~~ stones similar tomp and in lay
 in sid a room N. 0 I which has a man door way on the street



lies inside Room 1

- [8] S (6) some ~~co~~ charcoal and seeds
- [8] S (7) some Bone

and it seemed the load N. 0 [8] attached the ston with but four supposed the northern wall to the Room N. 0 I and
 Room N. 0 2 - and it seemed the wall north it is tied with the E. side wall in Room N. 0 I - Also the wall northern is ~~com~~ partner between the ~~Room~~ two rooms - it is a strange to the load N. 0 [8] lay on the medal Room N. 0 I. but and the shop tak has flour
 I said perhaps Room N. 0 I a court yard? where ~~been~~ when I open a new square on the west we must know.

Room 1 = a courtyard?
 Excavation of square on W of Room 1 (= D3) might give the answer. P. 6

E I 11-4-89

Room No. I [7]

- 9 - 8 fragments rim body sherds
- 5 - fragments rim echinus into rim
- I - fragment rim mortarium
- I - fragment fish-plate
- 3 - fragment rim hole plate
- 4 - fragment Base
- 6 - fragment body sherds for cooking
- I - " " " paint in black out and inside
- I - " " " " red color
- I - fragment a handle straight
- I - fragment body sherds paint in green color out and inside
- 140 - body sherds - fragments

11-4-89 Room No. I [8]

- 1 - fragment echinus rim red glaze
- 1 - fragment a fish plate rim
- 30 - fragments Body sherds

11-4-89 - E I Bank - Baston

- 1 - fragment rim echinus
- 2 - fragment body sherds red glaze
- 8 - fragments " " "

12-4-89

9

Hasan yasef - 4 yeese H. son - 3 Hadhe tarhousih - marusam alad
Hadhe vasser.

E I -

[5] this locus lay and the south of square - which is consist of a palatial pile and soil, stone fallen - so we today continue the work on it

[5] S (8) peice from B. 100 yd

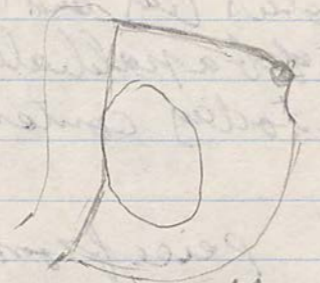
12-4-89 EI 5

4- fragment Rim Body sherd

I - " " echinus plate

I - " Base amphora

I - handle plate glaze red



24- fragment Body sherd

EA begins

W 7 EI

10

12-4-89

20. E4

I we start dig near square today after noon. with lay on the F west square EI, and a lot of stone fallen on the surface and grassy.

II 10" This object is Coin B Bronze found on the south square depth 10 cm

89.044

13-4-89

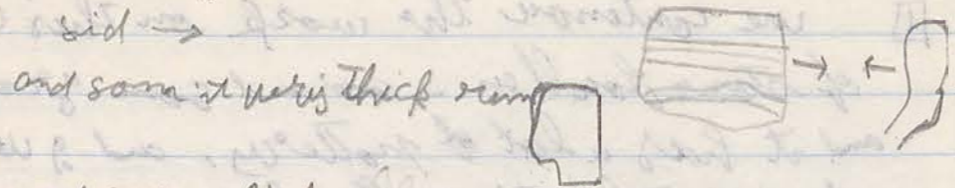
E 4 -

[] we continue the work on this locus. a lot
 of stone boulders - and some grass in it,
 and it had a lot of pottery, and a ~~great~~ lot of wheat
 sta. ~~pottery~~ to walls - lower doorways
 on the West to square.

[] we went to the west side of the
 [] the object is to find out
 [] the south side of the
 []

13-4-89 - E4

7 - fragment Badly shards some of them had decoration out



1 - fragment rim fish-plate

1 - " " mortarium

1 - " " whole plate

2 - " " echinus plate

7 - " Badly shards Base

2 - fragment handle Badly shards

2 - fragments Badly shards a red couler out and in sed

92 - fragment Badly shards

14-4-89

- Hasen - 2 A Zage - 3 Maryam

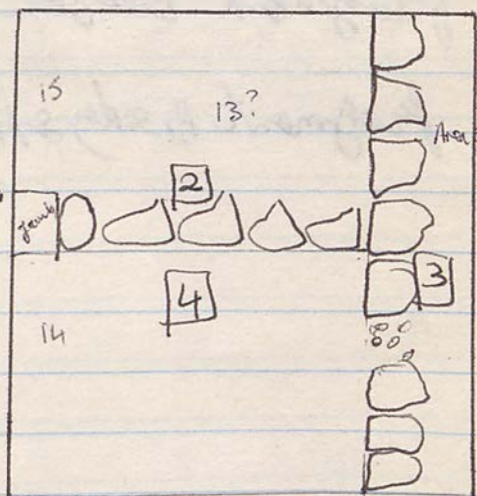
4 - Hadli - 5 - Hadli

E4

[2] This locus consist of a wall stone coming from west to E ste, and it facied the door way out sid the squar. Also this the wall partion the squar to the low part,

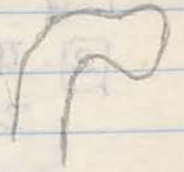
[3] This locus consist of a wall stone coming from north to south and it cross the the locus N.0 2 and on the south corner E ste the it is second southern weep.

[4] This locus consist of ~~from~~ a soil and a founlon stone, it is couler Brown soil, and a robot and it is a lot of pottery. it is on the south of squar ((see the map))



15-4-89 EH [4]

3 fragments rim Body sherd



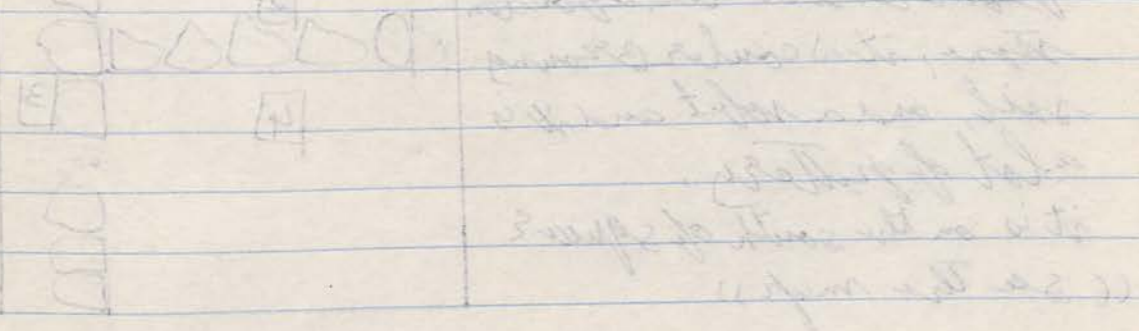
1 fragment rim acherus

3 fragments handel - some of them Amphora (dehl hand)

1 fragment alblack glaze

1 fragment Base

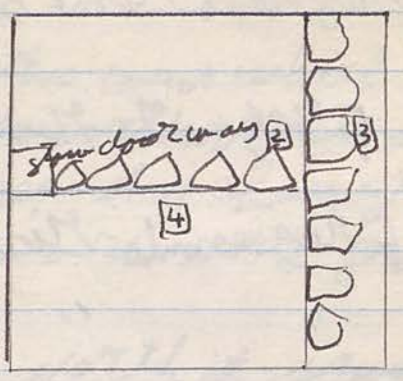
60 fragment Body sherd



16-4-89 1 - Hasan 24 yet 3 - narrow - Halife - Hölke

E 4-

[4]: today we continue the work on this level. Also appear very few floor stone, and a lot of pottery.



[4] S. 9: a piece from plaster wall, a red color

Plaster - red

16-4-89 E4 (4)

6- fragments rim body shards

2- fragments rim whole bowl

1- fragments rim a chinas

1- " " a fish plate

2- fragments base one it is gray red color

1- fragment fish plate red glaze from outside and from inside its some circular decoration



1- fragment red color glaze

1- fragment red color glaze inside, outside decorated by 2 parallel lines

2- fragment cooking bowl

116- fragment body shards

17-4-89 -

14

1- Hasan - 2- A Zeze - 3- Maryem - 4- Hadli - Hadli

E4

[4]: we continue the work on this locus which seemed a stone hollow - and on the north of this locus there are the soil it has second a clay gray

[4] (10) BONE found on the north from locus

[5]: this locus lay on the north it square - and it consist of from - a door way and a stone hollow the soil it second - soft and B ground.

[4] (12) : Bead, found on the E side square
89.335

17-4-89 E4- [4]

3- fragments rim Body shards

1- fragment rim a flash plate

1- " " marcatium

1- fragment shard a black glaze out side decorated by lion parallel

2- fragments body shard plate

2- fragments Base painted a red color

1- fragment handle twisted

1- fragment handle

12-8- fragments Body shards

17-4-89 E4 [5]

1- fragment rim marcatium

3- fragments rim Body shards

1- fragment rim with handle

2- " " a hot plate

1- " " schinus

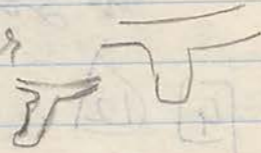
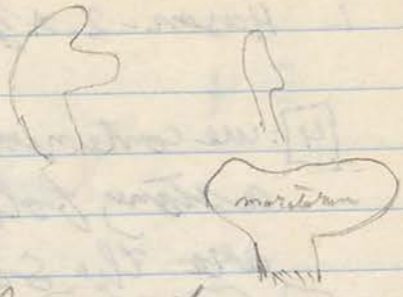
1- fragment a handle

1- fragment Base anquearium

5- " " Body shards

1- fragment Body shards cooking

- a lot from Body shards



18-4-89

- Hasan yourself - 2- A yezge Hassen - Maryem A Bed - 15

4- Hadhi Farhoutho - Hadhi vaser -

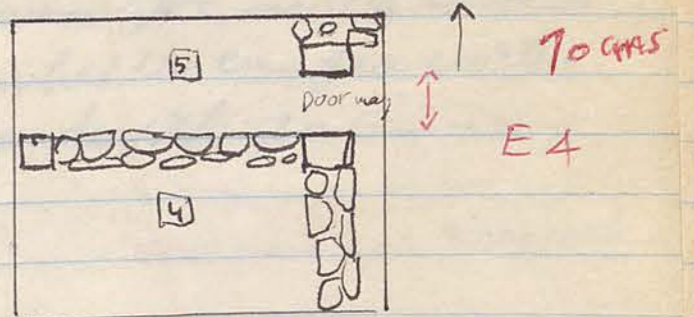
EA [5]

E4

We continue the work on this locus we which lay on the north the square and it's steel stone hollow - on the soil soft, and the doot way has a rippled more until length 70 cm

[5] s (11) some Bone

[5] s (12) plaster



[5] [13] fragments from jar the rim nearly complete, and beneath the see there are two letters B-A

89.525
graffito!

17-4-89 E4- [4]

3- fragments rim Body shards

1- fragment rim a flash plate

1- " " marcatium

1- fragment shard a black glaze out side decorated by lion parallel

2- fragments body shard plate

2- fragments Base painted a red color

1- fragment handle twisted

1- fragment handle

128- fragments Body shards

17-4-89 E4 [5]

1- fragment rim marcatium

3- fragments rim Body shards

1- fragment rim with handle

2- " " a hot plate

1- " " schinas

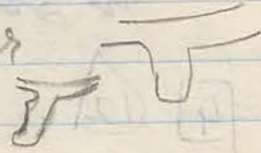
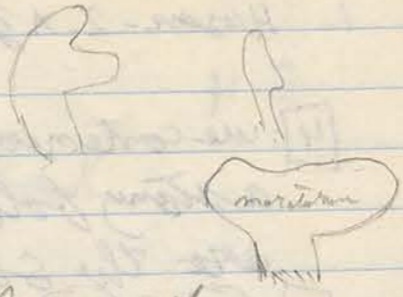
1- fragment a handle

1- fragment Base anquentarium

5- " " Body shards

1- fragment Body shards cooking

- a lot from Body shards



18-4-89

- Hasan yourself - 2 - A yezje Haysou - Maryem A Bed - 15

4- Hadli Farhoutho - Hadhivaser -

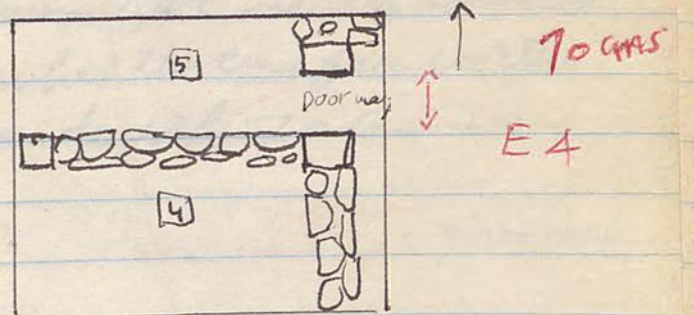
E4

EA [5]

We contemore the work on this locus we huich Lay on the north the squar. and it's stel stone hollow - on the soil soft. and the doot view has a riped more on tel length 70 cm

[5] s (11) some Bone

[5] s (12) plaster



[5] 13 fragments from jar the rim nearly compleat. and beneath the see there are ten letters B-A

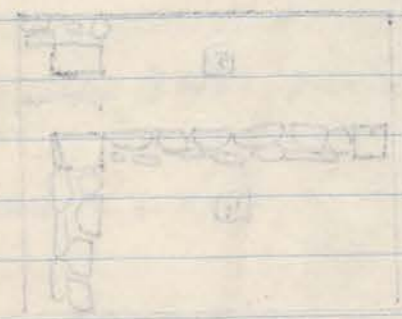
89.525
graffito!

18-4-89

E4

[5]

- 7- fragments rim Body shirds
- 6- " " echinus))
- 2 fragments " a hol plate
- 4 fragment Base body shirds
- 5 fragments handles " =
- 2- fragments Body shirds red glaze
- 4- fragments Body shirds cooking Bowl
- lot fragments Body shirds



fragments from the room
 with fragments and plaster
 A-B-C-D-E-F-G-H-I-J-K-L-M-N-O-P-Q-R-S-T-U-V-W-X-Y-Z

19-4-89

E4

- 1-Hasan Tousef 2- Ayeeze Hassan 3- Maryam A had 4- Hadli
- 5- Hadlwaser 6- Taleh Hassan

E4

[5] today we continue the work on this locus and the soil appear more soft and and had take out all the stone of
 floor and appeared 70 cm length from the stone
 door way. and 3 trace from locus N. [2] in depth
 60 cm. Also it has a lot of fine pottery, and there are some
 ash grey soil on front of the door way - and some near western
 [5] [14] fragments medium jar netly complet
 but it found attached the end of the
 stone in door way. on depth 70 cm

[5] s(13) iron nail? iron nail = arrow head.

[5] s(14) BONE

E4 [4] we continue the work on this locus with
 seemd very soft soil and it has a lot from
 pottery and a lot from well plaster

[4] s(15) plaster

level floor

[6] This locus is coming beneath locus N. [5]
 and it is consist of a level floor which has
 two part from red & ash grey, there two parts
 lay near the eastern door way and the other
 near the west door way

ashy?
 ash grey

JK. 19.4-89 E4 [4]

- 9- fragments of rim Body shards
- 1 fragment rim " = cooking Bowl
- 3 fragments head " "
- 7- " rim echinus Bowl
- 1- fragment rim flaring Bowl
- 12- fragments Base Body shards
- 1- fragment Base ornamentum
- 1- fragment Base toe
- 1- fragment gray black out side and inside, Body shards
- 1- " Body shards glasse a green color out side an inside
- 1- fragment Body shards & gauged
- 3- fragments Body shards cooking Bowl a lot of Body shards

19-4-89 E4 [5]

- 7- fragments of Rim Body shards
- 3- " " " maratorium
- 3 " " " a hal plate
- 1- fragment neck with two handle
- 5 fragments Base Body shards
- 1- fragment a black gray inside and out side
- 1- " a black glaze " " " "
- fragments Body shards

19-4-89 E4 [6]

- 3- fragments rim Body shards
- 1- fragment rim and plate
- 1- " Base circular
- 4- fragments cooking Bowl Body shards
- 1- fragment red glaze Body shards Body shards

E4 20-4-89

1- Hasen- 2- A Zege 3- maysen- 4 Hadli- 5 Hadli- 6- telek

[6] Was today we continue the work on this locus which consist of a floor level and it had a lot of pottery.

[7] This locus consist of a pit and it width 60 cm, and long 200 cm it is pavement on top of it.

[7] Bone s. (16) Bone

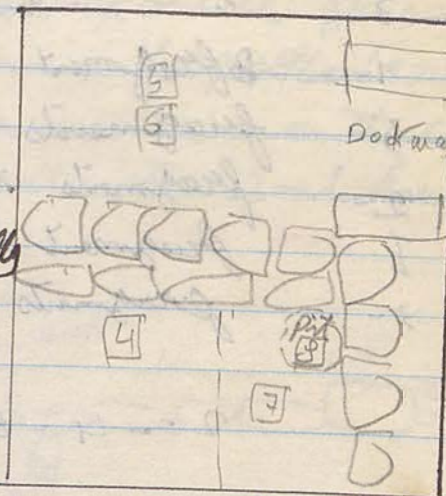
[8] This locus consist of a pit and inside it a ^{ashy} gray and a lot of pottery and Bone.

[8] s. (17) Bone

[7] s. (18) circular

[7] s. (19) plaster

[7] s. (20) iron



20-4-89- E4 - [7]

- 2 - fragments of rim to fish plate
- 3 - " " " " " " " "
- 3 - " " " " " " " "
- 3 - " " " " " " " "
- 1 - fragment of Base and glaze
- 5 - fragments of Base Body shards
- 2 - fragments to handle Body shards
- 1 - fragment to handle spiral
- 3 - fragments cooking Bowl

20-4-89 E4 [6]

- 2 - fragments rim marcatium
- 3 - " " " " " " " "
- 1 - fragment " " " " " " " "
- 2 - fragments handle to Body shards
- 1 - fragment Base " " " "
- a lot of fragment Body shards

20-4-89 E4 [8]

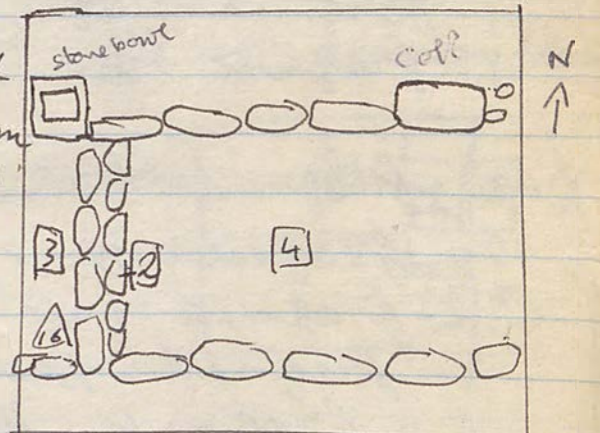
- 1 - fragment rim with neck. Body shards
- 2 - fragment " " " " " " " "
- 2 - fragment handle Body shards
- 4 - fragments Base Body shards
- 1 - fragment Base to two Body shards

22-4-89- 1- A Zeyge H'sou - Taleh H'sou 3 maysan & tal

4- Hadli vasez - Hadli talhoush - 6- Bedar H'sou

D6 [1]: Today we open start dig a new square which lay on the south square E4 - and the locus N01 on the surface seemd very stony and grassy. So I took out the grass and cleaning between the stone and a perfect a nice column frag. from Colom long 65 cm and it is on the center of the (prohe). also there are stone Bowl handle was in it leaf like square. stone bowl whole?

P6 [2] This locus consist of a stone wall coming from the north to south and attached the Bowl stone



D6 [3] This locus lay on the west square and west locus N02 - it is soft soil

[3] & [16] a fragment of bronze needle. needle

wall of re-used masonry.

24-4-89 E4- [6] Boulk (Est) Bag 2

3 fragments rim Body shards (it's complete rim jar)

1- Base complete toe Body shards

E4 [6] Boulk (Est) 24-4-89

4 fragments Base Body shards

2 fragment rim hol plate

2- " " echinus, plate

1- fragment rim flaring Body shards

5 fragments Body shards cooking Bowl

24-4-89 D6- [4] Pattery

1- fragment rim echinus, plate

2 fragments rim flaring Body shards

1 fragment rim green glaze plate

3 fragments rim Body shards

1- Complete Base circular Body shards

1- " " " " (proper three parts)

5- fragments Base Body shards

1- fragment handel with rim with neck
it has lip jug

1- fragment handel with neck (jug)

2- fragments handel Body shards

1- fragment Body shards cooking Bowl
a lot from Body shards.

24-4-89-E4 [5] Bag 3

1- fragment rim with neck Body shards

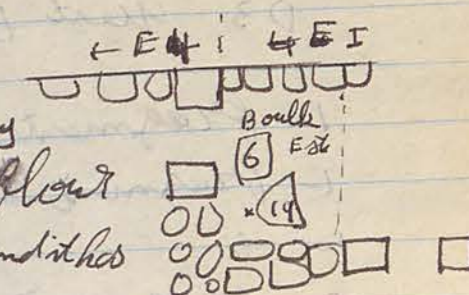
2- Base or complete (circular) Body shards

24-4-89-E4 [6] Bag 4

this has consist of a cooking jar with four handel and fragments
from rim with neck and flat base (circumferent)

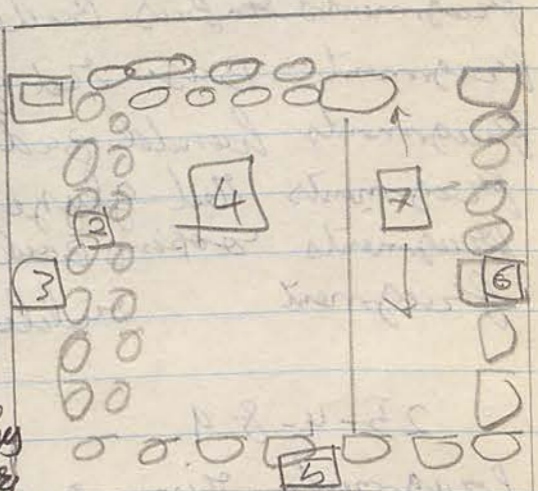
25-4-89
1- Azeez-taleh 3- Bader 4- Maryem 5- Adinasir-Hadli

E4 [6] Boulk ^{Est} we continue the work on this locus which lay above the layer flour and it is Est Boulk and it has a lot pottery.
E4 [6] B^o Est Boulk wheat Pattery (circular) loom weight? circular.



D6: [6] This locus consist of the wall stone coming from the north to south to north and it has a lot pottery

D6: [7] This locus consist of a soil and it is beneath locus n.o [4] which a layer flour. Also this locus very soft and its color is grey, and a lot of pottery it has. and a lot of Bone



D6 [7] s. (22) Bone

D3 [I] West Boulk: today we continue the work on this square (room no 1) and follow the wall which coming from E-W.

D3 [II] West Boulk s. (23) Bone

25-4-89

D3 West Bank [1]

- 1 - fragment rim echinus plate
- 1 - fragment rim Baday shirds
- 1 - " " whole plat
- 3 - fragments cooking Bowl (Baday shirds)

25-4-89 - D6 - [7]

- 2 - fragments ~~echinus~~ rim echinus plate
- 2 - fragments rim Baday shirds *body shirds*
- 1 - ~~rim~~ fragment rim complet with neck - engatatum small - *base*
- 5 fragments ~~Bas~~ Baday shirds
- 1 - fragment Bas red ~~gray~~ glaze
- 2 fragments handel Baday shirds
- 2 fragments red glaze Baday shirds
- 2 fragments cooking Bowl Baday shirds
- 1 - fragment ribbed Baday shirds

25-4-89

D6 - [6]

- 5 - fragments rim ~~body shirds~~ echinus plate
- 2 fragments rim Baday shirds
- 4 - fragments Bas Baday shirds (circal)
- 1 - fragment Bas toe Baday shirds
- 1 - fragment handel " "
- 1 - fragment cooking Bowl Baday shirds

25-4-89

E4

[6] West Bank

- 1 - fragment rim Baday shirds
- 1 - fragment rim hand bowl

26-4-89

All the work men (coming)

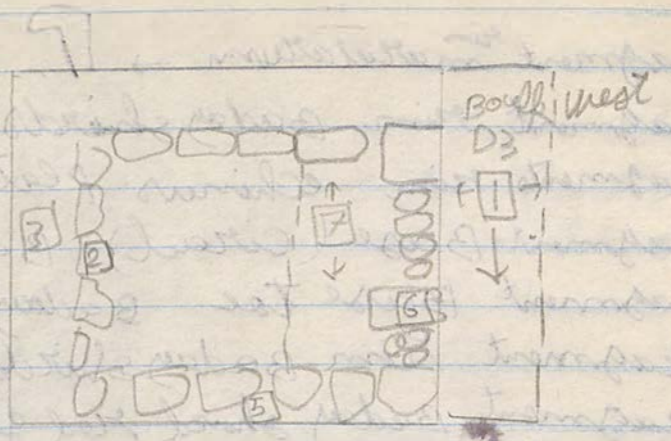
D6 - [7] we continue the work on this locus which lay on the West Locus N. of [5], and second the soil hard, and a lot pottery.
 We have just have day work and stop because the Monday very stormy.

wind

26.4-89 D 6. [7]

- 3- fragments (echinus rim) Plat.
- 4- fragments rim Baday shields
- 7- " Base " "
- 2- " rim meretrum Baday shields
- 2- fragments handel Baday shields
- 4- " Baday shields coping bowl
- 1- fragment Baday shields alulak glasse

27-4-89 23
1-4 Zeeb - 2- taleh - 3- Bader 4 Maryem - 5 Hadli - 6- Hadli



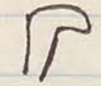

D 6 [7] Today we continue the work on this locus which appear today more herodiana probably
paler? probably? ✓

D 3 [1] West Bouff. We continue the work on this locus which consist of a west Bouff or in square D 3. and it is a paved the locus n. o. [6] which consist of a wall stone on square D 6. and it is appeared the door may ~~be~~ were will. Bob Bate in the last period it is shiat ~~this~~ that the doorway shut


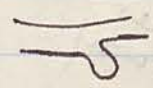
D 3 [1] West Bouff S: (24) Bronze

D 6 [7] S: (25) Bronze (vial) S

27-4-89 D3 [1] West Baulk

- 1- fragment rim marataurn → 
- 1- fragment rim Baday shields 
- 5- fragments rim echinus plate
- 3 fragment Base (Circular) Baday shields
- 1- fragment Base toe Baday (Shield)
- 1- fragment Rim Baday shields for cooking Bowl
- 1- fragment Baday shield red glazing

27-4-89- D6- [7]

- 3- fragments rim echinus (plate)
- 3- " " Baday shields → 
- 7- fragments rim flaring (plate)
- 1- fragment rim abut (plate)
- 7 fragment Base (Baday shields) 
- 2 fragments handel Baday shields
- 4 fragments cooking bowl Baday shields

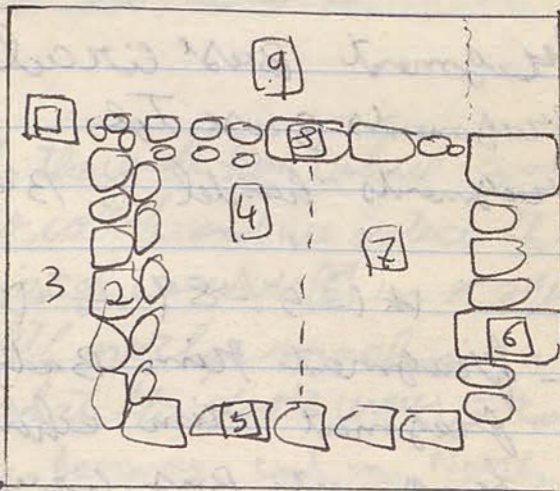
1-5-89

24

1- A Zeeme - talch - 3- Bader - 4 Maryem Hadli - 6- Hadli

D6 [8] This locus consist of stone wall coming from W-E- , and this wall is so has construction from top trace from stone, it is on the middle it a piece from column, perhaps reused it in building, suggest this the wall built on the last period, with the walls No-2.

in middle
a frag. of
column
re-used
built



D6

D6 [9] This locus lies on the north corner, and it is consist of the fallen stone and soil.

D3: [1] West Baulk : Today we continue the work on this locus and the soil appear very soft

D3 [1] [20] fragment figurine (head) woman.

89.439

figurine

89.439

Cat. no-21.

Head of young male

1-5-89

D6 [9]

4 fragments rim echinus. one of them very thick

3. fragment rim shallow plate //

9. fragments rim Baduy shards

8. fragment Base circular Baduy shards

3. fragments Base Top Baduy shards

4. fragments handel Baduy shards

1-5-89 - D3 [1] West Boule

1. fragment rim Baduy shards → ↗

1. fragment rim echinus plate ↗

2. fragments Base circular Baduy shards

1. fragment handel Baduy shards

2. fragment red glass Baduy shards

2-5-89

25

Azeq - 2. taleh - 3. Bader - 4. Maryem - Hadli - Hadli

D6 [9] We continue the work on this road which lay on the north square and the soil is second & clay & gray. Also there are Boul stone on the middle ^{ashy}

D6 [9] [21] fragment lamp has picture. 89.437

D3 [1] West Boule.
We are following the the wall from which coming from the the south to north and we note the well ~~which~~ which consist of locust [6] in a square D6 or cutting on the north perhaps making it door way after that the door way from the south. - later doorway cut in North

D6 [7] [22] fragment from Fegaween found on the south square. = below floor 4? ^{or on " "} 89.423 = A

D3 [1] West Boule [23] fragment glass 89.424 = glass rod. (in D3)

2-5-89 D6 [9]

- 1- fragment rim echinus (a plate)
- 1- " " a hol (" ")
- 1- fragment rim (a plate)
- 2- fragment rim Body sherds
- 13- fragments Base Body sherds
- 1- fragment Bas green glyse Body sherds
- 1- fragment Base red glyse " "
- 1- fragment handel Body sherds
- 1- fragment Body sherds Brown painted
- alot of fragments Body sherds

2-5-89 D3 [1] West Bank

- 3- fragments echinus rims plate
- 1- fragment rim hol plate
- 1- " " flary (plate)
- 2- fragments rims Body sherds → P P
- 2- fragments Base Circal (Body sherds)
- 1- fragment Bas toe Body sherds
- 1- fragment handel green glyse Amphora
- 1- complet Bas Circal
- 2- fragments Body sherds red glyse
- 7- fragments cooking Bowl

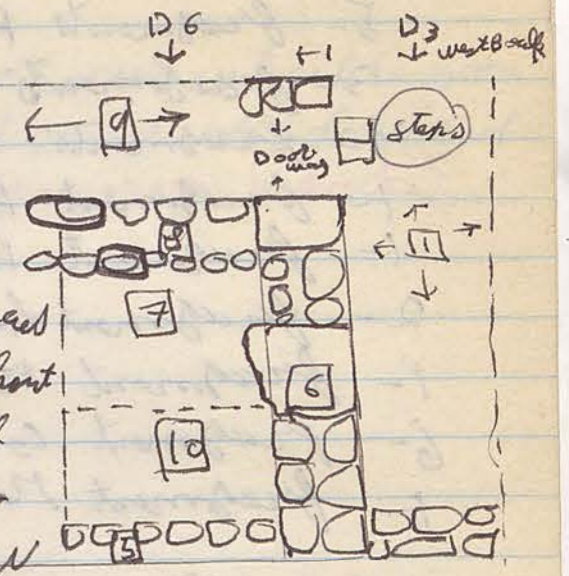
3-5-89

Azzen - 2 tale - Bader - 4 - mayem - 5 - Hadli - Hadli ²⁶

D6 [10]

divided into two: 7 = a spit

this locus lay on the south locus
 N. of A and B beneath it from the
 south a diped locus N. of B to
 town and on the south part
 N. of A and go down, q whint
 to q directly to an original
 doorway to Room N. 0 on
 from west and it has been



D6 [10] S: 21 Bone

*

D3 [1] West Bank

we continue the work on this locus which seem
 alot of stone fallen & to get out, and seem wall
 which separat between Room N. 0 I and the courtyard
 it very well. Also a pier this wall had cut cut
 from the north - to mark doorway after they
 ate shut the canon doorway, (see the map)

7 is floor use no = 4

D6 [10] also the locus N. of [10] consist of foundation
 to locus N. of [7] which it is floor level so
 locus N. of [10] is beneath locus N. of [7] and above
 the Bedrock.

D3 [1] West Bank S: 22 piece from plaster

D6 [10] S: 24 stone Blad.

D3 [1] West Bank 25 Basalt stone. ^{Stone waste? has alt stone}

* : Also locus N. of [10] is consist of floor level, but
 it is return to courtyard. locus N. of [4] floor
 level for the second period but the locus
 N. of [10] floor level have the first period.

4: sec
10: perm.

3-5-89

D3 [1] West Bank

- 5- fragments Rims echinus plate
- 3- fragments Rims Sahol plate
- 3- fragments Base Baday sherds
- 1- fragment Base red glyze (has a small hole)
- 1- fragment Base Toe Baday sherds
- 2- fragment handel Baday sherds
- 1- fragment red glyze Baday Baday sherds
- 6- fragment cooking bowl Baday sherds
- 1- fragment Rim Baday sherds →

3-5-89 D6? [10]?

6- fragments Rims Baday sherds

- 6- fragments Rims echinus plate
- 3- fragments Base handel Baday sherds
- 6- fragments Base Baday sherds (circul Bas)
- 2- fragments Base Toe Baday sherds
- 4- fragments cooking Baday sherd
- 3- fragments Tannour
- 1- fragment red glyze Baday sherds

ESA?

Lower fill

4-5-89

27

A Zeege - 2- Taleh - 3- Badel - 4- Maryem - 5- Hadli - 6- Halk

D6- [10]

We continue the work on this Locid, which lies on the south south square - and seemed very hard and the soil red color - Did they reach bedrock?

D3: [1] West Bank:

We continue the work on this Bank from the north and appeared the door may very well and the north wall in the room No. I.

D3 [1] S (23) Piece from B Zeege

D3 [1] S (24) Bone

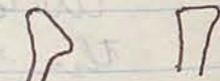
D6. [10] S: (25) Piece from iron?


D6. [10] [26] Basalt Stone

4-5-89

D6 [10]

3 fragments Rims echevus plat

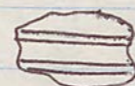
6- fragments Rims Baday sherds. 

2- fragments Base Baday sherds 

1- handel complete Baday sherds 

1- fragment

1- fragment cooking Bowl

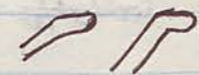
2- fragments red glazy gased  ESA.

4-5-89

D3 [1] West Bank

3- fragments Rims Baday sherds

1- fragment Rim echevus plate

2- fragments a shallow plat 

1- fragment Base Baday sherds

2- fragment Baday sherds cooking Bowl

8-5-89

4 Zeege - 2. taleh - 3. Bader - 4. Margem - Hadli - Had

E 4 [1] South Bank

today we start to take out the Bowl which lay on the south square E 4 - and get out about 50m boulders.

E 4 [1] south Bank [27] iron vile nail

Begin on 179/5

179/5

[1] This stone lay on the north square E 4 today we starting dig on it. the surface is grassy - and a little pottery.

a little pottery

8-5-89

E 4 []

S. Baulk

8- fragments Rim Baday shards. R P B

2- fragments Rim flaring plate

1- fragment Rim Baday shard (cooking bowl)

1- fragment mouth for jar

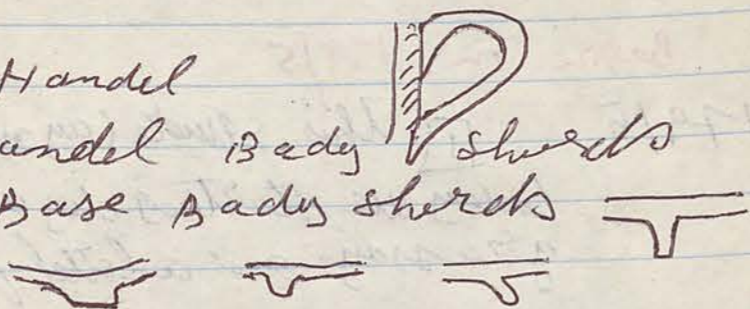
2- fragments Rim echinus plate

1- fragment Rim maritimum Baday shards

1- fragments Handel

2- fragments Handel Baday shards

13- fragments Base Baday shards



8-5-89

17915

[] Patera

2 fragments Rim Baday shards

1- fragment Rim flaring plate →

1- fragment Rim echinus plate

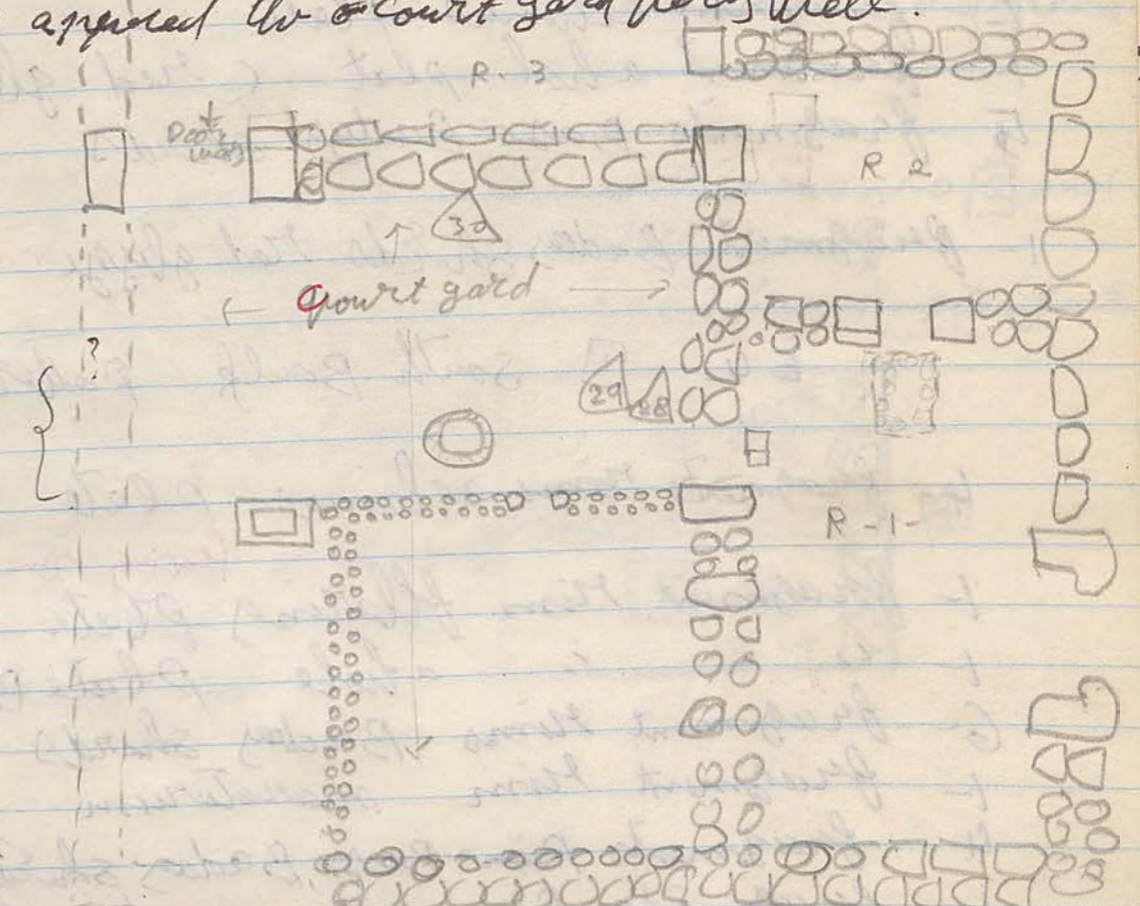
3- fragments Base Baday shards (cereal)

9-5-89

1- Azeb - 2- taleh - Baday - 4- marjem - 5- Halli - Halin

E 4 - [] S. Baulk

Today we continue the work on this Baulk and it is apparent the court yard very well.



- E 4 [] south Baulk (28) lamp complete? 89.534
- E 4 [] south Baulk (29) fragment figo stem figurine lamp animal 89.549 head of animal.

1017915 [] we continue the work on this locality which seemed very stony and the soil soft and its color is brown.

E 4 - [] (30) fragment lamp

E 4 [] S: (26) a piece from plate

9-5-89 17915 [1]

- 6 - fragments Rims Baday Shards
- 2 - fragments Rims maratarum
- 1 - fragment echinus plate
- 1 - fragment whole plate (red glaze)
- 5 - fragments Base Baday Shards
- 1 - fragment Baday Shards red glaze v. glaze

E4. [1] South Bank pottery

- 4 - fragments Rims echinus plate
- 1 - fragment Rims flaring plate *flaring rim*
- 1 - " " whole plate Body Shards
- 6 - fragment Rims Baday Shards
- 1 - fragment Rim maratarum
- 4 - fragments Rims Base Baday Shards
- 1 - fragments Base atoe Baday Shards
- 1 - fragment cooking dish Baday Shards *Body Shards*

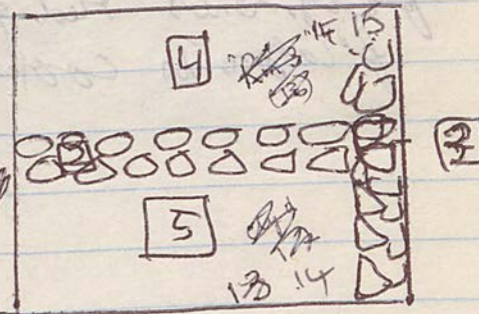
10-5-89

17915 [2] This locus consist of a wall stone coming from W-E-W

[3] This locus consist of a wall stone coming from S-N- and crossing the locus N. of [2] which is a wall stone coming from E-W

[4] This locus lay on the north locus N. of [2] and it is a reach until the North Bank and it is a soil soft and a lot from *much tumble* stone fouls

17915 [5] This locus lay on the south locus N. of [2] which consist of the wall stone which coming from E-W

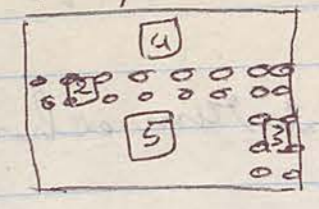


10-5-89
179/5 [4]

- 6- fragment rims Baday sherds
- 5- fragments Rims Echimus plat
- 2- fragments Rims shallow plat
- 1- fragment rim ahod plate
- 1- " " flaring → 9
- 1- fragments ~~rim~~ handel Baday sherds
- 5- fragments Base Baday sherds
- 1- fragment tannor pottery
- 2- fragments red glaze Baday sherds
- 2- fragments cooking Bowl

11-5-89- (CAL workmen)

179/5 [4]
9 was seek



179/5



a piece from so pottery Red glaze
glaze and geyged



CSA-

11-5-89 - 179/5 [4]

1- fragment rim echinus plat

2- fragments Base Baday sherds

~~5 fragments~~

179/5 [5]

5- fragments rim Baday sherds

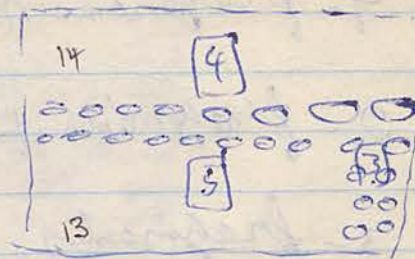
1- fragment rim echinus plate

1- fragment rim with handle Baday sherds

1- fragment Base Baday sherds

13/5-89

179/5 [5]



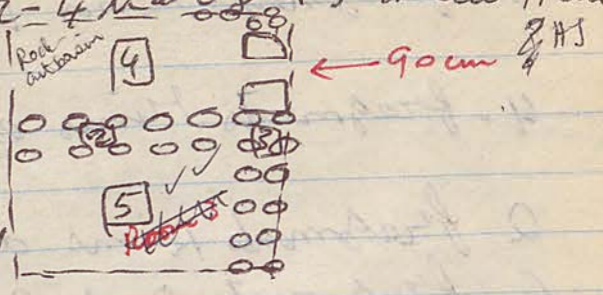
13-5-89 179/5 [5]

- 9- fragments Rims Baday sherds
- 2- fragments Rims echinus
- 3- fragments Rims a hol Baday sherds
- 1- fragment Rim flaring a shallow plate
- 4 fragments Bas Baday sherds (circular)
- 3- fragments Baday sherds cooking bowl
- 2- fragments Baday sherds of red glaze
- 1- fragment handel Baday sherds

14-5-89

Azeen - 2- talah - 3- Bader - 4- Maryam - 5- Hadli-Hade

179/5 [4] today we continue digging on this locus on the north the square and



it is appeared door way, opened to ~~the~~ east it is width 90 cm and the stone door it is depth 55 cm from the North and 30 cm from the South. Also

Note 33
The locus N.0 [4] which lay on the north square belongs another building?

179/5 [5] This locus lay on the south square and it consist of part from Room N.0 3. so gam took out a lot from stone tumbled (foullen) stone tumbled.

179/5 : S (27) piece from glass

D6 [3] today we continue the work on this locus about to 9 identified to be rimoted quartz yard and this is flower lapel



D6 [3] S: (28) piece from glass.

D6: [3] (32) Rims B. sherds

D6: [3] S: (29) Bronze niches

D6: [3] (33) head pegreen

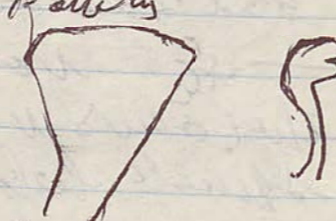
figurine

14-5-89 - 17915 [5] Pattery

- 5 - fragments Rims Baday sherds
- 4 - fragments Rims echinus plate
- 2 fragments Rims a shallow plate
- 6 - fragments Base Baday sherds
- 7 - fragments Baday sherds a cooking bowl

14-5-89 - DG [3] Pattery

- 7 - fragments Rims Baday sherds
- 1 - fragment rim red glass
- 1 - fragment rims maratrum
- 4 - fragments Rims echinus plate
- 3 - fragments Rims a shallow plate
- 3 - fragments a handel Baday sherds
- 3 - fragments Base Baday sherds
- 1 - fragment Baday sherds red glass



14-5-89

17915 [4] Pattery

- 2 - fragments Rims Baday sherd
- 1 - fragment Baday sherd red glass

15-5-89

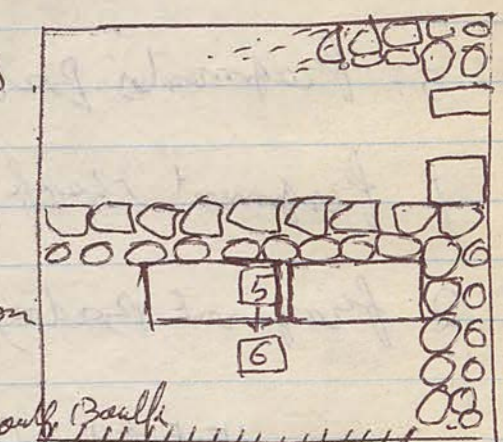
- 1 - Azeen 2 - Saleh 3 - Bader Maryem - Hadli - Hadli

17915 - (south Baulk) we starting tack out the south Baulk which tumbled out it has a lot of pattery

17915 [5] (30) ^{Baulk} ~~the~~ peace glass

17915 [5] (34) ^{Baulk} Basalt stone

17915 [6] This Locus lay on the beneath Locus N [5] and it consist of frame ^{south Baulk} floor level from the soil and it is covered off the room N.0 3 also there is a son peperment on the north the Room (3).



DG [3] today we continue the work on this locus it is seem ^{ashy} as a gray color and it is tumbled from pattery and ~~bones~~ bones



15-5-89 17915 s Baulk

- 5- fragments Rims Baday sherds
- 3- fragments Rims echinus
- 5 I- fragment rim cooking Baul Baday sherds
- 1- fragment rim plate

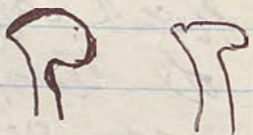
5- fragments Bas Baday sherds (circul)

1- fragment roof pottery

2- fragment Baday sherds cooking Baul

15-5-89. DG (3) pottery

2- fragments Rims maratatum



2 fragments Rims a hol (pado paday sherds)

1- fragment rim plat

5 fragments Base Baday sherds

4- fragments handel Baday sherds

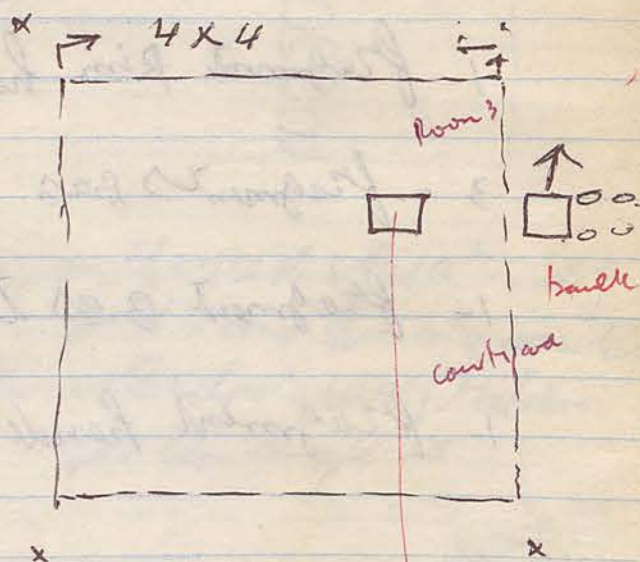
1- fragment Baday sherds red glyze

16-5-89-

w: ("All workmen")

17917 ^{west} □ this square lay on the west square E 4
 and it's a lot of son foulea in it A lso
 contains part of Room 3 it has E side part Combenain to the Room no 3
 and the quest yard. it has door way coming
 from the Room no 3 and to the quest yard

17917 □ (3A) fragment
 Bas has green glyze
 89.768 ✓



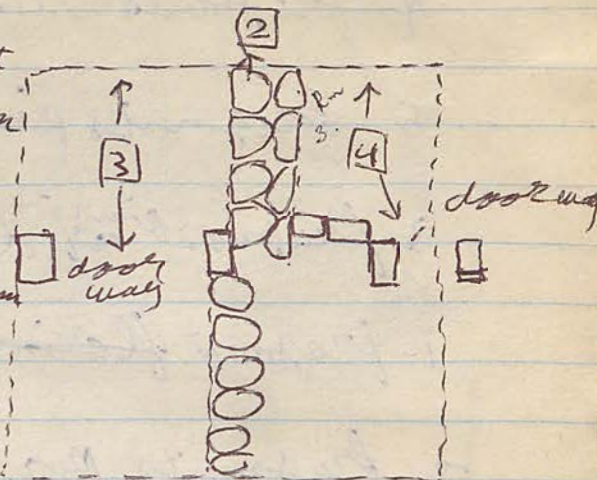
10-5-89 17917 [1] Patterns

- 6 - fragments rims Baday sherd
- 1 - fragment rim plat - Black glossy
- 1 - fragment rim flattening (plate)
- 1 - fragment rim hole red glossy
- 3 - fragments Bas Baday sherd
- 1 - fragment Bas toe
- 1 - fragment handel Body sherd

17-5-89
All workmen

36.

179-7: [2] This locus consist of from the wall Jan coming from the north to south. and this is a wall between the room N.0 3 - (western well)



179/7 [3] This locus lay on the west square, it's behind the quartz yard, and there are in the middle it door way this is the door way between to the other building. see the map →

belongs to

179/7- [4] This locus lay on the East square and it consist of a soil hard something also a lot from stone foundation - quite hard + much trouble

17917 [4] [35] Basalt Stone

17917 [4] [36] Bronze head

- 179/7 [4] [51] fragment figurine (head woman) 89.928 ✓
- 179/7 [4] [52] 3-fragments figurine head woman 89.934 ✓
- 179/7 [4] [53] fragment figurine represent leaf for hair 89.937 ✓

17-5-89 - 17917 [4]

9- fragments Rims Baday shreds

5- fragments Rim echines

3- fragment Rim and bowl


1- fragment flaring Rims flaring Baday shreds

7- fragments Base (circul) Baday shreds

1- fragment Bas Toe Baday shreds

3- fragment handel Baday shreds

2- fragments Baday shreds green glaze

1- fragment Baday sherd red glaze gysed 

1- fragment Ston Black and whit color like marble

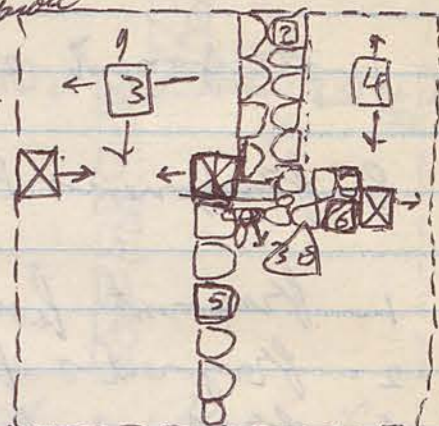
18-5-89

All the workmen + ^{add} Mhamad haj Khaled

37

17917 [3] ~~the~~ today we continue

the work on this locus which covered the west part of the square, and perhaps this locus form out side the court yard



17917 [4] this locus form a part from Room N.03 and part from the court yard, and situated between it and between locus N.03 the wall stone (locus N.2) and the wall court yard locus N.0 [5]

17917 [4] [38] ^{89.755 ✓} figureen fragment it broken found it on the corner between locus N. [5] and locus N.0 [6] and this figureen represent a ~~house~~ a women without head.

17917 [5] this locus consist of a wall ^{stone wall} stone coming from the north to south and it is represent the end court yard from the west, also it is herey then it is between 50cm and 40cm

17917 [6] this locus consist of from the stone wall and it is between the door way and wall court yard

18-5-89

17917

[3] Pottery

6- fragments rims Baday shreds



1- fragment echinus plate

8- fragments Base Circular

1- fragment handle with rim



2- fragments handle

9- fragments Baday shreds cooking Bowl

8-5-89-17917- [4] Pottery

6- fragments ^{rims} Baday shreds

1- fragment rim ^{maratrum}



4- fragments rim echinus

1- fragment rim hole red painted out side

1- fragment Base red ghyse Baday shreds



5- fragments Base Baday shreds

2- fragments handle Baday shreds

1- fragment figurine

2- fragments Baday shreds engaged



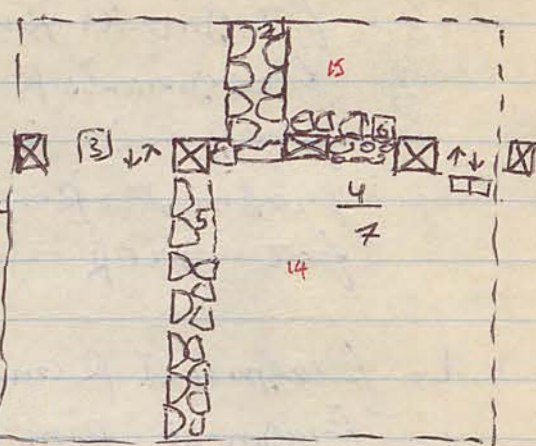
1- fragment Baday shreds cooking Bowl

20-5-89

(2- workmen) ((fawajj killed) instead of talk)

17917 [4] Today we continue the work on this day and the soil seemd very soft and a lot of pottery

17917 [4] [39] Basalt-Don



17917 [3] this we continue the work on this locus

outside^{to} which lay out side to good and the soil has some^{colour} very soft and it ^{colour} acibus grey ashy grey

17917 [3] [30] small Bedstead

17917 [7] after 77 cm from the top sample to depth start the new locus which ^{has} in it a new jamb that is jamb may be earlier period from the first one and more depth. Also this locus very soft soil and it has a lot of Bone. This locus also refer to ((the second occupation at it is chapel floor))

17917 [7] 5. [31] Bone

17917 [7] [40] fragment figurine 89.900

17917 [7] Also it ^{finished} this locus on depth 100 cm. to start a new locus. also there are steps to a wall ^{to} a flour chapel etc.

[4] here is not "Room 3" but courtyard

20-5-89

17917 [4] Pottery

- 3- fragments Rims Baday sherds
- 3- fragments Rims echinus plat
- 1- fragment Rims with neck
- 1- fragment Rim with handel for a sack

- 1- fragment Rim flat plate
- 1- fragment Rim a hole red glaze
- 1- fragment Rim a hole (black glaze)
- 1- fragment handel Baday sherds
- 7- fragments Bas Baday sherds

- 3- fragments Baday sherds geyged
- 1- fragment Baday sherds green glaze
- 1- fragment Baday sherds red glaze

20-5-89- 17917 - [3] Pottery

- 5- fragment Rims Baday sherds
- 1- fragment Rims with neck Baday sherds
- 1- fragment Rim hol plate red glaze
- 2- fragments Rims hol plat Baday sherds
- 2- fragments Bas red glaze Baday sherds
- 4- fragments Bas Baday sherds
- 2- fragments handel Baday sherds
- 1- fragment geyged ware red glaze
- 1- fragment Baday sherds red glaze

21-5-89

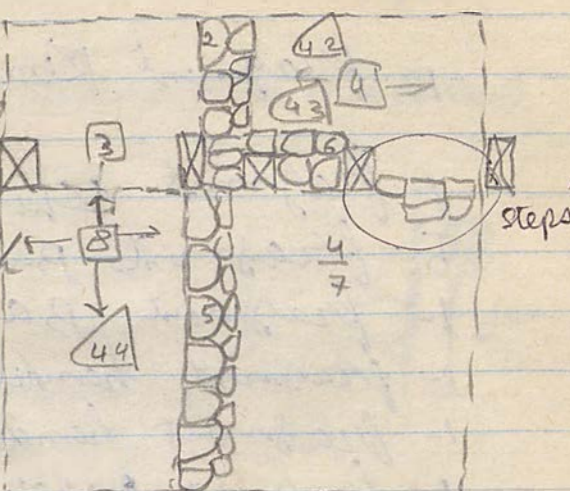
(6 All workmen)

39 ^{at} level

- 1- M hamad - kheel
- 2- Fouaf
- 3- Bader
- 4- Hadli
- 5- Hadli
- 6- Muzem
- 7- Muzem

17917 - [8] this locus lay

Beneath locus N. [3] and it is consist of a flour lapd spread all the west side and starting digging Beneath it from the south to north it long 2.25 cm as sa the map



Also this is a lapel flour

[8] consist of from stone pile and pottery Also this locus lay on out side ^{outside} Building.

17917 - [8] S (32) ^{continue} fragment Plaster

17917 [4] today we continue the work on this locus which cover the E side square and add of pottery I found.

17917 [4] [42] (cloub hand) Blange = Area 15

17917 [4] [43] foil from iron = Area 15

17917 [8] [44] Bead stone 89.877

17917 [8] [49] fragment Lamp 89.883


17917 [4] [50] fragment Black gray plat

21-5-89

17917

[8] Pottery

of fragments Baday sherds

1- fragment rim plate → 



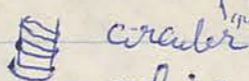
1- fragment echinus rim (plate)

5- fragments Base Baday sherds

1- fragment Bas toe

1- fragment handel Amphora



1- fragment handel →  cruder

1- fragment Baday sherds cooking Bowl

2- fragment Baday sherds gysed

21-5-89

[8]

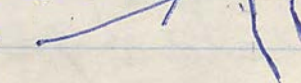
17917

[4]

* 12/13

4 fragments rims echinus

2 fragments rims Baday sherds


1- fragment rim flaring cup → 

2 fragments rims a hol plate

1- fragment rim flat plat

1- fragment rim green gysy (plate)

4- fragment Base Baday sherds

1- f Base Amphora → 

1- Bas Petals (big jar)

1- fragment Baday sherds Black gysy

4- fragments Baday sherds cooking Bowl

1- fragment handel Baday sherds

22-5-89

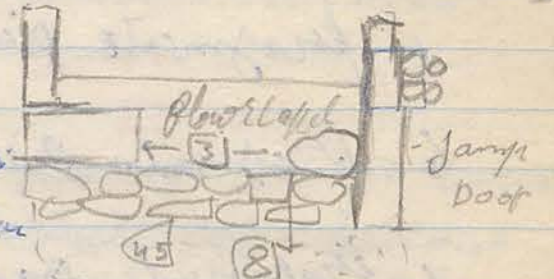
40

(6 workmen) 1- Mohamed 2- Bader 3- Faruq 4- Maryem Ahmad-
5- Hadi 6- Sir (of adli to house 1)

17917 - [8] today we continue the work on this locus

E-W section door way

which appeared the door way
out side the building, was well
and construction it (As the map →



they put the stone foundation
the first time and put Big stone

Beneath the west west ramp which was shorter from
the E side ramp door way. Note shorter jamb - sec door
Longer jamb onp. door (to East?)

17917 [8] 45. fragment figure in red woman))
89.875

((62 cm slope delta))

17917 [8] 46. Two pieces from Botany
89.891
2 frags bronze?

22-5-89 17917 [8]

5-fragments Mims Baday shreds

8-fragments Rims echinus

1-fragment Rim Black glaze →

6-fragments Base Baday shreds

1-fragment Baday shreds Black glaze

1-fragment Baday shreds cooking Bowl

(Maryam A bed is 37) 23-5-89- 14917 41

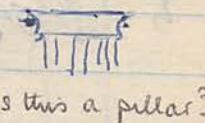
(6 workmen) 1-Mohamad-2-Bader-3-Fauzi-4-Maryam
5-Kadli-6-Kadli

17917 [8] today we continued the work on this locus which seemed more heated and a proper foundation to doorway very well. Also it has a lot of pottery

also 89.955 ✓
89.902 ✓

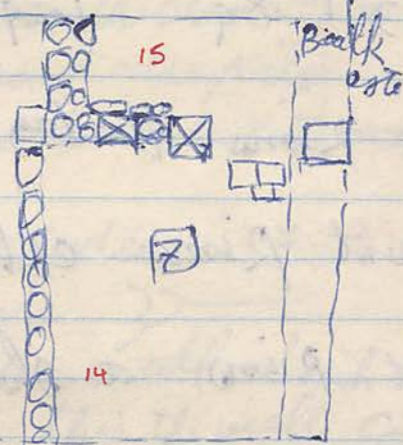
17917 [8] 47 3 fragments from fig 100 consist of front part of the chest and the middle found it together perhaps for the same fig 100.

17917 [8] 89.908 46 fragment pottery



is this a pillar?

17917 [9] this locus consists of a deep floor from plaster. Also this is locus. Return to Bierst excavation



17917 ^{Eave} Este Baulk Today after noon we started digging on the Este Baulk which consist of from the soil and ^{trouble} stone fallen. Also we found in side the door way stone bowl, it long 57 and width 23 and its height 21 cm. depth 10 cm

stone bowl
57x23
H:21
D:10



17917 [8] 55 fragment Rim? 89.728

17917 [8] 56 fragment Lamp 89.712

17917 [5] 57 fragment Rim Black glaze decorated inside 89.733 ✓

23-5-89 17917 est Baul

- 6- fragments rims Baday sherds
- 2- fragments Rim Echinus Plat
- 1- fragment Rim flaring cup
- 2- fragments Base Baday sherds
- 1- fragment handle Amphora
- 1- fragment Red color plaster
- 2- fragments Black glaze Baday sherds
- 5- fragments Baday sherds cooking Baul



23-5-89 17917 (8)

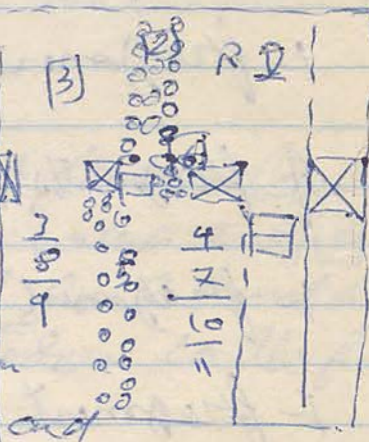
- 9 fragments Rims Baday sherds
- 25- fragment Rims echinus.
- 6- fragment Rims a shallow Plat
- 15- fragments Bas Circular
- 1- fragment Base ensenturum
- 6- fragments handle Baday sherds
- 1- handle Baday sherds with rim
- 1- fragment Baday sherds gylled it is color red
- 1- fragment Green glaze Baday sherds
- 1- fragment Baday sherds cooking Baul



24-5-89 (6 workmen)

17917 (9) Today we continue the work on this locus which consist of a lapid floor, it is from plaster white and it is color shining from the north to south, this is floor return to first occupation, in the second building

17917 (10) This locus was length 10m it is consist of a full side and pillars which to know the first occupation, also the door on the second occupation which relate to locus 7 and locus 9



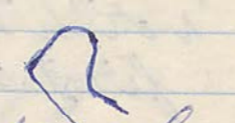

17917 (11) a median = 89.926 long flint note 3

Lead no. 2 is stone wall which height 40cm it is second period. This the wall considered the west wall on the room no. 2 which should be the first period. so we can say the room no. 2 was not doorway on the south east on the east. They also open the south door way from it on the quiet yard and belt the wall locus no. 2 and belt wall locus 5 and quiet steps from doorway to court yard

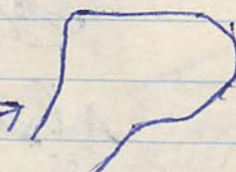

Also we found the locus no. 9 which it is floor lapid and it is return to first period that meaning the quiet yard was not perhaps to to visit enter through the locus no. 9 we need more excavation on the north to see end room no. 2.

Court yard

JR-24-5-89 - 17917 [10]

- 10- fragments Rims Baday shreds
- 3- fragments Rims echinus
- 2- fragments Rims ahal plate Baday shreds
- 1- fragment Rim shallow plat → 
- 9- fragments Base Baday sherd (Circular)
- 1- fragment Base Toe Baday sherd
- 1- fragment a handle Baday shreds
- 5- fragments Baday sherd cooking Bowl
- 2 fragments Baday shreds red glytze
- 1- fragment Baday shreds gear gorged 
- 1- fragment plaster Red color
- 1- fragment Baday shreds Black glytze has palmetto

24-5-89 17917 [9]

- 18- fragments Rims echinus
- 4 fragments Rims Baday shreds
- 1- fragment Rim flaring Baday sherd → 
- 8- fragments Rims ahal piece
- 8- fragments Rims a shallow plat
- 11- fragments Base Baday shreds
- 1- fragment Base fish plate
- 1- sample from pottery → 
- 2- fragments Baday sherd cooking Bowl gorged
- 1- fragment handle cooking Bowl Baday shreds
- 2- fragment handle Baday shreds

25-5-89

43

(Growth men)

17917- [10] Today we continue the work on this case which appeared A city gray and a lot of palyball's stone, and a lot of pottery. also want to know the floor level which return to the first period. also this is a local full pattern to level floor and between two period.

17917 [11] this case consist of from a level floor it & beneath cases n. of [10] which consist from full bowl tumbled. also the cases n. of [13] return to the first & cupation.

25-5-89- 17917 [10]


9- fragments Rims Baday sherd

2 fragments Rims maratarum Baday sherd

4- fragments Rims shallow plate 

3- fragments Rims echinus plate


1- fragment Rim echinus used black glaze

9- fragments Base Circular 

2 fragments handle Baday sherd

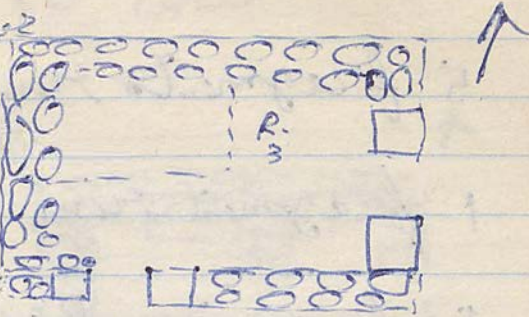
4 fragments Baday sherd cooking bowl

2- fragments Baday sherd red painted

1- fragment lamp 

~~25-5~~ 27-5-89

44

17917 Room N.3 W-N 

Today we start dig on the
room 2 about to get the
identify the other wall
specially the wall western
and it appear very well.

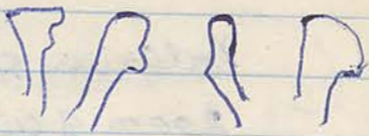
27-5-89 Room [N3] corner N-W

5 fragments rims Baday sherds

1 fragment rim echinus plate

5 fragments Base Baday sherds circular

1 fragment handle Baday sherds

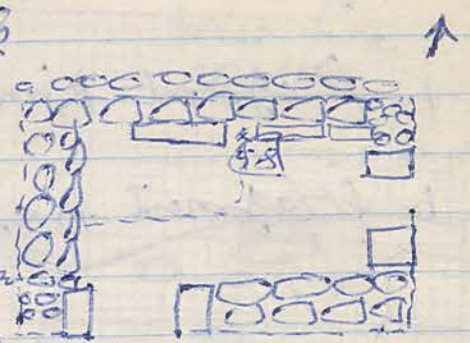


28-5-89

45

C. workmen
Room N.3 corner N.W NW corner

Today we continued the work
on this room which seemed
more large its appeared his
stone pavement. it is also
there all four more his stone
on the site. Also this room
second original in the floor is too a cupation
on the same floor level? -



Room 3 (58) corner N.W- ^{day loonweight} loom wheel from road
89.845
perhaps this room ^{no} was used shipping?

No mention of "tanner" at W. wall. - not in
1990.

Must have been found at end of '89

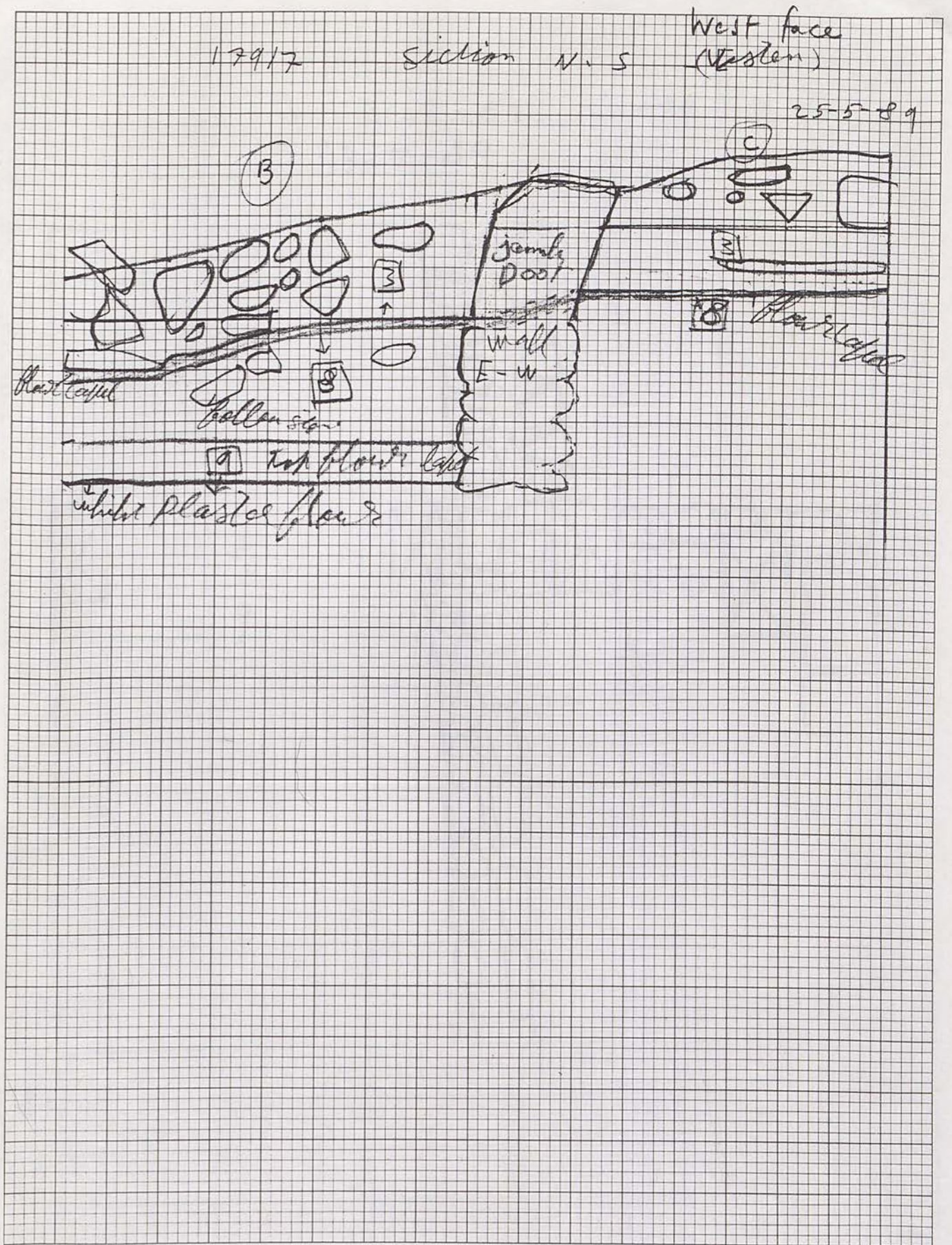
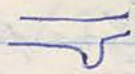
28-5-89

17917 - Room No. 03 N.W. Corner

2 - fragments ^{rims} *Techinus* vase

1 - fragment Rim Baday Sherd

1 - fragment Bas Baday Sherd

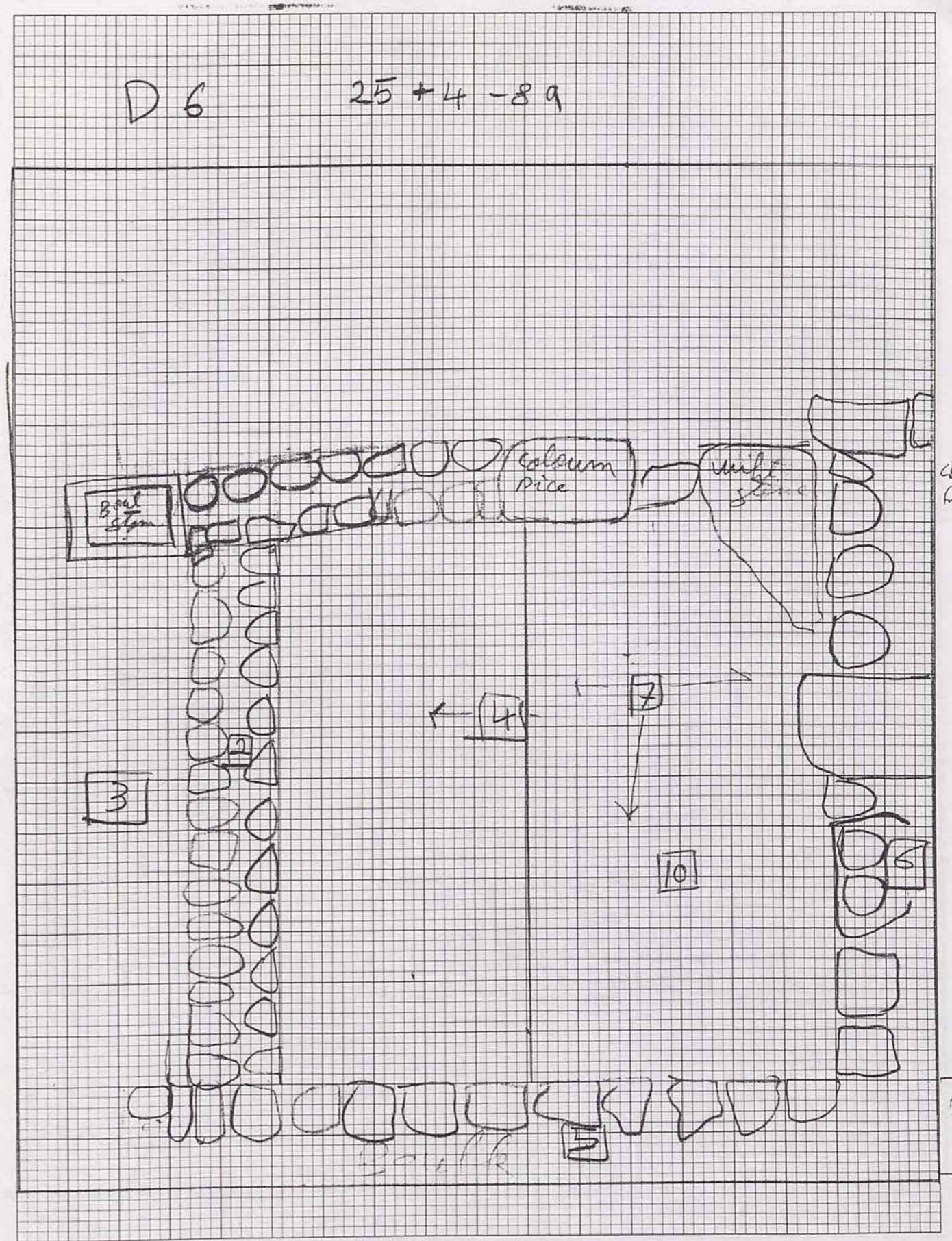


Doorway between 20 and 21
 Query: upper floor level in South? (8) is not floor level? in South.
 - no mention in dig book? yes p. 38 RU = considered a floor. Steep slope required from threshold. Could be fill?

Courtyard

D 6

25 + 4 - 89



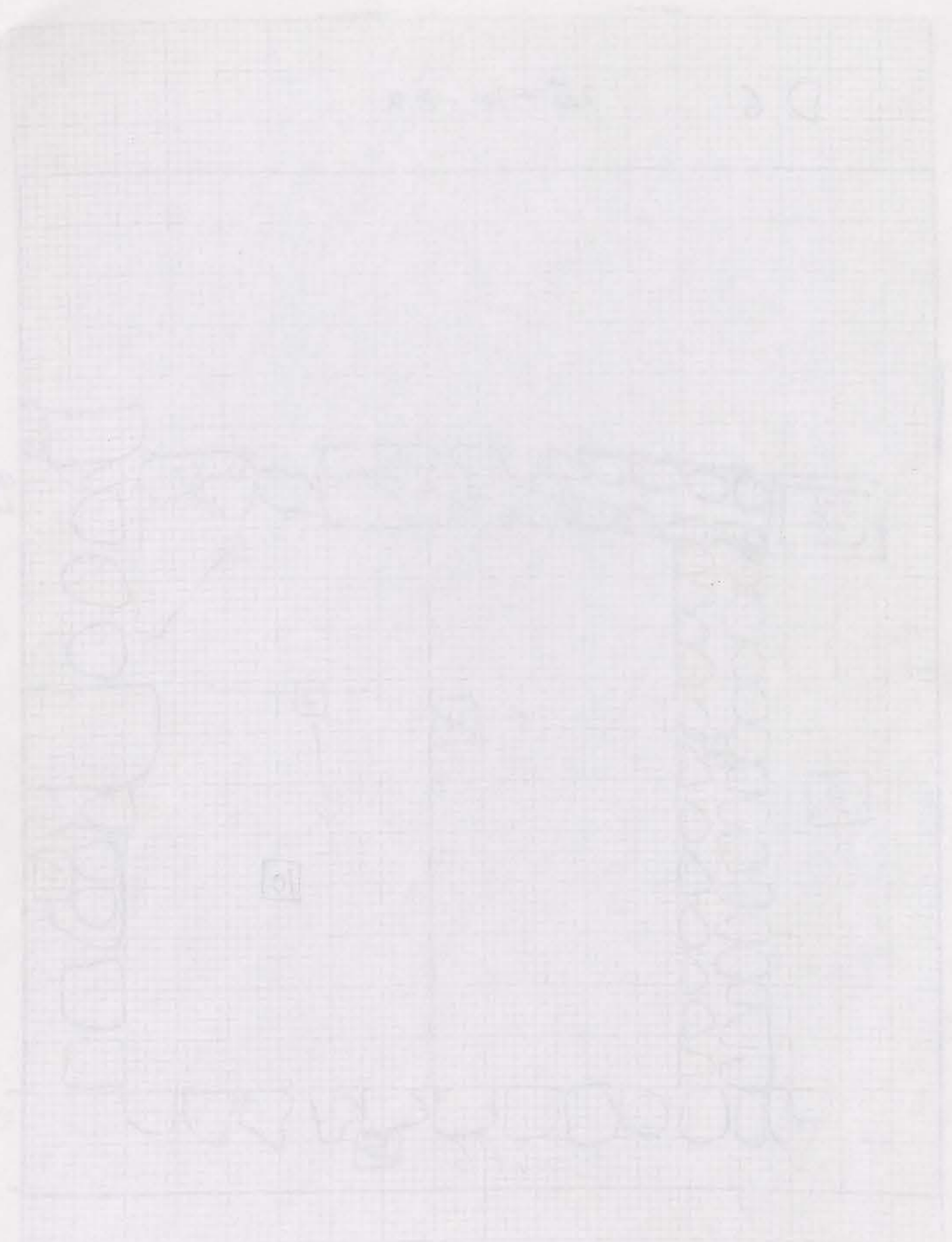
Column
nos.

Goal

Room 4 = Area 11

NB Wall at North using re-used column & probably door stone from primary door 6. This is a doorway North!

Contour



Room 2

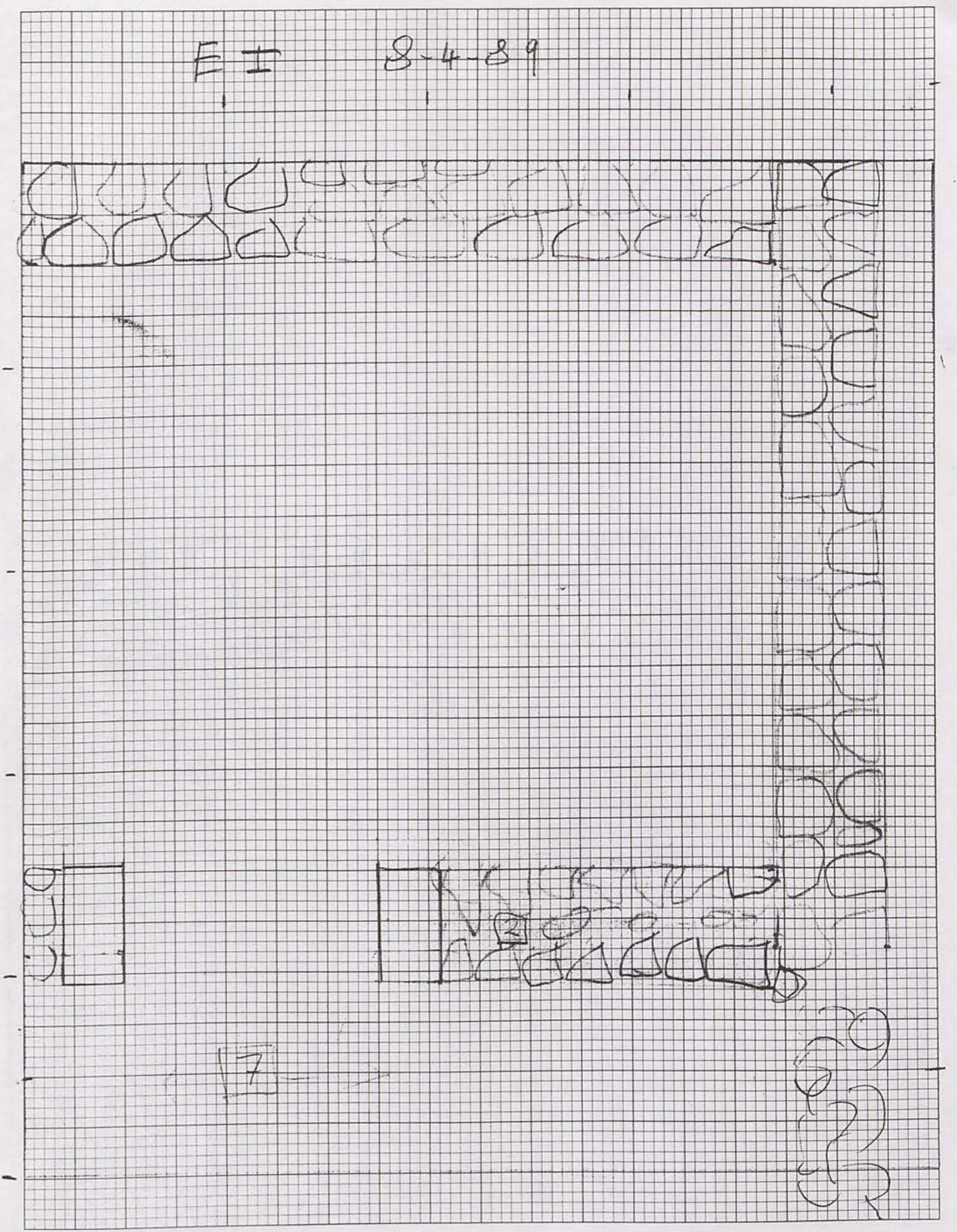
Handwritten notes at the bottom of the page, including the number '10' and some illegible text.

*→

3.75m

Room 2*

E I 8-4-89



KEUFFEL & ESSER CO. MADE IN U.S.A.

Room 1.25m

Room 3

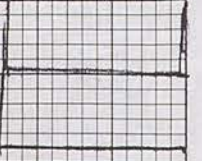


E 4

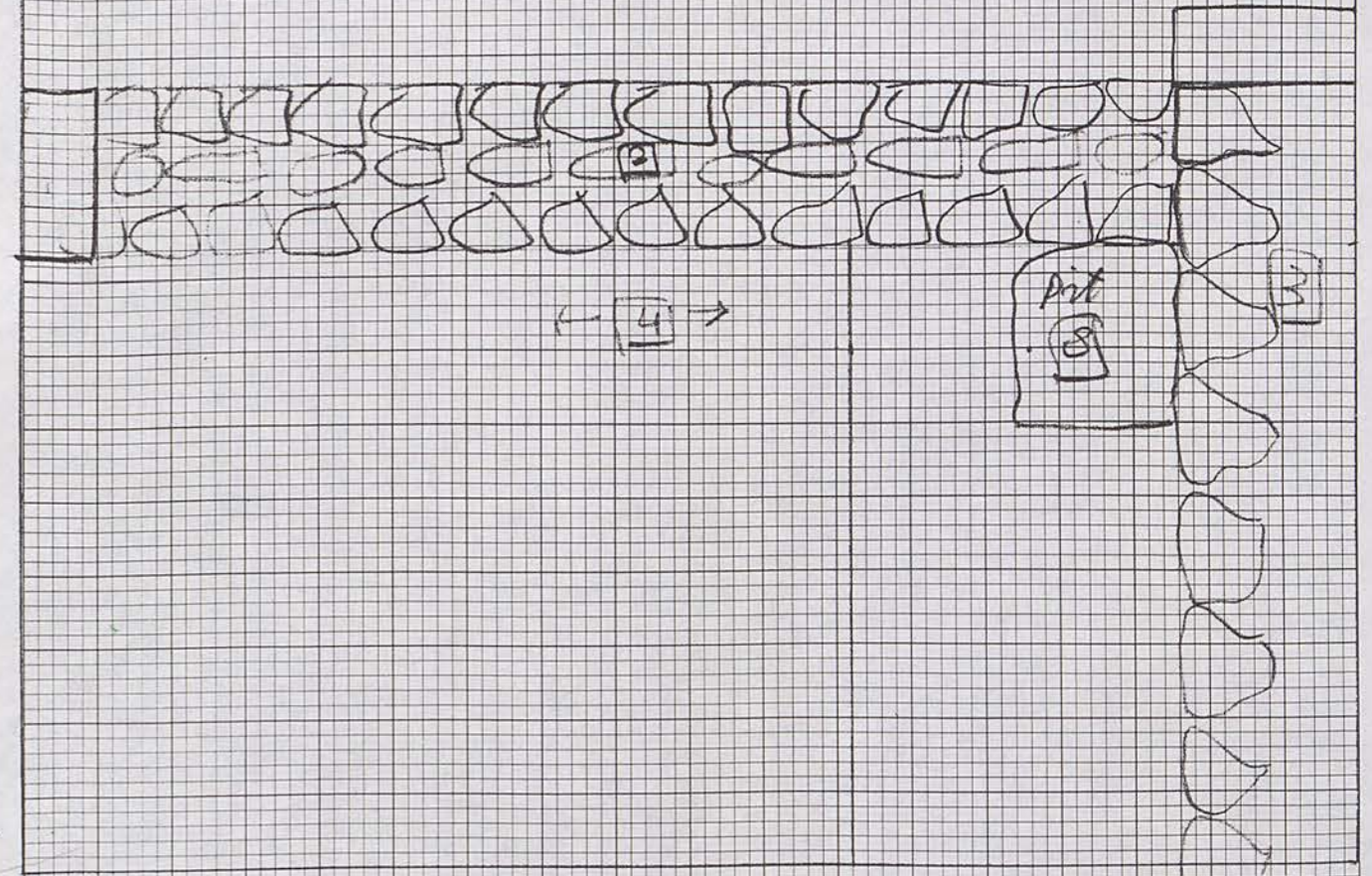
20-4-89

5

6



Pool
Wing for Room 3



Courtyard