

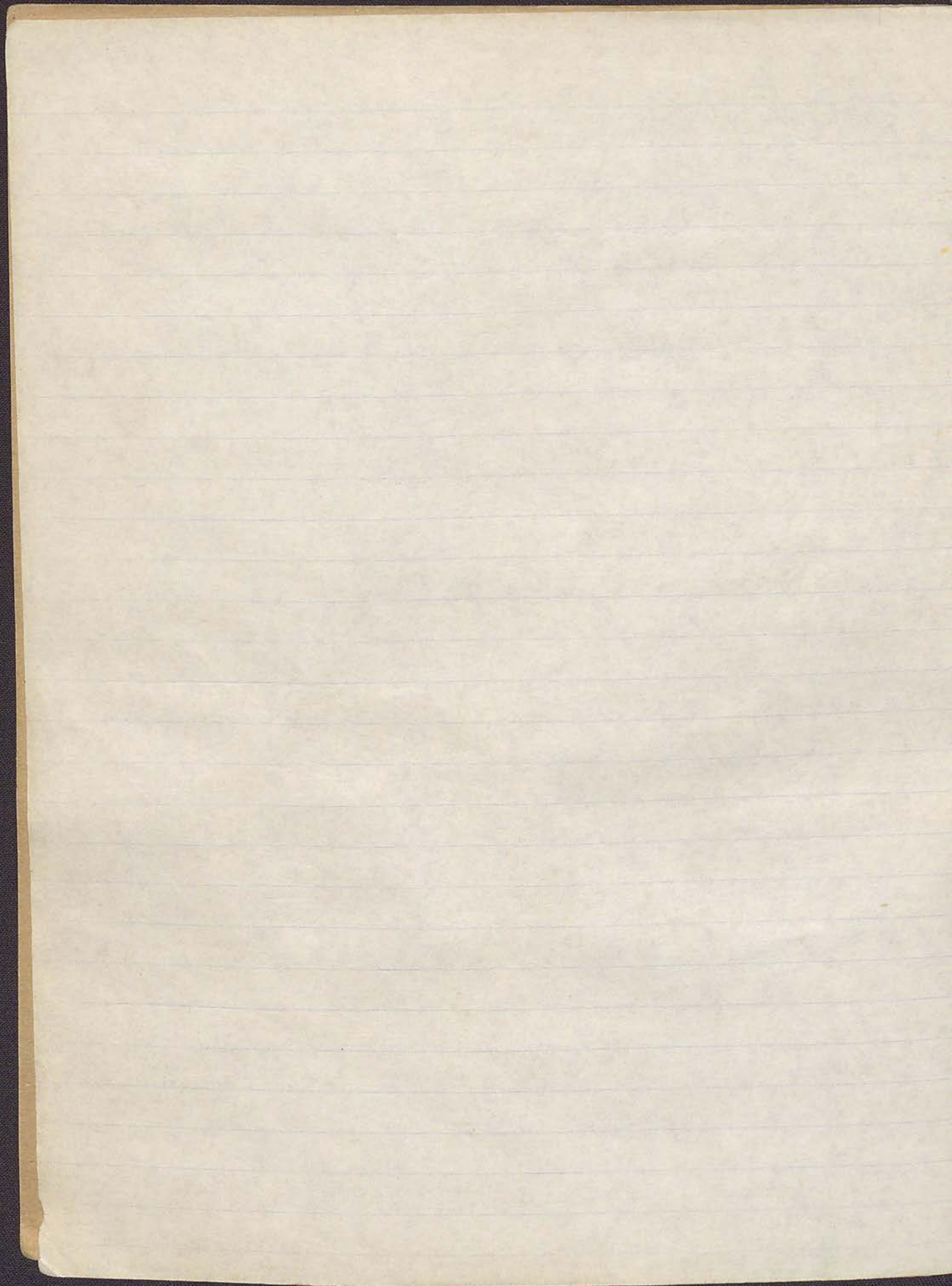


STUDENTS NOTE BOOK

No. 593

UNIVERSITY

<i>Radiyya</i>
<i>0001</i>



21-5-88

J-K
D3 -

- 1- nageiha
- 2- Hdleh -
- 3- molhee

today we are starting digging on this square
beginning take out the grass and the small stone floor
the land appeared very hard (and the color is white
B ring, and without any Batter)

JK 22-5-88

D3

①

②

courses war - Badley shards

I rim fragment echinus

I rim fragment flaring Bowl

I Base fragment courses war

I rim

40 - Badley shards

Bowl

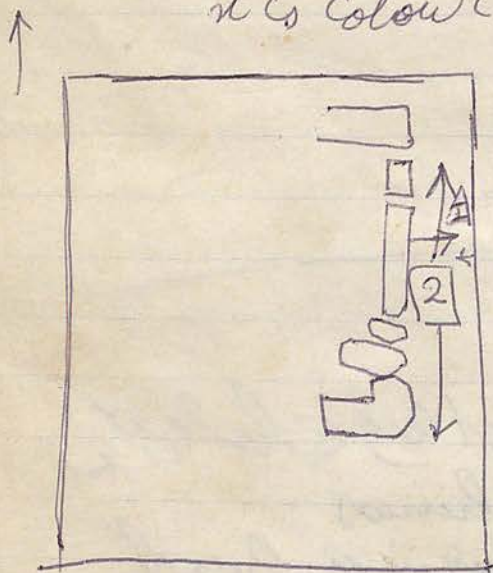
J-R. D3

22/5-88

1 - vazeha - 2 - Hadlih 3 - mdhee - 4 - sbah

[1] (2) We continue the work on this locus which consist of from the surface and a lot of stone found it on the middle square. Also it is found to stone stand up ~~and~~ half door way.

[2] (3) this locus lay on the East of square and coming from the north to the south the width is ~~over~~ 1 meter the length is 5 m and this locus appeared is fine soil and soft it is colour is a yellow and white and some a clay grey had appeared on the north of the locus [2]



[2] (3) 1 Basalt stone like ha

D3 22-5-88

[2] (3)

cours ware - Badg shards
2 rim fragments cours ware
1 handle from jar

26 Badg shards

J.K.

23-5-88

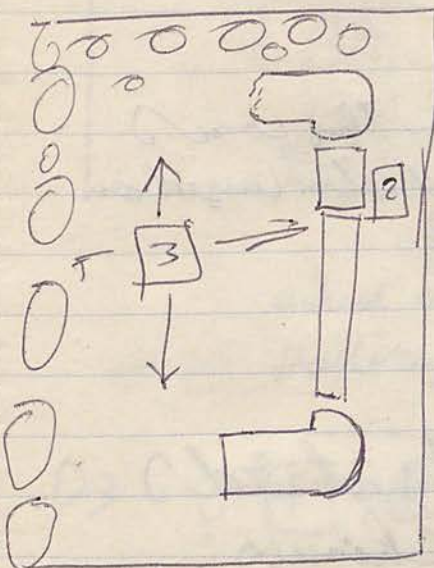
D-3

nam - 1 - mhamad Hajar - 2 - salha Hajar
3 - Hsa mhamad - 4 - Hadlik mhamad.
Ahsunt ((mdhee))

[2] (4)

today we continue the work on this coars
which appeared parallel on the north it
and some whit stone snaf.

Also had appeared Ten circular stone on
it is face and it is cut from the other
and lay between this stone along stone stand
up - perhaps to mark this got more narrow
on see the map.



[3] (5): this coars lay on the west
coars No. [2] and consist of arial
which has a lot of a stone hollow
between this stone. We found
three stone (do not appeared here) and
has a head carved, and from the
other side had cut.

23-5-88

D3 - [3] (5)

- 1 - Curiswar Body shards
- 1 rum shards flaring head
- 2 Bas fragment coverd war head
- 32 Body shards

JK.

24-5-88

03

- 1- Hadli Almhamed - 2- salha hasey - 3. Hossa mhamad
 4- mdher Alyhya - 5. Mhamad hasey

D [2] (6) [3] (7)

[2] (6): We continue the work on this course and it is seen on the north the soil is mixed in a ~~at~~ phal stone whit. and on the north lay a ~~ch~~ment stone ~~like~~ like a well. Also there are walls come from the north to south.

[3] (7) We continue the work on this course ~~for~~ where the three ~~s~~ carved stone layed on the medel of the Propu

D3

24-5-88

✓ [3] (7)

course war - Badg shards
 1- rim fragment Chinus
 3- rim " course war
 27- Badg shards

JK- D3- 25-5-88

- 1- Medhie ghyza
- 2- Mhamad hasee
- 3- Alsalhahajee
- 4- Hadlee vaser
- 5- Hsemhamad

[4] (8): This loam lay beneath loam no [2] The soil is hard and mixed with a small stone ballin. and the couler it found and it is long four meter ^{4.00 m} starting after a line with stone and stone ballin see the map and the soil seem very fine so appeared



(a) the flour stone whit stone payment with 3-litre until you.

[3] (9): We continue the work on this loam which appeared over stones ballin and very little pottery between it

D3

[4] (8)

coars ware - Body shards
3 rim echims

2 Base fragment coars ware

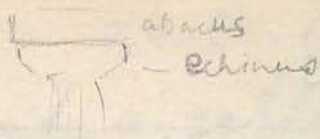
33 Body shards



lamp?

25.5.88

D3 [3] (9)



echinus

- coarse ware body frags.

✓ 3 rim frag echinus bowl

1 rim frag. notched bowl -

- Body shards - 3 I

24-5-88

D3- [2] (6)

- coarse ware - Body shards

1 rim shards echinus bowl

2 rim shards flaring bowl

5 " " coarse ware


2 Bas fragment coarse ware bowls


2 " " fish plad plate

26- Body shards

23-5-88

[2] (4)

2 rim shards flaring bowl → 

✓ 1 rim shards echinus bowl → 

5 rim shards coarse ware →

1 Bas fragment coarse ware

54 Body shards



J.K. - D3

26-5-88

u

1- medlae - 2- mhand - 3- sahha - 4- Hassa - 5- Hadheh

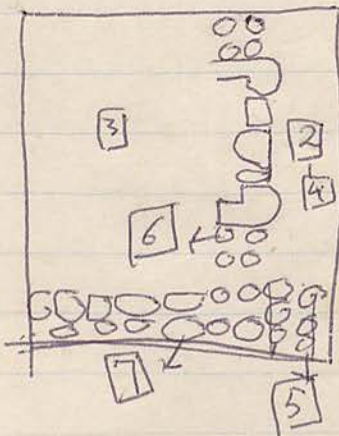
[5] (10) This locus consist of a ~~from~~ wall it is coming from the south and touched locus N.0

[4] from the ~~south~~ south it and touched locus N.0 [6] from the West and the length it is [180 m.] the width 80 cm

[6] (11) this locus consist of ~~from~~ a wall stone coming from the north to the south. including it a door way, ~~and~~ which consist of ~~from~~ a tow column stone and between them a stone stand up with three decoration ~~on~~ from beneath it, and may be coming from the other said (atempal?)

it is starting from the north Bouleq and touched locus N.0 [5] and locus N.0 [7]

[7] (12) This locus consist of ~~from~~ a wall stone coming from east to west starting from south locus N.0 [6] until ~~the~~ west square along south square. see the map



[3] (13) we continue the work on this locus and I had took out a lot of stone which was on the mid of the wall also I to took out three stone & circular

JK.

D3 -

26-5-88

3 (13)

coars ware - Badg shards

3 thin fragment echinoid bowl

30 - Badg shards



D3-

J-K-

29-5-88

1-Hadleh-2-salha-3-medhee-4-mhamad-
5-Hassa-

[3] (14): we continued the work on this level which had appeared very stony, and a lot of pottery on it, and some Bone found, and the kind of pottery are cooking Bowl.

and today the area which lay the E side of the square has seemed the soil is softy and a lot of chandis and ruins and Bone.

D3

29-5-88

3

14

Cours ware Badg Shards

3 Rim fragment flaring Ball and
some one is Burnished its color is red

10 - Rim fragment cours ware Ball

5 - handle's fragment



3 - Base fragments cours Boule

2 parts cooking Ball.

23 Badg shards

D3

JK-

30-5-88

1. Mhamad 2. Mdheer 3. Hassa 4. Sakha 5. Hadith

[3] (15): We continue the work on this level and I had
noticed there are trachald between the the two
~~colours~~ Colomk stars, and some Bone
triglyph?

D3

3

JK

30-5-88

15

Cours ware - Badley sherds

I Bandel fragment

I Rim sherds flaring bowl

4 Rim sherds cours ware

10 - Rim sherds e chined bowl

4 - Bas fragment cours ware

180 Badley sherds

I Hammer stone

3 fragment cooking bowl

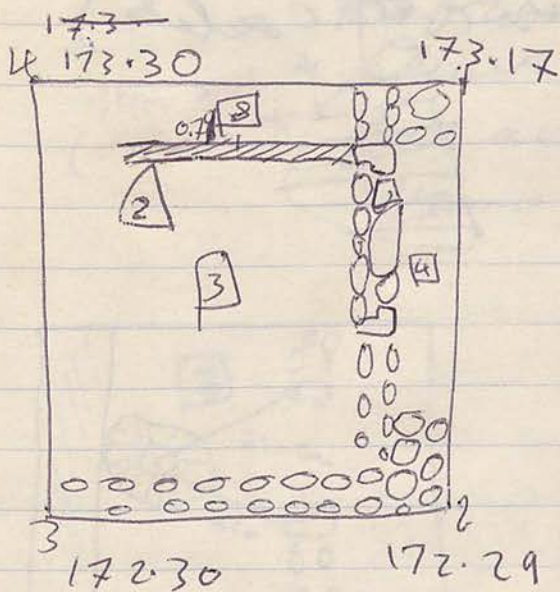
D3

31-5-88

1. mhamad 2. Hssa 3 sakha 4 Hedlih 5 medhee

[3] [16] Today we continue the work on this locus which appeared the same like before.

[8] (17) This locus consist of the plaster floor starting from East to West and this locus perhaps return to another time to the door ~~gate~~ way ~~and~~ when it is shut it. and at a depth 0.79 m from the u point. and beneath it a lot of pottery



[3] (16) (2) Hed a normal hors or cloupe?

1.26 m lower than pt 4

[3] (16) (3) ~~Bats~~ Base fragment

JK

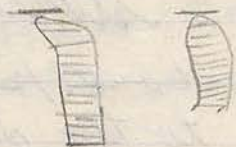
31-5-88

D3

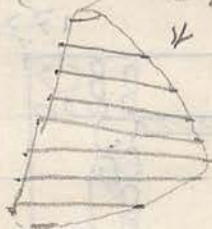
3 16

Courts ware - Baday shards

3 rim fragment echinus haul
 I " " flaring Band
 3 " " courts ware
 2 " " →



4 Base fragment courts ware
 2 fragments cooking Band
 I fragment lines (red color)



100 Baday shards

body

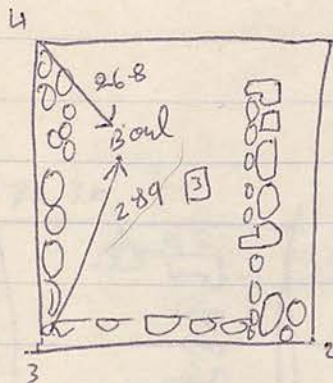
JK

1-6-88

C19
E2C21
120

/D3/ 1- Hadli - 2- Hessa - 3- Sabha - 4- Mhamad - 5- Medhu

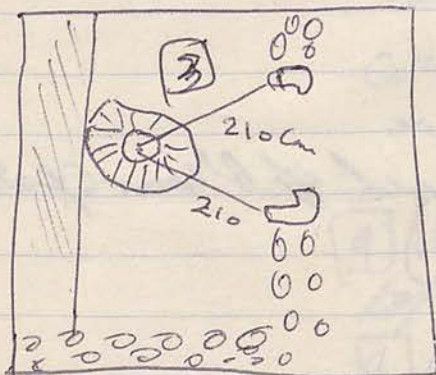
[3] (18): We continue the work on this load species on the west the square. and a lot of stone appeared and were were from the case of square found it cooking bowl fragment we took it elevation for it:



mud floor

Stone bowl
(= column support?)

frame 4 point long 268 and depth 132. and frame 3 point long 289 and depth 43.
and on the end of the load (3) use on depth 130cm there are a floor frame made and on the middle of square there are a stone bowl, near hole for a used column. it's far away from the est 210 cm



D3.

2.6-88

4

1 Fine fragment consist of bone (part)
and it is a red color.

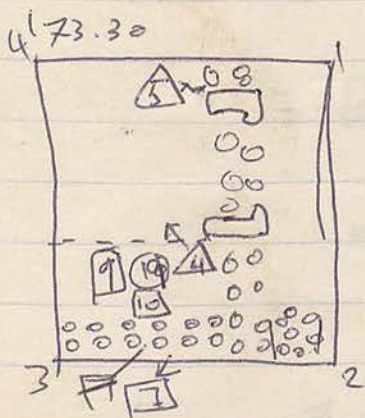
2 Badon shreds.

5-6-88

D3 D31 - m dee kee - 2. Mhamad - 3 Dhaik - 4 had the
it is a floor frome mod and plaster

[9] (19)

This locus lay on the ~~North~~ south of
square and lay ~~on the~~ Beneith
Locus No [3] just go down and along
the locus no [7] and it is a lot of pottery
and the soil a clay grey and very
soft.



[9] (19) Δ a stone Bed Bead
flat - !

Δ elevation = 150 cm = 171.80

$$\begin{array}{r} 173.30 \\ - 150 \\ \hline 171.80 \end{array}$$

[10] (20). elevation 4.29 - depth = 1.28

this locus consist of ~~frome~~ open
circle ~~frome~~ pottery it is diameter 44.
out sid and in sid 39.

[9] (19) Bone Big Bone found on the
top of floor.

[9] (19) 5 wheat stone
elevation → frome point 4 to it

[9] (19) 6 Basalt stone

The first part of the experiment was to determine the effect of temperature on the rate of reaction. The reaction was carried out at three different temperatures: 20°C, 30°C, and 40°C. The rate of reaction was measured by the time taken for a certain amount of product to be formed. The results showed that the rate of reaction increased as the temperature increased.



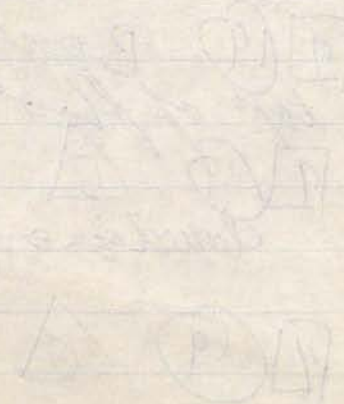
The second part of the experiment was to determine the effect of concentration on the rate of reaction. The reaction was carried out at three different concentrations: 0.1M, 0.2M, and 0.3M. The rate of reaction was measured by the time taken for a certain amount of product to be formed. The results showed that the rate of reaction increased as the concentration increased.



The third part of the experiment was to determine the effect of surface area on the rate of reaction. The reaction was carried out with three different surface areas: a large lump, a smaller lump, and a powder. The rate of reaction was measured by the time taken for a certain amount of product to be formed. The results showed that the rate of reaction increased as the surface area increased.



The fourth part of the experiment was to determine the effect of a catalyst on the rate of reaction. The reaction was carried out with and without a catalyst. The rate of reaction was measured by the time taken for a certain amount of product to be formed. The results showed that the rate of reaction was significantly faster when a catalyst was used.



JK

D3

2.6.88

3

Courts ware - Bodas shards

8 Rim fragment echinus bowl

9 Rim fragment flaring bowl

I = = Courts ware bowl
and painting

3 Base fragment courts ware
like a cop. pos. glass seal on exterior
a hole in center of (?) seal




7 pieces from cooking bowl
120 Bodas shards


JK- 5-C-88


P 3

9 19

Cours ware - Badaj shards

2. Rim fragment flaring Bowl 

1. rim Cours ware Bowl 

1 Base fragment Cours ware 

1 Handl fragment

2 fragment cooking bowl

1 fragment Red shining

1 fragment Tanoor

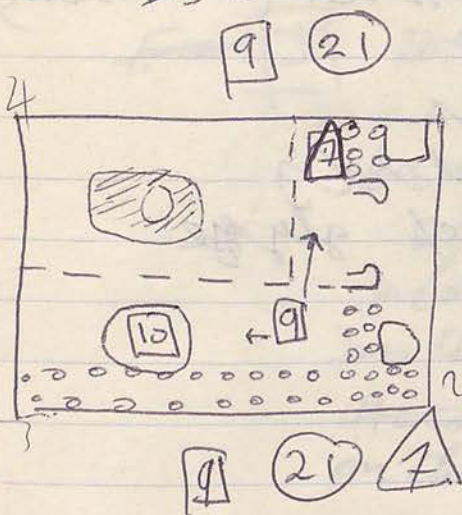
55 Badaj shards.

JK-

6-6-88

1. uhammad - 2. mdeeha - 3. hadli - 4. Ameenil - 5**
5. Nauma - ~~dhia~~ dhia.

D3 -



Today we continued the work on this locus. on the south of square and from the top course n.o [4] to beneath it 125cm found it Bedrock, above it a lot of stone small and the basal floor which it lower n.o [9] more haist from lower n.o [10] in 9 cm. elevation 1.29 to lower n.o [9]

[9] (21) 7 (sheet B & only)

179/1

E D

6-6-88

[I]

We start dig on this square which seemd is grassy surface, and on the medell square there are to Big Stone, and the work around them. Also the soil seemd soft.

JK-

D3

[9]

(2I)

cours ware Badg shards

- 3 Rim fragment cours ware Bowl
- 1 Rim fragment flaring Bowl (red color)
- 5 Rim fragment
- 1 Rim a chinis fragment
- 22 Fragment Badley shards
- 1 fragments lushous black glyse
fine fabric

JK- 6-6-88

[1]

E I

cours ware - Badg shards

- 1- Rim fragment achinus bowl
- 5 Rim shards cours ware bowl

3 Base fragment cours ware.



25 Badley shards

- 1- Rim fragment Badley shards
upper from the dial 5 shards

JK. E I

7-6-88

179/1

1. ndehi - 2. Mhamad - 3. hadlih - 4. dehia
5. Naama - 6. Ameena -

~~E~~ I today we continued the work on this

Locus which appeared the soil very
soft between the stones and it has
a lot of pottery, and the work more successful
on the East Muer because we went to
Recovering identified contact locus no. 6
on the Muer D3. 12 - N/S wall

JK EI

7.6.88

II

cours war - Baday shreds

2 Rim fragment e chinos Bowl

4 Rim fragment cours war

3 " " flaring cours Bowl

4 Base fragment



I handel fragment



119 Baday shreds

JK-

E-I

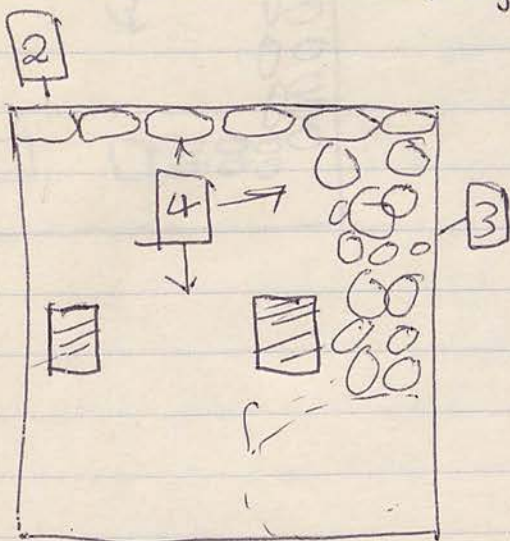
8-6-88


Mohamed - 2. Hadie - 3. Ameen & Hadie Mahmood
5 - Naima.

[2] This load lay on the north of the square and consist of the stone wall coming from the East to west and touching Load No. [3] which coming from the north to south

[3] this load lay on the east of square and consist of the stone wall coming from the north to south

[4] this load consist of flour the soil and lay between 4 stone ^{load} loads [2] [3] and it is very soft to use



[4]  a piece of flour has red color plaster

JK

EI 12.6.88

[2]

just one lug jar

I Base



Bag I

21 Baday shards

[2]

just one lug jar the same amphora

(Bag 2)

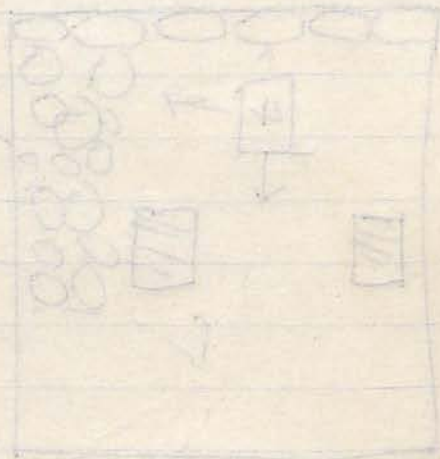
[2]

lug jar fragments

I time for the lug jar →

I Base

amphora toe



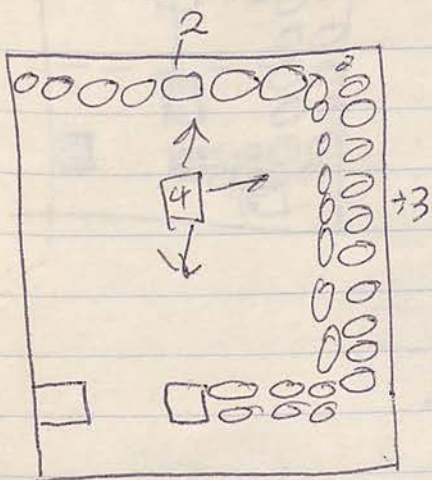
13-6-88

- 1- mdhee
- 2- M hamad
- 3- Amenie
- 4- Hadle-vaser
- 5- Hadle mahmod
- 6- Naema

E I-

4

We ~~are~~ continue the work on this locus. and the soil is soft and it is lay on the south & west to big stone standup. and perhaps is a doorway



JK EI 13.6.88

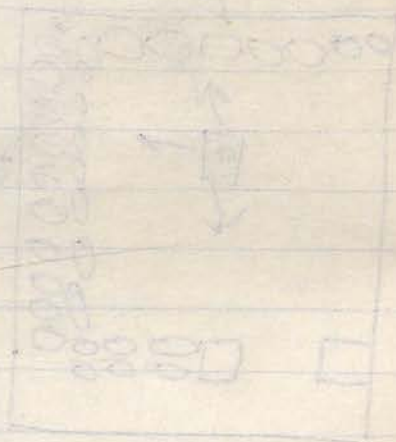
[4]

Cours war - Baday sherds

- 2 Rim fragment echinus half
- 4 Rim fragment flaring half
some of this has red color
- 6 Rim fragment cours war local
- 1 handle
- 3 Base fragment some of this the base is flat
- 98 B and it has a ring (concentric)

98 Baday sherds

[4] EI 13.6.88 Bag 2
I big jar fragments



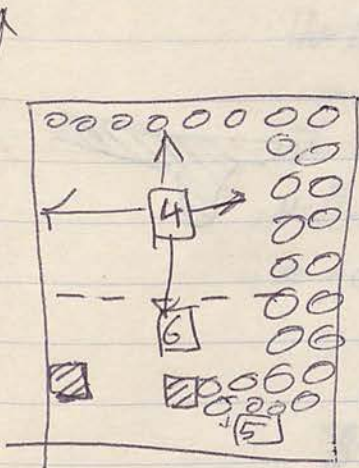
JK-EI

14-6-88

1. Mohamed 2. M. Hamad 3. Hadleh - 4. Hadleh Mohamed
5. Amene - AB sent = Naheema.

[4]

We continue the work on this locus which a lot of stone has it and between the stone ~~to~~ a very soft soil



[5]

This locus consist of from the wall stone 1 coming from the East to West. and in the middle it there are door way

[6]

This locus consist from the the capil floor and it has color white and a ~~shy~~ grey mixed and it is seemd this a floor is a later in and it is ~~ex~~ cupation

and this a floor the same cupation of the trachald which connect between toupiher door way

Threshold

E I

14.6.88

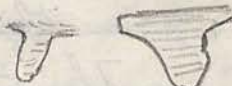
4

Courts Ware - Body shards

I Rim fragment echinus shell.

I Rim fragment Courts Ware jar

4 Bas fragment Courts Ware



2 fragments Hooping Bowl

94 Body shards fragments

I fragment painted a red color

15-6-88

- 1- Medhee - 2. mhamad - 3 Hadleh Almaser - 4 Hadleh mhamad
- 5- Ameneh - 6. salme -

E I. [6] We continue the work on this locus which consist of the level floor and a part the mided from the reliably stone the doorway it mid space 120 cm and ~~each~~ check pillar from doorway it a length 86 cm. and the E stran stone pillar has line for door ~~that~~ closed - a gam dived the square to parts the southern 220 x 450 cm.

the floor which locus [6] second making from the north to south and the lowest point are judged the trabald

[6] [4] west slope wall Bades front

Elevation from	E1, 4	179/1	
plaster floor (highest)	- 1.83m		*
threshold	- 1.92m		

from peg at E1, 4
 top of peg
 height of peg 0.28m.


92
 83

 9 cm.

EI 15.6.88

6

Courtwar. Badg shards

- I Rim echinus fragment, it shewing on a black couler from out side, and a red couler inside
- I Rim flaring fragment, painted a red couler
- I fish pit 



F Base fragment Baul



West Slope Ware body fragment



Badg shards



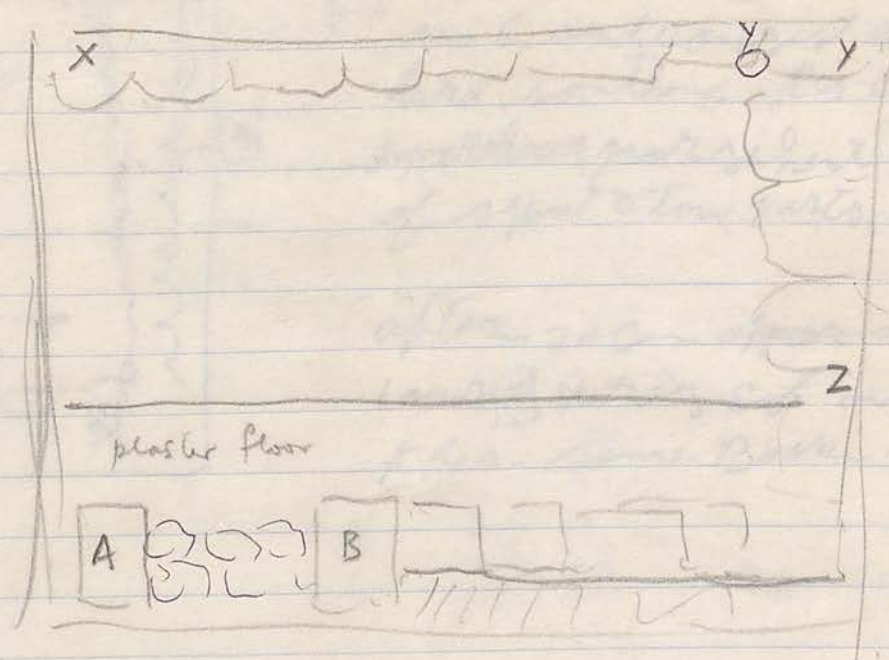
E1

179/1

15.6.88

Elevations from A3, 4 height of peg 0.28m

N
↑



Elevations of wall etc.

x1 highest -0.30

x2 lowest -0.97

y1 highest -0.49

y2 lowest -1.02

Elevations from A3, 1 height of peg 0.33

Z highest || lowest -1.57

A1 top of jamb -0.93

A2 bottom of jamb -1.80

B1 -0.65

B2 -1.60

87 cm

95 cm.

A1, A2

from A3, 4

tumble left in doorway to prevent jamb collapse

beaked or random tumble?

12.2.21
1911

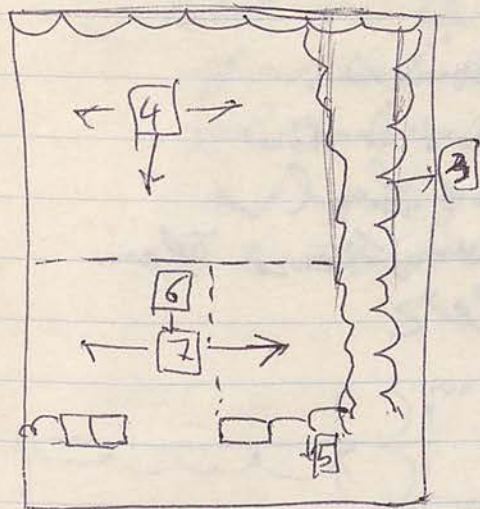


1911
1911
1911

1911
1911

1911
1911
1911

1911
1911
1911



[7] This lower layer beneath layer
 no 6 and consist of soil
 hard something it is Couler & Brans
~~spatch~~ patchier part is in the south
 of square low parts and go down

after 20cm ~~at~~ a needed
 lower [7] were soft and a choy grey
 it has - some Bone.

E I

15.6.88

7

cours war

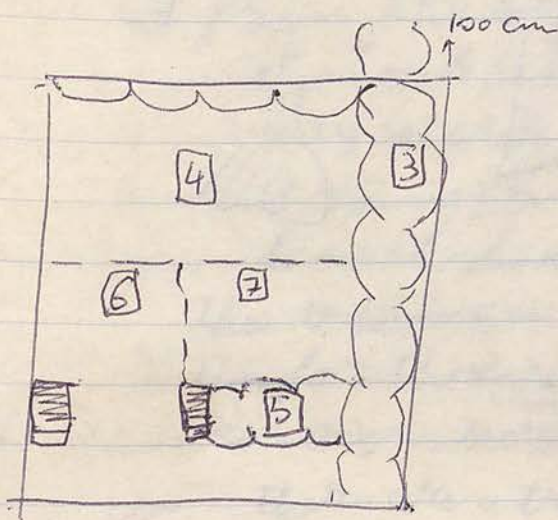
- Bada shards

- 2 Rim fragment echinus
- 3 " " cours war
- 2 " " flaring bowl
- 2 Bas fragment, some from them
painted in black colour

133 Bada shards

16-6-88

- [7] we continue go down on this locus (a lot of pottery
has it and the soil very soft between it a lot
of a small stone and a loon, and the wall extreme
which locus no 3 has appeared continue go down
and I dig on north it something it is continue
to the north.



- [7] [A] lamp? ✓
 [7] [2] a piece from lamp
 [7] [3] a pottery weight?

JK EI 16.1.88

7

coursware Body shards

Bag I

- 9/Rim fragment coursware
- 2 rim flaring fragment
- 1 rim e-chined fragment
- 1 rim fragment a storage jar
- 1 neck with body fragment

3 Basis fragment



177 Body shards

1 handle fragment



Bag 2

7

EI

- 9 rim fragment coursware
- 3 " " e-chined
- 1 " " flaring
- 6 Basis " coursware
- 1 Handle " for small jar
- 148 Body shards

Report about Tou squares D3 EI

16-6-88

D3 the walls

in square D3 we have the Tou walls. The ~~first~~ first
~~one~~ one coming from the north to south on the middle
it is doorway consist of frame Tou pillars to
stone and each each pillar had curved
from the east side where the doorway is
it turned to the E side, and it is seem the doorway
way is shale with a big stone (some from this
is coming from the out side perhaps from
tempel because it is look a similar the Tempel stone
this ~~to~~ ~~stone~~ close to doorway came in another
time for the doorway (so our doorway became
more ^{narrow} narrow and used a gem.

threshold

there are a threshold consist of frame three
stone, and we notice there are not
contenous to wall beneath the threshold
just some stone perhaps a foundation to
the wall.

and it is lay on front of frame the E side to stone
Bopment on a level, and we there are from
the extreme of to this wall painted from plaster
and there are to big stone lay on Tou side
of the doorway, and perhaps these big stone
for ~~to~~ end Tou wall the best
one. coming from the north

from the square. E. and the second wall
the wall coming from the south from the
squares D1 and D2.

a thing this ~~was~~ our first wall on the square
D3 is open on the street immediately.

The second wall on D3

the second wall on D3 lay on the south of
square. and it is coming from W-E.
and crossing the locus wall v.03 -
and we don't know where are continuous
to the west or not. because the end square.
and its height - 120 cm from Bedrock
to the top, and foundation of this wall the
same foundation to the first wall locus v.03

Layers on the square N.0D3 =

we have four layers on square D3

- 1] This layer dipost on the surface and
- 2] This " " " este the wall course³
- 4] This layer consist of a lopal stone floor
este lay wall 3.

E I

Walls

We have two walls on the square EI
the first I is coming from E to W - and
it (caus) no [B] and this locus has doorway
from two pellers one from it has line
for the door. and between their pellers
threshold.

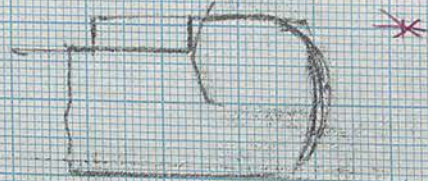
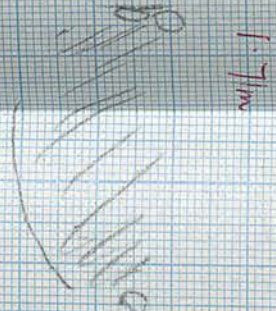
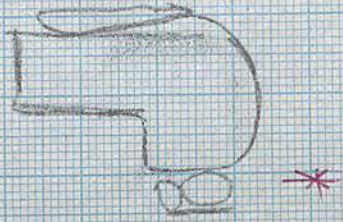
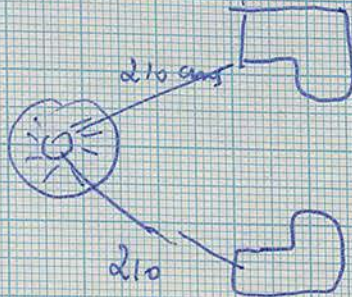
we notice this this a wall go down and tacked
the wall which coming from the north
to south and beneath the threshold
the wall locus [B] is entering

2
1
2

46 1523

K&E 10 X 10 TO THE CENTIMETER 18 X 25 CM.
KEUFFEL & ESSER CO. MADE IN U.S.A.

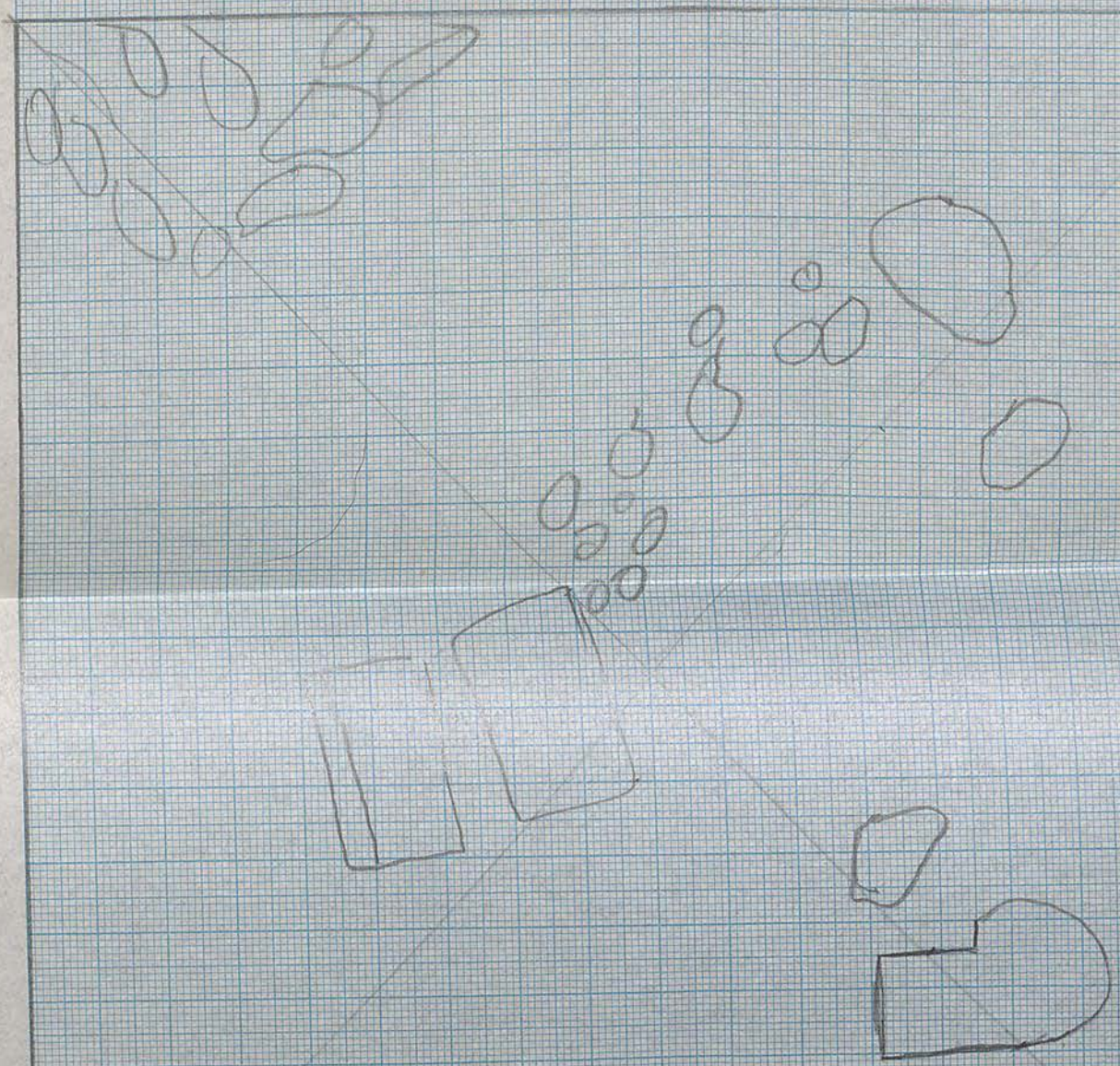
See Field Book 1-6-88



'at end of lens 3

21-5-88

5-K. D3



46 1523

K&E 10 X 10 TO THE CENTIMETER 16 X 25 CM. KEUFFEL & ESSER CO. MADE IN U.S.A.

100-20
100-20
100-20

100-20
100-20
100-20

100-20
100-20



46 1523

K+E 10 X 10 TO THE CENTIMETER KEUFFEL & ESSER CO. MADE IN U.S.A.

D3

208/3

22-5-88

