

P. J. CONNOR



STUDENTS NOTE BOOK

No. 593

JEBEL KHALID 1988

DOMESTIC QUARTER

Book 2

209/3
[D3]

D4

208/4

D7

208/7

A3

B1 (over)

9.6.88

D 4 [11] Bag 2.

17 bare frags coarse wave bowls.

5 m frags flaring bowls

6 m frags coarse wave jars

16 m frags assorted echinus bowls

1 m frag gray wave bowl

8 m frags white bowls

10 body frags light brown to tan; narrow striations

9.10.88.

A 3 [11]

Small lot coarse wave body frags

3 bare frags

3 m frags CW jars

1 m frag echinus bowls

* Plus, I think, is the finished S end - not a corner

D4

A3

Thursday 9 June 1988

Weather sunny, cool breeze at first

The days become exceedingly hot from 11am.

Workers 12

Duma, Abd, Amouna, Hassa, Hadle, Lbanaea, Sabha, Ichelid
Abdullah, Hadle, Haje, Hadle Duma.

Work continues in D4 11 that is the two metre spit at
the south of the trench.

3 workers join Dora's B1 temporarily

7.30 am Begin on clearing surface of A3

D4

The NS wall in D4 seems better built than those there
around it even Wall 1 of D1. It turns a clear-cut [?]
and strong corner * but does not continue into ~~D1~~ D1. At this

where is
this now

point the winter rains of 1987-88 have severely eroded the
west wall of the trench D1, but even then there is no
sign of D4 NS wall. Its E face lies within the bank
so its 'preserved' width is approx 0.72m. At its SW corner
it is ~~now~~ c. 0.92m high, in 3 solid courses. There is
soil or mud packed between the blocks throughout. Even
where bedrock is higher at the N end, the wall rests on
a few centimetres of the hard red soil (immediately above
bed rock)

→ possibly the "doorway" at south? yes.

9.6.88

D 4 III

- 11 rim frags notched bowls
- 1 rim frag (+ body frags) cooking pot.
- 16 rim frags coarse ware bowls
- 1 rim frag gray ware bowl
- 2 joining rim frags gray ware spout
- 7 rim frags coarse ware jars/bowls
- 1 small amphora toe
- 3 rim frags flaring bowls
- 2 handle frags
- * 4 frags t-c figurines
- 1 body frag handle: striations

9.6.88 D 4 III bag 3

- 4 base frags coarse ware bowls
- 2 base frags coarse ware bowls one cone black
one cone red circles, interior
- 2 rim frags flaring bowls
- 1 amphora toe
- 6 rim frags echinus bowls
- 2 rim frags notched bowls

D4

9.6.88

At the SW, against the EW wall, the bedrock has been sharply cut to form a foundation trench for the EW wall. It is not absolutely vertical; at the top it is approx 0.38m wide. This wall too rests occasionally on the ^{hard} red soil. The EW wall is approx 1.63m high to the topmost preserved course

Between the EW wall (inner face) and the corner of the NS wall it is 0.89m

The depth of deposit from above the preserved height of the NS wall to the bottom of the higher NS wall which is built on soil, is 0.60m.

From the bottom of the upper ^{B+} NS wall to bedrock (thick) this slope from N to S is 1.51m at a point mid-way in the trench.

The lower NS wall is made of consistently larger blocks than other walls around. It consists of 3 courses with 2 stones of a fourth course at the southern end against the E wall of the trench.

Peterbach, where is the plan?

9.6.88

E1 2 or 4 acc. to Radi

medium wt coarse ware body frags

6 base frags coarse ware bowl's

1 base frag gray ware bowl

1 amphora toe frag

1 rim frag coarse ware jar

1 rim frag echinus bowl

2 frags r5 (body)

1 rim frag r8. two groups.

MB

Saturday 11 June 1988

E1 (Radi) 179/1?

Work continues in this area within the walls that lie to
N and East of Trench 208/3: locus 2?

Weather sunny, still.

Workers 6

Mdhey, Hamad, Hadle Mahmoud, Anwa, Naelwa, Hadle Nasr.

11.6.88

$$E1 \quad \boxed{2} = \boxed{4}$$

Small wt coarse ware

3 2 base frags coarse ware bowls

3 2 handle frags

2 rim eckinus bowls

1 rim coarse ware jar

1 rim frag flaring bowl.

ALL TOGETHER

DB E1

Thursday 9 June 1988

Weather sunny, cool breeze at first.

Workers 5 Hamad, Nalema, Hadle Mahmoud, Amina,
Hadle Nasr.

Work continues at the north end of the trench clearing soil which lay probably below large blocks of tumble in the NE corner. I have called this [2] but it may well be [3]. The soil is fine, light brown and slightly loosely packed with a fair admixture of small limestone chips.

The wall at the E boundary of E1 seems in 'direct' continuation with that in D1, the surface indications in D2 (inc. stone with trig point Δ) and with the remnants of wall at the N and S of the E of D3 - interrupted by the pavement.

Inspection today reveals that in D3 at the N of the E (just mentioned) the small stones are completely surrounded by much soil and must therefore be tumble. This will be cleared and the soil removed. This will show I think that the pavement continues further N and that a large limestone block will define the portico pavement at the N as well as the South. Note too that at the moment the N doorpost with the rounded exterior is not completely free of soil. In the original construction it must certainly have been free standing as it now ~~stands~~ its companion to the S. Note that 3 such stones were found in the centre of the trench giving at least 3 on each side the heights of each (at the rounded end) is 0.54 or 0.55

① E1

at the SE corner of the trench especially (against the walls)
the soil is extremely fine and loose and a yellowish
brown in colour.

The wall at the N has been cleaned to a good extent
though the NW corner is not cleared yet to the same level
as the remainder.

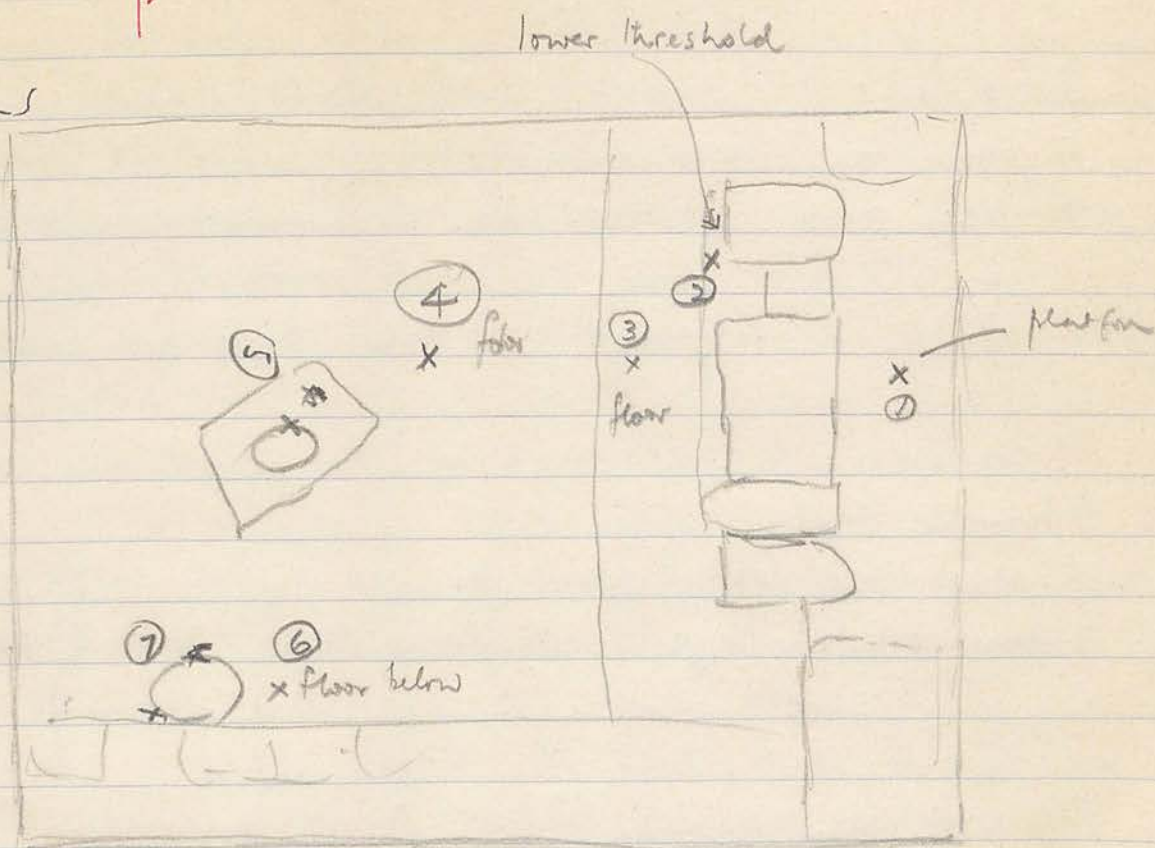
Very little pottery come today
merely a medium wt coarse ware etc

D3

208/3

11.6.88

elevations



- | | | | |
|----|--------|--------------------|---|
| 1. | 172.14 | street | |
| 2. | 171.97 | threshold top | |
| 3. | 171.79 | floor B | |
| 4. | 171.88 | " B+ | } |
| 5. | 171.91 | quern/post support | |
| 6. | 171.40 | lower floor | |
| 7. | 171.72 | oven | |

(Loc 11?)

11 base frags coarse wave bowls

1 base frag concentric \odot black points, interior

1 lip



pale buff fabric

3 handle frags

5 rim frags coarse wave jars

1 rim frag large coarse wave bowl



17 rim frags echinus bowls

1 rim frag (+ body sherds) cooking jar

4 rim frags flaring bowl

1 rim frag fine lg bowl



1 body frag gray/black wave ribs + incised //el lines

2 frags to figurines.

D4 208/4 Saturday 11 June 1988

Weather sunny, still breeze later. hvc.

Workers 4, Lbnanea, Hadle, Hasoa, Sabha.

D4 work continues in III in S. sector

a small amount of tumbled at -0.25 from D4,3.
we are at at depth of -0.54 from D4,3.

by 11 am, a central full of pottery. The soil continues very
loosely packed

After elevation of the few stones they are removed.

12.30. After several days of loosely packed soil we reached
a hard packed 'floor'. The fine brown soil is cleared
before proceeding later with the hard deposit.

At the S of this sector the wall which runs EW at
the S of D1 and the E part of D4 does not seem to
appear further cleaning probably tomorrow night clarify the

88.395	D4	II	11.6.88	frag t.c. figurine
88.396	D4	II	11.6.88	frag t.c. figurine

locus III : 2m to N of S pgs.

D4 11.6.88

III bag 2

medium wt coarse ware body sherds

1 rim frag cooking pot (+ body frags)

3 base frags coarse ware bowls

1 amphora toe frag

2 handle frags

5 rim frags flaring bowls

14 rim frags eckinus bowls

8 rim frags notched bowls

1 body frag lamp w. striations

1 rim frag

9

A3 11.6.88 J

small lot coarse ware body frags

3 rim frags notched bowls

2 rim frags eckinus bowls

1 tile frag

3 handle frags

3 base frags coarse ware bowls

1 big (weak) body frag

A3 B1 (Dura) Saturday 11 June 1988

Weather, Sunny still, breeze later, hot.

Workers Duma, Abd. Amouna, Hadle Duma, Khalid
Mhamed, Turkiya, Mahmud, Mahmud Duma (Sub.
Younis, ill), Hadle (Miles)

Work continues on clearing soil round tumbler immediately
below the hard top soil

1 pm photo B1 tumbler cleared ready for removal
photo A3 from East almost properly cleaned
end Roll 6 from East

Measure out 2m from E. To start removing stones
from W to E on the assumption that a wall, if any,
will run (as in other trenches) from N to S

12.6.88

E1 [2] or [4] see to R.

frags large amphora greenish tinge ?

179/1 (?)

Sunday 12 June 1980

E1

Went overcast at first brisk cooling breeze
Workers 6, Mdhey, Hamad, Amine, Naeema, Hadle Nabr,
Hadle Mahmood.

Work continues in the fine light brown soil at the NW corner
where there is a tumble of quite large stones

* Some large frags of amphora emerge immediately
7 am. an ^{88.310} amphora stand with moulding at lip and base
typical of amphora lips - almost intact except for large,
old, break at rim. Found at a point 3 courses
down from the preserved top of the EW wall at the N of the
trench

In the SW of the trench it seems that two gateposts are
being cleared. These will no doubt belong to the last phase
of occupation though they are not the upright type seen
here and there over the domestic quarter and in sq. D1 at
Sunday E

In the light brown soil are many limestone chips and
some larger stones of tumble [in part from crumbling
limestone]

10.30 am just south of find-spot of amphora stand,
2 large amphorae perhaps nearly complete. One is reddish
tinge and has lip and base and toe. Another, smaller, has
a greenish tinge. Base of large bowl

These are removed and kept in separate bags.

E1

12.6.88

11.45 profile of a gray fabric bowl in joining pieces
(new break - some of base missing)

in [2] though perhaps a little deeper in area where the
pieces of large amphorae were discovered.

Here is also the base + toe (holed) of another amphora.

A 3 12. 6. 88 [2]

medium wt coarse ware body sherds

5 tile frags

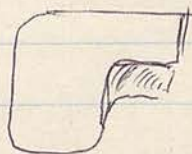
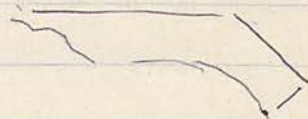
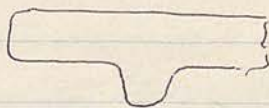
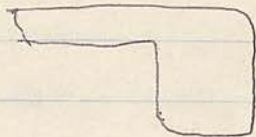
12 base frags coarse ware bowls

4 handle frags

7 rim frags coarse ware jars

9 rim frags echinus bowls

1 base frag pale white/green glaze
(glaze flaked off?)



Sunday 12 June 1988

A3 Workers Dama, Abd. Amour, Hadle Douma, Khalid, Hadle.
photographs of swept trench with tangle cleared, at 7.20pm.
Roll 7, -26 from E and N.
Measure out 2m from E and remove all small
and easy stones from the surface.

From the final surface cleaning
a fragment of tile
a spindle wheel of black polished stone

Work continues removing tangle, to locate a wall if
any. Structures are not immediately obvious

12.6.89

D4 12 Bag 1

- 14 base frags cork wave bowls
- 8 handle frags
- 14 rim frags echinus bowls.
- 5 rim frags notched bowls
- 1 tiny rim frag green glaze.
- 1 body frag rg.
- 2 lamp frags typical type.
- 2 rim frags cork wave jar
- 6 rim frags flaring bowls
- 2 rim frags bowls w. paint



2 base frags gray wave bowls.

D4

Sunday 12 June

Weather : overcast

Workers 4, Lbanaea, Hassa, Hadle, Sabha

Work continues in the W area of D4 within the 2m spit at the S of the trench.

The E-W wall at the S is apparent for a short distance and is then destroyed - at least on the inner face. The soil is light brown and fairly loosely packed. In the bank there are streaks of gray though I don't think I have detected much of this (if at all) in the horizontal stratig. as excavation proceeded.

B₂ 9m $\frac{3}{4}$ zenith of pattern

DW East. The section of D1 W has been drawn in case time permits the removal of (some of) the bank at the S of D1/D4 to investigate what happens to the lower NS wall of DW East

12.20 Corroded small bronze coin
also frag of bronze possibly ~ coin
Work progresses

D4 13.6.88 [11]

medium lot coarse ware body frags

1 body frag coarse ware 'jug', inc. complete ring handle

4 base frags coarse ware bowls

1 amphora toe

5 rim frags coarse ware jars

7 rim frags echinus bowls

3 rim frags notched bowls

2 frags burnt bone.

D4 13.6.88 [12]

small lot coarse ware body sherds

6 base frags coarse ware bowls

4 rim frags echinus bowls

2 rim frags notched bowls

2 rim frags gray ware bowls

2 rim frags small coarse ware pots

4 rim frags flaring bowls.

13.6.88 D1/D4 bank [1]

rice medium lot coarse ware body frags

5 base frags coarse ware base bowls

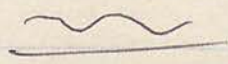
6 rim frags coarse ware jars

2 handle frags

1 amphora toe

4 rim frags notched bowls

1 body frag



1 tiny body frag by

incised /el lines

2 rim frags (1 bent?)

D4

Monday 13 June 1988

Weather sunny, strong breeze

D4 (II) work continues in the 2 m spit at south of

D4 West Strong breeze

The soil is light brown in colour

Workers 6: Lbnamea, Hadle, Hassa, Sabha, Abdullal, Haje.

D4 East / D1

A start is made on removing the baffle in order to expose the end of the MSA lower NS wall in D4 East.

13.6.88 A3 [2]

medium wt coarse ware body frags.

4 base frags coarse ware bowls

1 base frag fine plate

2 tile frags

3 handle frags

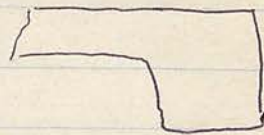
1 rim frag (+ body frag) cooking pot

2 rim frags echinus bowls

2 rim frags coarse ware jars (1 inc. frag. vert. handle)

1 rim frag bowl w. red paint

1 iron nail



A3 [2]

13.6.88

frag relief moulded bowl

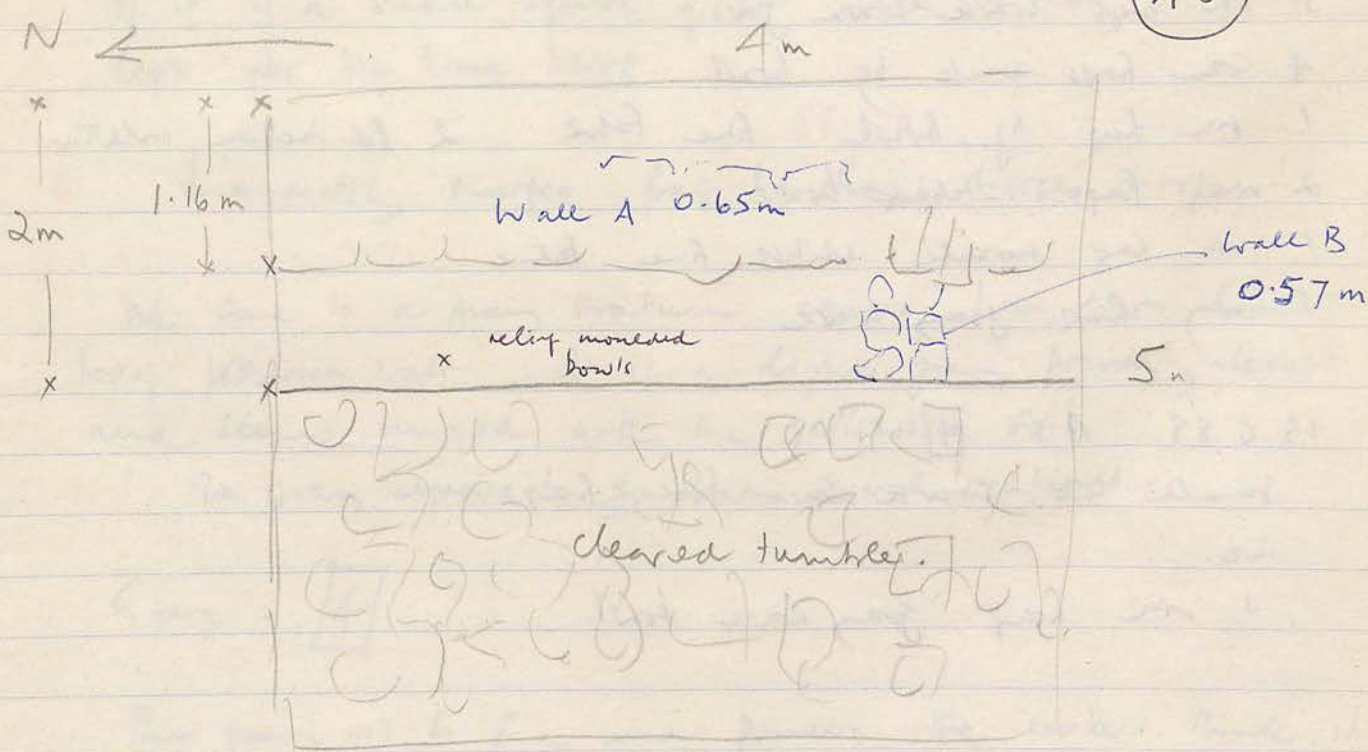
A3

Monday 13 June 1988

Workers: Duma, Abd. Amouna, Khalid, Hadley^{thls}, Hadley Duma.

Work continues in a 2 m. strip at the E end of the trench. It seems that there is a wall running NS but the construction is poor and I cannot think it 100% certain. In B1 the presence or not of a wall is even more difficult to decide. The alignment is different from that in A3 and it seems to have a wobbly trace.

In both A3 and B1 larger stones are beginning to appear W of the presumed wall.



7:15 am. The wall line is becoming clearer

- c. 2 courses down from topmost extant wall stones
- 3 frags (2 joining) of relief bowls

A3 13.6.88

2

medium wt cork ware body frags

1 enormous pitthos base, like a boss

18 rim frags echinus bowls

2 rim frags flaring bowls

3 rim frags cooking pots + body frags

1 body frag. stamped triangles

8 base frags cork ware bowls

4 handle frags

1 handle frag. rotellae red paint.

5 rim frags cork ware jars

4 rim frags ware by bowl.

1 rim frag by bowl fine fabric 2 //d incision, interior

2 rim frags notched bowls

1 rim frag handle white fine fabric

1 body frag gray ware.

13.6.88 A3 4

small wt cork ware body frags

inc

1 rim frag. gray ware bowl.

10.50 am end of [2]

at end of 3rd course from top of extant wall
large tumbler is cleaned and photographed
from N

= NW 8, 4-5

Subsequently, the tumbler is removed and the locus is [3]
In the tumbler is a mixture of small stone and quite large
stones.

The wall running EW is much clearer now. To the S
of it is a small square of soil which is red. This is
left for the time being.

88.379

* Immediately emerges frag to frag: horse's hoofs.

We come to a gray stratum approx 1 m down from
top of preserved wall. It is a light gray powdery deposit
and seems mixed with the yellowish soil.

The gray appears to go down several centimetres

Gray = [4]

The gray is so fine and powdery the workers think it
is like cement.

A3 13.6.88 [3]

w/te large lot body frags coarse ware

2 joining frags flaring bowl

1 base frag

2 rim frags coarse ware jars

1 amphora toe

1 handle frag

1 rim frag dark gray bowl

1 frag glass

* Several joining frags echinus bowl.

1 tile frag.

13.6.88

A3 [2] bag 2

Small lot coarse ware body frags.

1 rim frag large coarse ware jar (red-orange paint)

1 rim frag large coarse ware bowl

1 body frag polished gray ware

2 body frags cooking vessel

Friday 20 June 1953

1.
2.

3.



4.
5.

6.
7.

8.
9.

10.

11.
12.

13.
14.

15.
16.

17.
18.

14.6.86

A3

4

medium wt coarse ware body frags

1 base frag.

2 rim frags flaring bowls

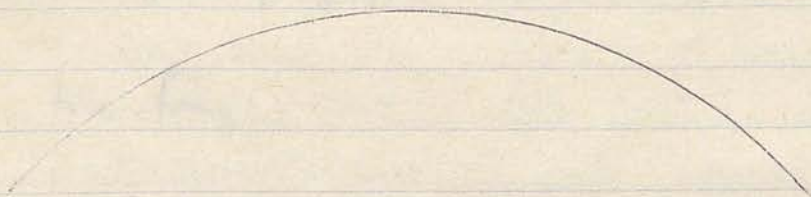
1 rim frag coarse ware jar

5 rim frags echinus bowls

1 rim + ~~handle~~ handle frag coarse
ware cooking pot



1 rim frag large notched bowl



A3

14.6.88

5

medium wt coarse ware body frags

5 base frags coarse ware bowls

1 base frag gray ware bowl

2 rim frags coarse ware jar

5 rim frags echinus bowls

3 rim frags notched bowls

* 1 rim frag little indented rim red paint

A3

Tuesday 14 June 1988

Weather Sunny, very strong wind, cold.

Workers 6, Duma, Abd. Amouna, Hadli Duma, Khalid, Hade M

Work continues on 4, the powdery gray stratum

7:10 am rim frag west slope bowl fine fabric
from powdery gray stratum 88.358

The plaster floor observable at the S of B1 does not seem to have continued as far as A3 where it is not observable in the stratigraphy

2 B3 it is quite thick and smoothed (though not level) on top.

At the N of B3 the plaster floor is observable in the stratigraphy

A3 red stratum is $-1.07m$ from A3, 2 $+0.08$
the EW wall is -0.36 from A3, 2 $+0.08$

the plaster floor in B1 is $-0.38m$ down from A3, 1 (B1, 2)

At N B1 the top of 'plaster floor' is -0.67 from A3, 1 (B1, 2)
A3

9 am close to both wall A and wall B the top of an oven is discovered inner diameter $0.66m$. The upper deposit is the crumbled sides of the soft terracotta. Beneath this appears to be a gray stratum. We shall clear out the bits of broken oven and then tackle the gray.

As the [unclear] [unclear]

the [unclear] [unclear] [unclear]

[unclear] [unclear] [unclear] [unclear]

[unclear] [unclear] [unclear] [unclear]

[unclear] [unclear] [unclear] [unclear]

8-28-23

[unclear] [unclear] [unclear] [unclear]

[unclear] [unclear] [unclear] [unclear]

[unclear] [unclear] [unclear] [unclear]

[unclear] [unclear] [unclear] [unclear]

[unclear] [unclear] [unclear] [unclear]

[unclear] [unclear] [unclear] [unclear]

[unclear] [unclear] [unclear] [unclear]

[unclear] [unclear] [unclear] [unclear]

[unclear] [unclear] [unclear] [unclear]

[unclear] [unclear] [unclear] [unclear]

[unclear] [unclear] [unclear] [unclear]

[unclear] [unclear] [unclear] [unclear]

[unclear] [unclear] [unclear] [unclear]

[unclear] [unclear] [unclear] [unclear]

[unclear] [unclear] [unclear] [unclear]

[unclear] [unclear] [unclear] [unclear]

[unclear] [unclear] [unclear] [unclear]

A3

14.6.88

10.10 am ϕ from N of RMI, Tr 1

ϕ RMI, Tr 2. from N. W. E
Roll 8, -19

A3

gray powdering: [4]

red [5]

over [6]

limestone chunks [7]

A3.

The red stratum divides laterally in white at S near
oven, and red at N.

The red at the north quickly turns into fist-like chunks
of limestone which seem to have no admixture of soil
there is no (almost) pottery in this deposit
This chip-stratum is 1.55m down from the topmost
preserved course of the wall at the very N of the trench.

The inside of the oven is not yet completed

1950

Jan 1 - 1950

Jan 2 - 1950

Jan 3 - 1950

Jan 4 - 1950

Jan 5 - 1950

Jan 6 - 1950

Jan 7 - 1950

Jan 8 - 1950

Jan 9 - 1950

Jan 10 - 1950

Jan 11 - 1950

Jan 12 - 1950

Jan 13 - 1950

Jan 14 - 1950

Jan 15 - 1950

Jan 16 - 1950

Jan 17 - 1950

D4

Tuesday, 14 June 1988

Weather Sunny very strong, cold wind

Workers 4. Sahba, Lbnanea, Hadle, Hassa.

Work continues; almost immediately the upper surface of a deposit white with limestone becomes evident. The light brown soil above this will be removed completely.

The white deposit will be 112 ~~is this band 111?~~ No.
= Lower floor

At the S of the trench a few more stones of the EW wall are evident at a lower level, seeming to imply some greater collapse or destruction at this point.

8:30 am stratum above white is completed i.e. 111

The white which is powdery and only 3 or 4 cm deep and lies above red, does not reach as far as the wall.

Next to the wall the soil is a dark red-brown (exactly like that underneath the deposit of powdered limestone).

112 We concentrate on this section next to the wall, i.e. about 0.46 m from the EW wall at the S of the trench.

Apparently bed-rock is quite close to the surface now.

Some few fragments of pottery emerge.

There are many fist-sized chunks of limestone mixed with the soil.

12 noon. Cleaning completed in D4 East. The completed trench shows the S spit (2 m) which has reached a white floor, clearly seen throughout, now that the surface has been brushed. The white surface did not

14.6.88 D4 [12]

Smallish WC coarse ware frags

2 pilnos rim frags

3 base frags coarse ware bowls

6 rim frags eckinus bowls

2 rim frags notched bowls

1 rim frag. large bowl



1 rim frag green glaze bowl
(glaze disappeared)

14.6.88

D4 [11]

medium frag coarse ware body frag

3 base frags coarse ware bowls

4 rim frags ^{large} coarse ware bowls

3 rim frags flaring bowls

2 rim frags coarse ware jars

4 rim frags gray ware bowl (also body frags)

4 rim frags notched bowls

1 base (soy. knob) gray ware unguentarium

1 rim frag coarse ware lip (lekythos)

3 frags t-c lamp.

* 2 joining frags t-c lamp

D 4

14. 6. 88

reach the front wall of the trench. The soil was softer throughout so in this narrow strip, so this was removed to bedrock. At the east the bedrock is appreciably higher than at the west. There is a sharp dip in the bed-rock

Photographs when seen at highest point.

At the E the EW wall is preserved only in one course

photos 12.45 pm Roll 8, -27

from N

far edge of trench

close up

from edge of 2m spit

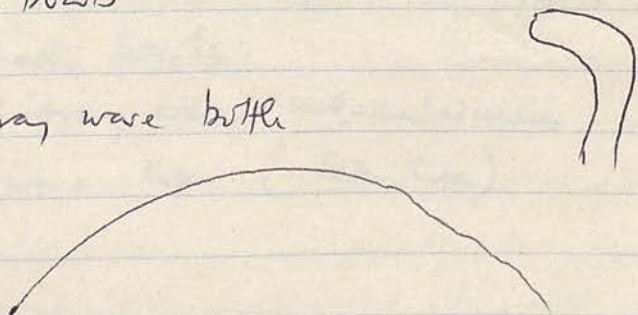
14.6.88 D1/D4 [3] bank (+gray) .. [3] + [4]
2 base frags coarse ware bowls
3 handle frags
3 rim frags coarse ware jars (1 w. red paint)
1 rim frag gray ware
1 rim frag notched bowl

14.6.88

D1/D4 [2] Limestone chips

5 base frags coarse ware bowls
6 handle frags
2 rim frags large coarse ware bowls
5 rim frags coarse ware jars
4 rim frags flaring bowls
* 1 body frag green glaze
* 1 tiny body frag bg
1 rim frag notched bowl
8 rim frags echinus bowls

1 large rim frag gray ware bottle



D4/D1

Tuesday 14 June 1988

Weather sunny very strong wind.

Workers (2) Abdullah, Haje (Khalid)

Work continues on removing baulk

The stratum is that full of limestone chips which extends round to the extant upper level of wall 3 in D1
= locus 2

That is the tumble from wall 3, which does not appear in the stratigraphy to the N, fell S

it started falling after the laying down of the gray stratum (gray at S) - gray at N is higher than the extant wall

12.10 pm.

The wall lying in part that beneath the baulk of D1/D2 does seem to have a squared off end as if it were the conclusion. How it could be a conclusion is difficult to see, unless it belongs to the same phase (not as wall 3) but to wall 1 and wall 2 of D1. That is it could be an internal doorway between two rooms. The rooms seen extraordinarily large

15.6.88

D1/D4 Dangle [3]

medium lot coarse ware body frags

4 base frags coarse ware bowl

2 handle frags.

frag frags cooling pit.

1 rim frag echinus bowl.

D1/D4

Wednesday 15 June 1988

Weather sunny. no breeze early

Workers 7

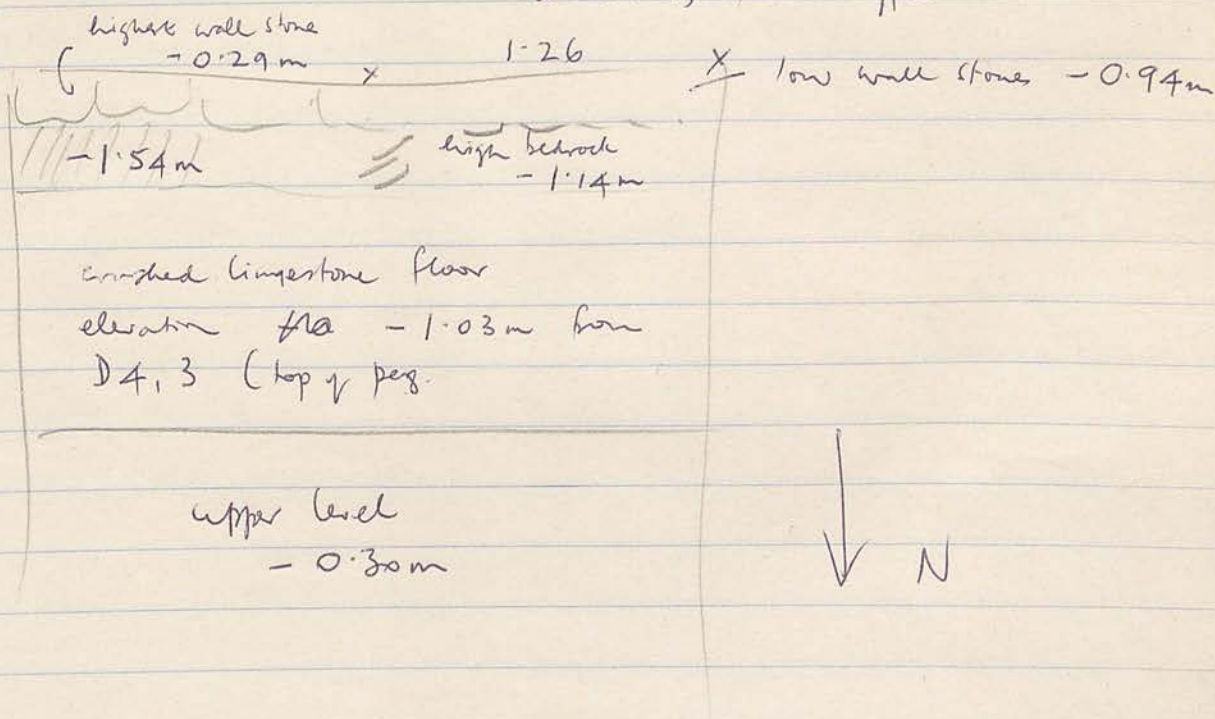
Sabha, Lbanaea, Ifansa, Hadle, Abdullah, Hage, Khalid

D1/D4 work continues on the bank: various strata are however mixed by random nature of removal of soil.

Cleaning takes place of E wall of D1 which has never been properly cleaned.

D4E

elevation from D4,3



The height of the peg at D4,3 is 0.18m

The length of the wall at S where it is only one course high is 1.26m from SW peg of actual trench (not the square)

15.6.88 A3 [8]

medium wt coarse ware body frags)

including

* a number of frags of coarse ware pot-

3 base frags

1 rim frag flaring bowl

1 handle frag.

all frags kept

15.6.88 A3 [7] Limestone chunks

small wt coarse ware body sherds

3 base frags coarse ware bowls

5 rim frags coarse ware jars.

15.6.88

A3 cleaning round oven

very small wt coarse ware frags)

1 base frag

1 rim frag c.w jar

1 rim frag notched bowl

2/3 bone frags

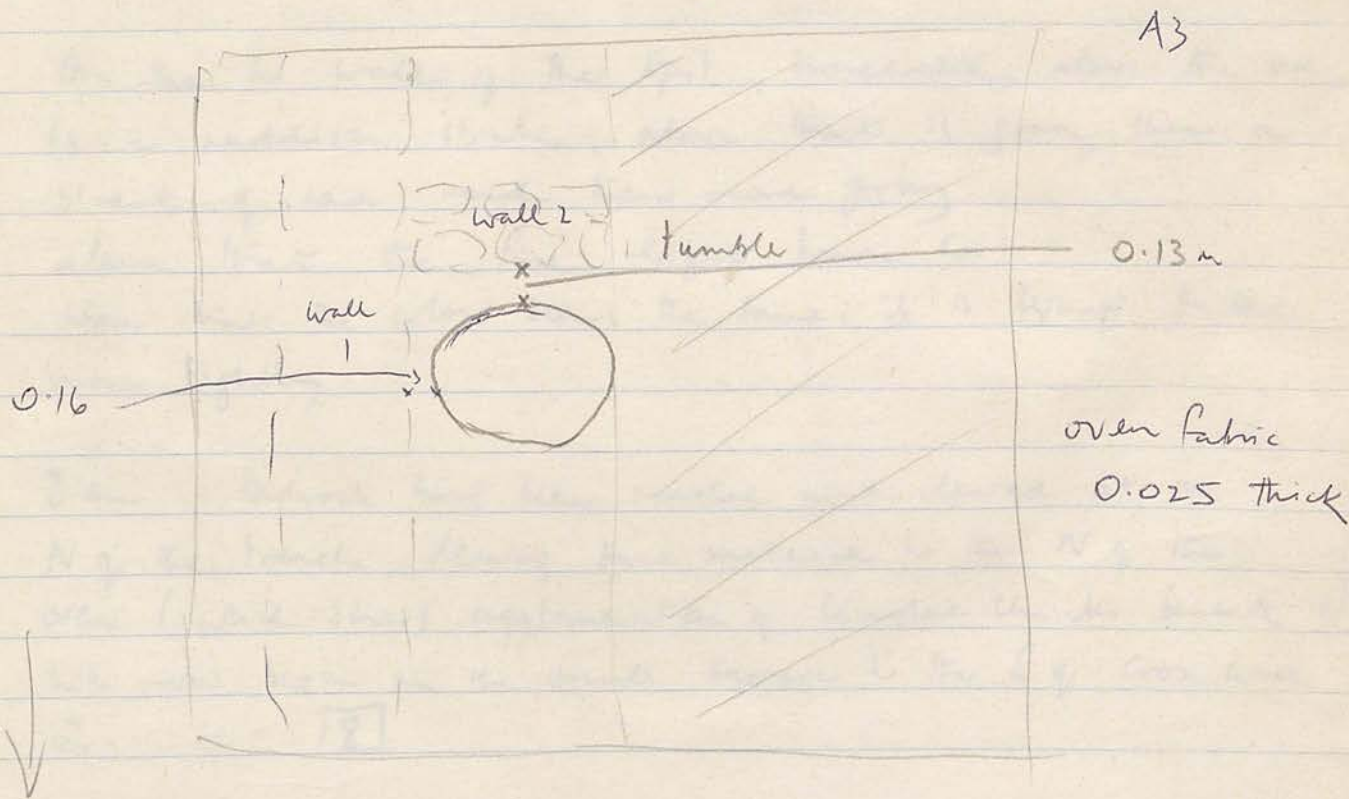
A3

Wednesday 15 June 1988

Work continues at N end of trench; there are still numerous limestone chips, but beneath them is a considerable concentration of bone at 1.67 m down from the topmost preserved wall stone at the N of the trench

This is leaving the oven (or will eventually) a bit high and dry

The soil is light brown in colour



The oven is 84 cms down from the height of wall 2

The depth at the far end of the trench at N is much lower than the top of the oven

A3

15.6.88

The greatest preserved depth of the oven baled clay is 0.18m
The fabric is burnt dark gray at its bottom third
(approx 0.06m) There is gray soil within the oven

The heavy deposit of gray lies above the oven level

The bottom of the oven is filled with the fist-sized chunks of limestone observed at the N of the trench

On the W wall of the Spit, immediately above the oven, is a reddish strata, above that is gray then a streak of red and then more gray above that the fine light brown soil. above that the colour seems the same; it is perhaps packed more tightly

8.11m Bedrock has been reached and cleared at the N of the trench, leaving some material to the N of the oven (which shows agglomeration of limestone chunks beneath it)
We now begin on the small square to the S of cross wall 2. = 8

1870

The first thing I did was to go to the
the first thing I did was to go to the
(Copper Lake) but it was not
the first thing I did was to go to the
the first thing I did was to go to the

The first thing I did was to go to the
the first thing I did was to go to the

The first thing I did was to go to the
the first thing I did was to go to the
the first thing I did was to go to the
the first thing I did was to go to the
the first thing I did was to go to the
the first thing I did was to go to the
the first thing I did was to go to the
the first thing I did was to go to the
the first thing I did was to go to the
the first thing I did was to go to the

The first thing I did was to go to the
the first thing I did was to go to the
the first thing I did was to go to the
the first thing I did was to go to the
the first thing I did was to go to the
the first thing I did was to go to the
the first thing I did was to go to the
the first thing I did was to go to the
the first thing I did was to go to the
the first thing I did was to go to the

187

A3

15.6.88

The thick deposit of limestone chips seen at the N of the trench was no doubt laid down purposely to level off and provide for a floor. The oven is then associated with this occupation since it rests directly on top of the limestone chips.

In B1 the lower courses seem to be of huge (rotting) limestone blocks and also a later fluted column drum ~~reused~~

Since the oven is situated in a corner close to both walls the EW wall must belong to the original occupation here but this occupation, like that of B1, is at a time when some public, columned, building was in a derelict state

The soil in [8] is a yellowish brown, rather fine and quite damp

Towards the N of the trench the limestone chip stratum is 0.61m deep at its deepest, ranging to 0.49, to c. 0.53m beneath the base of the oven

Above the limestone chips, a stratum of very fine powdery soil 0.25m deep. Above that the gray stratum 0.17 near the oven and 0.30m deep in the N wall of the trench

1902

The first part of the book is devoted to a description of the various forms of the verb 'to be' in the different dialects of the English language. It is a very interesting and useful work for those who are interested in the history of the English language.

The second part of the book is devoted to a description of the various forms of the verb 'to do' in the different dialects of the English language. It is a very interesting and useful work for those who are interested in the history of the English language.

The third part of the book is devoted to a description of the various forms of the verb 'to have' in the different dialects of the English language. It is a very interesting and useful work for those who are interested in the history of the English language.

The fourth part of the book is devoted to a description of the various forms of the verb 'to go' in the different dialects of the English language. It is a very interesting and useful work for those who are interested in the history of the English language.

The fifth part of the book is devoted to a description of the various forms of the verb 'to come' in the different dialects of the English language. It is a very interesting and useful work for those who are interested in the history of the English language.

The sixth part of the book is devoted to a description of the various forms of the verb 'to see' in the different dialects of the English language. It is a very interesting and useful work for those who are interested in the history of the English language.

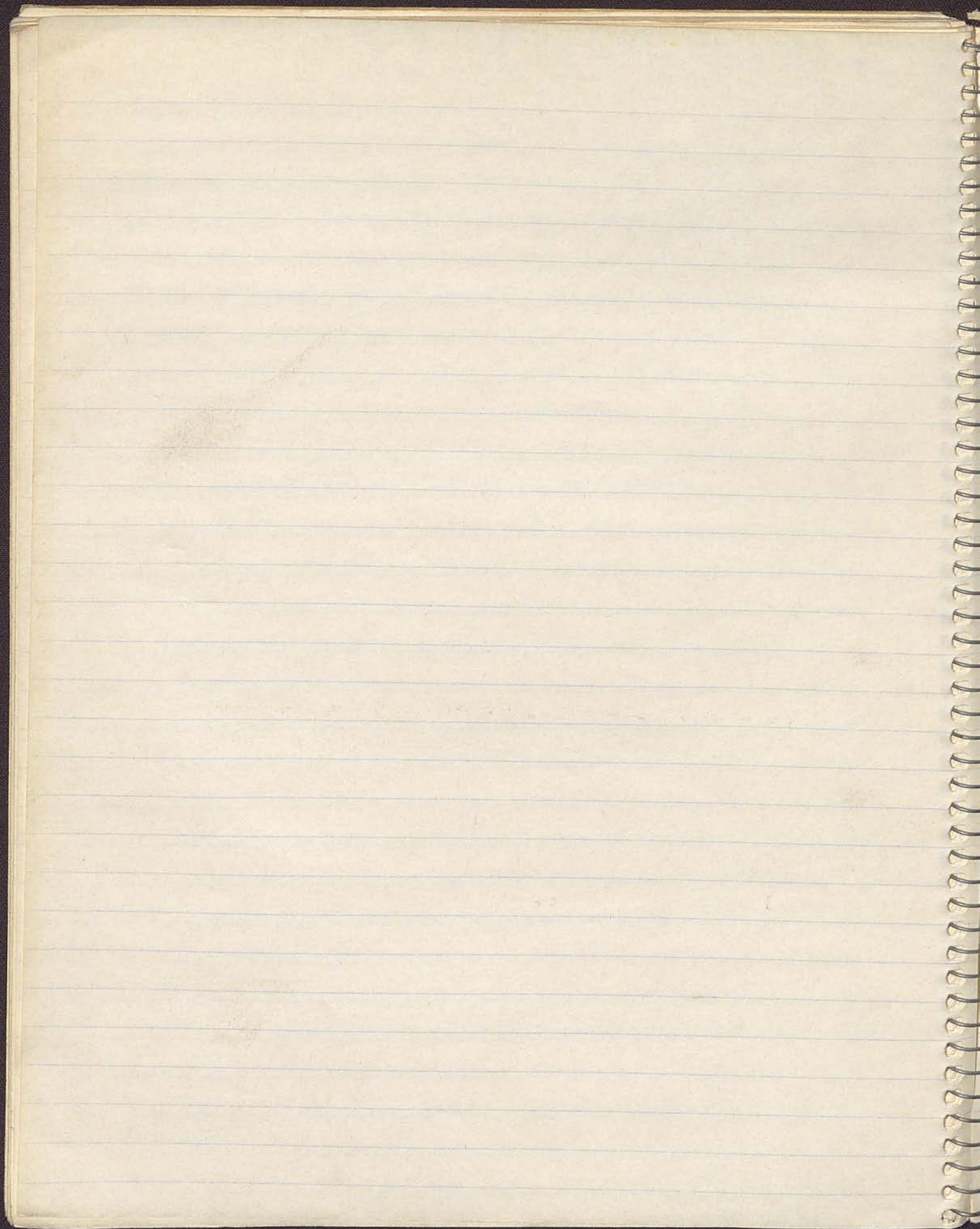
A3

15.6.88

After cleaning oven and surrounds and sweeping down some of the deposit of limestone chips, photographs taken from N from inside trench showing EW wall (wall 2), the oven next to it, the limestone chips that form the bottom of the oven, and the thick and deep deposit of limestone chips. Shots also taken from top of trench from N and from W.

Roll 8, -33

The rim of the oven has not been properly cleaned because the sides would only collapse like in D3



Thursday 16 June 1988

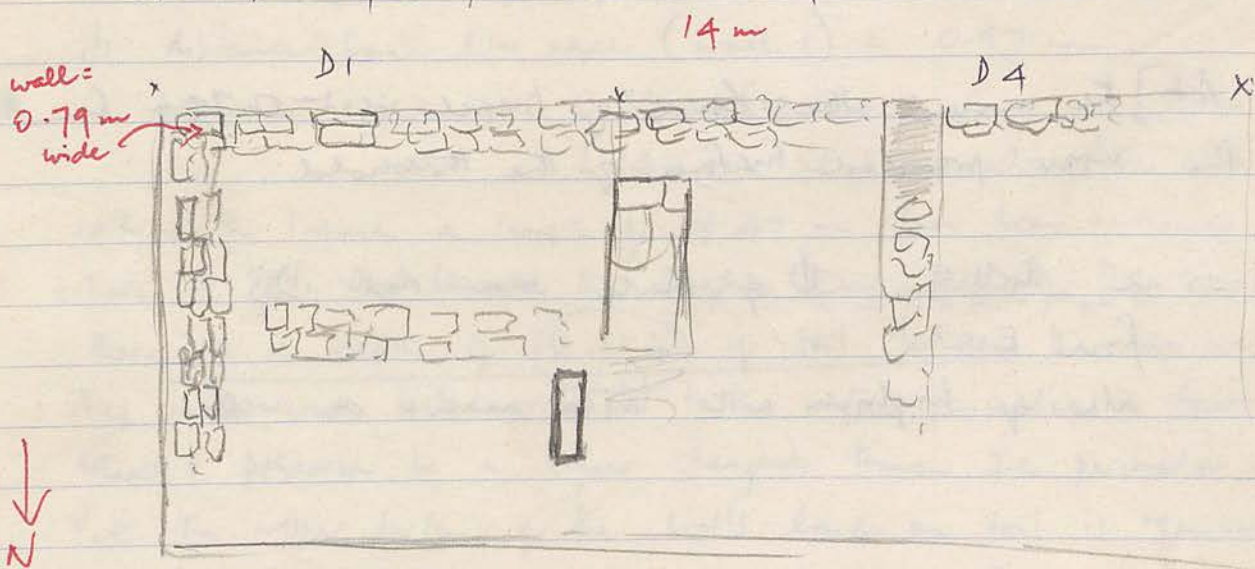
D1 D4 D7

Weather sunny cool breeze

Workers 7 Lbanaea, Hadle, Hassa, Sabha, Abdullah, Khalid, Haya

Work continues on general clearing of walls and floors of D1 and D4.

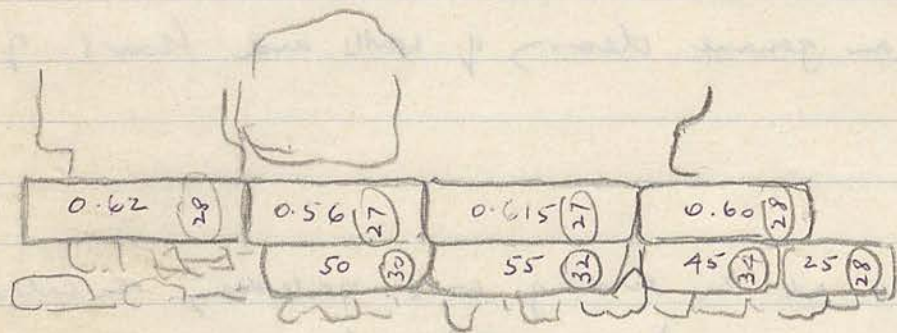
D7 Exploration at the end of work yesterday revealed that the EW wall of D1 and D4 had not been properly traced and that it did in fact continue beneath the threshold which projects forward a little to the South. The soil is scraped from the wall, the stones cleaned.



From SE corner of wall one west to the edge of D7 the EW wall is a continuous 14m. with a doorway as far as known only that in D7. In this big room there can be no NS wall ~~but~~ except in the bank between D4 and

D7

Under the threshold of the doorway are reasonably well cut blocks (4) in contrast to the field stones that form the walls to E and W



The projection of the threshold is about 11 cms (0.11 m) though at the W it is a mere 0.08

At the moment the level of trench is -0.79 m from the upper preserved surface of the threshold.

8.05 am. Roll 9, Φ of plates near door D3 from E.

also of triglyph with micro-macro as well

16. 6. 88

D7, except for the wall recently cleared on the bank between D1 and D4.

N/S? ~~EW~~ wall of D1 is 0.79 m wide. or 0.64 m wide
yes. " wide as 0.82 m towards the north of D1
and approx 0.82 m at the SE of D3. For a little space
here the wall is doubled S of the rounded doorpost which is
set back from the wall running up through D1, D2 and the
very south of D3.

NB There seems to be plaster on the wall to the N of the
N doorjamb in D1? must be D3

The lower EW wall in D1 = 0.58 m.

The wall NS with the squared end 0.68 m.

its distance from EW wall (wall 1) = 0.97 m.

* is preserved height is 0.87 m. (i.e. low) [course higher
1.14 m on SE corner where there is a

=? within the trench a length of 2.47 m has been uncovered from
where it lies ~~that~~ beneath the higher EW wall of D4.

There is a depth of 0.41 m of soil between the two walls.

This inner wall (belonging?) to the outer perimeter is ~~lower~~
preserved to a lower height than the perimeter walls.

? The upper surface of the walls laid on soil is equivalent
to the upper surface of the outer perimeter which is built on
bedrock. It is possible that these walls were rebuilt at a
later time equivalent to the walls resting on soil. There are a
few rocks which jut out, at SE wall one and opposite
the squared off wall.

11.11.11

The first part of the paper is devoted to a discussion of the
 various methods which have been proposed for the determination
 of the rate of reaction between a radical and a molecule.
 The most common of these is the method of initial rates,
 which involves the measurement of the initial rate of
 reaction for a series of different concentrations of the
 reactants. This method is simple and straightforward,
 but it is often difficult to obtain accurate values for
 the initial rate, especially when the reaction is very
 fast. Another method is the method of half-lives,
 which involves the measurement of the half-life of the
 reactant. This method is also simple, but it is only
 applicable to reactions which are first order with respect
 to the reactant. A third method is the method of
 integrated rate laws, which involves the measurement of
 the concentration of the reactant at various times and
 the plotting of the resulting data against time. This
 method is more complicated than the others, but it is
 applicable to reactions of any order.

In this paper, we have used the method of initial rates
 to determine the rate of reaction between a radical and
 a molecule. The results show that the reaction is first
 order with respect to the radical and second order with
 respect to the molecule. This is in agreement with the
 proposed mechanism for the reaction.

The rate constant for the reaction has been determined
 to be $k = 1.2 \times 10^6 \text{ dm}^3 \text{ mol}^{-1} \text{ s}^{-1}$.
 This value is in good agreement with the values
 reported in the literature.

The activation energy for the reaction has been
 determined to be $E_a = 12.5 \text{ kJ mol}^{-1}$.
 This value is also in good agreement with the
 values reported in the literature.

The results of this study show that the reaction
 between a radical and a molecule is a simple
 bimolecular reaction. This is in agreement with
 the proposed mechanism for the reaction.

A3

Thursday 16 June 1988

Weather sunny, cool breeze.

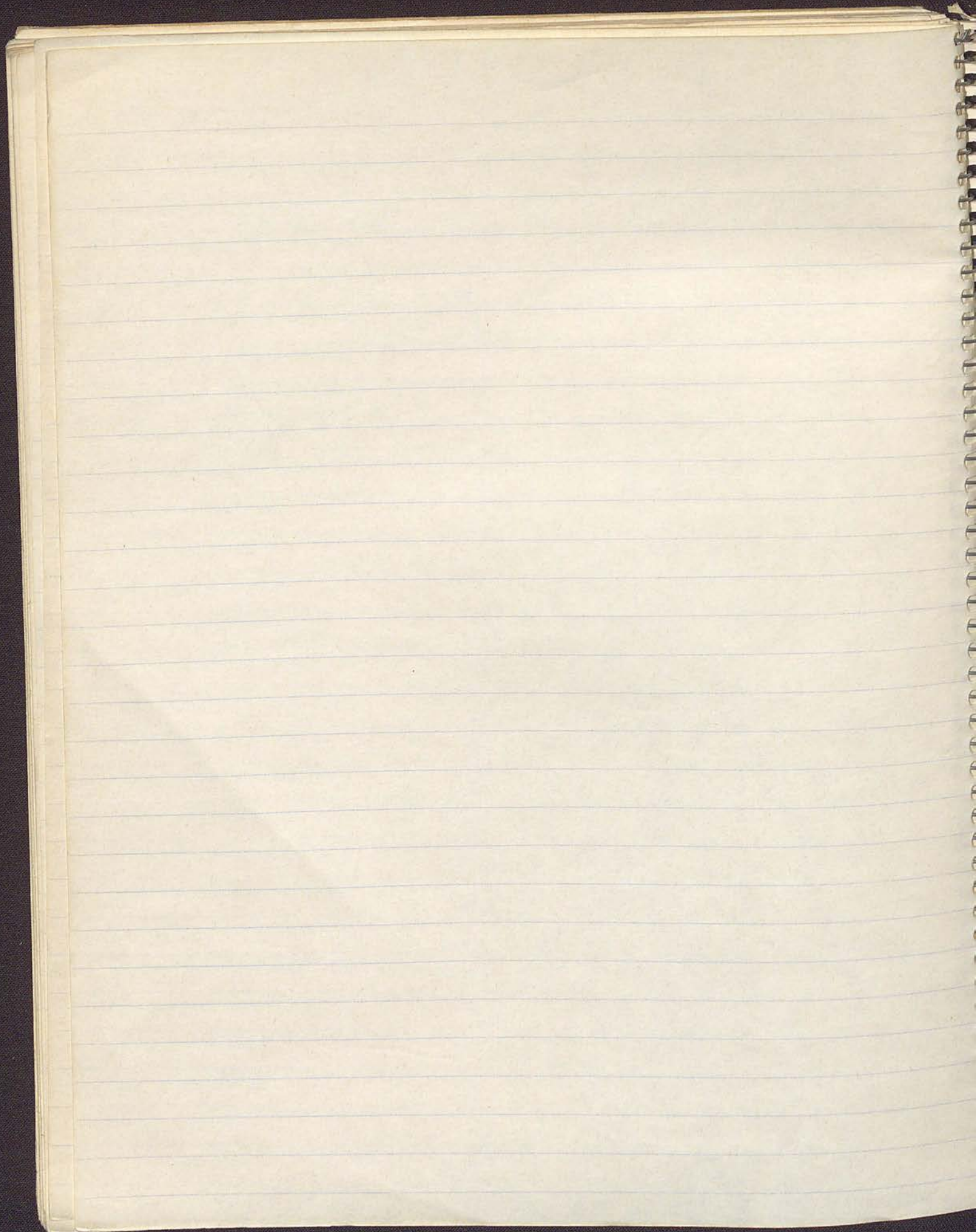
Workers 5: Juma, Amouna, Abd, Hadle Abdilleh, Hadle Juma

Overnight it appears that goats have got into the trench and broken the N rim of the oven.

Work continues now on the E section of the trench, the exterior of wall 1, removing rubble and clearing the stons of the wall proper.

General tidying up on the last day.

Attempts to reveal east face of NS wall
= locus [9]



8.6.88

E1 [4]

6 base frags coarse ware bowls

3 handle frags

4 rim frags coarse ware jars

5 rim frags echinus bowls

1 rim frag flaring bowl

* 2 joining rim frags + body frags rg bowl w. ribbing etc.