

1987  
JEBEL KHALID  
SONDAGE EPSILON  
GILLIAN SHEPHERD

BR 1.

Jebel Khalid  
 Scendage Epsilon

Weather: clear, sunny.

Workers: Hassan Hassan, Mtherah, Adjamuna, Branea.

6:45 am. Photos of trench laid out on 170587, 6m x 5m. Incorporates what appears to be a section of wall along the western edge, also two upright blocks, which seem to be in situ and are possibly a doorway. On the eastern side, near the north-east corner, is an old robber pit (ptd for diagram)

Photos: Roll ten; frame 5 - looking north, western half  
 frame 6 - looking north, western half  
 frame 7 - looking west, southern half  
 frame 8 - looking west, northern half  
 frame 9 - looking south.

170587, when trench was laid out, one somewhat broken but obviously worked block resting on the surface was rolled out.

7:00 am. Removal of loose stones from surface. At this stage, whole trench = one locus (□) Later loci divisions may be made if suitable. Topsoil removed next = stratum one.

Also surface sherding - mainly coarseware, a few fragments of red glaze, one with a pattern stamped on it: + also small piece black glaze.



Jebel Khalid  
 Scudage Epsilon

Weather: clear, sunny.

Workers: Hassan Hassan, Mtherah, Adjamura, Branea.

6:45 am. Photos of trench laid out on 170587, 6m x 5m. Incorporates what appears to be a section of wall along the western edge, also two upright blocks, which seem to be in situ and are possibly a doorway. On the eastern side, near the north-east corner, is an old robber pit (ptO for diagram)

Photos: Roll ten; frame 5 - looking north, western half  
 frame 6 - looking north, western half  
 frame 7 - looking west, southern half  
 frame 8 - looking west, northern half  
 frame 9 - looking south.

170587, when trench was laid out, one somewhat broken but obviously worked block resting on the surface was rolled out.

7:00 am. Removal of loose stones from surface. At this stage, whole trench = one locus (□) Later loci divisions may be made if suitable. Topsoil removed next = stratum one.

Also surface sherding - mainly coarseware, a few fragments of red glaze, one with a pattern stamped on it: + also small piece black glaze.

180587

Sondage Epailon ①①

- 1 tile fragment?
- 1 fragment fine red glaze, pale ochre fabric
- 2 coarseware base fragments
- 1 small handle fragment.
- 8 coarseware rim fragments. (one of orange fabric)
- fragmentary knob of hard grey fabric
- 3 rim fragments of simple bowls.
- 1 fine fragment of partially painted ware.
- 1 wall fragment orange fabric, weak red glaze interior and exterior
- 1 small handle fragment.

Surface sharding:

- 1 tiny fragment black glaze, non-lustrous, orange-(pink) fabric
- wall fragment of open vessel, red glaze, horizontal incision, orange-(pink) clay as above, vertical ribbing (inventoried object)
- + small lot worn coarseware sherds.

Jebel Khalid.  
Sondage Epailon.

10:45 am. Still clearing topsoil from around stones, moving downhill north to south. Small piece of metal found; its use is not obvious, it is a narrow strip which gets wider at each end.



11:35. Still clearing topsoil from around stones, nearly halfway down the trench. Some pottery, so far all coarseware.

→ continues until finish work 12:50 pm.

Pottery: surface sharding ✓

①① ✓

- + bone (2 fragments)
- + 1 metal object

Jebel Khalid.  
 Sandage Epsilon.

Weather: clear, sunny.

Workers: Mthrek, Dnanea, Adjamuna, Hassan Hassan.

6:30 am. Continue clearing topsoil from around stones.  
 Some coarseware.

7:50 am. Small piece of bone found.

8:00 am. 2 more pieces of bone + some coarseware.

9:40 am. Still clearing around tumbos. No walls evident yet. Are  
 some signs of what may be bedrock.  
 More bone fragments found.  
 Also fragment of one pointed roof tile.

10:30 am. 1 fragment with green glaze on both sides - Parthian?  
 \* Also fragment with red glaze.  
 + more bone fragments

11:55 am. nearly finished clearing topsoil, rest exposed stones will  
 be cleared thoroughly before photographs are taken.  
 More coarseware + few fragments of bone + of red glaze.

12:15 am. \* Piece of black glaze? Thin?

Sondage E 190587. II (1)

- 6 coarseware base fragments.
- 8 " " " "
- 5 fragments (4 = 2 joining) of coarseware, reddish fabric, <sup>new clay</sup> pink surface on interior
- 1 min fragment, poor black glaze, pale orange fabric
- 1 body fragment of open vessel, <sup>olive</sup> green glaze interior & exterior.
- 4 pieces lustrous red-glaze
- 1 handle fragment.
- 1 fragment (base?) red glaze interior, black glaze exterior.

Jebel Khalid.  
Sondage Episton

Pottery: II (1) ✓ includes 1 fragment green Parthian (?) + red glaze fragments + black glaze + also bone fragments (II (1))

Jebel Khalid.  
Excavation Epitaph.

Weather : sunny, slightly hazy.  
Workers : Mthareh, Branea, Adjamuna

6:30am. Most of topsoil now cleared from around stones; they are now being thoroughly cleaned for photographs.

Some coarseware.

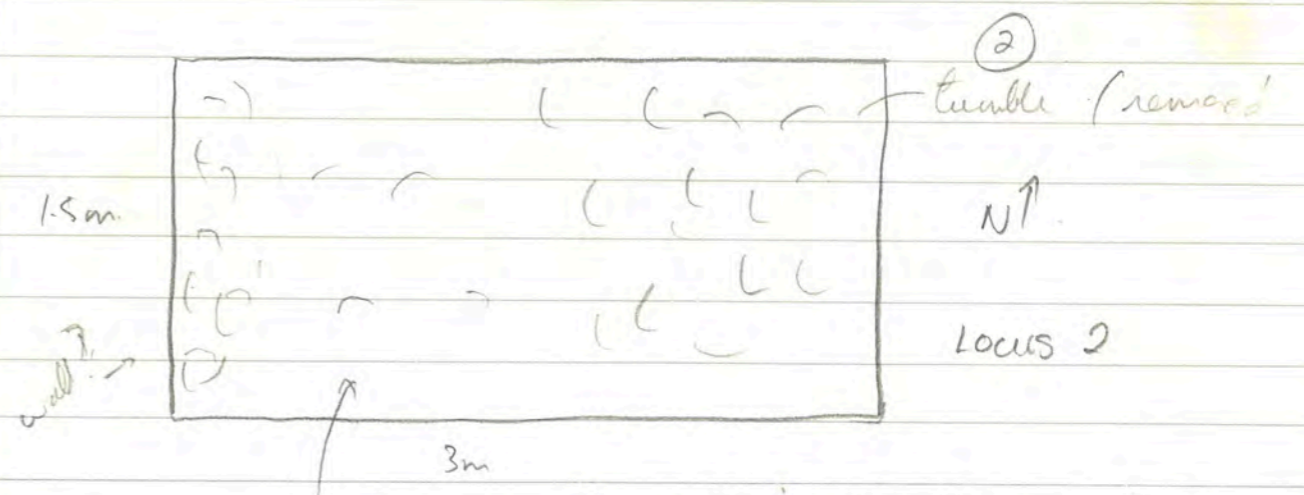
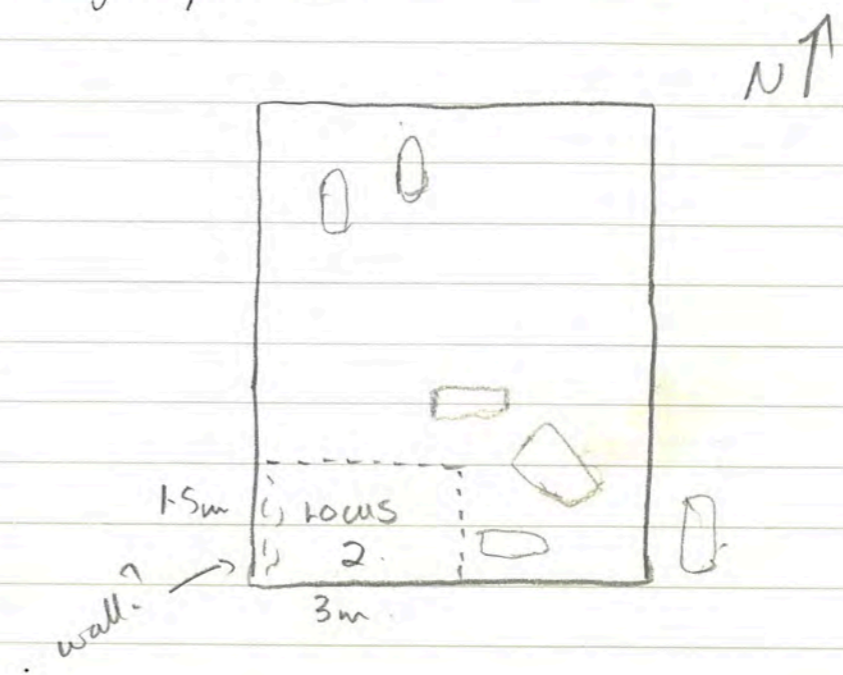
10:20am. Bone fragments.

10:35am fragment red glaze - rim?

11:30am. finish clearing. Photographs  
Roll len frame 25 : Eastern half, looking north  
" 26 : Eastern half, looking north  
" 27 : Northern half, looking west  
" 28 : Southern half, looking west.

11:45am. Start clearing loose, <sup>- stratum 2.</sup> surface stones. Decide to make locus 2 in south west corner, where there appears to be a wall which runs along the south side. Locus 2 1.5m x 3m. Removal of loose stones in locus 2, <sub>- stratum 2.</sub>

Jebel Khafid  
Sunday April



locus 2 made because there  
 appeared to be part of a wall in it, + it  
 was hoped that, if excavated, it would give  
 some clues to the rest of the trench.

few stones -  
 base patch  
 (3) here



200587.

Andage e [2] [3]: 3 coarse ware rim fragments, buff fabric, one with dusty pale orange interior

: 2 semi-coarse ware fragments, pale orange fabric, thin red glaze on interior  
: small lot coarse ware fragments.

[1] [1] ① : <sup>10</sup> ~~12~~ coarse ware rim fragments  
: 1 " " base fragments  
: 1 semi coarse rim fragment, brownish interior, simple bowl.  
: 1 coarseware handle fragment  
- 1 red glaze base (?) concave foot?  
lathered, buff fabric  
: small lot coarseware fragments.  
: 1 partially painted rim fragment, simple bowl.

Jebel Khalid  
Andage Epsilon.

12:15. Start clearing stratum 3 in locus 2. (fairly loose, grey-brown soil, with the odd small stone.

Pottery : [1] [1] ✓ incl. red glaze <sup>base?</sup> rim (?)  
: [2] [3] ✓ coarseware.

Bone : [1] [1]  
[2] [3]. (quite a lot of bone seems to be coming from here)

210587. Sandage Epsilon [2] [3] Bag 2.

- 2 rim fragment, simple bowl, partially painted, pale brown orange fabric

- 7 coarseware handle fragments, one attached to a rim, pale orange-brown fabric, one dark grey fabric

- 15 coarse ware base fragments, includes one small one with "nipple" in the middle

- 17 coarse ware rim fragments

- 6 semi-coarse ware rim fragments

- 5 very small fine red glaze body fragments; one with worn rubbing rubbing on it? 3 pale orange fabric, 2 very pale ochre.

- 1 red glaze base fragment, pale orange-brown fabric, glaze very worn

- 4 semi-coarse ware rim fragments, weak red glaze; one with 2 parallel incisions along top of rim. 2 pink-orange fabric.

- 1 very small very fine red glaze rim fragment, pale orange fabric.

- 2 semi-coarse ware body fragments, weak red glaze, one with thin incised line? Pale orange fabric.

- 1 semi-coarseware body fragment, pale orange fabric, weak black-brown + red glaze

- 1 coarse ware rim fragment, weak black glaze ext exterior, weak brown glaze interior, buff fabric

- 1 semi-coarse ware rim fragment, weak black glaze (with weak red underside rim?) pale brown-orange fabric, slight rib on interior

- 1 coarseware body fragment, weak black glaze exterior? reddish interior, very gritty chocolate brown fabric.

- 1 coarseware body fragment, coarse red fabric, weak black glaze interior/exterior

- 1 coarse ware body fragment, coarse red fabric, weak black glaze exterior

- 3 semi-coarse ware body fragments, 2 buff & 1 pale ochre fabric, weak brown glaze exterior

- 2 semi-coarse ware rim frag, simple bowl, weak brown glaze exterior, weak red exterior, buff fabric & 2 interior

92

1/2 cup of coarseware rim fragments

+ coarse ware body fragments (large lot)

- 1 semi coarse ware body frag, weak red int.  
- 1 semi coarse ware body frag, buff fabric, weak brown glaze ext, weak red int.

Jebel Khalid.  
Sandage Epsilon.

Weather: slightly hazy, sunny.

Workers: Adamina, Banaa Banaa, Mtheneh.

6:30am. Continue clearing stratum 3 (similar to topsoil - greyish brown, loose soil with the odd stone)

7:00am. Quite a lot of pottery & bone coming up. Still in stratum three, do not appear to have reached any floor level. Few fragments red glaze.

8:30am. Metal object, probably bronze pin found locus 2, stratum 3.

9:00am. Reach bedrock (trench therefore very shallow here) in south west corner. Also slightly square block which may be part of a wall.

9:10am. Is a short section of wall extending from the south west corner along southern side of trench & also appears to go up the western side, as noted above. It seems to be resting on bedrock.

9:20am. Clearing more topsoil of stratum 3 in eastern half of locus - few largest stones here. Traces of slightly redder soil around them?

210587

Stratage Epitola [2] [3] Bag 1.

- : 3 coarse ware handle fragments, pale orangey fabric.
- : 2 coarse ware rim fragments; at least one from a simple bowl.
- : 6 coarseware base fragments.
- : 1 body fragment coarseware with horizontal parallel incision.
- : 1 coarse ware very broken base (?) fragment.
- : 2 semi-coarseware body fragments, weak red glaze, pale orange fabric.
- : 4 semi-coarseware rim fragments, weak red glaze, pale orange fabric.
- : 1 rim fragment, partially painted, simple bowl, buff fabric.
- : 6 body fragments, red glaze, pale orange fabric.
- : 2 rim fragments, red glaze, pale orange fabric.
- : 1 fine red glaze body fragment, 3 parallel horizontal incisions.

+ coarse ware body fragments; some with dusty, pale pinky-orange tinge on exterior. Includes 2 river stones

Stratage Epitola [2] [4]

+ small lot coarse ware body fragments

- : 3 coarse ware handle fragments.
- : 1 coarse ware base fragment.
- : 3 coarseware rim fragments
- : 1 rim fragment, simple bowl, partially painted
- : 1 body fragment, semi-coarse ware
- : 1 semi-coarse ware body fragment, weak brown parallel exterior and interior.
- : 1 semi-coarse ware body frag weak black exterior? weak brown interior?

Jebel Khalid.  
Stratage Epitola

9.30am Fragment of a lamp.

11.20am - Still clearing/cleaning locus 2 to bedrock, will take photographs before beginning to clear up the trench from the south end.

11.30am - Eastern half of locus two, stratigraphy starts to change; appears to be a reddish layer, perhaps with some small pieces of limestone in it below (3) = (4)

12.30. Stratum 4 removed. Only about 5cm thick. A few pieces of coarseware, a few bone fragments. Now start removing layer below it (in bedrock?) = stratum 5. Stratum five greyish brown soil, fairly loose, with some smallest stones in it.

Pottery: [2] [3] ✓ (2 bags)

[2] [4] ✓

Bone: [2] [3]

[2] [4]

230587. Nondage Epitaph. [2] (1)

- 18 coarseware body fragments.
- 1 coarse ware base fragment, pale pink brown fabric.
- 1 semi-coarse ware body fragment, weak red glaze interior & exterior, pale orange fabric.

Jebel Khalid.  
Nondage Epitaph.

Weather: clear, sunny, cool breeze.  
Workers: Mheresh, Branea, Hassan Hassan, Adjamuna.

6:30am. Continue clearing stratum five in eastern half locus 2; this was just started 210587. Bedrock below it.

7:00am. A few stones appearing, firmly embedded, along southern side of trench - are they a continuation of the wall on the southern side, which has a "gap" in it?

Also balks show stratigraphy not evident when digging; stratum 3 in the locus 2 now shows 3 layers:

- (i) soil, greyish brown, similar to topsoil
- (ii) thin, intermittent layer of small stones <sup>? or is this only in NW-E corner?</sup>
- (iii) grey layer soil, above more reddish one ← stratum (21)

8:00am. Clearing stratum 5 to bedrock. Between rocks on south side, in the "gap", there appears to be some reddish soil (= stratum 6)

9:30am. Excavated down to bedrock locus 2. Now clearing stones of wall - some pieces coarseware, bone found in soil around stones (= stratum 1.2)

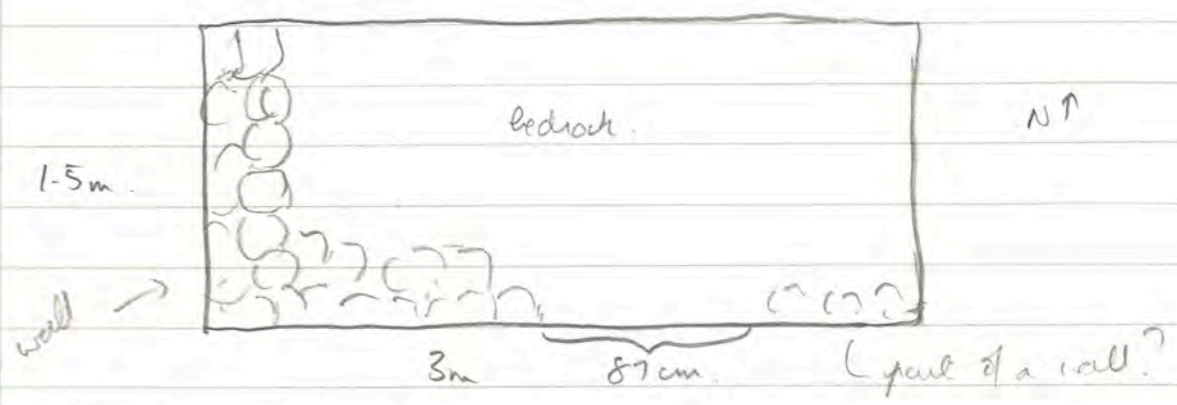
230587.

Strudage Epitax [2] (5)

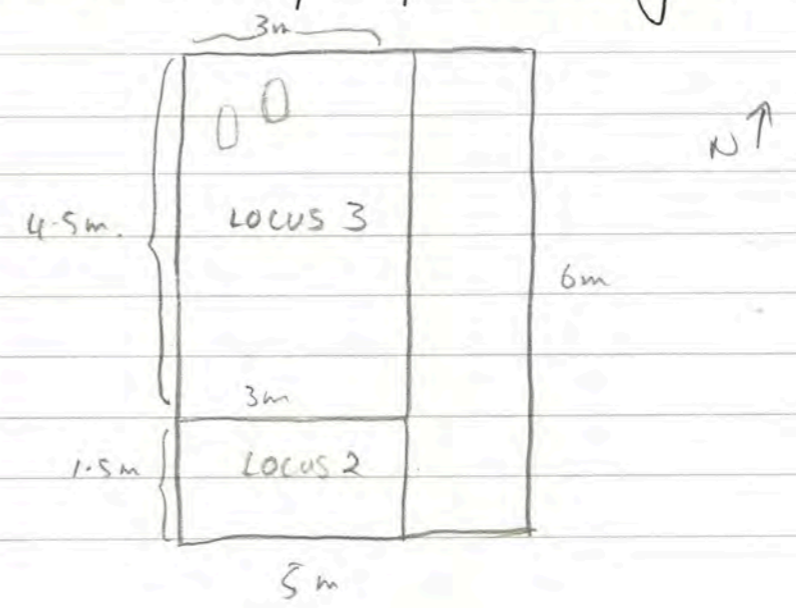
- 2 handle fragments; one coarse ware, other semi coarse, small, slightly tumbled, with thin brown glaze.
- 7 coarse ware rim fragments; one with dull, weak brown black glaze.
- 4 coarse ware base fragments; one as it is from a very small base.
- 3 semi-coarse ware body fragments; buff fabric. 2 with weak red glaze interior & exterior, one with weak orangey glaze on <sup>ex</sup>terior and weak brownish glaze on interior.
- 3 fine red glaze body fragments, very small. Pale, slightly <sup>pink</sup> orange fabric.
- 1 semi-coarse ware ~~rim~~ <sup>base</sup> fragment. Pale brown-orange fabric, very weak red glaze.
- 2 semi coarse ware rim fragments - from same vessel? Weak red glaze on interior, buff fabric.
- 1 base fragment, fine red glaze, pale pink-orange fabric, with foot.
- 1 base fragment, semi coarse ware, weak red glaze interior & exterior (?), pale orange fabric.
- 1 coarse ware body fragment, pale brown-orange fabric thin black-brown glaze on exterior.
- 1 coarse ware body fragment, pale orange fabric, 2 parallel horizontal incisions.
- 1 semi-coarse ware shoulder, from small bottle? buff fabric.
- 1 coarse-ware ~~shoulder~~ shoulder? Very fragmentary.
- + coarseware body ~~shards~~ fragments.

Jebel Khalid.  
Strudage Epitax.

10-15 am. Rd 10 frame 34 - Photograph locus 2, looking south.



11-00 am. Locus 3 designated; intend to work up the slope towards the north and the 2 upright stones near north-west corner (which may be a doorway), following the wall along the <sup>west</sup> south bank in the hopes of encountering a cross wall.



230557.

Sandage Epselen [2] (6)

- 5<sup>+</sup> rim fragments, coarse ware; 2, <sup>quite</sup> large, one with double rim (see picture) + one very broken.



- 33 semi coarse-ware body fragments, weak red glaze.
- small lot coarse ware body fragments.

230557

Sandage Epselen [3] (2)

- 2 base fragments which fit together; coarse ware, dark grey fabric.
- 1 "nipple", base of amphora? coarse ware fragment
- 1 roof like fragment
- 4 rim fragments; one quite curved, from narrow neck? of very coarse darkish red-brown fabric. Also one fairly ornate rim:



+ small lot coarse ware fragments (body) including some with dusty pale orange-pink interior

230557.

Jebel Khalid.

Sandage Epselen.

11-15 am.

Start removing stones (stratum 2) from locus 3. → continue until work stops about 12:50 pm. (nearly finished removing stones - some coarseware + a few bone fragments found among them)

Pottery: Sandage ∈ [2] (6) ✓  
 Sandage ∈ [2] (1) ✓  
 Sandage ∈ [2] (5) ✓  
 Sandage ∈ [3] (2) ✓

Bone: Sandage ∈ [2] (5)  
 Sandage ∈ [2] (1)  
 Sandage ∈ [3] (2)

Jebel Kharid.  
Sondage Kpsulin.

Weather: cool, cloudy.

Workers: Kheresh, Bnanea, Adjamina, Hassan Hassan.

3

6:30 am.

3

Start clearing stratum <sup>3</sup> & locus 3. Stratum <sup>3</sup> grey. Brown soil, loose, with occasional stone. Intend to follow wall on ~~south~~ west side up the slope, hopefully encountering a cross wall around the "door posts". Trying to follow stratigraphy noticed in north & east balks of locus 2 in stratum 3, which is followed by a thin, pebbly layer (at least in the north east corner of locus 2; it does not, at this point, seem to extend beyond this area) Next, a layer of grey, quite fine soil, followed by a thin reddish one (again, in north-east corner of locus 3 at least - not sure if extends past this area.). Below this is another ~~A~~ grey-brown layer, on bedrock. These layers are most obvious in north and east balks in the eastern half of locus 2; they are not evident in the western half, where the level of the bedrock rises slightly; here only stratum 3 exists.

So far there is no evidence of any very hard layer which might have been a floor; as the bedrock is very near the surface, could it have been the floor?

7:30 am.

Bedrock (?) reached below stratum 3 in locus 3 just into locus 3.

240557. Sandage Epula [3] (3)

fragments  
body  
ware  
course  
lot  
large

- 1 coarse ware body fragment, shoulder? 2 parallel horizontal incised lines, pink orange fabric.
- 3 fragments roof tile.
- 5 coarse ware handle fragments.
- 1 coarse ware handle fragment, dense red, buff fabric.
- 1 small semi-coarse ware handle fragment, pink orange fabric.
- 1 semi-coarse ware twisted handle fragment, weak black-brown glaze.
- 7 coarse ware base fragments.
- 1 semi-coarse ware fragment, pale dusty orange interior
- 12 coarse ware rim fragments
- 1 fine black glaze body fragment, pale pink-orange fabric.
- 2 fine red glaze body fragments, pale pink-orange fabric
- 3 fine red glaze rim fragment, pale ochre fabric
- 1 semi coarse ware base fragment, pale orange, weak red glaze
- 5 semi coarse ware rim fragments, simple bands, partially painted.
- 5 semi coarse ware body frags, weak red glaze, <sup>two-</sup> <sup>one interior</sup> only; pink-orange fabric
- 1 semi-coarse ware rim fragment, pale orange fabric, weak brown glaze
- 1 coarse ware rim frag, partially painted?
- 1 coarse ware rim frag, chocolate brown fabric.
- 1 semi-coarse ware rim frag, weak red glaze interior & some weak black? Pale orange fabric
- 1 coarse ware rim frag, weak brown + red glaze rim & red in interior?
- 1 semi coarse ware base frag? buff fabric, weak black glaze
- 1 semi coarse ware frag, thin neck small bottle? buff fabric, weak black glaze.
- 1 semi coarse ware rim frag, ~~cream~~ cream fabric, white slip.

Jebel Khakhd.  
Sandage Epula.

10-30am

Still clearing stratum 3 from bedrock, moving north up the bench. The bedrock slopes slightly, and is roughly stepped, but this is probably natural rather than deliberate. The wall continues along the wall side, with a small break in it; it is not certain whether this is an opening or not - the bedrock is exposed & quite high in the gap, & the stones could have fallen slipped out of place here. Stratum 3 has quite a few large stones; these however are resting on south, & are in no apparent order, and so are removed as tumble.

Object? part of a figure? low shaped fragment, possibly of limestone rather than pottery.

12-30

Have progressed as far as "door post" nearest western side; the wall extends as far as this along the western bank, and is joined by a block to the "door post". The bedrock continues to slope gently uphill.

Pottery: Sandage E [3] (3) ✓  
incl. few fragments of roof tiles

One: Sandage E [3] (3)

- 1 semi coarse ware body frag, 5 horizontal, parallel incised lines

exterior, also red in interior?



Jbel Khalid  
Sandage Lpulin

Weather: slightly hazy, sunny.  
Workers: Hussein (child), Adjamina, Branea, Mtherch

6:30 am. Continue clearing stratum three from locus 3, moving north up the slope. Also start removing layer of grey soil (stratum 4 locus 3) from near south edge of locus three. This was the layer of grey soil noticed in bank of locus 2 & originally taken as stratum 2. The thin pebbly layer & the reddish one noticed in the north-east corner of locus 2 do not appear to extend into locus 3. The layer of grey soil in locus 3 (stratum 4) disappears a short distance into it, when the bedrock "steps" up.

8:30 am. Number of large stones in stratum three locus 3. These appeared to be tumble, but are left in situ & will be cleaned to make sure they are not part of a wall before they are even removed.

8:45 am. Very thin, small fragment of glass? found stratum three locus 3.

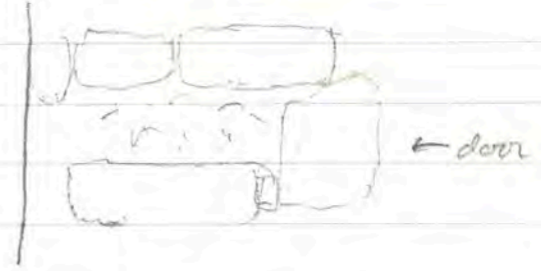
9:00 am. Another piece of glass, thicker, deep blue. body fragment.

250587. Sandage Epitaf ③④.

- 1 coarse ware base fragment, buff fabric.
- 1 battered coarse ware handle fragment, orange fabric.
- 1 fragment small semi-course ware handle, weak black glaze.
- 1 coarse ware body fragment, dusky black exterior, gilly orange fabric.
- 1 semi-courseware body fragment, small, partially painted.
- 1 very battered coarse ware rim, ochre fabric.
- 1 semi quite fine ear rim fragment, simple bowl, ochre fabric, weak red glaze interior.
- 1 semi-course ware rim fragment, grey-brown fabric.
- 1 semi-course ware body fragment, pale orange fabric, weak brown glaze/paint exterior, traces weak red glaze interior?
- + small lot coarse ware body sherds.

Jebel Khalid Sandage Epitaf.

10-45cm Area in the north-west corner cleared to bedrock; small wall giving western-most "door post" appears to be made of cut blocks with fill in between them:



Next to the eastern most "door post", on the western side are two flatish blocks - remains of a threshold? Also there is a round socket in the middle of the door post, - for a door or bolt? Or is it just natural?

Between the 2 "door posts", nearest the westernmost one, is a worn block, about 55.5cm x 25.5cm. Its thickness is about 5.5cm. One end face has a round socket cut at one end, with a diameter of about 10.5cm, and a depth of about 5cm.



250587. Sandage Epulian, [3] (3)

- 1 rwei stone.

\* - 1 edge fragment <sup>semi coarse ware</sup> roof tile.  
- 1 body fragment, shoulder of vessel, 3 parallel incised horizontal lines, 2 close together just above shoulder, one further down on shoulder. Pale brown-orange fabric.

- 1 fine body sherd, weak red glaze, pale orange-brown fabric.


- 4 semi-coarse ware base fragments, 2 very small, 3 pale brown-orange fabric, one with weak red glaze; also one brown-pink fabric.

- 1 semi coarse ware rim fragment, simple bowl, weak red glaze interior & exterior, pale brown-orange fabric.


- 1 semi coarse ware rim fragment, simple bowl, weak black-brown glaze exterior, weak red-brown glaze interior, pale pink-brown fabric.

- 1 ~~fine~~ semi-coarse ware rim fragment, simple bowl, 4 parallel horizontal incised lines on exterior, pale orange brown fabric, weak red glaze interior & exterior?

- 4 semi-coarse ware rim fragments, one very small. One with incised line across top of rim, one with

"double" rim:  1/2 pink-brown fabric, loche, 1 buff.

- 1 semi coarse ware small base frag, pale orange brown fabric.

- 1 semi coarse ware rim fragment, weak red glaze interior, also 2 ribs interior: 

- 1 coarse ware rim fragment, weak black glaze interior & exterior, brown fabric.

+ coarseware body sherds

Jebel Khalid  
Sandage Epulian

12:30pm All soil cleared away from tumble - photographs before tumble removed.

Roll 11 Frame 16 : western half, looking north

" 17 : eastern half, looking north.

" 18 : westernmost "door post", wall with full joining wall on west side and "doorpost" - also block with socket in situ

Frame 19 : "threshold" blocks and eastern most "door post" :

Frame 20 : Western half, looking south

" 21 : eastern half, looking south

Pottery: Sandage ∈ [3] (4) ✓ Bone Sandage ∈ [3] (4)  
Sandage ∈ [3] (3) ✓ Sandage ∈ [3] (3)

Also 2 pieces glass.

Jebel Khalid.  
Sunday Epriku.

Weather: sunny.

Workers: Mtherah, Ireen, Adjamuna, Branea, Hassan Hassan.

6-45 am. Start taking out stones stratum 3; hopefully find a crosswall.

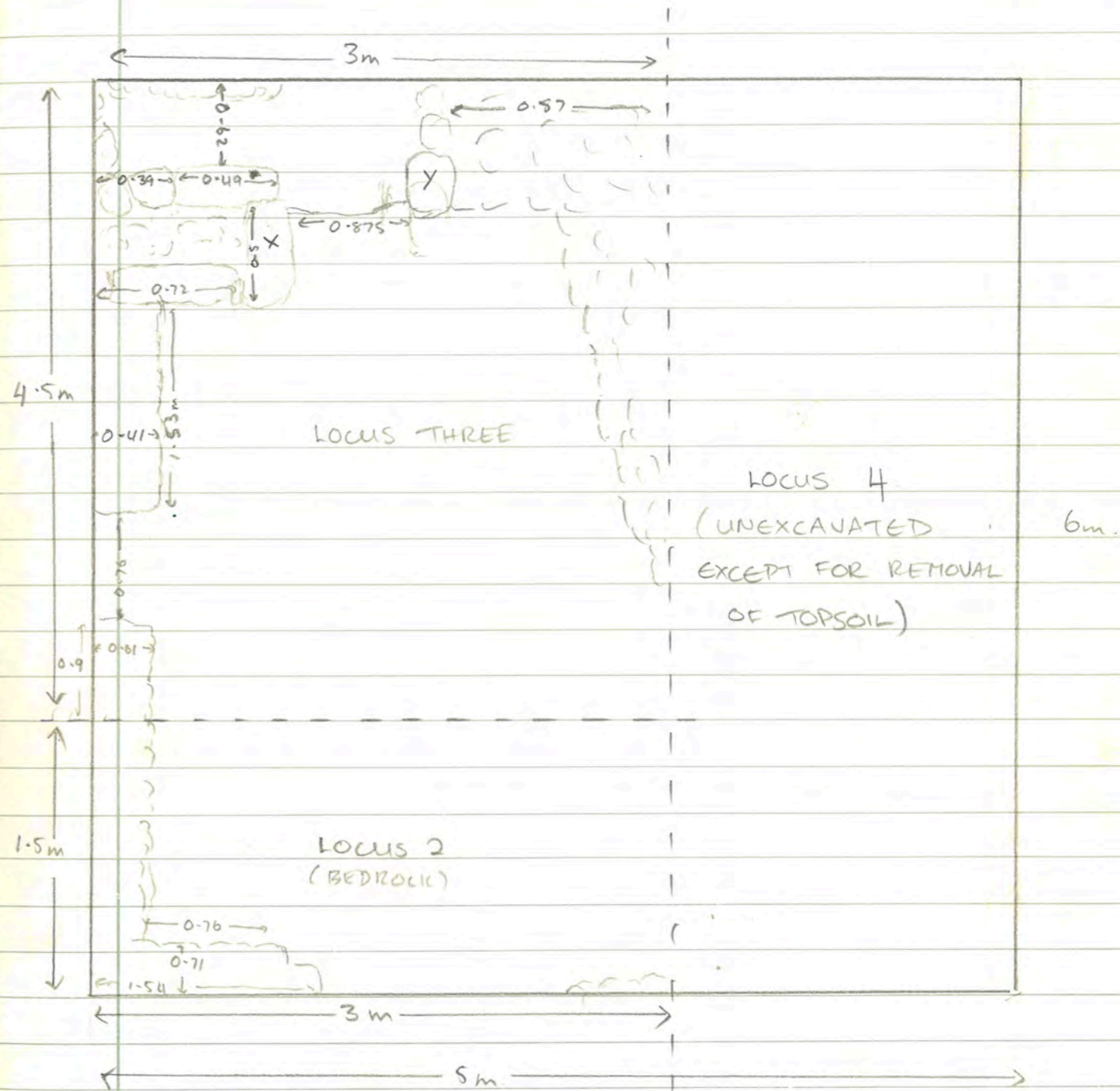
7-30 am. Possible wall? Have not come to its intersection, if it exists, with the "doorpost", but seems to be a wall running along eastern side of locus 3; it is not parallel with the balk, but crosses it about halfway down the trench.

9-00 am. #. Have found the point at which the wall on the eastern side of the trench joins the eastern-most "door post". There is also a "step" up, roughly cut into the bedrock between the "door posts" - this seems to be the threshold. The two "threshold blocks" noticed yesterday seem out of place and will be removed after being photographed.

It is uncertain what function the building had; this might be more evident if the whole trench had been excavated. The bedrock appears to have been the floor, and as it slopes up gently this room is unlikely to have been an important one - possibly some sort of lean-to or store house? I do not think it was a stall, as there

JEBEL KHALID : SONDAGE E.

LOCUS 1 = WHOLE TRENCH



HEIGHT DOOR POST X = 0.95 FROM BEDROCK. (SMALL STONE UNDER-NEATH - ACTUAL HEIGHT = 0.9  
DIMENSIONS AT BASE: 0.59 X 0.24

Y (ALSO BUILT UP ON THRESHOLD) = 1.05 m \* HEIGHT = 0.26  
DIMENSIONS AT BASE: 0.32 X 0.28 WIDTH = 0.25

Jebel Khalid  
Sondage Eprilen

seems to have been a wall crossing the trench along the south bank. A small courtyard is a possibility; but there is a depression south-west of the trench (in fact the trench touches the corner of it) which looks as though it could have been a central courtyard.

10.50am. Photograph "threshold" before removal of 2 "threshold" blocks

Roll 11 frame .

2 threshold blocks removed. Door socket? roundish stone with circular socket in it, loose.

Cleaning of threshold; large, very heavy bone found near eastern "door post" - seems rather square, has it been shaped? - photograph of bone in situ. <sup>donkey bone?</sup>

Final cleaning of trench.  
Photographs, roll 11.

Pottery Sondage E. [3] ③ ← not sorted because unwashed.

Objects. Sendage Epsilon.

180587 small metal strip [1] (1)

210587. small bronze pin [2] (3)

210587. fragment of lamp [2] (3)

240587. fragment of figurine? [3] (3)

250587. glass? Very thin, small fragment [3] (3)

260587. Roughly circular stone, rough around socket in it, found in "threshold". Part of door socket?

260587 large, very ~~heavy~~ heavy bone found in threshold. Shaped? [3] (3)

Locus 1. (whole trench)

Stratum one: topsoil.

Stratum two: loose stones after topsoil cleared.

Locus 2 (south-west corner)

stratum one: topsoil. (= locus 1 stratum 1)

3 layers? { stratum 2: loose stones, cleared after topsoil removed.

stratum 3: loose, greyish-brown with occasional stone. Of same type as topsoil.

stratum 4: Only in eastern half of locus 2. Is slightly more reddish than stratum 3.

stratum 5: Also only in eastern half of locus 2. Grey-brown soil, fairly loose, with some smallish stones in it.

Locus 3.

stratum one - topsoil

stratum 2 - stones

stratum 3 - grey brown loose soil, some stones, of similar nature to topsoil. Also some larger cross stones; these appeared to be tumble from walls, as they were resting on earth.

stratum 4 - grey, loose soil, a few small stones in it. Only along southern edge of locus 3, before a "step" in the bedrock.



23.5.87 p.2

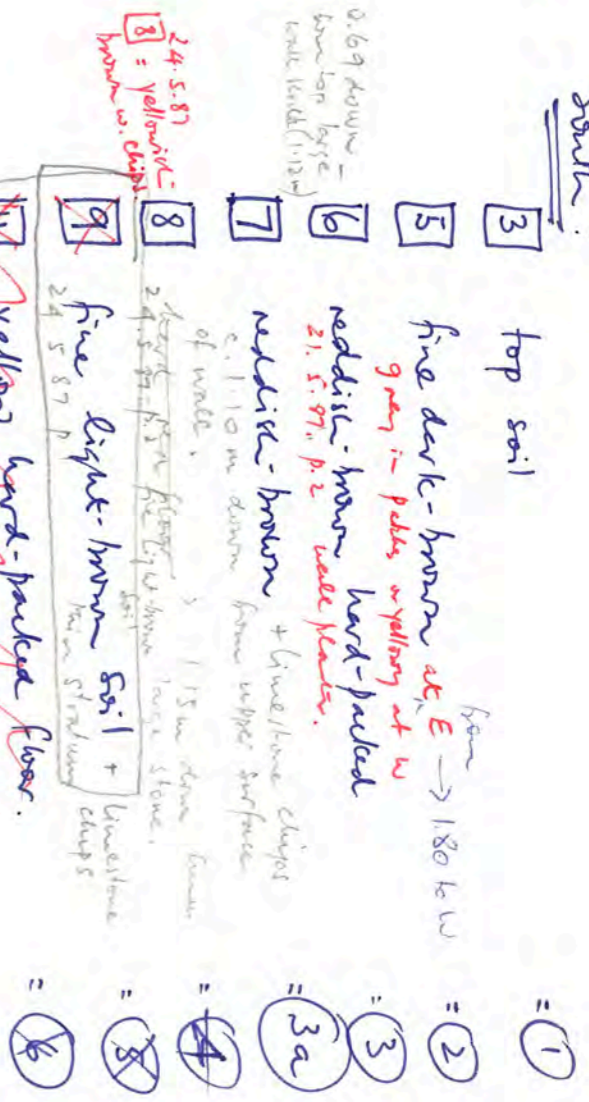
Site to [9] 25.5.87 p.2

center of level. close to E wall at 5. some sort of floor  
yellowish-brown; loose brownish water surface. Mouldstone  
by hand + just to 5 y distance E in stone, a light  
brown. Mouldstone deposit. Ling. Mouldstone for top floor!

17.5.87. p.1.

NW corner ↓ [2] soil hard slight yellowish tinge.  
centre ↓ [7] dark brown, faint lumpy patches

South:



24.5.87. p.2.

North: Floor 1.04m down from top surface of corner block  
white patches to N of corner block  
centre made: Spoon + spoon + piece of  
topsoil.  
topsoil: = 1  
= 2  
= 3  
= 4  
= 5  
= 6

24.5.87  
In [2] - at NW corner soil is hard; slight yellowish tinge  
- in centre, soil is dark brown, fine, lumpy patches  
at E of S corner same to B  
[11] is below [7] at E of S corner same to B

Lundale E

Locus 2 (SW corner)

- ① top soil.
- ② tumbled. loose surface stones.
- ③ similar to topsoil. grayish-brown loose soil odd small stone.
- ④ NE corner. reddish layer (+ small pieces of limestone) only c. 5cms thick not in Locus 3 only in E. part Locus 2.
- ⑤ fine grayish-brown soil, fairly loose, with some smallish stones in it. Only E. part of Locus 2. in Locus 3 gray soil disappears when bedrock 'steps' up.

Locus 3 glass. tiny fragment. deep blue.

25.05.87 p.1

layer of gray soil in Locus 3 (stratum 4) disappears a short distance into it, when the 'bedrock' steps up.

Locus 3

- ① topsoil
- ② stones
- ③ gray-brown loose soil. - like topsoil.
- ④ gray loose soil a few small stones. Only along western edge of Locus 3 before a step in bedrock.

Jebel Khalid  
Sandage Epsilon cont'd.

was excavated, from the western half first, starting at the southern end of locus three and moving up the slope towards the doorposts. As in locus two, the soil removed was of the same quality as the topsoil. The wall along the west bank of locus two was found to continue into locus three, still only one course high and resting on the bedrock. There was a small gap in it, about mid-way along the southern bank of the trench; this may have been a doorway, but it seems unlikely in view of the two large doorposts so near it. It is more likely that some of the stones of the wall <sup>have</sup> slipped away, especially as the bedrock rises slightly at this point. Soil was removed up to the doorposts, but not beyond them, but it was evident that there was a small wall, apparently composed of small worked blocks with fill in between, connecting the main wall and the westernmost doorpost. As in locus two, the bedrock was not far below the topsoil and sloped slightly.

The eastern half of locus three was cleared next, also up to the doorposts. Again, the bedrock was reached very quickly and the soil was of the same quality as the top soil. A short wall was connected to the easternmost door post, and this joined another wall which ran down the eastern side of locus three until it entered the bank at about the mid-point. It was not parallel to the western wall. Both of these walls were composed of one course of field stones resting on bedrock. The bedrock in loci two and three sloped upwards, implying that this room was not a major room in the house, but was possibly some sort of lean-to or storeroom.

Lastly, the threshold between the doorposts was excavated, and the small area between the posts and the northern bank of the trench. The threshold was a step roughly cut in the bedrock. Lying between the two doorposts was a worn, but obviously worked rectangular block with a round socket near one end. It had obviously slipped from its original position, but was possibly some sort of door socket

Jebel Khalid  
Sandage Epsilon.

Sandage epsilon, measuring 6m x 5m was laid in the residential district of Jebel Khalid. The trench was positioned so as to include two stone doorposts, which, while very worn, were exposed well above the level of the topsoil, and also what appeared to be a partially exposed wall. The site seemed to be at one corner of a "courtyard" of a house - that is, a slight depression in the ground which had fewer stones on its surface than the surrounding area.

A worked block, sitting on the surface near the south-east corner, obviously not in situ, was taken out. Then the topsoil, of a greyish-brown color, was removed from the whole of the trench, exposing a mass of tumble. These stones, which included at least one worked block in the eastern half of the trench, were cleaned and photographed.

A small section measuring 3m x 1.5m was then marked out in the south-west corner of the trench (locus two). The loose stones and the soil were removed. The soil was basically of the same quality as the top soil except in the eastern end of locus two, where there appeared to be several layers, including a reddish one. It is difficult to say what the significance of this is. The bedrock was exposed very soon; it was not far below the topsoil, and, as no other possible floor levels were encountered, must have been the floor. Along the western edge <sup>and part of the southern</sup> was a section of a wall, one course of field stones resting in the bedrock; this was the wall which was noticed when the trench was laid out. Along the east end of the south bank were some smaller stones. There were also possibly part of a wall, as they were resting on the bedrock, but they did not connect with the other wall.

The digging was then extended up the slope in a northerly direction. An area of 3m x 4.5m was marked out (locus three) extending up to the north bank of the trench, and this included the two doorposts. All the loose stones were removed from the surface, and the remaining soil

Jebel Khalid.  
Sondage Epailen cont'd.

Beyond the doorway there were no signs of any walls. Just outside the threshold however, in line with the eastern doorway, a ~~very~~ large, very heavy bone was found. It was rather square, and may have been shaped, but its function, if it had any, is not known.

The remaining section of the trench was not excavated due to lack of time; it may not, however, be worth excavating, seeing as the parts of the trench which were excavated did not produce any significant finds or structures. The pottery was mainly coarse ware, although there was some semi-coarse ware (often with weak glaze) and a few pieces of fine red glaze ware. Quite a number of bone fragments were found, as well as two glass body fragments.