

PJC
1987

NORTH WEST TOWER

- Excavations
- Structures

JK NW tower

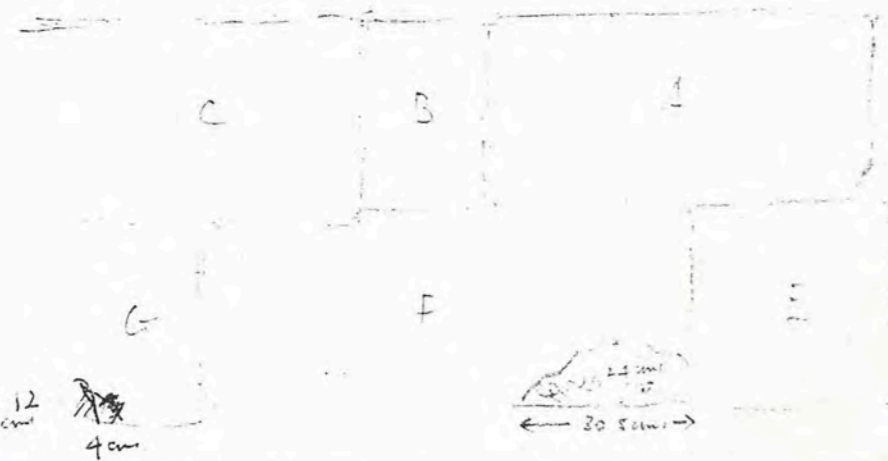
3.5.87

Trench 1 N.

With two workmen, we began to uncover again the plaster surface or floor. We do this as carefully as possible.

5.30 am. The plaster floor appears to continue inside the entrance way - but that way uncovered as far W as two large blocks of rubble

Trench 1 E



See sketch
2.5.87

The present measurable height of the plaster patch is 24 cms. but there is a narrow gap between between bedrock and wall, where the foundation trench was dug.

The bedrock in this corner has strange shapes on its surface but it is worn and smoothed - if walked on regularly in antiquity.

The surface of the plaster patch is roughened, similar to the rough surface of the block.

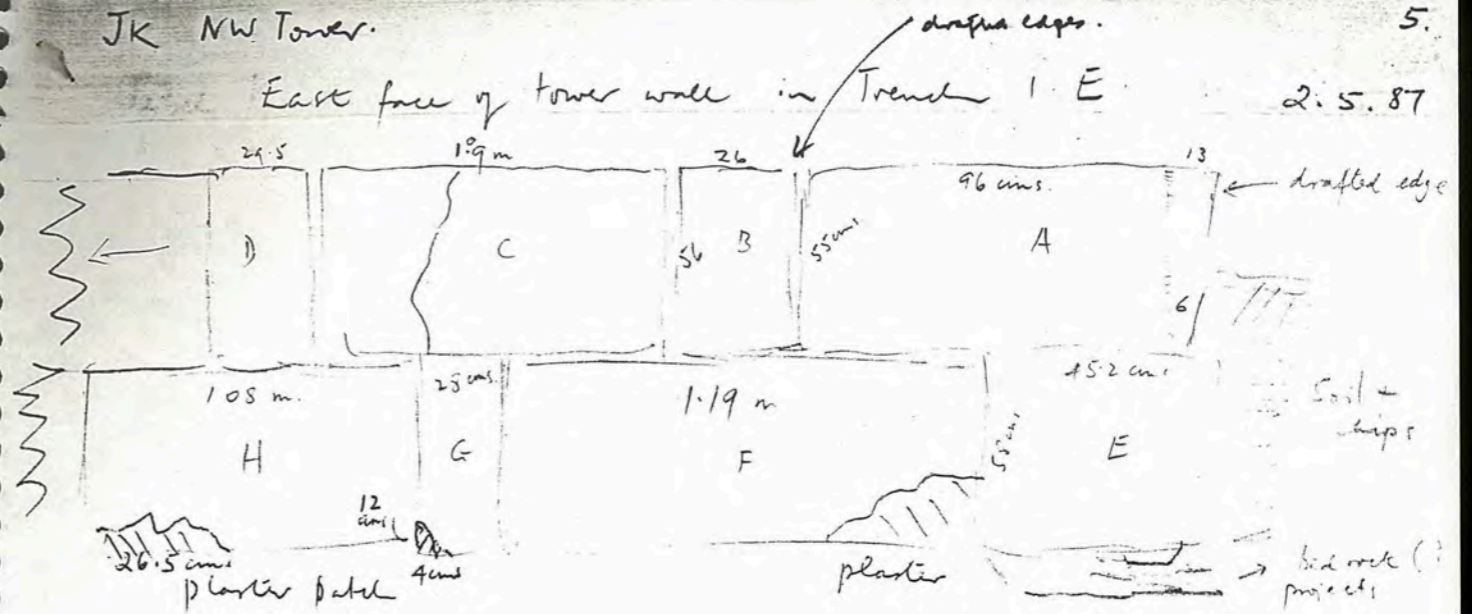
9.25 two B+W photos of plaster patch from E (in shade)
one colour photo 2.11.87

JK NW Tower.

5.

East face of tower wall in Trench 1 E

2.5.87

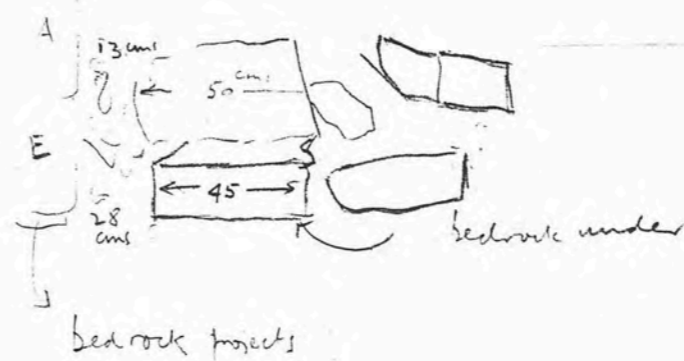


* the front edges of block B are drafted at sides and at bottom.

Block C has a crack on its face

Block E has diagonal cuttings from chisel

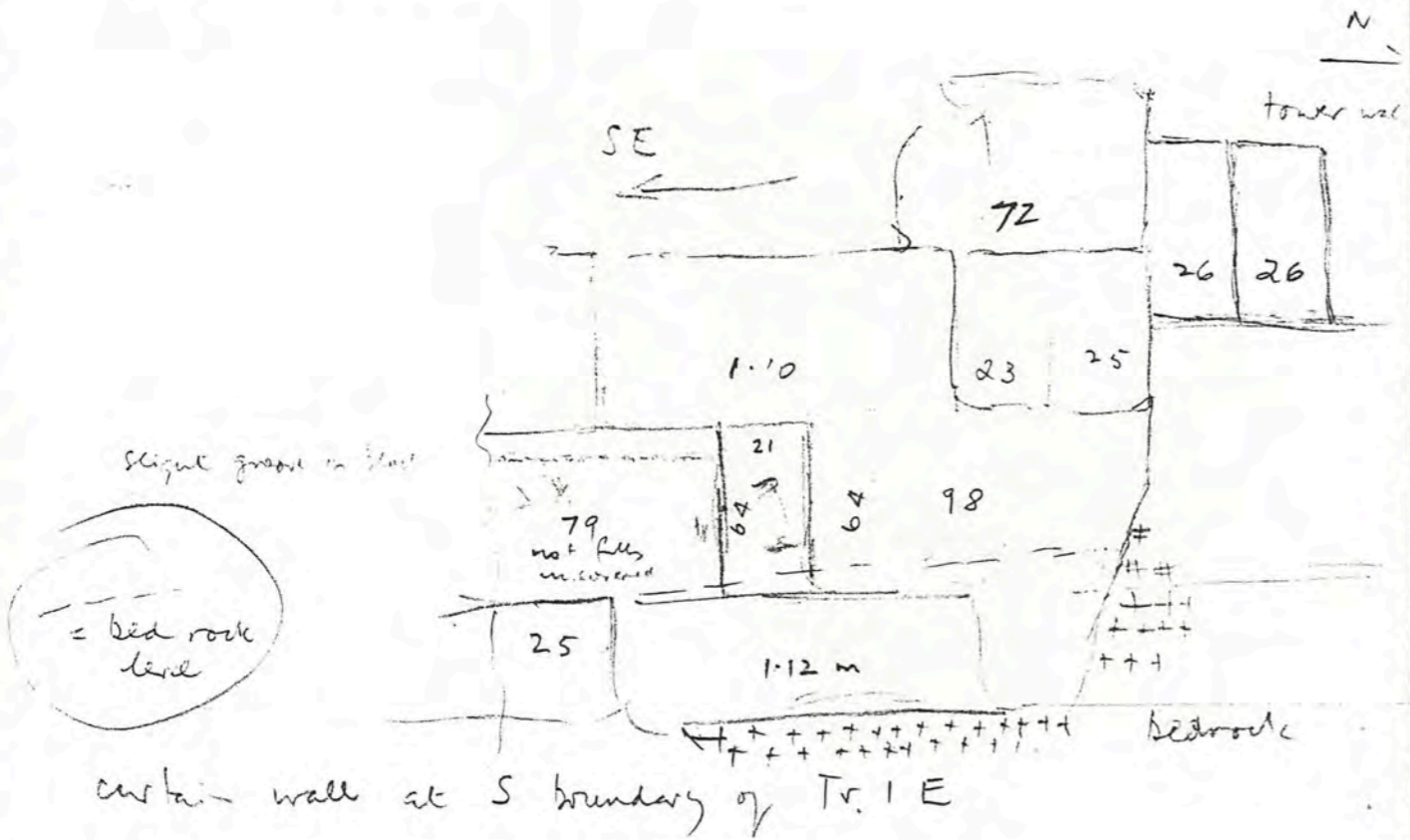
Block F has a very rough face



bedrock projects
(or stones packed under?)

Trench 1 E.

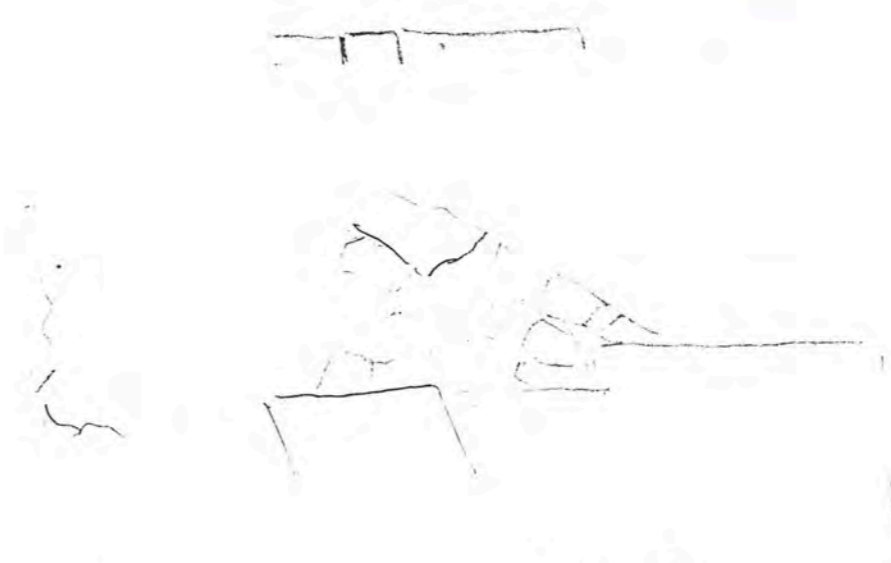
10.45 am. The foundation trench against the circuit wall has been cleaned and brushed down to bedrock. The depth of the vertical cut from top of bedrock is 69 cms. The depth from the lower preserved block in the centre of the curtain wall section is 1.75 m.



11 am. began cleaning remaining soil and limestone chips immediately above bedrock in centre part of trench near block H (see 2.5.87) and working S toward foundation trench.

Trench 1 E (3)

9.30 am. Within stratum 3 (whitish with limestone chips) a series of rough stones begins to appear. They form perhaps the corner of a square. There are larger blocks on the outside with smaller stones in the middle.



These blocks are cleared a little for the moment and work proceeds.

10.40 am. Tr 1 E (3) a small bronze pin or needle slightly bent in stratum (3); 30-40 cms N of the corner of blocks sketched above. 87.002

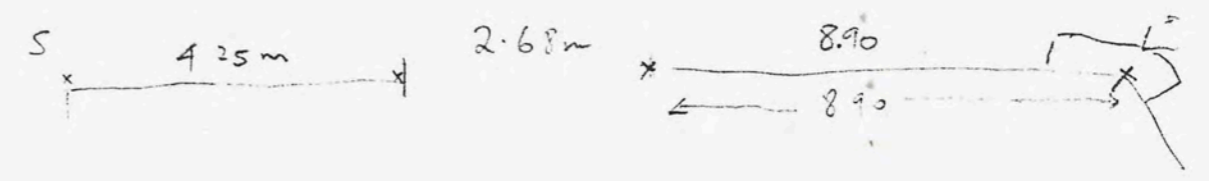
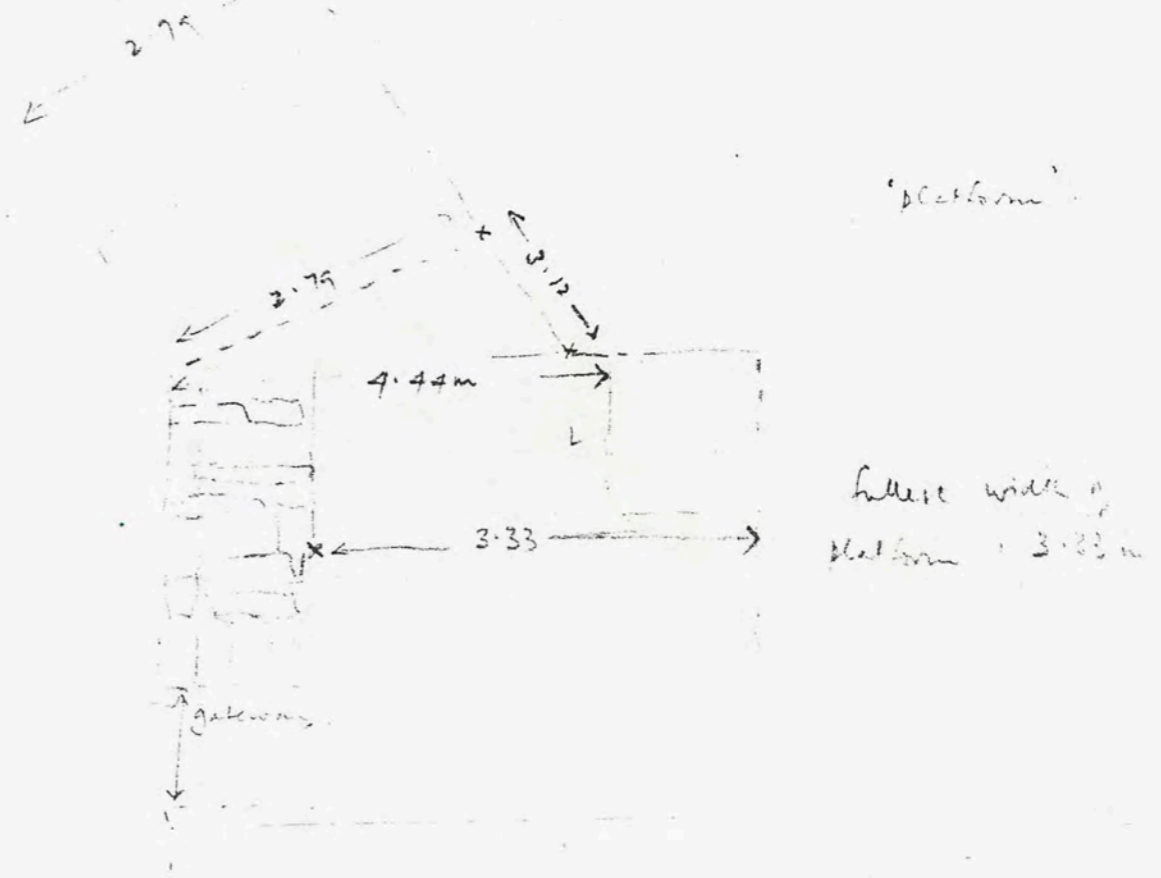
No wind. Sun blazing but I take a small sample of white powdery deposit of (3). might be possible to determine whether this is limestone stone or gypsum or plaster. Or maybe some kind of evidence for mortar between blocks.

12.5.87

JJK NW

North West Tower

3 workpersons are cleaning the rock cuttings at the W of the tower, preparing to final photography.



East Face of NW Tower
Note the gateway is not in the center

tumble in (4) (= hard-packed soil)

6.5.87. p.3.

mainly on S half of locus
some frags coarse ware pottery

opp. p.4. Potts
(small lot)

in SE corner soil is fine, light brown + loose.

⊕ 6.5.87 p. 4. 10.40 am.

level with bottom of blocks that form the platform.
diagram 6.5.87 p.4.

tumble = (3)

9.5.87 p.1. for Potts in (3)
rim has brown, dark part outside.
stripe of brown at rim on inside.
tumble appears at slightly lower depth
Potts in (3) 9.5.87 opp. p.3.

at N of [2]

thats at S.

NE corner of (4) some small pieces of bone.
66 cms down from top of platform.

Potts 7.5.87 opp. p.2.

at N

79 cms from top of platform to bedrock

foundation trench: deposit is loose

limestone chips + limestone powder + soil
fills a light yellowy color.

6-8 cms wide.

(6) = (4) 9.5.87 p.1
beneath tumble = red-brown close packed soil.

beneath tumble several coarse ware frags

Potts from 6 9.5.87 opp. p.1. + p.3. thin + elegant
rim fragments.

small pieces of bone from (6) + (5)
9.5.87 p.1.

T. 1 W loc 2.

see diagram 3.5.87 p.5

(1) top soil (3cm).

(2) tumble 21 cms

at S end not so much tumble
soil quite pale + dusty.

(3) white powdery deposit mixed with coarse chips
upper surface only a little below level of platform

N.B. 5.5.87

opp. p.2

(3) has typical of blocks.
Potts in it.
∴ dated in Hellenistic period

87.004 half coin

(3) 3.5.87 p.6.

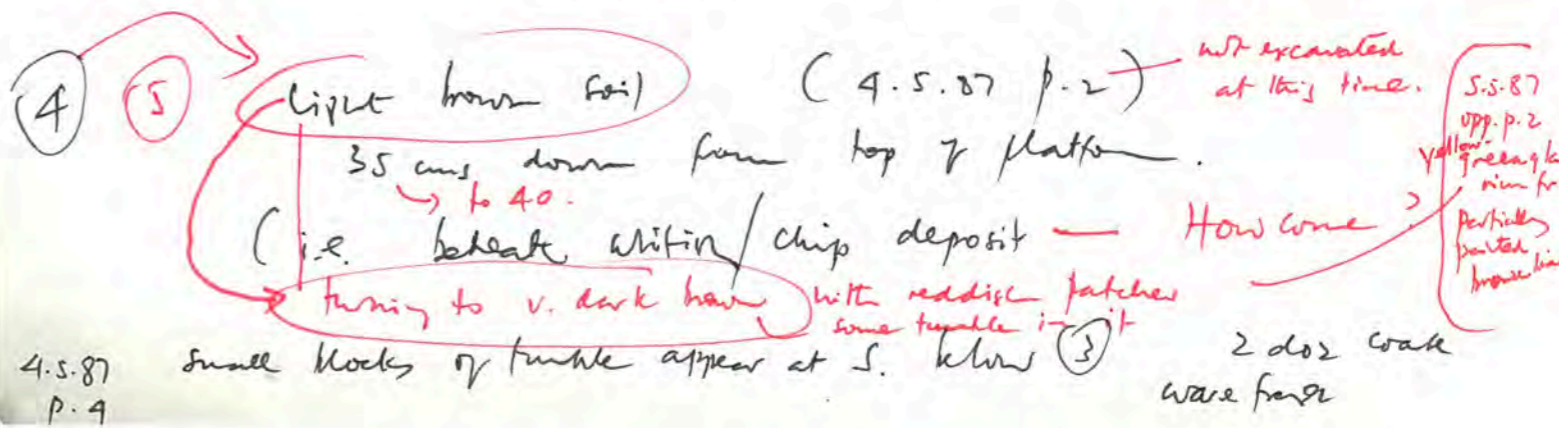
generally (3) = 8cms sep.
at S boundary light brown fine soil at c. 18cms
slightly damp

very white + powdery. only 4 frags of coarse Potts
3.5.87 p.4.

? (4) ? fine brown soil - 28 cms wide from wall
at SW corner.

3.5.87 p.5

white-powdery deposit does not reach as far as
the wall.



4.5.87 p.4

9.5.07 p.3.

N wall of Tr 1 W [2]

Stratigraphy shows beneath rubble.

- fine powdered concrete.
- light colored soil mixed with limestone chips
- then alternating red, black, red in thin layers.

bedrock higher in gateway than in

Tr 1 W [2]

where it seems to have been cut.

10.5.07

bedrock ^{on} ~~high~~ channel + squared shape.

surface of bedrock seems worn esp to E of class

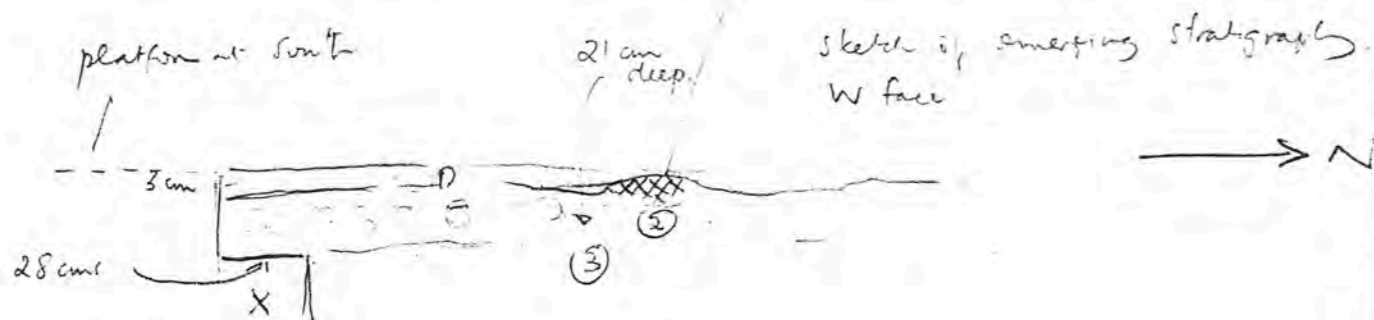
drawing 10.5.07 p.3.

platforms keyed in 10.5.07 p.3

* [Stratigraphy W wall of Tr 1 W [2]
 11.5.07 p.2..

Tr 1 W locus 2

Limestone rock.



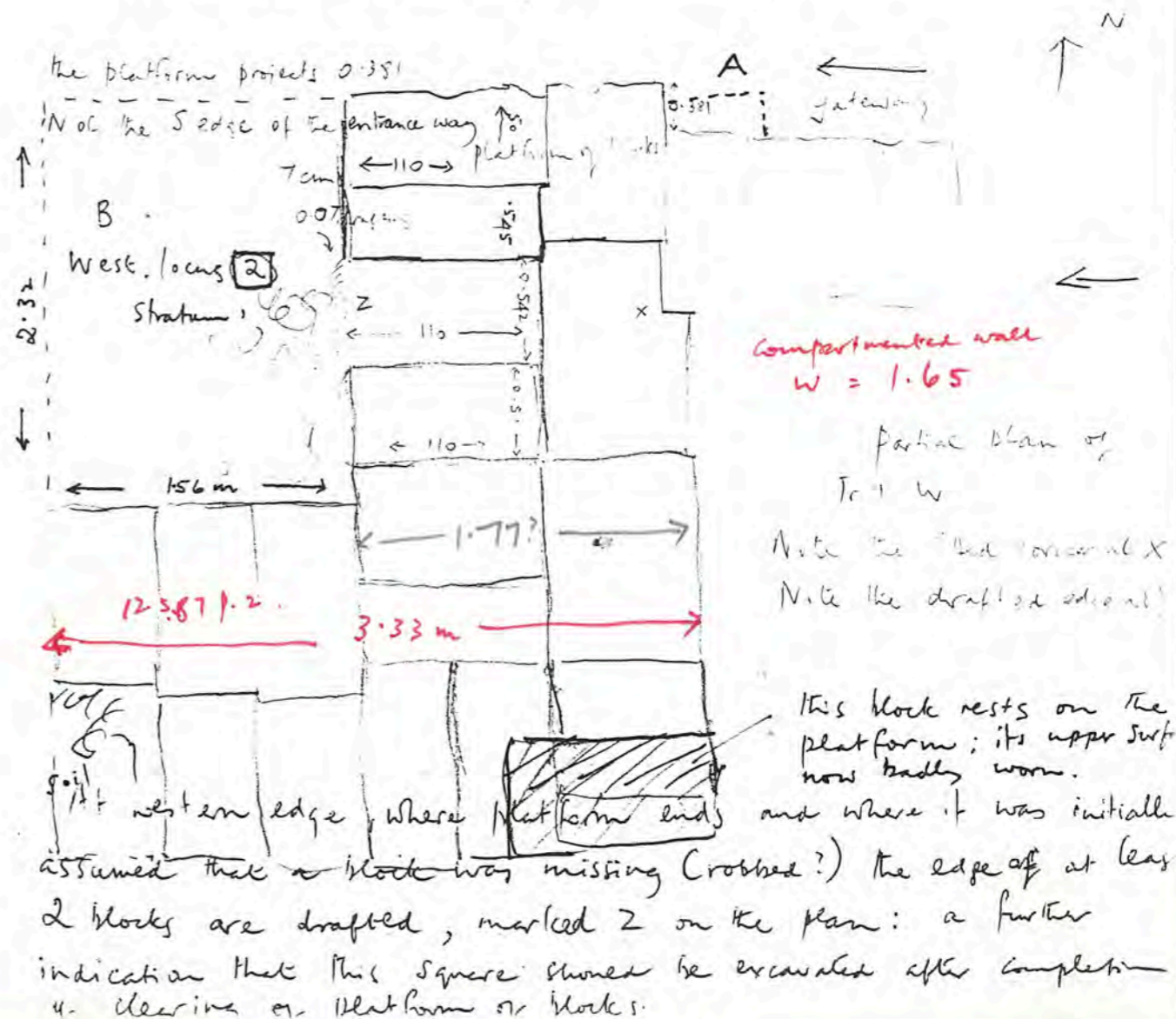
- ① is a thin layer of topsoil
- ② is a fine brown soil with much larger blocks of limestone
- ③ is a whitish powdery deposit with small clumps of limestone

a large block of rubble W of the wall, which has been struck with a pick has a bright white powdery substance now in the pick holes. A small sample of this stratum taken from Tr 1 E ③

At the spot marked X, for 28 cms next to the platform block at the W of locus 2, is light brown soil. The whitish powdery deposit does not reach as far as the wall. This is true also on E side of locus 2. Something similar happens in Tr 1 E where there is a fine light brown soil against the wall. I assumed here that it was below the whitish deposit but some of light brown soil lies beside the lower parts of the whitish powdery deposit.

Trench 1 W

Work continues here close to the wall, removing the soil from the platform of blocks. Indications are that the platform continues beyond the S edge of the entrance way. At this point some soil is free of the large tumble, so work continues here from S → N where possible. If the platform continues, the tumble will be cleared at removal for further examination of the structure.



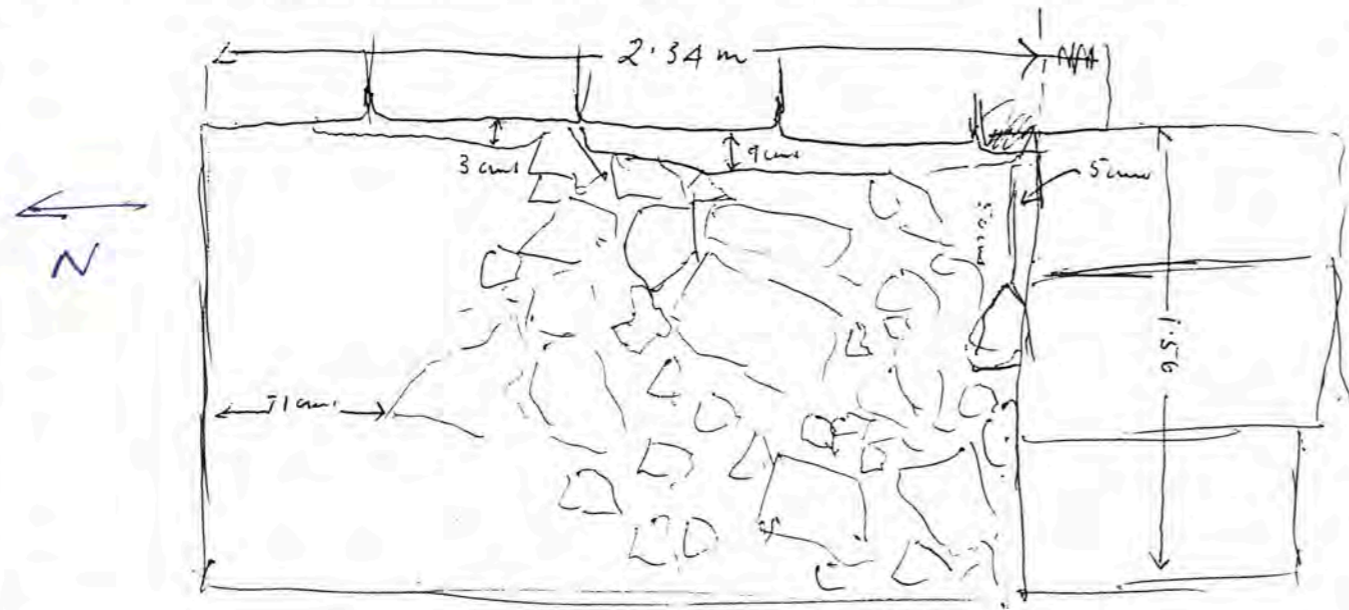
Compartmented wall
W = 1.65

Partial plan of
Tr 1 W
Note the drafted diagonal X
Note the drafted diagonal

This block rests on the platform; its upper part now badly worn. and where it was initially assumed that a block was missing (crossed?) the edge of at least 2 blocks are drafted, marked Z on the plan: a further indication that this square should be excavated after completion of clearing of platform or blocks.

Tr. 1 W locus 2

10.40 am. photographs from all directions of exposed and cleaned tumble in locus 2. Tumble lies in S part of locus. It is level with, approximately the bottom of blocks that form the platform. From the edge of drafted blocks, the depth to the next course which projects a little is 44 cms

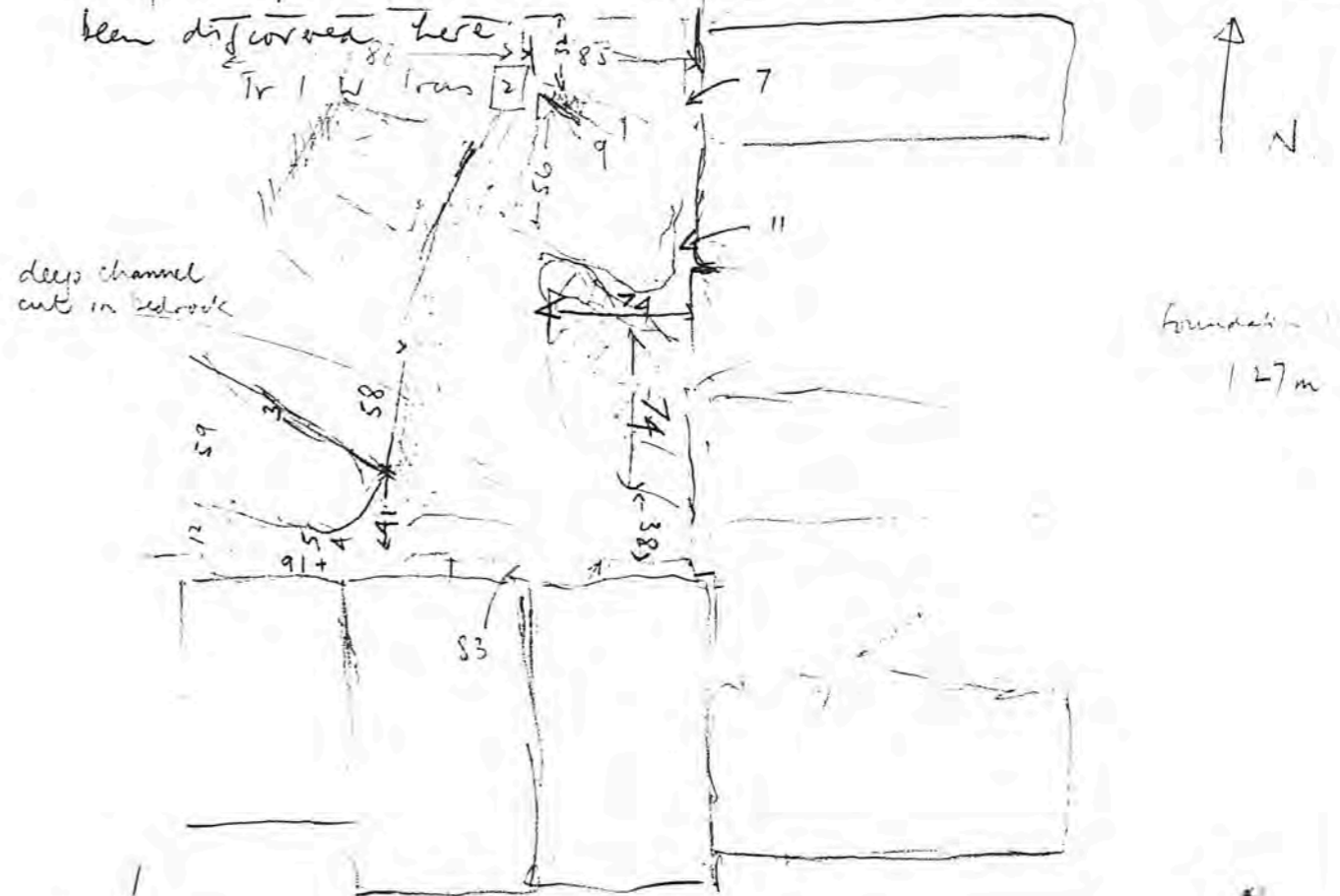


Tr. 1 W locus 2


After photography, work continues in the N section of the locus. to see if there is tumble a little further down. The pottery is kept with the rest of today's meagre finds as stratum (4). The tumble stratum will be called (5). Some pieces of ware were immediately from (4) at N. Some limestone chips mixed in soil.

Tr. 1 W [2]

The bedrock appears to be blackened at a point near the W face of the platform. However no amounts of carbon have been discovered here.



blackened area. [Beneath the platform on both the E and S side of the locus, the foundations are consist of 2 large blocks on each side

[This foundation continues beyond its join with the E face of [2] 

Tr 1 N

10.5.87 p.2 "bedrock seems to coincide with E + W boundaries of the platform"

10.5.87. in opp. gateway

bedrock rises steeply

bedrock much higher than in Tr 1 W [2]

spindle whose form 

87.003

in stratum of powdery white limestone not far above bed-rock

NB 10.5.87 p.1.

- ① = top soil
- ② blocks & rubble
- ③ white powdery substance.

small blocks of rubble on bedrock, at bottom of deep white powdery deposit.

∴ abandoned & remaining of construction work.

Stratigraphy above the blocks that span the gateway.

10.5.87. p. 4.

Tr 1 N

6.5.87 p.2.

N boundary is 80 cm from N edge of gateway. preserves intact the smoothed section of plaster. shown five sufficient space to uncover N ~~side~~ face of gateway

large tangle removed. + exposes

③ ~~②~~ fine light-brown soil in abundance behind + below.

6.5.87 p.3

① top soil (removed 1986)

② plaster floor = white powdery stratum.

③ fine brown soil (+ rubble)

6.5.87 p.3.

7.5.87 p.3
⊕ large rocks below powdery deposit

is entrance way is different from other stratigraphy.

∴ putting 6.5.87 pp. 1.6. inc. on face w. rubble of semi-coarse red soil.


6.5.87 p.5

② = the familiar thickish stratum of white powdery deposit mixed with limestone chips.

perhaps 43 cm deep. (w. large stones)

at top. 20-17 cm. fine + powder no soil mixed in.

at c. 20 cm. same admixture of light brown clay.

How come.  close to S wall of gateway: soil is down to 34 cm N of S side of gateway. N of this fine white powder again.

3.5.87 (3) small bronze pin or needle (87.002)
20-40 cms N of corner of square of blocks
↓

do not sit on bedrock :: 9 cms of soil

do not have squared surfaces ∴ not closely contiguous.

in interstices loose whitish powdery loam with limestone chips

∴ laid before construction of lower wall?

4.5.87. work on clearing foundation trench at S = (4)

- 1 large jar body frag. pale orange clay.
- 3 rim frags small bowls. partially painted w.
- 1 rim frag. fine coarse ware bowl. (small notches at rim)
weak red-brown paint.

6.5.87 Sweeping + photographs.

foundation course of curtain wall lies a full course deeper (than ^{top} of tower facade).

need to explore nature of "plaster floor".

∴ remove large tangle. previously left out of caution.

(1) top soil

(2) tangle with light brown soil
very few bones + frags

^{immediately} beneath tangle, soil is light-brown as before
but more mixed with white powdery material of the stratum below (lower than the second preserved course)
soil + chips → = depth of full course of wall blocks.

much tangle in the gateway E of the wall-line

(3) white powdery limestone at top of wall.

↓
only a few centimetres deep at S
v. fine light brown soil beneath.

- 2 small pieces of ^{just above bedrock} fine black glaze (Mtic clay)
 - 1 with traces of rouletting (2.5.87 Tr 1 E (3))
 - 2 rim frags small bowls light-brown/red paint.
- 2 doz coarse ware wall frags.
 - 3rd tiny pieces of carbon in (3) at join line to curtain wall.

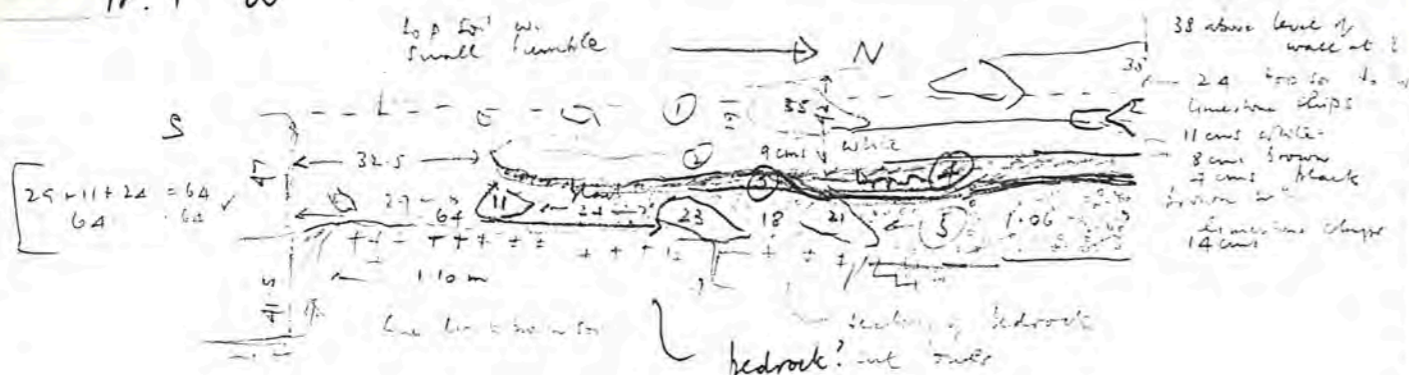
(4) fine light brown soil in foundation trench
Some large chunks of limestone

* 69 cms from top of bedrock
* from lower preserved block in centre curtain-wall 1.75m

bedrock near plaster patch on F : strange shapes on its surface
but worn and smoothed as if walked on regularly in antiquity
6.5.87 p.2. → "strange protrusion at N end of trace which has a smoothed upper edge"

JIC NWT
Tr. 1 W

11.5.87
13cm tumbler



Note that the foundation blocks, whilst not smooth are carved vertical in distinction to the cushions of the wall blocks proper.

Close to blocks at the S of the tower, no concentration of white powder deposit

- ② ③ ④
- ⑤ ⑥

The white powdery deposit can also be found in Tr 2 NWT on each side (S and N) of the platform as it is being exposed. In patches the powder stratum is very concentrated and not mixed with soil etc.

The N section of Tr 2 (beyond the platform) are quite distinct small chips of limestone. Perhaps these have not been crushed because work was conducted from the inside of the tower and trimmed limestone beyond the wall was not trodden on.

The E face of the tower wall with its plaster patches shows that plaster was mixed (from the crushed limestone). Perhaps

JIC NWT

7.5.87

Tr 1 W ② ⑤

12 noon

Beneath the tumbler is the same red-brown close packed soil. We remove the tumbler first. Yes we do.

Weather clouding over slightly from time to time. Beneath the tumbler, several coarse ware fragments appear.

12.35 pm two small frags of bone + some more.

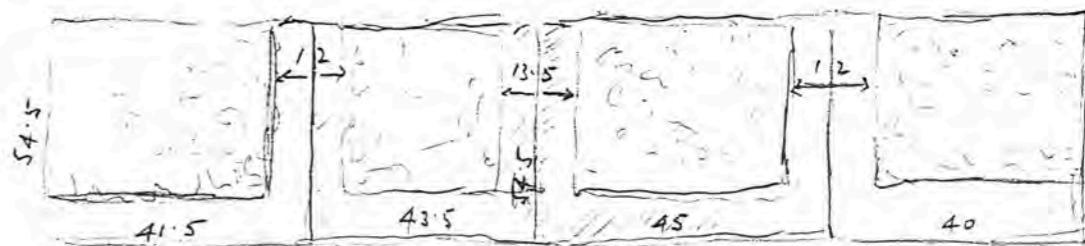
The soil is dark

Tr 1 N ③ Work continues along S face of gateway

The drafting on the edge of each block is quite wide. The drafting continues along the base of the block where it meets the foundation course. These seem to me now to

be merely drafting and not sockets for fixing a door. Some decorative element is added to the face of the gateway, perhaps.

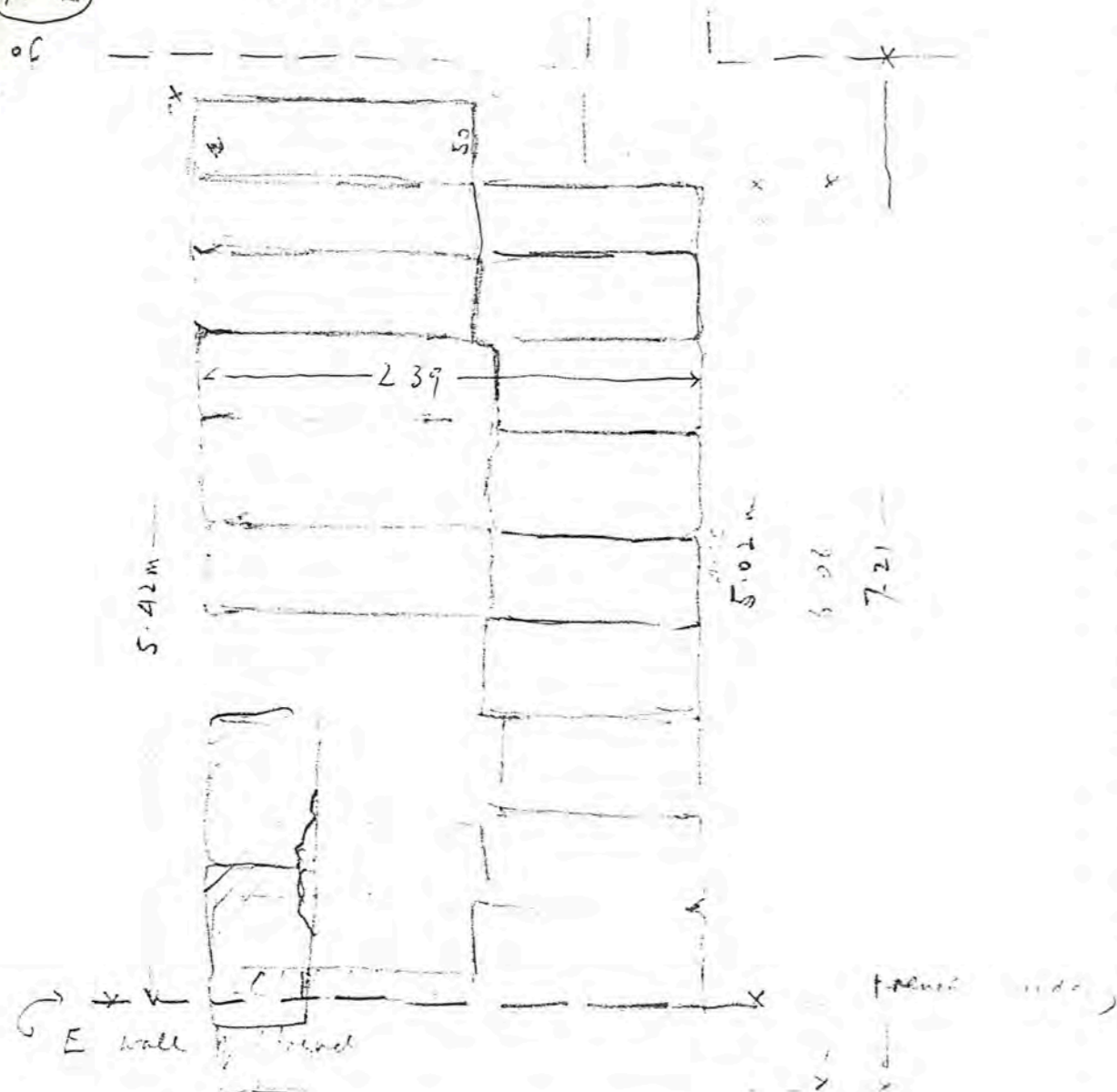
Only 4 frags of pottery so far from the soil stratum, and these early in the morning.



NWT as N
 structures

Tr 2

W wall of trench



The platform is two blocks wide. Therefore resembles the EW platform in Tr 1 which is also two blocks wide. In Tr 1 the width is 2.34m; in Tr 2 the width is 2.39m.

JK. NWT

10.5.87

Tr 1 N

What I had supposed to be bedrock at the N of the platform are actually several more foundation blocks which look as though they could span the whole distance of the gateway. Immediately above these blocks is a thick stratum of powdery limestone which has a thin deposit of light brown soil through it. There are limestone chips in the brown soil. The total of the stratum is 49 cm.



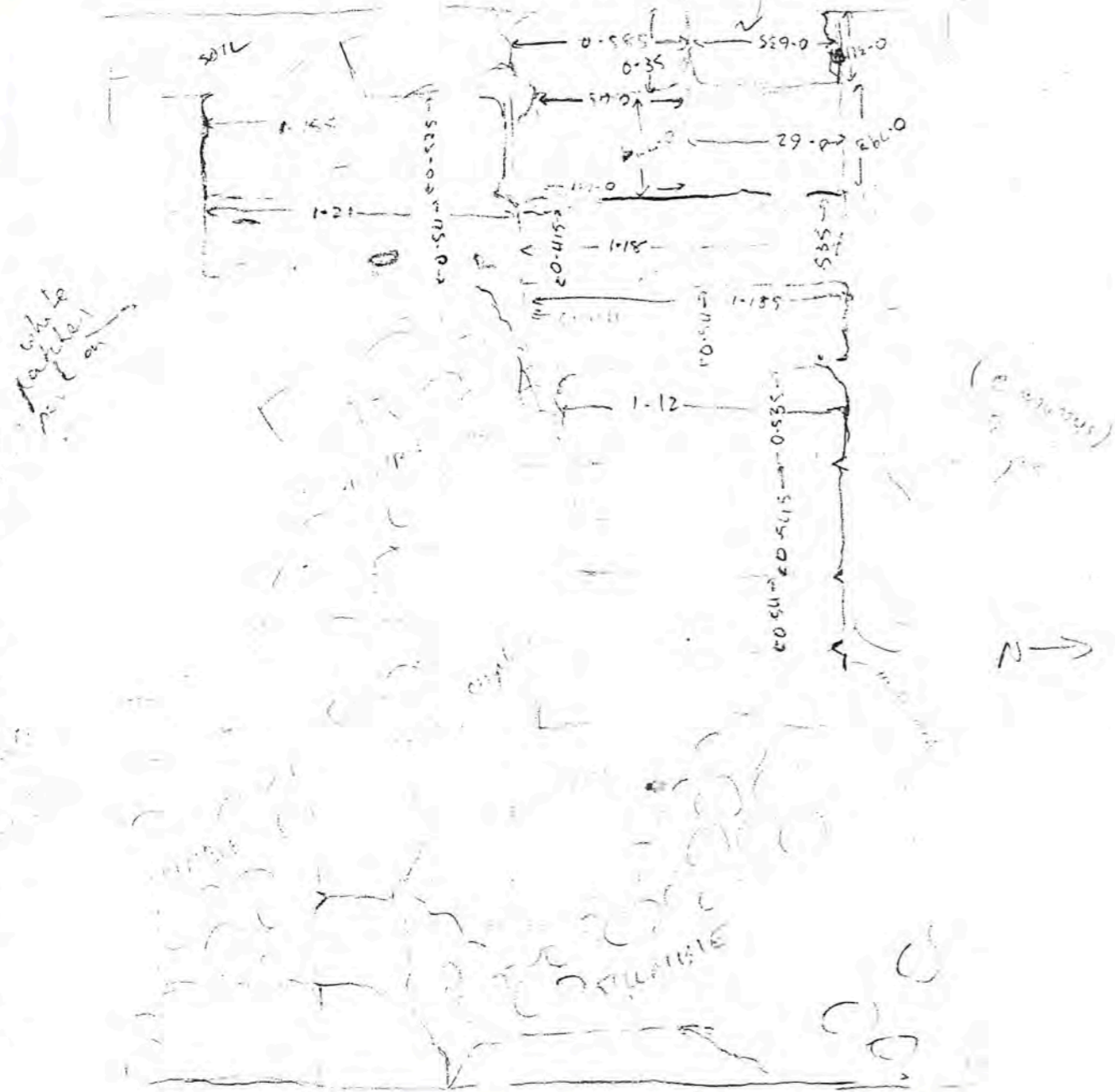
12:15 B+W photographs of this section = N wall of [3] opposite the platform = Roll 5, 23-25
 also colour photographs also from S = end of Roll dated 10.5.87

Tr 1 W [2] 12:35 pm photographs in B+W from all directions also colour B+W = Roll 5, -33.
 showing cuttings in bed rock. cleaned and dusted as best as possible on a most windy day.

Jebel Khalid North West Tower.
Trench 2.

060587.

lower level
platform
course
down



Pottery: Tr 2 1 1 2 ✓
 Tr 2 3 4 ind. piece of rosette stamped / incised } all
 coarse ware

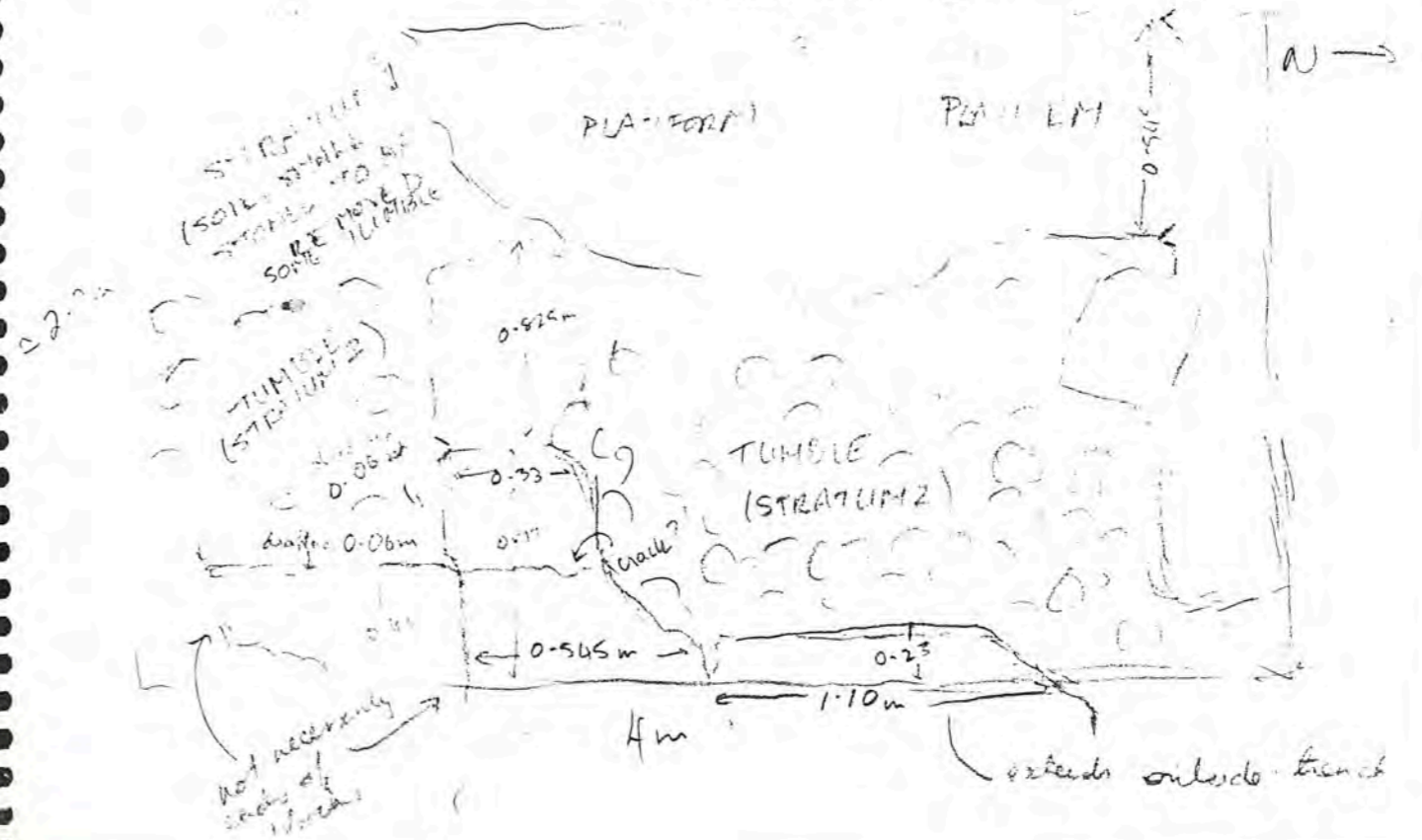
5/5/87

Jebel Khalid, North-west tower, trench 2 050587.

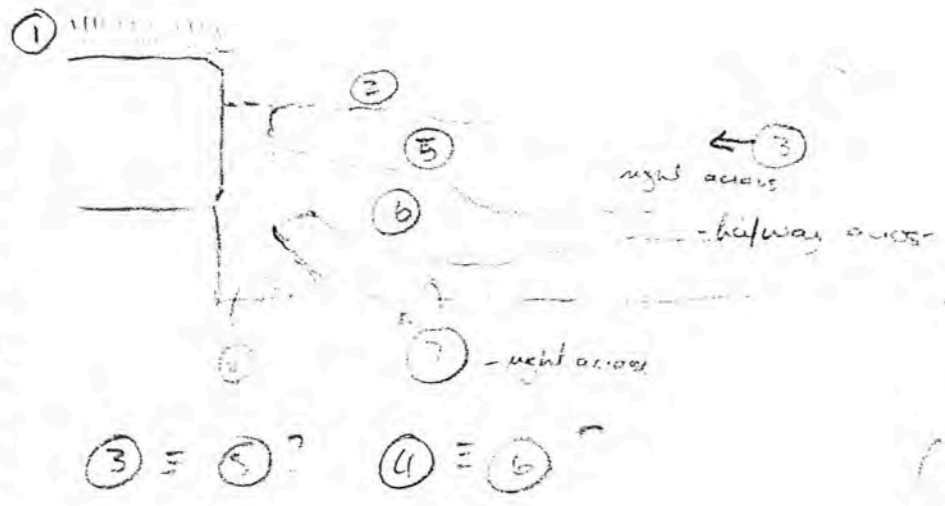
11:00 am. past the drafted blocks running east-west, the tumble (stratum 2) appears to thin out, and stratum one (topsoil and small stones) continues down to the platform. Further west, however, there seems to be a lighter, whitish layer (stratum 3?) below stratum one, with no intervening tumble (stratum two).

Along the northern edge of the platform are three triangular shaped cuts down the side faces between the blocks - they seem to be where the drafting meets.

area of platform cleared had stratum one only



Jebel Khalid
North - West Tower
Trench 2

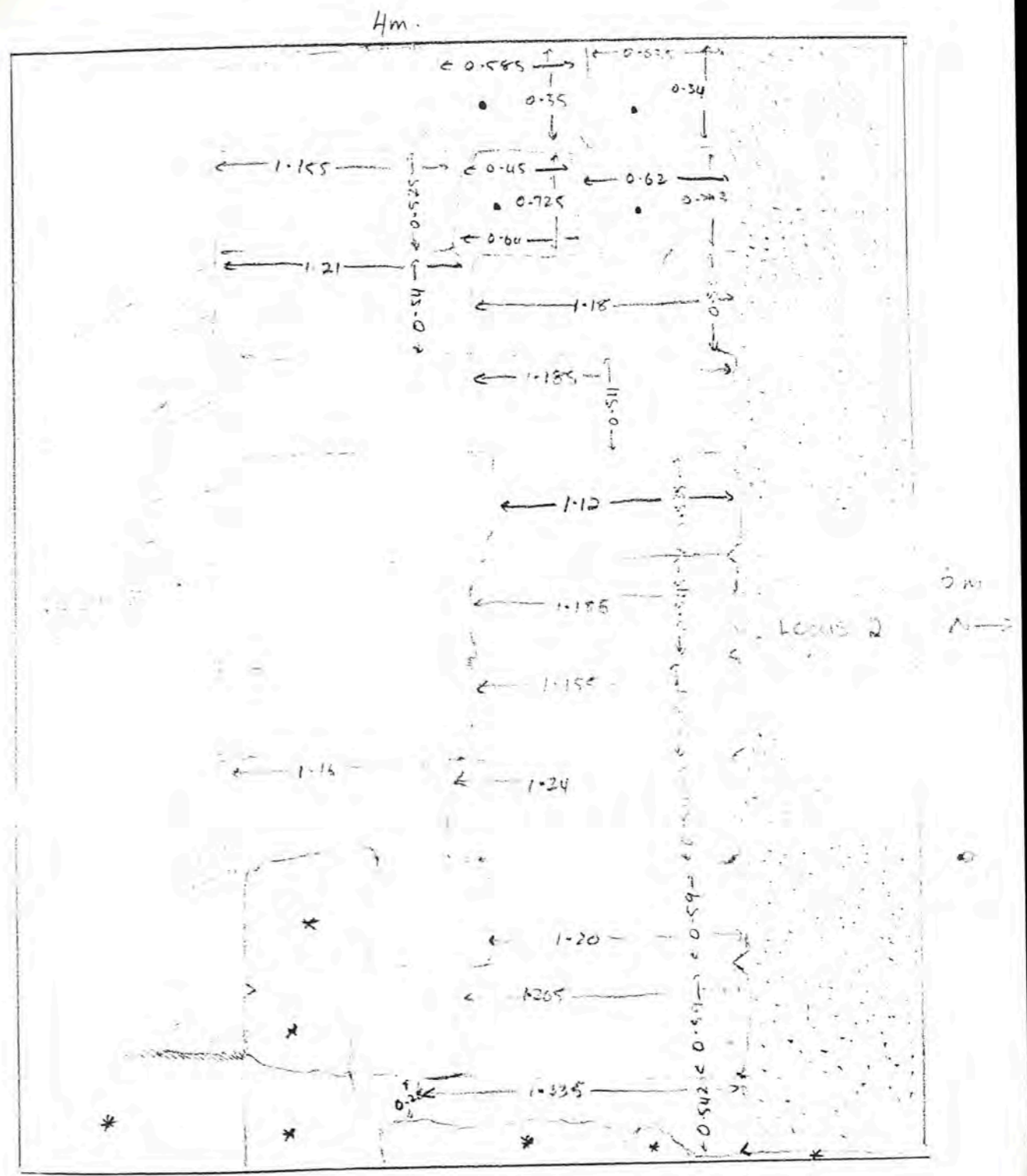


South face
Locus 3
(N. to make)

south of fallen worked block

11-50 am. West end Locus 3 Middle Brown layer directly below topsoil, with some limestone chips in it. Is it going to join up with 6? Or is it similar to 2, as in 2? No pottery here so far. Also very little pottery eastern half 3.

Locus 3 on north side of trench, part drafted blocks, getting brown soil. & some chips, along the sides of the "platform"; between 5 + 7, if 6 does not extend right across 3, which at the moment it does not appear to do. Or is it in fact connected with 6?

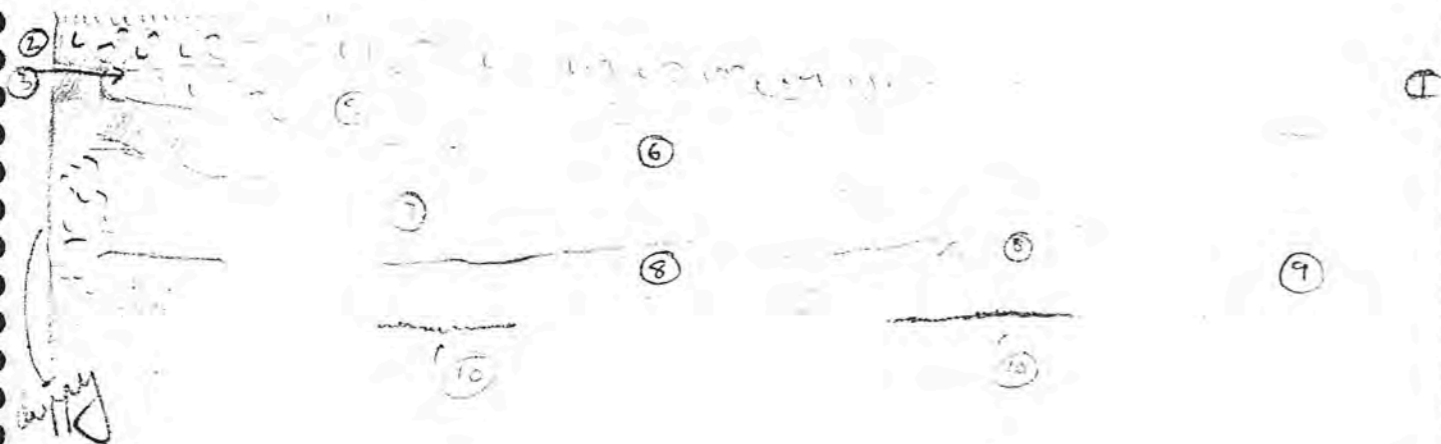


Jebel Khalid North West tower, Trench 2.

Jebel Khalid
North West Tower

Trench 2. = stratum 9.

a lighter ~~soil~~ layer - is it as pale as ⑦? Certainly it has more chips in it than ⑦. Also, right at the eastern end, is more of the fairly dark soil associated previously with the block faces (cf. stratum 4)



4:45 am. east end locus 3: what was originally thought to be bedrock is only a small section of bedrock cut like a block, or a block. It appears to be connected with the thin "course" noticed before. The "block" has a triangular shaped cutting ~~in it~~ - I am not sure at the moment whether this was deliberately made or not. The actual bedrock has not yet been reached in the east.

11:00 am. Bedrock reached; at a lower level in east end locus 3. Block appears to have been put in at the corner for strength? If limestone layer (stratum 7) = floor, it is below floor level. Bedrock has a channel

Jebel Khalid
North - West Tower
Trench 2.

Weather - a little hazy, but sunny.

Workers - Ajamuna, Dnanea, Hassan Hassan, Salah.

6:45. Photographs locus 2.

NB Plaster "bandaid" noticed on foundation block in locus 2.



continue clearing locus 3 to stratum 7. At the moment, stratum 6 does not appear to exist in the western end of locus 3, but stratigraphy moves directly from ② ① to either ⑤ or ⑦?

7:45 am. No pottery so far.

8:15 am. At west end ^{yes} locus 3, hit bedrock, still in stratum ⑤ or ⑦. If it ⑦? Stratum ⑥ now seems to be appearing on south side of western end locus 3 (digging west → east). Now start digging at a deeper level in east end locus 3. Still in stratum ⑦; but occasional evidence of darker soil around blocks northern side.

NWT

Structures.

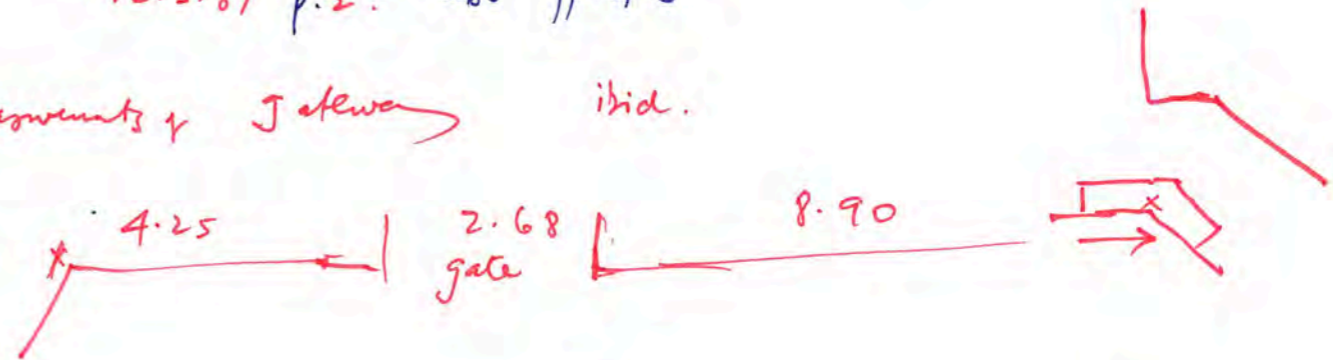
See Connor Tr 1 E 6.5.87 p.1

discussion of foundation Mock, at deeper level than tower facade. } of curtain

measurements for join of curtain at S to tower.

12.5.87 p.2. also pp. 4-5

measurements of gateway ibid.



for join at N see ibid (Connor 12.5.87 . p. 4)

Solid-hilt. Platform

12.5.87 p.2

fullest width E-W = 3.33 m.

drapings on face of gateway

Totally covered by white powdery deposit
[exc. for brown soil against it; 34cms wide]