



STUDENTS
NOTE BOOK

No. 593

JEBEL KHALID. 1987 Br 1
NORTHWEST TOWER Tr. 2.

GILLIAN SHEPHERD.

4/5/87

Jebel Khalid 040587 North-West Trench 2.

Weather - sunny, cool breeze.

Work starts approx 6:40

Workmen: Fakhamad, M. Hemad, M. Thareff, Yurque Mousor

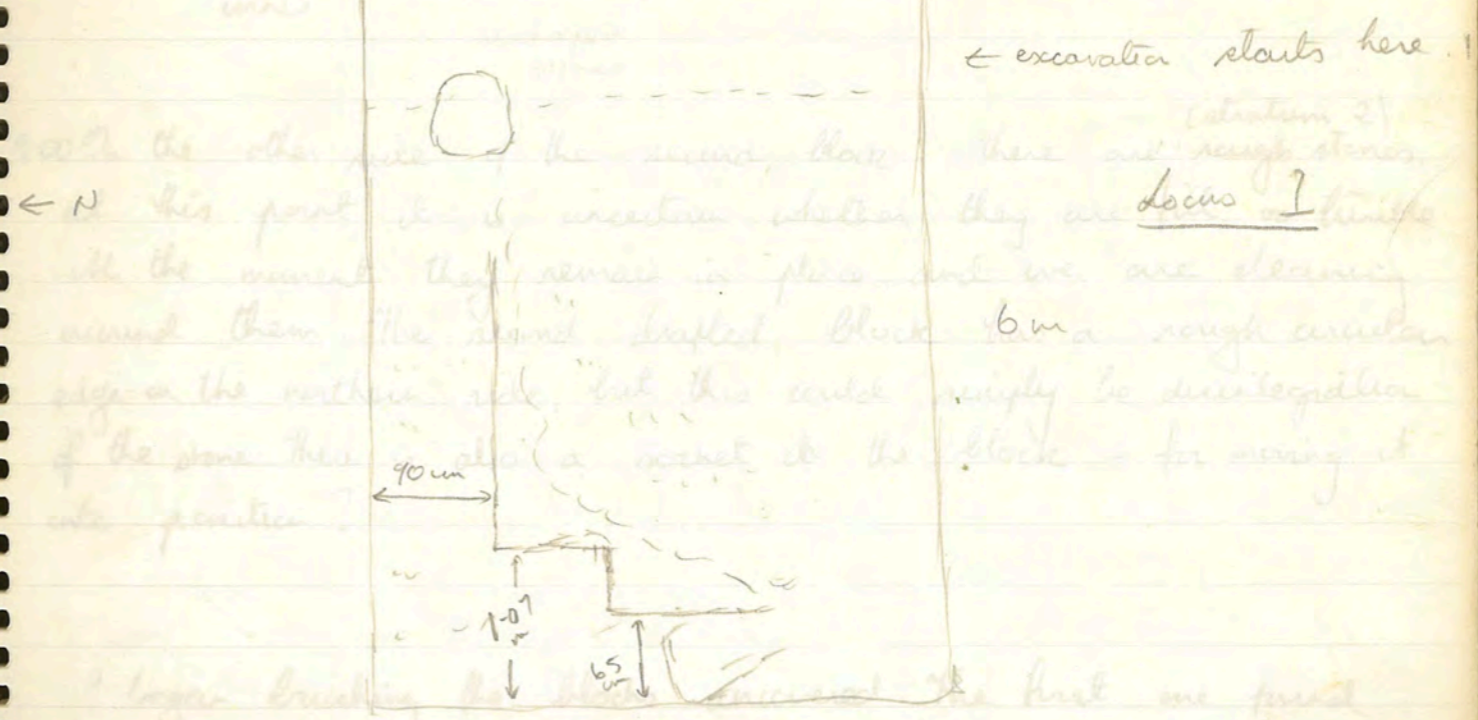
We laid a trench on Thursday 1st May 1987, 6m x 4m, running approx. east - west.

Hole 2, 21-

- Frame 21 - looking east
- " 22 - looking south, eastern half of trench
- " 23 - looking south, western half of trench
- " 24 - looking north, eastern half of trench
- " 25 - looking north, western half of trench

4m

(Trench 2)



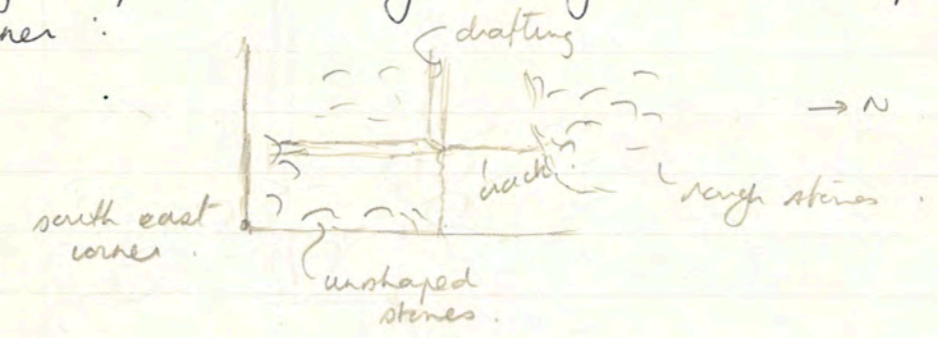
□ = locus ○ = stratum

J. R. North - West tower 080587 cont'd.

(stratum one)
7-24 am: start clearing soil, (lightest brown, apparently blown in) and small stones from south-eastern corner of trench, moving across the trench towards the north.

Right in the corner are a few rough stones, possibly tumble - but we didn't remove them. Further along was a block with a drafted edge, possibly matching those on the other side of the tower.

(stratum one)
8-15 am continue clearing top soil. Another block with a drafted edge exposed at right angles to the first, making a corner.



(stratum 2)
9-00 On the other side of the second block there are rough stones, at this point it is uncertain whether they are fill or tumble. At the moment, they remain in place, and we are clearing around them. The second drafted block has a rough circular edge on the northern side, but this could simply be disintegration of the stone. There is also a socket in the block - for moving it into position?

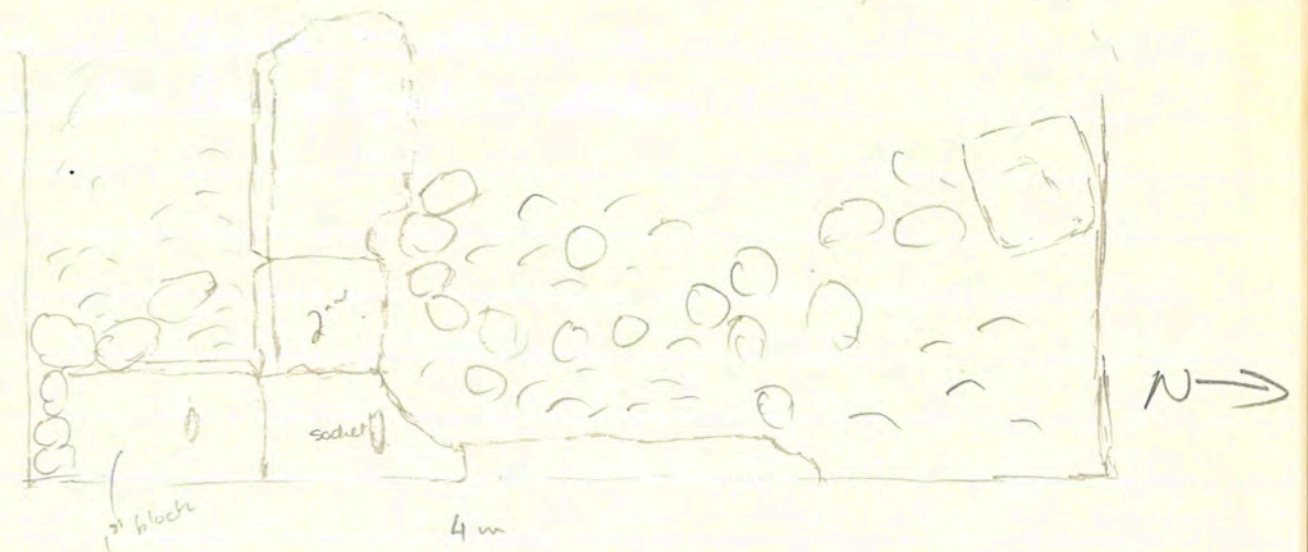
12 noon. Clearing of the rubble / fill continues. If it is fill, there

I began brushing the blocks uncovered. The first one found has a few white patches on the surface, which seem to be

G. K. North - West Tower Trench 2 ~~040587~~ cont'd . 040587.

the brown coating on the stone has chipped away. Is it plaster, or simply white limestone showing through where the outer surface has fallen away?

So far, all blocks have sockets in them, quite deep, but not in any apparent deliberate arrangement.



The occasional piece of coarse ware is found; one seems to be a chipped rim. Also a very small, shapeless piece of greenish metal (bronze?) was found in the drafted corner (requires object number) in stratum 2.

12 noon cleaning of the tumble / fill continues. If it is fill, there should be another retaining block further to the west, possibly to the north as well. The stones within the drafted section

040587 Tr2 [1] (2) - 3 small coarseware fragments,
- 1 heavy coarseware fragment.

4/5/87

J.K. North-west tower, trench 2, 050487, cont'd.

are probably tumble, and will be removed eventually

Total. (in soil of tumble - new = stratum 2 not 1)
4 pieces of pottery (coarseware) one very thick, one seems to
be a chipped rim. Also small corroded piece of metal, probably
bronze. (Tr2 [1] (2) ✓)
(needs object number. (Tr2 [1] (2) ✓)

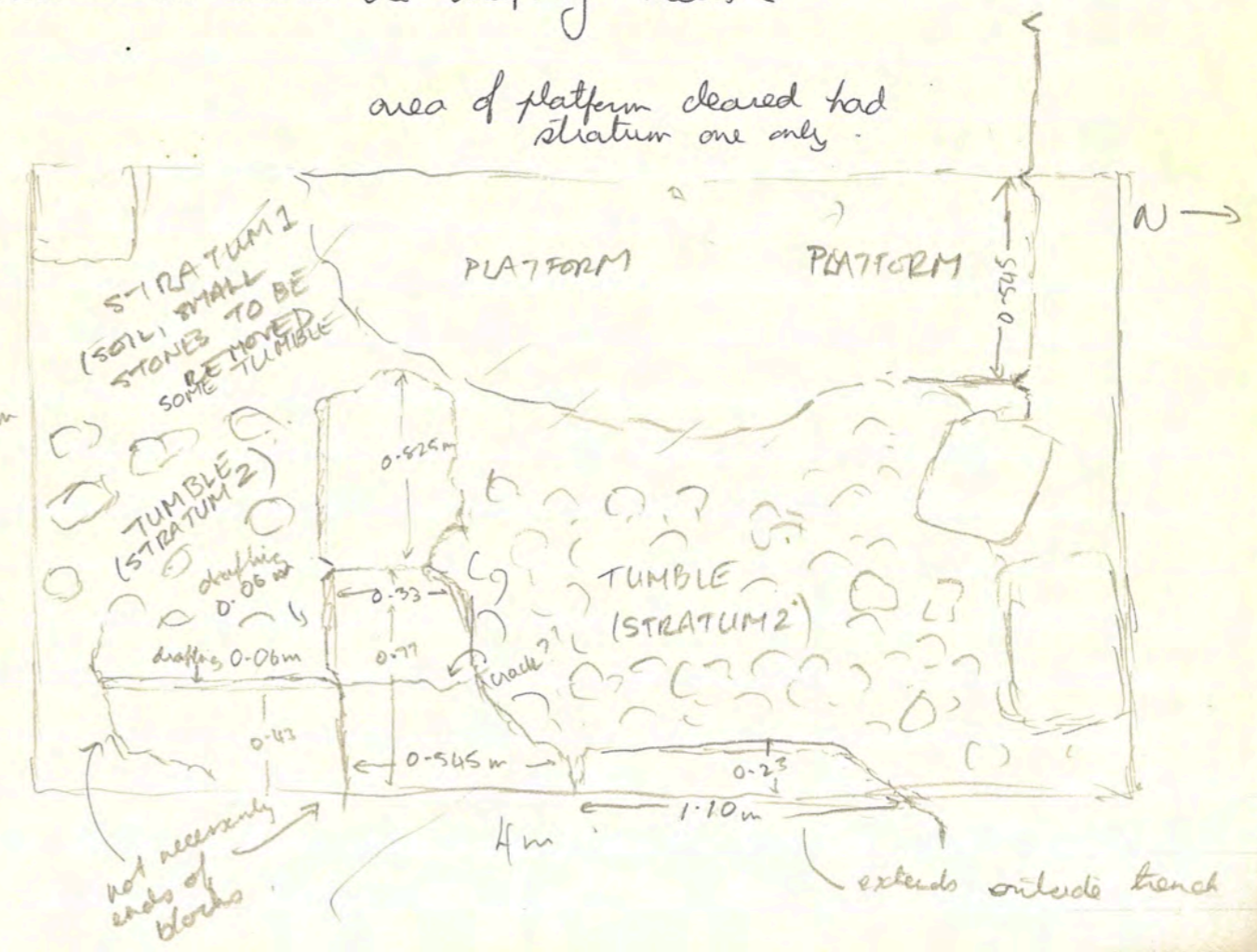
redder soil, tumble = stratum 2.
greyer, thin line of topsoil = stratum 1.

5/5/87

Jebel Khalid. North-west tower, trench 2 050587.

11:00 am. past the drafted blocks running east-west, the tumble (stratum 2) appears to thin out, and stratum one (topsoil and small stones) continues down to the platform. Further west, however, there seems to be a lighter, whitish layer (stratum 3?) below stratum one, with no intervening tumble (stratum two)

Along the northern edge of the platform are three triangular shaped cuts down the side faces between the blocks - they seem to be where the drafting meets.



050587

Tr 2 [1] ① - five coarseware fragments (body fragments)
- one ^{small} fragment, fine, buff clay, interior pink.

5/5/87

Jebel Khalid Northwest corner
Trench Two.

12:00 noon - continue clearing stratum one (topsoil, small stones)
from area westwards of tumble, exposing platform.

Work continues until finish \approx 12:50 pm.

Seven
four pieces of pottery, coarseware, found in stratum one
(Tr 2. [1] ②) Tr 2. [1] ~~2~~ ①. ✓

Jebel Khalid North-west tower.

Weather - sunny, clear.

Workers: Hassan Hassan, Fouquei Moussa, Branea, Ktherah.

≈ 6.30am: continue clearing topsoil (stratum one) in western half of the trench.

The topsoil ^{stratum one} seems to be slightly darker than the soil around the tumble (soil + tumble stratum 2?)

At western end of trench there does not appear to be any tumble, but only topsoil, soil (very similar in quality to the topsoil - tho' topsoil has roots + could be slightly darker) and small stones.

In the middle of the trench we are moving westwards trying to take of the top layer of grass, light brown soil and follow the lighter band noticed yesterday in the topsoil.

A small piece of ~~top~~ pottery is found here, with part of a flower or rosette stamped or incised on it. It is fairly thin, so it seems to be from a small object - maybe a lamp, from the decoration - requires object number.

In the south-western corner is a patch of lighter soil below the top soil; it is left in place for the moment.

The white band in the middle of the trench has been found to follow; there was a layer of limestone tumble behind it - would the light soil have been due to disintegration of

Jebel Khalid
Northwest tower Trench 2.

stone behind?

8:00am. Further whitish patches along the southern edge - they are very irregular, and it is difficult to tell whether they are significant or not - could they just be crumbled rocks?

8:45 am - still clearing lopsail, now across the middle of the trench, there appears to be some rather heavier tumble here, although at the moment it does not seem as densely packed here as along the eastern end. The odd white patch is still appearing along the southern edge, but not in any consistent pattern.

9:20am. Start more clearing along the platform edge on the northern edge of the trench, taking off lopsail only. In the part cleared yesterday there are some larger blocks (tumble) which appear to have been shaped. Clearing goes along the northern edge to the west & will go around the corner. Odd white patch (small) appearing at random, as on the southern side - just disintegrated limestone is natural rather than, say, from the finishing of the blocks? Would expect a complete layer if it was the latter?

at the western end of the trench blocks are being exposed, which seems to belong to about a course below the main platform. There seems to be only soil and small stones (stratum one) at present in the corner & "step" up to the next level, and this is beginning to be cleared out.

Section along the western southern edge with the white patches just below the top soil is left in place, as is the patch of kaaseri tumble, more or less in the middle of the trench.

11-35 am more loose soil, small stones (stratum 2) cleared from around the tumble in east end of trench.

11-50 am. More of the lower level in the north-west corner exposed. The soil appears a different colour from the thin layer of leopard (stratum 1) above - it is rather more reddish (= stratum 2, appears to be the same soil as that cleared from around the tumble in the eastern half of the trench.

at the western end of the trench blocks are being exposed, which seems to belong to about a course below the main platform. There seems to be only soil and small stones (stratum one) at present in the corner & "step" up to the next level, and this is beginning to be cleared out.

Section along the western southern edge with the white patches just below the top soil is left in place, as is the patch of kaaseri tumble, more or less in the middle of the trench.

11-35 am more loose soil, small stones (stratum 2) cleared from around the tumble in east end of trench.

11-50 am. More of the lower level in the north-west corner exposed. The soil appears a different colour from the thin layer of leopard (stratum 1) above - it is rather more reddish (= stratum 2, appears to be the same soil as that cleared from around the tumble in the eastern half of the trench.

Occasional pieces of coarse ware found, one with an incised line across it. Stratum one only.

060587

Tr 2 ① ② - 3 coarseware fragments, buff fabric
- 1 fragment coarseware, pink tinge inside

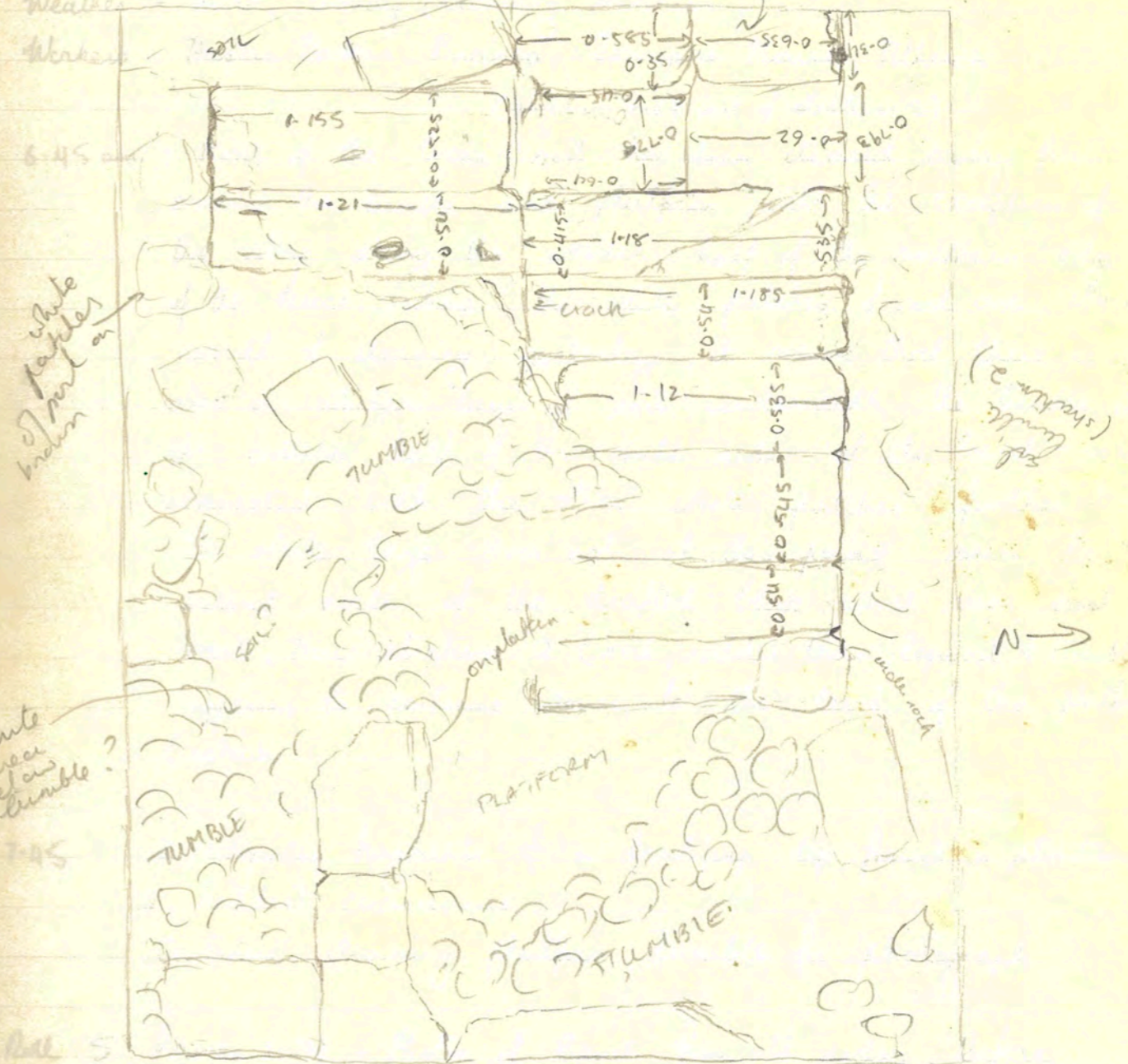
Tr 2 ① ① - small lot coarse ware fragments

060587

Jebel Khalid North West Tower.
Trench 2.

Trench 2
Weather
Wreck

Lower level platform
coarse ware down



Pottery: Tr 2 ① ③, ind. piece c rosette stamped / incised } all coarse ware
 Tr 2 ② ④ }
 Tr 2 ① ② ✓

Jebel Khalid
Northwest Tower.

Trench 2.

Weather - mild, cloudy (becoming sunnier)

Workers - Hassan Hassan, Branea, Tourque Mousa, Mtherch.

(stratum one & soil of stratum 2)

6:45 am : Most of the loose soil has been cleared away from around the tumble and platform, with the exception of the strip along the western half of the southern edge of the trench where the white patches of soil are. As a result of clearing yesterday, it seems that there is also a whiter layer of soil underneath the tumble in the eastern half of the south side of the trench - is it connected with the other white patches further along? The white layer does not, at this point, seem to extend north of the drafted block which runs east-west. Here stratum 2 (soil, redder than topsoil & tumble) appears to continue down to the level of the platform (which

7:45 : 2 adjoining fragments of a bowl/sep lip found in stratum 2. Reddish coarseware.
Continue clearing platform, Tumble for photographs

Roll 5, frames (1-14) - Photos of trench from all sides before removal of tumble from eastern section of trench, with the aim of exposing the platform which is (hopefully) beneath.



Jebel Khalid
North-west corner.
Trench 2.

9:30 am: white area noticed under tumble near south-east corner does not appear to continue under the tumble, but was simply patches, similar to those on the south edge in the western half of the trench. Basically it appears that stratum 2 continues to platform level in eastern half of the trench (stratum 2 being removed)

10:45 am: more white patches in the south eastern corner, just under the top layer of tumble. Are these white patches along the southern edge related to white stratum in PC's trench? Result of working the limestone blocks?

Continuing clearing stratum two north of drafted blocks. So far, ~~no~~ no white patches here.

11:25 am. Platform continuing under the tumble being removed north of drafted block. (slightly fewer largest stones under top photographed layer - but still appears to be same stratum)

Area in south-east corner with white patches left unexcavated for the moment. However, it is now uncertain whether the platform continues under this in the south east

070587

Tr 2 ① ②

- 1 rim fragment, simple bowl, partially painted
- 1 rim fragment, simple bowl, buff clay, interior pinky-red.
- 1 worn coarseware base fragment, purple in centre of underside.
- small lot coarseware body sherds - includes 2 fragments which fit together.

070587

Jebel Khalid
North-west Tower.
Trench 2.

corner - a little has been dug away & the platform does not appear to contain part the drafted block. However, this could simply be a fault in the stone.

Clearing of the tumble & soil (stratum 2) in the middle of the trench starts, moving southwards to the white patches. Judging from the fact that the platform seems to stop near the south-west corner, there does not seem to be any platform, at least not on the same level, along the south side. This will be verified when the soil with the white patches along the south side is excavated. Is the patchy soil associated with the end back of platform? Results, say, of working a wall, of which only the drafted block running east-west now remains.

12 noon clearing of tumble in centre continues. Clearing of tumble (stratum 2) in eastern half of trench north of drafted block continues. Occasional piece of coarseware found.

Pottery: Tr 2 ① ② ✓
③ ④. Coarseware incl. 2 fragments which fit together.

Jebel Khalid
North West Tower.
Trench 2.

Waters: Mtherch, Branea, Adjamana.
Weather: cloudy, extremely windy

6:45 am : continue clearing rubble at east end of trench, & in the middle of the trench up to the strip of white patches along the southern edge of the trench.

The middle section of the strip between the platform & the side of the trench on the north side also shows the odd white patch here. The soil here also seems slightly lighter, though of the same quality, than say, the soil of stratum 2 in the east half of the trench. This may be due to some mixing of white soil with the darker, reddish brown soil of stratum 2.

7:10. Smaller of the two slipped worked blocks removed from amongst rubble in eastern half of trench (taken off corner of a block?)

New locus allocation: strip between platform edge & northern side of trench now = locus 2. Strip along southern edge with white patches now = locus 3. Apparently platform ends now here.

To 2 (1) (2)
The work is being done in the trench. The platform is being cleared. The rubble is being removed. The soil is being examined. The work is being done in the trench. The platform is being cleared. The rubble is being removed. The soil is being examined.

The middle section of the strip between the platform & the side of the trench on the north side also shows the odd white patch here. The soil here also seems slightly lighter, though of the same quality, than say, the soil of stratum 2 in the east half of the trench. This may be due to some mixing of white soil with the darker, reddish brown soil of stratum 2.

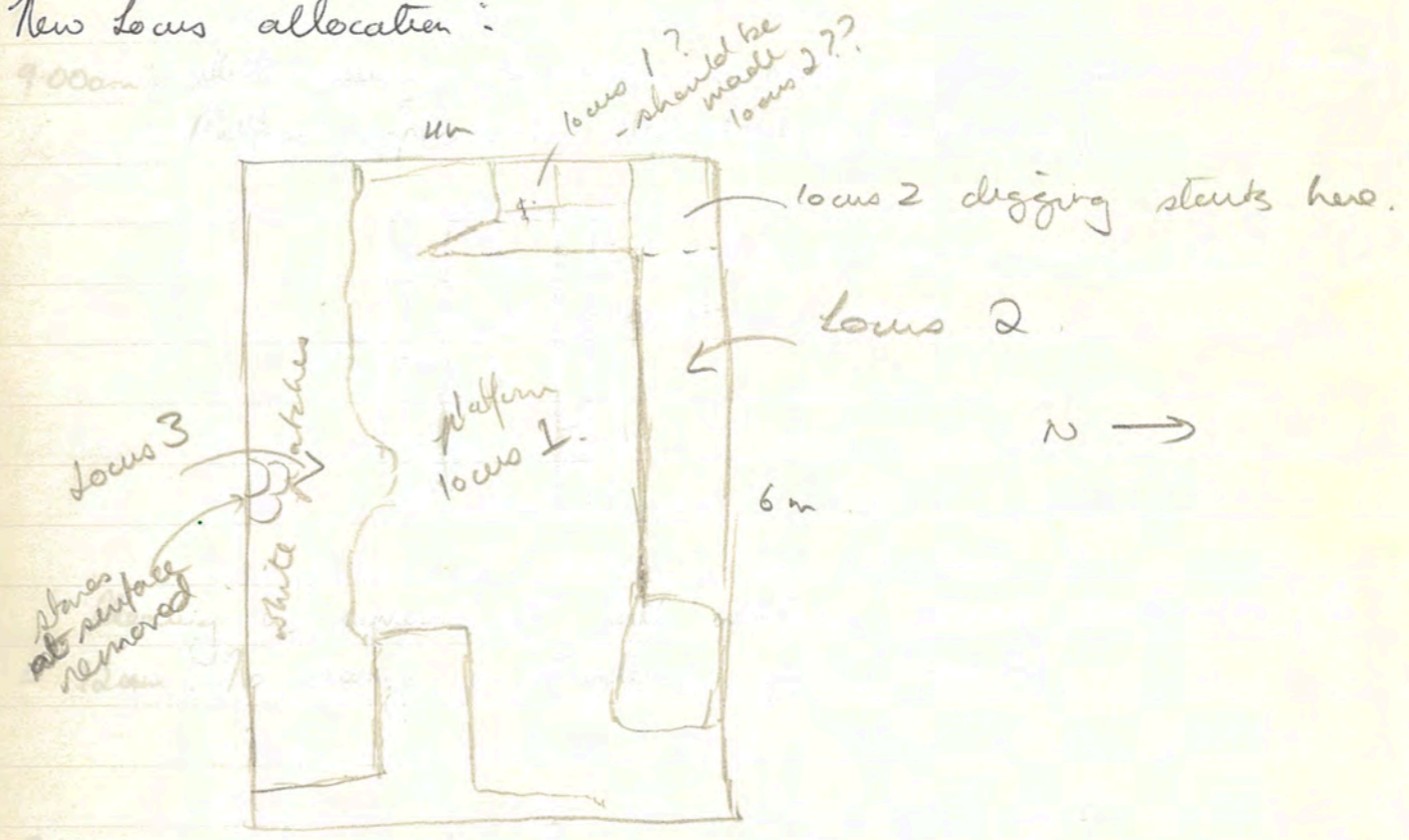
New locus allocation: strip between platform edge & northern side of trench now = locus 2. Strip along southern edge with white patches now = locus 3. Apparently platform ends now here.

Diagram showing locus 2 and locus 3 with arrows pointing to the trench and platform areas.

Jebel Khaleid
North west Tower
Trench Two

New locus allocation:

9:00am



10:55am

8:30am

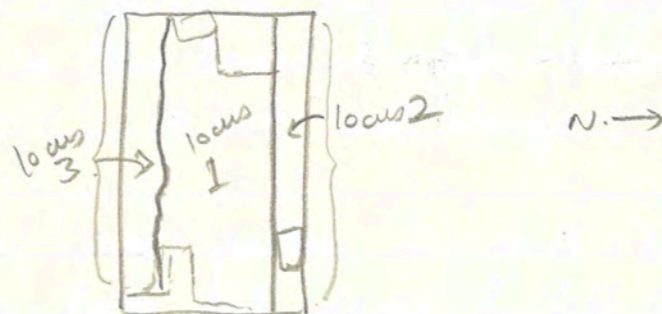
Digging starts in square below in lower locus 2, square in north west corner. Topsoil has already been removed. Now stratum 2 to a depth of about 12 cm (at ^{lower} platform edge). Occasional tumble, soil (stratum 2) in centre of trench has been removed up to strip strip of white patches along southern edge.

Jebel Khalid
Northwest Tower.

Trench 2.

11:25

9:00am: Still clearing rubble in north-eastern corner of trench
Platform appears to stop here (→ locus 2)



12 noon

12. Clearing in square at north western corner continues, to
≈ 12cm. No change in stratum yet. (locus 2)

10:55am. Appear to have reached bedrock in square at
north west corner (not surprising - bedrock exposed
outside trench)

Start digging in locus 2, about the middle. Encounter
large stones, seem to be fragmented blocks (still
stratum 2)

Tr 2

Occasional piece of coarseware appears - but in
general, has been very little pottery so far
today.

090587.

Tr 2 [3] (3) - 4 fragments semi-coarseware, buff fabric.

Tr 2 [2] (2) - 1 base fragment with nipple
- small lot coarseware fragments
- 5 fragments coarse ware, poorly leigated red fabric, to black exterior, slight horizontal ribbing.

Tr 2 [1] (2) - one coarseware fragment

090587

Jebel Khalid
Northwest Tower
Trench 2.

11:25 am. Work starts in locus 3, at south-eastern corner.
Waters (area with white patches, = stratum 3).
Locus 2: few pieces of pottery found, some with black on one side - paint or very poor glaze?
Quite a few limestone chips here - still stratum 2?
no real soil change.

12 noon Under white patches in south-eastern corner; darker brown, loose soil, damp. Is left in place (stratum 4)
few pieces of pottery from stratum 3.

12:30 white streak ^{thin} over brown soil (stratum 4)
+ other white patches intermingled? Continue taking off surface layer with white patches, trying to keep to the start of the brown layer

[2] (2) - odd base found - 2nd such base found, has a "nipple" in the middle of it. Could be datable if it is unusual?

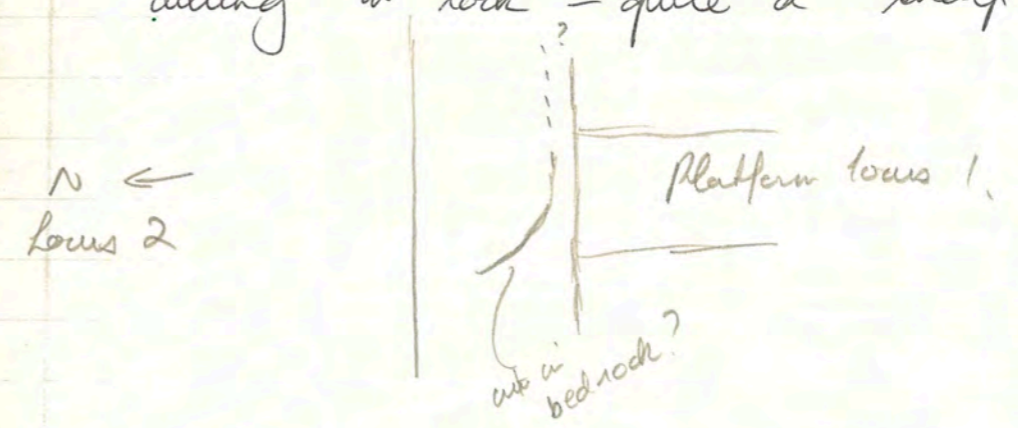
Tr 2 [1] (2) ✓
Tr 2 [2] (2) ✓
Tr 2 [3] (3) ✓

Jebel Kholid
North-west tower
Trench 2.

Weather - cloudless, sunny, cool wind.
Workers - Hassan Hassan, Bnanea.

6:30 am: Only two workers, so work continues in locus 2, clearing soil, stones (stratum 2) down to bedrock. Also larger stones here, appear to be broken pieces of worked blocks.

8:28: Possible foundation trench? appears to be deliberate cutting in rock - quite a sharp edge.




Some pieces of coarseware found.


4:30 am. Still clearing stratum 2 locus 2 to bedrock - more foundation trench appearing? little pottery at the moment. Work is slow.

Jebel Kholid

[Faint handwritten notes, possibly bleed-through from the reverse side of the page.]

PLATFORM = LOCUS ONE

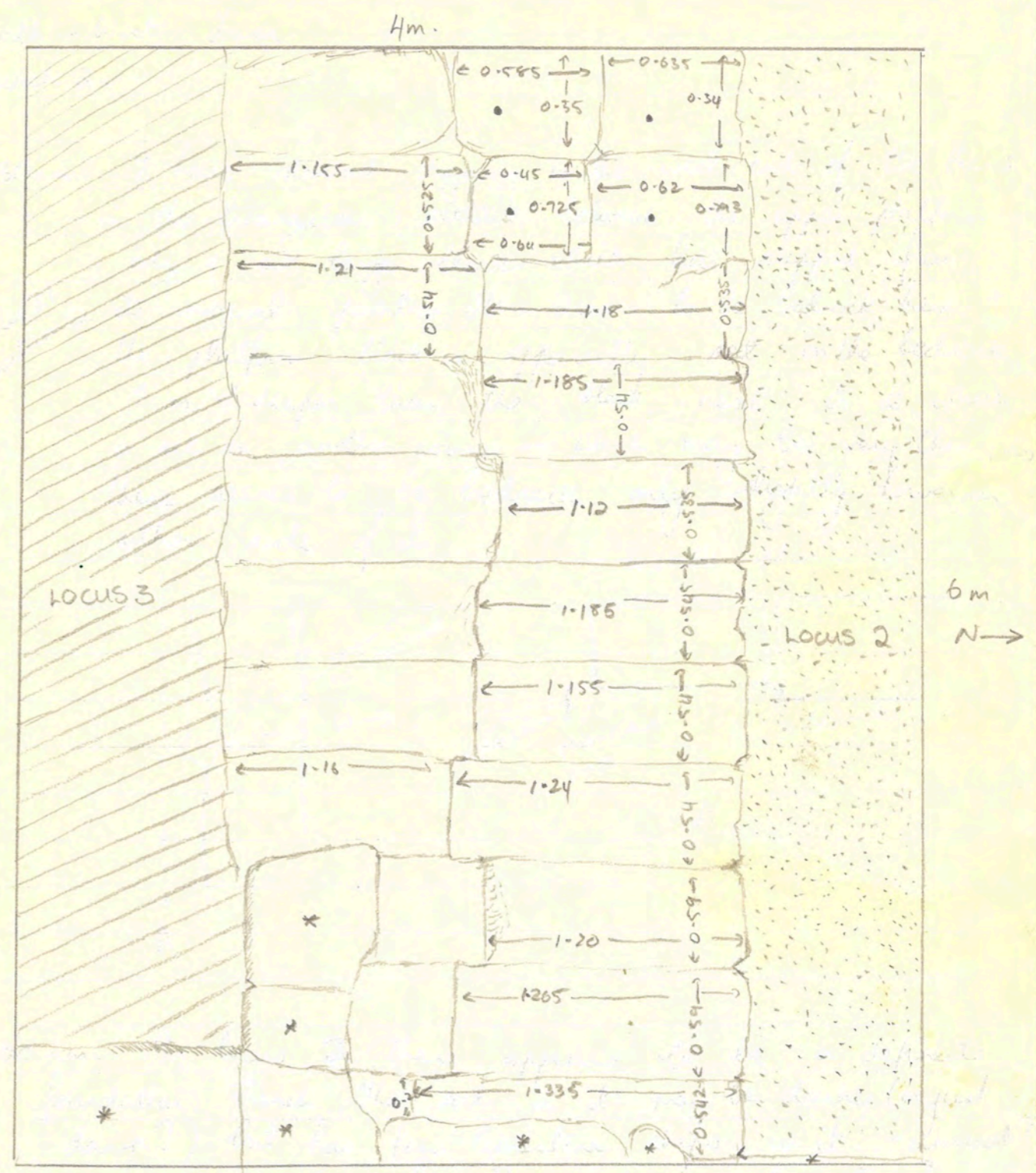
 = LOCUS THREE (WHITE PATCHES)

 = LOCUS TWO

* = MASONRY ONE COURSE HIGHER

• = MASONRY ONE COURSE LOWER

[Faint handwritten notes at the bottom of the left page.]



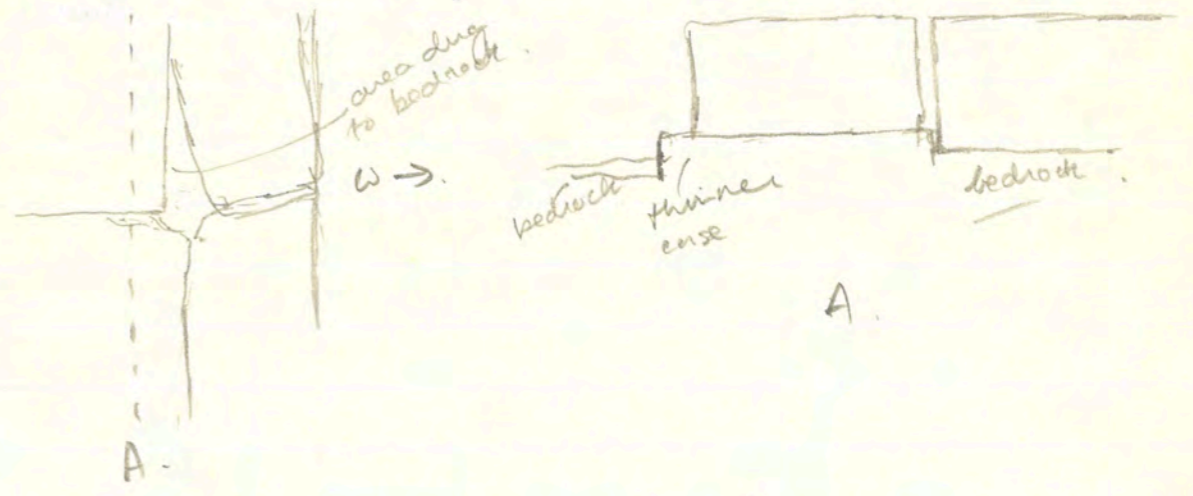
Jebel Khalid North West tower, Trench 2. *[Note: Part of structure 2 is removed]*

Jebel Khechid
North - West Tower
Trench 2



9:30 am I have started digging in the west end of the trench, in the triangular section between the upper platform edge & a large block which has slipped from its original position. There seems to be bedrock here & the platform block is apparently set on the bedrock, & is deeper than the block next to it, which is set on another course - which may be very thin, as there seems to be bedrock only slightly lower on either side of it?

locus 2
stratum 2



11:00 am. In locus 2 there appears to be a definite foundation trench. The soil in it may be drier (or just damp?) but has few limestone chips in it. - unusual? would expect chips of either bedrock or limestone? Foundation trench is left until rest of stratum 2 is removed

6 feet west end half block left

100587.

- Tr 2 [1] (2) - 2 coarseware fragments.
- Tr 2 [2] (2) - 19 ^{wall} ~~wall~~ fragments, coarseware. 1 orange-^{red} ~~pink~~ fabric, rest are buff.
- 1 outturned lip of small partially painted bowl.
- 1 small ~~neck~~ neck fragment, buff clay, with four close horizontal incisions.
- 1 small, simple bowl rim fragment, partially painted.
- 1 worn rim fragment, horizontal rim

100587.

Jebel Khaled
 North West Tower
 Trench 2

11:30am Still in locus 2, moving east along the north side, now just past the mid-point. Between stratum 2 & the bedrock here is a very thin line of darker, redder soil (cf Peter Lannon's trench just before bedrock)

12:30am Still clearing locus 2 stratum two to bedrock. Nearly at the large, worked block, which has slipped from its original position, in the north-east corner.

4. Only this large section of the wall remains white (stratum 1) against the dark brown background.

1:00pm. Approaching the bedrock, the wall is yellowish-brown, very dry, and appears to be made of brick.

Pottery: Tr 2 [2] (2) ✓
 Tr 2 [1] (2) ✓ (triangular section b/w lower platform at this layer of brown, slipped block at western end)
 layer of brown near the bedrock. At the moment, we are trying to take off only the top layer of white.

Jebel Khalid.
Northwest tower
Trench 2.

Weather: sunny, cool breeze
Workers: Hassan Hassan, Adjamuna, Branea, Sabah

7-30: (late start because sandcranes broke down)

: Lenteau digging stratum 2 to bedrock in locus 2
: Locus 3 - taking off white layer (stratum 3) - $\frac{1}{2}$ in corner of drafted blocks, is light chocolate brown soil near blocks (would expect limestone chips?). \uparrow stratum 4, is left at the moment.

Few pieces of coarseware found on the surface of stratum 4. Only thin layer stratum of white near blocks in corner. White (stratum 3) deeper further away from blocks?
- mixed in with same soil?

8:00am. Approaching large block near north-eastern corner. Trench here is ~~now~~ getting awkwardly deep. (digging from platform level to bedrock.)

Big block is marked, + fragments of it cleared away.

Stratigraphy Locus $\frac{2}{3}$ changing: seems to be a layer of brown under ~~the~~ ^{soil} whiter ~~than~~ (2 pieces of pottery found in this layer of brown) then more white, + intermittently, a layer of brown near the bedrock. At the moment, we are trying to take off only the top layer of white

Jebel Khalef
North West Tower
Trench 2

-getting cloudy.
8:50: paler layer thinning out, brown just under larger rock (locus 2) + more pottery found in brown ← still stratum 2? In brown with chips in it.

9:10 locus 3:



left in place at the moment.

Start digging west of drafted block in locus 3, leaving the section in the south eastern corner. Beneath a very thin white layer (stratum 3) is a layer similar to stratum 2; brownish soil, with limestone chips and powder mixed in. At the moment we are digging level with the platform, although the platform seems to end ~~at~~ at the beginning of locus 3. (Digging about 24 cm down.)

9:45 am: locus 2. Stripes? no longer evident, appears all stratum 2. At east end of locus 2 is a block, forming the stratum 5 - of similar nature to stratum 2 but a ^{lot} paler.

Jebel Khalid
North-west Tower.

Trench 2

wall of the trench. This appears to be the point at which the wall joins the tower; the block is in line with another one, outside the trench, which seems to be part of the wall.

Locus 3: Hassan Hassan claims to have hit "jebel" (bedrock) - not sure at this point if it in fact is bedrock - it seems too high up to be bedrock, especially as it is higher than the platform level. Still appears to be stratum 5 (~~stratum 5~~) here.

10:30 am. Halfway along locus 3, is a darker brown layer, \approx 21 cm down. This is left. Still some limestone amongst it, but not as much as stratum 5.

11:10 am. Locus 2: occasional sight of thin, richer brown layer at bottom, on bedrock, particularly on the trench-edge side.

11:15 am. Locus 2: striping again becomes distinct: paler layer, (like stratum 5) \approx 2 cm deep, then deeper, very pale layer (\approx thin, darker brown layer \approx 5 cm, then deeper, richer very pale layer \approx 20 cm deep. Also rich brown which seems to be associated with bedrock.

110587 TRENCH 2 [2] (2) : Seven small, ^{semi-} coarseware fragments
 " " [3] (5) : six coarseware body fragments
 : 1 fragment fine semi coarseware, stumpy
 red + black painted, 2 incised horizontal +
 parallel lines
 Tr 2 [3] (4) : 7 coarse ware fragments

Jebel Khalid
 North West Tower.
 Trench 2.

Locus 2 11:30am ; near bedrock, lots of loose chips - as if not
 crushed because haven't been walked on much. Still
 "stumpy".

Locus 3 : Soil colour still varying, even at same level - darker
 brown areas appearing in amongst paler. Pale seem often
 quite thin - soil interspersed with limestone, signs of
 intermittent working?
 Also odd patch of more concentrated limestone, as
 noticed in south-east corner.

11:50. Locus 2; still striped stratigraphy. Lots of limestone
 chips, particularly in thick middle pale layer - no longer
 simply stratum 2.

(Should "stratum 5" in locus 3 = these white/brown layers,
 all intermingled?)

12:30 pm. Still stumpy + lots of limestone chips in locus 2.

1:30am
 Pottery = Tr 2 [3] (5) ✓ Tr 2 [2] (2) ✓, Tr 2 [3] (4) ✓

Jebel Khalid
North West Tower
Trench 2.

Weather: clear, sunny.

Workers: Adjanuna, Bnanea, Hassan Hassan, Sabah.

6:45 am: Photos locus 2, looking east at stratigraphy (thin layer white, slightly thicker of brown, thick layer white, often thin layer of richer brown near bedrock).
Roll 5, frames 35 & 36.

Continue digging locus 2, moving towards east side.
Continue digging locus 3, taking off layer approximately level with platform.

7:10: Locus ²/₃: division of "stripes" into strata

Thin pale layer - stratum 3

Thicker brown layer - stratum 4

Very thick white limestone powder/chips layer - stratum 5

Rich brown layer, thin, near bedrock - stratum 6

7:20 - Locus 2: close to east end - some fragmented blocks which have fallen.

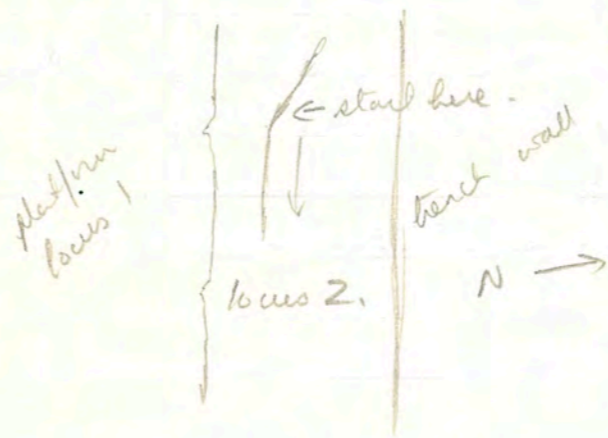
8:30 am. Have dug to the wall at east end locus 2 - it needs cleaning, but at this point the wall does not appear

12087
 North West Tower
 Trench 2
 to be bonded to the wall.
 Now start clearing main foundation trench (ie where it is most obvious - not sure yet if there is a proper foundation trench in west end of locus 2, near lower platform) at point where the rock is cut in a curved fashion into the trench:
 Platform locus 1
 locus 2
 Trench wall
 N →

Jebel Khalid.
 North West Tower.
 Trench 2.

to be bonded to the wall.

Now start clearing main foundation trench (ie where it is most obvious - not sure yet if there is a proper foundation trench in west end of locus 2, near lower platform) at point where the rock is cut in a curved fashion into the trench:



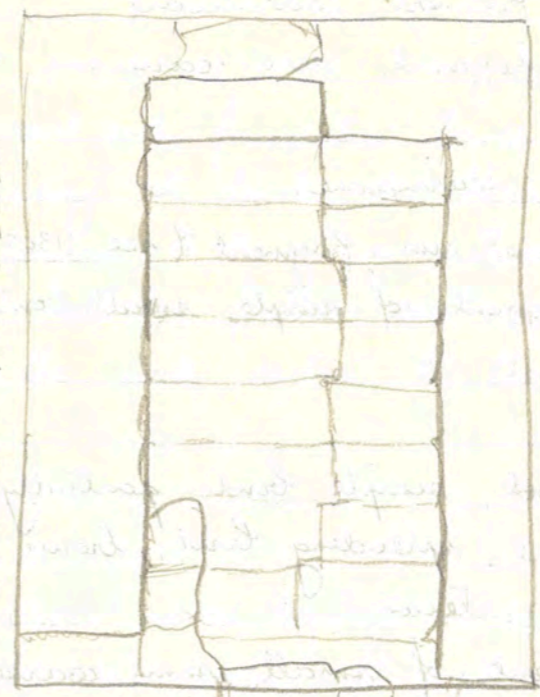
Foundation trench = stratum 7

soil fairly dark - not as much limestone as might expect in a foundation trench? little limestone powder. ~~There are~~ though are quite a few limestone chips - implies its not trodden on, which would be logical in a foundation trench.

11-30

locus 2. Clearing for photographs

Jebel Khalid
North West Tower
Trench 2



- 10-20 : new in drafted block corner (south east corner) of locus 3. Darker brown area noticed near blocks (stratum 4) continues down at least to the level of the platform.
- 10-30 : Dark rich brown soil associated with bedrock found in foundation trench = stratum #8.
- 11-30 : Fine coarseware pottery turning up in stratum 4 locus 3 (dark brown soil near drafted blocks)
: locus 2: cleaning for photographs

120587.

- Tr 2 [2] (5) - one ^{worn} wall fragment, coarseware
 - one rim fragment, semi-coarseware bowl } discarded accidentally

- Tr 2 [3] (5) - 12 fragments coarseware
 - 1 coarseware rim fragment (see 130587, Tr [2] [3] (6))
 - 1 rim fragment, of simple, small bowl, partially painted.

- Tr 2 [3] (4) - rim fragment, simple bowl, partially painted ware
 - rim fragment, spreading bowl, brown fabric, dull red paint interior
 - rim fragment of small semi-coarse bowl, slight notch below rim exterior.
 - small lot coarseware fragments.

120587.

Jebel Khalid,
North West Tower.
Trench 2.

Focus 2: At east end, foundation trench appears to go under, a little way at least, the blocks of the wall, which are not bonded to the tower. This implies that the platform, which extends further east outside the trench, was built before the wall section to the north of it.

Object 87-030 - small figurine in 4 pieces? Appears to be bearded man with pointed cap?
= 87.030

Pottery: Tr 2 [3] (5) ✓, Tr 2 [3] (4) ✓, Tr 2 [2] (5) ✓

Jebel Khalid
North West Tower
Trench 2.

Weather - sunny.
Workers - Hassan Hassan, Sabah, Bonanea, Ajamina.

6:30am: continue cleaning ^{locus} ~~locus~~ 2 for photographs.
" " 3, stratum 5.

Two pieces of ~~coarseware~~ coarseware coming from [3] (5).
8:25 - Still cleaning bedrock [2]. Bedrock has rather strange, sharp channels in it. They look cut, in that the edges are so sharp, but are not regular & are probably natural.

Locus 3. 9:40am: Strata becoming very clear on ^{south} sides of trench.
Below (5) is a dark brown strip, which at the moment appears to be of approximately the same thickness (= stratum 6).
Below this is another pale layer, i.e. mainly limestone powder/chips. Is probably as concentrated as anything we've come across yet.

Early this morning a large rim fragment of a black painted coarseware vessel was found in stratum (5) locus [3]. Later, in (6) more fragments were found, (3 more), and all four fit together (in separate bag ~~inside bag~~ Tr [3](5)/(6).

metals

Jebel Khalid
North - West Tower
Trench 2.

10:40 Photos locus 2.

Roll 6 frames 17-24.

n° 17 - Whole of locus 2, looking east.

n° 18 - eastern half locus 2.

n° 19 - western half locus 2.

n° 20 → 23 - locus 2, side of "platform", + foundation trench,
looking south, moving east → west.

n° 24 - Whole of locus 2, looking west.

Locus 2 now finished.

→ Branea + Ajamua start helping Hassan Hassan + Sabah
on locus 3, starting at the western end.

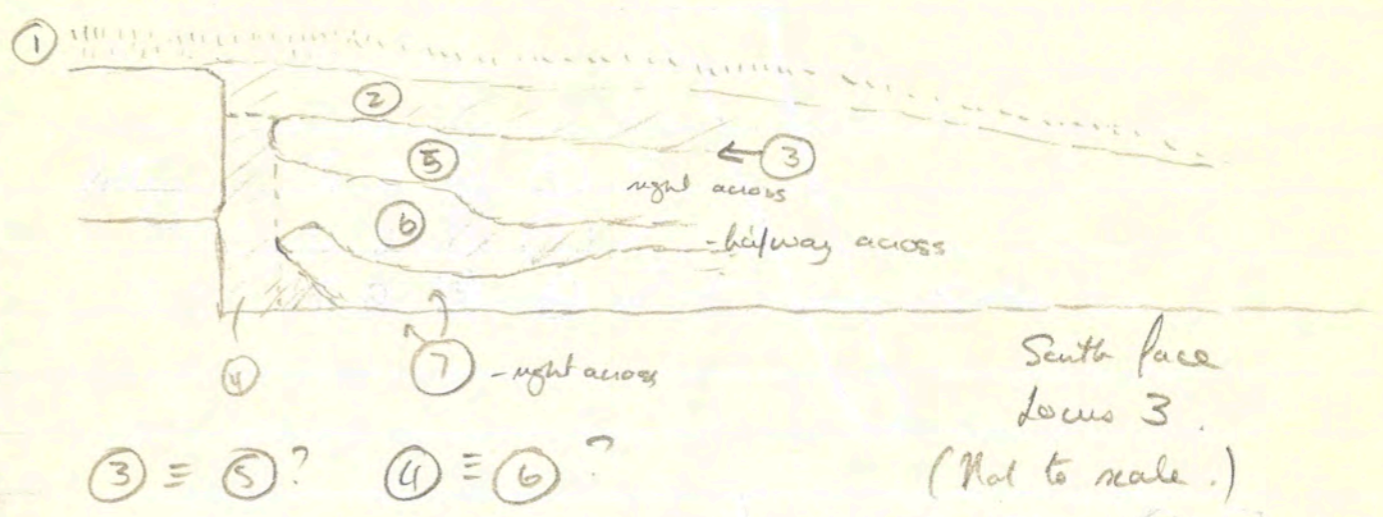
11:05 am. Locus 3, south side, eastern half: brown layer (stratum
6) becoming thinner

NB Stratum 6 does not extend more than halfway way
across locus 3 (across = north → south → north, along -
east - west)

6 is only along the southern not northern side.

P70 diagram.

Jebel Khalid
North-West Tower
Trench 2

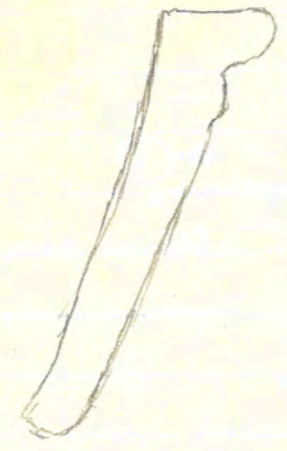


11-50 am. West end locus 3. Middle Brown layer directly below
 level, with some limestone chips in it. Is it going to
 join up with 6? Or is it similar to 2, as in
 [2]? No pottery here so far.
 Also very little pottery eastern half [3].

Locus 3. on north side of trench, part drafted blocks,
 getting brown soil. & some chips, along the sides of the
 "platform"; between 5 + 7, if 6 does not extend
 right across [3], which at the moment it does not
 appear to do. Or is it in fact connected with 6?

130587.

Tr 2 [3] (6) - 2 worn coarseware fragments.
- 4 joining fragments, coarseware bowl, buff fabric



Tr 2 [3] (7) - 87 coarseware fragments.

Tr 2 [3] (5) - 14 tiny fragments, coarseware
1 base fragment, coarseware, small bowl (?)

Jebel Khalid
North-West Tower.
Trench 2.

Pottery : Tr 2 [3] (5) ✓
Tr 2 [3] (7) ✓
Tr 2 [3] (6) ✓ + cover 5-6

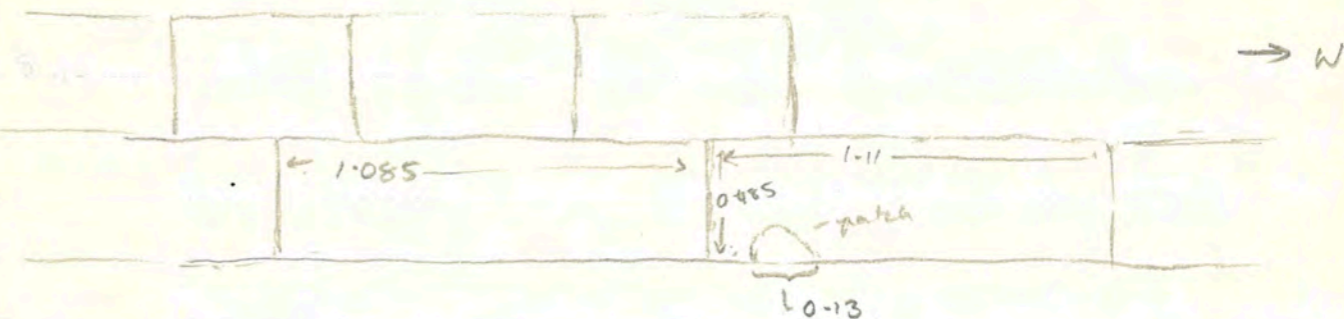
Jebel Khalid
North - West Tower
Trench 2.

Weather - a little hazy, but sunny.

Workers - Ajamuna, Bnanea, Hassan Hassan, Salah.

6:45. Photographs locus 2.

NB Plaster "bandaid" noticed on foundation block in locus 2.



Continue clearing locus 3 to stratum 7. At the moment, stratum 6 does not appear to exist in the western end of locus 3, but stratigraphy moves directly from ② ① to either ⑤ or ⑦?

7:45 am. No pottery so far.

8:15 am. At west end ^{yes} locus 3, hit bedrock, still in stratum ⑤ or ⑦. 9th it ①? Stratum ⑥ now seems to be appearing on south side of western end locus 3 (digging west → east).
Now start digging at a deeper level in east end locus 3. Still in stratum ①; but occasional evidence of darker soil around blocks northern side.

Jebel Khalid
North West Tower.
Trench 2.

Stratum 7 locus 3; initially unadulterated limestone - a few chips but mainly powder. Was it pulverised & put there deliberately? Can stratum 6 be soil blown in, or tracked in, & maybe later covered by another layer of limestone = stratum 5 (which has signs of soil in it)?

8:40am. Not evident at this point whether or not there is a foundation trench cut into the bedrock along north side of locus 3. Would expect one, as ground rises slightly here in comparison to locus 2?

More brown soil noticed near blocks on north side eastern half of locus 3 - left at this stage, but white layer (stratum 7) removed.

9:35 Bedrock in south-east corner of locus 3. Also seems to be a thin layer of brown soil, with some chips in it, on bedrock in corner around blocks. Not as dark and rich looking as the soil associated with bedrock in locus 2.

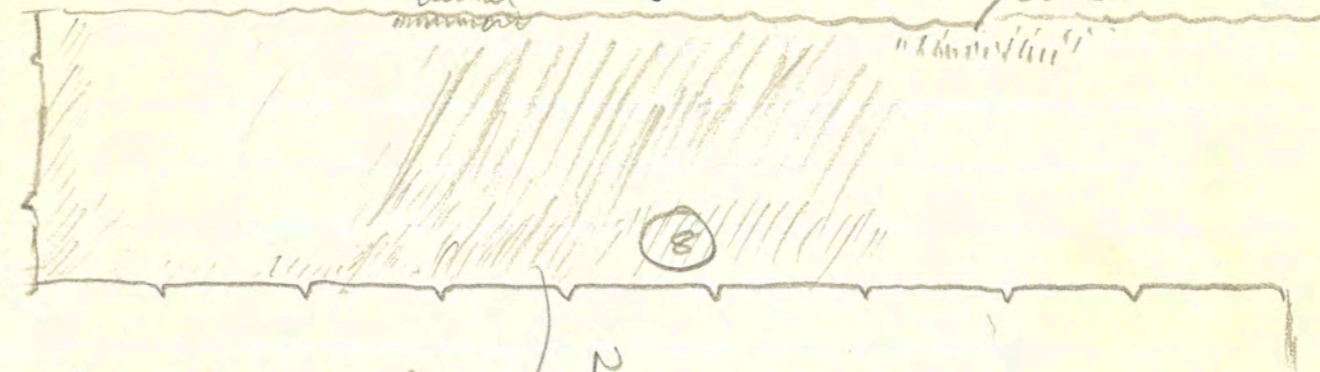
9:45. Above also in western end locus 3, starting around the second block from the western end. Especially close to the blocks.

Jebel Khalid
North West Tower
Trench 2.

10-25. No pottery yet found. Digging mainly stratum 7 - if (7) was deliberately laid, there probably would not be any pottery in it?

10-40am. Traces of thin layer dark soil on bedrock, in middle of western half locus 3.
+ also layer light brown soil with a few chips on it + a few larger stones around mid-pt locus 3. Appears to be on bedrock.

11-05 Remove darker soil along middle section north side of locus 3



soil a bedrock locus 3 (bird's eye view) removed.

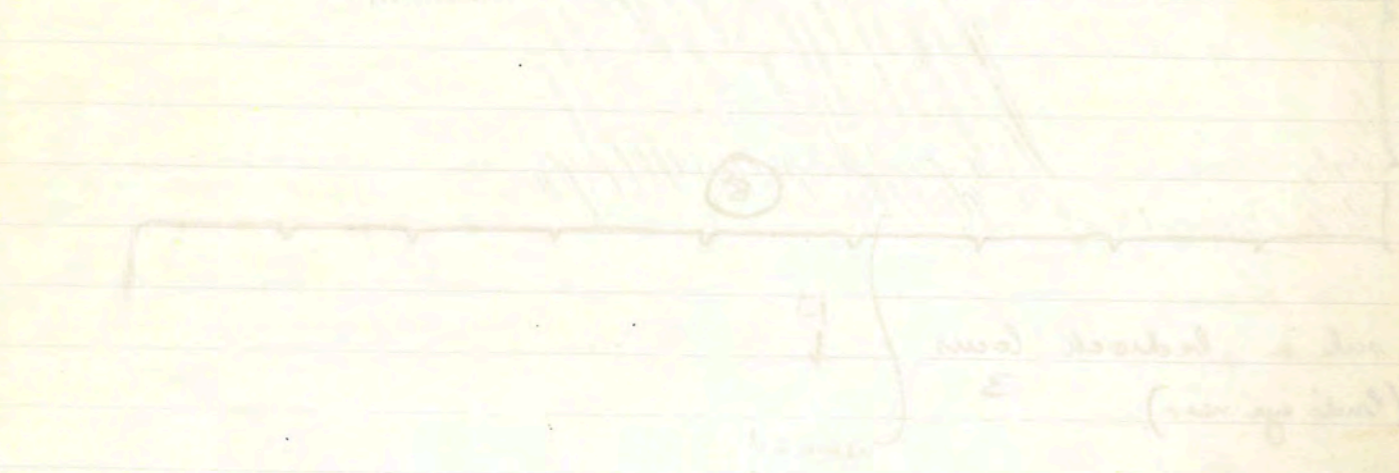
11-20 few pieces coarseware found in brown soil - chips near bedrock = stratum 8 - + lighter soil but more chips on either side Intermittent fine traces of red dark soil on bedrock = stratum 8/10

Tr 2 [3] (8) - one semi-coarseware body fragment, reddish brown fabric

① - 7 meters high... to find the first... was probably... pottery is...
② - 1 meter high... pottery is...

10:00m... in middle of trench... some half...
+ 3' no sign of a few chips... some half...
all of middle... some half...
bedrock is

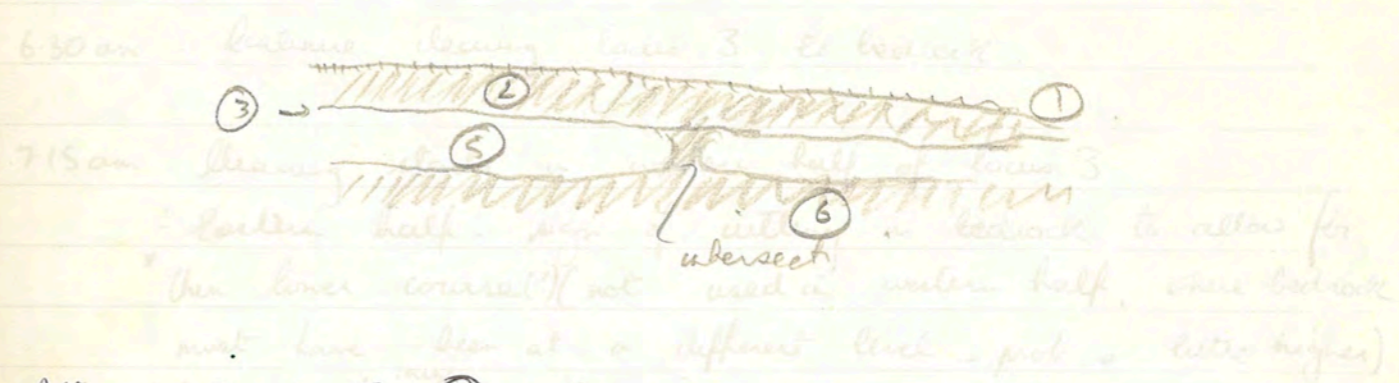
1:00pm... middle section...
"middle section"



11:20 for... semi-coarseware...
+ 3' no sign of a few chips...
① - 7 meters high...
② - 1 meter high...
③ - 1 meter high...
stratum 10

Jebel Khalid.
North West Tower.
Trench 2.

Just west of mid-point of locus 3, stratum 2 appears to intersect with stratum (6) :



Pottery: Tr 2 [3] (8) ✓ in blocks

Stratigraphy locus 3 - Stratum 8 (dark soil, with chips)...
...the middle section of locus 3... reappears...
...half of trench?...
...half of trench... Bedrock is

*not sure at this junction if... coarse than blocks...
cutting away of the bedrock... the floor of locus 3...
...not seem as high as...
...small last

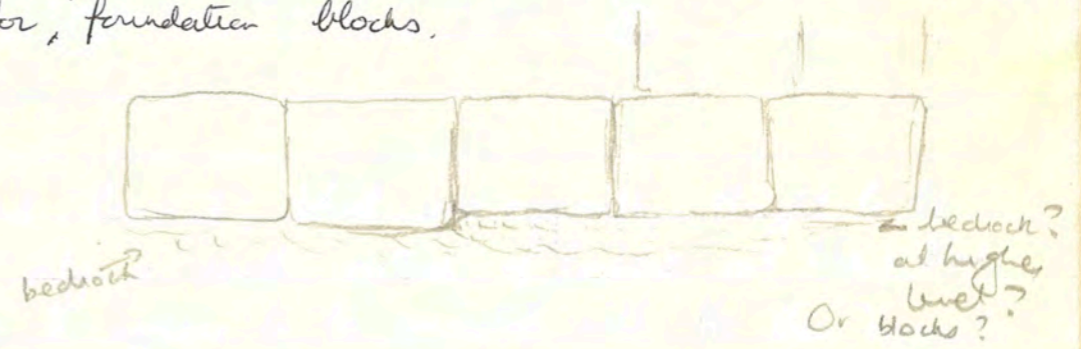
Jebel Khald
North West Tower
Trench 2.

Weather : clear, sunny.
Workers : Hassan Hassan, Adjamuna, Braneer, Hadlie.

6:30 am : Continue clearing locus 3. to bedrock.

7:15 am : Clearing starts in western half of locus 3.
- Eastern half: sign of cutting in bedrock to allow for
* thin lower course? (not used in western half, where bedrock
must have been at a different level - prob a little higher)
to level for ^{large} foundation blocks.

locus 3
north side
Eastern half



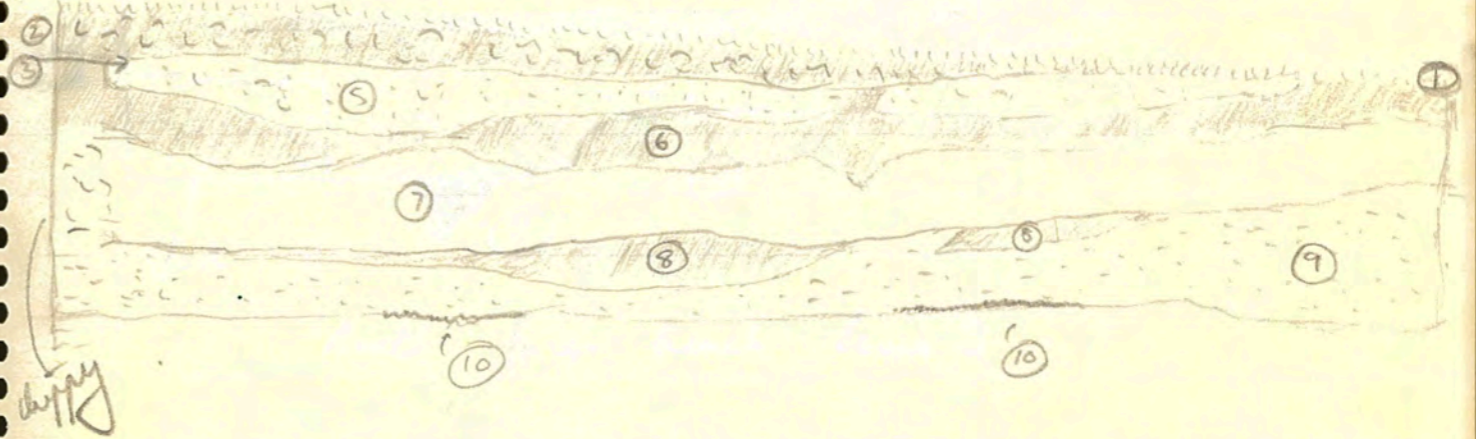
Stratigraphy locus 3; Stratum 8 (darker soil, with chips) predom-
inately in the middle section of locus 3. Reappears
briefly in western half of trench? Continues in a
thin line into eastern half of trench. Below it is

3. Block
* not sure at this juncture if = course thin blocks a simply a
cutting away of the bedrock on the floor of locus 3 - is it the latter? to
level? Have to measure blocks here, but don't seem as high as in
western half

Jebel Khalid
North West Tower

Trench 2. = stratum 9.

a lighter ~~sovere~~ layer - is it as pale as ⑦? Certainly it has more chips in it than ⑦. Also, right at the eastern end, is more of the fairly dark soil associated previously with the block faces (cf. stratum 4)



8:45 am. east end locus 3: what was originally thought to be bedrock is only a small section of bedrock cut like a block, or a block. It appears to be connected with the thin "course" noticed before. The "block" has a triangular shaped cutting in it - I am not sure at the moment whether this was deliberately made or not. The actual bedrock has not yet been reached in the east

11:00 am. Bedrock reached; at a lower level in east end locus 3. Block appears to have been put in at the corner for strength? If limestone layer (stratum 7) = floor, it is below floor level. Bedrock has a channel

160587
 Jebel Khalid
 North West Tower
 Trench 2
 in it, (natural?) filled with the dark, rich brown soil associated with bedrock elsewhere (= stratum eleven, ≡ stratum 10.)

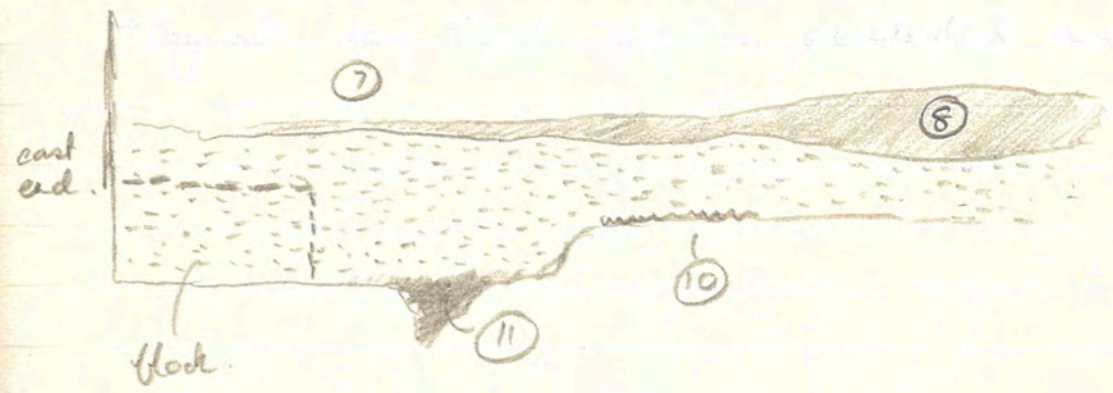


The soil was very rich, though to be
 noticed before the black soil was
 reached. It appeared to be associated with the
 "black" soil. The soil was very rich, though to be
 noticed before the black soil was reached. It appeared to be associated with the
 "black" soil. The soil was very rich, though to be noticed before the black soil was reached.

The soil was very rich, though to be noticed before the black soil was reached. It appeared to be associated with the "black" soil. The soil was very rich, though to be noticed before the black soil was reached.

Jebel Khalid
 North West Tower
 Trench 2

in it, (natural?) filled with the dark, rich brown soil associated with bedrock elsewhere (= stratum eleven, ≡ stratum 10.)



South face trench Locus 3

No pottery.

Jebel Khalid
North West Yemen
Trench 2

is a (natural?) filled with the dark, rich brown soil
with black clumps (= stratum) (10 meters)



North West Yemen

No. 170587

Jebel Khalid
North West Yemen
Trench 2.

Weather : very hot
Workers :

6:45 am. final cleaning of trench for photographs.

→ Lay out new trench 6m x 5m, accidental area.

Objects.

87-011

unstratified

87-030

Tr 2 [3] O

figure in 4 pieces? Beaded
man with pointed cap? 120587.

Locus 2: "stripes":

stratum ~~six~~³ - thin pale layer.

stratum ~~seven~~⁴ - thicker, brown layer.

stratum ~~eight~~⁵ - thick white (powder, chips of limestone) layer.

stratum ~~nine~~⁶ - thin, richer brown layer on bedrock.

Locus 2: Foundation trench - stratum ~~ten~~⁷ light brown soil, not as much limestone powder as might be expected. There are some chips, which imply not walked on (which would be logical).

: Bottom of Foundation trench - stratum ~~eleven~~⁸.
Rich, ^{dark} brown soil, which has elsewhere been associated with the bedrock.

Locus 3: stratum ~~12~~⁶ - below (5), dark brown.
stratum ~~13~~⁷ - palish, ^{rich} - to (5)? mainly limestone chips/powder
more concentrated than (5).

stratum 8 - light brown soil & some limestone chips found mainly near bedrock in middle sectⁿ locus 3.

stratum 10⁹ - rich dark soil; few, intermittent traces of a thin line of it on bedrock, ~~at~~ locus 3.

stratum 9: Pale, with a lot of limestone in it, but not as much as 7. Also a great deal of sharp limestone chips (whereas (7) was mainly powder).

stratum 11¹⁰: rich, dark brown soil of stratum 10. There is in channel in bedrock, at deeper level than (10)

Locus one : stratum one (topsoil)
: stratum two (brown soil with limestone chips,
powder + tumble in eastern
section)

Locus two : stratum one (topsoil)
: stratum two (brown soil with limestone chips
& powder + slight variations in
places)

Locus three : stratum one (topsoil)
: stratum two (in south eastern corner,
with some tumble)
: stratum three (thin white patches)
: stratum four (brown soil in south eastern
corner near blocks)
: stratum five (similar to stratum two below
white patches - but a bit lighter?
+ includes patches white/brown?
→ mottled.

(10)

①

Jebel Khalid
North-West Tower Trench Two.

Trench two, measuring 6m x 4m was laid on the north side of the entrance to the tower, running east to west. Parts of a stone structure were already visible above the topsoil, at varying levels. The position of the trench was chosen in order to see what the relationship of these levels was to each other and also whether or not the structure corresponded to that already uncovered in trench one.

The topsoil along the eastern bank of the trench was removed, and it was evident that the stone "platform" ran down the middle section of the trench only. The trench was then divided into three loci, and these were excavated separately.

Locus one was the stone structure itself; removal of topsoil, and, in the eastern half, some tumble, revealed two rows of stone blocks laid side by side. The blocks along the south side were drafted along the top, implying that this was the exposed face of the inner side of the tower wall. There was no such drafting on the north side of the wall. The varying levels of the structure were evidently due to the removal of one or two blocks of the main course, and all but one of the blocks of the course about this one.

Locus two was the section between the wall and the northern bank. It was excavated down to the level of the bedrock, and showed that the wall was composed of two courses of blocks, with the vertical edges drafted, set in a shallow foundation trench. One block in the lower course had a small plaster patch on it, as if it had been repaired at some stage. Along the eastern bank of locus two the wall connected with the city wall; however, they did not appear to be actually bonded. The soil removed from locus two was mainly a

P.T.O.

②

Jebel Khalid
North-West Tower Trench Two cont'd.

light, reddish brown type, and was fairly loose. Occasionally the stratigraphy varied and in places the soil contained more limestone powder or chips, but there was no consistent pattern. In the eastern end, some fairly large stones (tumble) were removed including one worked block and fragments of others. Rich, dark brown soil was often associated with the bedrock, which had some quite deep channels in it. However, these appeared natural rather than deliberate. No pottery or objects were found in the foundation trench.

In locus three, the section between the wall and the southern bank, there were drafted stone blocks along the eastern bank, at right angles to the wall, evidently part of the inner wall of the tower. Locus three was excavated down to the bedrock. In the eastern section there were two courses, with a couple of blocks from a third at the connection point of the walls. In the western section of locus three, however, the wall was only one course high because of the rising bedrock. The vertical edges of the blocks were drafted, but only the second and third courses were drafted along the horizontal edge, implying that the lowest course was always below the floor level. There was no true foundation trench except for a short, shallow cutting along the south side of the wall in the eastern half of locus three. In fact, in the western half of the locus the blocks were of slightly varying heights in order to maintain a level coursing on uneven bedrock. In the north-east corner of locus three, where the walls connected, was a block set in the bedrock and protruding, apparently so placed for reinforcement of the corner. The stratigraphy along the southern bank was very clear, and included two layers of very pure limestone powder, possibly

P.T.O.

Jebel Khalid

North-West Tower Trench Two cont'd.

floor. The lower of these two layers would have been above the lowest course of masonry.

The pottery found in trench two was mainly coarseware, with some semi-coarse ware, sometimes with weak glaze.

One piece of metal (bronze?) was found in locus three, but it was so badly corroded that it was impossible to tell the function of it.